

Data Path : Z:\svoasrv\HPCHEM1\BNA_M\Data\BM042123\
 Data File : BM039568.D
 Acq On : 22 Apr 2023 01:18
 Operator : CG/JU
 Sample : 02386-15
 Misc :
 ALS Vial : 16 Sample Multiplier: 1

Instrument :
 BNA_M
 ClientSampleId :
 SPA-4WC-23-04

Integration Parameters: rteint.p
 Integrator: RTE
 Smoothing : ON
 Sampling : 1
 Start Thrs : 0.2
 Stop Thrs : 0
 Filtering: 5
 Min Area: 3 % of largest Peak
 Max Peaks: 100
 Peak Location: TOP

If leading or trailing edge < 100 prefer < Baseline drop else tangent >
 Peak separation: 5

Method : Z:\svoasrv\HPCHEM1\BNA_M\Methods\8270-BM041723.M
 Title : ASP BNA STANDARDS FOR 5 POINT CALIBRATION

Signal : TIC: BM039568.D\data.ms

peak #	R.T. min	first scan	max scan	last scan	PK TY	peak height	corr. area	corr. % max.	% of total
1	3.966	150	158	172	rBV	2693182	4338624	10.46%	0.393%
2	5.119	347	354	363	rBV2	3014776	5590541	13.47%	0.507%
3	5.313	382	387	394	rVB	10865080	16383312	39.49%	1.486%
4	5.455	405	411	427	rVB	17072485	36401292	87.73%	3.301%
5	5.819	466	473	481	rVB	10886677	17054257	41.10%	1.547%
6	6.078	508	517	524	rBV4	2102867	5017896	12.09%	0.455%
7	6.296	547	554	561	rBV5	2824728	6033397	14.54%	0.547%
8	6.366	561	566	570	rBV	3272652	4797344	11.56%	0.435%
9	6.443	575	579	583	rBV2	2311957	3818303	9.20%	0.346%
10	6.707	616	624	629	rBV3	1962893	4834887	11.65%	0.438%
11	6.801	629	640	646	rBV3	8467856	17450130	42.06%	1.583%
12	6.866	646	651	654	rVV	4216280	6077641	14.65%	0.551%
13	6.913	654	659	663	rVV	8562496	13704956	33.03%	1.243%
14	6.972	663	669	674	rVV3	8502164	15731347	37.92%	1.427%
15	7.049	674	682	687	rVB3	6215700	11757157	28.34%	1.066%
16	7.207	703	709	716	rBV3	3768436	8388548	20.22%	0.761%
17	7.301	721	725	729	rVV	2658726	4145127	9.99%	0.376%
18	7.448	743	750	753	rBV	13804703	24831606	59.85%	2.252%
19	7.478	753	755	762	rVB	14220830	18536902	44.68%	1.681%
20	7.725	788	797	804	rBV6	3489543	10265478	24.74%	0.931%
21	7.801	804	810	816	rVB	9696763	15288674	36.85%	1.387%
22	7.872	816	822	830	rVB2	7777411	14996320	36.14%	1.360%
23	7.948	830	835	842	rBV3	6365451	13802707	33.27%	1.252%
24	8.013	842	846	848	rBV2	2749889	3390394	8.17%	0.307%
25	8.048	848	852	859	rVV	7473454	11939058	28.78%	1.083%
26	8.113	859	863	870	rVB	4277598	7124872	17.17%	0.646%
27	8.190	870	876	883	rVB2	7953548	14659246	35.33%	1.329%
28	8.319	892	898	900	rBV3	2202540	3704278	8.93%	0.336%
29	8.360	900	905	911	rVV2	5919841	13054653	31.46%	1.184%
30	8.413	911	914	919	rVB	4081696	5873396	14.16%	0.533%
31	8.478	919	925	937	rBV4	10133217	24680865	59.49%	2.238%
32	8.590	937	944	948	rBV	4726885	7692942	18.54%	0.698%
33	8.784	972	977	982	rBV	2878870	4681625	11.28%	0.425%
34	8.837	982	986	992	rVB	3467825	5415596	13.05%	0.491%
35	8.943	998	1004	1010	rVB	7675131	13112532	31.60%	1.189%
36	9.025	1011	1018	1019	rBV4	2742748	4600923	11.09%	0.417%

Data Path : Z:\svoasrv\HPCHEM1\BNA_M\Data\BM042123\
 Data File : BM039568.D
 Acq On : 22 Apr 2023 01:18
 Operator : CG/JU
 Sample : 02386-15
 Misc :
 ALS Vial : 16 Sample Multiplier: 1

Instrument :
 BNA_M
 ClientSampleId :
 SPA-4WC-23-04

Integration Parameters: rteint.p
 Integrator: RTE
 Smoothing : ON
 Sampling : 1
 Start Thrs: 0.2
 Stop Thrs : 0
 Filtering: 5
 Min Area: 3 % of largest Peak
 Max Peaks: 100
 Peak Location: TOP

If leading or trailing edge < 100 prefer < Baseline drop else tangent >
 Peak separation: 5

Method : Z:\svoasrv\HPCHEM1\BNA_M\Methods\8270-BM041723.M
 Title : ASP BNA STANDARDS FOR 5 POINT CALIBRATION

37	9.066	1019	1025	1034	rVB2	15499069	32423065	78.15%	2.940%
38	9.184	1040	1045	1052	rVB4	3294569	7164934	17.27%	0.650%
39	9.278	1054	1061	1065	rBV3	2387630	5707070	13.76%	0.518%
40	9.401	1076	1082	1088	rBV5	1505009	3552971	8.56%	0.322%
41	9.466	1088	1093	1098	rBV2	5327533	8677439	20.91%	0.787%
42	9.525	1098	1103	1111	rVB	5945566	10670975	25.72%	0.968%
43	9.984	1175	1181	1185	rBV2	2197011	4890580	11.79%	0.444%
44	10.042	1185	1191	1197	rVV3	5920384	14640814	35.29%	1.328%
45	10.101	1197	1201	1206	rVV2	2732949	4577893	11.03%	0.415%
46	10.219	1214	1221	1225	rVV4	1557187	3835601	9.24%	0.348%
47	10.272	1225	1230	1236	rVB	3500377	5326960	12.84%	0.483%
48	10.337	1236	1241	1248	rVB	1925187	3605615	8.69%	0.327%
49	10.507	1261	1270	1280	rBV2	6053162	12658729	30.51%	1.148%
50	10.607	1280	1287	1295	rVV	8593928	15261846	36.78%	1.384%
51	10.695	1296	1302	1308	rVB2	7551999	14215071	34.26%	1.289%
52	10.789	1314	1318	1324	rVB	2682697	4001381	9.64%	0.363%
53	11.066	1360	1365	1370	rVB2	2756484	4908430	11.83%	0.445%
54	11.554	1442	1448	1454	rVB3	2347781	4630656	11.16%	0.420%
55	11.660	1461	1466	1470	rBV	3395649	5689367	13.71%	0.516%
56	12.060	1529	1534	1540	rVB	7073373	10316682	24.87%	0.936%
57	12.313	1566	1577	1583	rVB	8680429	17159084	41.36%	1.556%
58	12.531	1609	1614	1622	rVB	5341173	9047067	21.81%	0.820%
59	12.695	1637	1642	1646	rBV2	2414392	4033776	9.72%	0.366%
60	12.754	1646	1652	1657	rVB4	1810413	4201146	10.13%	0.381%
61	12.966	1684	1688	1692	rBV	2329357	3549620	8.56%	0.322%
62	13.019	1692	1697	1703	rVB	7961569	11791459	28.42%	1.069%
63	13.319	1740	1748	1759	rBV3	12903594	28825693	69.48%	2.614%
64	13.401	1759	1762	1772	rVB5	1901346	4574380	11.03%	0.415%
65	13.554	1779	1788	1793	rBV	13862773	25018570	60.30%	2.269%
66	13.613	1794	1798	1802	rBV2	2127286	3788704	9.13%	0.344%
67	13.660	1802	1806	1808	rBV2	3638658	5520565	13.31%	0.501%
68	13.819	1827	1833	1840	rBV5	8519060	24561311	59.20%	2.227%
69	13.877	1840	1843	1851	rVV4	6831715	14045504	33.85%	1.274%
70	13.972	1851	1859	1863	rVV2	12531197	22467839	54.15%	2.038%
71	14.013	1863	1866	1870	rVV2	4661935	6057742	14.60%	0.549%
72	14.089	1876	1879	1883	rVB	3852494	4802347	11.57%	0.436%
73	14.330	1915	1920	1924	rVB3	5331404	9544129	23.00%	0.866%
74	14.389	1925	1930	1934	rBV	11752205	18811292	45.34%	1.706%
75	14.460	1939	1942	1946	rVV4	3683886	6565646	15.82%	0.595%
76	14.501	1946	1949	1955	rVB2	4827173	7110858	17.14%	0.645%

Data Path : Z:\svoasrv\HPCHEM1\BNA_M\Data\BM042123\
 Data File : BM039568.D
 Acq On : 22 Apr 2023 01:18
 Operator : CG/JU
 Sample : 02386-15
 Misc :
 ALS Vial : 16 Sample Multiplier: 1

Instrument :
 BNA_M
 ClientSampleId :
 SPA-4WC-23-04

Integration Parameters: rteint.p
 Integrator: RTE
 Smoothing : ON Filtering: 5
 Sampling : 1 Min Area: 3 % of largest Peak
 Start Thrs: 0.2 Max Peaks: 100
 Stop Thrs : 0 Peak Location: TOP

If leading or trailing edge < 100 prefer < Baseline drop else tangent >
 Peak separation: 5

Method : Z:\svoasrv\HPCHEM1\BNA_M\Methods\8270-BM041723.M
 Title : ASP BNA STANDARDS FOR 5 POINT CALIBRATION

77	14.560	1955	1959	1961	rBV2	2676539	3819224	9.21%	0.346%
78	14.719	1980	1986	1994	rVB5	2386628	6689482	16.12%	0.607%
79	14.895	2011	2016	2021	rBV3	4752648	8253820	19.89%	0.749%
80	15.007	2032	2035	2043	rVB4	3864615	7455464	17.97%	0.676%
81	15.119	2050	2054	2059	rBV	2305416	3665633	8.83%	0.332%
82	15.283	2077	2082	2086	rBV5	2577349	6001945	14.47%	0.544%
83	15.342	2088	2092	2096	rVB	8481385	11559137	27.86%	1.048%
84	15.507	2116	2120	2125	rBV	6339477	10388527	25.04%	0.942%
85	15.754	2156	2162	2166	rBV2	6490855	11719133	28.25%	1.063%
86	15.960	2193	2197	2200	rBV3	2947959	5095437	12.28%	0.462%
87	16.013	2200	2206	2214	rVB	15792968	28658810	69.07%	2.599%
88	16.119	2220	2224	2230	rBV	6775784	9454908	22.79%	0.857%
89	16.236	2236	2244	2256	rVB3	12626195	41490667	100.00%	3.763%
90	16.348	2258	2263	2268	rBV	9542407	18194091	43.85%	1.650%
91	16.413	2268	2274	2279	rVB2	9661828	19637248	47.33%	1.781%
92	16.466	2279	2283	2288	rBV2	9760278	16029301	38.63%	1.454%
93	16.513	2288	2291	2293	rBV	3905330	4110421	9.91%	0.373%
94	16.554	2293	2298	2300	rBV3	12188262	21702110	52.31%	1.968%
95	16.666	2312	2317	2323	rVB4	6821902	12847424	30.96%	1.165%
96	16.730	2323	2328	2332	rBV	7540046	13727630	33.09%	1.245%
97	17.007	2371	2375	2379	rBV	6259395	9834905	23.70%	0.892%
98	17.060	2380	2384	2390	rVB	6679134	11583356	27.92%	1.050%
99	17.395	2438	2441	2445	rVB	3169920	3869198	9.33%	0.351%
100	17.748	2498	2501	2509	rVB	5761337	9477752	22.84%	0.860%

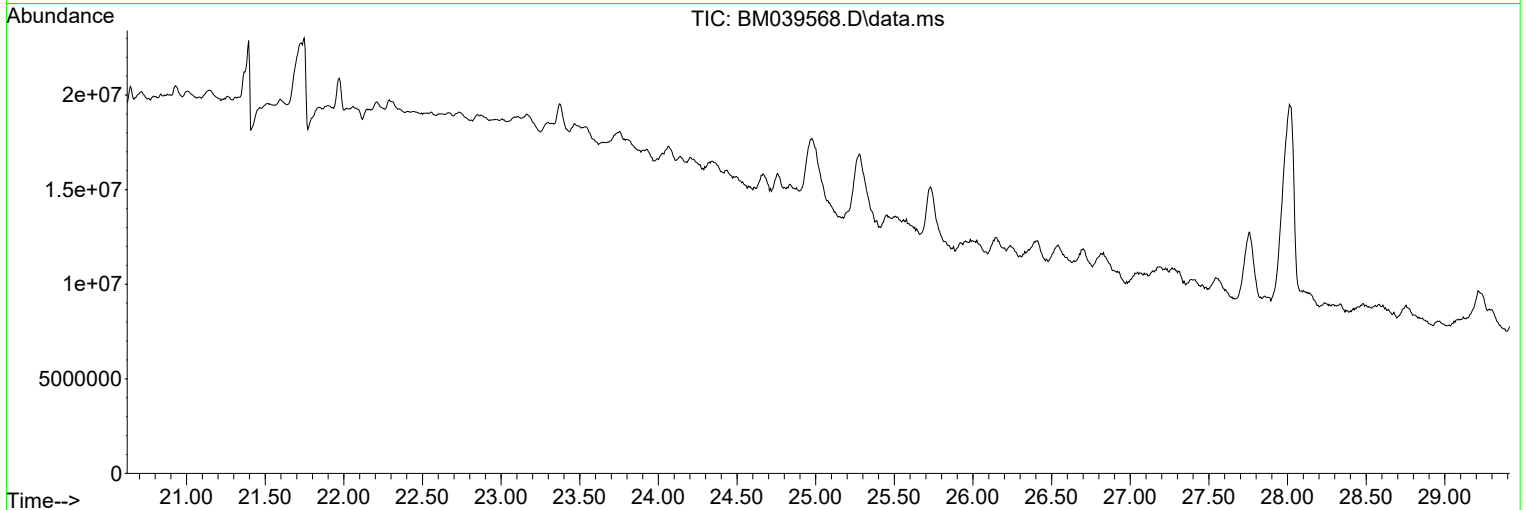
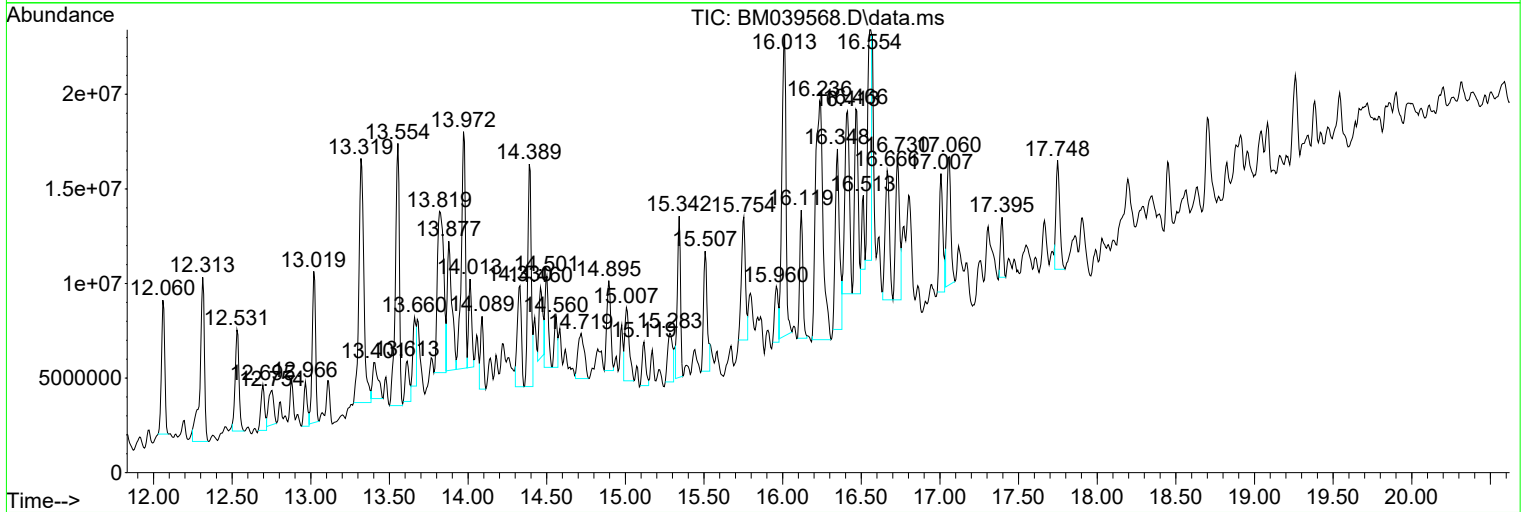
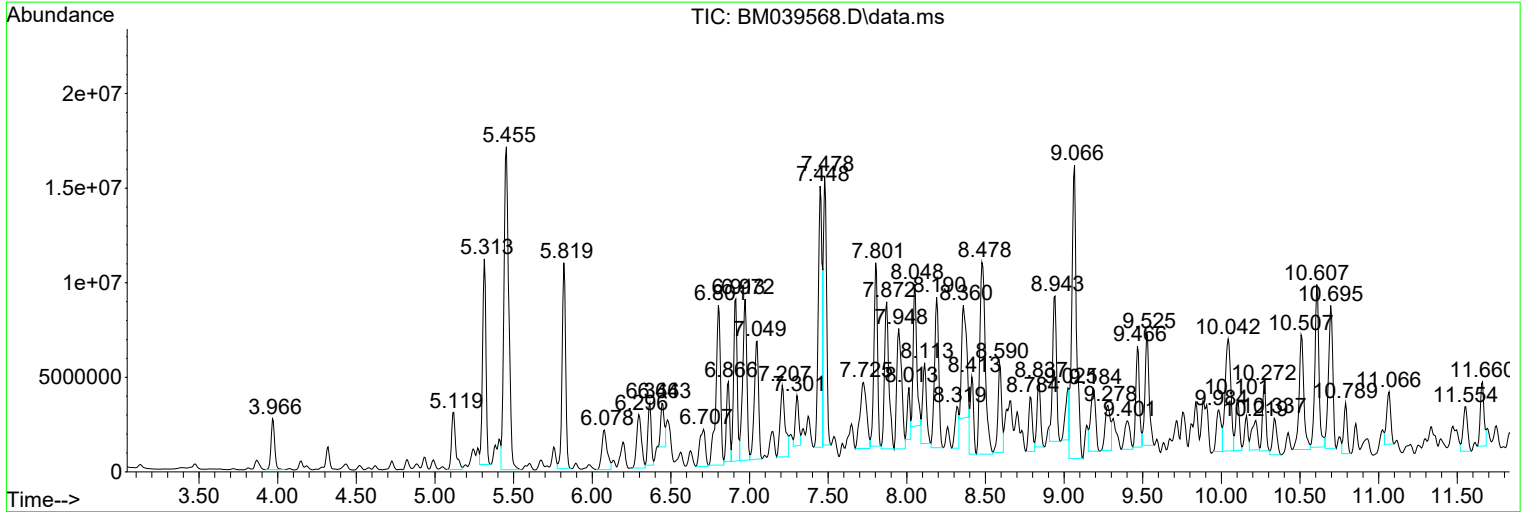
Sum of corrected areas: 1102675260

Data Path : Z:\svoasrv\HPCHEM1\BNA_M\Data\BM042123\
 Data File : BM039568.D
 Acq On : 22 Apr 2023 01:18
 Operator : CG/JU
 Sample : 02386-15
 Misc :
 ALS Vial : 16 Sample Multiplier: 1

Instrument :
 BNA_M
 ClientSampleId :
 SPA-4WC-23-04

Quant Method : Z:\svoasrv\HPCHEM1\BNA_M\Methods\8270-BM041723.M
 Quant Title : ASP BNA STANDARDS FOR 5 POINT CALIBRATION

TIC Library : C:\Database\NIST20.L
 TIC Integration Parameters: LSCINT.P



Data Path : Z:\svoasrv\HPCHEM1\BNA_M\Data\BM042123\
 Data File : BM039568.D
 Acq On : 22 Apr 2023 01:18
 Operator : CG/JU
 Sample : 02386-15
 Misc :
 ALS Vial : 16 Sample Multiplier: 1

Instrument :
 BNA_M
 ClientSampleId :
 SPA-4WC-23-04

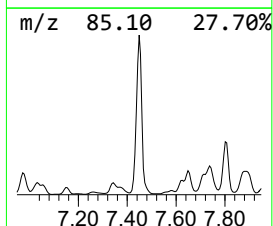
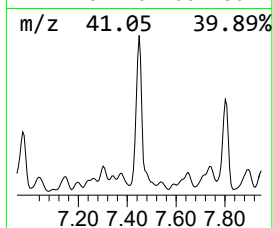
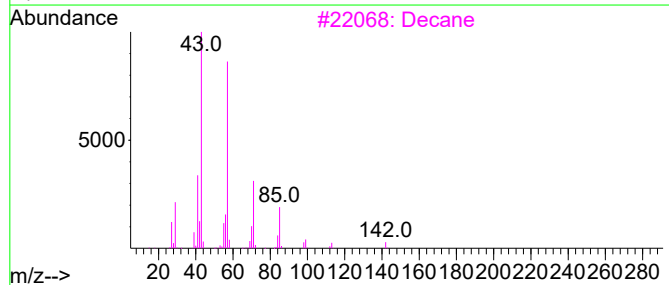
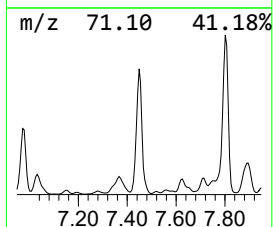
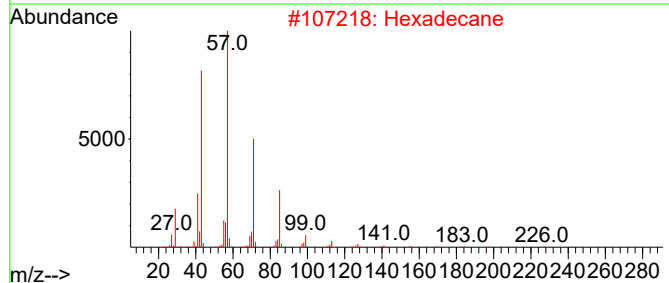
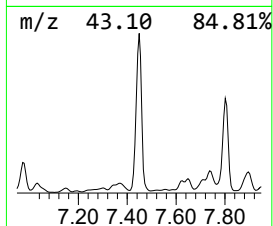
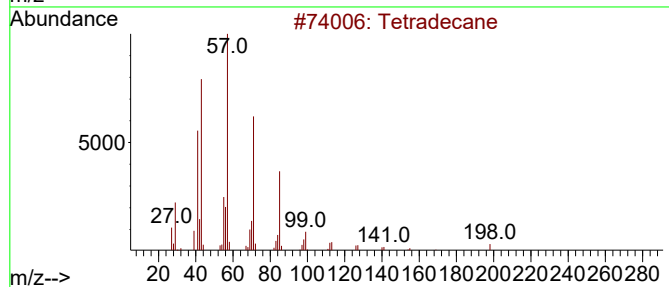
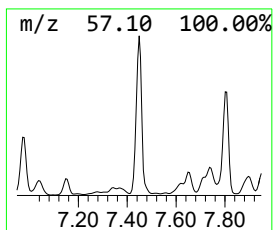
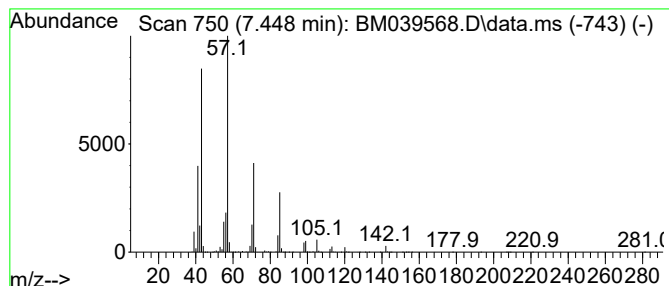
Quant Method : Z:\svoasrv\HPCHEM1\BNA_M\Methods\8270-BM041723.M
 Quant Title : ASP BNA STANDARDS FOR 5 POINT CALIBRATION

TIC Library : C:\Database\NIST20.L
 TIC Integration Parameters: LSCINT.P

 Peak Number 1 Tetradecane Concentration Rank 20

R.T.	EstConc	Area	Relative to ISTD	R.T.
7.448	32.48 ng	24831600	1,4-Dichlorobenzene-d4	7.831

Hit#	of 5	Tentative ID	MW	MolForm	CAS#	Qual
1		Tetradecane	198	C14H30	000629-59-4	90
2		Hexadecane	226	C16H34	000544-76-3	83
3		Decane	142	C10H22	000124-18-5	81
4		Nonane	128	C9H20	000111-84-2	80
5		Tridecane	184	C13H28	000629-50-5	78



Data Path : Z:\svoasrv\HPCHEM1\BNA_M\Data\BM042123\
 Data File : BM039568.D
 Acq On : 22 Apr 2023 01:18
 Operator : CG/JU
 Sample : 02386-15
 Misc :
 ALS Vial : 16 Sample Multiplier: 1

Instrument :
 BNA_M
 ClientSampleId :
 SPA-4WC-23-04

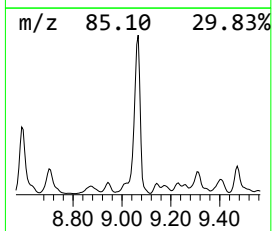
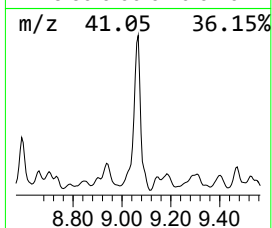
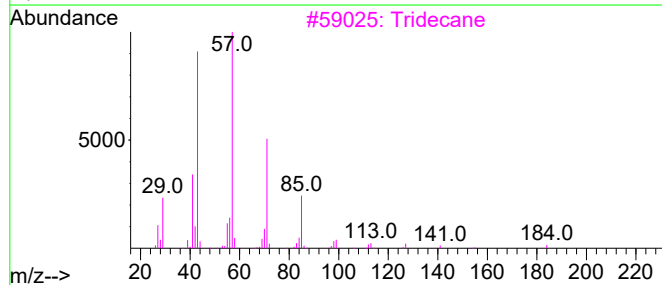
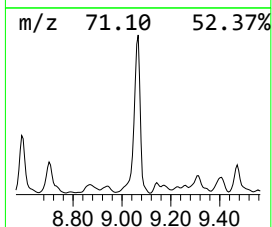
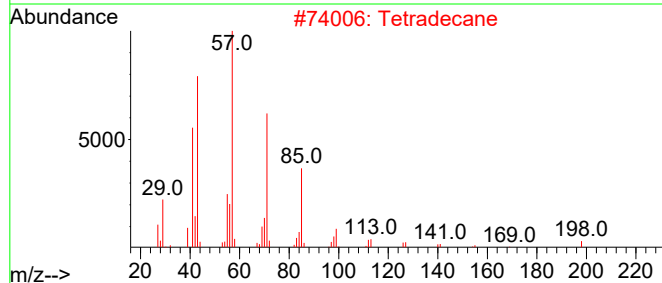
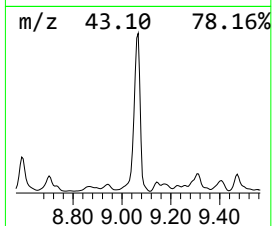
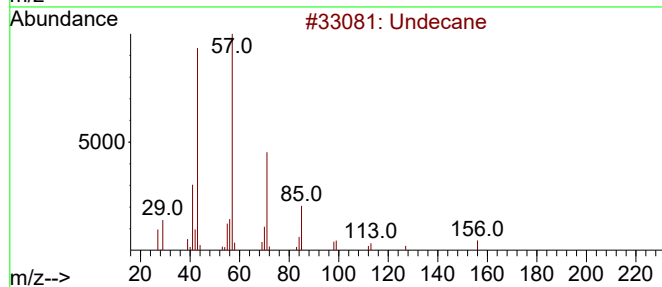
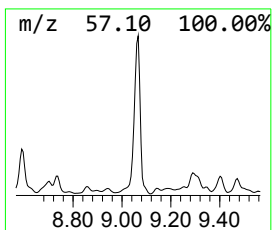
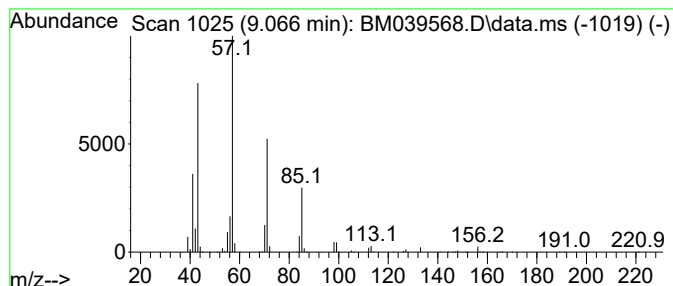
Quant Method : Z:\svoasrv\HPCHEM1\BNA_M\Methods\8270-BM041723.M
 Quant Title : ASP BNA STANDARDS FOR 5 POINT CALIBRATION

TIC Library : C:\Database\NIST20.L
 TIC Integration Parameters: LSCINT.P

 Peak Number 2 Undecane Concentration Rank 16

R.T.	EstConc	Area	Relative to ISTD	R.T.
9.066	42.41 ng	32423100	1,4-Dichlorobenzene-d4	7.831

Hit#	of 5	Tentative ID	MW	MolForm	CAS#	Qual
1		Undecane	156	C11H24	001120-21-4	91
2		Tetradecane	198	C14H30	000629-59-4	90
3		Tridecane	184	C13H28	000629-50-5	86
4		Hexadecane	226	C16H34	000544-76-3	86
5		Carbonic acid, prop-1-en-2-yl tr...	284	C17H32O3	1000382-90-8	83



Data Path : Z:\svoasrv\HPCHEM1\BNA_M\Data\BM042123\
 Data File : BM039568.D
 Acq On : 22 Apr 2023 01:18
 Operator : CG/JU
 Sample : 02386-15
 Misc :
 ALS Vial : 16 Sample Multiplier: 1

Instrument :
 BNA_M
 ClientSampleId :
 SPA-4WC-23-04

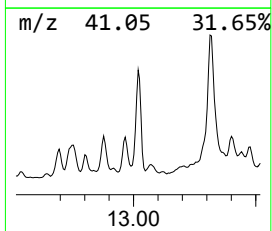
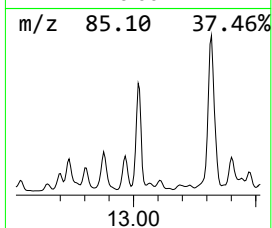
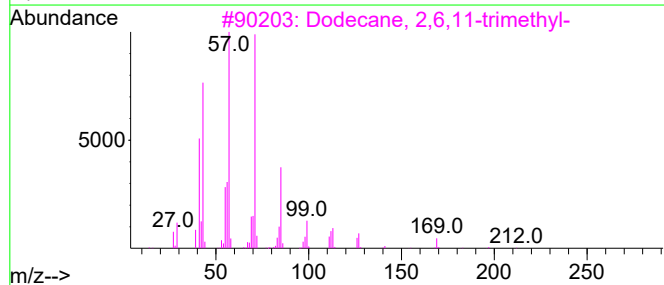
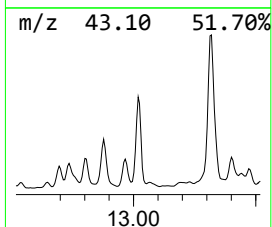
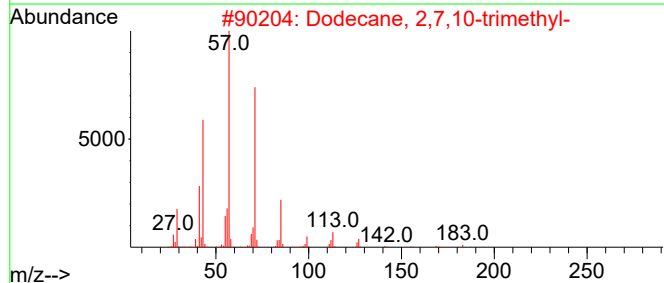
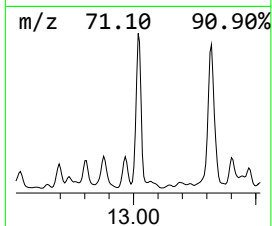
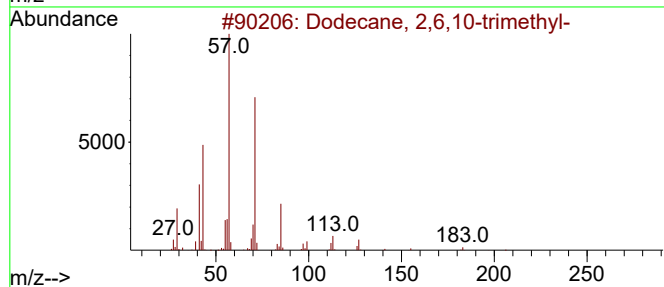
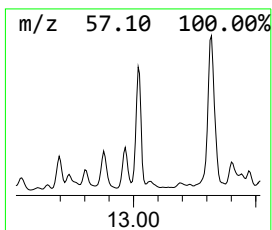
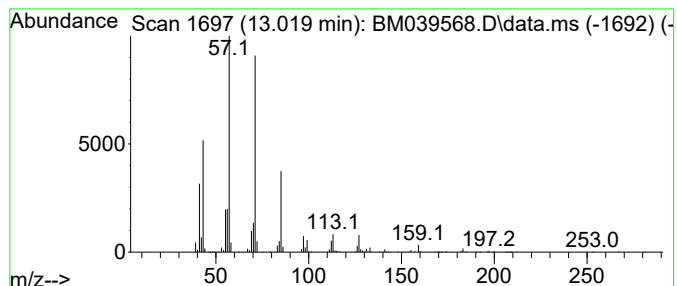
Quant Method : Z:\svoasrv\HPCHEM1\BNA_M\Methods\8270-BM041723.M
 Quant Title : ASP BNA STANDARDS FOR 5 POINT CALIBRATION

TIC Library : C:\Database\NIST20.L
 TIC Integration Parameters: LSCINT.P

 Peak Number 3 Dodecane, 2,6,10-trimethyl- Concentration Rank 18

R.T.	EstConc	Area	Relative to ISTD	R.T.
13.019	33.16 ng	11791500	Acenaphthene-d10	14.495

Hit#	of	5	Tentative ID	MW	MolForm	CAS#	Qual
1			Dodecane, 2,6,10-trimethyl-	212	C15H32	003891-98-3	90
2			Dodecane, 2,7,10-trimethyl-	212	C15H32	074645-98-0	86
3			Dodecane, 2,6,11-trimethyl-	212	C15H32	031295-56-4	72
4			Nonane, 3,7-dimethyl-	156	C11H24	017302-32-8	68
5			Oxalic acid, bis(2-ethylhexyl) e...	314	C18H34O4	1000309-39-0	53



Data Path : Z:\svoasrv\HPCHEM1\BNA_M\Data\BM042123\
 Data File : BM039568.D
 Acq On : 22 Apr 2023 01:18
 Operator : CG/JU
 Sample : 02386-15
 Misc :
 ALS Vial : 16 Sample Multiplier: 1

Instrument :
 BNA_M
 ClientSampleId :
 SPA-4WC-23-04

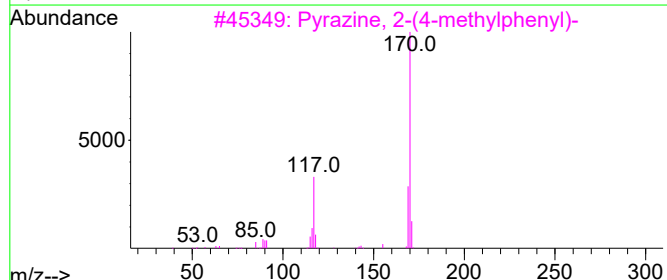
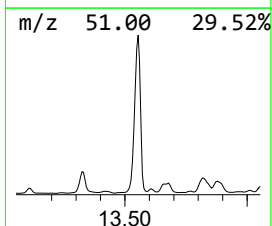
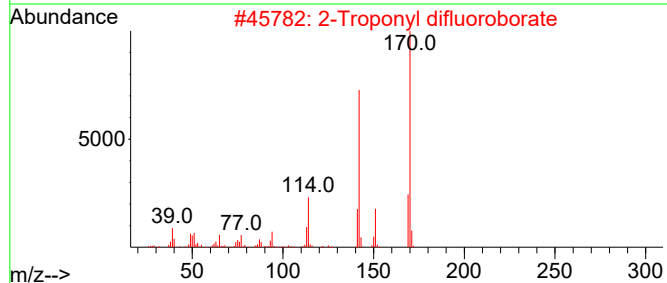
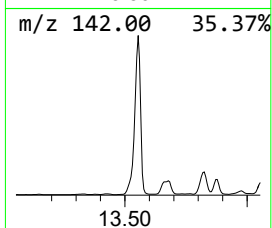
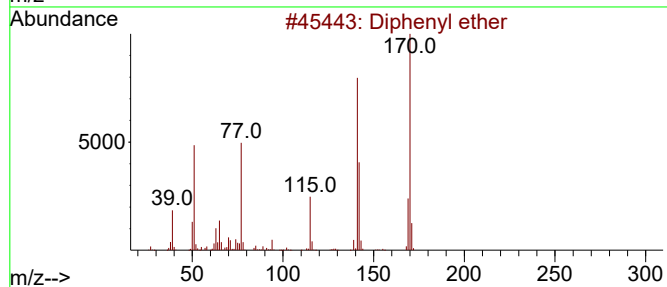
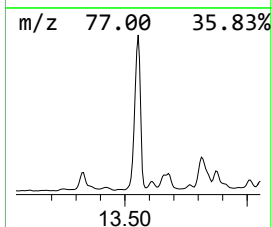
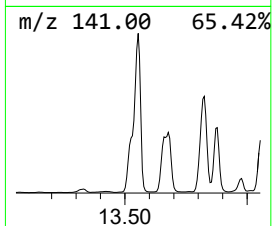
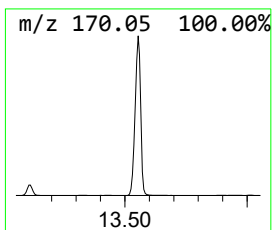
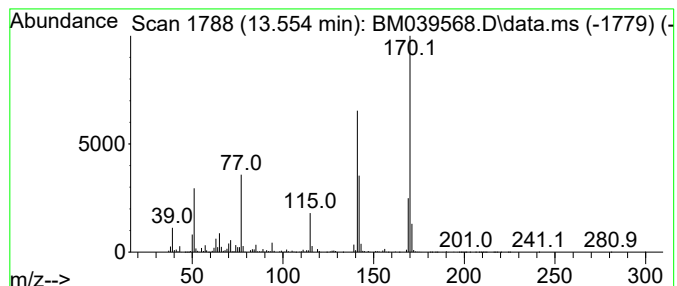
Quant Method : Z:\svoasrv\HPCHEM1\BNA_M\Methods\8270-BM041723.M
 Quant Title : ASP BNA STANDARDS FOR 5 POINT CALIBRATION

TIC Library : C:\Database\NIST20.L
 TIC Integration Parameters: LSCINT.P

 Peak Number 4 Diphenyl ether Concentration Rank 7

R.T.	EstConc	Area	Relative to ISTD	R.T.
13.554	70.37 ng	25018600	Acenaphthene-d10	14.495

Hit#	of	5	Tentative ID	MW	MolForm	CAS#	Qual
1			Diphenyl ether	170	C12H10O	000101-84-8	97
2			2-Troponyl difluoroborate	170	C7H5BF2O2	022502-10-9	47
3			Pyrazine, 2-(4-methylphenyl)-	170	C11H10N2	1000380-54-6	43
4			p-Hydroxybiphenyl	170	C12H10O	000092-69-3	38
5			8-Hydroxyquinoline-2-carbonitrile	170	C10H6N2O	006759-78-0	38



Data Path : Z:\svoasrv\HPCHEM1\BNA_M\Data\BM042123\
 Data File : BM039568.D
 Acq On : 22 Apr 2023 01:18
 Operator : CG/JU
 Sample : 02386-15
 Misc :
 ALS Vial : 16 Sample Multiplier: 1

Instrument :
 BNA_M
 ClientSampleId :
 SPA-4WC-23-04

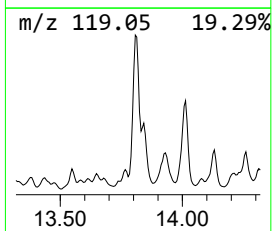
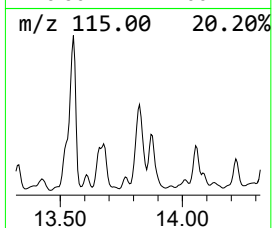
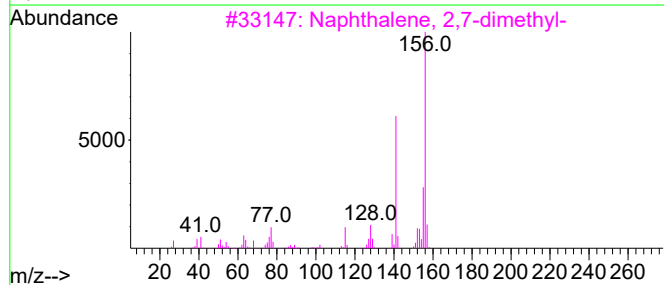
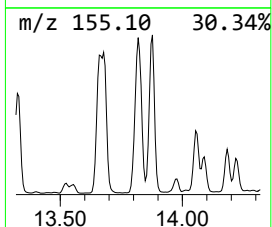
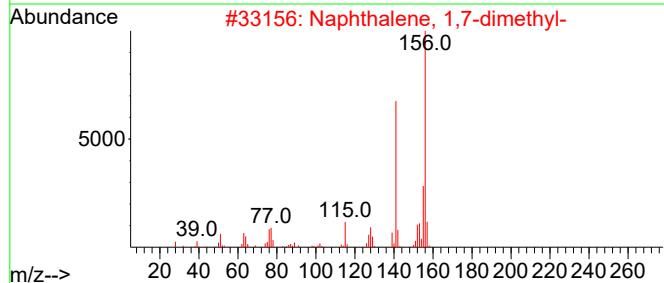
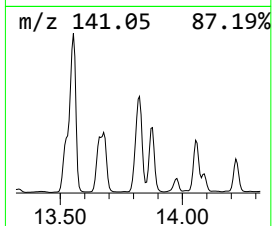
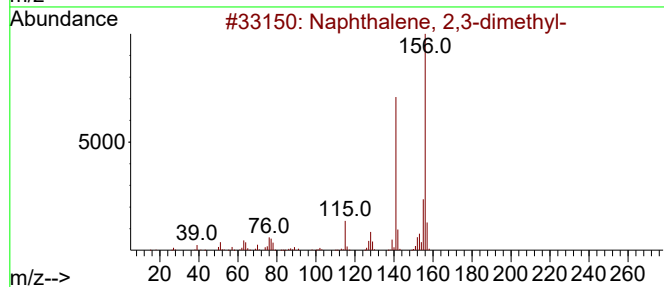
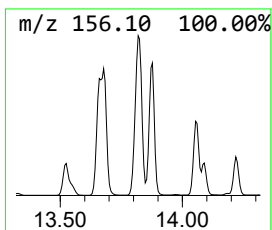
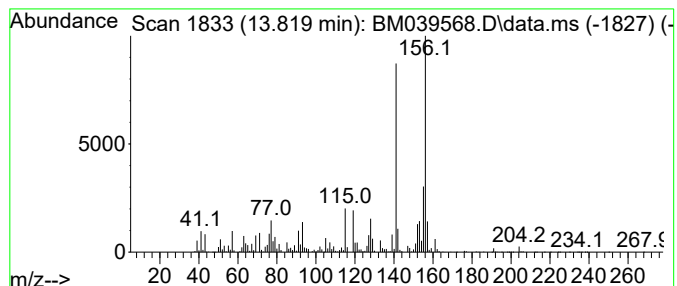
Quant Method : Z:\svoasrv\HPCHEM1\BNA_M\Methods\8270-BM041723.M
 Quant Title : ASP BNA STANDARDS FOR 5 POINT CALIBRATION

TIC Library : C:\Database\NIST20.L
 TIC Integration Parameters: LSCINT.P

 Peak Number 5 Naphthalene, 2,3-dimethyl- Concentration Rank 8

R.T.	EstConc	Area	Relative to ISTD	R.T.
13.819	69.08 ng	24561300	Acenaphthene-d10	14.495

Hit#	of	5	Tentative ID	MW	MolForm	CAS#	Qual
1			Naphthalene, 2,3-dimethyl-	156	C12H12	000581-40-8	97
2			Naphthalene, 1,7-dimethyl-	156	C12H12	000575-37-1	97
3			Naphthalene, 2,7-dimethyl-	156	C12H12	000582-16-1	97
4			Naphthalene, 1,6-dimethyl-	156	C12H12	000575-43-9	96
5			Naphthalene, 1,5-dimethyl-	156	C12H12	000571-61-9	96



Data Path : Z:\svoasrv\HPCHEM1\BNA_M\Data\BM042123\
 Data File : BM039568.D
 Acq On : 22 Apr 2023 01:18
 Operator : CG/JU
 Sample : 02386-15
 Misc :
 ALS Vial : 16 Sample Multiplier: 1

Instrument :
 BNA_M
 ClientSampleId :
 SPA-4WC-23-04

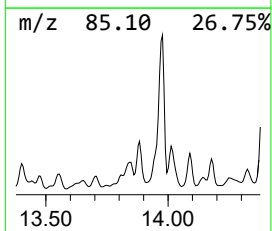
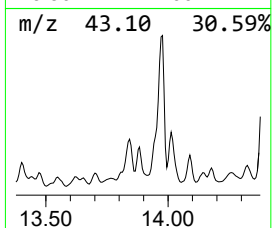
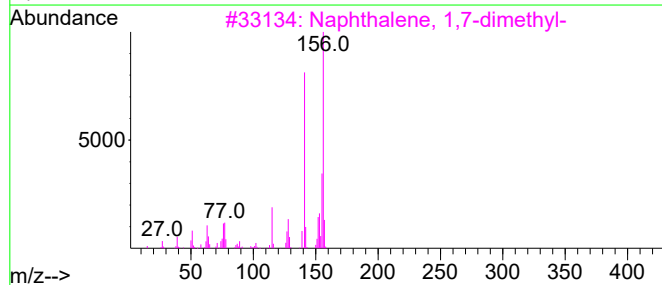
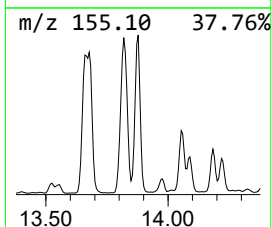
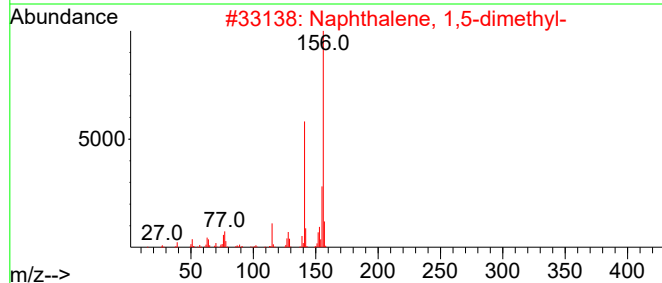
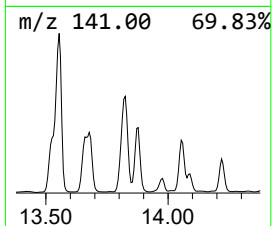
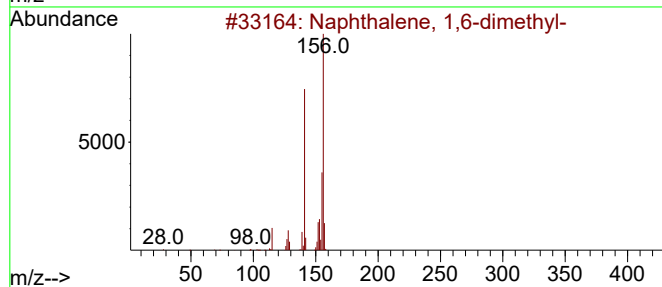
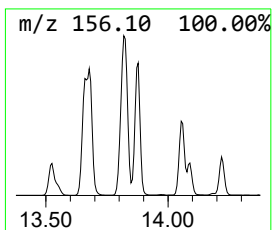
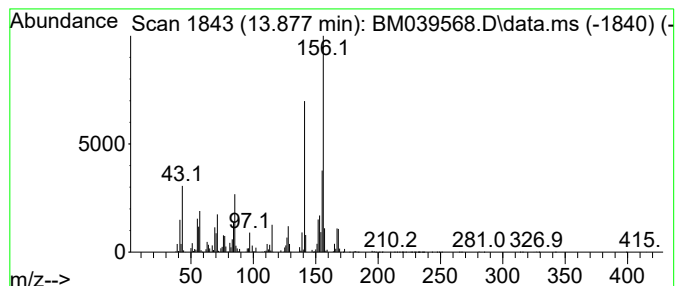
Quant Method : Z:\svoasrv\HPCHEM1\BNA_M\Methods\8270-BM041723.M
 Quant Title : ASP BNA STANDARDS FOR 5 POINT CALIBRATION

TIC Library : C:\Database\NIST20.L
 TIC Integration Parameters: LSCINT.P

 Peak Number 6 Naphthalene, 1,6-dimethyl- Concentration Rank 17

R.T.	EstConc	Area	Relative to ISTD	R.T.
13.878	39.50 ng	14045500	Acenaphthene-d10	14.495

Hit#	of	5	Tentative ID	MW	MolForm	CAS#	Qual
1			Naphthalene, 1,6-dimethyl-	156	C12H12	000575-43-9	96
2			Naphthalene, 1,5-dimethyl-	156	C12H12	000571-61-9	95
3			Naphthalene, 1,7-dimethyl-	156	C12H12	000575-37-1	93
4			Naphthalene, 1,8-dimethyl-	156	C12H12	000569-41-5	93
5			Naphthalene, 2,6-dimethyl-	156	C12H12	000581-42-0	93



Data Path : Z:\svoasrv\HPCHEM1\BNA_M\Data\BM042123\
 Data File : BM039568.D
 Acq On : 22 Apr 2023 01:18
 Operator : CG/JU
 Sample : 02386-15
 Misc :
 ALS Vial : 16 Sample Multiplier: 1

Instrument :
 BNA_M
 ClientSampleId :
 SPA-4WC-23-04

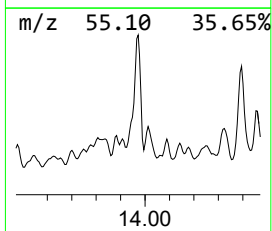
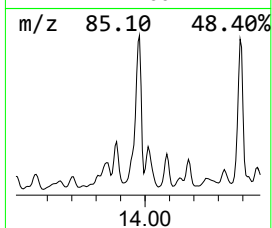
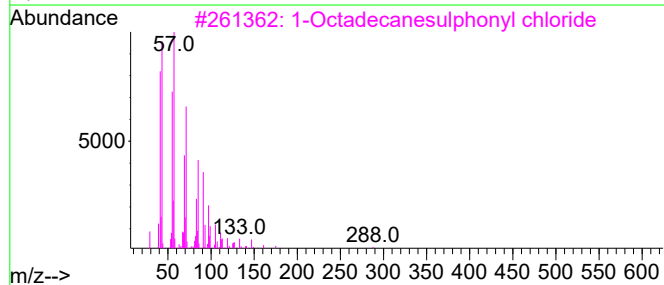
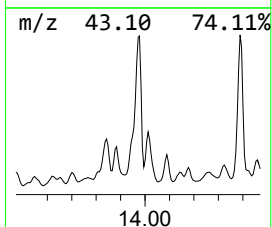
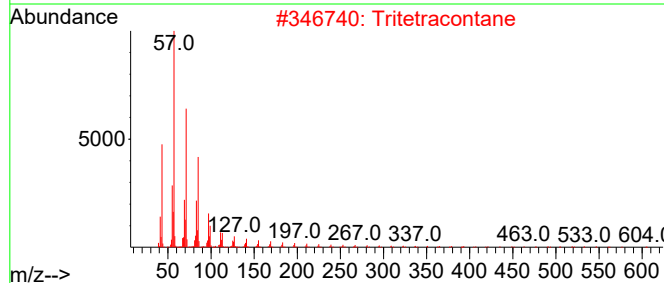
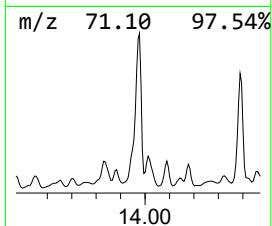
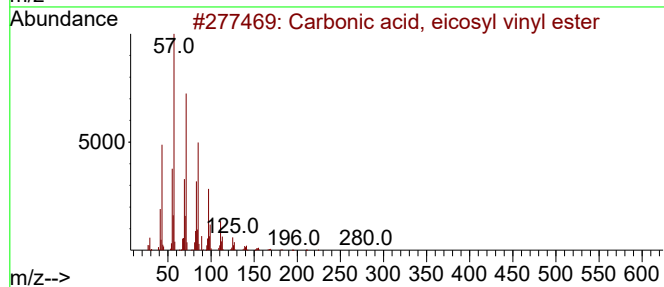
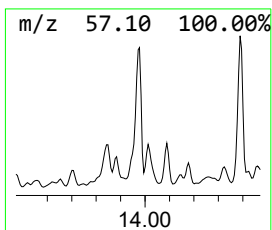
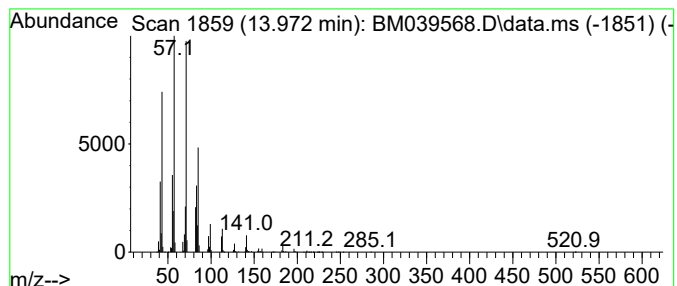
Quant Method : Z:\svoasrv\HPCHEM1\BNA_M\Methods\8270-BM041723.M
 Quant Title : ASP BNA STANDARDS FOR 5 POINT CALIBRATION

TIC Library : C:\Database\NIST20.L
 TIC Integration Parameters: LSCINT.P

 Peak Number 7 Carbonic acid, eicosyl vinyl... Concentration Rank 10

R.T.	EstConc	Area	Relative to ISTD	R.T.
13.972	63.19 ng	22467800	Acenaphthene-d10	14.495

Hit#	of	5	Tentative ID	MW	MolForm	CAS#	Qual
1			Carbonic acid, eicosyl vinyl ester	368	C23H44O3	1000382-54-3	87
2			Tritetracontane	605	C43H88	007098-21-7	72
3			1-Octadecanesulphonyl chloride	352	C18H37ClO2S	1000342-70-4	72
4			Decane, 5-propyl-	184	C13H28	017312-62-8	58
5			Dodecane, 4,6-dimethyl-	198	C14H30	061141-72-8	52



Data Path : Z:\svoasrv\HPCHEM1\BNA_M\Data\BM042123\
 Data File : BM039568.D
 Acq On : 22 Apr 2023 01:18
 Operator : CG/JU
 Sample : 02386-15
 Misc :
 ALS Vial : 16 Sample Multiplier: 1

Instrument :
 BNA_M
 ClientSampleId :
 SPA-4WC-23-04

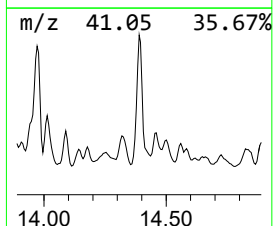
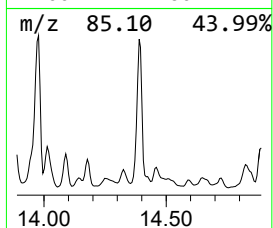
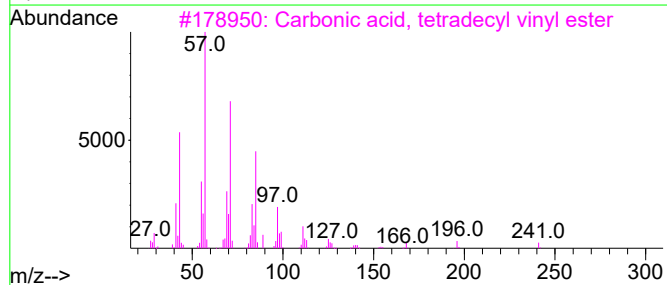
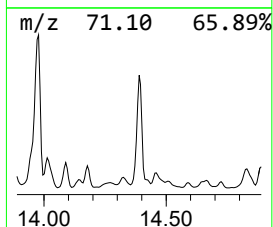
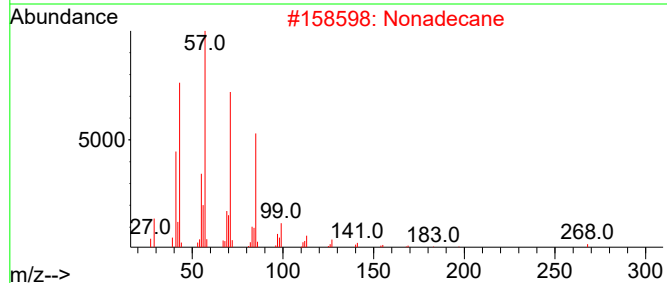
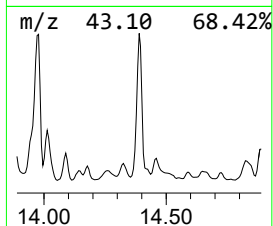
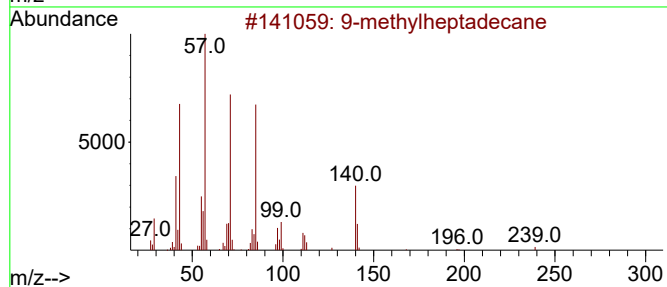
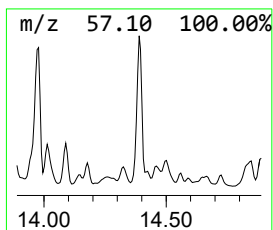
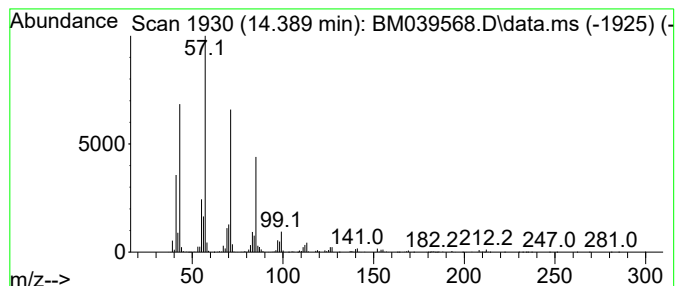
Quant Method : Z:\svoasrv\HPCHEM1\BNA_M\Methods\8270-BM041723.M
 Quant Title : ASP BNA STANDARDS FOR 5 POINT CALIBRATION

TIC Library : C:\Database\NIST20.L
 TIC Integration Parameters: LSCINT.P

 Peak Number 8 9-methylheptadecane Concentration Rank 12

R.T.	EstConc	Area	Relative to ISTD	R.T.
14.389	52.91 ng	18811300	Acenaphthene-d10	14.495

Hit#	of	5	Tentative ID	MW	MolForm	CAS#	Qual
1			9-methylheptadecane	254	C18H38	026741-18-4	90
2			Nonadecane	268	C19H40	000629-92-5	86
3			Carbonic acid, tetradecyl vinyl ...	284	C17H32O3	1000382-54-5	80
4			Tetradecane	198	C14H30	000629-59-4	80
5			Dodecane, 2-methyl-6-propyl-	226	C16H34	055045-08-4	80



Data Path : Z:\svoasrv\HPCHEM1\BNA_M\Data\BM042123\
 Data File : BM039568.D
 Acq On : 22 Apr 2023 01:18
 Operator : CG/JU
 Sample : 02386-15
 Misc :
 ALS Vial : 16 Sample Multiplier: 1

Instrument :
 BNA_M
 ClientSampleId :
 SPA-4WC-23-04

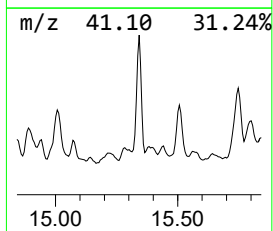
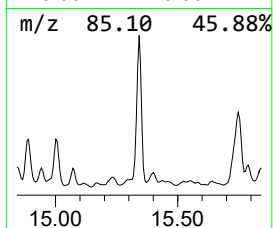
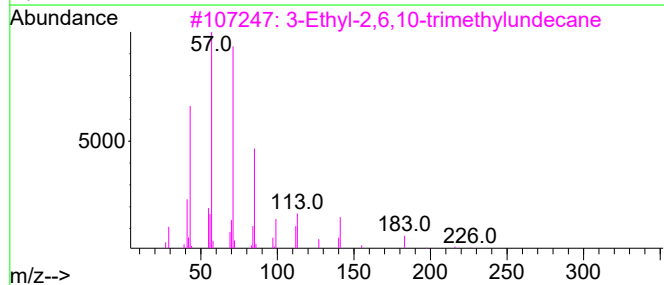
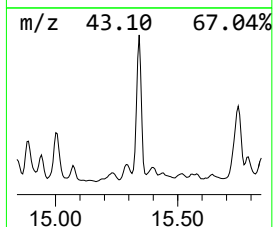
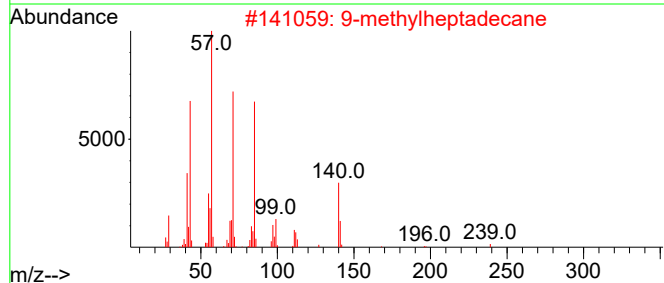
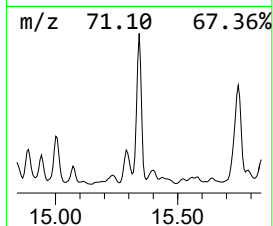
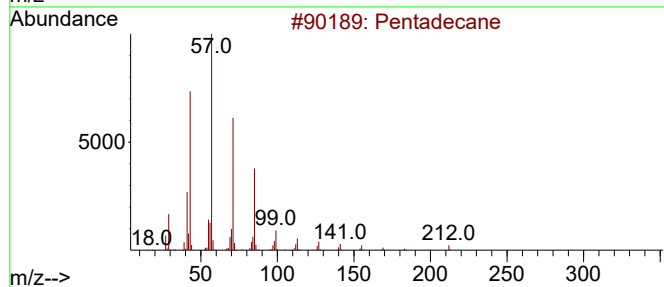
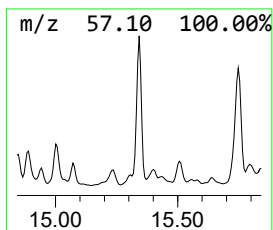
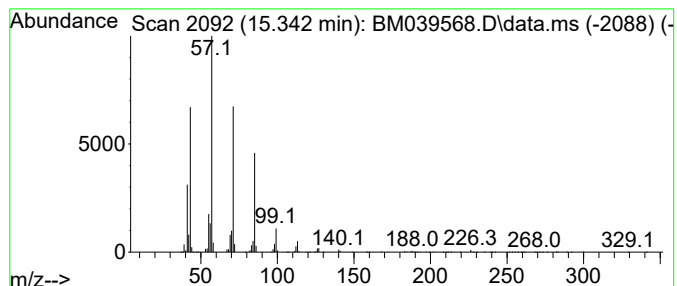
Quant Method : Z:\svoasrv\HPCHEM1\BNA_M\Methods\8270-BM041723.M
 Quant Title : ASP BNA STANDARDS FOR 5 POINT CALIBRATION

TIC Library : C:\Database\NIST20.L
 TIC Integration Parameters: LSCINT.P

 Peak Number 9 Pentadecane Concentration Rank 19

R.T.	EstConc	Area	Relative to ISTD	R.T.
15.342	32.51 ng	11559100	Acenaphthene-d10	14.495

Hit#	of	5	Tentative ID	MW	MolForm	CAS#	Qual
1			Pentadecane	212	C15H32	000629-62-9	90
2			9-methylheptadecane	254	C18H38	026741-18-4	90
3			3-Ethyl-2,6,10-trimethylundecane	226	C16H34	1000432-25-9	87
4			Pentadecane, 7-methyl-	226	C16H34	006165-40-8	87
5			Decane, 2,3,5-trimethyl-	184	C13H28	062238-11-3	83



Data Path : Z:\svoasrv\HPCHEM1\BNA_M\Data\BM042123\
 Data File : BM039568.D
 Acq On : 22 Apr 2023 01:18
 Operator : CG/JU
 Sample : 02386-15
 Misc :
 ALS Vial : 16 Sample Multiplier: 1

Instrument :
 BNA_M
 ClientSampleId :
 SPA-4WC-23-04

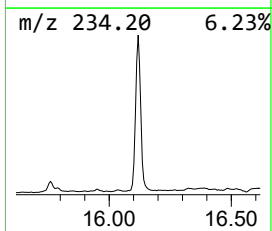
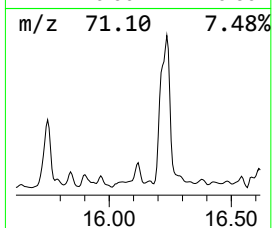
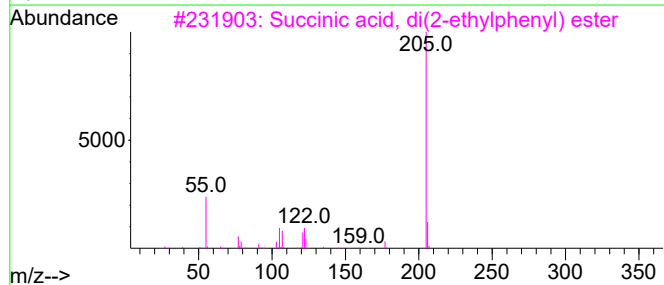
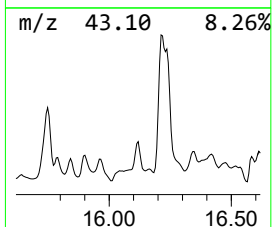
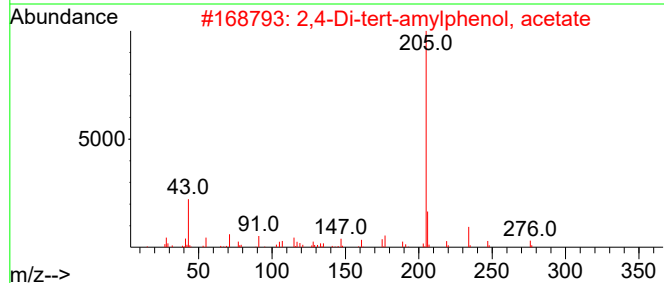
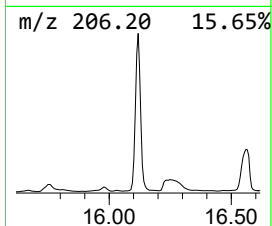
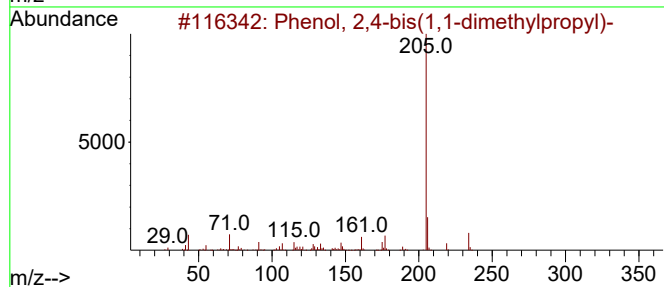
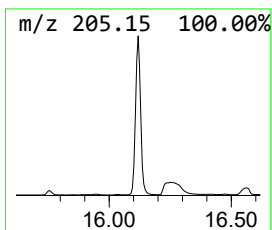
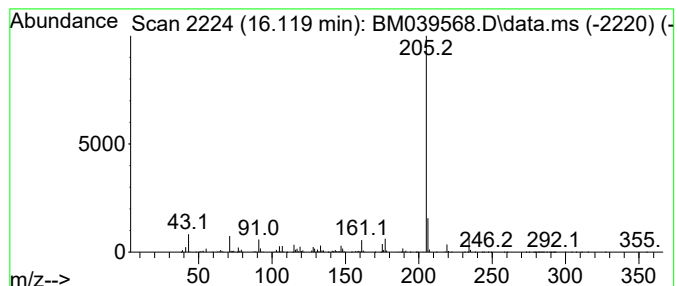
Quant Method : Z:\svoasrv\HPCHEM1\BNA_M\Methods\8270-BM041723.M
 Quant Title : ASP BNA STANDARDS FOR 5 POINT CALIBRATION

TIC Library : C:\Database\NIST20.L
 TIC Integration Parameters: LSCINT.P

 Peak Number 10 Phenol, 2,4-bis(1,1-dimethy... Concentration Rank 15

R.T.	EstConc	Area	Relative to ISTD	R.T.
16.119	48.87 ng	9454910	Phenanthrene-d10	17.260

Hit#	of	5	Tentative ID	MW	MolForm	CAS#	Qual
1			Phenol, 2,4-bis(1,1-dimethylprop...	234	C16H26O	000120-95-6	97
2			2,4-Di-tert-amylphenol, acetate	276	C18H28O2	1000467-03-0	74
3			Succinic acid, di(2-ethylphenyl)...	326	C20H22O4	1000389-95-7	64
4			6-Phenylisoquinoline	205	C15H11N	070125-61-0	64
5			Butylated Hydroxytoluene	220	C15H24O	000128-37-0	50



Data Path : Z:\svoasrv\HPCHEM1\BNA_M\Data\BM042123\
 Data File : BM039568.D
 Acq On : 22 Apr 2023 01:18
 Operator : CG/JU
 Sample : 02386-15
 Misc :
 ALS Vial : 16 Sample Multiplier: 1

Instrument :
 BNA_M
 ClientSampleId :
 SPA-4WC-23-04

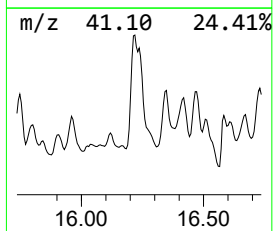
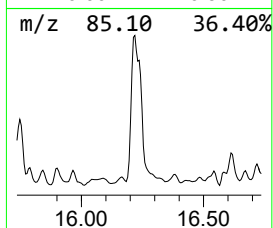
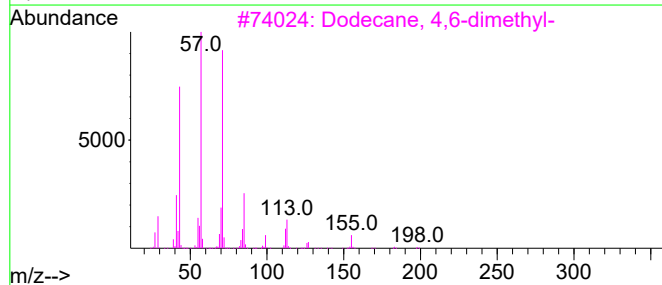
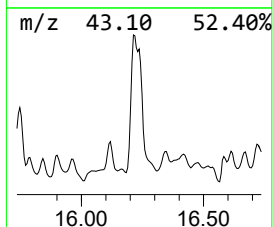
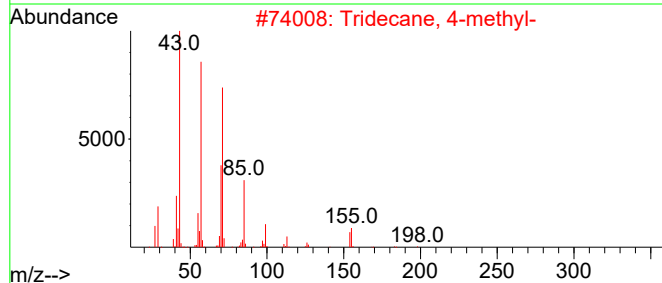
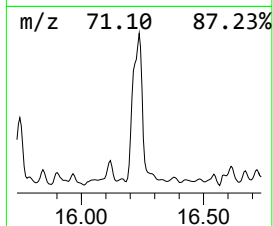
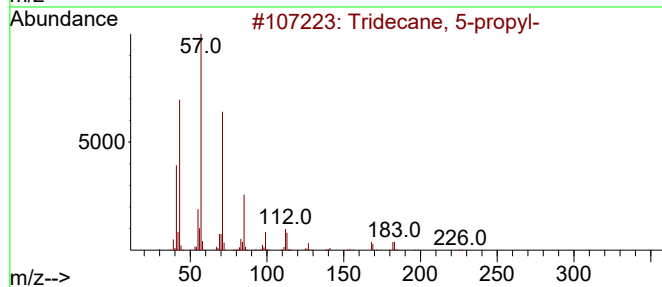
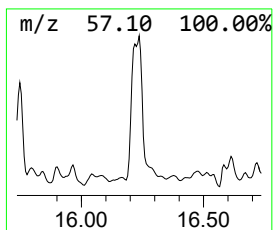
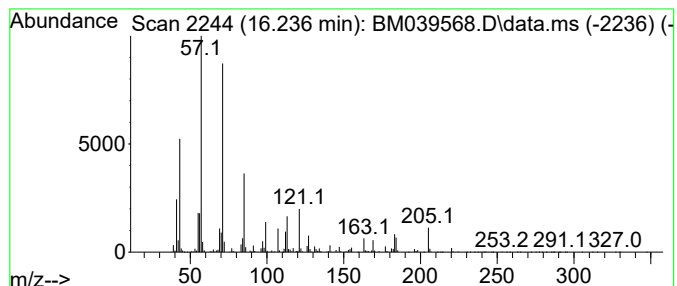
Quant Method : Z:\svoasrv\HPCHEM1\BNA_M\Methods\8270-BM041723.M
 Quant Title : ASP BNA STANDARDS FOR 5 POINT CALIBRATION

TIC Library : C:\Database\NIST20.L
 TIC Integration Parameters: LSCINT.P

 Peak Number 11 Tridecane, 5-propyl- Concentration Rank 1

R.T.	EstConc	Area	Relative to ISTD	R.T.
16.236	214.47 ng	41490700	Phenanthrene-d10	17.260

Hit#	of 5	Tentative ID	MW	MolForm	CAS#	Qual
1		Tridecane, 5-propyl-	226	C16H34	055045-11-9	80
2		Tridecane, 4-methyl-	198	C14H30	026730-12-1	76
3		Dodecane, 4,6-dimethyl-	198	C14H30	061141-72-8	72
4		Nonane, 3,7-dimethyl-	156	C11H24	017302-32-8	70
5		Sulfurous acid, decyl 2-ethylhex...	334	C18H38O3S	1000309-19-3	68



Data Path : Z:\svoasrv\HPCHEM1\BNA_M\Data\BM042123\
 Data File : BM039568.D
 Acq On : 22 Apr 2023 01:18
 Operator : CG/JU
 Sample : 02386-15
 Misc :
 ALS Vial : 16 Sample Multiplier: 1

Instrument :
 BNA_M
 ClientSampleId :
 SPA-4WC-23-04

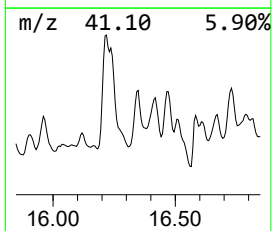
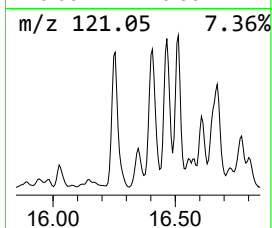
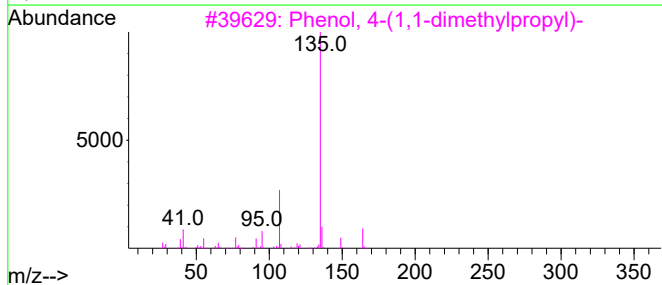
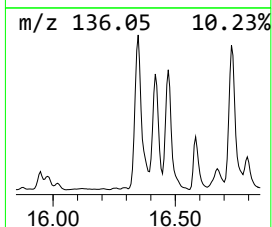
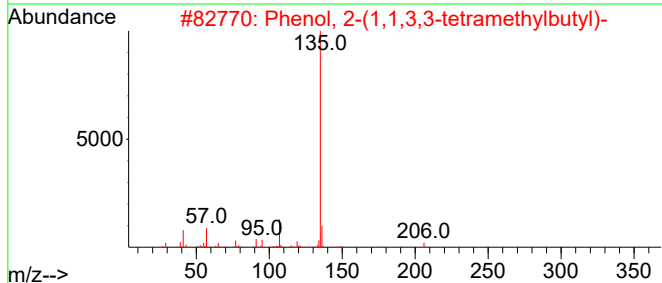
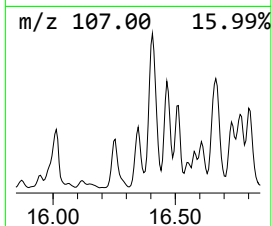
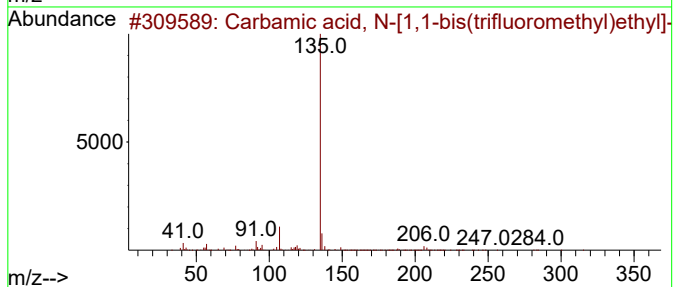
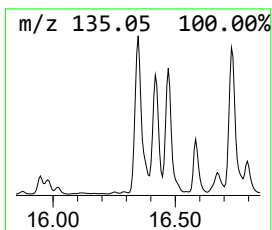
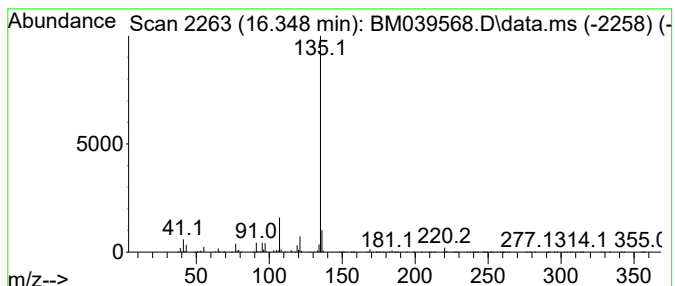
Quant Method : Z:\svoasrv\HPCHEM1\BNA_M\Methods\8270-BM041723.M
 Quant Title : ASP BNA STANDARDS FOR 5 POINT CALIBRATION

TIC Library : C:\Database\NIST20.L
 TIC Integration Parameters: LSCINT.P

 Peak Number 12 Carbamic acid, N-[1,1-bis(t... Concentration Rank 4

R.T.	EstConc	Area	Relative to ISTD	R.T.
16.348	94.05 ng	18194100	Phenanthrene-d10	17.260

Hit#	of	5	Tentative ID	MW	MolForm	CAS#	Qual
1			Carbamic acid, N-[1,1-bis(triflu...	413	C19H25F6NO2	296242-69-8	72
2			Phenol, 2-(1,1,3,3-tetramethylbu...	206	C14H22O	003884-95-5	72
3			Phenol, 4-(1,1-dimethylpropyl)-	164	C11H16O	000080-46-6	72
4			Phenol, 4-(1,1,3,3-tetramethylbu...	206	C14H22O	000140-66-9	72
5			1-n-Hexyladamantane	220	C16H28	022458-75-9	59



Data Path : Z:\svoasrv\HPCHEM1\BNA_M\Data\BM042123\
 Data File : BM039568.D
 Acq On : 22 Apr 2023 01:18
 Operator : CG/JU
 Sample : 02386-15
 Misc :
 ALS Vial : 16 Sample Multiplier: 1

Instrument :
 BNA_M
 ClientSampleId :
 SPA-4WC-23-04

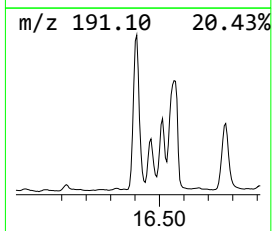
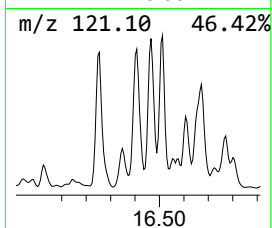
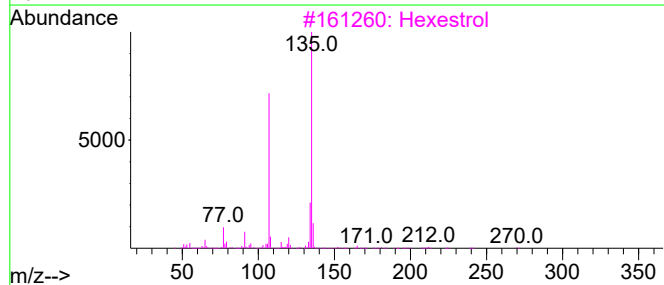
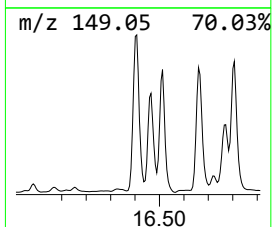
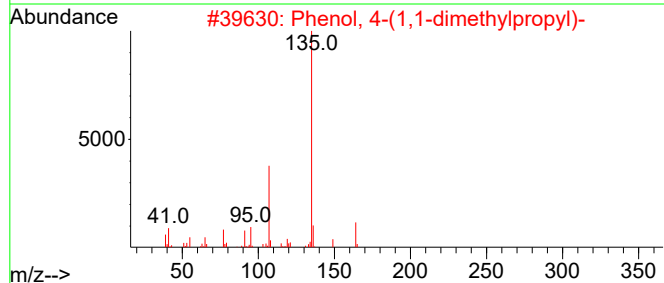
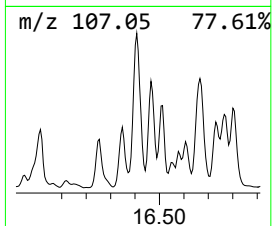
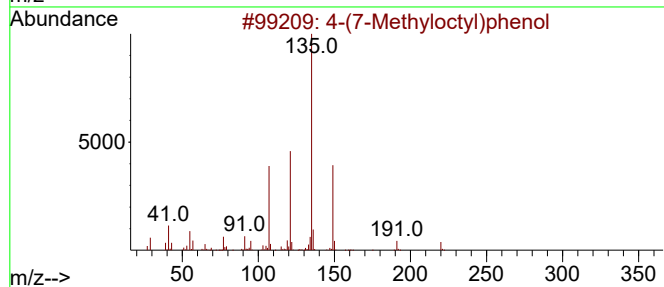
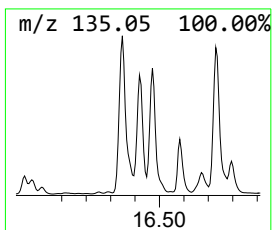
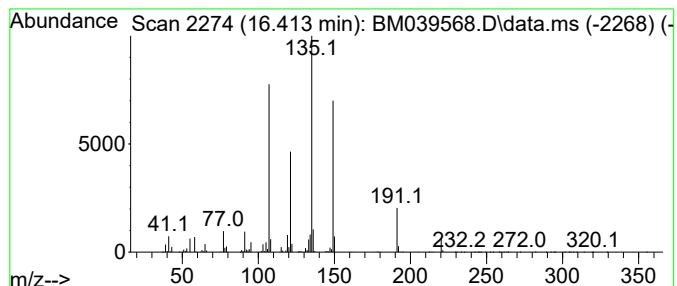
Quant Method : Z:\svoasrv\HPCHEM1\BNA_M\Methods\8270-BM041723.M
 Quant Title : ASP BNA STANDARDS FOR 5 POINT CALIBRATION

TIC Library : C:\Database\NIST20.L
 TIC Integration Parameters: LSCINT.P

 Peak Number 13 4-(7-Methyloctyl)phenol Concentration Rank 3

R.T.	EstConc	Area	Relative to ISTD	R.T.
16.413	101.51 ng	19637200	Phenanthrene-d10	17.260

Hit#	of 5	Tentative ID	MW	MolForm	CAS#	Qual
1		4-(7-Methyloctyl)phenol	220	C15H24O	024518-48-7	95
2		Phenol, 4-(1,1-dimethylpropyl)-	164	C11H16O	000080-46-6	50
3		Hexestrol	270	C18H22O2	000084-16-2	50
4		Phenol, m-tert-butyl-	150	C10H14O	000585-34-2	50
5		Phenol, 2-(1,1-dimethylethyl)-	150	C10H14O	000088-18-6	50



Data Path : Z:\svoasrv\HPCHEM1\BNA_M\Data\BM042123\
 Data File : BM039568.D
 Acq On : 22 Apr 2023 01:18
 Operator : CG/JU
 Sample : 02386-15
 Misc :
 ALS Vial : 16 Sample Multiplier: 1

Instrument :
 BNA_M
 ClientSampleId :
 SPA-4WC-23-04

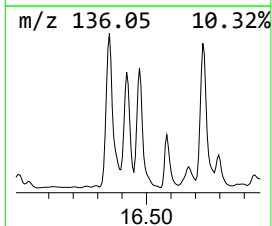
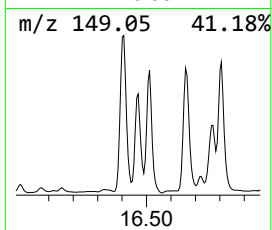
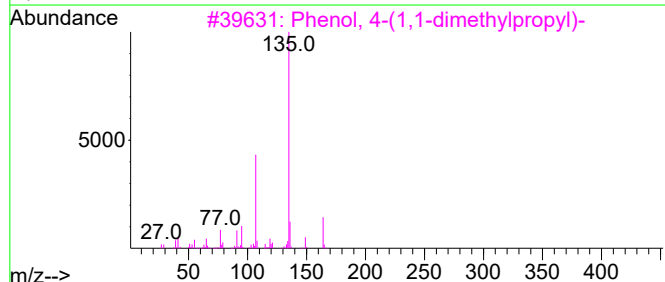
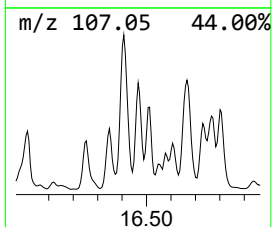
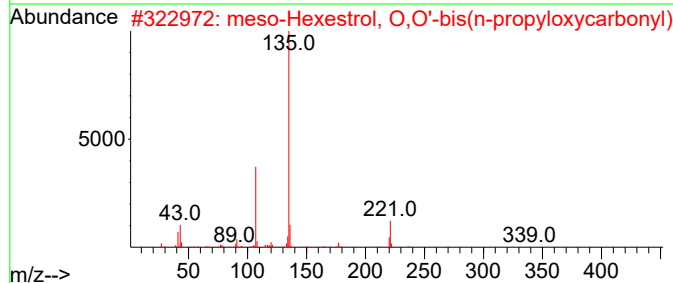
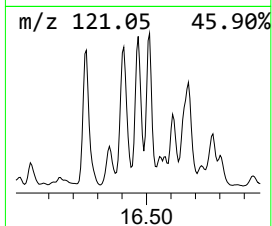
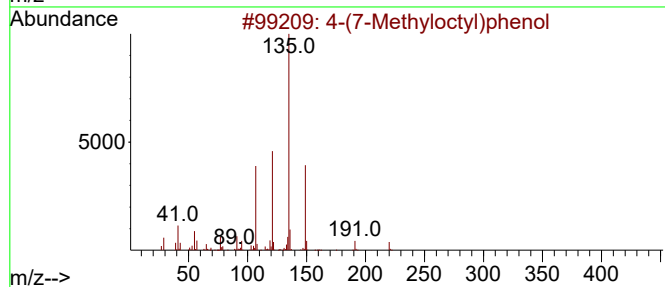
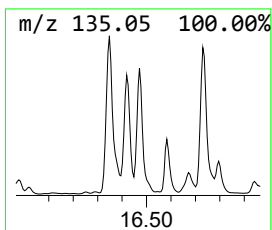
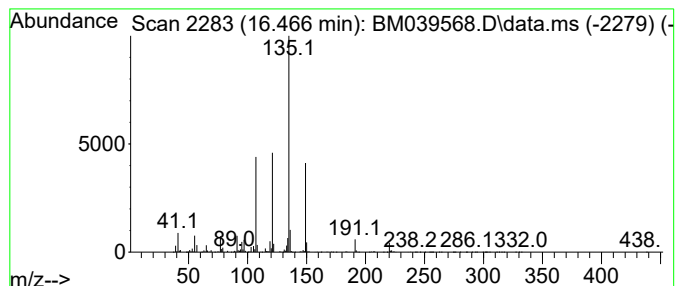
Quant Method : Z:\svoasrv\HPCHEM1\BNA_M\Methods\8270-BM041723.M
 Quant Title : ASP BNA STANDARDS FOR 5 POINT CALIBRATION

TIC Library : C:\Database\NIST20.L
 TIC Integration Parameters: LSCINT.P

 Peak Number 14 meso-Hexestrol, O,O'-bis(n-... Concentration Rank 5

R.T.	EstConc	Area	Relative to ISTD	R.T.
16.466	82.86 ng	16029300	Phenanthrene-d10	17.260

Hit#	of 5	Tentative ID	MW	MolForm	CAS#	Qual
1		4-(7-Methyloctyl)phenol	220	C15H24O	024518-48-7	98
2		meso-Hexestrol, O,O'-bis(n-propy...	442	C26H34O6	1000487-65-0	53
3		Phenol, 4-(1,1-dimethylpropyl)-	164	C11H16O	000080-46-6	50
4		Phenol, p-tert-butyl-	150	C10H14O	000098-54-4	50
5		Phenol, 2-(1,1-dimethylethyl)-	150	C10H14O	000088-18-6	50



Data Path : Z:\svoasrv\HPCHEM1\BNA_M\Data\BM042123\
 Data File : BM039568.D
 Acq On : 22 Apr 2023 01:18
 Operator : CG/JU
 Sample : 02386-15
 Misc :
 ALS Vial : 16 Sample Multiplier: 1

Instrument :
 BNA_M
 ClientSampleId :
 SPA-4WC-23-04

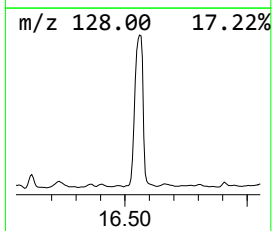
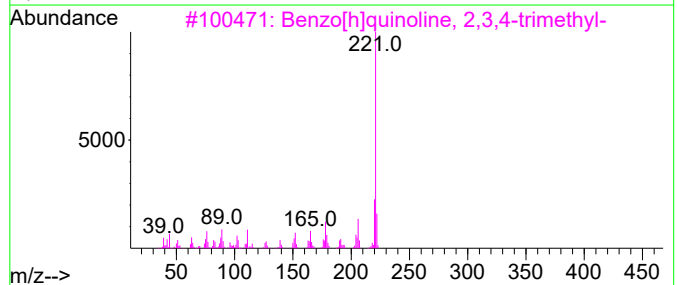
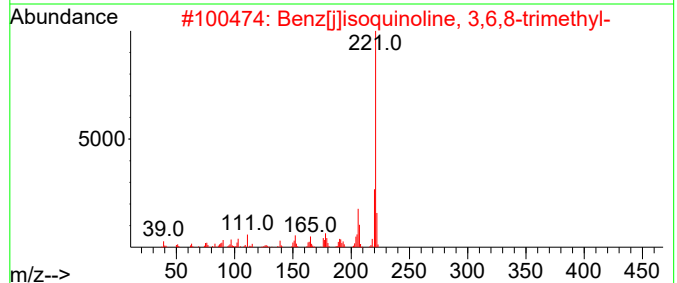
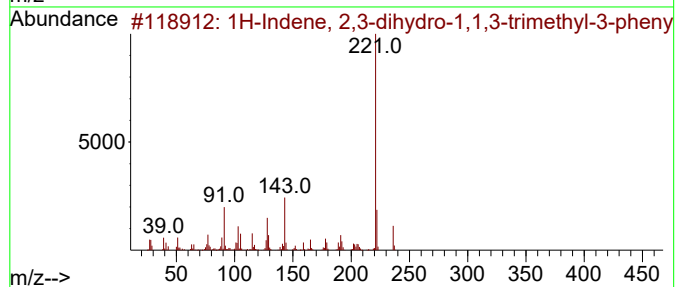
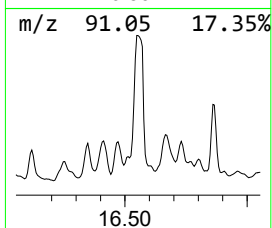
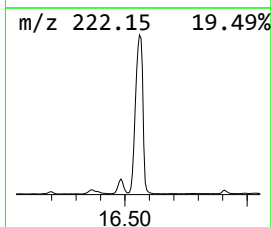
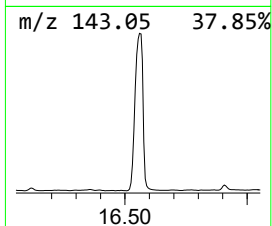
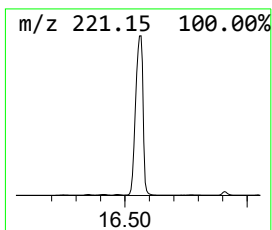
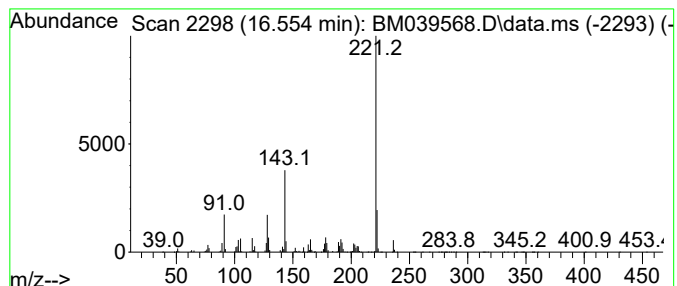
Quant Method : Z:\svoasrv\HPCHEM1\BNA_M\Methods\8270-BM041723.M
 Quant Title : ASP BNA STANDARDS FOR 5 POINT CALIBRATION

TIC Library : C:\Database\NIST20.L
 TIC Integration Parameters: LSCINT.P

 Peak Number 15 1H-Indene, 2,3-dihydro-1,1,... Concentration Rank 2

R.T.	EstConc	Area	Relative to ISTD	R.T.
16.554	112.18 ng	21702100	Phenanthrene-d10	17.260

Hit#	of	5	Tentative ID	MW	MolForm	CAS#	Qual
1			1H-Indene, 2,3-dihydro-1,1,3-tri...	236	C18H20	003910-35-8	93
2			Benz[j]isoquinoline, 3,6,8-trime...	221	C16H15N	061171-16-2	50
3			Benzo[h]quinoline, 2,3,4-trimethyl-	221	C16H15N	063042-66-0	50
4			1-(2-Hydroxy-4,5-dimethylphenyl)...	236	C13H20O2Si	1000484-73-7	50
5			(E)-2-Hydroxy-4'-cyano-stilbene	221	C15H11NO	1000147-85-5	45



Data Path : Z:\svoasrv\HPCHEM1\BNA_M\Data\BM042123\
 Data File : BM039568.D
 Acq On : 22 Apr 2023 01:18
 Operator : CG/JU
 Sample : 02386-15
 Misc :
 ALS Vial : 16 Sample Multiplier: 1

Instrument :
 BNA_M
 ClientSampleId :
 SPA-4WC-23-04

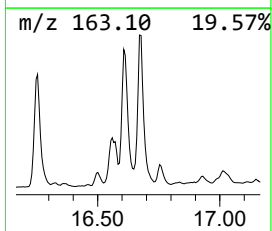
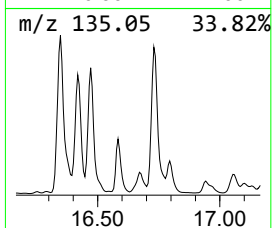
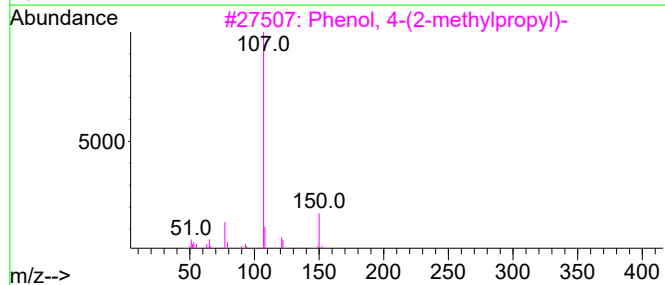
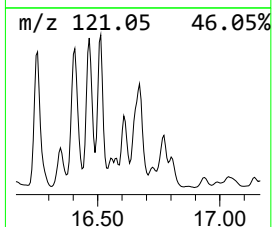
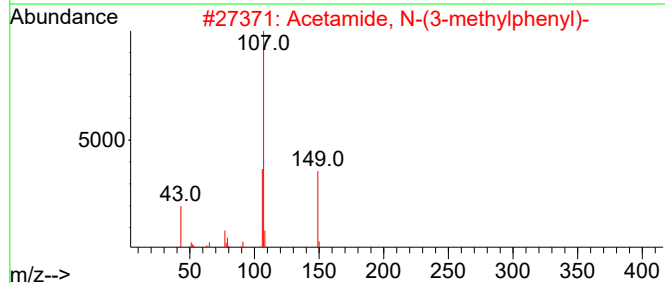
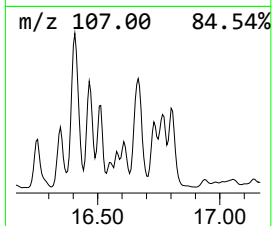
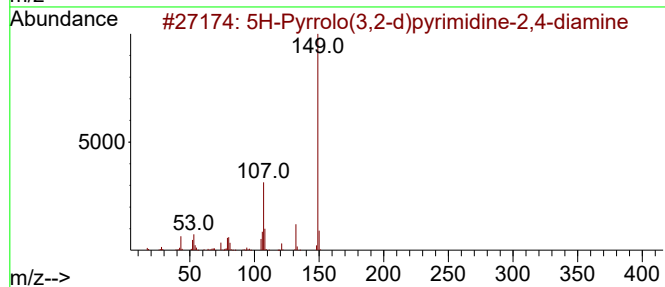
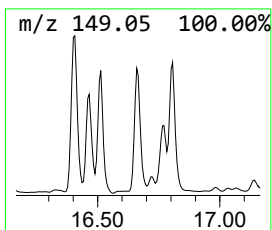
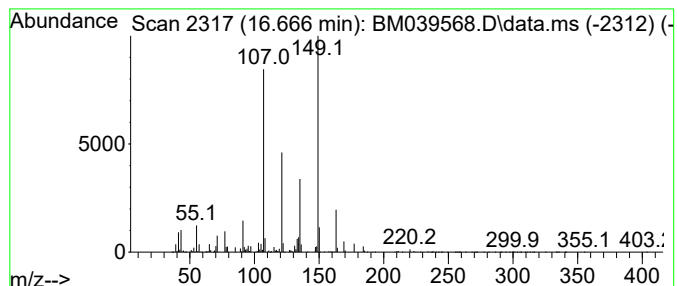
Quant Method : Z:\svoasrv\HPCHEM1\BNA_M\Methods\8270-BM041723.M
 Quant Title : ASP BNA STANDARDS FOR 5 POINT CALIBRATION

TIC Library : C:\Database\NIST20.L
 TIC Integration Parameters: LSCINT.P

 Peak Number 16 5H-Pyrrolo(3,2-d)pyrimidine... Concentration Rank 9

R.T.	EstConc	Area	Relative to ISTD	R.T.
16.666	66.41 ng	12847400	Phenanthrene-d10	17.260

Hit#	of 5	Tentative ID	MW	MolForm	CAS#	Qual
1		5H-Pyrrolo(3,2-d)pyrimidine-2,4-...	149	C6H7N5	1000244-21-4	59
2		Acetamide, N-(3-methylphenyl)-	149	C9H11NO	000537-92-8	58
3		Phenol, 4-(2-methylpropyl)-	150	C10H14O	004167-74-2	30
4		Phthalic acid, but-3-yn-2-yl 2-p...	288	C17H20O4	1000315-75-5	27
5		4-Isopropoxy-4-phenylbutyronitrile	203	C13H17NO	1010370-35-3	27



Data Path : Z:\svoasrv\HPCHEM1\BNA_M\Data\BM042123\
 Data File : BM039568.D
 Acq On : 22 Apr 2023 01:18
 Operator : CG/JU
 Sample : 02386-15
 Misc :
 ALS Vial : 16 Sample Multiplier: 1

Instrument :
 BNA_M
 ClientSampleId :
 SPA-4WC-23-04

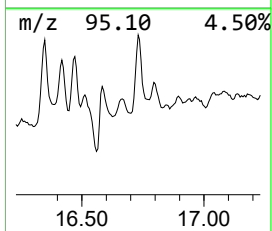
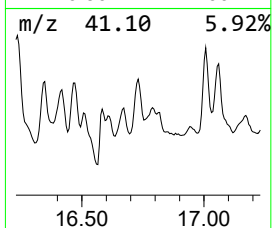
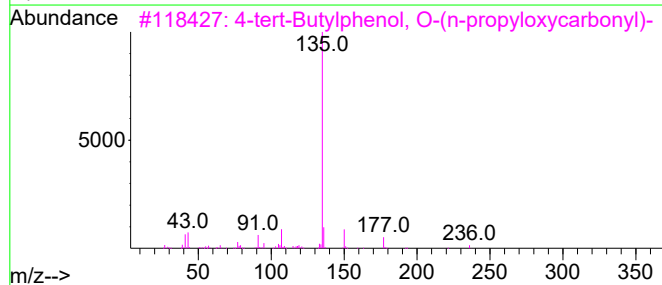
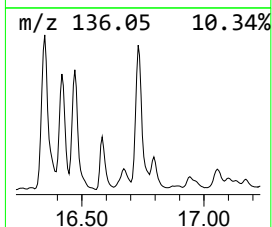
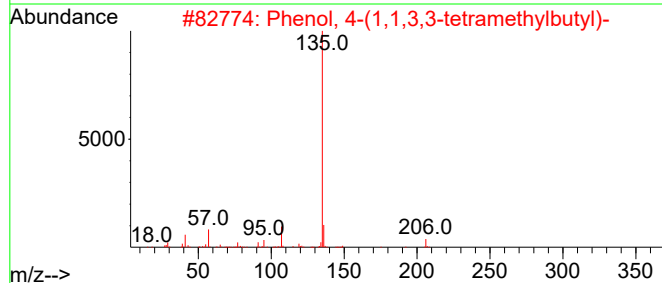
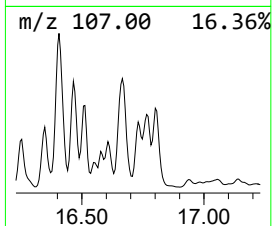
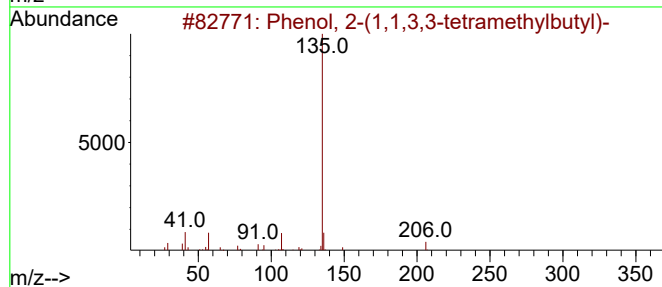
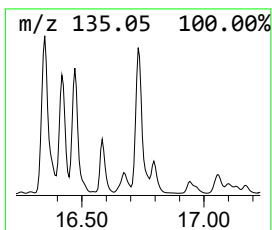
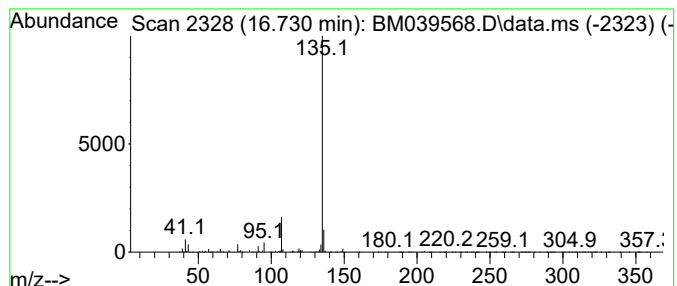
Quant Method : Z:\svoasrv\HPCHEM1\BNA_M\Methods\8270-BM041723.M
 Quant Title : ASP BNA STANDARDS FOR 5 POINT CALIBRATION

TIC Library : C:\Database\NIST20.L
 TIC Integration Parameters: LSCINT.P

 Peak Number 17 Phenol, 2-(1,1,3,3-tetramet... Concentration Rank 6

R.T.	EstConc	Area	Relative to ISTD	R.T.
16.730	70.96 ng	13727600	Phenanthrene-d10	17.260

Hit#	of 5	Tentative ID	MW	MolForm	CAS#	Qual
1		Phenol, 2-(1,1,3,3-tetramethylbu...	206	C14H22O	003884-95-5	78
2		Phenol, 4-(1,1,3,3-tetramethylbu...	206	C14H22O	000140-66-9	78
3		4-tert-Butylphenol, O-(n-propylo...	236	C14H20O3	1000487-25-4	64
4		Benzamide, 2-methoxy-N-(2-phenyl...	479	C32H49N2O2	1000451-47-2	59
5		1-Adamantanecarboxylic acid, 3,4...	324	C17H18Cl2O2	1000307-66-4	50



Data Path : Z:\svoasrv\HPCHEM1\BNA_M\Data\BM042123\
 Data File : BM039568.D
 Acq On : 22 Apr 2023 01:18
 Operator : CG/JU
 Sample : 02386-15
 Misc :
 ALS Vial : 16 Sample Multiplier: 1

Instrument :
 BNA_M
 ClientSampleId :
 SPA-4WC-23-04

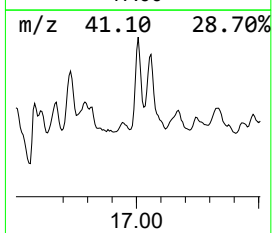
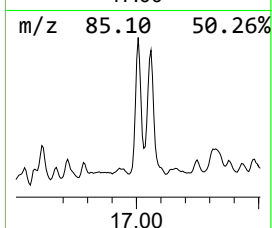
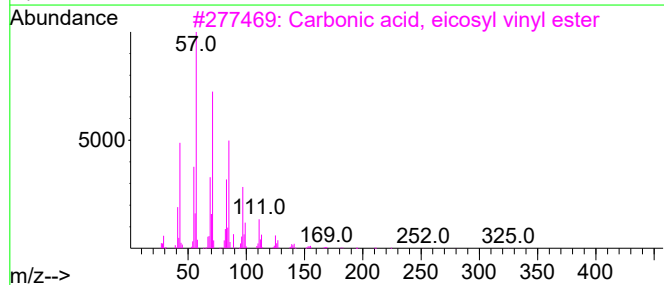
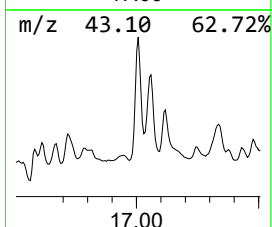
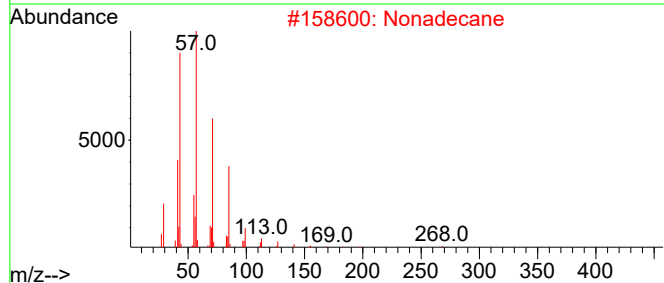
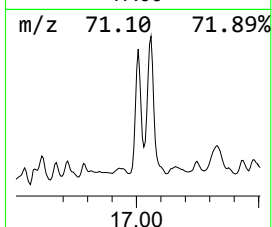
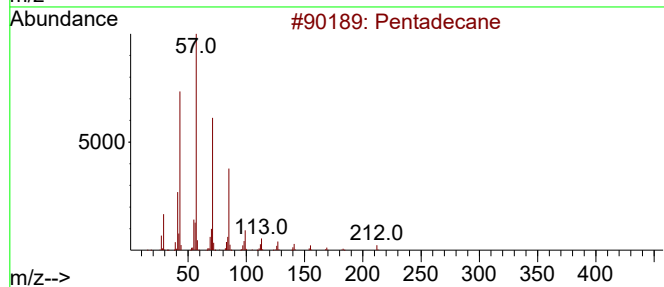
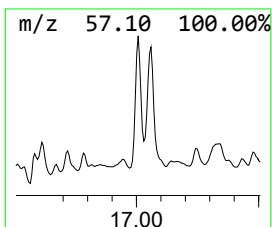
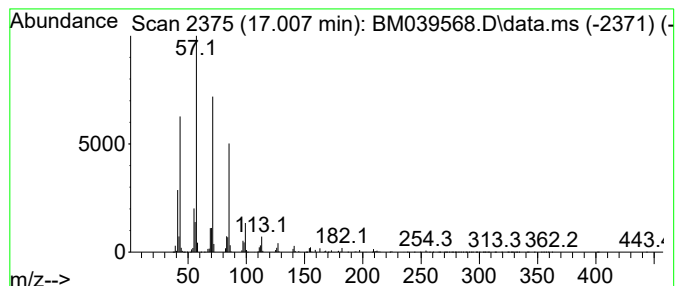
Quant Method : Z:\svoasrv\HPCHEM1\BNA_M\Methods\8270-BM041723.M
 Quant Title : ASP BNA STANDARDS FOR 5 POINT CALIBRATION

TIC Library : C:\Database\NIST20.L
 TIC Integration Parameters: LSCINT.P

 Peak Number 18 Nonadecane Concentration Rank 13

R.T.	EstConc	Area	Relative to ISTD	R.T.
17.007	50.84 ng	9834910	Phenanthrene-d10	17.260

Hit#	of 5	Tentative ID	MW	MolForm	CAS#	Qual
1		Pentadecane	212	C15H32	000629-62-9	95
2		Nonadecane	268	C19H40	000629-92-5	91
3		Carbonic acid, eicosyl vinyl ester	368	C23H44O3	1000382-54-3	91
4		Heneicosane	296	C21H44	000629-94-7	91
5		Heptadecane	240	C17H36	000629-78-7	91



Data Path : Z:\svoasrv\HPCHEM1\BNA_M\Data\BM042123\
 Data File : BM039568.D
 Acq On : 22 Apr 2023 01:18
 Operator : CG/JU
 Sample : 02386-15
 Misc :
 ALS Vial : 16 Sample Multiplier: 1

Instrument :
 BNA_M
 ClientSampleId :
 SPA-4WC-23-04

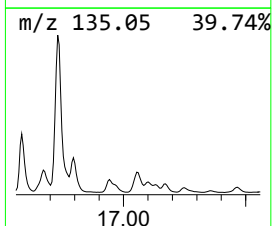
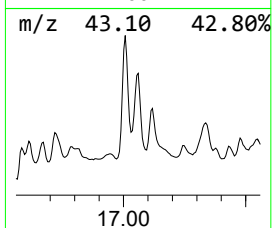
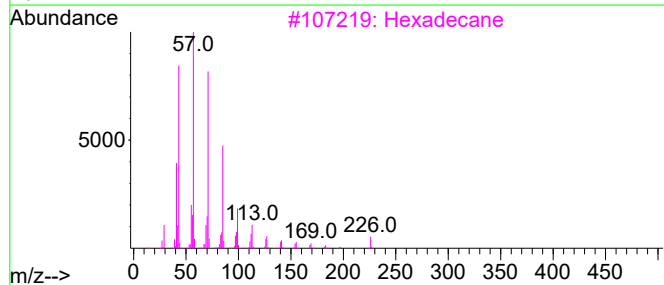
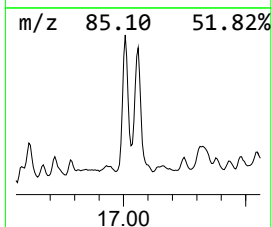
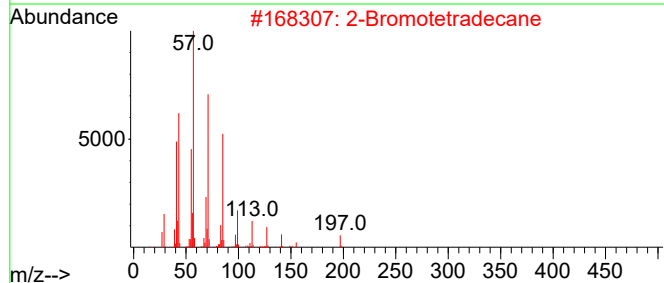
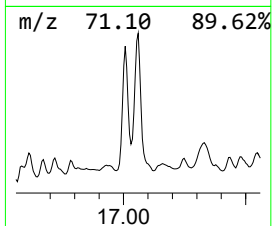
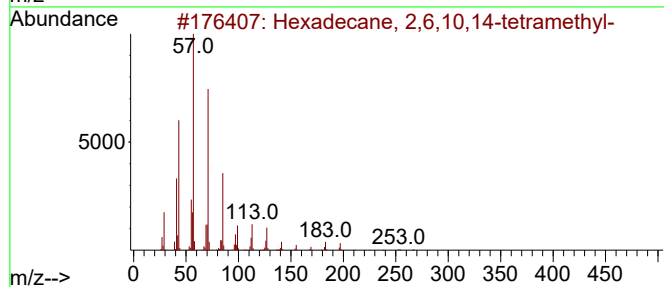
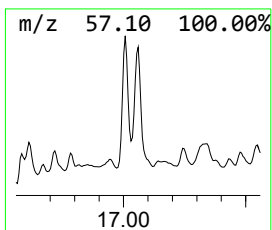
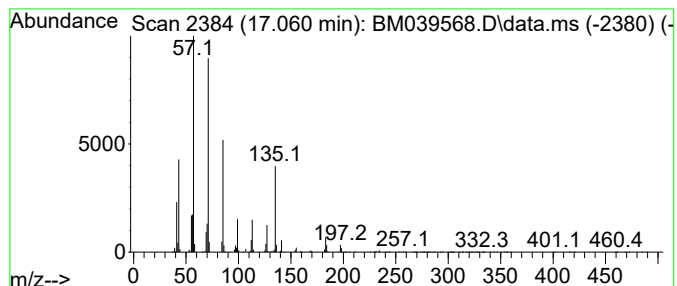
Quant Method : Z:\svoasrv\HPCHEM1\BNA_M\Methods\8270-BM041723.M
 Quant Title : ASP BNA STANDARDS FOR 5 POINT CALIBRATION

TIC Library : C:\Database\NIST20.L
 TIC Integration Parameters: LSCINT.P

 Peak Number 19 Hexadecane, 2,6,10,14-tetra... Concentration Rank 11

R.T.	EstConc	Area	Relative to ISTD	R.T.
17.060	59.87 ng	11583400	Phenanthrene-d10	17.260

Hit#	of 5	Tentative ID	MW	MolForm	CAS#	Qual
1		Hexadecane, 2,6,10,14-tetramethyl-	282	C20H42	000638-36-8	72
2		2-Bromotetradecane	276	C14H29Br	074036-95-6	64
3		Hexadecane	226	C16H34	000544-76-3	64
4		Tridecane	184	C13H28	000629-50-5	64
5		Undecane, 3,8-dimethyl-	184	C13H28	017301-30-3	59



Data Path : Z:\svoasrv\HPCHEM1\BNA_M\Data\BM042123\
 Data File : BM039568.D
 Acq On : 22 Apr 2023 01:18
 Operator : CG/JU
 Sample : 02386-15
 Misc :
 ALS Vial : 16 Sample Multiplier: 1

Instrument :
 BNA_M
 ClientSampleId :
 SPA-4WC-23-04

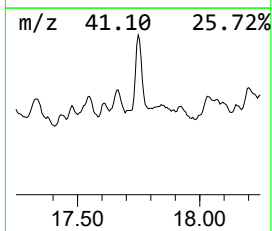
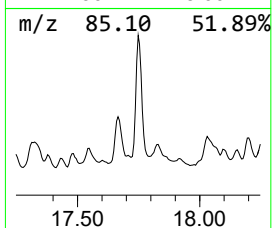
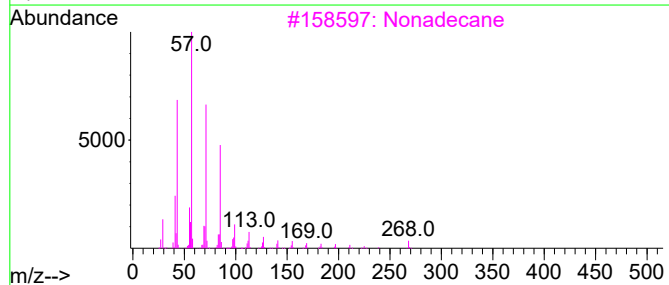
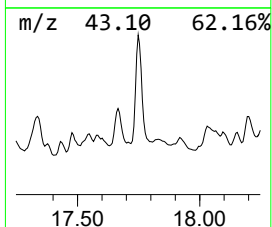
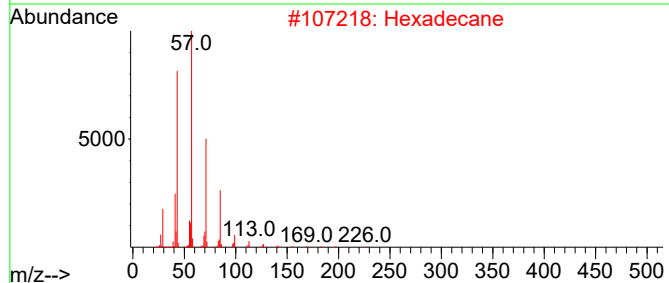
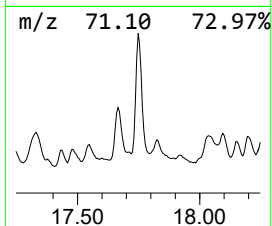
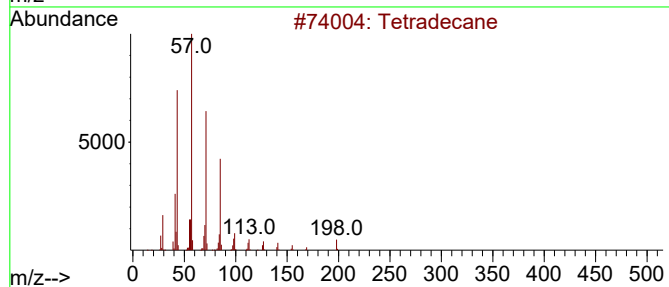
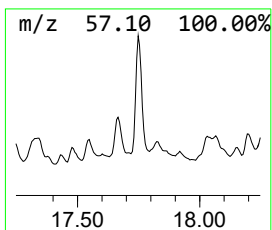
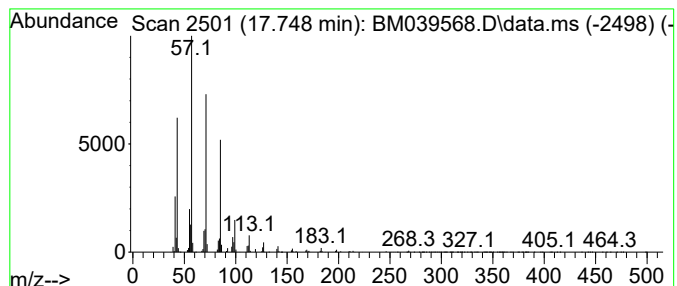
Quant Method : Z:\svoasrv\HPCHEM1\BNA_M\Methods\8270-BM041723.M
 Quant Title : ASP BNA STANDARDS FOR 5 POINT CALIBRATION

TIC Library : C:\Database\NIST20.L
 TIC Integration Parameters: LSCINT.P

 Peak Number 20 Hexadecane Concentration Rank 14

R.T.	EstConc	Area	Relative to ISTD	R.T.
17.748	48.99 ng	9477750	Phenanthrene-d10	17.260

Hit#	of 5	Tentative ID	MW	MolForm	CAS#	Qual
1		Tetradecane	198	C14H30	000629-59-4	94
2		Hexadecane	226	C16H34	000544-76-3	90
3		Nonadecane	268	C19H40	000629-92-5	90
4		Tetradecane, 1-iodo-	324	C14H29I	019218-94-1	87
5		Heptadecane	240	C17H36	000629-78-7	87



Data Path : Z:\svoasrv\HPCHEM1\BNA_M\Data\BM042123\
 Data File : BM039568.D
 Acq On : 22 Apr 2023 01:18
 Operator : CG/JU
 Sample : 02386-15
 Misc :
 ALS Vial : 16 Sample Multiplier: 1

Instrument :
 BNA_M
ClientSampleId :
 SPA-4WC-23-04

Quant Method : Z:\svoasrv\HPCHEM1\BNA_M\Methods\8270-BM041723.M
 Quant Title : ASP BNA STANDARDS FOR 5 POINT CALIBRATION

TIC Library : C:\Database\NIST0.L
 TIC Integration Parameters: LSCINT.P

TIC Top Hit name	RT	EstConc	Units	Response	--Internal Standard--			
					#	RT	Resp	Conc
Tetradecane	7.448	32.5	ng	24831600	1	7.831	15288700	20.0
Undecane	9.066	42.4	ng	32423100	1	7.831	15288700	20.0
Dodecane, 2,6,1...	13.019	33.2	ng	11791500	3	14.495	7110860	20.0
Diphenyl ether	13.554	70.4	ng	25018600	3	14.495	7110860	20.0
Naphthalene, 2,...	13.819	69.1	ng	24561300	3	14.495	7110860	20.0
Naphthalene, 1,...	13.878	39.5	ng	14045500	3	14.495	7110860	20.0
Carbonic acid, ...	13.972	63.2	ng	22467800	3	14.495	7110860	20.0
9-methylheptade...	14.389	52.9	ng	18811300	3	14.495	7110860	20.0
Pentadecane	15.342	32.5	ng	11559100	3	14.495	7110860	20.0
Phenol, 2,4-bis...	16.119	48.9	ng	9454910	4	17.260	3869200	20.0
Tridecane, 5-pr...	16.236	214.5	ng	41490700	4	17.260	3869200	20.0
Carbamic acid, ...	16.348	94.0	ng	18194100	4	17.260	3869200	20.0
4-(7-Methylocty...	16.413	101.5	ng	19637200	4	17.260	3869200	20.0
meso-Hexestrol,...	16.466	82.9	ng	16029300	4	17.260	3869200	20.0
1H-Indene, 2,3-...	16.554	112.2	ng	21702100	4	17.260	3869200	20.0
5H-Pyrrolo(3,2-...	16.666	66.4	ng	12847400	4	17.260	3869200	20.0
Phenol, 2-(1,1,...	16.730	71.0	ng	13727600	4	17.260	3869200	20.0
Nonadecane	17.007	50.8	ng	9834910	4	17.260	3869200	20.0
Hexadecane, 2,6...	17.060	59.9	ng	11583400	4	17.260	3869200	20.0
Hexadecane	17.748	49.0	ng	9477750	4	17.260	3869200	20.0