

Data Path : Z:\svoasrv\HPCHEM1\BNA_M\Data\BM042421\
 Data File : BM029636.D
 Acq On : 24 Apr 2021 14:18
 Operator : CG/JU
 Sample : M2149-09
 Misc :
 ALS Vial : 8 Sample Multiplier: 1

Instrument :
 BNA_M
 ClientSampleId :
 SB-38-9.5-10.0

Quant Time: Apr 26 03:06:22 2021
 Quant Method : Z:\svoasrv\HPCHEM1\BNA_M\Methods\8270-BM042121.M
 Quant Title : ASP BNA STANDARDS FOR 5 POINT CALIBRATION
 QLast Update : Thu Apr 22 15:55:11 2021
 Response via : Initial Calibration

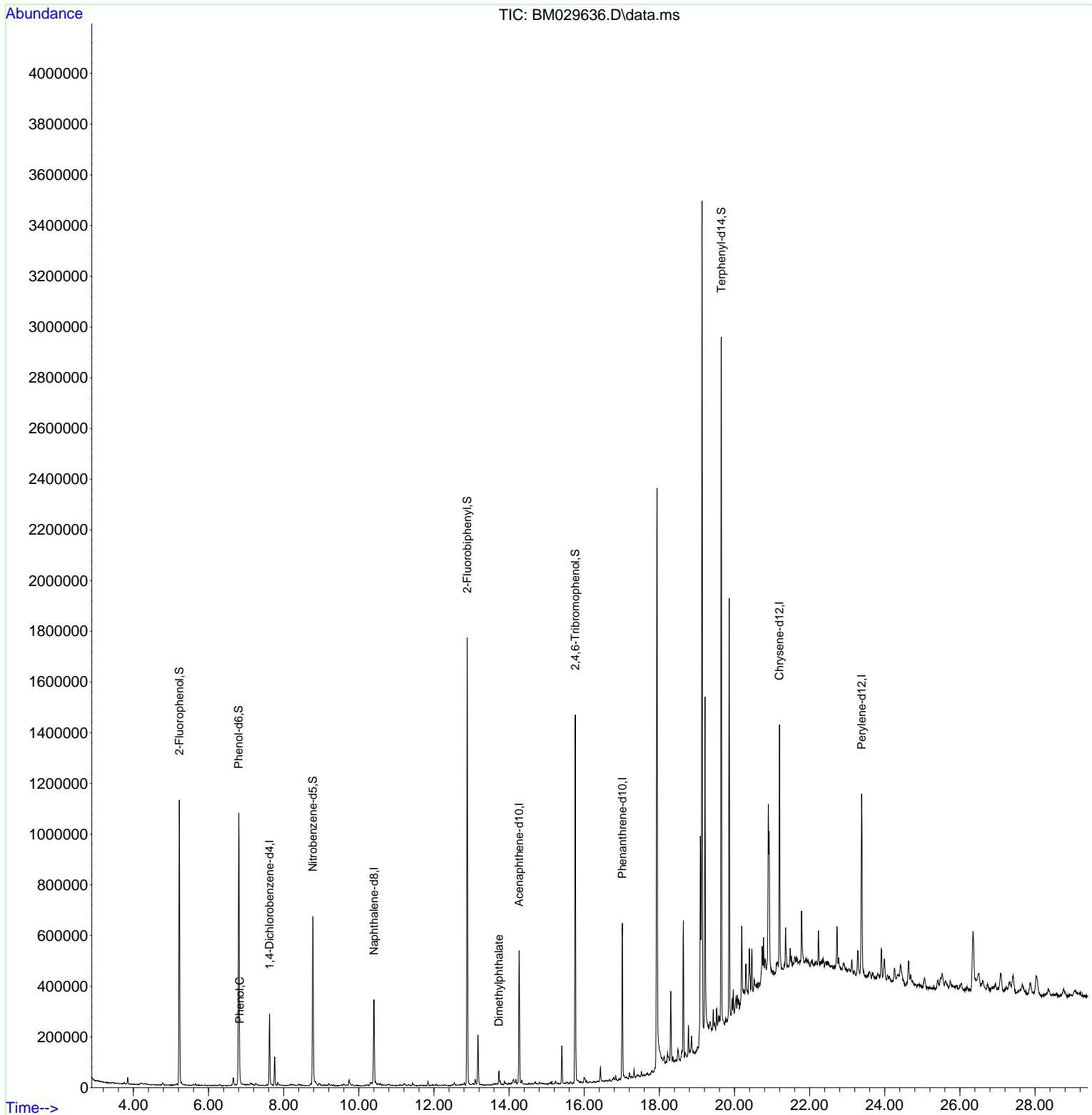
Compound	R.T.	QIon	Response	Conc	Units	Dev(Min)	
Internal Standards							
1) 1,4-Dichlorobenzene-d4	7.622	152	75744	20.00	ng	-0.01	
21) Naphthalene-d8	10.404	136	266520	20.00	ng	-0.01	
39) Acenaphthene-d10	14.269	164	169049	20.00	ng	-0.01	
64) Phenanthrene-d10	17.015	188	362158	20.00	ng	0.00	
76) Chrysene-d12	21.197	240	423136	20.00	ng	0.00	
86) Perylene-d12	23.386	264	465049	20.00	ng	0.00	
System Monitoring Compounds							
5) 2-Fluorophenol	5.222	112	433943	114.86	ng	0.00	
7) Phenol-d6	6.804	99	549688	97.41	ng	0.00	
23) Nitrobenzene-d5	8.775	82	389544	75.28	ng	-0.01	
42) 2,4,6-Tribromophenol	15.763	330	251046	107.38	ng	0.00	
45) 2-Fluorobiphenyl	12.886	172	898484	72.14	ng	-0.01	
79) Terphenyl-d14	19.651	244	1187426	53.20	ng	0.00	
Target Compounds							Qvalue
10) Phenol	6.834	94	14391	2.63	ng		94
50) Dimethylphthalate	13.733	163	34651	2.71	ng		99

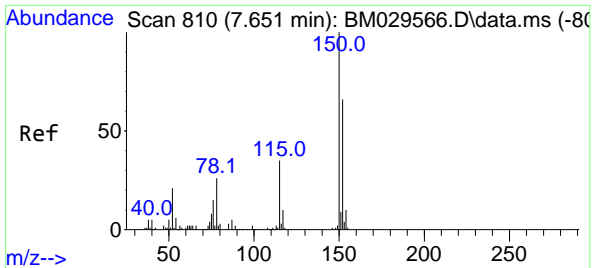
(#) = qualifier out of range (m) = manual integration (+) = signals summed

Data Path : Z:\svoasrv\HPCHEM1\BNA_M\Data\BM042421\
 Data File : BM029636.D
 Acq On : 24 Apr 2021 14:18
 Operator : CG/JU
 Sample : M2149-09
 Misc :
 ALS Vial : 8 Sample Multiplier: 1

Instrument :
 BNA_M
 ClientSampleId :
 SB-38-9.5-10.0

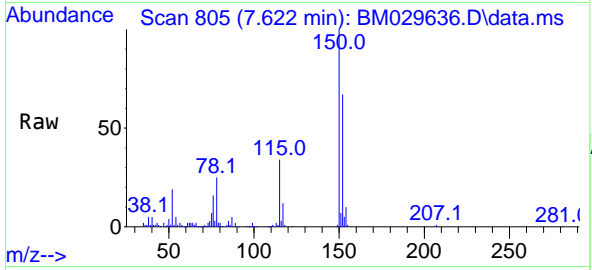
Quant Time: Apr 26 03:06:22 2021
 Quant Method : Z:\svoasrv\HPCHEM1\BNA_M\Methods\8270-BM042121.M
 Quant Title : ASP BNA STANDARDS FOR 5 POINT CALIBRATION
 QLast Update : Thu Apr 22 15:55:11 2021
 Response via : Initial Calibration



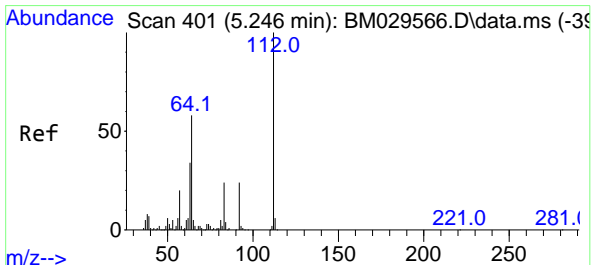
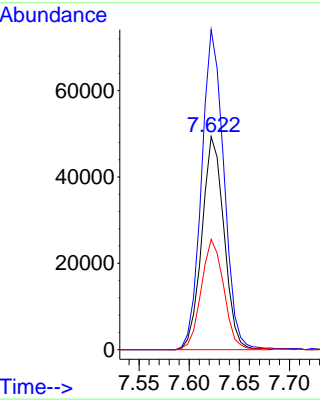
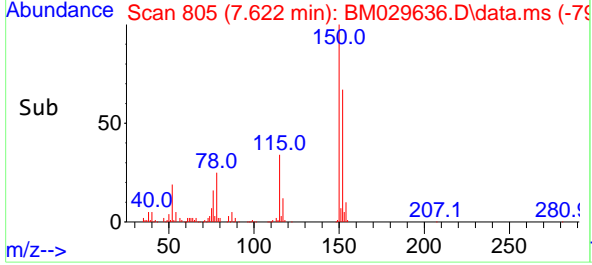


#1
 1,4-Dichlorobenzene-d4
 Concen: 20.00 ng
 RT: 7.622 min Scan# 805
 Delta R.T. -0.012 min
 Lab File: BM029636.D
 Acq: 24 Apr 2021 14:18

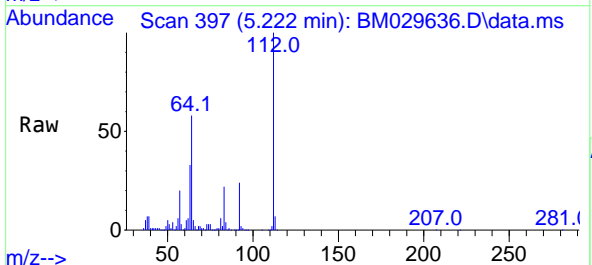
Instrument :
 BNA_M
 ClientSampled :
 SB-38-9.5-10.0



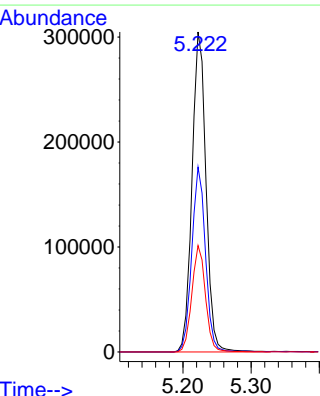
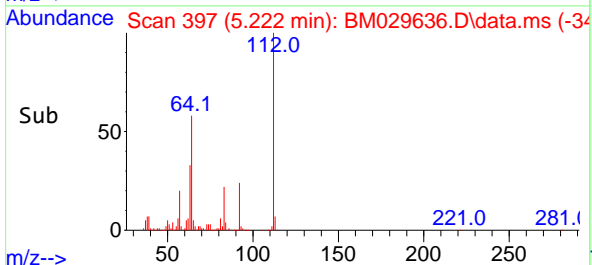
Tgt Ion:152 Resp: 75744
 Ion Ratio Lower Upper
 152 100
 150 150.2 125.9 188.9
 115 51.7 44.6 67.0

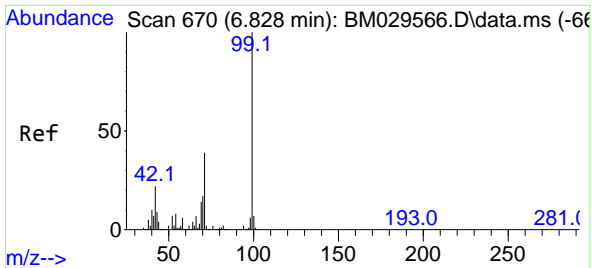


#5
 2-Fluorophenol
 Concen: 114.86 ng
 RT: 5.222 min Scan# 397
 Delta R.T. -0.006 min
 Lab File: BM029636.D
 Acq: 24 Apr 2021 14:18



Tgt Ion:112 Resp: 433943
 Ion Ratio Lower Upper
 112 100
 64 57.7 47.1 70.7
 63 33.2 27.3 40.9



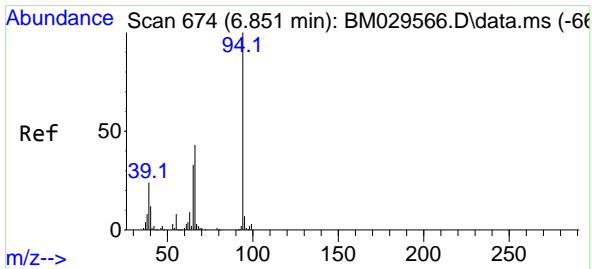
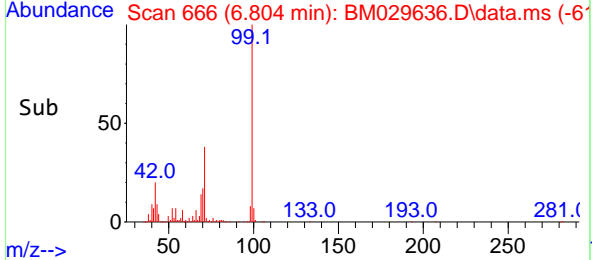
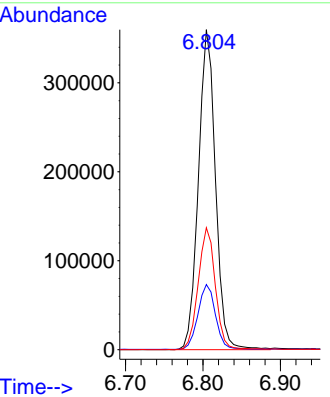
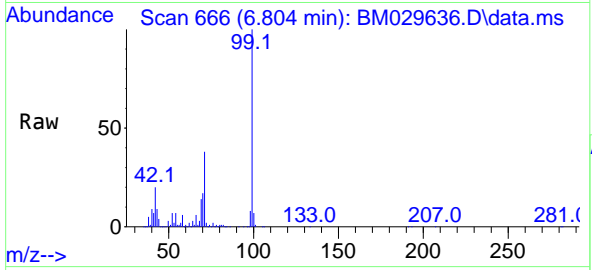


#7
 Phenol-d6
 Concen: 97.41 ng
 RT: 6.804 min Scan# 666
 Delta R.T. -0.006 min
 Lab File: BM029636.D
 Acq: 24 Apr 2021 14:18

Instrument :
 BNA_M
 ClientSampleId :
 SB-38-9.5-10.0

Tgt Ion: 99 Resp: 549688

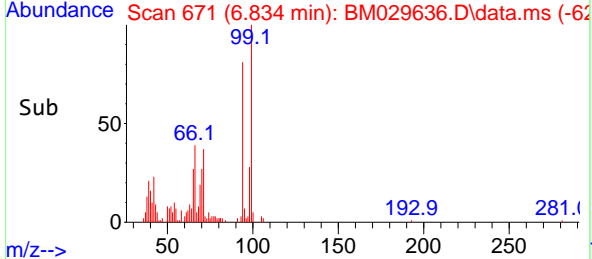
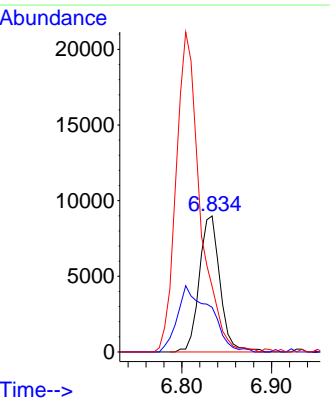
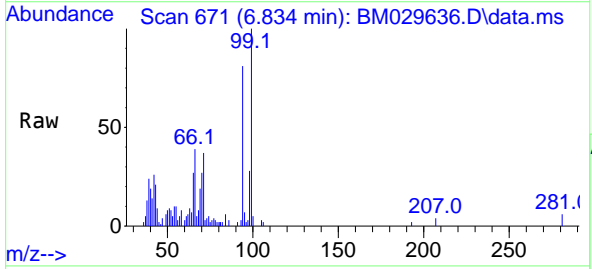
Ion	Ratio	Lower	Upper
99	100		
42	20.3	18.0	27.0
71	38.1	30.9	46.3

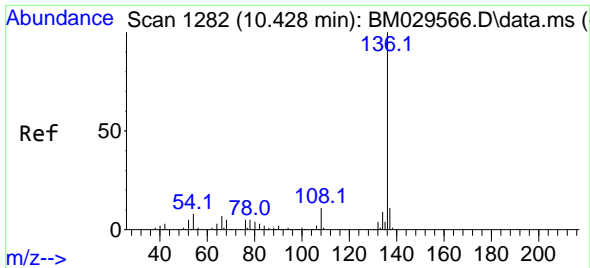


#10
 Phenol
 Concen: 2.63 ng
 RT: 6.834 min Scan# 671
 Delta R.T. -0.006 min
 Lab File: BM029636.D
 Acq: 24 Apr 2021 14:18

Tgt Ion: 94 Resp: 14391

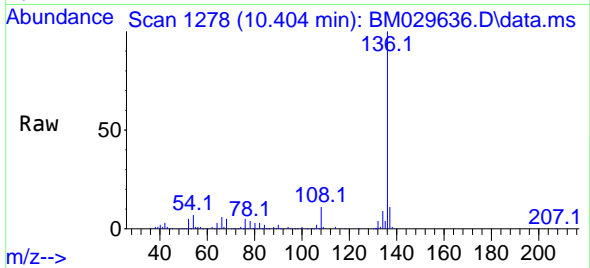
Ion	Ratio	Lower	Upper
94	100		
65	32.8	11.9	51.9
66	48.1	22.6	62.6





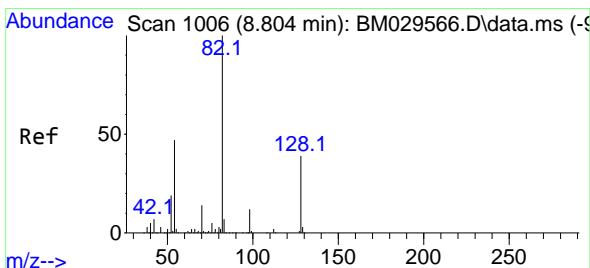
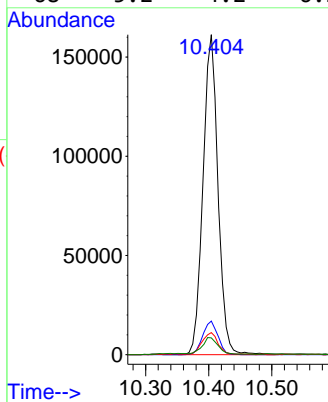
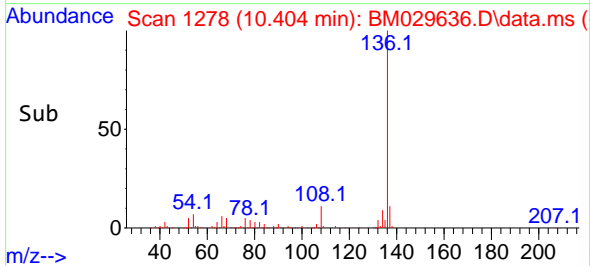
#21
 Naphthalene-d8
 Concen: 20.00 ng
 RT: 10.404 min Scan# 1278
 Delta R.T. -0.012 min
 Lab File: BM029636.D
 Acq: 24 Apr 2021 14:18

Instrument :
 BNA_M
 ClientSampleId :
 SB-38-9.5-10.0

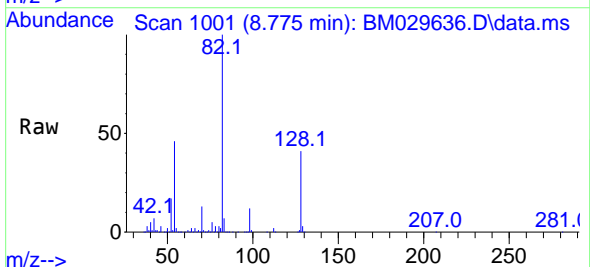


Tgt Ion:136 Resp: 266520

Ion	Ratio	Lower	Upper
136	100		
137	10.5	8.4	12.6
54	6.9	5.5	8.3
68	5.2	4.2	6.2

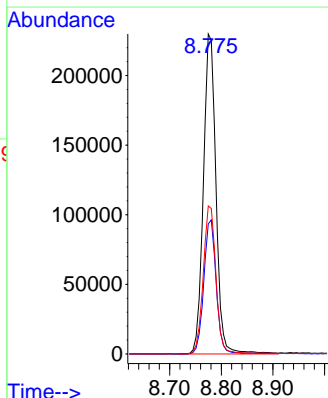
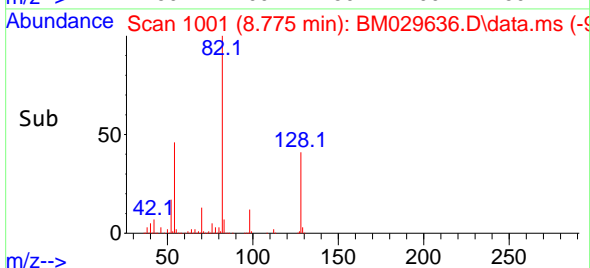


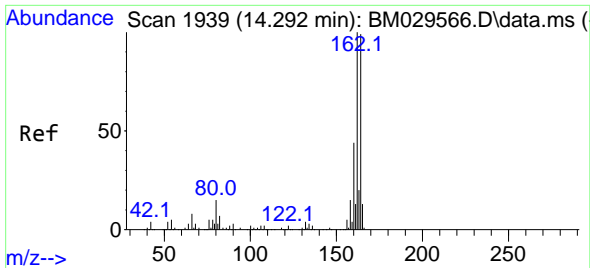
#23
 Nitrobenzene-d5
 Concen: 75.28 ng
 RT: 8.775 min Scan# 1001
 Delta R.T. -0.012 min
 Lab File: BM029636.D
 Acq: 24 Apr 2021 14:18



Tgt Ion: 82 Resp: 389544

Ion	Ratio	Lower	Upper
82	100		
128	40.6	31.1	46.7
54	46.2	37.3	55.9



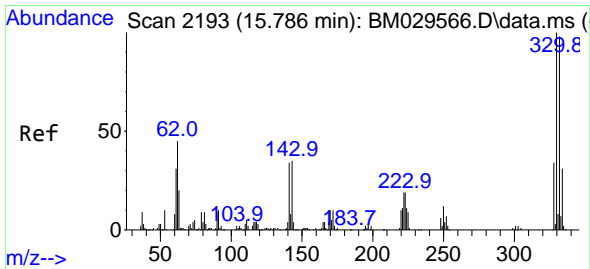
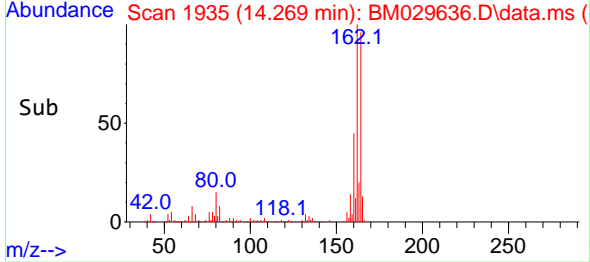
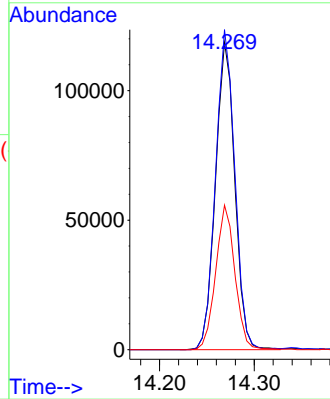
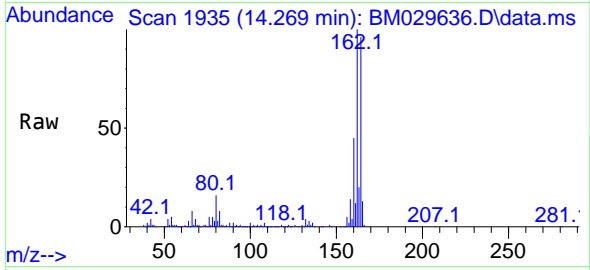


#39
 Acenaphthene-d10
 Concen: 20.00 ng
 RT: 14.269 min Scan# 1935
 Delta R.T. -0.012 min
 Lab File: BM029636.D
 Acq: 24 Apr 2021 14:18

Instrument :
 BNA_M
 ClientSampleId :
 SB-38-9.5-10.0

Tgt Ion:164 Resp: 169049

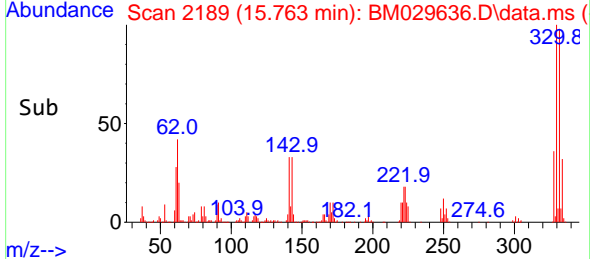
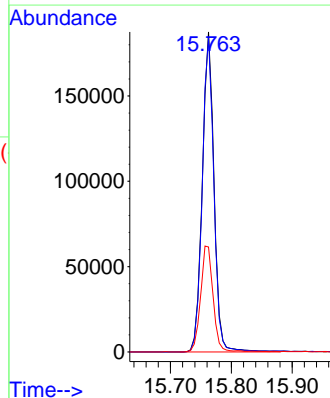
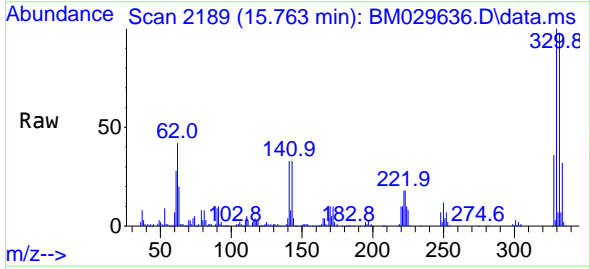
Ion	Ratio	Lower	Upper
164	100		
162	104.1	83.4	125.0
160	47.0	37.2	55.8

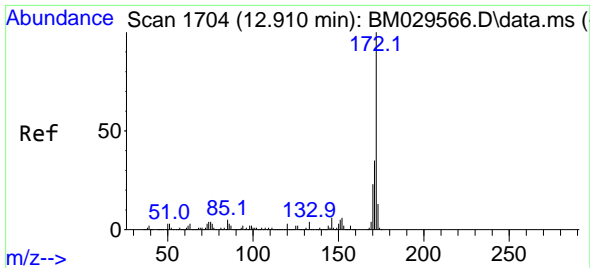


#42
 2,4,6-Tribromophenol
 Concen: 107.38 ng
 RT: 15.763 min Scan# 2189
 Delta R.T. -0.006 min
 Lab File: BM029636.D
 Acq: 24 Apr 2021 14:18

Tgt Ion:330 Resp: 251046

Ion	Ratio	Lower	Upper
330	100		
332	97.4	77.0	115.4
141	35.5	30.2	45.2



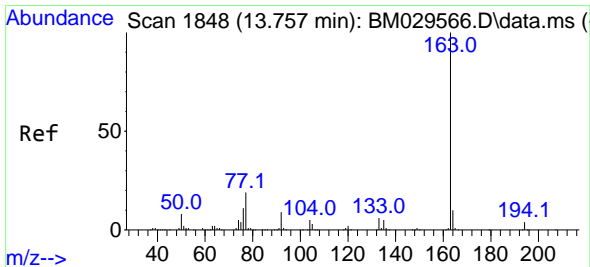
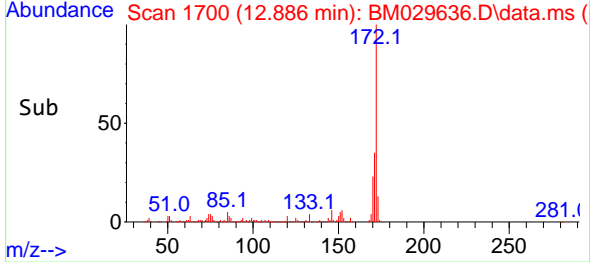
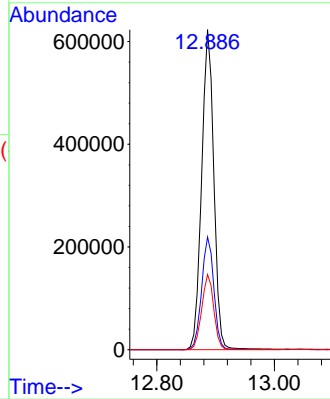
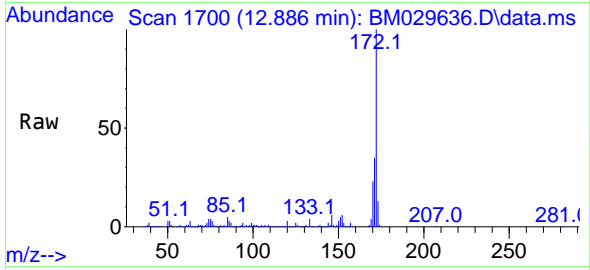


#45
 2-Fluorobiphenyl
 Concen: 72.14 ng
 RT: 12.886 min Scan# 1700
 Delta R.T. -0.012 min
 Lab File: BM029636.D
 Acq: 24 Apr 2021 14:18

Instrument :
 BNA_M
 ClientSampled :
 SB-38-9.5-10.0

Tgt Ion:172 Resp: 898484

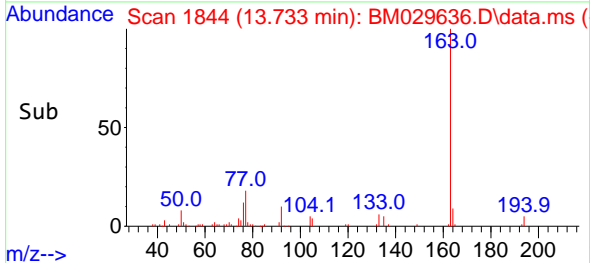
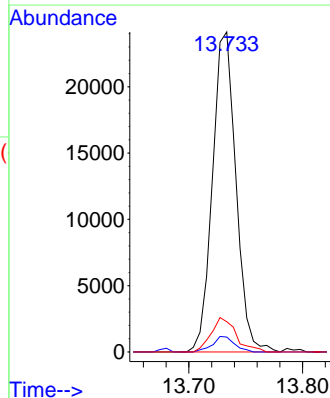
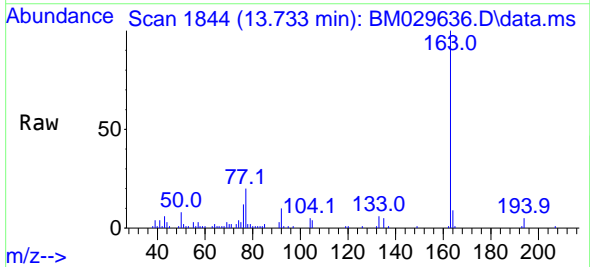
Ion	Ratio	Lower	Upper
172	100		
171	35.2	28.6	43.0
170	23.5	18.4	27.6

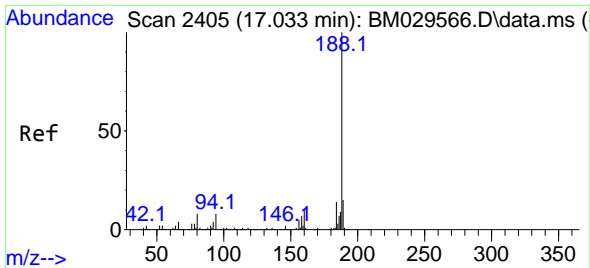


#50
 Dimethylphthalate
 Concen: 2.71 ng
 RT: 13.733 min Scan# 1844
 Delta R.T. -0.012 min
 Lab File: BM029636.D
 Acq: 24 Apr 2021 14:18

Tgt Ion:163 Resp: 34651

Ion	Ratio	Lower	Upper
163	100		
194	4.7	3.3	4.9
164	9.4	7.9	11.9



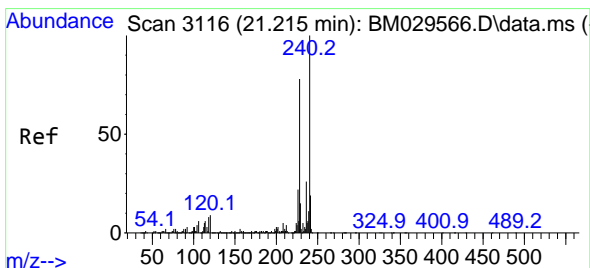
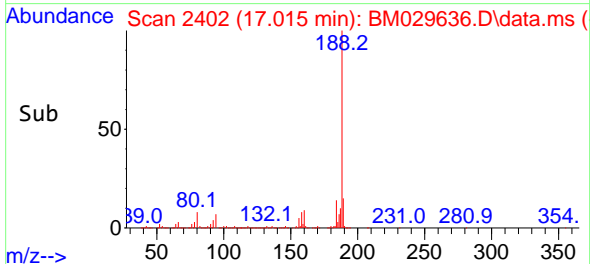
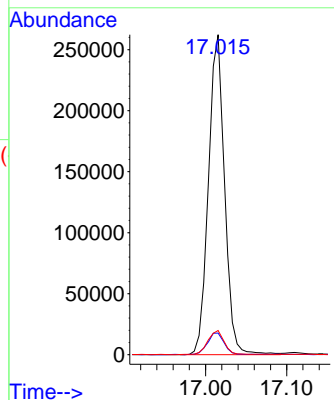
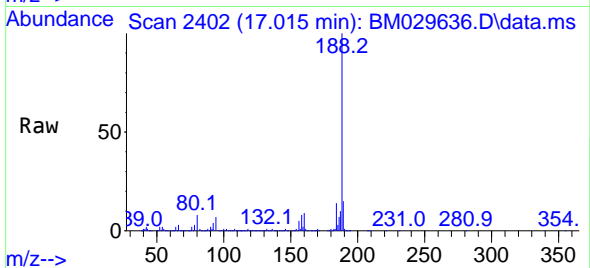


#64
 Phenanthrene-d10
 Concen: 20.00 ng
 RT: 17.015 min Scan# 2402
 Delta R.T. -0.006 min
 Lab File: BM029636.D
 Acq: 24 Apr 2021 14:18

Instrument :
 BNA_M
 ClientSampled :
 SB-38-9.5-10.0

Tgt Ion:188 Resp: 362158

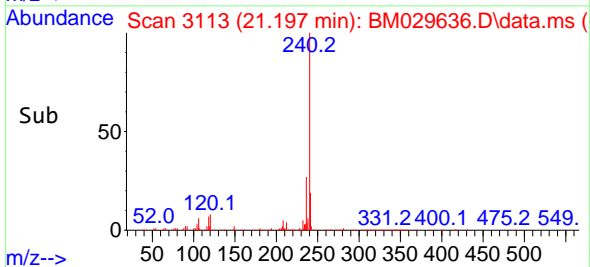
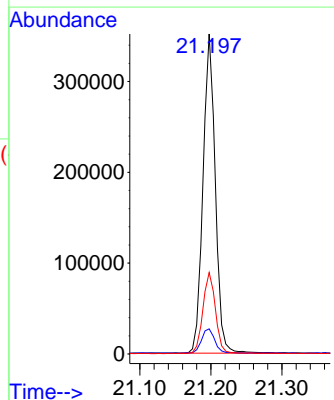
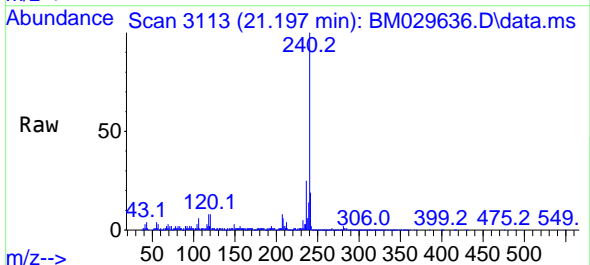
Ion	Ratio	Lower	Upper
188	100		
94	6.8	6.0	9.0
80	7.5	6.6	9.8

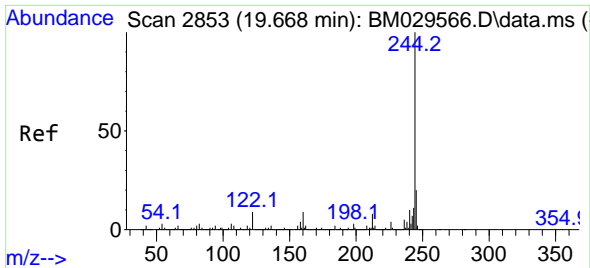


#76
 Chrysene-d12
 Concen: 20.00 ng
 RT: 21.197 min Scan# 3113
 Delta R.T. -0.006 min
 Lab File: BM029636.D
 Acq: 24 Apr 2021 14:18

Tgt Ion:240 Resp: 423136

Ion	Ratio	Lower	Upper
240	100		
120	7.8	7.0	10.6
236	25.4	21.0	31.4

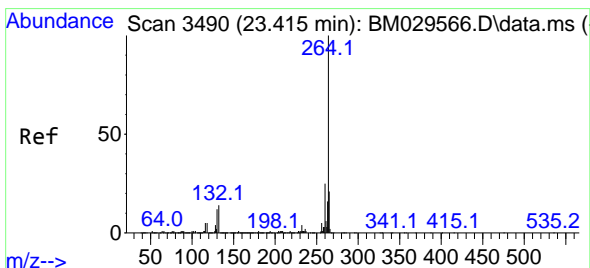
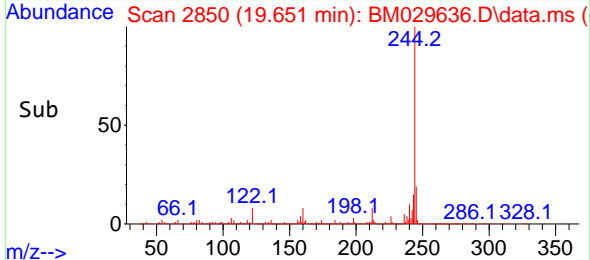
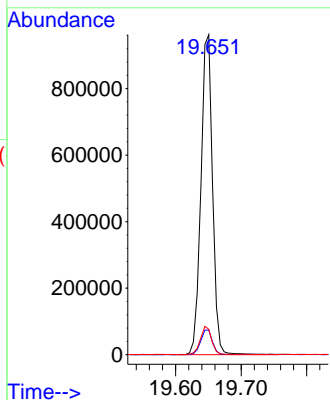
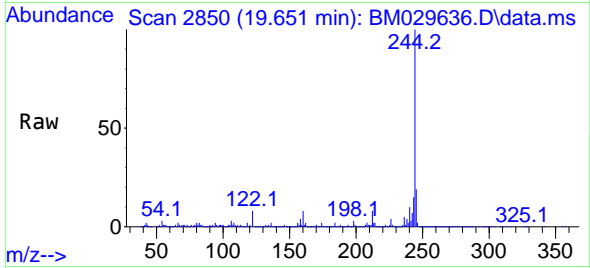




#79
 Terphenyl-d14
 Concen: 53.20 ng
 RT: 19.651 min Scan# 2850
 Delta R.T. -0.006 min
 Lab File: BM029636.D
 Acq: 24 Apr 2021 14:18

Instrument :
 BNA_M
 ClientSampleId :
 SB-38-9.5-10.0

Tgt Ion:244 Resp: 1187426
 Ion Ratio Lower Upper
 244 100
 212 7.6 6.3 9.5
 122 7.9 6.9 10.3



#86
 Perylene-d12
 Concen: 20.00 ng
 RT: 23.386 min Scan# 3485
 Delta R.T. -0.006 min
 Lab File: BM029636.D
 Acq: 24 Apr 2021 14:18

Tgt Ion:264 Resp: 465049
 Ion Ratio Lower Upper
 264 100
 260 24.0 19.8 29.8
 265 21.6 17.7 26.5

