

Data Path : Z:\svoasrv\HPCHEM1\BNA\_M\Data\BM042523\  
 Data File : BM039647.D  
 Acq On : 25 Apr 2023 19:05  
 Operator : CG/JU  
 Sample : 02488-01  
 Misc :  
 ALS Vial : 16 Sample Multiplier: 1

Instrument :  
 BNA\_M  
 ClientSampleId :  
 BHE57

Integration Parameters: LSCINT.P

Integrator: RTE  
 Smoothing : OFF Filtering: 5  
 Sampling : 1 Min Area: 0.1 % of largest Peak  
 Start Thrs: 0.2 Max Peaks: 100  
 Stop Thrs : 0 Peak Location: TOP

If leading or trailing edge < 100 prefer < Baseline drop else tangent >  
 Peak separation: 5

Method : Z:\svoasrv\HPCHEM1\BNA\_M\Methods\SFAM-EPA-BM041823.MA.M  
 Title : SVOA CALIBRATION

Signal : TIC: BM039647.D\data.ms

peak #	R.T. min	first scan	max scan	last scan	PK TY	peak height	corr. area	corr. % max.	% of total
1	3.202	25	28	36	rVB	50311	69339	1.01%	0.118%
2	3.643	101	103	117	rBV	104822	219854	3.21%	0.373%
3	3.855	135	139	144	rVB	26318	41994	0.61%	0.071%
4	3.955	153	156	165	rVB4	18397	32771	0.48%	0.056%
5	5.366	393	396	401	rVB	10560	16313	0.24%	0.028%
6	5.496	414	418	424	rBV	15944	23283	0.34%	0.040%
7	7.001	667	674	689	rBV	111902	308257	4.49%	0.523%
8	7.143	692	698	718	rVV	793016	1368049	19.94%	2.322%
9	7.343	726	732	751	rBV	694243	1315786	19.18%	2.233%
10	7.807	804	811	822	rBV	685684	1192492	17.39%	2.024%
11	8.542	930	936	953	rBV	436547	973431	14.19%	1.652%
12	8.731	966	968	973	rVB6	4976	7023	0.10%	0.012%
13	8.978	1003	1010	1033	rBV	885020	1684455	24.56%	2.859%
14	9.154	1035	1040	1042	rVV5	4930	7956	0.12%	0.014%
15	9.366	1072	1076	1081	rVB	15232	22650	0.33%	0.038%
16	9.701	1125	1133	1149	rBV	736211	1431369	20.87%	2.430%
17	10.254	1220	1227	1252	rBV	732612	1786346	26.04%	3.032%
18	10.613	1281	1288	1306	rBV	1039403	1831285	26.70%	3.108%
19	10.772	1308	1315	1341	rBV	367290	968457	14.12%	1.644%
20	11.989	1516	1522	1526	rBV8	9772	21353	0.31%	0.036%
21	12.236	1559	1564	1573	rBV2	10843	26237	0.38%	0.045%
22	12.754	1648	1652	1659	rBV7	5059	10570	0.15%	0.018%
23	13.883	1837	1844	1864	rBV	2346217	3477876	50.70%	5.903%
24	14.160	1884	1891	1910	rBV	2752972	4105654	59.86%	6.969%
25	14.466	1936	1943	1953	rBV	1788432	2600006	37.90%	4.413%
26	14.548	1953	1957	1964	rVB2	28908	48052	0.70%	0.082%
27	14.783	1991	1997	2001	rBV7	16905	42094	0.61%	0.071%
28	14.948	2020	2025	2028	rBV7	5134	8879	0.13%	0.015%
29	15.148	2053	2059	2070	rVV	13297	29331	0.43%	0.050%
30	15.260	2074	2078	2080	rVV3	7161	9846	0.14%	0.017%
31	15.301	2083	2085	2089	rVB4	6087	7316	0.11%	0.012%
32	15.460	2106	2112	2131	rBV	3334550	5138943	74.92%	8.723%
33	15.601	2131	2136	2151	rVV	839051	1522185	22.19%	2.584%
34	15.707	2151	2154	2159	rVB4	19416	32449	0.47%	0.055%
35	15.836	2173	2176	2185	rVB9	11234	25396	0.37%	0.043%
36	16.254	2242	2247	2250	rVB7	4256	7533	0.11%	0.013%

Data Path : Z:\svoasrv\HPCHEM1\BNA\_M\Data\BM042523\  
 Data File : BM039647.D  
 Acq On : 25 Apr 2023 19:05  
 Operator : CG/JU  
 Sample : 02488-01  
 Misc :  
 ALS Vial : 16 Sample Multiplier: 1

Instrument :  
 BNA\_M  
 ClientSampleId :  
 BHE57

Integration Parameters: LSCINT.P  
 Integrator: RTE  
 Smoothing : OFF Filtering: 5  
 Sampling : 1 Min Area: 0.1 % of largest Peak  
 Start Thrs: 0.2 Max Peaks: 100  
 Stop Thrs : 0 Peak Location: TOP

If leading or trailing edge < 100 prefer < Baseline drop else tangent >  
 Peak separation: 5

Method : Z:\svoasrv\HPCHEM1\BNA\_M\Methods\SFAM-EPA-BM041823.MA.M  
 Title : SVOA CALIBRATION

37	16.813	2336	2342	2347	rBV6	8188	13307	0.19%	0.023%
38	17.012	2372	2376	2380	rVB6	5186	8691	0.13%	0.015%
39	17.218	2405	2411	2422	rVV	1974786	2842301	41.44%	4.824%
40	17.318	2422	2428	2447	rVB	3971721	5752244	83.86%	9.764%
41	17.507	2457	2460	2465	rVB7	5222	9097	0.13%	0.015%
42	17.889	2518	2525	2533	rBV	464184	613059	8.94%	1.041%
43	18.124	2560	2565	2572	rBV5	33233	73201	1.07%	0.124%
44	18.989	2707	2712	2718	rBV10	11557	26137	0.38%	0.044%
45	19.183	2741	2745	2753	rBV	44438	70491	1.03%	0.120%
46	19.259	2753	2758	2764	rBV	41096	65088	0.95%	0.110%
47	19.406	2779	2783	2792	rBV5	44410	96137	1.40%	0.163%
48	19.542	2803	2806	2811	rBV6	25165	29498	0.43%	0.050%
49	19.618	2813	2819	2837	rBV	4869263	6859301	100.00%	11.643%
50	21.418	3120	3125	3141	rBV	2000468	2929223	42.70%	4.972%
51	22.500	3305	3309	3320	rBV3	149492	254183	3.71%	0.431%
52	23.624	3493	3500	3517	rBV2	2895755	6097138	88.89%	10.349%
53	23.777	3519	3526	3546	rVB	1227658	2760527	40.25%	4.686%

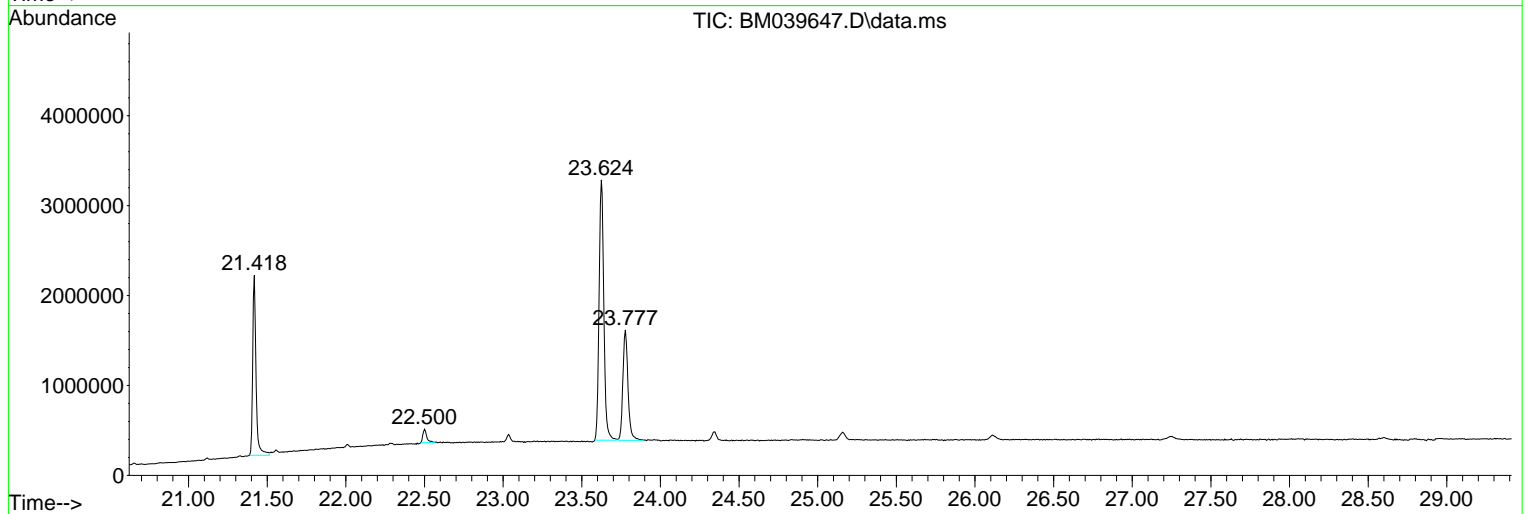
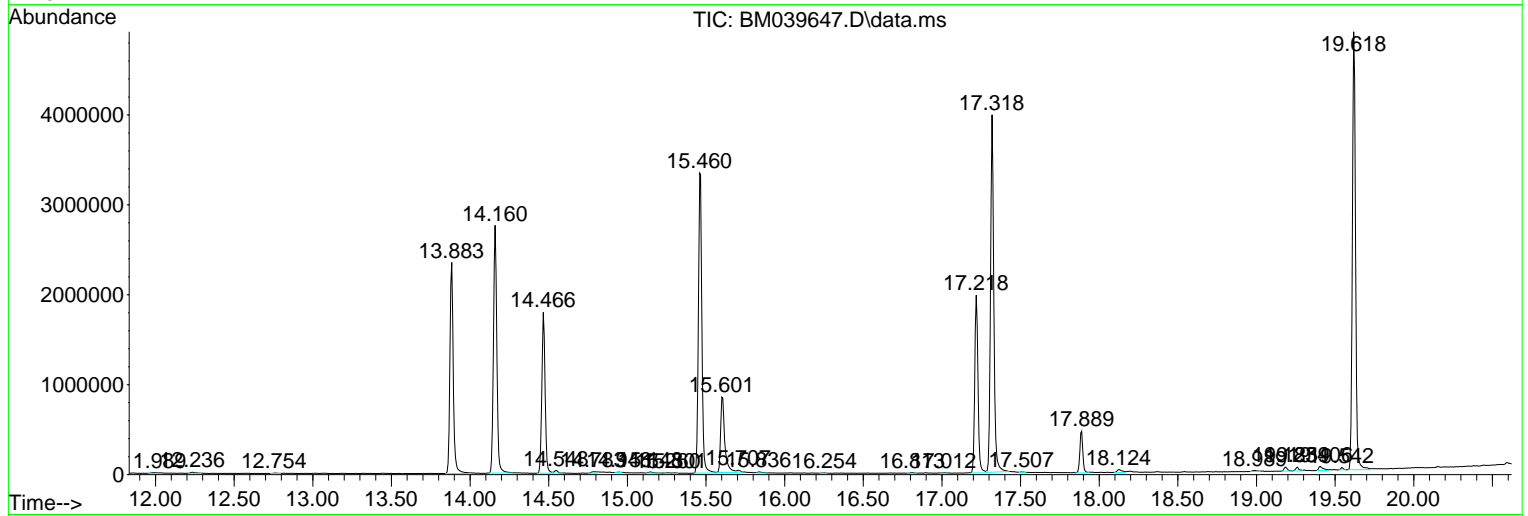
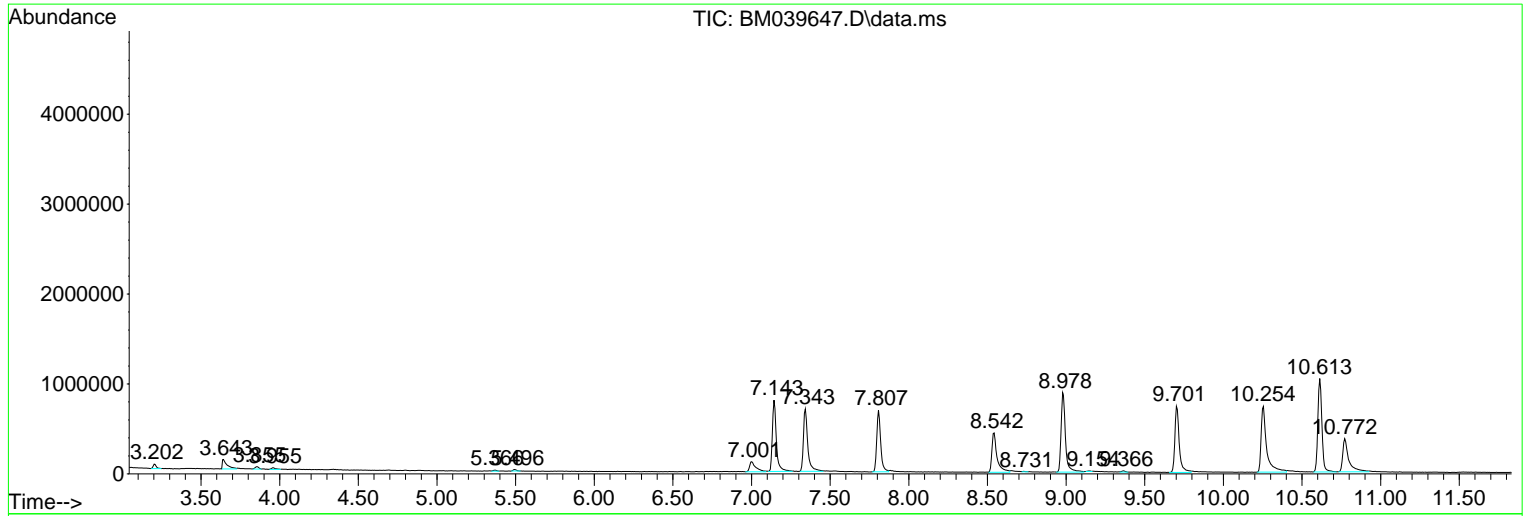
Sum of corrected areas: 58914453

Data Path : Z:\svoasrv\HPCHEM1\BNA\_M\Data\BM042523\  
 Data File : BM039647.D  
 Acq On : 25 Apr 2023 19:05  
 Operator : CG/JU  
 Sample : 02488-01  
 Misc :  
 ALS Vial : 16 Sample Multiplier: 1

**Instrument :**  
 BNA\_M  
**ClientSampleId :**  
 BHE57

Quant Method : Z:\svoasrv\HPCHEM1\BNA\_M\Methods\SFAM-EPA-BM041823.MA.M  
 Quant Title : SVOA CALIBRATION

TIC Library : C:\Database\NIST20.L  
 TIC Integration Parameters: LSCINT.P



Data Path : Z:\svoasrv\HPCHEM1\BNA\_M\Data\BM042523\  
 Data File : BM039647.D  
 Acq On : 25 Apr 2023 19:05  
 Operator : CG/JU  
 Sample : 02488-01  
 Misc :  
 ALS Vial : 16 Sample Multiplier: 1

Instrument :  
 BNA\_M  
 ClientSampleId :  
 BHE57

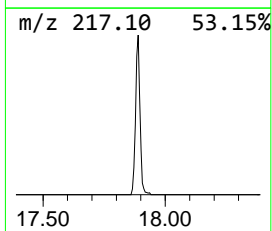
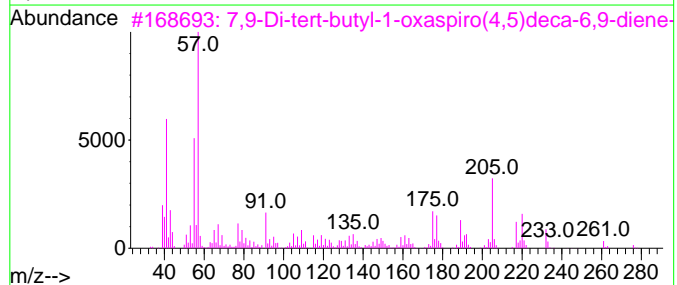
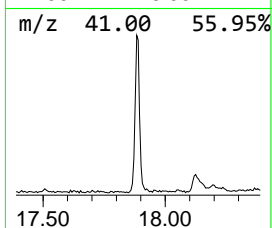
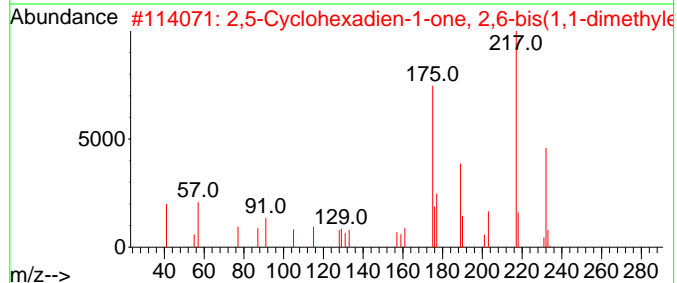
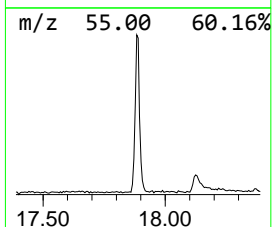
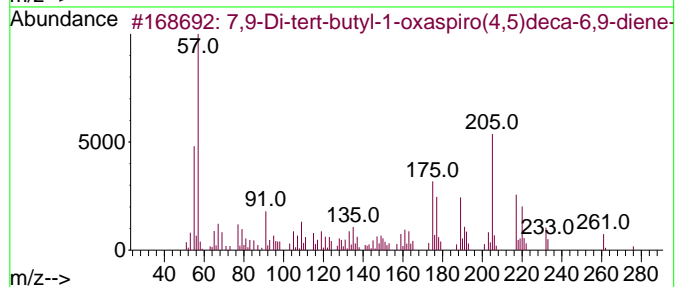
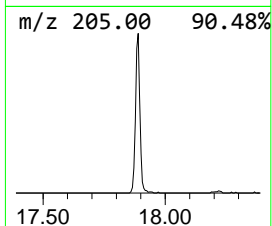
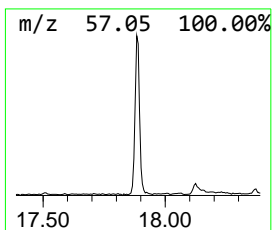
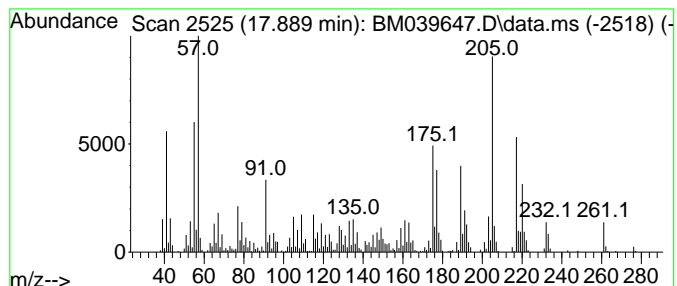
Quant Method : Z:\svoasrv\HPCHEM1\BNA\_M\Methods\SFAM-EPA-BM041823.MA.M  
 Quant Title : SVOA CALIBRATION

TIC Library : C:\Database\NIST20.L  
 TIC Integration Parameters: LSCINT.P

\*\*\*\*\*  
 Peak Number 1 7,9-Di-tert-butyl-1-oxaspiro... Concentration Rank 1

R.T.	EstConc	Area	Relative to ISTD	R.T.
17.889	4.31 ng/ul	613059	Phenanthrene-d10	17.218

Hit#	of	5	Tentative ID	MW	MolForm	CAS#	Qual
1			7,9-Di-tert-butyl-1-oxaspiro(4,5... 276	C17H24O3	082304-66-3	99	
2			2,5-Cyclohexadien-1-one, 2,6-bis... 232	C16H24O	006738-27-8	80	
3			7,9-Di-tert-butyl-1-oxaspiro(4,5... 276	C17H24O3	082304-66-3	55	
4			7,9-Di-tert-butyl-1-oxaspiro(4,5... 276	C17H24O3	082304-66-3	50	
5			1-(3-Amino-4,6-dimethylthieno[2,... 220	C11H12N2OS	052505-42-7	38	



Data Path : Z:\svoasrv\HPCHEM1\BNA\_M\Data\BM042523\  
Data File : BM039647.D  
Acq On : 25 Apr 2023 19:05  
Operator : CG/JU  
Sample : 02488-01  
Misc :  
ALS Vial : 16 Sample Multiplier: 1

Instrument :  
BNA\_M  
ClientSampleId :  
BHE57

Quant Method : Z:\svoasrv\HPCHEM1\BNA\_M\Methods\SFAM-EPA-BM041823.MA.M  
Quant Title : SVOA CALIBRATION

TIC Library : C:\Database\NIST20.L  
TIC Integration Parameters: LSCINT.P

TIC Top Hit name	RT	EstConc	Units	Response	--Internal Standard--			
					#	RT	Resp	Conc
7,9-Di-tert-but...	17.889	4.3	ng/u1	613059	4	17.218	2842300	20.0