

Data Path : Z:\svoasrv\HPCHEM1\BNA\_M\Data\BM043021\  
 Data File : BM029719.D  
 Acq On : 29 Apr 2021 21:13  
 Operator : CG/JU  
 Sample : M2217-15  
 Misc :  
 ALS Vial : 16 Sample Multiplier: 1

Instrument :  
 BNA\_M  
 ClientSampleId :  
 HTRCV2-GRAB-CF02-01

Quant Time: Apr 30 01:08:41 2021  
 Quant Method : Z:\svoasrv\HPCHEM1\BNA\_M\Methods\8270-BM043021.M  
 Quant Title : ASP BNA STANDARDS FOR 5 POINT CALIBRATION  
 QLast Update : Thu Apr 29 17:34:54 2021  
 Response via : Initial Calibration

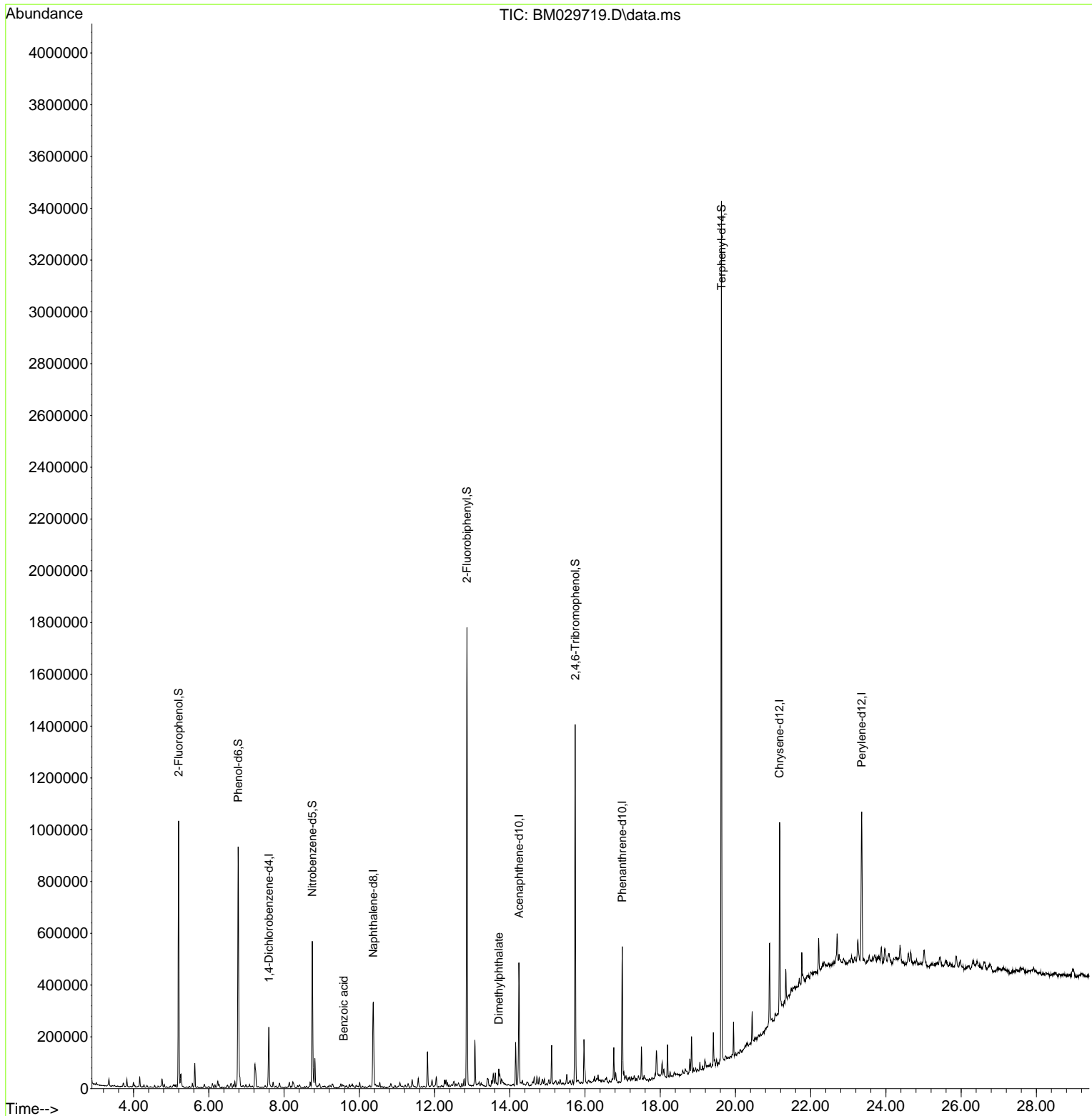
Compound	R.T.	QIon	Response	Conc	Units	Dev(Min)
Internal Standards						
1) 1,4-Dichlorobenzene-d4	7.598	152	69902	20.00	ng	0.00
21) Naphthalene-d8	10.375	136	239972	20.00	ng	0.00
39) Acenaphthene-d10	14.245	164	154901	20.00	ng	0.00
64) Phenanthrene-d10	16.992	188	330882	20.00	ng	# 0.00
76) Chrysene-d12	21.174	240	379308	20.00	ng	0.00
86) Perylene-d12	23.356	264	420557	20.00	ng	0.00
System Monitoring Compounds						
5) 2-Fluorophenol	5.198	112	431079	128.58	ng	0.00
7) Phenol-d6	6.781	99	523759	115.05	ng	0.00
23) Nitrobenzene-d5	8.751	82	332253	80.00	ng	0.00
42) 2,4,6-Tribromophenol	15.739	330	277938	113.02	ng	0.00
45) 2-Fluorobiphenyl	12.863	172	958734	80.27	ng	0.00
79) Terphenyl-d14	19.627	244	1518343	73.47	ng	0.00
Target Compounds						
32) Benzoic acid	9.586	122	54	4.91	ng	# 1
50) Dimethylphthalate	13.710	163	36172	3.06	ng	99

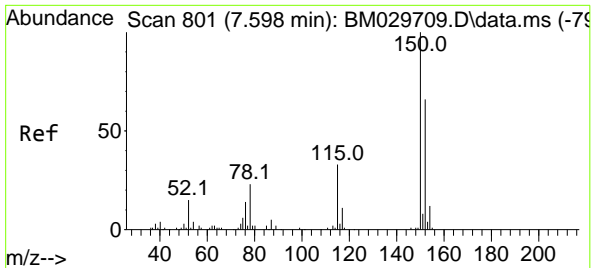
(#) = qualifier out of range (m) = manual integration (+) = signals summed

Data Path : Z:\svoasrv\HPCHEM1\BNA\_M\Data\BM043021\  
 Data File : BM029719.D  
 Acq On : 29 Apr 2021 21:13  
 Operator : CG/JU  
 Sample : M2217-15  
 Misc :  
 ALS Vial : 16 Sample Multiplier: 1

**Instrument :**  
 BNA\_M  
**ClientSampleId :**  
 HTCrv2-GRAB-CF02-01

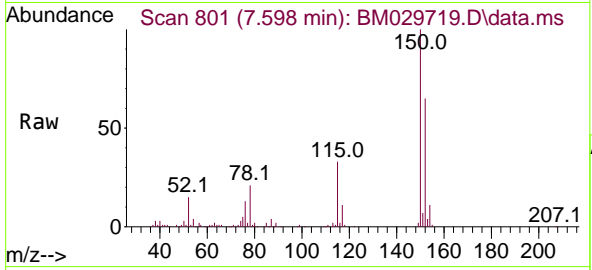
Quant Time: Apr 30 01:08:41 2021  
 Quant Method : Z:\svoasrv\HPCHEM1\BNA\_M\Methods\8270-BM043021.M  
 Quant Title : ASP BNA STANDARDS FOR 5 POINT CALIBRATION  
 QLast Update : Thu Apr 29 17:34:54 2021  
 Response via : Initial Calibration



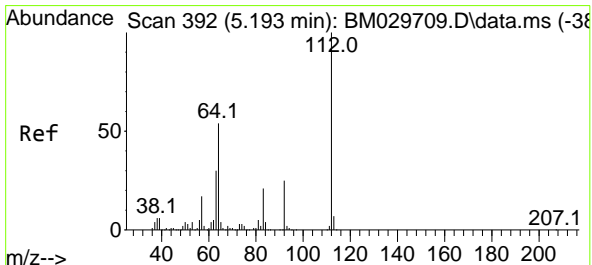
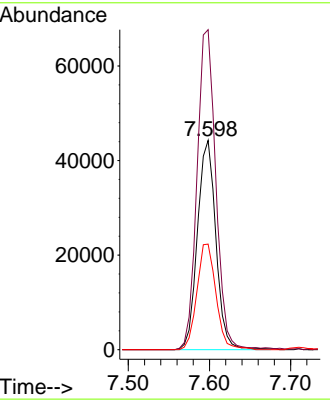
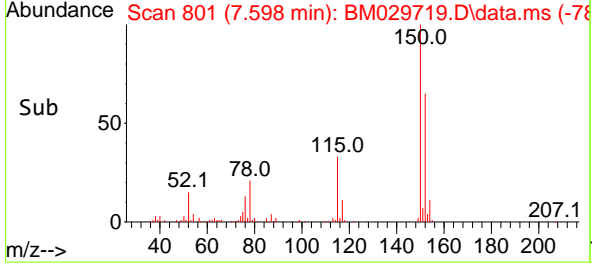


#1  
 1,4-Dichlorobenzene-d4  
 Concen: 20.00 ng  
 RT: 7.598 min Scan# 801  
 Delta R.T. 0.000 min  
 Lab File: BM029719.D  
 Acq: 29 Apr 2021 21:13

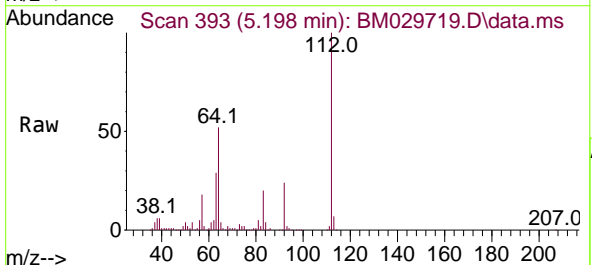
**Instrument :**  
 BNA\_M  
**ClientSampleId :**  
 HTRCV2-GRAB-CF02-01



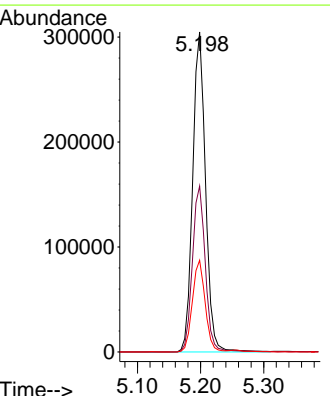
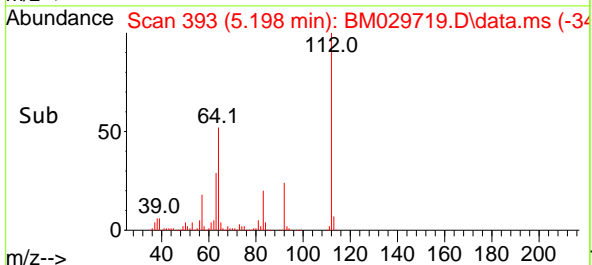
Tgt Ion:152 Resp: 69902  
 Ion Ratio Lower Upper  
 152 100  
 150 152.9 125.9 188.9  
 115 50.5 44.6 67.0

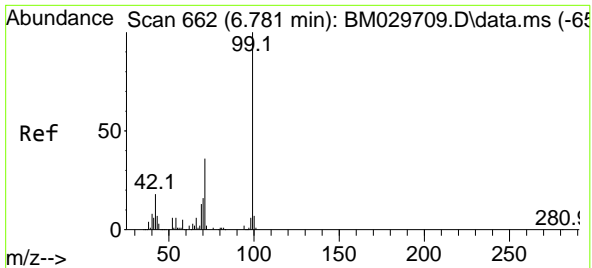


#5  
 2-Fluorophenol  
 Concen: 128.58 ng  
 RT: 5.198 min Scan# 393  
 Delta R.T. 0.006 min  
 Lab File: BM029719.D  
 Acq: 29 Apr 2021 21:13



Tgt Ion:112 Resp: 431079  
 Ion Ratio Lower Upper  
 112 100  
 64 51.8 47.1 70.7  
 63 28.6 27.3 40.9



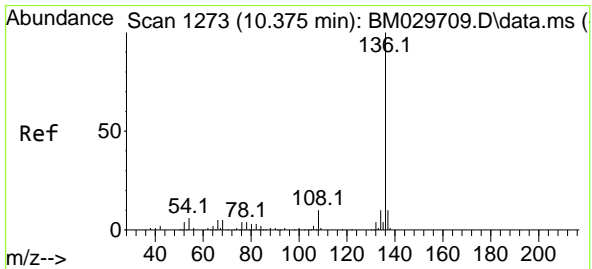
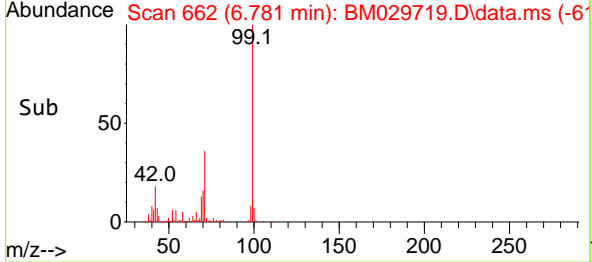
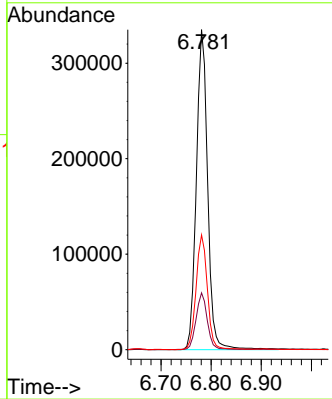
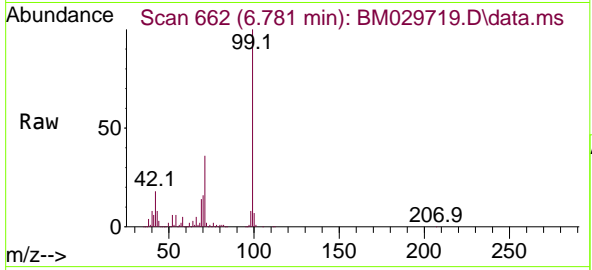


#7  
 Phenol-d6  
 Concen: 115.05 ng  
 RT: 6.781 min Scan# 662  
 Delta R.T. 0.000 min  
 Lab File: BM029719.D  
 Acq: 29 Apr 2021 21:13

**Instrument :**  
 BNA\_M  
**ClientSampleId :**  
 HTRCV2-GRAB-CF02-01

Tgt Ion: 99 Resp: 523759

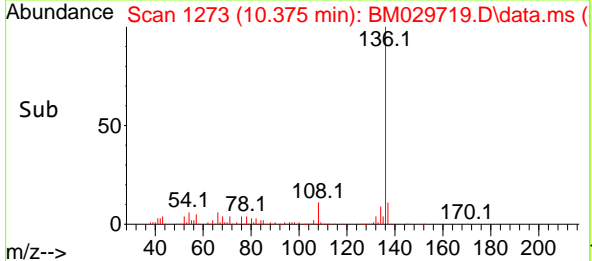
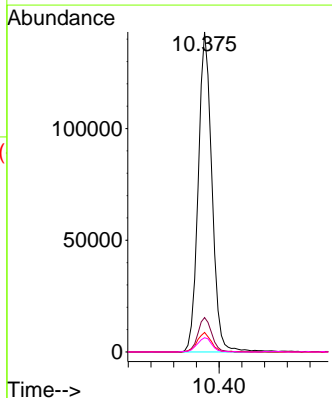
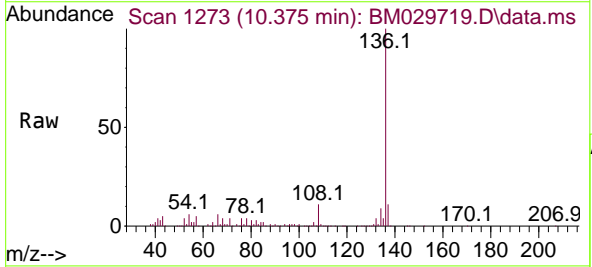
Ion	Ratio	Lower	Upper
99	100		
42	17.7	18.0	27.0#
71	35.9	30.9	46.3

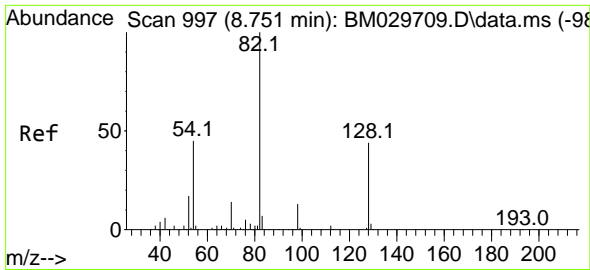


#21  
 Naphthalene-d8  
 Concen: 20.00 ng  
 RT: 10.375 min Scan# 1273  
 Delta R.T. -0.000 min  
 Lab File: BM029719.D  
 Acq: 29 Apr 2021 21:13

Tgt Ion: 136 Resp: 239972

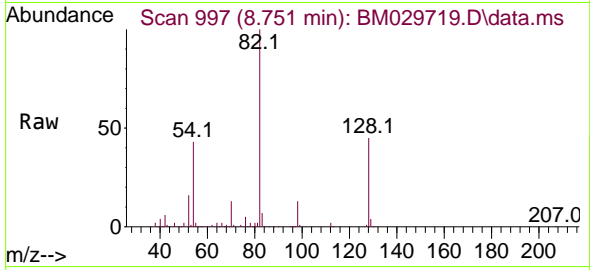
Ion	Ratio	Lower	Upper
136	100		
137	10.8	8.4	12.6
54	6.1	5.5	8.3
68	4.5	4.2	6.2





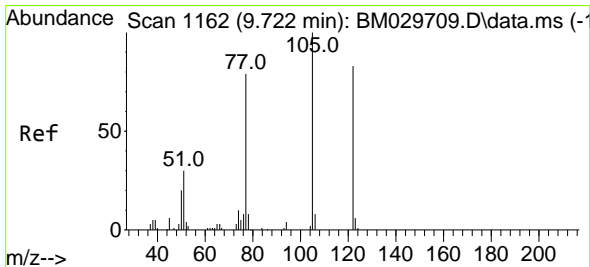
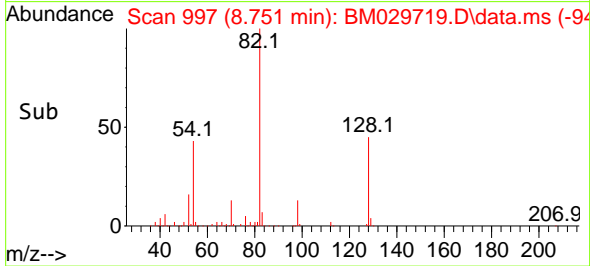
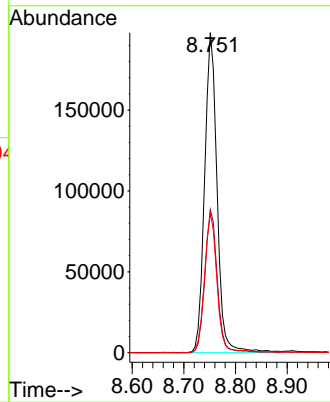
#23  
 Nitrobenzene-d5  
 Concen: 80.00 ng  
 RT: 8.751 min Scan# 997  
 Delta R.T. 0.000 min  
 Lab File: BM029719.D  
 Acq: 29 Apr 2021 21:13

**Instrument :**  
 BNA\_M  
**ClientSampleId :**  
 HTRCV2-GRAB-CF02-01



Tgt Ion: 82 Resp: 332253

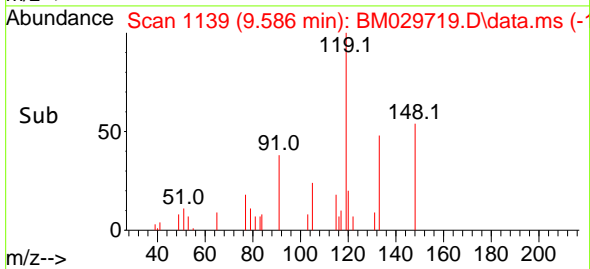
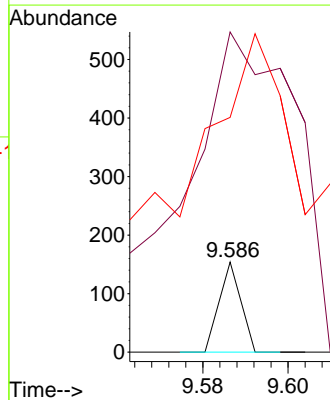
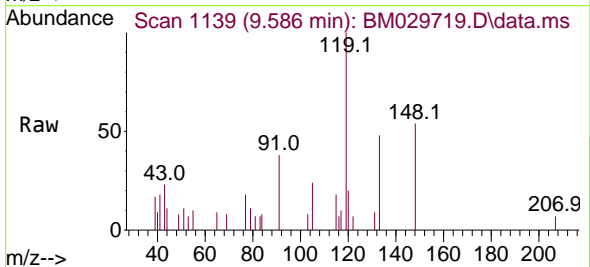
Ion	Ratio	Lower	Upper
82	100		
128	44.7	31.1	46.7
54	43.5	37.3	55.9

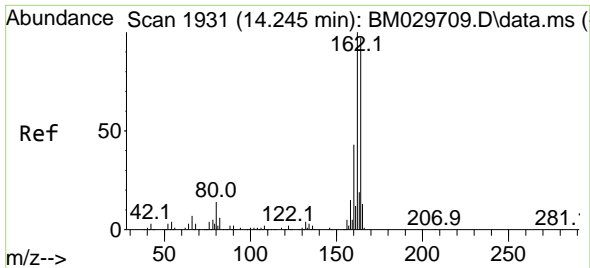


#32  
 Benzoic acid  
 Concen: 4.91 ng  
 RT: 9.586 min Scan# 1139  
 Delta R.T. -0.136 min  
 Lab File: BM029719.D  
 Acq: 29 Apr 2021 21:13

Tgt Ion: 122 Resp: 54

Ion	Ratio	Lower	Upper
122	100		
105	355.2	107.3	147.3#
77	260.4	88.0	128.0#



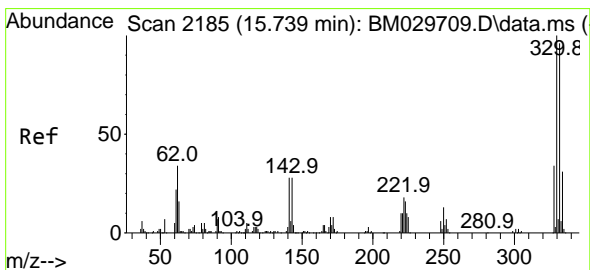
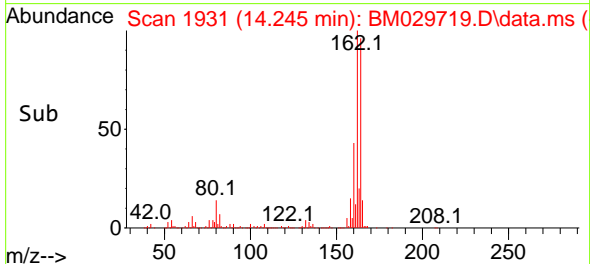
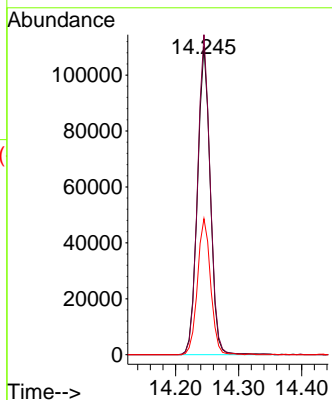
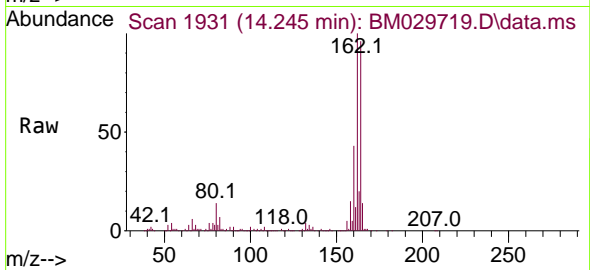


#39  
 Acenaphthene-d10  
 Concen: 20.00 ng  
 RT: 14.245 min Scan# 1931  
 Delta R.T. -0.000 min  
 Lab File: BM029719.D  
 Acq: 29 Apr 2021 21:13

**Instrument :**  
 BNA\_M  
**ClientSampleId :**  
 HTRCV2-GRAB-CF02-01

Tgt Ion:164 Resp: 154901

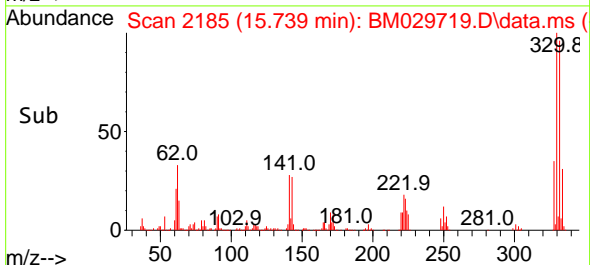
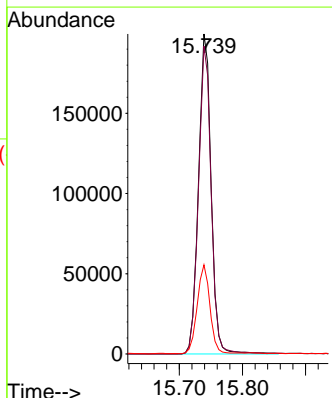
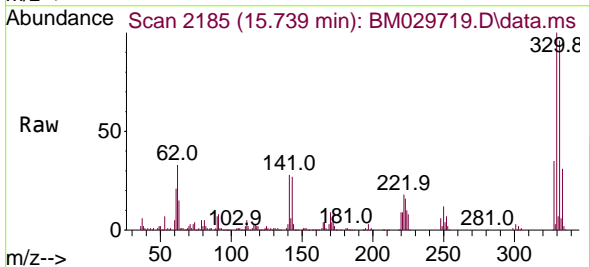
Ion	Ratio	Lower	Upper
164	100		
162	103.8	83.4	125.0
160	44.1	37.2	55.8

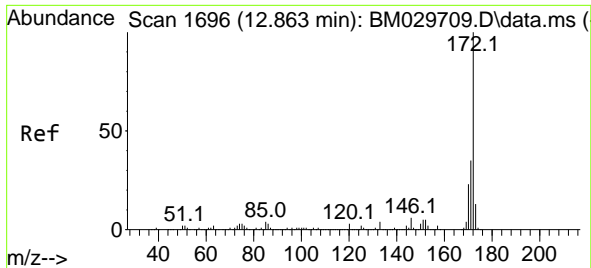


#42  
 2,4,6-Tribromophenol  
 Concen: 113.02 ng  
 RT: 15.739 min Scan# 2185  
 Delta R.T. 0.000 min  
 Lab File: BM029719.D  
 Acq: 29 Apr 2021 21:13

Tgt Ion:330 Resp: 277938

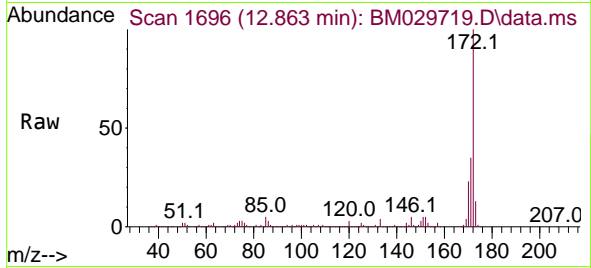
Ion	Ratio	Lower	Upper
330	100		
332	96.5	77.0	115.4
141	27.9	30.2	45.2#



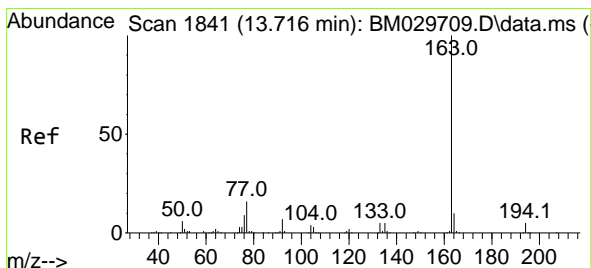
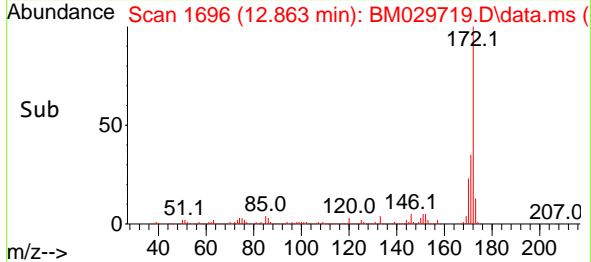
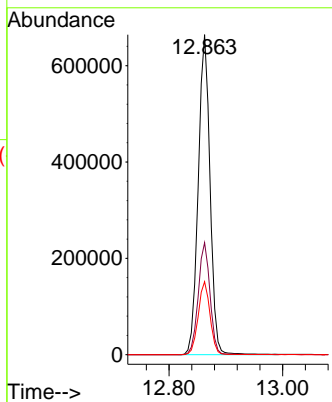


#45  
 2-Fluorobiphenyl  
 Concen: 80.27 ng  
 RT: 12.863 min Scan# 1696  
 Delta R.T. 0.000 min  
 Lab File: BM029719.D  
 Acq: 29 Apr 2021 21:13

Instrument :  
 BNA\_M  
 ClientSampleId :  
 HTRCV2-GRAB-CF02-01

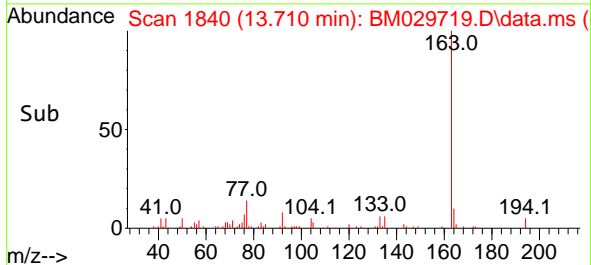
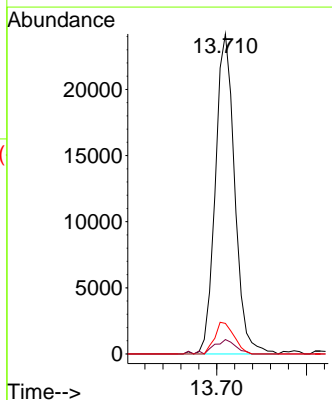
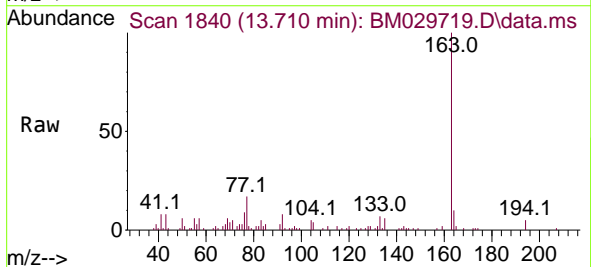


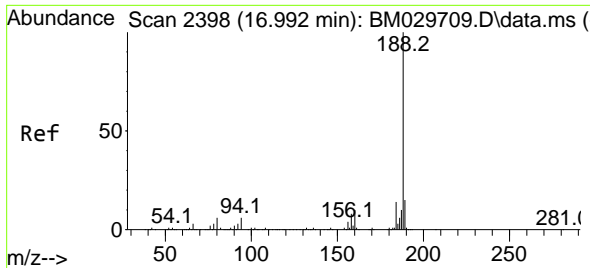
Tgt Ion:172 Resp: 958734  
 Ion Ratio Lower Upper  
 172 100  
 171 35.0 28.6 43.0  
 170 22.8 18.4 27.6



#50  
 Dimethylphthalate  
 Concen: 3.06 ng  
 RT: 13.710 min Scan# 1840  
 Delta R.T. -0.006 min  
 Lab File: BM029719.D  
 Acq: 29 Apr 2021 21:13

Tgt Ion:163 Resp: 36172  
 Ion Ratio Lower Upper  
 163 100  
 194 4.5 3.3 4.9  
 164 9.5 7.9 11.9



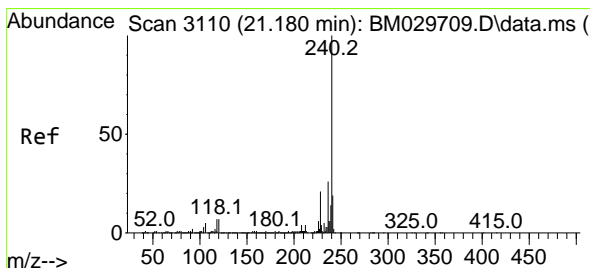
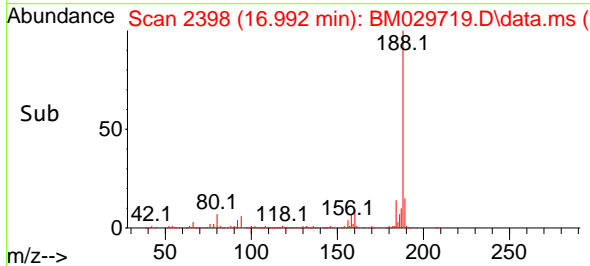
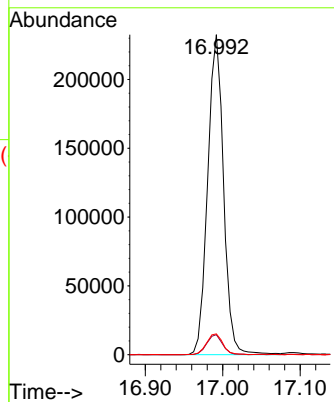
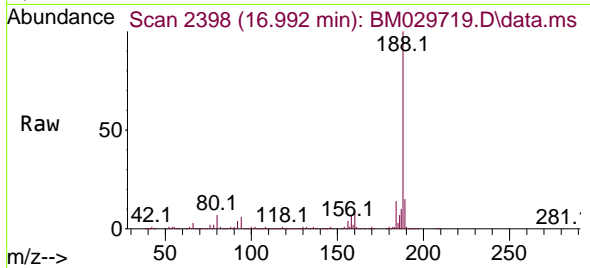


#64  
 Phenanthrene-d10  
 Concen: 20.00 ng  
 RT: 16.992 min Scan# 2398  
 Delta R.T. 0.000 min  
 Lab File: BM029719.D  
 Acq: 29 Apr 2021 21:13

Instrument :  
 BNA\_M  
 ClientSampleId :  
 HTRCV2-GRAB-CF02-01

Tgt Ion:188 Resp: 330882

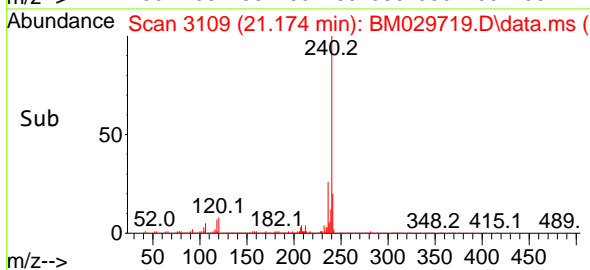
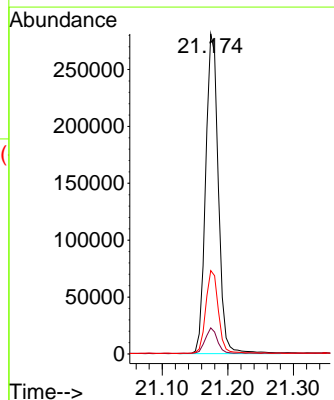
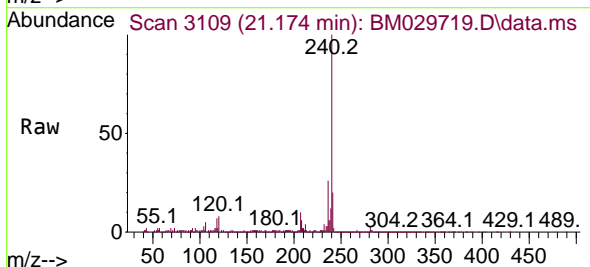
Ion	Ratio	Lower	Upper
188	100		
94	6.3	6.0	9.0
80	6.5	6.6	9.8#



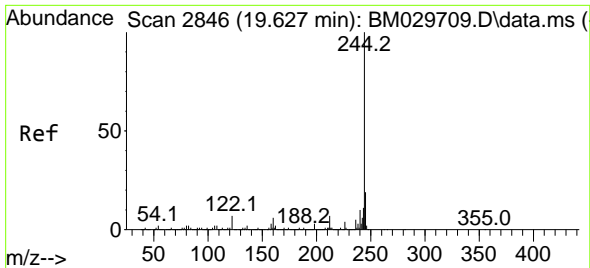
#76  
 Chrysene-d12  
 Concen: 20.00 ng  
 RT: 21.174 min Scan# 3109  
 Delta R.T. -0.006 min  
 Lab File: BM029719.D  
 Acq: 29 Apr 2021 21:13

Tgt Ion:240 Resp: 379308

Ion	Ratio	Lower	Upper
240	100		
120	8.1	7.0	10.6
236	26.0	21.0	31.4





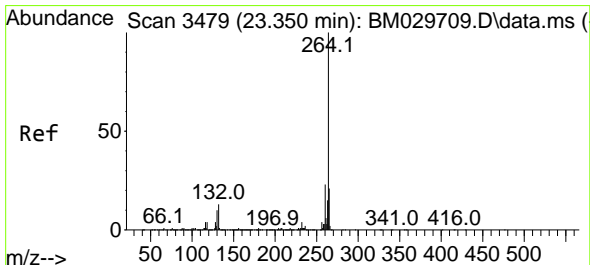
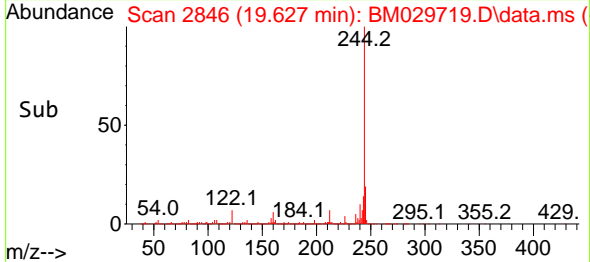
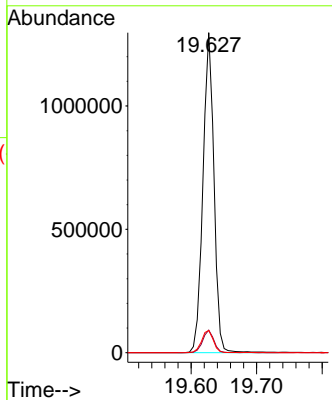
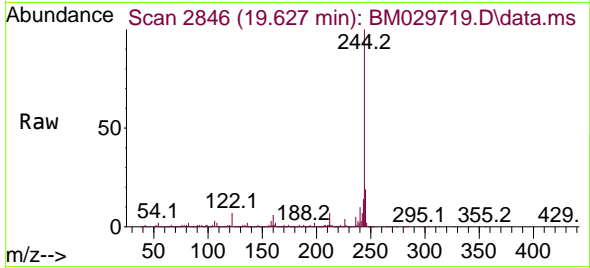


#79  
 Terphenyl-d14  
 Concen: 73.47 ng  
 RT: 19.627 min Scan# 2846  
 Delta R.T. 0.000 min  
 Lab File: BM029719.D  
 Acq: 29 Apr 2021 21:13

Instrument :  
 BNA\_M  
 ClientSampleId :  
 HTRCV2-GRAB-CF02-01

Tgt Ion:244 Resp: 1518343

Ion	Ratio	Lower	Upper
244	100		
212	7.0	6.3	9.5
122	7.0	6.9	10.3



#86  
 Perylene-d12  
 Concen: 20.00 ng  
 RT: 23.356 min Scan# 3480  
 Delta R.T. 0.006 min  
 Lab File: BM029719.D  
 Acq: 29 Apr 2021 21:13

Tgt Ion:264 Resp: 420557

Ion	Ratio	Lower	Upper
264	100		
260	23.6	19.8	29.8
265	21.9	17.7	26.5

