

Data Path : Z:\HPCHEM1\BNA M\DATA\BM050115\
 Data File : BM001156.D
 Acq On : 02 May 2015 07:29
 Operator : TP/IZ
 Sample : G2062-01
 Misc :
 ALS Vial : 16 Sample Multiplier: 1

Instrument :
 BNA_M
ClientSampled :
 MW1

Manual Integrations
APPROVED
 apatel
 5/5/2015 8:04:08 AM

Quant Time: May 04 17:38:14 2015
 Quant Method : Z:\HPCHEM1\BNA M\METHODS\SIMPAH-BM050115.M
 Quant Title : ASP BNA STANDARDS FOR 5 POINT CALIBRATION
 QLast Update : Mon May 04 16:48:07 2015
 Response via : Initial Calibration

Internal Standards	R.T.	QIon	Response	Conc	Units	Dev(Min)
1) 1,4-Dichlorobenzene-d4	7.53	152	7508	5.00	ng	0.00
6) Naphthalene-d8	10.31	136	29221	5.00	ng	0.00
12) Acenaphthene-d10	14.20	164	15899	5.00	ng	0.00
18) Phenanthrene-d10	16.94	188	38489	5.00	ng	0.00
24) Chrysene-d12	21.15	240	28859	5.00	ng	0.00
30) Perylene-d12	23.29	264	21955	5.00	ng	-0.01
System Monitoring Compounds						
4) 2-Fluorophenol	5.11	112	17867	12.24	ng	-0.01
5) Phenol-d6	6.71	99	14483	8.05	ng	0.00
7) Nitrobenzene-d5	8.69	82	37604	22.72	ng	0.00
13) 2,4,6-Tribromophenol	15.69	330	25854	32.79	ng	0.00
14) 2-Fluorobiphenyl	12.81	172	118424	22.52	ng	0.00
26) Terphenyl-d14	19.59	244	103933	26.12	ng	0.00
Target Compounds						
16) Acenaphthene	14.24	154	1143	0.24	ng	# 79
23) Fluoranthene	19.01	202	1074	0.11	ng	# 96
25) Pyrene	19.38	202	2367m	0.26	ng	
27) Benzo(a)anthracene	21.13	228	764	0.09	ng	# 86
28) Chrysene	21.18	228	745	0.09	ng	# 87
29) Indeno(1,2,3-cd)pyrene	25.43	276	574	0.08	ng	97

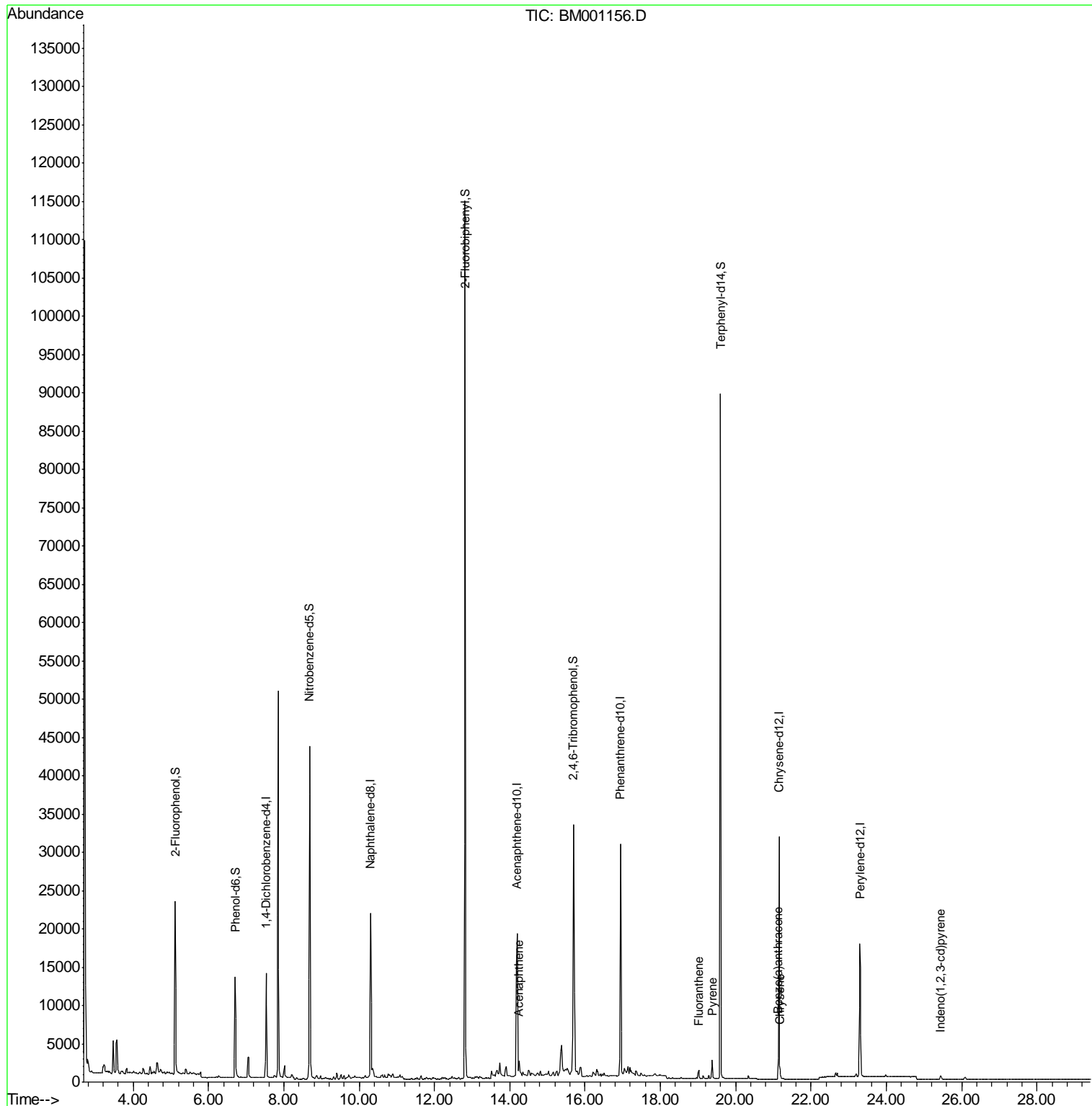
(#) = qualifier out of range (m) = manual integration (+) = signals summed

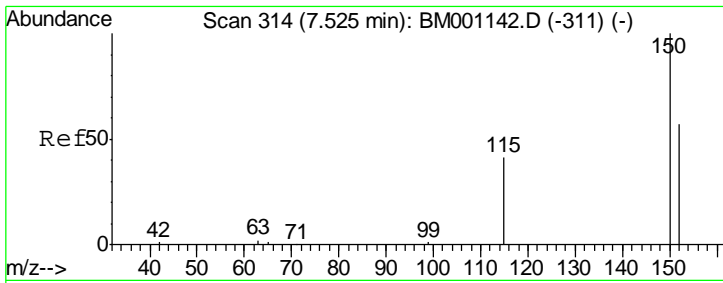
Data Path : Z:\HPCHEM1\BNA M\DATA\BM050115\
 Data File : BM001156.D
 Acq On : 02 May 2015 07:29
 Operator : TP/IZ
 Sample : G2062-01
 Misc :
 ALS Vial : 16 Sample Multiplier: 1

Instrument :
 BNA_M
 ClientSampled :
 MW1

Manual Integrations
 APPROVED
 apatel
 5/5/2015 8:04:08 AM

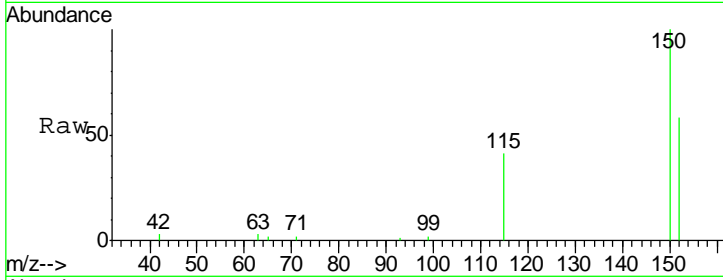
Quant Time: May 04 17:38:14 2015
 Quant Method : Z:\HPCHEM1\BNA M\METHODS\SIMPAH-BM050115.M
 Quant Title : ASP BNA STANDARDS FOR 5 POINT CALIBRATION
 QLast Update : Mon May 04 16:48:07 2015
 Response via : Initial Calibration





#1
 1,4-Dichlorobenzene-d4
 Concen: 5.00 ng
 RT: 7.53 min Scan# 314
 Delta R.T. 0.00 min
 Lab File: BM001156.D
 Acq: 02 May 2015 07:29

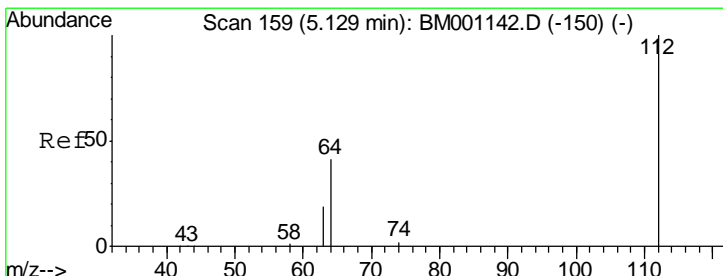
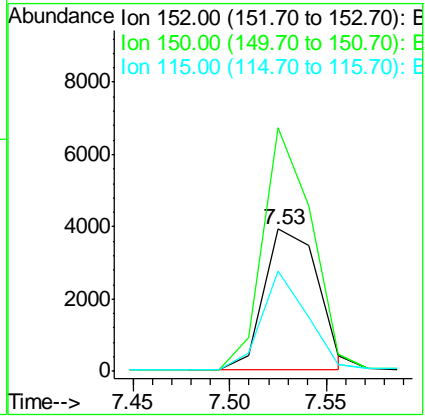
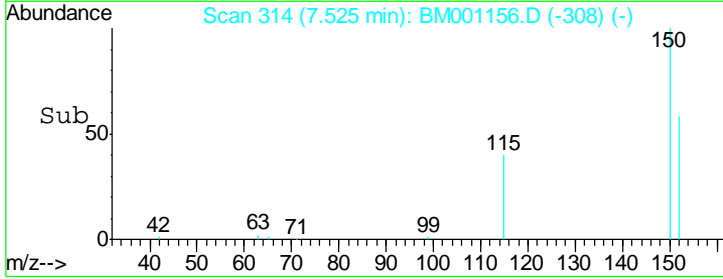
Instrument :
 BNA_M
ClientSampled :
 MW1



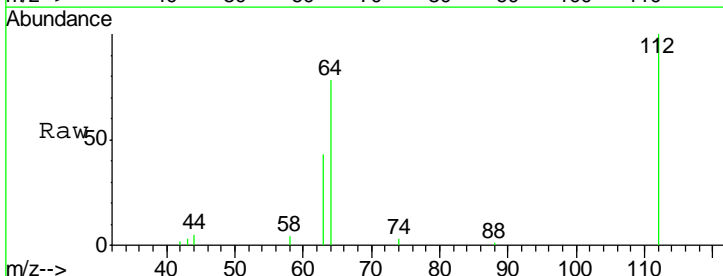
Tgt Ion: 152 Resp: 7508

Ion	Ratio	Lower	Upper
152	100		
150	171.6	140.1	210.1
115	70.5	57.8	86.6

Manual Integrations
APPROVED
 apatel
 5/5/2015 8:04:08 AM

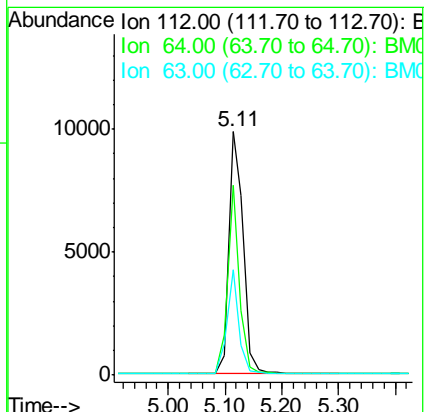
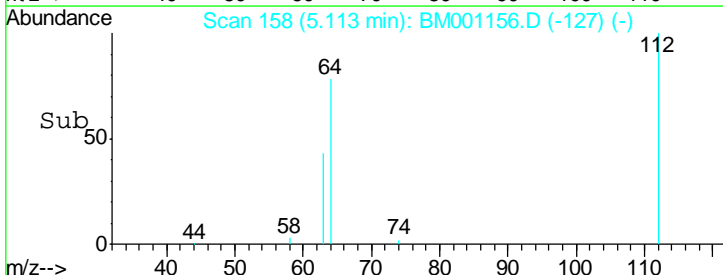


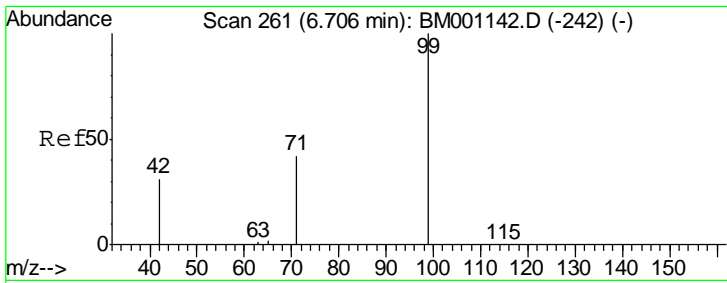
#4
 2-Fluorophenol
 Concen: 12.24 ng
 RT: 5.11 min Scan# 158
 Delta R.T. -0.01 min
 Lab File: BM001156.D
 Acq: 02 May 2015 07:29



Tgt Ion: 112 Resp: 17867

Ion	Ratio	Lower	Upper
112	100		
64	64.7	52.6	79.0
63	35.8	29.5	44.3



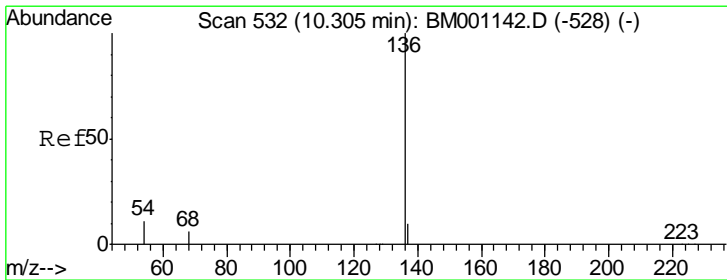
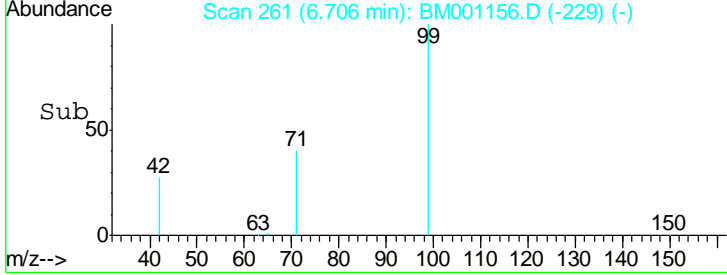
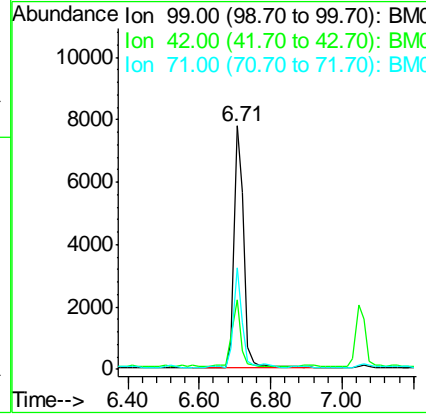
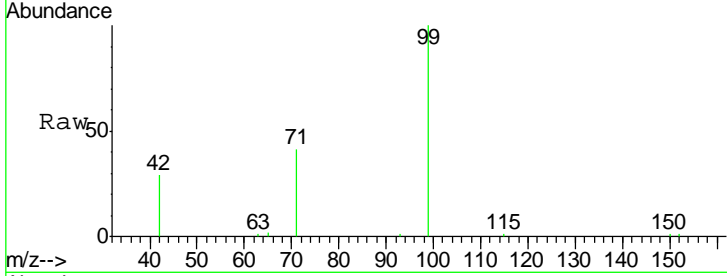


#5
 Phenol-d6
 Concen: 8.05 ng
 RT: 6.71 min Scan# 261
 Delta R.T. 0.00 min
 Lab File: BM001156.D
 Acq: 02 May 2015 07:29

Instrument :
 BNA_M
ClientSampled :
 MW1

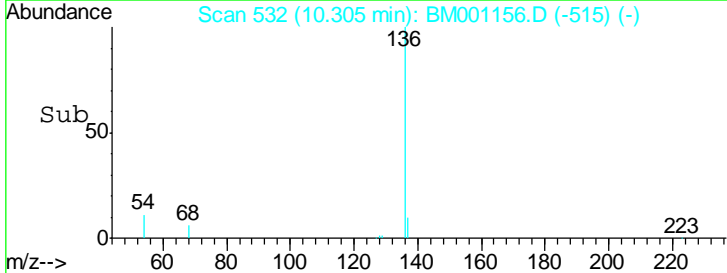
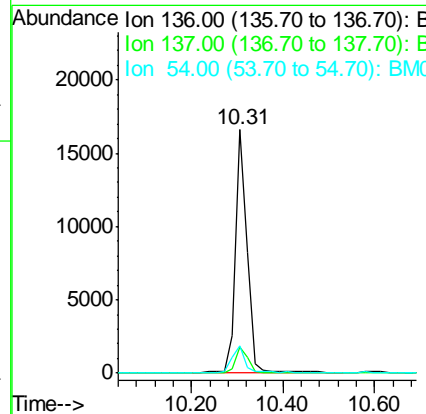
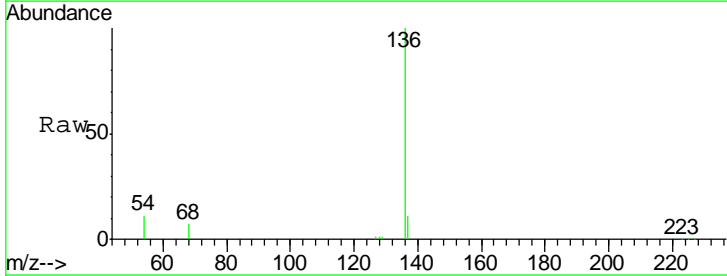
Tgt Ion	Resp	Lower	Upper
99	14483		
42	24.2	20.9	31.3
71	36.0	28.5	42.7

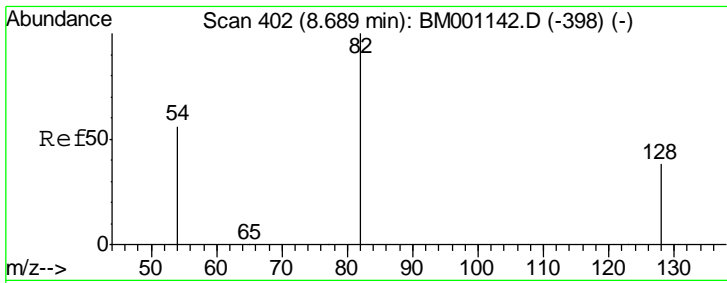
Manual Integrations
APPROVED
 apatel
 5/5/2015 8:04:08 AM



#6
 Naphthalene-d8
 Concen: 5.00 ng
 RT: 10.31 min Scan# 532
 Delta R.T. 0.00 min
 Lab File: BM001156.D
 Acq: 02 May 2015 07:29

Tgt Ion	Resp	Lower	Upper
136	29221		
137	10.5	8.2	12.4
54	11.5	9.0	13.4



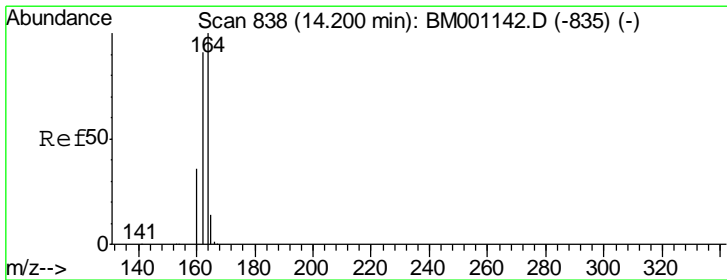
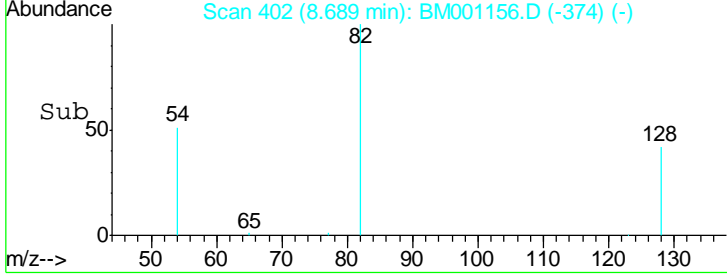
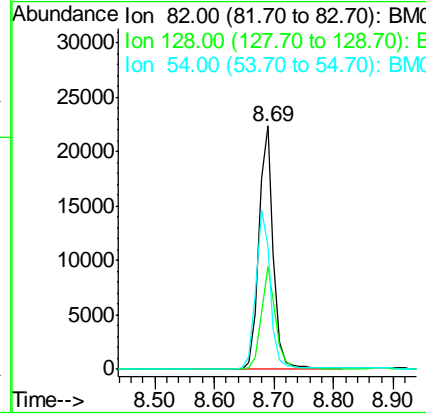
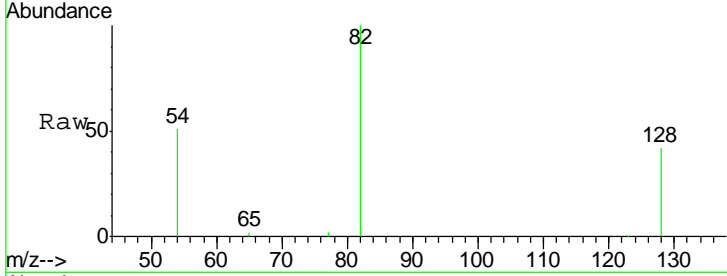


#7
 Nitrobenzene-d5
 Concen: 22.72 ng
 RT: 8.69 min Scan# 402
 Delta R.T. 0.00 min
 Lab File: BM001156.D
 Acq: 02 May 2015 07:29

Instrument :
 BNA_M
ClientSampled :
 MW1

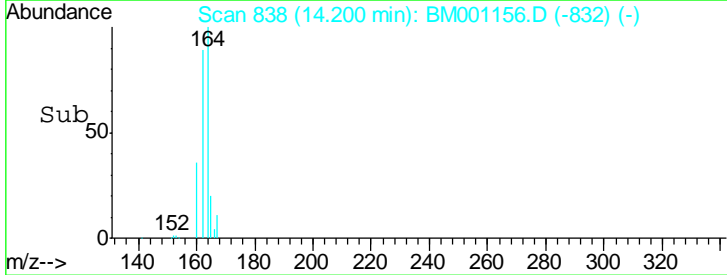
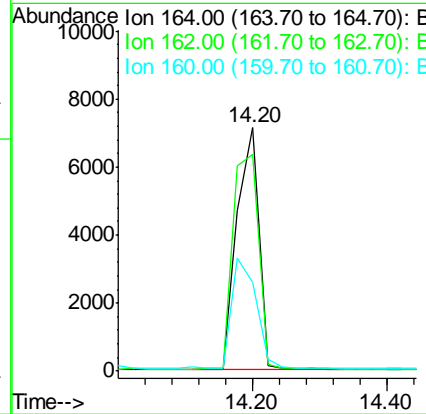
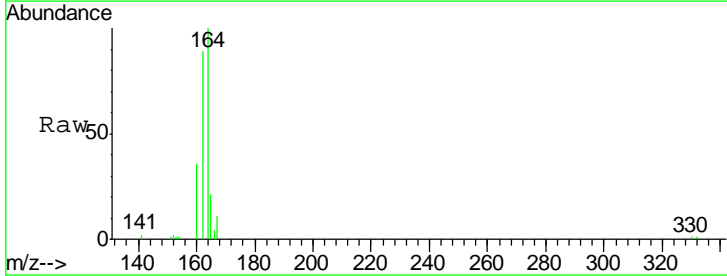
Tgt Ion	Resp	Lower	Upper
82	37604		
128	42.2	31.9	47.9
54	50.7	46.2	69.2

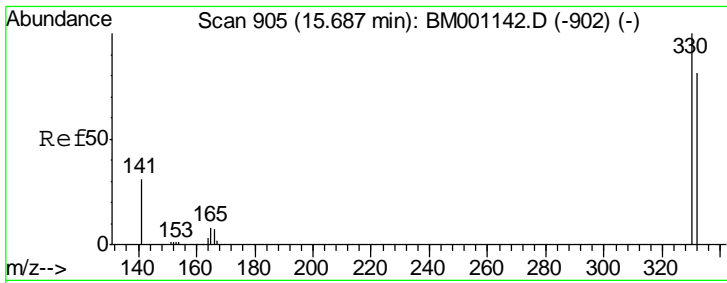
Manual Integrations
APPROVED
 apatel
 5/5/2015 8:04:08 AM



#12
 Acenaphthene-d10
 Concen: 5.00 ng
 RT: 14.20 min Scan# 838
 Delta R.T. 0.00 min
 Lab File: BM001156.D
 Acq: 02 May 2015 07:29

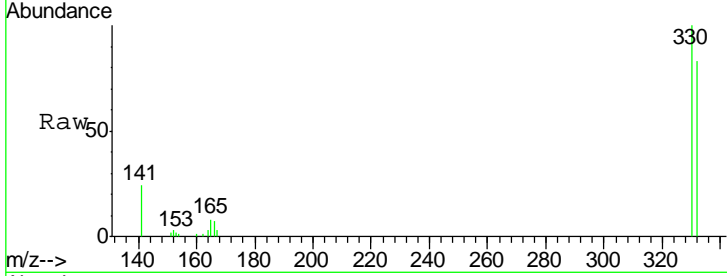
Tgt Ion	Resp	Lower	Upper
164	15899		
162	89.2	72.7	109.1
160	36.4	28.7	43.1





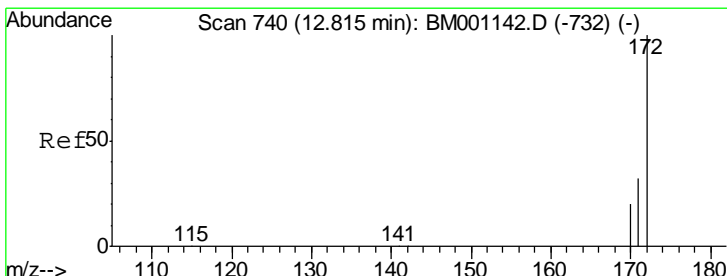
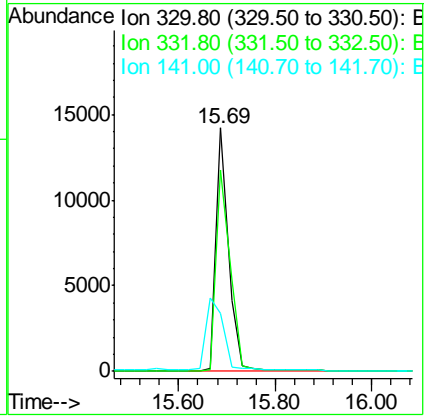
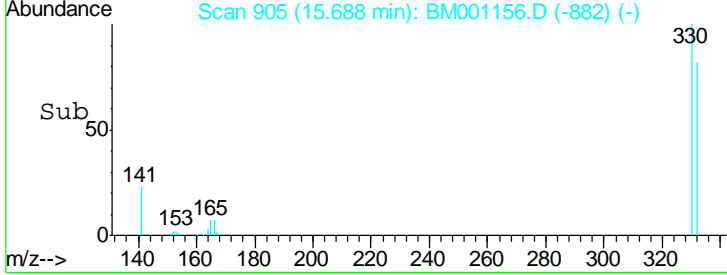
#13
 2,4,6-Tribromophenol
 Concen: 32.79 ng
 RT: 15.69 min Scan# 905
 Delta R.T. 0.00 min
 Lab File: BM001156.D
 Acq: 02 May 2015 07:29

Instrument :
 BNA_M
 ClientSampled :
 MW1

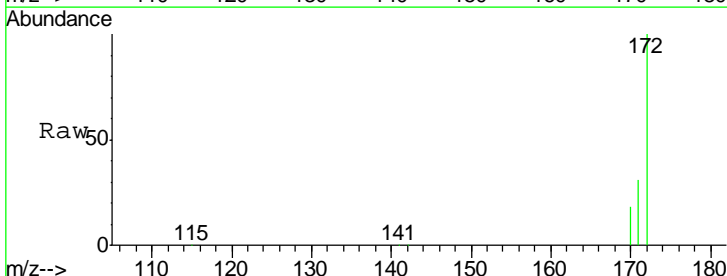


Tgt Ion	Resp	Lower	Upper
330	100		
332	93.1	74.5	111.7
141	0.0	21.0	31.4#

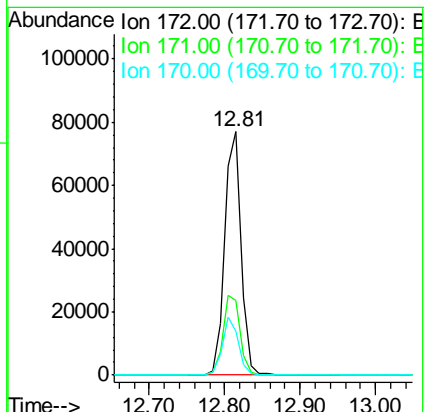
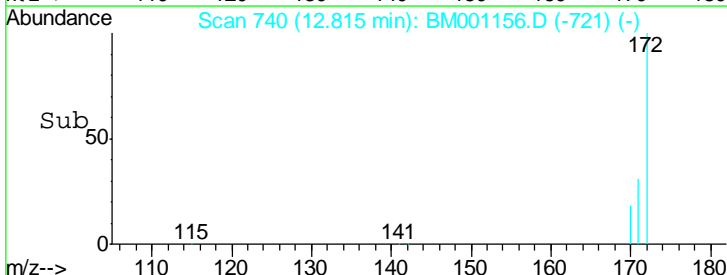
Manual Integrations
 APPROVED
 apatel
 5/5/2015 8:04:08 AM

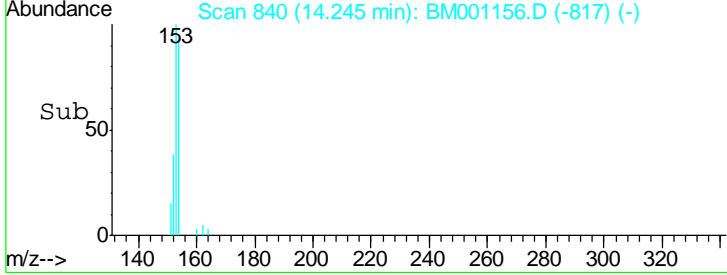
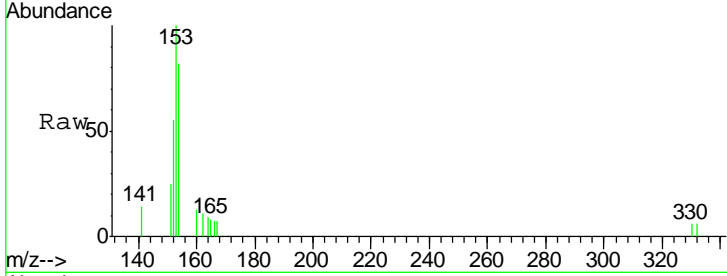
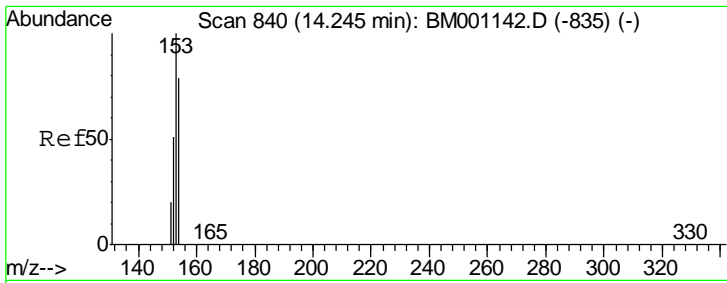


#14
 2-Fluorobiphenyl
 Concen: 22.52 ng
 RT: 12.81 min Scan# 740
 Delta R.T. 0.00 min
 Lab File: BM001156.D
 Acq: 02 May 2015 07:29



Tgt Ion	Resp	Lower	Upper
172	100		
171	30.8	25.8	38.6
170	18.0	16.1	24.1



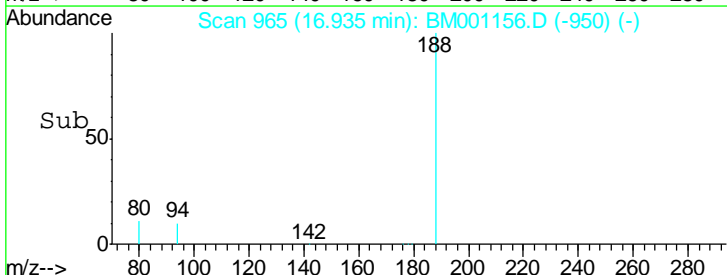
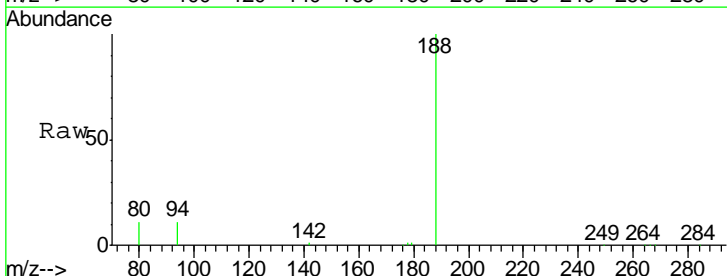
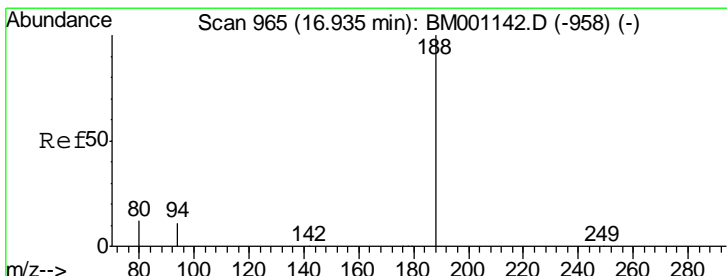
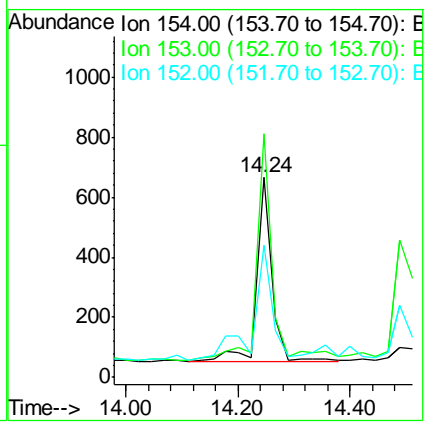


#16
 Acenaphthene
 Concen: 0.24 ng
 RT: 14.24 min Scan# 840
 Delta R.T. 0.00 min
 Lab File: BM001156.D
 Acq: 02 May 2015 07:29

Tgt Ion	Resp	Lower	Upper
154	100		
153	126.9	90.6	136.0
152	84.3	45.0	67.4

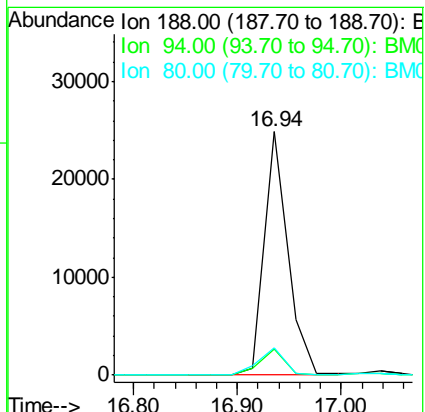
Instrument :
 BNA_M
 ClientSampled :
 MW1

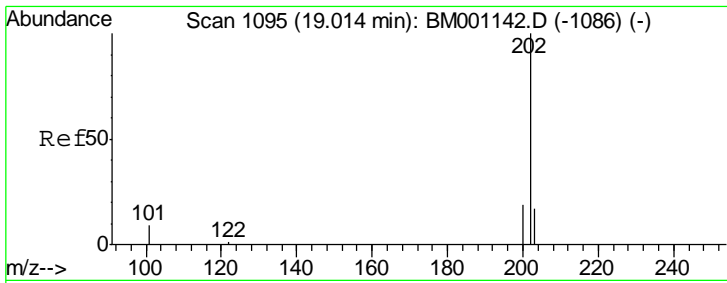
Manual Integrations
 APPROVED
 apatel
 5/5/2015 8:04:08 AM



#18
 Phenanthrene-d10
 Concen: 5.00 ng
 RT: 16.94 min Scan# 965
 Delta R.T. 0.00 min
 Lab File: BM001156.D
 Acq: 02 May 2015 07:29

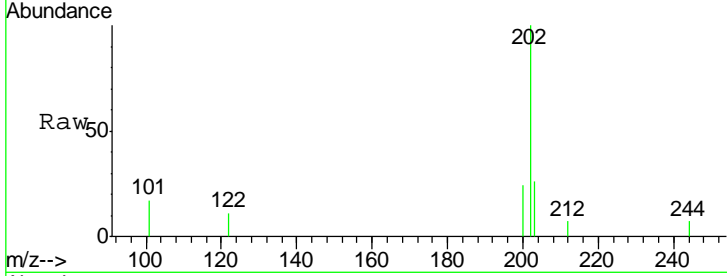
Tgt Ion	Resp	Lower	Upper
188	100		
94	10.7	9.3	13.9
80	11.1	9.8	14.6





#23
 Fluoranthene
 Concen: 0.11 ng
 RT: 19.01 min Scan# 1095
 Delta R.T. 0.00 min
 Lab File: BM001156.D
 Acq: 02 May 2015 07:29

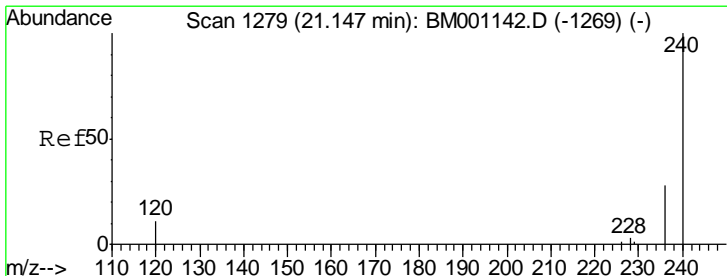
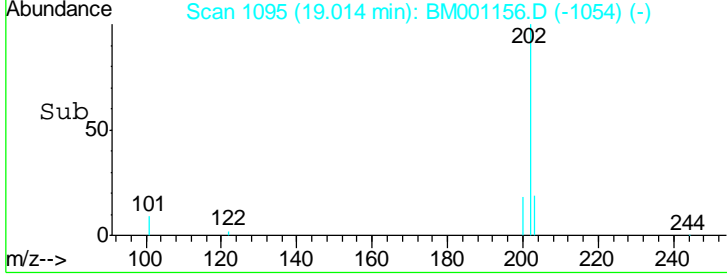
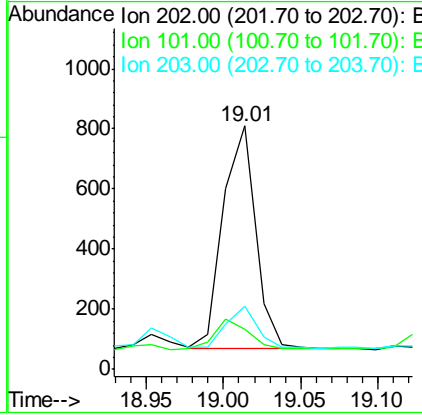
Instrument :
 BNA_M
 ClientSampled :
 MW1



Tgt Ion: 202 Resp: 1074

Ion	Ratio	Lower	Upper
202	100		
101	14.4	9.3	13.9#
203	17.6	13.7	20.5

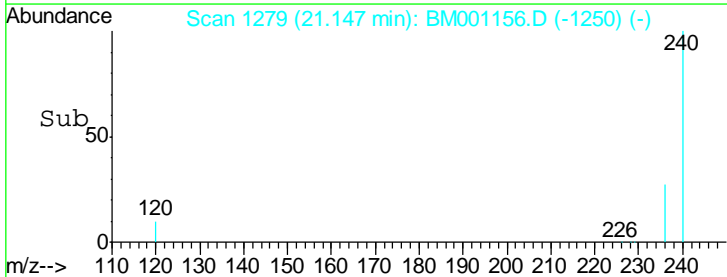
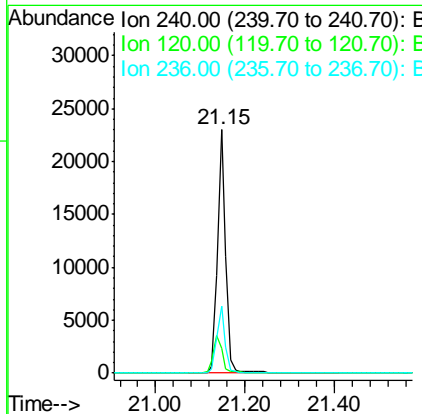
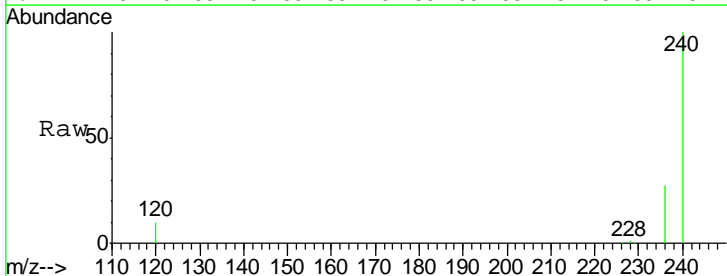
Manual Integrations
 APPROVED
 apatel
 5/5/2015 8:04:08 AM

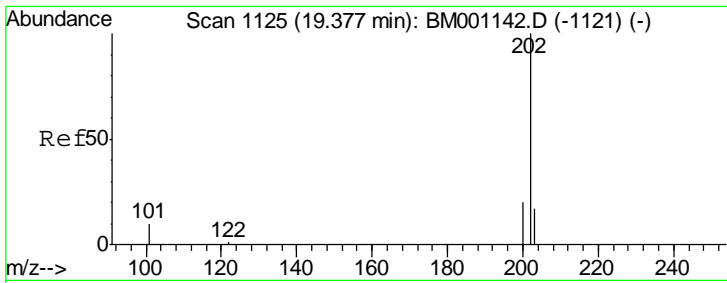


#24
 Chrysene-d12
 Concen: 5.00 ng
 RT: 21.15 min Scan# 1279
 Delta R.T. 0.00 min
 Lab File: BM001156.D
 Acq: 02 May 2015 07:29

Tgt Ion: 240 Resp: 28859

Ion	Ratio	Lower	Upper
240	100		
120	10.4	9.2	13.8
236	27.4	22.4	33.6



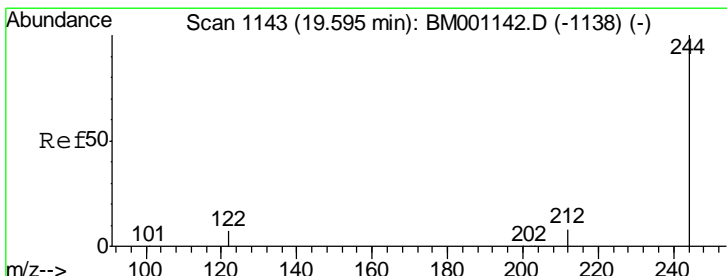
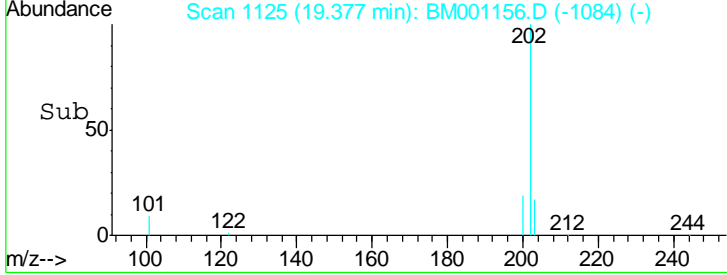
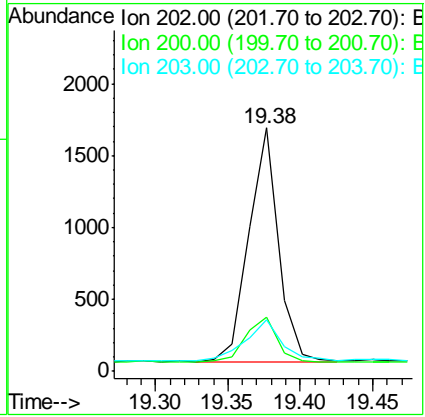
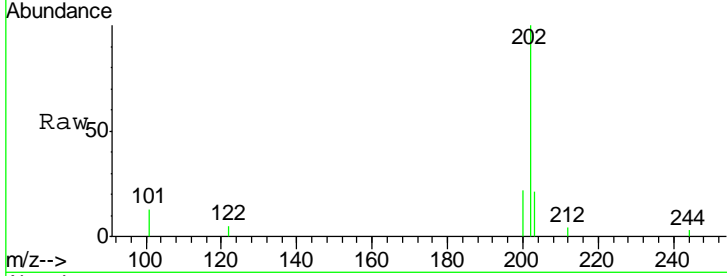


#25
 Pyrene
 Concen: 0.26 ng/ml
 RT: 19.38 min Scan# 1125
 Delta R.T. 0.00 min
 Lab File: BM001156.D
 Acq: 02 May 2015 07:29

Instrument :
 BNA_M
 ClientSampled :
 MW1

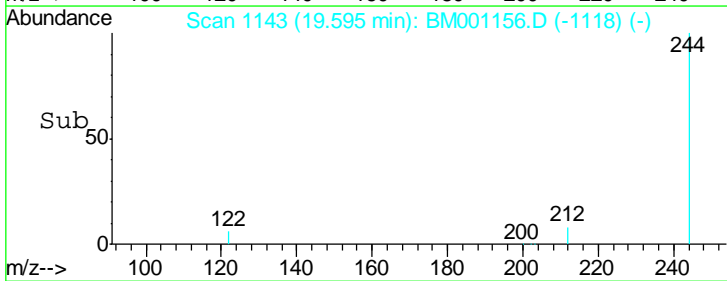
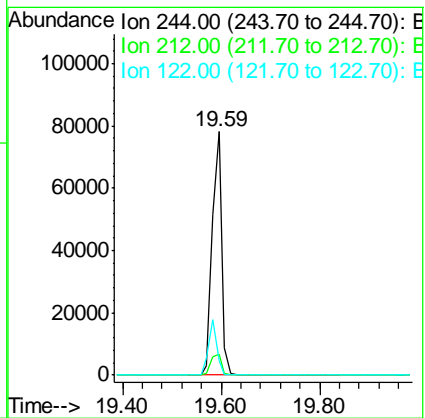
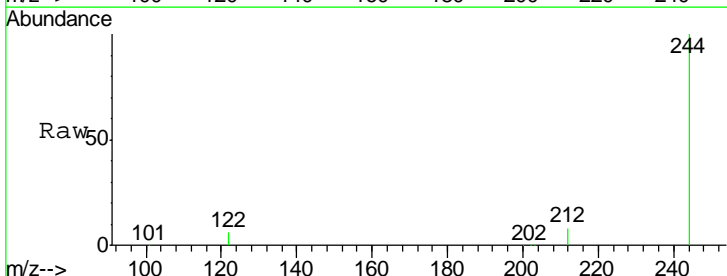
Tgt Ion	Ratio	Lower	Upper
202	100		
200	9.9	16.4	24.6#
203	8.0	13.8	20.6#

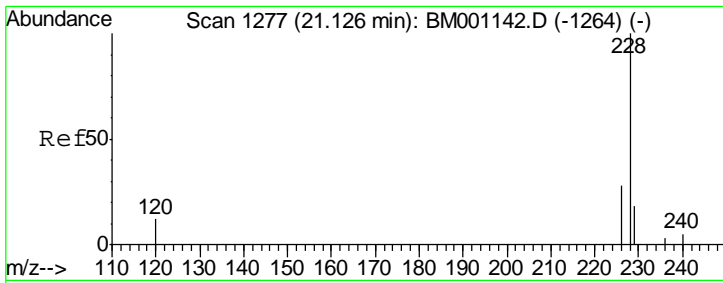
Manual Integrations
APPROVED
 apatel
 5/5/2015 8:04:08 AM



#26
 Terphenyl-d14
 Concen: 26.12 ng
 RT: 19.59 min Scan# 1143
 Delta R.T. 0.00 min
 Lab File: BM001156.D
 Acq: 02 May 2015 07:29

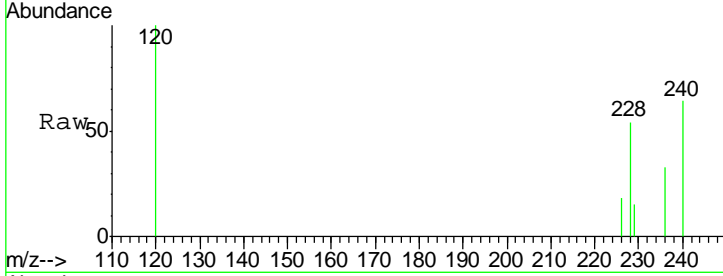
Tgt Ion	Ratio	Lower	Upper
244	100		
212	8.5	7.1	10.7
122	5.8	6.2	9.4#





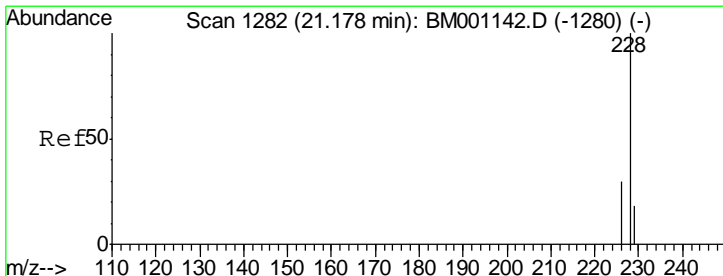
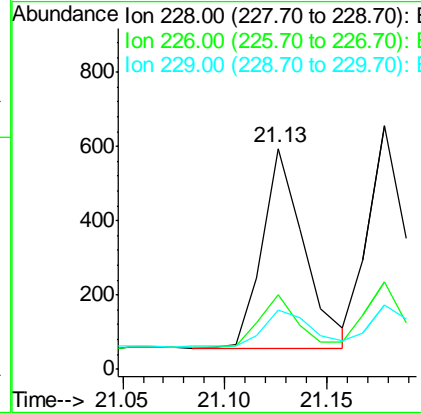
#27
 Benzo(a)anthracene
 Concen: 0.09 ng
 RT: 21.13 min Scan# 1277
 Delta R.T. 0.00 min
 Lab File: BM001156.D
 Acq: 02 May 2015 07:29

Instrument :
 BNA_M
 ClientSampled :
 MW1

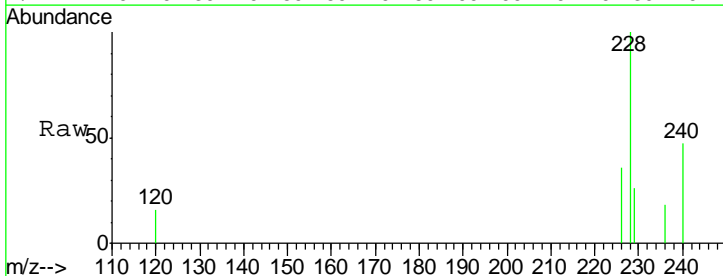


Tgt Ion	Resp	Lower	Upper
228	100		
226	33.7	22.8	34.2
229	27.1	14.4	21.6

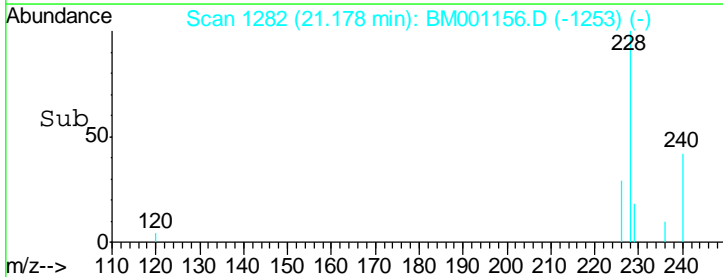
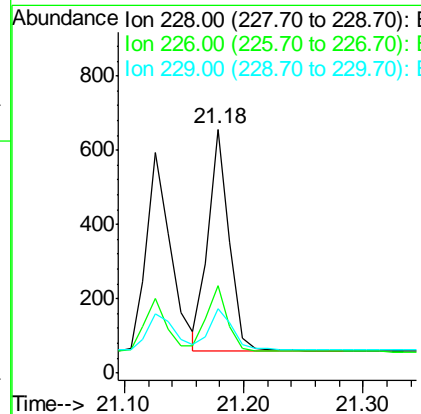
Manual Integrations
 APPROVED
 apatel
 5/5/2015 8:04:08 AM

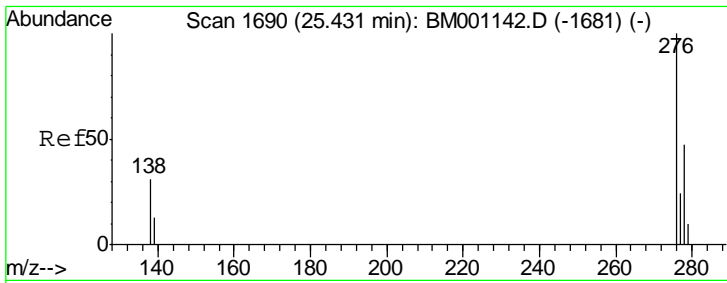


#28
 Chrysene
 Concen: 0.09 ng
 RT: 21.18 min Scan# 1282
 Delta R.T. 0.00 min
 Lab File: BM001156.D
 Acq: 02 May 2015 07:29



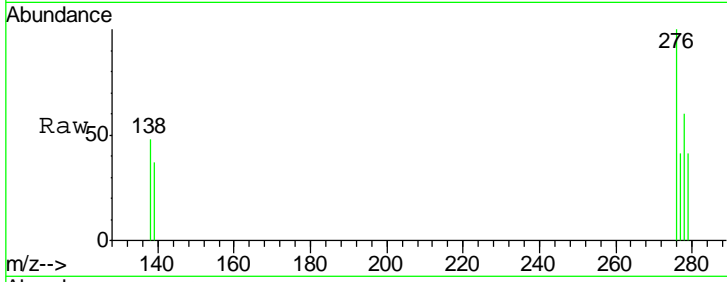
Tgt Ion	Resp	Lower	Upper
228	100		
226	35.8	24.4	36.6
229	26.2	14.3	21.5





#29
 Indeno(1,2,3-cd)pyrene
 Concen: 0.08 ng
 RT: 25.43 min Scan# 1690
 Delta R.T. 0.00 min
 Lab File: BM001156.D
 Acq: 02 May 2015 07:29

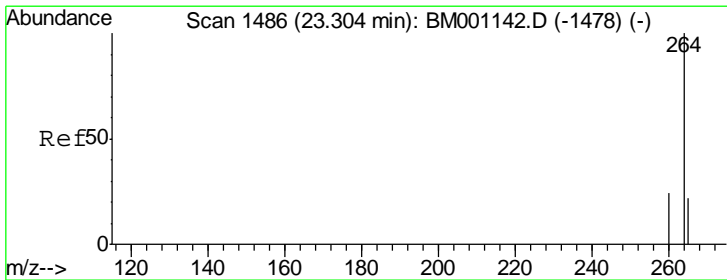
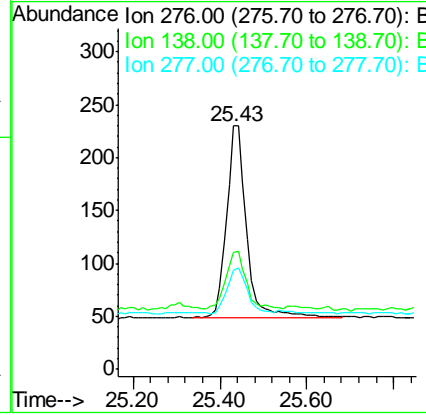
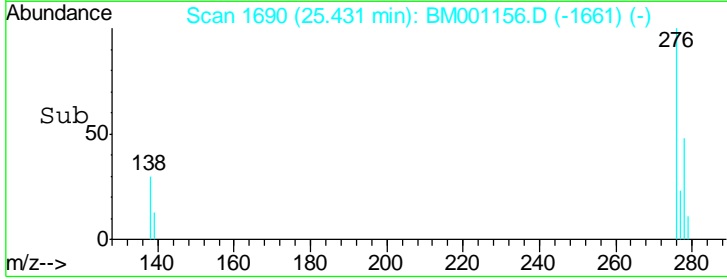
Instrument :
 BNA_M
 ClientSampled :
 MW1



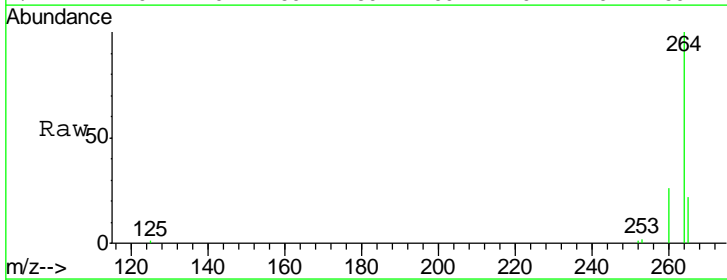
Tgt Ion: 276 Resp: 574

Ion	Ratio	Lower	Upper
276	100		
138	32.8	24.2	36.4
277	24.9	19.8	29.6

Manual Integrations
 APPROVED
 apatel
 5/5/2015 8:04:08 AM



#30
 Perylene-d12
 Concen: 5.00 ng
 RT: 23.29 min Scan# 1485
 Delta R.T. -0.01 min
 Lab File: BM001156.D
 Acq: 02 May 2015 07:29



Tgt Ion: 264 Resp: 21955

Ion	Ratio	Lower	Upper
264	100		
260	26.5	18.9	28.3
265	21.7	18.1	27.1

