

Data Path : Z:\HPCHEM1\BNA M\DATA\BM050115\
 Data File : BM001169.D
 Acq On : 02 May 2015 15:14
 Operator : TP/IZ
 Sample : G2057-10
 Misc :
 ALS Vial : 29 Sample Multiplier: 1

Instrument :
 BNA_M
 ClientSampleId :
 FB-042815

Quant Time: May 04 17:35:03 2015
 Quant Method : Z:\HPCHEM1\BNA M\METHODS\SIMPAH-BM050115.M
 Quant Title : ASP BNA STANDARDS FOR 5 POINT CALIBRATION
 QLast Update : Mon May 04 16:48:07 2015
 Response via : Initial Calibration

Internal Standards	R.T.	QIon	Response	Conc	Units	Dev(Min)
1) 1,4-Dichlorobenzene-d4	7.53	152	16252	5.00	ng	0.00
6) Naphthalene-d8	10.31	136	63011	5.00	ng	0.00
12) Acenaphthene-d10	14.20	164	35819	5.00	ng	0.00
18) Phenanthrene-d10	16.94	188	90288	5.00	ng	0.00
24) Chrysene-d12	21.15	240	73005	5.00	ng	0.00
30) Perylene-d12	23.29	264	58742	5.00	ng	-0.01
System Monitoring Compounds						
4) 2-Fluorophenol	5.11	112	17476	5.53	ng	-0.01
5) Phenol-d6	6.71	99	12991	3.34	ng	0.00
7) Nitrobenzene-d5	8.69	82	35270	9.88	ng	0.00
13) 2,4,6-Tribromophenol	15.69	330	21886	12.42	ng	0.00
14) 2-Fluorobiphenyl	12.81	172	113574	9.59	ng	0.00
26) Terphenyl-d14	19.59	244	111302	11.06	ng	0.00

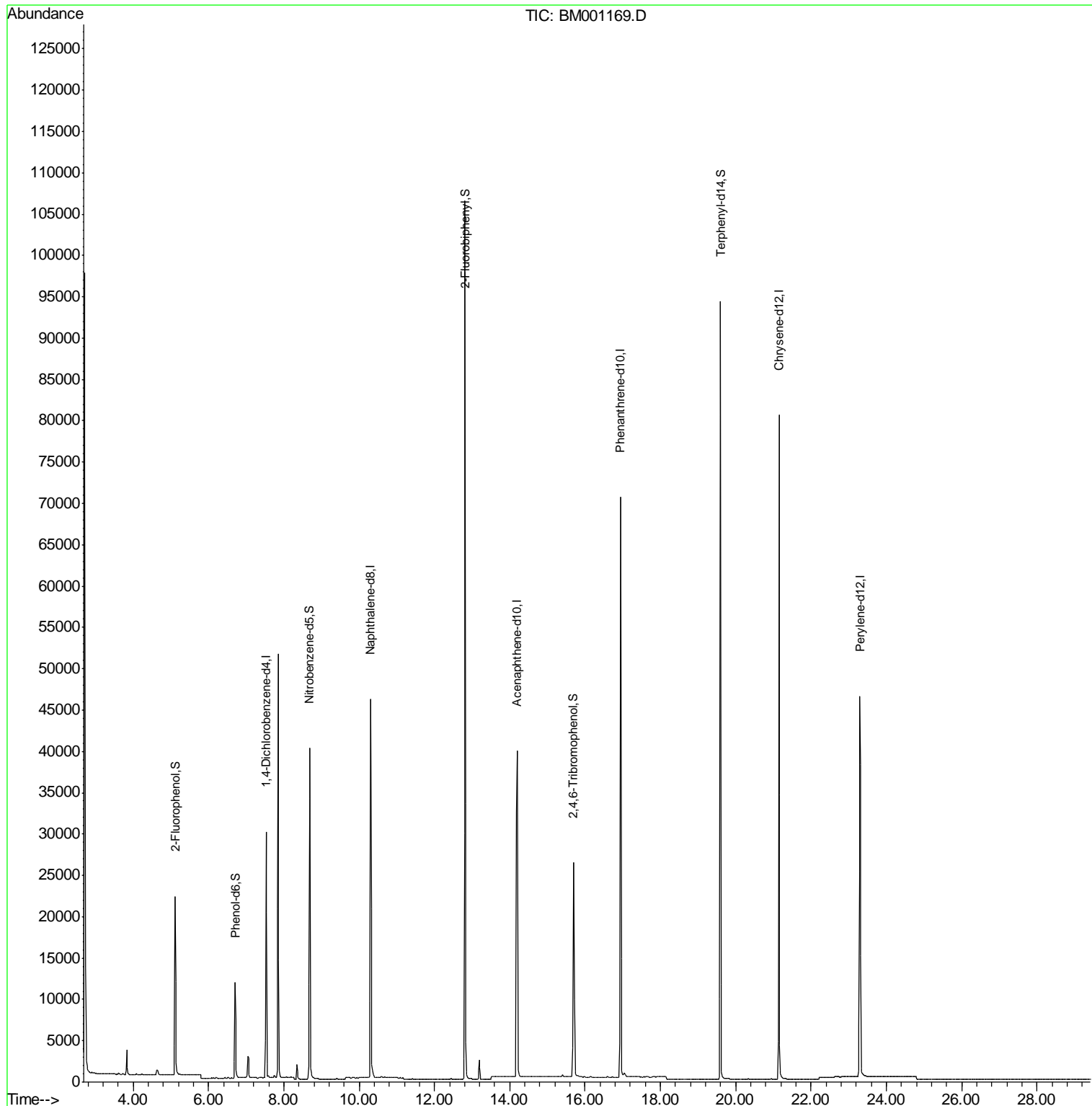
Target Compounds Qvalue

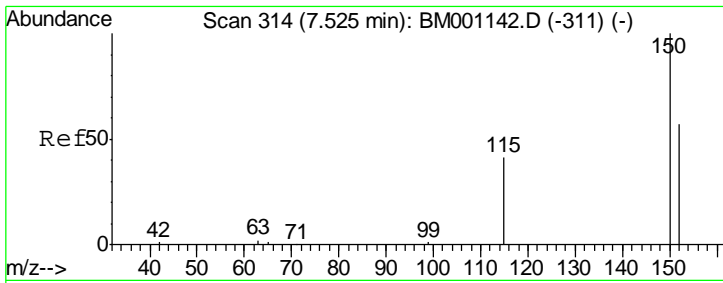
(#) = qualifier out of range (m) = manual integration (+) = signals summed

Data Path : Z:\HPCHEM1\BNA M\DATA\BM050115\
 Data File : BM001169.D
 Acq On : 02 May 2015 15:14
 Operator : TP/IZ
 Sample : G2057-10
 Misc :
 ALS Vial : 29 Sample Multiplier: 1

Instrument :
 BNA_M
 ClientSampleId :
 FB-042815

Quant Time: May 04 17:35:03 2015
 Quant Method : Z:\HPCHEM1\BNA M\METHODS\SIMPAH-BM050115.M
 Quant Title : ASP BNA STANDARDS FOR 5 POINT CALIBRATION
 QLast Update : Mon May 04 16:48:07 2015
 Response via : Initial Calibration



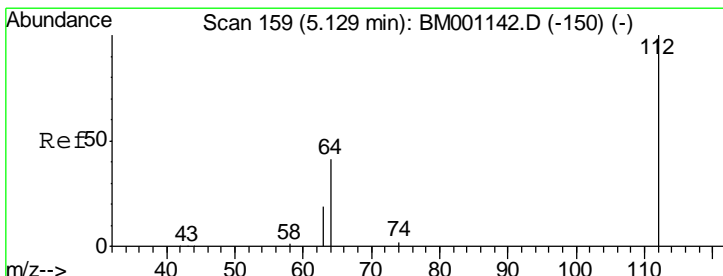
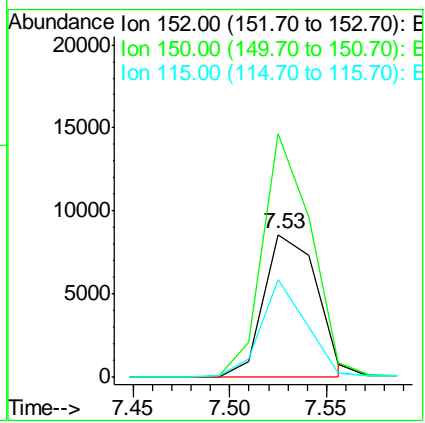
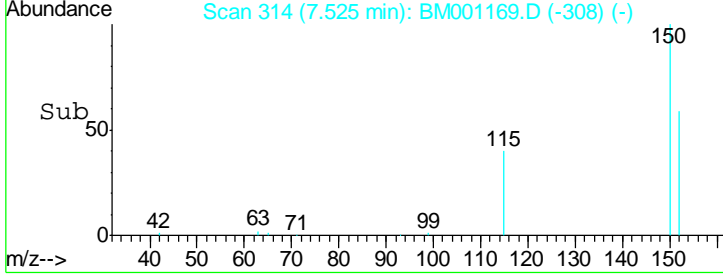
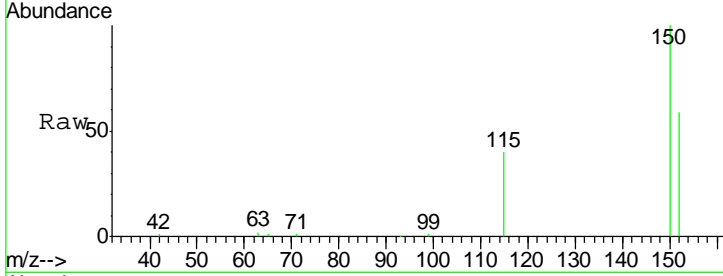


#1
 1,4-Dichlorobenzene-d4
 Concen: 5.00 ng
 RT: 7.53 min Scan# 314
 Delta R.T. 0.00 min
 Lab File: BM001169.D
 Acq: 02 May 2015 15:14

Instrument :
 BNA_M
ClientSampled :
 FB-042815

Tot Ion:152 Resp: 16252

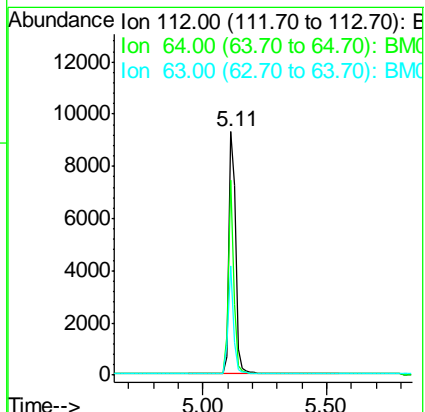
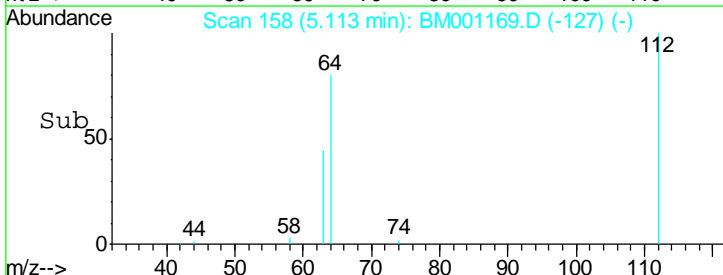
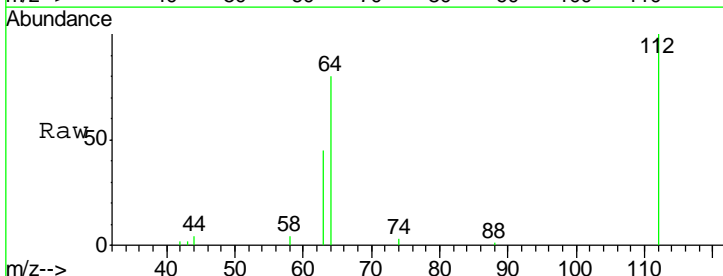
Ion	Ratio	Lower	Upper
152	100		
150	170.4	140.1	210.1
115	68.8	57.8	86.6

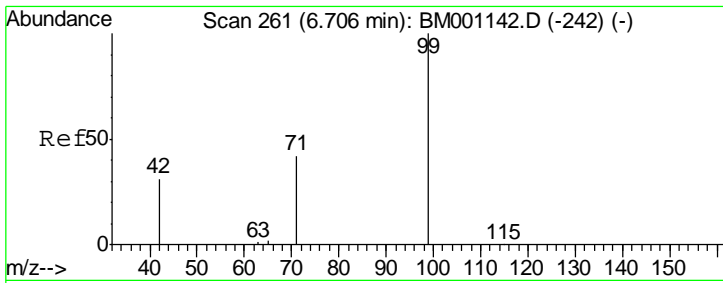


#4
 2-Fluorophenol
 Concen: 5.53 ng
 RT: 5.11 min Scan# 158
 Delta R.T. -0.01 min
 Lab File: BM001169.D
 Acq: 02 May 2015 15:14

Tgt Ion:112 Resp: 17476

Ion	Ratio	Lower	Upper
112	100		
64	64.8	52.6	79.0
63	36.1	29.5	44.3

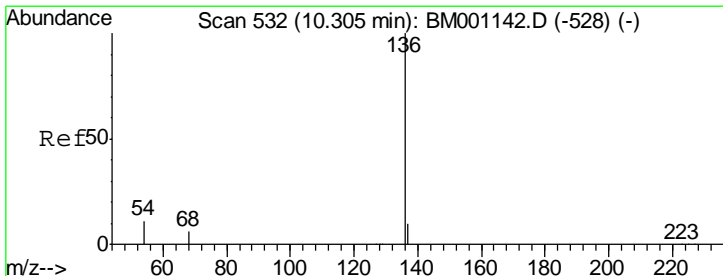
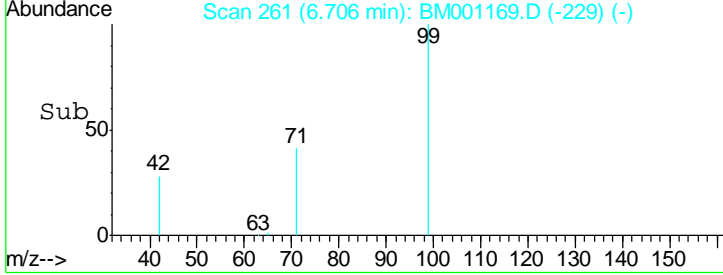
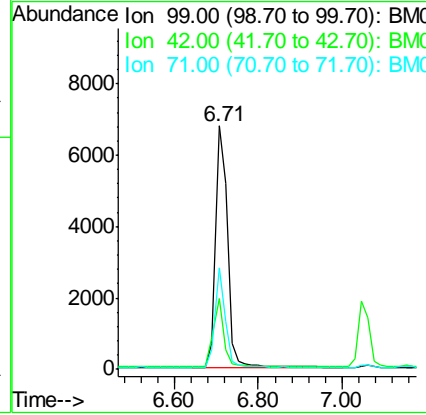
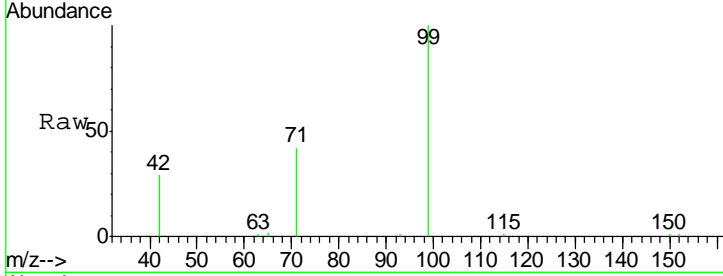




#5
 Phenol-d6
 Concen: 3.34 ng
 RT: 6.71 min Scan# 261
 Delta R.T. 0.00 min
 Lab File: BM001169.D
 Acq: 02 May 2015 15:14

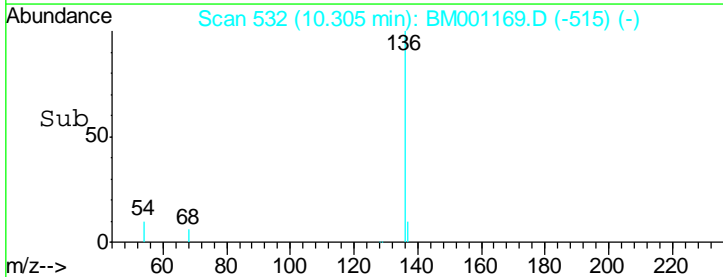
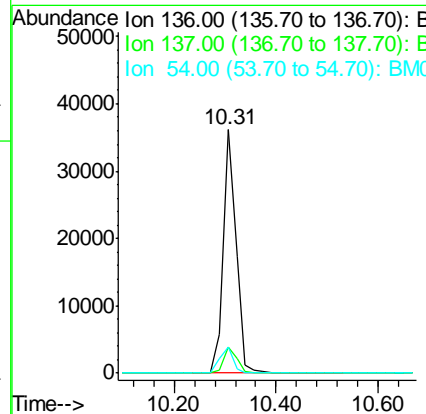
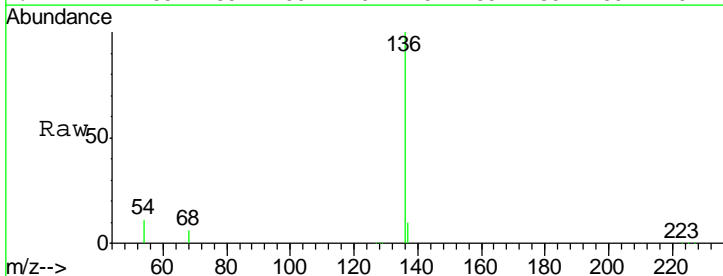
Instrument :
 BNA_M
ClientSampled :
 FB-042815

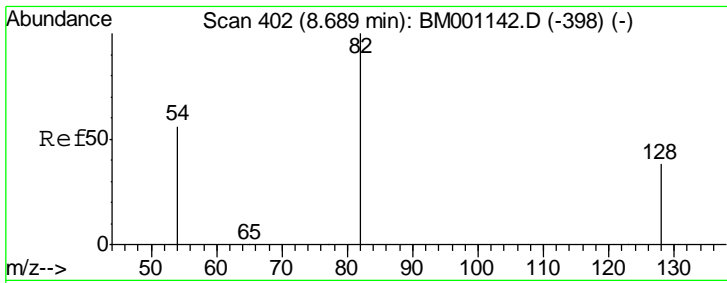
Tgt Ion	Resp	Lower	Upper
99	12991		
42	24.1	20.9	31.3
71	35.6	28.5	42.7



#6
 Naphthalene-d8
 Concen: 5.00 ng
 RT: 10.31 min Scan# 532
 Delta R.T. 0.00 min
 Lab File: BM001169.D
 Acq: 02 May 2015 15:14

Tgt Ion	Resp	Lower	Upper
136	63011		
137	10.5	8.2	12.4
54	10.6	9.0	13.4

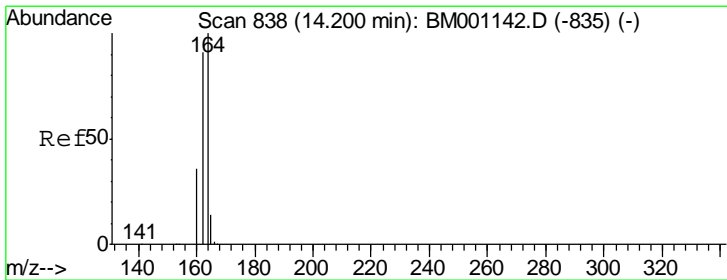
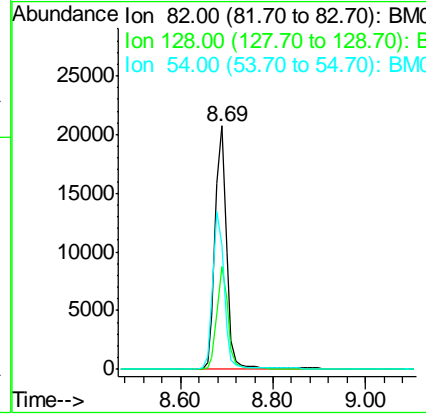
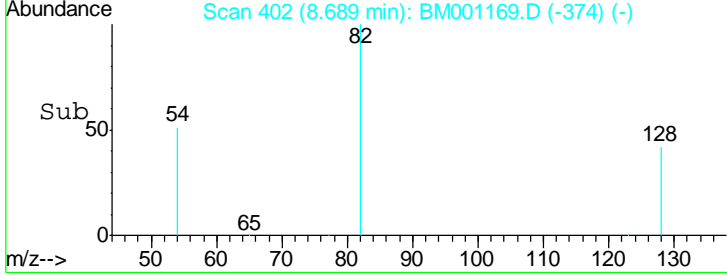
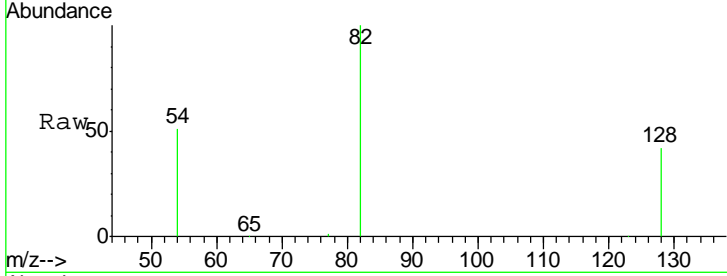




#7
 Nitrobenzene-d5
 Concen: 9.88 ng
 RT: 8.69 min Scan# 402
 Delta R.T. 0.00 min
 Lab File: BM001169.D
 Acq: 02 May 2015 15:14

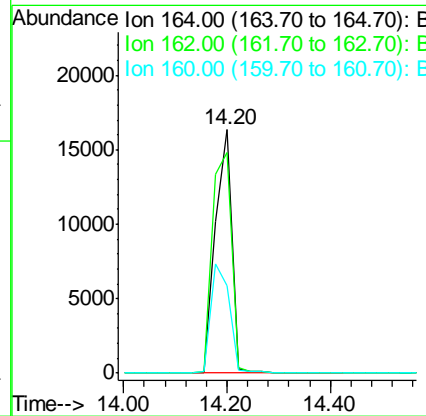
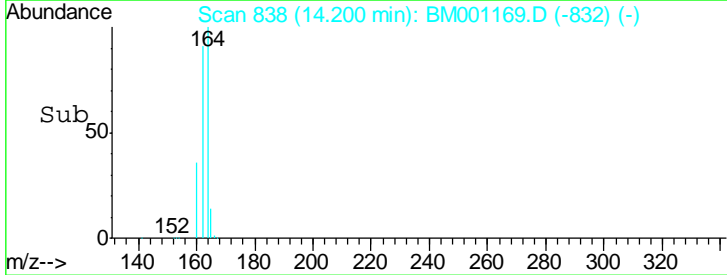
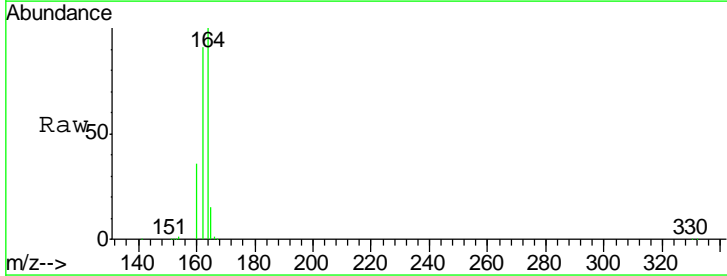
Instrument :
 BNA_M
ClientSampled :
 FB-042815

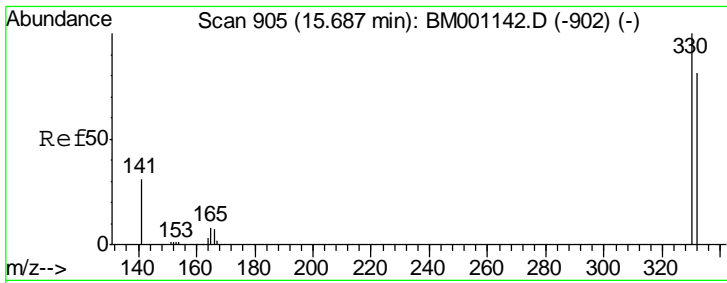
Tgt Ion	Resp	Lower	Upper
82	35270		
128	42.3	31.9	47.9
54	51.3	46.2	69.2



#12
 Acenaphthene-d10
 Concen: 5.00 ng
 RT: 14.20 min Scan# 838
 Delta R.T. 0.00 min
 Lab File: BM001169.D
 Acq: 02 May 2015 15:14

Tgt Ion	Resp	Lower	Upper
164	35819		
162	90.6	72.7	109.1
160	35.8	28.7	43.1

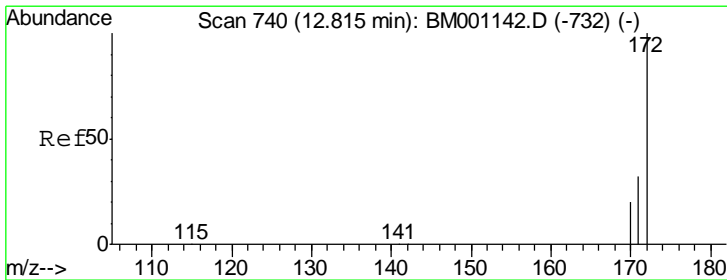
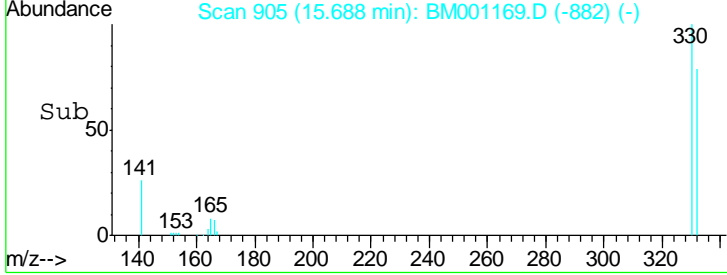
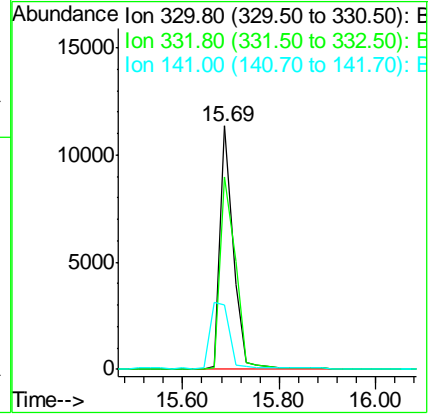
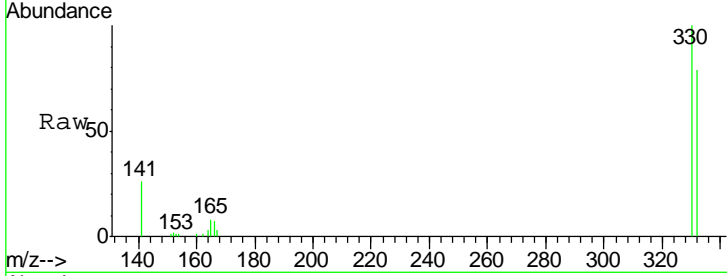




#13
 2,4,6-Tribromophenol
 Concen: 12.42 ng
 RT: 15.69 min Scan# 905
 Delta R.T. 0.00 min
 Lab File: BM001169.D
 Acq: 02 May 2015 15:14

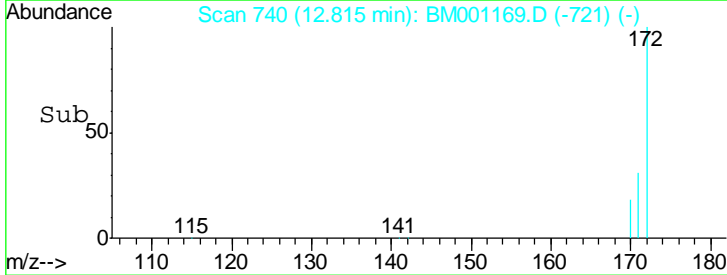
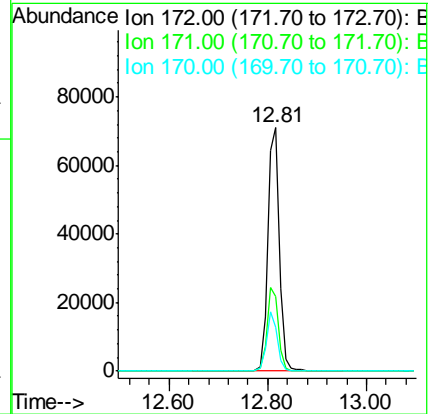
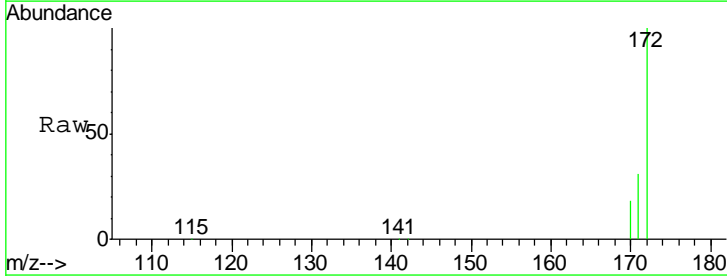
Instrument :
 BNA_M
 ClientSampleId :
 FB-042815

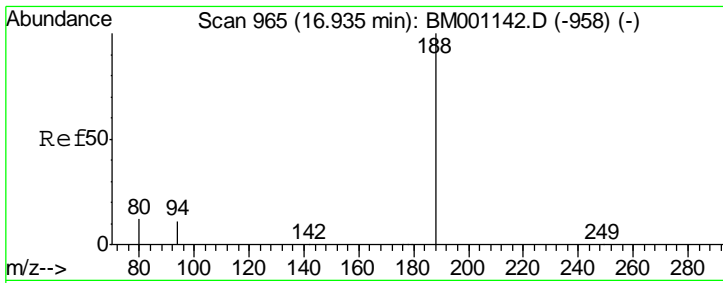
Tgt Ion	Resp	Lower	Upper
330	100		
332	91.9	74.5	111.7
141	0.0	21.0	31.4#



#14
 2-Fluorobiphenyl
 Concen: 9.59 ng
 RT: 12.81 min Scan# 740
 Delta R.T. 0.00 min
 Lab File: BM001169.D
 Acq: 02 May 2015 15:14

Tgt Ion	Resp	Lower	Upper
172	100		
171	30.7	25.8	38.6
170	18.1	16.1	24.1

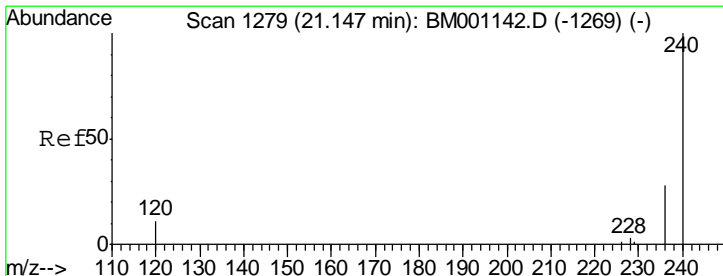
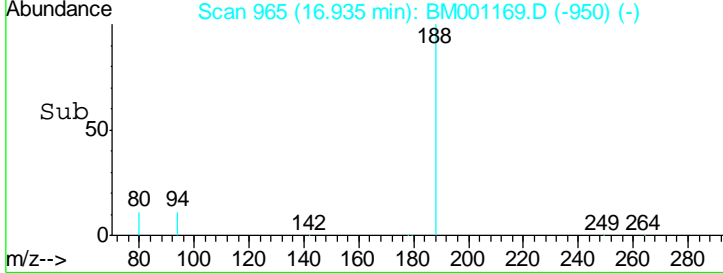
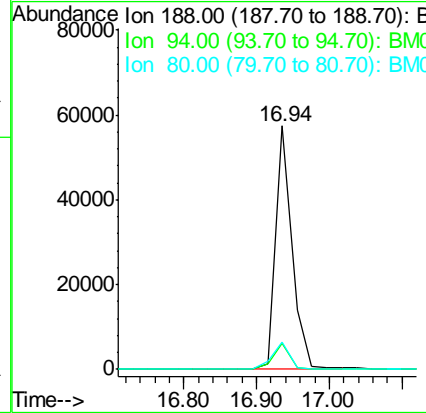
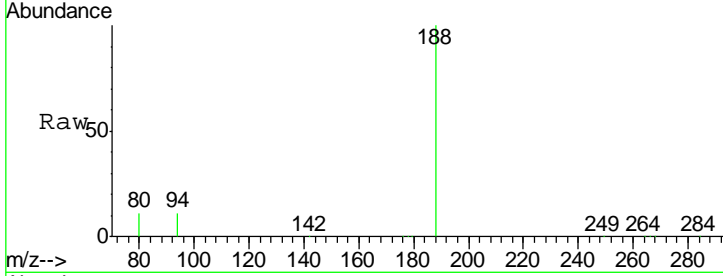




#18
 Phenanthrene-d10
 Concen: 5.00 ng
 RT: 16.94 min Scan# 965
 Delta R.T. 0.00 min
 Lab File: BM001169.D
 Acq: 02 May 2015 15:14

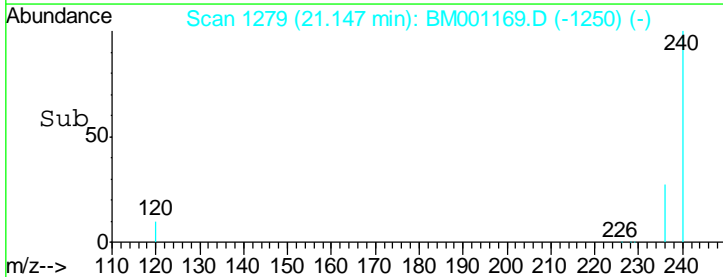
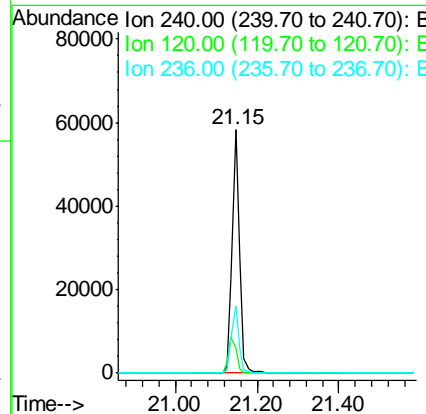
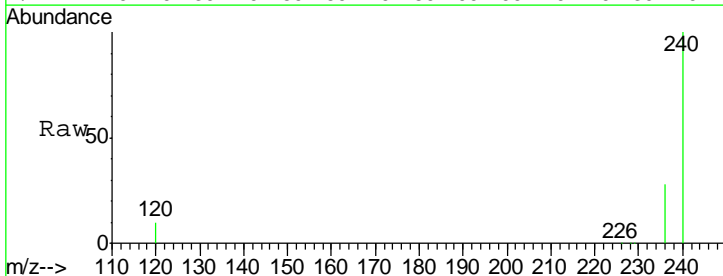
Instrument :
 BNA_M
ClientSampled :
 FB-042815

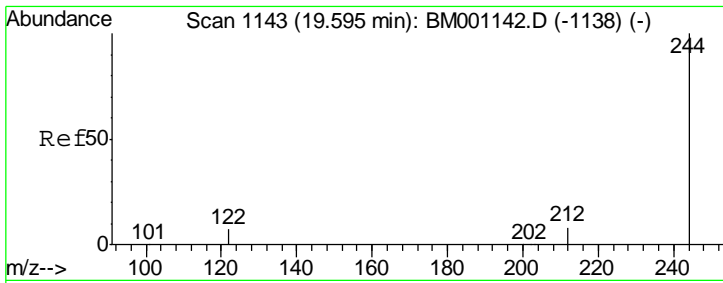
Tgt Ion	Resp	Lower	Upper
188	90288		
94	10.8	9.3	13.9
80	11.2	9.8	14.6



#24
 Chrysene-d12
 Concen: 5.00 ng
 RT: 21.15 min Scan# 1279
 Delta R.T. 0.00 min
 Lab File: BM001169.D
 Acq: 02 May 2015 15:14

Tgt Ion	Resp	Lower	Upper
240	73005		
120	10.2	9.2	13.8
236	27.6	22.4	33.6



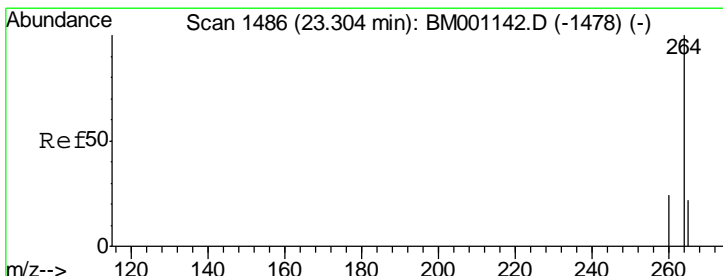
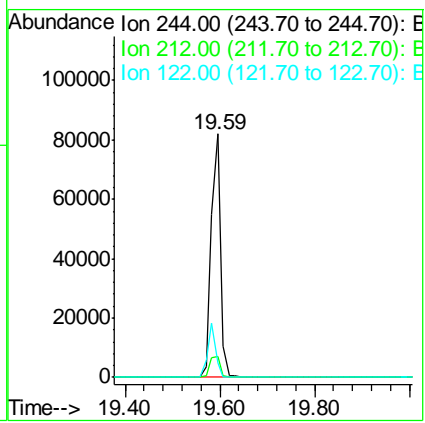
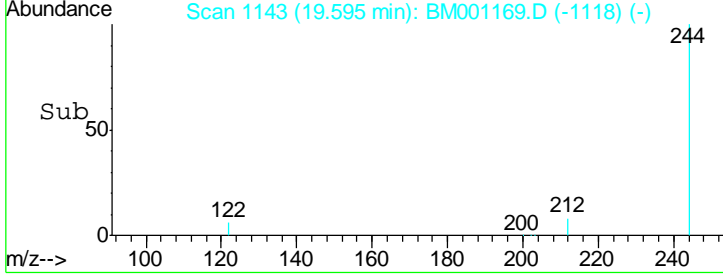
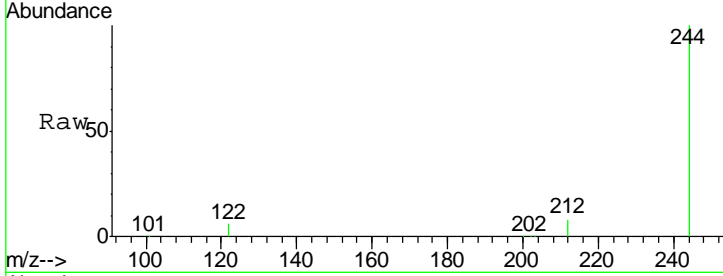


#26
 Terphenyl-d14
 Concen: 11.06 ng
 RT: 19.59 min Scan# 1143
 Delta R.T. 0.00 min
 Lab File: BM001169.D
 Acq: 02 May 2015 15:14

Instrument :
 BNA_M
 ClientSampled :
 FB-042815

Tgt Ion: 244 Resp: 111302

Ion	Ratio	Lower	Upper
244	100		
212	8.4	7.1	10.7
122	6.0	6.2	9.4



#30
 Perylene-d12
 Concen: 5.00 ng
 RT: 23.29 min Scan# 1485
 Delta R.T. -0.01 min
 Lab File: BM001169.D
 Acq: 02 May 2015 15:14

Tgt Ion: 264 Resp: 58742

Ion	Ratio	Lower	Upper
264	100		
260	25.8	18.9	28.3
265	20.7	18.1	27.1

