

Data Path : Z:\HPCHEM1\BNA_M\DATA\BM050118\
 Data File : BM014895.D
 Acq On : 01 May 2018 20:54
 Operator : SJ/JU
 Sample : J2636-02
 Misc :
 ALS Vial : 9 Sample Multiplier: 1

Instrument :
 BNA_M
 ClientSampleId :
 F1C01

Integration Parameters: LSCINT.P

Integrator: RTE
 Smoothing : OFF Filtering: 5
 Sampling : 1 Min Area: 1 % of largest Peak
 Start Thrs: 0.2 Max Peaks: 100
 Stop Thrs : 0 Peak Location: TOP

If leading or trailing edge < 100 prefer < Baseline drop else tangent >
 Peak separation: 5

Method : Z:\HPCHEM1\BNA_M\METHODS\SOM-EPA-BM041918.M
 Title : SVOA CALIBRATION

Signal : TIC

peak #	R.T. min	first scan	max scan	last scan	PK TY	peak height	corr. area	corr. % max.	% of total
1	3.340	4	9	25	rVB	972723	1392725	15.62%	1.518%
2	3.640	56	60	72	rVB	136302	206578	2.32%	0.225%
3	7.622	730	737	746	rBV	477436	777312	8.72%	0.847%
4	7.798	760	767	777	rBV	1564327	2497892	28.01%	2.722%
5	8.016	796	804	812	rBV	1706513	2771368	31.08%	3.020%
6	8.498	878	886	897	rBV	1503466	2473597	27.74%	2.695%
7	9.192	996	1004	1018	rBV	1289831	2112494	23.69%	2.302%
8	9.681	1079	1087	1103	rBV	1884483	3214853	36.06%	3.503%
9	10.410	1203	1211	1221	rBV	1501431	2539544	28.48%	2.767%
10	10.945	1294	1302	1315	rBV	2193124	3686428	41.34%	4.017%
11	11.339	1361	1369	1383	rBV	2038759	3482545	39.06%	3.795%
12	14.492	1898	1905	1912	rBV	3967609	5388357	60.43%	5.871%
13	14.804	1950	1958	1972	rBV	4384398	6566514	73.65%	7.155%
14	15.104	2002	2009	2016	rBV2	2731759	4196918	47.07%	4.573%
15	15.257	2030	2035	2050	rBV	304105	551220	6.18%	0.601%
16	16.080	2168	2175	2181	rBV	5399062	7882066	88.40%	8.589%
17	16.180	2186	2192	2203	rVB	1734124	2339972	26.24%	2.550%
18	16.316	2210	2215	2220	rVB	63476	91545	1.03%	0.100%
19	17.815	2463	2470	2480	rBV	3231979	4715369	52.88%	5.138%
20	17.915	2480	2487	2503	rVB	5798617	8264054	92.68%	9.005%
21	20.039	2844	2848	2854	rBV2	55736	91023	1.02%	0.099%
22	20.151	2861	2867	2875	rBV	6563328	8916297	100.00%	9.715%
23	21.903	3160	3165	3172	rBV	3707173	4856605	54.47%	5.292%
24	24.227	3552	3560	3571	rVB	3883877	8257631	92.61%	8.998%
25	24.386	3580	3587	3598	rVB2	2167066	4501500	50.49%	4.905%

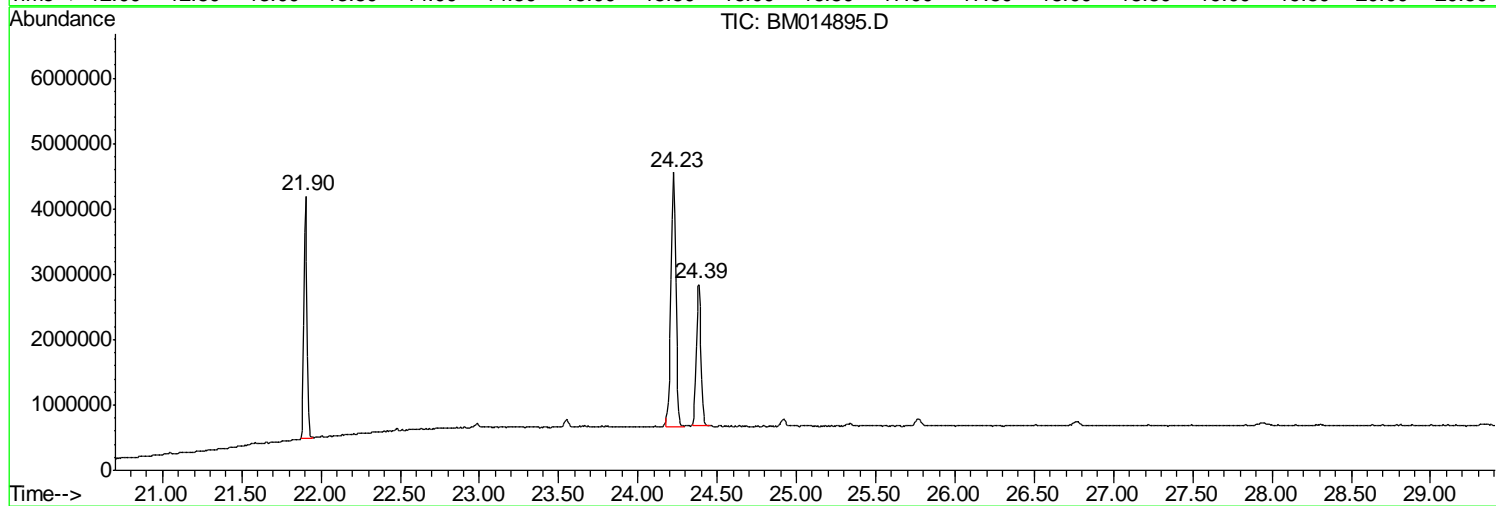
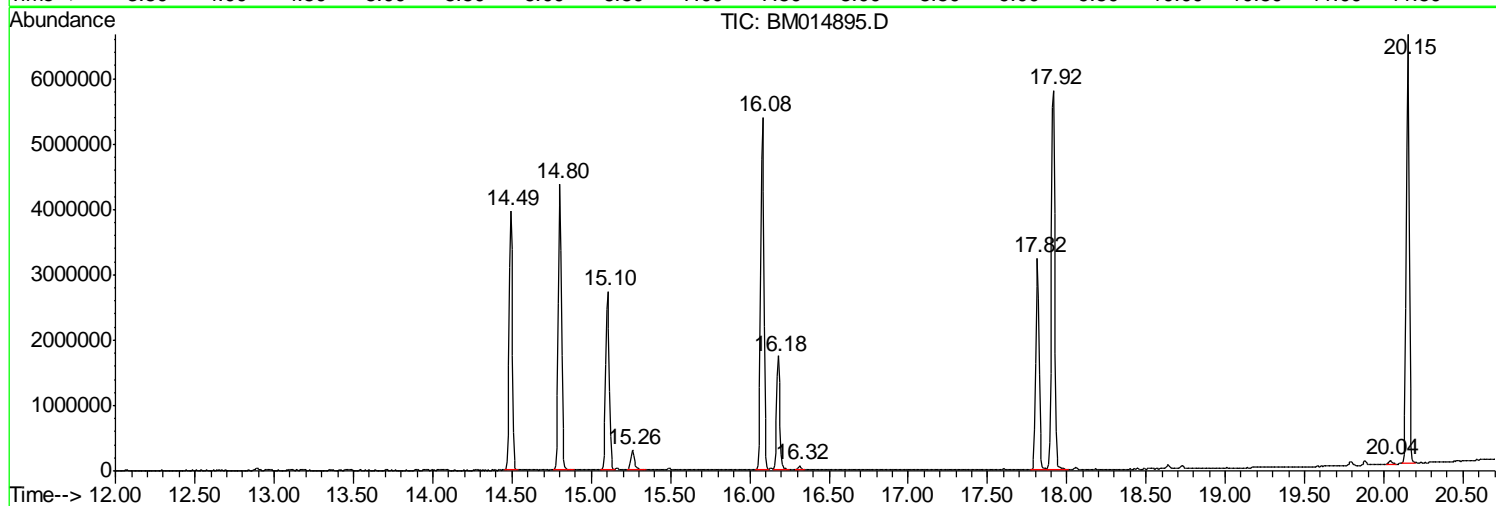
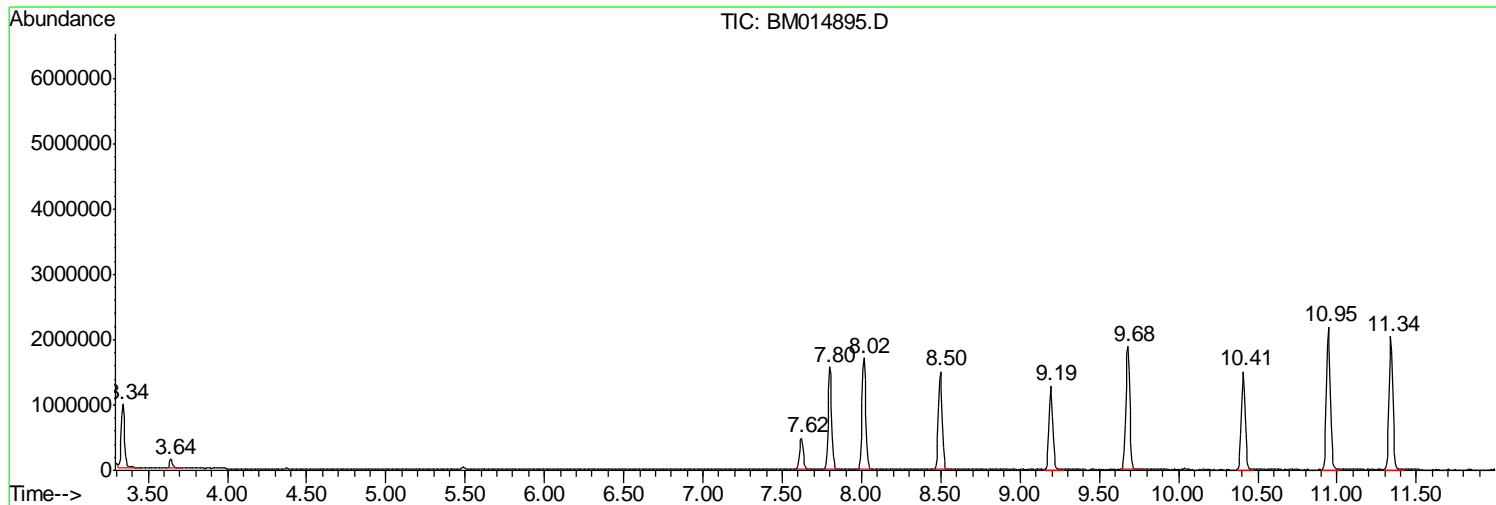
Sum of corrected areas: 91774407

Data Path : Z:\HPCHEM1\BNA_M\DATA\BM050118\
Data File : BM014895.D
Acq On : 01 May 2018 20:54
Operator : SJ/JU
Sample : J2636-02
Misc :
ALS Vial : 9 Sample Multiplier: 1

Instrument :
BNA_M
ClientSampled :
F1C01

Quant Method : Z:\HPCHEM1\BNA_M\METHODS\SOM-EPA-BM041918.M
Quant Title : SVOA CALIBRATION

TIC Library : C:\DATABASE\NIST11.L
TIC Integration Parameters: LSCINT.P



Data Path : Z:\HPCHEM1\BNA_M\DATA\BM050118\
 Data File : BM014895.D
 Acq On : 01 May 2018 20:54
 Operator : SJ/JU
 Sample : J2636-02
 Misc :
 ALS Vial : 9 Sample Multiplier: 1

Instrument :
 BNA_M
 ClientSampled :
 F1C01

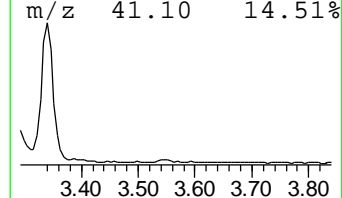
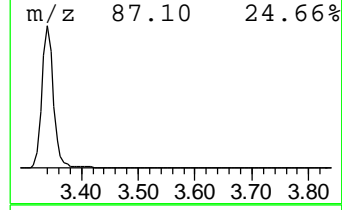
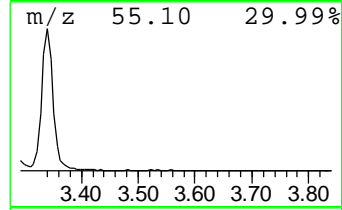
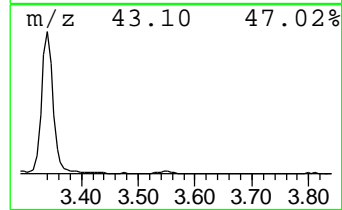
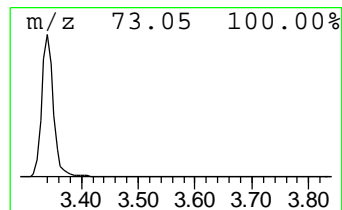
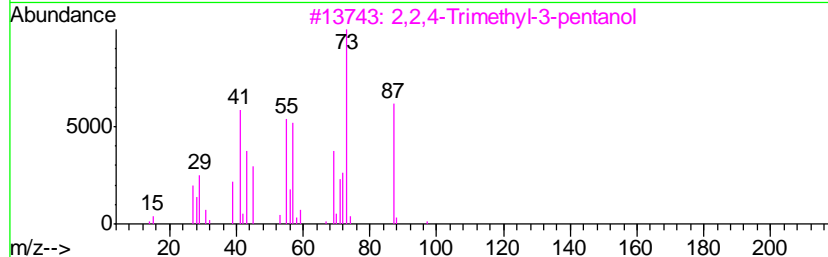
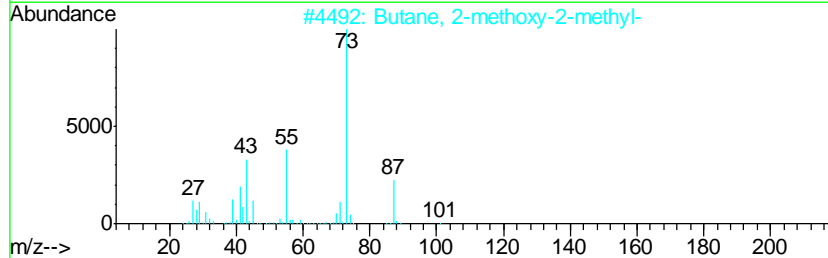
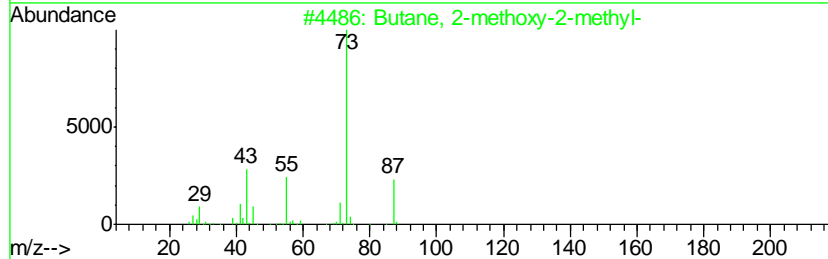
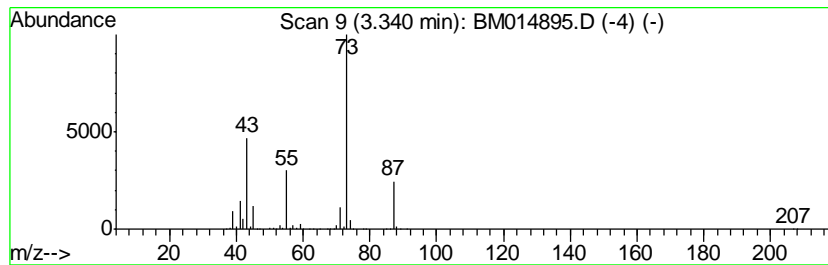
Quant Method : Z:\HPCHEM1\BNA_M\METHODS\SOM-EPA-BM041918.M
 Quant Title : SVOA CALIBRATION

TIC Library : C:\DATABASE\NIST11.L
 TIC Integration Parameters: LSCINT.P

 Peak Number 1 Butane, 2-methoxy-2-methyl- Concentration Rank 1

R.T.	EstConc	Area	Relative to ISTD	R.T.
3.34	11.26 ng/ul	1392730	1,4-Dichlorobenzene-d4	8.50

Hit#	of	Tentative ID	MW	MolForm	CAS#	Qual
1	5	Butane, 2-methoxy-2-methyl-	102	C6H14O	000994-05-8	83
2		Butane, 2-methoxy-2-methyl-	102	C6H14O	000994-05-8	78
3		2,2,4-Trimethyl-3-pentanol	130	C8H18O	005162-48-1	40
4		2,2,4-Trimethyl-3-pentanol	130	C8H18O	005162-48-1	40
5		1,3-Dioxolane, 2-methyl-	88	C4H8O2	000497-26-7	23



Data Path : Z:\HPCHEM1\BNA_M\DATA\BM050118\
Data File : BM014895.D
Acq On : 01 May 2018 20:54
Operator : SJ/JU
Sample : J2636-02
Misc :
ALS Vial : 9 Sample Multiplier: 1

Instrument :
BNA_M
ClientSampleId :
F1C01

Quant Method : Z:\HPCHEM1\BNA_M\METHODS\SOM-EPA-BM041918.M
Quant Title : SVOA CALIBRATION

TIC Library : C:\DATABASE\NIST11.L
TIC Integration Parameters: LSCINT.P

TIC Top Hit name	RT	EstConc	Units	Response	--Internal Standard--			
					#	RT	Resp	Conc
Butane, 2-methoxy...	3.34	11.3	ng/ul	1392730	1	8.50	2473600	20.0