

Data Path : Z:\HPCHEM1\BNA_M\DATA\BM050118\
 Data File : BM014901.D
 Acq On : 02 May 2018 00:36
 Operator : SJ/JU
 Sample : J2638-12
 Misc :
 ALS Vial : 15 Sample Multiplier: 1

Instrument :
 BNA_M
 ClientSampleId :
 C0AA3

Integration Parameters: LSCINT.P

Integrator: RTE
 Smoothing : OFF Filtering: 5
 Sampling : 1 Min Area: 1 % of largest Peak
 Start Thrs: 0.2 Max Peaks: 100
 Stop Thrs : 0 Peak Location: TOP

If leading or trailing edge < 100 prefer < Baseline drop else tangent >
 Peak separation: 5

Method : Z:\HPCHEM1\BNA_M\METHODS\SOM-EPA-BM041918.M
 Title : SVOA CALIBRATION

Signal : TIC

peak #	R.T. min	first scan	max scan	last scan	PK TY	peak height	corr. area	corr. % max.	% of total
1	3.340	4	9	17	rVB	1173576	1672335	18.07%	1.727%
2	3.640	56	60	69	rVB	121006	180236	1.95%	0.186%
3	5.481	368	373	382	rBV	143847	218951	2.37%	0.226%
4	7.622	730	737	750	rBV2	439039	868155	9.38%	0.896%
5	7.798	760	767	779	rBV	1566193	2501246	27.03%	2.583%
6	8.016	797	804	815	rBV	1676818	2739093	29.60%	2.829%
7	8.498	878	886	898	rBV	1471739	2461920	26.60%	2.542%
8	9.192	997	1004	1015	rBV	1195852	1968075	21.27%	2.032%
9	9.681	1079	1087	1094	rBV	1869826	3227483	34.88%	3.333%
10	10.410	1201	1211	1223	rBV	1487660	2577460	27.85%	2.662%
11	10.945	1294	1302	1314	rBV	2192519	3682214	39.79%	3.802%
12	11.339	1361	1369	1377	rBV	2030885	3436894	37.14%	3.549%
13	14.492	1896	1905	1910	rBV	3979745	5475280	59.17%	5.654%
14	14.539	1910	1913	1918	rVB	243218	325530	3.52%	0.336%
15	14.804	1951	1958	1969	rBV	4443176	6692842	72.33%	6.911%
16	14.951	1978	1983	1991	rVB	130144	170281	1.84%	0.176%
17	15.104	2001	2009	2017	rBV2	2682921	4174454	45.11%	4.311%
18	15.257	2026	2035	2051	rBV	316235	561958	6.07%	0.580%
19	15.892	2138	2143	2147	rVB	202704	249208	2.69%	0.257%
20	16.080	2168	2175	2185	rBV	5420336	8017126	86.64%	8.279%
21	16.180	2185	2192	2203	rVV	1837188	2496111	26.97%	2.578%
22	16.315	2204	2215	2221	rVB3	69195	216222	2.34%	0.223%
23	16.739	2282	2287	2297	rBV	205046	333982	3.61%	0.345%
24	17.521	2416	2420	2425	rBV	114084	144471	1.56%	0.149%
25	17.815	2463	2470	2479	rBV	3326369	4830715	52.20%	4.988%
26	17.915	2480	2487	2495	rBV	5876379	8439101	91.20%	8.715%
27	18.639	2605	2610	2620	rBV	359523	532401	5.75%	0.550%
28	19.880	2817	2821	2831	rBV	213738	299301	3.23%	0.309%
29	20.151	2861	2867	2876	rBV	7122860	9253605	100.00%	9.556%
30	21.562	3103	3107	3114	rBV2	206350	328673	3.55%	0.339%
31	21.903	3160	3165	3172	rBV	3868923	5021245	54.26%	5.185%
32	24.221	3552	3559	3569	rVB	4340552	8929866	96.50%	9.221%
33	24.380	3580	3586	3601	rVB2	2296545	4811865	52.00%	4.969%

Data Path : Z:\HPCHEM1\BNA_M\DATA\BM050118\
Data File : BM014901.D
Acq On : 02 May 2018 00:36
Operator : SJ/JU
Sample : J2638-12
Misc :
ALS Vial : 15 Sample Multiplier: 1

Instrument :
BNA_M
ClientSampleId :
C0AA3

Integration Parameters: LSCINT.P
Integrator: RTE
Smoothing : OFF Filtering: 5
Sampling : 1 Min Area: 1 % of largest Peak
Start Thrs: 0.2 Max Peaks: 100
Stop Thrs : 0 Peak Location: TOP

If leading or trailing edge < 100 prefer < Baseline drop else tangent >
Peak separation: 5

Method : Z:\HPCHEM1\BNA_M\METHODS\SOM-EPA-BM041918.M
Title : SVOA CALIBRATION

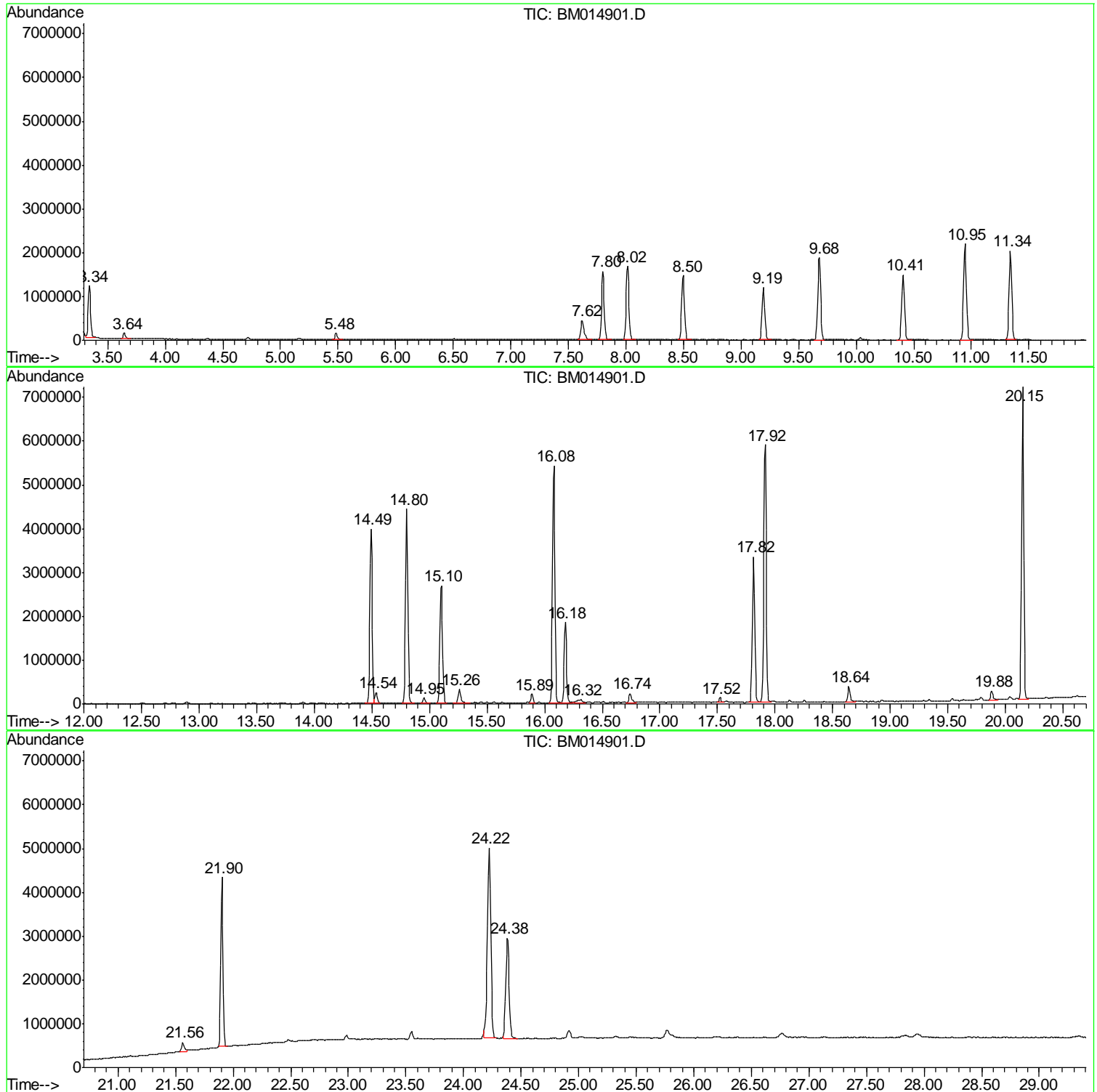
Sum of corrected areas: 96838299

Data Path : Z:\HPCHEM1\BNA_M\DATA\BM050118\
Data File : BM014901.D
Acq On : 02 May 2018 00:36
Operator : SJ/JU
Sample : J2638-12
Misc :
ALS Vial : 15 Sample Multiplier: 1

Instrument :
BNA_M
ClientSampleId :
C0AA3

Quant Method : Z:\HPCHEM1\BNA_M\METHODS\SOM-EPA-BM041918.M
Quant Title : SVOA CALIBRATION

TIC Library : C:\DATABASE\NIST11.L
TIC Integration Parameters: LSCINT.P



Data Path : Z:\HPCHEM1\BNA_M\DATA\BM050118\
 Data File : BM014901.D
 Acq On : 02 May 2018 00:36
 Operator : SJ/JU
 Sample : J2638-12
 Misc :
 ALS Vial : 15 Sample Multiplier: 1

Instrument :
 BNA_M
 ClientSampled :
 C0AA3

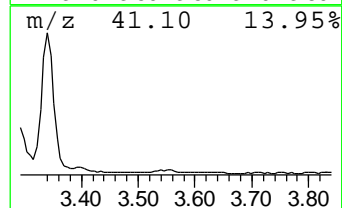
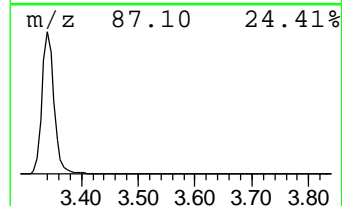
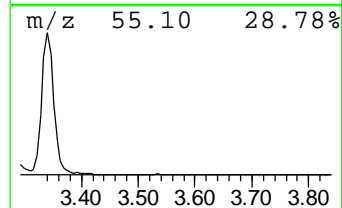
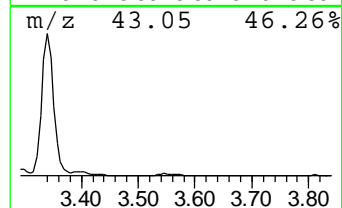
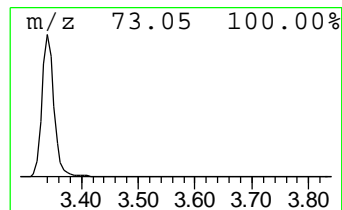
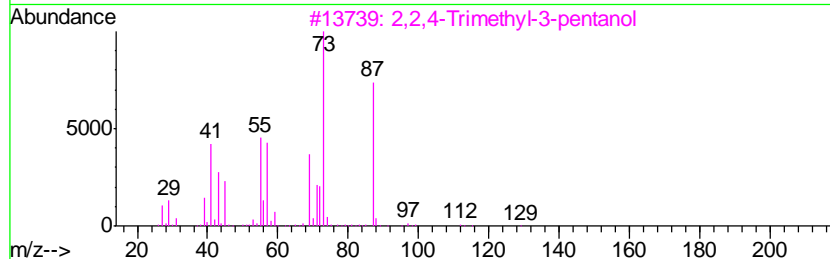
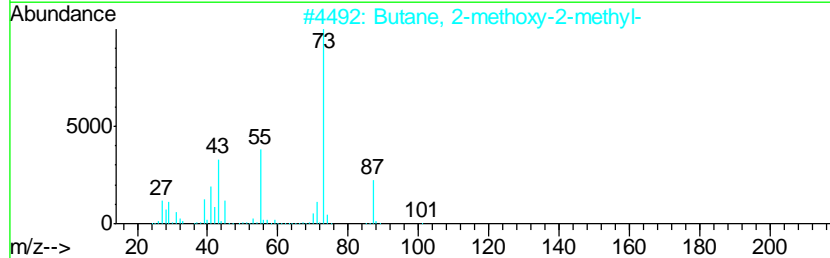
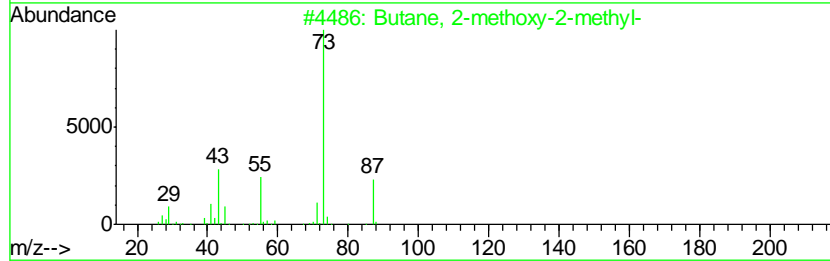
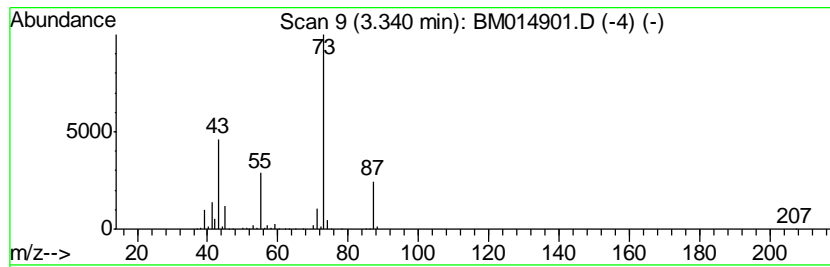
Quant Method : Z:\HPCHEM1\BNA_M\METHODS\SOM-EPA-BM041918.M
 Quant Title : SVOA CALIBRATION

TIC Library : C:\DATABASE\NIST11.L
 TIC Integration Parameters: LSCINT.P

 Peak Number 1 Butane, 2-methoxy-2-methyl- Concentration Rank 1

R.T.	EstConc	Area	Relative to ISTD	R.T.
3.34	13.59 ng/ul	1672340	1,4-Dichlorobenzene-d4	8.50

Hit#	of	Tentative ID	MW	MolForm	CAS#	Qual
1	5	Butane, 2-methoxy-2-methyl-	102	C6H14O	000994-05-8	83
2		Butane, 2-methoxy-2-methyl-	102	C6H14O	000994-05-8	78
3		2,2,4-Trimethyl-3-pentanol	130	C8H18O	005162-48-1	40
4		2,2,4-Trimethyl-3-pentanol	130	C8H18O	005162-48-1	40
5		1,3-Dioxolane, 2-methyl-	88	C4H8O2	000497-26-7	23



Data Path : Z:\HPCHEM1\BNA_M\DATA\BM050118\
 Data File : BM014901.D
 Acq On : 02 May 2018 00:36
 Operator : SJ/JU
 Sample : J2638-12
 Misc :
 ALS Vial : 15 Sample Multiplier: 1

Instrument :
 BNA_M
 ClientSampleID :
 C0AA3

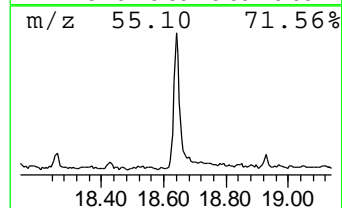
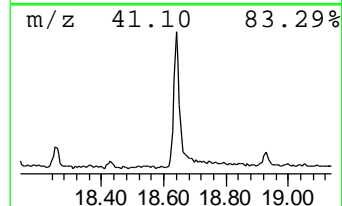
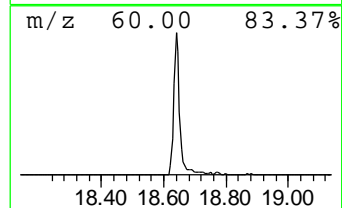
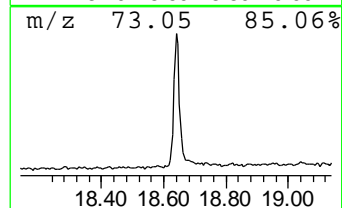
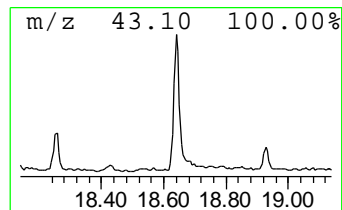
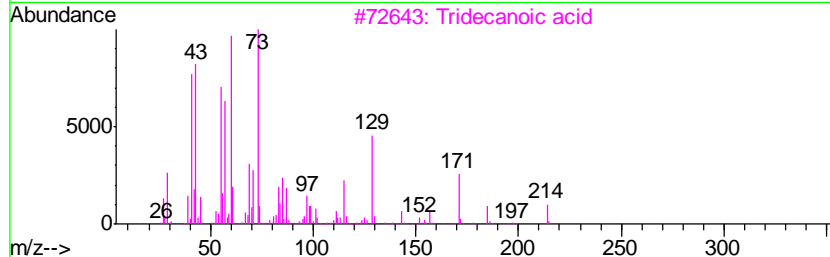
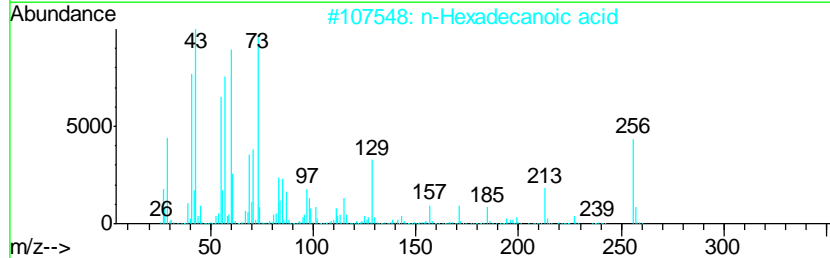
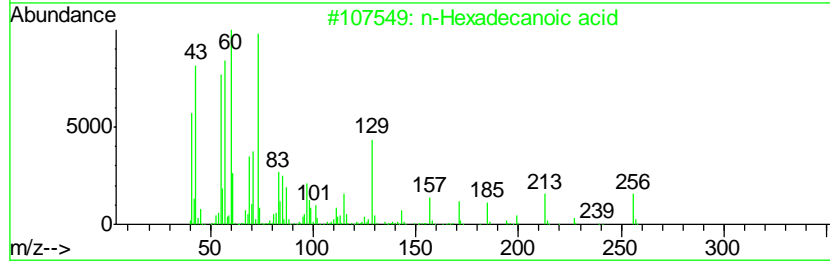
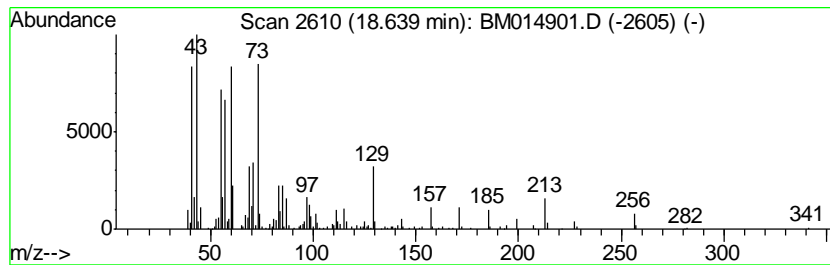
Quant Method : Z:\HPCHEM1\BNA_M\METHODS\SOM-EPA-BM041918.M
 Quant Title : SVOA CALIBRATION

TIC Library : C:\DATABASE\NIST11.L
 TIC Integration Parameters: LSCINT.P

 Peak Number 2 n-Hexadecanoic acid Concentration Rank 2

R.T.	EstConc	Area	Relative to ISTD	R.T.
18.64	2.20 ng/ul	532401	Phenanthrene-d10	17.82

Hit#	of	Tentative ID	MW	MolForm	CAS#	Qual
1	5	n-Hexadecanoic acid	256	C16H32O2	000057-10-3	99
2		n-Hexadecanoic acid	256	C16H32O2	000057-10-3	95
3		Tridecanoic acid	214	C13H26O2	000638-53-9	89
4		Pentadecanoic acid	242	C15H30O2	001002-84-2	87
5		Octadecanoic acid	284	C18H36O2	000057-11-4	87



Data Path : Z:\HPCHEM1\BNA_M\DATA\BM050118\
Data File : BM014901.D
Acq On : 02 May 2018 00:36
Operator : SJ/JU
Sample : J2638-12
Misc :
ALS Vial : 15 Sample Multiplier: 1

Instrument :
BNA_M
ClientSampleId :
C0AA3

Quant Method : Z:\HPCHEM1\BNA_M\METHODS\SOM-EPA-BM041918.M
Quant Title : SVOA CALIBRATION

TIC Library : C:\DATABASE\NIST11.L
TIC Integration Parameters: LSCINT.P

TIC Top Hit name	RT	EstConc	Units	Response	--Internal Standard--			
					#	RT	Resp	Conc
Butane, 2-methoxy...	3.34	13.6	ng/ul	1672340	1	8.50	2461920	20.0
n-Hexadecanoic acid	18.64	2.2	ng/ul	532401	4	17.82	4830720	20.0