

Data Path : Z:\SVOASRV\HPCHEM1\BNA M\DATA\BM050219\  
 Data File : BM020105.D  
 Acq On : 02 May 2019 17:09  
 Operator : JU/SJ  
 Sample : K2551-12DL 5X  
 Misc :  
 ALS Vial : 6 Sample Multiplier: 1

Instrument :  
 BNA\_M  
 ClientSampleId :

Quant Time: May 02 17:43:07 2019  
 Quant Method : Z:\SVOASRV\HPCHEM1\BNA M\METHODS\8270-BM043019.M  
 Quant Title : ASP BNA STANDARDS FOR 5 POINT CALIBRATION  
 QLast Update : Wed May 01 03:58:37 2019  
 Response via : Initial Calibration

Internal Standards	R.T.	QIon	Response	Conc	Units	Dev(Min)
1) 1,4-Dichlorobenzene-d4	7.79	152	124038	20.00	ng	0.00
21) Naphthalene-d8	10.58	136	484853	20.00	ng	0.00
39) Acenaphthene-d10	14.43	164	304175	20.00	ng	0.00
64) Phenanthrene-d10	17.17	188	744807	20.00	ng	0.00
76) Chrysene-d12	21.36	240	782410	20.00	ng	0.00
87) Perylene-d12	23.64	264	854338	20.00	ng	-0.01

## System Monitoring Compounds

5) 2-Fluorophenol	5.36	112	200046	26.36	ng	0.00
7) Phenol-d6	6.95	99	302598	29.19	ng	0.00
23) Nitrobenzene-d5	8.95	82	231047	18.81	ng	0.00
42) 2,4,6-Tribromophenol	15.92	330	137858	29.20	ng	0.00
45) 2-Fluorobiphenyl	13.05	172	504141	20.39	ng	0.00
79) Terphenyl-d14	19.80	244	942630	21.01	ng	0.00

## Target Compounds

						Qvalue
11) bis(2-Chloroethyl)ether	7.22	93	180016	22.193	ng	97
12) 1,3-Dichlorobenzene	7.67	146	214651	22.328	ng	97
13) 1,4-Dichlorobenzene	7.82	146	583792	60.114	ng	96
14) 1,2-Dichlorobenzene	8.14	146	580327	62.723	ng	98
18) Hexachloroethane	8.86	117	101202	24.993	ng	98
19) n-Nitroso-di-n-propylamine	8.59	70	202417	22.822	ng	96
24) Nitrobenzene	9.00	77	796893	62.583	ng	98
25) Isophorone	9.51	82	1065673	50.319	ng	99
26) 2-Nitrophenol	9.70	139	86805	22.581	ng	98
28) bis(2-Chloroethoxy)methane	10.00	93	254736	22.085	ng	100
30) 1,2,4-Trichlorobenzene	10.45	180	512853	51.647	ng	99
31) Naphthalene	10.63	128	570519	22.675	ng	99
36) 4-Chloro-3-methylphenol	11.86	107	261488	27.572	ng	95
43) 2,4,6-Trichlorophenol	12.92	196	220417	32.590	ng	99
44) 2,4,5-Trichlorophenol	12.92	196	229483	30.372	ng	98
47) 2-Chloronaphthalene	13.30	162	732552	36.646	ng	99
50) Dimethylphthalate	13.89	163	1543712	59.712	ng	99
51) 2,6-Dinitrotoluene	14.02	165	129210	23.730	ng	100
52) Acenaphthene	14.49	154	357409	19.482	ng	98
55) Dibenzofuran	14.83	168	426443	13.781	ng	100
57) 2,4-Dinitrotoluene	14.80	165	302145	40.837	ng	98
58) Fluorene	15.48	166	789276	31.057	ng	100
61) 4-Chlorophenyl-phenylether	15.47	204	610083	42.368	ng	96
62) 4-Nitroaniline	15.48	138	12545	2.249	ng	# 22
67) 4-Bromophenyl-phenylether	16.37	248	350094	38.332	ng	98
68) Hexachlorobenzene	16.47	284	166422	15.835	ng	97
71) Phenanthrene	17.22	178	1025108	24.933	ng	99
80) Butylbenzylphthalate	20.50	149	961200	50.318	ng	100
81) Benzo(a)anthracene	21.34	228	1542985	28.121	ng	100
83) Chrysene	21.34	228	1543843	29.012	ng	98
84) Bis(2-ethylhexyl)phthalate	21.27	149	2043884	68.952	ng	99
85) Di-n-octyl phthalate	22.16	149	555258	11.270	ng	99
86) Indeno(1,2,3-cd)pyrene	25.99	276	232459	3.672	ng	# 100
90) Benzo(a)pyrene	23.54	252	1039841	20.292	ng	99

Data Path : Z:\SVOASRV\HPCHEM1\BNA M\DATA\BM050219\  
 Data File : BM020105.D  
 Acq On : 02 May 2019 17:09  
 Operator : JU/SJ  
 Sample : K2551-12DL 5X  
 Misc :  
 ALS Vial : 6 Sample Multiplier: 1

Instrument :  
 BNA\_M  
 ClientSampleId :

Quant Time: May 02 17:43:07 2019  
 Quant Method : Z:\SVOASRV\HPCHEM1\BNA M\METHODS\8270-BM043019.M  
 Quant Title : ASP BNA STANDARDS FOR 5 POINT CALIBRATION  
 QLast Update : Wed May 01 03:58:37 2019  
 Response via : Initial Calibration

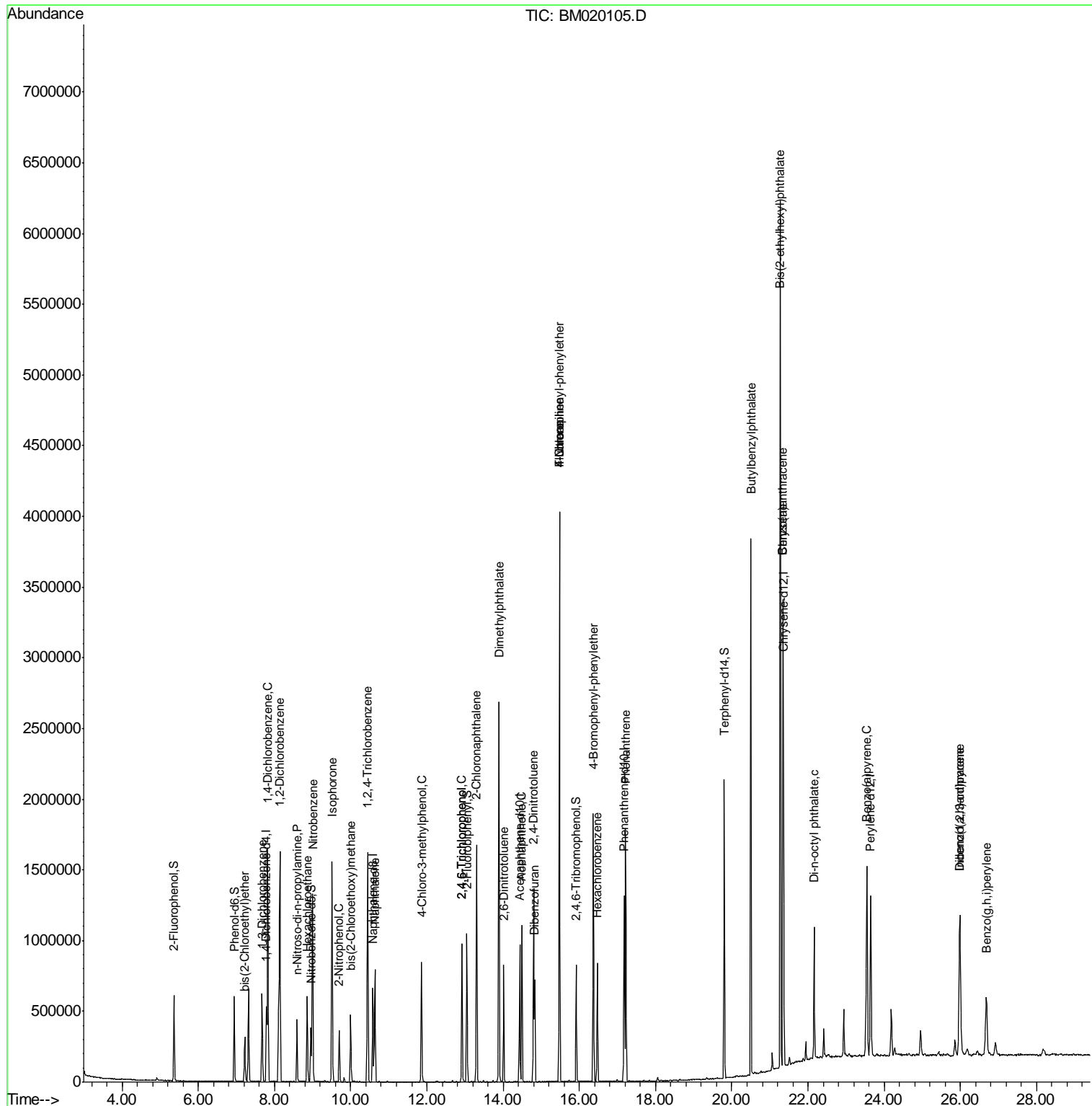
Internal Standards	R.T.	QIon	Response	Conc	Units	Dev(Min)
91) Dibenzo(a,h)anthracene	25.99	278	1040628	19.527	ng	99
92) Benzo(g,h,i)perylene	26.68	276	545761	10.787	ng	99

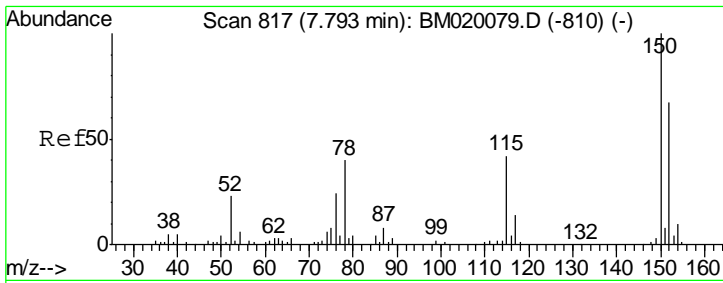
(#) = qualifier out of range (m) = manual integration (+) = signals summed

Data Path : Z:\SVOASRV\HPCHEM1\BNA M\DATA\BM050219\  
 Data File : BM020105.D  
 Acq On : 02 May 2019 17:09  
 Operator : JU/SJ  
 Sample : K2551-12DL 5X  
 Misc :  
 ALS Vial : 6 Sample Multiplier: 1

Instrument :  
 BNA\_M  
 Client Sampled :

Quant Time: May 02 17:43:07 2019  
 Quant Method : Z:\SVOASRV\HPCHEM1\BNA M\METHODS\8270-BM043019.M  
 Quant Title : ASP BNA STANDARDS FOR 5 POINT CALIBRATION  
 QLast Update : Wed May 01 03:58:37 2019  
 Response via : Initial Calibration

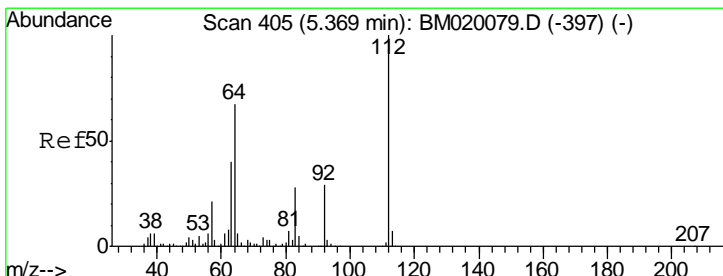
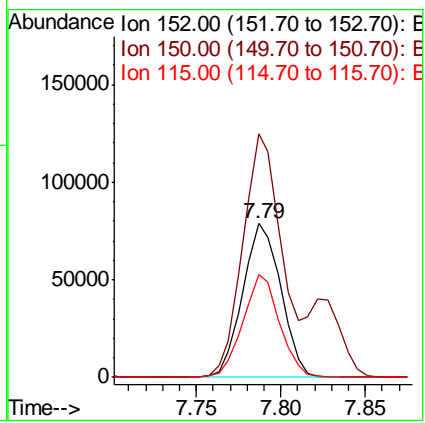
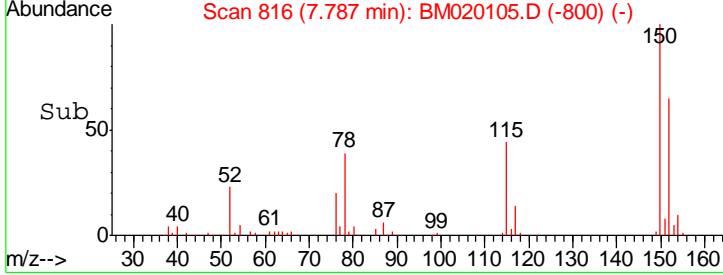
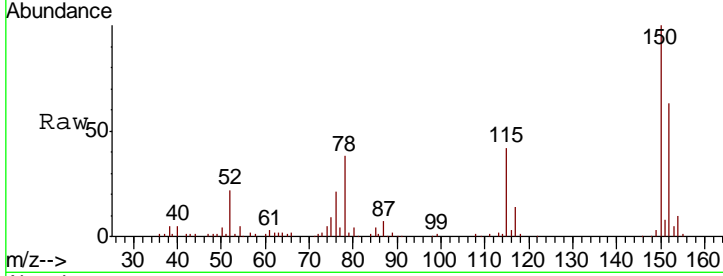




#1  
 1,4-Dichlorobenzene-d4  
 Concen: 20.000 ng  
 RT: 7.79 min Scan# 816  
 Delta R.T. -0.01 min  
 Lab File: BM020105.D  
 Acq: 02 May 2019 17:09

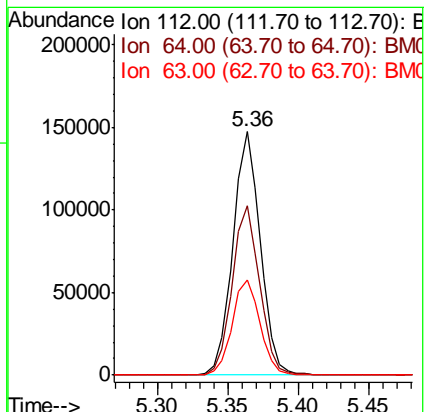
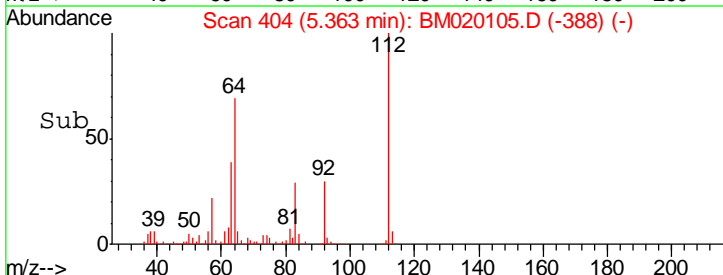
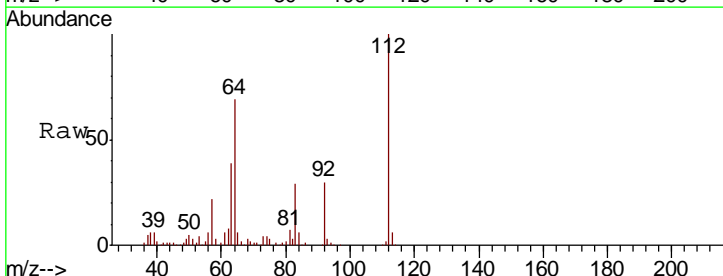
Instrument :  
 BNA\_M  
 ClientSampled :

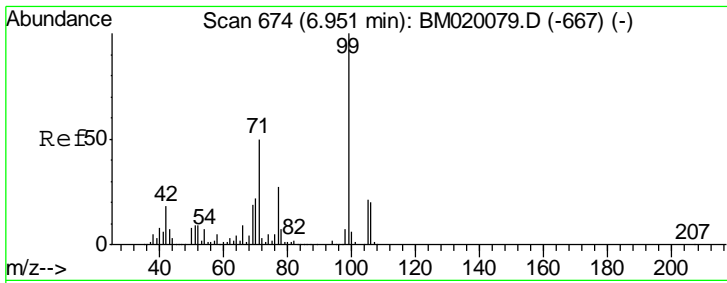
Tgt Ion	Resp	Lower	Upper
152	124038		
150	158.5	119.8	179.8
115	67.1	50.8	76.2



#5  
 2-Fluorophenol  
 Concen: 26.362 ng  
 RT: 5.36 min Scan# 404  
 Delta R.T. -0.01 min  
 Lab File: BM020105.D  
 Acq: 02 May 2019 17:09

Tgt Ion	Resp	Lower	Upper
112	200046		
64	69.4	53.8	80.6
63	38.9	32.3	48.5

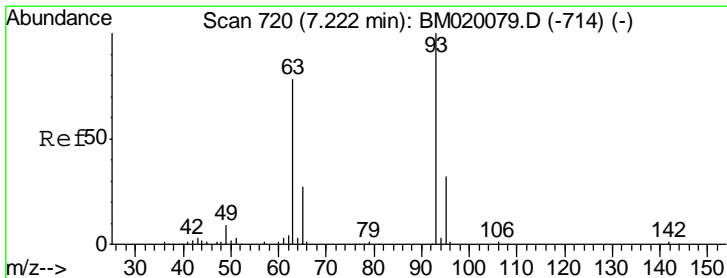
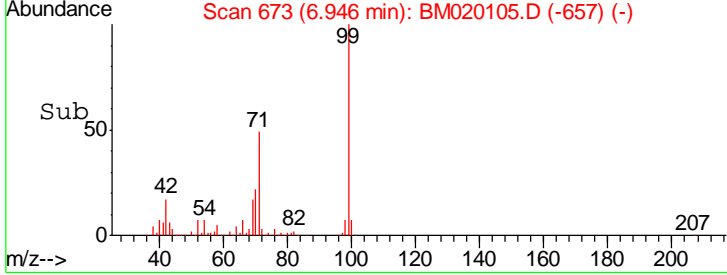
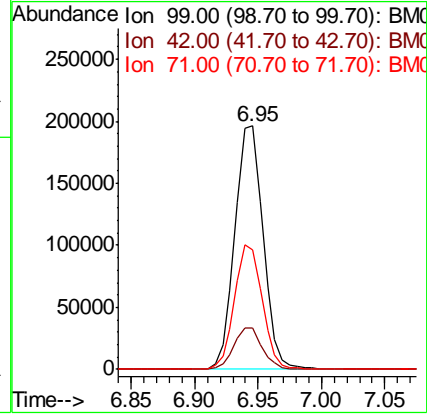
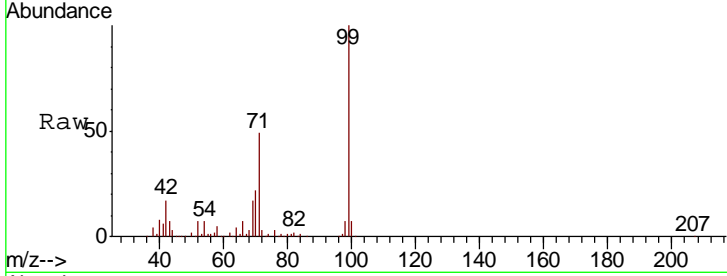




#7  
 Phenol-d6  
 Concen: 29.189 ng  
 RT: 6.95 min Scan# 673  
 Delta R.T. -0.01 min  
 Lab File: BM020105.D  
 Acq: 02 May 2019 17:09

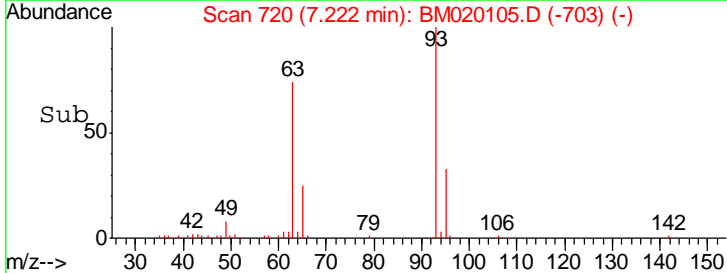
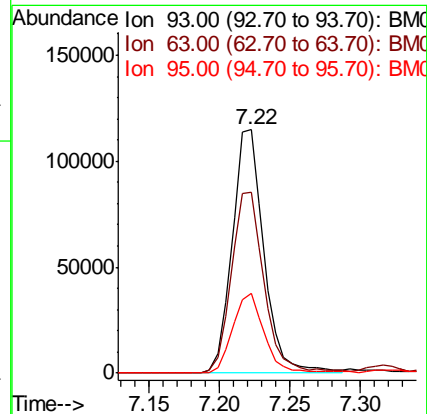
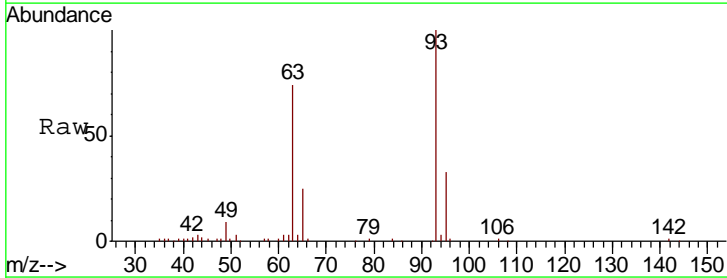
Instrument :  
 BNA\_M  
 ClientSampled :

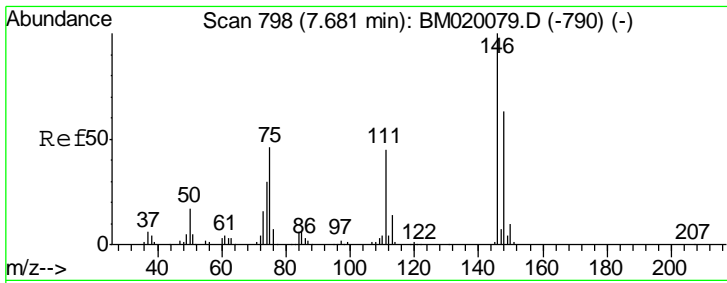
Tgt Ion	Resp	Lower	Upper
99	302598		
42	17.1	14.2	21.2
71	49.0	40.3	60.5



#11  
 bis(2-Chloroethyl)ether  
 Concen: 22.193 ng  
 RT: 7.22 min Scan# 720  
 Delta R.T. 0.00 min  
 Lab File: BM020105.D  
 Acq: 02 May 2019 17:09

Tgt Ion	Resp	Lower	Upper
93	180016		
63	74.4	57.9	97.9
95	32.5	11.3	51.3

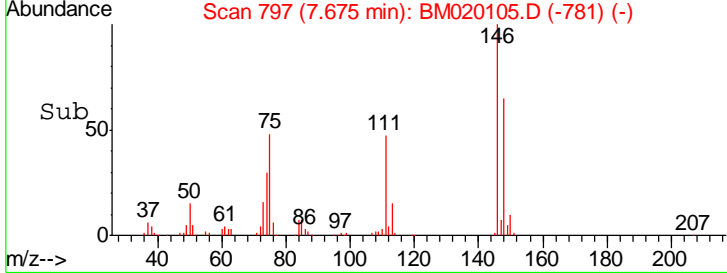
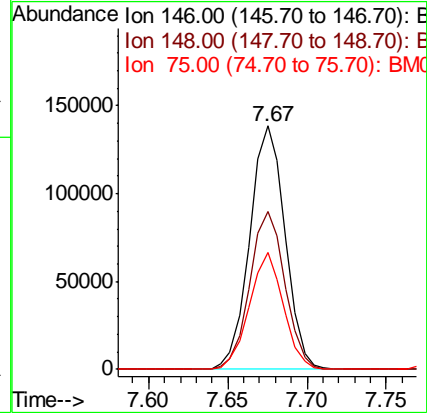
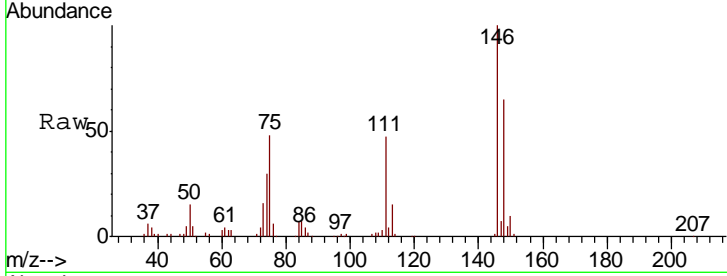




#12  
 1,3-Dichlorobenzene  
 Concen: 22.328 ng  
 RT: 7.67 min Scan# 797  
 Delta R.T. -0.01 min  
 Lab File: BM020105.D  
 Acq: 02 May 2019 17:09

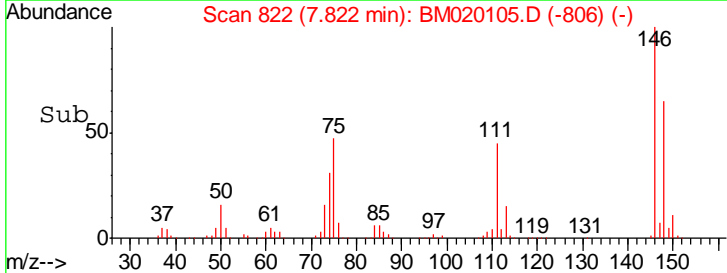
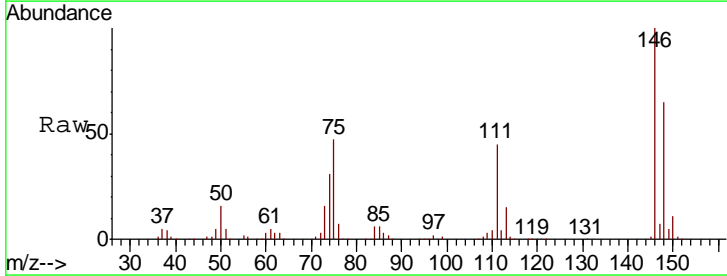
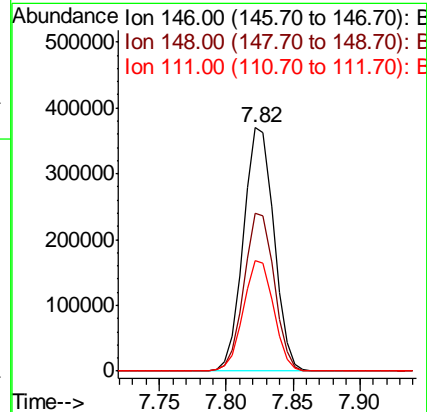
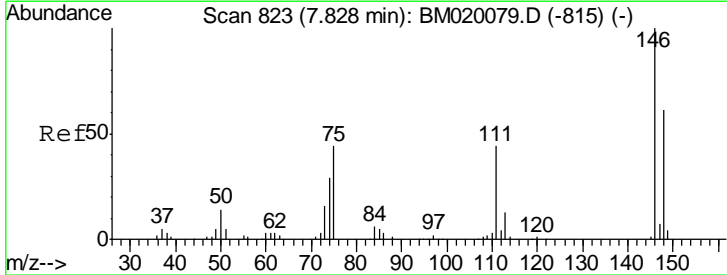
Instrument :  
 BNA\_M  
 ClientSampled :

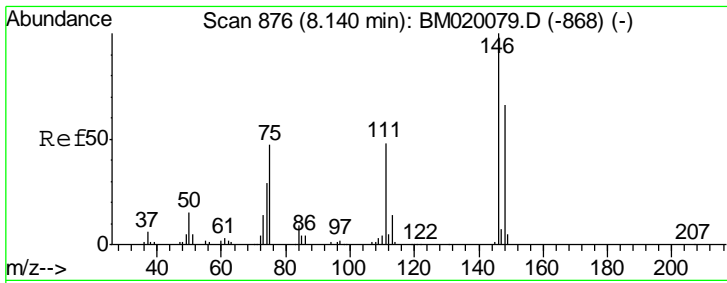
Tgt Ion	Resp	Lower	Upper
146	100		
148	64.8	50.1	75.1
75	47.9	37.2	55.8



#13  
 1,4-Dichlorobenzene  
 Concen: 60.114 ng  
 RT: 7.82 min Scan# 822  
 Delta R.T. -0.01 min  
 Lab File: BM020105.D  
 Acq: 02 May 2019 17:09

Tgt Ion	Resp	Lower	Upper
146	100		
148	65.0	48.5	72.7
111	45.2	35.7	53.5

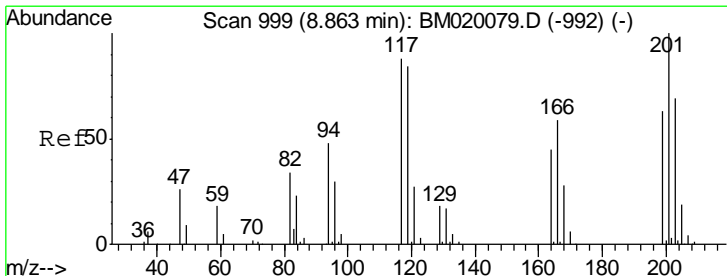
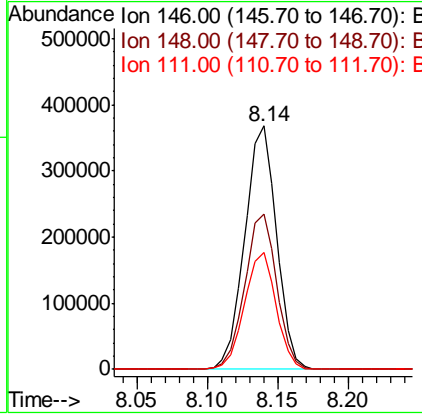
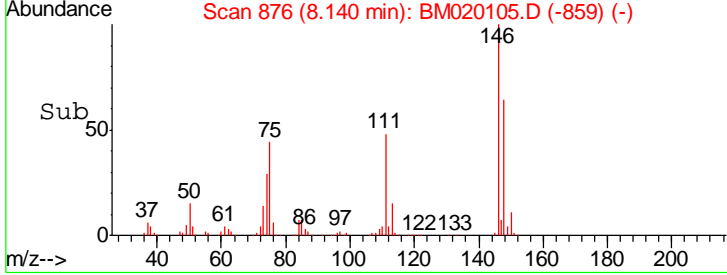
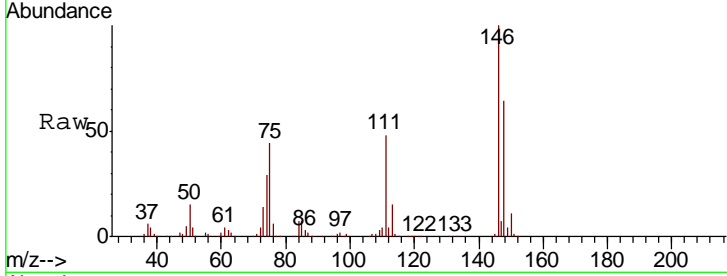




#14  
 1,2-Dichlorobenzene  
 Concen: 62.723 ng  
 RT: 8.14 min Scan# 876  
 Delta R.T. 0.00 min  
 Lab File: BM020105.D  
 Acq: 02 May 2019 17:09

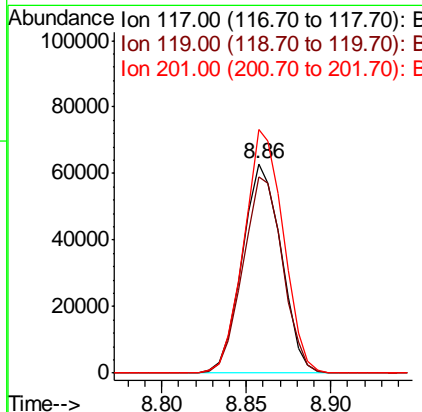
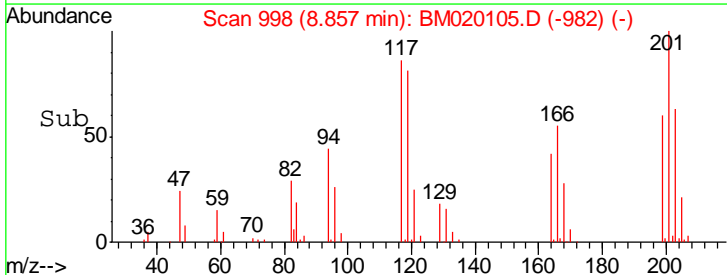
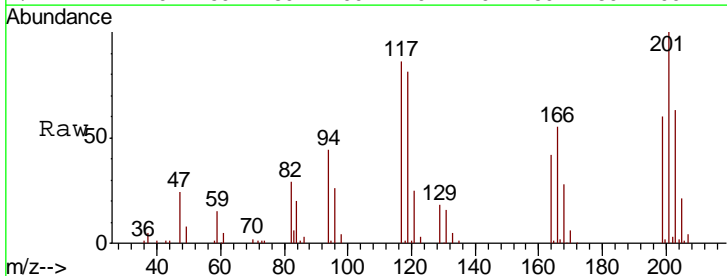
Instrument :  
 BNA\_M  
 ClientSampled :

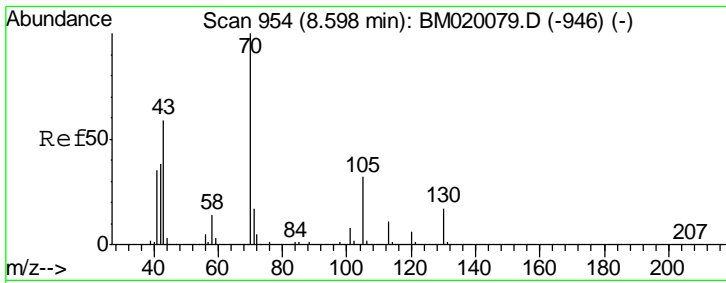
Tgt Ion	Resp	Lower	Upper
146	580327		
148	64.0	52.6	79.0
111	47.8	39.0	58.4



#18  
 Hexachloroethane  
 Concen: 24.993 ng  
 RT: 8.86 min Scan# 998  
 Delta R.T. -0.01 min  
 Lab File: BM020105.D  
 Acq: 02 May 2019 17:09

Tgt Ion	Resp	Lower	Upper
117	101202		
119	93.8	76.6	114.8
201	116.2	90.7	136.1

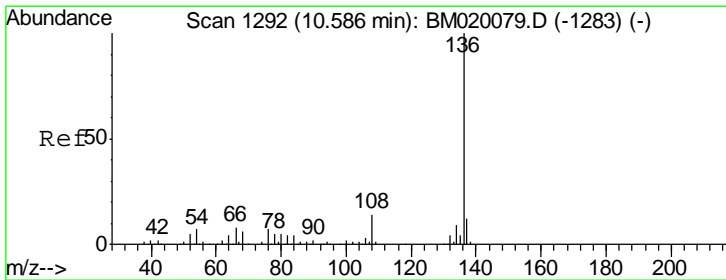
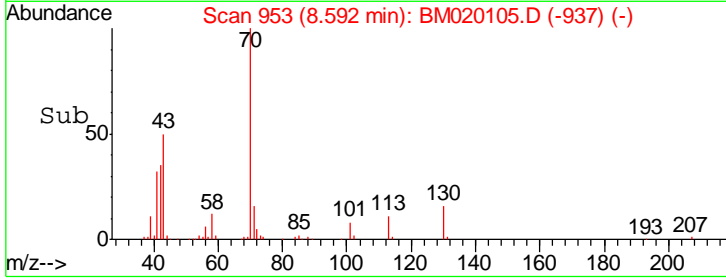
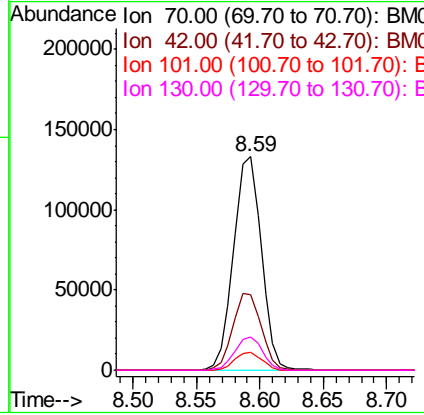
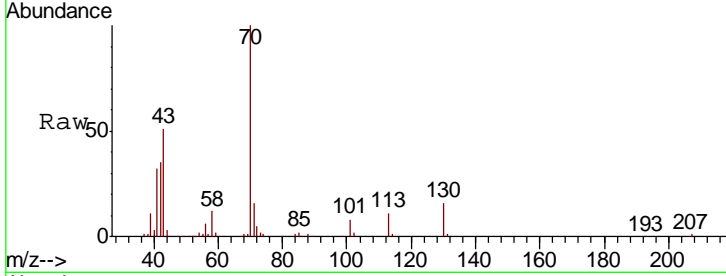




#19  
 n-Nitroso-di-n-propylamine  
 Concen: 22.822 ng  
 RT: 8.59 min Scan# 953  
 Delta R.T. -0.01 min  
 Lab File: BM020105.D  
 Acq: 02 May 2019 17:09

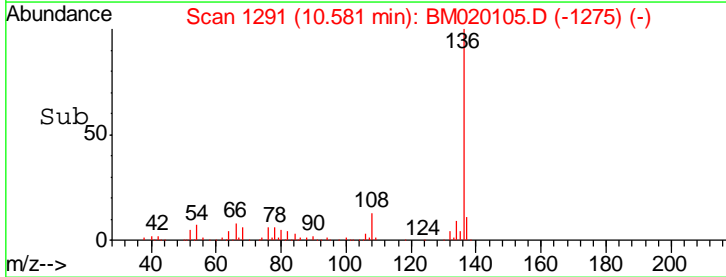
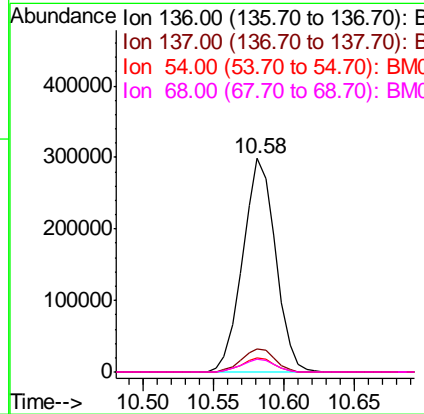
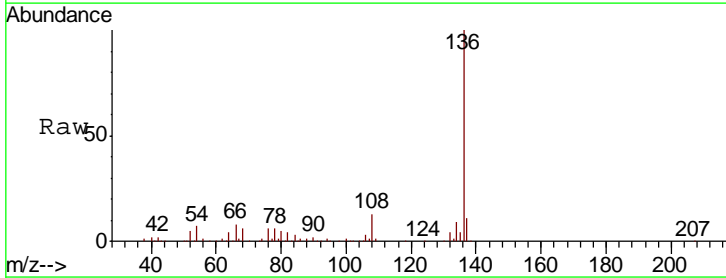
Instrument :  
 BNA\_M  
 ClientSampled :

Tgt Ion	Resp	Lower	Upper
70	100		
42	35.4	31.0	46.4
101	8.4	6.2	9.2
130	15.6	13.5	20.3

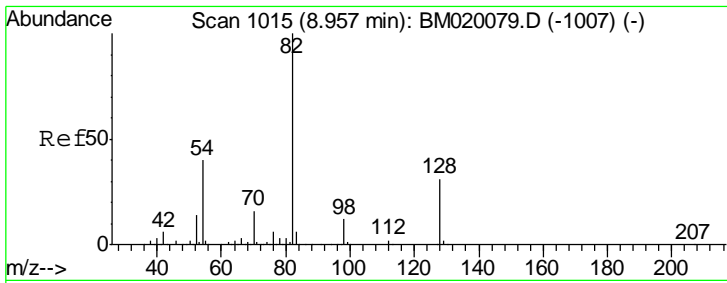


#21  
 Naphthalene-d8  
 Concen: 20.000 ng  
 RT: 10.58 min Scan# 1291  
 Delta R.T. -0.01 min  
 Lab File: BM020105.D  
 Acq: 02 May 2019 17:09

Tgt Ion	Resp	Lower	Upper
136	100		
137	10.7	9.6	14.4
54	6.7	5.5	8.3
68	6.3	4.6	6.8



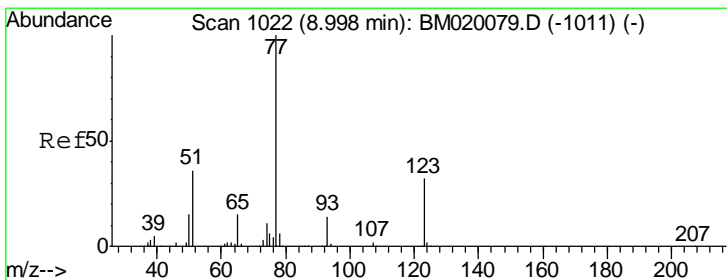
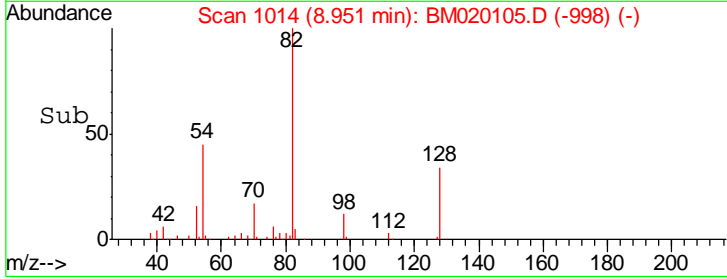
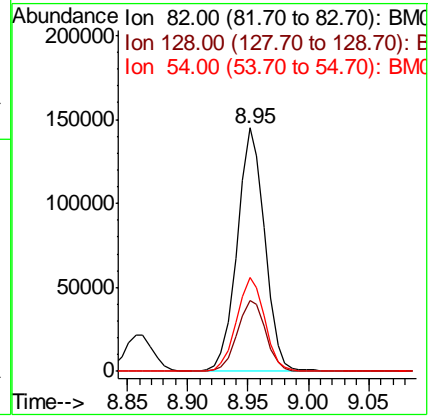
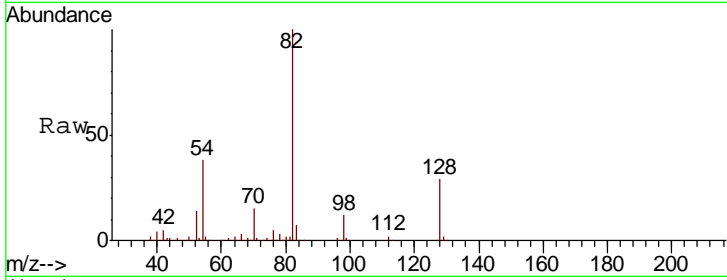




#23  
 Nitrobenzene-d5  
 Concen: 18.813 ng  
 RT: 8.95 min Scan# 1014  
 Delta R.T. -0.01 min  
 Lab File: BM020105.D  
 Acq: 02 May 2019 17:09

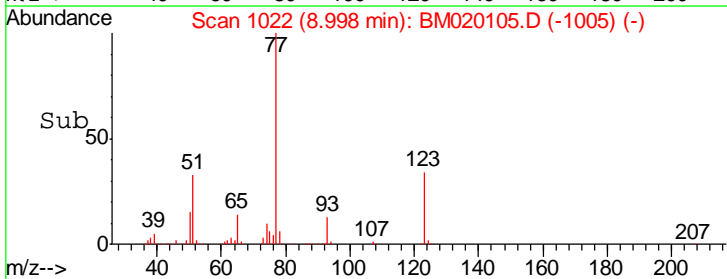
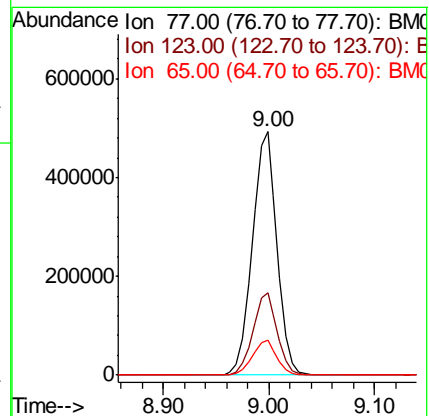
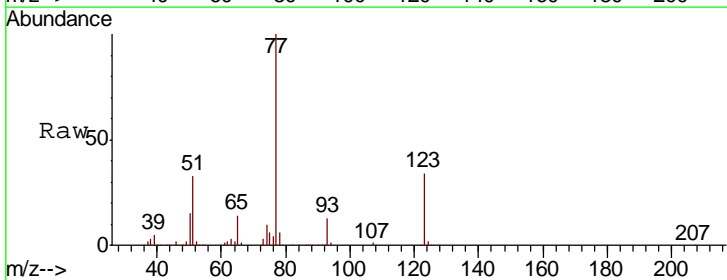
Instrument :  
 BNA\_M  
 ClientSampled :

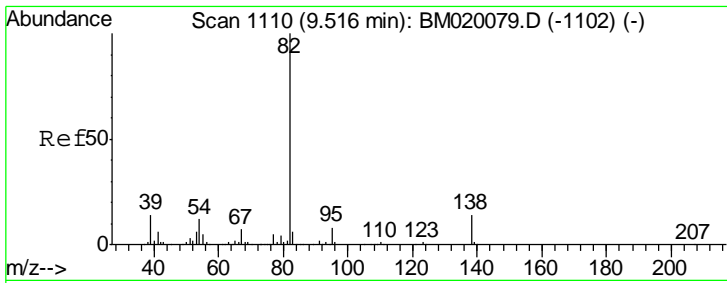
Tgt Ion	Resp	Lower	Upper
82	231047		
128	29.3	25.2	37.8
54	38.4	31.9	47.9



#24  
 Nitrobenzene  
 Concen: 62.583 ng  
 RT: 9.00 min Scan# 1022  
 Delta R.T. 0.00 min  
 Lab File: BM020105.D  
 Acq: 02 May 2019 17:09

Tgt Ion	Resp	Lower	Upper
77	796893		
123	33.6	25.5	38.3
65	14.4	11.8	17.6



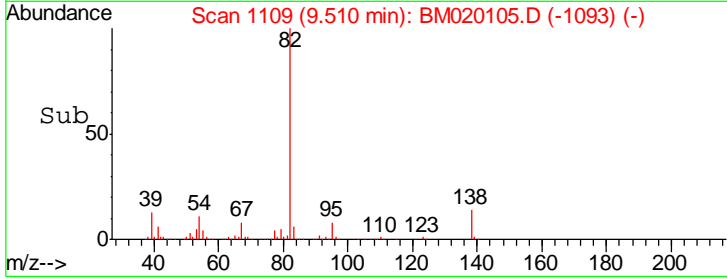
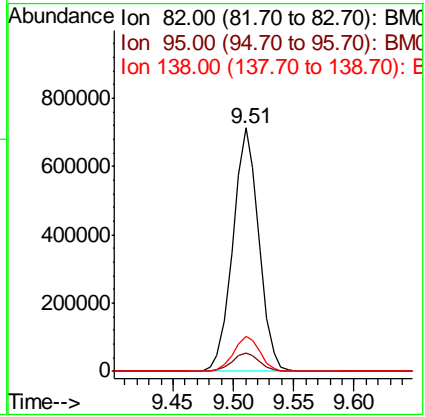
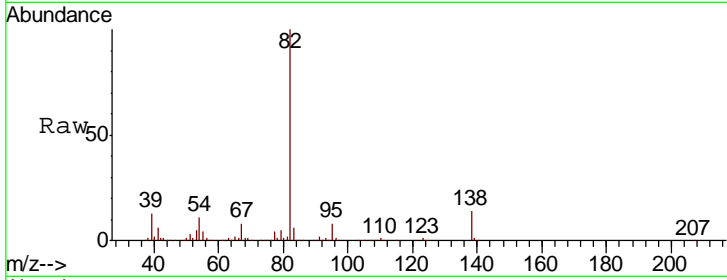


#25  
 Isophorone  
 Concen: 50.319 ng  
 RT: 9.51 min Scan# 1109  
 Delta R.T. -0.01 min  
 Lab File: BM020105.D  
 Acq: 02 May 2019 17:09

Instrument :  
 BNA\_M  
 ClientSampled :

Tgt Ion: 82 Resp: 1065673

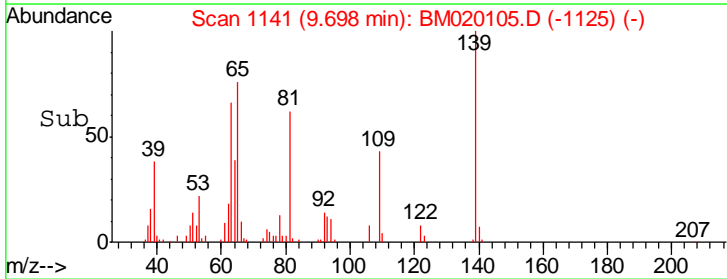
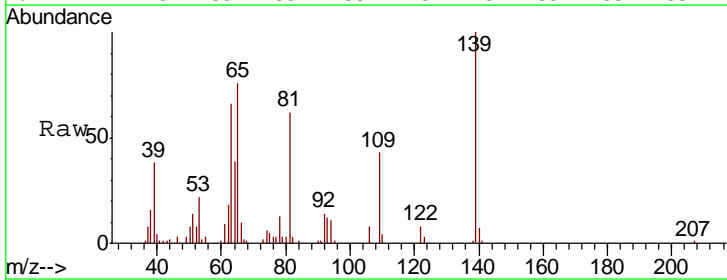
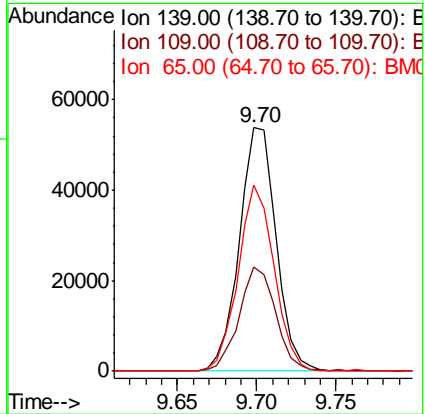
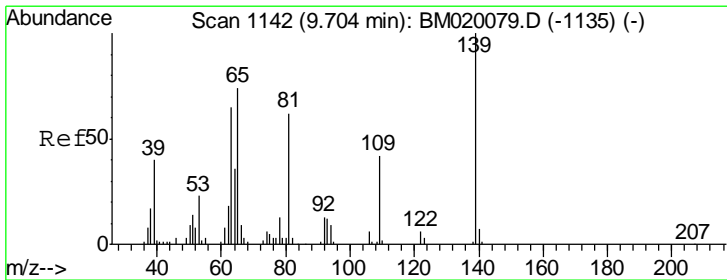
Ion	Ratio	Lower	Upper
82	100		
95	7.7	6.4	9.6
138	14.2	11.1	16.7

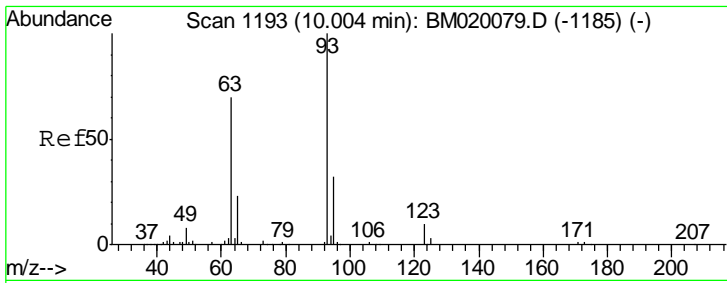


#26  
 2-Nitrophenol  
 Concen: 22.581 ng  
 RT: 9.70 min Scan# 1141  
 Delta R.T. -0.01 min  
 Lab File: BM020105.D  
 Acq: 02 May 2019 17:09

Tgt Ion: 139 Resp: 86805

Ion	Ratio	Lower	Upper
139	100		
109	42.7	33.7	50.5
65	76.3	59.5	89.3

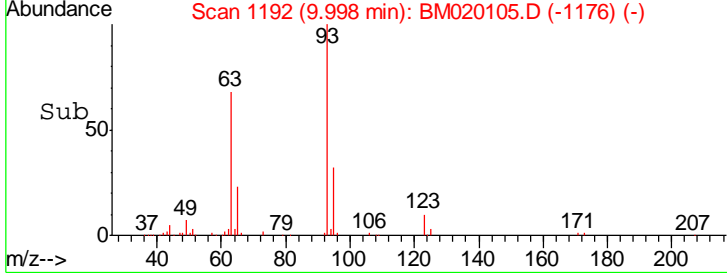
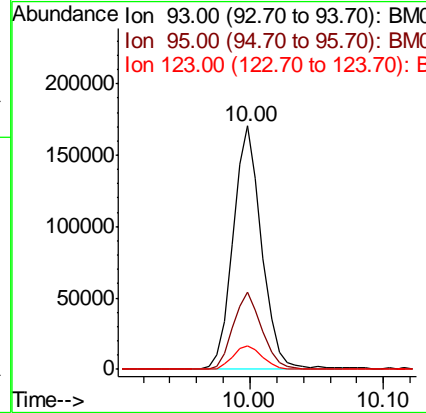
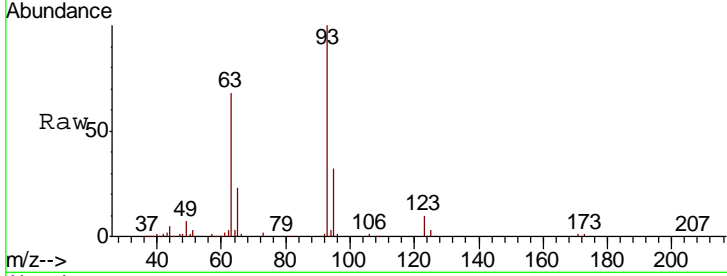




#28  
 bis(2-Chloroethoxy)methane  
 Concen: 22.085 ng  
 RT: 10.00 min Scan# 1192  
 Delta R.T. -0.01 min  
 Lab File: BM020105.D  
 Acq: 02 May 2019 17:09

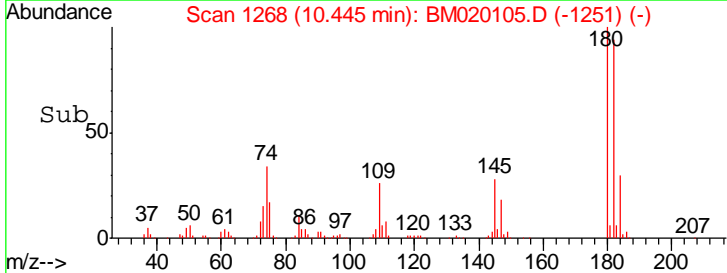
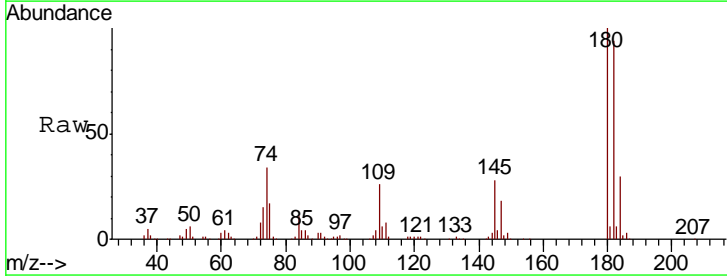
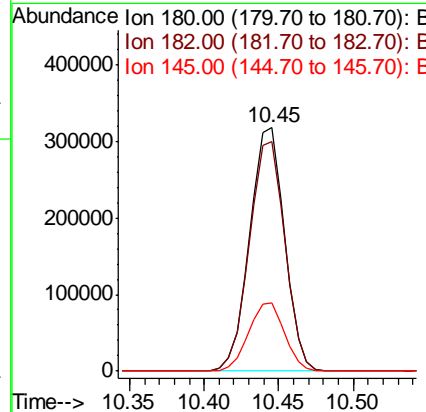
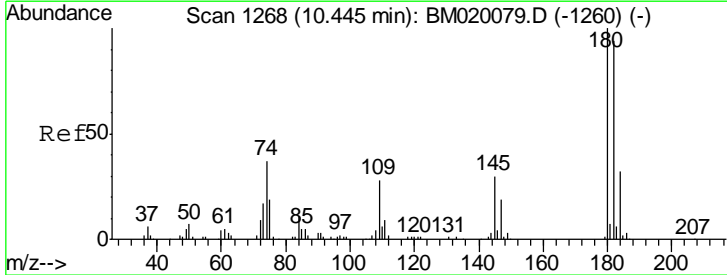
Instrument :  
 BNA\_M  
 ClientSampled :

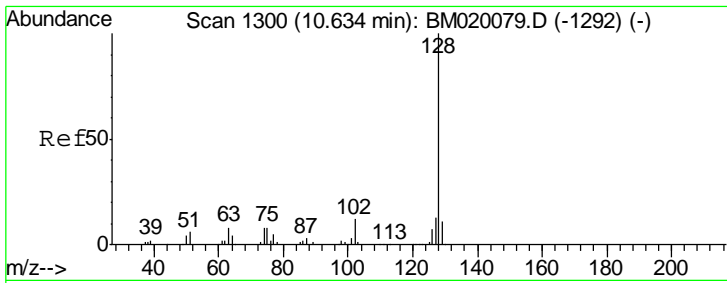
Tgt Ion	Resp	Lower	Upper
93	100		
95	31.7	25.5	38.3
123	9.6	7.6	11.4



#30  
 1,2,4-Trichlorobenzene  
 Concen: 51.647 ng  
 RT: 10.45 min Scan# 1268  
 Delta R.T. 0.00 min  
 Lab File: BM020105.D  
 Acq: 02 May 2019 17:09

Tgt Ion	Resp	Lower	Upper
180	100		
182	94.4	75.4	113.0
145	28.1	23.8	35.8

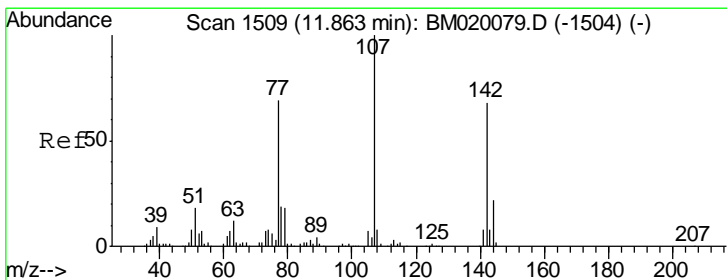
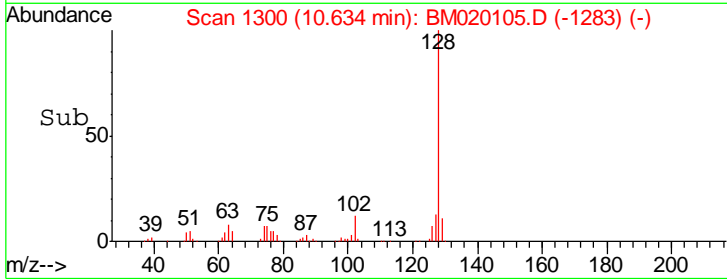
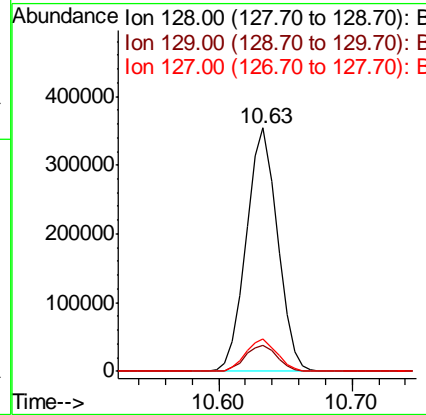
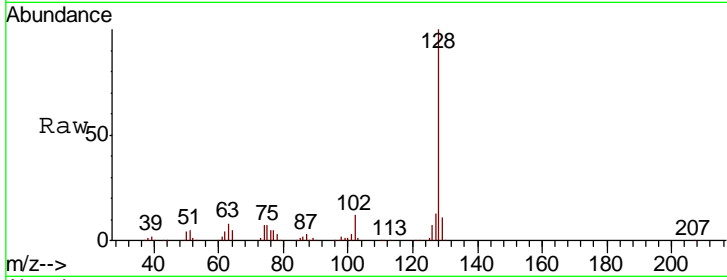




#31  
 Naphthalene  
 Concen: 22.675 ng  
 RT: 10.63 min Scan# 1300  
 Delta R.T. 0.00 min  
 Lab File: BM020105.D  
 Acq: 02 May 2019 17:09

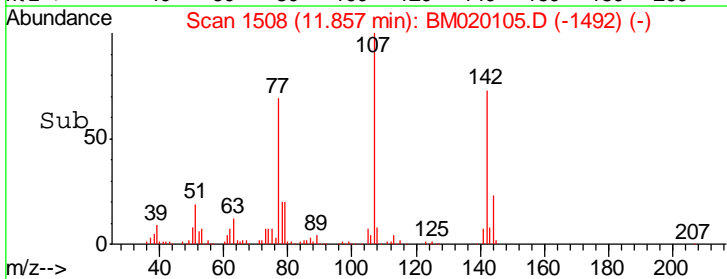
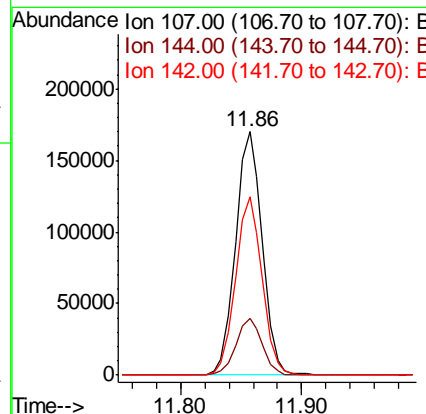
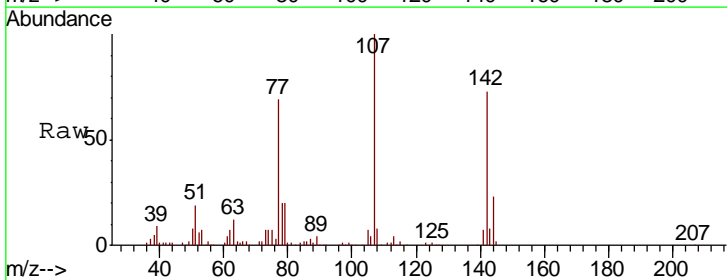
Instrument :  
 BNA\_M  
 ClientSampled :

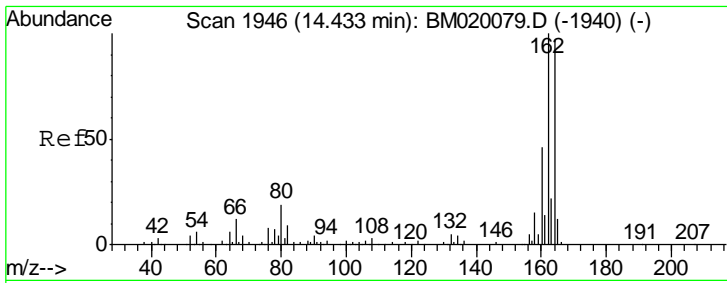
Tgt Ion	Resp	Lower	Upper
128	570519		
129	10.6	9.0	13.4
127	13.5	10.4	15.6



#36  
 4-Chloro-3-methylphenol  
 Concen: 27.572 ng  
 RT: 11.86 min Scan# 1508  
 Delta R.T. -0.01 min  
 Lab File: BM020105.D  
 Acq: 02 May 2019 17:09

Tgt Ion	Resp	Lower	Upper
107	261488		
144	23.3	17.6	26.4
142	73.4	54.6	82.0

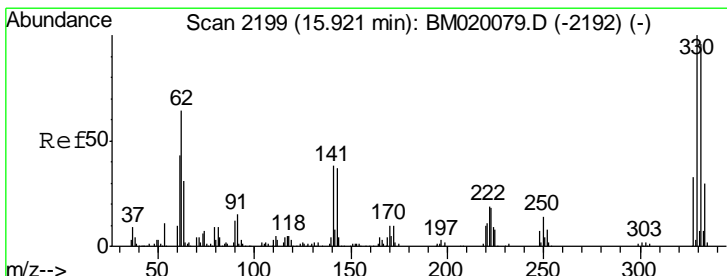
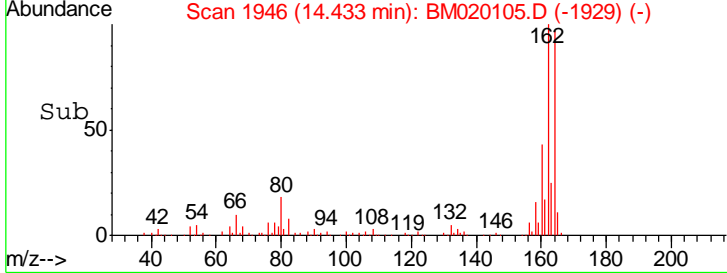
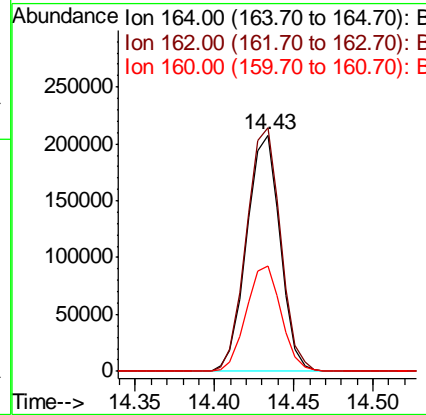
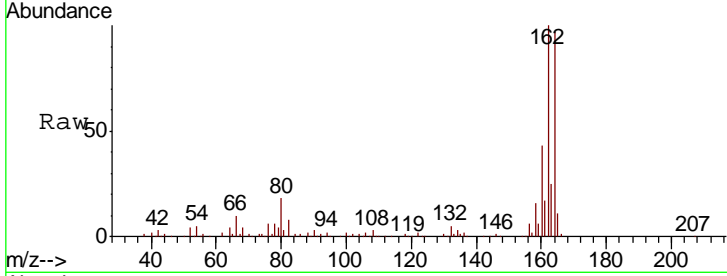




#39  
 Acenaphthene-d10  
 Concen: 20.000 ng  
 RT: 14.43 min Scan# 1946  
 Delta R.T. 0.00 min  
 Lab File: BM020105.D  
 Acq: 02 May 2019 17:09

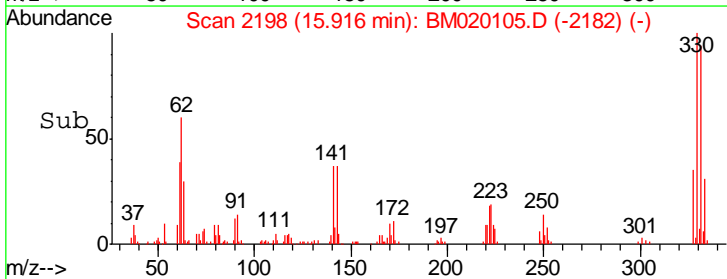
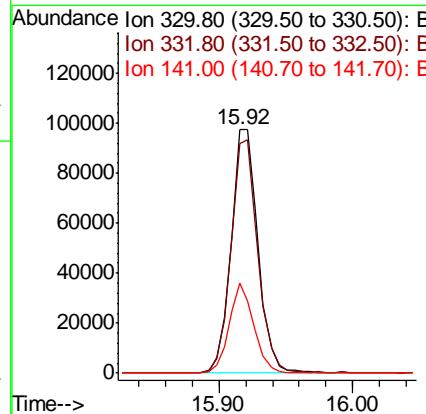
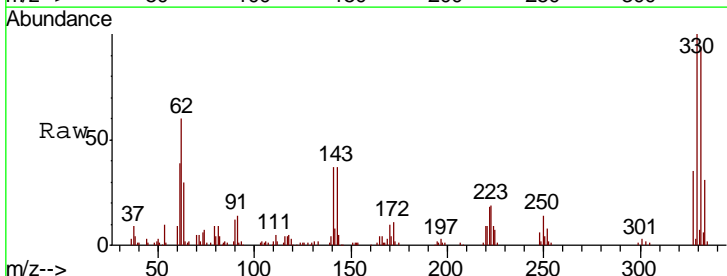
Instrument :  
 BNA\_M  
 ClientSampled :

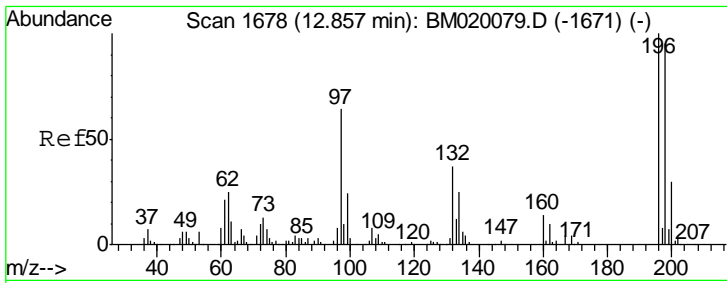
Tgt Ion	Resp	Lower	Upper
164	100		
162	103.0	82.2	123.2
160	44.8	37.6	56.4



#42  
 2,4,6-Tribromophenol  
 Concen: 29.199 ng  
 RT: 15.92 min Scan# 2198  
 Delta R.T. -0.01 min  
 Lab File: BM020105.D  
 Acq: 02 May 2019 17:09

Tgt Ion	Resp	Lower	Upper
330	100		
332	95.6	76.8	115.2
141	34.0	29.2	43.8

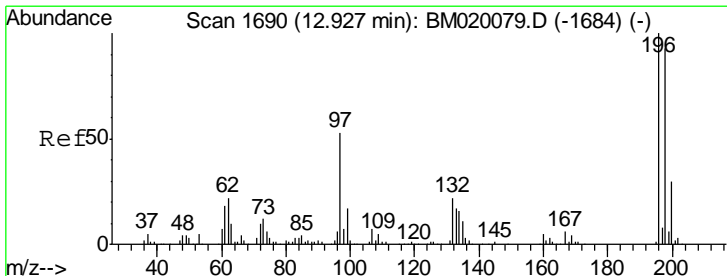
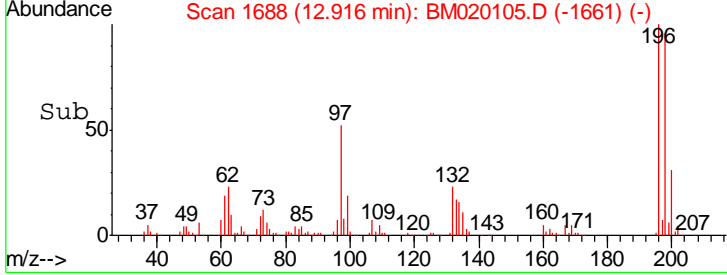
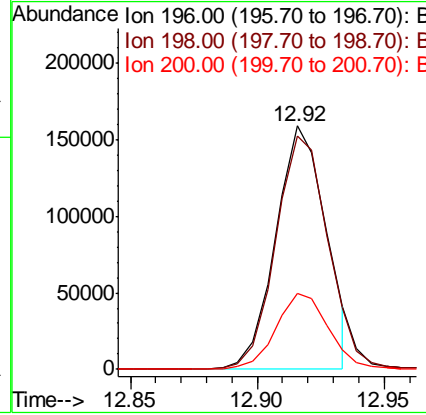
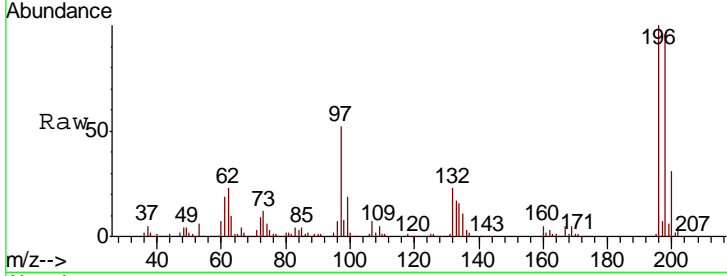




#43  
 2,4,6-Trichlorophenol  
 Concen: 32.590 ng  
 RT: 12.92 min Scan# 1688  
 Delta R.T. 0.06 min  
 Lab File: BM020105.D  
 Acq: 02 May 2019 17:09

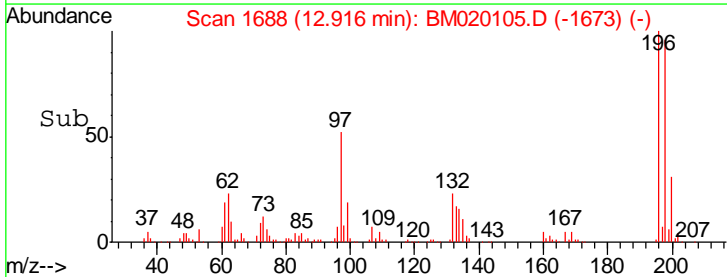
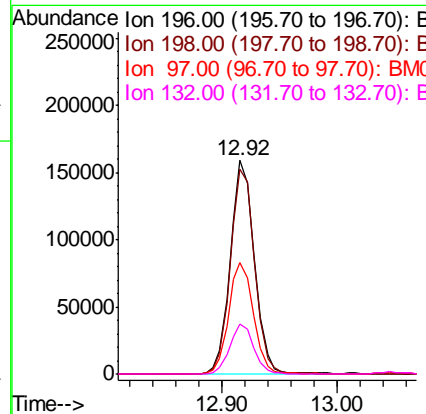
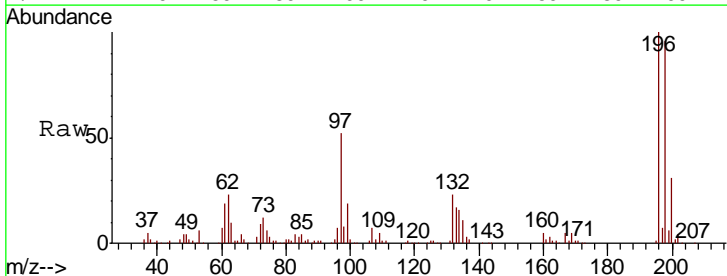
Instrument :  
 BNA\_M  
 ClientSampled :

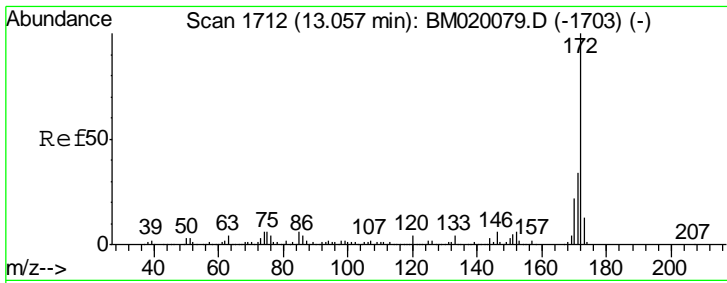
Tgt Ion	Resp	Lower	Upper
196	100		
198	95.7	76.2	114.2
200	31.3	24.3	36.5



#44  
 2,4,5-Trichlorophenol  
 Concen: 30.372 ng  
 RT: 12.92 min Scan# 1688  
 Delta R.T. -0.01 min  
 Lab File: BM020105.D  
 Acq: 02 May 2019 17:09

Tgt Ion	Resp	Lower	Upper
196	100		
198	95.7	74.7	112.1
97	52.2	42.2	63.4
132	23.3	17.8	26.8

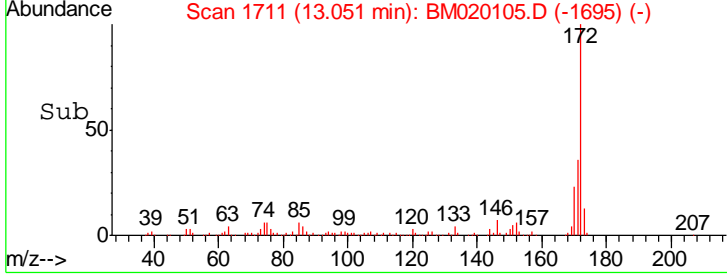
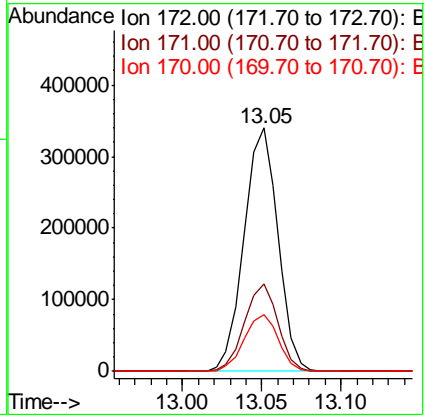
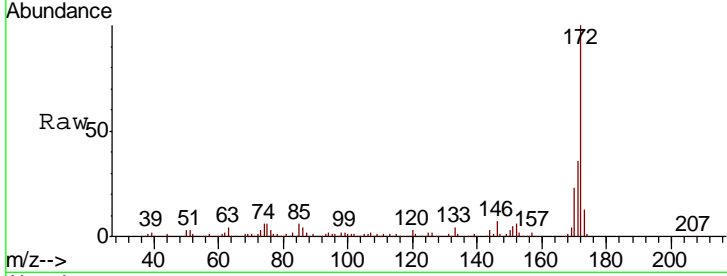




#45  
 2-Fluorobiphenyl  
 Concen: 20.392 ng  
 RT: 13.05 min Scan# 1711  
 Delta R.T. -0.01 min  
 Lab File: BM020105.D  
 Acq: 02 May 2019 17:09

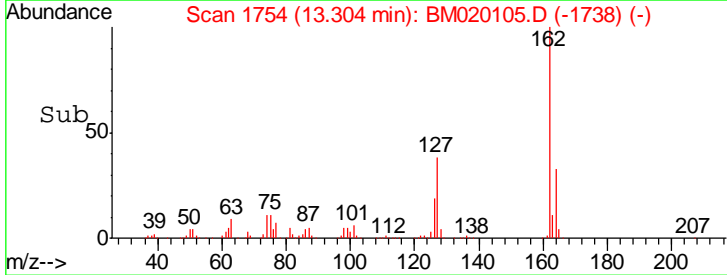
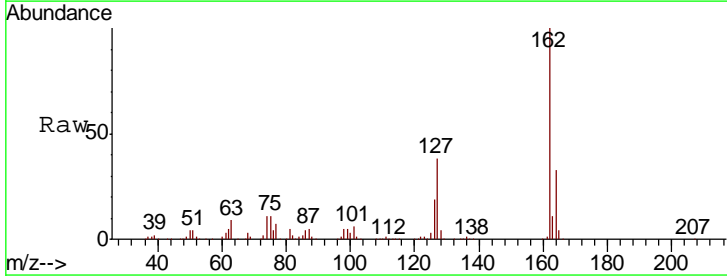
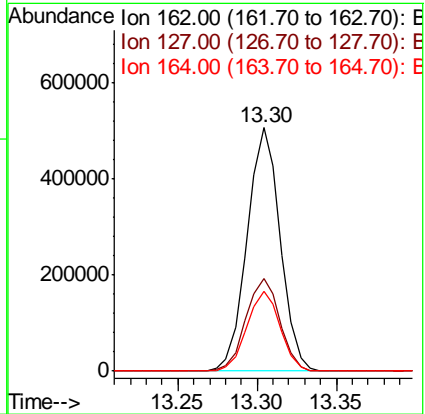
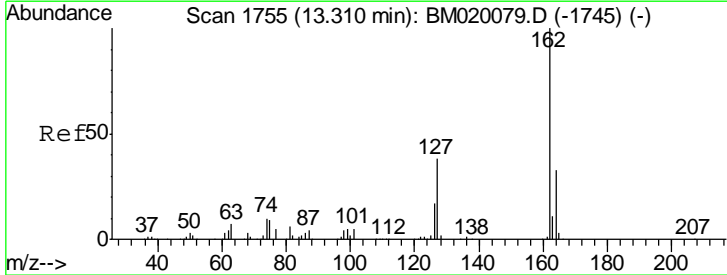
Instrument :  
 BNA\_M  
 ClientSampled :

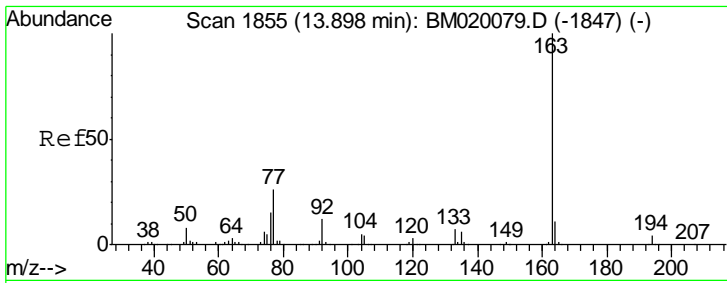
Tgt Ion	Resp	Lower	Upper
172	504141		
171	35.8	27.3	40.9
170	23.2	17.9	26.9



#47  
 2-Chloronaphthalene  
 Concen: 36.646 ng  
 RT: 13.30 min Scan# 1754  
 Delta R.T. -0.01 min  
 Lab File: BM020105.D  
 Acq: 02 May 2019 17:09

Tgt Ion	Resp	Lower	Upper
162	732552		
127	37.9	31.0	46.4
164	32.9	26.2	39.2



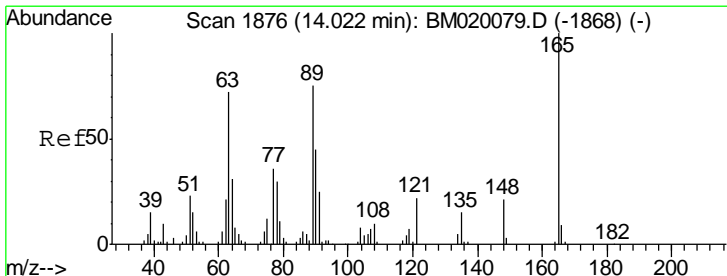
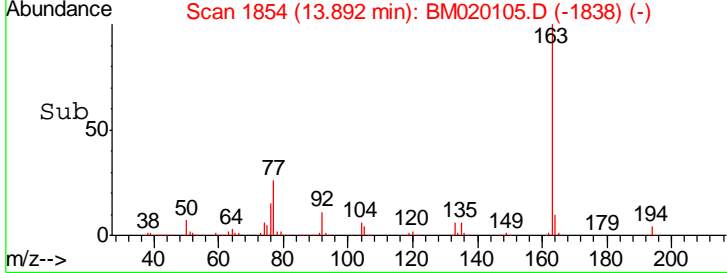
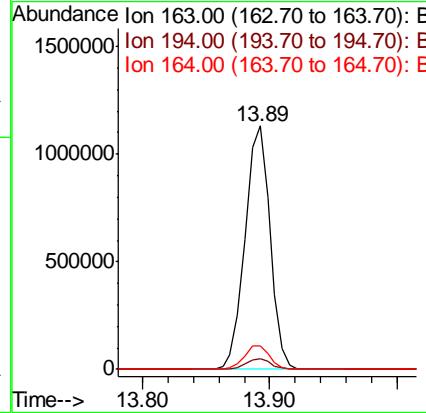
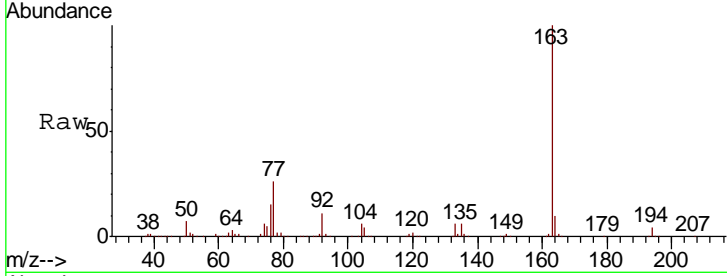


#50  
 Dimethylphthalate  
 Concen: 59.712 ng  
 RT: 13.89 min Scan# 1854  
 Delta R.T. -0.01 min  
 Lab File: BM020105.D  
 Acq: 02 May 2019 17:09

Instrument :  
 BNA\_M  
 ClientSampled :

Tgt Ion: 163 Resp: 1543712

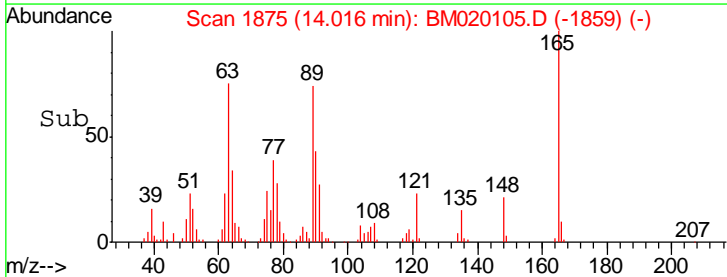
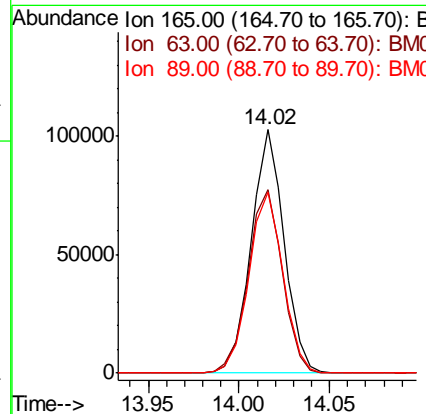
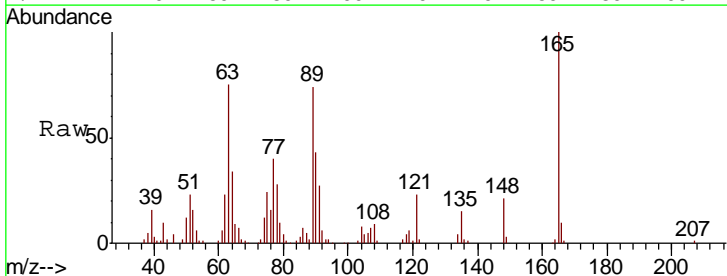
Ion	Ratio	Lower	Upper
163	100		
194	4.3	3.6	5.4
164	9.8	8.4	12.6



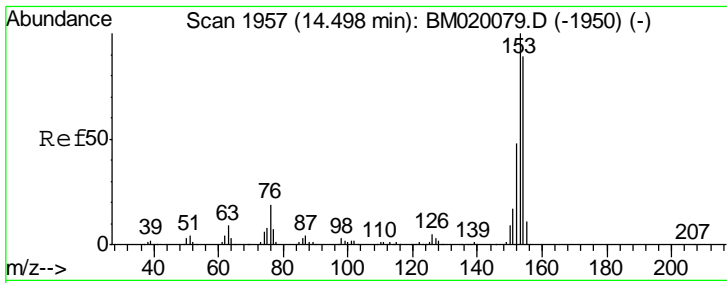
#51  
 2,6-Dinitrotoluene  
 Concen: 23.730 ng  
 RT: 14.02 min Scan# 1875  
 Delta R.T. -0.01 min  
 Lab File: BM020105.D  
 Acq: 02 May 2019 17:09

Tgt Ion: 165 Resp: 129210

Ion	Ratio	Lower	Upper
165	100		
63	75.4	60.3	90.5
89	74.2	59.8	89.6







#52

Acenaphthene

Concen: 19.482 ng

RT: 14.49 min Scan# 1956

Delta R.T. -0.01 min

Lab File: BM020105.D

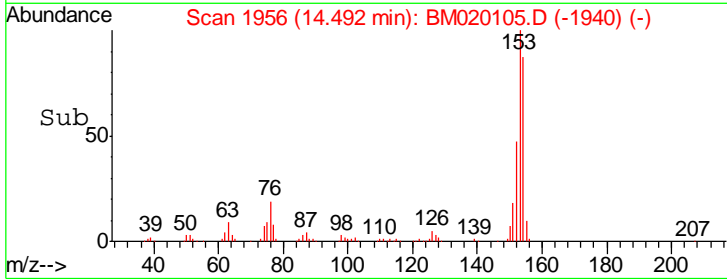
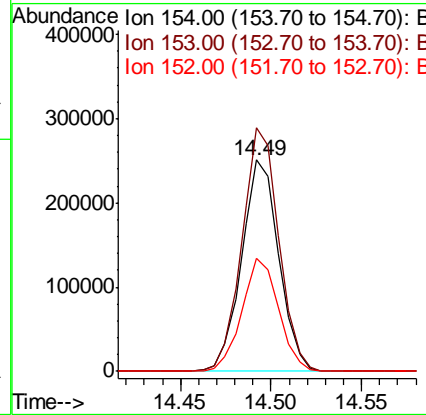
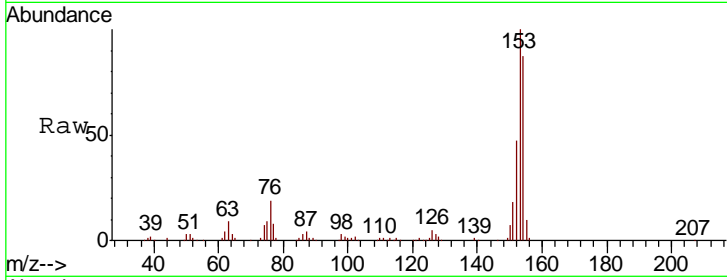
Acq: 02 May 2019 17:09

Instrument :

BNA\_M

ClientSampled :

Tgt Ion	Resp	Lower	Upper
154	100		
153	115.3	90.2	135.2
152	53.7	43.0	64.4



#55

Dibenzofuran

Concen: 13.781 ng

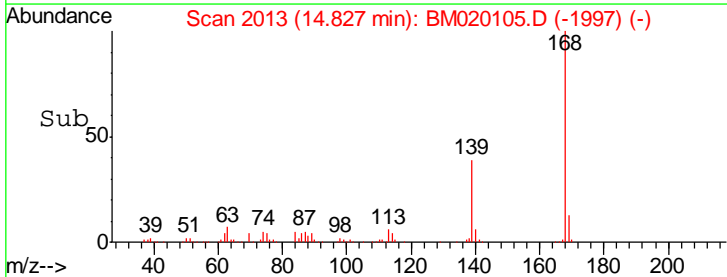
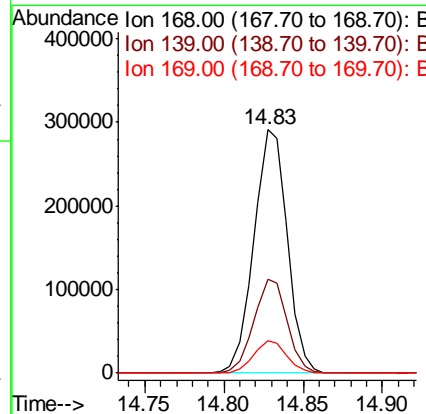
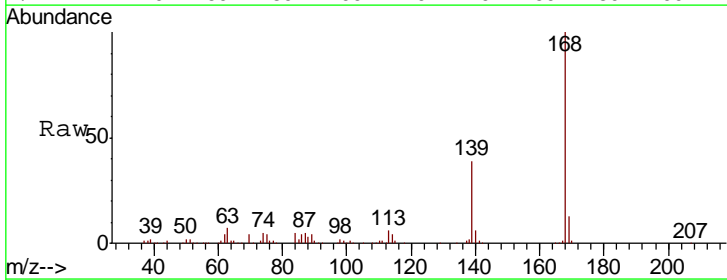
RT: 14.83 min Scan# 2013

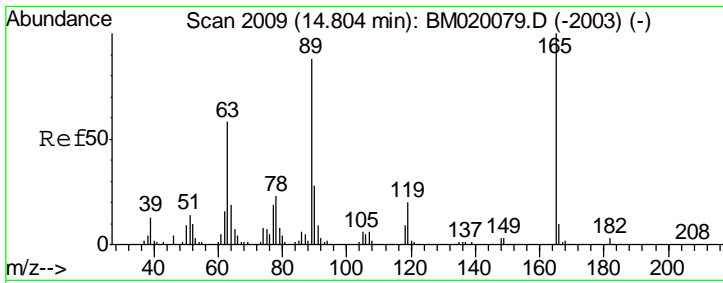
Delta R.T. -0.01 min

Lab File: BM020105.D

Acq: 02 May 2019 17:09

Tgt Ion	Resp	Lower	Upper
168	100		
139	38.7	31.1	46.7
169	13.3	10.6	16.0

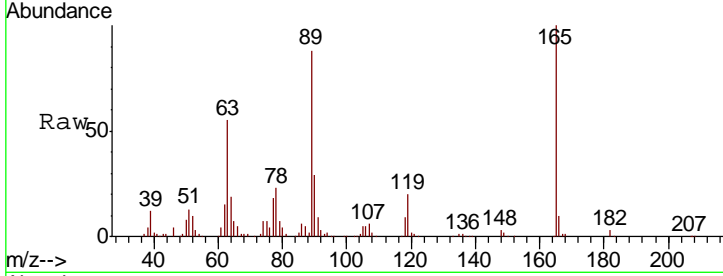




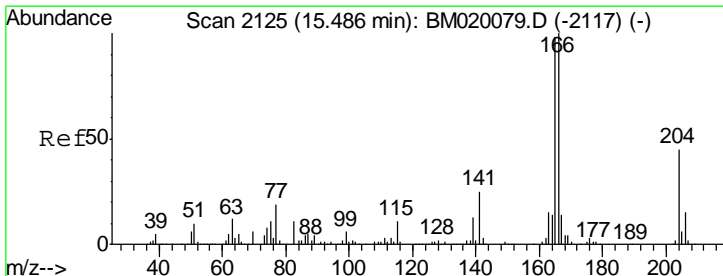
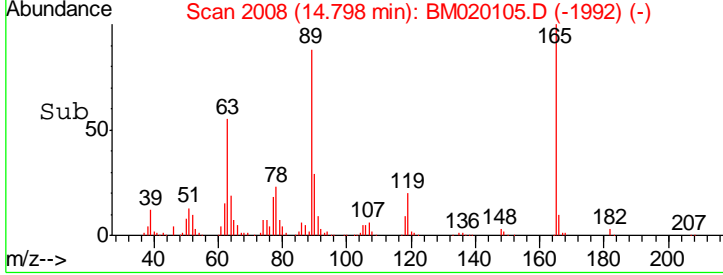
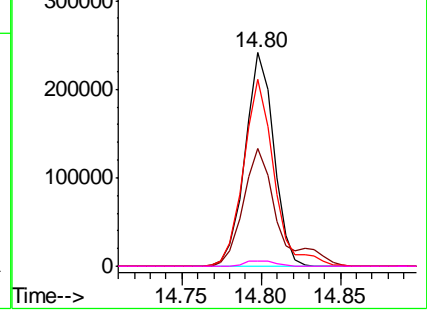
#57  
 2,4-Dinitrotoluene  
 Concen: 40.837 ng  
 RT: 14.80 min Scan# 2008  
 Delta R.T. -0.01 min  
 Lab File: BM020105.D  
 Acq: 02 May 2019 17:09

Instrument :  
 BNA\_M  
 ClientSampled :

Tgt Ion	Resp	Lower	Upper
165	302145		
63	54.9	46.2	69.2
89	87.6	70.6	105.8
182	2.5	2.2	3.2

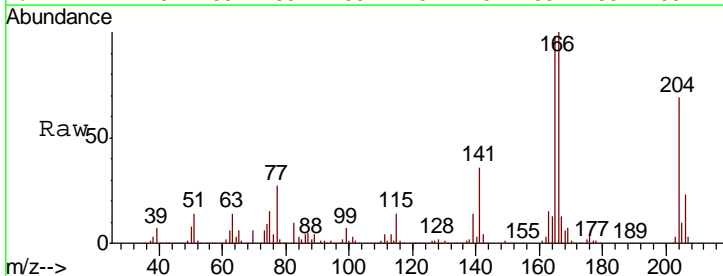


Abundance Ion 165.00 (164.70 to 165.70): E  
 Ion 63.00 (62.70 to 63.70): BM  
 Ion 89.00 (88.70 to 89.70): BM  
 Ion 182.00 (181.70 to 182.70): E

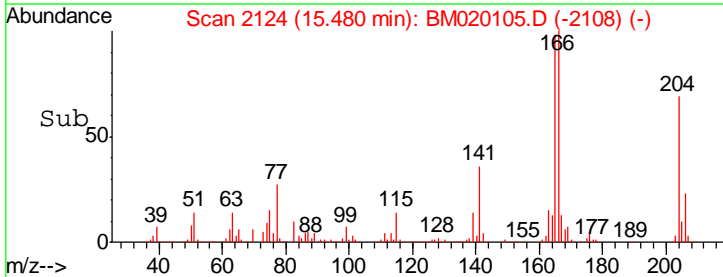
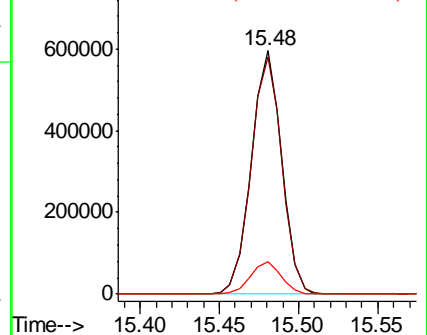


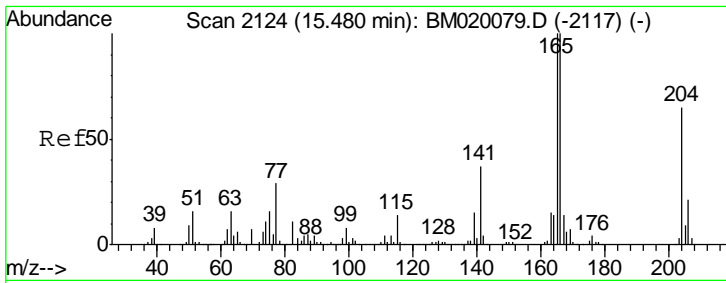
#58  
 Fluorene  
 Concen: 31.057 ng  
 RT: 15.48 min Scan# 2124  
 Delta R.T. -0.01 min  
 Lab File: BM020105.D  
 Acq: 02 May 2019 17:09

Tgt Ion	Resp	Lower	Upper
166	789276		
165	97.6	78.2	117.2
167	13.5	11.0	16.4



Abundance Ion 166.00 (165.70 to 166.70): E  
 Ion 165.00 (164.70 to 165.70): E  
 Ion 167.00 (166.70 to 167.70): E

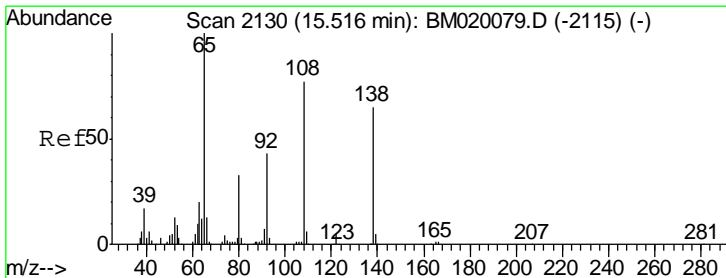
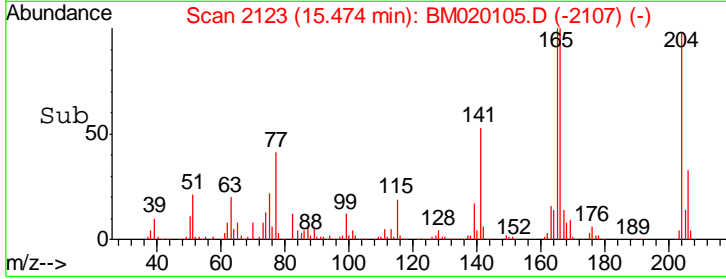
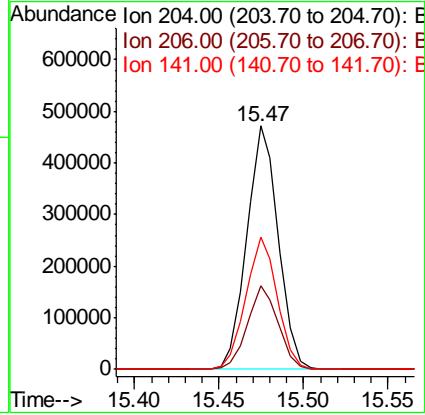
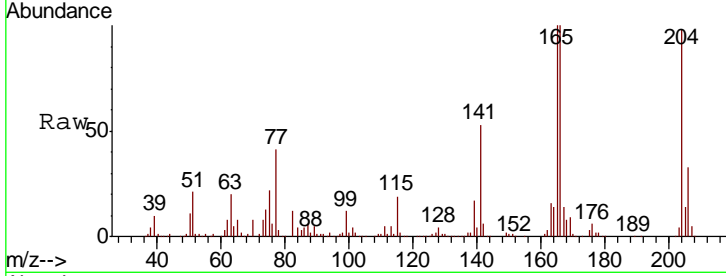




#61  
 4-Chlorophenyl-phenylether  
 Concen: 42.368 ng  
 RT: 15.47 min Scan# 2123  
 Delta R.T. -0.01 min  
 Lab File: BM020105.D  
 Acq: 02 May 2019 17:09

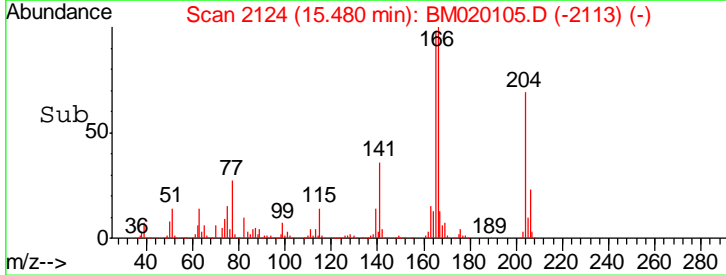
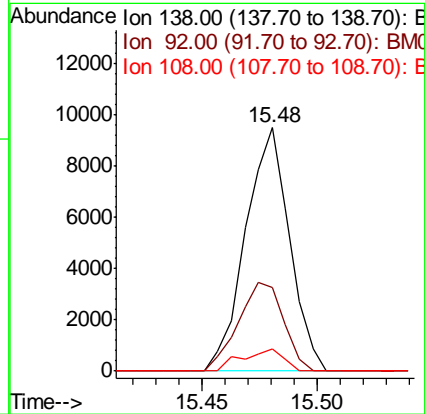
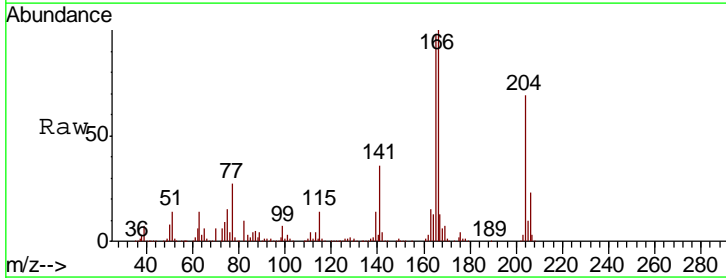
Instrument :  
 BNA\_M  
 ClientSampled :

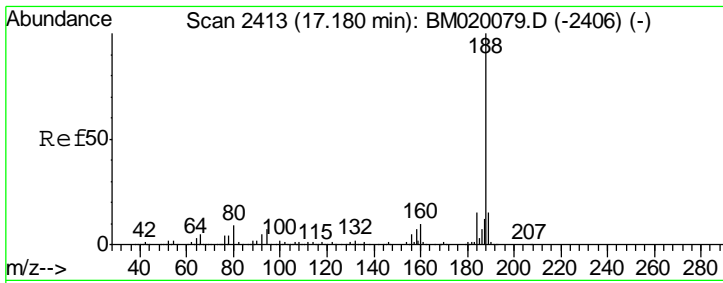
Tgt Ion	Resp	Lower	Upper
204	610083		
206	34.1	25.6	38.4
141	54.3	46.1	69.1



#62  
 4-Nitroaniline  
 Concen: 2.249 ng  
 RT: 15.48 min Scan# 2124  
 Delta R.T. -0.04 min  
 Lab File: BM020105.D  
 Acq: 02 May 2019 17:09

Tgt Ion	Resp	Lower	Upper
138	12545		
92	34.2	45.9	85.9#
108	8.9	97.7	137.7#

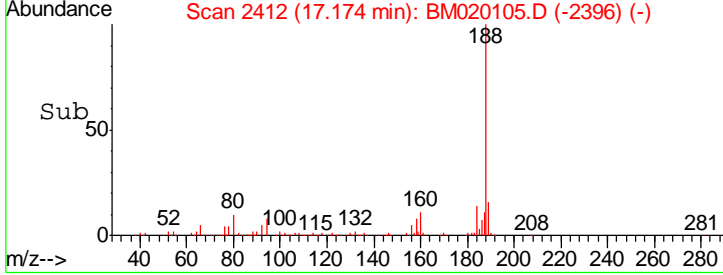
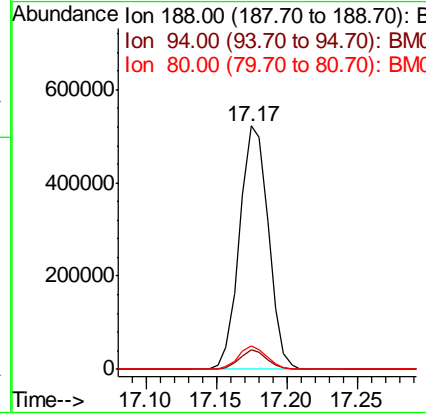
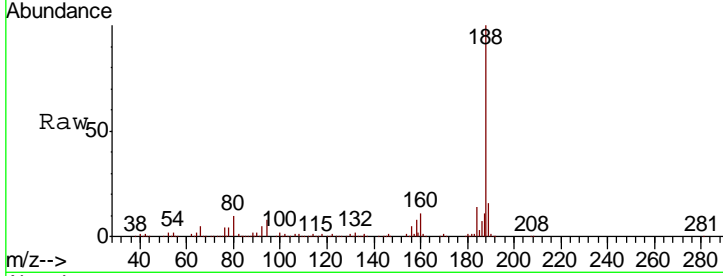




#64  
 Phenanthrene-d10  
 Concen: 20.000 ng  
 RT: 17.17 min Scan# 2412  
 Delta R.T. -0.01 min  
 Lab File: BM020105.D  
 Acq: 02 May 2019 17:09

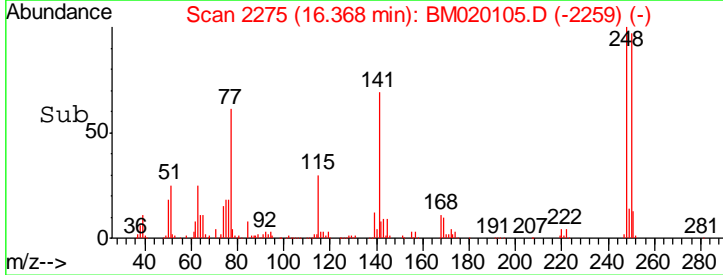
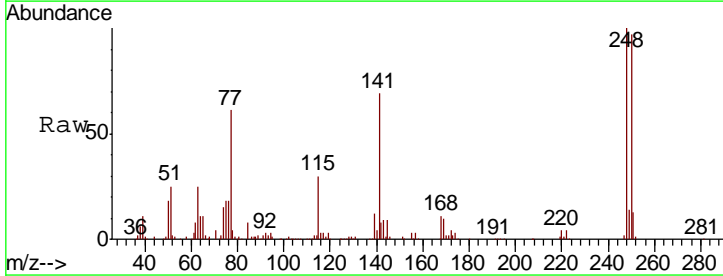
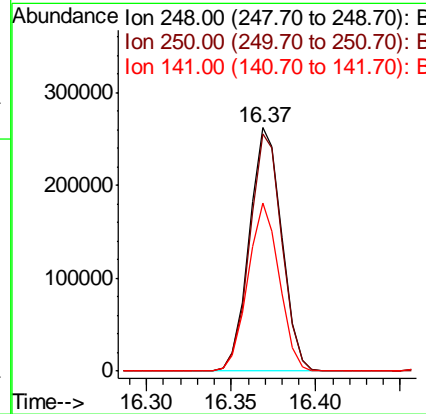
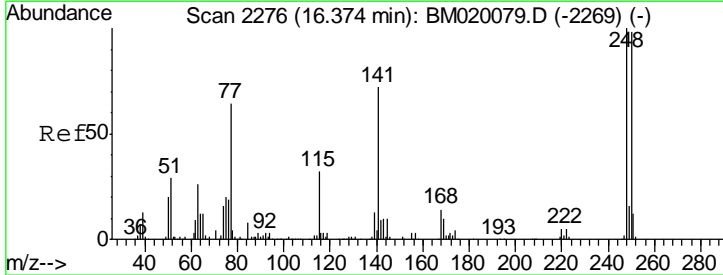
Instrument :  
 BNA\_M  
 ClientSampled :

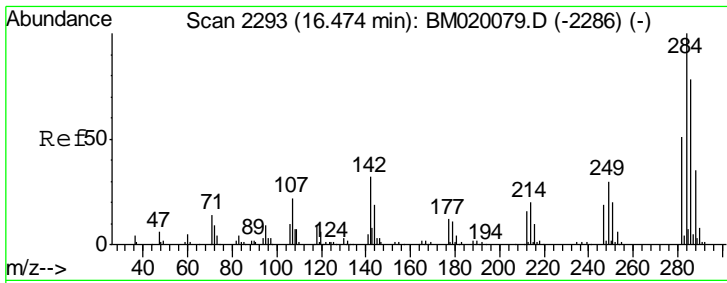
Tgt Ion	Resp	Lower	Upper
188	100		
94	7.8	5.8	8.6
80	9.8	7.4	11.2



#67  
 4-Bromophenyl-phenylether  
 Concen: 38.332 ng  
 RT: 16.37 min Scan# 2275  
 Delta R.T. -0.01 min  
 Lab File: BM020105.D  
 Acq: 02 May 2019 17:09

Tgt Ion	Resp	Lower	Upper
248	100		
250	97.4	78.4	117.6
141	68.8	57.4	86.2

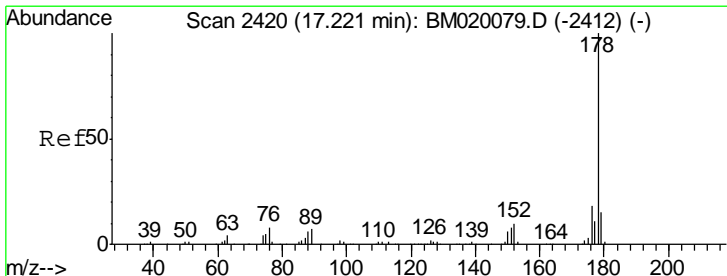
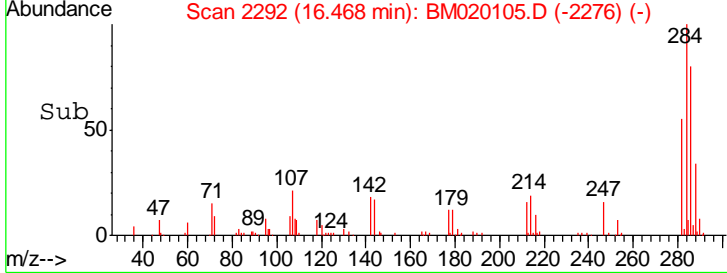
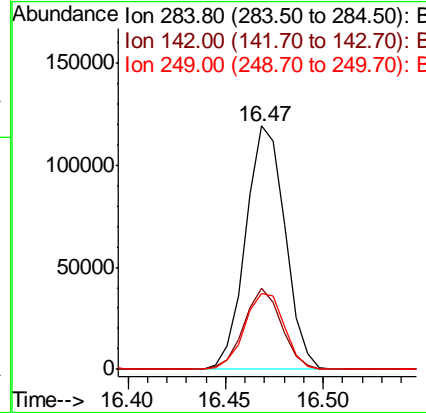
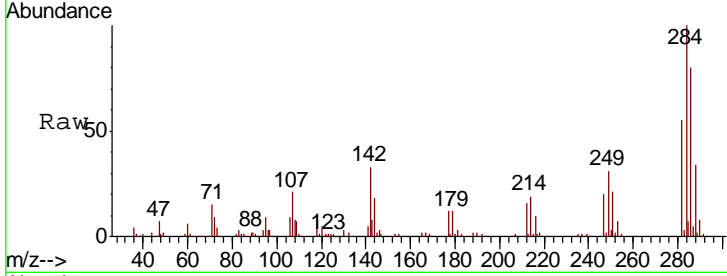




#68  
 Hexachlorobenzene  
 Concen: 15.835 ng  
 RT: 16.47 min Scan# 2292  
 Delta R.T. -0.01 min  
 Lab File: BM020105.D  
 Acq: 02 May 2019 17:09

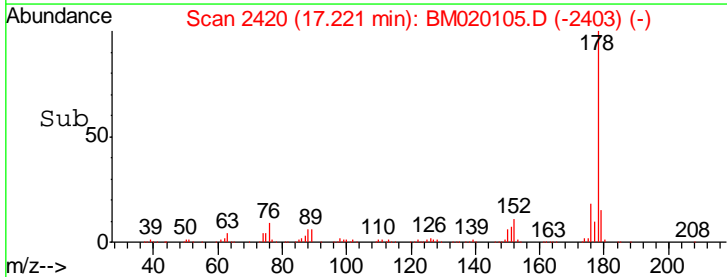
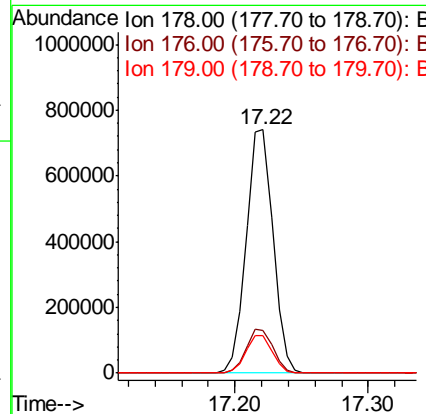
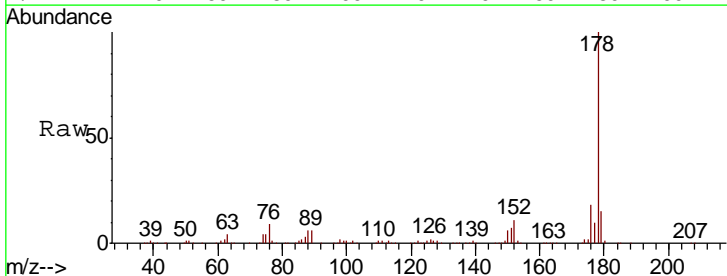
Instrument :  
 BNA\_M  
 ClientSampled :

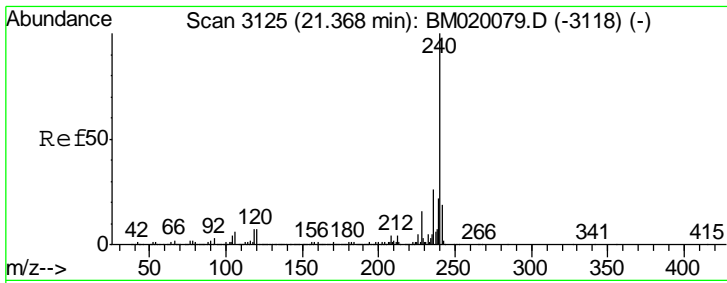
Tgt Ion	Resp	Lower	Upper
284	166422		
142	33.4	25.2	37.8
249	31.3	23.6	35.4



#71  
 Phenanthrene  
 Concen: 24.933 ng  
 RT: 17.22 min Scan# 2420  
 Delta R.T. 0.00 min  
 Lab File: BM020105.D  
 Acq: 02 May 2019 17:09

Tgt Ion	Resp	Lower	Upper
178	1025108		
176	17.7	14.6	21.8
179	15.3	12.4	18.6

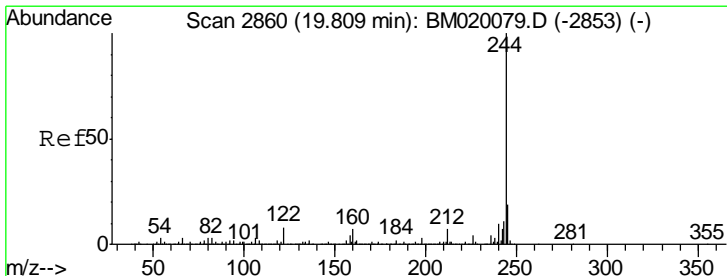
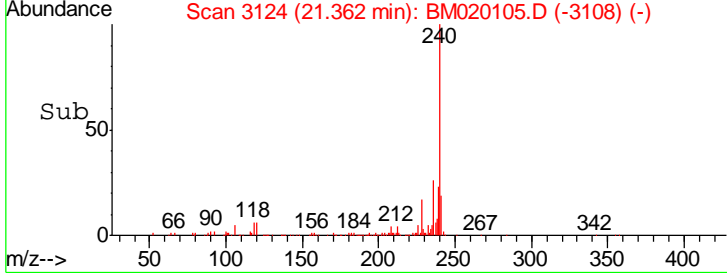
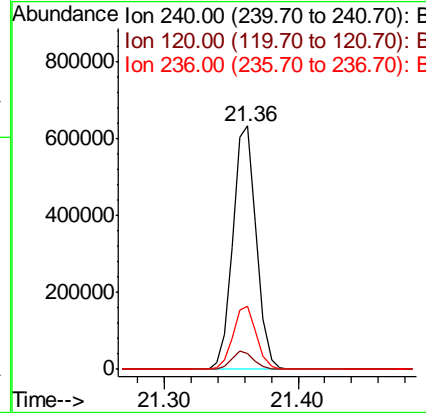
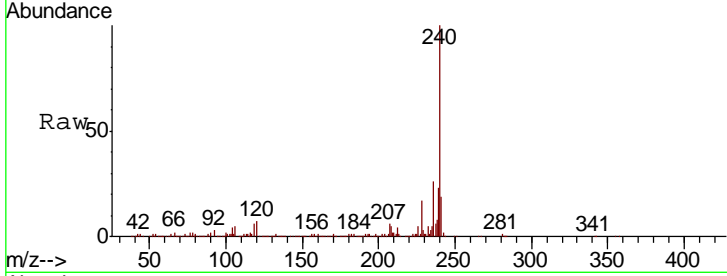




#76  
 Chrysene-d12  
 Concen: 20.000 ng  
 RT: 21.36 min Scan# 3124  
 Delta R.T. -0.01 min  
 Lab File: BM020105.D  
 Acq: 02 May 2019 17:09

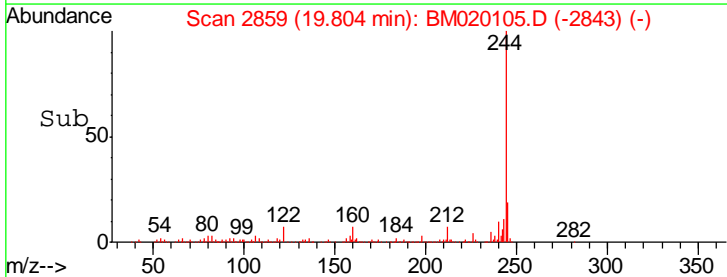
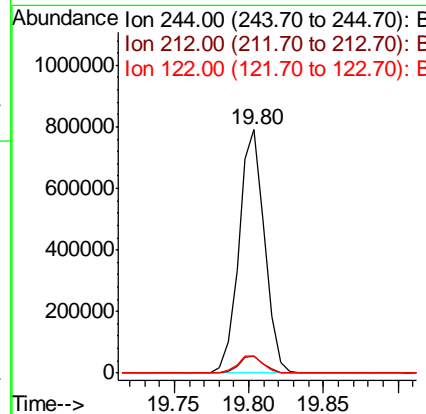
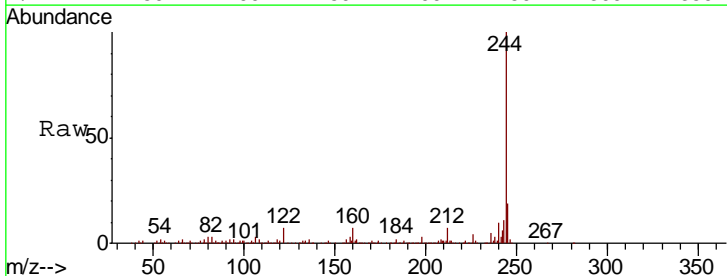
Instrument :  
 BNA\_M  
 ClientSampled :

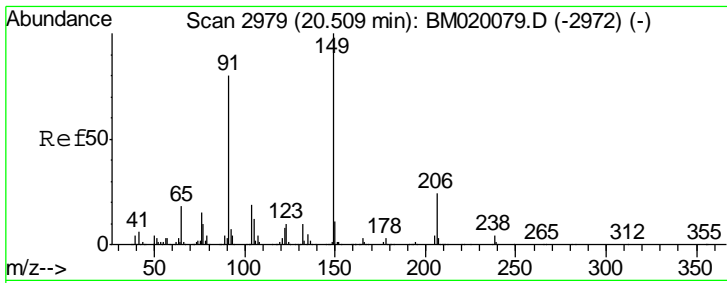
Tgt Ion	Resp	Lower	Upper
240	782410		
120	6.6	5.6	8.4
236	26.2	20.9	31.3



#79  
 Terphenyl-d14  
 Concen: 21.014 ng  
 RT: 19.80 min Scan# 2859  
 Delta R.T. -0.01 min  
 Lab File: BM020105.D  
 Acq: 02 May 2019 17:09

Tgt Ion	Resp	Lower	Upper
244	942630		
212	7.2	5.7	8.5
122	7.0	6.2	9.2

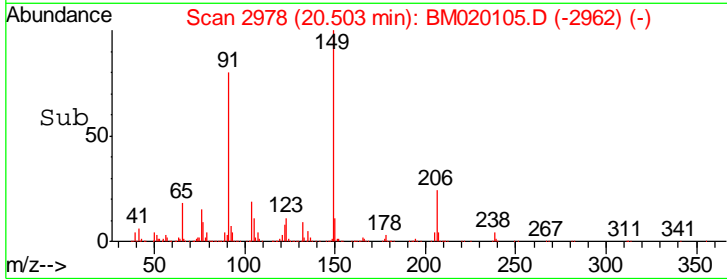
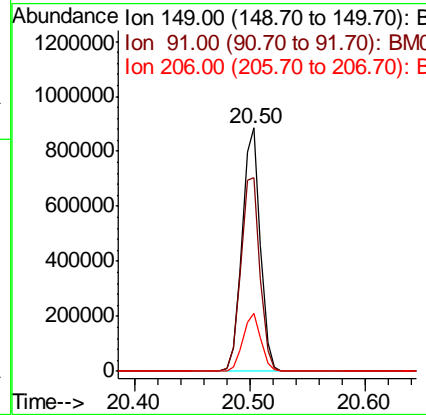
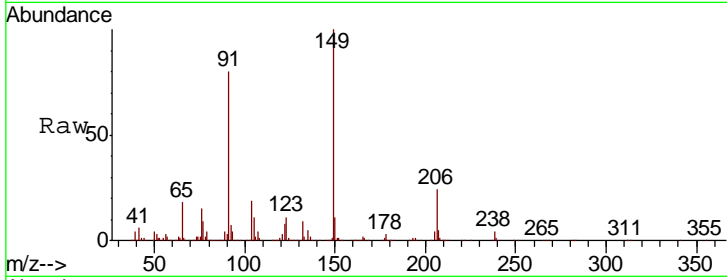




#80  
 Butylbenzylphthalate  
 Concen: 50.318 ng  
 RT: 20.50 min Scan# 2978  
 Delta R.T. -0.01 min  
 Lab File: BM020105.D  
 Acq: 02 May 2019 17:09

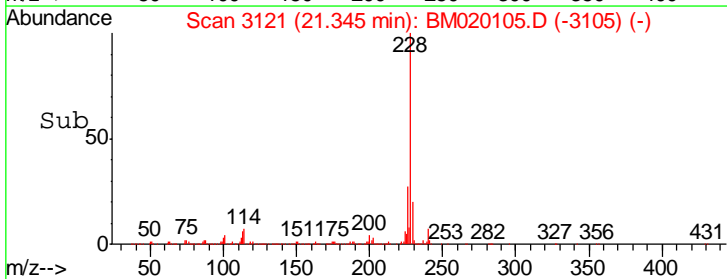
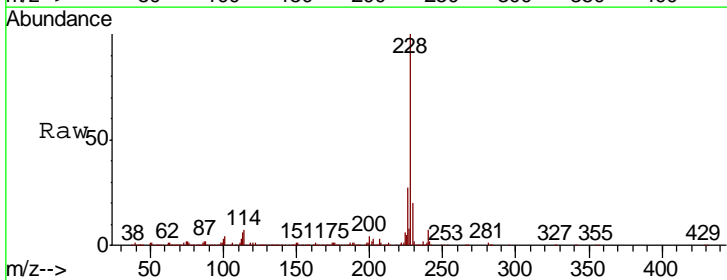
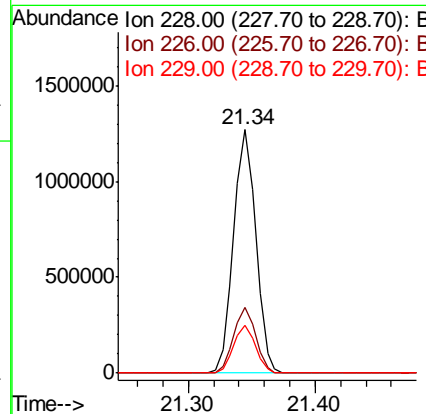
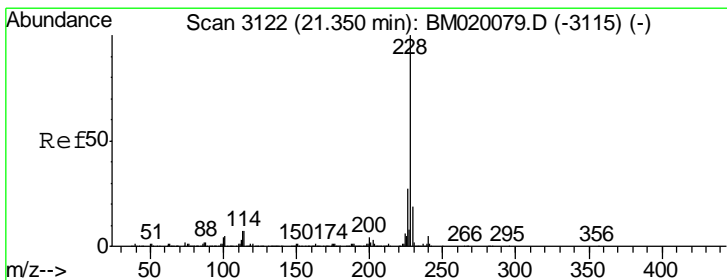
Instrument :  
 BNA\_M  
 ClientSampled :

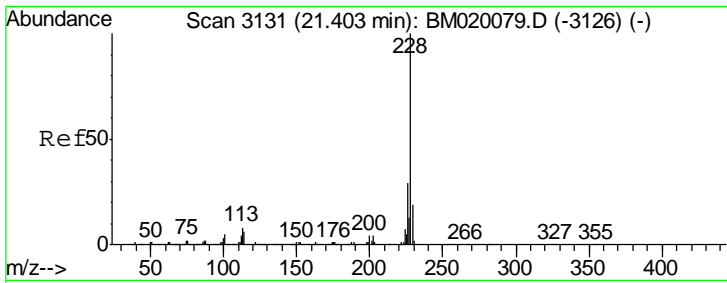
Tgt Ion	Resp	Lower	Upper
149	100		
91	79.7	63.8	95.8
206	24.0	18.9	28.3



#81  
 Benzo(a)anthracene  
 Concen: 28.121 ng  
 RT: 21.34 min Scan# 3121  
 Delta R.T. -0.01 min  
 Lab File: BM020105.D  
 Acq: 02 May 2019 17:09

Tgt Ion	Resp	Lower	Upper
228	100		
226	26.8	21.3	31.9
229	19.7	15.5	23.3



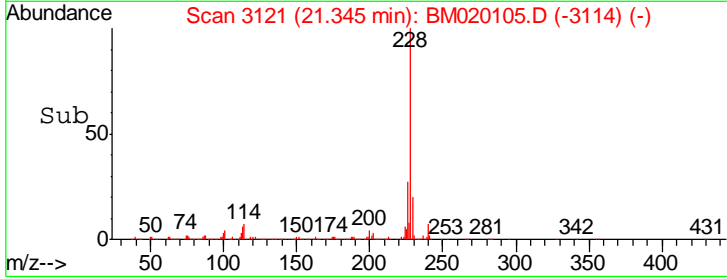
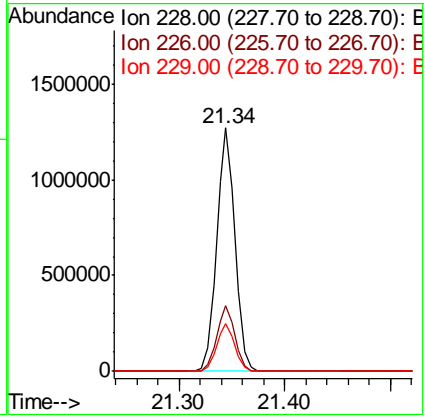
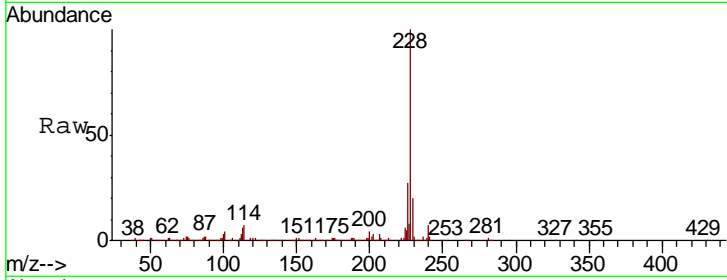


#83  
 Chrysene  
 Concen: 29.012 ng  
 RT: 21.34 min Scan# 3121  
 Delta R.T. -0.06 min  
 Lab File: BM020105.D  
 Acq: 02 May 2019 17:09

Instrument :  
 BNA\_M  
 ClientSampled :

Tgt Ion: 228 Resp: 1543843

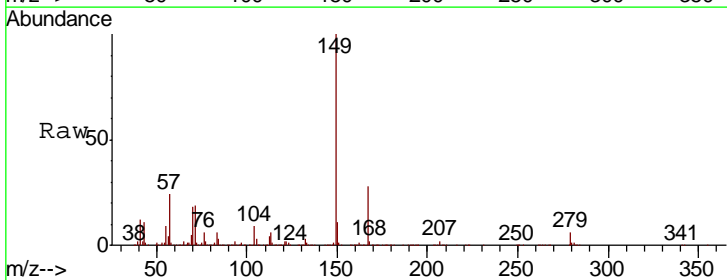
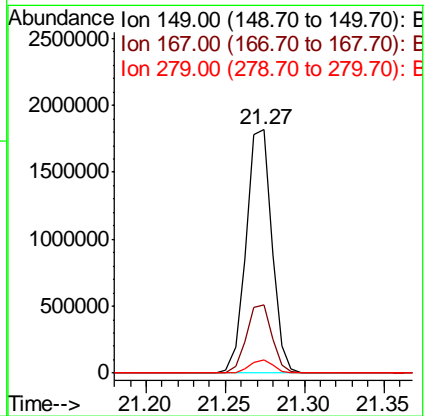
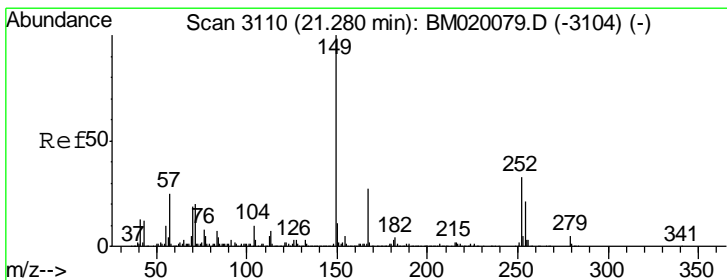
Ion	Ratio	Lower	Upper
228	100		
226	26.8	23.0	34.6
229	19.7	15.5	23.3



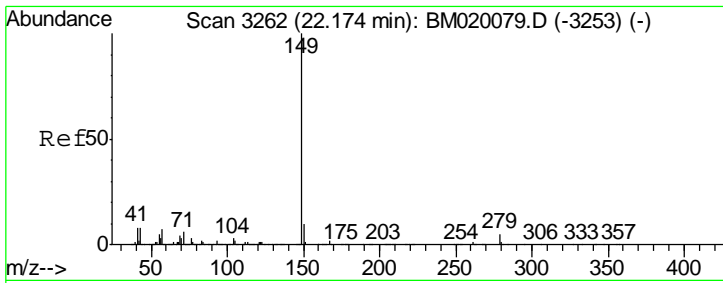
#84  
 Bis(2-ethylhexyl)phthalate  
 Concen: 68.952 ng  
 RT: 21.27 min Scan# 3109  
 Delta R.T. -0.01 min  
 Lab File: BM020105.D  
 Acq: 02 May 2019 17:09

Tgt Ion: 149 Resp: 2043884

Ion	Ratio	Lower	Upper
149	100		
167	28.1	21.8	32.8
279	5.6	4.2	6.2



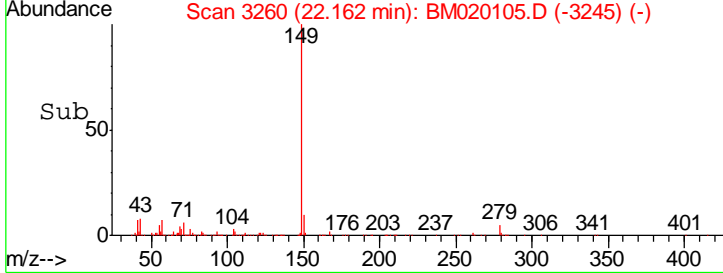
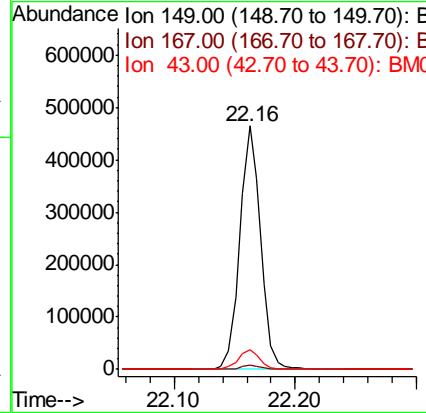
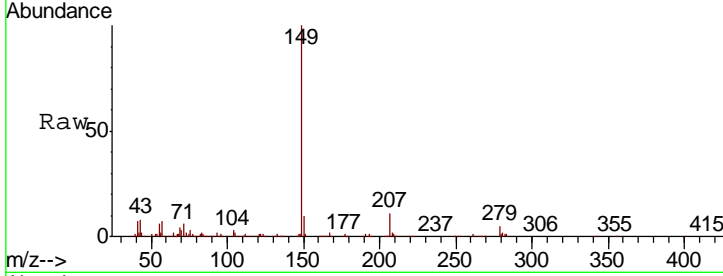




#85  
 Di-n-octyl phthalate  
 Concen: 11.270 ng  
 RT: 22.16 min Scan# 3260  
 Delta R.T. -0.01 min  
 Lab File: BM020105.D  
 Acq: 02 May 2019 17:09

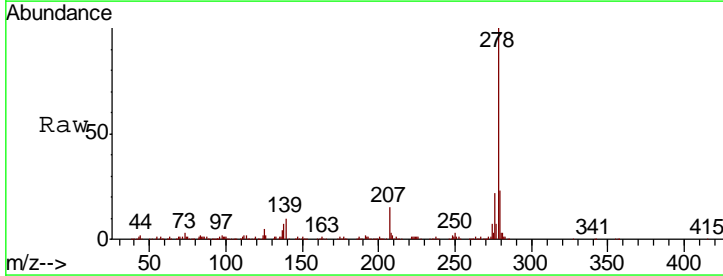
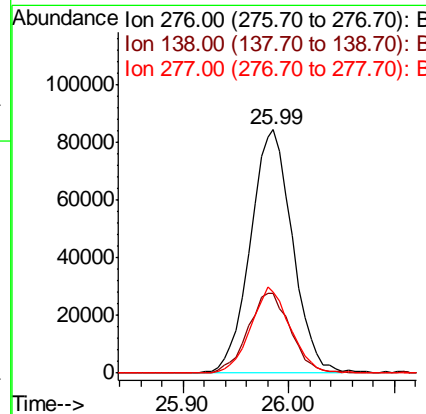
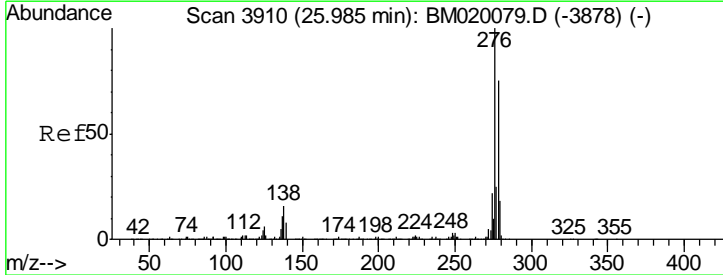
Instrument :  
 BNA\_M  
 ClientSampled :

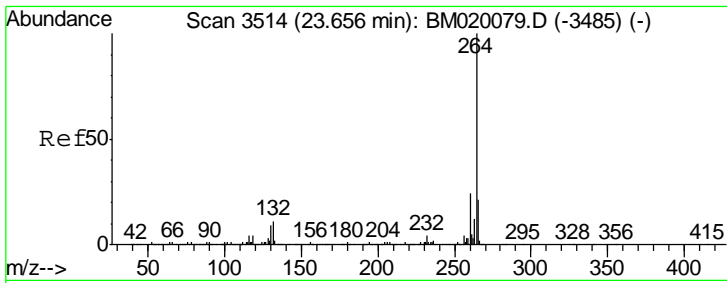
Tgt Ion	Resp	Lower	Upper
149	100		
167	1.5	1.3	1.9
43	7.9	6.5	9.7



#86  
 Indeno(1,2,3-cd)pyrene  
 Concen: 3.672 ng  
 RT: 25.99 min Scan# 3910  
 Delta R.T. 0.00 min  
 Lab File: BM020105.D  
 Acq: 02 May 2019 17:09

Tgt Ion	Resp	Lower	Upper
276	100		
138	33.4	0.0	0.0#
277	33.1	0.0	0.0#

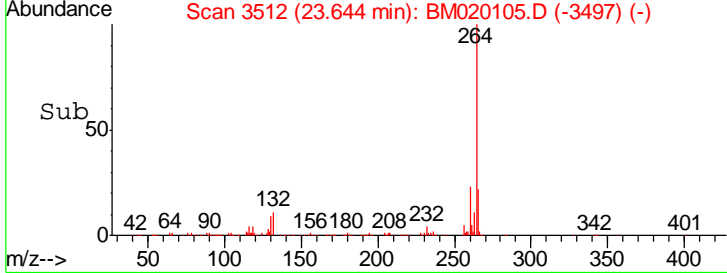
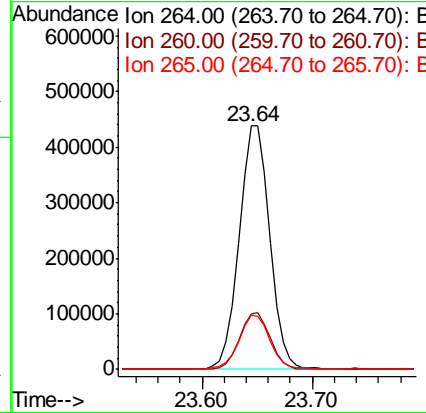
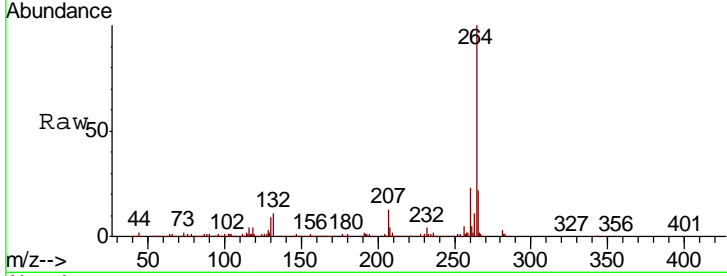




#87  
 Perylene-d12  
 Concen: 20.000 ng  
 RT: 23.64 min Scan# 3512  
 Delta R.T. -0.01 min  
 Lab File: BM020105.D  
 Acq: 02 May 2019 17:09

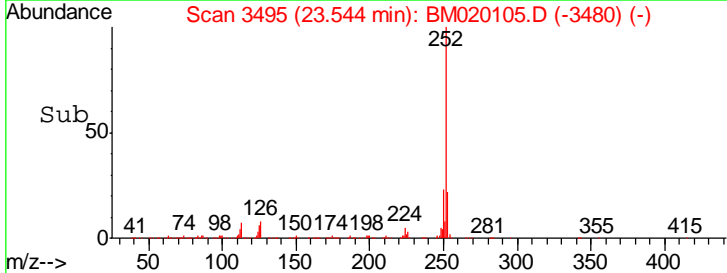
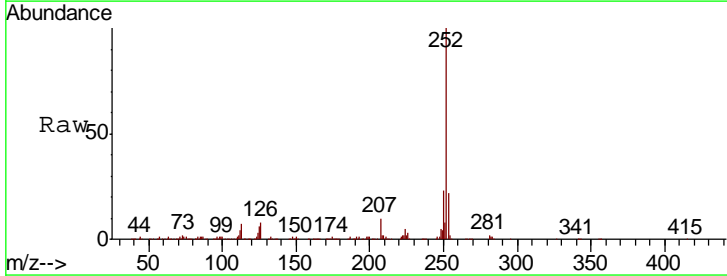
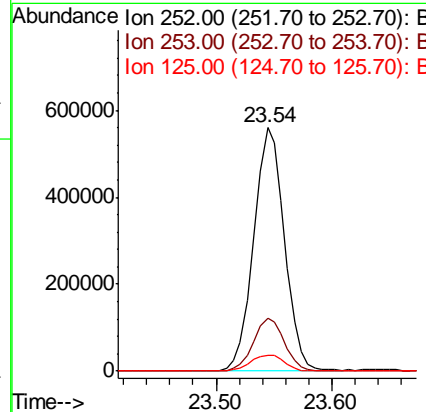
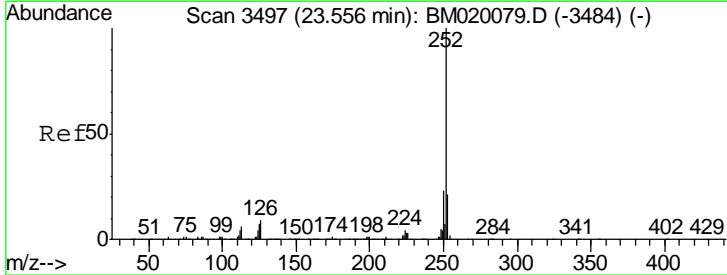
Instrument :  
 BNA\_M  
 ClientSampled :

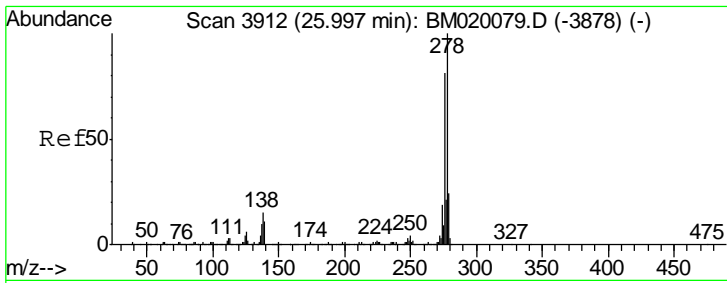
Tgt Ion	Resp	Lower	Upper
264	100		
260	22.8	19.2	28.8
265	22.0	16.9	25.3



#90  
 Benzo(a)pyrene  
 Concen: 20.292 ng  
 RT: 23.54 min Scan# 3495  
 Delta R.T. -0.01 min  
 Lab File: BM020105.D  
 Acq: 02 May 2019 17:09

Tgt Ion	Resp	Lower	Upper
252	100		
253	21.6	17.0	25.6
125	6.4	5.5	8.3

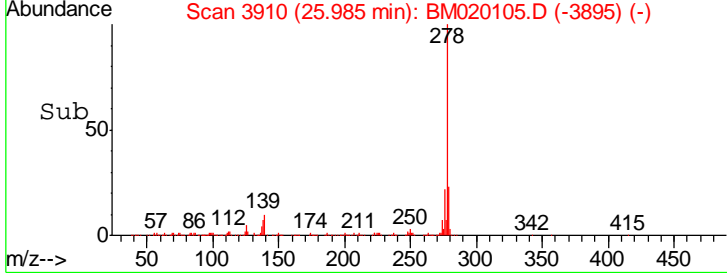
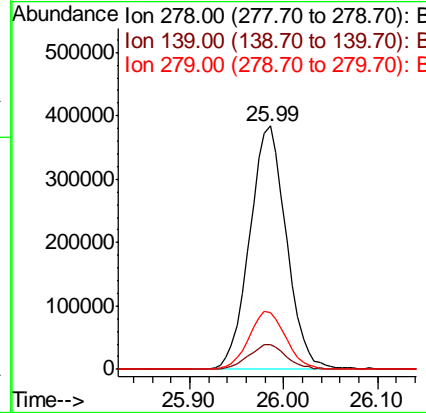
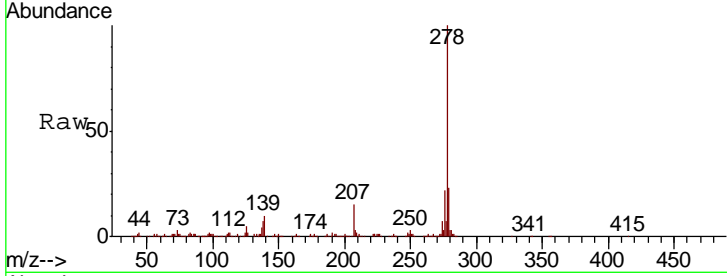




#91  
 Dibenzo(a,h)anthracene  
 Concen: 19.527 ng  
 RT: 25.99 min Scan# 3910  
 Delta R.T. -0.01 min  
 Lab File: BM020105.D  
 Acq: 02 May 2019 17:09

Instrument :  
 BNA\_M  
 ClientSampled :

Tgt Ion	Resp	Lower	Upper
278	1040628		
139	10.0	8.6	13.0
279	23.4	18.8	28.2



#92  
 Benzo(g,h,i)perylene  
 Concen: 10.787 ng  
 RT: 26.68 min Scan# 4028  
 Delta R.T. -0.02 min  
 Lab File: BM020105.D  
 Acq: 02 May 2019 17:09

Tgt Ion	Resp	Lower	Upper
276	545761		
277	23.2	18.4	27.6
138	14.4	11.1	16.7

