

Data Path : Z:\svoasrv\HPCHEM1\BNA_M\Data\BM050225\
 Data File : BM050090.D
 Acq On : 02 May 2025 17:57
 Operator : RC/JU
 Sample : Q1922-01
 Misc :
 ALS Vial : 13 Sample Multiplier: 1

Instrument :
 BNA_M
 ClientSampleId :
 MH-R

Quant Time: May 02 23:57:59 2025
 Quant Method : Z:\svoasrv\HPCHEM1\BNA_M\Methods\8270-BM042825.M
 Quant Title : ASP BNA STANDARDS FOR 5 POINT CALIBRATION
 QLast Update : Mon Apr 28 18:09:16 2025
 Response via : Initial Calibration

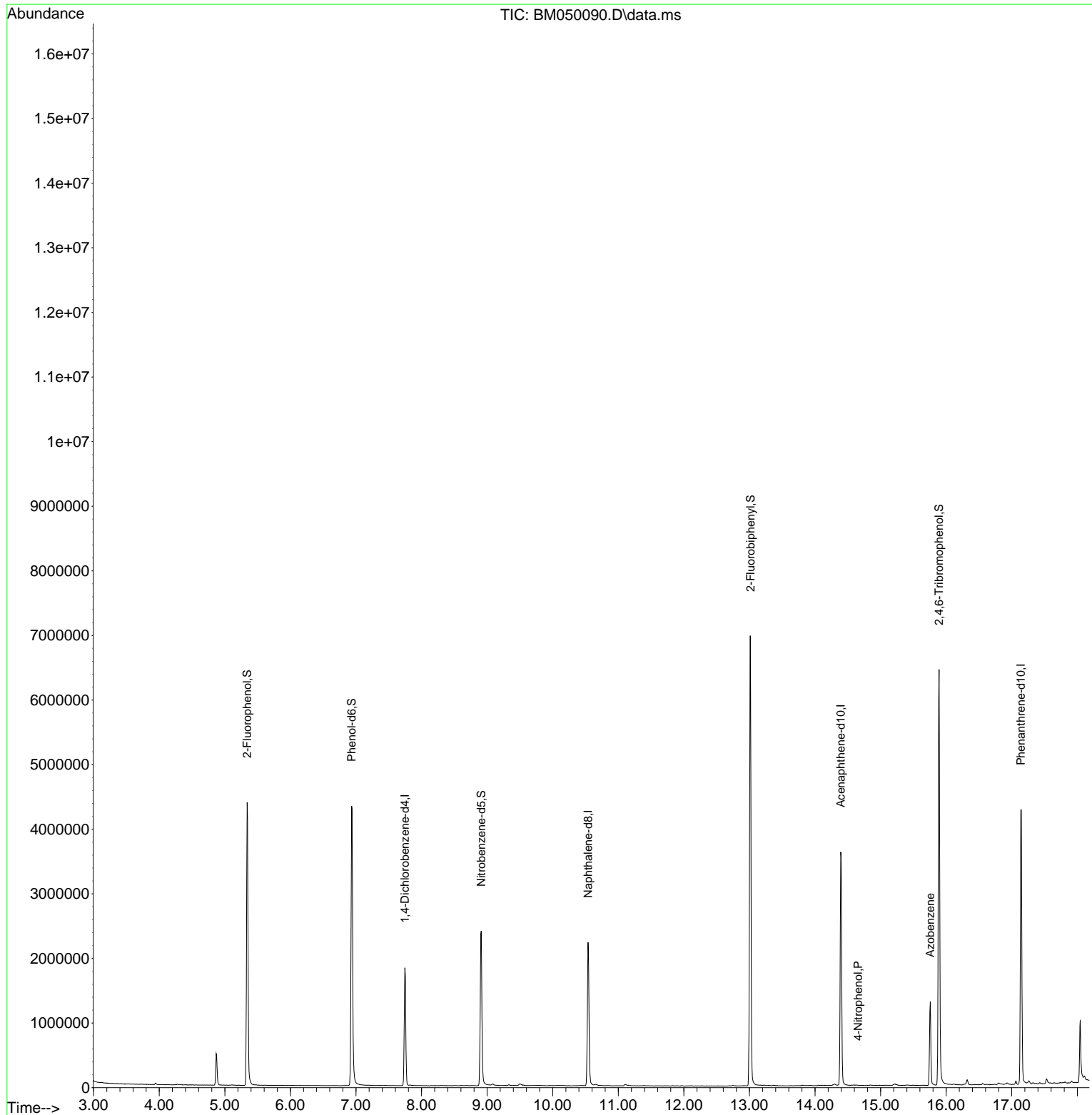
Compound	R.T.	QIon	Response	Conc	Units	Dev(Min)
Internal Standards						
1) 1,4-Dichlorobenzene-d4	7.745	152	544821	20.000	ng	-0.02
21) Naphthalene-d8	10.539	136	2004391	20.000	ng	-0.02
39) Acenaphthene-d10	14.392	164	1422032	20.000	ng	-0.02
64) Phenanthrene-d10	17.139	188	2846968	20.000	ng	-0.02
76) Chrysene-d12	21.386	240	1805172	20.000	ng	-0.01
86) Perylene-d12	24.380	264	1700690	20.000	ng	-0.02
System Monitoring Compounds						
5) 2-Fluorophenol	5.340	112	2109829	67.811	ng	-0.02
7) Phenol-d6	6.934	99	2899121	74.136	ng	-0.02
23) Nitrobenzene-d5	8.910	82	1545776	38.002	ng	-0.02
42) 2,4,6-Tribromophenol	15.892	330	1555020	73.955	ng	-0.01
45) 2-Fluorobiphenyl	13.016	172	4108377	34.177	ng	-0.02
79) Terphenyl-d14	19.768	244	6733969	55.200	ng	-0.01
Target Compounds						
56) 4-Nitrophenol	14.657	139	56	4.537	ng	# 1
63) Azobenzene	15.757	77	348584	4.247	ng	# 1
84) Bis(2-ethylhexyl)phtha...	21.286	149	162836	2.296	ng	99

(#) = qualifier out of range (m) = manual integration (+) = signals summed

Data Path : Z:\svoasrv\HPCHEM1\BNA_M\Data\BM050225\
 Data File : BM050090.D
 Acq On : 02 May 2025 17:57
 Operator : RC/JU
 Sample : Q1922-01
 Misc :
 ALS Vial : 13 Sample Multiplier: 1

Instrument :
 BNA_M
 ClientSampleId :
 MH-R

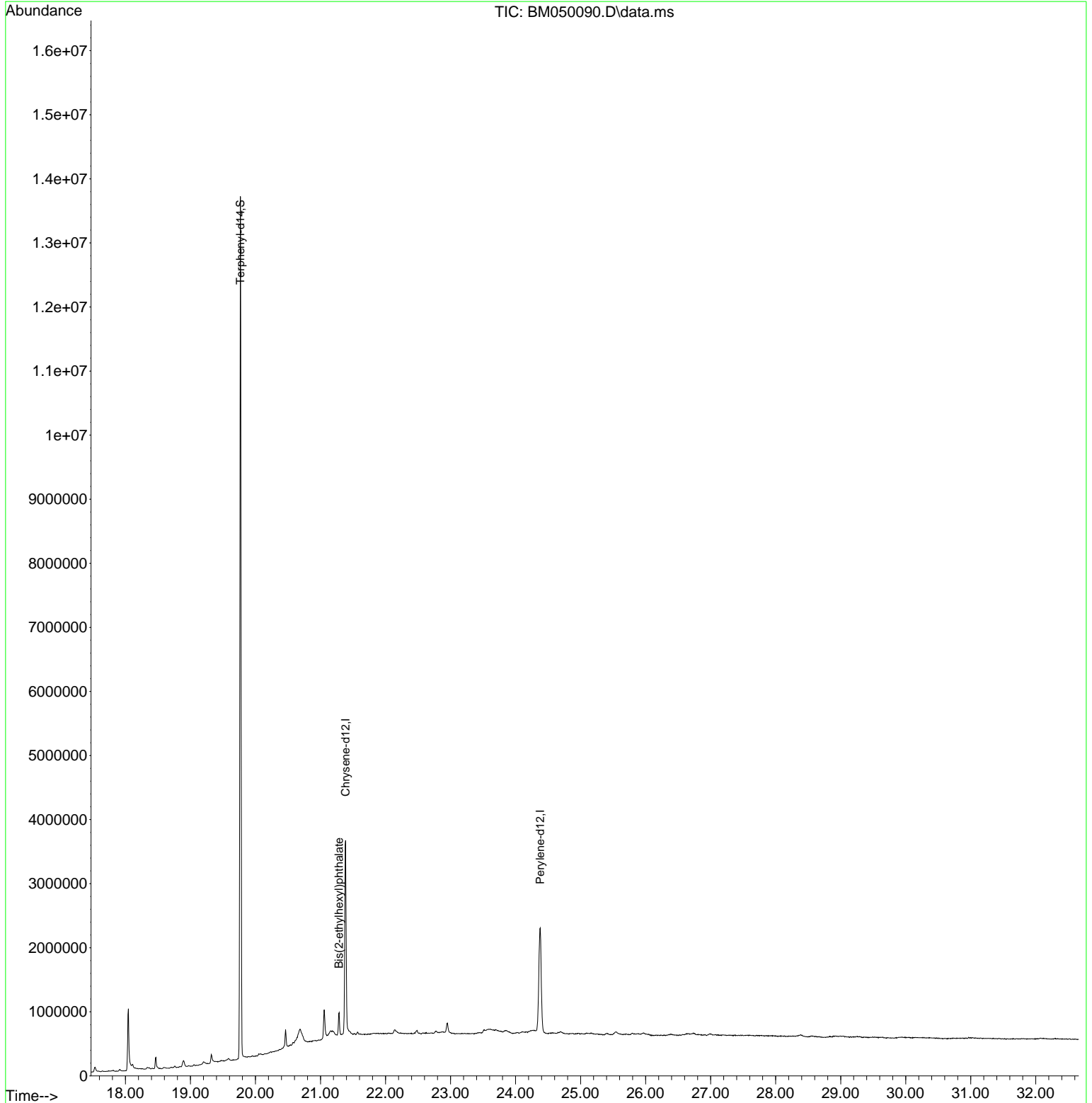
Quant Time: May 02 23:57:59 2025
 Quant Method : Z:\svoasrv\HPCHEM1\BNA_M\Methods\8270-BM042825.M
 Quant Title : ASP BNA STANDARDS FOR 5 POINT CALIBRATION
 QLast Update : Mon Apr 28 18:09:16 2025
 Response via : Initial Calibration

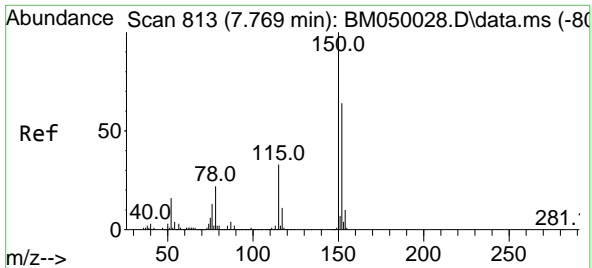


Data Path : Z:\svoasrv\HPCHEM1\BNA_M\Data\BM050225\
Data File : BM050090.D
Acq On : 02 May 2025 17:57
Operator : RC/JU
Sample : Q1922-01
Misc :
ALS Vial : 13 Sample Multiplier: 1

Instrument :
BNA_M
ClientSampleId :
MH-R

Quant Time: May 02 23:57:59 2025
Quant Method : Z:\svoasrv\HPCHEM1\BNA_M\Methods\8270-BM042825.M
Quant Title : ASP BNA STANDARDS FOR 5 POINT CALIBRATION
QLast Update : Mon Apr 28 18:09:16 2025
Response via : Initial Calibration

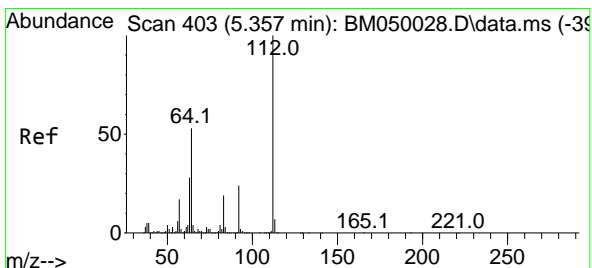
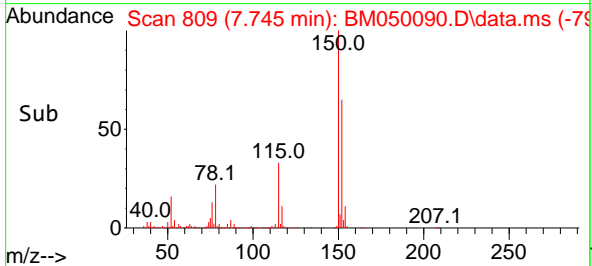
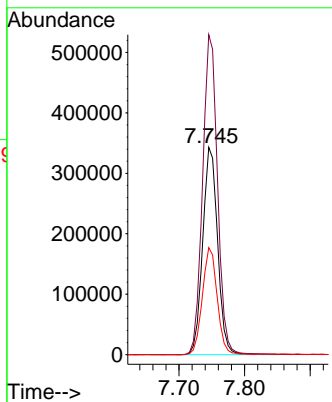
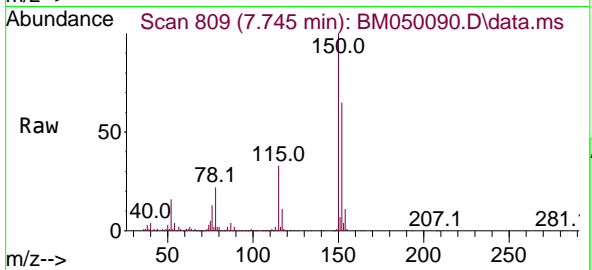




#1
 1,4-Dichlorobenzene-d4
 Concen: 20.000 ng
 RT: 7.745 min Scan# 809
 Delta R.T. -0.024 min
 Lab File: BM050090.D
 Acq: 02 May 2025 17:57

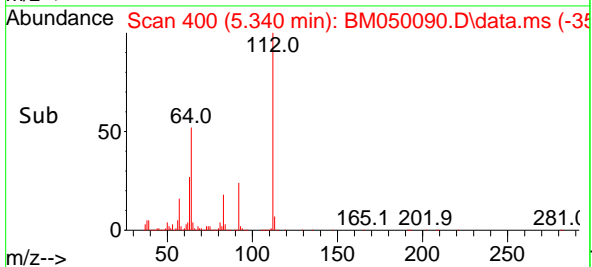
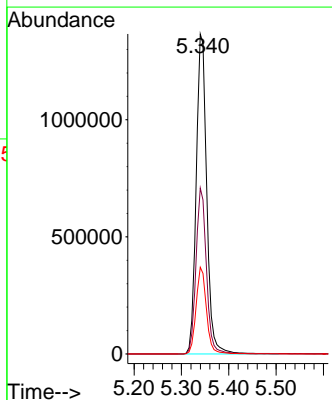
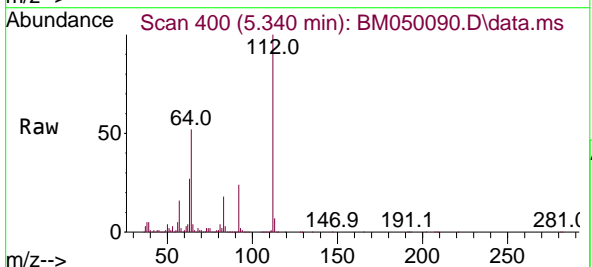
Instrument :
 BNA_M
 ClientSampleId :
 MH-R

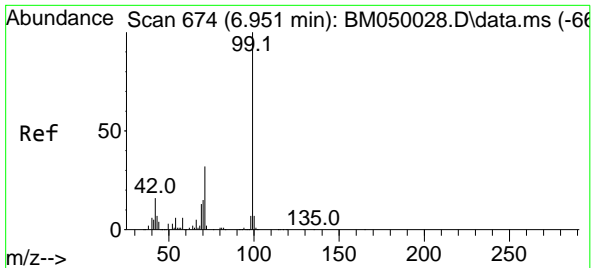
Tgt Ion:152 Resp: 544821
 Ion Ratio Lower Upper
 152 100
 150 154.3 124.1 186.1
 115 51.6 41.2 61.8



#5
 2-Fluorophenol
 Concen: 67.811 ng
 RT: 5.340 min Scan# 400
 Delta R.T. -0.018 min
 Lab File: BM050090.D
 Acq: 02 May 2025 17:57

Tgt Ion:112 Resp: 2109829
 Ion Ratio Lower Upper
 112 100
 64 51.8 42.6 64.0
 63 27.1 22.2 33.4

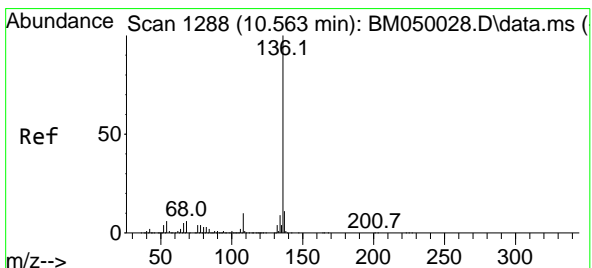
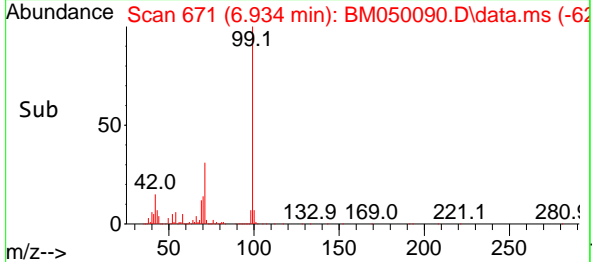
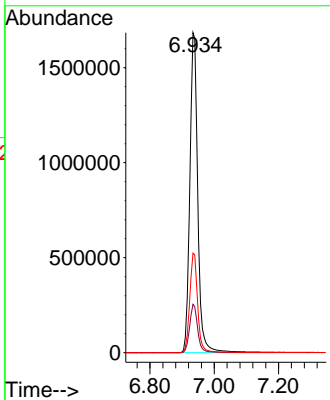
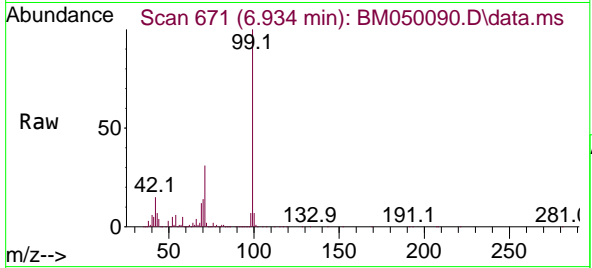




#7
 Phenol-d6
 Concen: 74.136 ng
 RT: 6.934 min Scan# 61
 Delta R.T. -0.018 min
 Lab File: BM050090.D
 Acq: 02 May 2025 17:57

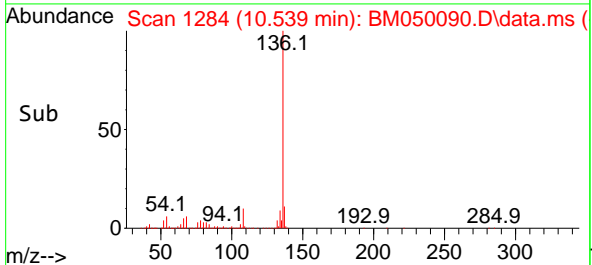
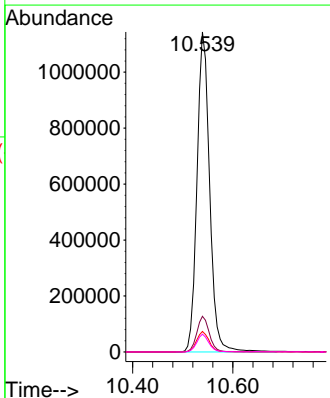
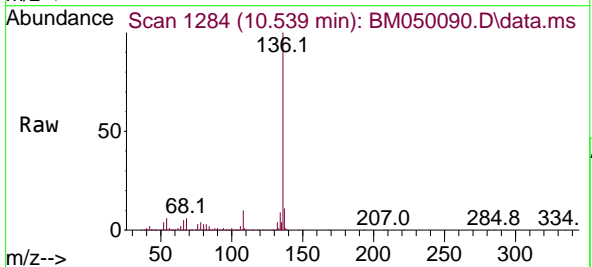
Instrument :
 BNA_M
 ClientSampleId :
 MH-R

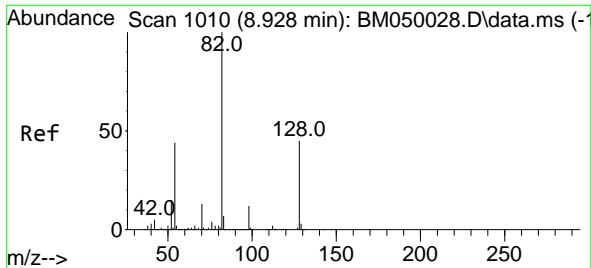
Tgt Ion: 99 Resp: 2899121
 Ion Ratio Lower Upper
 99 100
 42 15.1 13.0 19.4
 71 31.1 25.6 38.4



#21
 Naphthalene-d8
 Concen: 20.000 ng
 RT: 10.539 min Scan# 1284
 Delta R.T. -0.024 min
 Lab File: BM050090.D
 Acq: 02 May 2025 17:57

Tgt Ion: 136 Resp: 2004391
 Ion Ratio Lower Upper
 136 100
 137 11.1 8.9 13.3
 54 6.4 5.1 7.7
 68 5.6 4.4 6.6



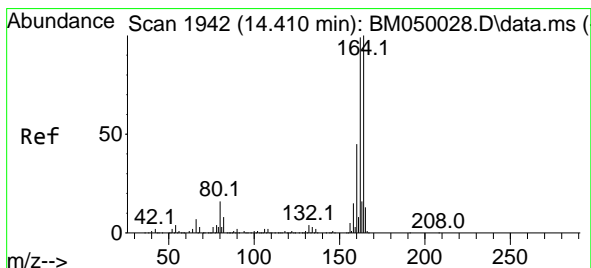
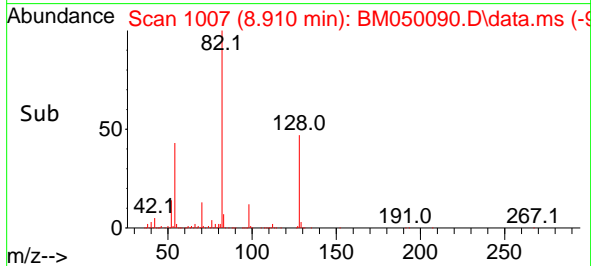
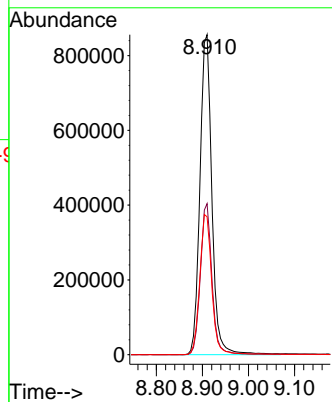
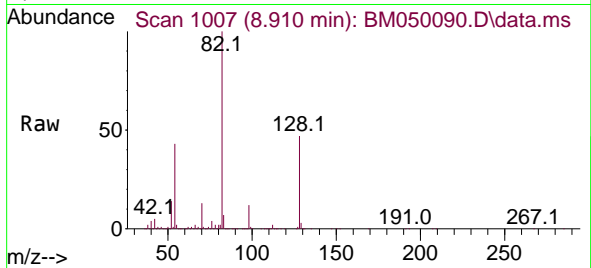


#23
 Nitrobenzene-d5
 Concen: 38.002 ng
 RT: 8.910 min Scan# 1010
 Delta R.T. -0.018 min
 Lab File: BM050090.D
 Acq: 02 May 2025 17:57

Instrument :
 BNA_M
 ClientSampleId :
 MH-R

Tgt Ion: 82 Resp: 1545776

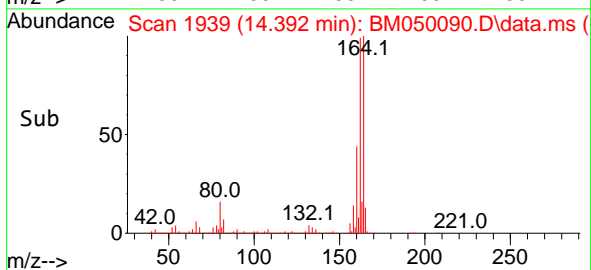
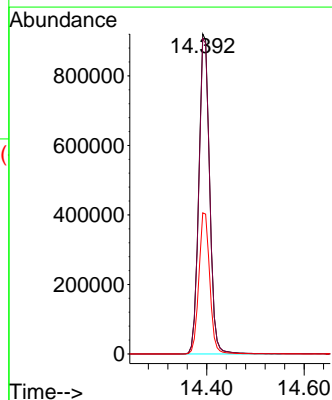
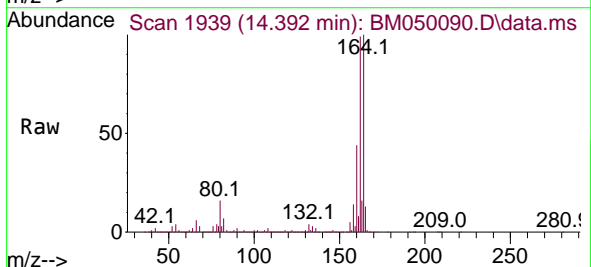
Ion	Ratio	Lower	Upper
82	100		
128	47.2	35.7	53.5
54	43.1	35.4	53.2

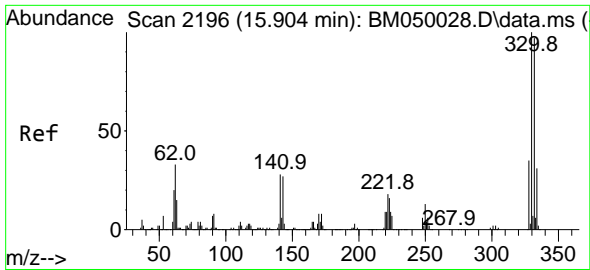


#39
 Acenaphthene-d10
 Concen: 20.000 ng
 RT: 14.392 min Scan# 1939
 Delta R.T. -0.018 min
 Lab File: BM050090.D
 Acq: 02 May 2025 17:57

Tgt Ion: 164 Resp: 1422032

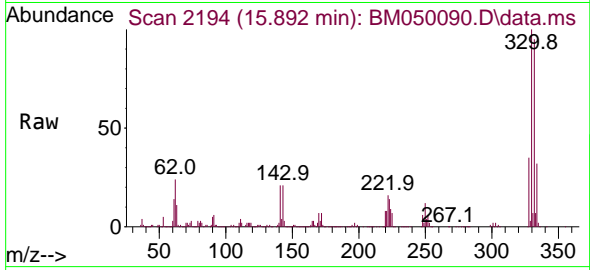
Ion	Ratio	Lower	Upper
164	100		
162	98.6	79.4	119.0
160	44.1	36.2	54.4



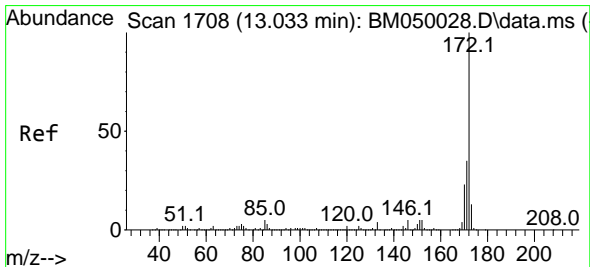
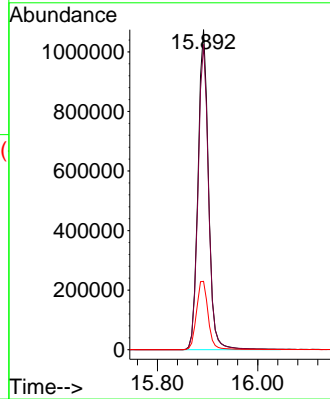
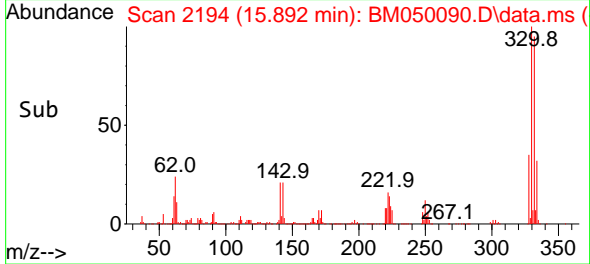


#42
 2,4,6-Tribromophenol
 Concen: 73.955 ng
 RT: 15.892 min Scan# 2194
 Delta R.T. -0.012 min
 Lab File: BM050090.D
 Acq: 02 May 2025 17:57

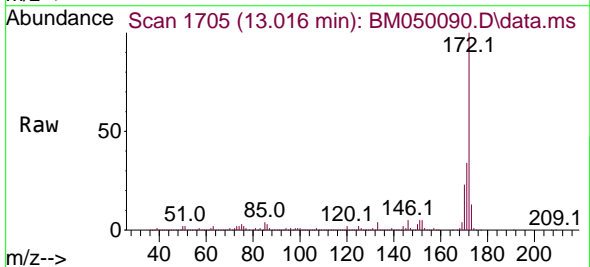
Instrument :
 BNA_M
 ClientSampleId :
 MH-R



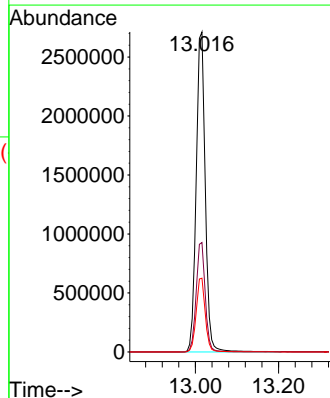
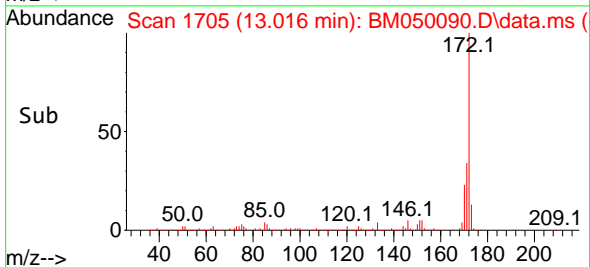
Tgt Ion:330 Resp: 1555020
 Ion Ratio Lower Upper
 330 100
 332 95.9 77.3 115.9
 141 23.7 22.5 33.7

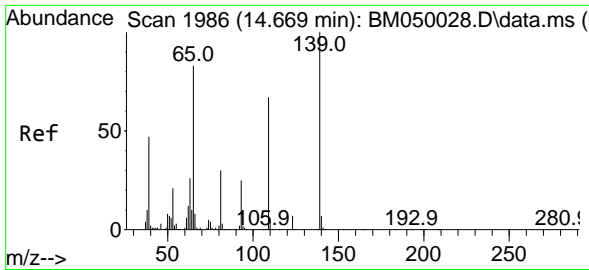


#45
 2-Fluorobiphenyl
 Concen: 34.177 ng
 RT: 13.016 min Scan# 1705
 Delta R.T. -0.018 min
 Lab File: BM050090.D
 Acq: 02 May 2025 17:57



Tgt Ion:172 Resp: 4108377
 Ion Ratio Lower Upper
 172 100
 171 34.2 27.8 41.6
 170 23.0 18.6 28.0

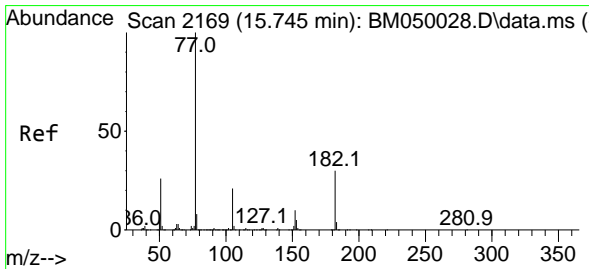
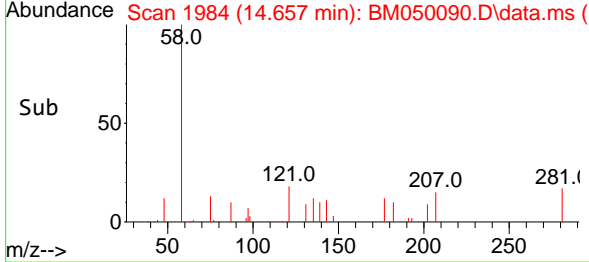
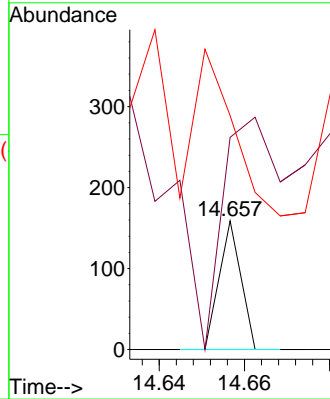
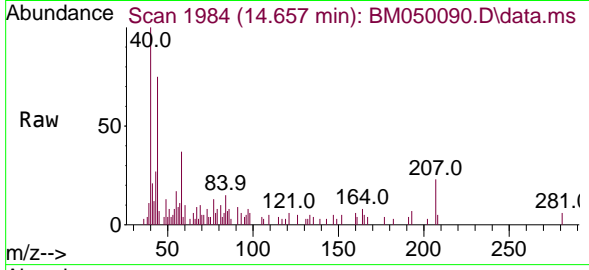




#56
 4-Nitrophenol
 Concen: 4.537 ng
 RT: 14.657 min Scan# 11
 Delta R.T. -0.012 min
 Lab File: BM050090.D
 Acq: 02 May 2025 17:57

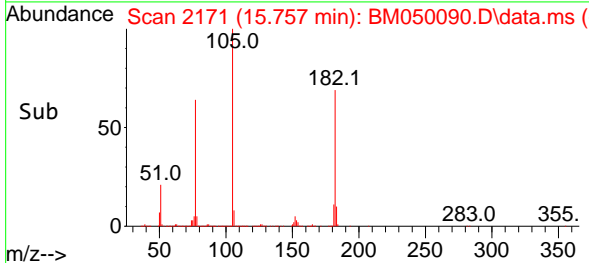
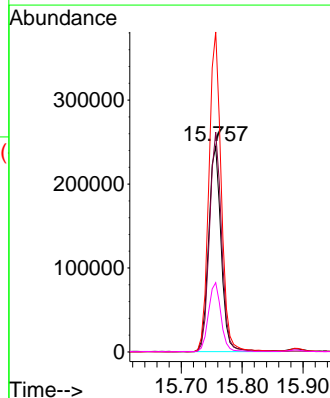
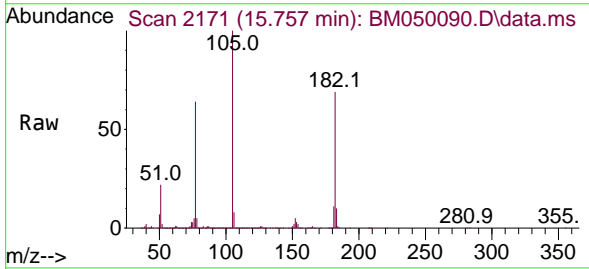
Instrument :
 BNA_M
 ClientSampleId :
 MH-R

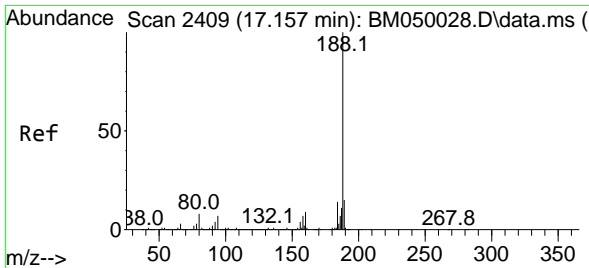
Tgt Ion	Resp	Lower	Upper
139	100		
109	164.8	47.0	87.0#
65	181.8	64.3	104.3#



#63
 Azobenzene
 Concen: 4.247 ng
 RT: 15.757 min Scan# 2171
 Delta R.T. 0.012 min
 Lab File: BM050090.D
 Acq: 02 May 2025 17:57

Tgt Ion	Resp	Lower	Upper
77	100		
182	106.9	10.5	50.5#
105	155.6	1.1	41.1#
51	33.7	6.3	46.3



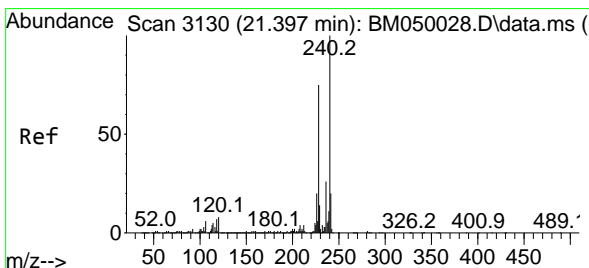
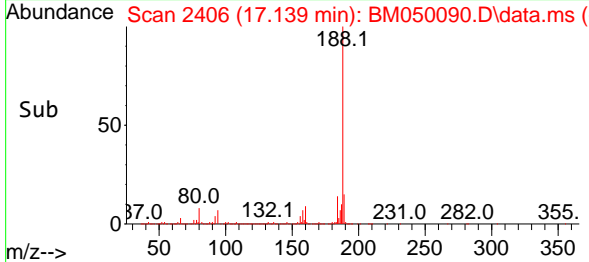
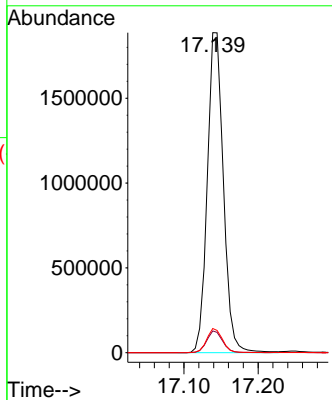
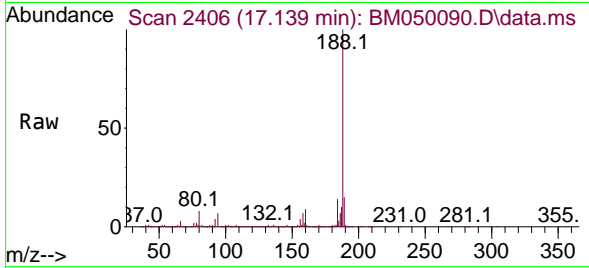


#64
 Phenanthrene-d10
 Concen: 20.000 ng
 RT: 17.139 min Scan# 24
 Delta R.T. -0.018 min
 Lab File: BM050090.D
 Acq: 02 May 2025 17:57

Instrument :
 BNA_M
 ClientSampleId :
 MH-R

Tgt Ion:188 Resp: 2846968

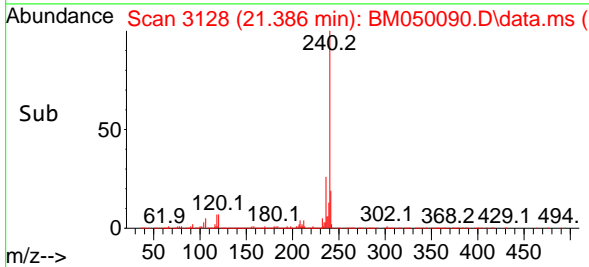
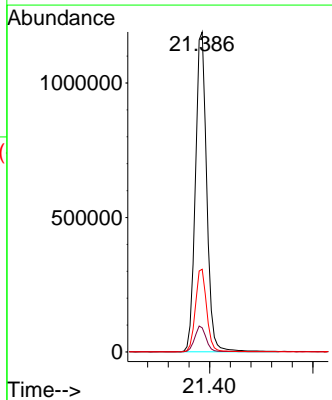
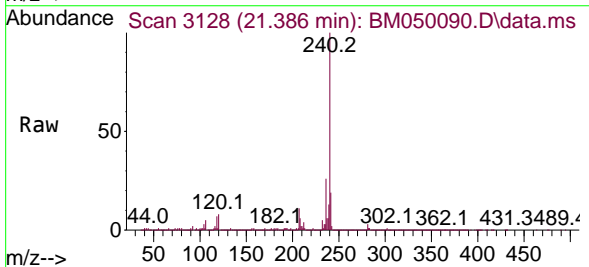
Ion	Ratio	Lower	Upper
188	100		
94	6.8	5.7	8.5
80	7.5	6.2	9.4

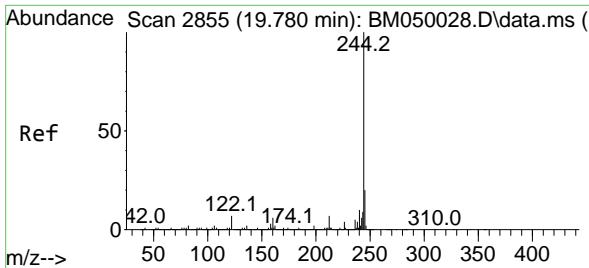


#76
 Chrysene-d12
 Concen: 20.000 ng
 RT: 21.386 min Scan# 3128
 Delta R.T. -0.011 min
 Lab File: BM050090.D
 Acq: 02 May 2025 17:57

Tgt Ion:240 Resp: 1805172

Ion	Ratio	Lower	Upper
240	100		
120	7.5	6.5	9.7
236	25.9	20.9	31.3



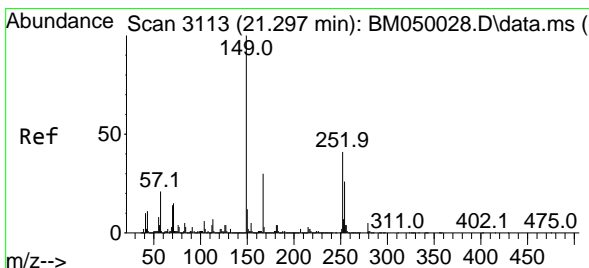
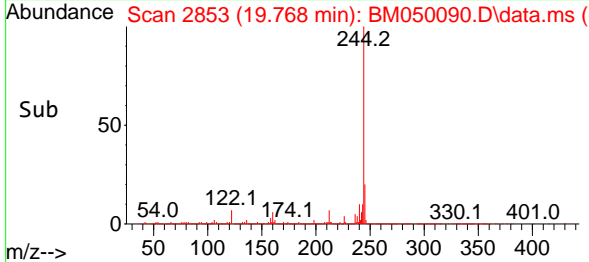
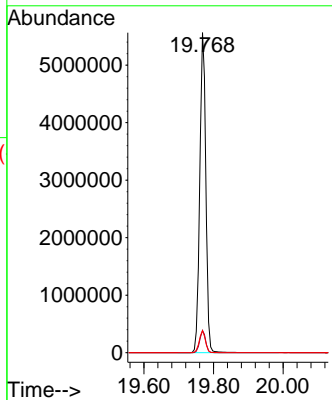
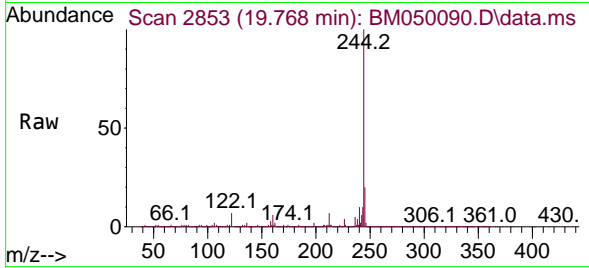


#79
 Terphenyl-d14
 Concen: 55.200 ng
 RT: 19.768 min Scan# 21
 Delta R.T. -0.012 min
 Lab File: BM050090.D
 Acq: 02 May 2025 17:57

Instrument :
 BNA_M
 ClientSampleId :
 MH-R

Tgt Ion:244 Resp: 6733969

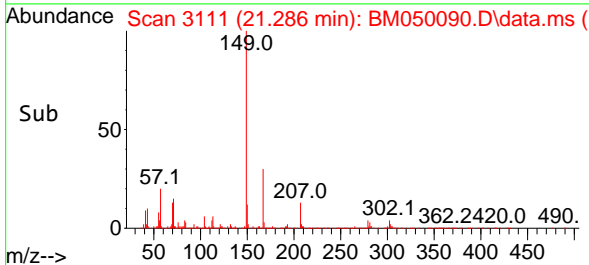
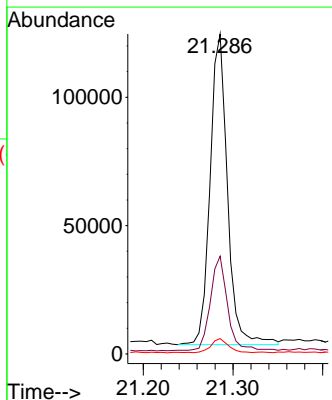
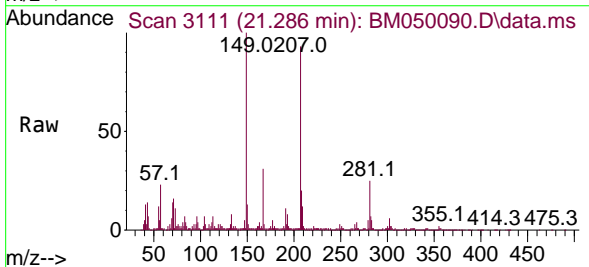
Ion	Ratio	Lower	Upper
244	100		
212	7.0	5.6	8.4
122	6.9	5.6	8.4

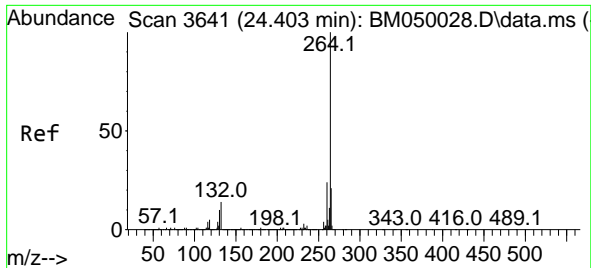


#84
 Bis(2-ethylhexyl)phthalate
 Concen: 2.296 ng
 RT: 21.286 min Scan# 3111
 Delta R.T. -0.012 min
 Lab File: BM050090.D
 Acq: 02 May 2025 17:57

Tgt Ion:149 Resp: 162836

Ion	Ratio	Lower	Upper
149	100		
167	30.5	24.1	36.1
279	4.8	3.9	5.9





#86

Perylene-d12

Concen: 20.000 ng

RT: 24.380 min Scan# 30

Delta R.T. -0.024 min

Lab File: BM050090.D

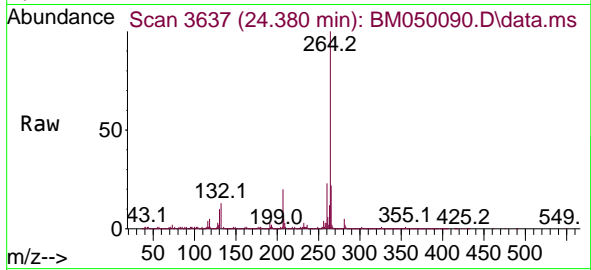
Acq: 02 May 2025 17:57

Instrument :

BNA_M

ClientSampleId :

MH-R



Tgt Ion:264 Resp: 1700690

Ion Ratio Lower Upper

264 100

260 23.3 18.8 28.2

265 22.1 17.0 25.4

