

Data Path : Z:\HPCHEM1\BNA M\DATA\BM050318\
 Data File : BM014946.D
 Acq On : 03 May 2018 16:58
 Operator : SJ/JU
 Sample : J2554-12
 Misc :
 ALS Vial : 5 Sample Multiplier: 1

Instrument :
 BNA_M
 ClientSampled :
 C0AG0

Integration Parameters: LSCINT.P

Integrator: RTE
 Smoothing : OFF
 Sampling : 1
 Start Thrs: 0.2
 Stop Thrs : 0

Filtering: 5
 Min Area: 1 % of largest Peak
 Max Peaks: 100
 Peak Location: TOP

If leading or trailing edge < 100 prefer < Baseline drop else tangent >
 Peak separation: 5

Method : Z:\HPCHEM1\BNA M\METHODS\SOM-EPA-BM041918.M
 Title : SVOA CALIBRATION

Signal : TIC

peak #	R.T. min	first scan	max scan	last scan	PK TY	peak height	corr. area	corr. % max.	% of total
1	3.334	4	8	15	rVV	2672398	3338348	73.64%	4.865%
2	3.393	15	18	29	rVB	82917	133141	2.94%	0.194%
3	3.640	56	60	67	rVB	74507	103173	2.28%	0.150%
4	4.122	137	142	147	rVB	31081	46898	1.03%	0.068%
5	4.228	155	160	169	rVB	150998	210920	4.65%	0.307%
6	5.481	367	373	381	rVB	100273	162955	3.59%	0.237%
7	6.504	538	547	559	rBV2	27742	58920	1.30%	0.086%
8	7.616	729	736	753	rBV	1133826	1998605	44.08%	2.912%
9	7.793	759	766	778	rBV	916933	1491134	32.89%	2.173%
10	8.010	796	803	811	rBV	1166362	1919958	42.35%	2.798%
11	8.493	878	885	899	rBV	1434240	2357759	52.01%	3.436%
12	9.187	997	1003	1015	rBV	922634	1540935	33.99%	2.246%
13	9.675	1078	1086	1093	rBV	1057003	1798265	39.67%	2.621%
14	10.034	1142	1147	1152	rVB	34021	48264	1.06%	0.070%
15	10.404	1200	1210	1223	rBV	810272	1403785	30.96%	2.046%
16	10.939	1294	1301	1314	rBV	1219676	2052922	45.28%	2.992%
17	11.334	1360	1368	1377	rBV	1894207	3188469	70.33%	4.646%
18	11.457	1382	1389	1401	rBV	997593	1776524	39.19%	2.589%
19	13.892	1797	1803	1809	rBV	40985	57774	1.27%	0.084%
20	14.486	1895	1904	1908	rBV	2022085	2767016	61.03%	4.032%
21	14.533	1908	1912	1917	rVB	522499	719182	15.86%	1.048%
22	14.798	1950	1957	1968	rBV	2285995	3405520	75.12%	4.963%
23	14.945	1978	1982	1988	rVB	136821	174738	3.85%	0.255%
24	15.098	2001	2008	2016	rBV2	2344253	3620207	79.85%	5.276%
25	15.257	2026	2035	2051	rBV	741720	1189151	26.23%	1.733%
26	15.557	2082	2086	2094	rVB2	28891	47313	1.04%	0.069%
27	15.845	2131	2135	2138	rBV	39211	48390	1.07%	0.071%
28	15.886	2138	2142	2147	rVB	167596	205255	4.53%	0.299%
29	16.074	2167	2174	2185	rBV	2857372	4117726	90.83%	6.001%
30	16.174	2185	2191	2202	rBV	698379	975844	21.52%	1.422%
31	16.286	2202	2210	2212	rBV	38223	78701	1.74%	0.115%
32	16.739	2282	2287	2295	rBV	129989	211361	4.66%	0.308%
33	17.333	2378	2388	2394	rBV3	52337	88816	1.96%	0.129%
34	17.521	2415	2420	2425	rBV	69623	99507	2.19%	0.145%

Data Path : Z:\HPCHEM1\BNA M\DATA\BM050318\
 Data File : BM014946.D
 Acq On : 03 May 2018 16:58
 Operator : SJ/JU
 Sample : J2554-12
 Misc :
 ALS Vial : 5 Sample Multiplier: 1

Instrument :
 BNA_M
 ClientSampleId :
 C0AG0

Integration Parameters: LSCINT.P
 Integrator: RTE
 Smoothing : OFF Filtering: 5
 Sampling : 1 Min Area: 1 % of largest Peak
 Start Thrs: 0.2 Max Peaks: 100
 Stop Thrs : 0 Peak Location: TOP

If leading or trailing edge < 100 prefer < Baseline drop else tangent >
 Peak separation: 5

Method : Z:\HPCHEM1\BNA M\METHODS\SOM-EPA-BM041918.M
 Title : SVOA CALIBRATION

35	17.810	2462	2469	2474	rBV	2708484	3807669	83.99%	5.549%
36	17.851	2474	2476	2480	rVV	76414	94503	2.08%	0.138%
37	17.910	2480	2486	2498	rVB	2634346	3915426	86.37%	5.706%
38	18.639	2605	2610	2620	rBV	601261	899408	19.84%	1.311%
39	19.815	2806	2810	2816	rVB	174192	241994	5.34%	0.353%
40	19.874	2816	2820	2831	rBV	266149	388382	8.57%	0.566%
41	20.145	2860	2866	2878	rBV	3178030	4533560	100.00%	6.607%
42	21.556	3102	3106	3115	rBV	721314	1027989	22.68%	1.498%
43	21.898	3158	3164	3169	rBV	2918617	4010083	88.45%	5.844%
44	24.215	3552	3558	3574	rVB	2038292	4406893	97.21%	6.422%
45	24.374	3578	3585	3593	rVV	1888674	3858834	85.12%	5.623%

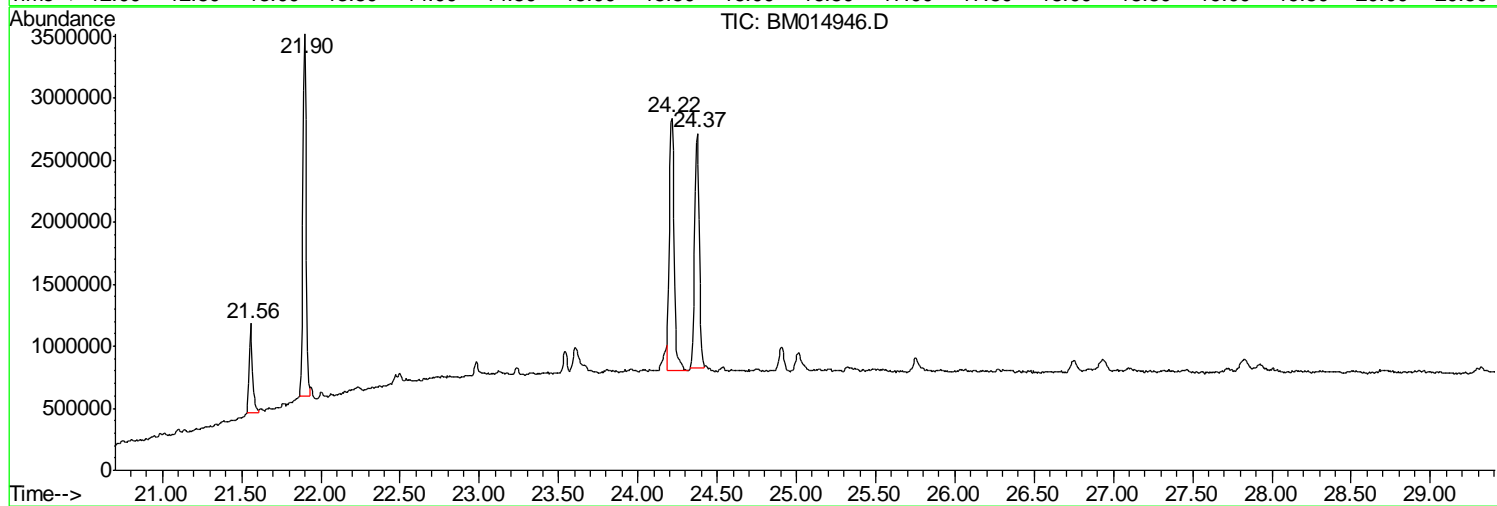
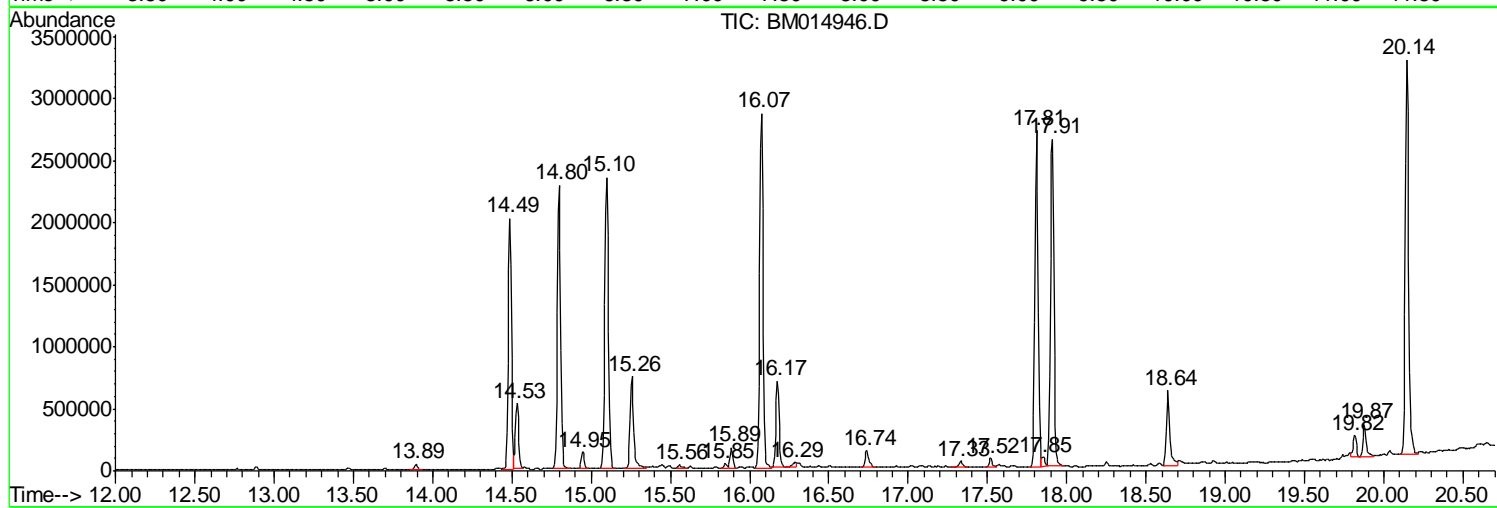
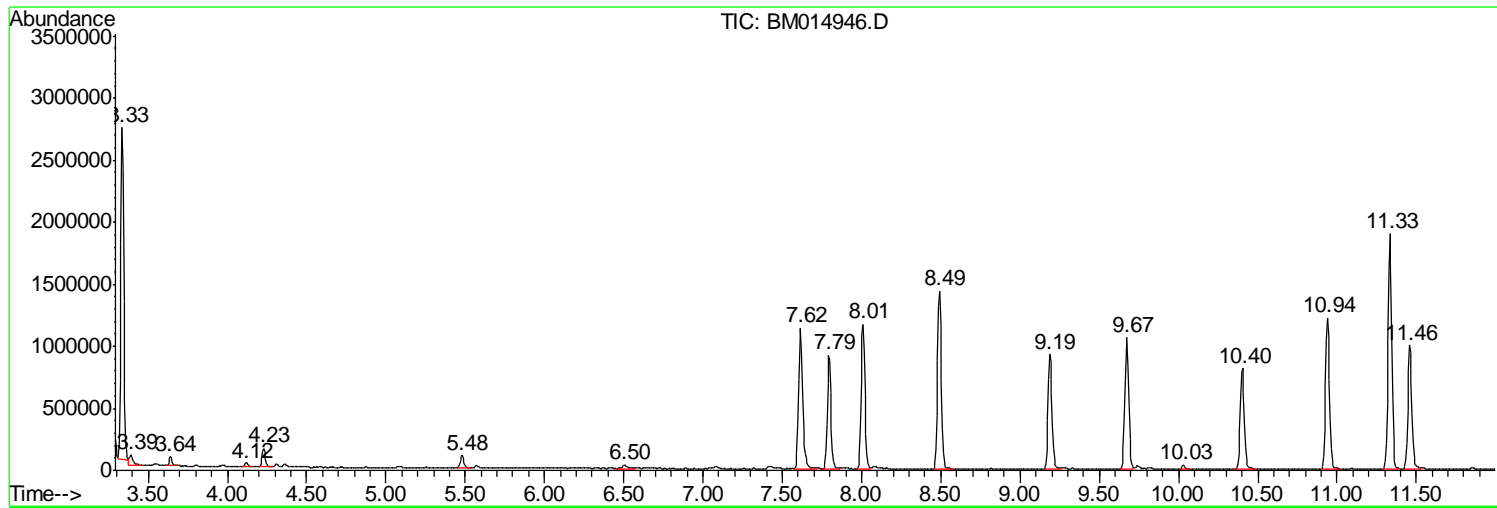
Sum of corrected areas: 68622217

Data Path : Z:\HPCHEM1\BNA M\DATA\BM050318\
 Data File : BM014946.D
 Acq On : 03 May 2018 16:58
 Operator : SJ/JU
 Sample : J2554-12
 Misc :
 ALS Vial : 5 Sample Multiplier: 1

Instrument :
 BNA_M
 ClientSampled :
 C0AG0

Quant Method : Z:\HPCHEM1\BNA M\METHODS\SOM-EPA-BM041918.M
 Quant Title : SVOA CALIBRATION

TIC Library : C:\DATABASE\NIST11.L
 TIC Integration Parameters: LSCINT.P



Data Path : Z:\HPCHEM1\BNA M\DATA\BM050318\
 Data File : BM014946.D
 Acq On : 03 May 2018 16:58
 Operator : SJ/JU
 Sample : J2554-12
 Misc :
 ALS Vial : 5 Sample Multiplier: 1

Instrument :
 BNA_M
 ClientSampled :
 C0AG0

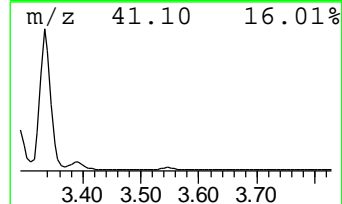
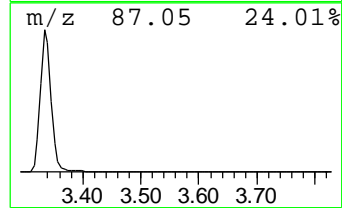
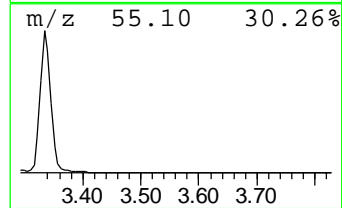
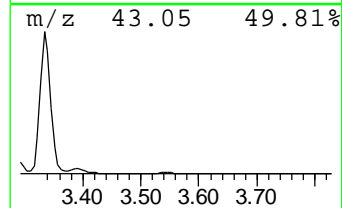
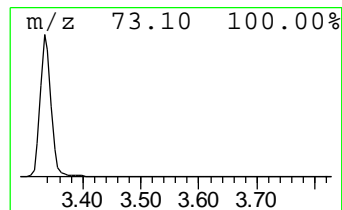
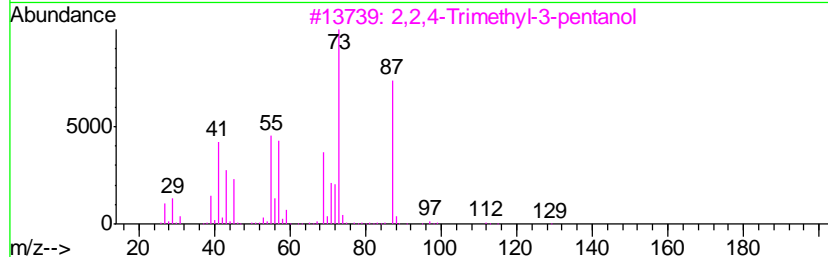
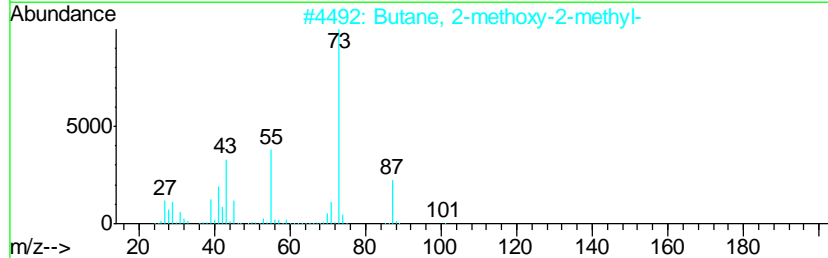
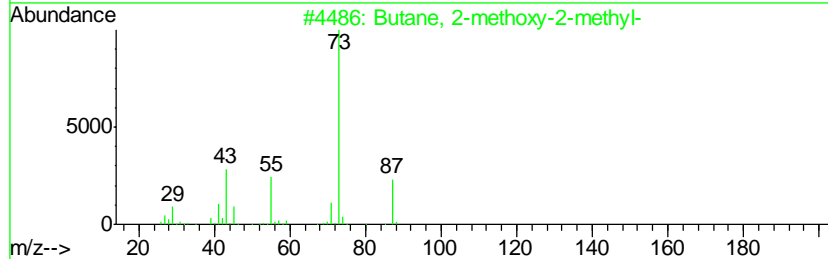
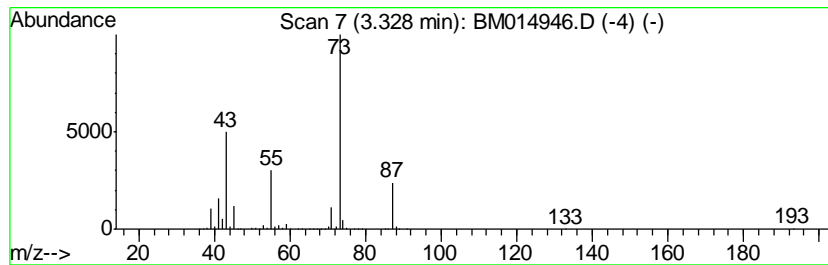
Quant Method : Z:\HPCHEM1\BNA M\METHODS\SOM-EPA-BM041918.M
 Quant Title : SVOA CALIBRATION

TIC Library : C:\DATABASE\NIST11.L
 TIC Integration Parameters: LSCINT.P

 Peak Number 1 Butane, 2-methoxy-2-methyl- Concentration Rank 1

R.T.	EstConc	Area	Relative to ISTD	R.T.
3.33	28.32 ng/ul	3338350	1,4-Dichlorobenzene-d4	8.49

Hit#	of	Tentative ID	MW	MolForm	CAS#	Qual
1	5	Butane, 2-methoxy-2-methyl-	102	C6H14O	000994-05-8	83
2		Butane, 2-methoxy-2-methyl-	102	C6H14O	000994-05-8	50
3		2,2,4-Trimethyl-3-pentanol	130	C8H18O	005162-48-1	40
4		Silane, tetramethyl-	88	C4H12Si	000075-76-3	38
5		3-Pentanol, 2,4-dimethyl-	116	C7H16O	000600-36-2	37



Data Path : Z:\HPCHEM1\BNA M\DATA\BM050318\
 Data File : BM014946.D
 Acq On : 03 May 2018 16:58
 Operator : SJ/JU
 Sample : J2554-12
 Misc :
 ALS Vial : 5 Sample Multiplier: 1

Instrument :
 BNA_M
 ClientSampleId :
 C0AG0

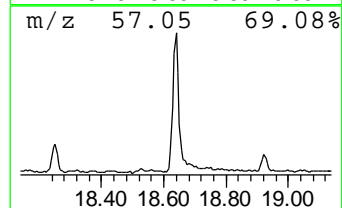
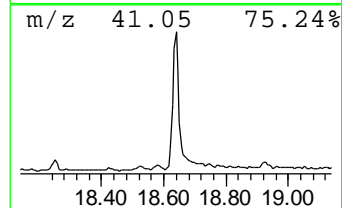
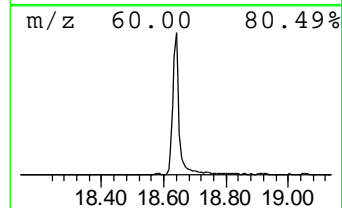
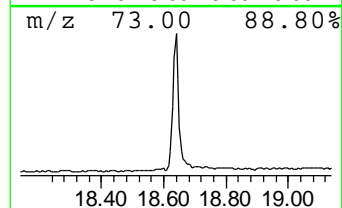
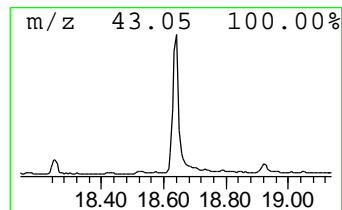
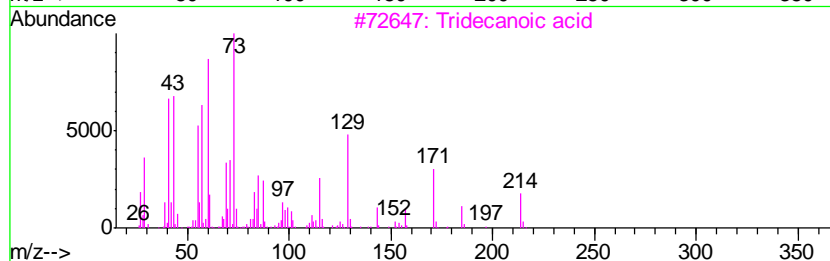
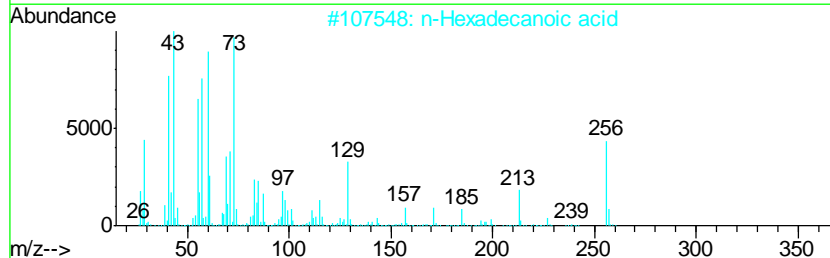
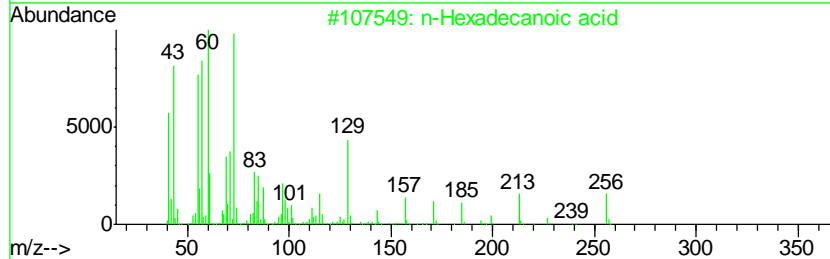
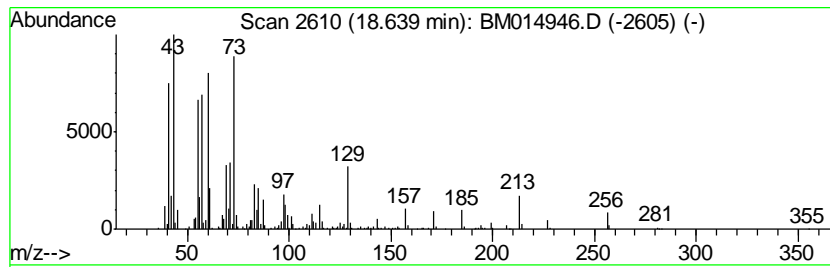
Quant Method : Z:\HPCHEM1\BNA M\METHODS\SOM-EPA-BM041918.M
 Quant Title : SVOA CALIBRATION

TIC Library : C:\DATABASE\NIST11.L
 TIC Integration Parameters: LSCINT.P

 Peak Number 2 n-Hexadecanoic acid Concentration Rank 3

R.T.	EstConc	Area	Relative to ISTD	R.T.
18.64	4.72 ng/ul	899408	Phenanthrene-d10	17.81

Hit#	of	Tentative ID	MW	MolForm	CAS#	Qual
1	5	n-Hexadecanoic acid	256	C16H32O2	000057-10-3	99
2		n-Hexadecanoic acid	256	C16H32O2	000057-10-3	97
3		Tridecanoic acid	214	C13H26O2	000638-53-9	93
4		n-Hexadecanoic acid	256	C16H32O2	000057-10-3	91
5		Pentadecanoic acid	242	C15H30O2	001002-84-2	90



Data Path : Z:\HPCHEM1\BNA M\DATA\BM050318\
 Data File : BM014946.D
 Acq On : 03 May 2018 16:58
 Operator : SJ/JU
 Sample : J2554-12
 Misc :
 ALS Vial : 5 Sample Multiplier: 1

Instrument :
 BNA_M
 ClientSampleId :
 C0AG0

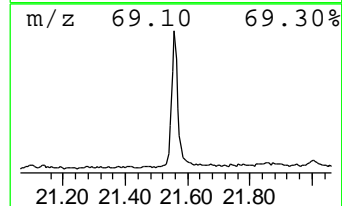
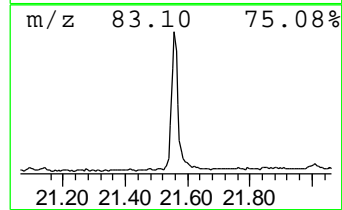
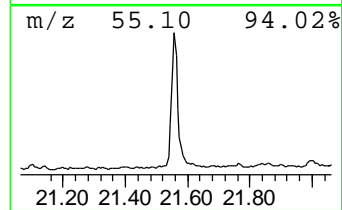
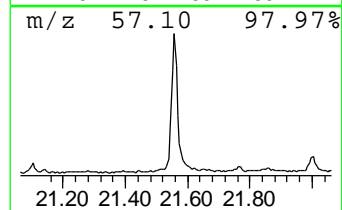
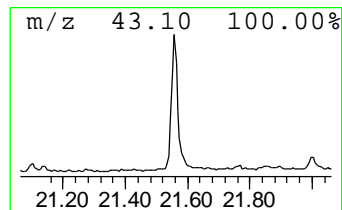
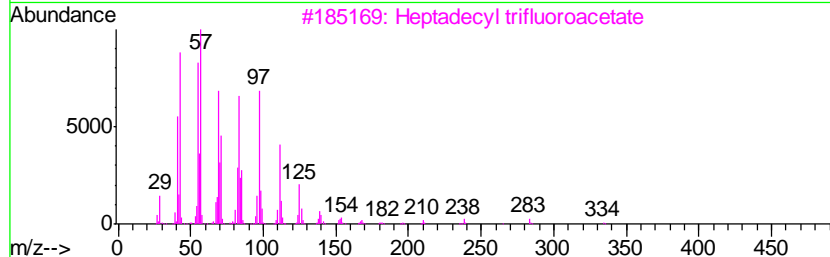
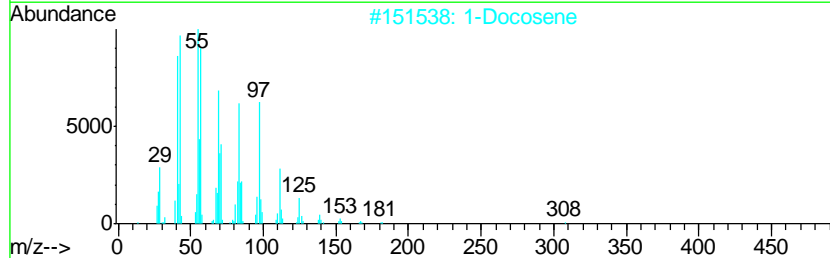
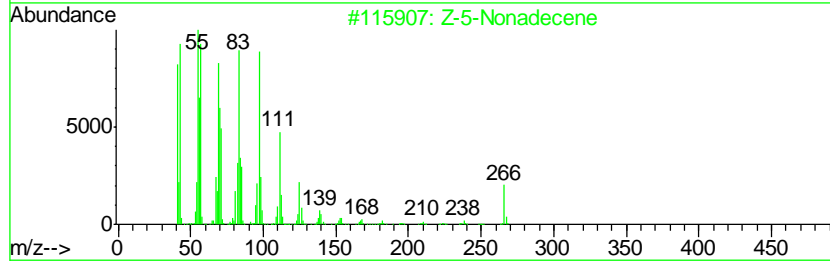
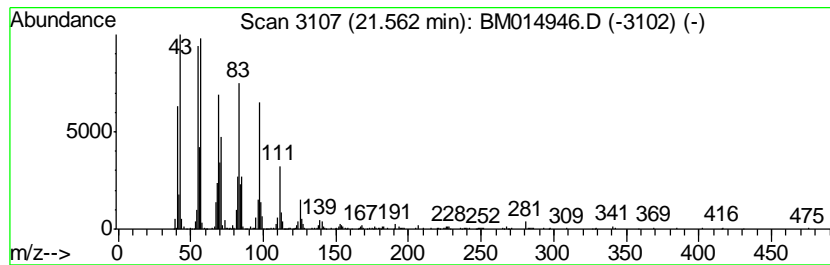
Quant Method : Z:\HPCHEM1\BNA M\METHODS\SOM-EPA-BM041918.M
 Quant Title : SVOA CALIBRATION

TIC Library : C:\DATABASE\NIST11.L
 TIC Integration Parameters: LSCINT.P

 Peak Number 3 (DEL) Alkane: Cyclic21.56 Concentration Rank 2

R.T.	EstConc	Area	Relative to ISTD	R.T.
21.56	5.13 ng/ul	1027990	Chrysene-d12	21.90

Hit#	of	Tentative ID	MW	MolForm	CAS#	Qual
1	5	Z-5-Nonadecene	266	C19H38	1000131-11-8	97
2		1-Docosene	308	C22H44	001599-67-3	95
3		Heptadecyl trifluoroacetate	352	C19H35F3O2	1000351-87-0	94
4		Trifluoroacetoxy hexadecane	338	C18H33F3O2	006222-03-3	94
5		Heptafluorobutyric acid, hexadec...	438	C20H33F7O2	006385-15-5	94



Data Path : Z:\HPCHEM1\BNA_M\DATA\BM050318\
Data File : BM014946.D
Acq On : 03 May 2018 16:58
Operator : SJ/JU
Sample : J2554-12
Misc :
ALS Vial : 5 Sample Multiplier: 1

Instrument :
BNA_M
ClientSampleId :
C0AG0

Quant Method : Z:\HPCHEM1\BNA_M\METHODS\SOM-EPA-BM041918.M
Quant Title : SVOA CALIBRATION

TIC Library : C:\DATABASE\NIST11.L
TIC Integration Parameters: LSCINT.P

TIC Top Hit name	RT	EstConc	Units	Response	--Internal Standard--			
					#	RT	Resp	Conc
Butane, 2-methoxy...	3.33	28.3	ng/ul	3338350	1	8.49	2357760	20.0
n-Hexadecanoic acid	18.64	4.7	ng/ul	899408	4	17.81	3807670	20.0
(DEL) Alkane: Cyc...	21.56	5.1	ng/ul	1027990	5	21.90	4010080	20.0