

Data Path : Z:\HPCHEM1\BNA_M\DATA\BM050415\
 Data File : BM001195.D
 Acq On : 04 May 2015 22:01
 Operator : TP/IZ
 Sample : G2104-02
 Misc :
 ALS Vial : 9 Sample Multiplier: 1

Instrument :
 BNA_M
ClientSampled :
 MW-103

Manual Integrations
APPROVED
 apatel
 5/5/2015 12:09:28 PM

Quant Time: May 05 04:40:00 2015
 Quant Method : Z:\HPCHEM1\BNA_M\METHODS\SIMPAH-BM050115.M
 Quant Title : ASP BNA STANDARDS FOR 5 POINT CALIBRATION
 QLast Update : Tue May 05 03:49:45 2015
 Response via : Initial Calibration

Internal Standards	R.T.	QIon	Response	Conc	Units	Dev(Min)
1) 1,4-Dichlorobenzene-d4	7.52	152	14855	5.00	ng	0.00
6) Naphthalene-d8	10.31	136	58381	5.00	ng	0.00
12) Acenaphthene-d10	14.20	164	33842	5.00	ng	0.00
18) Phenanthrene-d10	16.94	188	88981	5.00	ng	0.00
24) Chrysene-d12	21.15	240	77837	5.00	ng	0.00
30) Perylene-d12	23.29	264	67392	5.00	ng	0.00
System Monitoring Compounds						
4) 2-Fluorophenol	5.11	112	14440	5.00	ng	0.00
5) Phenol-d6	6.72	99	13263	3.73	ng	0.02
7) Nitrobenzene-d5	8.69	82	24067	7.28	ng	0.00
13) 2,4,6-Tribromophenol	15.69	330	19975	12.00	ng	0.00
14) 2-Fluorobiphenyl	12.80	172	78636	7.03	ng	0.00
26) Terphenyl-d14	19.58	244	86176	8.03	ng	-0.01
Target Compounds						Qvalue
11) 2-Methylnaphthalene	11.98	142	221	0.03	ng	# 74
23) Fluoranthene	19.01	202	413	0.02	ng	# 95
25) Pyrene	19.38	202	463m	0.02	ng	
27) Benzo(a)anthracene	21.13	228	640	0.03	ng	# 81
28) Chrysene	21.18	228	390	0.02	ng	# 77
29) Indeno(1,2,3-cd)pyrene	25.43	276	423	0.02	ng	94

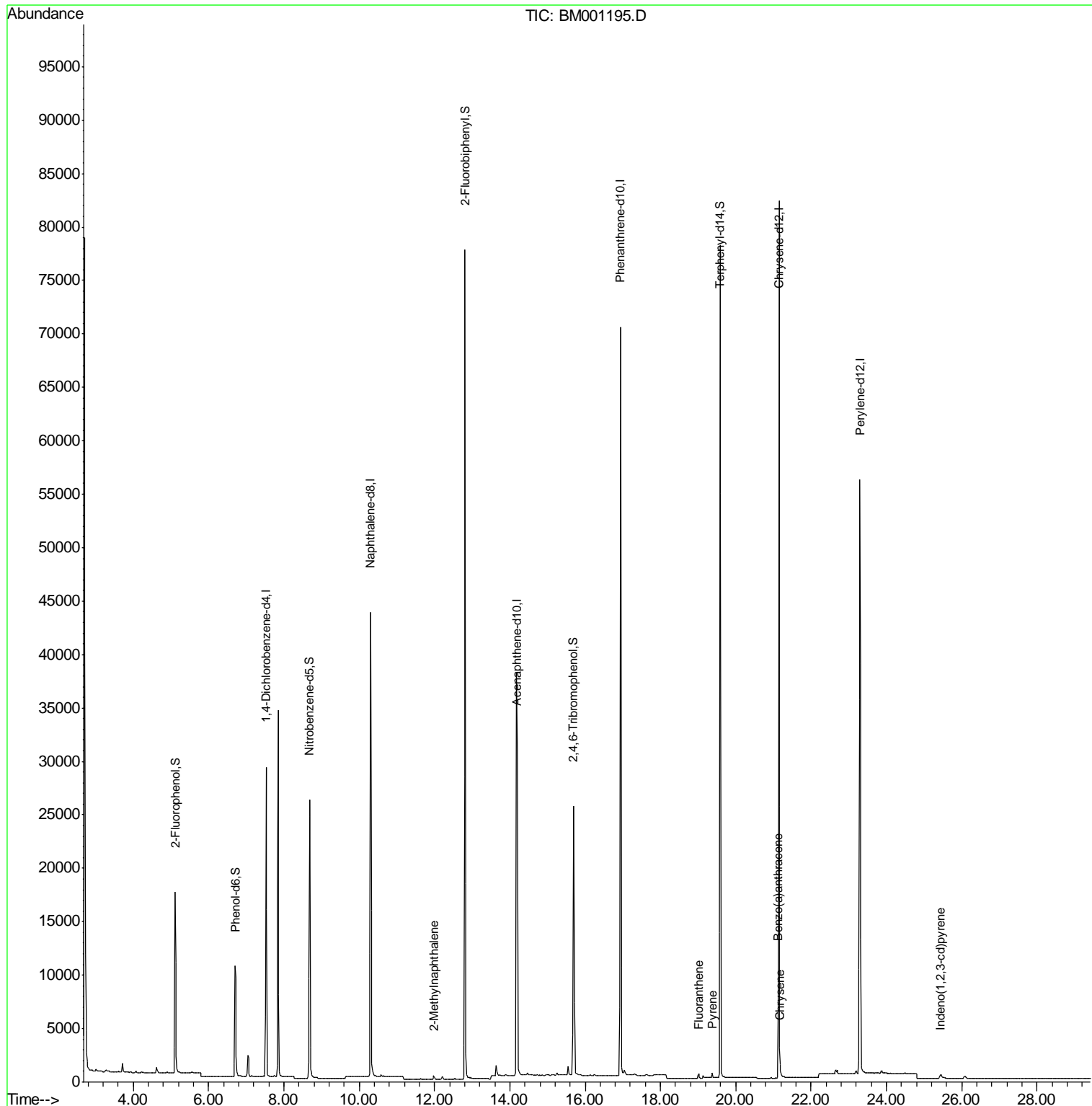
(#) = qualifier out of range (m) = manual integration (+) = signals summed

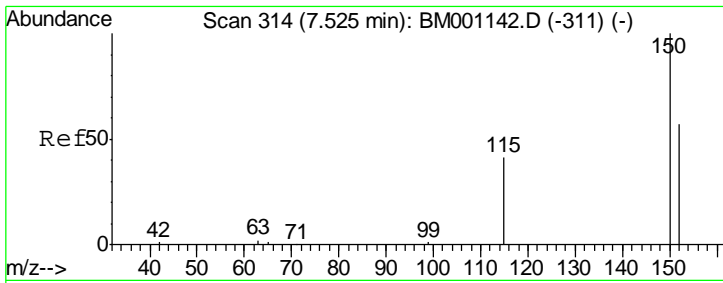
Data Path : Z:\HPCHEM1\BNA_M\DATA\BM050415\
 Data File : BM001195.D
 Acq On : 04 May 2015 22:01
 Operator : TP/IZ
 Sample : G2104-02
 Misc :
 ALS Vial : 9 Sample Multiplier: 1

Instrument :
 BNA_M
ClientSampled :
 MW-103

Manual Integrations
APPROVED
 apatel
 5/5/2015 12:09:28 PM

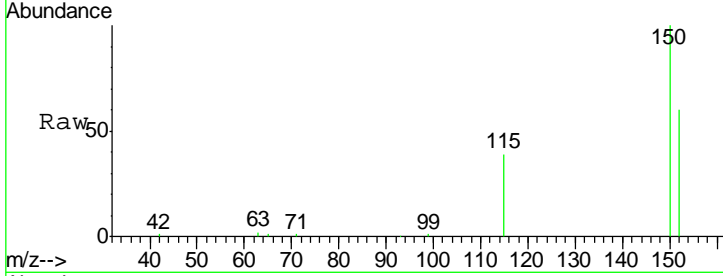
Quant Time: May 05 04:40:00 2015
 Quant Method : Z:\HPCHEM1\BNA_M\METHODS\SIMPAH-BM050115.M
 Quant Title : ASP BNA STANDARDS FOR 5 POINT CALIBRATION
 QLast Update : Tue May 05 03:49:45 2015
 Response via : Initial Calibration





#1
 1,4-Dichlorobenzene-d4
 Concen: 5.00 ng
 RT: 7.52 min Scan# 314
 Delta R.T. -0.00 min
 Lab File: BM001195.D
 Acq: 04 May 2015 22:01

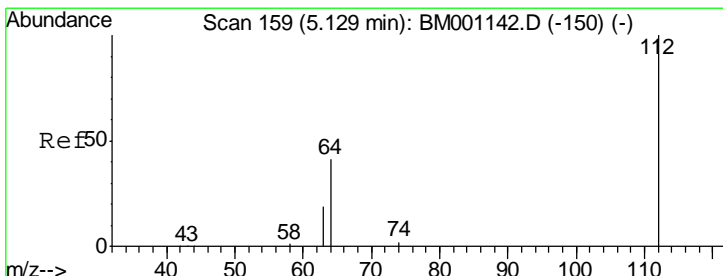
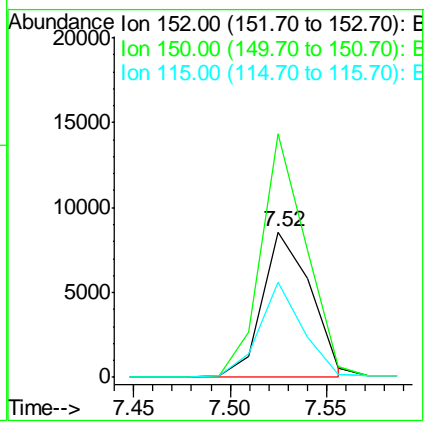
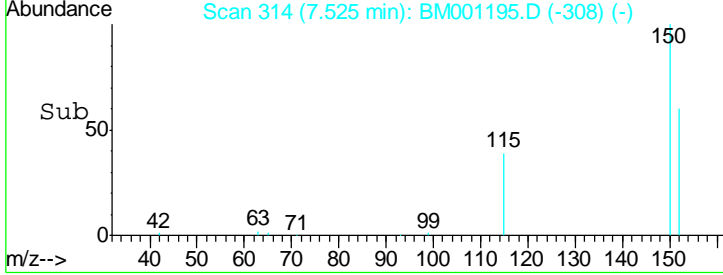
Instrument :
 BNA_M
ClientSampled :
 MW-103



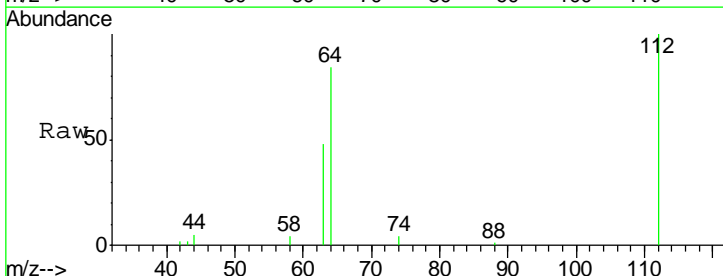
Tgt Ion:152 Resp: 14855

Ion	Ratio	Lower	Upper
152	100		
150	167.5	140.1	210.1
115	65.6	57.8	86.6

Manual Integrations
APPROVED
 apatel
 5/5/2015 12:09:28 PM

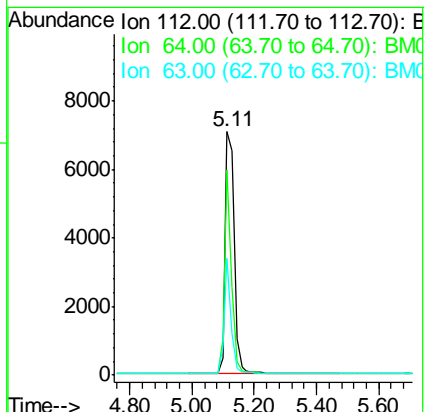
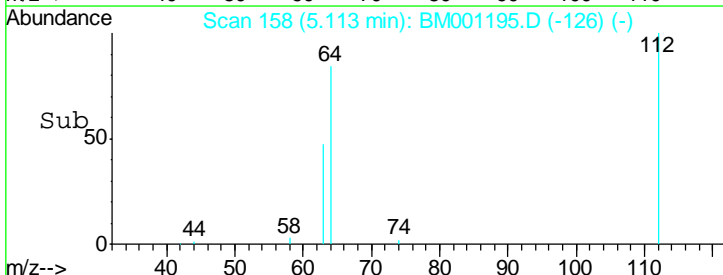


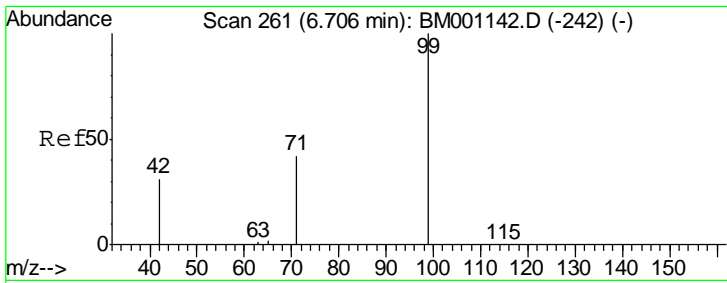
#4
 2-Fluorophenol
 Concen: 5.00 ng
 RT: 5.11 min Scan# 158
 Delta R.T. -0.00 min
 Lab File: BM001195.D
 Acq: 04 May 2015 22:01



Tgt Ion:112 Resp: 14440

Ion	Ratio	Lower	Upper
112	100		
64	64.5	52.6	79.0
63	35.8	29.5	44.3



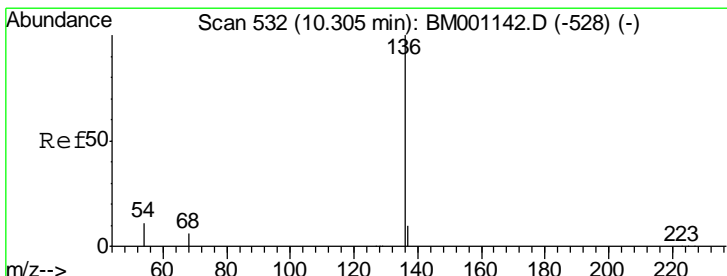
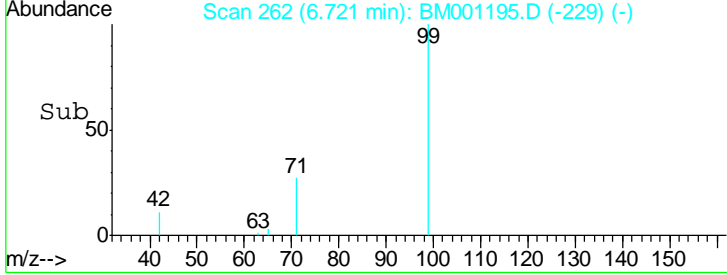
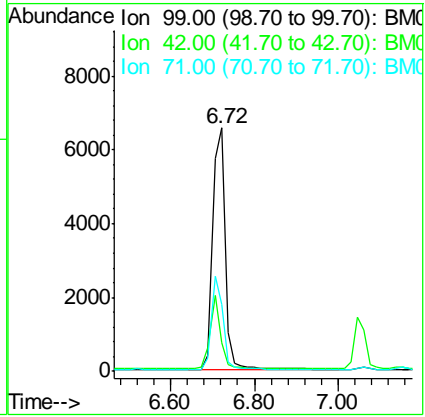
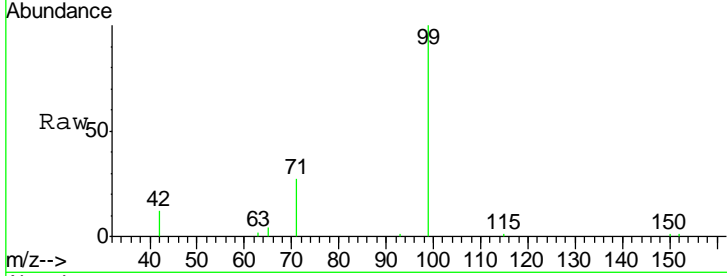


#5
 Phenol-d6
 Concen: 3.73 ng
 RT: 6.72 min Scan# 262
 Delta R.T. 0.02 min
 Lab File: BM001195.D
 Acq: 04 May 2015 22:01

Instrument :
 BNA_M
ClientSampled :
 MW-103

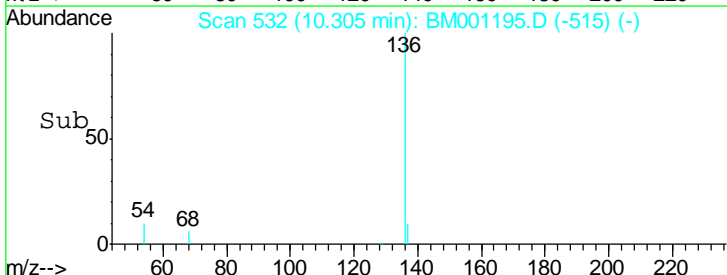
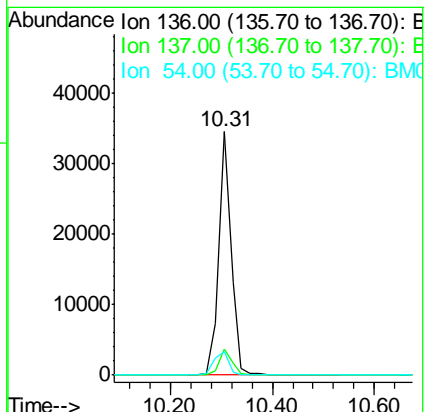
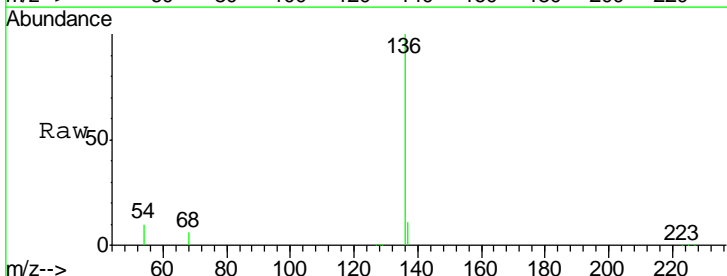
Tgt Ion	Resp	Lower	Upper
99	13263		
99	100		
42	23.9	20.9	31.3
71	35.2	28.5	42.7

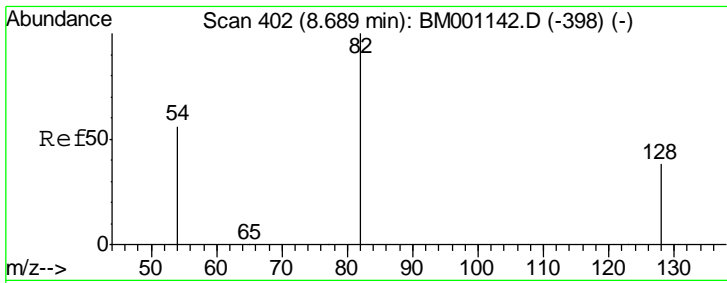
Manual Integrations
APPROVED
 apatel
 5/5/2015 12:09:28 PM



#6
 Naphthalene-d8
 Concen: 5.00 ng
 RT: 10.31 min Scan# 532
 Delta R.T. -0.00 min
 Lab File: BM001195.D
 Acq: 04 May 2015 22:01

Tgt Ion	Resp	Lower	Upper
136	58381		
136	100		
137	10.6	8.2	12.4
54	9.8	9.0	13.4



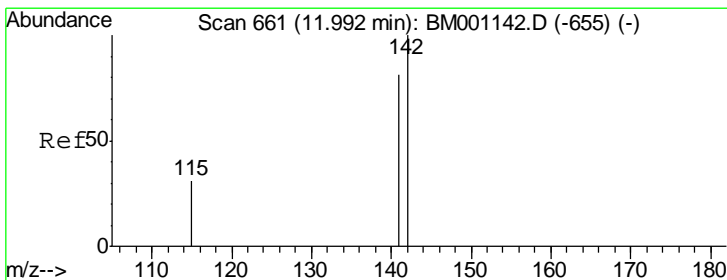
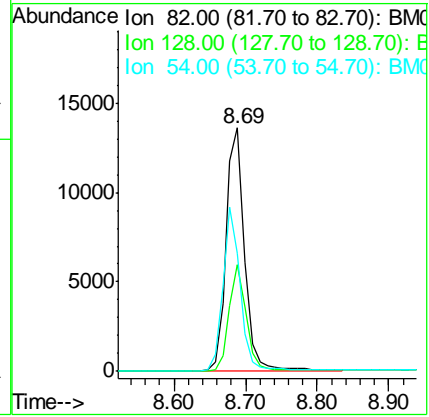
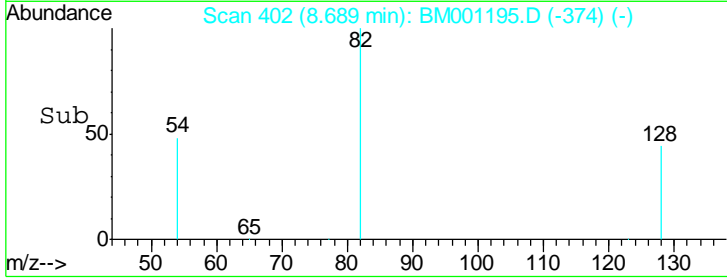
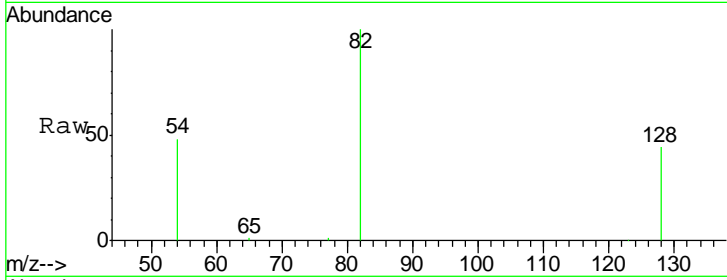


#7
 Nitrobenzene-d5
 Concen: 7.28 ng
 RT: 8.69 min Scan# 402
 Delta R.T. -0.00 min
 Lab File: BM001195.D
 Acq: 04 May 2015 22:01

Instrument :
 BNA_M
ClientSampled :
 MW-103

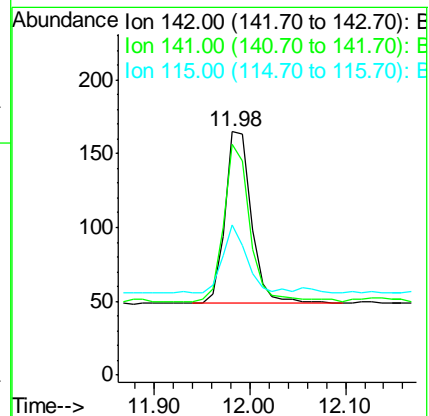
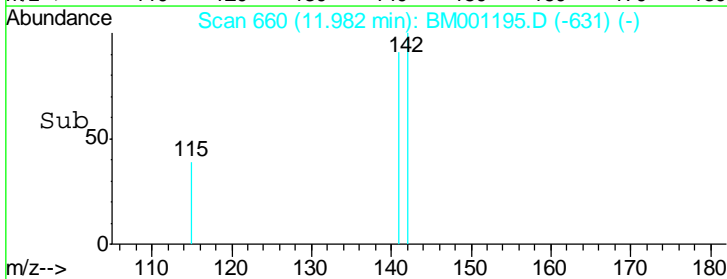
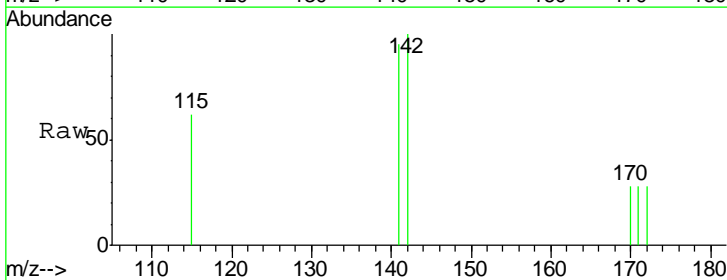
Tgt Ion	Resp	Lower	Upper
82	24067		
128	43.9	31.9	47.9
54	48.3	46.2	69.2

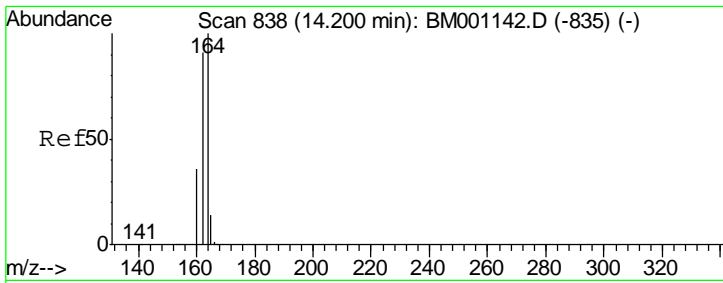
Manual Integrations
APPROVED
 apatel
 5/5/2015 12:09:28 PM



#11
 2-Methylnaphthalene
 Concen: 0.03 ng
 RT: 11.98 min Scan# 660
 Delta R.T. -0.00 min
 Lab File: BM001195.D
 Acq: 04 May 2015 22:01

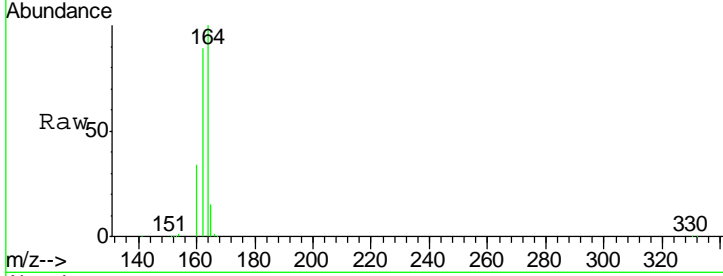
Tgt Ion	Resp	Lower	Upper
142	221		
141	94.5	65.1	97.7
115	61.8	25.1	37.7#





#12
 Acenaphthene-d10
 Concen: 5.00 ng
 RT: 14.20 min Scan# 838
 Delta R.T. -0.00 min
 Lab File: BM001195.D
 Acq: 04 May 2015 22:01

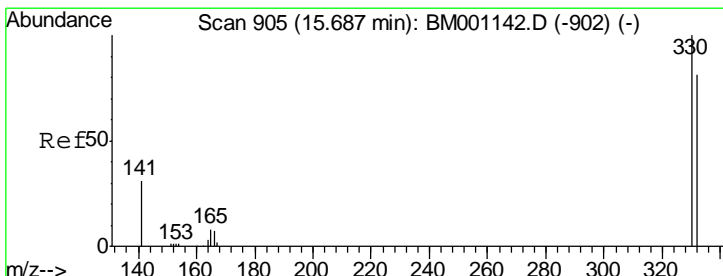
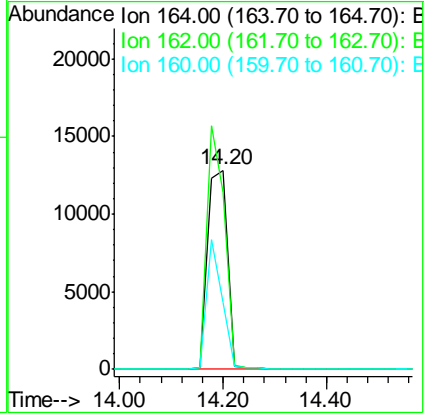
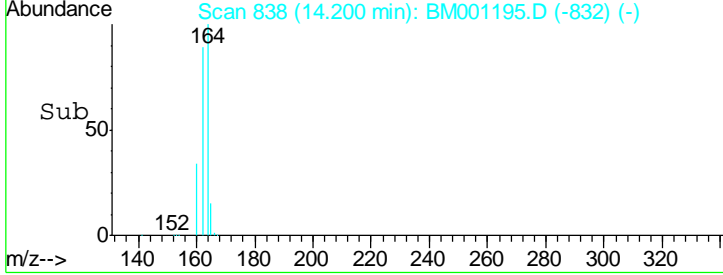
Instrument :
 BNA_M
ClientSampled :
 MW-103



Tgt Ion:164 Resp: 33842

Ion	Ratio	Lower	Upper
164	100		
162	89.1	72.7	109.1
160	33.9	28.7	43.1

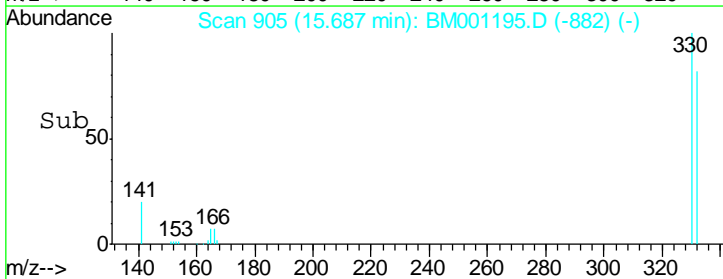
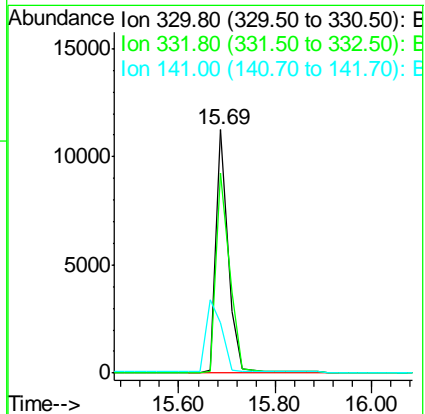
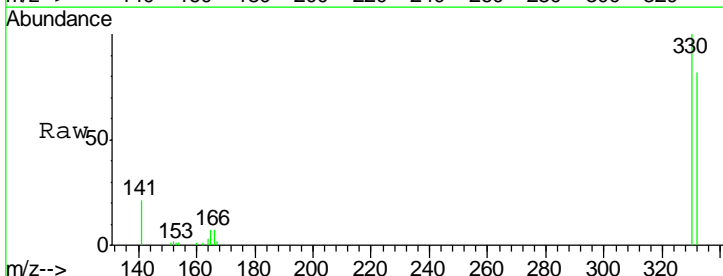
Manual Integrations
APPROVED
 apatel
 5/5/2015 12:09:28 PM

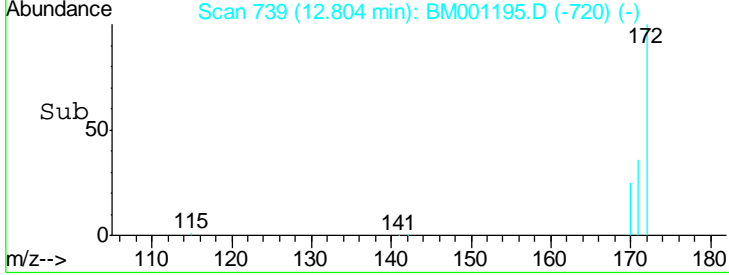
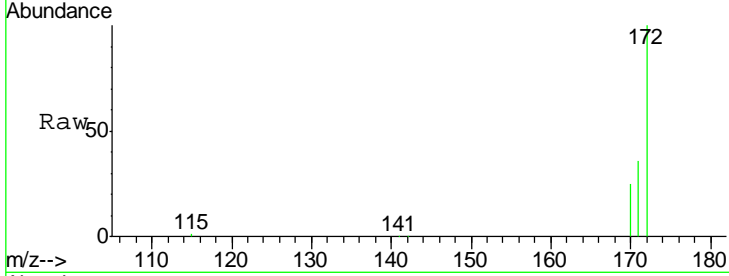
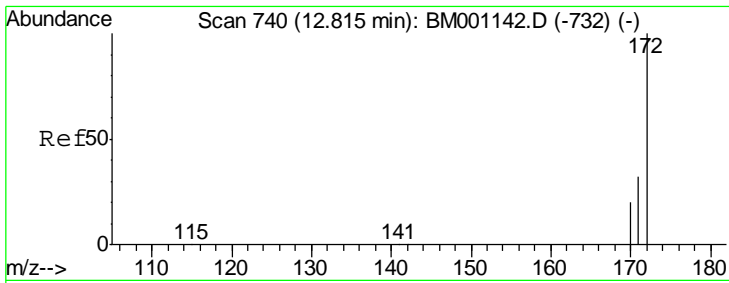


#13
 2,4,6-Tribromophenol
 Concen: 12.00 ng
 RT: 15.69 min Scan# 905
 Delta R.T. -0.00 min
 Lab File: BM001195.D
 Acq: 04 May 2015 22:01

Tgt Ion:330 Resp: 19975

Ion	Ratio	Lower	Upper
330	100		
332	92.5	74.5	111.7
141	0.0	21.0	31.4#



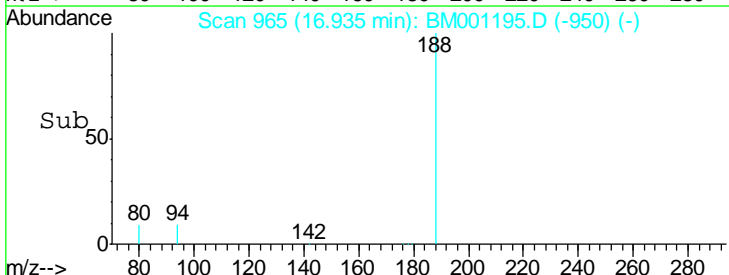
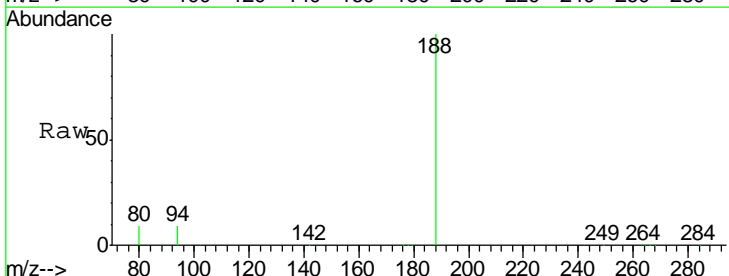
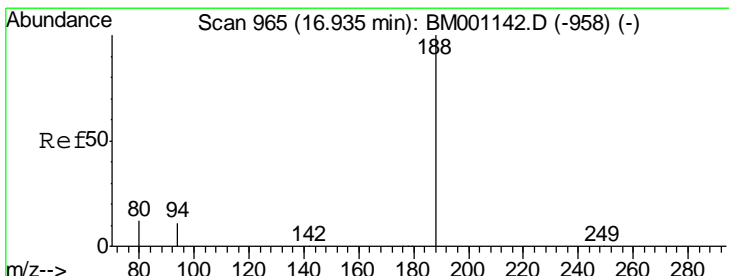
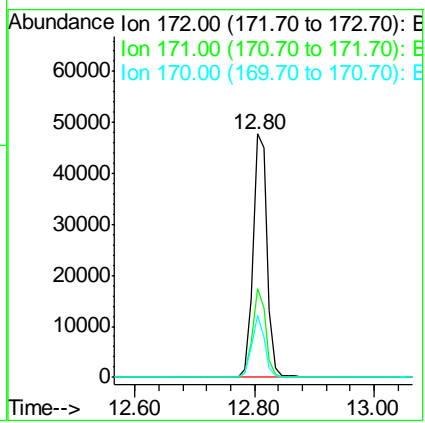


#14
 2-Fluorobiphenyl
 Concen: 7.03 ng
 RT: 12.80 min Scan# 739
 Delta R.T. -0.00 min
 Lab File: BM001195.D
 Acq: 04 May 2015 22:01

Tgt Ion	Resp	Lower	Upper
172	100		
171	36.5	25.8	38.6
170	25.5	16.1	24.1#

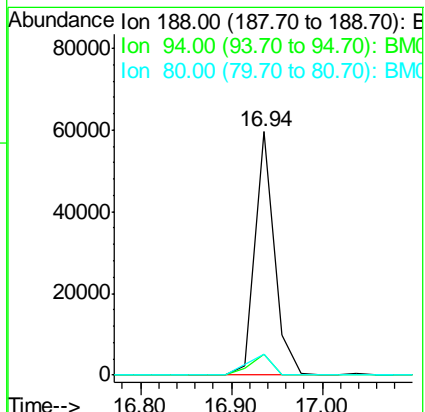
Instrument :
 BNA_M
 ClientSampled :
 MW-103

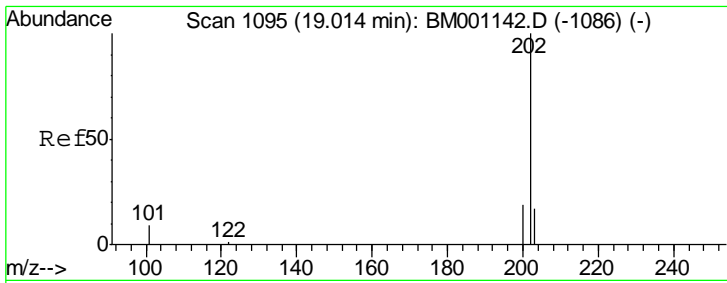
Manual Integrations
 APPROVED
 apatel
 5/5/2015 12:09:28 PM



#18
 Phenanthrene-d10
 Concen: 5.00 ng
 RT: 16.94 min Scan# 965
 Delta R.T. -0.00 min
 Lab File: BM001195.D
 Acq: 04 May 2015 22:01

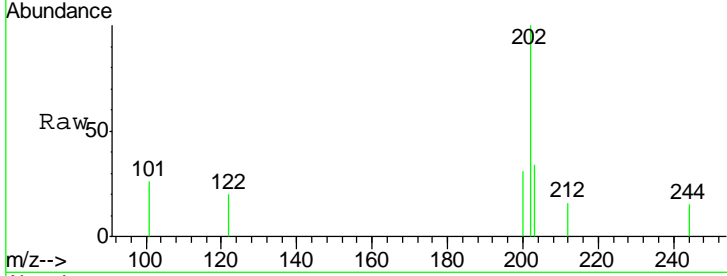
Tgt Ion	Resp	Lower	Upper
188	100		
94	8.6	9.3	13.9#
80	8.8	9.8	14.6#





#23
 Fluoranthene
 Concen: 0.02 ng
 RT: 19.01 min Scan# 1095
 Delta R.T. -0.00 min
 Lab File: BM001195.D
 Acq: 04 May 2015 22:01

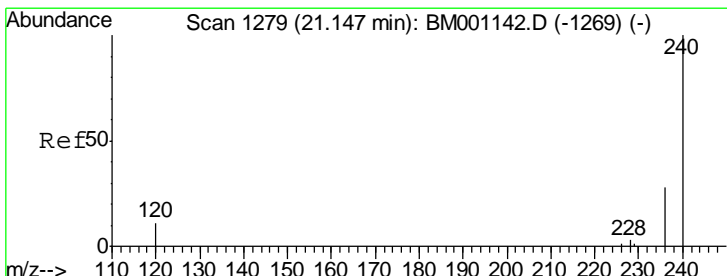
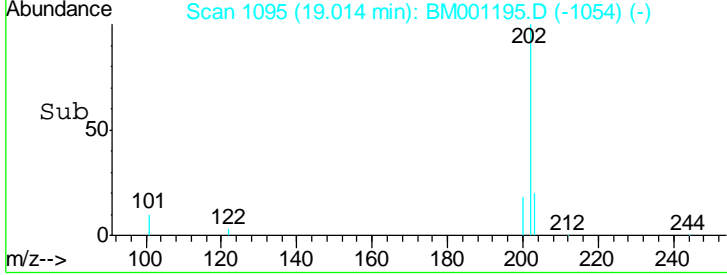
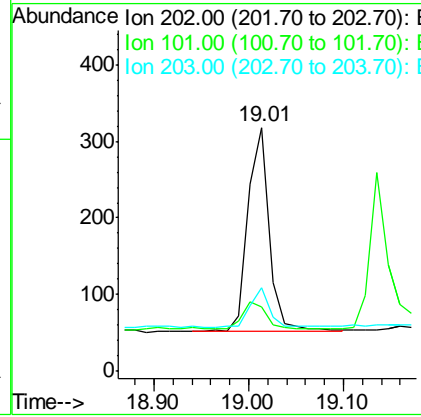
Instrument :
 BNA_M
 ClientSampled :
 MW-103



Tgt Ion: 202 Resp: 413

Ion	Ratio	Lower	Upper
202	100		
101	15.5	9.3	13.9#
203	17.7	13.7	20.5

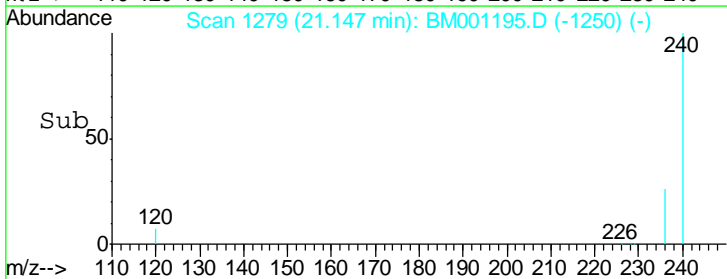
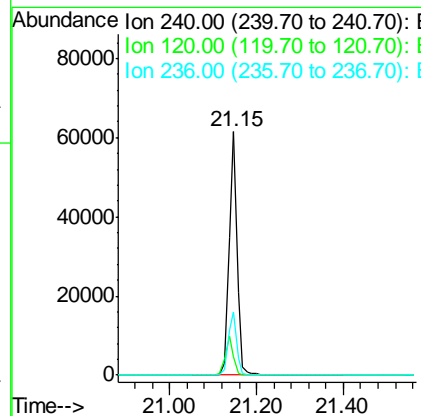
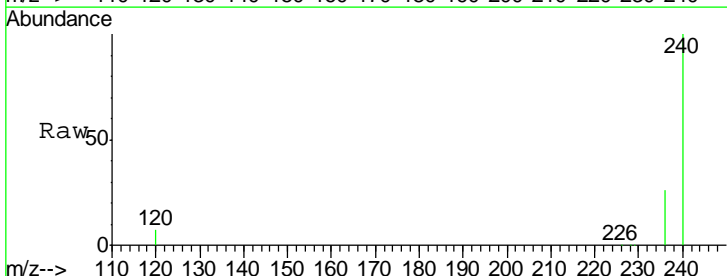
Manual Integrations
 APPROVED
 apatel
 5/5/2015 12:09:28 PM

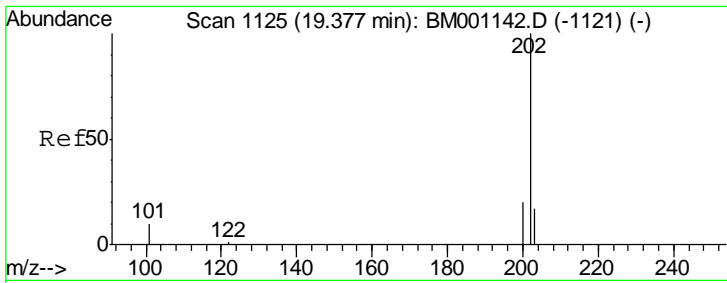


#24
 Chrysene-d12
 Concen: 5.00 ng
 RT: 21.15 min Scan# 1279
 Delta R.T. -0.00 min
 Lab File: BM001195.D
 Acq: 04 May 2015 22:01

Tgt Ion: 240 Resp: 77837

Ion	Ratio	Lower	Upper
240	100		
120	7.4	9.2	13.8#
236	26.0	22.4	33.6



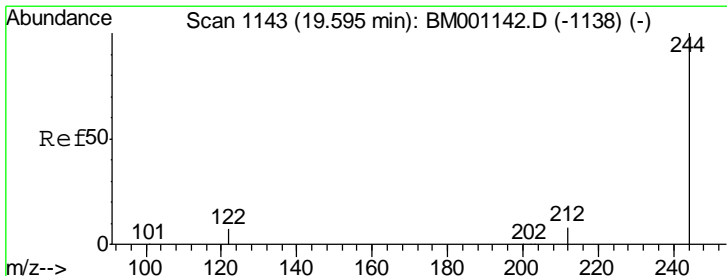
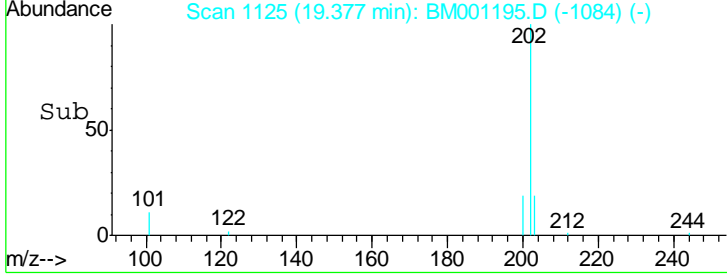
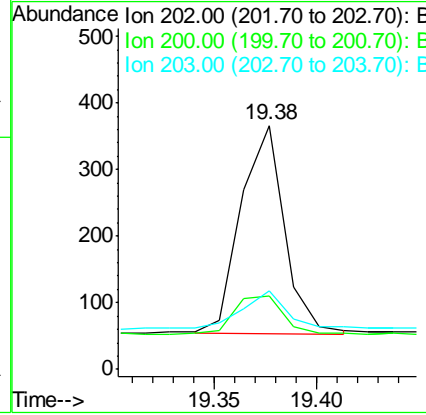
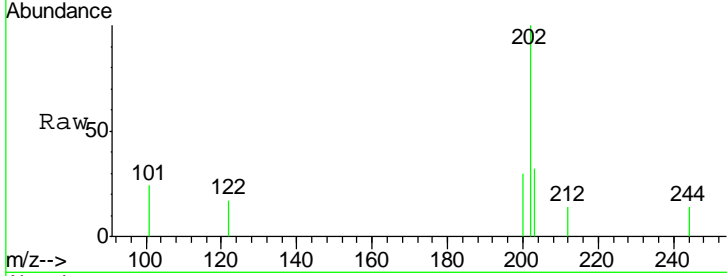


#25
 Pyrene
 Concen: 0.02 ng m
 RT: 19.38 min Scan# 1125
 Delta R.T. -0.00 min
 Lab File: BM001195.D
 Acq: 04 May 2015 22:01

Instrument :
 BNA_M
ClientSampled :
 MW-103

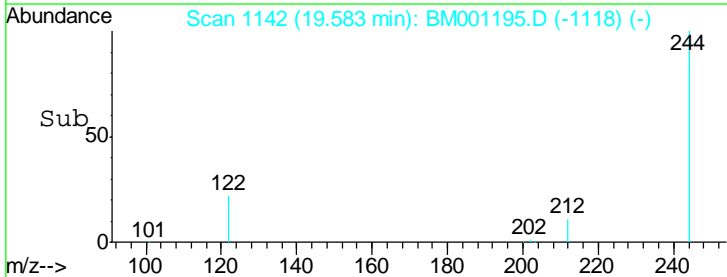
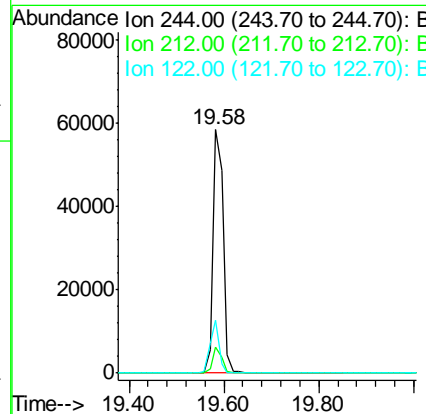
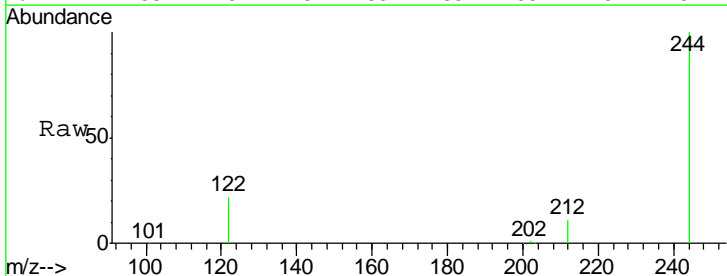
Tgt Ion	Resp	Lower	Upper
202	100		
200	17.3	16.4	24.6
203	15.8	13.8	20.6

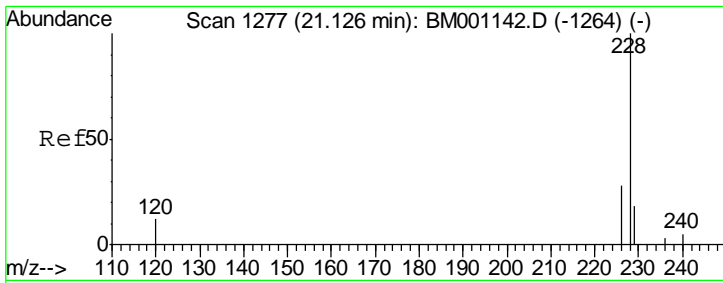
Manual Integrations
APPROVED
 apatel
 5/5/2015 12:09:28 PM



#26
 Terphenyl-d14
 Concen: 8.03 ng
 RT: 19.58 min Scan# 1142
 Delta R.T. -0.01 min
 Lab File: BM001195.D
 Acq: 04 May 2015 22:01

Tgt Ion	Resp	Lower	Upper
244	100		
212	10.8	7.1	10.7#
122	21.7	6.2	9.4#



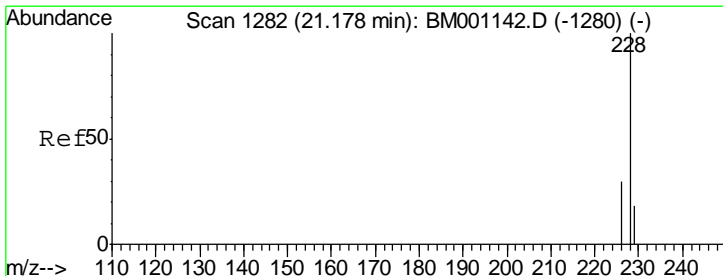
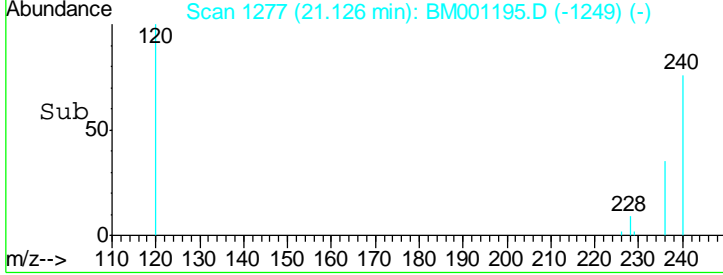
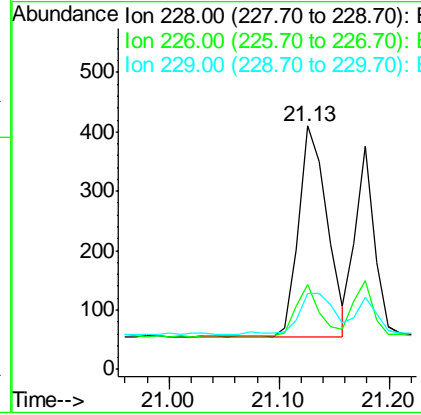
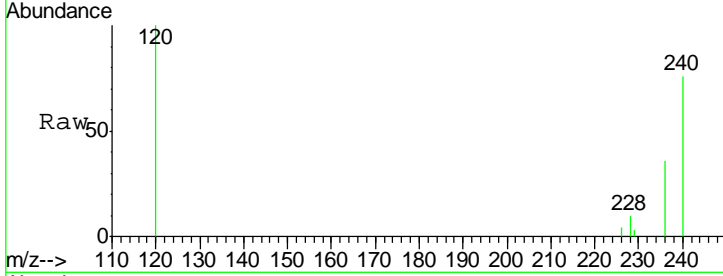


#27
 Benzo(a)anthracene
 Concen: 0.03 ng
 RT: 21.13 min Scan# 1277
 Delta R.T. -0.00 min
 Lab File: BM001195.D
 Acq: 04 May 2015 22:01

Instrument :
 BNA_M
 ClientSampled :
 MW-103

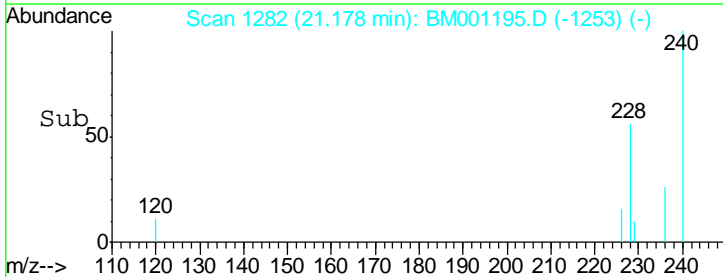
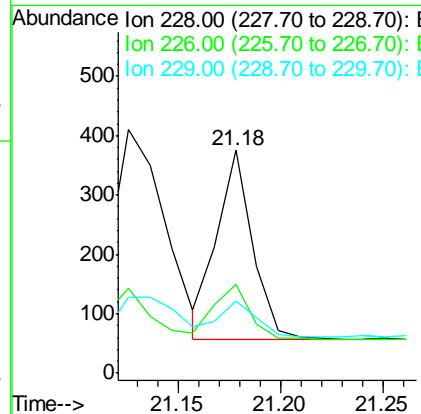
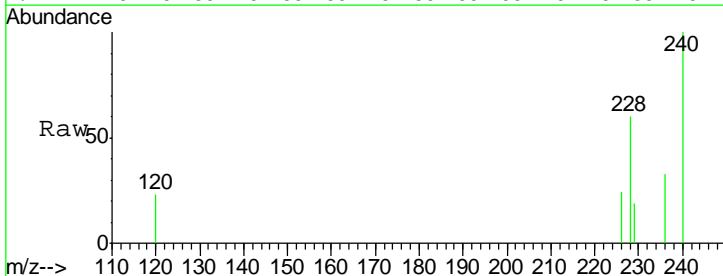
Tgt Ion	Resp	Lower	Upper
228	100		
226	35.1	22.8	34.2#
229	31.2	14.4	21.6#

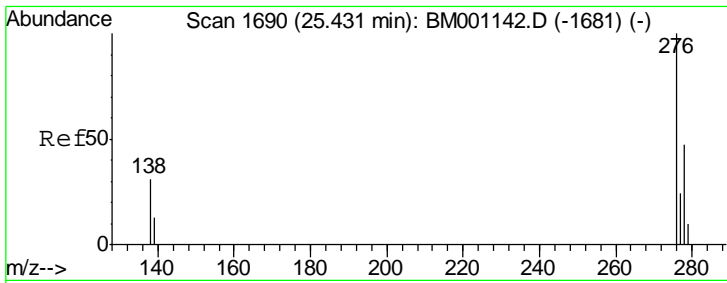
Manual Integrations
 APPROVED
 apatel
 5/5/2015 12:09:28 PM



#28
 Chrysene
 Concen: 0.02 ng
 RT: 21.18 min Scan# 1282
 Delta R.T. -0.00 min
 Lab File: BM001195.D
 Acq: 04 May 2015 22:01

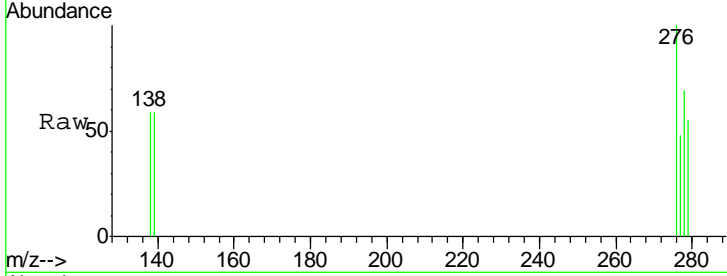
Tgt Ion	Resp	Lower	Upper
228	100		
226	40.0	24.4	36.6#
229	32.5	14.3	21.5#





#29
 Indeno(1,2,3-cd)pyrene
 Concen: 0.02 ng
 RT: 25.43 min Scan# 1690
 Delta R.T. -0.00 min
 Lab File: BM001195.D
 Acq: 04 May 2015 22:01

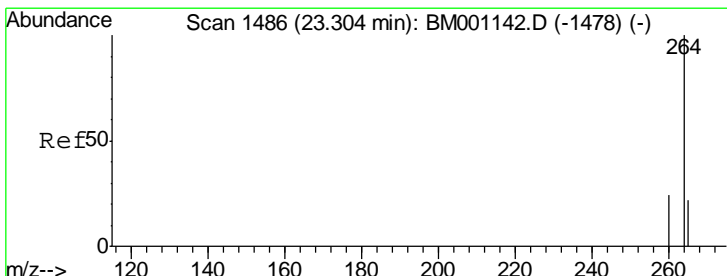
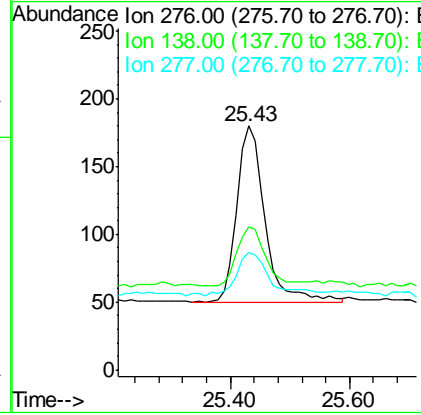
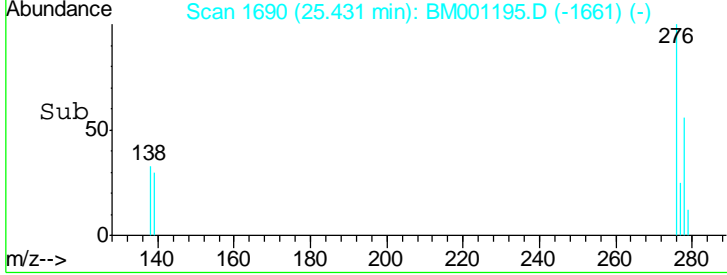
Instrument :
 BNA_M
 ClientSampled :
 MW-103



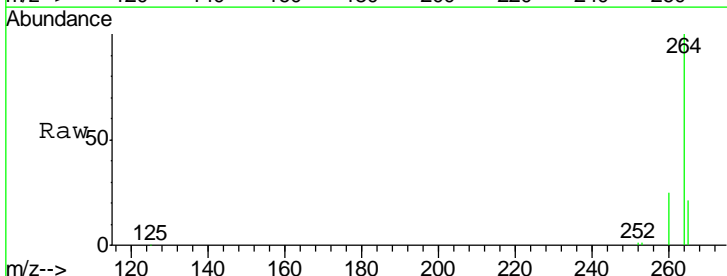
Tgt Ion: 276 Resp: 423

Ion	Ratio	Lower	Upper
276	100		
138	33.8	24.2	36.4
277	27.9	19.8	29.6

Manual Integrations
 APPROVED
 apatel
 5/5/2015 12:09:28 PM



#30
 Perylene-d12
 Concen: 5.00 ng
 RT: 23.29 min Scan# 1485
 Delta R.T. -0.00 min
 Lab File: BM001195.D
 Acq: 04 May 2015 22:01



Tgt Ion: 264 Resp: 67392

Ion	Ratio	Lower	Upper
264	100		
260	25.3	18.9	28.3
265	21.3	18.1	27.1

