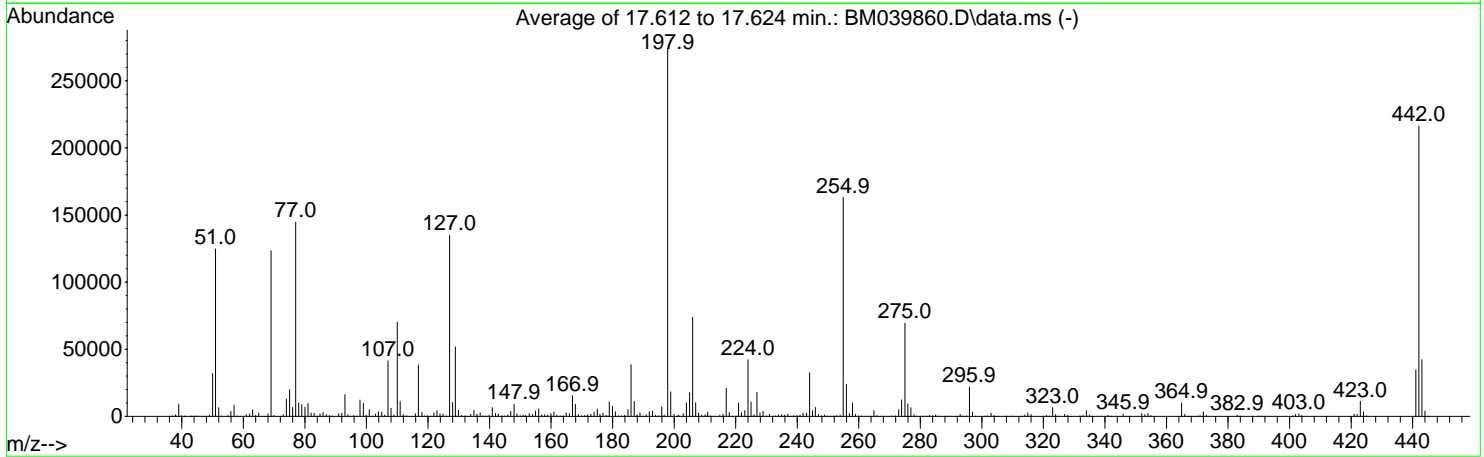
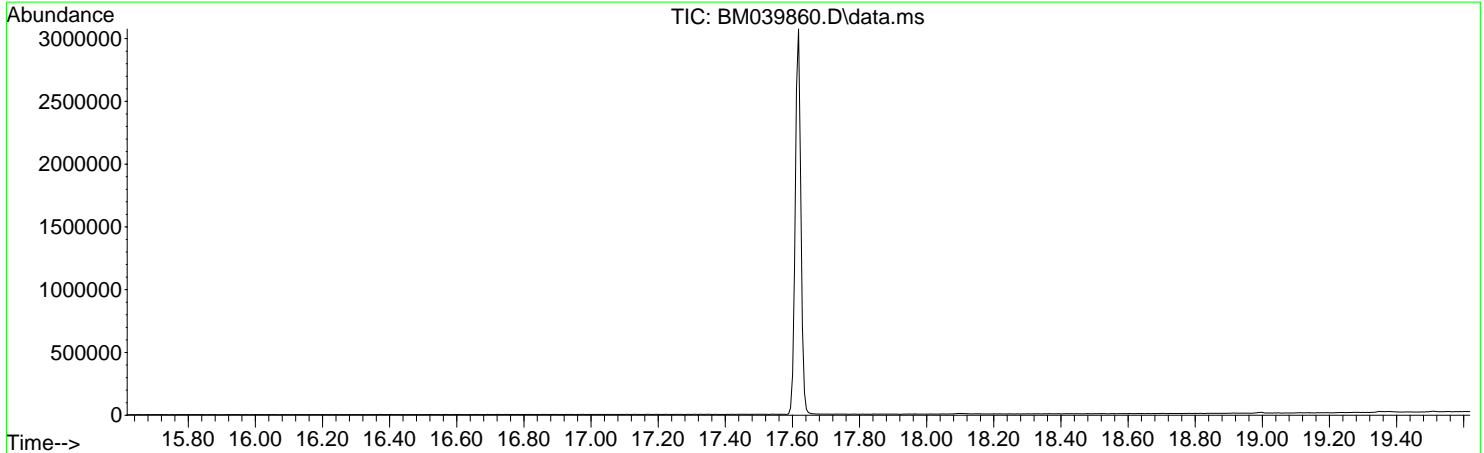


Data Path : Z:\svoasrv\HPCHEM1\BNA\_M\Data\BM050823\  
 Data File : BM039860.D  
 Acq On : 08 May 2023 09:02  
 Operator : CG/JU  
 Sample : DFTPP118  
 Misc :  
 ALS Vial : 1 Sample Multiplier: 1

**Instrument :**  
 BNA\_M  
**ClientSampleId :**  
 DFTPP118

Integration File: rteint.p

Method : Z:\SVOASRV\HPCHEM1\BNA\_M\METHODS\SFAM-EPA-SIM-BM042723.M  
 Title : ASP BNA STANDARDS FOR 5 POINT CALIBRATION  
 Last Update : Tue May 09 12:11:48 2023



AutoFind: Scans 2478, 2479, 2480; Background Corrected with Scan 2471

Target Mass	Rel. to Mass	Lower Limit%	Upper Limit%	Rel. Abn%	Raw Abn	Result Pass/Fail
51	198	10	80	45.5	124707	PASS
68	69	0.00	2	1.5	1862	PASS
69	198	0.00	100	45.0	123344	PASS
70	69	0.00	2	0.5	676	PASS
127	198	10	80	49.2	134944	PASS
197	198	0.00	2	0.3	937	PASS
198	198	100	100	100.0	274091	PASS
199	198	5	9	6.7	18304	PASS
275	198	10	60	25.3	69419	PASS
365	198	1	100	3.6	9986	PASS
441	198	0.01	100	12.7	34685	PASS
442	198	50	100	79.0	216427	PASS
443	442	15	24	19.6	42355	PASS

m/z	Abundance
39.90	667.0
44.00	2673.0
49.00	239.0
50.90	162.0
73.00	346.0
83.90	223.0
85.80	154.0
95.90	178.0
133.00	231.0
190.90	238.0
192.90	180.0
207.00	1375.0
207.90	354.0
281.00	298.0

**Instrument :**  
BNA\_M  
**ClientSampleId :**  
DFTPP118

m/z	Abundance
35.90	160.0
37.00	561.0
38.00	1570.0
39.00	10687.0
40.00	1217.0
41.00	397.0
42.90	167.0
44.00	2847.0
44.90	364.0
46.90	153.0
49.00	1265.0
50.00	37896.0
51.00	147968.0
52.00	7486.0
52.90	322.0
55.00	722.0
55.90	4390.0
57.00	9116.0
58.00	556.0
58.90	207.0
60.90	1637.0
62.00	1897.0
63.00	5264.0
64.00	696.0
65.00	2756.0
66.00	213.0
67.00	250.0
68.00	2095.0
69.00	141824.0
70.00	670.0
73.00	1506.0
74.00	14768.0
75.00	23160.0
76.00	7781.0
77.00	164928.0
78.00	11807.0
79.00	10368.0
80.00	7699.0
81.00	10642.0
82.00	2764.0
83.00	2449.0
83.90	515.0
84.90	2012.0
86.00	3519.0
87.00	1389.0
87.90	585.0
88.80	325.0
91.00	2303.0
91.90	2471.0
93.00	18296.0
94.00	1410.0
94.90	295.0
96.00	898.0
96.90	206.0
97.90	14004.0
99.00	11009.0
100.00	947.0
100.90	5390.0
101.90	344.0
103.00	1837.0
103.90	3784.0
104.90	3822.0
105.90	1126.0
107.00	46736.0
108.00	6653.0
108.90	1125.0
110.00	77768.0
111.00	12314.0
111.90	1583.0
113.00	535.0
115.00	235.0
115.90	2212.0
116.90	41784.0
118.00	3417.0
119.00	367.0
119.90	491.0
121.00	200.0
121.90	2649.0
122.90	4528.0
123.90	1886.0
124.90	1948.0
125.90	427.0
127.00	148416.0
128.00	11528.0
128.90	55024.0
129.90	5323.0
130.90	1051.0
132.00	520.0
132.90	421.0
133.90	1719.0
134.90	4785.0
135.90	1729.0

**Instrument :**  
BNA\_M  
**ClientSampleId :**  
DFTPP118

136.90	2868.0
137.90	535.0
139.00	394.0
139.90	711.0
140.90	7138.0
141.90	2411.0
142.90	1469.0
144.00	488.0
144.80	440.0
146.00	1361.0
146.90	4187.0
148.00	9376.0
148.90	2110.0
150.00	429.0
151.00	882.0
151.70	665.0
152.90	2476.0
153.90	1777.0
155.00	4357.0
156.00	6069.0
157.00	1217.0
157.90	1239.0
158.90	1041.0
159.90	2230.0
160.90	3213.0
161.80	846.0
162.90	344.0
163.80	269.0
164.90	2613.0
166.00	2314.0
167.00	16116.0
167.90	9628.0
168.90	1323.0
169.90	580.0
170.80	599.0
171.90	1134.0
172.90	1653.0
174.00	3311.0
175.00	5202.0
175.90	1472.0
176.90	2457.0
177.90	801.0
178.90	11366.0
179.90	8510.0
180.90	3656.0
181.90	549.0
182.90	220.0
183.90	879.0
185.00	5047.0
186.00	39688.0
187.00	11508.0
187.90	1508.0
188.90	2837.0
189.80	380.0
190.90	1317.0
191.90	3788.0
193.00	4133.0
193.90	963.0
195.00	395.0
195.90	7268.0
196.70	1195.0
197.90	277184.0
198.90	19032.0
200.00	1630.0
201.20	1053.0
203.00	2140.0
203.90	10061.0
205.00	17896.0
206.00	74560.0
207.00	11661.0
208.00	3071.0
209.00	1215.0
210.10	1155.0
210.90	3230.0
211.70	506.0
212.90	162.0
214.90	778.0
215.90	1637.0
216.90	20680.0
217.90	2945.0
218.90	276.0
220.10	351.0
221.00	10028.0
221.80	2708.0
222.90	4164.0
224.00	41360.0
225.00	10006.0
226.00	1297.0
226.90	17472.0
227.90	2424.0
228.90	3696.0
229.90	426.0
230.90	1486.0
231.90	234.0
233.00	366.0
233.90	1018.0

**Instrument :**  
BNA\_M  
**ClientSampleId :**  
DFTPP118

234.90	1193.0
235.90	846.0
236.90	1800.0
237.80	265.0
238.90	589.0
239.90	481.0
240.90	882.0
241.90	2059.0
243.00	2251.0
244.00	30184.0
245.00	4225.0
245.90	6543.0
246.90	1285.0
247.90	349.0
248.90	1237.0
249.80	195.0
250.00	198.0
251.00	253.0
252.00	250.0
252.80	719.0
253.90	790.0
254.90	156544.0
256.00	23064.0
257.00	2011.0
257.90	9520.0
258.90	1526.0
259.90	382.0
260.90	227.0
264.90	4248.0
265.80	588.0
270.90	408.0
271.90	365.0
272.90	4886.0
273.90	11166.0
275.00	65872.0
276.00	8368.0
276.90	6089.0
278.00	1184.0
278.90	266.0
281.10	432.0
281.90	265.0
282.90	735.0
284.00	424.0
285.00	927.0
285.90	190.0
288.90	313.0
289.90	206.0
291.00	182.0
291.80	229.0
293.00	1298.0
293.90	360.0
294.90	329.0
296.00	19648.0
296.90	3041.0
297.90	192.0
300.90	202.0
301.90	330.0
302.90	2122.0
304.00	534.0
304.90	166.0
307.90	273.0
309.90	262.0
313.00	181.0
314.00	791.0
314.90	2199.0
315.90	1307.0
317.00	178.0
320.90	591.0
322.00	258.0
323.00	5876.0
324.00	1219.0
325.00	255.0
326.90	1218.0
327.90	677.0
331.90	518.0
333.00	528.0
334.00	3576.0
335.00	842.0
335.90	165.0
341.00	764.0
341.90	203.0
345.90	1497.0
347.00	320.0
352.00	1693.0
353.00	1205.0
354.00	1851.0
354.90	608.0
364.90	8543.0
365.90	1442.0
369.80	161.0
370.90	483.0
372.00	2503.0
373.00	839.0
383.00	726.0
384.00	235.0
390.00	291.0

Instrument :  
BNA\_M  
ClientSampleId :  
DFTPP118

391.00	239.0
400.90	215.0
401.90	1031.0
403.00	1515.0
403.90	641.0
420.90	1428.0
421.90	1250.0
423.00	8773.0
424.00	3052.0
425.00	340.0
441.00	25800.0
442.00	164928.0
443.00	34168.0
444.00	3562.0

**Instrument :**  
BNA\_M  
**ClientSampleId :**  
DFTPP118

m/z	Abundance
37.00	621.0
38.00	1599.0
39.00	10979.0
40.00	1248.0
41.00	490.0
43.10	176.0
44.00	3078.0
45.00	381.0
48.00	194.0
49.00	1258.0
50.00	36872.0
51.00	146368.0
52.00	7506.0
53.00	370.0
55.00	753.0
56.00	4214.0
57.00	9834.0
57.90	361.0
59.00	205.0
61.00	1557.0
62.00	2156.0
63.00	5861.0
64.00	906.0
65.00	2850.0
66.00	192.0
66.80	196.0
68.00	2177.0
69.00	145728.0
70.00	827.0
73.00	1765.0
74.00	14738.0
75.00	23760.0
76.00	7820.0
77.00	170368.0
78.00	11803.0
79.00	10415.0
80.00	7923.0
81.00	11868.0
82.00	2874.0
83.00	2624.0
83.90	555.0
84.90	2084.0
85.90	3732.0
87.00	1555.0
87.90	590.0
88.90	320.0
91.00	2292.0
92.00	2842.0
93.00	19656.0
93.90	1316.0
95.00	228.0
95.90	1007.0
96.80	358.0
97.90	14268.0
99.00	11829.0
99.90	1020.0
100.90	6153.0
101.90	302.0
102.90	2131.0
103.90	4068.0
105.00	3643.0
105.90	1102.0
107.00	48752.0
108.00	7260.0
109.00	1351.0
110.00	84040.0
110.90	13115.0
112.00	1684.0
112.90	601.0
115.90	2433.0
116.90	45952.0
118.00	3186.0
118.80	433.0
119.90	559.0
120.90	176.0
121.90	2915.0
122.90	4974.0
123.90	2185.0
124.90	1996.0
126.00	525.0
127.00	162752.0
128.00	12663.0
128.90	62944.0
129.90	5187.0
131.00	1113.0
132.00	466.0
132.80	449.0
133.90	1684.0
135.00	5233.0
135.90	2084.0
136.90	2958.0
137.90	702.0

**Instrument :**  
BNA\_M  
**ClientSampleId :**  
DFTPP118

138.80	301.0
139.90	845.0
140.90	7867.0
142.00	2477.0
142.90	2258.0
144.00	522.0
144.90	465.0
146.00	1486.0
146.90	4153.0
147.90	10971.0
148.90	2347.0
150.00	538.0
150.90	1046.0
151.60	752.0
152.90	2499.0
154.00	1752.0
154.90	4563.0
156.00	6361.0
157.00	1305.0
157.90	1441.0
158.90	1152.0
160.00	2782.0
160.90	4040.0
161.90	1193.0
163.00	339.0
164.00	420.0
164.90	2948.0
165.90	2270.0
166.90	18488.0
167.90	10692.0
168.90	1869.0
169.90	508.0
170.90	609.0
171.90	1386.0
173.00	1933.0
174.00	3551.0
175.00	6896.0
175.90	1961.0
176.90	3211.0
177.90	882.0
178.90	12695.0
180.00	8859.0
180.90	4306.0
181.90	711.0
182.90	357.0
183.90	932.0
185.00	6202.0
186.00	46816.0
187.00	13438.0
188.00	1260.0
188.90	3182.0
190.00	371.0
190.90	1549.0
191.90	4047.0
193.00	4784.0
194.00	971.0
194.90	395.0
196.00	8850.0
196.80	1617.0
197.90	335232.0
198.90	22688.0
199.90	1731.0
201.40	1412.0
202.90	2534.0
204.00	12753.0
205.00	21664.0
206.00	90024.0
207.00	13340.0
208.00	3233.0
208.90	1224.0
209.90	1460.0
210.90	3397.0
212.90	277.0
214.80	963.0
215.90	1932.0
216.90	25720.0
217.90	3451.0
219.00	376.0
220.90	11730.0
221.90	2986.0
223.00	5599.0
224.00	51160.0
225.00	13102.0
225.90	1380.0
226.90	21792.0
227.90	2995.0
228.90	4366.0
229.90	468.0
231.00	1870.0
231.90	326.0
232.90	492.0
233.90	1311.0
235.00	1407.0
235.90	1256.0
237.00	1894.0
237.90	214.0

**Instrument :**  
BNA\_M  
**ClientSampleId :**  
DFTPP118



238.90	825.0
239.90	718.0
240.90	1228.0
241.90	3025.0
243.00	2944.0
244.00	40976.0
245.00	5156.0
245.90	8191.0
246.90	1724.0
247.90	431.0
248.90	1267.0
250.00	228.0
250.90	323.0
251.90	343.0
252.90	891.0
254.00	995.0
255.00	199360.0
255.90	29096.0
257.00	2307.0
257.90	12354.0
258.90	2047.0
260.00	399.0
260.90	354.0
263.90	237.0
264.90	5105.0
265.90	592.0
269.90	154.0
270.80	346.0
271.90	523.0
273.00	6065.0
273.90	14964.0
275.00	85960.0
276.00	11940.0
276.90	7740.0
277.90	1604.0
278.80	306.0
281.00	530.0
281.90	368.0
282.90	828.0
283.90	512.0
285.00	1427.0
285.90	257.0
288.90	316.0
290.00	248.0
291.00	204.0
292.00	240.0
292.90	1811.0
293.90	525.0
295.00	437.0
295.90	26776.0
297.00	3777.0
297.90	365.0
300.90	264.0
301.90	343.0
303.00	2948.0
303.90	778.0
307.80	261.0
308.90	323.0
309.90	352.0
312.80	188.0
313.90	1352.0
314.90	3292.0
315.90	1491.0
317.00	221.0
321.00	710.0
321.90	394.0
323.00	7995.0
324.00	1497.0
324.80	155.0
326.90	1739.0
327.90	832.0
329.00	218.0
331.90	593.0
333.00	896.0
333.90	5117.0
335.00	1407.0
335.90	159.0
338.90	202.0
341.00	886.0
342.00	222.0
345.90	1873.0
346.80	327.0
351.90	2460.0
352.90	1591.0
354.00	2690.0
354.90	576.0
364.90	11985.0
366.00	1863.0
366.90	163.0
369.80	208.0
370.90	606.0
372.00	4314.0
373.00	801.0
382.90	1301.0
383.80	352.0
389.90	480.0

**Instrument :**  
BNA\_M  
**ClientSampleId :**  
DFTPP118

391.10	312.0
392.00	153.0
400.90	334.0
401.90	1728.0
403.00	2182.0
404.00	796.0
404.80	205.0
414.90	155.0
420.90	2073.0
422.00	1970.0
423.00	13776.0
424.00	3749.0
425.00	420.0
441.00	43280.0
442.00	265536.0
443.00	52352.0
444.00	4556.0
444.90	221.0

**Instrument :**

BNA\_M

**ClientSampleId :**

DFTPP118

m/z	Abundance
37.00	323.0
38.00	835.0
39.00	5739.0
39.90	1111.0
41.00	321.0
44.00	2846.0
44.80	222.0
46.90	151.0
49.00	940.0
50.00	21152.0
51.00	80272.0
52.00	4186.0
52.90	221.0
54.90	323.0
56.00	2483.0
57.00	5586.0
58.00	243.0
61.00	926.0
61.90	1266.0
63.00	3323.0
64.00	536.0
65.00	1403.0
68.00	1314.0
69.00	82480.0
69.90	532.0
73.00	1327.0
74.00	8837.0
75.00	12635.0
76.00	4625.0
77.00	98688.0
78.00	6442.0
79.00	5854.0
80.00	4645.0
81.00	6652.0
81.90	1719.0
83.00	1697.0
83.90	392.0
84.90	1156.0
85.90	1824.0
86.90	741.0
87.90	476.0
89.00	206.0
90.90	1283.0
91.90	1564.0
92.90	10537.0
93.90	789.0
95.90	598.0
96.90	171.0
97.90	8309.0
98.90	6612.0
99.90	439.0
100.90	3480.0
102.90	1213.0
104.00	2483.0
104.90	2274.0
105.90	718.0
107.00	28536.0
108.00	4282.0
109.00	779.0
109.90	48664.0
110.90	7931.0
111.90	814.0
112.90	387.0
114.90	180.0
116.00	1369.0
116.90	26960.0
118.00	1975.0
118.90	270.0
119.90	417.0
121.90	1846.0
122.90	3124.0
123.90	1331.0
124.90	1213.0
126.00	289.0
127.00	93664.0
128.00	6719.0
128.90	37288.0
129.90	3077.0
131.00	514.0
132.00	294.0
132.80	237.0
133.90	1111.0
134.90	3119.0
135.90	1162.0
137.00	2010.0
137.70	313.0
138.90	188.0
139.80	563.0
141.00	4662.0
141.90	1493.0
142.90	1181.0
144.00	371.0

**Instrument :**  
BNA\_M  
**ClientSampleId :**  
DFTPP118

144. 90	263. 0
145. 80	917. 0
146. 90	2763. 0
147. 90	7004. 0
148. 90	1398. 0
149. 90	385. 0
150. 80	509. 0
151. 20	528. 0
151. 80	318. 0
152. 90	1575. 0
153. 90	1084. 0
155. 00	3177. 0
156. 00	3998. 0
156. 90	849. 0
157. 90	846. 0
158. 80	572. 0
159. 90	1566. 0
160. 90	2204. 0
161. 90	823. 0
163. 00	259. 0
163. 90	200. 0
164. 90	1933. 0
165. 90	1403. 0
166. 90	11685. 0
167. 90	6622. 0
168. 90	925. 0
169. 90	346. 0
170. 90	499. 0
171. 90	1075. 0
173. 00	1188. 0
173. 90	2488. 0
175. 00	4034. 0
175. 90	1149. 0
176. 90	1742. 0
177. 80	675. 0
178. 90	8029. 0
179. 90	5126. 0
180. 90	2558. 0
181. 90	292. 0
183. 90	618. 0
185. 00	3896. 0
186. 00	29160. 0
187. 00	8428. 0
187. 90	986. 0
189. 00	1798. 0
190. 00	488. 0
190. 90	1329. 0
191. 90	2801. 0
193. 00	3344. 0
193. 90	677. 0
195. 00	340. 0
195. 90	5330. 0
197. 90	209856. 0
198. 90	13191. 0
199. 90	1173. 0
201. 50	1086. 0
202. 90	1486. 0
203. 90	7755. 0
205. 00	13474. 0
206. 00	56840. 0
207. 00	9559. 0
208. 00	2270. 0
208. 90	617. 0
210. 10	953. 0
210. 90	2569. 0
211. 70	565. 0
214. 90	614. 0
215. 90	1423. 0
216. 90	16704. 0
217. 90	2060. 0
219. 10	172. 0
220. 10	370. 0
220. 90	8082. 0
221. 80	2201. 0
222. 90	3277. 0
224. 00	34200. 0
225. 00	8775. 0
226. 00	868. 0
226. 90	14782. 0
227. 90	1952. 0
228. 90	2911. 0
229. 90	382. 0
230. 90	1097. 0
232. 90	261. 0
233. 90	1053. 0
234. 90	1208. 0
235. 90	776. 0
236. 90	1479. 0
237. 80	191. 0
238. 90	555. 0
240. 00	535. 0
241. 00	650. 0
241. 90	1957. 0
243. 00	2038. 0
244. 00	26312. 0
244. 90	3447. 0

**Instrument :**  
BNA\_M  
**ClientSampleId :**  
DFTPP118

245.90	5403.0
246.90	1203.0
247.90	232.0
248.90	717.0
250.90	246.0
251.80	310.0
252.90	534.0
253.90	569.0
255.00	133568.0
256.00	19248.0
256.90	1606.0
258.00	8118.0
259.00	1201.0
259.90	239.0
260.90	232.0
263.80	163.0
264.90	3599.0
265.90	579.0
266.90	187.0
270.00	153.0
270.80	362.0
271.90	381.0
272.90	4051.0
273.90	10555.0
275.00	56424.0
275.90	7745.0
276.90	5399.0
278.00	795.0
278.80	202.0
281.00	315.0
281.90	245.0
283.00	651.0
283.90	495.0
285.00	944.0
285.90	185.0
288.80	233.0
290.00	225.0
292.00	160.0
292.90	1494.0
293.80	337.0
294.90	253.0
295.90	18832.0
296.90	2802.0
298.00	195.0
300.90	299.0
301.90	259.0
303.00	2193.0
303.90	505.0
307.80	301.0
308.80	206.0
309.90	225.0
312.90	263.0
314.00	949.0
315.00	2095.0
316.00	1339.0
316.80	152.0
321.00	491.0
322.00	285.0
323.00	5992.0
324.00	1194.0
326.90	1360.0
327.90	524.0
331.90	413.0
332.90	638.0
334.00	3839.0
335.00	994.0
341.00	738.0
341.90	229.0
345.90	1388.0
346.90	228.0
352.00	2043.0
353.00	1268.0
354.00	1776.0
354.90	516.0
364.90	9429.0
365.90	1244.0
370.00	231.0
370.90	615.0
372.00	3300.0
372.90	779.0
383.00	844.0
384.00	265.0
389.90	326.0
390.90	262.0
392.00	225.0
401.00	233.0
401.90	1252.0
403.00	1861.0
403.90	718.0
404.90	167.0
414.80	171.0
421.00	1720.0
422.00	1458.0
423.00	11030.0
424.00	3315.0
425.00	249.0

Instrument :  
BNA\_M  
ClientSampleId :  
DFTPP118

441.00	34976.0
442.00	218816.0
443.00	40544.0
444.00	3683.0
444.90	270.0

**Instrument :**

BNA\_M

**ClientSampleId :**

DFTPP118