

Data Path : Z:\svoasrv\HPCHEM1\BNA_M\Data\BM050925\
 Data File : BM050161.D
 Acq On : 09 May 2025 16:07
 Operator : RC/JU
 Sample : Q1986-09
 Misc :
 ALS Vial : 6 Sample Multiplier: 1

Instrument :
 BNA_M
 ClientSampleId :
 COMP-218

Integration Parameters: rteint.p
 Integrator: RTE
 Smoothing : ON Filtering: 5
 Sampling : 1 Min Area: 3 % of largest Peak
 Start Thrs: 0.2 Max Peaks: 100
 Stop Thrs : 0 Peak Location: TOP

If leading or trailing edge < 100 prefer < Baseline drop else tangent >
 Peak separation: 5

Method : Z:\svoasrv\HPCHEM1\BNA_M\Methods\8270-BM042825.M
 Title : ASP BNA STANDARDS FOR 5 POINT CALIBRATION

Signal : TIC: BM050161.D\data.ms

peak #	R.T. min	first scan	max scan	last scan	PK TY	peak height	corr. area	corr. % max.	% of total
1	4.863	314	319	328	rBV	319572	467518	4.68%	0.738%
2	5.334	393	399	430	rBV	3245353	5290445	52.97%	8.354%
3	6.934	664	671	702	rBV	2738987	5575223	55.82%	8.803%
4	7.740	801	808	819	rBV	1158964	1900552	19.03%	3.001%
5	8.904	997	1006	1028	rBV	1655807	3385836	33.90%	5.346%
6	10.533	1276	1283	1304	rBV	1194520	2502816	25.06%	3.952%
7	13.004	1695	1703	1731	rBV	4874493	7820892	78.30%	12.349%
8	14.392	1930	1939	1956	rBV	2120360	3513718	35.18%	5.548%
9	15.751	2164	2170	2186	rBV	1541975	2321401	23.24%	3.666%
10	15.892	2187	2194	2219	rVV	4023499	6988544	69.97%	11.035%
11	16.315	2261	2266	2275	rVB	209519	321359	3.22%	0.507%
12	17.145	2400	2407	2422	rBV	2275229	3700698	37.05%	5.844%
13	18.039	2554	2559	2585	rBV	1069344	2022383	20.25%	3.193%
14	18.898	2698	2705	2712	rBV3	173301	379132	3.80%	0.599%
15	19.321	2772	2777	2790	rBV2	235913	560608	5.61%	0.885%
16	19.762	2847	2852	2863	rBV	7877953	9988261	100.00%	15.772%
17	20.051	2898	2901	2910	rBV5	100574	202364	2.03%	0.320%
18	21.056	3068	3072	3080	rVB	354367	558944	5.60%	0.883%
19	21.386	3123	3128	3144	rVB2	1820383	2971146	29.75%	4.692%
20	24.386	3630	3638	3657	rVB	1021514	2858038	28.61%	4.513%

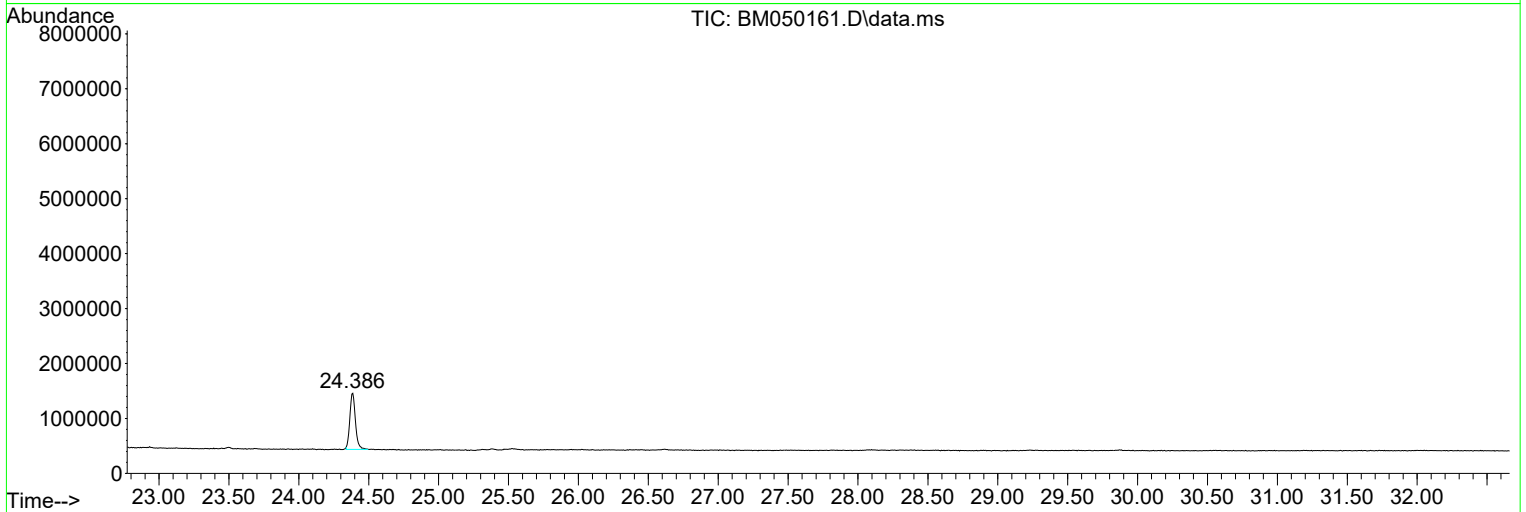
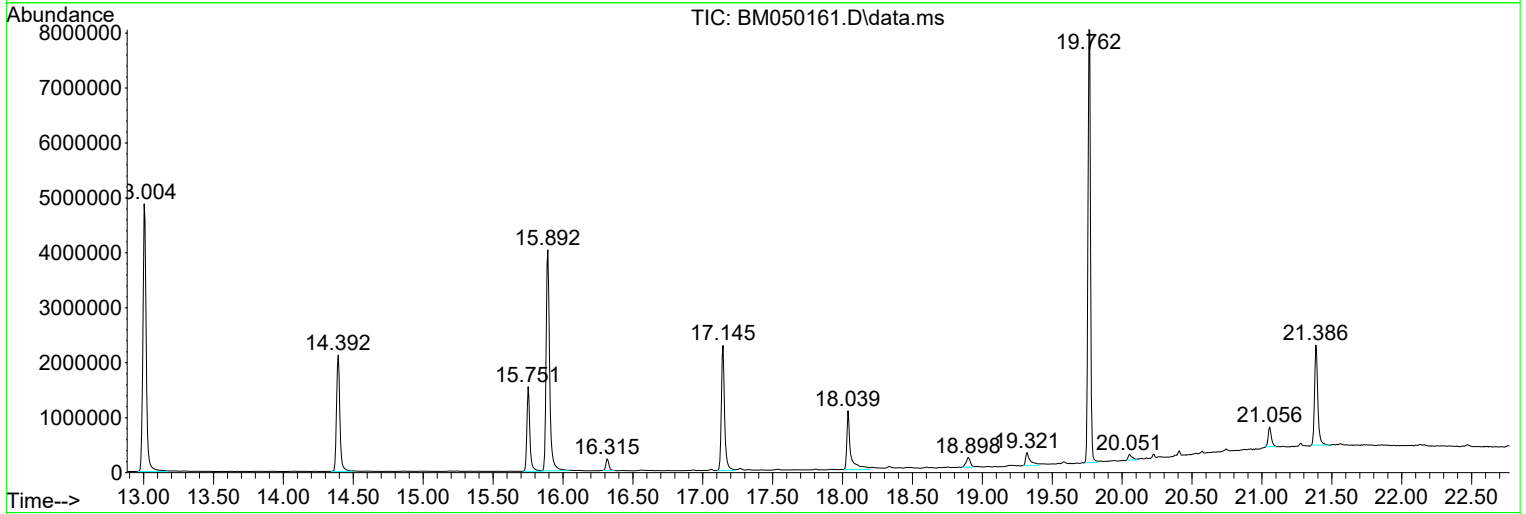
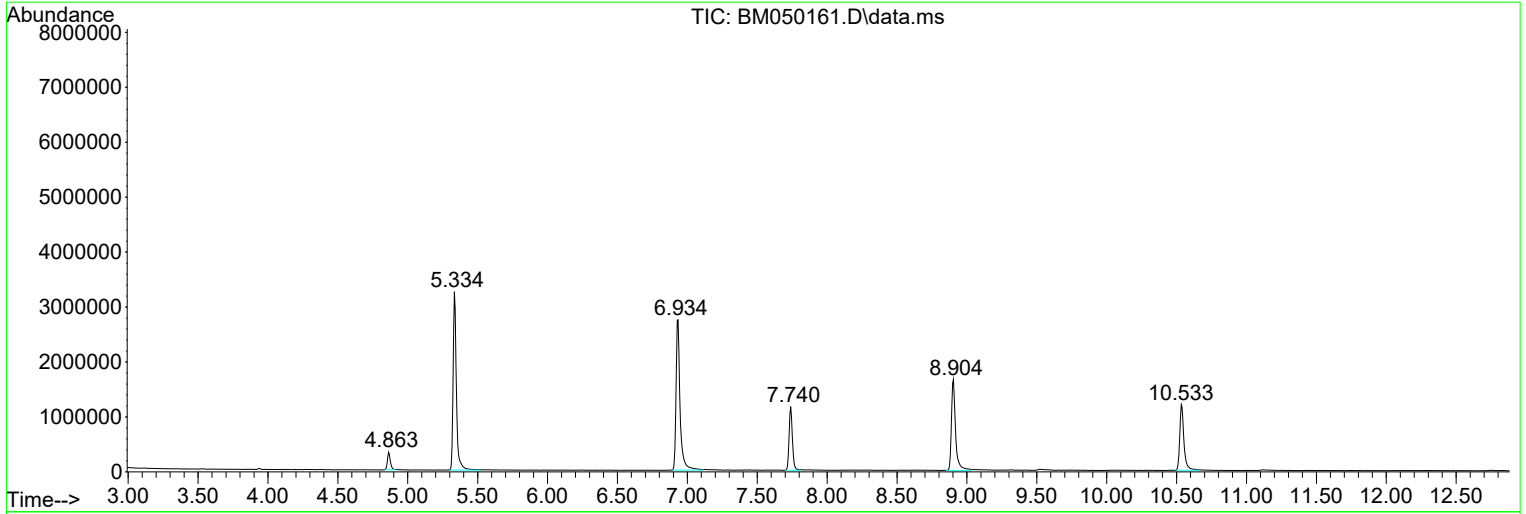
Sum of corrected areas: 63329878

Data Path : Z:\svoasrv\HPCHEM1\BNA_M\Data\BM050925\
 Data File : BM050161.D
 Acq On : 09 May 2025 16:07
 Operator : RC/JU
 Sample : Q1986-09
 Misc :
 ALS Vial : 6 Sample Multiplier: 1

Instrument :
 BNA_M
 ClientSampleId :
 COMP-218

Quant Method : Z:\svoasrv\HPCHEM1\BNA_M\Methods\8270-BM042825.M
 Quant Title : ASP BNA STANDARDS FOR 5 POINT CALIBRATION

TIC Library : C:\Database\NIST20.L
 TIC Integration Parameters: LSCINT.P



Data Path : Z:\svoasrv\HPCHEM1\BNA_M\Data\BM050925\
 Data File : BM050161.D
 Acq On : 09 May 2025 16:07
 Operator : RC/JU
 Sample : Q1986-09
 Misc :
 ALS Vial : 6 Sample Multiplier: 1

Instrument :
 BNA_M
 ClientSampleId :
 COMP-218

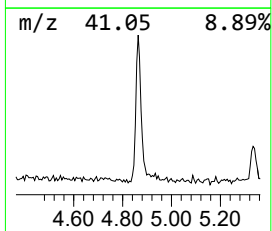
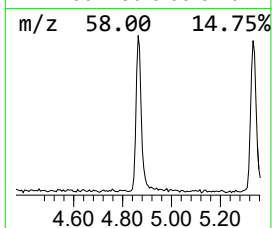
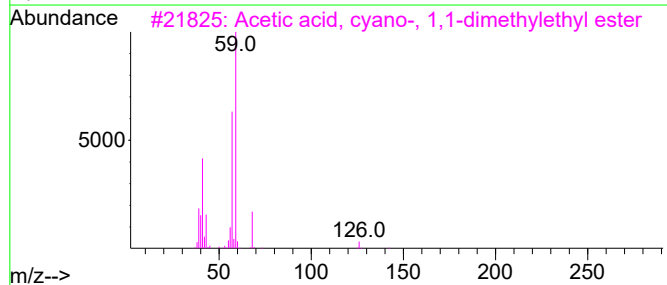
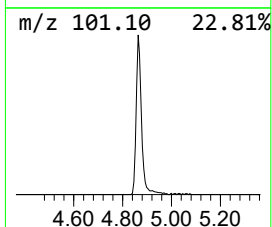
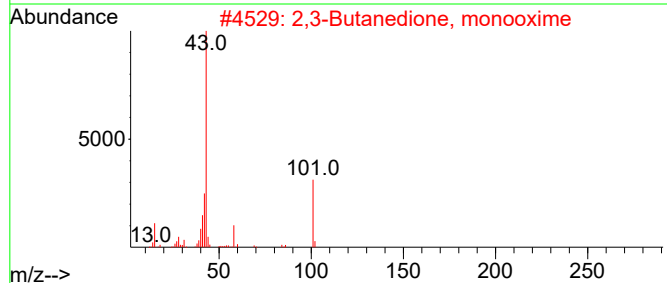
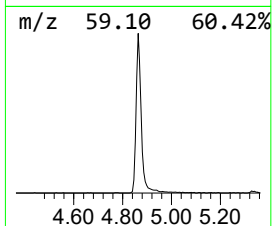
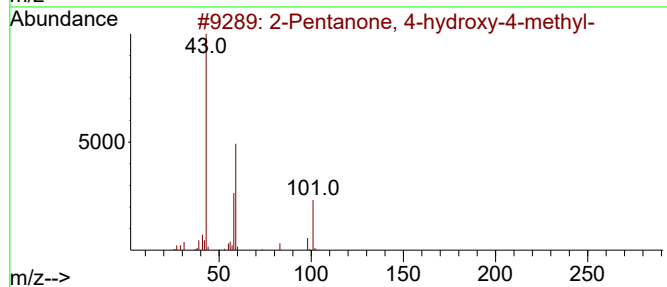
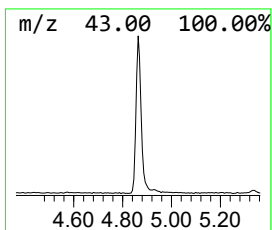
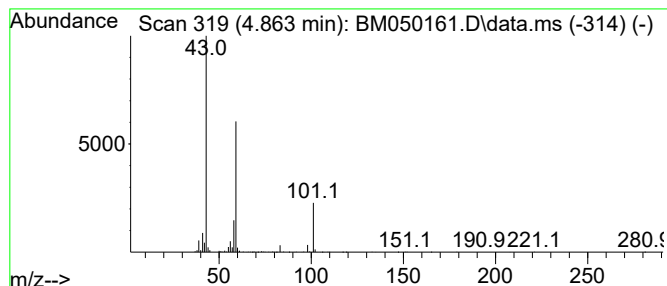
Quant Method : Z:\svoasrv\HPCHEM1\BNA_M\Methods\8270-BM042825.M
 Quant Title : ASP BNA STANDARDS FOR 5 POINT CALIBRATION

TIC Library : C:\Database\NIST20.L
 TIC Integration Parameters: LSCINT.P

 Peak Number 1 2-Pentanone, 4-hydroxy-4-me... Concentration Rank 3

R.T.	EstConc	Area	Relative to ISTD	R.T.
4.863	4.92 ng	467518	1,4-Dichlorobenzene-d4	7.740

Hit#	of 5	Tentative ID	MW	MolForm	CAS#	Qual
1		2-Pentanone, 4-hydroxy-4-methyl-	116	C6H12O2	000123-42-2	56
2		2,3-Butanedione, monooxime	101	C4H7NO2	000057-71-6	25
3		Acetic acid, cyano-, 1,1-dimethyl...	141	C7H11NO2	001116-98-9	23
4		1-Propen-2-ol, acetate	100	C5H8O2	000108-22-5	10
5		Morpholine, 4-methyl-	101	C5H11NO	000109-02-4	9



Data Path : Z:\svoasrv\HPCHEM1\BNA_M\Data\BM050925\
 Data File : BM050161.D
 Acq On : 09 May 2025 16:07
 Operator : RC/JU
 Sample : Q1986-09
 Misc :
 ALS Vial : 6 Sample Multiplier: 1

Instrument :
 BNA_M
 ClientSampleId :
 COMP-218

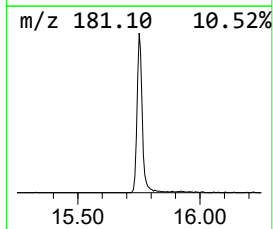
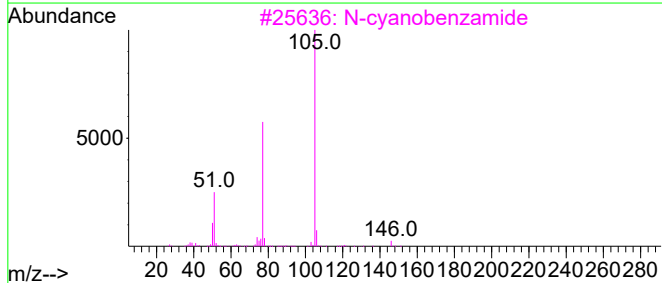
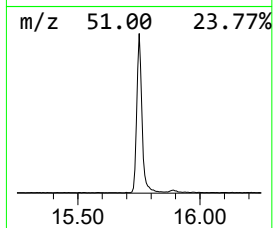
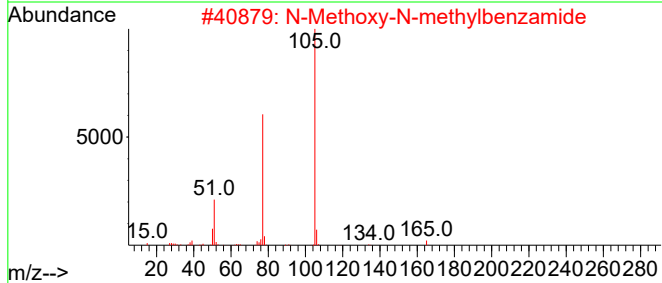
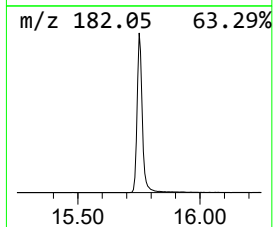
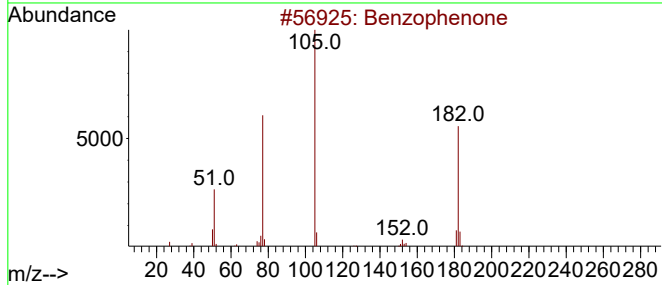
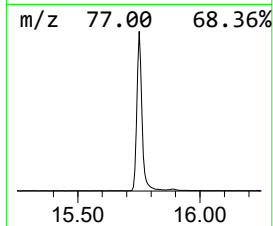
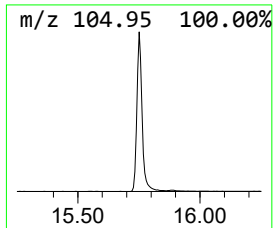
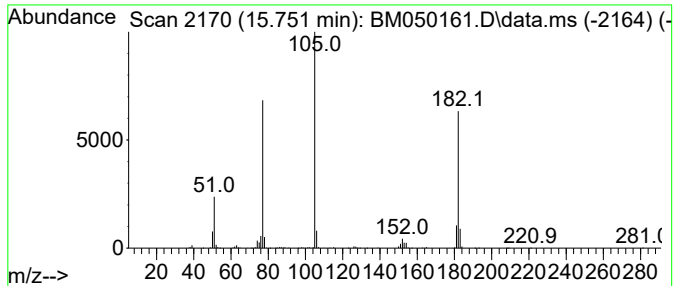
Quant Method : Z:\svoasrv\HPCHEM1\BNA_M\Methods\8270-BM042825.M
 Quant Title : ASP BNA STANDARDS FOR 5 POINT CALIBRATION

TIC Library : C:\Database\NIST20.L
 TIC Integration Parameters: LSCINT.P

 Peak Number 2 Benzophenone Concentration Rank 1

R.T.	EstConc	Area	Relative to ISTD	R.T.
15.751	13.21 ng	2321400	Acenaphthene-d10	14.392

Hit#	of 5	Tentative ID	MW	MolForm	CAS#	Qual
1		Benzophenone	182	C13H10O	000119-61-9	96
2		N-Methoxy-N-methylbenzamide	165	C9H11NO2	006919-61-5	49
3		N-cyanobenzamide	146	C8H6N2O	015150-25-1	47
4		1-Propanone, 3-chloro-1-phenyl-	168	C9H9ClO	000936-59-4	47
5		1-Propanone, 2-bromo-1-phenyl-	212	C9H9BrO	002114-00-3	47



Data Path : Z:\svoasrv\HPCHEM1\BNA_M\Data\BM050925\
 Data File : BM050161.D
 Acq On : 09 May 2025 16:07
 Operator : RC/JU
 Sample : Q1986-09
 Misc :
 ALS Vial : 6 Sample Multiplier: 1

Instrument :
 BNA_M
 ClientSampleId :
 COMP-218

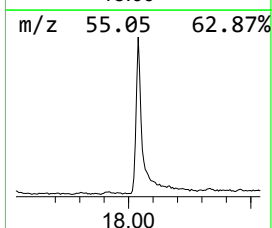
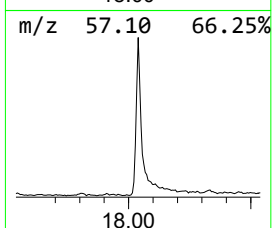
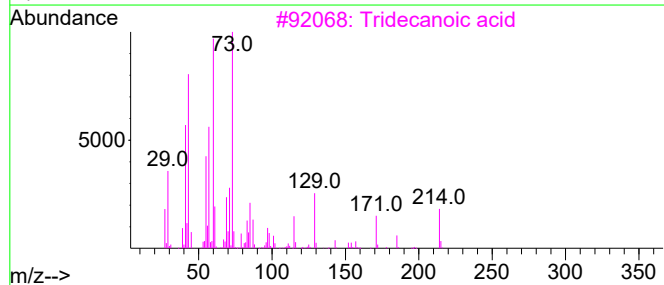
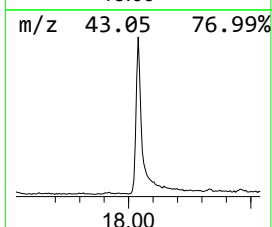
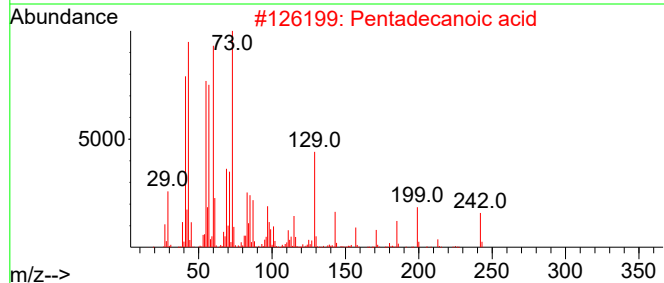
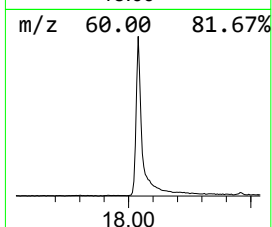
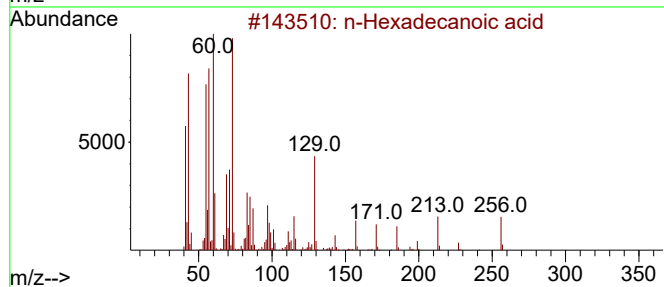
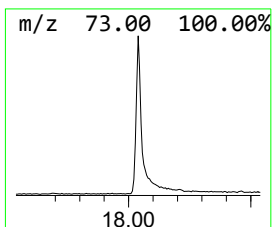
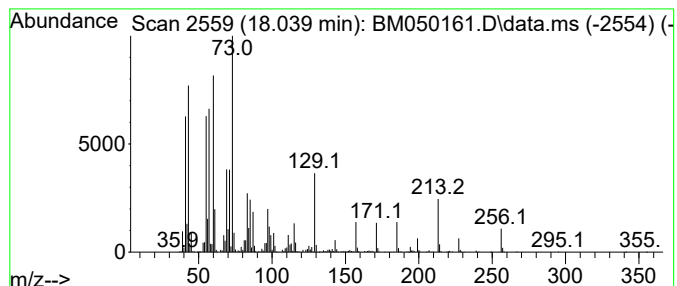
Quant Method : Z:\svoasrv\HPCHEM1\BNA_M\Methods\8270-BM042825.M
 Quant Title : ASP BNA STANDARDS FOR 5 POINT CALIBRATION

TIC Library : C:\Database\NIST20.L
 TIC Integration Parameters: LSCINT.P

 Peak Number 3 n-Hexadecanoic acid Concentration Rank 2

R.T.	EstConc	Area	Relative to ISTD	R.T.
18.039	10.93 ng	2022380	Phenanthrene-d10	17.145

Hit#	of 5	Tentative ID	MW	MolForm	CAS#	Qual
1		n-Hexadecanoic acid	256	C16H32O2	000057-10-3	99
2		Pentadecanoic acid	242	C15H30O2	001002-84-2	91
3		Tridecanoic acid	214	C13H26O2	000638-53-9	89
4		Tetradecanoic acid	228	C14H28O2	000544-63-8	89
5		Nonanoic acid	158	C9H18O2	000112-05-0	45



Data Path : Z:\svoasrv\HPCHEM1\BNA_M\Data\BM050925\
 Data File : BM050161.D
 Acq On : 09 May 2025 16:07
 Operator : RC/JU
 Sample : Q1986-09
 Misc :
 ALS Vial : 6 Sample Multiplier: 1

Instrument :
 BNA_M
 ClientSampleId :
 COMP-218

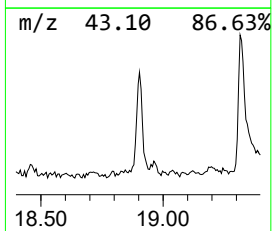
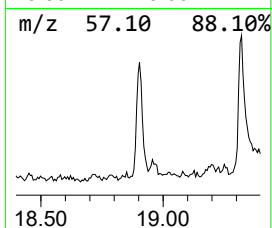
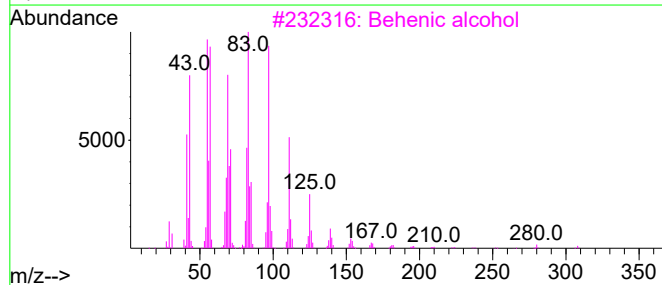
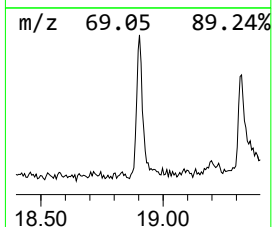
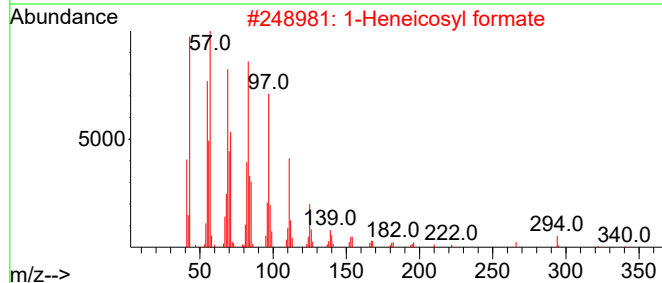
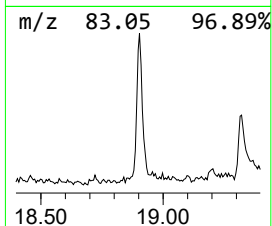
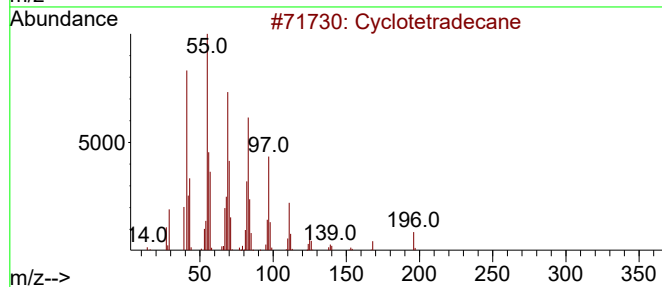
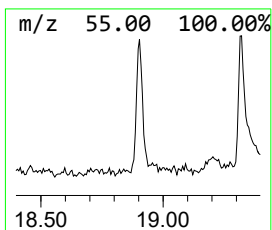
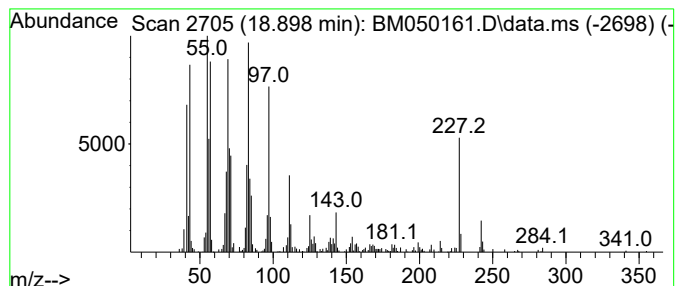
Quant Method : Z:\svoasrv\HPCHEM1\BNA_M\Methods\8270-BM042825.M
 Quant Title : ASP BNA STANDARDS FOR 5 POINT CALIBRATION

TIC Library : C:\Database\NIST20.L
 TIC Integration Parameters: LSCINT.P

 Peak Number 4 Cyclotetradecane Concentration Rank 6

R.T.	EstConc	Area	Relative to ISTD	R.T.
18.898	2.05 ng	379132	Phenanthrene-d10	17.145

Hit#	of	5	Tentative ID	MW	MolForm	CAS#	Qual
1			Cyclotetradecane	196	C14H28	000295-17-0	96
2			1-Heneicosyl formate	340	C22H44O2	077899-03-7	93
3			Behenic alcohol	326	C22H46O	000661-19-8	93
4			n-Nonadecanol-1	284	C19H40O	001454-84-8	93
5			Trichloroacetic acid, pentadecyl...	372	C17H31Cl3O2	074339-53-0	91



Data Path : Z:\svoasrv\HPCHEM1\BNA_M\Data\BM050925\
 Data File : BM050161.D
 Acq On : 09 May 2025 16:07
 Operator : RC/JU
 Sample : Q1986-09
 Misc :
 ALS Vial : 6 Sample Multiplier: 1

Instrument :
 BNA_M
 ClientSampleId :
 COMP-218

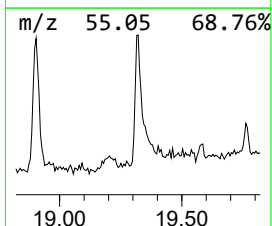
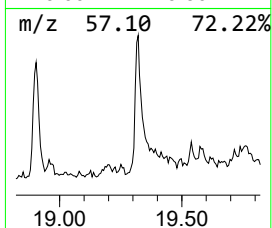
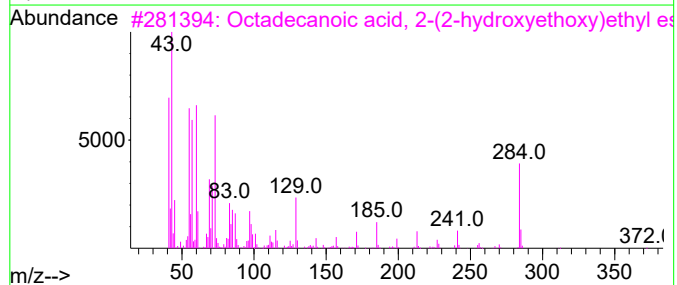
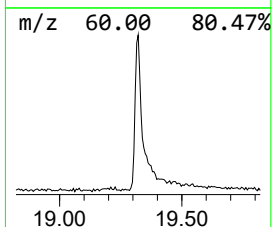
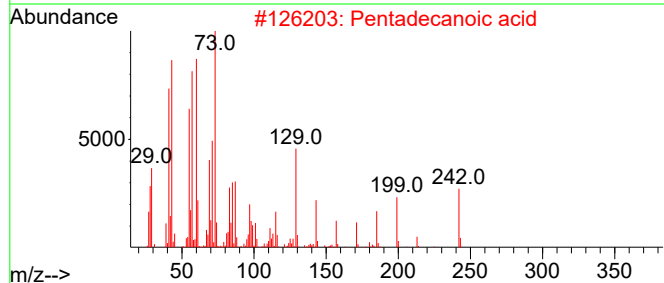
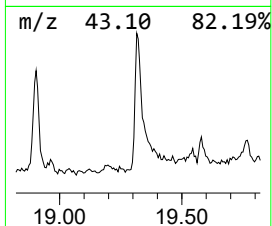
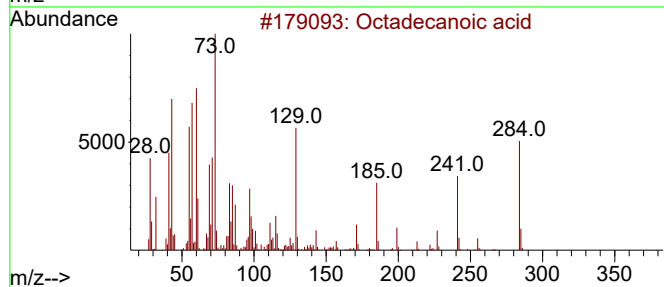
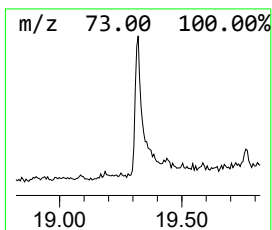
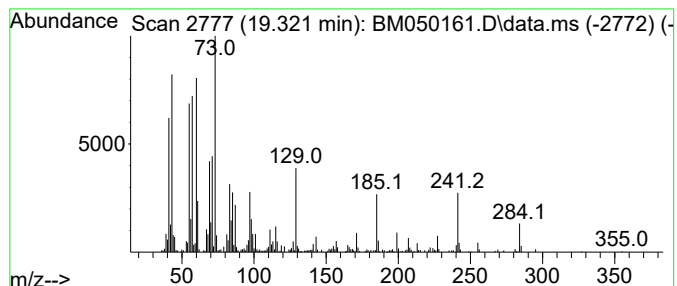
Quant Method : Z:\svoasrv\HPCHEM1\BNA_M\Methods\8270-BM042825.M
 Quant Title : ASP BNA STANDARDS FOR 5 POINT CALIBRATION

TIC Library : C:\Database\NIST20.L
 TIC Integration Parameters: LSCINT.P

 Peak Number 5 Octadecanoic acid Concentration Rank 4

R.T.	EstConc	Area	Relative to ISTD	R.T.
19.321	3.77 ng	560608	Chrysene-d12	21.386

Hit#	of	5	Tentative ID	MW	MolForm	CAS#	Qual
1			Octadecanoic acid	284	C18H36O2	000057-11-4	99
2			Pentadecanoic acid	242	C15H30O2	001002-84-2	93
3			Octadecanoic acid, 2-(2-hydroxye...	372	C22H44O4	000106-11-6	91
4			n-Hexadecanoic acid	256	C16H32O2	000057-10-3	90
5			Tetradecanoic acid	228	C14H28O2	000544-63-8	80



Data Path : Z:\svoasrv\HPCHEM1\BNA_M\Data\BM050925\
 Data File : BM050161.D
 Acq On : 09 May 2025 16:07
 Operator : RC/JU
 Sample : Q1986-09
 Misc :
 ALS Vial : 6 Sample Multiplier: 1

Instrument :
 BNA_M
 ClientSampleId :
 COMP-218

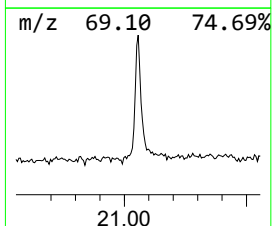
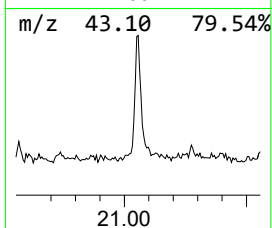
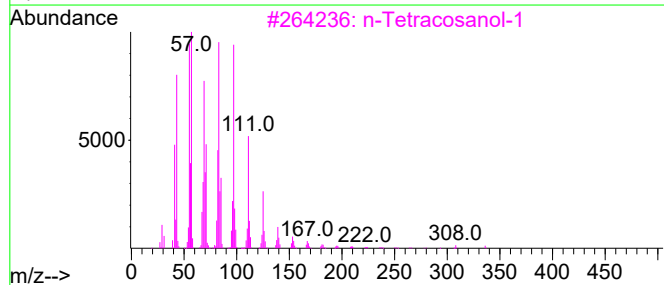
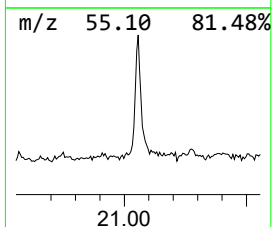
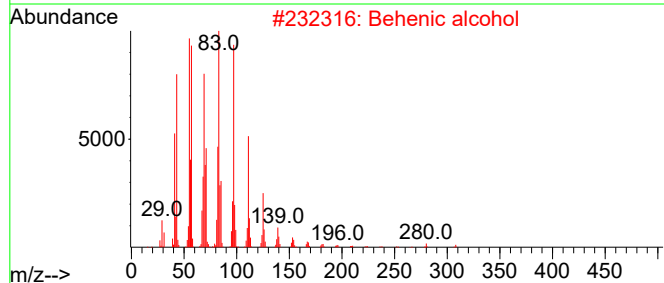
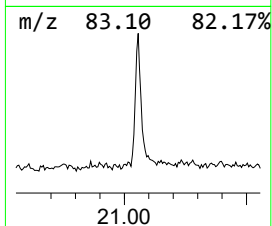
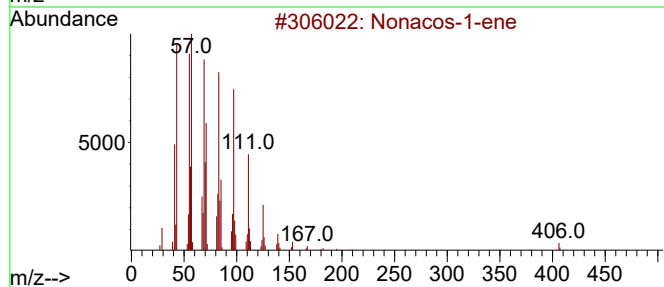
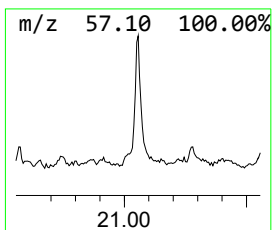
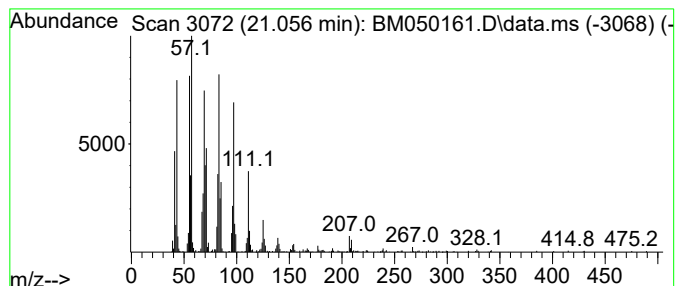
Quant Method : Z:\svoasrv\HPCHEM1\BNA_M\Methods\8270-BM042825.M
 Quant Title : ASP BNA STANDARDS FOR 5 POINT CALIBRATION

TIC Library : C:\Database\NIST20.L
 TIC Integration Parameters: LSCINT.P

 Peak Number 6 Nonacos-1-ene Concentration Rank 5

R.T.	EstConc	Area	Relative to ISTD	R.T.
21.056	3.76 ng	558944	Chrysene-d12	21.386

Hit#	of 5	Tentative ID	MW	MolForm	CAS#	Qual
1		Nonacos-1-ene	406	C29H58	018835-35-3	94
2		Behenic alcohol	326	C22H46O	000661-19-8	94
3		n-Tetracosanol-1	354	C24H50O	000506-51-4	94
4		1-Tetracosene	336	C24H48	010192-32-2	91
5		Nonadecyl trifluoroacetate	380	C21H39F3O2	1000351-76-3	91



Data Path : Z:\svoasrv\HPCHEM1\BNA_M\Data\BM050925\
 Data File : BM050161.D
 Acq On : 09 May 2025 16:07
 Operator : RC/JU
 Sample : Q1986-09
 Misc :
 ALS Vial : 6 Sample Multiplier: 1

Instrument :
 BNA_M
 ClientSampleId :
 COMP-218

Quant Method : Z:\svoasrv\HPCHEM1\BNA_M\Methods\8270-BM042825.M
 Quant Title : ASP BNA STANDARDS FOR 5 POINT CALIBRATION

TIC Library : C:\Database\NIST20.L
 TIC Integration Parameters: LSCINT.P

TIC Top Hit name	RT	EstConc	Units	Response	--Internal Standard--			
					#	RT	Resp	Conc
2-Pentanone, 4-...	4.863	4.9	ng	467518	1	7.740	1900550	20.0
Benzophenone	15.751	13.2	ng	2321400	3	14.392	3513720	20.0
n-Hexadecanoic ...	18.039	10.9	ng	2022380	4	17.145	3700700	20.0
Cyclotetradecane	18.898	2.0	ng	379132	4	17.145	3700700	20.0
Octadecanoic acid	19.321	3.8	ng	560608	5	21.386	2971150	20.0
Nonacos-1-ene	21.056	3.8	ng	558944	5	21.386	2971150	20.0