

Data Path : Z:\HPCHEM1\BNA M\DATA\BM051117\
 Data File : BM009993.D
 Acq On : 11 May 2017 20:18
 Operator : SJ/MA
 Sample : PB98840BL
 Misc :
 ALS Vial : 11 Sample Multiplier: 1

Instrument :
 BNA_M
 ClientSampleId :
 PB98840BL

Quant Time: May 12 06:54:55 2017
 Quant Method : Z:\HPCHEM1\BNA M\METHODS\8270-BM051117.M
 Quant Title : ASP BNA STANDARDS FOR 5 POINT CALIBRATION
 QLast Update : Thu May 11 19:50:16 2017
 Response via : Initial Calibration

Internal Standards	R.T.	QIon	Response	Conc	Units	Dev(Min)
1) 1,4-Dichlorobenzene-d4	7.76	152	56633	20.00	ng	-0.02
21) Naphthalene-d8	10.56	136	229459	20.00	ng	-0.02
38) Acenaphthene-d10	14.42	164	143726	20.00	ng	-0.02
63) Phenanthrene-d10	17.17	188	364360	20.00	ng	-0.02
75) Chrysene-d12	21.36	240	454842	20.00	ng	-0.02
86) Perylene-d12	23.66	264	344044	20.00	ng	-0.03
System Monitoring Compounds						
5) 2-Fluorophenol	5.35	112	514375	142.13	ng	-0.02
7) Phenol-d6	6.95	99	779268	134.39	ng	-0.02
23) Nitrobenzene-d5	8.93	82	542430	86.39	ng	-0.02
41) 2,4,6-Tribromophenol	15.92	330	266202	135.33	ng	-0.02
44) 2-Fluorobiphenyl	13.03	172	968933	90.16	ng	-0.02
78) Terphenyl-d14	19.80	244	1829364	84.77	ng	-0.02

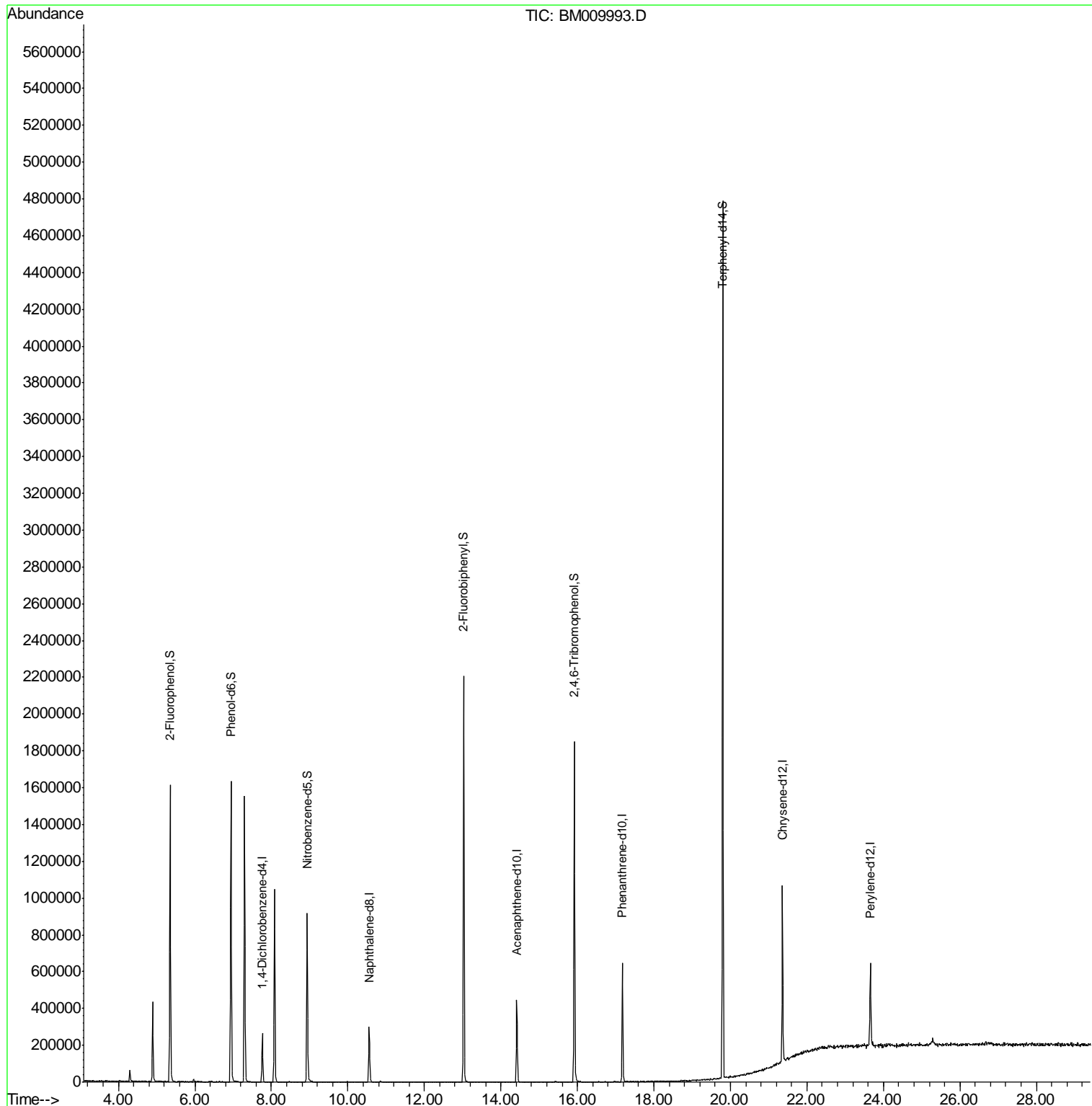
Target Compounds Qvalue

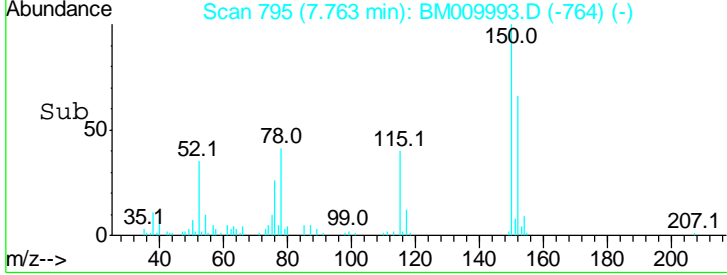
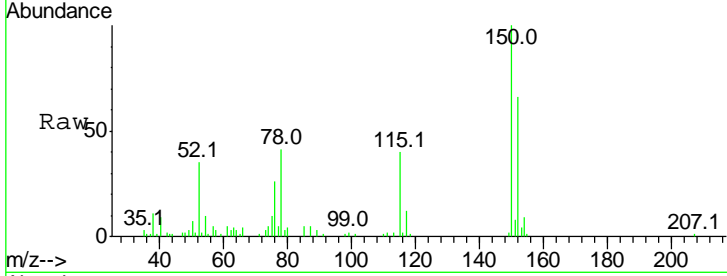
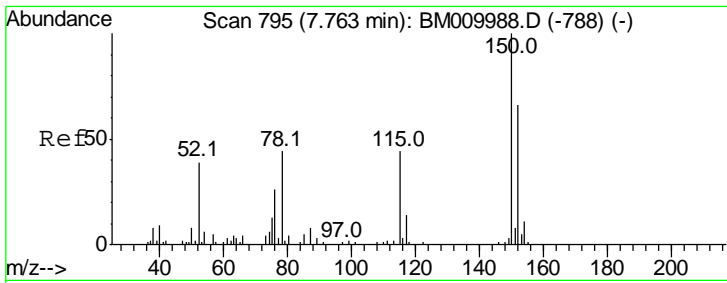
(#) = qualifier out of range (m) = manual integration (+) = signals summed

Data Path : Z:\HPCHEM1\BNA M\DATA\BM051117\
 Data File : BM009993.D
 Acq On : 11 May 2017 20:18
 Operator : SJ/MA
 Sample : PB98840BL
 Misc :
 ALS Vial : 11 Sample Multiplier: 1

Instrument :
 BNA_M
 ClientSampled :
 PB98840BL

Quant Time: May 12 06:54:55 2017
 Quant Method : Z:\HPCHEM1\BNA M\METHODS\8270-BM051117.M
 Quant Title : ASP BNA STANDARDS FOR 5 POINT CALIBRATION
 QLast Update : Thu May 11 19:50:16 2017
 Response via : Initial Calibration

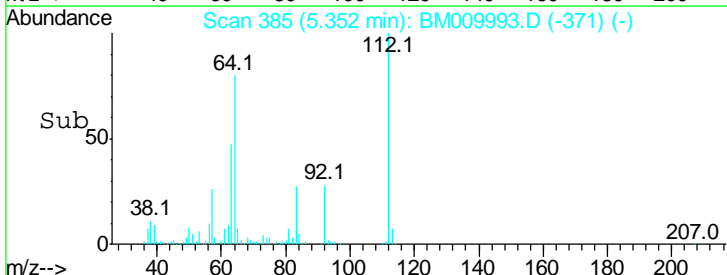
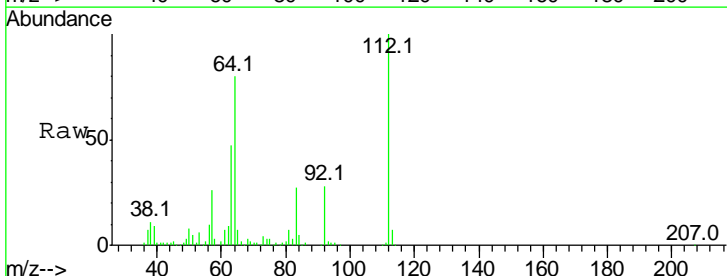
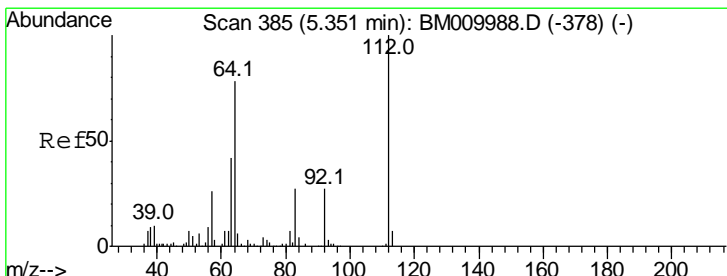
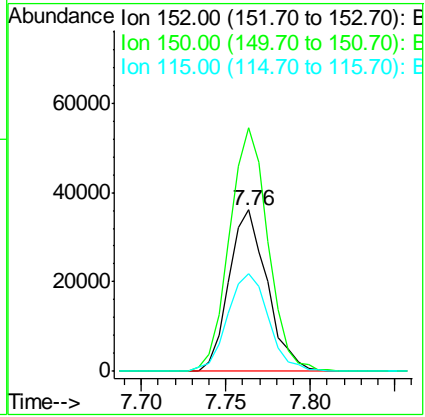




#1
 1,4-Dichlorobenzene-d4
 Concen: 20.00 ng
 RT: 7.76 min Scan# 795
 Delta R.T. -0.02 min
 Lab File: BM009993.D
 Acq: 11 May 2017 20:18

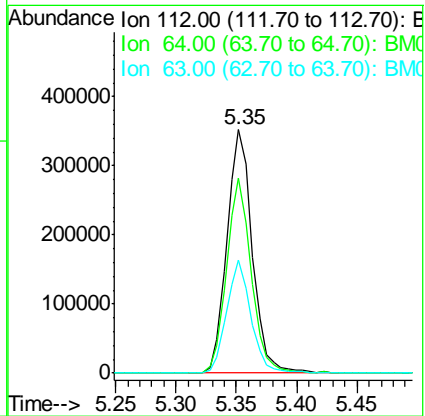
Instrument :
 BNA_M
ClientSampled :
 PB98840BL

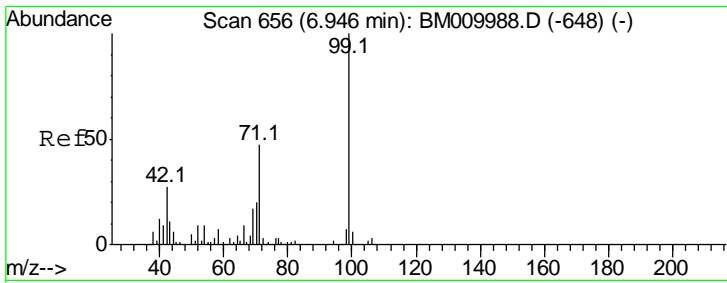
Tgt Ion	Resp	Lower	Upper
152	56633		
150	150.9	119.5	179.3
115	60.6	43.0	64.4



#5
 2-Fluorophenol
 Concen: 142.13 ng
 RT: 5.35 min Scan# 385
 Delta R.T. -0.02 min
 Lab File: BM009993.D
 Acq: 11 May 2017 20:18

Tgt Ion	Resp	Lower	Upper
112	514375		
112	100		
64	79.9	38.6	57.8#
63	46.6	19.3	28.9#

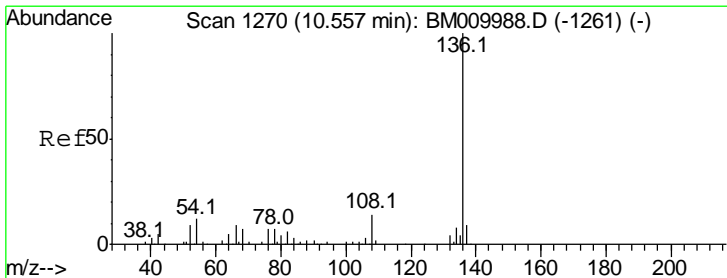
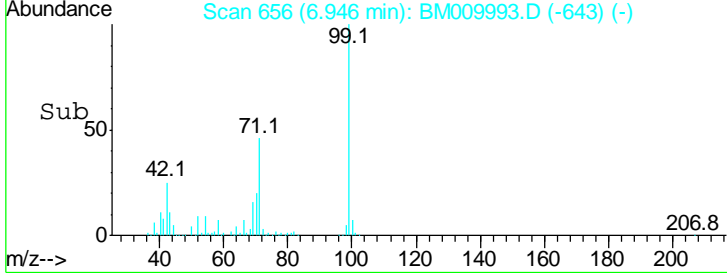
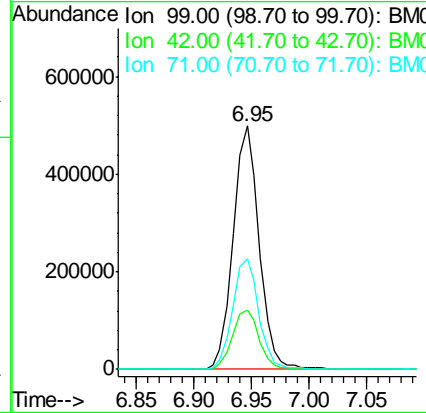
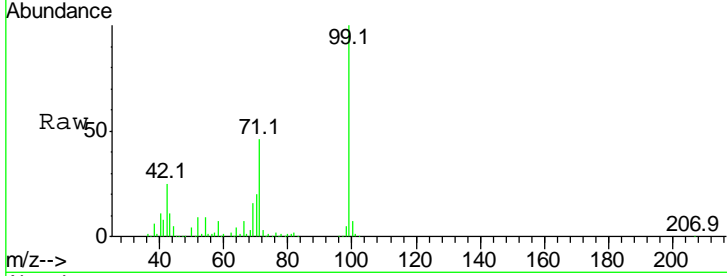




#7
 Phenol-d6
 Concen: 134.39 ng
 RT: 6.95 min Scan# 656
 Delta R.T. -0.02 min
 Lab File: BM009993.D
 Acq: 11 May 2017 20:18

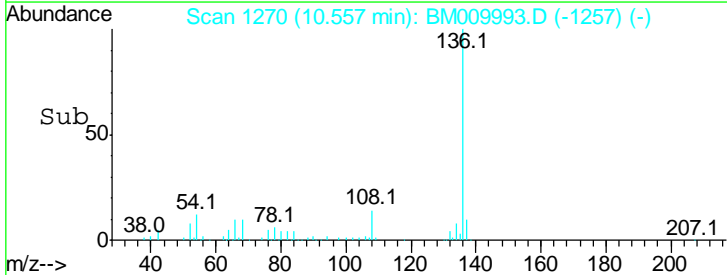
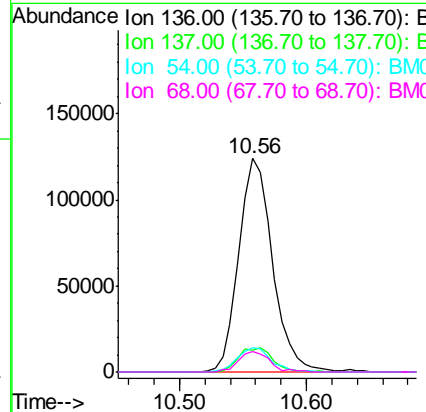
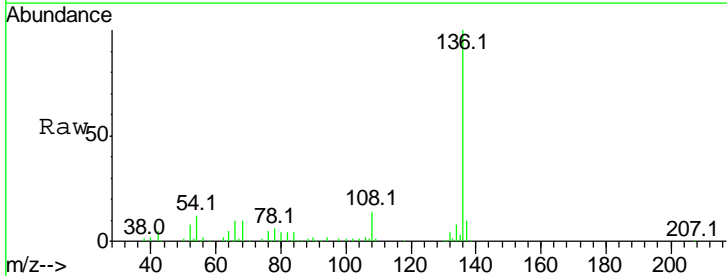
Instrument :
 BNA_M
 ClientSampled :
 PB98840BL

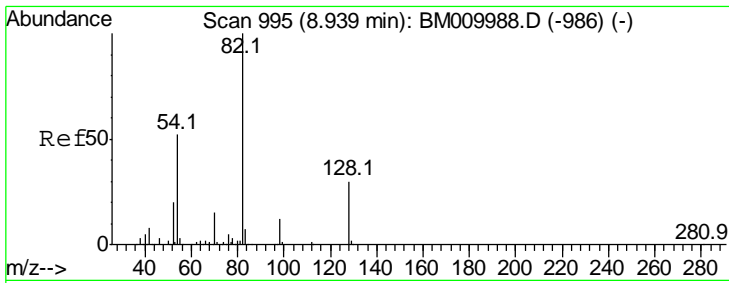
Tgt Ion	Resp	Lower	Upper
99	100		
42	24.5	11.0	16.4#
71	45.6	23.4	35.2#



#21
 Naphthalene-d8
 Concen: 20.00 ng
 RT: 10.56 min Scan# 1270
 Delta R.T. -0.02 min
 Lab File: BM009993.D
 Acq: 11 May 2017 20:18

Tgt Ion	Resp	Lower	Upper
136	100		
137	10.1	8.7	13.1
54	11.5	4.6	6.8#
68	9.6	3.7	5.5#

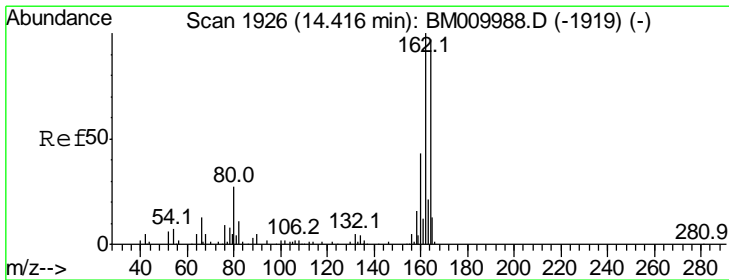
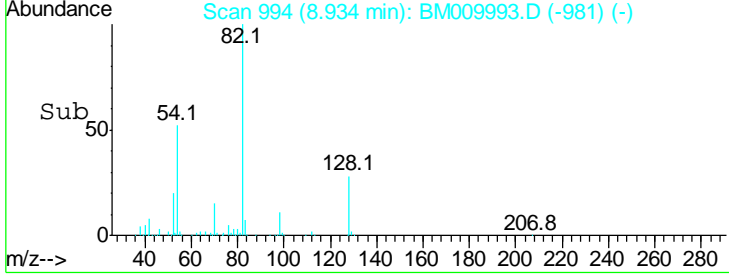
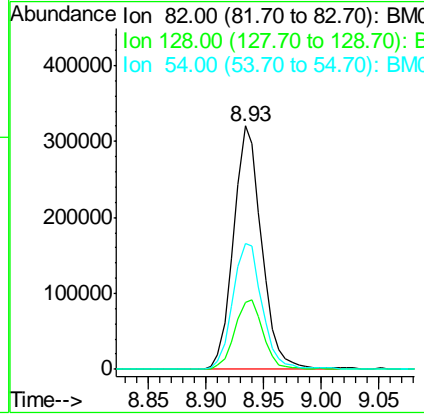
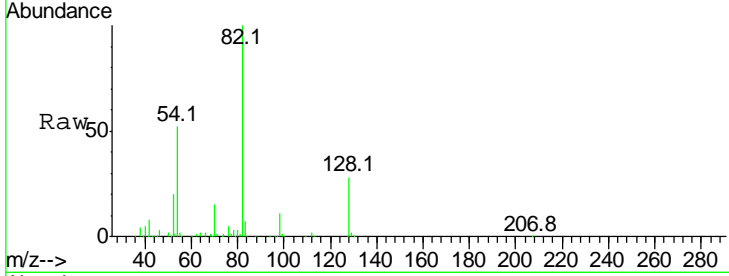




#23
 Nitrobenzene-d5
 Concen: 86.39 ng
 RT: 8.93 min Scan# 994
 Delta R.T. -0.02 min
 Lab File: BM009993.D
 Acq: 11 May 2017 20:18

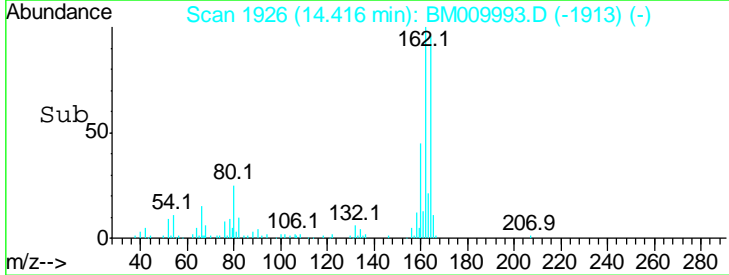
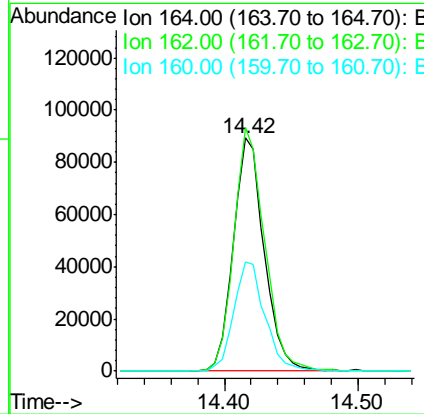
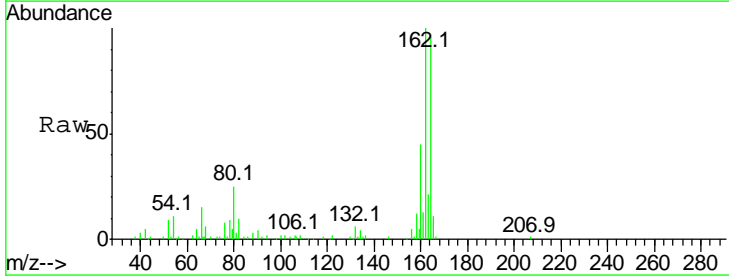
Instrument :
 BNA_M
ClientSampled :
 PB98840BL

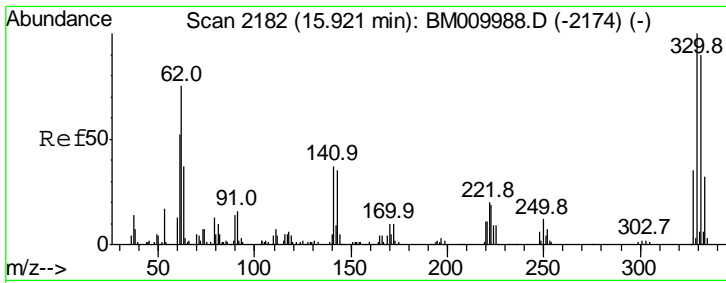
Tgt Ion	Resp	Lower	Upper
82	100		
128	27.6	32.8	49.2#
54	51.8	40.6	60.8



#38
 Acenaphthene-d10
 Concen: 20.00 ng
 RT: 14.42 min Scan# 1926
 Delta R.T. -0.02 min
 Lab File: BM009993.D
 Acq: 11 May 2017 20:18

Tgt Ion	Resp	Lower	Upper
164	100		
162	104.4	82.4	123.6
160	46.7	35.8	53.6

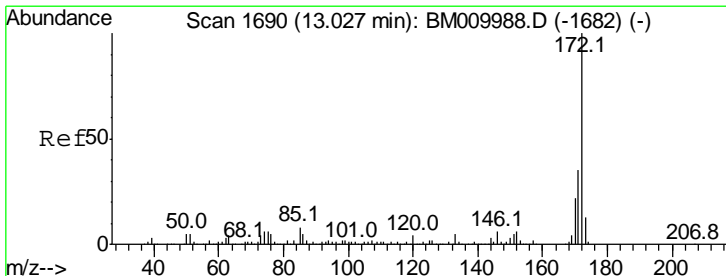
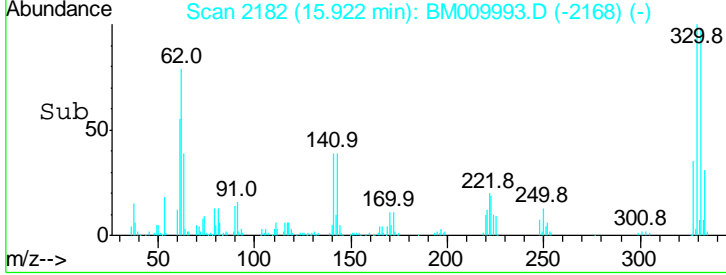
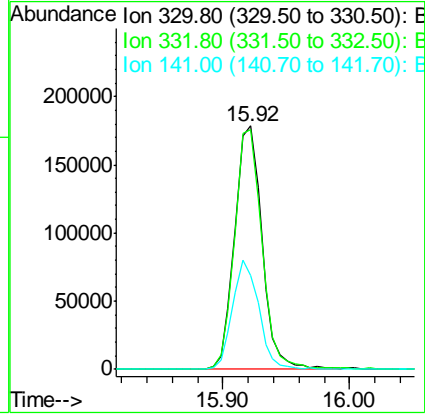
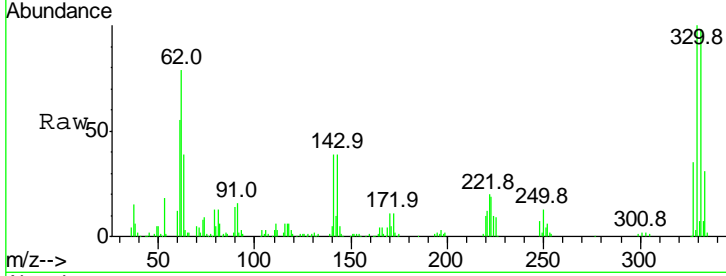




#41
 2,4,6-Tribromophenol
 Concen: 135.33 ng
 RT: 15.92 min Scan# 2182
 Delta R.T. -0.02 min
 Lab File: BM009993.D
 Acq: 11 May 2017 20:18

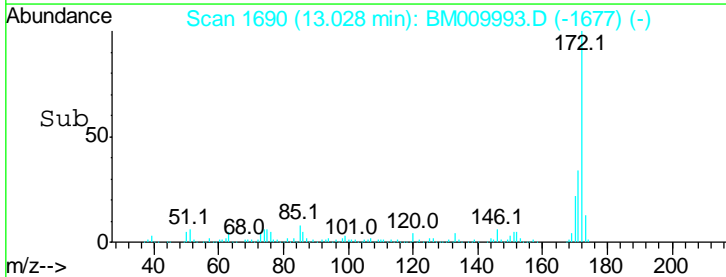
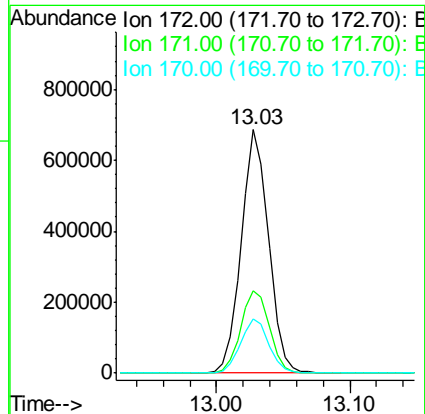
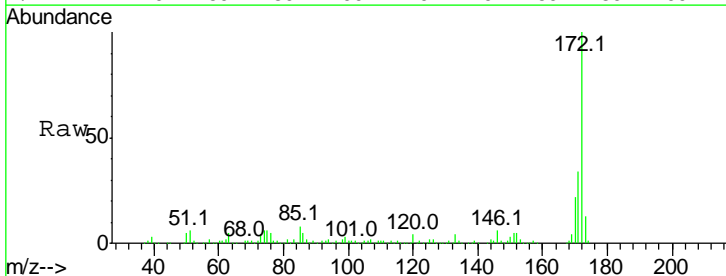
Instrument :
 BNA_M
 ClientSampled :
 PB98840BL

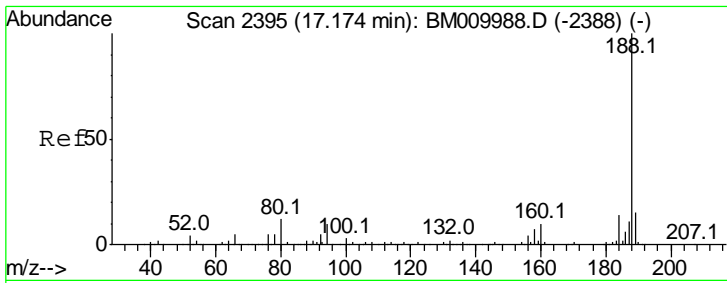
Tgt Ion	Resp	Lower	Upper
330	100		
332	98.4	0.0	0.0#
141	43.3	0.0	0.0#



#44
 2-Fluorobiphenyl
 Concen: 90.16 ng
 RT: 13.03 min Scan# 1690
 Delta R.T. -0.02 min
 Lab File: BM009993.D
 Acq: 11 May 2017 20:18

Tgt Ion	Resp	Lower	Upper
172	100		
171	33.8	28.5	42.7
170	22.5	18.8	28.2

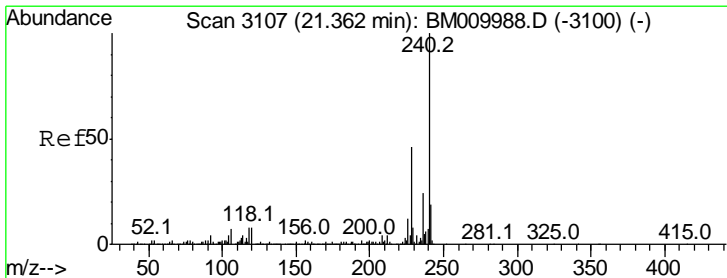
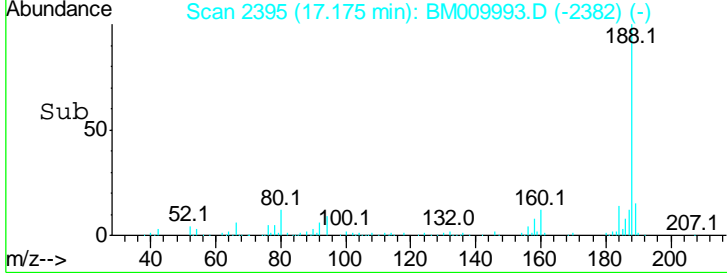
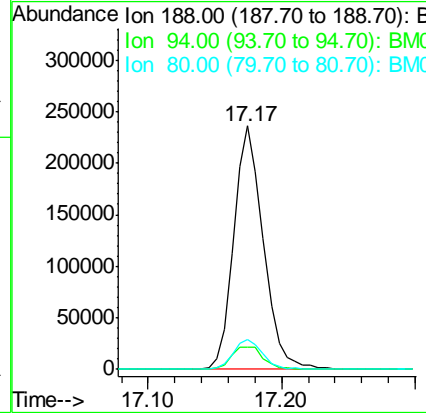
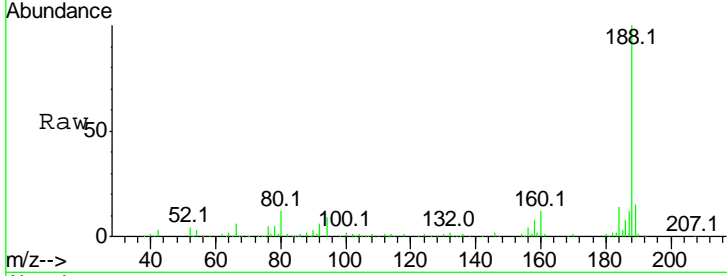




#63
 Phenanthrene-d10
 Concen: 20.00 ng
 RT: 17.17 min Scan# 2395
 Delta R.T. -0.02 min
 Lab File: BM009993.D
 Acq: 11 May 2017 20:18

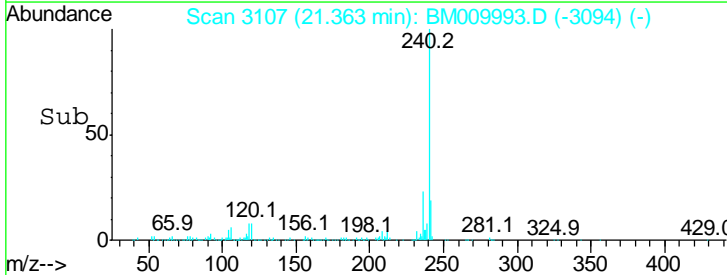
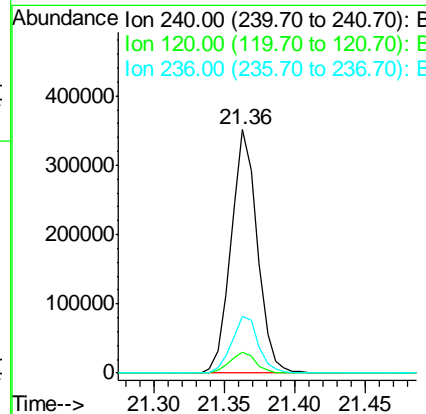
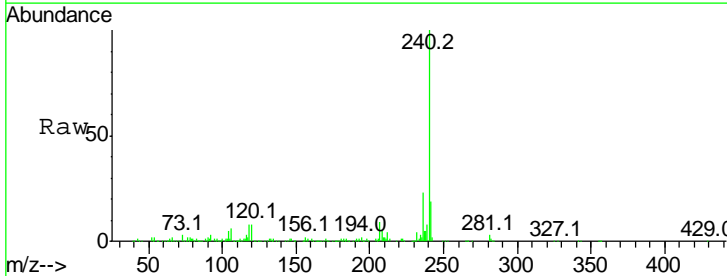
Instrument :
 BNA_M
 ClientSampled :
 PB98840BL

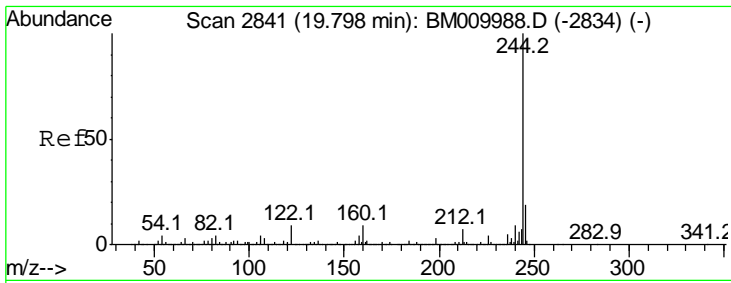
Tgt Ion	Resp	Lower	Upper
188	100		
94	9.2	8.7	13.1
80	12.4	9.3	13.9



#75
 Chrysene-d12
 Concen: 20.00 ng
 RT: 21.36 min Scan# 3107
 Delta R.T. -0.02 min
 Lab File: BM009993.D
 Acq: 11 May 2017 20:18

Tgt Ion	Resp	Lower	Upper
240	100		
120	8.4	8.2	12.2
236	23.2	20.0	30.0



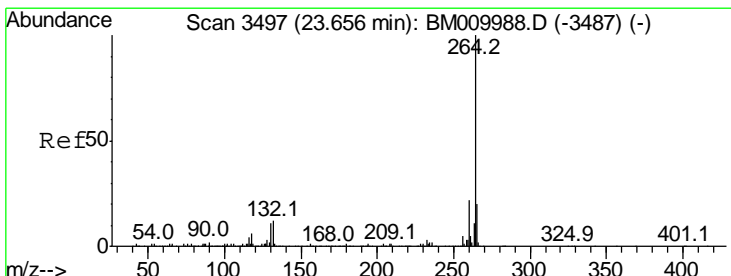
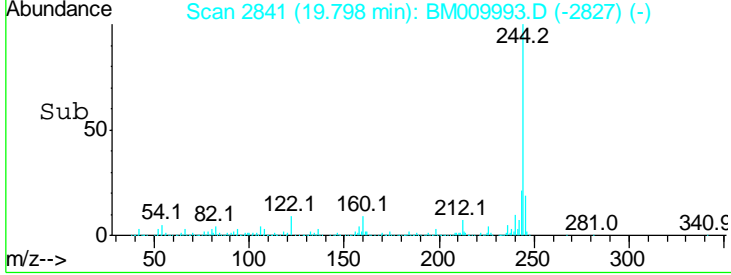
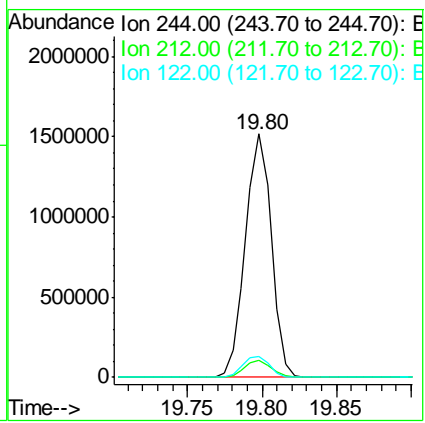
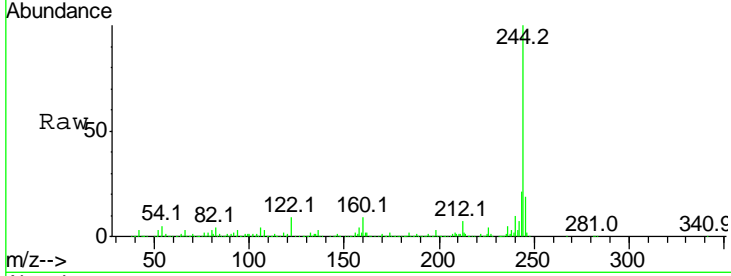


#78
 Terphenyl-d14
 Concen: 84.77 ng
 RT: 19.80 min Scan# 2841
 Delta R.T. -0.02 min
 Lab File: BM009993.D
 Acq: 11 May 2017 20:18

Instrument :
 BNA_M
ClientSampled :
 PB98840BL

Tgt Ion: 244 Resp: 1829364

Ion	Ratio	Lower	Upper
244	100		
212	7.2	4.9	7.3
122	8.7	6.2	9.4



#86
 Perylene-d12
 Concen: 20.00 ng
 RT: 23.66 min Scan# 3498
 Delta R.T. -0.03 min
 Lab File: BM009993.D
 Acq: 11 May 2017 20:18

Tgt Ion: 264 Resp: 344044

Ion	Ratio	Lower	Upper
264	100		
260	21.6	18.6	27.8
265	25.3	17.3	25.9

