

Data Path : Z:\HPCHEM1\BNA M\DATA\BM051117\  
 Data File : BM010006.D  
 Acq On : 12 May 2017 04:06  
 Operator : SJ/MA  
 Sample : I3079-03  
 Misc :  
 ALS Vial : 21 Sample Multiplier: 1

Instrument :  
 BNA\_M  
 ClientSampleId :  
 LF001MW001-170509

Quant Time: May 12 07:49:49 2017  
 Quant Method : Z:\HPCHEM1\BNA M\METHODS\8270-BM051117.M  
 Quant Title : ASP BNA STANDARDS FOR 5 POINT CALIBRATION  
 QLast Update : Thu May 11 19:50:16 2017  
 Response via : Initial Calibration

Internal Standards	R.T.	QIon	Response	Conc	Units	Dev(Min)
1) 1,4-Dichlorobenzene-d4	7.76	152	57815	20.00	ng	-0.02
21) Naphthalene-d8	10.56	136	222667	20.00	ng	-0.02
38) Acenaphthene-d10	14.42	164	136109	20.00	ng	-0.02
63) Phenanthrene-d10	17.17	188	285979	20.00	ng	-0.03
75) Chrysene-d12	21.36	240	334840	20.00	ng	-0.03
86) Perylene-d12	23.65	264	297095	20.00	ng	-0.04

## System Monitoring Compounds

5) 2-Fluorophenol	5.36	112	241110	65.26	ng	-0.01
7) Phenol-d6	6.95	99	226375	38.24	ng	-0.02
23) Nitrobenzene-d5	8.93	82	562300	92.29	ng	-0.02
41) 2,4,6-Tribromophenol	15.92	330	230548	123.77	ng	-0.02
44) 2-Fluorobiphenyl	13.03	172	919929	90.39	ng	-0.02
78) Terphenyl-d14	19.79	244	1118979	70.43	ng	-0.02

## Target Compounds

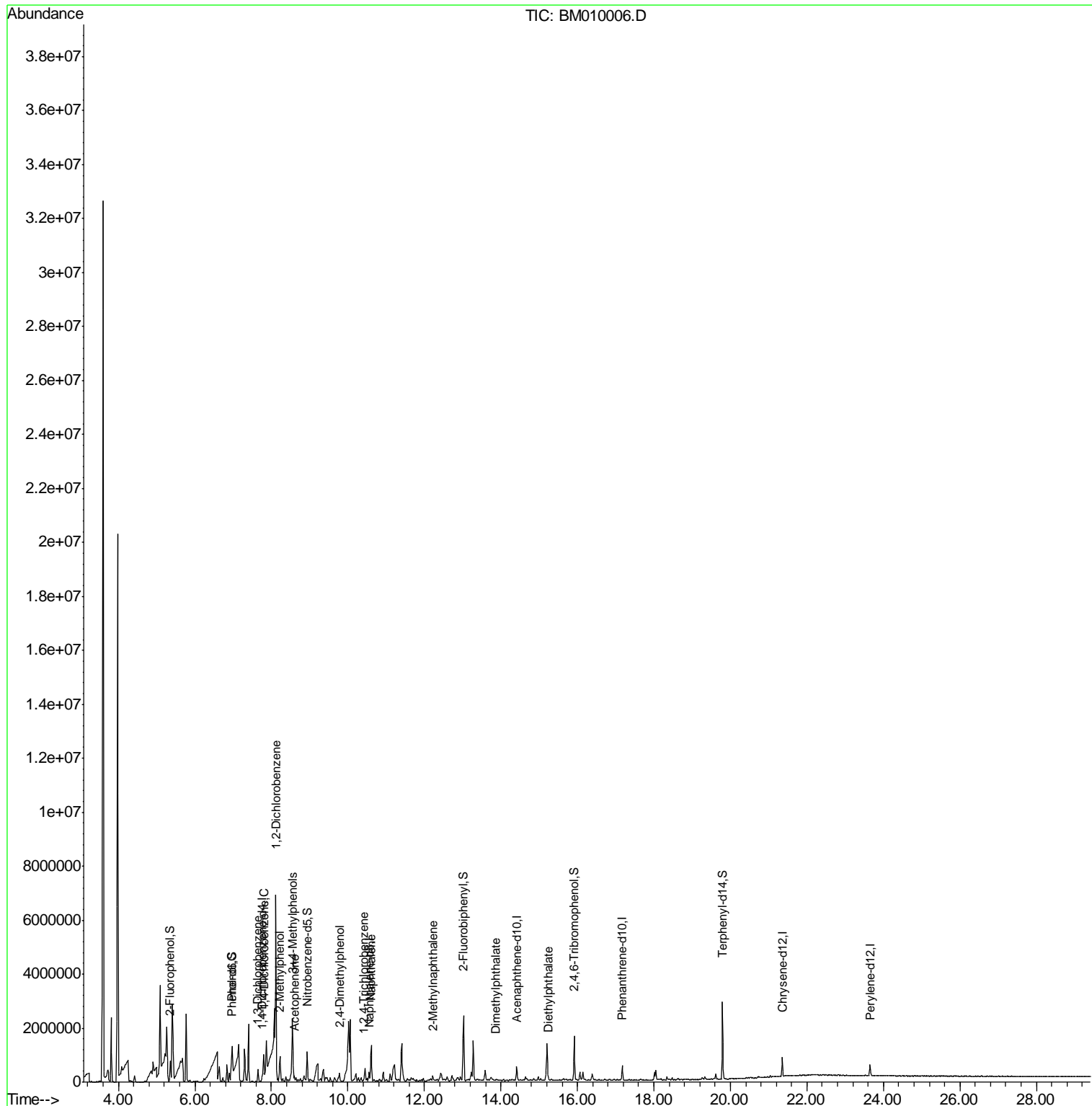
Target Compounds	R.T.	QIon	Response	Conc	Units	Qvalue
10) Phenol	6.98	94	143049	22.24	ng	88
12) 1,3-Dichlorobenzene	7.65	146	103215	23.05	ng	# 83
13) 1,4-Dichlorobenzene	7.80	146	280862	61.22	ng	# 92
14) 1,2-Dichlorobenzene	8.12	146	2016449	453.31	ng	# 92
17) 2-Methylphenol	8.22	107	140070	33.36	ng	# 84
20) 3+4-Methylphenols	8.55	107	705545	123.42	ng	88
22) Acetophenone	8.60	105	85726	12.59	ng	# 90
27) 2,4-Dimethylphenol	9.77	122	109900	30.07	ng	# 82
30) 1,2,4-Trichlorobenzene	10.42	180	10949	2.64	ng	# 73
31) Naphthalene	10.61	128	888587	72.49	ng	100
37) 2-Methylnaphthalene	12.22	142	78706	8.97	ng	# 90
49) Dimethylphthalate	13.88	163	26924	2.24	ng	# 96
59) Diethylphthalate	15.24	149	37342	2.96	ng	98

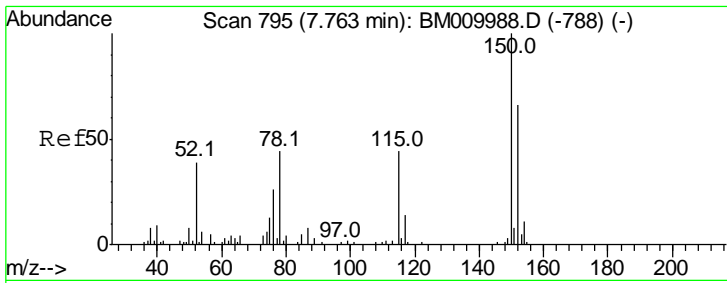
(#) = qualifier out of range (m) = manual integration (+) = signals summed

Data Path : Z:\HPCHEM1\BNA M\DATA\BM051117\  
 Data File : BM010006.D  
 Acq On : 12 May 2017 04:06  
 Operator : SJ/MA  
 Sample : I3079-03  
 Misc :  
 ALS Vial : 21 Sample Multiplier: 1

**Instrument :**  
 BNA\_M  
**ClientSampleId :**  
 LF001MW001-170509

Quant Time: May 12 07:49:49 2017  
 Quant Method : Z:\HPCHEM1\BNA M\METHODS\8270-BM051117.M  
 Quant Title : ASP BNA STANDARDS FOR 5 POINT CALIBRATION  
 QLast Update : Thu May 11 19:50:16 2017  
 Response via : Initial Calibration

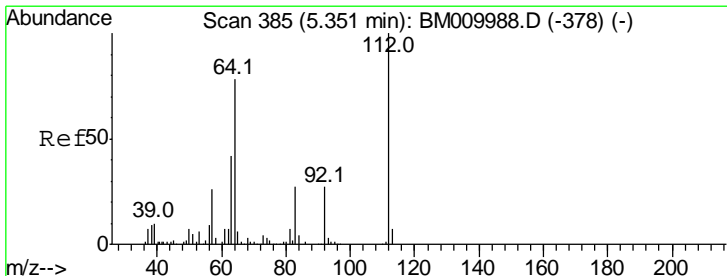
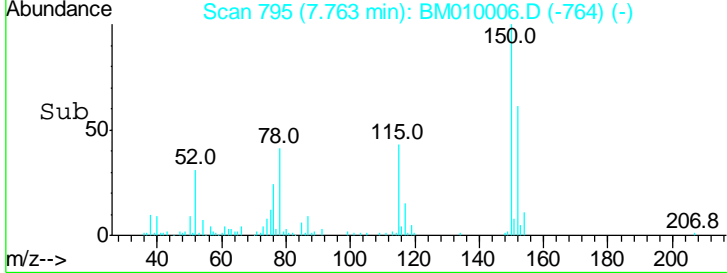
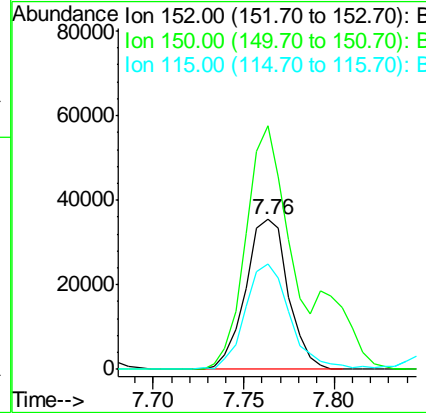
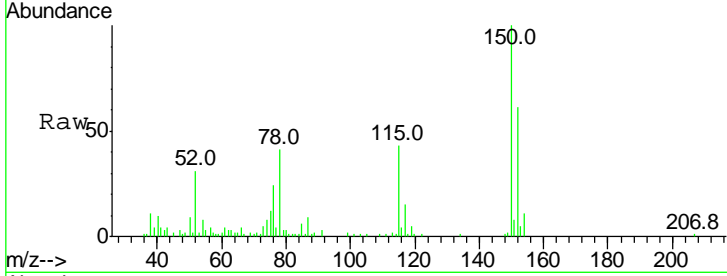




#1  
 1,4-Dichlorobenzene-d4  
 Concen: 20.00 ng  
 RT: 7.76 min Scan# 795  
 Delta R.T. -0.02 min  
 Lab File: BM010006.D  
 Acq: 12 May 2017 04:06

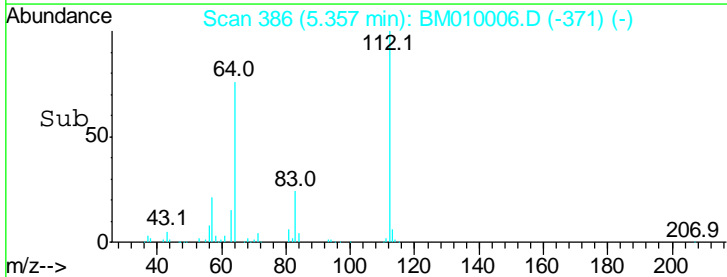
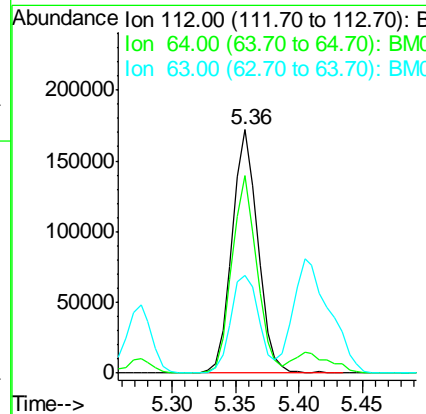
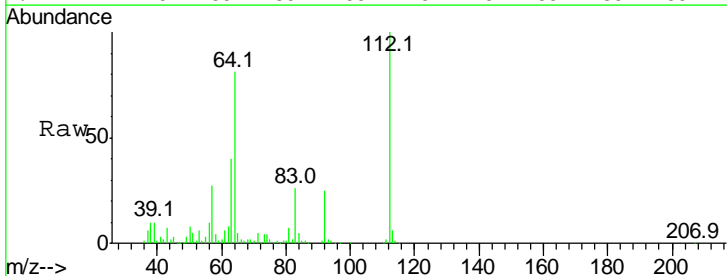
**Instrument :**  
 BNA\_M  
**ClientSampleId :**  
 LF001MW001-170509

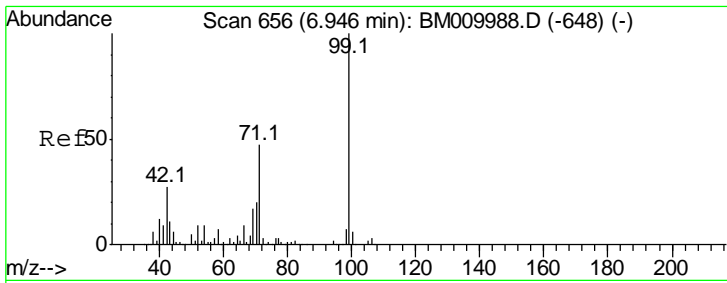
Tgt Ion	Resp	Lower	Upper
152	100		
150	162.6	119.5	179.3
115	70.1	43.0	64.4#



#5  
 2-Fluorophenol  
 Concen: 65.26 ng  
 RT: 5.36 min Scan# 386  
 Delta R.T. -0.01 min  
 Lab File: BM010006.D  
 Acq: 12 May 2017 04:06

Tgt Ion	Resp	Lower	Upper
112	100		
64	81.0	38.6	57.8#
63	40.2	19.3	28.9#

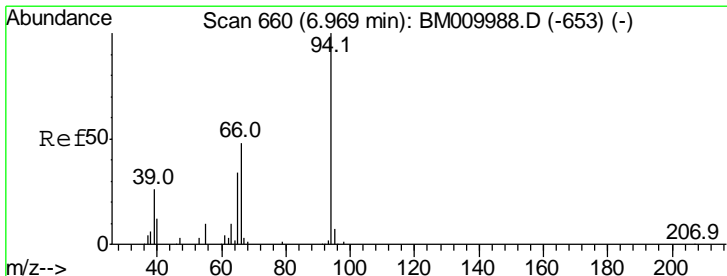
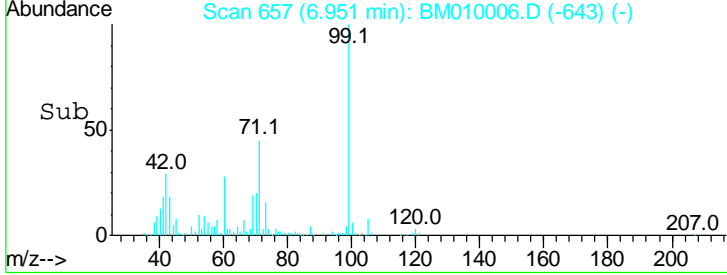
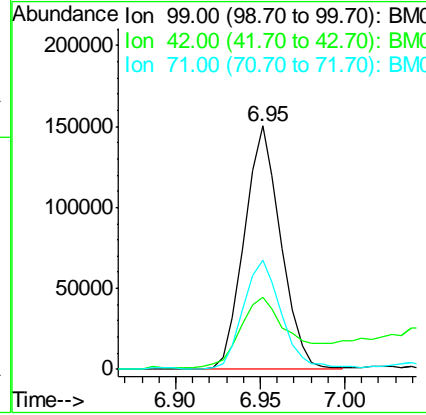
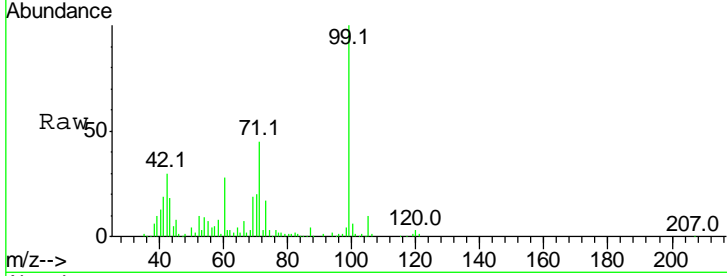




#7  
 Phenol-d6  
 Concen: 38.24 ng  
 RT: 6.95 min Scan# 657  
 Delta R.T. -0.02 min  
 Lab File: BM010006.D  
 Acq: 12 May 2017 04:06

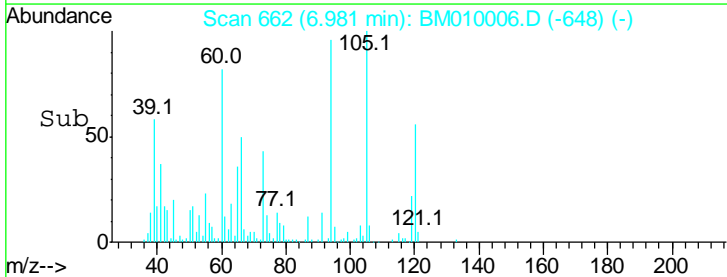
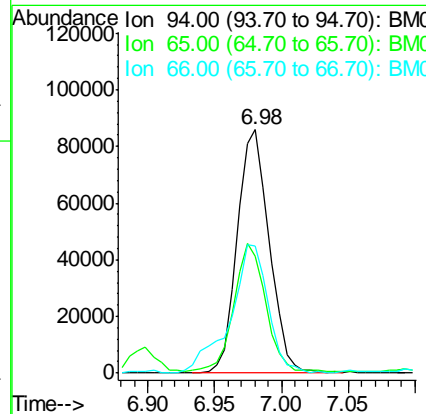
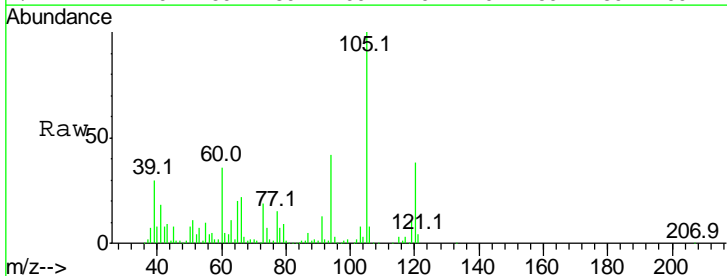
**Instrument :**  
 BNA\_M  
**ClientSampleId :**  
 LF001MW001-170509

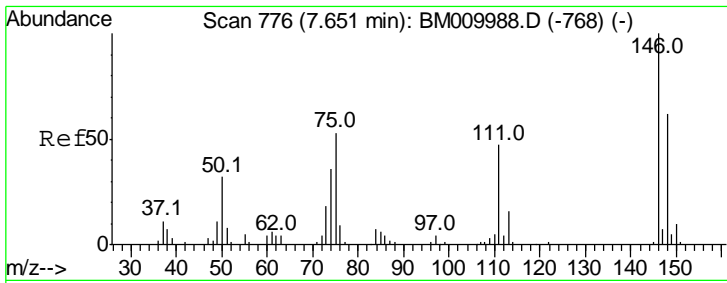
Tgt Ion	Resp	Lower	Upper
99	100		
42	29.8	11.0	16.4#
71	44.7	23.4	35.2#



#10  
 Phenol  
 Concen: 22.24 ng  
 RT: 6.98 min Scan# 662  
 Delta R.T. -0.02 min  
 Lab File: BM010006.D  
 Acq: 12 May 2017 04:06

Tgt Ion	Resp	Lower	Upper
94	100		
65	47.9	18.8	58.8
66	52.2	39.9	79.9

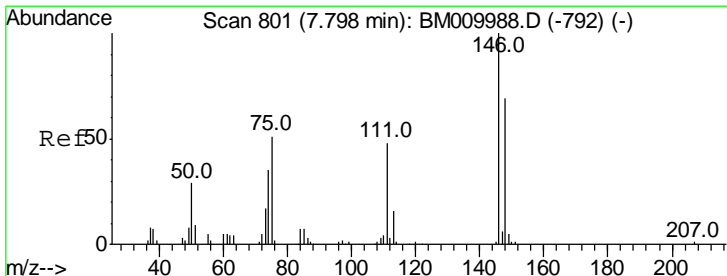
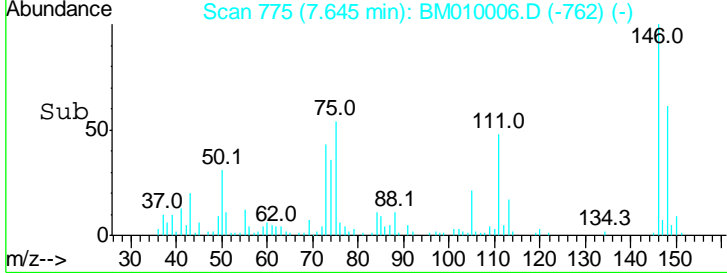
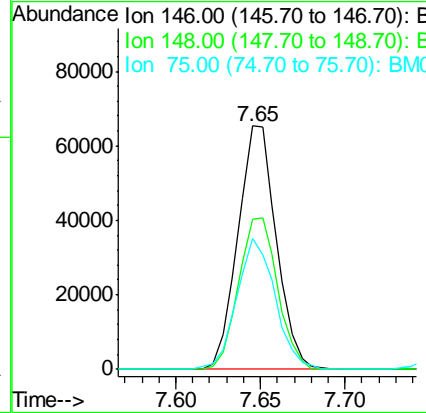
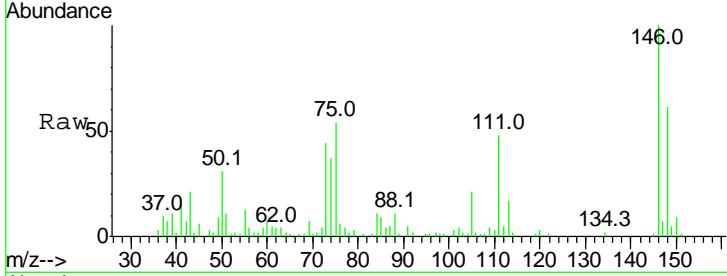




#12  
 1,3-Dichlorobenzene  
 Concen: 23.05 ng  
 RT: 7.65 min Scan# 775  
 Delta R.T. -0.02 min  
 Lab File: BM010006.D  
 Acq: 12 May 2017 04:06

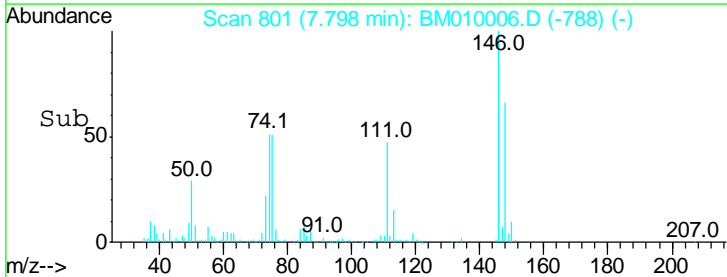
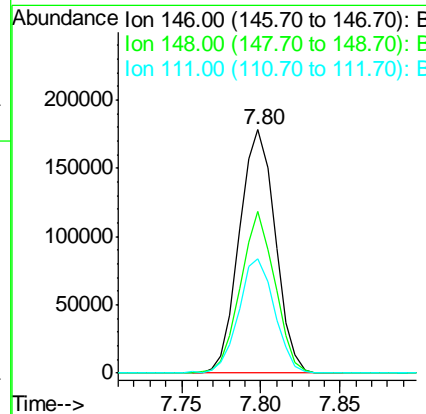
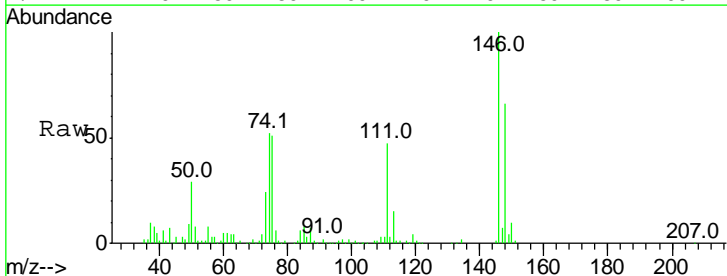
**Instrument :**  
 BNA\_M  
**ClientSampleId :**  
 LF001MW001-170509

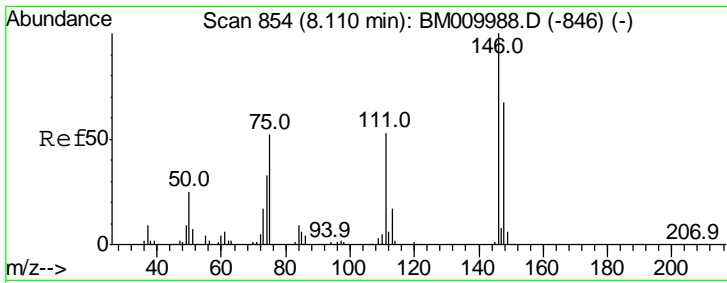
Tgt Ion	Resp	Lower	Upper
146	103215		
148	61.4	50.9	76.3
75	53.7	21.4	32.2#



#13  
 1,4-Dichlorobenzene  
 Concen: 61.22 ng  
 RT: 7.80 min Scan# 801  
 Delta R.T. -0.02 min  
 Lab File: BM010006.D  
 Acq: 12 May 2017 04:06

Tgt Ion	Resp	Lower	Upper
146	280862		
148	66.4	51.9	77.9
111	47.2	29.2	43.8#



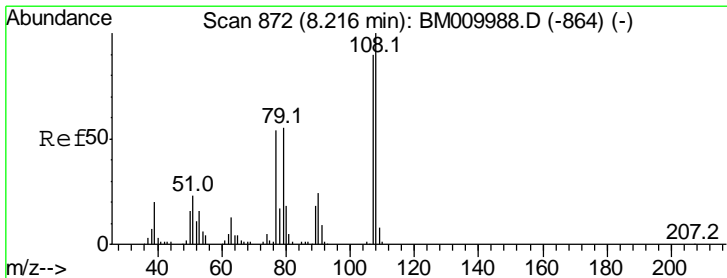
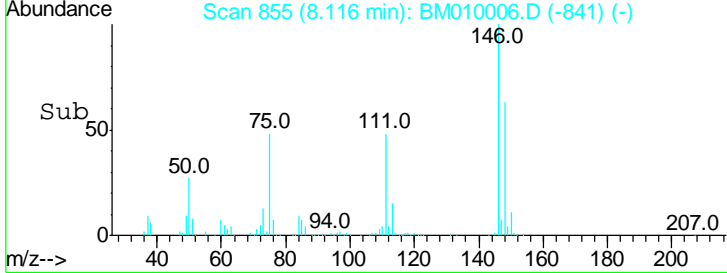
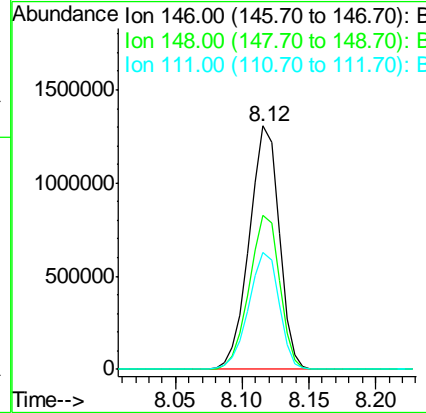
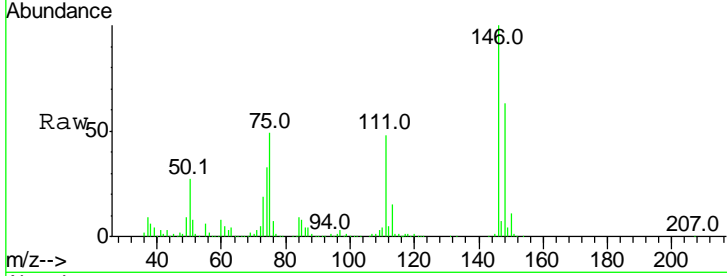


#14  
 1,2-Dichlorobenzene  
 Concen: 453.31 ng  
 RT: 8.12 min Scan# 855  
 Delta R.T. -0.02 min  
 Lab File: BM010006.D  
 Acq: 12 May 2017 04:06

**Instrument :**  
 BNA\_M  
**ClientSampled :**  
 LF001MW001-170509

Tgt Ion:146 Resp: 2016449

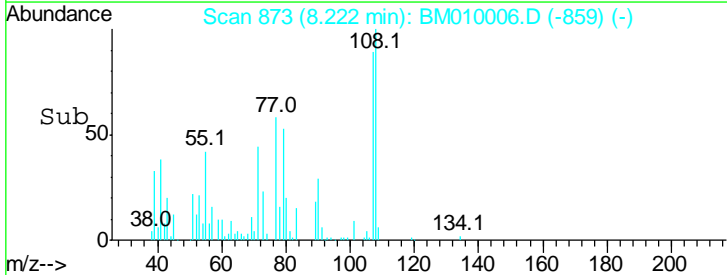
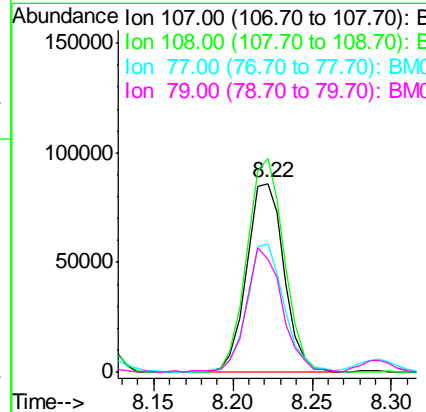
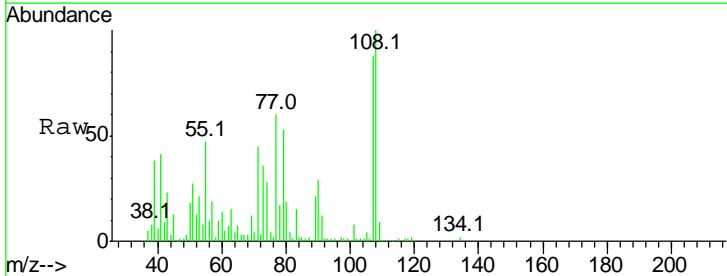
Ion	Ratio	Lower	Upper
146	100		
148	63.0	52.3	78.5
111	48.2	30.6	45.8#

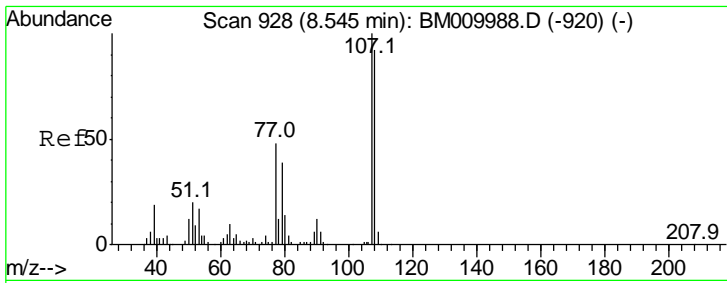


#17  
 2-Methylphenol  
 Concen: 33.36 ng  
 RT: 8.22 min Scan# 873  
 Delta R.T. -0.02 min  
 Lab File: BM010006.D  
 Acq: 12 May 2017 04:06

Tgt Ion:107 Resp: 140070

Ion	Ratio	Lower	Upper
107	100		
108	113.3	89.8	134.8
77	67.8	32.6	48.8#
79	59.8	32.8	49.2#

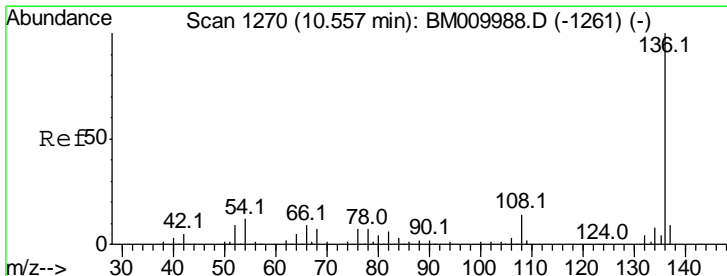
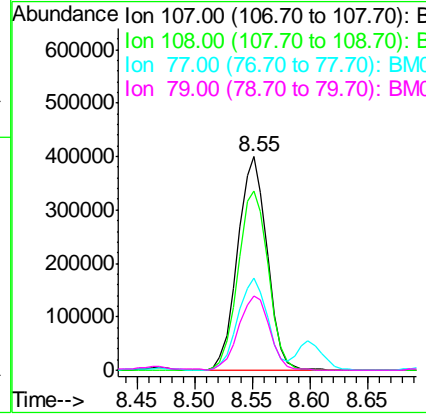
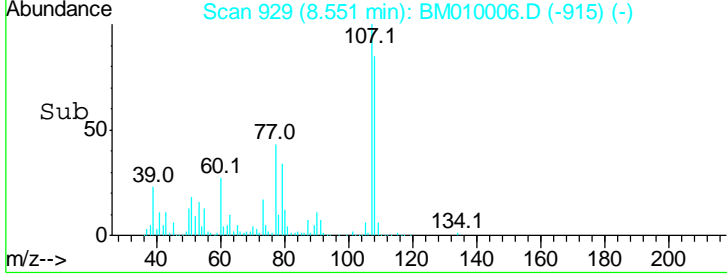
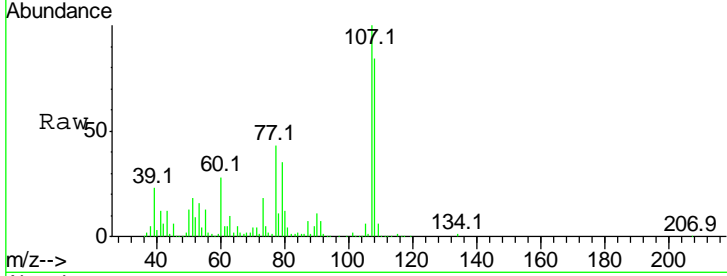




#20  
 3+4-Methylphenols  
 Concen: 123.42 ng  
 RT: 8.55 min Scan# 929  
 Delta R.T. -0.02 min  
 Lab File: BM010006.D  
 Acq: 12 May 2017 04:06

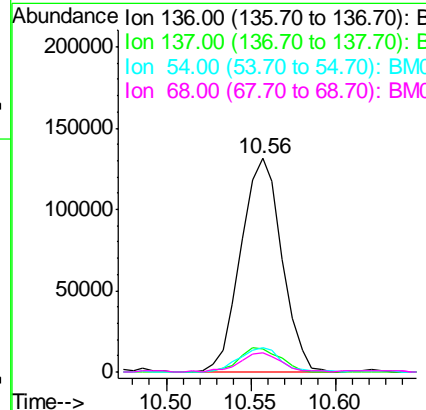
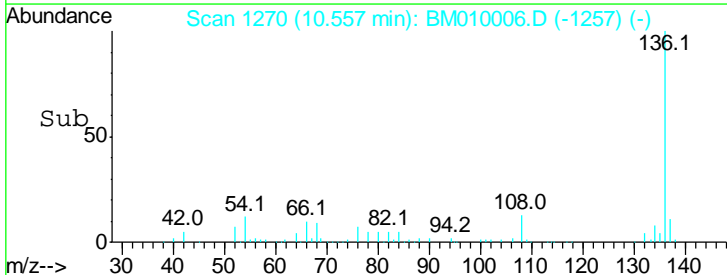
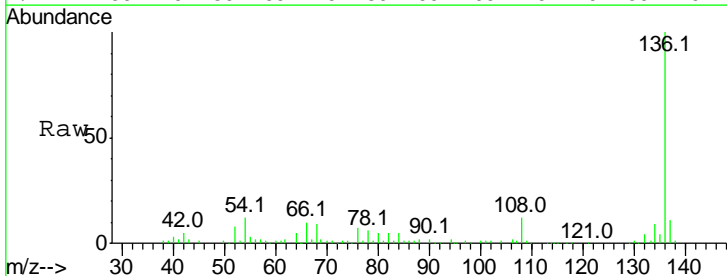
Instrument :  
 BNA\_M  
 ClientSampleId :  
 LF001MW001-170509

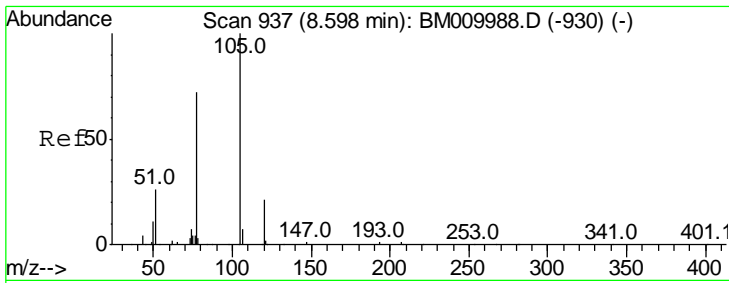
Tgt Ion	Resp	Lower	Upper
107	100		
108	84.2	73.2	113.2
77	43.1	10.7	50.7
79	34.9	9.6	49.6



#21  
 Naphthalene-d8  
 Concen: 20.00 ng  
 RT: 10.56 min Scan# 1270  
 Delta R.T. -0.02 min  
 Lab File: BM010006.D  
 Acq: 12 May 2017 04:06

Tgt Ion	Resp	Lower	Upper
136	100		
137	10.8	8.7	13.1
54	11.5	4.6	6.8#
68	9.0	3.7	5.5#

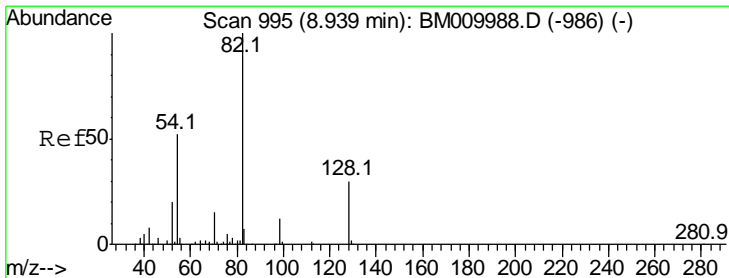
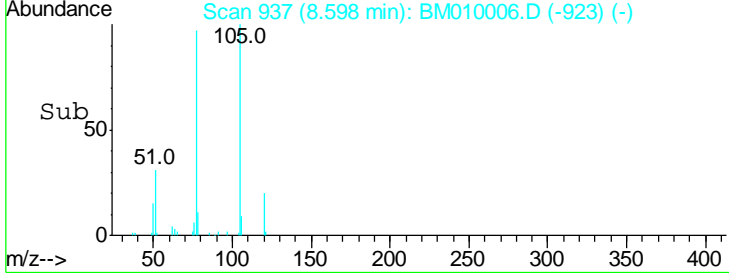
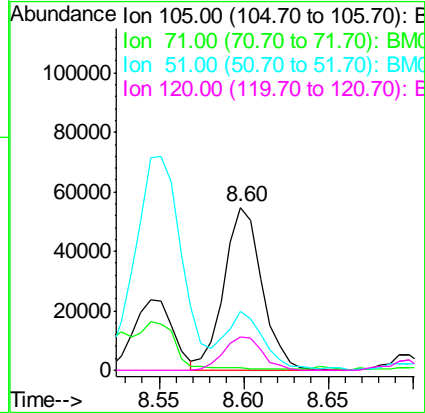
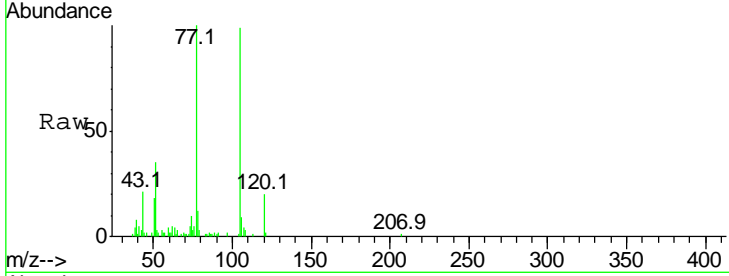




#22  
 Acetophenone  
 Concen: 12.59 ng  
 RT: 8.60 min Scan# 937  
 Delta R.T. -0.02 min  
 Lab File: BM010006.D  
 Acq: 12 May 2017 04:06

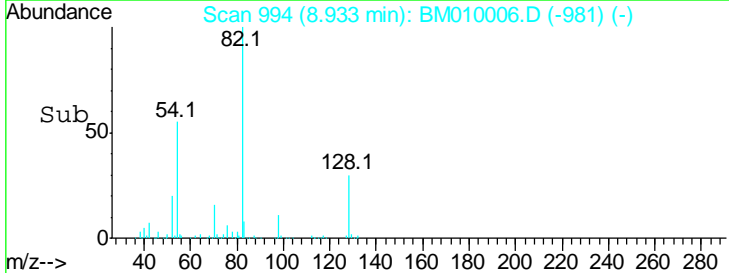
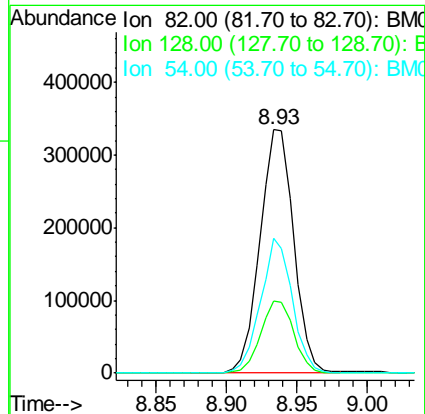
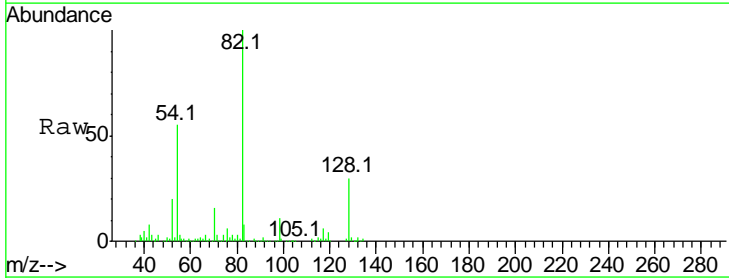
Instrument :  
 BNA\_M  
 ClientSampleId :  
 LF001MW001-170509

Tgt Ion	Resp	Lower	Upper
105	100		
71	1.3	0.6	1.0#
51	35.9	21.6	32.4#
120	20.3	16.1	24.1

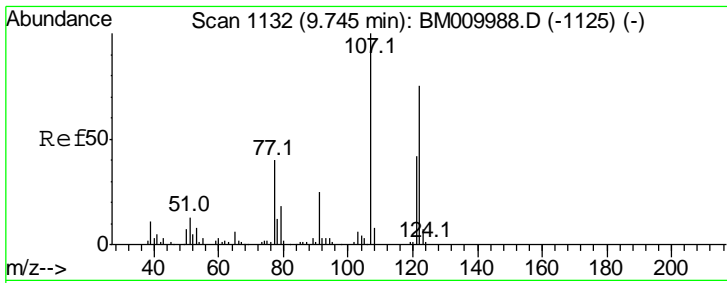


#23  
 Nitrobenzene-d5  
 Concen: 92.29 ng  
 RT: 8.93 min Scan# 994  
 Delta R.T. -0.02 min  
 Lab File: BM010006.D  
 Acq: 12 May 2017 04:06

Tgt Ion	Resp	Lower	Upper
82	100		
128	29.5	32.8	49.2#
54	55.2	40.6	60.8



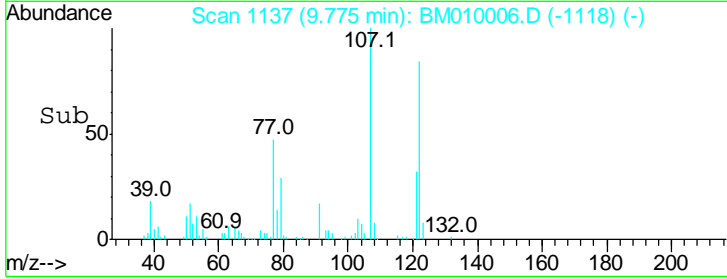
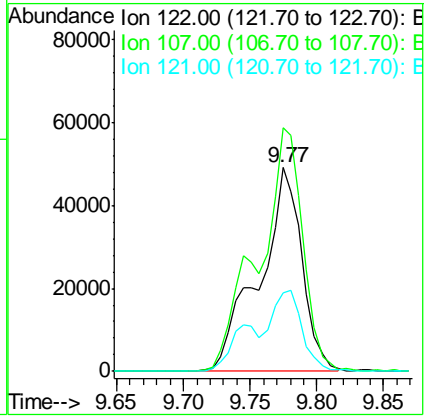
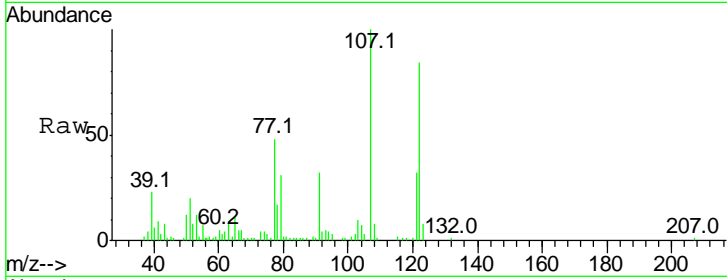




#27  
 2,4-Dimethylphenol  
 Concen: 30.07 ng  
 RT: 9.77 min Scan# 1137  
 Delta R.T. 0.01 min  
 Lab File: BM010006.D  
 Acq: 12 May 2017 04:06

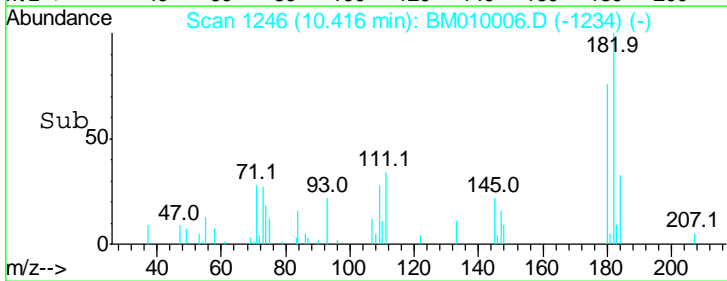
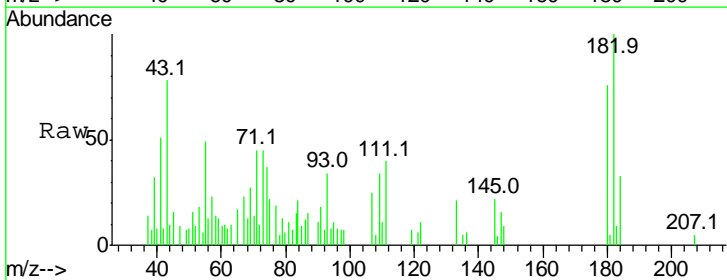
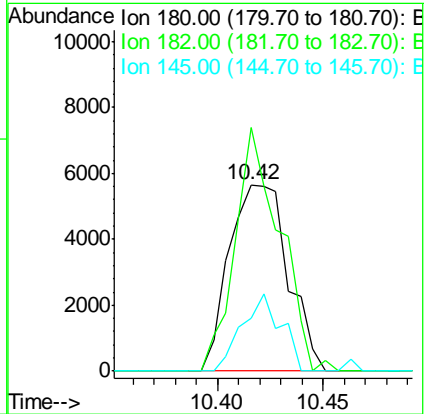
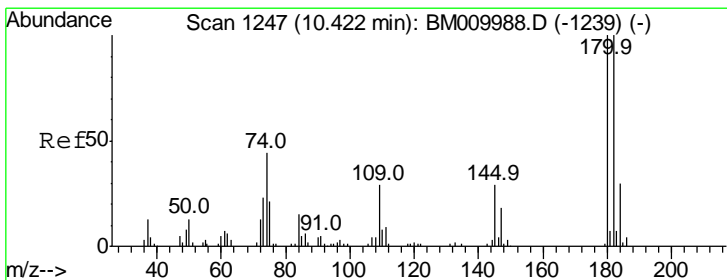
**Instrument :**  
 BNA\_M  
**ClientSampled :**  
 LF001MW001-170509

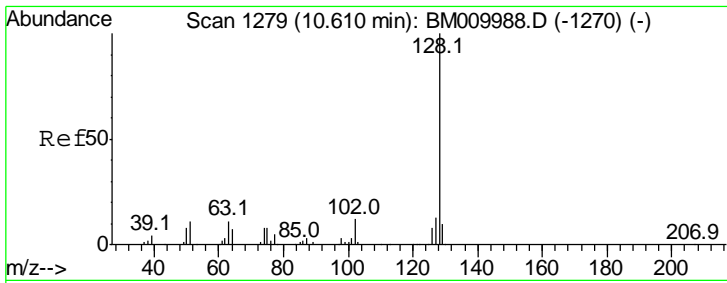
Tgt Ion	Resp	Lower	Upper
122	109900		
107	119.7	84.7	127.1
121	38.7	46.6	69.8#



#30  
 1,2,4-Trichlorobenzene  
 Concen: 2.64 ng  
 RT: 10.42 min Scan# 1246  
 Delta R.T. -0.03 min  
 Lab File: BM010006.D  
 Acq: 12 May 2017 04:06

Tgt Ion	Resp	Lower	Upper
180	10949		
182	130.9	77.6	116.4#
145	28.6	23.4	35.2

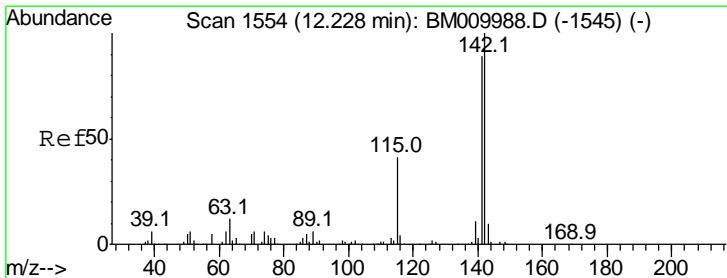
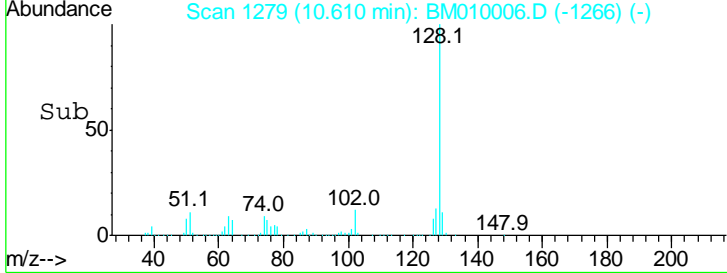
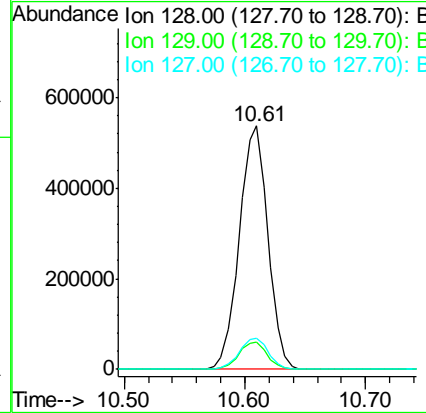
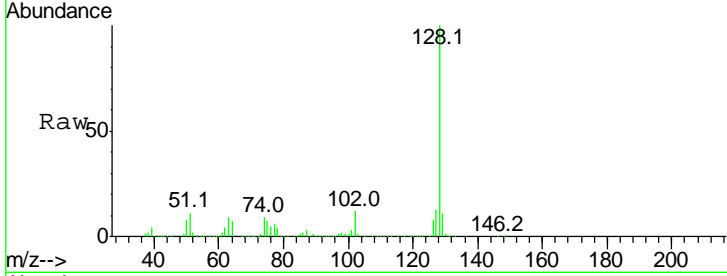




#31  
 Naphthalene  
 Concen: 72.49 ng  
 RT: 10.61 min Scan# 1279  
 Delta R.T. -0.02 min  
 Lab File: BM010006.D  
 Acq: 12 May 2017 04:06

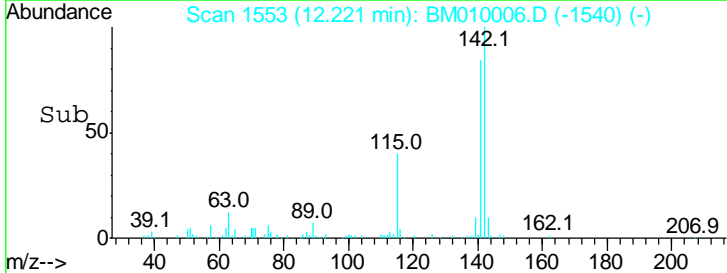
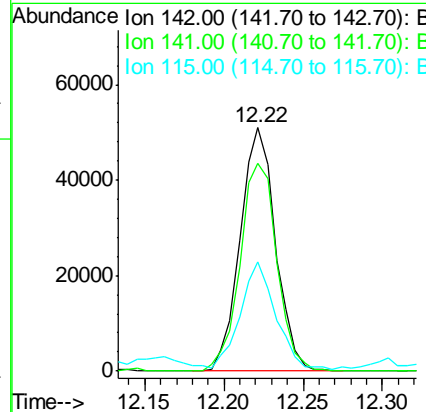
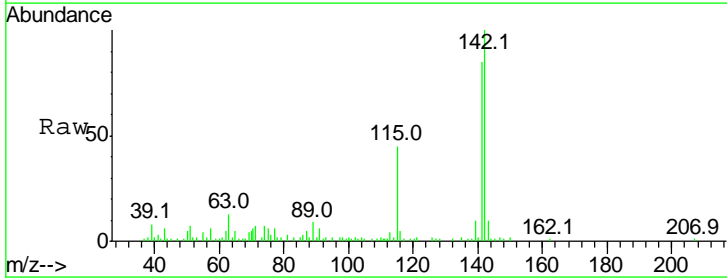
Instrument :  
 BNA\_M  
 ClientSampleId :  
 LF001MW001-170509

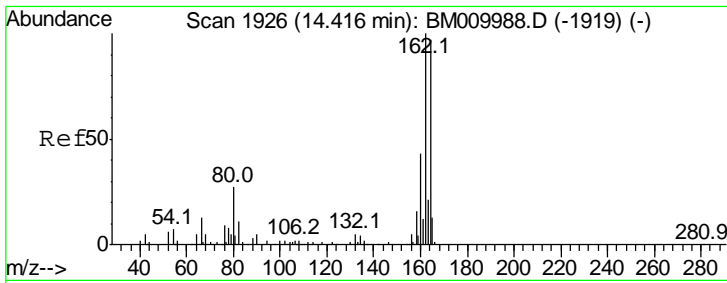
Tgt Ion	Resp	Lower	Upper
128	100		
129	11.0	8.9	13.3
127	12.9	10.4	15.6



#37  
 2-Methylnaphthalene  
 Concen: 8.97 ng  
 RT: 12.22 min Scan# 1553  
 Delta R.T. -0.02 min  
 Lab File: BM010006.D  
 Acq: 12 May 2017 04:06

Tgt Ion	Resp	Lower	Upper
142	100		
141	85.3	71.9	107.9
115	44.7	25.4	38.0

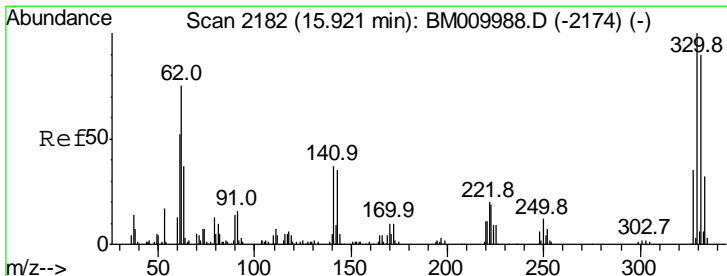
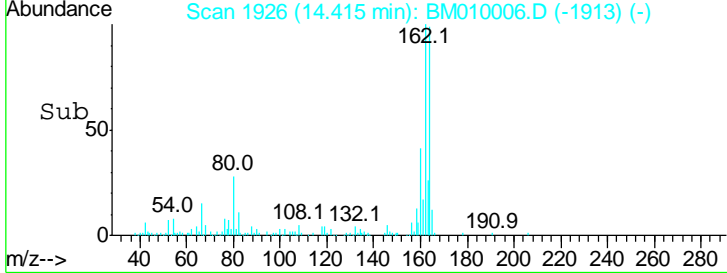
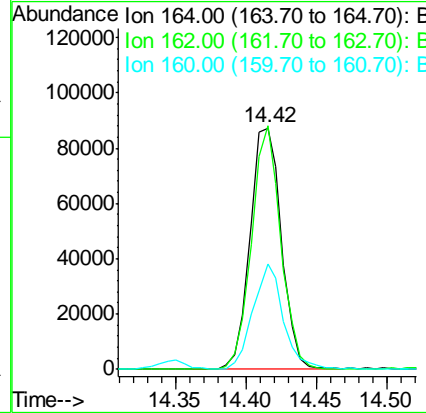
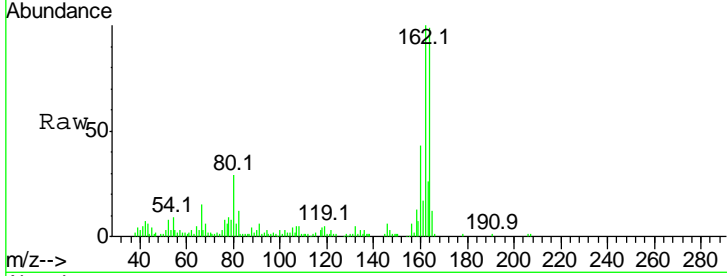




#38  
 Acenaphthene-d10  
 Concen: 20.00 ng  
 RT: 14.42 min Scan# 1926  
 Delta R.T. -0.02 min  
 Lab File: BM010006.D  
 Acq: 12 May 2017 04:06

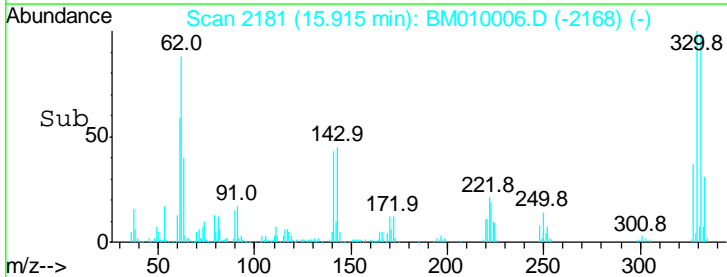
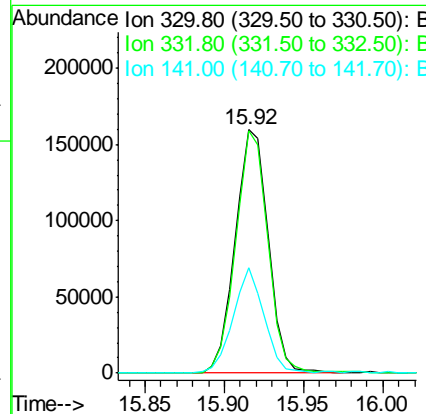
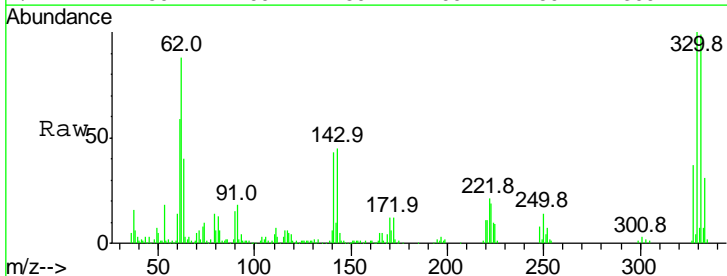
Instrument :  
 BNA\_M  
 ClientSampleId :  
 LF001MW001-170509

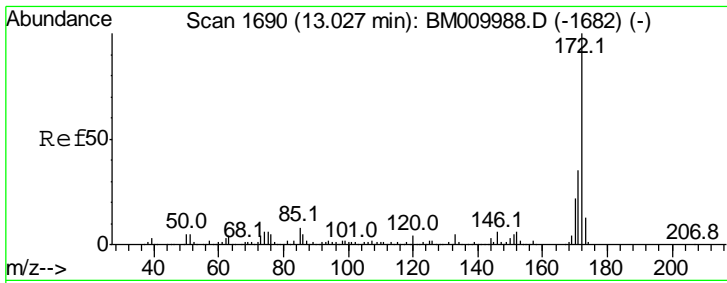
Tgt Ion	Resp	Lower	Upper
164	100		
162	100.8	82.4	123.6
160	43.8	35.8	53.6



#41  
 2,4,6-Tribromophenol  
 Concen: 123.77 ng  
 RT: 15.92 min Scan# 2181  
 Delta R.T. -0.02 min  
 Lab File: BM010006.D  
 Acq: 12 May 2017 04:06

Tgt Ion	Resp	Lower	Upper
330	100		
332	96.8	0.0	0.0#
141	40.4	0.0	0.0#

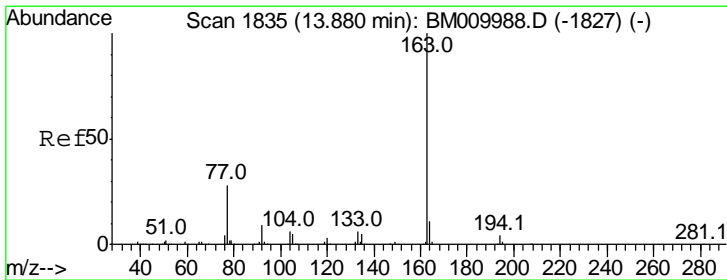
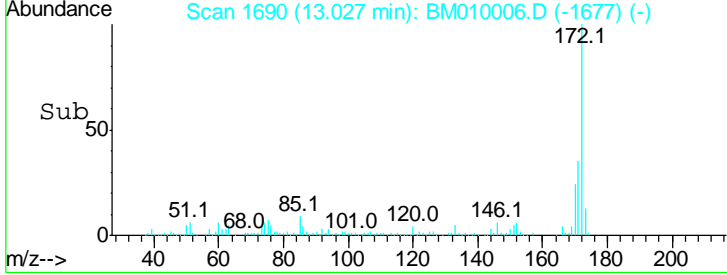
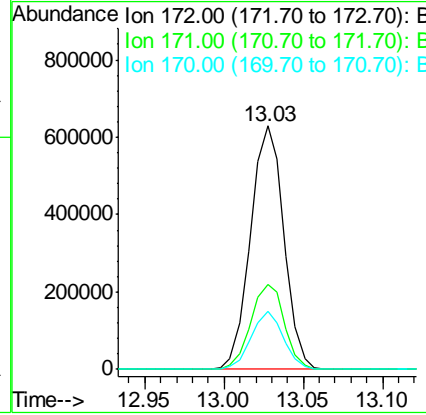
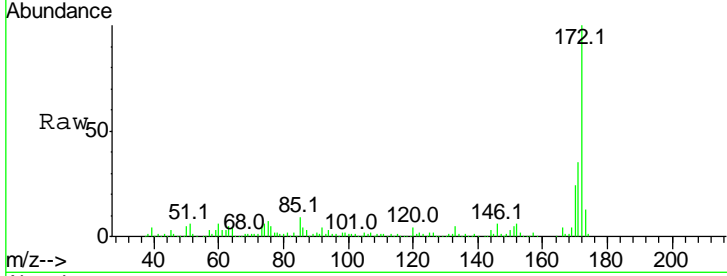




#44  
 2-Fluorobiphenyl  
 Concen: 90.39 ng  
 RT: 13.03 min Scan# 1690  
 Delta R.T. -0.02 min  
 Lab File: BM010006.D  
 Acq: 12 May 2017 04:06

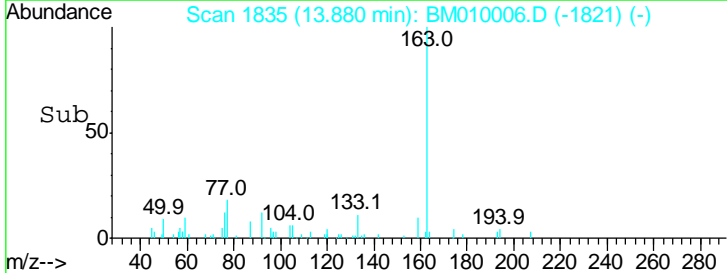
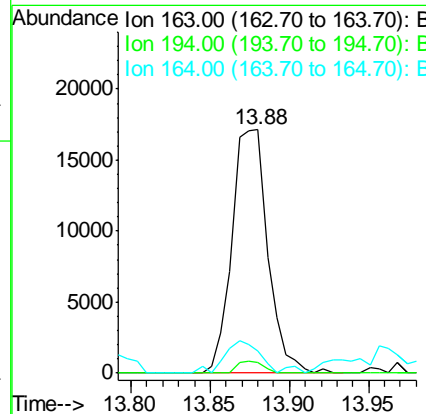
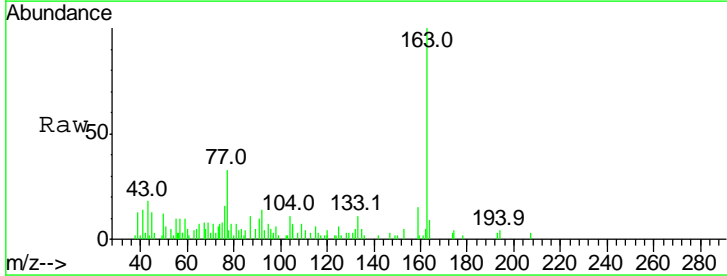
Instrument :  
 BNA\_M  
 ClientSampleId :  
 LF001MW001-170509

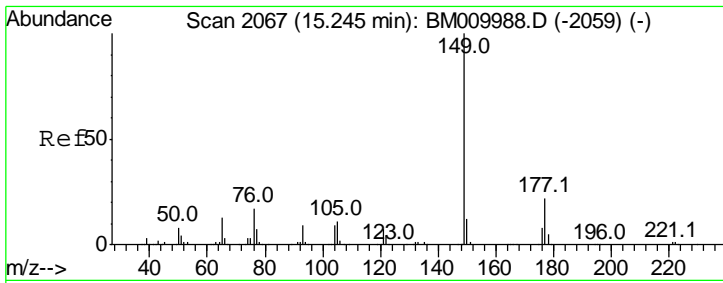
Tgt Ion	Resp	Lower	Upper
172	100		
171	35.1	28.5	42.7
170	23.6	18.8	28.2



#49  
 Dimethylphthalate  
 Concen: 2.24 ng  
 RT: 13.88 min Scan# 1835  
 Delta R.T. -0.02 min  
 Lab File: BM010006.D  
 Acq: 12 May 2017 04:06

Tgt Ion	Resp	Lower	Upper
163	100		
194	4.5	2.7	4.1#
164	8.8	8.2	12.2

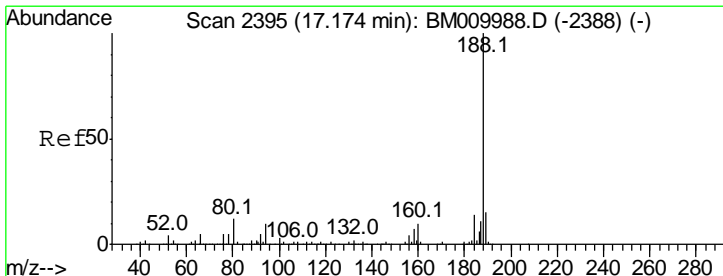
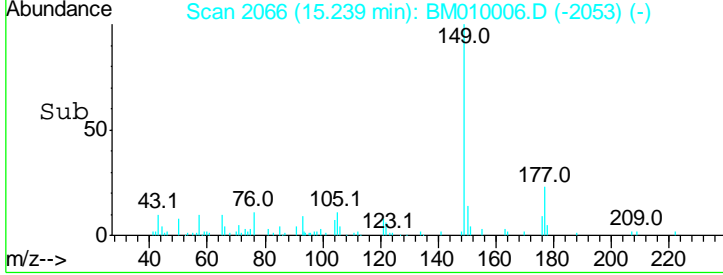
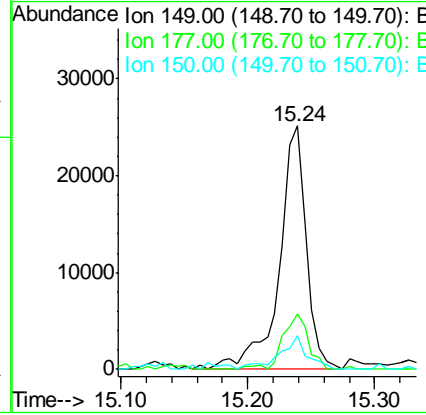
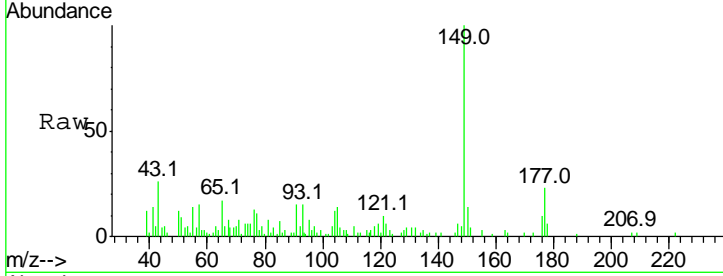




#59  
 Diethylphthalate  
 Concen: 2.96 ng  
 RT: 15.24 min Scan# 2066  
 Delta R.T. -0.02 min  
 Lab File: BM010006.D  
 Acq: 12 May 2017 04:06

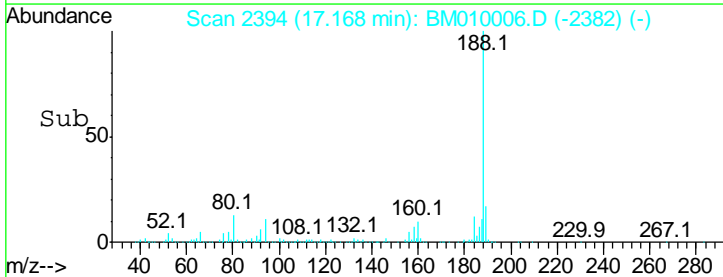
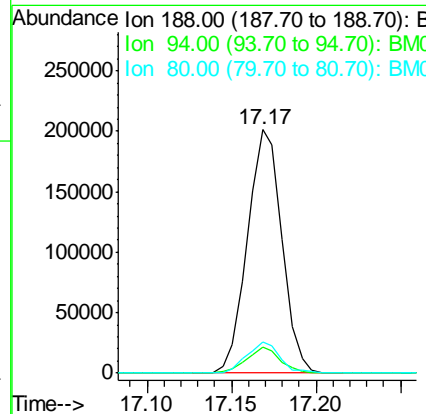
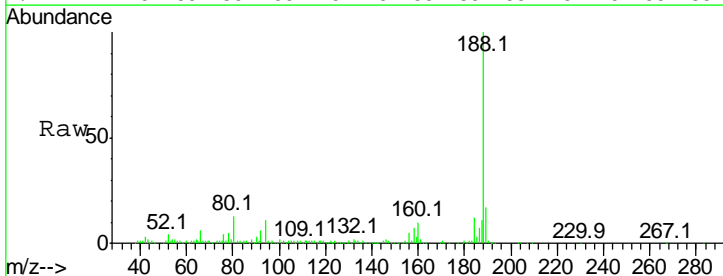
Instrument :  
 BNA\_M  
 ClientSampleId :  
 LF001MW001-170509

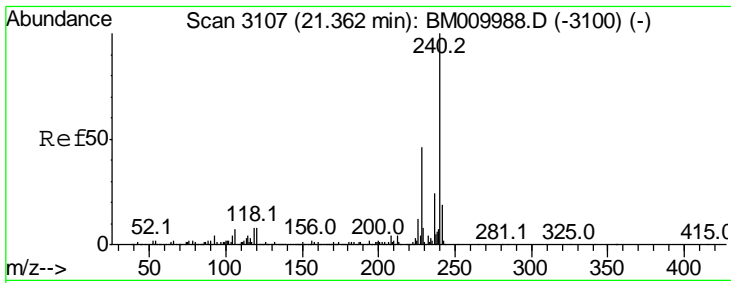
Tgt Ion	Resp	Lower	Upper
149	100		
177	23.0	18.3	27.5
150	13.9	9.8	14.8



#63  
 Phenanthrene-d10  
 Concen: 20.00 ng  
 RT: 17.17 min Scan# 2394  
 Delta R.T. -0.03 min  
 Lab File: BM010006.D  
 Acq: 12 May 2017 04:06

Tgt Ion	Resp	Lower	Upper
188	100		
94	10.9	8.7	13.1
80	12.9	9.3	13.9

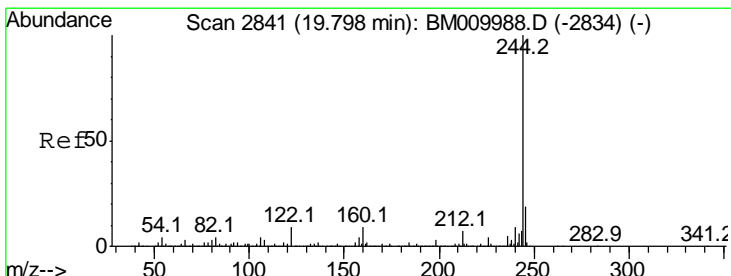
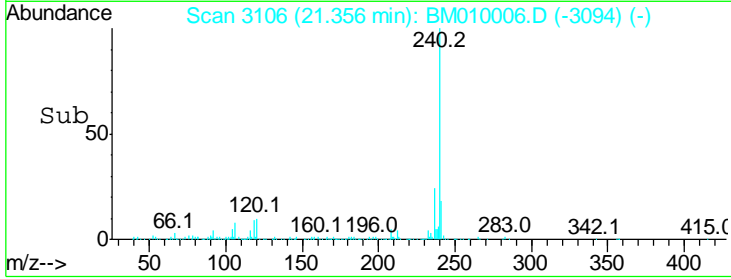
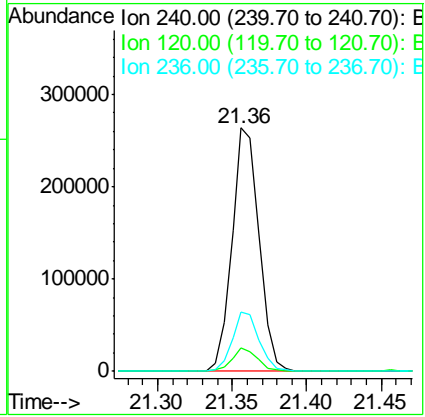
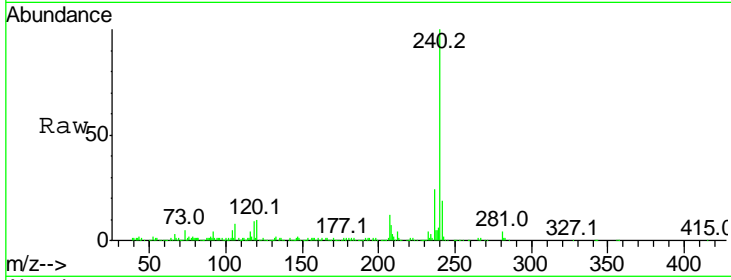




#75  
 Chrysene-d12  
 Concen: 20.00 ng  
 RT: 21.36 min Scan# 3106  
 Delta R.T. -0.03 min  
 Lab File: BM010006.D  
 Acq: 12 May 2017 04:06

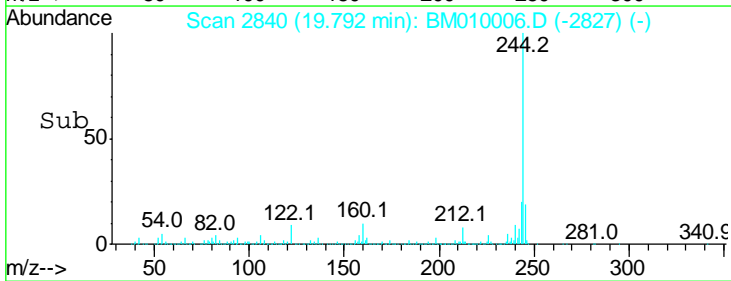
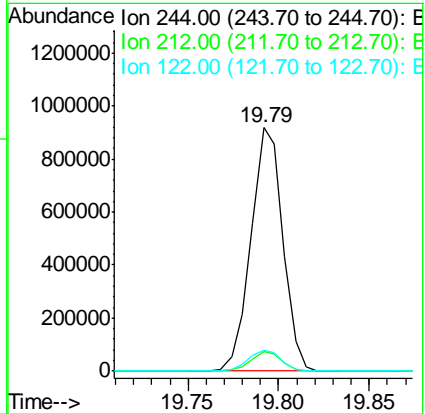
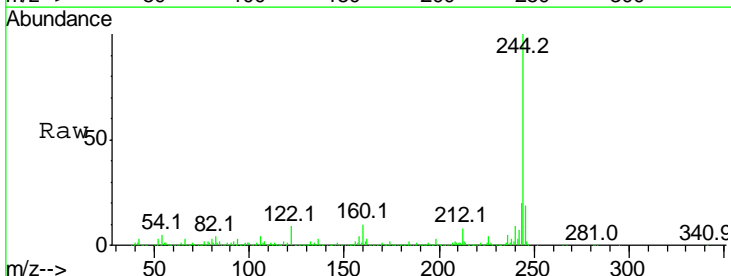
Instrument :  
 BNA\_M  
 ClientSampleId :  
 LF001MW001-170509

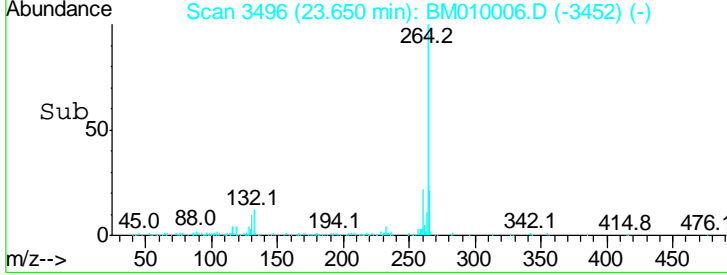
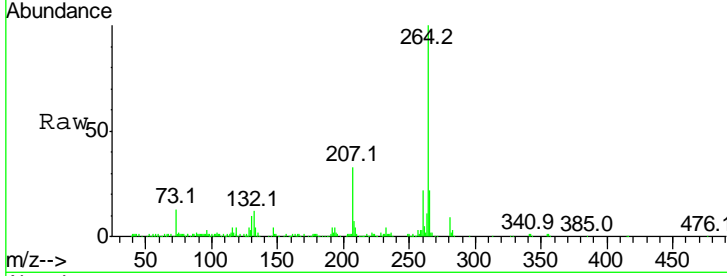
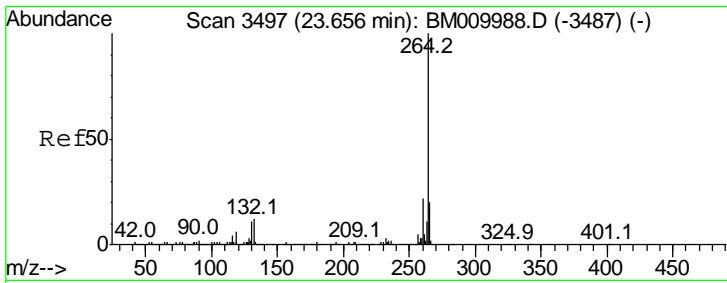
Tgt Ion	Resp	Lower	Upper
240	100		
120	9.8	8.2	12.2
236	24.4	20.0	30.0



#78  
 Terphenyl-d14  
 Concen: 70.43 ng  
 RT: 19.79 min Scan# 2840  
 Delta R.T. -0.02 min  
 Lab File: BM010006.D  
 Acq: 12 May 2017 04:06

Tgt Ion	Resp	Lower	Upper
244	100		
212	7.9	4.9	7.3#
122	8.6	6.2	9.4





#86  
 Perylene-d12  
 Concen: 20.00 ng  
 RT: 23.65 min Scan# 3496  
 Delta R.T. -0.04 min  
 Lab File: BM010006.D  
 Acq: 12 May 2017 04:06

Instrument :  
 BNA\_M  
 ClientSampleId :  
 LF001MW001-170509

Tot Ion	Ion	Ratio	Lower	Upper
297095	264	100		
	260	22.4	18.6	27.8
	265	22.0	17.3	25.9

