

Data Path : Z:\HPCHEM1\BNA M\DATA\BM051117\
 Data File : BM010018.D
 Acq On : 12 May 2017 11:17
 Operator : SJ/MA
 Sample : I3079-09DL2 50X
 Misc :
 ALS Vial : 33 Sample Multiplier: 1

Instrument :
 BNA_M
 ClientSampleId :
 SS043MW009-170509DL2

Quant Time: May 12 11:50:42 2017
 Quant Method : Z:\HPCHEM1\BNA M\METHODS\8270-BM051117.M
 Quant Title : ASP BNA STANDARDS FOR 5 POINT CALIBRATION
 QLast Update : Thu May 11 19:50:16 2017
 Response via : Initial Calibration

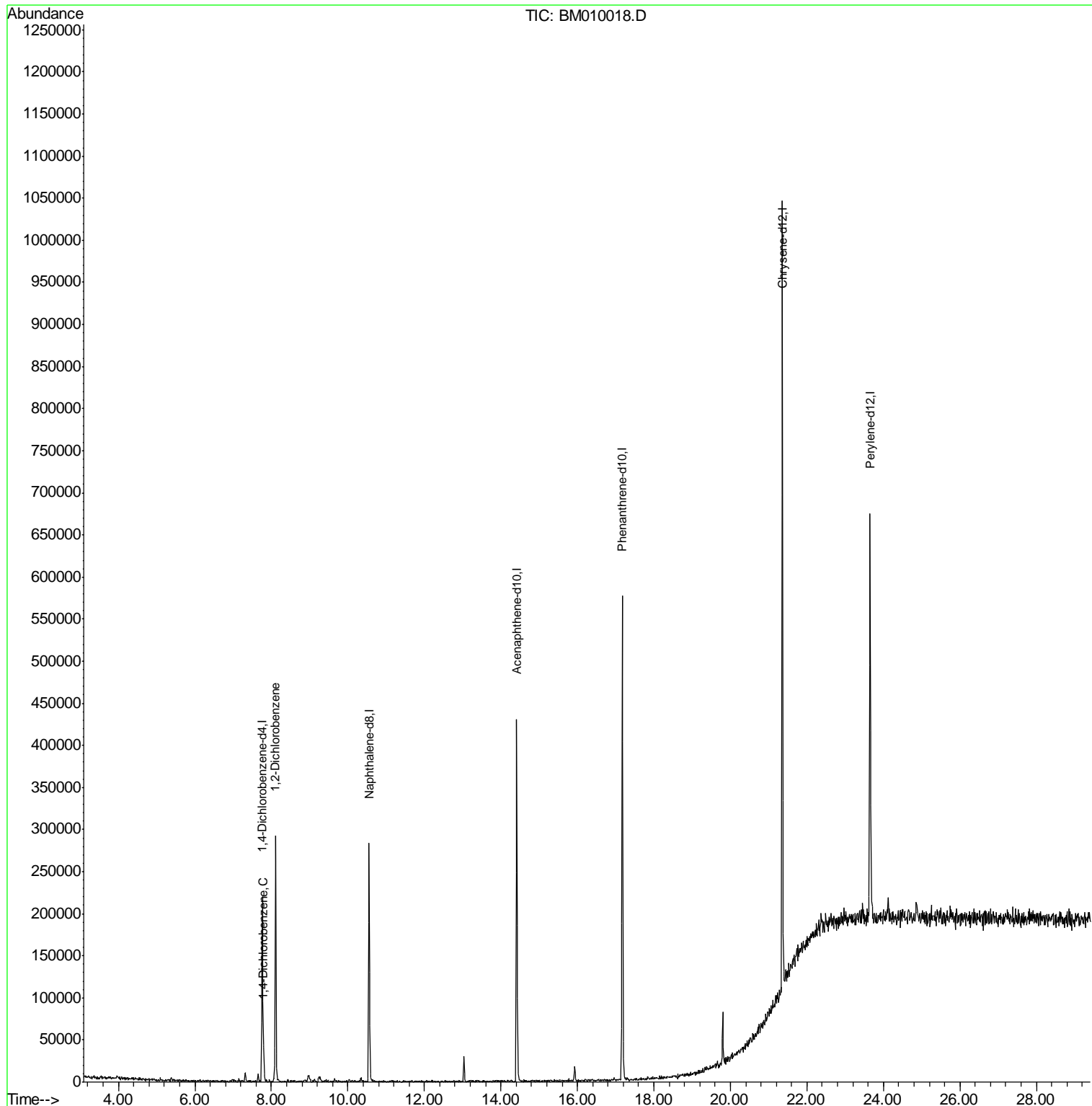
Internal Standards	R.T.	QIon	Response	Conc	Units	Dev(Min)
1) 1,4-Dichlorobenzene-d4	7.76	152	46748	20.00	ng	-0.02
21) Naphthalene-d8	10.56	136	198192	20.00	ng	-0.02
38) Acenaphthene-d10	14.42	164	133649	20.00	ng	-0.02
63) Phenanthrene-d10	17.17	188	348316	20.00	ng	-0.02
75) Chrysene-d12	21.36	240	463324	20.00	ng	-0.03
86) Perylene-d12	23.65	264	365103	20.00	ng	-0.04
System Monitoring Compounds						
5) 2-Fluorophenol	5.39	112	2552	0.85	ng	0.02
7) Phenol-d6	6.99	99	1566	0.33	ng	0.02
23) Nitrobenzene-d5	8.96	82	7703	1.42	ng	0.00
41) 2,4,6-Tribromophenol	15.93	330	2794	1.53	ng	0.00
44) 2-Fluorobiphenyl	13.03	172	15398	1.54	ng	-0.02
78) Terphenyl-d14	19.79	244	26088	1.19	ng	-0.02
Target Compounds						Qvalue
13) 1,4-Dichlorobenzene	7.80	146	13571	3.66	ng	# 87
14) 1,2-Dichlorobenzene	8.11	146	96639	26.87	ng	# 91

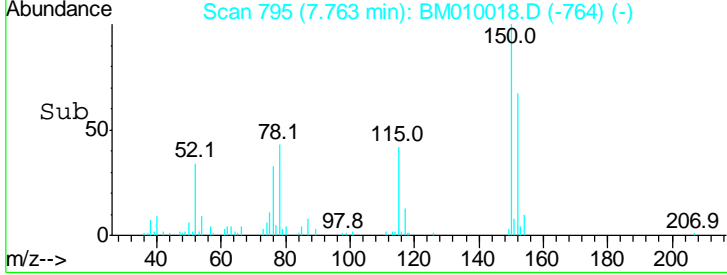
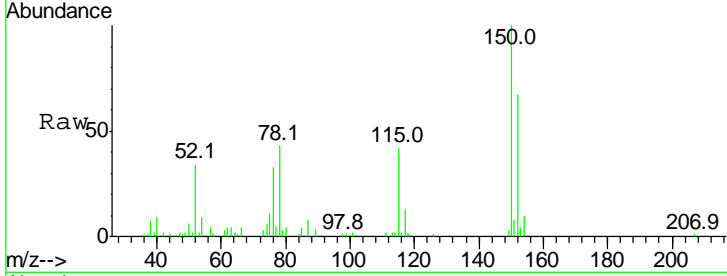
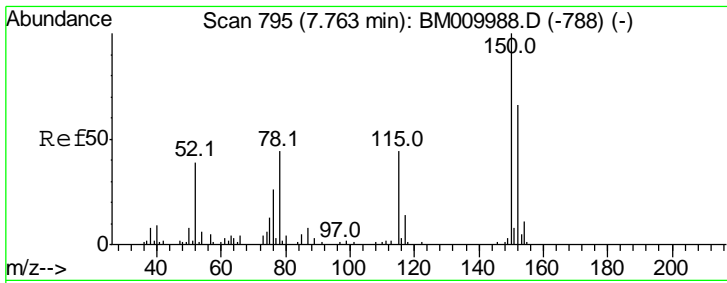
(#) = qualifier out of range (m) = manual integration (+) = signals summed

Data Path : Z:\HPCHEM1\BNA M\DATA\BM051117\
 Data File : BM010018.D
 Acq On : 12 May 2017 11:17
 Operator : SJ/MA
 Sample : I3079-09DL2 50X
 Misc :
 ALS Vial : 33 Sample Multiplier: 1

Instrument :
 BNA_M
ClientSampleId :
 SS043MW009-170509DL2

Quant Time: May 12 11:50:42 2017
 Quant Method : Z:\HPCHEM1\BNA M\METHODS\8270-BM051117.M
 Quant Title : ASP BNA STANDARDS FOR 5 POINT CALIBRATION
 QLast Update : Thu May 11 19:50:16 2017
 Response via : Initial Calibration

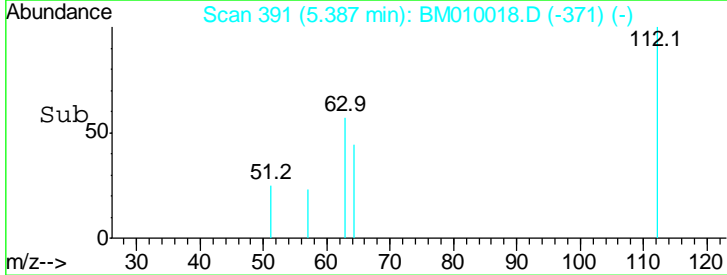
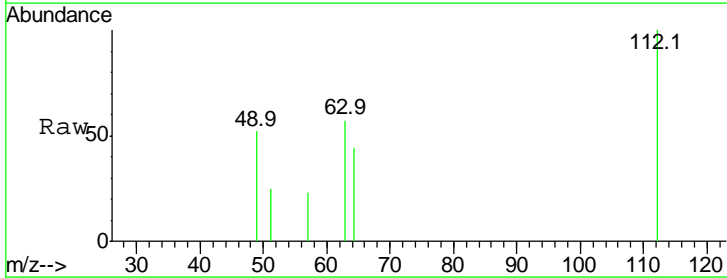
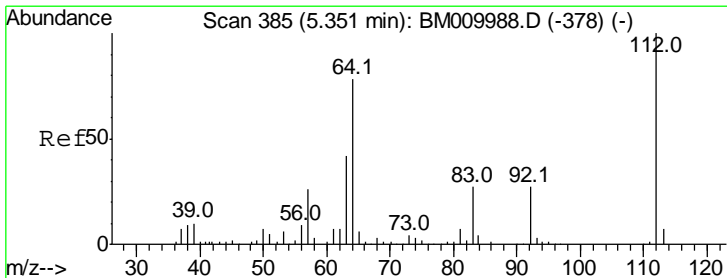
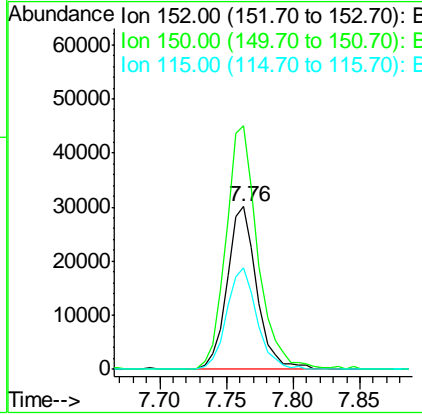




#1
 1,4-Dichlorobenzene-d4
 Concen: 20.00 ng
 RT: 7.76 min Scan# 795
 Delta R.T. -0.02 min
 Lab File: BM010018.D
 Acq: 12 May 2017 11:17

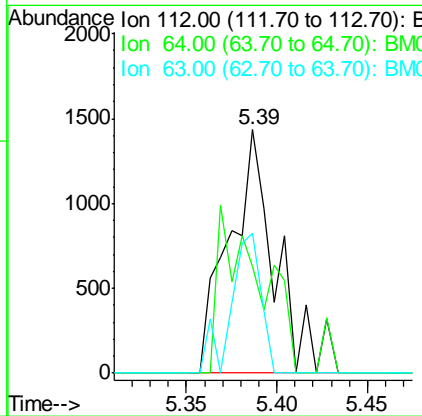
Instrument :
 BNA_M
ClientSampleId :
 SS043MW009-170509DL2

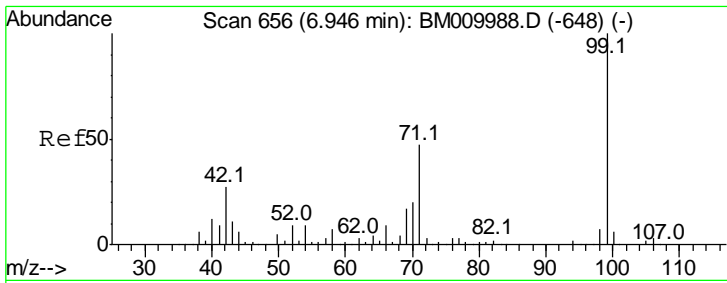
Tgt Ion	Resp	Lower	Upper
152	46748		
150	149.8	119.5	179.3
115	62.7	43.0	64.4



#5
 2-Fluorophenol
 Concen: 0.85 ng
 RT: 5.39 min Scan# 391
 Delta R.T. 0.02 min
 Lab File: BM010018.D
 Acq: 12 May 2017 11:17

Tgt Ion	Resp	Lower	Upper
112	2552		
64	44.0	38.6	57.8
63	57.4	19.3	28.9#

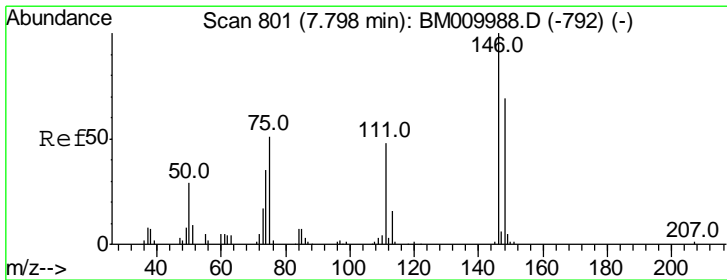
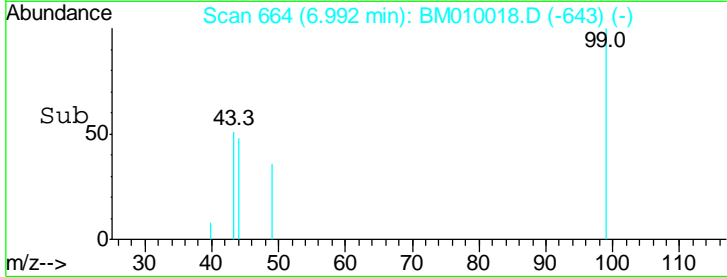
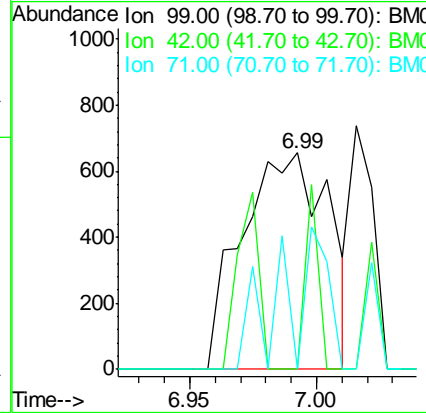
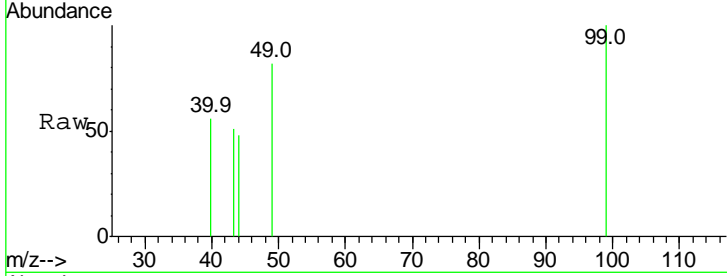




#7
 Phenol-d6
 Concen: 0.33 ng
 RT: 6.99 min Scan# 664
 Delta R.T. 0.02 min
 Lab File: BM010018.D
 Acq: 12 May 2017 11:17

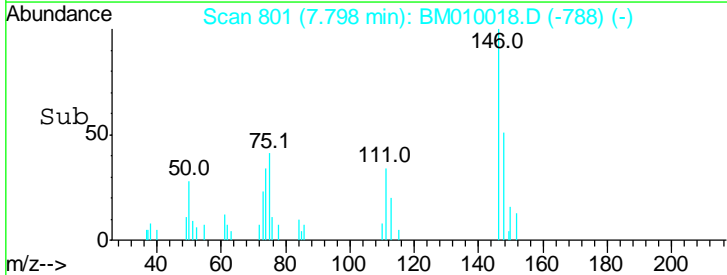
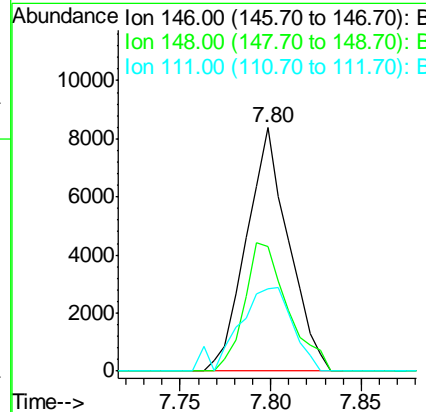
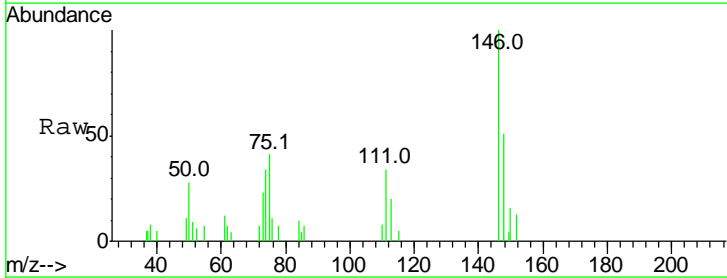
Instrument :
 BNA_M
ClientSampleID :
 SS043MW009-170509DL2

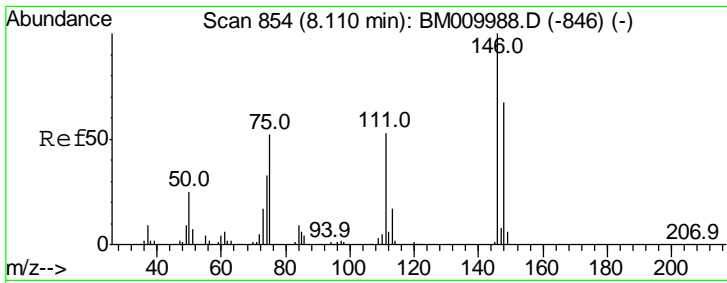
Tgt Ion	Resp	Lower	Upper
99	1566		
99	100		
42	0.0	11.0	16.4#
71	0.0	23.4	35.2#



#13
 1,4-Dichlorobenzene
 Concen: 3.66 ng
 RT: 7.80 min Scan# 801
 Delta R.T. -0.02 min
 Lab File: BM010018.D
 Acq: 12 May 2017 11:17

Tgt Ion	Resp	Lower	Upper
146	13571		
146	100		
148	50.9	51.9	77.9#
111	34.1	29.2	43.8

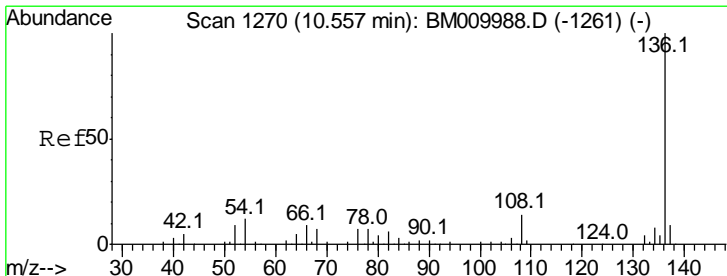
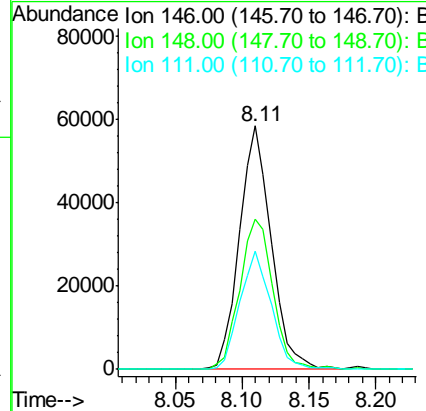
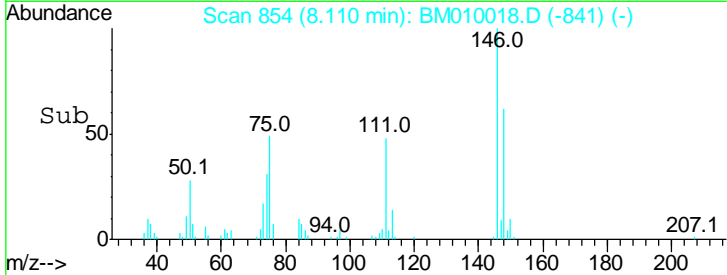
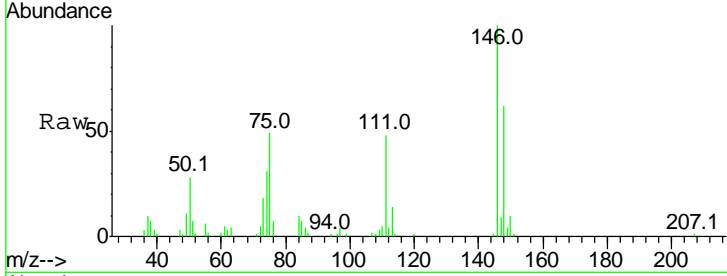




#14
 1,2-Dichlorobenzene
 Concen: 26.87 ng
 RT: 8.11 min Scan# 854
 Delta R.T. -0.02 min
 Lab File: BM010018.D
 Acq: 12 May 2017 11:17

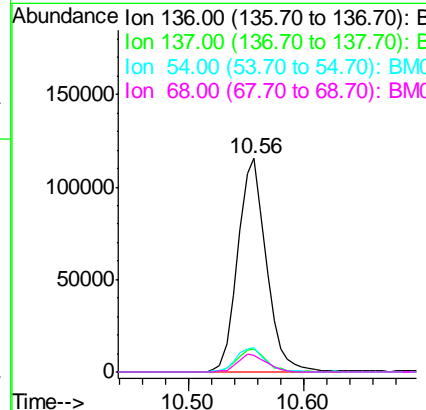
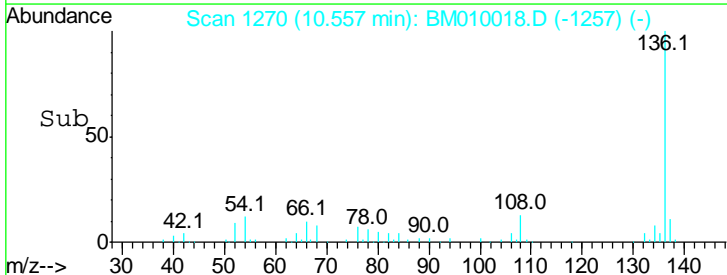
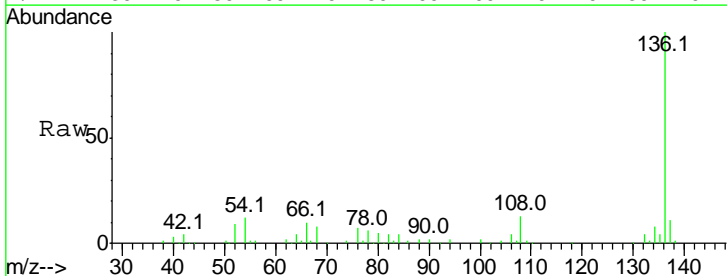
Instrument :
 BNA_M
 ClientSampleID :
 SS043MW009-170509DL2

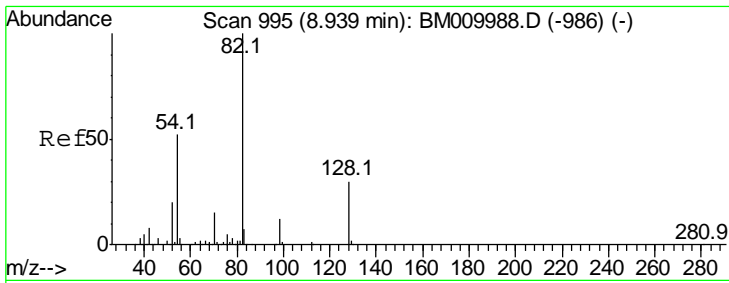
Tgt Ion	Resp	Lower	Upper
146	100		
148	61.7	52.3	78.5
111	48.5	30.6	45.8#



#21
 Naphthalene-d8
 Concen: 20.00 ng
 RT: 10.56 min Scan# 1270
 Delta R.T. -0.02 min
 Lab File: BM010018.D
 Acq: 12 May 2017 11:17

Tgt Ion	Resp	Lower	Upper
136	100		
137	10.5	8.7	13.1
54	11.5	4.6	6.8#
68	8.0	3.7	5.5#

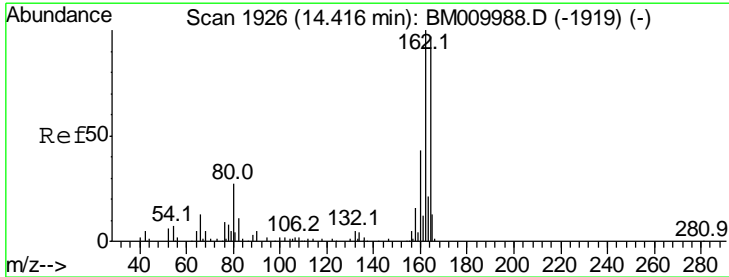
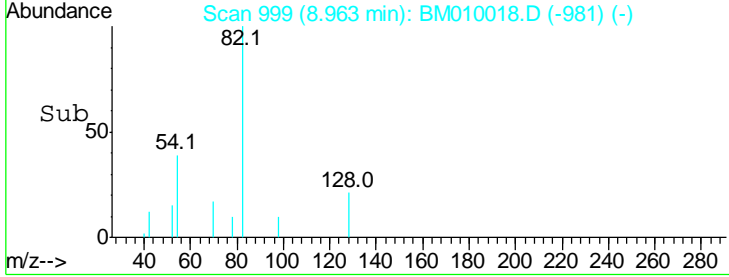
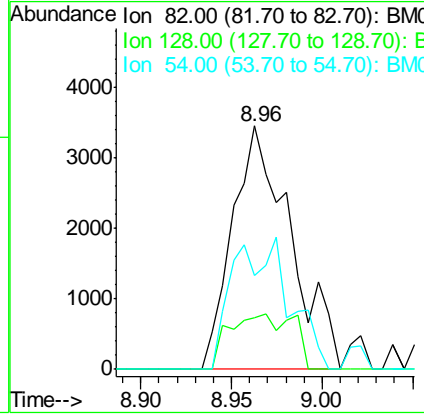
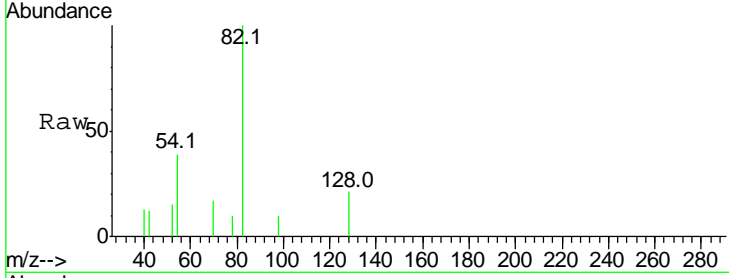




#23
 Nitrobenzene-d5
 Concen: 1.42 ng
 RT: 8.96 min Scan# 999
 Delta R.T. 0.01 min
 Lab File: BM010018.D
 Acq: 12 May 2017 11:17

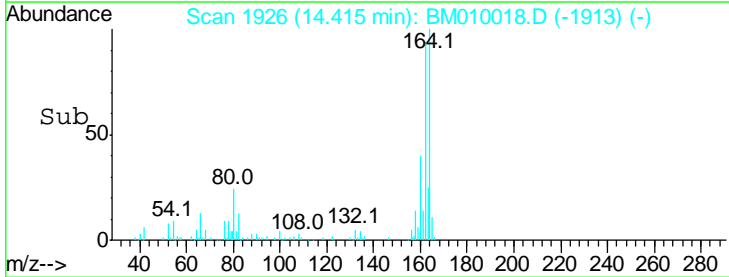
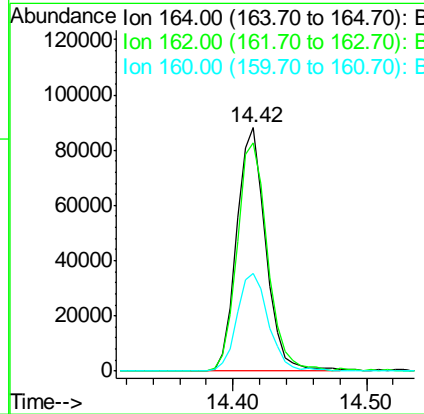
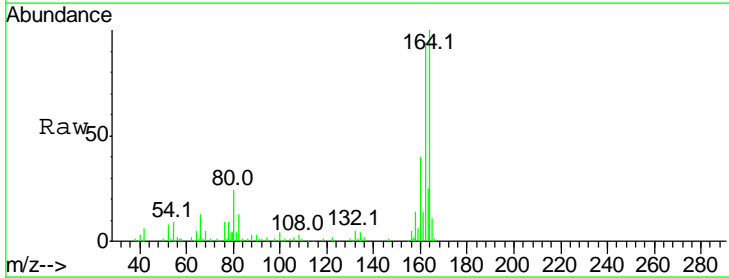
Instrument :
 BNA_M
ClientSampleId :
 SS043MW009-170509DL2

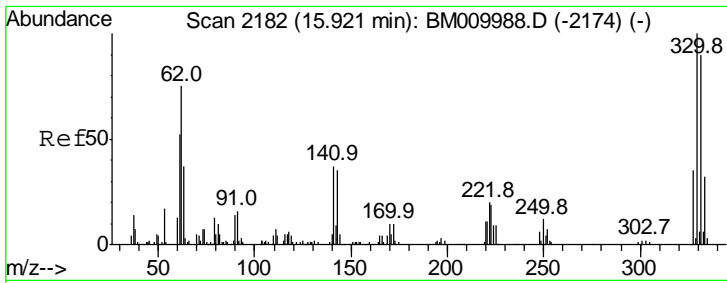
Tgt Ion	Resp	Lower	Upper
82	100		
128	21.4	32.8	49.2#
54	38.7	40.6	60.8#



#38
 Acenaphthene-d10
 Concen: 20.00 ng
 RT: 14.42 min Scan# 1926
 Delta R.T. -0.02 min
 Lab File: BM010018.D
 Acq: 12 May 2017 11:17

Tgt Ion	Resp	Lower	Upper
164	100		
162	93.9	82.4	123.6
160	40.2	35.8	53.6

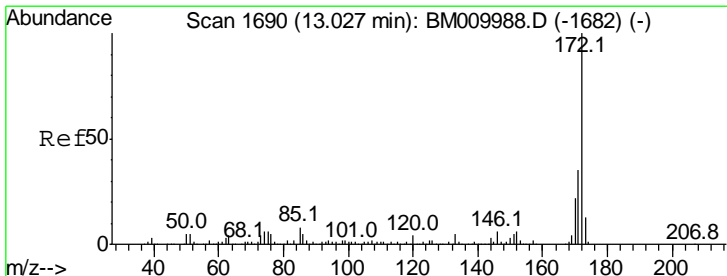
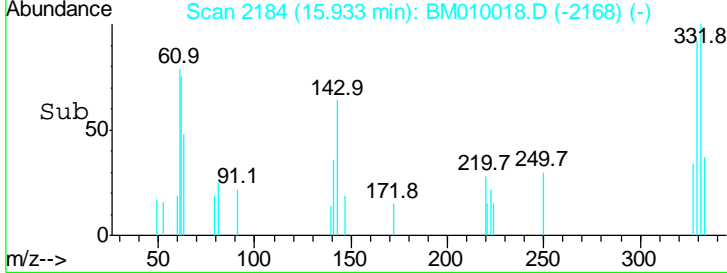
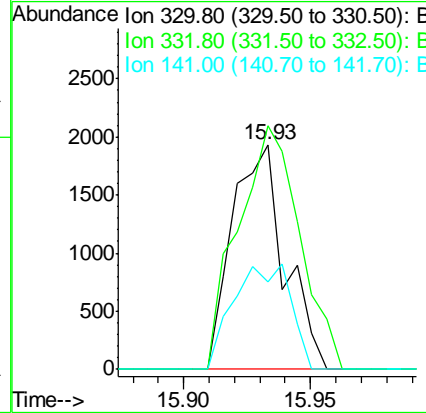
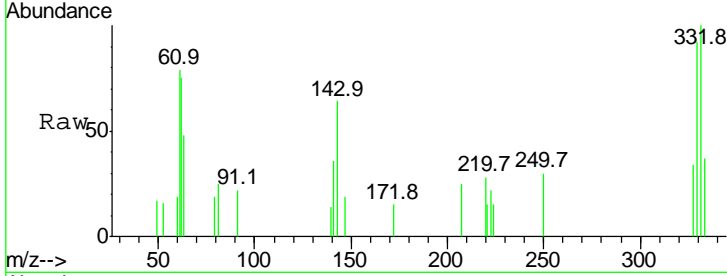




#41
 2,4,6-Tribromophenol
 Concen: 1.53 ng
 RT: 15.93 min Scan# 2184
 Delta R.T. -0.01 min
 Lab File: BM010018.D
 Acq: 12 May 2017 11:17

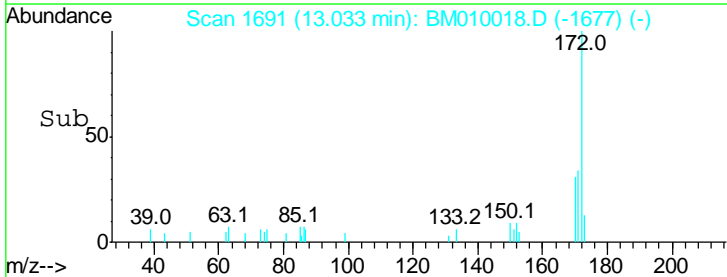
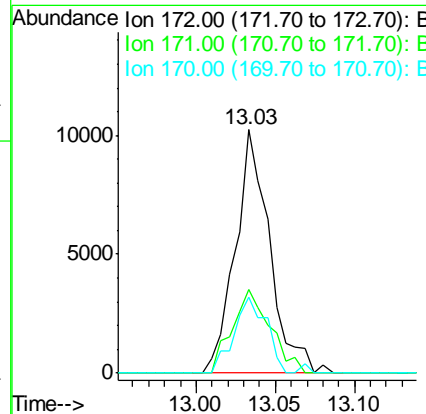
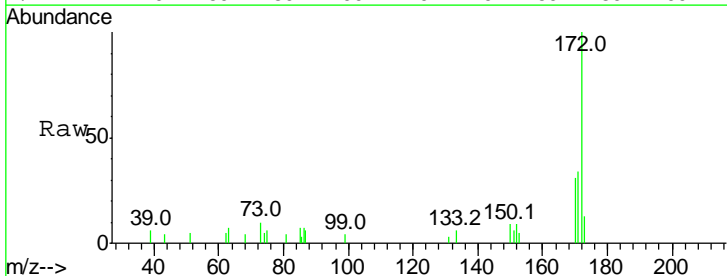
Instrument :
 BNA_M
 ClientSampleId :
 SS043MW009-170509DL2

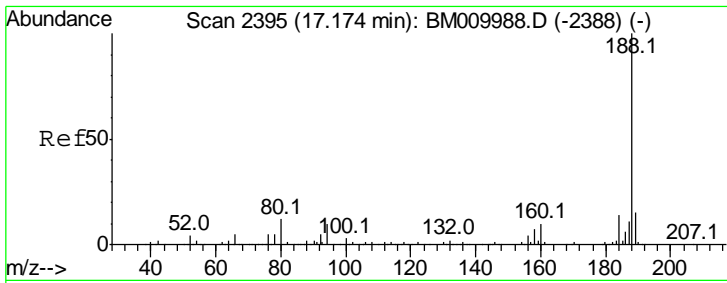
Tgt Ion	Resp	Lower	Upper
330	100		
332	127.2	0.0	0.0#
141	50.9	0.0	0.0#



#44
 2-Fluorobiphenyl
 Concen: 1.54 ng
 RT: 13.03 min Scan# 1691
 Delta R.T. -0.02 min
 Lab File: BM010018.D
 Acq: 12 May 2017 11:17

Tgt Ion	Resp	Lower	Upper
172	100		
171	34.4	28.5	42.7
170	31.1	18.8	28.2#

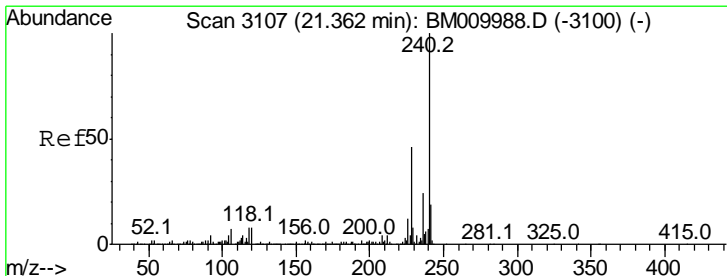
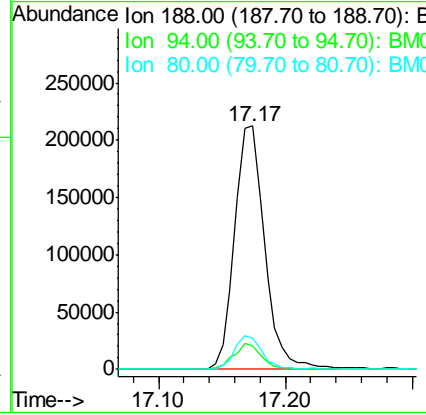
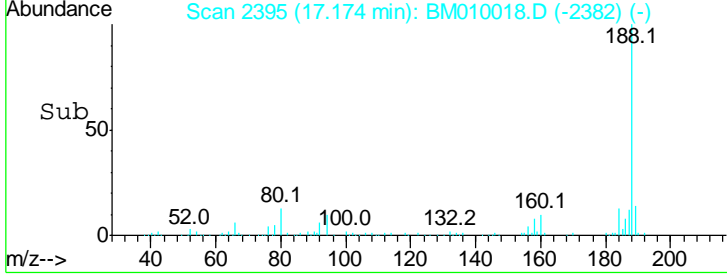
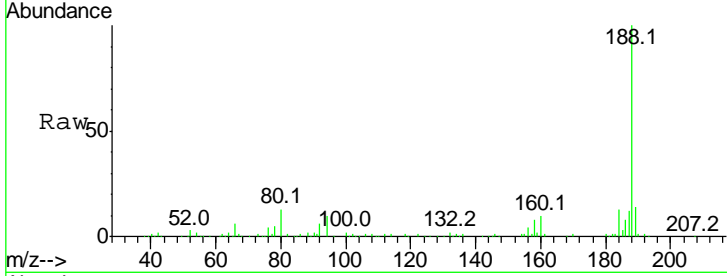




#63
 Phenanthrene-d10
 Concen: 20.00 ng
 RT: 17.17 min Scan# 2395
 Delta R.T. -0.02 min
 Lab File: BM010018.D
 Acq: 12 May 2017 11:17

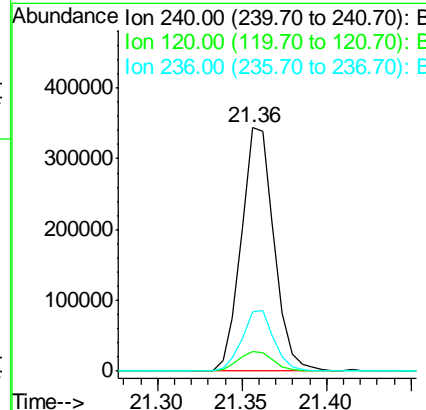
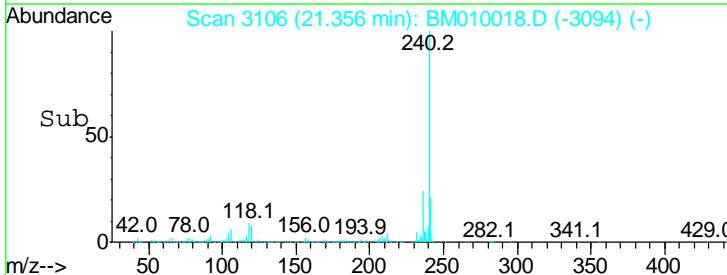
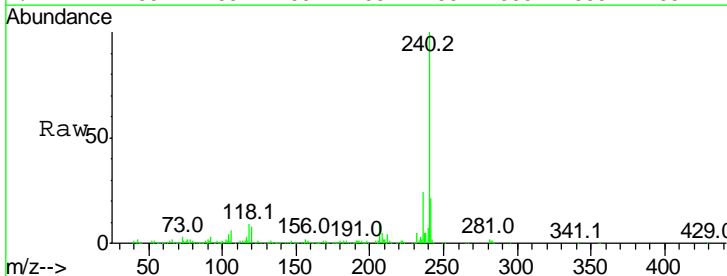
Instrument :
 BNA_M
 ClientSampled :
 SS043MW009-170509DL2

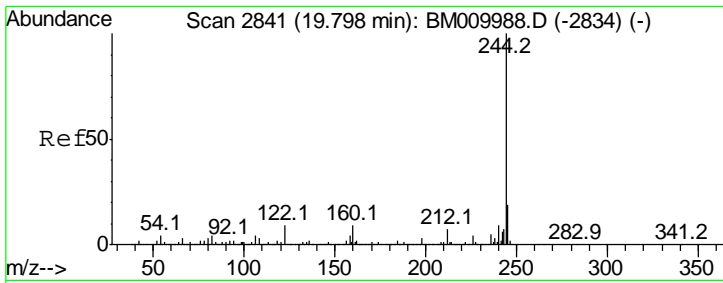
Tgt Ion	Resp	Lower	Upper
188	100		
94	9.7	8.7	13.1
80	12.9	9.3	13.9



#75
 Chrysene-d12
 Concen: 20.00 ng
 RT: 21.36 min Scan# 3106
 Delta R.T. -0.03 min
 Lab File: BM010018.D
 Acq: 12 May 2017 11:17

Tgt Ion	Resp	Lower	Upper
240	100		
120	8.0	8.2	12.2#
236	24.1	20.0	30.0

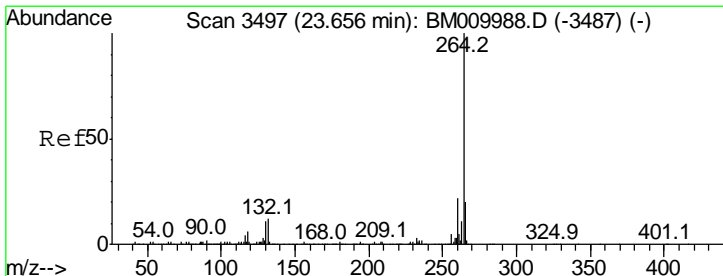
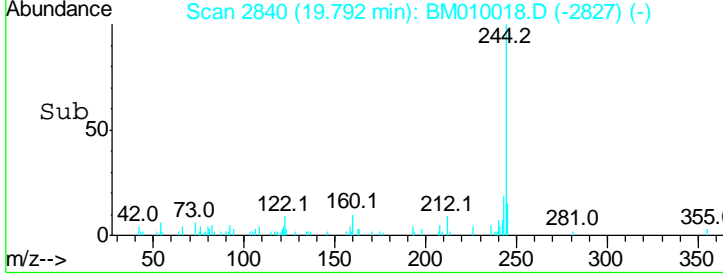
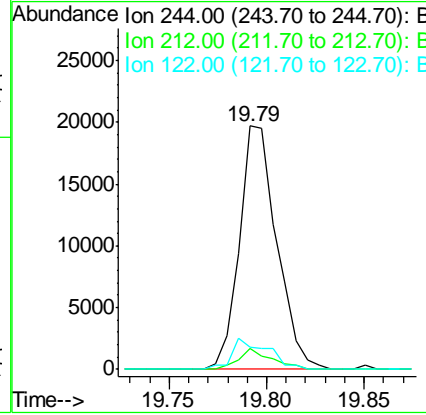
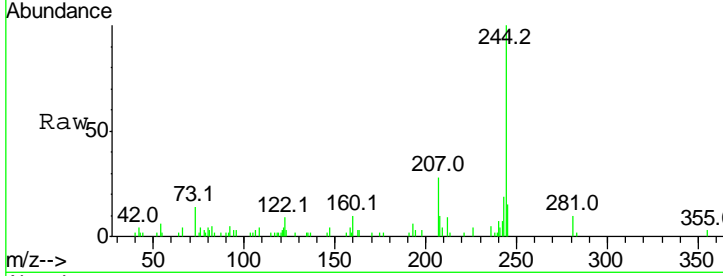




#78
 Terphenyl-d14
 Concen: 1.19 ng
 RT: 19.79 min Scan# 2840
 Delta R.T. -0.02 min
 Lab File: BM010018.D
 Acq: 12 May 2017 11:17

Instrument :
 BNA_M
ClientSampleID :
 SS043MW009-170509DL2

Tgt Ion	Ratio	Lower	Upper
244	100		
212	8.5	4.9	7.3#
122	9.2	6.2	9.4



#86
 Perylene-d12
 Concen: 20.00 ng
 RT: 23.65 min Scan# 3496
 Delta R.T. -0.04 min
 Lab File: BM010018.D
 Acq: 12 May 2017 11:17

Tgt Ion	Ratio	Lower	Upper
264	100		
260	22.1	18.6	27.8
265	21.9	17.3	25.9

