

Data Path : Z:\svoasrv\HPCHEM1\BNA_M\Data\BM051122\
 Data File : BM034986.D
 Acq On : 11 May 2022 15:42
 Operator : CG/JU
 Sample : N2603-06
 Misc :
 ALS Vial : 12 Sample Multiplier: 1

Instrument :
 BNA_M
 ClientSampleId :
 EW487

Integration Parameters: LSCINT.P

Integrator: RTE
 Smoothing : OFF Filtering: 5
 Sampling : 1 Min Area: 0.1 % of largest Peak
 Start Thrs: 0.2 Max Peaks: 100
 Stop Thrs : 0 Peak Location: TOP

If leading or trailing edge < 100 prefer < Baseline drop else tangent >
 Peak separation: 5

Method : Z:\svoasrv\HPCHEM1\BNA_M\Methods\SFAM-EPA-BM051022.M
 Title : SVOA CALIBRATION

Signal : TIC: BM034986.D\data.ms

peak #	R.T. min	first scan	max scan	last scan	PK TY	peak height	corr. area	corr. % max.	% of total
1	3.363	43	47	59	rVB	84388	118723	1.70%	0.158%
2	3.640	92	94	101	rVB	25984	37141	0.53%	0.050%
3	3.775	114	117	139	rBV	879545	1313020	18.76%	1.750%
4	4.110	170	174	179	rVB	24618	34903	0.50%	0.047%
5	4.469	232	235	238	rBV5	7350	9100	0.13%	0.012%
6	5.034	325	331	342	rVB3	23396	45198	0.65%	0.060%
7	5.128	342	347	352	rBV7	4718	8737	0.12%	0.012%
8	7.081	672	679	689	rBV	1381879	2139427	30.57%	2.851%
9	7.251	699	708	716	rBV	1043420	1623032	23.19%	2.163%
10	7.322	716	720	729	rVB	22037	36874	0.53%	0.049%
11	7.451	734	742	751	rBV	1419687	2200702	31.44%	2.933%
12	7.557	757	760	766	rVB6	10232	15349	0.22%	0.020%
13	7.922	815	822	830	rBV	779217	1230279	17.58%	1.640%
14	7.992	830	834	838	rVB2	10462	16354	0.23%	0.022%
15	8.622	933	941	953	rBV	1708287	2791147	39.88%	3.720%
16	9.075	1009	1018	1029	rBV	1364579	2222941	31.76%	2.963%
17	9.163	1029	1033	1038	rVB2	15814	23418	0.33%	0.031%
18	9.251	1044	1048	1051	rBV3	10363	16100	0.23%	0.021%
19	9.534	1090	1096	1102	rBV	27998	42620	0.61%	0.057%
20	9.798	1133	1141	1149	rBV	1165964	1893234	27.05%	2.523%
21	10.139	1194	1199	1204	rBV5	10104	20238	0.29%	0.027%
22	10.339	1225	1233	1243	rBV	1674604	2773038	39.62%	3.696%
23	10.722	1290	1298	1306	rBV	1157753	1906129	27.23%	2.540%
24	10.851	1310	1320	1327	rBV	1121241	1923093	27.48%	2.563%
25	11.175	1369	1375	1381	rVV	43719	73678	1.05%	0.098%
26	11.657	1447	1457	1463	rVB	6722	20039	0.29%	0.027%
27	11.763	1469	1475	1485	rBV4	17076	35136	0.50%	0.047%
28	12.022	1508	1519	1523	rBV9	6525	11418	0.16%	0.015%
29	12.157	1536	1542	1548	rBV	59754	90336	1.29%	0.120%
30	12.251	1553	1558	1563	rVV3	11439	22087	0.32%	0.029%
31	12.304	1563	1567	1573	rVV2	34490	60953	0.87%	0.081%
32	12.380	1576	1580	1584	rVB5	6110	9073	0.13%	0.012%
33	12.516	1599	1603	1608	rBV6	4195	8058	0.12%	0.011%
34	12.898	1664	1668	1671	rBV5	6960	9984	0.14%	0.013%
35	12.969	1676	1680	1684	rVB2	9453	11121	0.16%	0.015%
36	13.010	1684	1687	1691	rVB6	5799	8731	0.12%	0.012%

Data Path : Z:\svoasrv\HPCHEM1\BNA_M\Data\BM051122\
 Data File : BM034986.D
 Acq On : 11 May 2022 15:42
 Operator : CG/JU
 Sample : N2603-06
 Misc :
 ALS Vial : 12 Sample Multiplier: 1

Instrument :
 BNA_M
 ClientSampleId :
 EW487

Integration Parameters: LSCINT.P

Integrator: RTE
 Smoothing : OFF Filtering: 5
 Sampling : 1 Min Area: 0.1 % of largest Peak
 Start Thrs: 0.2 Max Peaks: 100
 Stop Thrs : 0 Peak Location: TOP

If leading or trailing edge < 100 prefer < Baseline drop else tangent >
 Peak separation: 5

Method : Z:\svoasrv\HPCHEM1\BNA_M\Methods\SFAM-EPA-BM051022.M
 Title : SVOA CALIBRATION

37	13.057	1691	1695	1697	rBV4	8177	12494	0.18%	0.017%
38	13.110	1697	1704	1709	rVB5	19522	40896	0.58%	0.055%
39	13.392	1745	1752	1758	rBV	71605	104905	1.50%	0.140%
40	13.486	1764	1768	1773	rVB	14194	17281	0.25%	0.023%
41	13.963	1838	1849	1858	rBV	3310887	4444051	63.50%	5.923%
42	14.051	1860	1864	1868	rVV3	25791	43025	0.61%	0.057%
43	14.086	1868	1870	1873	rVB4	7666	8323	0.12%	0.011%
44	14.174	1882	1885	1889	rVB2	11779	14487	0.21%	0.019%
45	14.245	1889	1897	1907	rBV	3515733	5124558	73.22%	6.830%
46	14.463	1929	1934	1941	rBV	63057	82911	1.18%	0.111%
47	14.551	1942	1949	1960	rBV	1802891	2647945	37.83%	3.529%
48	14.739	1974	1981	1996	rBV	1212256	1919699	27.43%	2.559%
49	14.839	1996	1998	2002	rVB4	9530	13092	0.19%	0.017%
50	14.963	2015	2019	2024	rVB7	18943	29229	0.42%	0.039%
51	15.080	2037	2039	2048	rVB9	13676	23163	0.33%	0.031%
52	15.180	2052	2056	2061	rVB8	6056	11785	0.17%	0.016%
53	15.257	2065	2069	2071	rBV4	9914	11733	0.17%	0.016%
54	15.351	2080	2085	2086	rBV4	10132	13851	0.20%	0.018%
55	15.415	2091	2096	2100	rBV	40926	51539	0.74%	0.069%
56	15.545	2109	2118	2125	rBV	4303352	6413780	91.64%	8.548%
57	15.651	2130	2136	2151	rVV	1352906	1897739	27.11%	2.529%
58	15.780	2153	2158	2162	rVV2	54861	94706	1.35%	0.126%
59	15.821	2162	2165	2174	rVB	30364	45391	0.65%	0.060%
60	15.974	2186	2191	2193	rBV6	7448	11513	0.16%	0.015%
61	16.033	2196	2201	2207	rVB8	20569	32389	0.46%	0.043%
62	16.104	2207	2213	2218	rBV8	8426	17499	0.25%	0.023%
63	16.233	2227	2235	2237	rBV8	8465	17689	0.25%	0.024%
64	16.274	2238	2242	2244	rVV	57056	78878	1.13%	0.105%
65	16.298	2244	2246	2259	rVB2	58702	108397	1.55%	0.144%
66	16.615	2295	2300	2303	rBV7	8400	14375	0.21%	0.019%
67	16.839	2332	2338	2342	rBV9	7562	16676	0.24%	0.022%
68	16.974	2355	2361	2365	rBV5	11076	17853	0.26%	0.024%
69	17.062	2370	2376	2380	rVV2	46538	68251	0.98%	0.091%
70	17.121	2381	2386	2391	rVB2	28688	50065	0.72%	0.067%
71	17.215	2399	2402	2406	rVB6	5934	9001	0.13%	0.012%
72	17.292	2408	2415	2425	rVV	2159952	3005997	42.95%	4.006%
73	17.392	2425	2432	2443	rVV	4644217	6563483	93.78%	8.748%
74	17.480	2443	2447	2453	rVB5	37374	59057	0.84%	0.079%
75	17.580	2462	2464	2471	rBV8	11853	21294	0.30%	0.028%
76	17.804	2496	2502	2507	rBV	40754	54415	0.78%	0.073%

Data Path : Z:\svoasrv\HPCHEM1\BNA_M\Data\BM051122\
 Data File : BM034986.D
 Acq On : 11 May 2022 15:42
 Operator : CG/JU
 Sample : N2603-06
 Misc :
 ALS Vial : 12 Sample Multiplier: 1

Instrument :
 BNA_M
 ClientSampleId :
 EW487

Integration Parameters: LSCINT.P

Integrator: RTE
 Smoothing : OFF Filtering: 5
 Sampling : 1 Min Area: 0.1 % of largest Peak
 Start Thrs: 0.2 Max Peaks: 100
 Stop Thrs : 0 Peak Location: TOP

If leading or trailing edge < 100 prefer < Baseline drop else tangent >
 Peak separation: 5

Method : Z:\svoasrv\HPCHEM1\BNA_M\Methods\SFAM-EPA-BM051022.M
 Title : SVOA CALIBRATION

77	17.968	2528	2530	2534	rVB3	17018	20103	0.29%	0.027%
78	18.021	2535	2539	2542	rVV5	6591	8627	0.12%	0.011%
79	18.192	2563	2568	2576	rBV	250080	341367	4.88%	0.455%
80	18.351	2591	2595	2598	rBV5	9953	13829	0.20%	0.018%
81	18.498	2616	2620	2626	rBV2	39288	58101	0.83%	0.077%
82	19.080	2715	2719	2723	rBV6	18720	33567	0.48%	0.045%
83	19.127	2723	2727	2734	rVV	38270	52208	0.75%	0.070%
84	19.245	2742	2747	2751	rBV	63754	92005	1.31%	0.123%
85	19.315	2751	2759	2762	rBV	72325	119758	1.71%	0.160%
86	19.345	2762	2764	2768	rVB4	36962	44379	0.63%	0.059%
87	19.468	2780	2785	2793	rBV	115639	161679	2.31%	0.215%
88	19.621	2808	2811	2814	rBV4	15601	17622	0.25%	0.023%
89	19.680	2815	2821	2828	rBV	5368773	6998970	100.00%	9.328%
90	20.233	2912	2915	2919	rBV2	46965	54432	0.78%	0.073%
91	20.539	2964	2967	2971	rBV5	42897	59141	0.84%	0.079%
92	20.733	2997	3000	3002	rVB2	44675	43338	0.62%	0.058%
93	21.186	3073	3077	3088	rBV	465596	673206	9.62%	0.897%
94	21.468	3119	3125	3135	rBV	1979577	2588929	36.99%	3.450%
95	21.633	3150	3153	3158	rBV4	74852	98997	1.41%	0.132%
96	22.097	3229	3232	3240	rVB3	77647	121452	1.74%	0.162%
97	22.586	3310	3315	3321	rBV4	150350	299487	4.28%	0.399%
98	23.139	3407	3409	3417	rVB	114804	158782	2.27%	0.212%
99	23.697	3497	3504	3512	rBV2	2593142	4837225	69.11%	6.447%
100	23.850	3523	3530	3542	rVB2	1050012	2118919	30.27%	2.824%

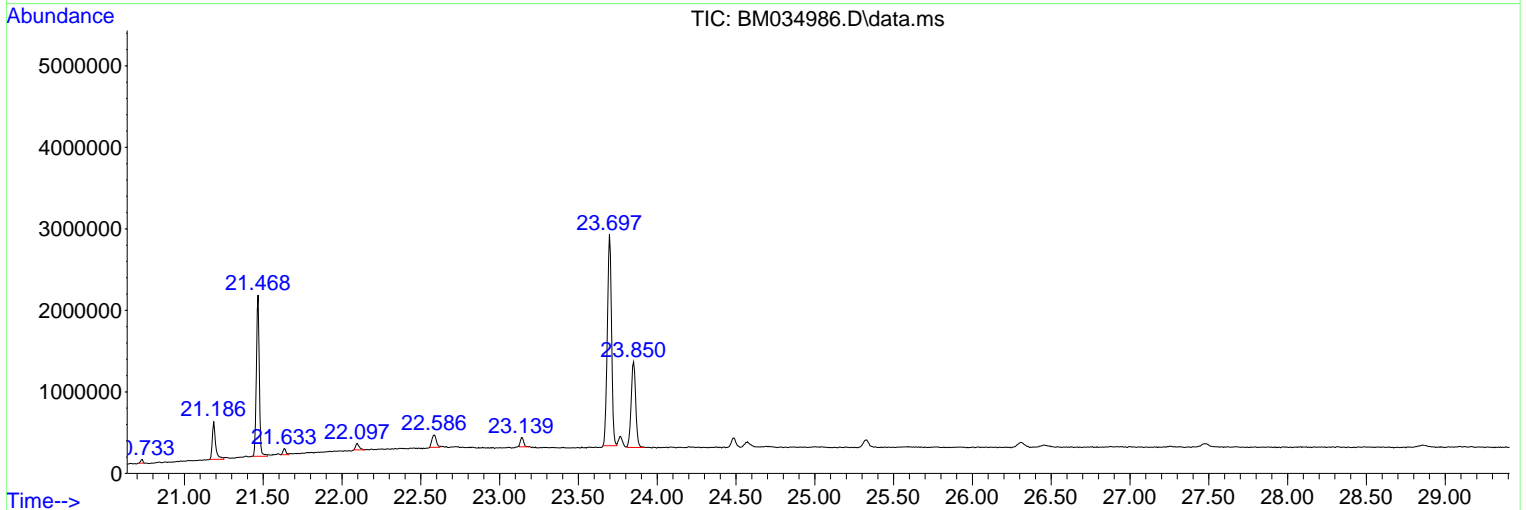
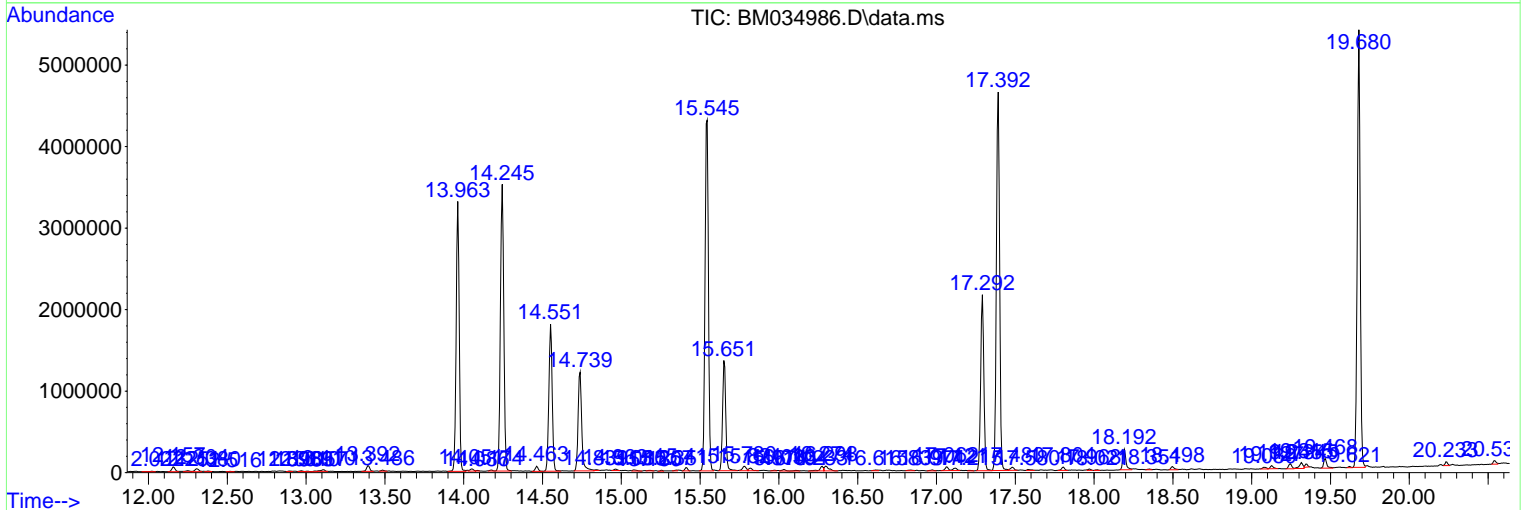
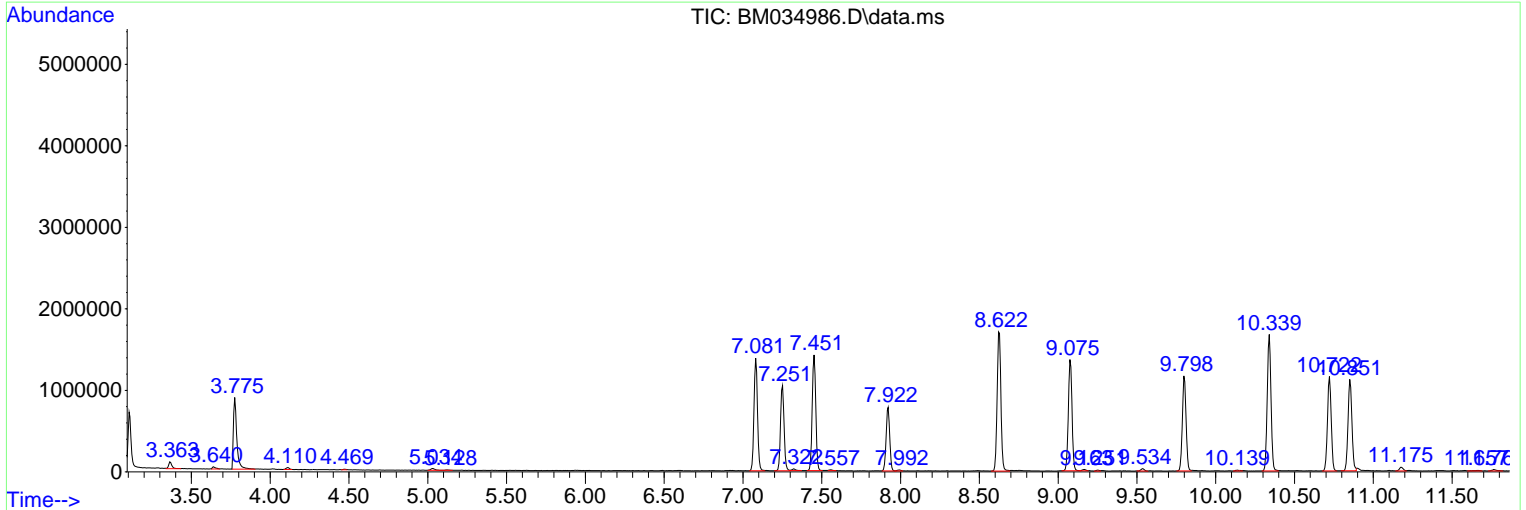
Sum of corrected areas: 75030949

Data Path : Z:\svoasrv\HPCHEM1\BNA_M\Data\BM051122\
 Data File : BM034986.D
 Acq On : 11 May 2022 15:42
 Operator : CG/JU
 Sample : N2603-06
 Misc :
 ALS Vial : 12 Sample Multiplier: 1

Instrument :
 BNA_M
ClientSampleId :
 EW487

Quant Method : Z:\svoasrv\HPCHEM1\BNA_M\Methods\SFAM-EPA-BM051022.M
 Quant Title : SVOA CALIBRATION

TIC Library : C:\Database\NIST20.L
 TIC Integration Parameters: LSCINT.P



Data Path : Z:\svoasrv\HPCHEM1\BNA_M\Data\BM051122\
 Data File : BM034986.D
 Acq On : 11 May 2022 15:42
 Operator : CG/JU
 Sample : N2603-06
 Misc :
 ALS Vial : 12 Sample Multiplier: 1

Instrument :
 BNA_M
 ClientSampleId :
 EW487

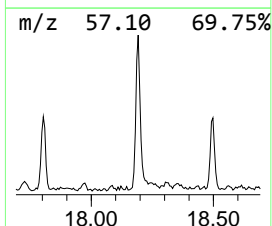
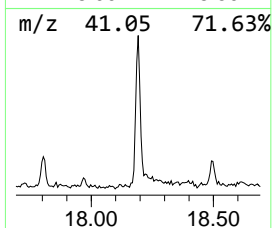
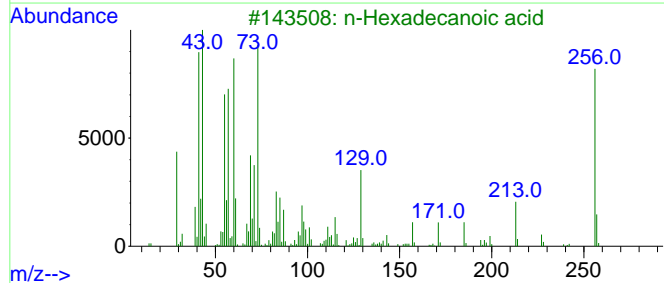
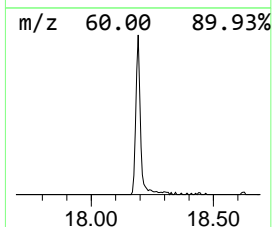
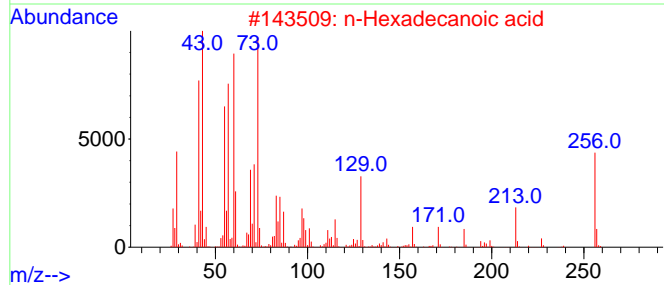
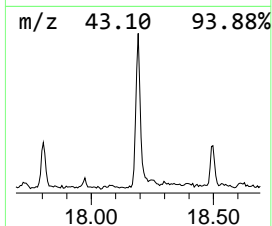
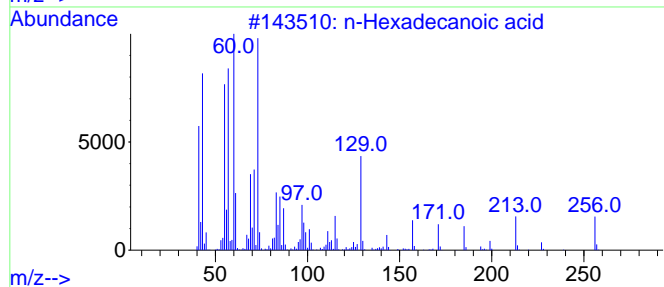
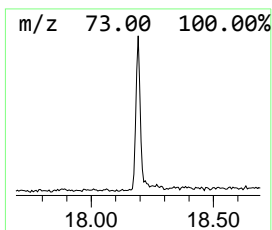
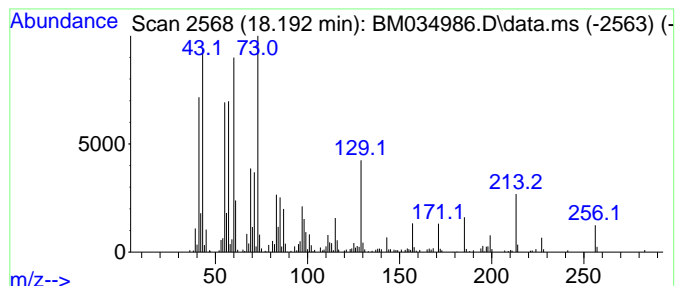
Quant Method : Z:\svoasrv\HPCHEM1\BNA_M\Methods\SFAM-EPA-BM051022.M
 Quant Title : SVOA CALIBRATION

TIC Library : C:\Database\NIST20.L
 TIC Integration Parameters: LSCINT.P

 Peak Number 1 n-Hexadecanoic acid Concentration Rank 3

R.T.	EstConc	Area	Relative to ISTD	R.T.
18.192	2.27 ng/ul	341367	Phenanthrene-d10	17.292

Hit#	of 5	Tentative ID	MW	MolForm	CAS#	Qual
1		n-Hexadecanoic acid	256	C16H32O2	000057-10-3	99
2		n-Hexadecanoic acid	256	C16H32O2	000057-10-3	98
3		n-Hexadecanoic acid	256	C16H32O2	000057-10-3	98
4		n-Hexadecanoic acid	256	C16H32O2	000057-10-3	98
5		Tridecanoic acid	214	C13H26O2	000638-53-9	93



Data Path : Z:\svoasrv\HPCHEM1\BNA_M\Data\BM051122\
 Data File : BM034986.D
 Acq On : 11 May 2022 15:42
 Operator : CG/JU
 Sample : N2603-06
 Misc :
 ALS Vial : 12 Sample Multiplier: 1

Instrument :
 BNA_M
 ClientSampleId :
 EW487

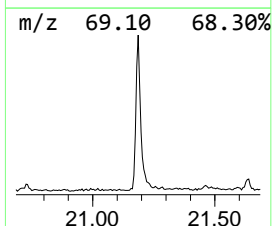
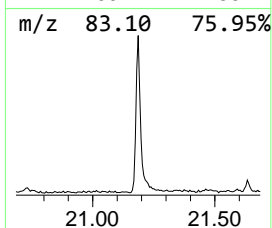
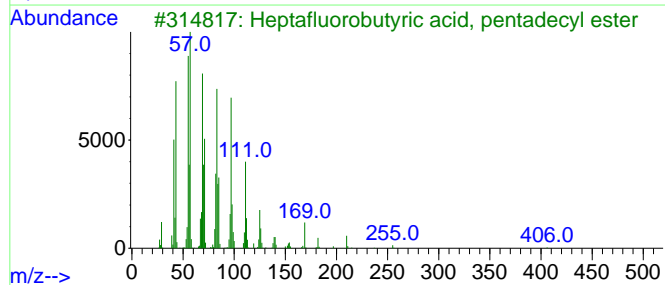
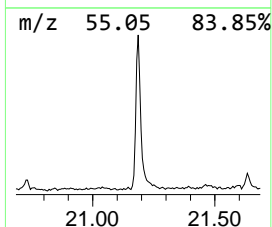
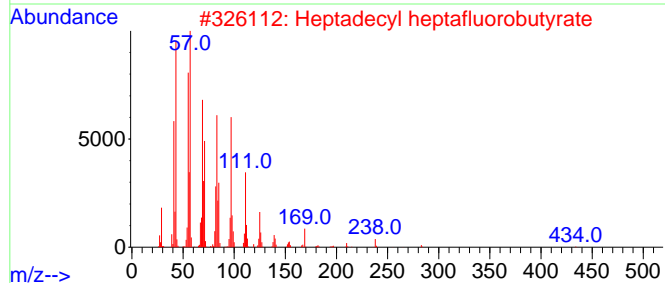
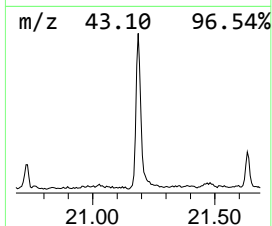
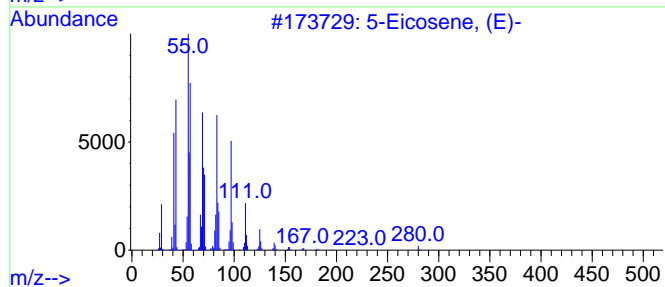
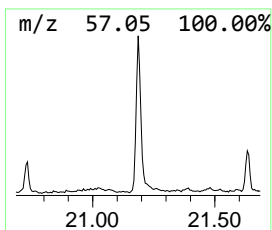
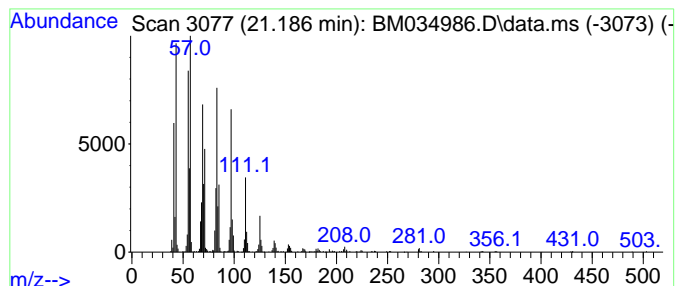
Quant Method : Z:\svoasrv\HPCHEM1\BNA_M\Methods\SFAM-EPA-BM051022.M
 Quant Title : SVOA CALIBRATION

TIC Library : C:\Database\NIST20.L
 TIC Integration Parameters: LSCINT.P

 Peak Number 2 (DEL) Alkane: Straight-Chai... Concentration Rank 1

R.T.	EstConc	Area	Relative to ISTD	R.T.
21.186	5.20 ng/ul	673206	Chrysene-d12	21.468

Hit#	of 5	Tentative ID	MW	MolForm	CAS#	Qual
1		5-Eicosene, (E)-	280	C20H40	074685-30-6	95
2		Heptadecyl heptafluorobutyrate	452	C21H35F7O2	959085-66-6	94
3		Heptafluorobutyric acid, pentadecyl ester	424	C19H31F7O2	959261-23-5	94
4		Pentafluoropropionic acid, hexadecyl ester	388	C19H33F5O2	006222-07-7	94
5		Heptadecyl trifluoroacetate	352	C19H35F3O2	1010351-87-0	94



Data Path : Z:\svoasrv\HPCHEM1\BNA_M\Data\BM051122\
 Data File : BM034986.D
 Acq On : 11 May 2022 15:42
 Operator : CG/JU
 Sample : N2603-06
 Misc :
 ALS Vial : 12 Sample Multiplier: 1

Instrument :
 BNA_M
 ClientSampleId :
 EW487

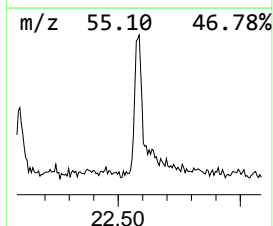
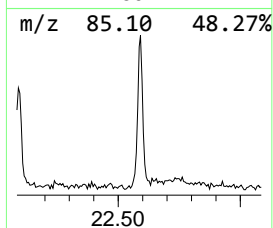
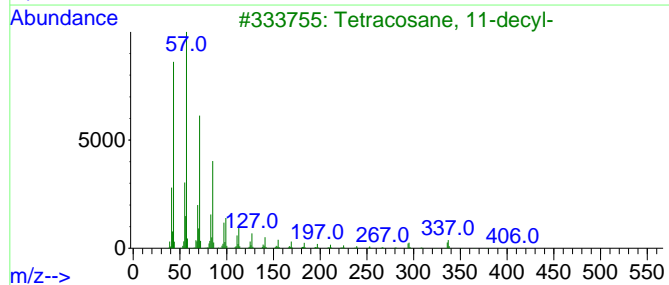
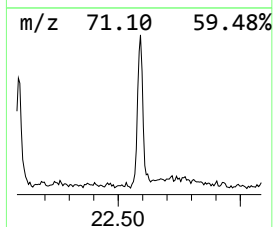
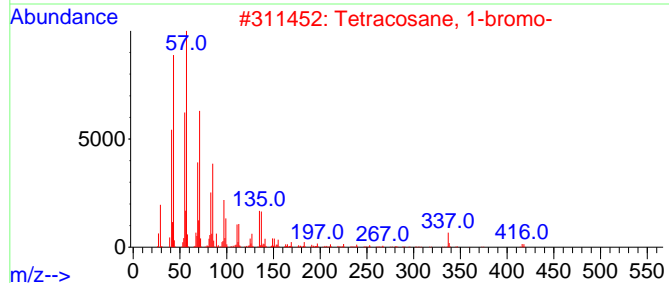
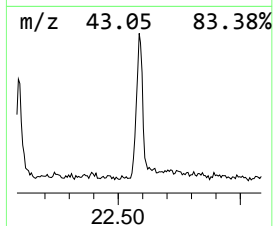
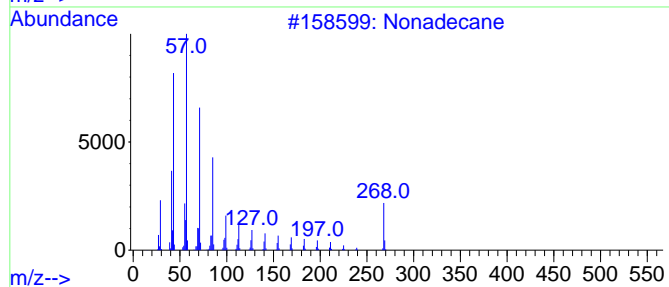
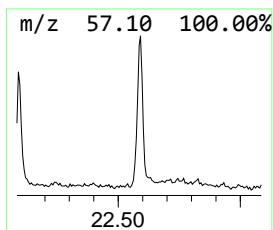
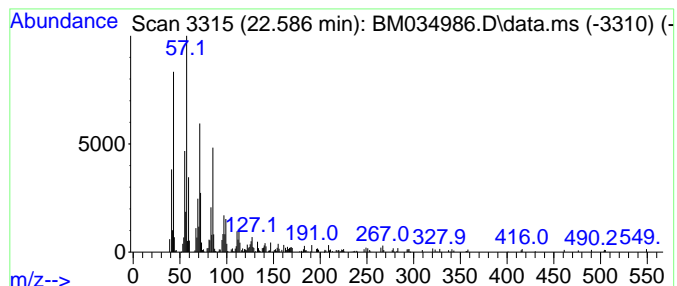
Quant Method : Z:\svoasrv\HPCHEM1\BNA_M\Methods\SFAM-EPA-BM051022.M
 Quant Title : SVOA CALIBRATION

TIC Library : C:\Database\NIST20.L
 TIC Integration Parameters: LSCINT.P

 Peak Number 3 (DEL) Alkane: Straight-Chai... Concentration Rank 2

R.T.	EstConc	Area	Relative to ISTD	R.T.
22.586	2.31 ng/ul	299487	Chrysene-d12	21.468

Hit#	of 5	Tentative ID	MW	MolForm	CAS#	Qual
1		Nonadecane	268	C19H40	000629-92-5	90
2		Tetracosane, 1-bromo-	416	C24H49Br	006946-24-3	62
3		Tetracosane, 11-decyl-	479	C34H70	055429-84-0	60
4		Octacosane	394	C28H58	000630-02-4	60
5		Heptacosane, 1-chloro-	414	C27H55Cl	062016-79-9	60



Data Path : Z:\svoasrv\HPCHEM1\BNA_M\Data\BM051122\
 Data File : BM034986.D
 Acq On : 11 May 2022 15:42
 Operator : CG/JU
 Sample : N2603-06
 Misc :
 ALS Vial : 12 Sample Multiplier: 1

Instrument :
 BNA_M
 ClientSampleId :
 EW487

Quant Method : Z:\svoasrv\HPCHEM1\BNA_M\Methods\SFAM-EPA-BM051022.M
 Quant Title : SVOA CALIBRATION

TIC Library : C:\Database\NIST20.L
 TIC Integration Parameters: LSCINT.P

TIC Top Hit name	RT	EstConc	Units	Response	--Internal Standard--			
					#	RT	Resp	Conc
n-Hexadecanoic ...	18.192	2.3	ng/u1	341367	4	17.292	3006000	20.0
(DEL) Alkane: S...	21.186	5.2	ng/u1	673206	5	21.468	2588930	20.0
(DEL) Alkane: S...	22.586	2.3	ng/u1	299487	5	21.468	2588930	20.0