

Data Path : Z:\HPCHEM1\BNA_M\DATA\BM051216\
 Data File : BM005414.D
 Acq On : 12 May 2016 11:25
 Operator : UM/SJ
 Sample : H2890-19
 Misc :
 ALS Vial : 6 Sample Multiplier: 1

Instrument :
 BNA_M
 ClientSampleId :
 D9X06

Manual Integrations
 APPROVED

sohil
 5/13/2016 8:02:05 PM

Quant Time: May 13 03:42:31 2016
 Quant Method : Z:\HPCHEM1\BNA_M\METHODS\SOM02.2-EPA-BM050516.M
 Quant Title : SVOA CALIBRATION
 QLast Update : Fri May 13 03:22:52 2016
 Response via : Initial Calibration

Internal Standards	R.T.	QIon	Response	Conc	Units	Dev(Min)
1) 1,4-Dichlorobenzene-d4	7.76	152	66530	20.00	ng/ul	0.00
18) Naphthalene-d8	10.55	136	332689	20.00	ng/ul	0.00
35) Acenaphthene-d10	14.40	164	237044	20.00	ng/ul	0.00
61) Phenanthrene-d10	17.15	188	573874	20.00	ng/ul	0.00
75) Chrysene-d12	21.34	240	587235	20.00	ng/ul	0.00
83) Perylene-d12	23.61	264	429686	20.00	ng/ul	0.00

System Monitoring Compounds

3) 1,4-Dioxane-d8	3.26	96	1034	0.73	ng/uL	0.00
5) Phenol-d5	6.93	99	21709	3.60	ng/ul	0.00
7) Bis-(2-Chloroethyl)ether-d	7.09	67	56889	16.53	ng/ul	0.00
9) 2-Chlorophenol-d4	7.29	132	62325	13.68	ng/ul	0.00
13) 4-Methylphenol-d8	8.47	113	40117m	8.04	ng/ul	0.00
19) Nitrobenzene-d5	8.92	128	37100	15.62	ng/ul	0.00
22) 2-Nitrophenol-d4	9.63	143	42443	15.78	ng/ul	0.00
26) 2,4-Dichlorophenol-d3	10.17	165	78619	15.73	ng/ul	0.00
29) 4-Chloroaniline-d4	10.71	131	2248	0.37	ng/ul	0.02
43) Dimethylphthalate-d6	13.81	166	296810	15.62	ng/ul	0.00
46) Acenaphthylene-d8	14.09	160	348912	15.66	ng/ul	0.00
51) 4-Nitrophenol-d4	14.64	143	5401m	1.56	ng/ul	0.03
57) Fluorene-d10	15.39	176	264698	16.13	ng/ul	0.00
62) 4,6-Dinitro-2-methylphenol	15.53	200	29676	9.19	ng/ul	0.00
70) Anthracene-d10	17.24	188	407189	16.05	ng/ul	0.00
76) Pyrene-d10	19.54	212	487278	17.98	ng/ul	0.00
87) Benzo(a)pyrene-d12	23.46	264	306066	16.09	ng/ul	0.00

Target Compounds

Target Compounds	R.T.	QIon	Response	Conc	Units	Qvalue
44) Dimethylphthalate	13.85	163	55614	2.93	ng/ul	99

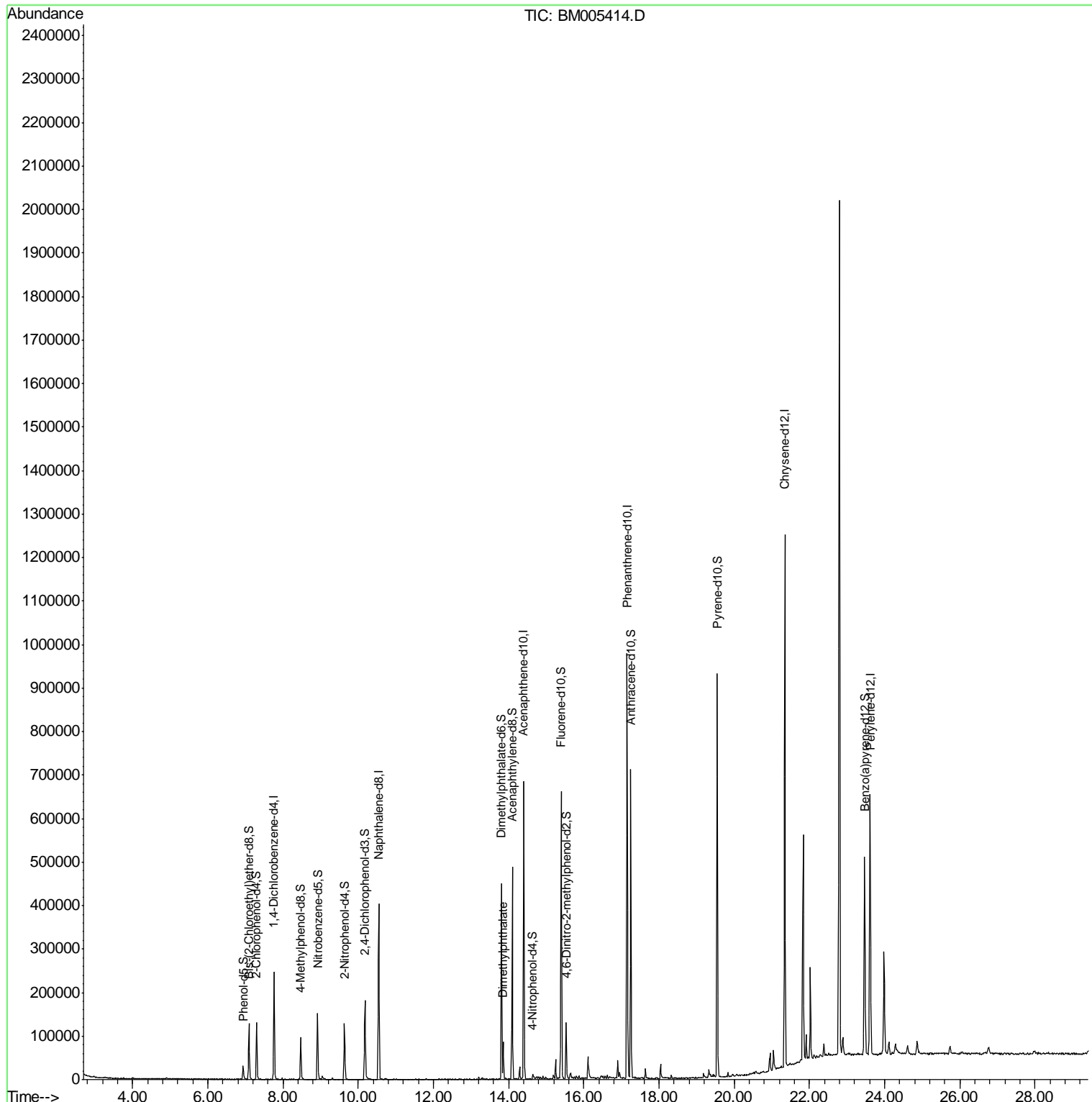
(#) = qualifier out of range (m) = manual integration (+) = signals summed

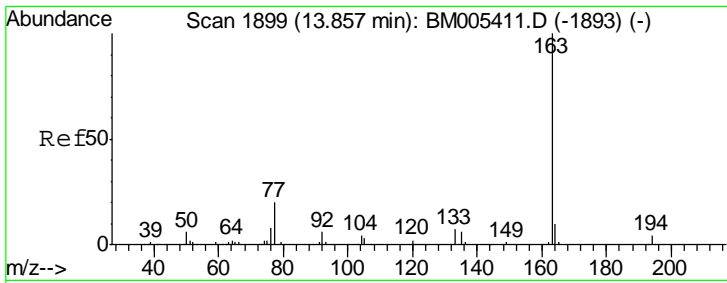
Data Path : Z:\HPCHEM1\BNA_M\DATA\BM051216\
 Data File : BM005414.D
 Acq On : 12 May 2016 11:25
 Operator : UM/SJ
 Sample : H2890-19
 Misc :
 ALS Vial : 6 Sample Multiplier: 1

Instrument :
 BNA_M
ClientSampled :
 D9X06

Manual Integrations
APPROVED
 sohil
 5/13/2016 8:02:05 PM

Quant Time: May 13 03:42:31 2016
 Quant Method : Z:\HPCHEM1\BNA_M\METHODS\SOM02.2-EPA-BM050516.M
 Quant Title : SVOA CALIBRATION
 QLast Update : Fri May 13 03:22:52 2016
 Response via : Initial Calibration





#44
 Dimethylphthalate
 Concen: 2.93 ng/ul
 RT: 13.85 min Scan# 1898
 Delta R.T. -0.01 min
 Lab File: BM005414.D
 Acq: 12 May 2016 11:25

Instrument :
 BNA_M
 ClientSampled :
 D9X06

Tgt Ion	Resp	Lower	Upper
163	100		
194	4.0	3.4	5.0
164	9.5	7.9	11.9

Manual Integrations
 APPROVED
 sohil
 5/13/2016 8:02:05 PM

