

Data Path : Z:\HPCHEM1\BNA\_M\Data\BM051316\  
 Data File : BM005449.D  
 Acq On : 14 May 2016 04:32  
 Operator : UM/SJ  
 Sample : SSTDCCC020  
 Misc :  
 ALS Vial : 2 Sample Multiplier: 1

Instrument :  
 BNA\_M  
 ClientSampleId :  
 SSTD02035

Quant Time: May 14 05:19:30 2016  
 Quant Method : Z:\HPCHEM1\BNA\_M\METHODS\SOM02.2-EPA-BM050516.M  
 Quant Title : SVOA CALIBRATION  
 QLast Update : Sat May 14 00:15:57 2016  
 Response via : Initial Calibration

Internal Standards	R.T.	QIon	Response	Conc	Units	Dev(Min)
1) 1,4-Dichlorobenzene-d4	7.75	152	51526	20.00	ng/ul	0.00
18) Naphthalene-d8	10.53	136	233474	20.00	ng/ul	0.00
35) Acenaphthene-d10	14.39	164	144192	20.00	ng/ul	0.00
61) Phenanthrene-d10	17.14	188	357486	20.00	ng/ul	0.00
75) Chrysene-d12	21.34	240	439148	20.00	ng/ul	0.00
83) Perylene-d12	23.60	264	397039	20.00	ng/ul	0.00

## System Monitoring Compounds

3) 1,4-Dioxane-d8	3.25	96	9729	8.88	ng/uL	0.00
5) Phenol-d5	6.93	99	91595	19.60	ng/ul	0.00
7) Bis-(2-Chloroethyl)ether-d	7.09	67	54243	20.35	ng/ul	0.00
9) 2-Chlorophenol-d4	7.29	132	71227	20.18	ng/ul	0.00
13) 4-Methylphenol-d8	8.46	113	72213	18.70	ng/ul	0.00
19) Nitrobenzene-d5	8.91	128	34901	20.94	ng/ul	0.00
22) 2-Nitrophenol-d4	9.63	143	40062	21.23	ng/ul	0.00
26) 2,4-Dichlorophenol-d3	10.17	165	73301	20.90	ng/ul	0.00
29) 4-Chloroaniline-d4	10.68	131	93039	22.04	ng/ul	0.00
43) Dimethylphthalate-d6	13.80	166	239697	20.74	ng/ul	0.00
46) Acenaphthylene-d8	14.09	160	281203	20.74	ng/ul	0.00
51) 4-Nitrophenol-d4	14.62	143	32480	15.40	ng/ul	0.00
57) Fluorene-d10	15.39	176	210170	21.06	ng/ul	0.00
62) 4,6-Dinitro-2-methylphenol	15.52	200	38328	19.06	ng/ul	0.00
70) Anthracene-d10	17.24	188	335191	21.21	ng/ul	0.00
76) Pyrene-d10	19.54	212	404111	19.94	ng/ul	0.00
87) Benzo(a)pyrene-d12	23.46	264	373709	21.26	ng/ul	0.00

## Target Compounds

Target Compounds	R.T.	QIon	Response	Conc	Units	Qvalue
2) 1,4-Dioxane	3.29	88	17223	8.62	ng/uL#	94
4) Benzaldehyde	6.90	77	57653	25.46	ng/ul	97
6) Phenol	6.96	94	95669	19.81	ng/ul	98
8) Bis(2-Chloroethyl)ether	7.17	93	72332	19.89	ng/ul	97
10) 2-Chlorophenol	7.32	128	73107	20.25	ng/ul	98
11) 2-Methylphenol	8.20	108	71491	19.15	ng/ul	94
12) 2,2'-oxybis(1-Chloropropan	8.28	45	101470	20.57	ng/ul	99
14) Acetophenone	8.57	105	118505	20.71	ng/ul	98
15) N-Nitroso-di-n-propylamine	8.55	70	59470	19.89	ng/ul	98
16) 4-Methylphenol	8.53	108	78761	19.01	ng/ul	100
17) Hexachloroethane	8.82	117	28209	20.76	ng/ul	89
20) Nitrobenzene	8.95	77	86989	20.84	ng/ul	97
21) Isophorone	9.47	82	165741	20.45	ng/ul	98
23) 2-Nitrophenol	9.66	139	43004	21.15	ng/ul	94
24) 2,4-Dimethylphenol	9.72	107	89411	20.73	ng/ul	98
25) Bis(2-Chloroethoxy)methane	9.95	93	99988	19.81	ng/ul	99
27) 2,4-Dichlorophenol	10.19	162	74266	20.67	ng/ul	99
28) Naphthalene	10.59	128	240809	20.50	ng/ul	99
30) 4-Chloroaniline	10.70	127	96075	22.31	ng/ul	97
31) Hexachlorobutadiene	10.86	225	47316	22.16	ng/ul	99
32) Caprolactam	11.47	113	25652	19.17	ng/ul	97
33) 4-Chloro-3-methylphenol	11.84	107	88700	20.59	ng/ul	98
34) 2-Methylnaphthalene	12.20	142	179834	20.47	ng/ul	98

Data Path : Z:\HPCHEM1\BNA\_M\Data\BM051316\  
 Data File : BM005449.D  
 Acq On : 14 May 2016 04:32  
 Operator : UM/SJ  
 Sample : SSTDCCC020  
 Misc :  
 ALS Vial : 2 Sample Multiplier: 1

Instrument :  
 BNA\_M  
 ClientSampleId :  
 SSTD02035

Quant Time: May 14 05:19:30 2016  
 Quant Method : Z:\HPCHEM1\BNA\_M\METHODS\SOM02.2-EPA-BM050516.M  
 Quant Title : SVOA CALIBRATION  
 QLast Update : Sat May 14 00:15:57 2016  
 Response via : Initial Calibration

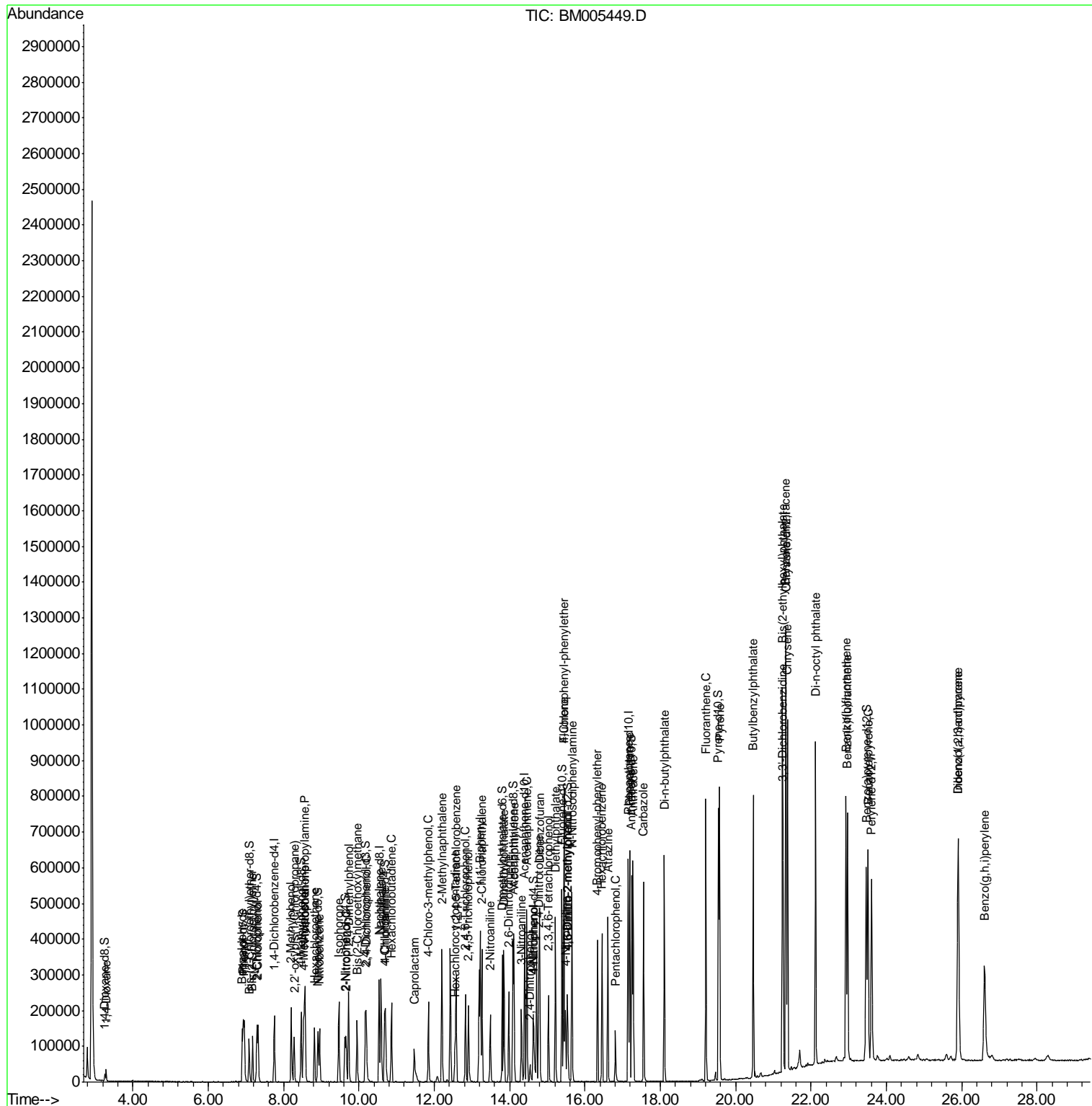
Internal Standards	R.T.	QIon	Response	Conc	Units	Dev(Min)
36) 1,2,4,5-Tetrachlorobenzene	12.57	216	93522	21.32	ng/ul	98
37) Hexachlorocyclopentadiene	12.55	237	28620	12.77	ng/ul	94
38) 2,4,6-Trichlorophenol	12.82	196	59537	20.38	ng/ul	96
39) 2,4,5-Trichlorophenol	12.90	196	64047	19.76	ng/ul	96
40) 1,1'-Biphenyl	13.22	154	234764	20.55	ng/ul	99
41) 2-Chloronaphthalene	13.26	162	178858	20.71	ng/ul	98
42) 2-Nitroaniline	13.48	65	57295	21.55	ng/ul	97
44) Dimethylphthalate	13.85	163	240553	20.83	ng/ul	100
45) 2,6-Dinitrotoluene	13.97	165	48992	21.51	ng/ul	92
47) Acenaphthylene	14.12	152	294262	20.52	ng/ul	100
48) 3-Nitroaniline	14.31	138	51867	21.36	ng/ul	92
49) Acenaphthene	14.46	153	195609	20.70	ng/ul	99
50) 2,4-Dinitrophenol	14.53	184	16013	12.22	ng/ul	98
52) 4-Nitrophenol	14.64	109	28840	16.44	ng/ul	97
53) Dibenzofuran	14.79	168	284548	20.75	ng/ul	99
54) 2,4-Dinitrotoluene	14.77	165	75120	22.12	ng/ul	99
55) 2,3,4,6-Tetrachlorophenol	15.03	232	51448	18.67	ng/ul#	93
56) Diethylphthalate	15.22	149	245036	21.00	ng/ul	99
58) Fluorene	15.45	166	227902	21.26	ng/ul	100
59) 4-Chlorophenyl-phenylether	15.43	204	113964	21.45	ng/ul	97
60) 4-Nitroaniline	15.48	138	50381	19.58	ng/ul	94
63) 4,6-Dinitro-2-methylphenol	15.54	198	38851	18.39	ng/ul#	92
64) N-Nitrosodiphenylamine	15.65	169	203081	20.75	ng/ul	99
65) 4-Bromophenyl-phenylether	16.33	248	73526	21.45	ng/ul	96
66) Hexachlorobenzene	16.45	284	82959	21.58	ng/ul	96
67) Atrazine	16.60	200	80488	22.53	ng/ul	99
68) Pentachlorophenol	16.80	266	30436	14.25	ng/ul	95
69) Phenanthrene	17.19	178	390092	20.75	ng/ul	100
71) Anthracene	17.27	178	393919	21.02	ng/ul	99
72) Carbazole	17.55	167	373723	22.67	ng/ul	99
73) Di-n-butylphthalate	18.10	149	442673	22.01	ng/ul	100
74) Fluoranthene	19.20	202	495696	23.80	ng/ul	99
77) Pyrene	19.57	202	509966	20.02	ng/ul	99
78) Butylbenzylphthalate	20.46	149	224692	21.24	ng/ul	99
79) 3,3'-Dichlorobenzidine	21.26	252	174929	22.16	ng/ul	99
80) Benzo(a)anthracene	21.32	228	524901	20.78	ng/ul	99
81) Bis(2-ethylhexyl)phthalate	21.24	149	331837	22.59	ng/ul#	97
82) Chrysene	21.37	228	498017	20.78	ng/ul	100
84) Di-n-octyl phthalate	22.12	149	585763	25.26	ng/ul	99
85) Benzo(b)fluoranthene	22.92	252	510606	22.00	ng/ul	98
86) Benzo(k)fluoranthene	22.97	252	490820	22.46	ng/ul	99
88) Benzo(a)pyrene	23.51	252	468436	21.34	ng/ul	99
89) Indeno(1,2,3-cd)pyrene	25.90	276	448822	18.74	ng/ul	97
90) Dibenzo(a,h)anthracene	25.90	278	381581	19.04	ng/ul	98
91) Benzo(g,h,i)perylene	26.60	276	363938	17.94	ng/ul	97

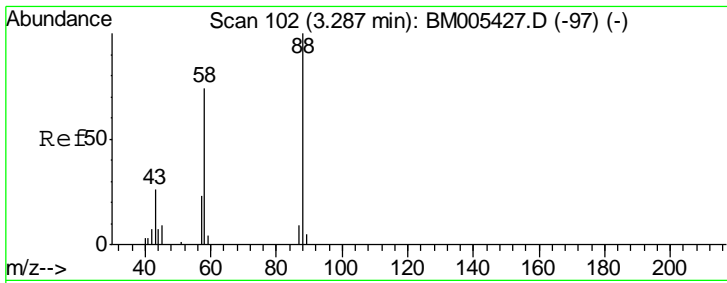
(#) = qualifier out of range (m) = manual integration (+) = signals summed

Data Path : Z:\HPCHEM1\BNA\_M\Data\BM051316\  
 Data File : BM005449.D  
 Acq On : 14 May 2016 04:32  
 Operator : UM/SJ  
 Sample : SSTDCCC020  
 Misc :  
 ALS Vial : 2 Sample Multiplier: 1

Instrument :  
 BNA\_M  
 Client Sampled :  
 SSTD02035

Quant Time: May 14 05:19:30 2016  
 Quant Method : Z:\HPCHEM1\BNA\_M\METHODS\SOM02.2-EPA-BM050516.M  
 Quant Title : SVOA CALIBRATION  
 QLast Update : Sat May 14 00:15:57 2016  
 Response via : Initial Calibration

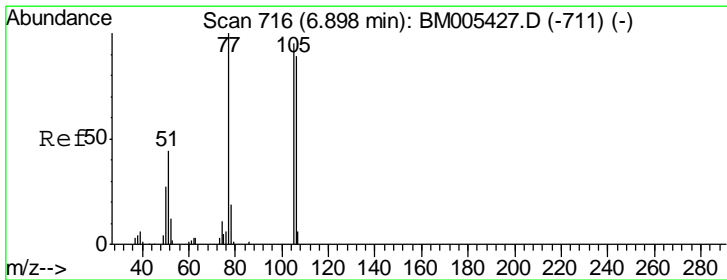
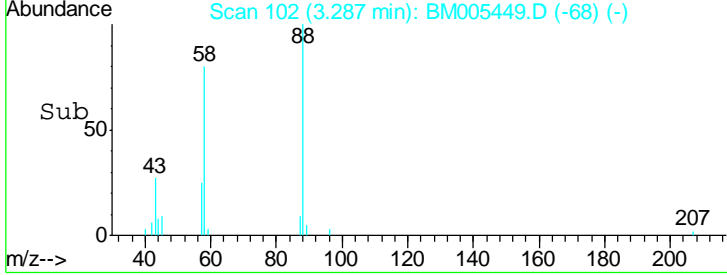
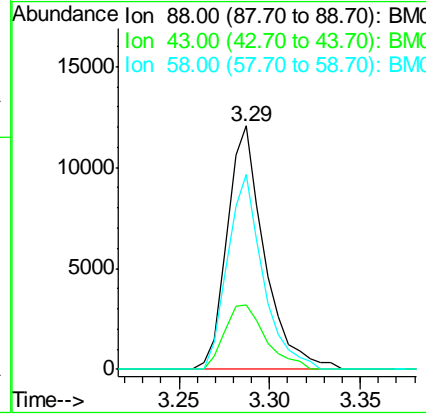
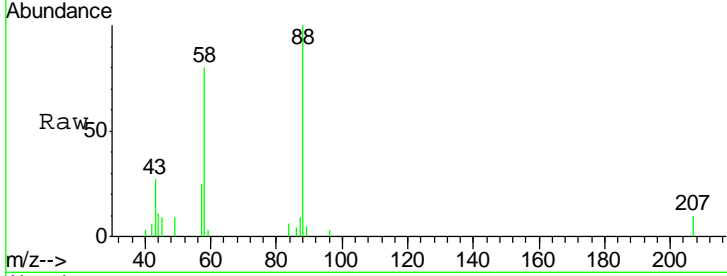




#2  
 1,4-Dioxane  
 Concen: 8.62 ng/uL  
 RT: 3.29 min Scan# 102  
 Delta R.T. 0.00 min  
 Lab File: BM005449.D  
 Acq: 14 May 2016 04:32

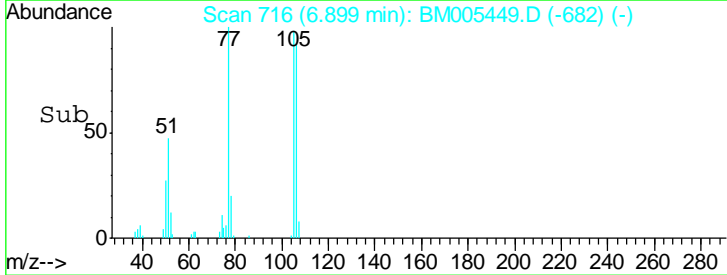
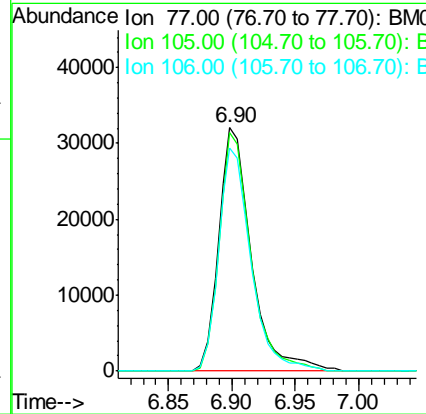
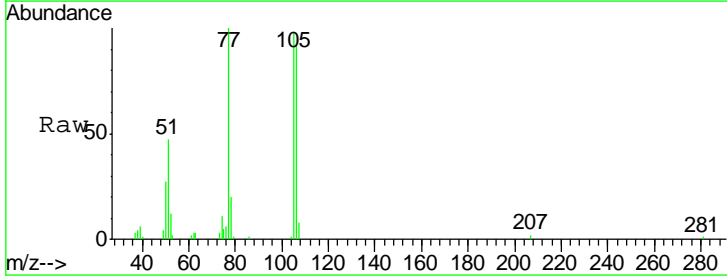
**Instrument :**  
 BNA\_M  
**ClientSampled :**  
 SSTD02035

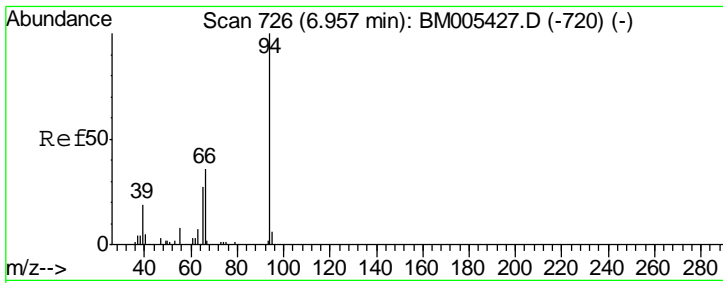
Tgt Ion	Resp	Lower	Upper
88	17223		
43	29.2	19.3	28.9#
58	76.2	57.9	86.9



#4  
 Benzaldehyde  
 Concen: 25.46 ng/ul  
 RT: 6.90 min Scan# 716  
 Delta R.T. 0.00 min  
 Lab File: BM005449.D  
 Acq: 14 May 2016 04:32

Tgt Ion	Resp	Lower	Upper
77	57653		
105	98.1	77.6	116.4
106	91.6	77.9	116.9

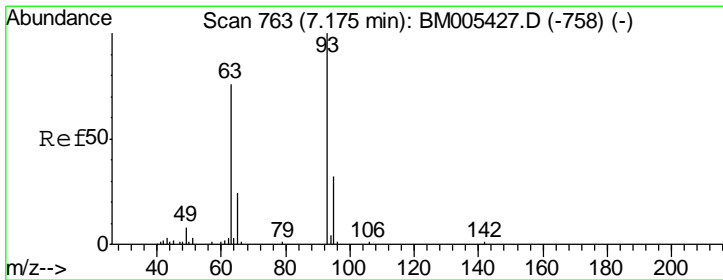
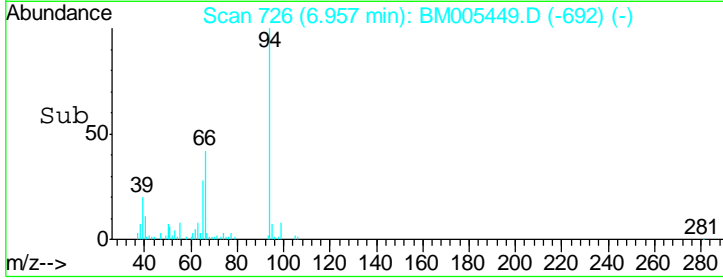
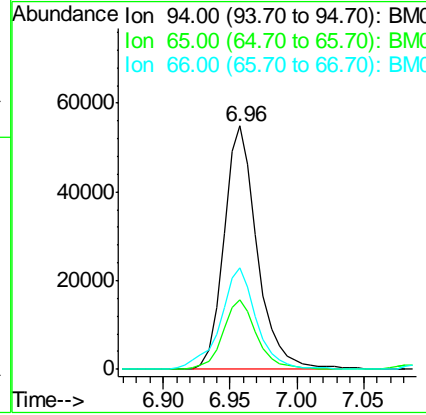
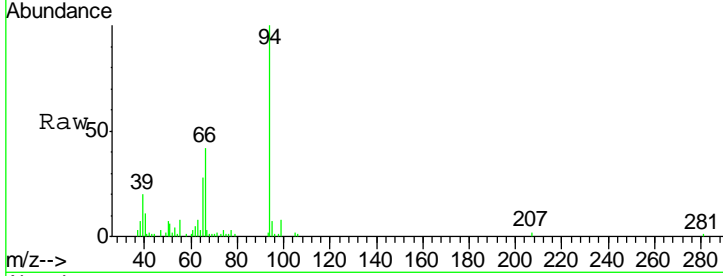




#6  
 Phenol  
 Concen: 19.81 ng/ul  
 RT: 6.96 min Scan# 726  
 Delta R.T. 0.00 min  
 Lab File: BM005449.D  
 Acq: 14 May 2016 04:32

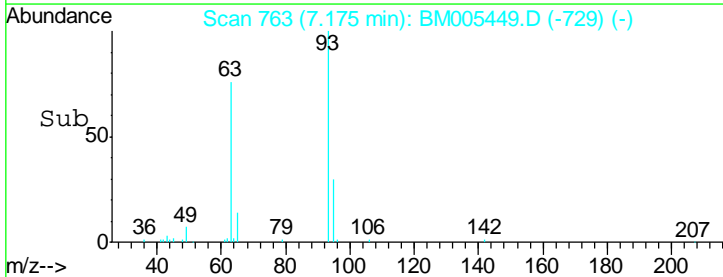
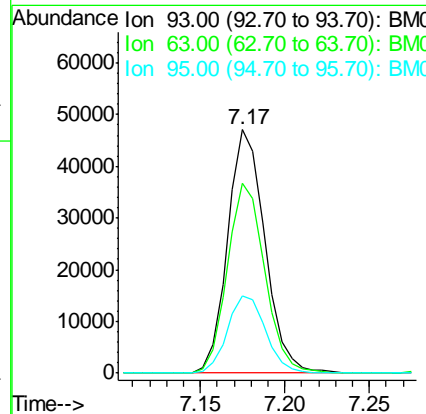
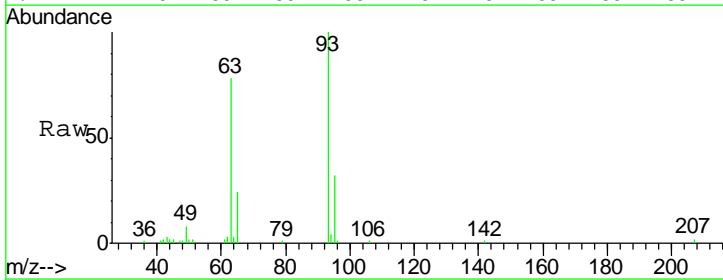
Instrument :  
 BNA\_M  
 ClientSampled :  
 SST02035

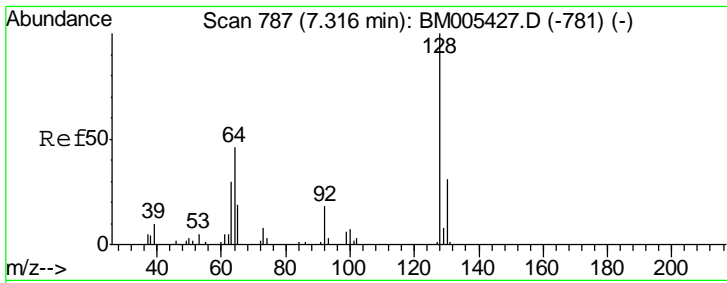
Tgt Ion	Resp	Lower	Upper
94	100		
65	28.4	22.7	34.1
66	42.0	31.7	47.5



#8  
 Bis(2-Chloroethyl)ether  
 Concen: 19.89 ng/ul  
 RT: 7.17 min Scan# 763  
 Delta R.T. 0.00 min  
 Lab File: BM005449.D  
 Acq: 14 May 2016 04:32

Tgt Ion	Resp	Lower	Upper
93	100		
63	77.8	60.6	90.8
95	31.9	24.2	36.4

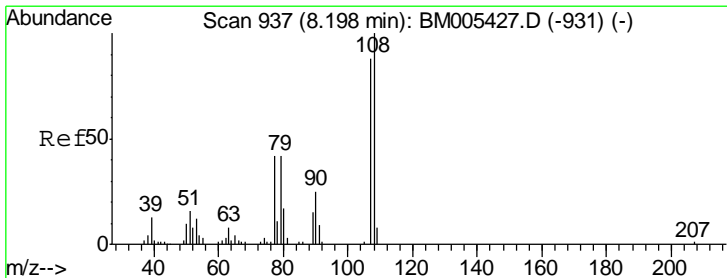
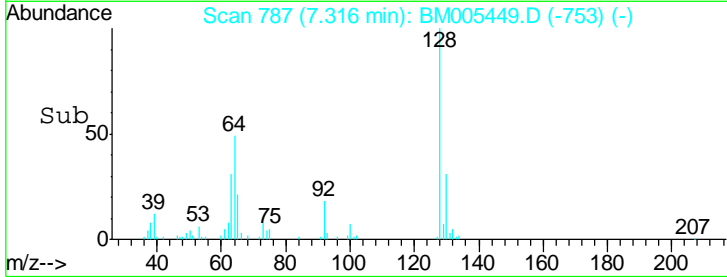
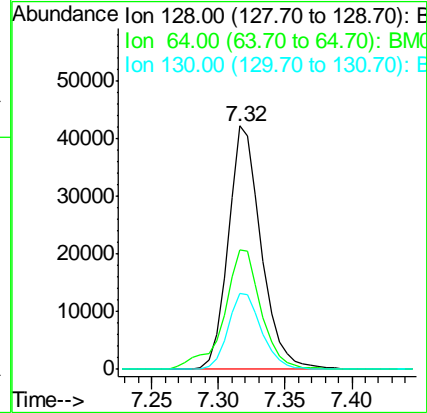
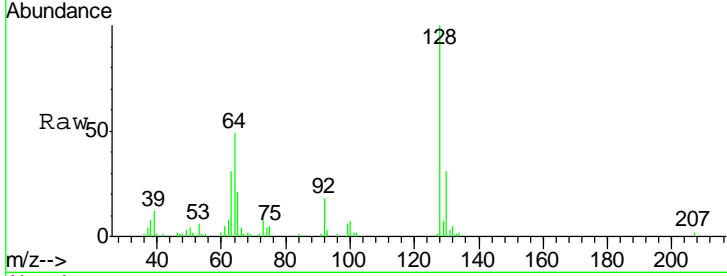




#10  
 2-Chlorophenol  
 Concen: 20.25 ng/ul  
 RT: 7.32 min Scan# 787  
 Delta R.T. 0.00 min  
 Lab File: BM005449.D  
 Acq: 14 May 2016 04:32

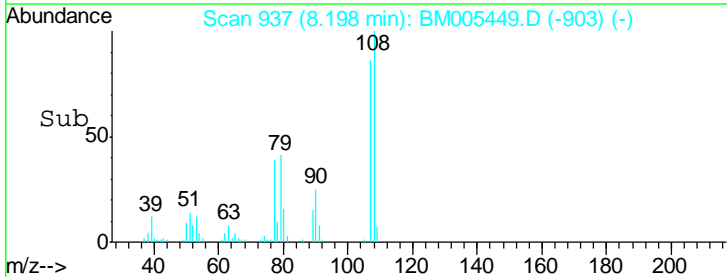
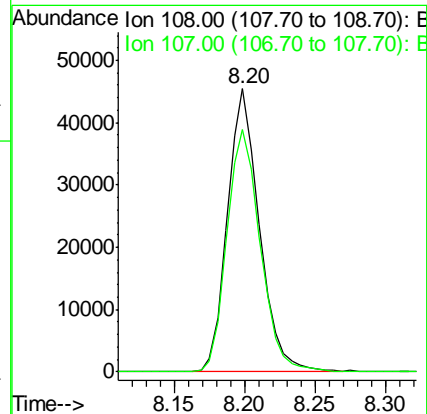
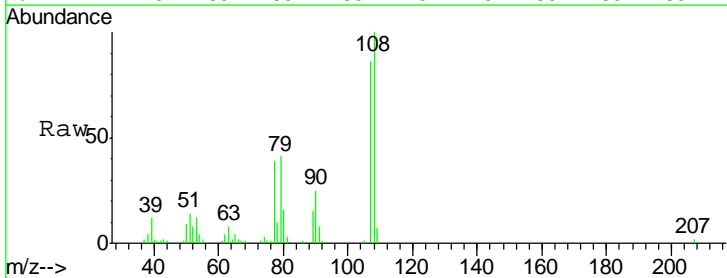
Instrument :  
 BNA\_M  
 ClientSampled :  
 SSTD02035

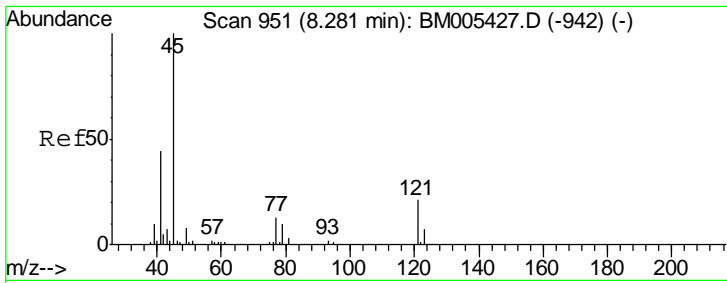
Tgt Ion	Resp	Lower	Upper
128	73107		
64	49.0	37.8	56.8
130	31.3	24.9	37.3



#11  
 2-Methylphenol  
 Concen: 19.15 ng/ul  
 RT: 8.20 min Scan# 937  
 Delta R.T. 0.00 min  
 Lab File: BM005449.D  
 Acq: 14 May 2016 04:32

Tgt Ion	Resp	Lower	Upper
108	71491		
107	85.7	73.4	110.0

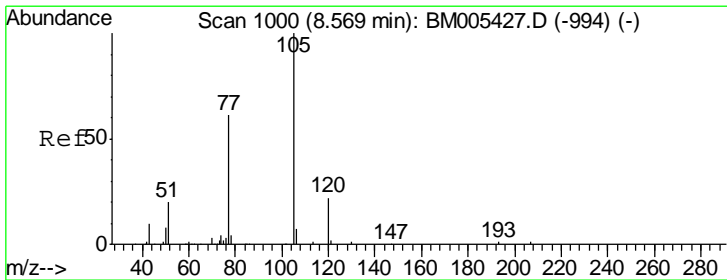
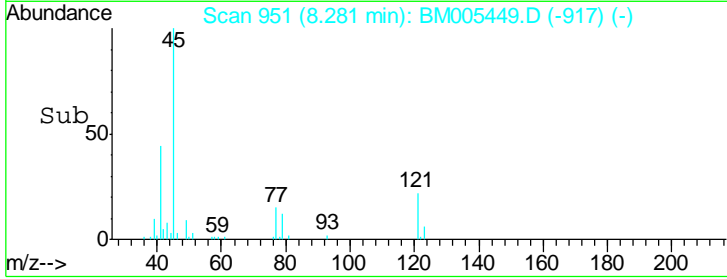
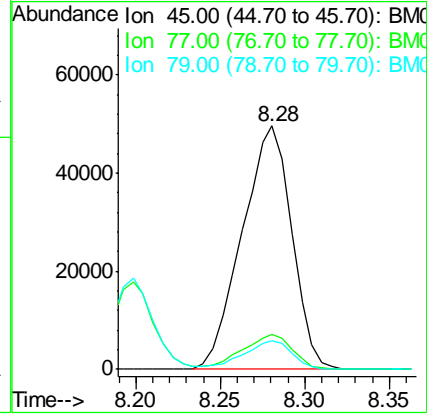
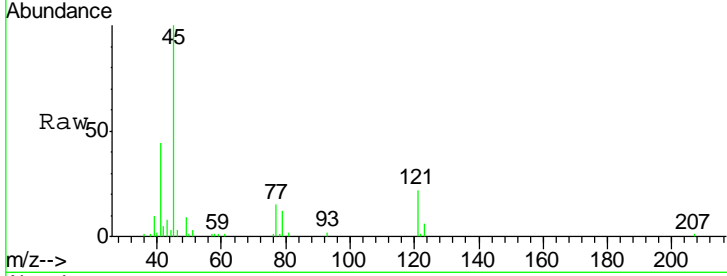




#12  
 2,2'-oxybis(1-Chloropropane)  
 Concen: 20.57 ng/ul  
 RT: 8.28 min Scan# 951  
 Delta R.T. 0.00 min  
 Lab File: BM005449.D  
 Acq: 14 May 2016 04:32

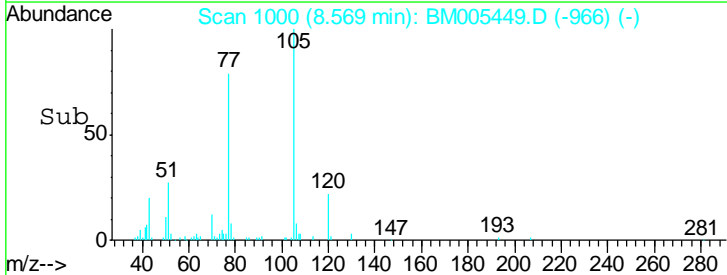
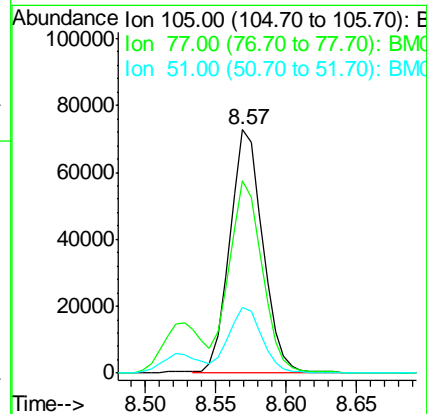
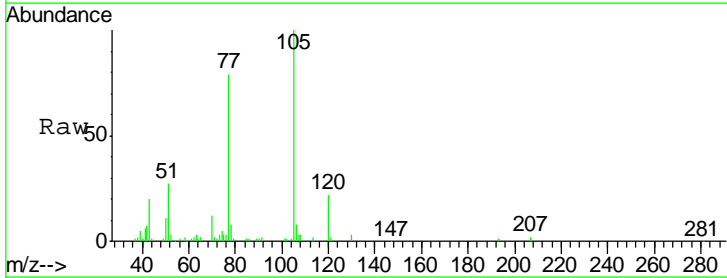
Instrument :  
 BNA\_M  
 ClientSampled :  
 SSTD02035

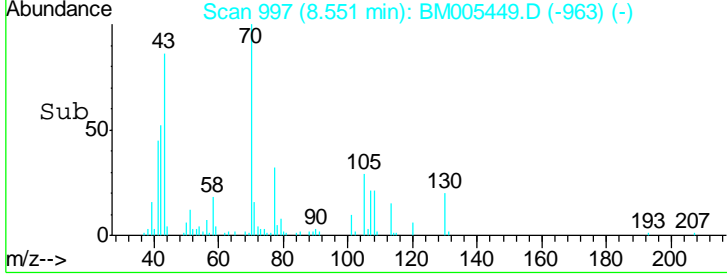
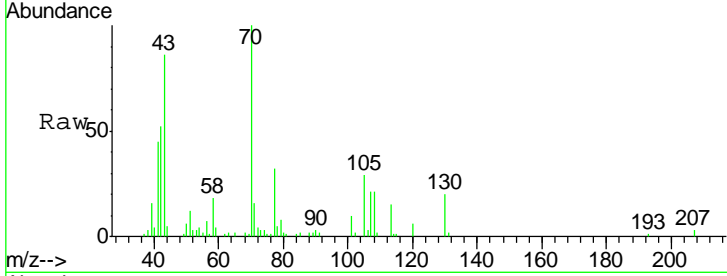
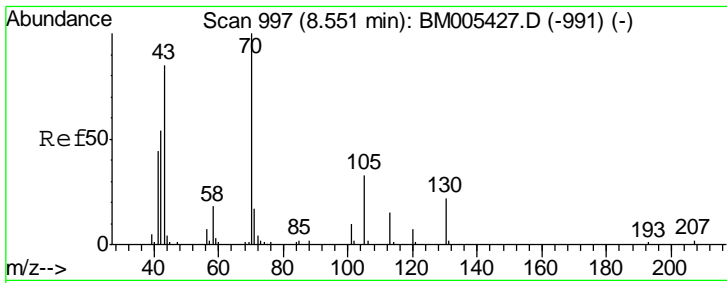
Tgt Ion	Resp	Lower	Upper
45	101470		
77	14.6	12.1	18.1
79	11.7	9.0	13.4



#14  
 Acetophenone  
 Concen: 20.71 ng/ul  
 RT: 8.57 min Scan# 1000  
 Delta R.T. 0.00 min  
 Lab File: BM005449.D  
 Acq: 14 May 2016 04:32

Tgt Ion	Resp	Lower	Upper
105	118505		
77	79.1	61.2	91.8
51	26.9	21.2	31.8

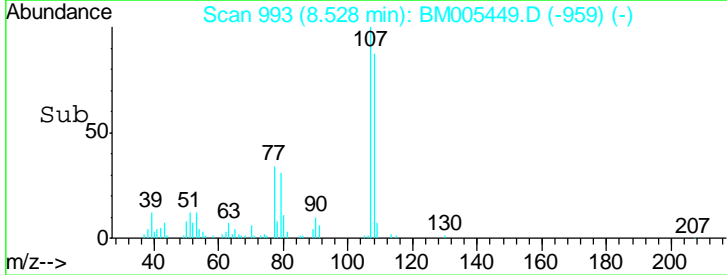
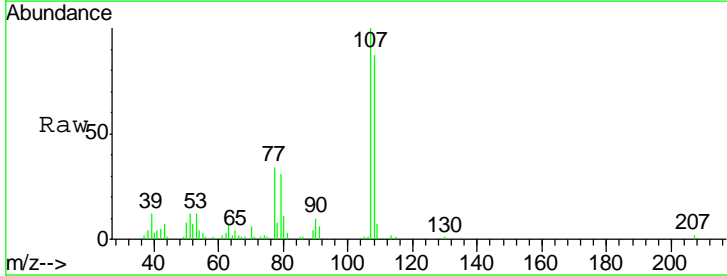
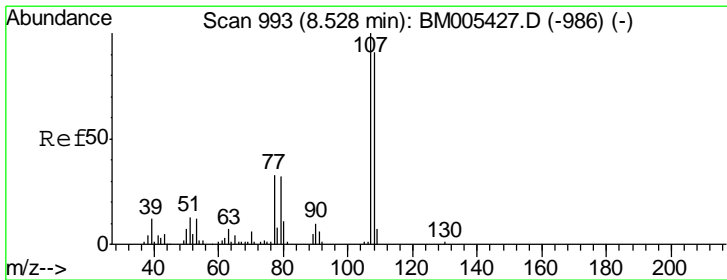
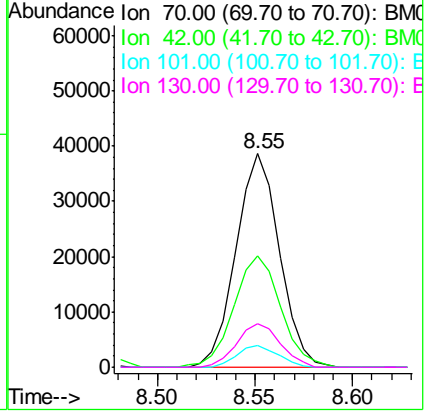




#15  
 N-Nitroso-di-n-propylamine  
 Concen: 19.89 ng/ul  
 RT: 8.55 min Scan# 997  
 Delta R.T. 0.00 min  
 Lab File: BM005449.D  
 Acq: 14 May 2016 04:32

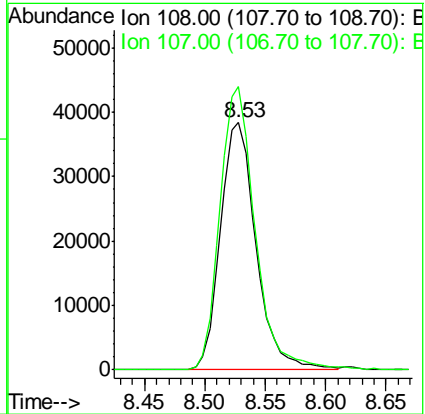
**Instrument :**  
 BNA\_M  
**ClientSampleId :**  
 SSTD02035

Tgt Ion	Resp	Lower	Upper
70	100		
42	52.3	42.8	64.2
101	10.0	7.8	11.6
130	20.5	15.7	23.5

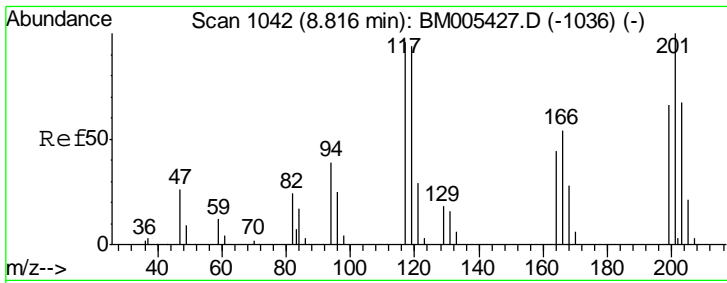


#16  
 4-Methylphenol  
 Concen: 19.01 ng/ul  
 RT: 8.53 min Scan# 993  
 Delta R.T. 0.00 min  
 Lab File: BM005449.D  
 Acq: 14 May 2016 04:32

Tgt Ion	Resp	Lower	Upper
108	100		
107	114.4	91.1	136.7



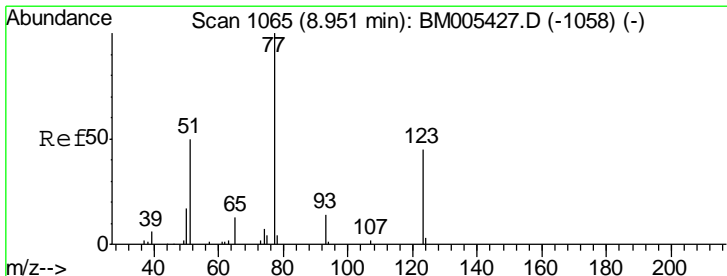
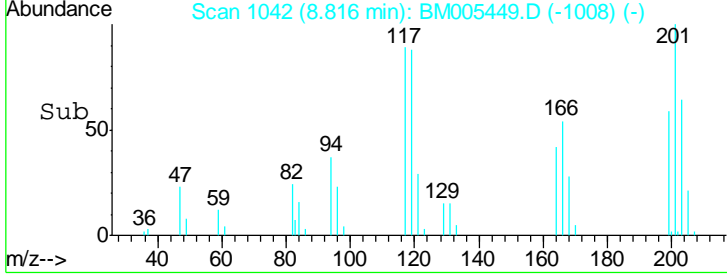
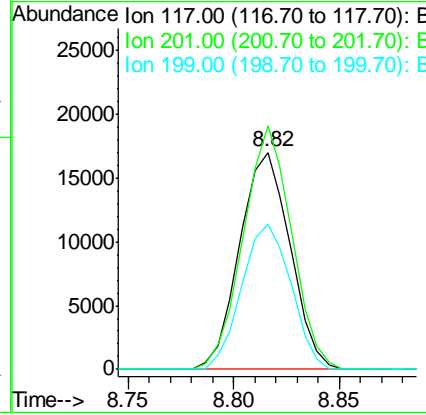
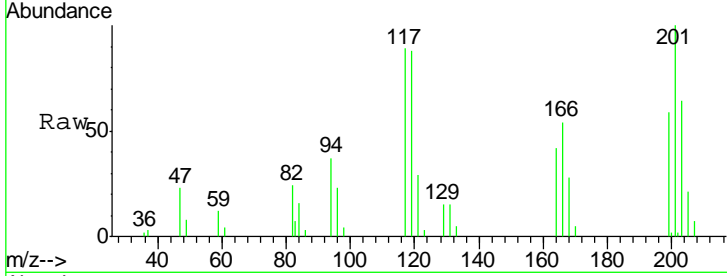




#17  
 Hexachloroethane  
 Concen: 20.76 ng/ul  
 RT: 8.82 min Scan# 1042  
 Delta R.T. 0.00 min  
 Lab File: BM005449.D  
 Acq: 14 May 2016 04:32

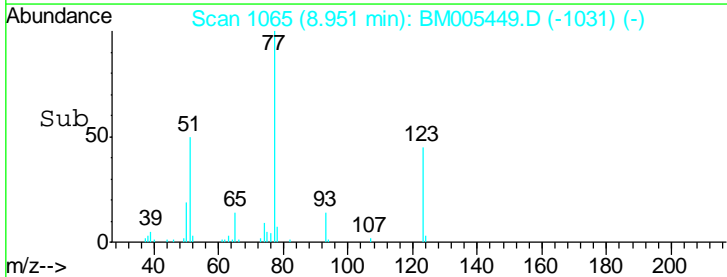
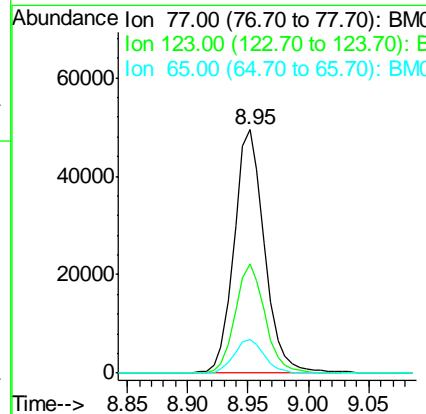
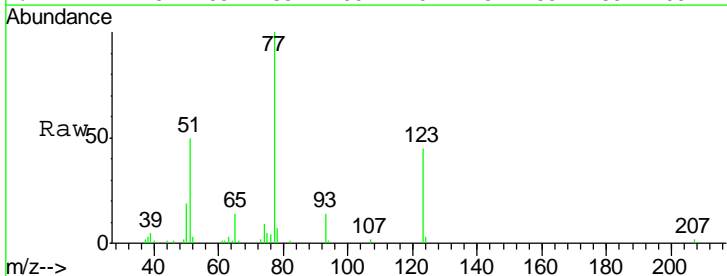
**Instrument :**  
 BNA\_M  
**ClientSampled :**  
 SSTD02035

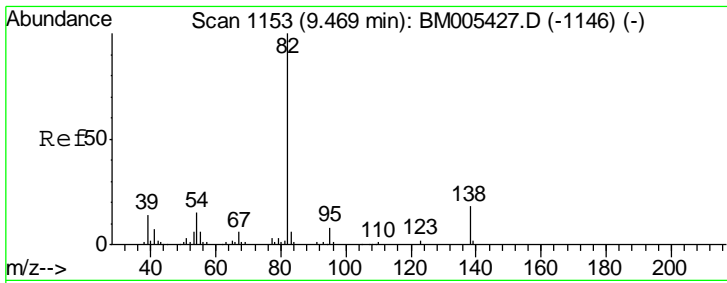
Tgt Ion	Resp	Lower	Upper
117	100		
201	112.0	78.1	117.1
199	66.6	50.2	75.2



#20  
 Nitrobenzene  
 Concen: 20.84 ng/ul  
 RT: 8.95 min Scan# 1065  
 Delta R.T. 0.00 min  
 Lab File: BM005449.D  
 Acq: 14 May 2016 04:32

Tgt Ion	Resp	Lower	Upper
77	100		
123	44.9	34.1	51.1
65	13.7	11.0	16.4

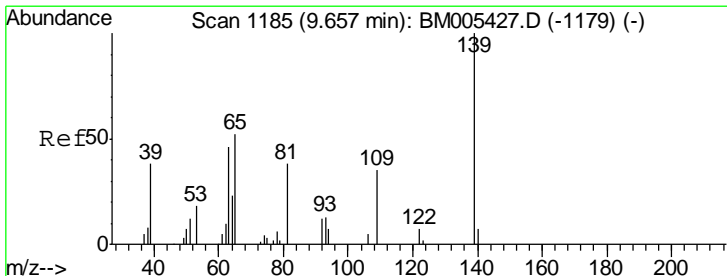
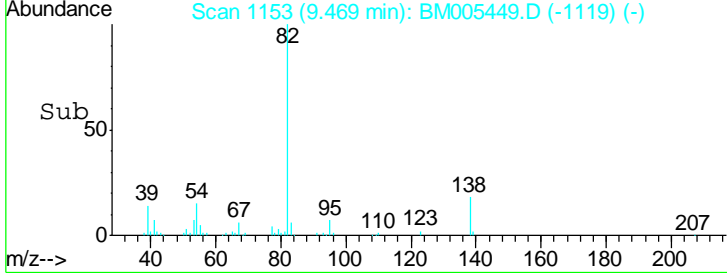
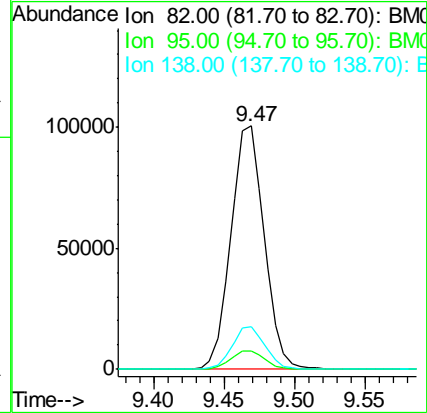
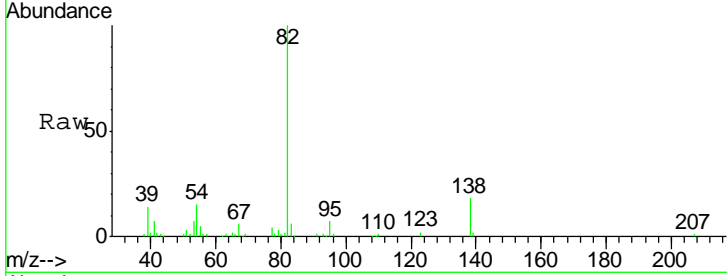




#21  
 Isophorone  
 Concen: 20.45 ng/ul  
 RT: 9.47 min Scan# 1153  
 Delta R.T. 0.00 min  
 Lab File: BM005449.D  
 Acq: 14 May 2016 04:32

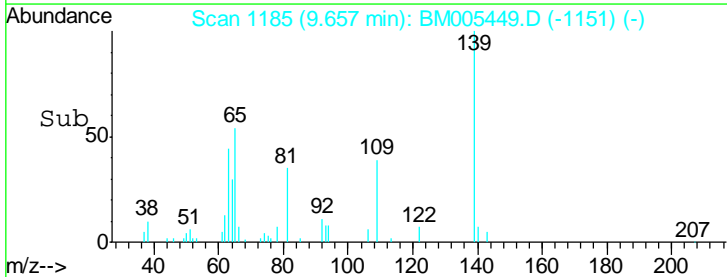
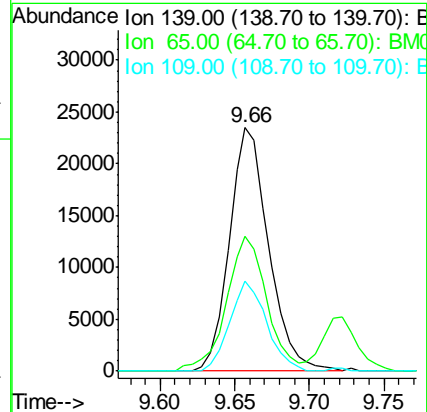
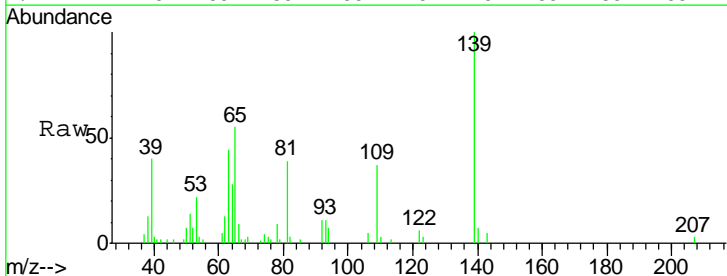
**Instrument :**  
 BNA\_M  
**ClientSampled :**  
 SSTD02035

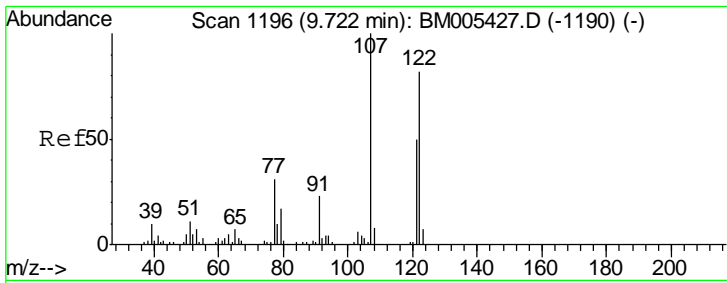
Tgt Ion	Resp	Lower	Upper
82	165741		
95	7.3	5.4	8.0
138	17.7	13.4	20.2



#23  
 2-Nitrophenol  
 Concen: 21.15 ng/ul  
 RT: 9.66 min Scan# 1185  
 Delta R.T. 0.00 min  
 Lab File: BM005449.D  
 Acq: 14 May 2016 04:32

Tgt Ion	Resp	Lower	Upper
139	43004		
65	55.4	41.7	62.5
109	36.8	26.2	39.4

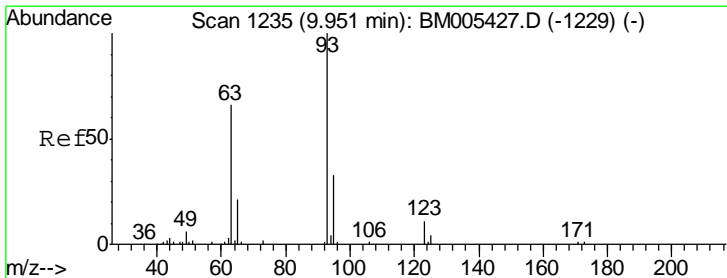
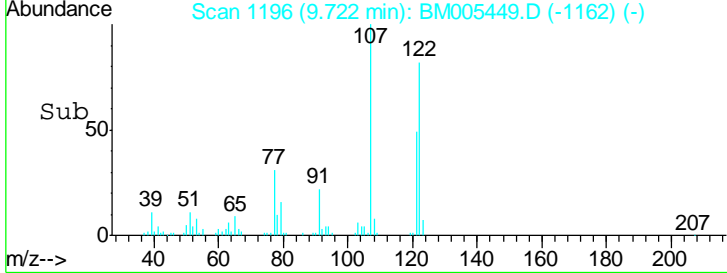
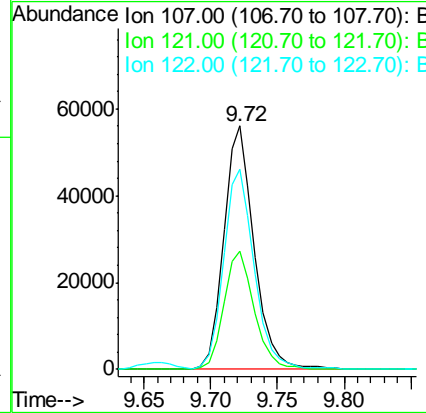
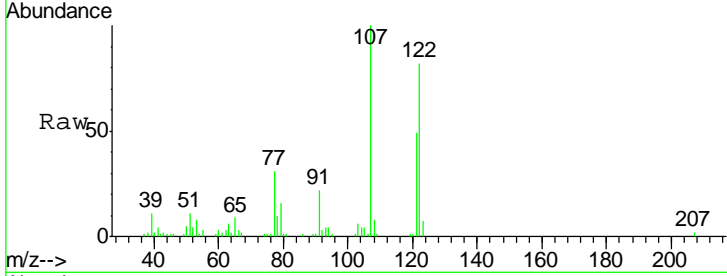




#24  
 2,4-Dimethylphenol  
 Concen: 20.73 ng/ul  
 RT: 9.72 min Scan# 1196  
 Delta R.T. 0.00 min  
 Lab File: BM005449.D  
 Acq: 14 May 2016 04:32

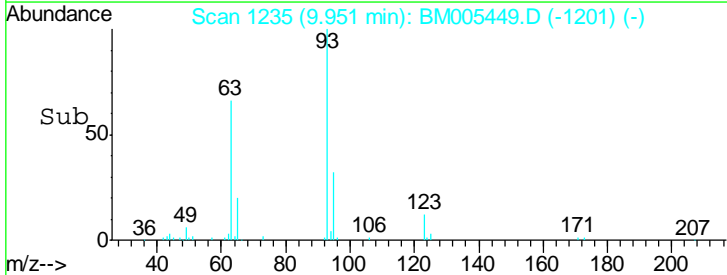
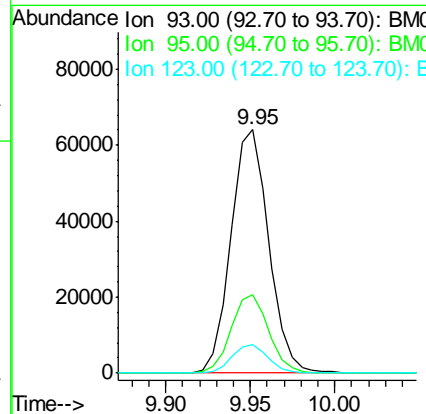
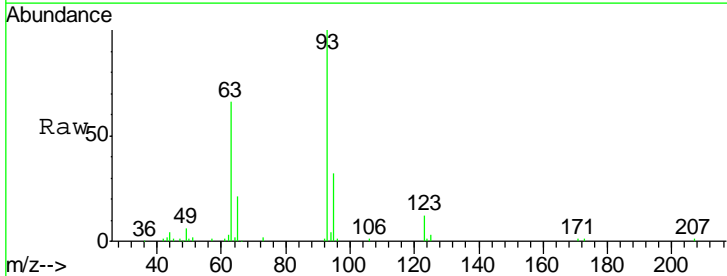
Instrument :  
 BNA\_M  
 ClientSampled :  
 SSTD02035

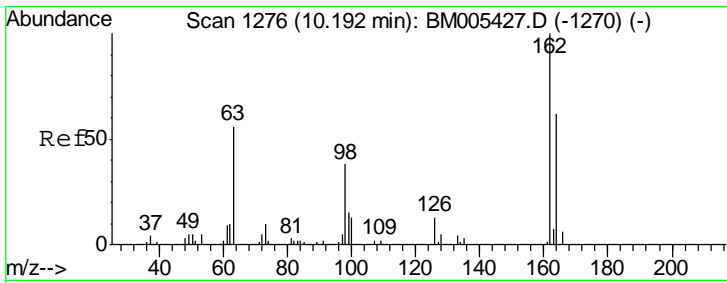
Tgt Ion	Resp	Lower	Upper
107	89411		
107	100		
121	48.5	39.1	58.7
122	82.4	67.8	101.6



#25  
 Bis(2-Chloroethoxy)methane  
 Concen: 19.81 ng/ul  
 RT: 9.95 min Scan# 1235  
 Delta R.T. 0.00 min  
 Lab File: BM005449.D  
 Acq: 14 May 2016 04:32

Tgt Ion	Resp	Lower	Upper
93	99988		
93	100		
95	32.2	25.2	37.8
123	11.7	9.0	13.6

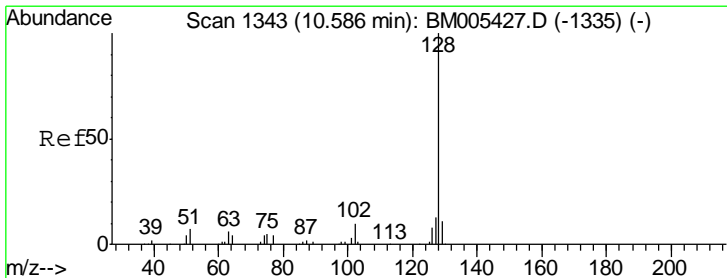
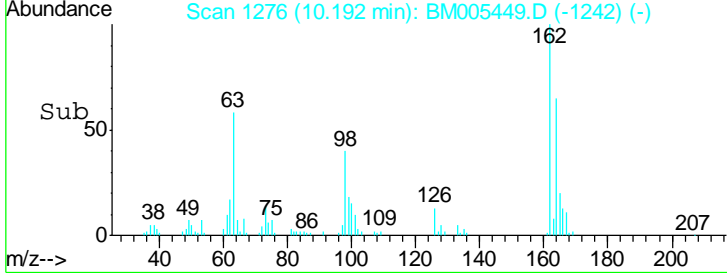
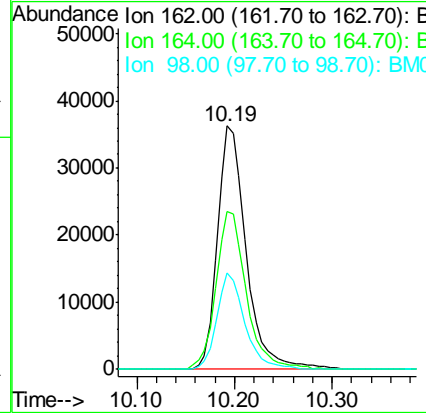
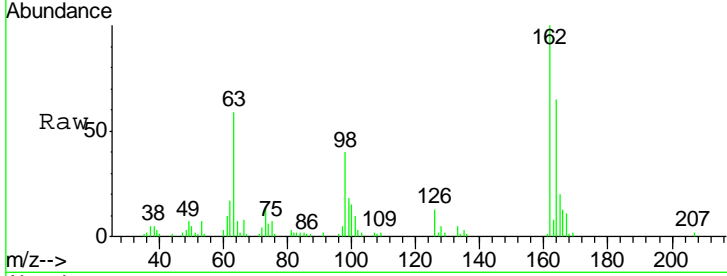




#27  
 2,4-Dichlorophenol  
 Concen: 20.67 ng/ul  
 RT: 10.19 min Scan# 1276  
 Delta R.T. 0.00 min  
 Lab File: BM005449.D  
 Acq: 14 May 2016 04:32

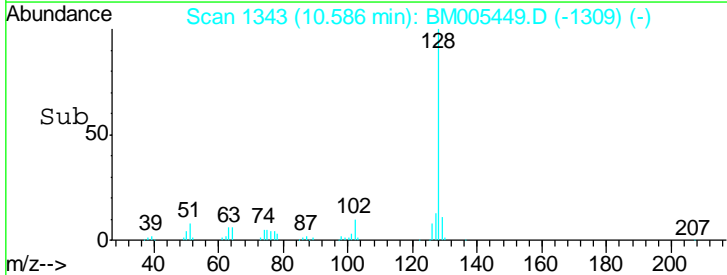
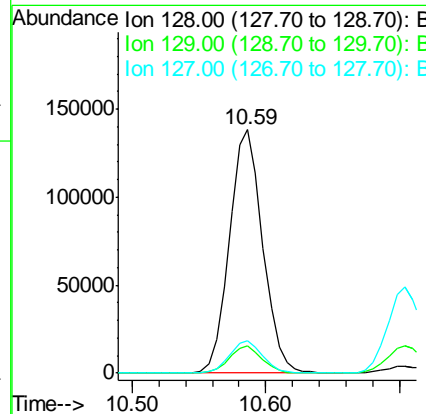
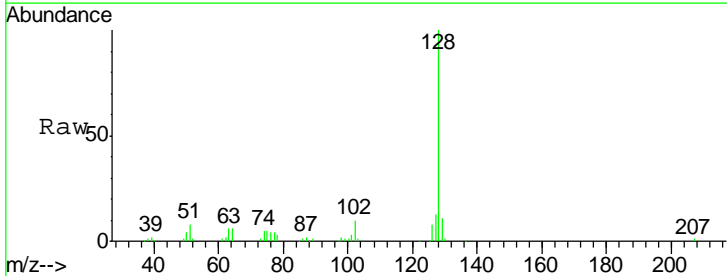
Instrument :  
 BNA\_M  
 ClientSampled :  
 SSTD02035

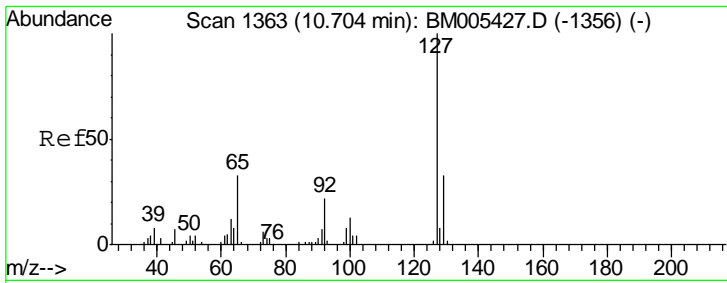
Tgt Ion	Resp	Lower	Upper
162	100		
164	65.1	51.5	77.3
98	39.6	31.2	46.8



#28  
 Naphthalene  
 Concen: 20.50 ng/ul  
 RT: 10.59 min Scan# 1343  
 Delta R.T. 0.00 min  
 Lab File: BM005449.D  
 Acq: 14 May 2016 04:32

Tgt Ion	Resp	Lower	Upper
128	100		
129	11.3	8.4	12.6
127	13.1	10.8	16.2

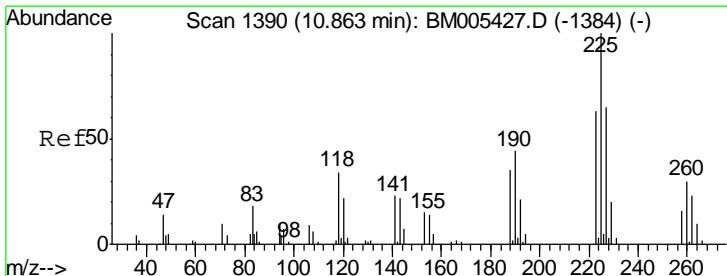
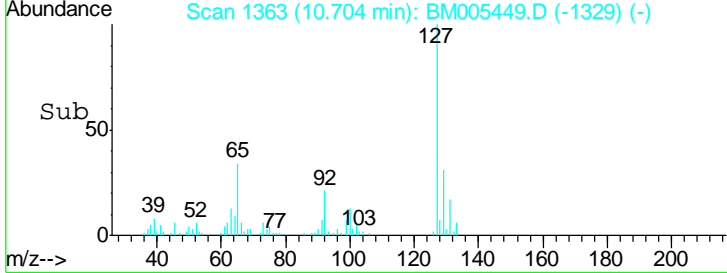
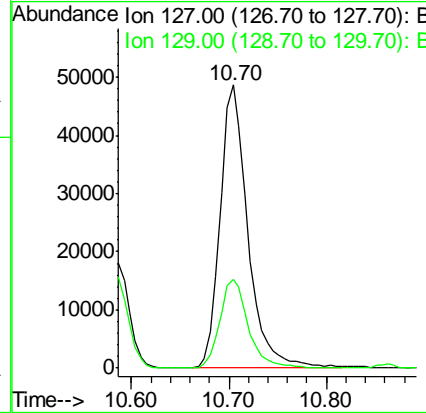
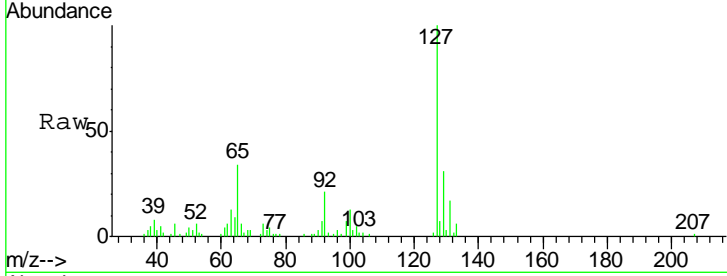




#30  
 4-Chloroaniline  
 Concen: 22.31 ng/ul  
 RT: 10.70 min Scan# 1363  
 Delta R.T. 0.00 min  
 Lab File: BM005449.D  
 Acq: 14 May 2016 04:32

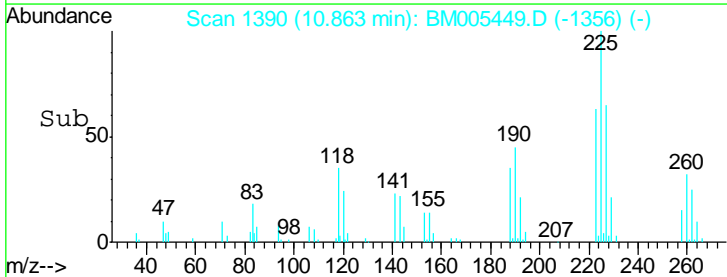
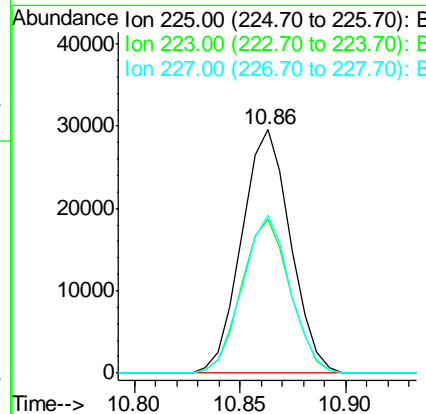
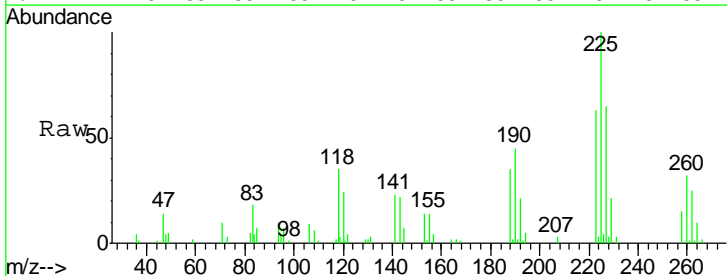
Instrument :  
 BNA\_M  
 ClientSampled :  
 SSTD02035

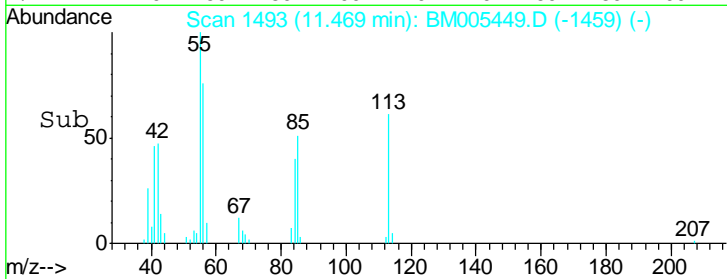
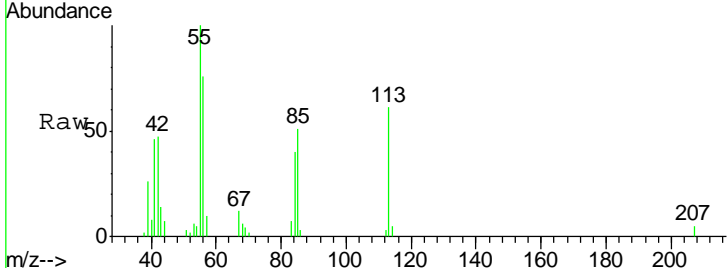
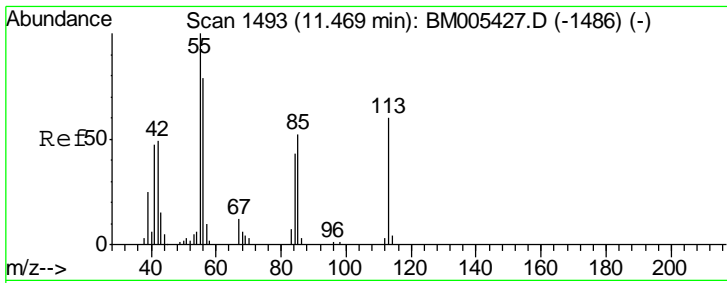
Tgt Ion:127 Resp: 96075  
 Ion Ratio Lower Upper  
 127 100  
 129 31.5 26.5 39.7



#31  
 Hexachlorobutadiene  
 Concen: 22.16 ng/ul  
 RT: 10.86 min Scan# 1390  
 Delta R.T. 0.00 min  
 Lab File: BM005449.D  
 Acq: 14 May 2016 04:32

Tgt Ion:225 Resp: 47316  
 Ion Ratio Lower Upper  
 225 100  
 223 63.3 51.5 77.3  
 227 64.7 51.8 77.6

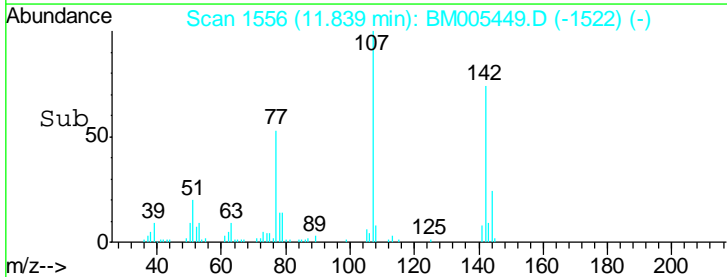
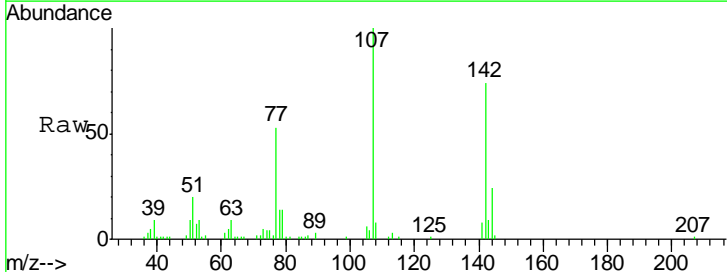
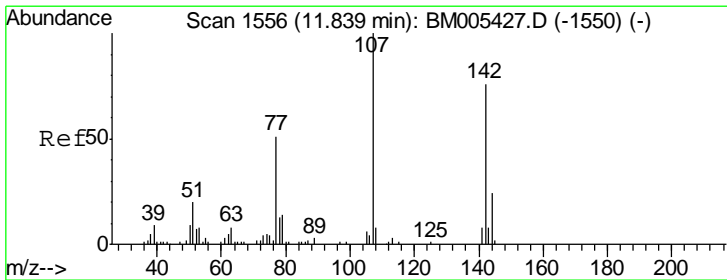
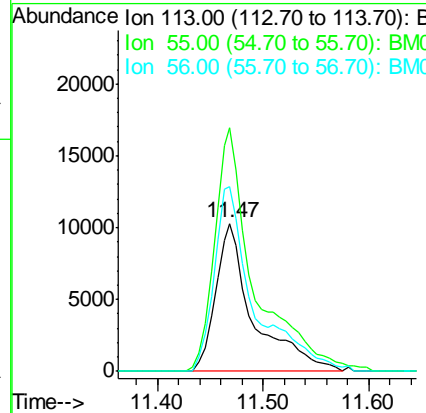




#32  
 Caprolactam  
 Concen: 19.17 ng/ul  
 RT: 11.47 min Scan# 1493  
 Delta R.T. 0.00 min  
 Lab File: BM005449.D  
 Acq: 14 May 2016 04:32

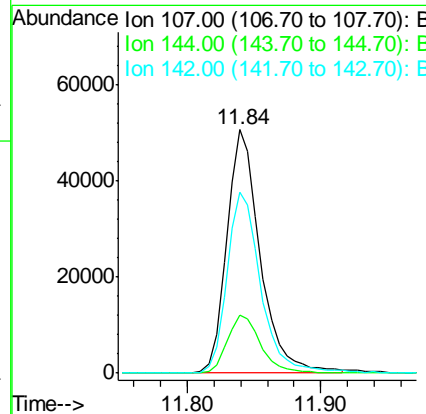
Instrument :  
 BNA\_M  
 ClientSampleId :  
 SSTD02035

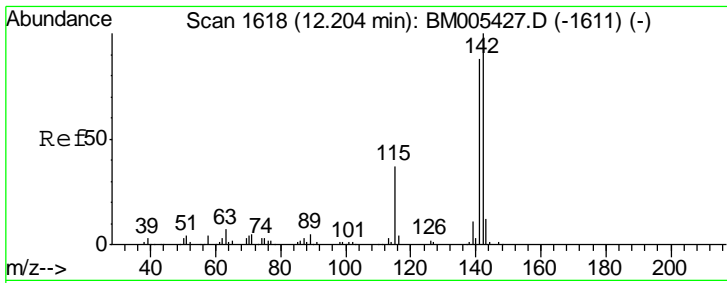
Tgt Ion	Resp	Lower	Upper
113	100		
55	165.0	134.6	201.8
56	125.1	96.6	145.0



#33  
 4-Chloro-3-methylphenol  
 Concen: 20.59 ng/ul  
 RT: 11.84 min Scan# 1556  
 Delta R.T. 0.00 min  
 Lab File: BM005449.D  
 Acq: 14 May 2016 04:32

Tgt Ion	Resp	Lower	Upper
107	100		
144	23.7	19.3	28.9
142	74.2	60.8	91.2

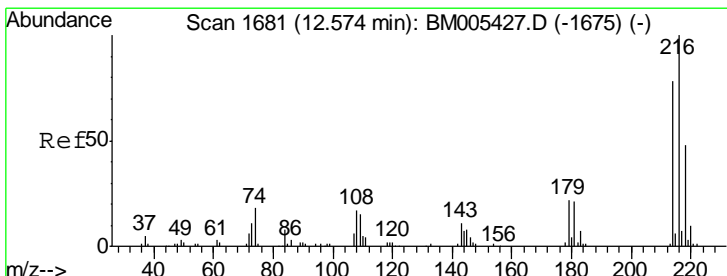
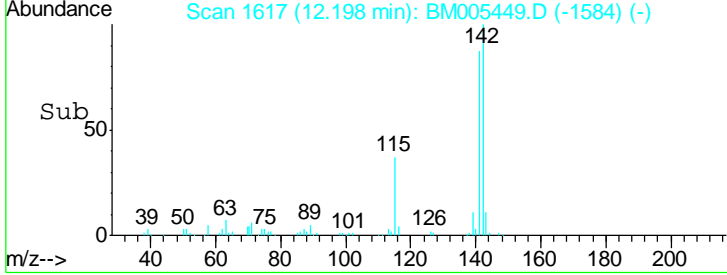
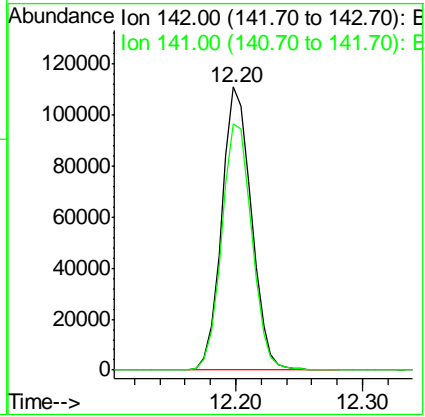
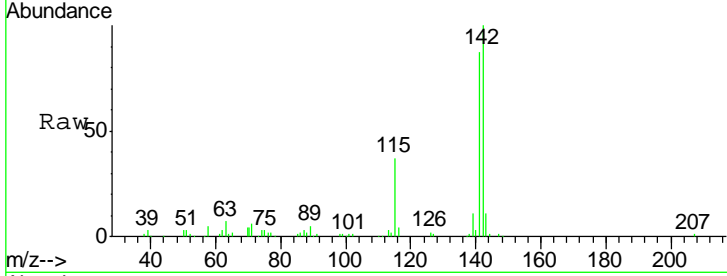




#34  
 2-Methylnaphthalene  
 Concen: 20.47 ng/ul  
 RT: 12.20 min Scan# 1617  
 Delta R.T. -0.01 min  
 Lab File: BM005449.D  
 Acq: 14 May 2016 04:32

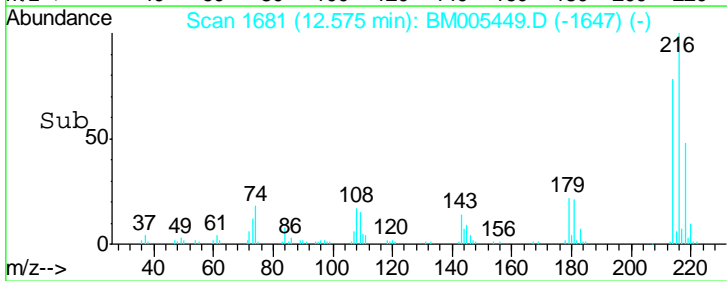
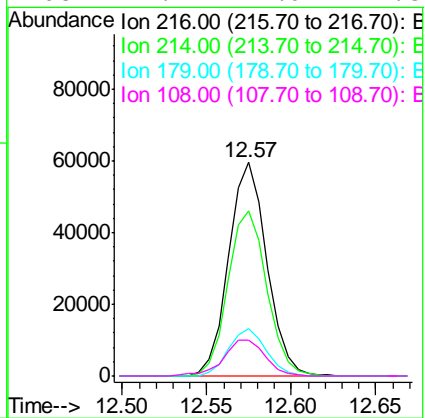
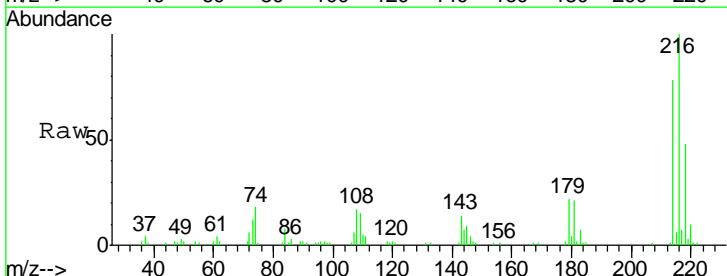
Instrument :  
 BNA\_M  
 ClientSampled :  
 SST02035

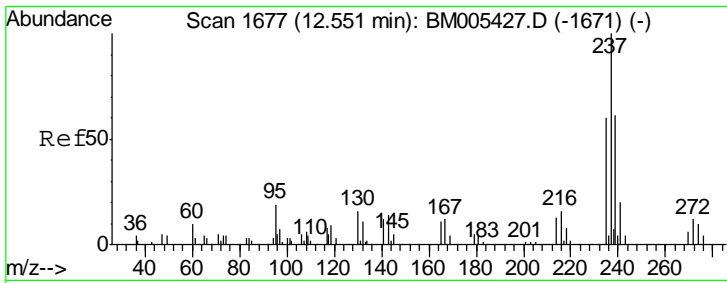
Tgt Ion:142 Resp: 179834  
 Ion Ratio Lower Upper  
 142 100  
 141 87.2 71.3 106.9



#36  
 1,2,4,5-Tetrachlorobenzene  
 Concen: 21.32 ng/ul  
 RT: 12.57 min Scan# 1681  
 Delta R.T. 0.00 min  
 Lab File: BM005449.D  
 Acq: 14 May 2016 04:32

Tgt Ion:216 Resp: 93522  
 Ion Ratio Lower Upper  
 216 100  
 214 77.6 63.4 95.0  
 179 22.3 17.4 26.0  
 108 17.1 14.9 22.3

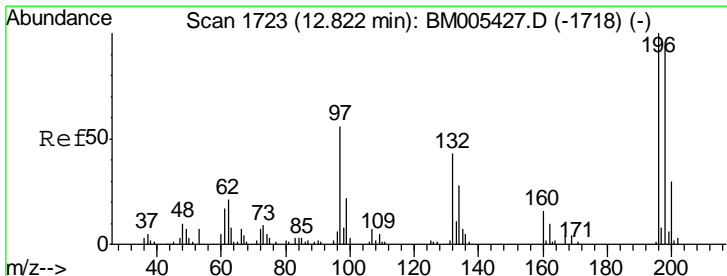
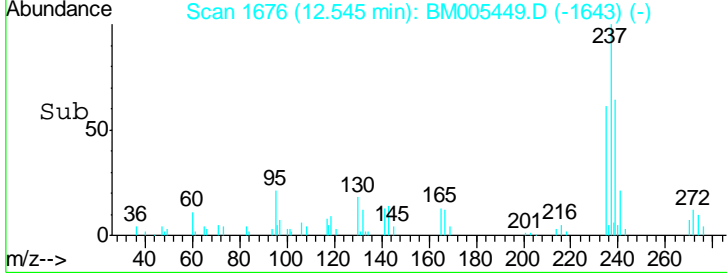
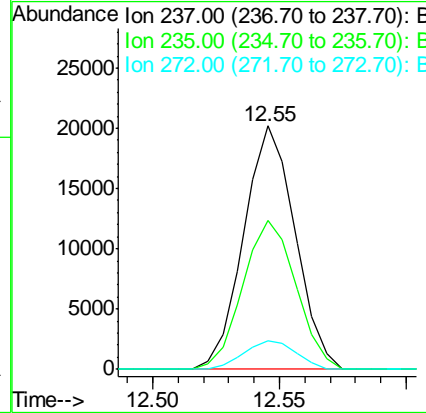
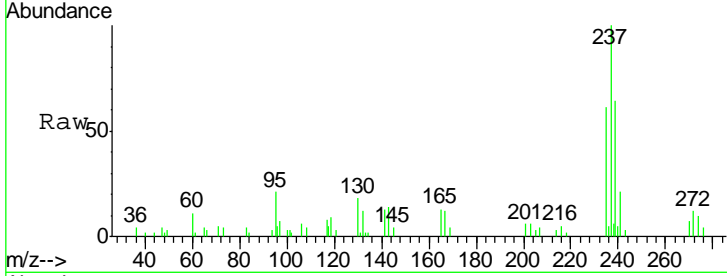




#37  
 Hexachlorocyclopentadiene  
 Concen: 12.77 ng/ul  
 RT: 12.55 min Scan# 1676  
 Delta R.T. -0.01 min  
 Lab File: BM005449.D  
 Acq: 14 May 2016 04:32

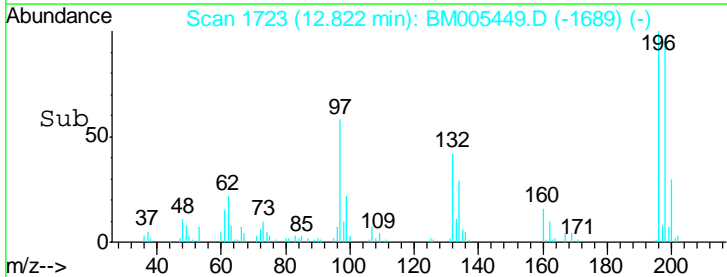
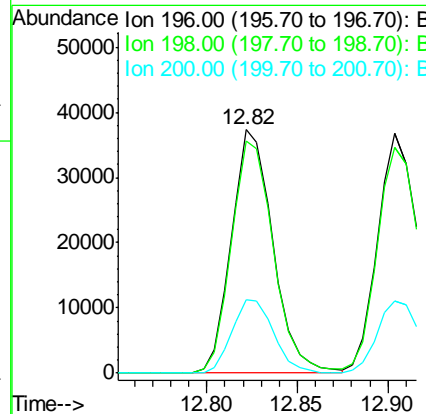
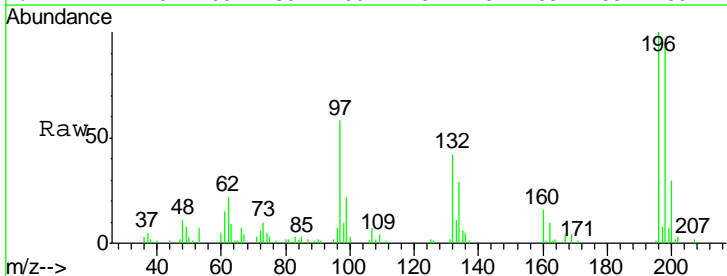
Instrument :  
 BNA\_M  
 ClientSampled :  
 SST02035

Tgt Ion	Resp	Lower	Upper
237	28620		
235	61.2	53.5	80.3
272	12.0	10.6	15.8

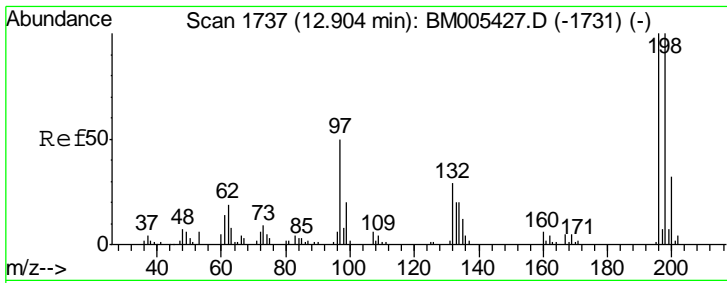


#38  
 2,4,6-Trichlorophenol  
 Concen: 20.38 ng/ul  
 RT: 12.82 min Scan# 1723  
 Delta R.T. 0.00 min  
 Lab File: BM005449.D  
 Acq: 14 May 2016 04:32

Tgt Ion	Resp	Lower	Upper
196	59537		
198	95.5	72.3	108.5
200	30.1	23.9	35.9



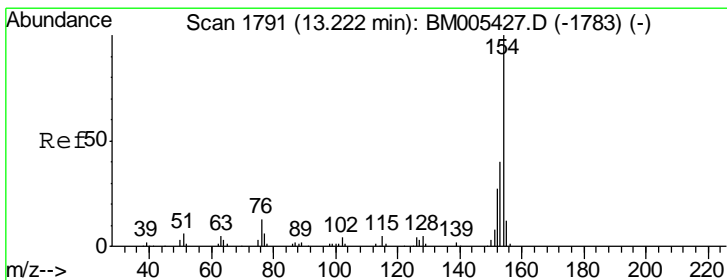
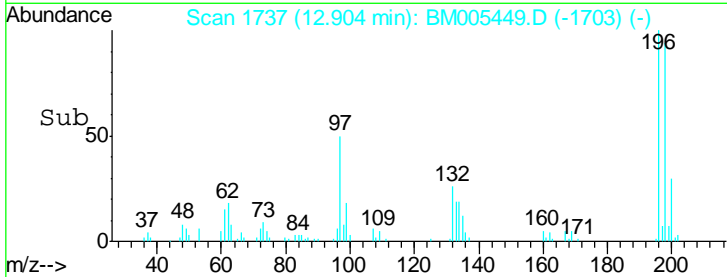
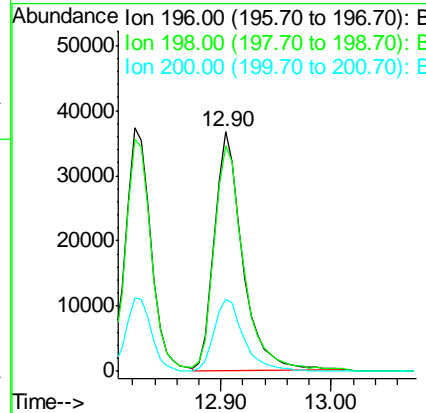
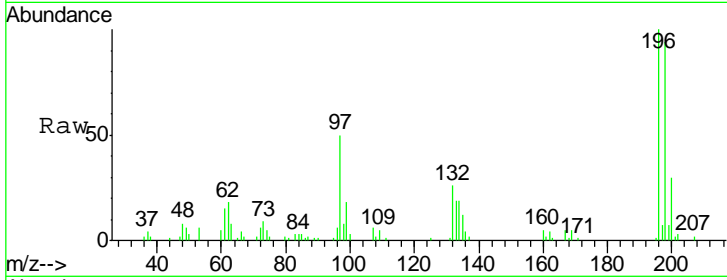




#39  
 2,4,5-Trichlorophenol  
 Concen: 19.76 ng/ul  
 RT: 12.90 min Scan# 1737  
 Delta R.T. 0.00 min  
 Lab File: BM005449.D  
 Acq: 14 May 2016 04:32

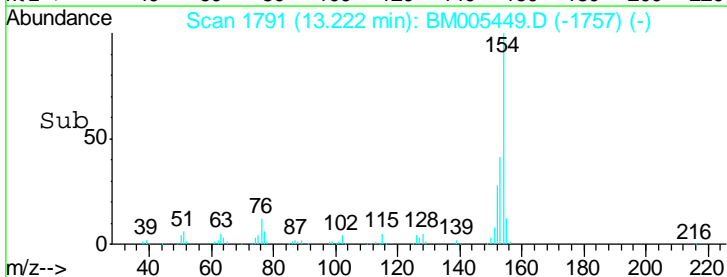
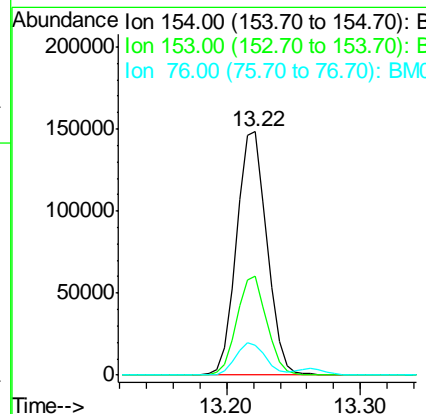
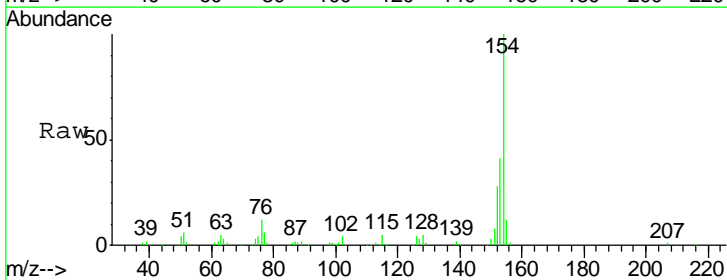
Instrument :  
 BNA\_M  
 ClientSampled :  
 SSTD02035

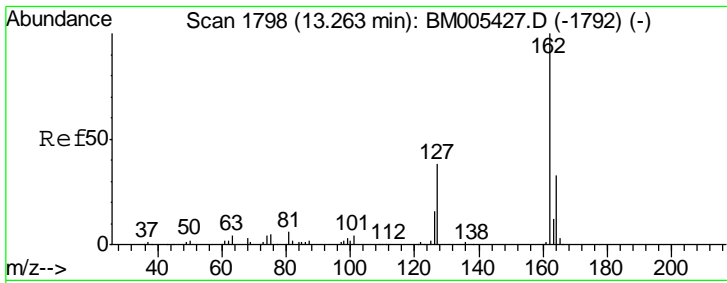
Tgt Ion	Resp	Lower	Upper
196	100		
198	94.2	78.5	117.7
200	30.2	25.4	38.2



#40  
 1,1'-Biphenyl  
 Concen: 20.55 ng/ul  
 RT: 13.22 min Scan# 1791  
 Delta R.T. 0.00 min  
 Lab File: BM005449.D  
 Acq: 14 May 2016 04:32

Tgt Ion	Resp	Lower	Upper
154	100		
153	40.6	32.1	48.1
76	12.4	10.6	15.8

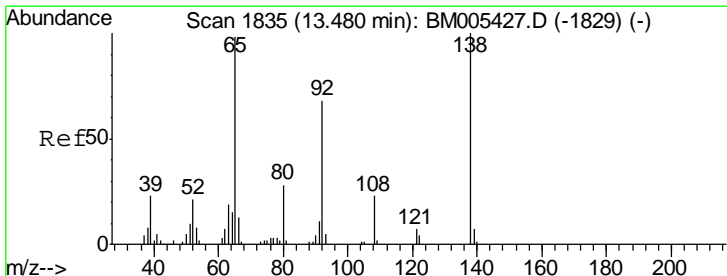
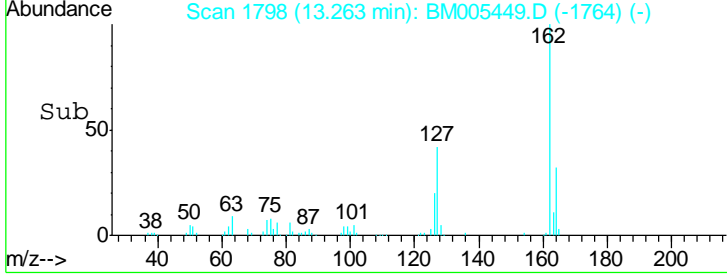
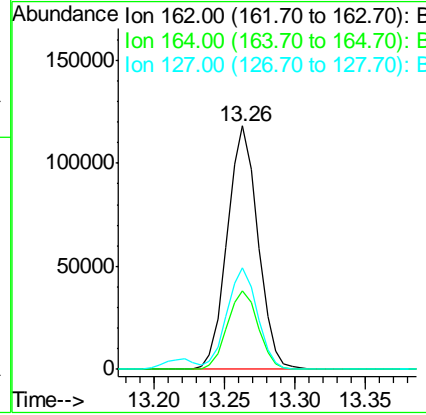
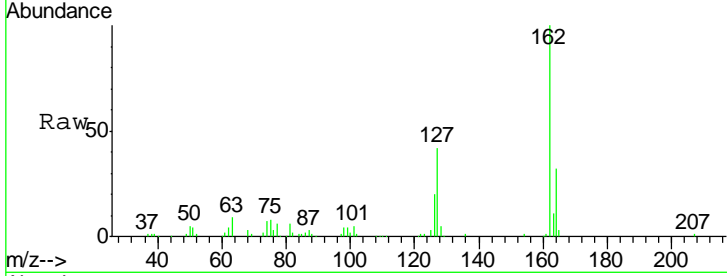




#41  
 2-Chloronaphthalene  
 Concen: 20.71 ng/ul  
 RT: 13.26 min Scan# 1798  
 Delta R.T. 0.00 min  
 Lab File: BM005449.D  
 Acq: 14 May 2016 04:32

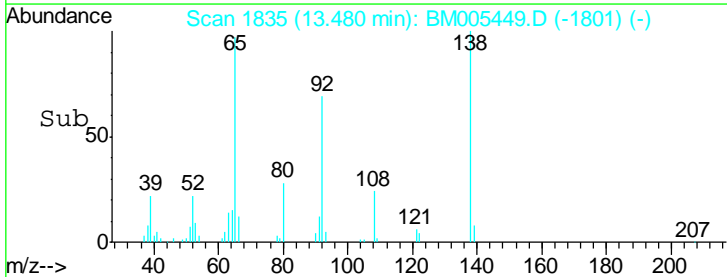
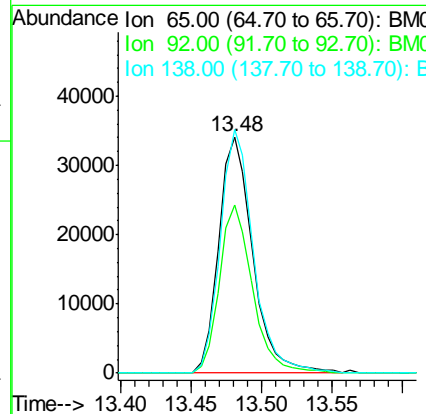
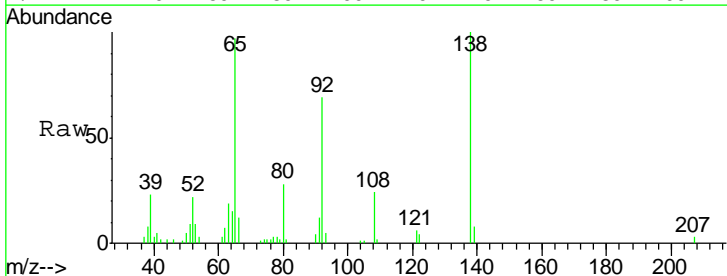
Instrument :  
 BNA\_M  
 ClientSampleID :  
 SSTD02035

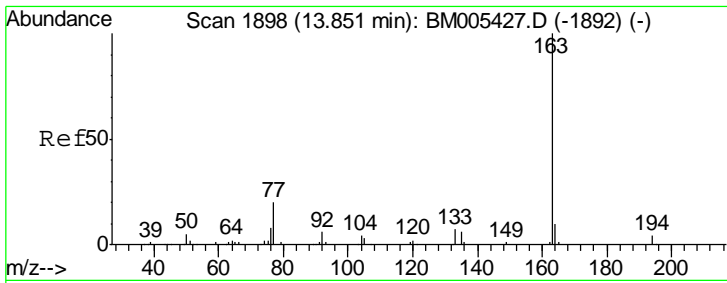
Tgt Ion	Resp	Lower	Upper
162	178858		
164	32.5	25.5	38.3
127	41.5	31.9	47.9



#42  
 2-Nitroaniline  
 Concen: 21.55 ng/ul  
 RT: 13.48 min Scan# 1835  
 Delta R.T. 0.00 min  
 Lab File: BM005449.D  
 Acq: 14 May 2016 04:32

Tgt Ion	Resp	Lower	Upper
65	57295		
92	70.9	60.1	90.1
138	103.0	84.0	126.0

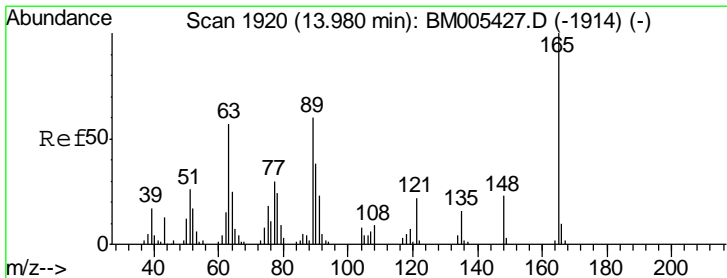
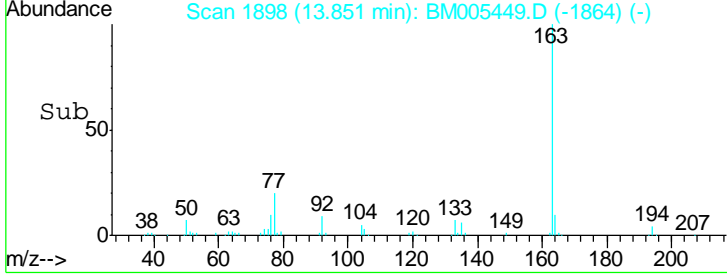
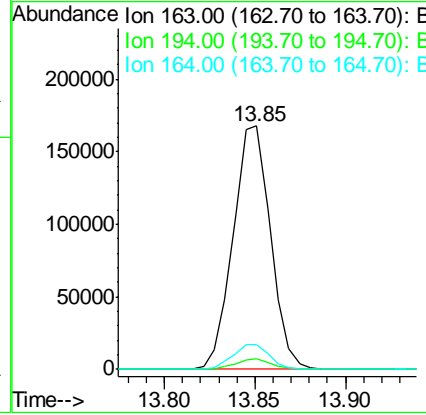
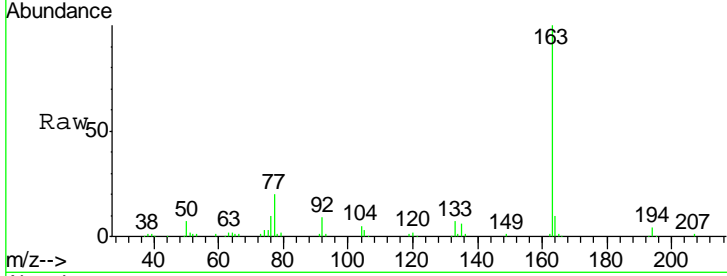




#44  
 Dimethylphthalate  
 Concen: 20.83 ng/ul  
 RT: 13.85 min Scan# 1898  
 Delta R.T. 0.00 min  
 Lab File: BM005449.D  
 Acq: 14 May 2016 04:32

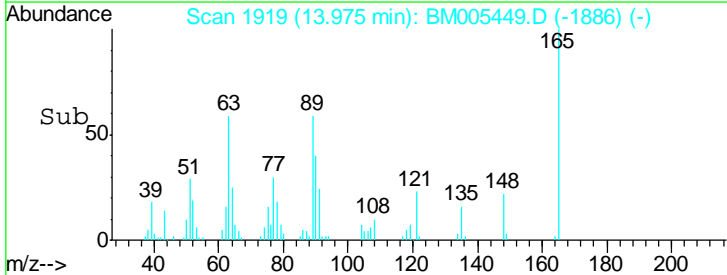
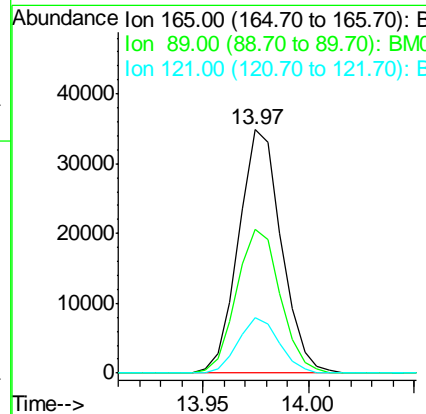
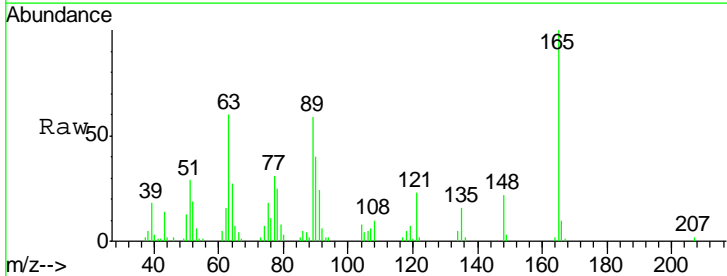
Instrument :  
 BNA\_M  
 ClientSampleID :  
 SSTD02035

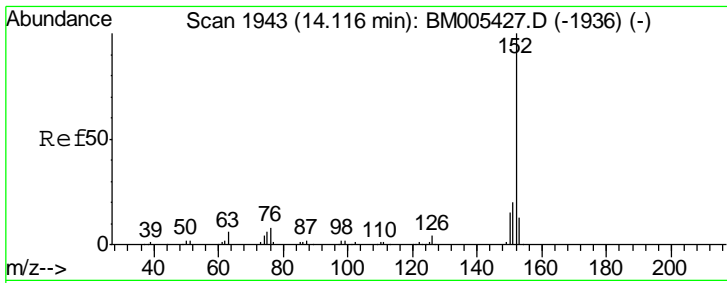
Tgt Ion	Resp	Lower	Upper
163	100		
194	4.2	3.4	5.0
164	9.9	7.9	11.9



#45  
 2,6-Dinitrotoluene  
 Concen: 21.51 ng/ul  
 RT: 13.97 min Scan# 1919  
 Delta R.T. -0.01 min  
 Lab File: BM005449.D  
 Acq: 14 May 2016 04:32

Tgt Ion	Resp	Lower	Upper
165	100		
89	59.2	52.2	78.4
121	22.6	21.0	31.4

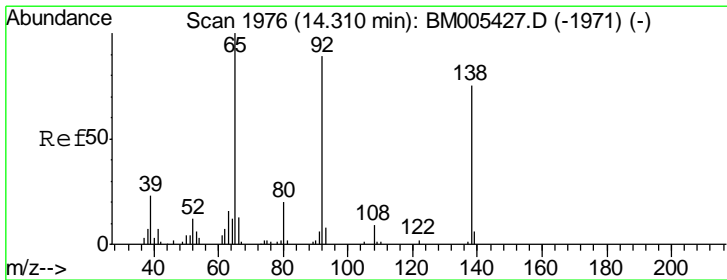
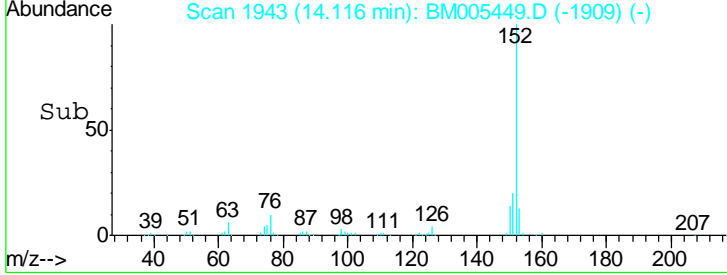
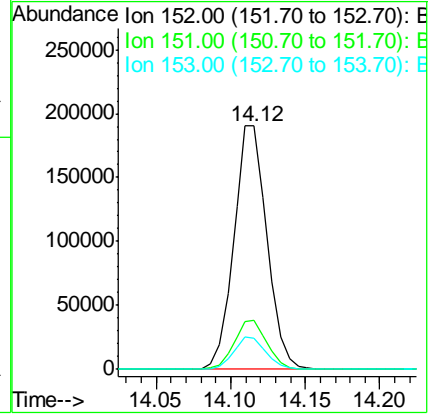
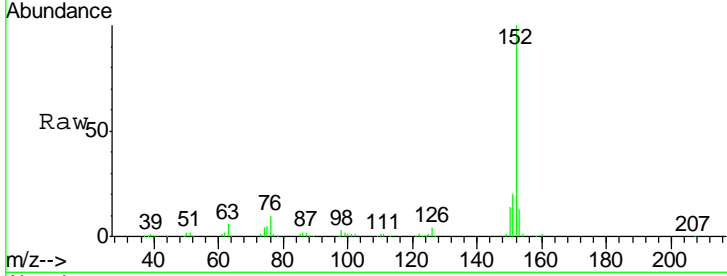




#47  
 Acenaphthylene  
 Concen: 20.52 ng/ul  
 RT: 14.12 min Scan# 1943  
 Delta R.T. 0.00 min  
 Lab File: BM005449.D  
 Acq: 14 May 2016 04:32

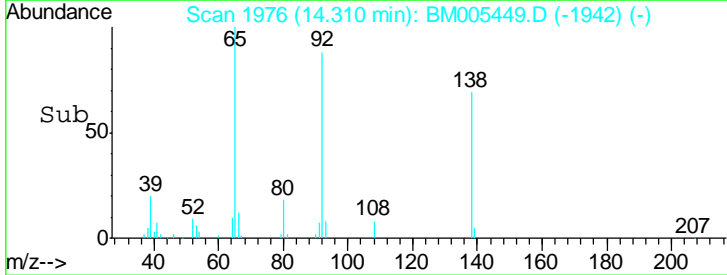
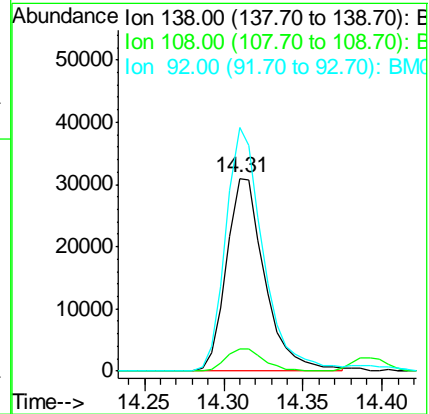
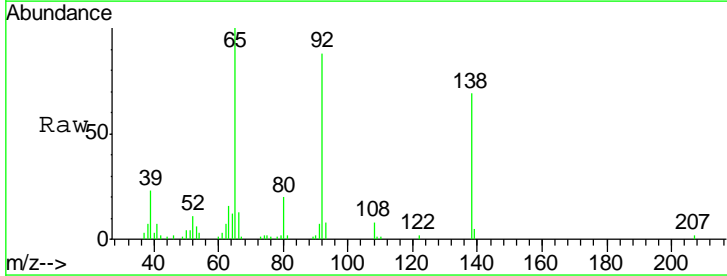
Instrument :  
 BNA\_M  
 ClientSampleID :  
 SST02035

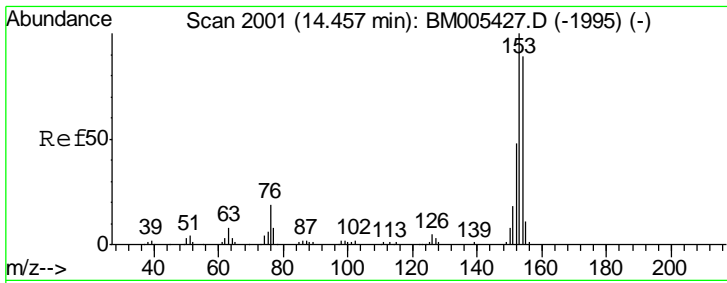
Tgt Ion	Resp	Lower	Upper
152	100		
151	20.2	16.0	24.0
153	13.0	10.3	15.5



#48  
 3-Nitroaniline  
 Concen: 21.36 ng/ul  
 RT: 14.31 min Scan# 1976  
 Delta R.T. 0.00 min  
 Lab File: BM005449.D  
 Acq: 14 May 2016 04:32

Tgt Ion	Resp	Lower	Upper
138	100		
108	11.8	8.6	13.0
92	126.4	93.5	140.3

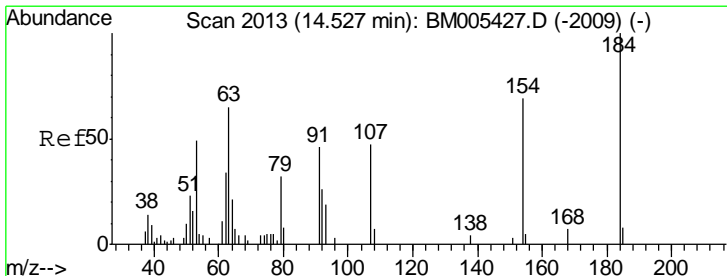
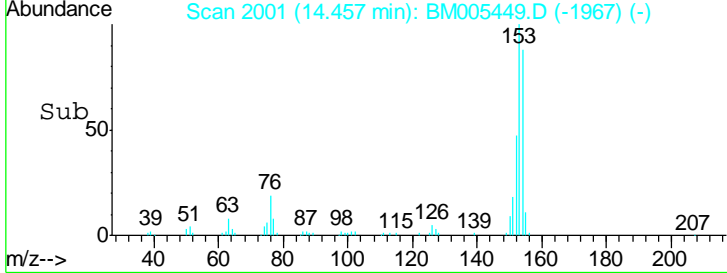
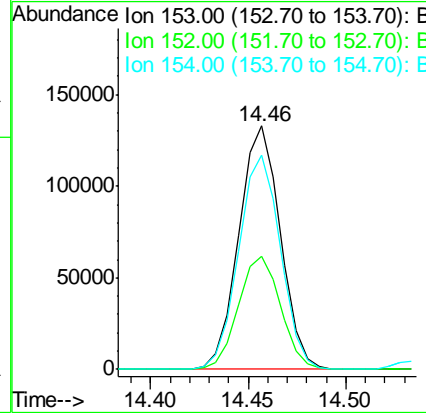
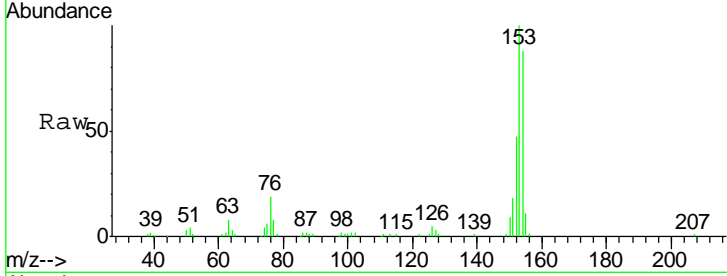




#49  
 Acenaphthene  
 Concen: 20.70 ng/ul  
 RT: 14.46 min Scan# 2001  
 Delta R.T. 0.00 min  
 Lab File: BM005449.D  
 Acq: 14 May 2016 04:32

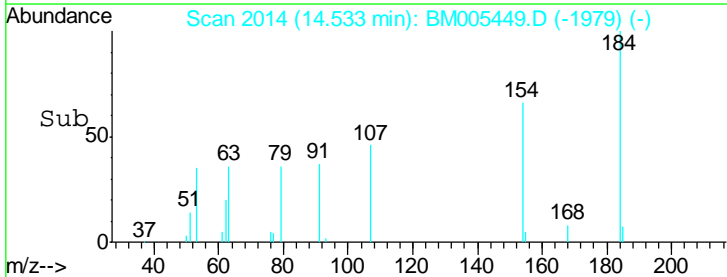
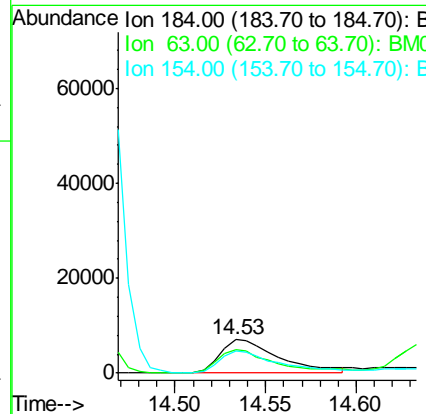
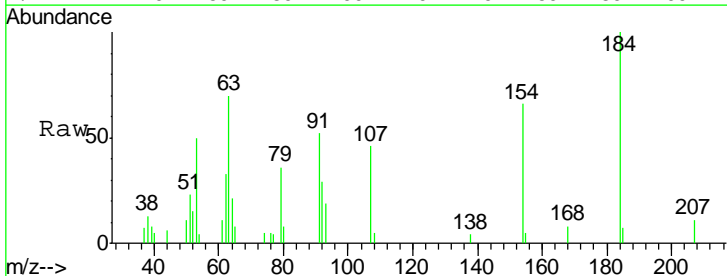
Instrument :  
 BNA\_M  
 ClientSampled :  
 SST02035

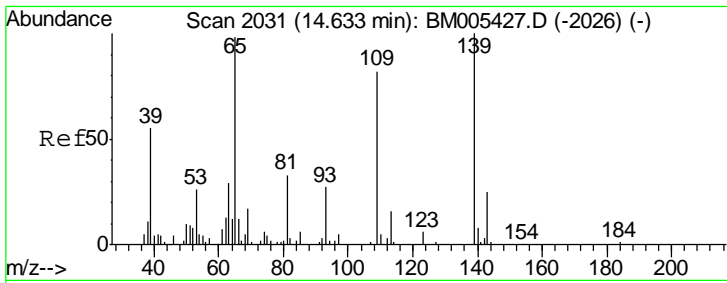
Tgt Ion	Resp	Lower	Upper
153	195609		
152	46.6	38.9	58.3
154	87.9	70.3	105.5



#50  
 2,4-Dinitrophenol  
 Concen: 12.22 ng/ul  
 RT: 14.53 min Scan# 2014  
 Delta R.T. 0.01 min  
 Lab File: BM005449.D  
 Acq: 14 May 2016 04:32

Tgt Ion	Resp	Lower	Upper
184	16013		
63	69.9	56.9	85.3
154	65.6	54.6	82.0

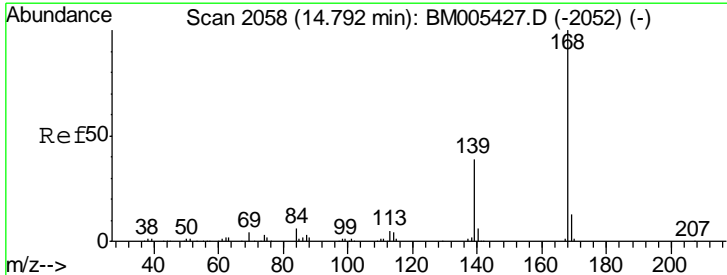
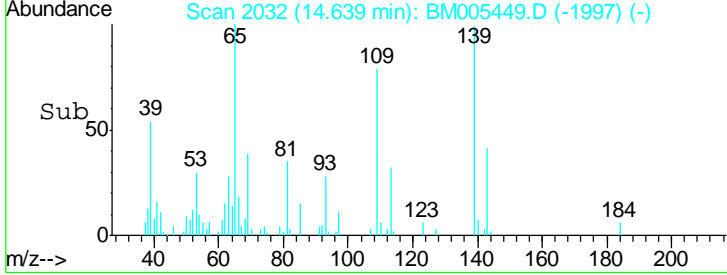
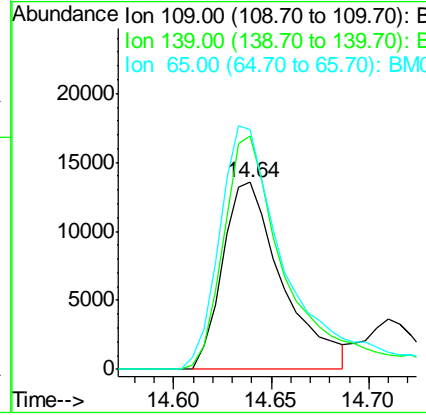
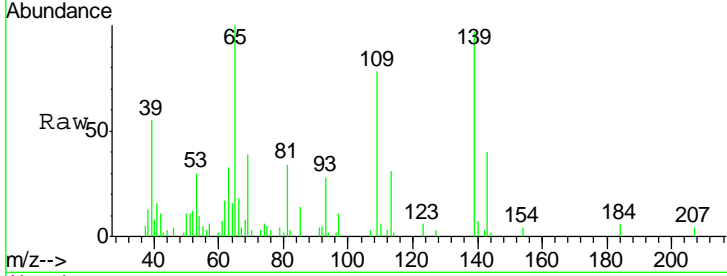




#52  
 4-Nitrophenol  
 Concen: 16.44 ng/ul  
 RT: 14.64 min Scan# 2032  
 Delta R.T. 0.01 min  
 Lab File: BM005449.D  
 Acq: 14 May 2016 04:32

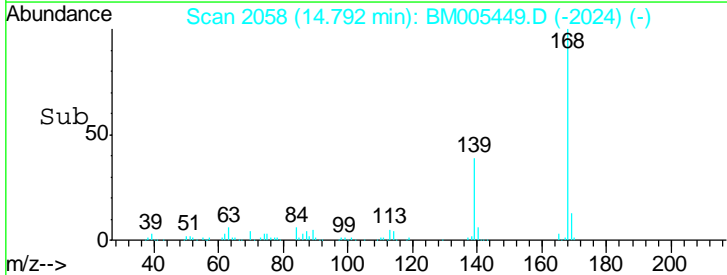
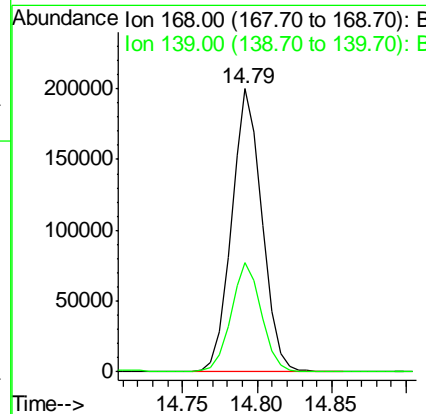
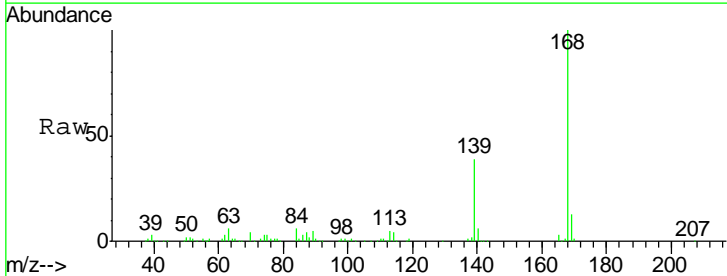
Instrument :  
 BNA\_M  
 ClientSampleID :  
 SSTD02035

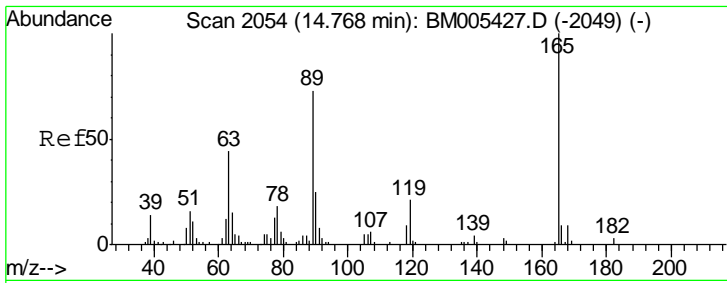
Tgt Ion	Resp	Lower	Upper
109	100		
139	124.8	103.6	155.4
65	128.2	104.7	157.1



#53  
 Dibenzofuran  
 Concen: 20.75 ng/ul  
 RT: 14.79 min Scan# 2058  
 Delta R.T. 0.00 min  
 Lab File: BM005449.D  
 Acq: 14 May 2016 04:32

Tgt Ion	Resp	Lower	Upper
168	100		
139	38.7	30.3	45.5

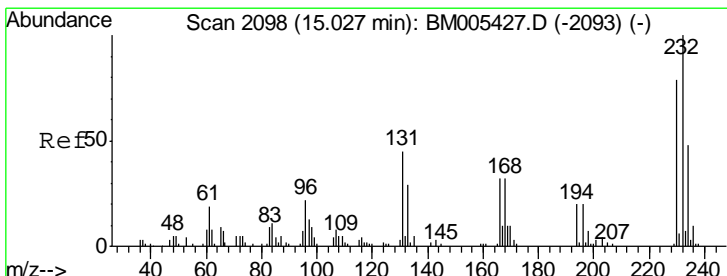
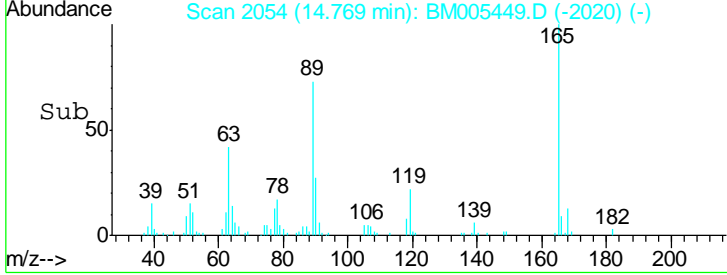
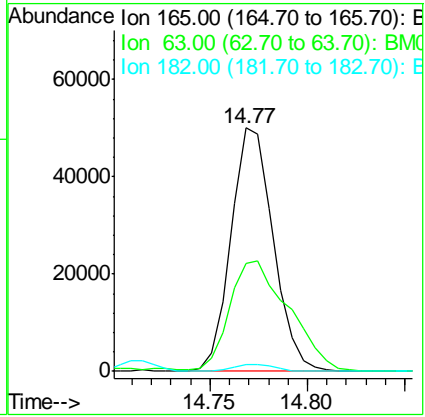
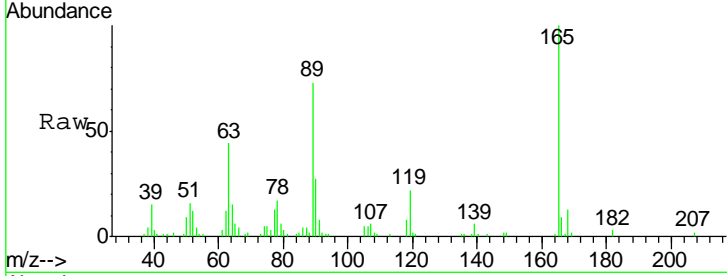




#54  
 2,4-Dinitrotoluene  
 Concen: 22.12 ng/ul  
 RT: 14.77 min Scan# 2054  
 Delta R.T. 0.00 min  
 Lab File: BM005449.D  
 Acq: 14 May 2016 04:32

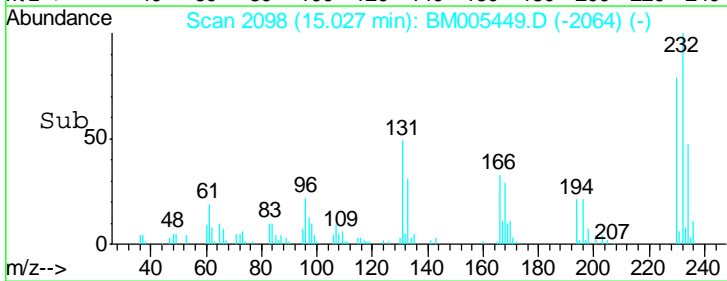
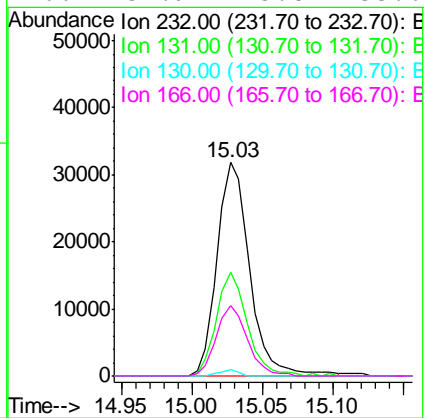
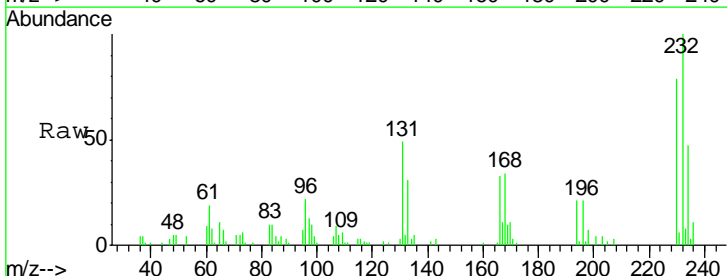
Instrument :  
 BNA\_M  
 ClientSampled :  
 SST02035

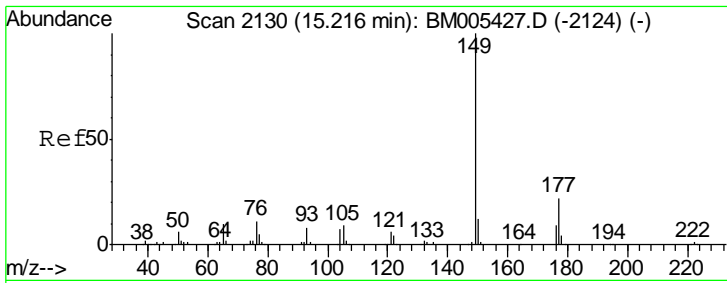
Tgt Ion	Resp	Lower	Upper
165	100		
63	44.3	36.2	54.4
182	3.0	2.5	3.7



#55  
 2,3,4,6-Tetrachlorophenol  
 Concen: 18.67 ng/ul  
 RT: 15.03 min Scan# 2098  
 Delta R.T. 0.00 min  
 Lab File: BM005449.D  
 Acq: 14 May 2016 04:32

Tgt Ion	Resp	Lower	Upper
232	100		
131	48.7	35.0	52.6
130	2.9	0.0	0.0#
166	32.9	23.8	35.6

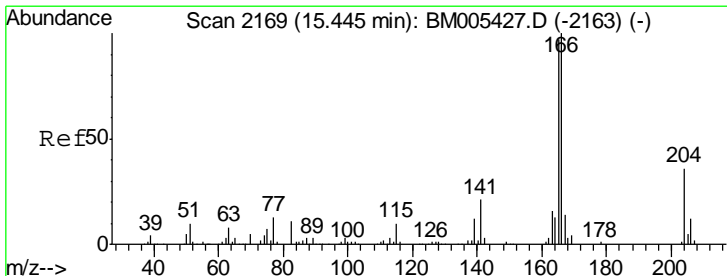
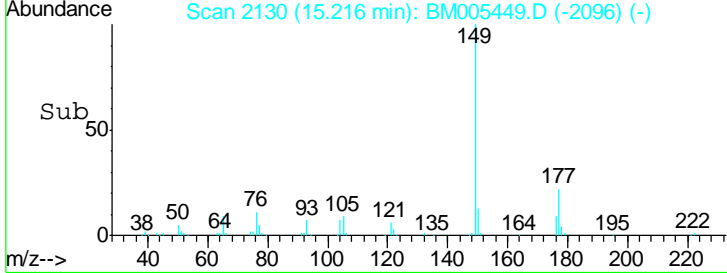
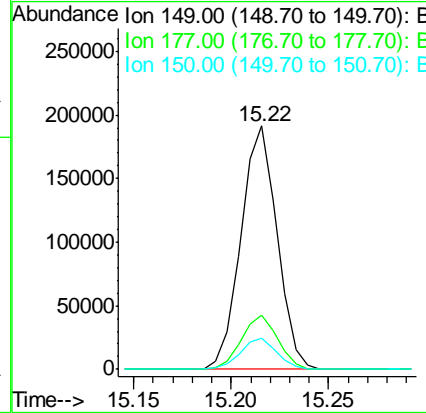
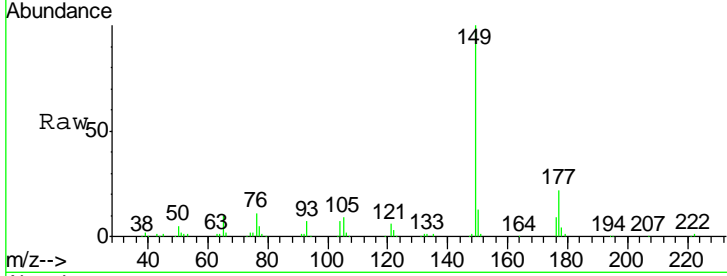




#56  
 Diethylphthalate  
 Concen: 21.00 ng/ul  
 RT: 15.22 min Scan# 2130  
 Delta R.T. 0.00 min  
 Lab File: BM005449.D  
 Acq: 14 May 2016 04:32

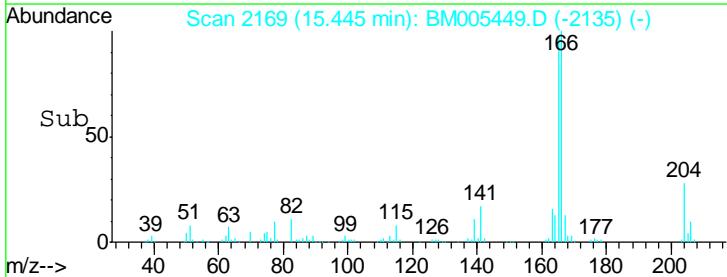
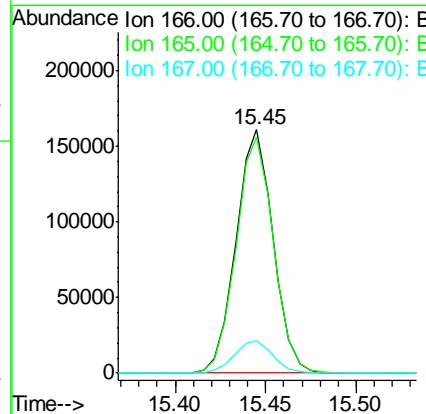
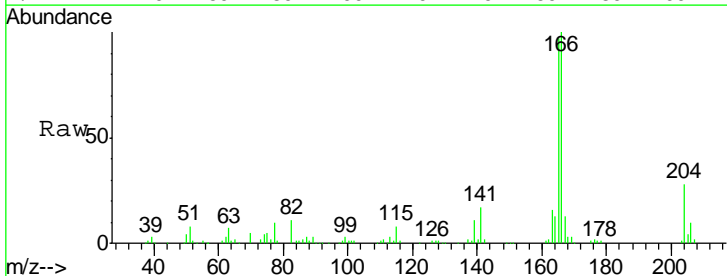
Instrument :  
 BNA\_M  
 ClientSampled :  
 SSTD02035

Tgt Ion	Resp	Lower	Upper
149	100		
177	22.5	17.6	26.4
150	12.6	9.8	14.8

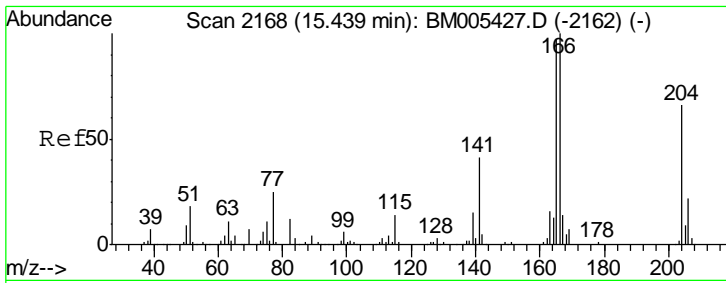


#58  
 Fluorene  
 Concen: 21.26 ng/ul  
 RT: 15.45 min Scan# 2169  
 Delta R.T. 0.00 min  
 Lab File: BM005449.D  
 Acq: 14 May 2016 04:32

Tgt Ion	Resp	Lower	Upper
166	100		
165	97.1	77.9	116.9
167	13.2	10.6	16.0





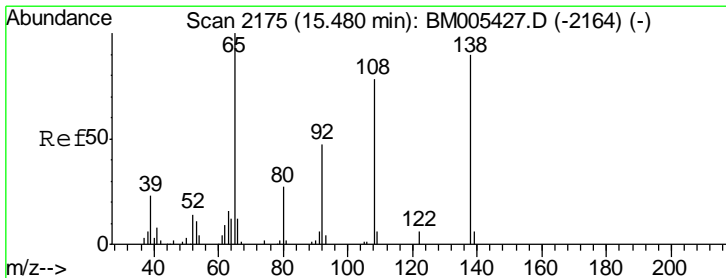
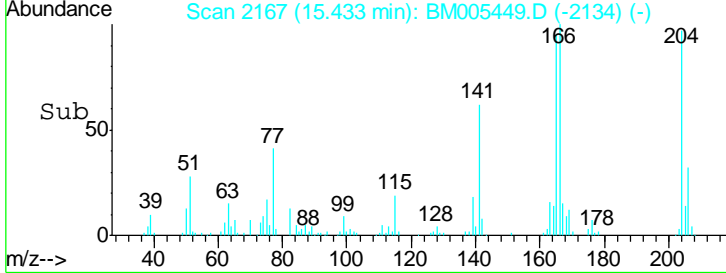
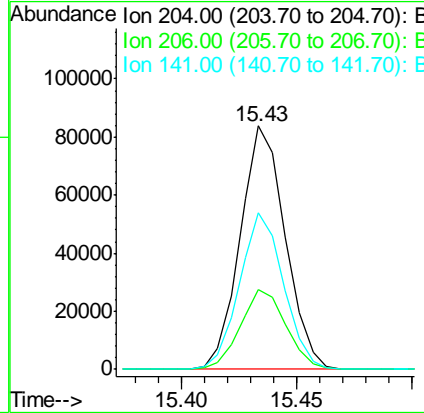
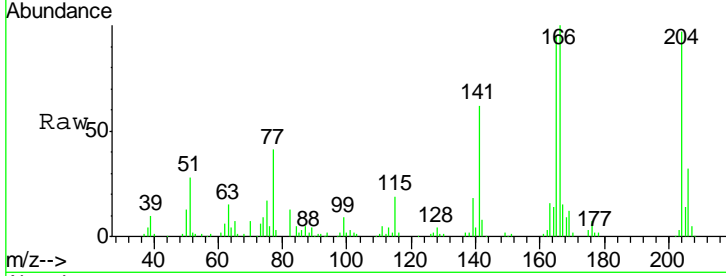


#59  
 4-Chlorophenyl-phenylether  
 Concen: 21.45 ng/ul  
 RT: 15.43 min Scan# 2167  
 Delta R.T. -0.01 min  
 Lab File: BM005449.D  
 Acq: 14 May 2016 04:32

Instrument :  
 BNA\_M  
 ClientSampled :  
 SSTD02035

Tgt Ion: 204 Resp: 113964

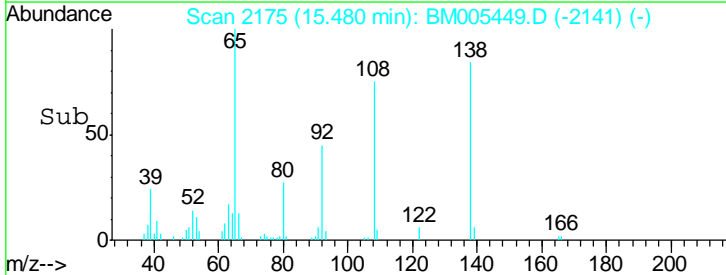
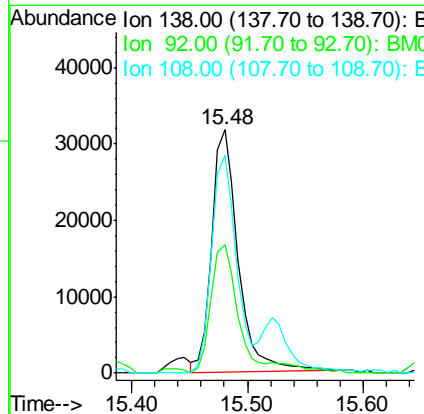
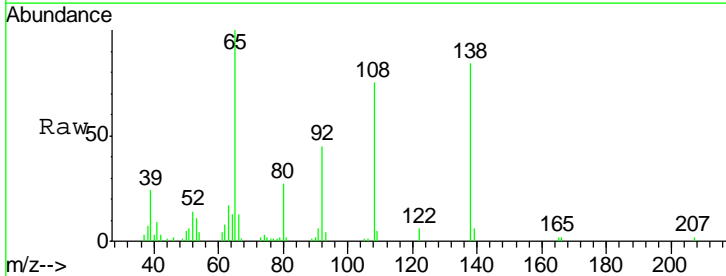
Ion	Ratio	Lower	Upper
204	100		
206	33.0	25.8	38.6
141	64.2	48.9	73.3

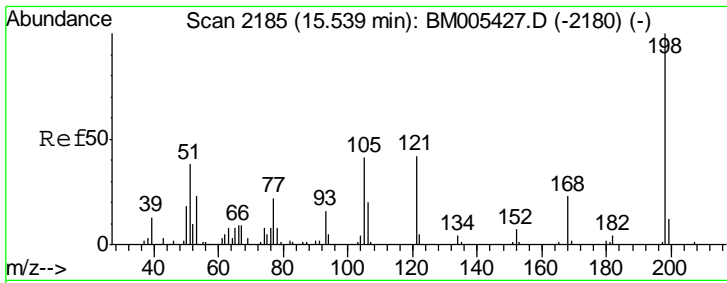


#60  
 4-Nitroaniline  
 Concen: 19.58 ng/ul  
 RT: 15.48 min Scan# 2175  
 Delta R.T. 0.00 min  
 Lab File: BM005449.D  
 Acq: 14 May 2016 04:32

Tgt Ion: 138 Resp: 50381

Ion	Ratio	Lower	Upper
138	100		
92	52.9	44.3	66.5
108	89.3	66.3	99.5

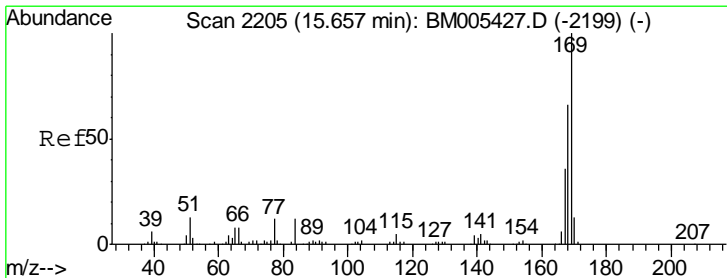
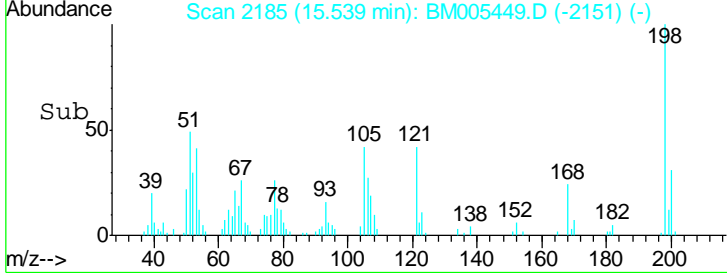
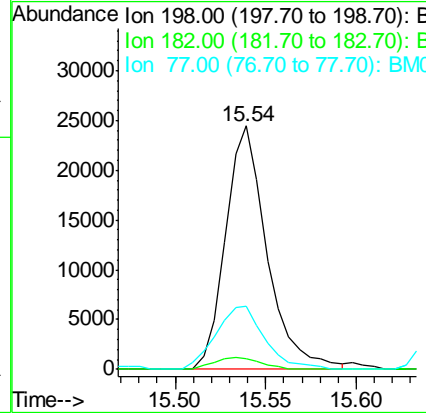
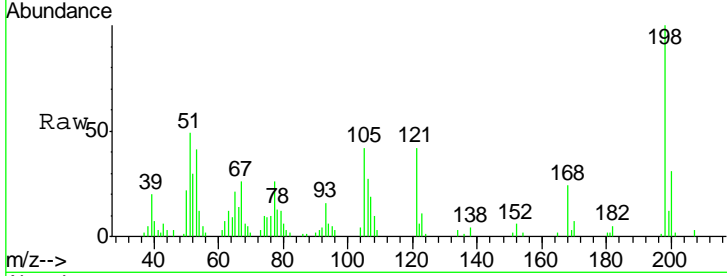




#63  
 4,6-Dinitro-2-methylphenol  
 Concen: 18.39 ng/ul  
 RT: 15.54 min Scan# 2185  
 Delta R.T. 0.00 min  
 Lab File: BM005449.D  
 Acq: 14 May 2016 04:32

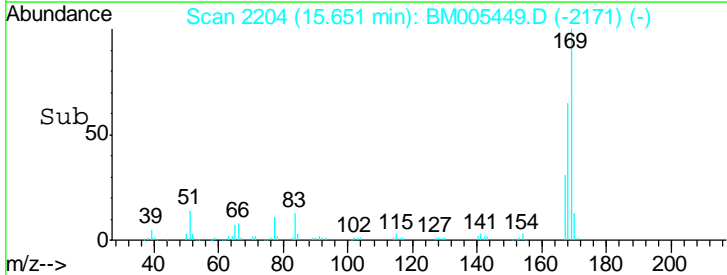
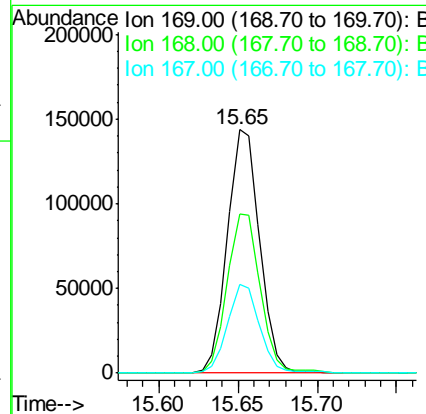
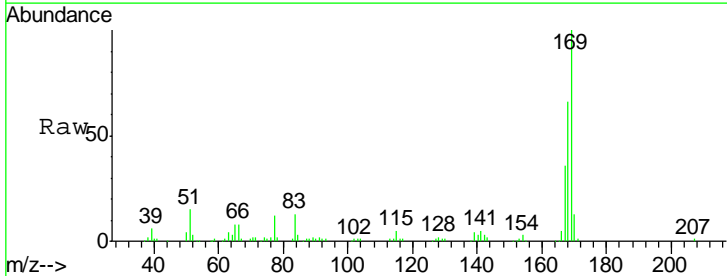
Instrument :  
 BNA\_M  
 ClientSampled :  
 SST02035

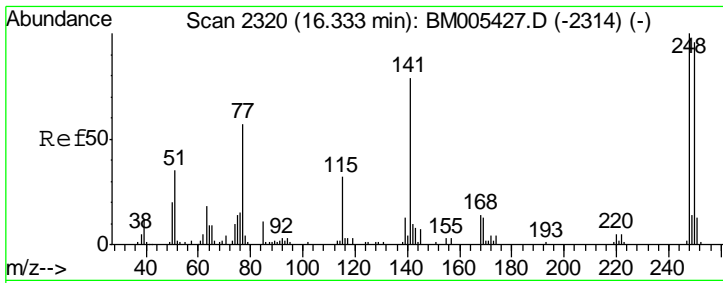
Tgt Ion	Resp	Lower	Upper
198	38851		
182	4.6	5.5	8.3#
77	25.9	24.2	36.2



#64  
 N-Nitrosodiphenylamine  
 Concen: 20.75 ng/ul  
 RT: 15.65 min Scan# 2204  
 Delta R.T. -0.01 min  
 Lab File: BM005449.D  
 Acq: 14 May 2016 04:32

Tgt Ion	Resp	Lower	Upper
169	203081		
168	65.5	52.9	79.3
167	36.2	28.2	42.4

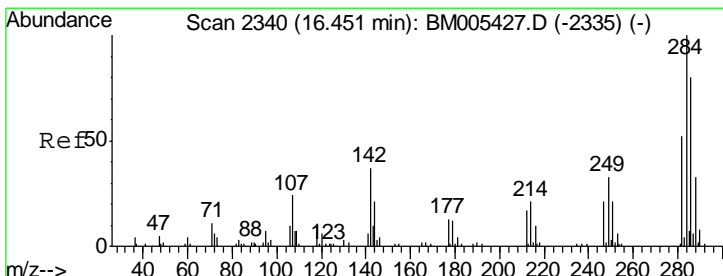
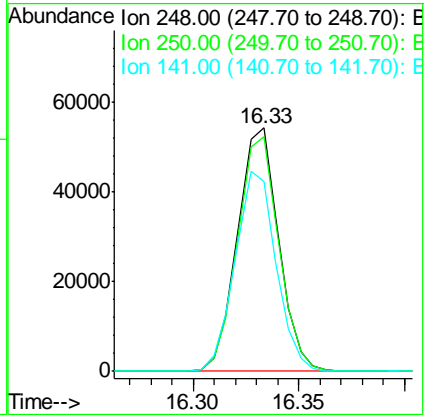
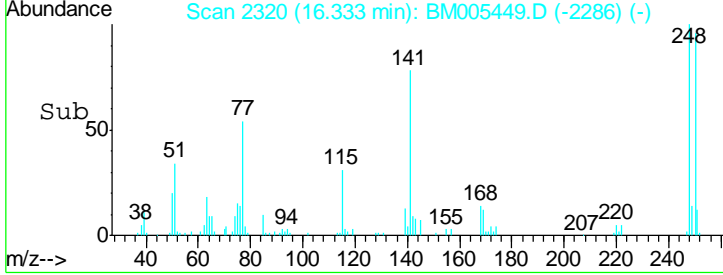
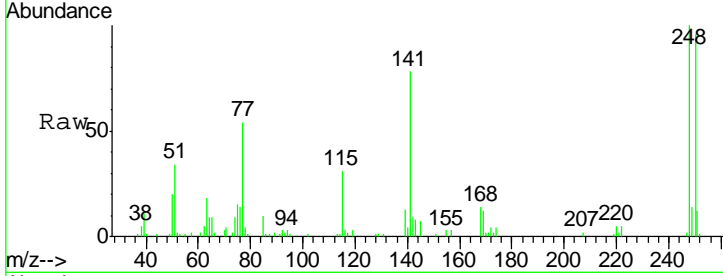




#65  
 4-Bromophenyl-phenylether  
 Concen: 21.45 ng/ul  
 RT: 16.33 min Scan# 2320  
 Delta R.T. 0.00 min  
 Lab File: BM005449.D  
 Acq: 14 May 2016 04:32

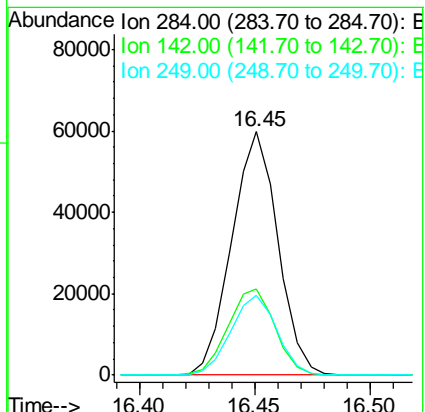
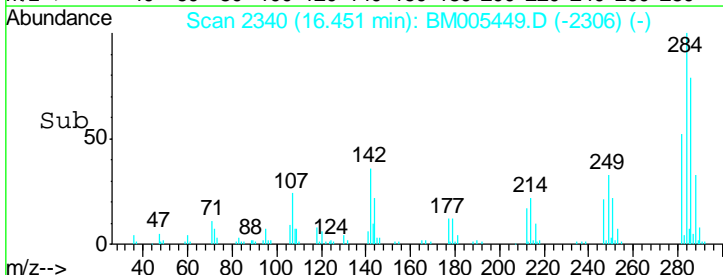
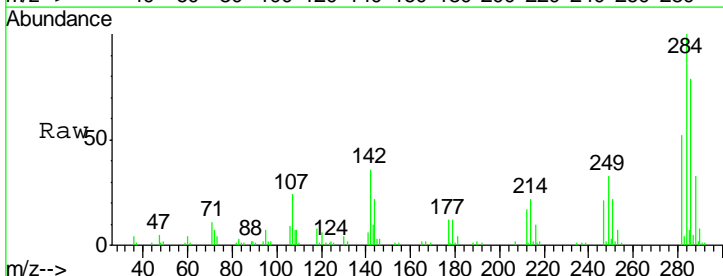
Instrument :  
 BNA\_M  
 ClientSampled :  
 SST02035

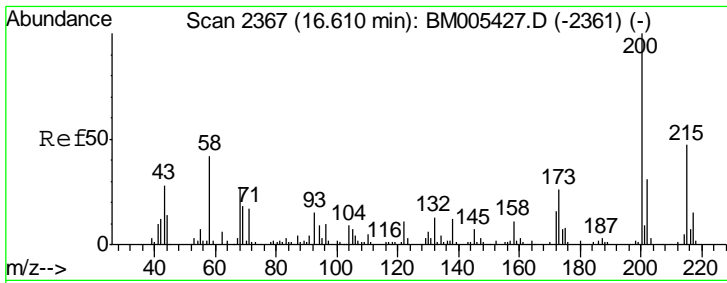
Tgt Ion	Resp	Lower	Upper
248	73526		
248	100		
250	96.3	78.4	117.6
141	78.2	67.0	100.4



#66  
 Hexachlorobenzene  
 Concen: 21.58 ng/ul  
 RT: 16.45 min Scan# 2340  
 Delta R.T. 0.00 min  
 Lab File: BM005449.D  
 Acq: 14 May 2016 04:32

Tgt Ion	Resp	Lower	Upper
284	82959		
284	100		
142	35.6	31.0	46.6
249	32.7	26.9	40.3

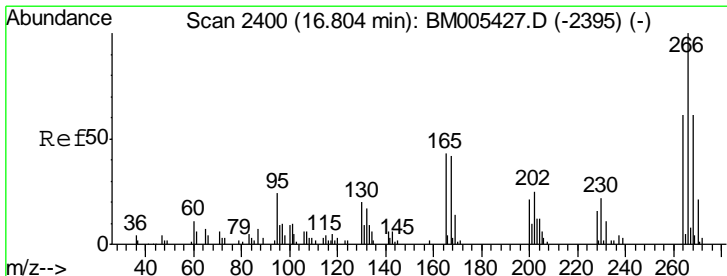
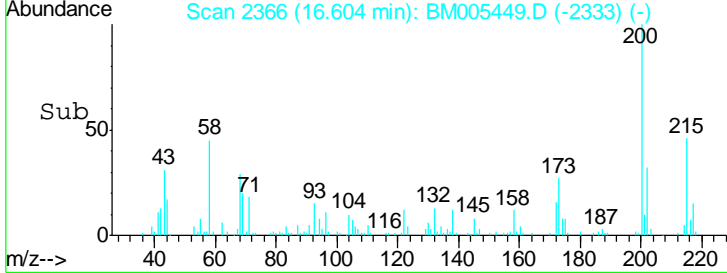
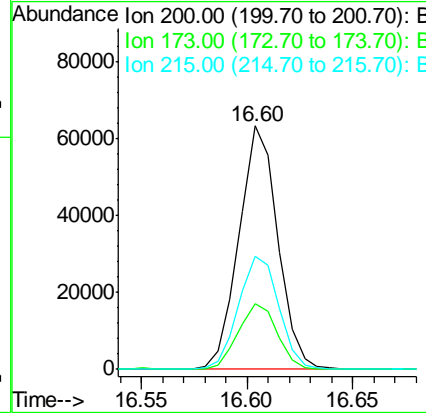
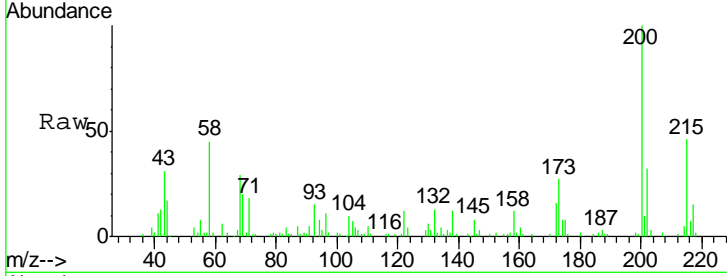




#67  
 Atrazine  
 Concen: 22.53 ng/ul  
 RT: 16.60 min Scan# 2366  
 Delta R.T. -0.01 min  
 Lab File: BM005449.D  
 Acq: 14 May 2016 04:32

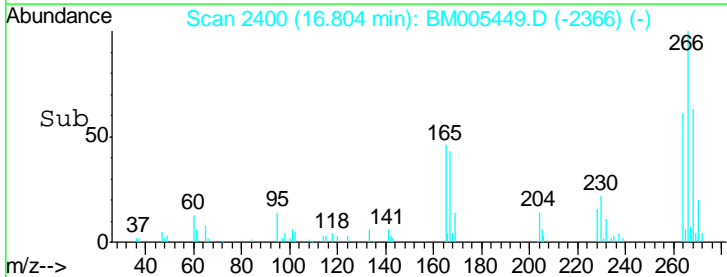
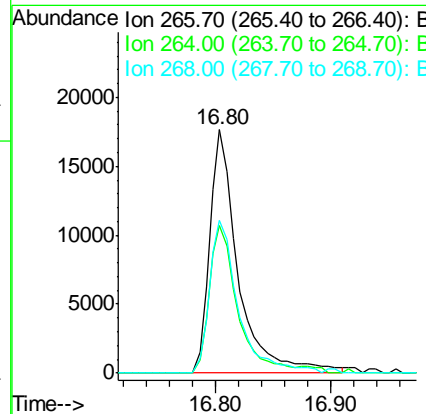
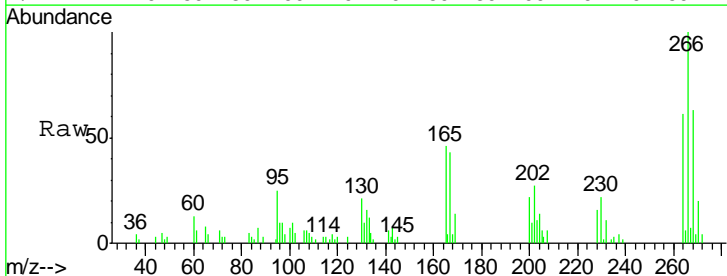
Instrument :  
 BNA\_M  
 ClientSampleID :  
 SST02035

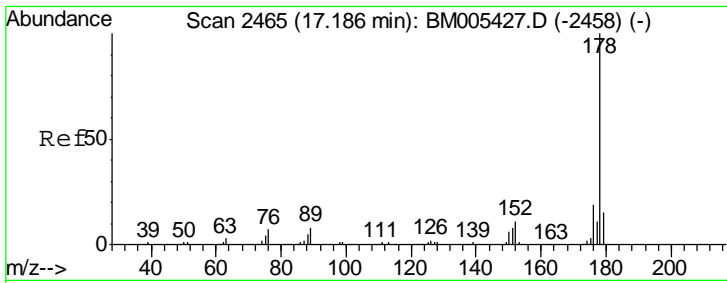
Tgt Ion	Resp	Lower	Upper
200	100		
173	26.9	21.0	31.4
215	46.2	37.4	56.2



#68  
 Pentachlorophenol  
 Concen: 14.25 ng/ul  
 RT: 16.80 min Scan# 2400  
 Delta R.T. 0.00 min  
 Lab File: BM005449.D  
 Acq: 14 May 2016 04:32

Tgt Ion	Resp	Lower	Upper
266	100		
264	60.8	52.0	78.0
268	62.7	53.0	79.6

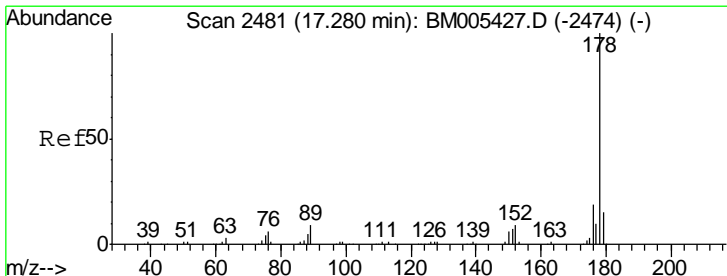
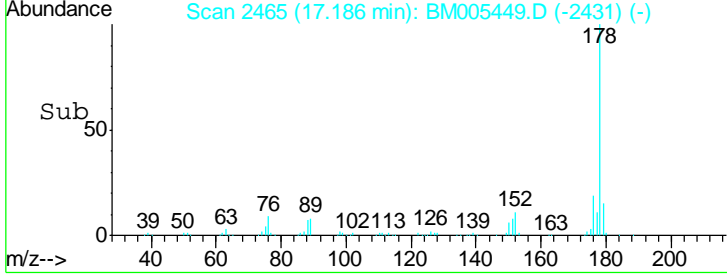
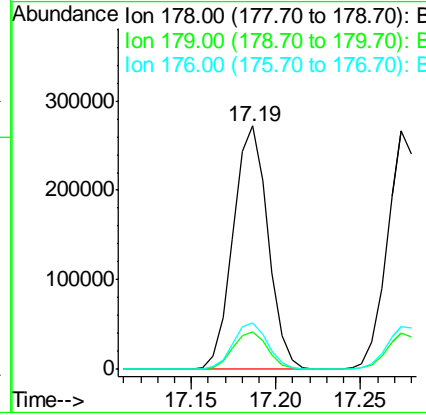
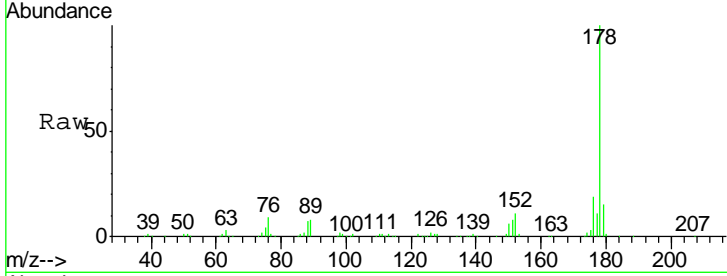




#69  
 Phenanthrene  
 Concen: 20.75 ng/ul  
 RT: 17.19 min Scan# 2465  
 Delta R.T. 0.00 min  
 Lab File: BM005449.D  
 Acq: 14 May 2016 04:32

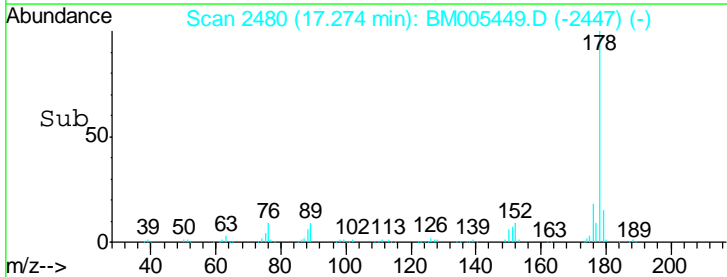
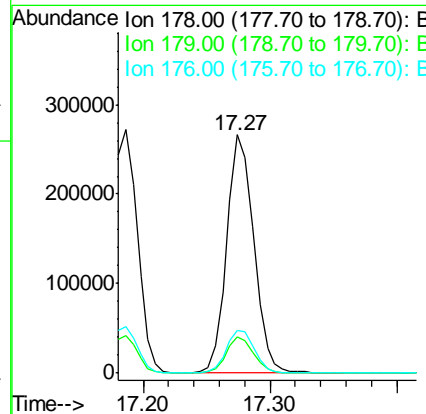
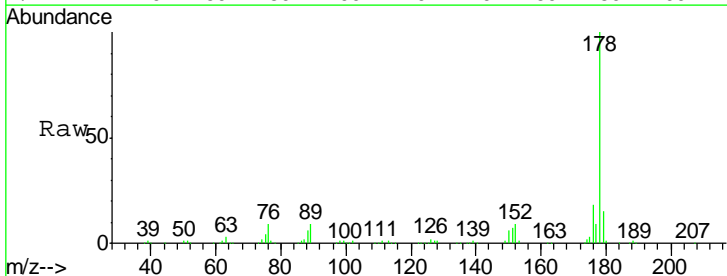
Instrument :  
 BNA\_M  
 ClientSampled :  
 SSTD02035

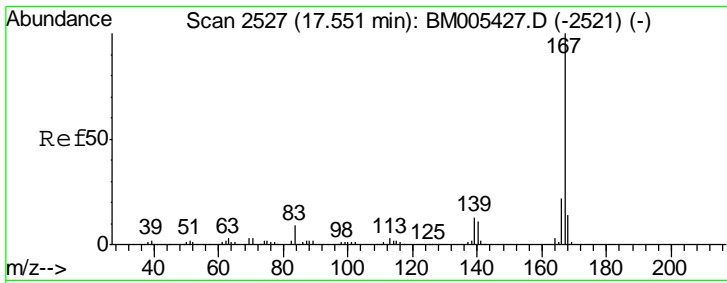
Tgt Ion	Resp	Lower	Upper
178	390092		
179	15.3	12.3	18.5
176	19.0	15.2	22.8



#71  
 Anthracene  
 Concen: 21.02 ng/ul  
 RT: 17.27 min Scan# 2480  
 Delta R.T. -0.01 min  
 Lab File: BM005449.D  
 Acq: 14 May 2016 04:32

Tgt Ion	Resp	Lower	Upper
178	393919		
179	15.4	12.4	18.6
176	18.1	15.1	22.7

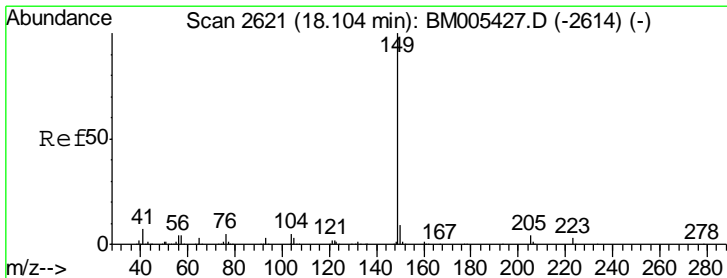
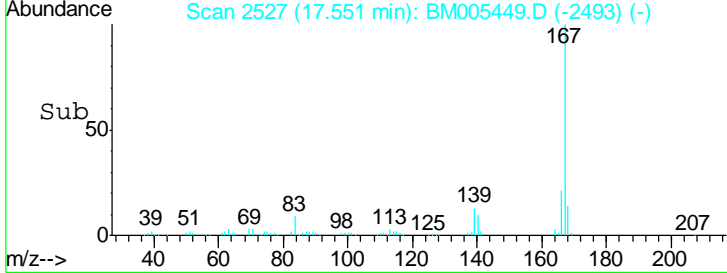
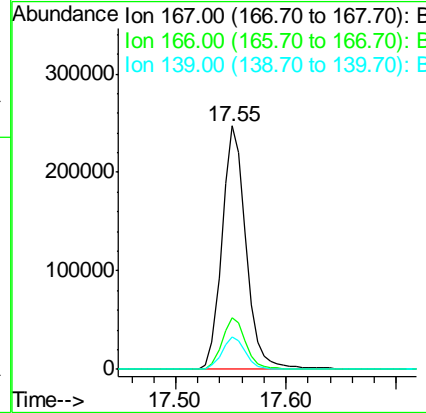
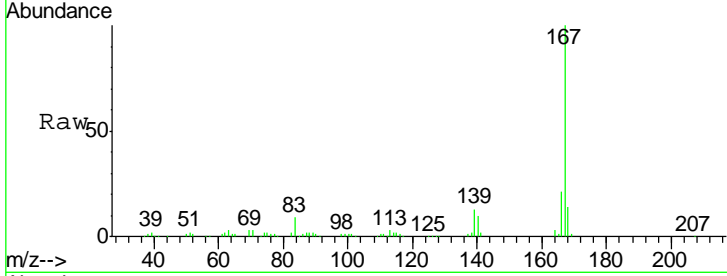




#72  
 Carbazole  
 Concen: 22.67 ng/ul  
 RT: 17.55 min Scan# 2527  
 Delta R.T. 0.00 min  
 Lab File: BM005449.D  
 Acq: 14 May 2016 04:32

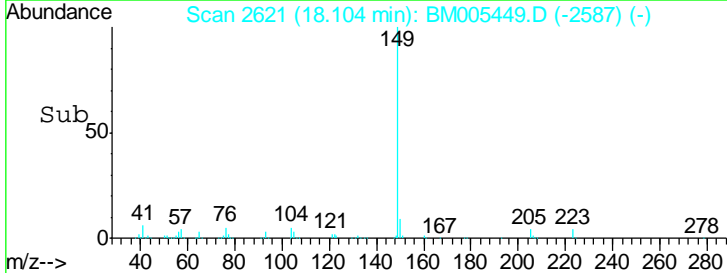
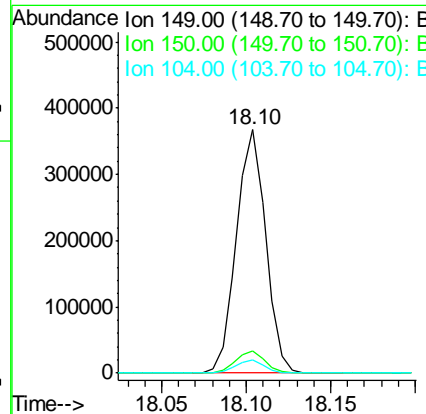
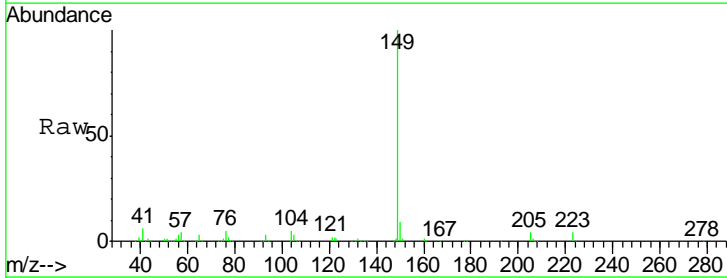
Instrument :  
 BNA\_M  
 ClientSampled :  
 SSTD02035

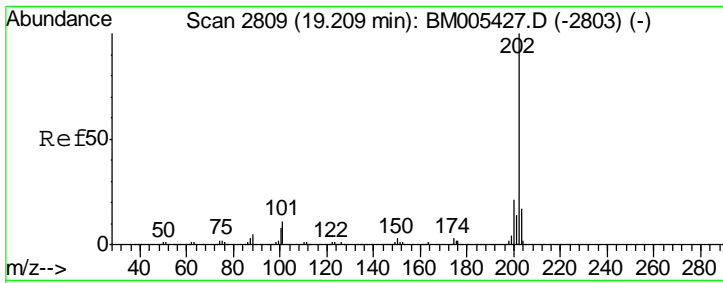
Tgt Ion	Resp	Lower	Upper
167	100		
166	21.1	17.1	25.7
139	13.1	10.2	15.2



#73  
 Di-n-butylphthalate  
 Concen: 22.01 ng/ul  
 RT: 18.10 min Scan# 2621  
 Delta R.T. 0.00 min  
 Lab File: BM005449.D  
 Acq: 14 May 2016 04:32

Tgt Ion	Resp	Lower	Upper
149	100		
150	9.2	7.3	10.9
104	5.2	4.1	6.1

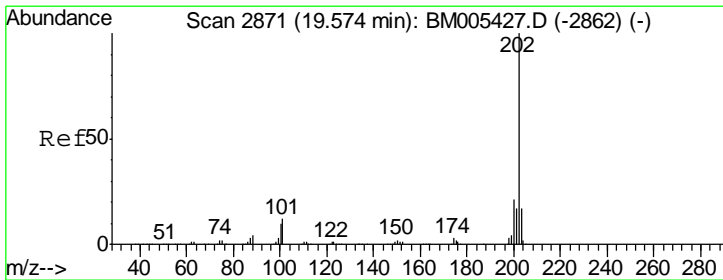
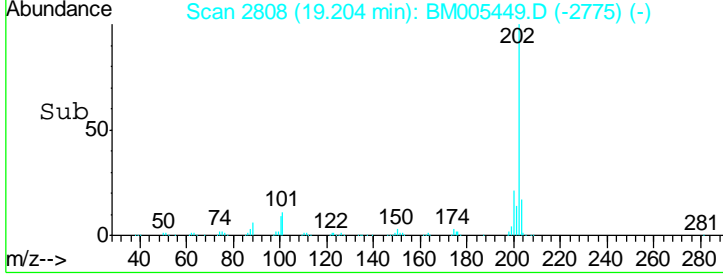
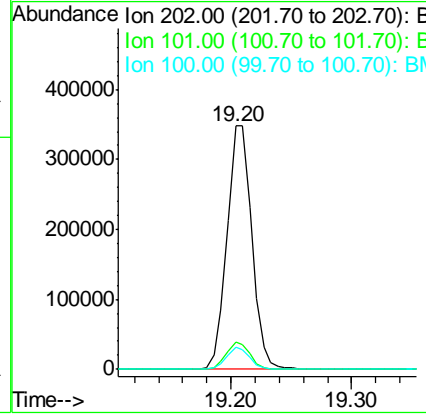
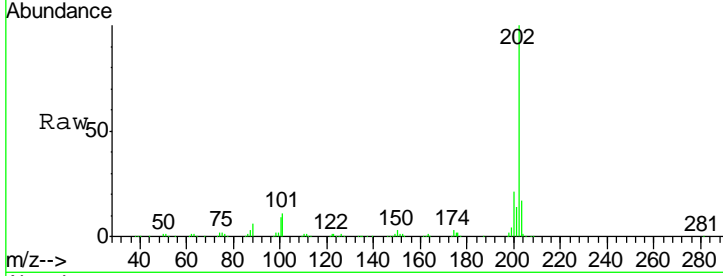




#74  
 Fluoranthene  
 Concen: 23.80 ng/ul  
 RT: 19.20 min Scan# 2808  
 Delta R.T. -0.01 min  
 Lab File: BM005449.D  
 Acq: 14 May 2016 04:32

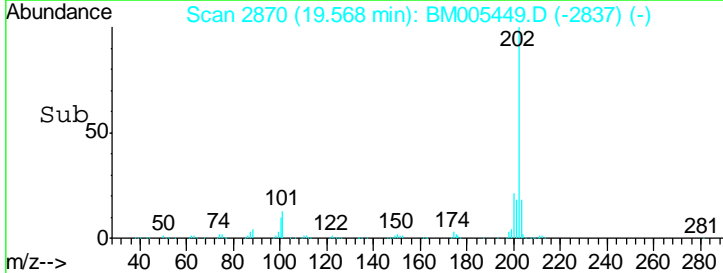
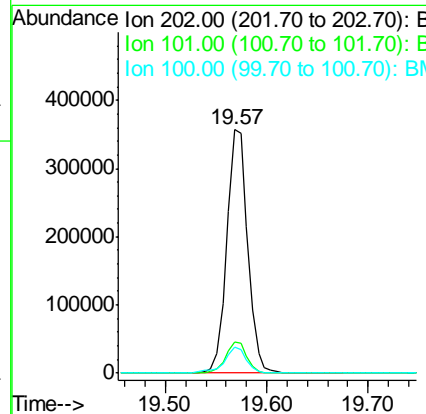
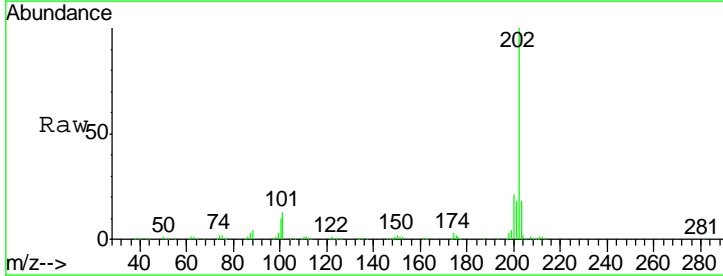
Instrument :  
 BNA\_M  
 ClientSampled :  
 SST02035

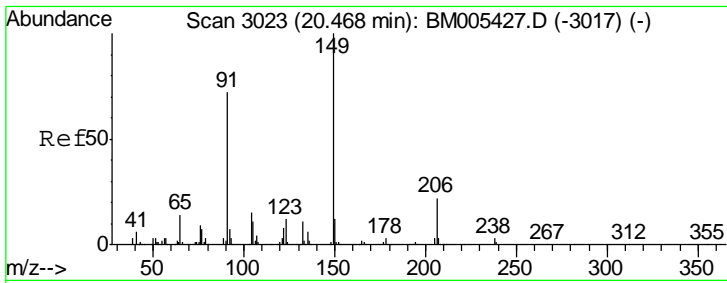
Tgt Ion	Resp	Lower	Upper
202	495696		
101	11.1	9.2	13.8
100	8.9	7.1	10.7



#77  
 Pyrene  
 Concen: 20.02 ng/ul  
 RT: 19.57 min Scan# 2870  
 Delta R.T. -0.01 min  
 Lab File: BM005449.D  
 Acq: 14 May 2016 04:32

Tgt Ion	Resp	Lower	Upper
202	509966		
101	13.0	10.8	16.2
100	10.5	8.4	12.6

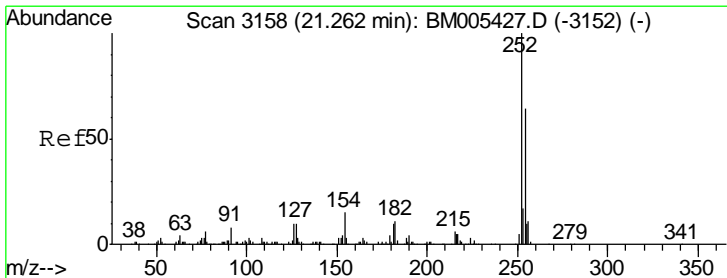
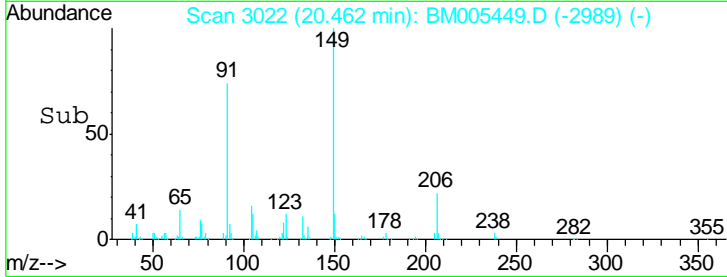
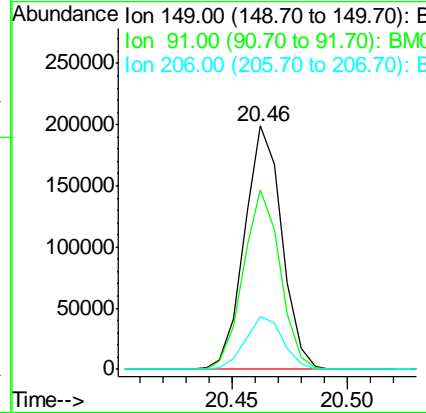
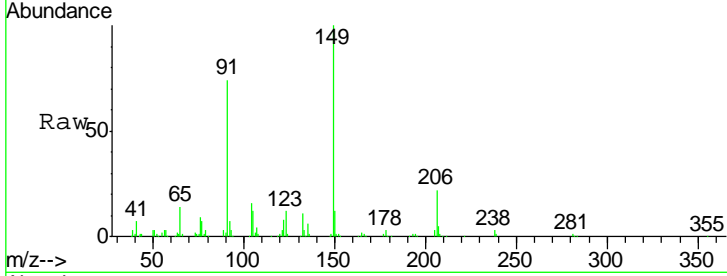




#78  
 Butylbenzylphthalate  
 Concen: 21.24 ng/ul  
 RT: 20.46 min Scan# 3022  
 Delta R.T. -0.01 min  
 Lab File: BM005449.D  
 Acq: 14 May 2016 04:32

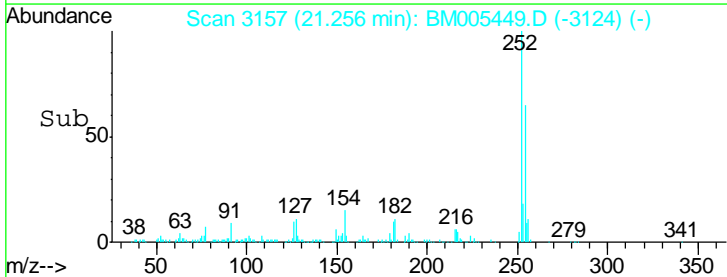
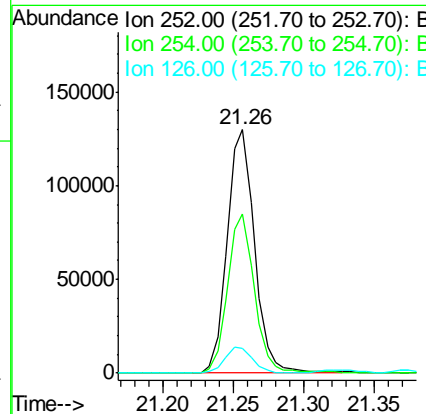
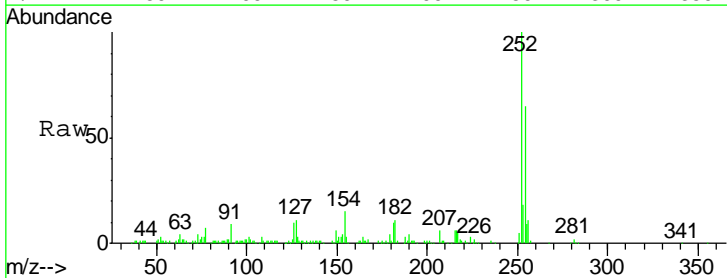
Instrument :  
 BNA\_M  
 ClientSampleID :  
 SSTD02035

Tgt Ion	Resp	Lower	Upper
149	100		
91	73.5	58.4	87.6
206	21.9	17.3	25.9

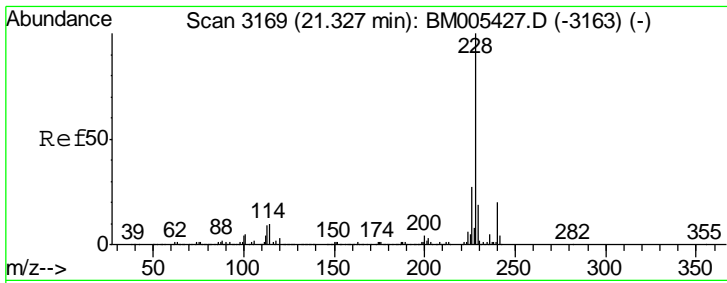


#79  
 3,3'-Dichlorobenzidine  
 Concen: 22.16 ng/ul  
 RT: 21.26 min Scan# 3157  
 Delta R.T. -0.01 min  
 Lab File: BM005449.D  
 Acq: 14 May 2016 04:32

Tgt Ion	Resp	Lower	Upper
252	100		
254	65.2	52.1	78.1
126	10.2	9.8	14.8



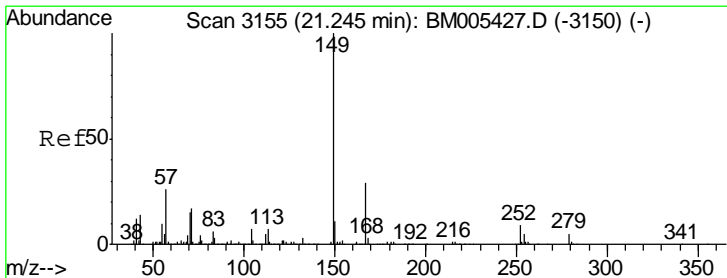
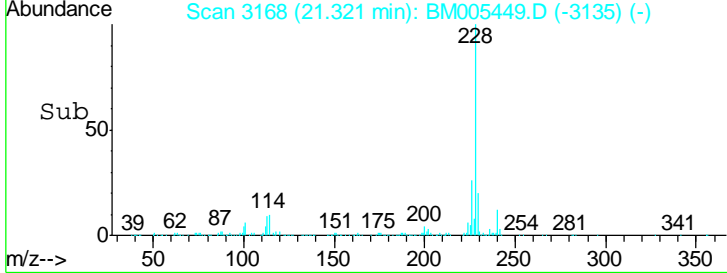
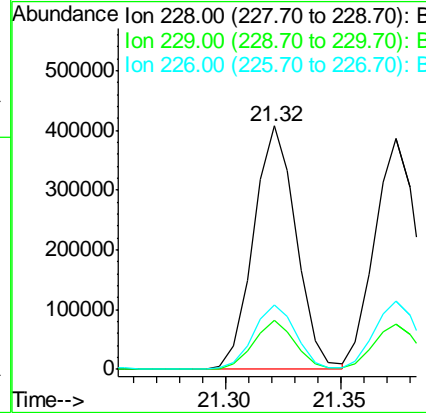
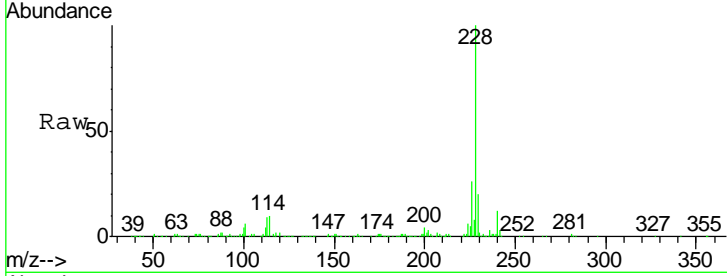




#80  
 Benzo(a)anthracene  
 Concen: 20.78 ng/ul  
 RT: 21.32 min Scan# 3168  
 Delta R.T. -0.01 min  
 Lab File: BM005449.D  
 Acq: 14 May 2016 04:32

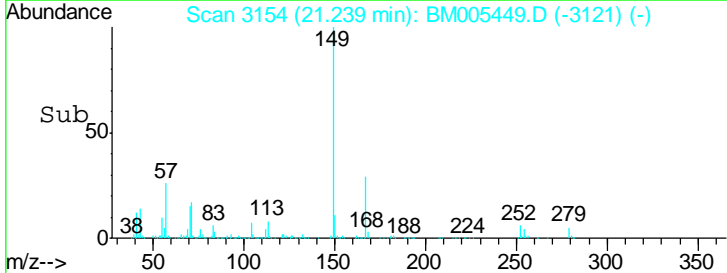
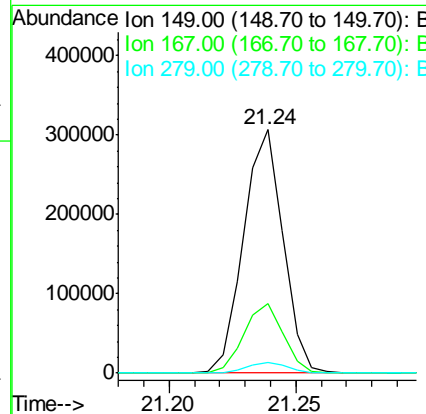
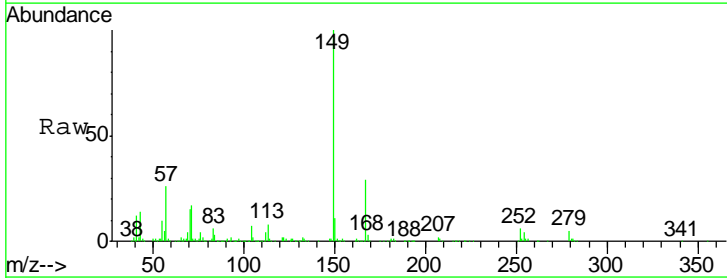
Instrument :  
 BNA\_M  
 ClientSampled :  
 SSTD02035

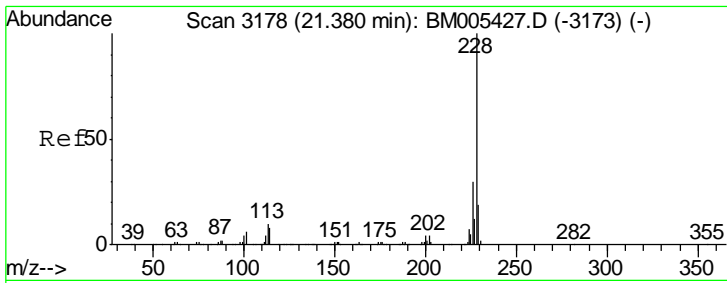
Tgt Ion	Resp	Lower	Upper
228	100		
229	19.9	15.5	23.3
226	26.5	21.8	32.8



#81  
 Bis(2-ethylhexyl)phthalate  
 Concen: 22.59 ng/ul  
 RT: 21.24 min Scan# 3154  
 Delta R.T. -0.01 min  
 Lab File: BM005449.D  
 Acq: 14 May 2016 04:32

Tgt Ion	Resp	Lower	Upper
149	100		
167	28.7	21.9	32.9
279	4.6	3.0	4.4#

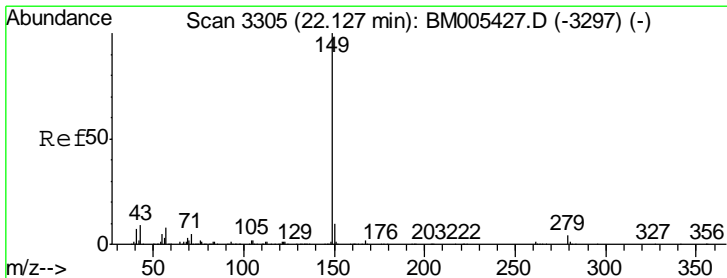
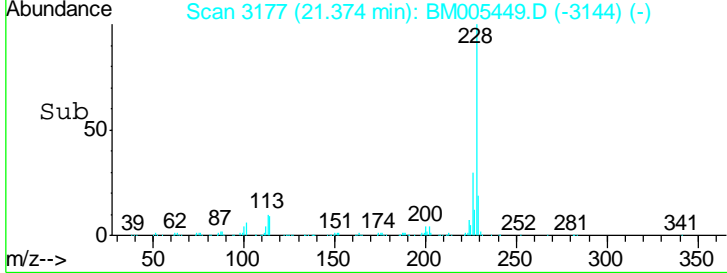
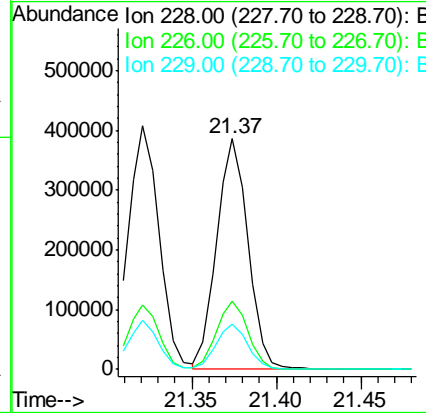
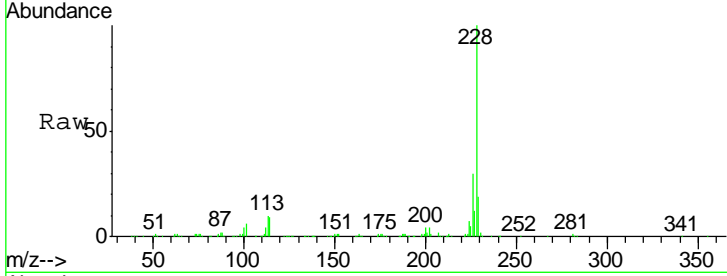




#82  
 Chrysene  
 Concen: 20.78 ng/ul  
 RT: 21.37 min Scan# 3177  
 Delta R.T. -0.01 min  
 Lab File: BM005449.D  
 Acq: 14 May 2016 04:32

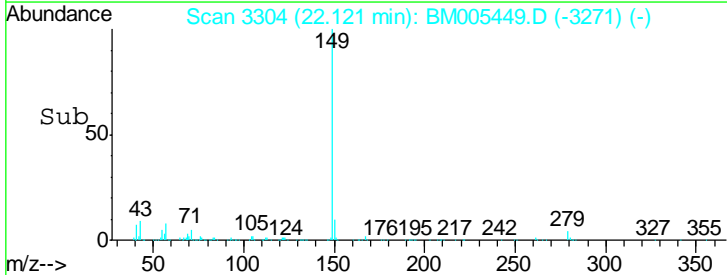
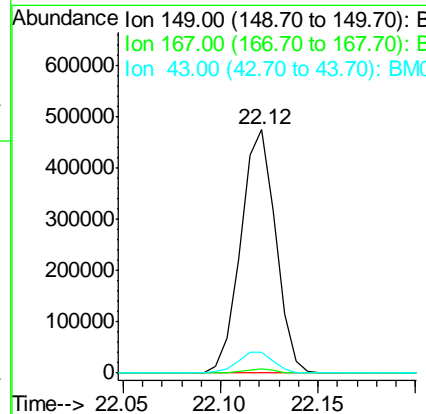
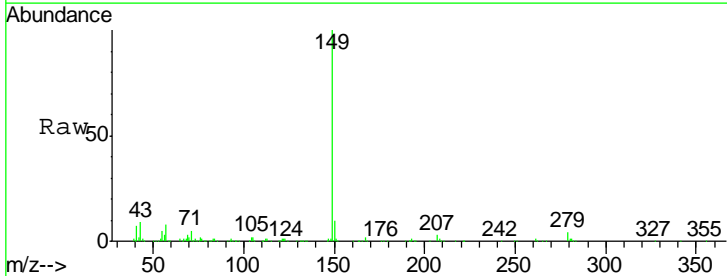
Instrument :  
 BNA\_M  
 ClientSampled :  
 SSTD02035

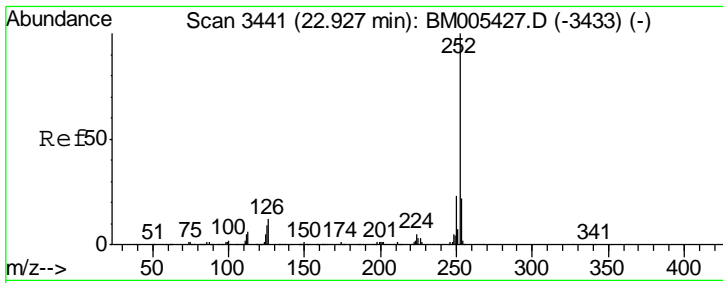
Tgt Ion	Resp	Lower	Upper
228	100		
226	29.6	23.6	35.4
229	19.4	15.4	23.0



#84  
 Di-n-octyl phthalate  
 Concen: 25.26 ng/ul  
 RT: 22.12 min Scan# 3304  
 Delta R.T. -0.01 min  
 Lab File: BM005449.D  
 Acq: 14 May 2016 04:32

Tgt Ion	Resp	Lower	Upper
149	100		
167	1.6	1.3	1.9
43	8.8	7.4	11.0

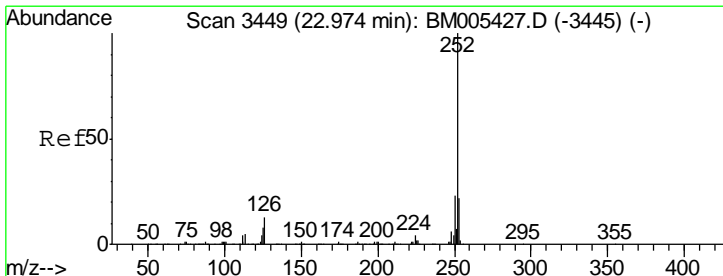
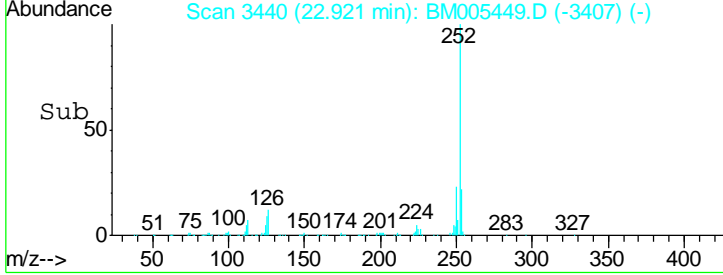
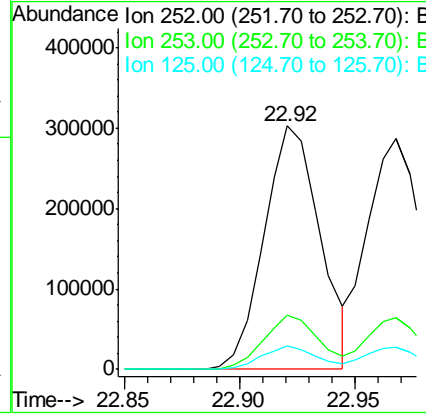
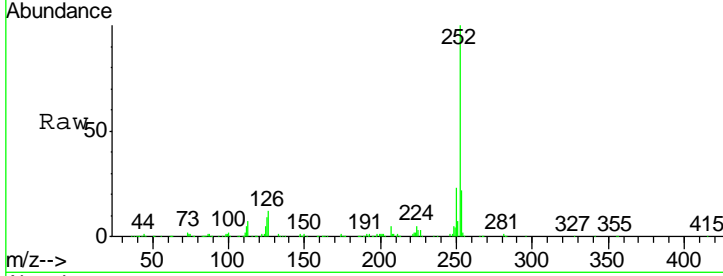




#85  
 Benzo(b)fluoranthene  
 Concen: 22.00 ng/ul  
 RT: 22.92 min Scan# 3440  
 Delta R.T. -0.01 min  
 Lab File: BM005449.D  
 Acq: 14 May 2016 04:32

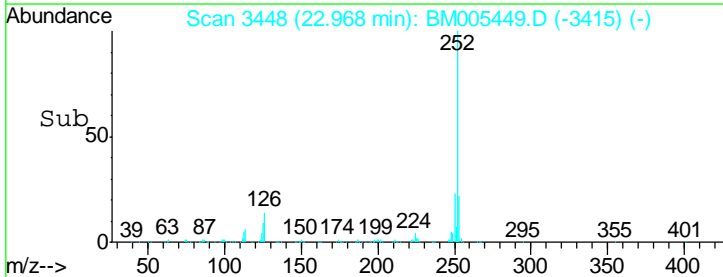
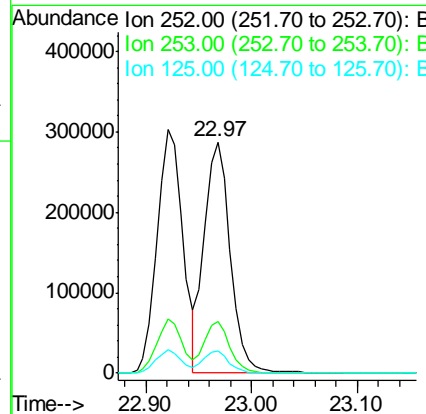
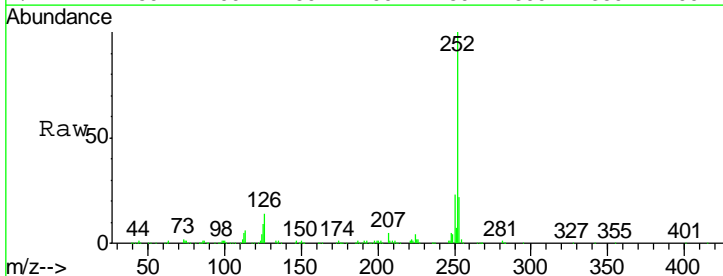
Instrument :  
 BNA\_M  
 ClientSampleId :  
 SST02035

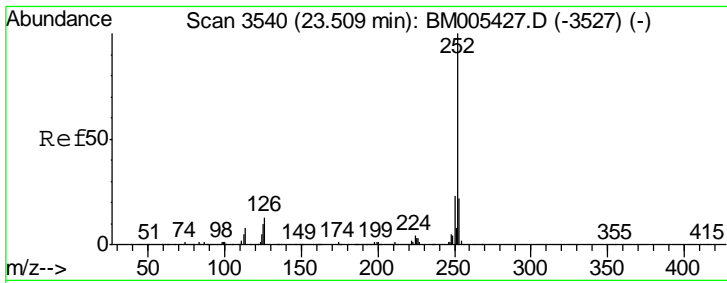
Tgt Ion	Resp	Lower	Upper
252	100		
253	22.4	17.4	26.2
125	9.4	8.4	12.6



#86  
 Benzo(k)fluoranthene  
 Concen: 22.46 ng/ul  
 RT: 22.97 min Scan# 3448  
 Delta R.T. -0.01 min  
 Lab File: BM005449.D  
 Acq: 14 May 2016 04:32

Tgt Ion	Resp	Lower	Upper
252	100		
253	22.2	17.3	25.9
125	9.4	8.0	12.0

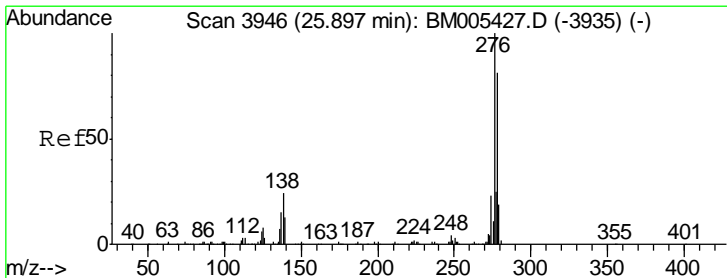
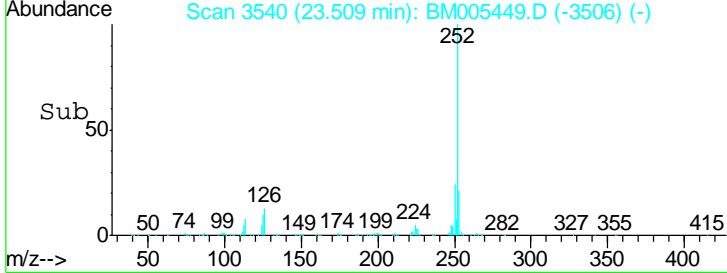
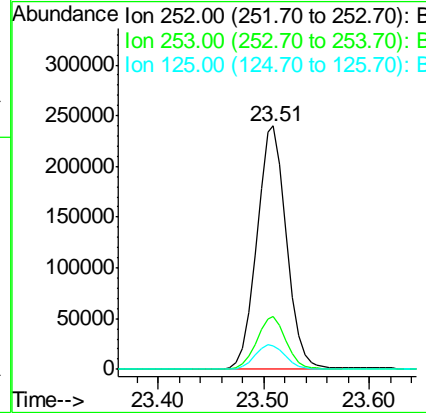
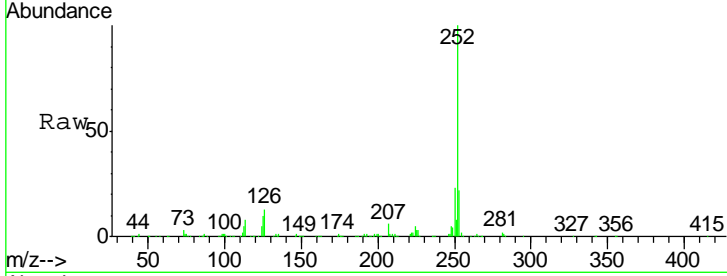




#88  
 Benzo(a)pyrene  
 Concen: 21.34 ng/ul  
 RT: 23.51 min Scan# 3540  
 Delta R.T. 0.00 min  
 Lab File: BM005449.D  
 Acq: 14 May 2016 04:32

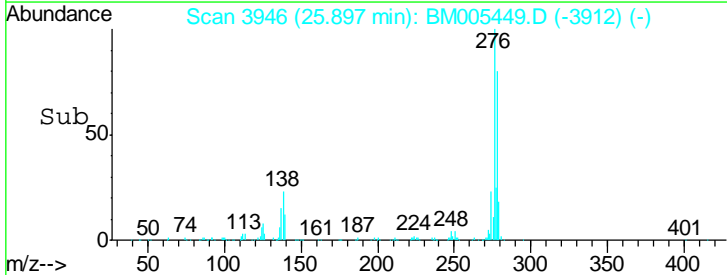
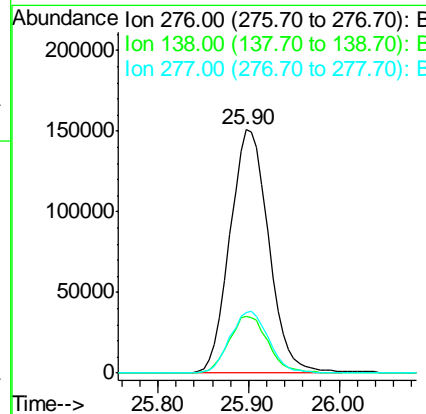
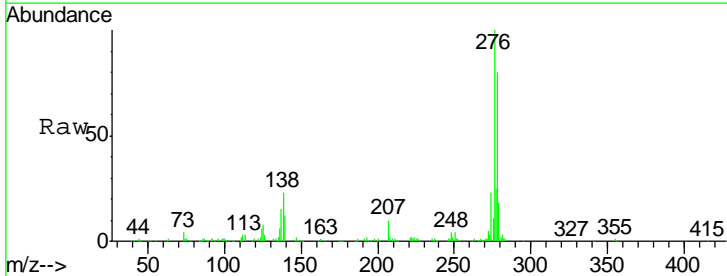
Instrument :  
 BNA\_M  
 ClientSampled :  
 SST02035

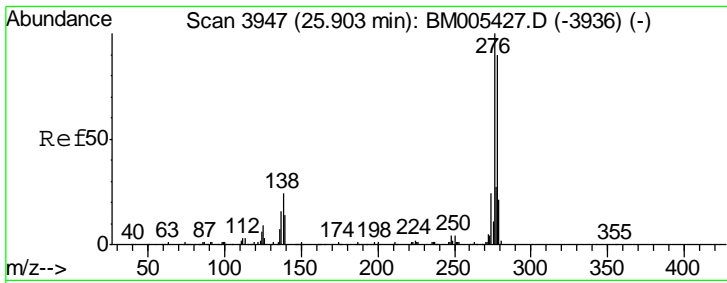
Tgt Ion	Resp	Lower	Upper
252	100		
253	21.6	17.5	26.3
125	9.9	8.7	13.1



#89  
 Indeno(1,2,3-cd)pyrene  
 Concen: 18.74 ng/ul  
 RT: 25.90 min Scan# 3946  
 Delta R.T. 0.00 min  
 Lab File: BM005449.D  
 Acq: 14 May 2016 04:32

Tgt Ion	Resp	Lower	Upper
276	100		
138	23.2	21.0	31.6
277	24.8	19.9	29.9

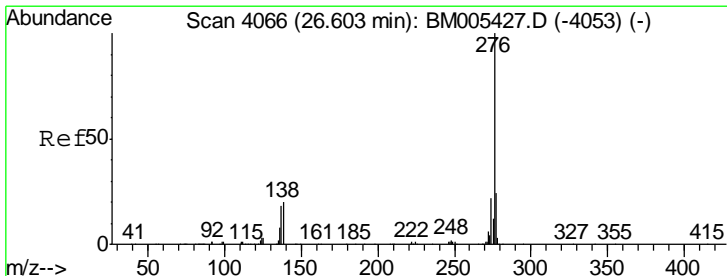
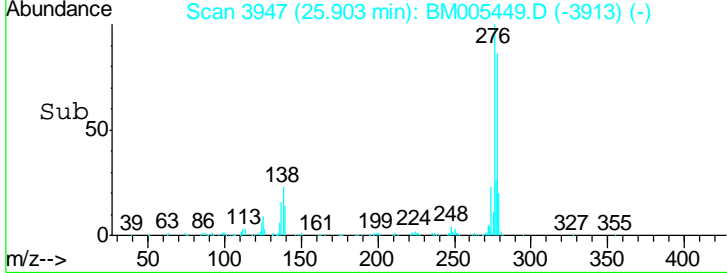
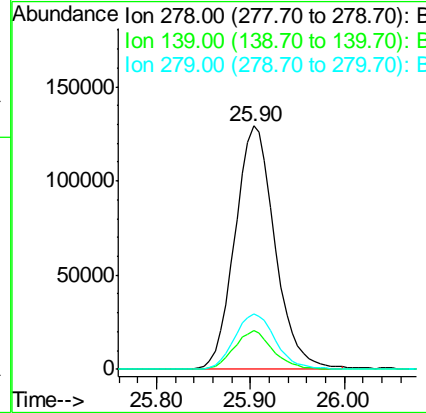
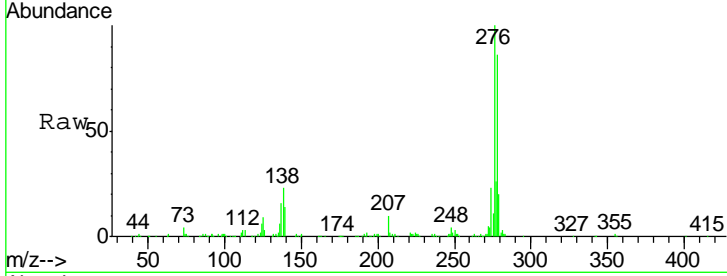




#90  
 Dibenzo(a,h)anthracene  
 Concen: 19.04 ng/ul  
 RT: 25.90 min Scan# 3947  
 Delta R.T. 0.00 min  
 Lab File: BM005449.D  
 Acq: 14 May 2016 04:32

Instrument :  
 BNA\_M  
 ClientSampled :  
 SSTD02035

Tgt Ion	Resp	Lower	Upper
278	381581		
278	100		
139	16.0	13.8	20.6
279	23.0	18.9	28.3



#91  
 Benzo(g,h,i)perylene  
 Concen: 17.94 ng/ul  
 RT: 26.60 min Scan# 4066  
 Delta R.T. 0.00 min  
 Lab File: BM005449.D  
 Acq: 14 May 2016 04:32

Tgt Ion	Resp	Lower	Upper
276	363938		
276	100		
138	20.2	18.2	27.4
277	23.6	19.4	29.2

