

Quantitation Report (QT Reviewed)

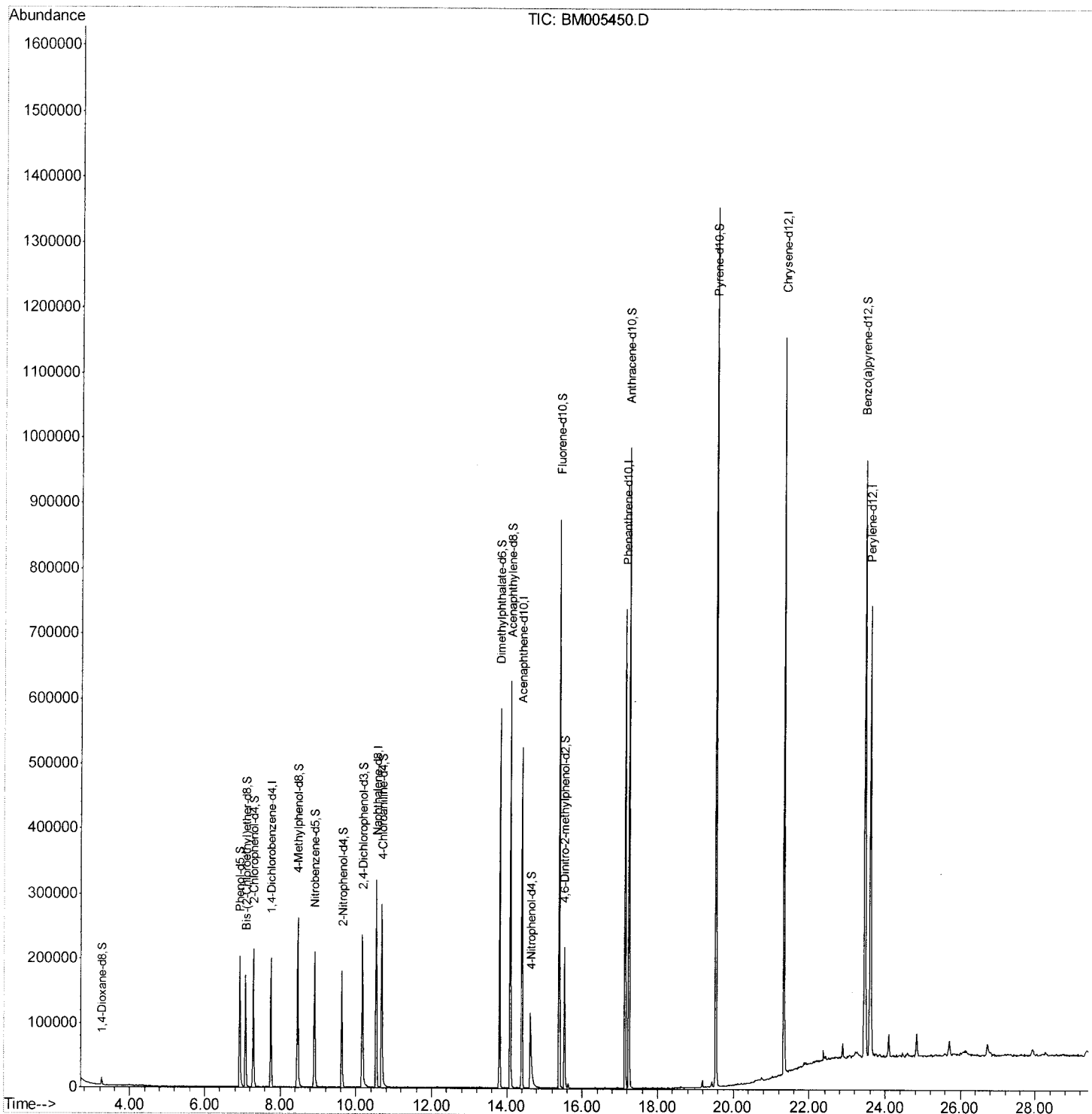
Data Path : Z:\HPCHEM1\BNA_M\DATA\BM051316\
 Data File : BM005450.D
 Acq On : 14 May 2016 05:09
 Operator : UM/SJ
 Sample : PB90330BL
 Misc :
 ALS Vial : 24 Sample Multiplier: 1

Instrument :
 BNA_M
 Client Sampled :
 SBLK30

Manual Integrations
 APPROVED

sohil
 5/16/2016 7:01:38 PM

Quant Time: May 16 03:48:11 2016
 Quant Method : Z:\HPCHEM1\BNA_M\METHODS\SOM02.2-EPA-BM050516.M
 Quant Title : SVOA CALIBRATION
 QLast Update : Sat May 14 00:15:57 2016
 Response via : Initial Calibration



Quantitation Report (Qedit)

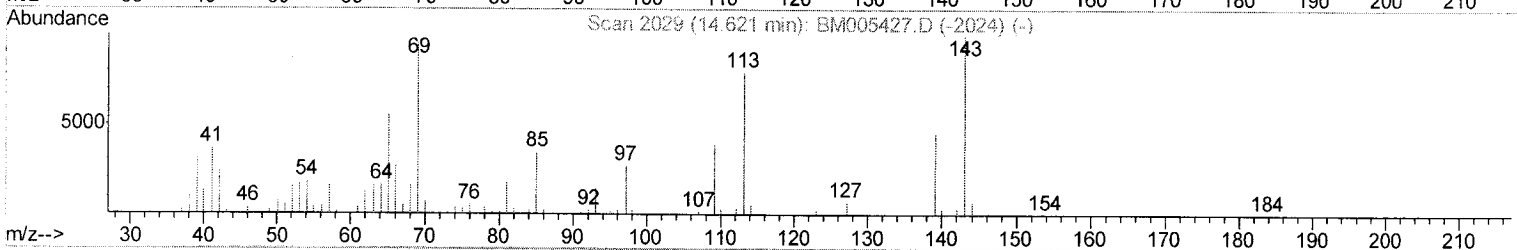
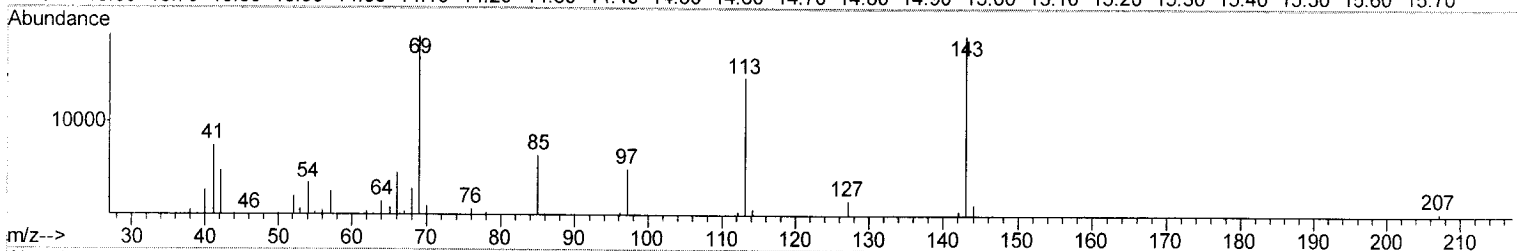
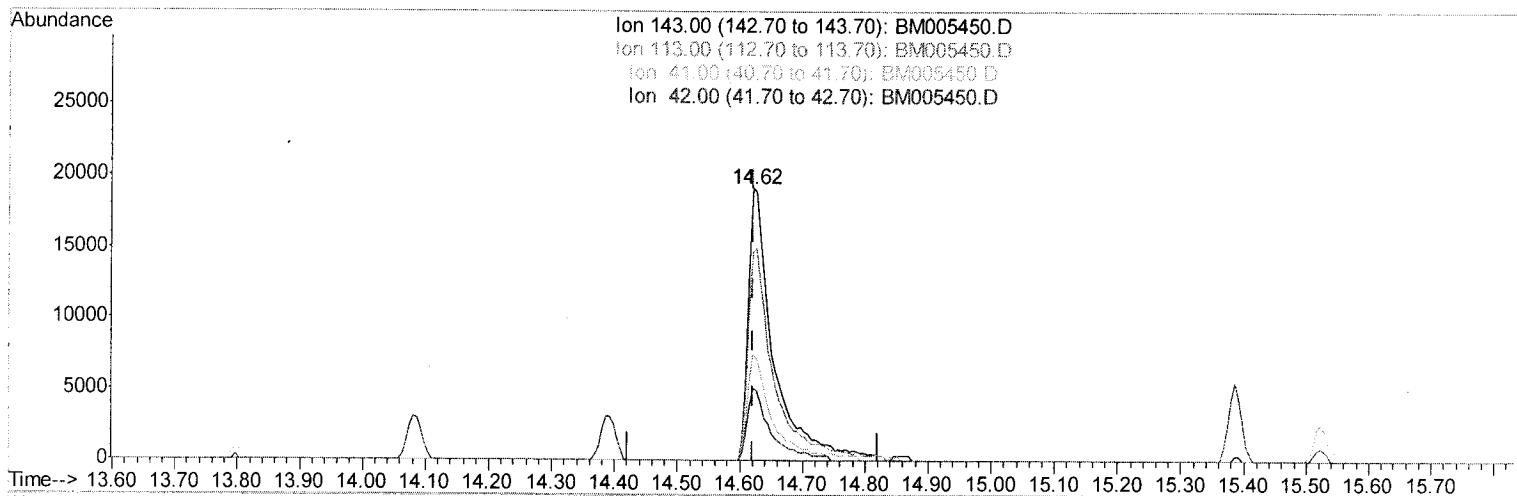
Data Path : Z:\HPCHEM1\BNA_M\DATA\BM051316\
 Data File : BM005450.D
 Acq On : 14 May 2016 05:09
 Operator : UM/SJ
 Sample : PB90330BL
 Misc :
 ALS Vial : 24 Sample Multiplier: 1

Instrument :
 BNA_M
 ClientSampleId :
 SBLK30

Manual Integrations
 APPROVED

sohil
 5/16/2016 7:01:38 PM

Quant Time: May 16 03:39:12 2016
 Quant Method : Z:\HPCHEM1\BNA_M\METHODS\SOM02.2-EPA-BM050516.M
 Quant Title : SVOA CALIBRATION
 QLast Update : Sat May 14 00:15:57 2016
 Response via : Initial Calibration



TIC: BM005450.D

(51) 4-Nitrophenol-d4 (S)

14.621min (-0.000) 20.79ng/ul m

response 54248

U.M
 05/17/16

Ion	Exp%	Act%
143.00	100	100
113.00	75.60	76.90
41.00	38.10	39.56
42.00	26.00	26.19

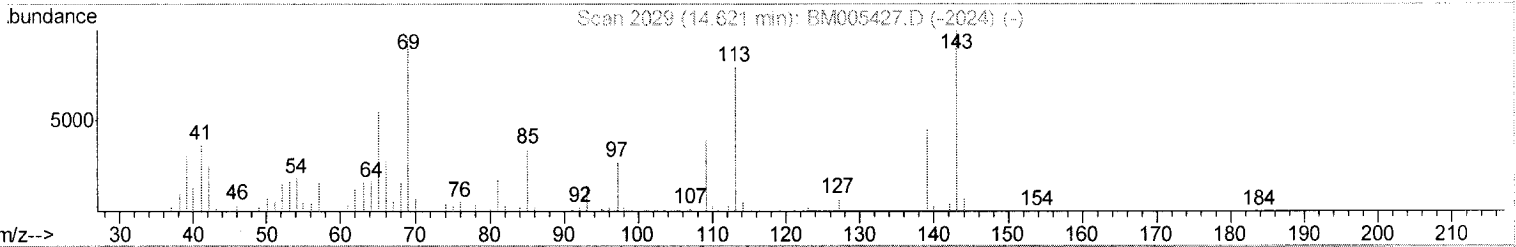
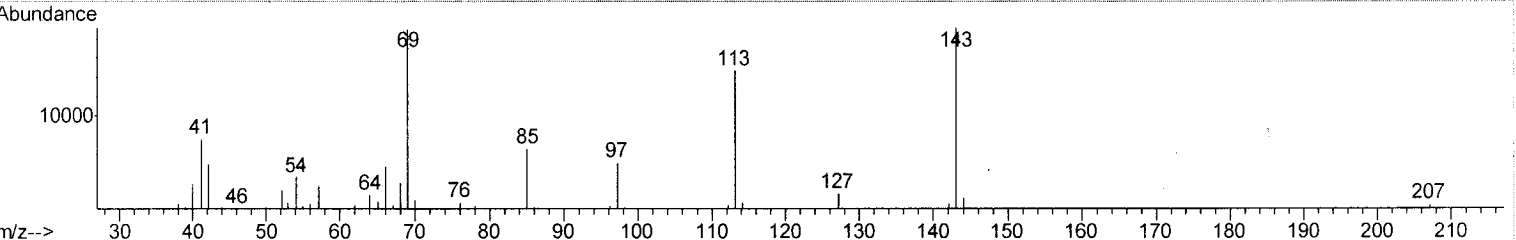
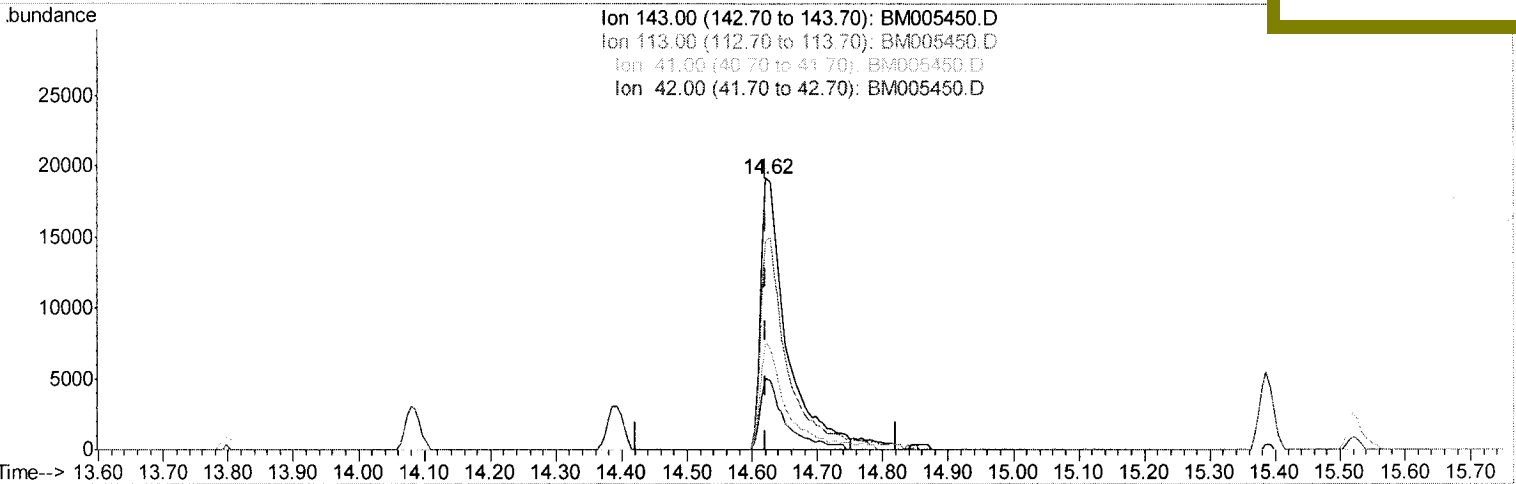
Quantitation Report (Qedit)

Data Path : Z:\HPCHEM1\BNA_M\DATA\BM051316\
 Data File : BM005450.D
 Acq On : 14 May 2016 05:09
 Operator : UM/SJ
 Sample : PB90330BL
 Misc :
 ALS Vial : 24 Sample Multiplier: 1

Instrument :
 BNA_M
 ClientSampleId :
 SBLK30

Quant Time: May 16 03:39:12 2016
 Quant Method : Z:\HPCHEM1\BNA_M\METHODS\SOM02.2-EPA-BM050516.M
 Quant Title : SVOA CALIBRATION
 QLast Update : Sat May 14 00:15:57 2016
 Response via : Initial Calibration

Manual Integrations
 APPROVED
 sohil
 5/16/2016 7:01:38 PM



TIC: BM005450.D

(51) 4-Nitrophenol-d4 (S)

14.621min (-0.000) 19.81ng/ul

response 51685

Ion	Exp%	Act%
143.00	100	100
113.00	75.60	76.90
41.00	38.10	39.56
42.00	26.00	26.19

Data Path : Z:\HPCHEM1\BNA_M\DATA\BM051316\
 Data File : BM005450.D
 Acq On : 14 May 2016 05:09
 Operator : UM/SJ
 Sample : PB90330BL
 Misc :
 ALS Vial : 24 Sample Multiplier: 1

Instrument :
 BNA_M
 Client Sampled :
 SBLK30

Quant Time: May 16 03:48:11 2016
 Quant Method : Z:\HPCHEM1\BNA_M\METHODS\SOM02.2-EPA-BM050516.M
 Quant Title : SVOA CALIBRATION
 QLast Update : Sat May 14 00:15:57 2016
 Response via : Initial Calibration

Manual Integrations
 APPROVED
 sohil
 5/16/2016 7:01:38 PM

Internal Standards	R.T.	QIon	Response	Conc	Units	Dev (Min)
1) 1,4-Dichlorobenzene-d4	7.75	152	57328	20.00	ng/ul	0.00
18) Naphthalene-d8	10.53	136	272738	20.00	ng/ul	0.00
35) Acenaphthene-d10	14.39	164	178342	20.00	ng/ul	0.00
61) Phenanthrene-d10	17.14	188	445752	20.00	ng/ul	0.00
75) Chrysene-d12	21.33	240	589547	20.00	ng/ul	0.00
83) Perylene-d12	23.60	264	522602	20.00	ng/ul	0.00

System Monitoring Compounds	R.T.	QIon	Response	Conc	Units	Dev (Min)
3) 1,4-Dioxane-d8	3.25	96	6741	5.53	ng/uL	0.00
5) Phenol-d5	6.93	99	129344	24.88	ng/ul	0.00
7) Bis-(2-Chloroethyl) ether-d	7.08	67	80175	27.03	ng/ul	0.00
9) 2-Chlorophenol-d4	7.29	132	104673	26.65	ng/ul	0.00
13) 4-Methylphenol-d8	8.46	113	109071	25.38	ng/ul	0.00
19) Nitrobenzene-d5	8.91	128	53589	27.52	ng/ul	0.00
22) 2-Nitrophenol-d4	9.63	143	61062	27.70	ng/ul	0.00
26) 2,4-Dichlorophenol-d3	10.17	165	101884	24.86	ng/ul	0.00
29) 4-Chloroaniline-d4	10.68	131	168619	34.19	ng/ul	0.00
43) Dimethylphthalate-d6	13.80	166	404729	28.31	ng/ul	0.00
46) Acenaphthylene-d8	14.09	160	467924	27.91	ng/ul	0.00
51) 4-Nitrophenol-d4	14.62	143	54248m	20.79	ng/ul	0.00
57) Fluorene-d10	15.39	176	350633	28.41	ng/ul	0.00
62) 4,6-Dinitro-2-methylphenol	15.52	200	51834	20.67	ng/ul	0.00
70) Anthracene-d10	17.24	188	578862	29.38	ng/ul	0.00
76) Pyrene-d10	19.54	212	718114	26.39	ng/ul	0.00
87) Benzo(a)pyrene-d12	23.46	264	683493	29.55	ng/ul	0.00

U.M
 05/17/16

Target Compounds Qvalue

(#) = qualifier out of range (m) = manual integration (+) = signals summed