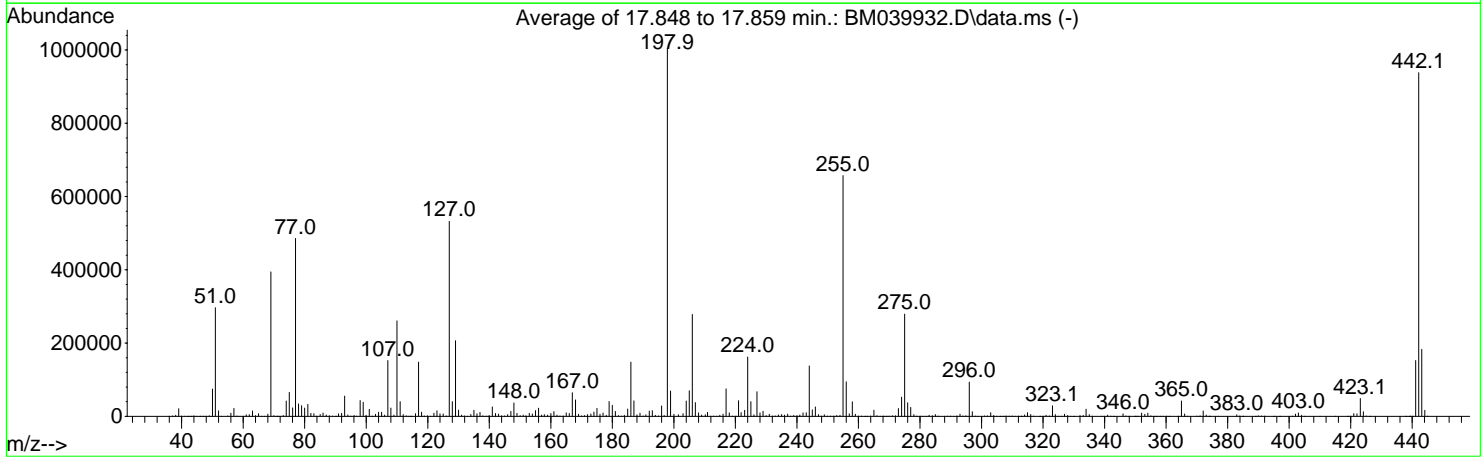
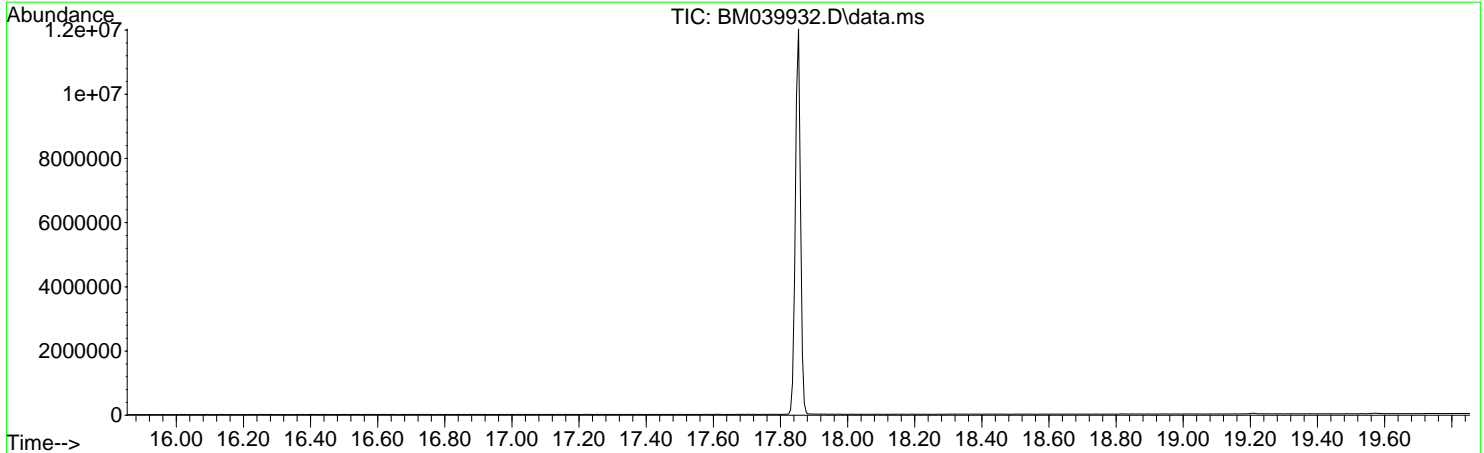


Data Path : Z:\svoasrv\HPCHEM1\BNA_M\Data\BM051623\
 Data File : BM039932.D
 Acq On : 16 May 2023 13:43
 Operator : CG/JU
 Sample : DFTPP121
 Misc :
 ALS Vial : 1 Sample Multiplier: 1

Instrument :
 BNA_M
 ClientSampleId :
 DFTPP121

Integration File: rteint.p

Method : Z:\SVOASRV\HPCHEM1\BNA_M\METHODS\SFAM-EPA-SIM-BM051623.M
 Title : ASP BNA STANDARDS FOR 5 POINT CALIBRATION
 Last Update : Wed May 17 01:47:11 2023



AutoFind: Scans 2518, 2519, 2520; Background Corrected with Scan 2511

| Target Mass | Rel. to Mass | Lower Limit% | Upper Limit% | Rel. Abn% | Raw Abn | Result Pass/Fail |
|-------------|--------------|--------------|--------------|-----------|---------|------------------|
| 51 | 198 | 10 | 80 | 29.6 | 296779 | PASS |
| 68 | 69 | 0.00 | 2 | 1.5 | 5994 | PASS |
| 69 | 198 | 0.00 | 100 | 39.3 | 394663 | PASS |
| 70 | 69 | 0.00 | 2 | 0.5 | 2086 | PASS |
| 127 | 198 | 10 | 80 | 53.0 | 532459 | PASS |
| 197 | 198 | 0.00 | 2 | 0.3 | 2825 | PASS |
| 198 | 198 | 100 | 100 | 100.0 | 1004139 | PASS |
| 199 | 198 | 5 | 9 | 6.9 | 69128 | PASS |
| 275 | 198 | 10 | 60 | 27.8 | 279211 | PASS |
| 365 | 198 | 1 | 100 | 4.2 | 42040 | PASS |
| 441 | 198 | 0.01 | 100 | 15.2 | 152272 | PASS |
| 442 | 198 | 50 | 100 | 93.4 | 938197 | PASS |
| 443 | 442 | 15 | 24 | 19.5 | 182933 | PASS |

| m/z | Abundance |
|--------|-----------|
| 35.90 | 152.0 |
| 39.00 | 188.0 |
| 40.00 | 1720.0 |
| 41.00 | 294.0 |
| 42.90 | 184.0 |
| 44.00 | 14922.0 |
| 44.90 | 172.0 |
| 47.00 | 156.0 |
| 49.10 | 378.0 |
| 50.90 | 224.0 |
| 55.00 | 219.0 |
| 67.10 | 174.0 |
| 69.10 | 174.0 |
| 72.90 | 527.0 |
| 78.00 | 237.0 |
| 81.00 | 167.0 |
| 83.90 | 524.0 |
| 85.90 | 300.0 |
| 96.10 | 298.0 |
| 114.80 | 263.0 |
| 117.10 | 179.0 |
| 118.80 | 165.0 |
| 132.90 | 513.0 |
| 147.00 | 269.0 |
| 190.80 | 338.0 |
| 207.00 | 3281.0 |
| 208.00 | 870.0 |
| 209.00 | 493.0 |
| 281.10 | 431.0 |
| 282.00 | 225.0 |

Instrument :
BNA_M
ClientSampleId :
DFTPP121

| m/z | Abundance |
|--------|-----------|
| 36.00 | 500.0 |
| 37.00 | 1621.0 |
| 38.00 | 3909.0 |
| 39.10 | 25952.0 |
| 40.00 | 2971.0 |
| 41.00 | 1034.0 |
| 43.00 | 394.0 |
| 44.00 | 16063.0 |
| 45.00 | 690.0 |
| 46.90 | 230.0 |
| 47.90 | 340.0 |
| 49.00 | 2345.0 |
| 50.00 | 91048.0 |
| 51.00 | 363904.0 |
| 52.00 | 19424.0 |
| 53.00 | 849.0 |
| 55.00 | 2079.0 |
| 56.00 | 10541.0 |
| 57.00 | 26952.0 |
| 58.00 | 1516.0 |
| 59.00 | 524.0 |
| 60.00 | 366.0 |
| 61.00 | 5401.0 |
| 62.00 | 6418.0 |
| 63.00 | 17856.0 |
| 64.00 | 2618.0 |
| 65.00 | 8738.0 |
| 66.00 | 584.0 |
| 67.00 | 627.0 |
| 68.00 | 7147.0 |
| 69.00 | 482048.0 |
| 70.00 | 2294.0 |
| 70.90 | 398.0 |
| 71.90 | 412.0 |
| 73.00 | 3793.0 |
| 74.00 | 50896.0 |
| 75.00 | 78592.0 |
| 76.00 | 27320.0 |
| 77.00 | 582592.0 |
| 78.00 | 41144.0 |
| 79.00 | 34528.0 |
| 80.00 | 28008.0 |
| 81.00 | 40872.0 |
| 82.00 | 10130.0 |
| 83.00 | 9062.0 |
| 84.00 | 1819.0 |
| 85.00 | 6333.0 |
| 86.00 | 11603.0 |
| 87.00 | 4981.0 |
| 88.00 | 2368.0 |
| 89.10 | 1003.0 |
| 91.00 | 8502.0 |
| 92.00 | 10096.0 |
| 93.00 | 65872.0 |
| 94.00 | 4682.0 |
| 95.00 | 1117.0 |
| 96.10 | 3051.0 |
| 96.90 | 1090.0 |
| 98.00 | 50944.0 |
| 99.00 | 45632.0 |
| 99.90 | 3451.0 |
| 101.00 | 22672.0 |
| 101.90 | 1365.0 |
| 103.00 | 6508.0 |
| 104.00 | 13058.0 |
| 105.00 | 13067.0 |
| 106.00 | 4041.0 |
| 107.00 | 180096.0 |
| 108.00 | 27552.0 |
| 109.00 | 3831.0 |
| 110.00 | 306304.0 |
| 111.00 | 47800.0 |
| 112.00 | 5910.0 |
| 113.00 | 1973.0 |
| 113.80 | 276.0 |
| 114.20 | 324.0 |
| 115.00 | 845.0 |
| 116.00 | 8580.0 |
| 117.00 | 171840.0 |
| 118.00 | 14022.0 |
| 119.00 | 1764.0 |
| 119.90 | 1872.0 |
| 121.00 | 927.0 |
| 122.00 | 9767.0 |
| 123.00 | 18056.0 |
| 124.00 | 7864.0 |
| 125.00 | 8045.0 |
| 126.00 | 1637.0 |
| 127.00 | 612096.0 |
| 128.00 | 47168.0 |
| 129.00 | 236608.0 |
| 130.00 | 19768.0 |

Instrument :
BNA_M
ClientSampleId :
DFTPP121

| | |
|--------|-----------|
| 131.00 | 4212.0 |
| 132.00 | 1681.0 |
| 132.90 | 1120.0 |
| 134.00 | 5838.0 |
| 135.00 | 17544.0 |
| 136.00 | 8009.0 |
| 137.00 | 12533.0 |
| 137.90 | 1904.0 |
| 139.00 | 1018.0 |
| 140.00 | 2725.0 |
| 141.00 | 29320.0 |
| 142.00 | 9524.0 |
| 143.00 | 6253.0 |
| 144.00 | 1944.0 |
| 145.00 | 1668.0 |
| 145.90 | 5404.0 |
| 147.00 | 15395.0 |
| 148.00 | 41448.0 |
| 149.00 | 9850.0 |
| 150.10 | 2671.0 |
| 151.10 | 3883.0 |
| 151.90 | 2014.0 |
| 153.00 | 9136.0 |
| 154.00 | 7521.0 |
| 155.00 | 17640.0 |
| 156.00 | 24216.0 |
| 157.00 | 3621.0 |
| 157.90 | 5757.0 |
| 159.00 | 3652.0 |
| 160.00 | 8934.0 |
| 161.00 | 14578.0 |
| 162.00 | 3840.0 |
| 163.00 | 1211.0 |
| 164.00 | 1212.0 |
| 165.00 | 10557.0 |
| 166.00 | 9058.0 |
| 167.00 | 71192.0 |
| 168.00 | 51120.0 |
| 169.00 | 6444.0 |
| 170.00 | 1929.0 |
| 171.00 | 2013.0 |
| 172.00 | 4809.0 |
| 173.00 | 7644.0 |
| 174.00 | 13453.0 |
| 175.00 | 24280.0 |
| 176.00 | 6711.0 |
| 177.00 | 10380.0 |
| 178.00 | 3682.0 |
| 178.90 | 43904.0 |
| 180.00 | 34032.0 |
| 181.00 | 14952.0 |
| 182.00 | 2279.0 |
| 182.90 | 1195.0 |
| 183.90 | 3133.0 |
| 185.00 | 21472.0 |
| 186.00 | 157568.0 |
| 187.00 | 45424.0 |
| 188.00 | 4686.0 |
| 189.00 | 9440.0 |
| 190.00 | 1531.0 |
| 190.90 | 4602.0 |
| 192.00 | 15452.0 |
| 193.00 | 17144.0 |
| 194.00 | 3476.0 |
| 194.90 | 1452.0 |
| 196.00 | 29376.0 |
| 197.90 | 1059328.0 |
| 198.90 | 72464.0 |
| 200.00 | 6395.0 |
| 201.50 | 5324.0 |
| 202.90 | 8438.0 |
| 204.00 | 43560.0 |
| 205.00 | 72464.0 |
| 206.00 | 288512.0 |
| 207.00 | 43176.0 |
| 208.00 | 11271.0 |
| 209.00 | 4008.0 |
| 210.20 | 4461.0 |
| 210.90 | 10995.0 |
| 212.90 | 940.0 |
| 214.00 | 390.0 |
| 215.00 | 3055.0 |
| 216.00 | 6103.0 |
| 217.00 | 77800.0 |
| 218.00 | 9933.0 |
| 219.00 | 918.0 |
| 221.00 | 43024.0 |
| 221.90 | 10880.0 |
| 223.00 | 18088.0 |
| 224.00 | 165184.0 |
| 225.00 | 40520.0 |
| 226.00 | 4473.0 |
| 227.00 | 68000.0 |
| 228.00 | 9878.0 |
| 229.00 | 14592.0 |
| 229.90 | 2078.0 |

Instrument :
BNA_M
ClientSampleId :
DFTPP121

| | |
|--------|----------|
| 231.00 | 5044.0 |
| 232.00 | 870.0 |
| 232.90 | 983.0 |
| 234.00 | 3872.0 |
| 235.00 | 5221.0 |
| 235.90 | 3607.0 |
| 237.00 | 7046.0 |
| 237.90 | 672.0 |
| 238.90 | 2904.0 |
| 240.00 | 2158.0 |
| 241.00 | 3813.0 |
| 242.00 | 9095.0 |
| 243.00 | 10260.0 |
| 244.00 | 138368.0 |
| 245.00 | 17944.0 |
| 246.00 | 25960.0 |
| 247.00 | 4771.0 |
| 247.90 | 1233.0 |
| 248.90 | 4348.0 |
| 250.00 | 940.0 |
| 251.00 | 1020.0 |
| 251.90 | 1014.0 |
| 253.00 | 2441.0 |
| 254.00 | 3286.0 |
| 255.00 | 641664.0 |
| 256.00 | 93800.0 |
| 257.00 | 7708.0 |
| 258.00 | 39984.0 |
| 259.00 | 6089.0 |
| 260.00 | 997.0 |
| 261.00 | 1256.0 |
| 263.00 | 508.0 |
| 264.10 | 752.0 |
| 265.00 | 16744.0 |
| 266.00 | 2386.0 |
| 267.00 | 234.0 |
| 267.90 | 270.0 |
| 269.00 | 178.0 |
| 269.90 | 788.0 |
| 271.00 | 1657.0 |
| 272.00 | 1737.0 |
| 273.00 | 20200.0 |
| 274.00 | 50152.0 |
| 275.00 | 263488.0 |
| 276.00 | 35184.0 |
| 277.00 | 23264.0 |
| 278.00 | 5224.0 |
| 279.00 | 922.0 |
| 280.90 | 950.0 |
| 282.10 | 749.0 |
| 283.00 | 3119.0 |
| 284.00 | 1676.0 |
| 285.00 | 4819.0 |
| 286.00 | 845.0 |
| 288.00 | 247.0 |
| 289.00 | 695.0 |
| 290.00 | 729.0 |
| 291.00 | 701.0 |
| 292.00 | 1189.0 |
| 293.00 | 5766.0 |
| 293.90 | 1599.0 |
| 294.90 | 1495.0 |
| 296.00 | 85216.0 |
| 297.00 | 12409.0 |
| 298.00 | 631.0 |
| 298.90 | 164.0 |
| 300.90 | 1097.0 |
| 301.90 | 1311.0 |
| 303.00 | 8964.0 |
| 304.00 | 2712.0 |
| 304.90 | 320.0 |
| 306.00 | 178.0 |
| 308.00 | 905.0 |
| 309.00 | 762.0 |
| 309.90 | 1149.0 |
| 310.90 | 389.0 |
| 311.90 | 349.0 |
| 312.90 | 617.0 |
| 314.00 | 3338.0 |
| 315.00 | 9290.0 |
| 316.00 | 4582.0 |
| 317.00 | 842.0 |
| 320.00 | 364.0 |
| 321.00 | 2621.0 |
| 322.00 | 1241.0 |
| 323.10 | 24248.0 |
| 324.00 | 3854.0 |
| 325.00 | 653.0 |
| 326.00 | 553.0 |
| 327.00 | 4831.0 |
| 328.00 | 2546.0 |
| 329.00 | 340.0 |
| 332.00 | 1939.0 |
| 333.00 | 2404.0 |
| 334.00 | 16960.0 |
| 335.00 | 4421.0 |

Instrument :
BNA_M
ClientSampleId :
DFTPP121

| | |
|--------|----------|
| 335.90 | 430.0 |
| 339.00 | 209.0 |
| 339.80 | 403.0 |
| 341.00 | 2863.0 |
| 342.10 | 859.0 |
| 343.00 | 217.0 |
| 346.00 | 6208.0 |
| 347.00 | 1361.0 |
| 347.90 | 210.0 |
| 349.80 | 177.0 |
| 350.90 | 222.0 |
| 352.00 | 7381.0 |
| 353.00 | 4850.0 |
| 354.10 | 7418.0 |
| 355.00 | 1556.0 |
| 357.90 | 227.0 |
| 359.00 | 509.0 |
| 359.90 | 202.0 |
| 360.90 | 176.0 |
| 363.80 | 247.0 |
| 365.00 | 36072.0 |
| 366.00 | 5302.0 |
| 366.90 | 283.0 |
| 370.00 | 665.0 |
| 370.90 | 1650.0 |
| 372.10 | 13275.0 |
| 373.00 | 3064.0 |
| 373.90 | 271.0 |
| 376.90 | 485.0 |
| 383.00 | 3443.0 |
| 384.00 | 1002.0 |
| 384.90 | 367.0 |
| 385.10 | 366.0 |
| 390.00 | 1735.0 |
| 390.90 | 892.0 |
| 392.00 | 688.0 |
| 401.00 | 989.0 |
| 402.10 | 4509.0 |
| 403.00 | 7170.0 |
| 404.00 | 2647.0 |
| 405.00 | 509.0 |
| 410.00 | 190.0 |
| 415.00 | 260.0 |
| 421.00 | 5902.0 |
| 422.10 | 5604.0 |
| 423.10 | 36552.0 |
| 424.10 | 10463.0 |
| 425.10 | 1601.0 |
| 426.10 | 153.0 |
| 437.90 | 165.0 |
| 439.00 | 203.0 |
| 441.10 | 111920.0 |
| 442.10 | 696768.0 |
| 443.10 | 136576.0 |
| 444.10 | 14133.0 |
| 445.10 | 834.0 |

Instrument :
BNA_M
ClientSampleId :
DFTPP121

| m/z | Abundance |
|--------|-----------|
| 36.00 | 412.0 |
| 37.10 | 1587.0 |
| 38.10 | 3681.0 |
| 39.10 | 25264.0 |
| 40.00 | 3100.0 |
| 41.00 | 924.0 |
| 42.90 | 287.0 |
| 44.00 | 17240.0 |
| 44.90 | 1000.0 |
| 45.90 | 170.0 |
| 46.90 | 217.0 |
| 47.90 | 353.0 |
| 49.00 | 2746.0 |
| 50.00 | 88640.0 |
| 51.00 | 347904.0 |
| 52.00 | 17872.0 |
| 53.10 | 757.0 |
| 55.00 | 1782.0 |
| 56.00 | 10789.0 |
| 57.00 | 25624.0 |
| 58.00 | 1232.0 |
| 58.90 | 393.0 |
| 59.90 | 332.0 |
| 61.00 | 5322.0 |
| 62.00 | 5718.0 |
| 63.00 | 17296.0 |
| 64.00 | 2288.0 |
| 65.00 | 9592.0 |
| 66.00 | 468.0 |
| 66.90 | 708.0 |
| 68.00 | 7388.0 |
| 69.00 | 469824.0 |
| 70.00 | 2599.0 |
| 71.10 | 329.0 |
| 71.90 | 437.0 |
| 73.10 | 3638.0 |
| 74.00 | 48760.0 |
| 75.00 | 78696.0 |
| 76.10 | 28216.0 |
| 77.00 | 580352.0 |
| 78.00 | 40800.0 |
| 79.00 | 34600.0 |
| 80.00 | 26200.0 |
| 81.00 | 38008.0 |
| 82.00 | 10009.0 |
| 83.00 | 8994.0 |
| 83.90 | 1662.0 |
| 85.00 | 6065.0 |
| 86.00 | 11011.0 |
| 87.00 | 5221.0 |
| 88.00 | 1896.0 |
| 89.00 | 1070.0 |
| 90.00 | 331.0 |
| 91.00 | 8419.0 |
| 92.00 | 10008.0 |
| 93.00 | 66264.0 |
| 94.00 | 4126.0 |
| 95.00 | 696.0 |
| 96.00 | 3762.0 |
| 97.00 | 1258.0 |
| 98.00 | 51168.0 |
| 99.00 | 46536.0 |
| 100.00 | 3822.0 |
| 101.00 | 24144.0 |
| 102.10 | 1165.0 |
| 103.00 | 6795.0 |
| 104.00 | 13016.0 |
| 105.00 | 14276.0 |
| 106.00 | 4375.0 |
| 107.00 | 182208.0 |
| 108.00 | 27032.0 |
| 109.00 | 4378.0 |
| 110.00 | 315328.0 |
| 111.00 | 48432.0 |
| 112.00 | 5731.0 |
| 113.00 | 1834.0 |
| 113.90 | 407.0 |
| 114.30 | 351.0 |
| 115.00 | 833.0 |
| 116.00 | 8832.0 |
| 117.00 | 179712.0 |
| 118.00 | 12559.0 |
| 118.90 | 1711.0 |
| 120.00 | 2146.0 |
| 120.90 | 769.0 |
| 122.00 | 11006.0 |
| 123.00 | 19440.0 |
| 124.00 | 8862.0 |
| 125.00 | 8042.0 |
| 126.00 | 1506.0 |
| 127.00 | 658176.0 |
| 128.00 | 49152.0 |

Instrument :
BNA_M
ClientSampleId :
DFTPP121

| | |
|--------|-----------|
| 129.00 | 252736.0 |
| 130.00 | 21352.0 |
| 131.00 | 4349.0 |
| 131.90 | 1930.0 |
| 133.00 | 1527.0 |
| 134.00 | 7053.0 |
| 135.00 | 20432.0 |
| 136.00 | 8121.0 |
| 137.00 | 13399.0 |
| 137.90 | 2070.0 |
| 139.00 | 1079.0 |
| 139.90 | 3094.0 |
| 141.00 | 32304.0 |
| 142.00 | 9266.0 |
| 143.00 | 8450.0 |
| 144.00 | 1870.0 |
| 144.90 | 1844.0 |
| 146.00 | 5997.0 |
| 147.00 | 17216.0 |
| 148.00 | 45864.0 |
| 149.00 | 10125.0 |
| 150.00 | 2249.0 |
| 151.00 | 4011.0 |
| 151.80 | 2606.0 |
| 153.00 | 11274.0 |
| 154.00 | 7649.0 |
| 155.00 | 19736.0 |
| 156.00 | 29248.0 |
| 157.00 | 5008.0 |
| 157.90 | 6148.0 |
| 158.90 | 4337.0 |
| 160.00 | 9907.0 |
| 161.00 | 17216.0 |
| 162.00 | 4372.0 |
| 163.00 | 1562.0 |
| 164.00 | 1455.0 |
| 165.00 | 12245.0 |
| 166.00 | 10292.0 |
| 167.00 | 80472.0 |
| 168.00 | 54592.0 |
| 169.00 | 6808.0 |
| 170.00 | 1850.0 |
| 170.90 | 2833.0 |
| 171.90 | 6069.0 |
| 173.00 | 8453.0 |
| 174.00 | 14484.0 |
| 175.00 | 27736.0 |
| 176.00 | 6904.0 |
| 176.90 | 10377.0 |
| 178.00 | 4011.0 |
| 179.00 | 51424.0 |
| 180.00 | 37592.0 |
| 181.00 | 16984.0 |
| 181.90 | 2570.0 |
| 182.90 | 1492.0 |
| 183.90 | 3438.0 |
| 185.00 | 24752.0 |
| 186.00 | 189888.0 |
| 187.00 | 54488.0 |
| 188.00 | 5972.0 |
| 189.00 | 11026.0 |
| 190.00 | 1950.0 |
| 191.00 | 5991.0 |
| 192.00 | 17952.0 |
| 193.00 | 19072.0 |
| 194.00 | 4627.0 |
| 195.00 | 1797.0 |
| 196.00 | 37056.0 |
| 196.80 | 5771.0 |
| 197.90 | 1292800.0 |
| 198.90 | 89808.0 |
| 200.00 | 6860.0 |
| 201.40 | 5687.0 |
| 203.00 | 9523.0 |
| 204.00 | 53632.0 |
| 205.00 | 89520.0 |
| 206.00 | 360256.0 |
| 207.00 | 51328.0 |
| 208.00 | 12170.0 |
| 209.00 | 4953.0 |
| 210.20 | 5520.0 |
| 211.00 | 14235.0 |
| 212.90 | 903.0 |
| 214.00 | 266.0 |
| 214.90 | 4108.0 |
| 216.00 | 8169.0 |
| 216.90 | 96384.0 |
| 218.00 | 12494.0 |
| 219.00 | 1473.0 |
| 221.00 | 56832.0 |
| 221.80 | 14793.0 |
| 223.00 | 20216.0 |
| 224.00 | 206592.0 |
| 225.00 | 51848.0 |
| 226.00 | 5500.0 |
| 227.00 | 87608.0 |

Instrument :
BNA_M
ClientSampleId :
DFTPP121

| | |
|--------|----------|
| 228.00 | 12067.0 |
| 229.00 | 18424.0 |
| 230.00 | 2966.0 |
| 231.00 | 8795.0 |
| 232.00 | 1587.0 |
| 233.00 | 1583.0 |
| 233.90 | 5129.0 |
| 235.00 | 6084.0 |
| 236.00 | 4662.0 |
| 237.00 | 7311.0 |
| 238.00 | 1121.0 |
| 239.00 | 3203.0 |
| 240.00 | 2761.0 |
| 240.90 | 5208.0 |
| 242.00 | 12575.0 |
| 243.00 | 13835.0 |
| 244.00 | 178880.0 |
| 245.00 | 24368.0 |
| 246.00 | 32536.0 |
| 247.00 | 5768.0 |
| 247.90 | 1357.0 |
| 248.90 | 5927.0 |
| 249.90 | 1325.0 |
| 250.90 | 1617.0 |
| 252.00 | 1412.0 |
| 252.90 | 3313.0 |
| 254.00 | 3825.0 |
| 255.00 | 853056.0 |
| 256.00 | 122616.0 |
| 257.00 | 9367.0 |
| 258.00 | 50952.0 |
| 259.00 | 7048.0 |
| 260.00 | 1451.0 |
| 261.00 | 1319.0 |
| 262.10 | 187.0 |
| 262.90 | 683.0 |
| 264.00 | 1087.0 |
| 265.00 | 22472.0 |
| 266.00 | 2863.0 |
| 267.10 | 504.0 |
| 267.80 | 256.0 |
| 270.00 | 1022.0 |
| 271.00 | 2209.0 |
| 272.00 | 2352.0 |
| 273.00 | 27848.0 |
| 274.00 | 68056.0 |
| 275.00 | 368192.0 |
| 276.00 | 48072.0 |
| 277.00 | 31712.0 |
| 278.00 | 5945.0 |
| 278.90 | 1190.0 |
| 279.90 | 219.0 |
| 281.00 | 1035.0 |
| 282.00 | 1249.0 |
| 283.00 | 3413.0 |
| 284.00 | 2306.0 |
| 285.00 | 5929.0 |
| 286.00 | 1285.0 |
| 288.00 | 347.0 |
| 289.10 | 1014.0 |
| 290.00 | 1227.0 |
| 291.00 | 521.0 |
| 292.00 | 1930.0 |
| 293.00 | 8624.0 |
| 294.00 | 1740.0 |
| 295.00 | 2341.0 |
| 296.00 | 122920.0 |
| 297.00 | 16488.0 |
| 298.10 | 1098.0 |
| 298.90 | 428.0 |
| 301.00 | 1325.0 |
| 302.00 | 1900.0 |
| 303.00 | 13275.0 |
| 304.00 | 3593.0 |
| 304.90 | 557.0 |
| 307.00 | 292.0 |
| 308.00 | 1822.0 |
| 309.00 | 1119.0 |
| 310.00 | 1540.0 |
| 311.00 | 310.0 |
| 312.10 | 371.0 |
| 313.10 | 1120.0 |
| 314.00 | 4999.0 |
| 315.00 | 13478.0 |
| 316.00 | 7200.0 |
| 317.00 | 1397.0 |
| 318.90 | 222.0 |
| 320.00 | 431.0 |
| 321.00 | 3899.0 |
| 322.00 | 2106.0 |
| 323.00 | 38432.0 |
| 324.00 | 7039.0 |
| 325.00 | 688.0 |
| 325.90 | 712.0 |
| 326.90 | 7474.0 |
| 328.00 | 3409.0 |

Instrument :
BNA_M
ClientSampleId :
DFTPP121

| | |
|--------|-----------|
| 328.90 | 576.0 |
| 330.00 | 178.0 |
| 332.00 | 2919.0 |
| 333.10 | 3917.0 |
| 334.00 | 25896.0 |
| 335.00 | 5878.0 |
| 336.00 | 750.0 |
| 339.00 | 668.0 |
| 339.90 | 563.0 |
| 341.00 | 4310.0 |
| 342.00 | 1450.0 |
| 342.90 | 290.0 |
| 346.00 | 8337.0 |
| 347.00 | 1709.0 |
| 347.80 | 198.0 |
| 350.10 | 246.0 |
| 350.90 | 480.0 |
| 352.10 | 11624.0 |
| 353.10 | 7616.0 |
| 354.00 | 11773.0 |
| 355.10 | 2005.0 |
| 356.00 | 158.0 |
| 359.00 | 762.0 |
| 360.00 | 218.0 |
| 360.90 | 240.0 |
| 363.80 | 220.0 |
| 365.00 | 52824.0 |
| 366.00 | 8464.0 |
| 367.00 | 566.0 |
| 370.00 | 1346.0 |
| 371.10 | 2083.0 |
| 372.10 | 20312.0 |
| 373.00 | 4391.0 |
| 374.10 | 538.0 |
| 377.00 | 600.0 |
| 383.00 | 6218.0 |
| 384.00 | 1400.0 |
| 385.20 | 420.0 |
| 389.00 | 176.0 |
| 390.00 | 2318.0 |
| 391.00 | 1479.0 |
| 392.10 | 1307.0 |
| 394.90 | 302.0 |
| 396.90 | 262.0 |
| 401.00 | 1550.0 |
| 402.00 | 8287.0 |
| 403.00 | 12342.0 |
| 404.10 | 3939.0 |
| 405.10 | 735.0 |
| 410.00 | 331.0 |
| 415.00 | 670.0 |
| 421.00 | 10267.0 |
| 422.10 | 9193.0 |
| 423.10 | 65632.0 |
| 424.10 | 16712.0 |
| 425.10 | 1618.0 |
| 437.90 | 246.0 |
| 439.20 | 204.0 |
| 440.00 | 350.0 |
| 441.10 | 200640.0 |
| 442.10 | 1234432.0 |
| 443.10 | 244032.0 |
| 444.10 | 21288.0 |
| 445.10 | 1126.0 |

Instrument :
BNA_M
ClientSampleId :
DFTPP121

| m/z | Abundance |
|--------|-----------|
| 36.00 | 350.0 |
| 37.10 | 680.0 |
| 38.00 | 1996.0 |
| 39.00 | 12532.0 |
| 40.00 | 2135.0 |
| 41.00 | 700.0 |
| 42.00 | 302.0 |
| 43.00 | 462.0 |
| 44.00 | 16832.0 |
| 44.90 | 506.0 |
| 46.80 | 194.0 |
| 48.00 | 152.0 |
| 49.10 | 1625.0 |
| 50.00 | 45000.0 |
| 51.00 | 179200.0 |
| 52.10 | 9091.0 |
| 53.00 | 351.0 |
| 55.00 | 1201.0 |
| 56.00 | 5434.0 |
| 57.00 | 12745.0 |
| 58.10 | 714.0 |
| 58.90 | 362.0 |
| 59.90 | 302.0 |
| 61.00 | 2708.0 |
| 62.00 | 2981.0 |
| 63.00 | 9374.0 |
| 64.10 | 1169.0 |
| 65.00 | 4454.0 |
| 66.00 | 491.0 |
| 66.90 | 335.0 |
| 68.00 | 3446.0 |
| 69.00 | 232640.0 |
| 70.00 | 1365.0 |
| 71.00 | 162.0 |
| 73.00 | 2068.0 |
| 74.00 | 26440.0 |
| 75.00 | 39944.0 |
| 76.00 | 13730.0 |
| 77.00 | 293888.0 |
| 78.00 | 20760.0 |
| 79.00 | 18864.0 |
| 80.00 | 14186.0 |
| 81.00 | 19760.0 |
| 82.00 | 4310.0 |
| 83.00 | 4790.0 |
| 84.00 | 1220.0 |
| 85.00 | 3057.0 |
| 86.00 | 5809.0 |
| 87.00 | 2460.0 |
| 87.90 | 1074.0 |
| 89.00 | 620.0 |
| 90.00 | 167.0 |
| 91.00 | 4387.0 |
| 92.00 | 4696.0 |
| 93.00 | 35048.0 |
| 94.00 | 2813.0 |
| 95.00 | 540.0 |
| 96.00 | 2090.0 |
| 97.00 | 539.0 |
| 98.00 | 27176.0 |
| 99.00 | 23896.0 |
| 100.00 | 2018.0 |
| 101.00 | 11534.0 |
| 101.90 | 672.0 |
| 103.00 | 3807.0 |
| 104.00 | 7800.0 |
| 105.00 | 7324.0 |
| 105.90 | 2108.0 |
| 107.00 | 94728.0 |
| 108.00 | 13775.0 |
| 109.00 | 1829.0 |
| 110.00 | 160256.0 |
| 111.00 | 24280.0 |
| 111.90 | 2731.0 |
| 113.00 | 1297.0 |
| 113.80 | 258.0 |
| 115.00 | 438.0 |
| 115.90 | 4881.0 |
| 117.00 | 92824.0 |
| 118.00 | 7085.0 |
| 118.90 | 891.0 |
| 119.90 | 979.0 |
| 121.00 | 369.0 |
| 122.00 | 6003.0 |
| 123.00 | 9059.0 |
| 124.00 | 4685.0 |
| 124.90 | 3988.0 |
| 126.10 | 937.0 |
| 127.00 | 327104.0 |
| 128.00 | 24048.0 |
| 129.00 | 129992.0 |
| 130.00 | 10710.0 |

Instrument :
BNA_M
ClientSampleId :
DFTPP121

| | |
|--------|----------|
| 131.00 | 2291.0 |
| 131.90 | 1098.0 |
| 133.00 | 899.0 |
| 133.90 | 3424.0 |
| 135.00 | 11404.0 |
| 136.00 | 4881.0 |
| 137.00 | 6908.0 |
| 137.90 | 1195.0 |
| 139.00 | 472.0 |
| 140.00 | 1598.0 |
| 141.00 | 15626.0 |
| 141.90 | 5478.0 |
| 143.00 | 3838.0 |
| 144.00 | 1005.0 |
| 145.00 | 784.0 |
| 145.90 | 3263.0 |
| 147.00 | 9421.0 |
| 148.00 | 23384.0 |
| 149.00 | 4891.0 |
| 150.00 | 1709.0 |
| 150.90 | 2199.0 |
| 152.00 | 1252.0 |
| 153.00 | 4918.0 |
| 153.90 | 4180.0 |
| 155.00 | 10338.0 |
| 156.00 | 13923.0 |
| 156.90 | 2481.0 |
| 157.90 | 3127.0 |
| 159.00 | 2488.0 |
| 160.00 | 4934.0 |
| 161.00 | 8029.0 |
| 162.00 | 2200.0 |
| 162.90 | 872.0 |
| 164.00 | 836.0 |
| 165.00 | 6574.0 |
| 165.90 | 4480.0 |
| 167.00 | 41896.0 |
| 168.00 | 29800.0 |
| 169.00 | 3624.0 |
| 169.90 | 1010.0 |
| 170.90 | 1318.0 |
| 171.90 | 3264.0 |
| 173.00 | 4024.0 |
| 174.00 | 7378.0 |
| 175.00 | 13764.0 |
| 176.00 | 3794.0 |
| 177.00 | 6355.0 |
| 177.90 | 1886.0 |
| 178.90 | 26848.0 |
| 180.00 | 18968.0 |
| 181.00 | 8622.0 |
| 182.00 | 1210.0 |
| 183.00 | 575.0 |
| 183.90 | 2275.0 |
| 185.00 | 13722.0 |
| 186.00 | 97496.0 |
| 187.00 | 27776.0 |
| 188.00 | 2539.0 |
| 189.00 | 6377.0 |
| 189.90 | 957.0 |
| 191.00 | 3455.0 |
| 192.00 | 9533.0 |
| 193.00 | 10633.0 |
| 193.90 | 1622.0 |
| 195.10 | 975.0 |
| 196.00 | 18480.0 |
| 196.90 | 2704.0 |
| 197.90 | 660288.0 |
| 198.90 | 45112.0 |
| 199.90 | 3408.0 |
| 201.40 | 2584.0 |
| 203.00 | 4992.0 |
| 204.00 | 29168.0 |
| 205.00 | 47432.0 |
| 206.00 | 185536.0 |
| 207.00 | 28320.0 |
| 208.00 | 7618.0 |
| 209.00 | 3061.0 |
| 210.20 | 3096.0 |
| 211.00 | 7734.0 |
| 211.90 | 1329.0 |
| 212.90 | 384.0 |
| 213.90 | 220.0 |
| 214.90 | 1878.0 |
| 216.00 | 4011.0 |
| 216.90 | 50840.0 |
| 218.00 | 6846.0 |
| 219.00 | 986.0 |
| 220.00 | 708.0 |
| 221.00 | 28872.0 |
| 221.90 | 6475.0 |
| 223.00 | 11724.0 |
| 224.00 | 114128.0 |
| 225.00 | 28816.0 |
| 226.00 | 2808.0 |
| 227.00 | 46088.0 |

Instrument :
BNA_M
ClientSampleId :
DFTPP121

| | |
|--------|----------|
| 228.00 | 6502.0 |
| 229.00 | 9068.0 |
| 230.00 | 1281.0 |
| 231.00 | 3795.0 |
| 232.00 | 602.0 |
| 232.90 | 949.0 |
| 234.00 | 2859.0 |
| 235.00 | 3749.0 |
| 236.00 | 2674.0 |
| 237.00 | 4336.0 |
| 237.80 | 735.0 |
| 239.00 | 1687.0 |
| 239.90 | 1503.0 |
| 240.90 | 3000.0 |
| 242.00 | 6960.0 |
| 243.00 | 6590.0 |
| 244.00 | 95824.0 |
| 245.00 | 11387.0 |
| 246.00 | 19176.0 |
| 246.90 | 3373.0 |
| 247.90 | 668.0 |
| 249.00 | 2972.0 |
| 250.00 | 618.0 |
| 250.80 | 736.0 |
| 252.00 | 754.0 |
| 253.00 | 1855.0 |
| 254.00 | 2153.0 |
| 255.00 | 476736.0 |
| 256.00 | 66920.0 |
| 257.00 | 4182.0 |
| 258.00 | 28576.0 |
| 259.00 | 3997.0 |
| 260.00 | 643.0 |
| 261.00 | 836.0 |
| 263.00 | 396.0 |
| 263.90 | 677.0 |
| 264.90 | 11916.0 |
| 265.90 | 1575.0 |
| 267.00 | 202.0 |
| 268.10 | 241.0 |
| 270.00 | 462.0 |
| 271.00 | 1113.0 |
| 271.90 | 1037.0 |
| 273.00 | 16314.0 |
| 274.00 | 38712.0 |
| 275.00 | 205952.0 |
| 276.00 | 27728.0 |
| 277.00 | 18240.0 |
| 277.90 | 2965.0 |
| 278.90 | 644.0 |
| 281.00 | 778.0 |
| 282.00 | 548.0 |
| 282.90 | 2247.0 |
| 284.00 | 1628.0 |
| 285.00 | 3798.0 |
| 285.90 | 967.0 |
| 287.80 | 239.0 |
| 289.00 | 779.0 |
| 289.90 | 499.0 |
| 290.90 | 486.0 |
| 292.00 | 955.0 |
| 293.00 | 4803.0 |
| 293.90 | 1106.0 |
| 295.00 | 1155.0 |
| 296.00 | 72032.0 |
| 297.00 | 9786.0 |
| 297.90 | 739.0 |
| 298.90 | 202.0 |
| 301.00 | 1040.0 |
| 302.00 | 1097.0 |
| 303.00 | 8537.0 |
| 304.00 | 1819.0 |
| 305.00 | 311.0 |
| 308.00 | 868.0 |
| 308.80 | 533.0 |
| 309.90 | 1000.0 |
| 310.90 | 262.0 |
| 312.00 | 403.0 |
| 313.00 | 551.0 |
| 314.00 | 3939.0 |
| 314.90 | 7764.0 |
| 316.00 | 4605.0 |
| 317.00 | 427.0 |
| 320.00 | 383.0 |
| 320.90 | 2152.0 |
| 322.00 | 931.0 |
| 323.00 | 23664.0 |
| 324.00 | 4209.0 |
| 325.00 | 444.0 |
| 326.00 | 450.0 |
| 327.00 | 4741.0 |
| 328.00 | 1788.0 |
| 328.90 | 383.0 |
| 332.00 | 1749.0 |
| 333.00 | 2077.0 |
| 334.00 | 16155.0 |

Instrument :
BNA_M
ClientSampleId :
DFTPP121

| | |
|--------|----------|
| 335.00 | 3582.0 |
| 335.90 | 518.0 |
| 338.90 | 364.0 |
| 339.90 | 446.0 |
| 341.00 | 3032.0 |
| 342.00 | 818.0 |
| 342.80 | 223.0 |
| 346.00 | 6047.0 |
| 346.90 | 1061.0 |
| 350.00 | 322.0 |
| 350.90 | 358.0 |
| 352.00 | 7138.0 |
| 353.00 | 5184.0 |
| 354.00 | 7573.0 |
| 355.00 | 1334.0 |
| 356.80 | 156.0 |
| 358.00 | 258.0 |
| 359.00 | 736.0 |
| 361.00 | 271.0 |
| 363.70 | 153.0 |
| 365.00 | 37224.0 |
| 366.00 | 5902.0 |
| 366.90 | 320.0 |
| 370.00 | 628.0 |
| 371.00 | 1712.0 |
| 372.00 | 11526.0 |
| 373.10 | 2979.0 |
| 373.90 | 219.0 |
| 376.90 | 417.0 |
| 383.00 | 3814.0 |
| 383.90 | 1056.0 |
| 385.10 | 274.0 |
| 390.00 | 1754.0 |
| 391.10 | 1121.0 |
| 392.00 | 834.0 |
| 401.10 | 708.0 |
| 402.10 | 5479.0 |
| 403.00 | 7695.0 |
| 404.00 | 2651.0 |
| 405.00 | 491.0 |
| 410.00 | 336.0 |
| 415.10 | 429.0 |
| 418.90 | 185.0 |
| 419.80 | 161.0 |
| 421.00 | 6496.0 |
| 422.00 | 6274.0 |
| 423.10 | 44240.0 |
| 424.10 | 10979.0 |
| 425.00 | 1435.0 |
| 441.10 | 144256.0 |
| 442.10 | 883392.0 |
| 443.10 | 168192.0 |
| 444.10 | 14823.0 |
| 445.00 | 904.0 |

Instrument :
BNA_M
ClientSampleId :
DFTPP121