

Data Path : Z:\HPCHEM1\BNA\_M\DATA\BM051815\  
 Data File : BM001327.D  
 Acq On : 15 May 2015 14:26  
 Operator : TP/IZ  
 Sample : SSTDCCC001  
 Misc :  
 ALS Vial : 2 Sample Multiplier: 1

Instrument :  
 BNA\_M  
 ClientSampleId :  
 SSTDCCC001

Manual Integrations  
 APPROVED

apatel  
 5/18/2015 12:16:17 PM

Quant Time: May 16 01:49:33 2015  
 Quant Method : Z:\HPCHEM1\BNA\_M\METHODS\SIMPAH-BM051315.M  
 Quant Title : ASP BNA STANDARDS FOR 5 POINT CALIBRATION  
 QLast Update : Wed May 13 05:24:15 2015  
 Response via : Initial Calibration

Internal Standards	R.T.	QIon	Response	Conc	Units	Dev(Min)
1) 1,4-Dichlorobenzene-d4	7.43	152	13724	5.00	ng	-0.02
6) Naphthalene-d8	10.22	136	48391	5.00	ng	0.00
12) Acenaphthene-d10	14.12	164	24795	5.00	ng	0.00
18) Phenanthrene-d10	16.85	188	73958	5.00	ng	0.00
24) Chrysene-d12	21.07	240	45997	5.00	ng	-0.01
30) Perylene-d12	23.18	264	43375	5.00	ng	-0.01

## System Monitoring Compounds

4) 2-Fluorophenol	5.02	112	2573	0.96	ng	-0.02
5) Phenol-d6	6.63	99	2860	0.95	ng	0.00
7) Nitrobenzene-d5	8.60	82	2371	0.88	ng	0.00
13) 2,4,6-Tribromophenol	15.60	330	509	0.68	ng	-0.03
14) 2-Fluorobiphenyl	12.73	172	7443	0.97	ng	0.00
26) Terphenyl-d14	19.51	244	5672	0.92	ng	-0.01

## Target Compounds

Target Compounds	R.T.	QIon	Response	Conc	Units	Qvalue
2) 1,4-Dioxane	2.92	88	1649	0.92	ng	90
3) n-Nitrosodimethylamine	3.24	42	1560	1.00	ng	# 89
8) Nitrobenzene	8.64	77	2469	0.87	ng	100
9) Naphthalene	10.27	128	9985	0.97	ng	97
10) Hexachlorobutadiene	10.56	225	1951	0.97	ng	99
11) 2-Methylnaphthalene	11.90	142	6212m	0.93	ng	
15) Acenaphthylene	13.83	152	9692	0.95	ng	100
16) Acenaphthene	14.18	154	6222	0.95	ng	99
17) Fluorene	15.14	166	5698	0.96	ng	# 82
19) Hexachlorobenzene	16.18	284	3162	0.66	ng	# 85
20) Pentachlorophenol	16.52	266	733	0.91	ng	92
21) Phenanthrene	16.88	178	12584	1.12	ng	# 98
22) Anthracene	16.98	178	10876	0.99	ng	# 98
23) Fluoranthene	18.93	202	12365	0.70	ng	100
25) Pyrene	19.30	202	13125	0.92	ng	99
27) Benzo(a)anthracene	21.05	228	11566	0.93	ng	93
28) Chrysene	21.10	228	11980	0.95	ng	94
29) Indeno(1,2,3-cd)pyrene	25.26	276	13193	1.03	ng	100
31) Benzo(b)fluoranthene	22.55	252	11458	0.90	ng	98
32) Benzo(k)fluoranthene	22.59	252	11838	0.98	ng	98
33) Benzo(a)pyrene	23.08	252	10391	0.94	ng	99
34) Dibenzo(a,h)anthracene	25.28	278	10265	0.99	ng	99
35) Benzo(g,h,i)perylene	25.89	276	11234	0.99	ng	98

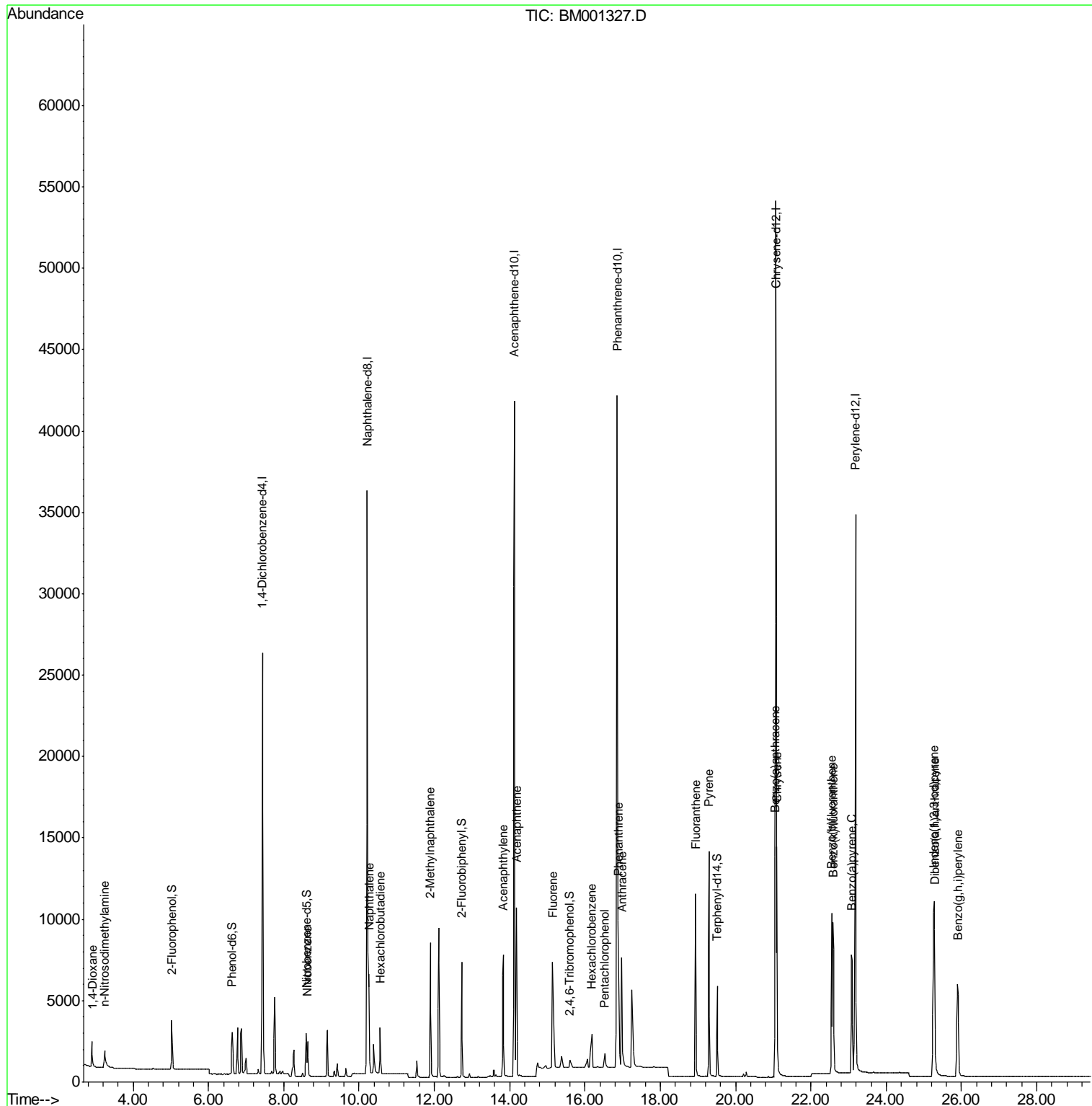
(#) = qualifier out of range (m) = manual integration (+) = signals summed

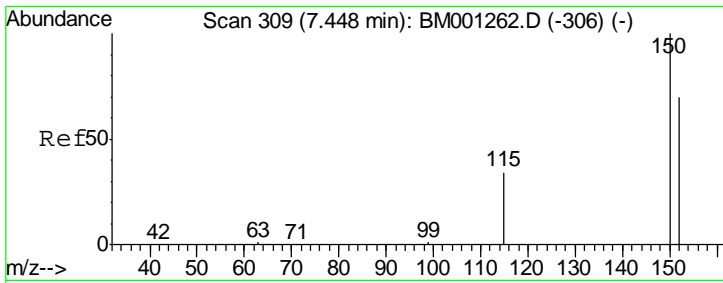
Data Path : Z:\HPCHEM1\BNA\_M\DATA\BM051815\  
 Data File : BM001327.D  
 Acq On : 15 May 2015 14:26  
 Operator : TP/IZ  
 Sample : SSTDCCC001  
 Misc :  
 ALS Vial : 2 Sample Multiplier: 1

**Instrument :**  
 BNA\_M  
**Client Sampled :**  
 SSTDCCC001

**Manual Integrations**  
**APPROVED**  
 apatel  
 5/18/2015 12:16:17 PM

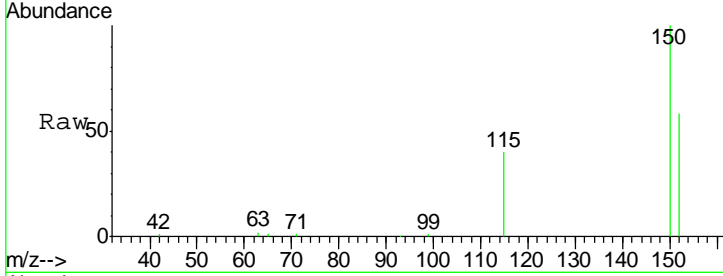
Quant Time: May 16 01:49:33 2015  
 Quant Method : Z:\HPCHEM1\BNA\_M\METHODS\SIMPAH-BM051315.M  
 Quant Title : ASP BNA STANDARDS FOR 5 POINT CALIBRATION  
 QLast Update : Wed May 13 05:24:15 2015  
 Response via : Initial Calibration





#1  
 1,4-Dichlorobenzene-d4  
 Concen: 5.00 ng  
 RT: 7.43 min Scan# 308  
 Delta R.T. -0.02 min  
 Lab File: BM001327.D  
 Acq: 15 May 2015 14:26

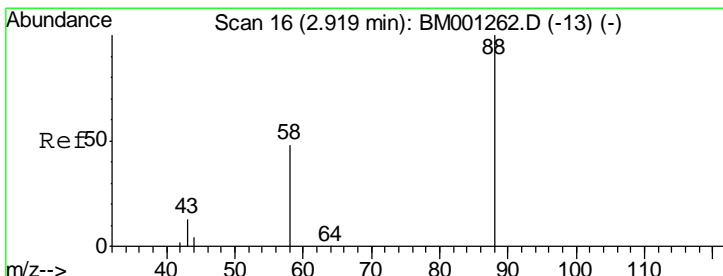
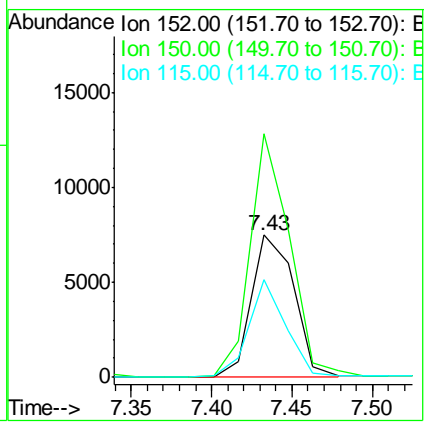
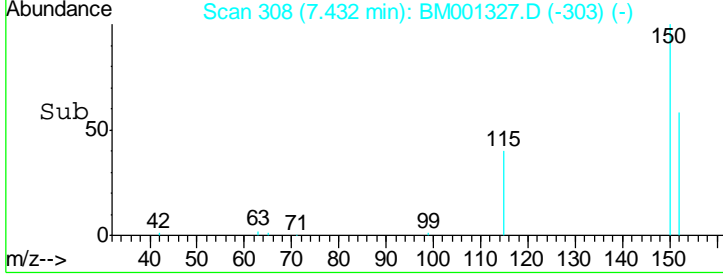
**Instrument :**  
 BNA\_M  
**ClientSampled :**  
 SSTDCCC001



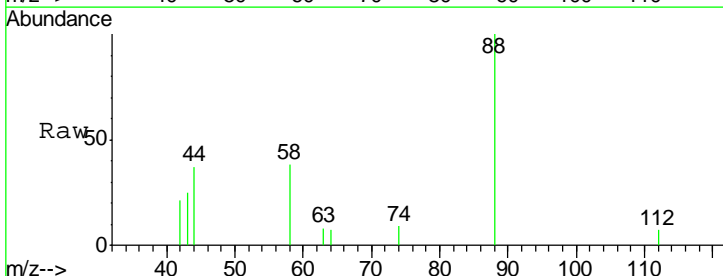
Tgt Ion: 152 Resp: 13724

Ion	Ratio	Lower	Upper
152	100		
150	171.3	114.6	172.0
115	68.5	39.3	58.9#

**Manual Integrations**  
**APPROVED**  
 apatel  
 5/18/2015 12:16:17 PM

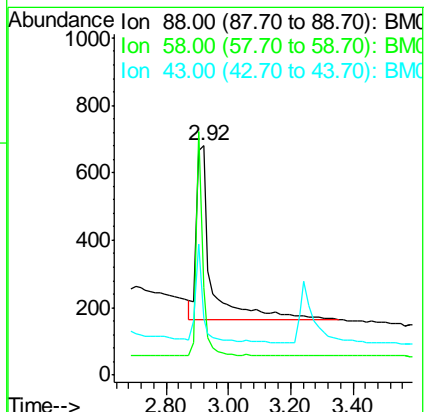
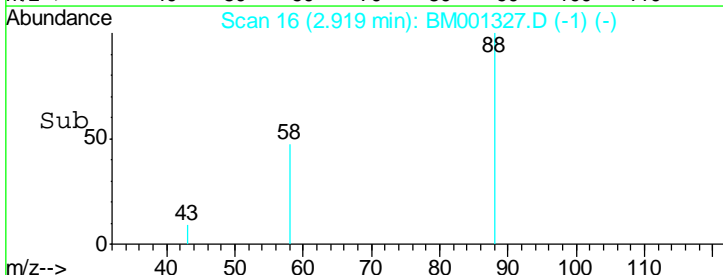


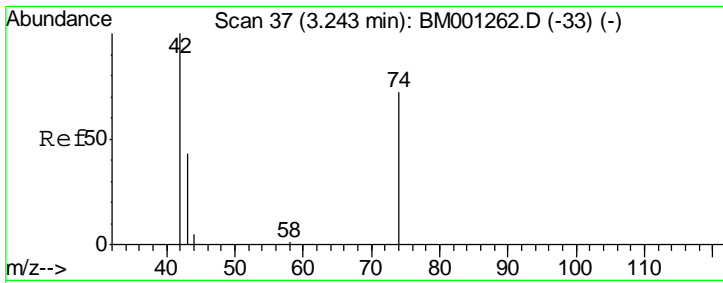
#2  
 1,4-Dioxane  
 Concen: 0.92 ng  
 RT: 2.92 min Scan# 16  
 Delta R.T. 0.00 min  
 Lab File: BM001327.D  
 Acq: 15 May 2015 14:26



Tgt Ion: 88 Resp: 1649

Ion	Ratio	Lower	Upper
88	100		
58	57.4	39.0	58.6
43	27.2	20.2	30.2



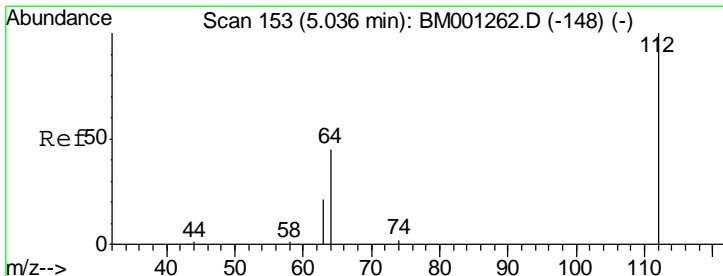
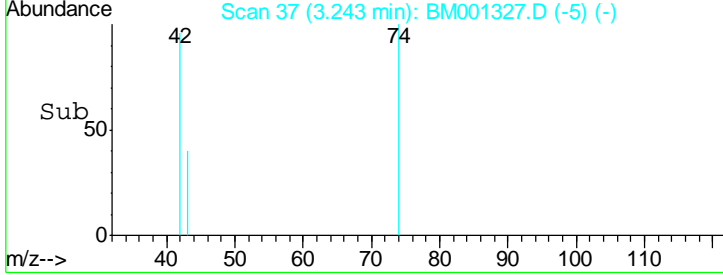
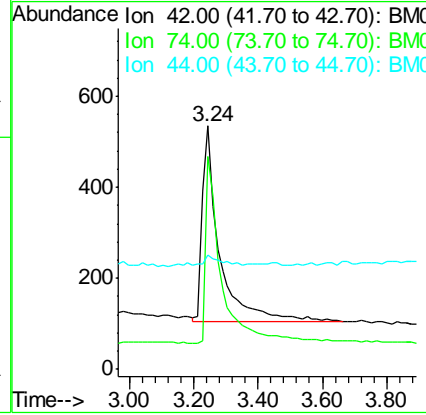
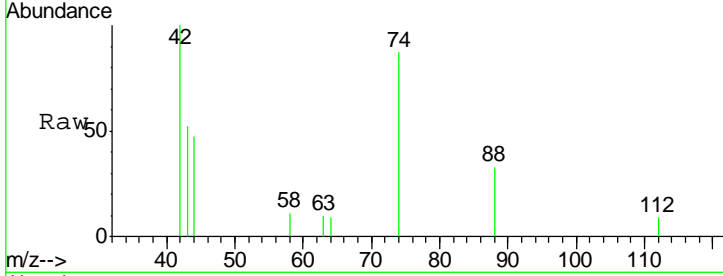


#3  
 n-Nitrosodimethylamine  
 Concen: 1.00 ng  
 RT: 3.24 min Scan# 37  
 Delta R.T. -0.00 min  
 Lab File: BM001327.D  
 Acq: 15 May 2015 14:26

**Instrument :**  
 BNA\_M  
**ClientSampled :**  
 SSTDCCC001

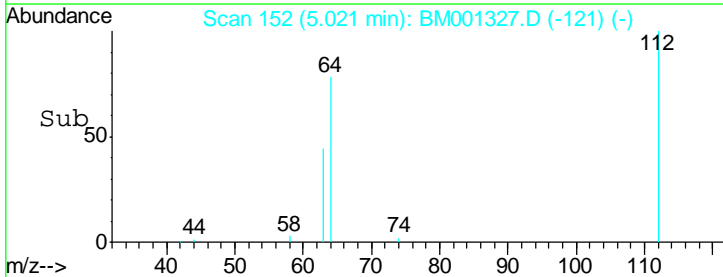
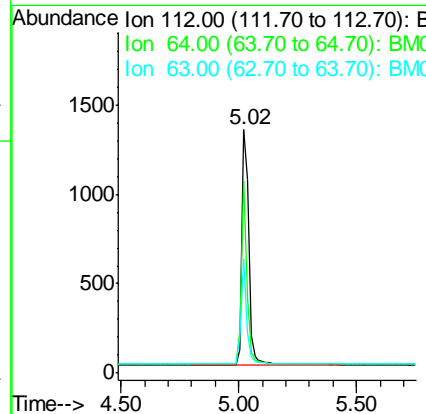
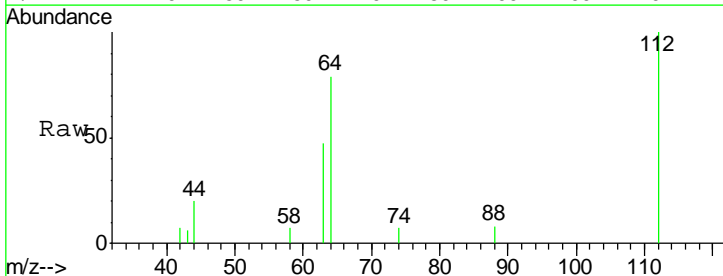
Tgt Ion	Resp	Lower	Upper
42	1560		
42	100		
74	91.3	82.1	123.1
44	4.9	3.0	4.4#

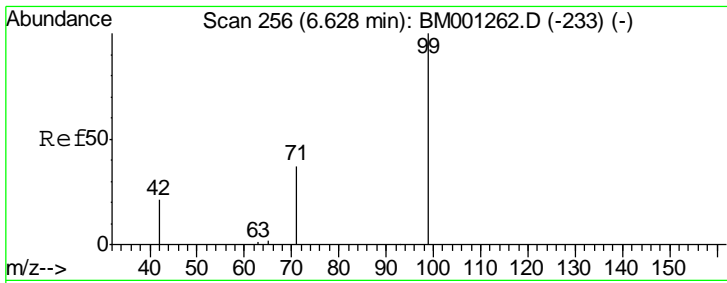
**Manual Integrations**  
**APPROVED**  
 apatel  
 5/18/2015 12:16:17 PM



#4  
 2-Fluorophenol  
 Concen: 0.96 ng  
 RT: 5.02 min Scan# 152  
 Delta R.T. -0.02 min  
 Lab File: BM001327.D  
 Acq: 15 May 2015 14:26

Tgt Ion	Resp	Lower	Upper
112	2573		
112	100		
64	63.5	50.8	76.2
63	36.0	28.2	42.4



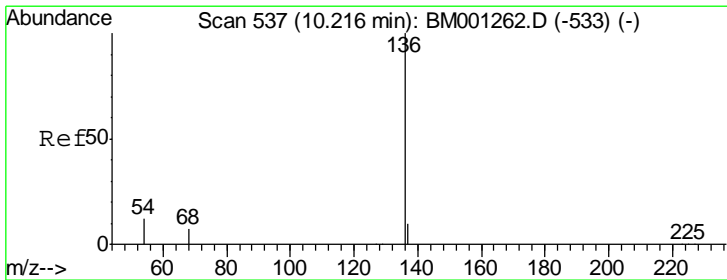
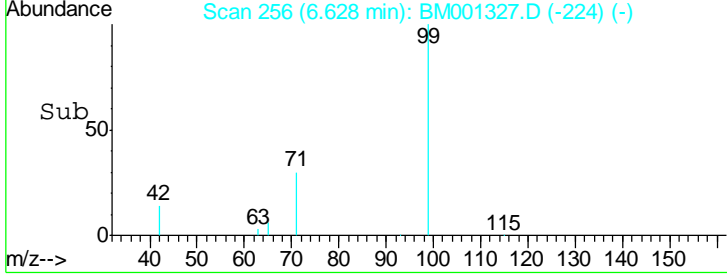
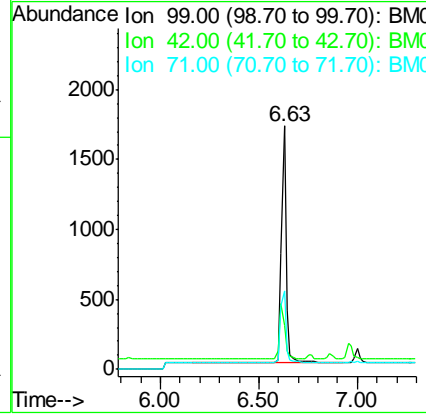
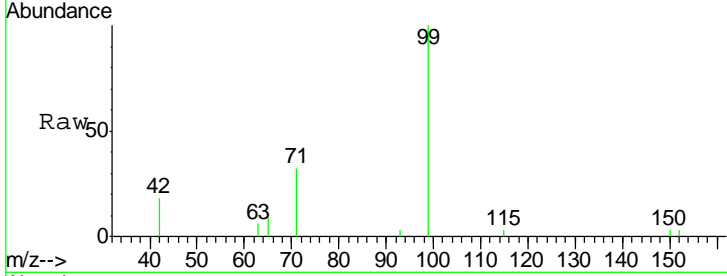


#5  
 Phenol-d6  
 Concen: 0.95 ng  
 RT: 6.63 min Scan# 256  
 Delta R.T. -0.00 min  
 Lab File: BM001327.D  
 Acq: 15 May 2015 14:26

**Instrument :**  
 BNA\_M  
**ClientSampled :**  
 SSTDCCC001

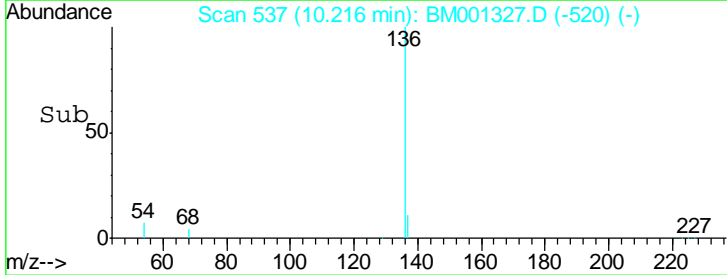
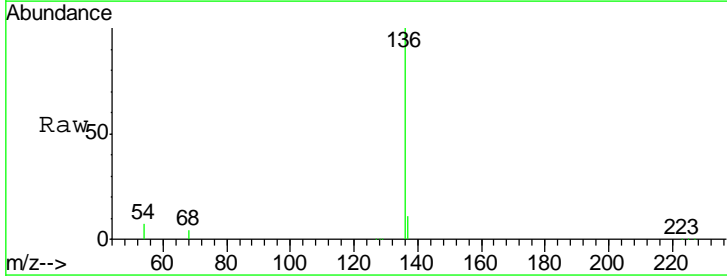
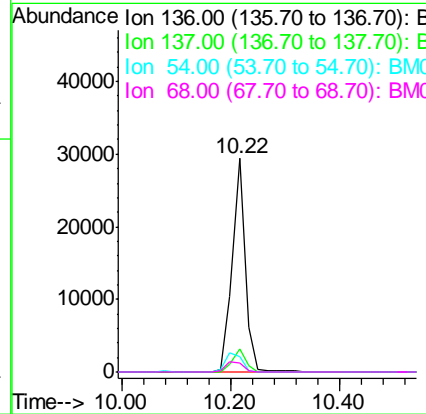
Tgt Ion	Resp	Lower	Upper
99	2860		
42	24.9	19.9	29.9
71	34.9	28.0	42.0

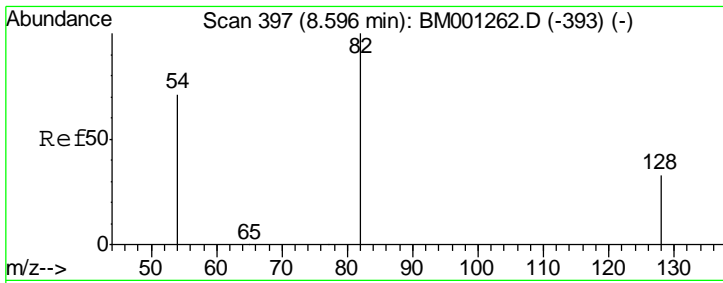
**Manual Integrations**  
**APPROVED**  
 apatel  
 5/18/2015 12:16:17 PM



#6  
 Naphthalene-d8  
 Concen: 5.00 ng  
 RT: 10.22 min Scan# 537  
 Delta R.T. -0.00 min  
 Lab File: BM001327.D  
 Acq: 15 May 2015 14:26

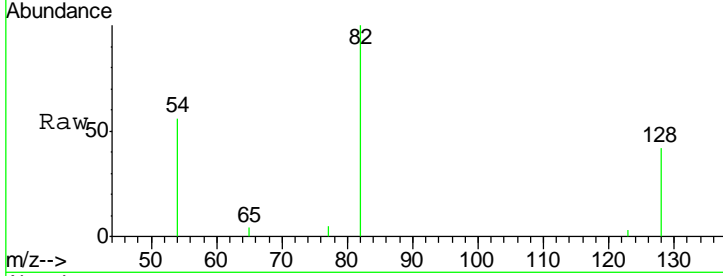
Tgt Ion	Resp	Lower	Upper
136	48391		
137	11.0	8.2	12.4
54	7.1	9.5	14.3#
68	4.5	5.5	8.3#





#7  
 Nitrobenzene-d5  
 Concen: 0.88 ng  
 RT: 8.60 min Scan# 397  
 Delta R.T. 0.00 min  
 Lab File: BM001327.D  
 Acq: 15 May 2015 14:26

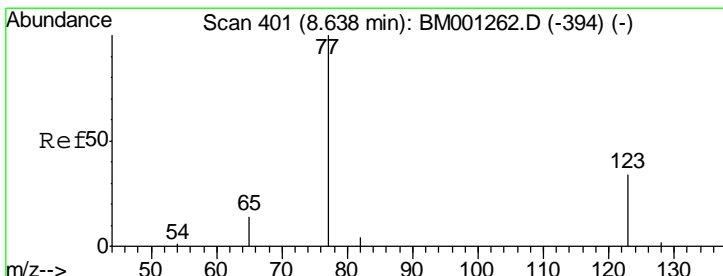
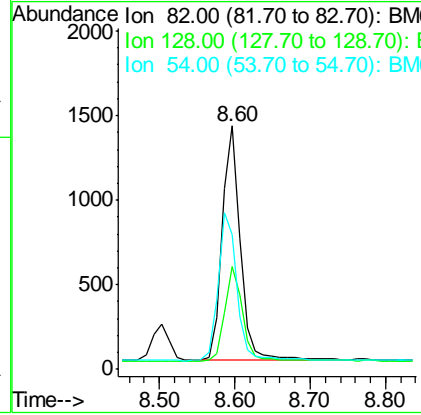
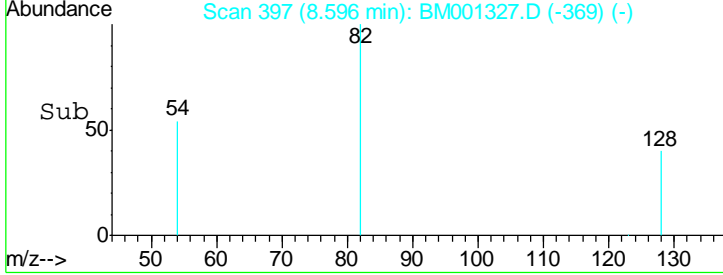
**Instrument :**  
 BNA\_M  
**ClientSampled :**  
 SSTDCCC001



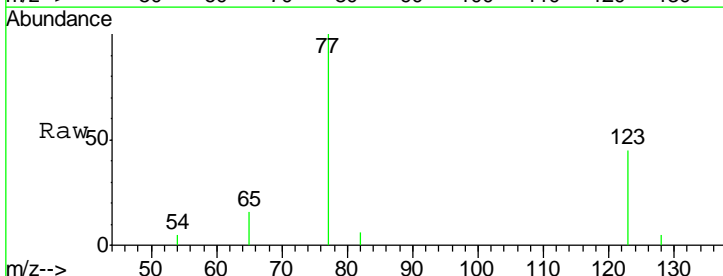
Tgt Ion: 82 Resp: 2371

Ion	Ratio	Lower	Upper
82	100		
128	42.0	28.0	42.0#
54	55.5	57.3	85.9#

**Manual Integrations**  
**APPROVED**  
 apatel  
 5/18/2015 12:16:17 PM

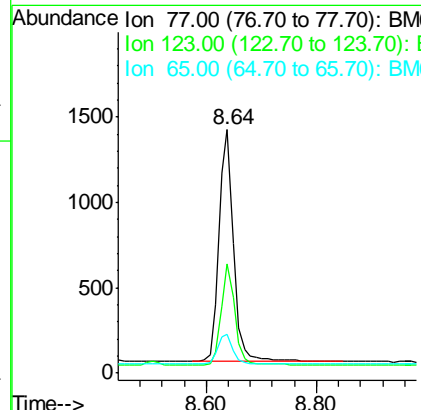
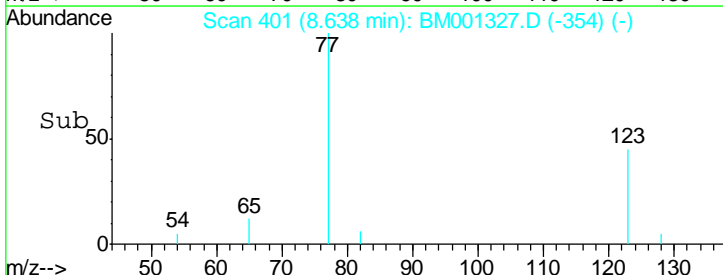


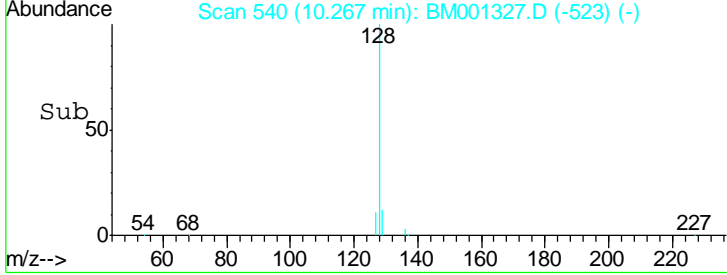
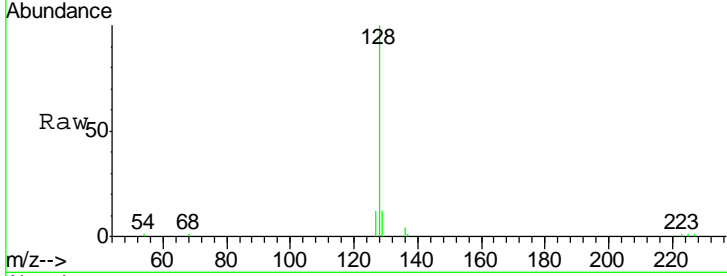
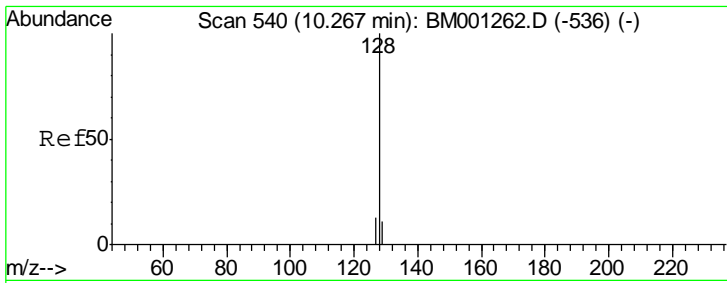
#8  
 Nitrobenzene  
 Concen: 0.87 ng  
 RT: 8.64 min Scan# 401  
 Delta R.T. -0.00 min  
 Lab File: BM001327.D  
 Acq: 15 May 2015 14:26



Tgt Ion: 77 Resp: 2469

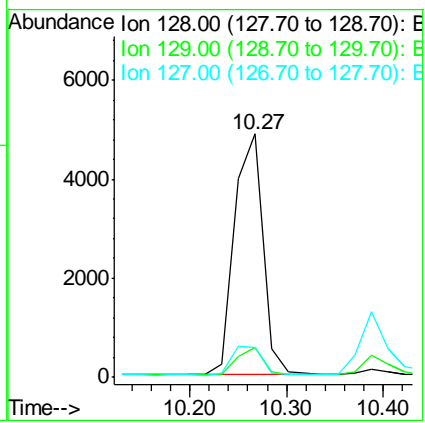
Ion	Ratio	Lower	Upper
77	100		
123	42.1	33.4	50.2
65	13.4	10.6	15.8





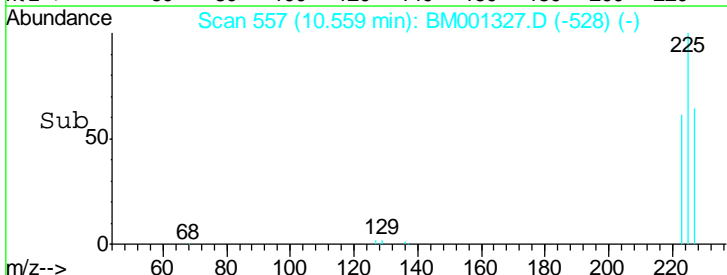
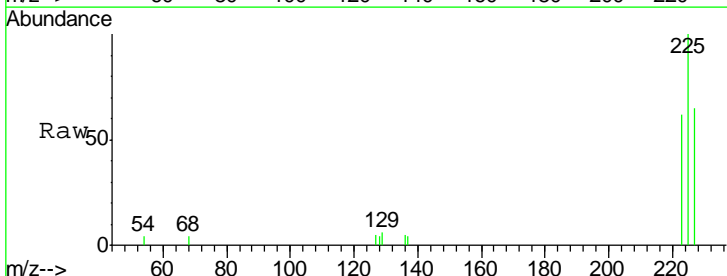
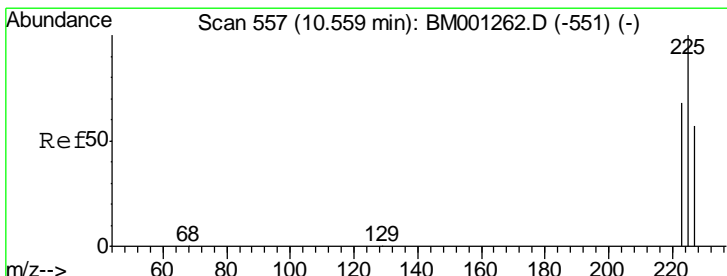
#9  
 Naphthalene  
 Concen: 0.97 ng  
 RT: 10.27 min Scan# 540  
 Delta R.T. -0.00 min  
 Lab File: BM001327.D  
 Acq: 15 May 2015 14:26

Tgt Ion	Resp	Lower	Upper
128	100		
129	12.5	9.1	13.7
127	12.1	10.6	16.0



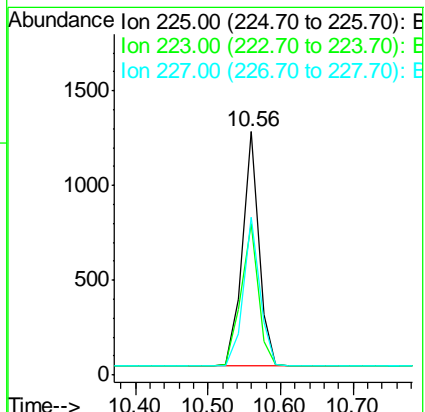
Instrument :  
 BNA\_M  
 ClientSampleId :  
 SSTDCCC001

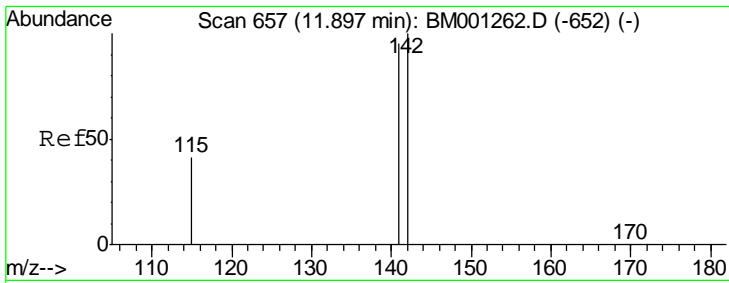
Manual Integrations  
 APPROVED  
 apatel  
 5/18/2015 12:16:17 PM



#10  
 Hexachlorobutadiene  
 Concen: 0.97 ng  
 RT: 10.56 min Scan# 557  
 Delta R.T. -0.00 min  
 Lab File: BM001327.D  
 Acq: 15 May 2015 14:26

Tgt Ion	Resp	Lower	Upper
225	100		
223	63.2	49.6	74.4
227	63.7	51.4	77.2



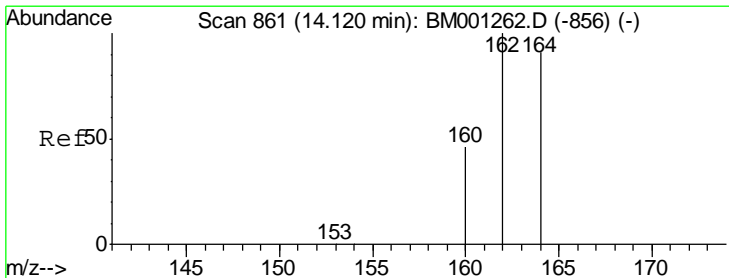
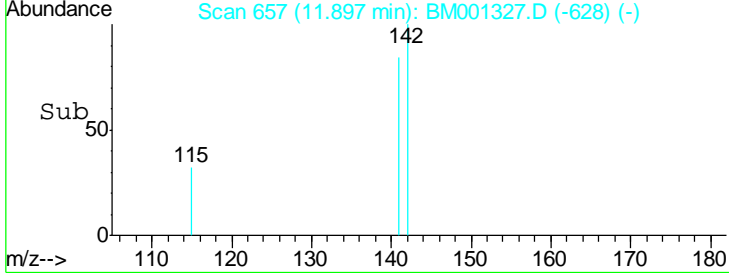
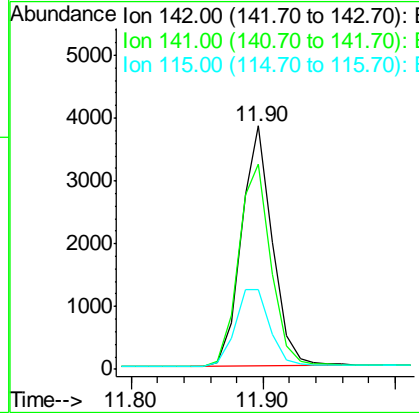
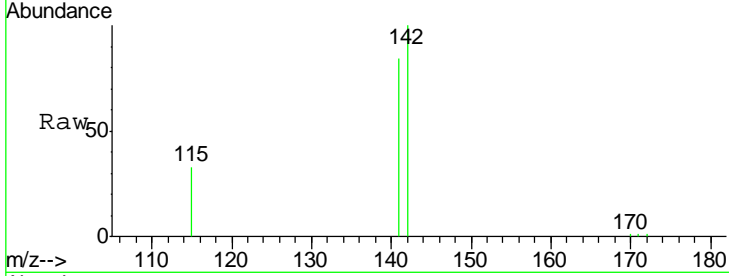


#11  
 2-Methylnaphthalene  
 Concen: 0.93 ng m  
 RT: 11.90 min Scan# 657  
 Delta R.T. -0.00 min  
 Lab File: BM001327.D  
 Acq: 15 May 2015 14:26

**Instrument :**  
 BNA\_M  
**ClientSampled :**  
 SSTDCCC001

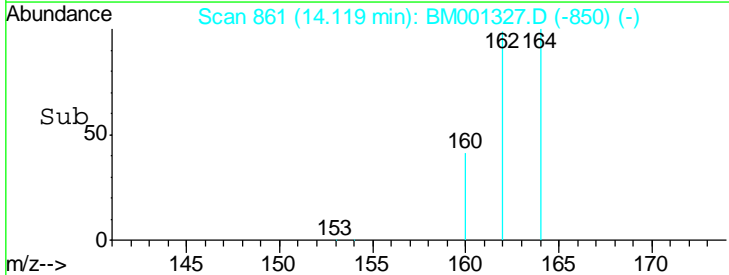
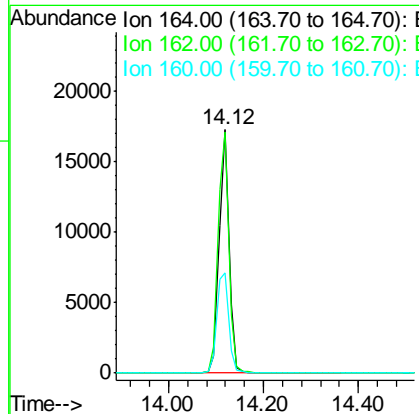
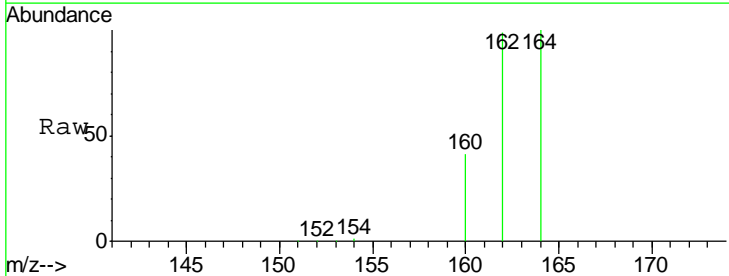
Tgt Ion	Resp	Lower	Upper
142	6212		
141	84.1	76.1	114.1
115	32.9	33.1	49.7#

**Manual Integrations**  
**APPROVED**  
 apatel  
 5/18/2015 12:16:17 PM

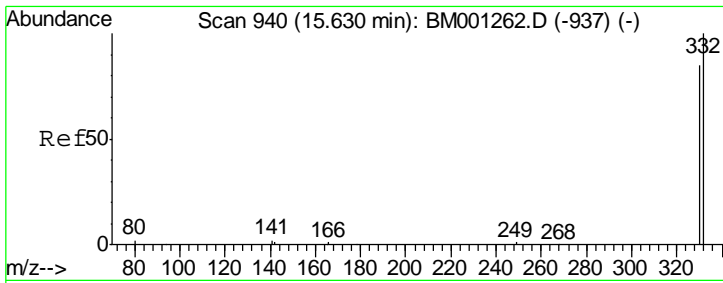


#12  
 Acenaphthene-d10  
 Concen: 5.00 ng  
 RT: 14.12 min Scan# 861  
 Delta R.T. -0.00 min  
 Lab File: BM001327.D  
 Acq: 15 May 2015 14:26

Tgt Ion	Resp	Lower	Upper
164	24795		
162	98.8	87.9	131.9
160	41.4	40.9	61.3

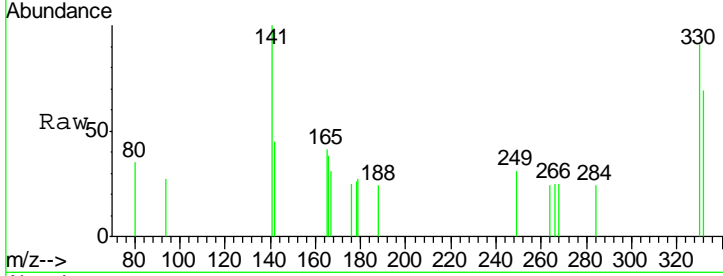






#13  
 2,4,6-Tribromophenol  
 Concen: 0.68 ng  
 RT: 15.60 min Scan# 939  
 Delta R.T. -0.03 min  
 Lab File: BM001327.D  
 Acq: 15 May 2015 14:26

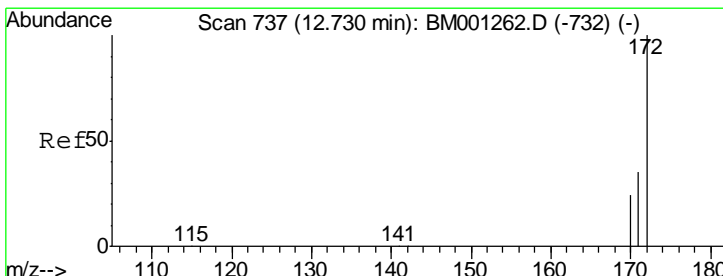
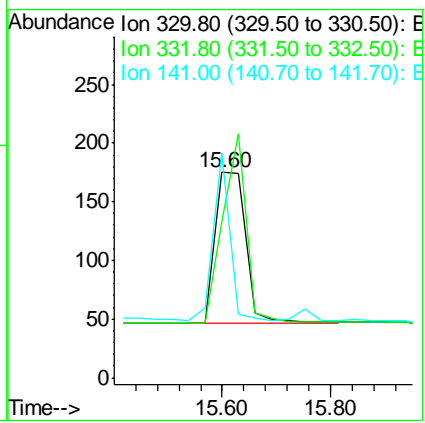
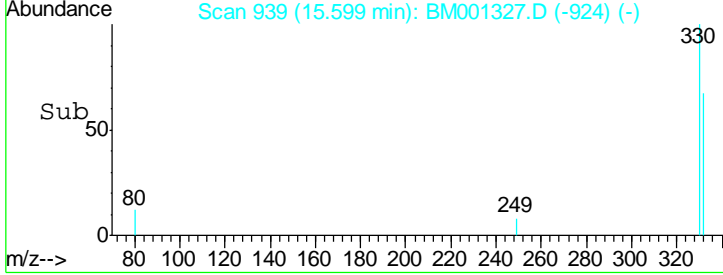
**Instrument :**  
 BNA\_M  
**ClientSampleId :**  
 SSTDCCC001



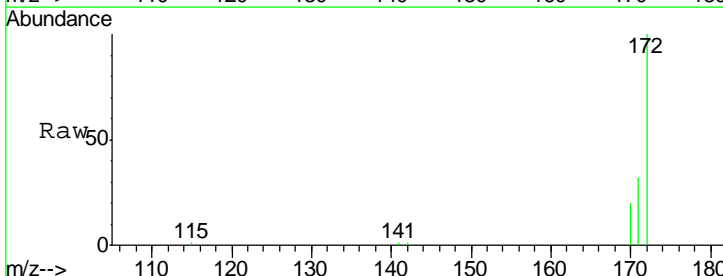
Tgt Ion: 330 Resp: 509

Ion	Ratio	Lower	Upper
330	100		
332	0.0	89.0	133.4#
141	58.2	0.0	0.0#

**Manual Integrations**  
**APPROVED**  
 apatel  
 5/18/2015 12:16:17 PM

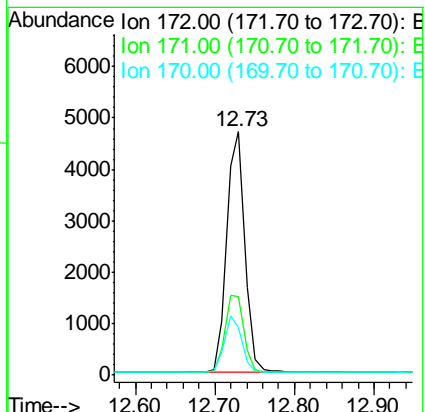
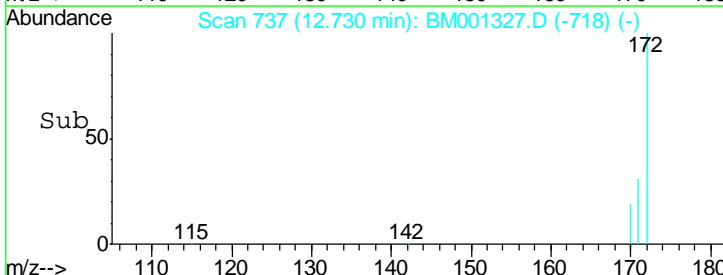


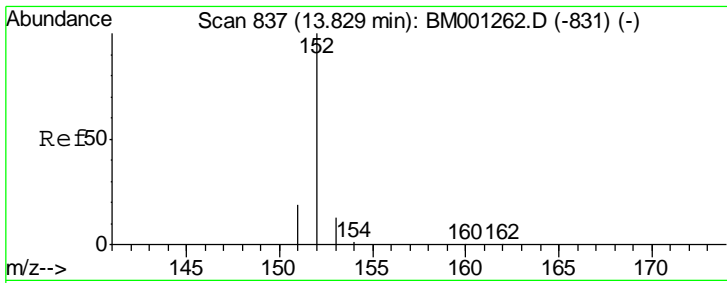
#14  
 2-Fluorobiphenyl  
 Concen: 0.97 ng  
 RT: 12.73 min Scan# 737  
 Delta R.T. -0.00 min  
 Lab File: BM001327.D  
 Acq: 15 May 2015 14:26



Tgt Ion: 172 Resp: 7443

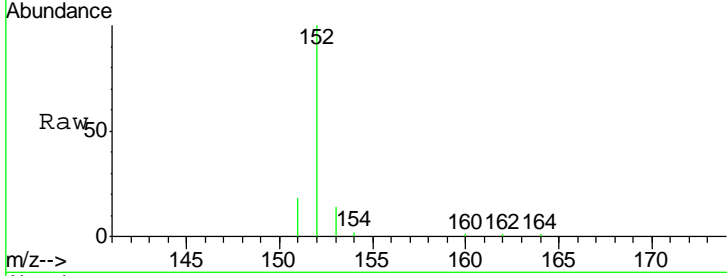
Ion	Ratio	Lower	Upper
172	100		
171	32.1	28.7	43.1
170	19.6	19.5	29.3





#15  
 Acenaphthylene  
 Concen: 0.95 ng  
 RT: 13.83 min Scan# 837  
 Delta R.T. -0.00 min  
 Lab File: BM001327.D  
 Acq: 15 May 2015 14:26

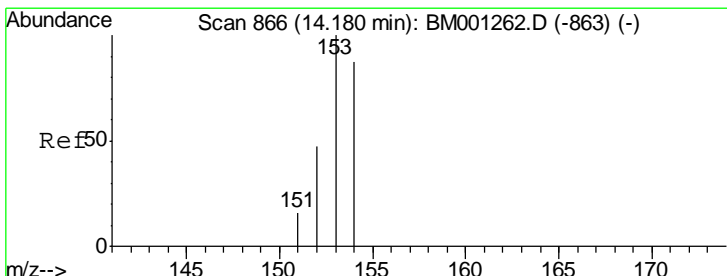
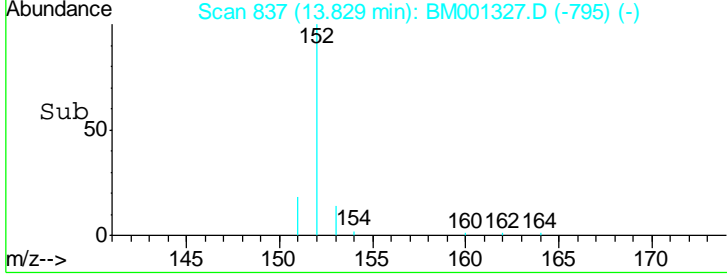
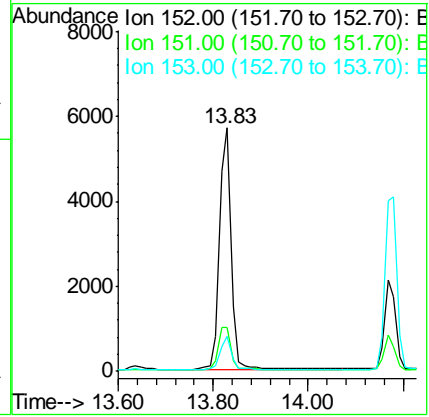
Instrument :  
 BNA\_M  
 ClientSampled :  
 SSTDCCC001



Tgt Ion:152 Resp: 9692

Ion	Ratio	Lower	Upper
152	100		
151	18.5	15.0	22.4
153	12.8	10.1	15.1

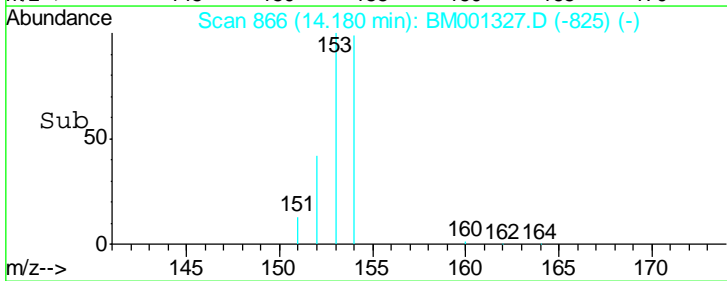
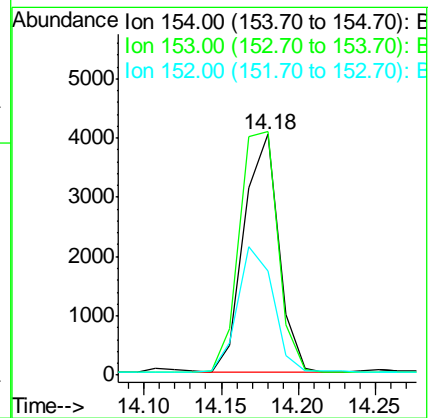
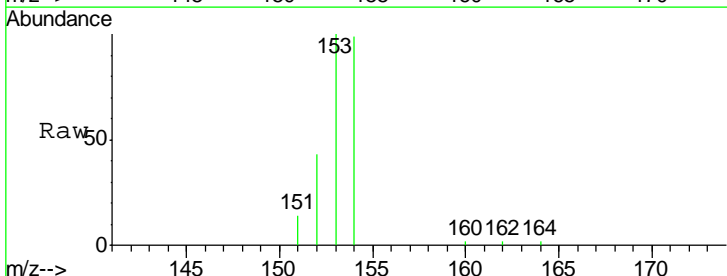
Manual Integrations  
 APPROVED  
 apatel  
 5/18/2015 12:16:17 PM

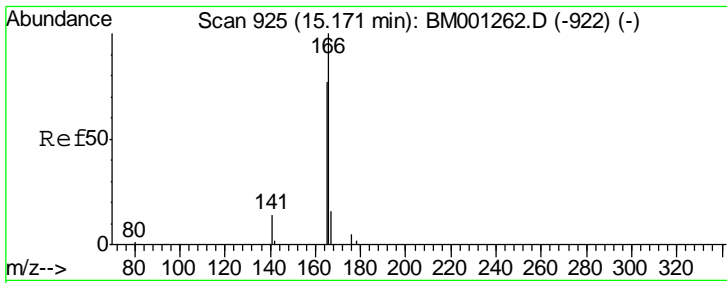


#16  
 Acenaphthene  
 Concen: 0.95 ng  
 RT: 14.18 min Scan# 866  
 Delta R.T. -0.00 min  
 Lab File: BM001327.D  
 Acq: 15 May 2015 14:26

Tgt Ion:154 Resp: 6222

Ion	Ratio	Lower	Upper
154	100		
153	113.3	91.4	137.2
152	54.6	44.3	66.5



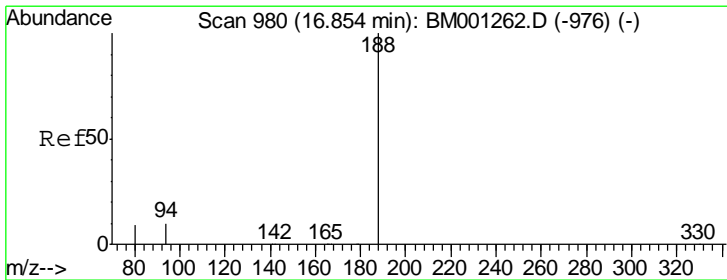
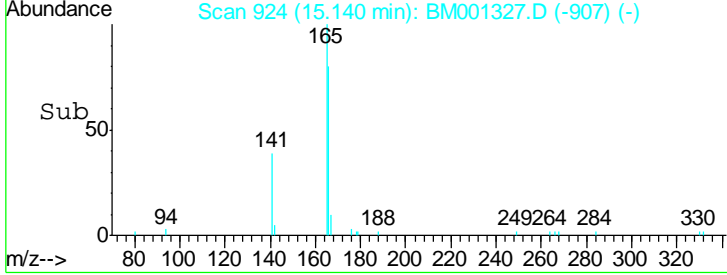
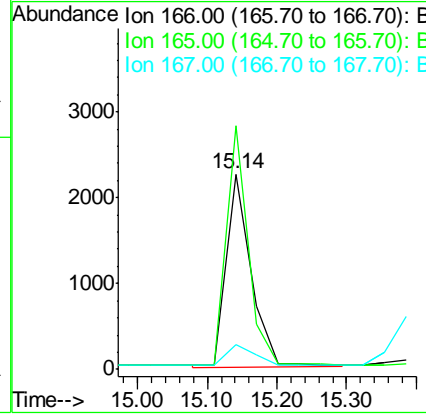
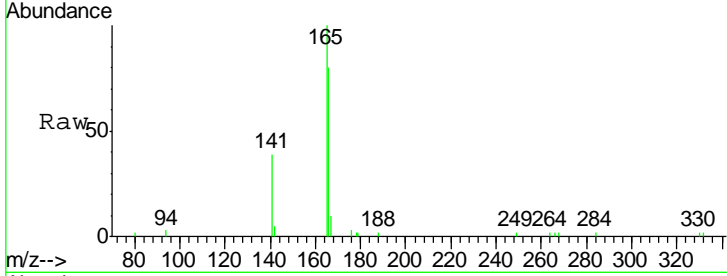


#17  
 Fluorene  
 Concen: 0.96 ng  
 RT: 15.14 min Scan# 924  
 Delta R.T. -0.03 min  
 Lab File: BM001327.D  
 Acq: 15 May 2015 14:26

Instrument :  
 BNA\_M  
 ClientSampled :  
 SSTDCCC001

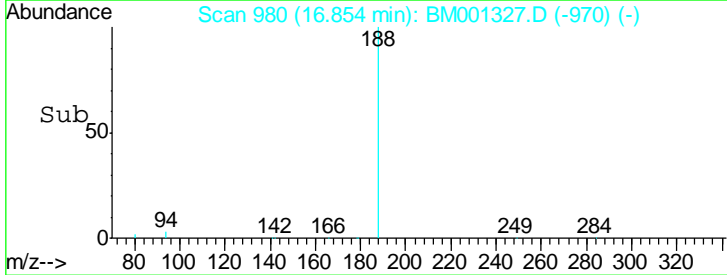
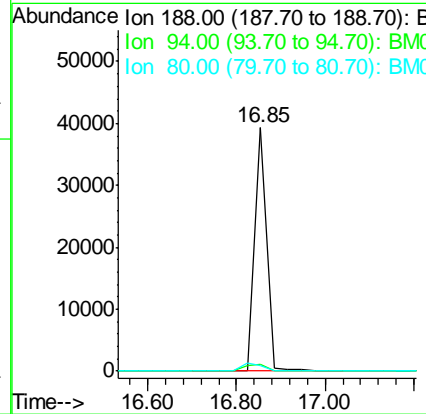
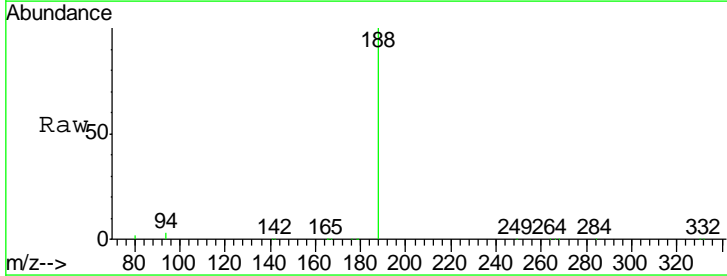
Tgt Ion	Resp	Lower	Upper
166	100		
165	106.8	70.6	106.0#
167	11.7	11.3	16.9

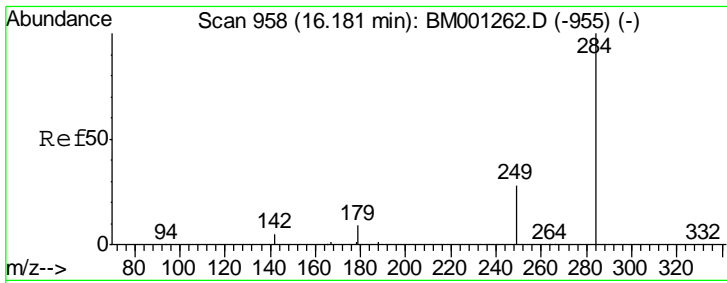
Manual Integrations  
 APPROVED  
 apatel  
 5/18/2015 12:16:17 PM



#18  
 Phenanthrene-d10  
 Concen: 5.00 ng  
 RT: 16.85 min Scan# 980  
 Delta R.T. -0.00 min  
 Lab File: BM001327.D  
 Acq: 15 May 2015 14:26

Tgt Ion	Resp	Lower	Upper
188	100		
94	2.7	7.8	11.8#
80	2.3	7.5	11.3#



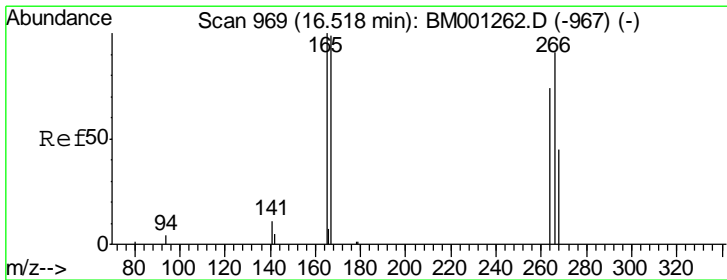
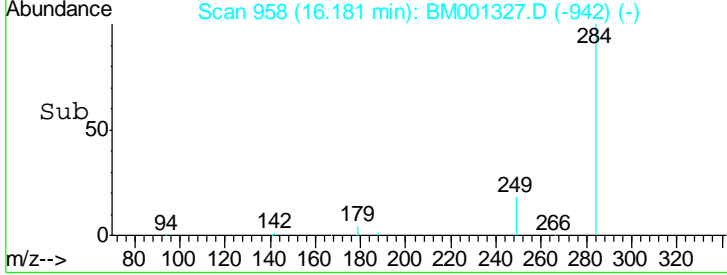
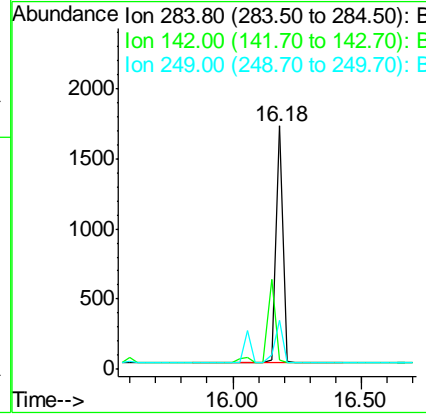
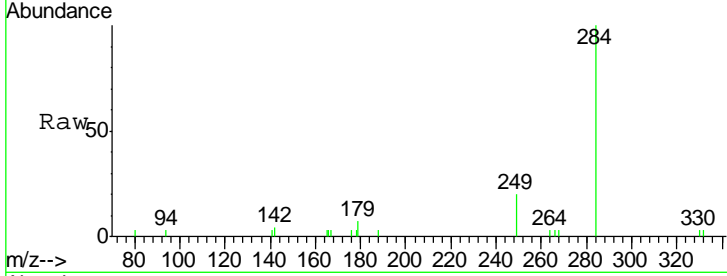


#19  
 Hexachlorobenzene  
 Concen: 0.66 ng  
 RT: 16.18 min Scan# 958  
 Delta R.T. -0.00 min  
 Lab File: BM001327.D  
 Acq: 15 May 2015 14:26

Instrument :  
 BNA\_M  
 ClientSampleId :  
 SSTDCCC001

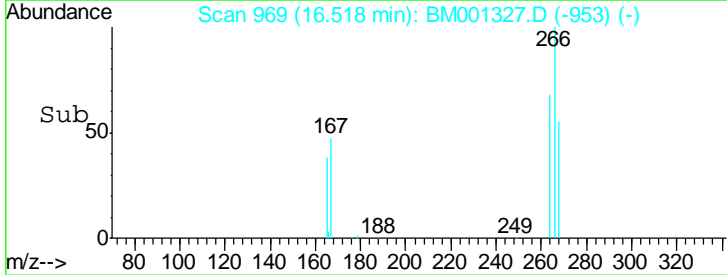
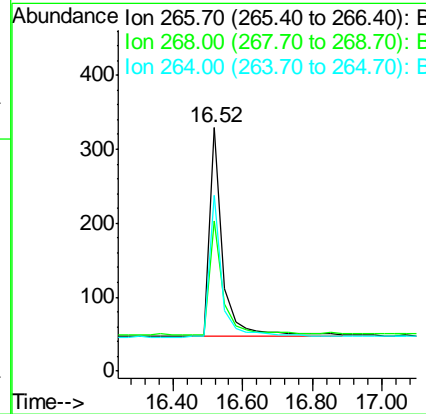
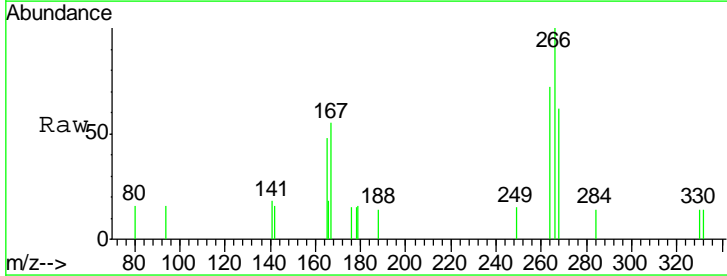
Tgt Ion	Resp	Lower	Upper
284	3162		
142	0.0	0.0	0.0
249	20.4	22.7	34.1#

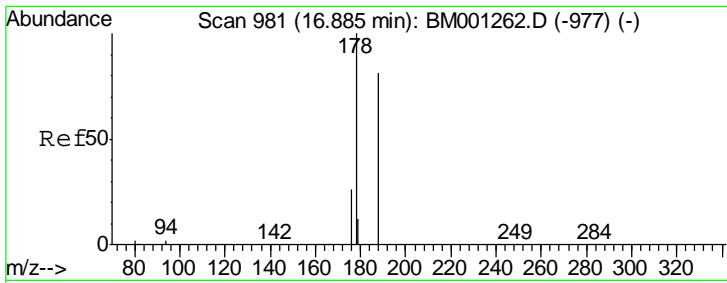
Manual Integrations  
**APPROVED**  
 apatel  
 5/18/2015 12:16:17 PM



#20  
 Pentachlorophenol  
 Concen: 0.91 ng  
 RT: 16.52 min Scan# 969  
 Delta R.T. 0.00 min  
 Lab File: BM001327.D  
 Acq: 15 May 2015 14:26

Tgt Ion	Resp	Lower	Upper
266	733		
268	61.7	49.4	74.0
264	72.3	67.8	101.6



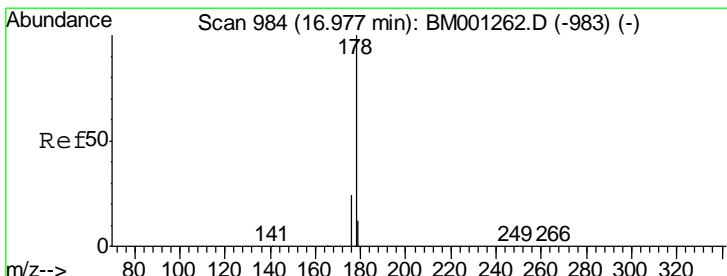
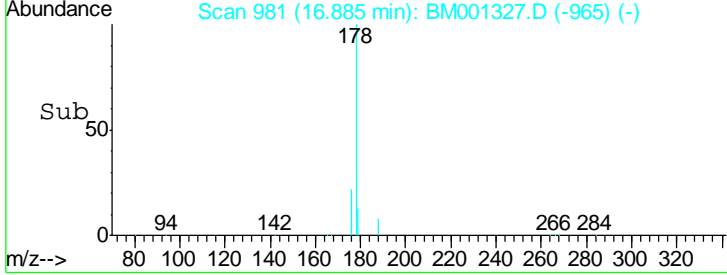
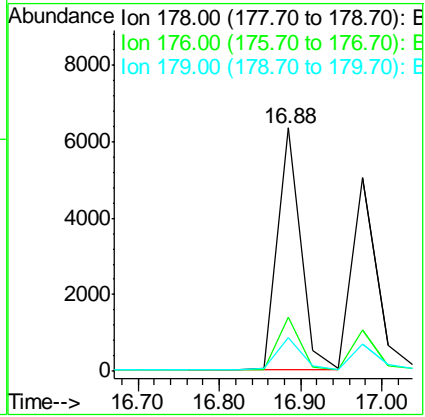
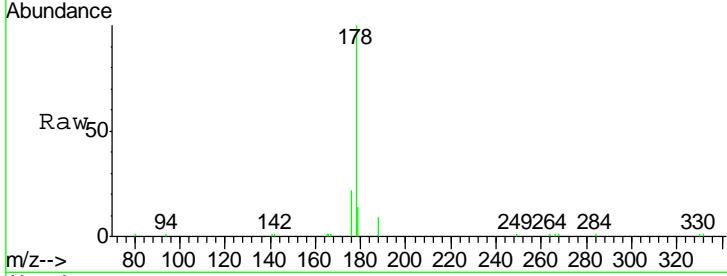


#21  
 Phenanthrene  
 Concen: 1.12 ng  
 RT: 16.88 min Scan# 981  
 Delta R.T. -0.00 min  
 Lab File: BM001327.D  
 Acq: 15 May 2015 14:26

Instrument :  
 BNA\_M  
 ClientSampled :  
 SSTDCCC001

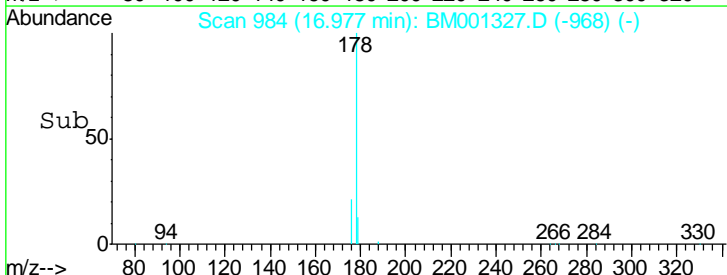
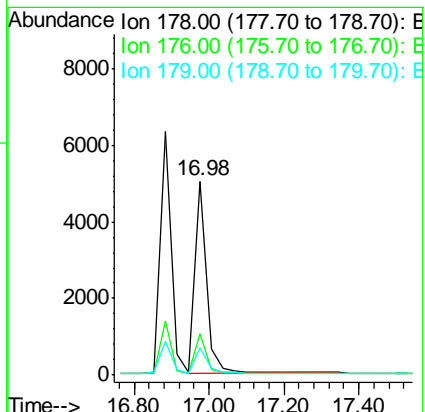
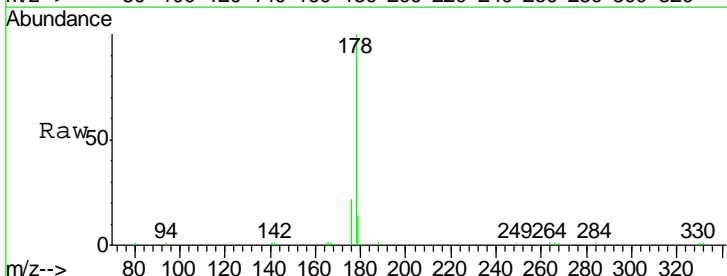
Tgt Ion	Resp	Lower	Upper
178	100		
176	20.9	15.9	23.9
179	13.9	0.0	0.0#

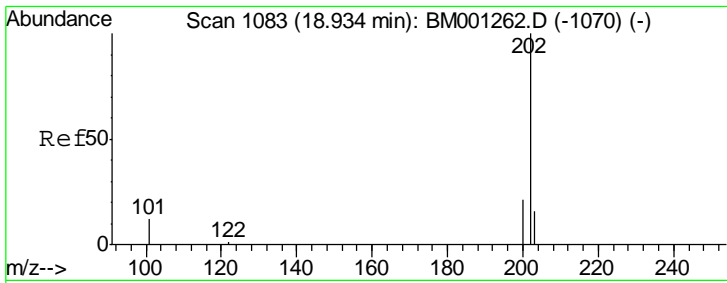
Manual Integrations  
**APPROVED**  
 apatel  
 5/18/2015 12:16:17 PM



#22  
 Anthracene  
 Concen: 0.99 ng  
 RT: 16.98 min Scan# 984  
 Delta R.T. -0.00 min  
 Lab File: BM001327.D  
 Acq: 15 May 2015 14:26

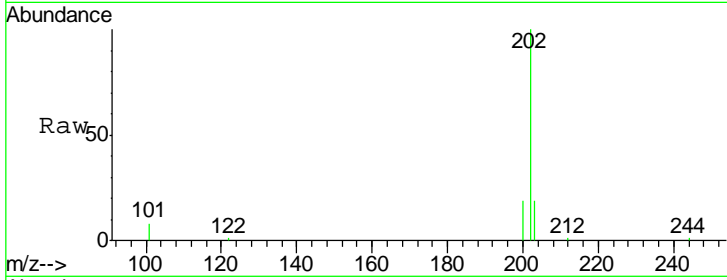
Tgt Ion	Resp	Lower	Upper
178	100		
176	20.0	15.3	22.9
179	14.0	0.0	0.0#





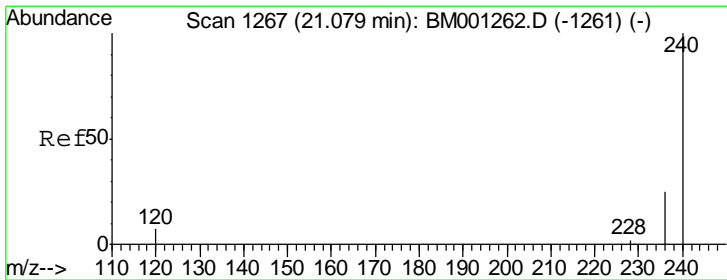
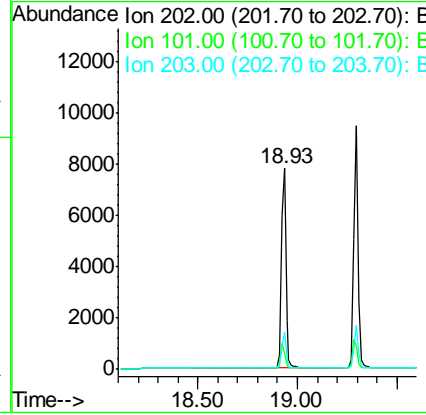
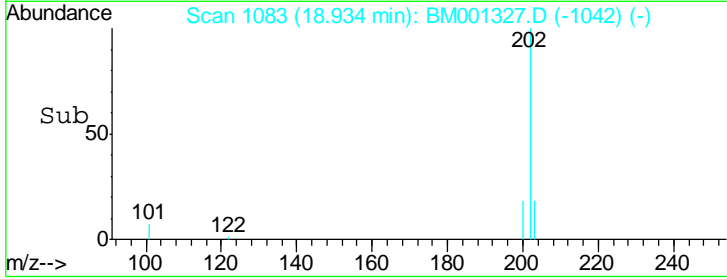
#23  
 Fluoranthene  
 Concen: 0.70 ng  
 RT: 18.93 min Scan# 1083  
 Delta R.T. -0.00 min  
 Lab File: BM001327.D  
 Acq: 15 May 2015 14:26

Instrument :  
 BNA\_M  
 ClientSampled :  
 SSTDCCC001

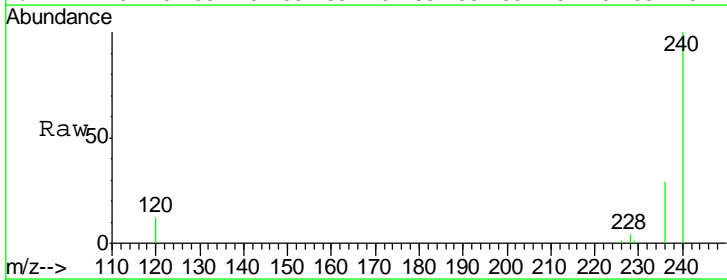


Tgt Ion	Resp	Lower	Upper
202	12365		
101	11.3	9.1	13.7
203	17.2	13.8	20.6

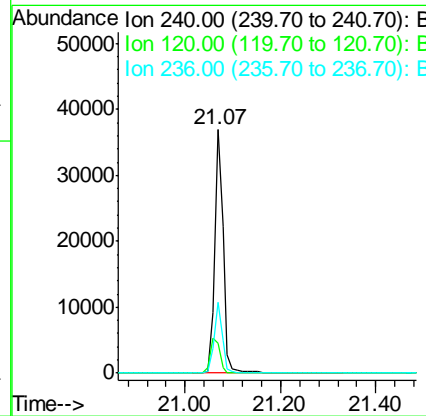
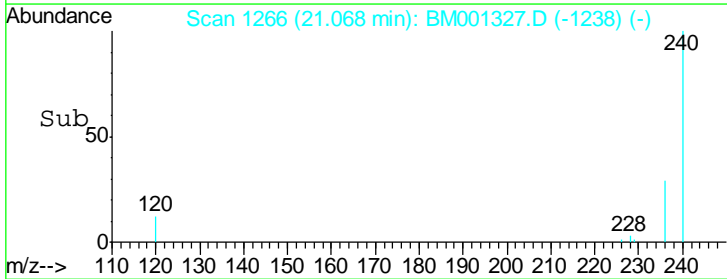
Manual Integrations  
 APPROVED  
 apatel  
 5/18/2015 12:16:17 PM

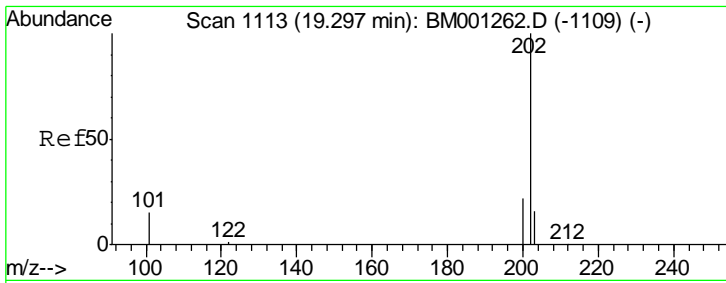


#24  
 Chrysene-d12  
 Concen: 5.00 ng  
 RT: 21.07 min Scan# 1266  
 Delta R.T. -0.01 min  
 Lab File: BM001327.D  
 Acq: 15 May 2015 14:26



Tgt Ion	Resp	Lower	Upper
240	45997		
120	12.2	5.5	8.3#
236	29.0	20.4	30.6



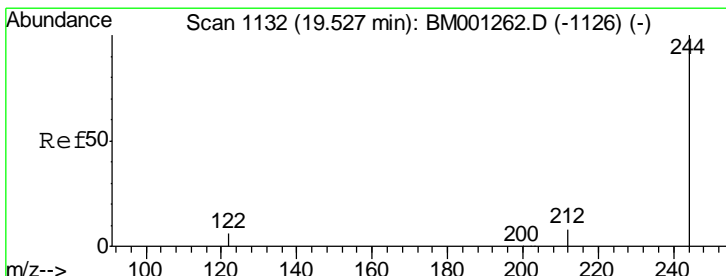
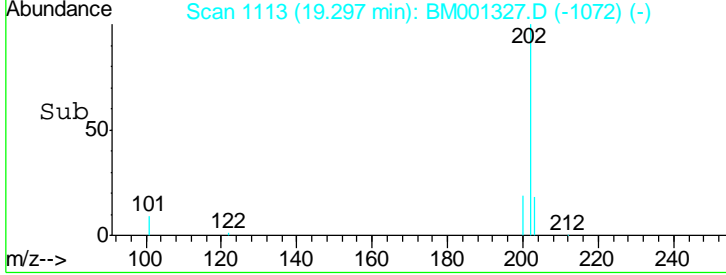
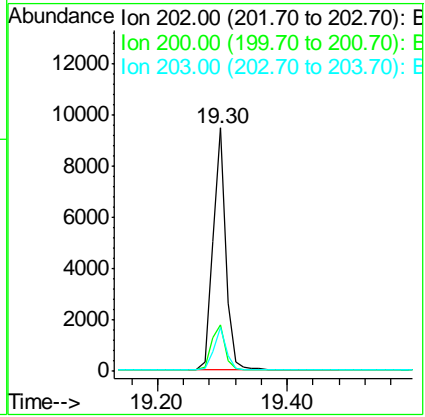
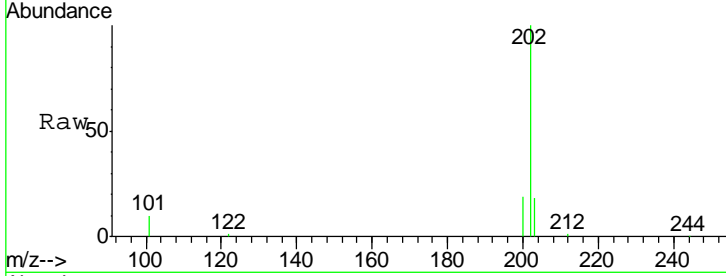


#25  
 Pyrene  
 Concen: 0.92 ng  
 RT: 19.30 min Scan# 1113  
 Delta R.T. -0.00 min  
 Lab File: BM001327.D  
 Acq: 15 May 2015 14:26

**Instrument :**  
 BNA\_M  
**Client Sampled :**  
 SSTDCCC001

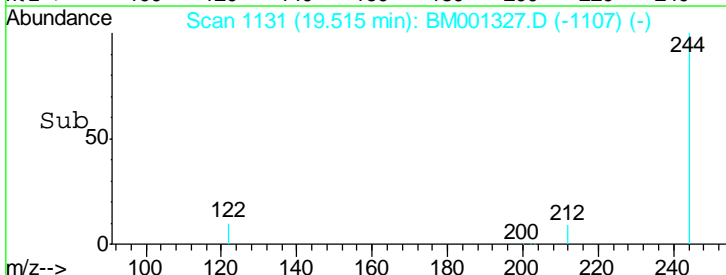
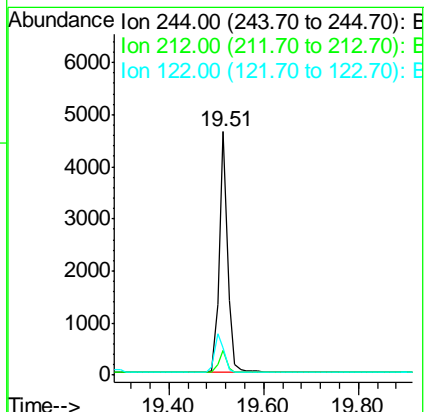
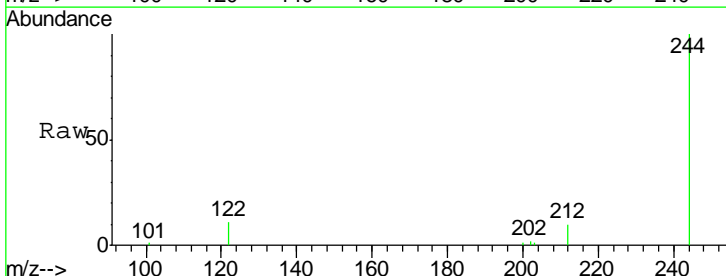
Tgt Ion	Resp	Lower	Upper
202	13125		
200	20.2	16.4	24.6
203	17.3	13.9	20.9

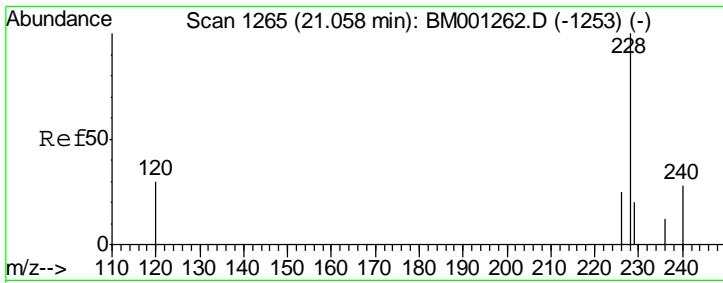
**Manual Integrations**  
**APPROVED**  
 apatel  
 5/18/2015 12:16:17 PM



#26  
 Terphenyl-d14  
 Concen: 0.92 ng  
 RT: 19.51 min Scan# 1131  
 Delta R.T. -0.01 min  
 Lab File: BM001327.D  
 Acq: 15 May 2015 14:26

Tgt Ion	Resp	Lower	Upper
244	5672		
212	10.2	7.2	10.8
122	11.1	5.6	8.4#



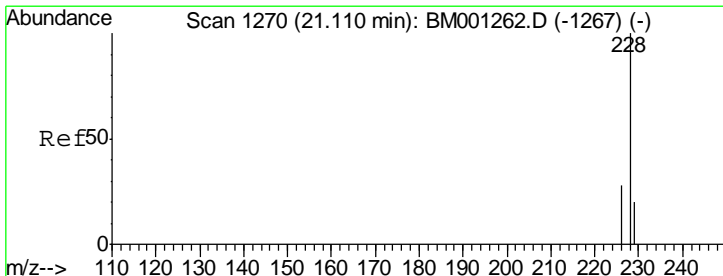
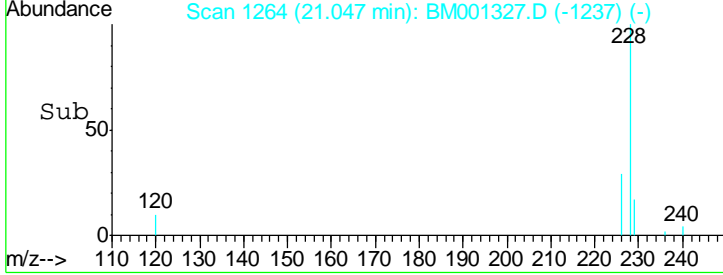
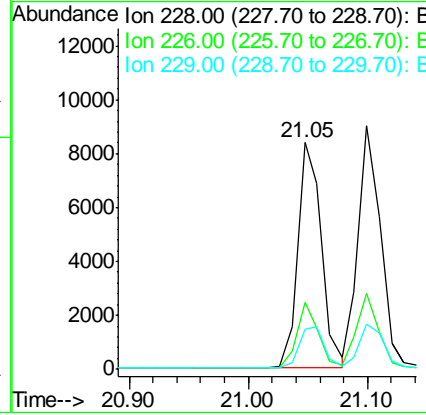
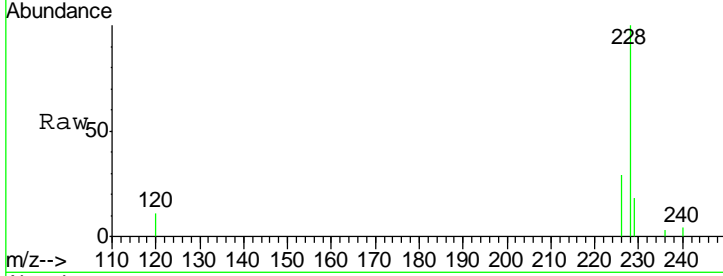


#27  
 Benzo(a)anthracene  
 Concen: 0.93 ng  
 RT: 21.05 min Scan# 1264  
 Delta R.T. -0.01 min  
 Lab File: BM001327.D  
 Acq: 15 May 2015 14:26

Instrument :  
 BNA\_M  
 ClientSampleId :  
 SSTDCCC001

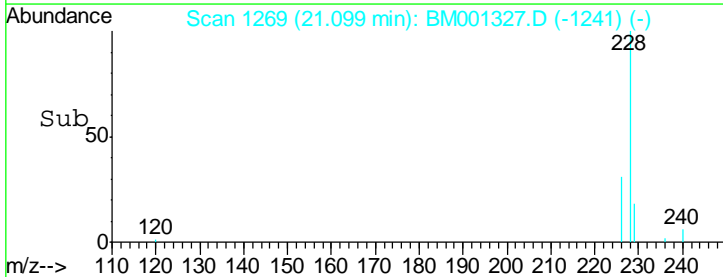
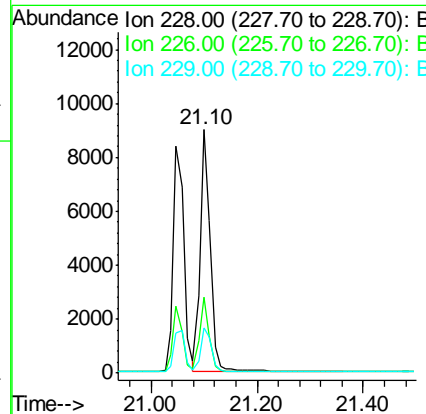
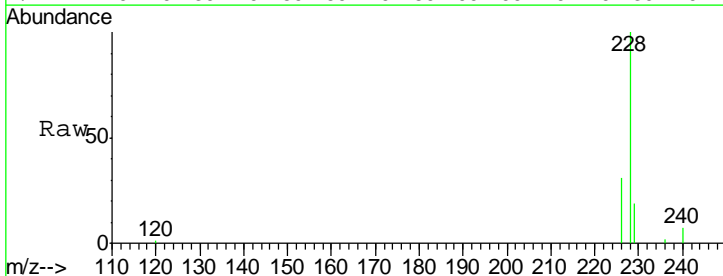
Tgt Ion	Resp	Lower	Upper
228	11566		
226	29.5	20.5	30.7
229	17.6	16.2	24.4

Manual Integrations  
 APPROVED  
 apatel  
 5/18/2015 12:16:17 PM

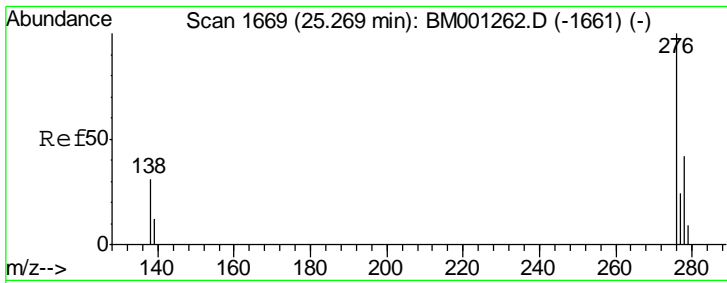


#28  
 Chrysene  
 Concen: 0.95 ng  
 RT: 21.10 min Scan# 1269  
 Delta R.T. -0.01 min  
 Lab File: BM001327.D  
 Acq: 15 May 2015 14:26

Tgt Ion	Resp	Lower	Upper
228	11980		
226	31.3	22.2	33.2
229	18.7	16.5	24.7

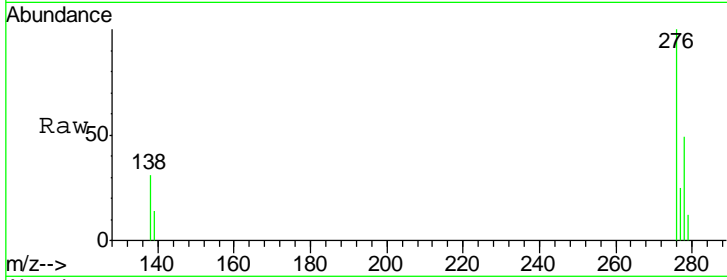






#29  
 Indeno(1,2,3-cd)pyrene  
 Concen: 1.03 ng  
 RT: 25.26 min Scan# 1668  
 Delta R.T. -0.01 min  
 Lab File: BM001327.D  
 Acq: 15 May 2015 14:26

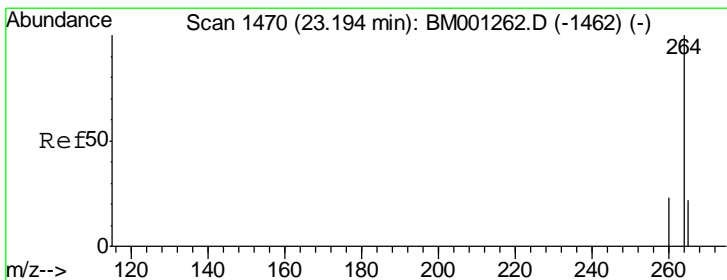
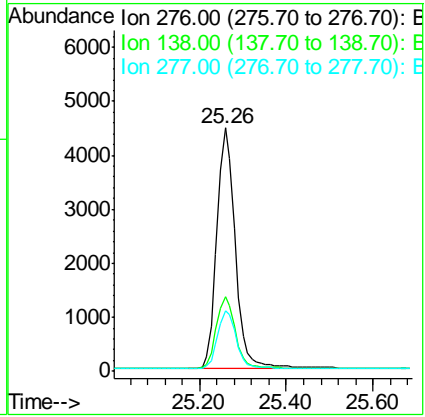
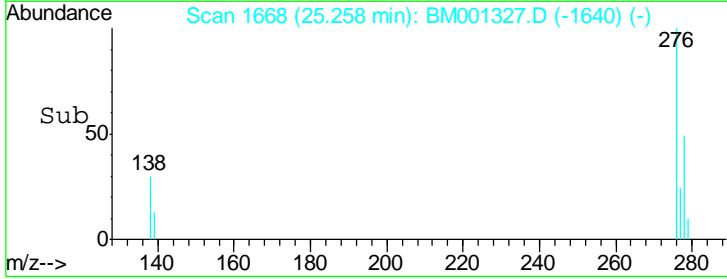
**Instrument :**  
 BNA\_M  
**ClientSampled :**  
 SSTDCCC001



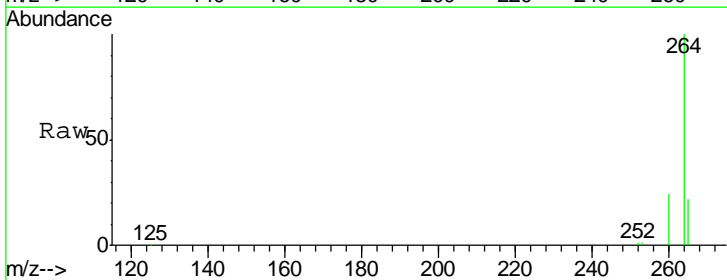
Tgt Ion: 276 Resp: 13193

Ion	Ratio	Lower	Upper
276	100		
138	31.1	24.9	37.3
277	24.7	19.5	29.3

**Manual Integrations**  
**APPROVED**  
 apatel  
 5/18/2015 12:16:17 PM

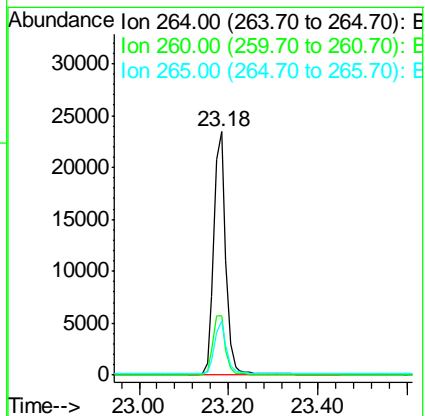
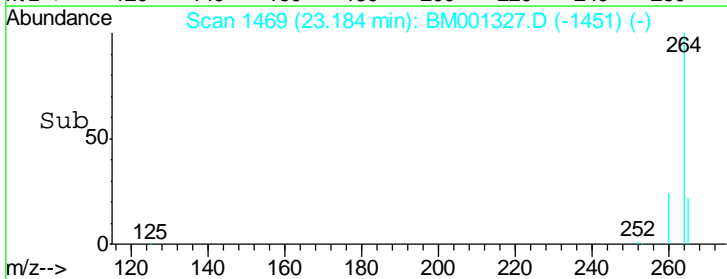


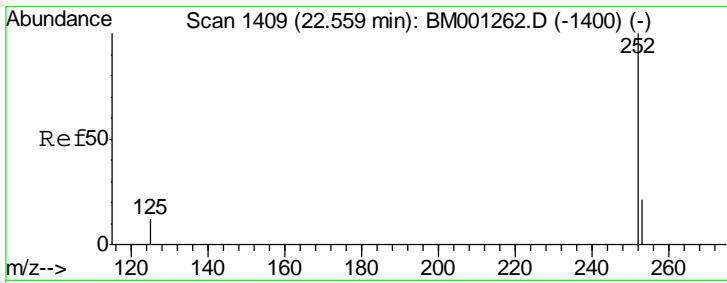
#30  
 Perylene-d12  
 Concen: 5.00 ng  
 RT: 23.18 min Scan# 1469  
 Delta R.T. -0.01 min  
 Lab File: BM001327.D  
 Acq: 15 May 2015 14:26



Tgt Ion: 264 Resp: 43375

Ion	Ratio	Lower	Upper
264	100		
260	24.1	18.9	28.3
265	22.5	18.1	27.1



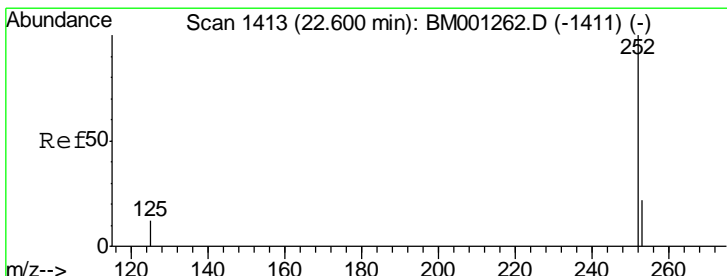
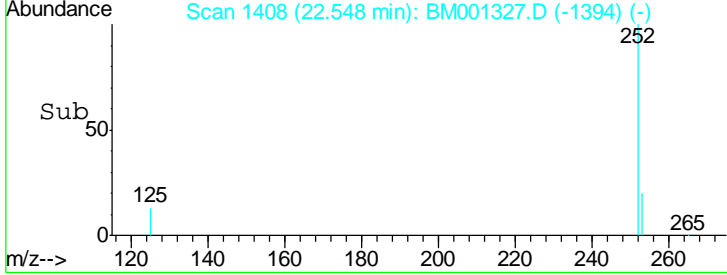
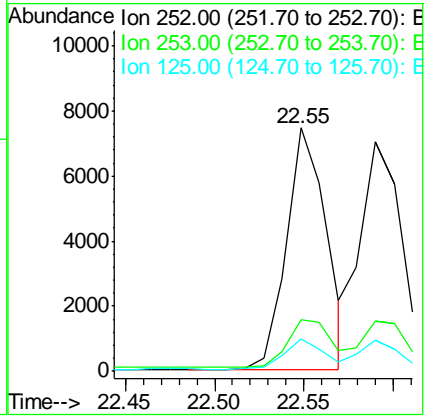
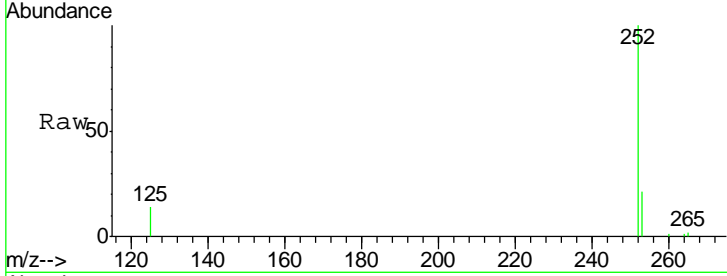


#31  
 Benzo(b)fluoranthene  
 Concen: 0.90 ng  
 RT: 22.55 min Scan# 1408  
 Delta R.T. -0.01 min  
 Lab File: BM001327.D  
 Acq: 15 May 2015 14:26

Instrument :  
 BNA\_M  
 ClientSampleId :  
 SSTDCCC001

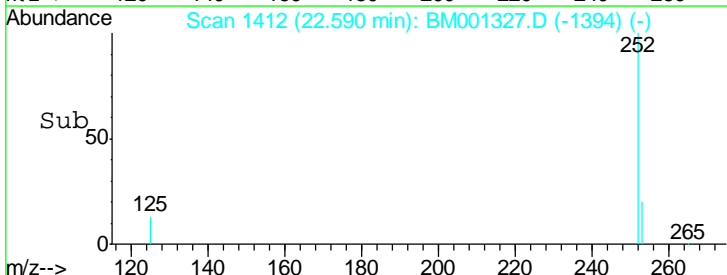
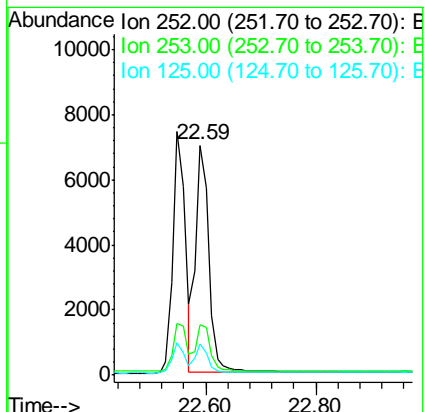
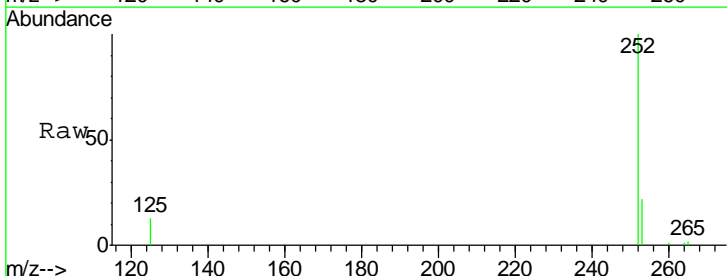
Tgt Ion	Resp	Lower	Upper
252	11458		
253	21.3	17.8	26.6
125	13.6	10.4	15.6

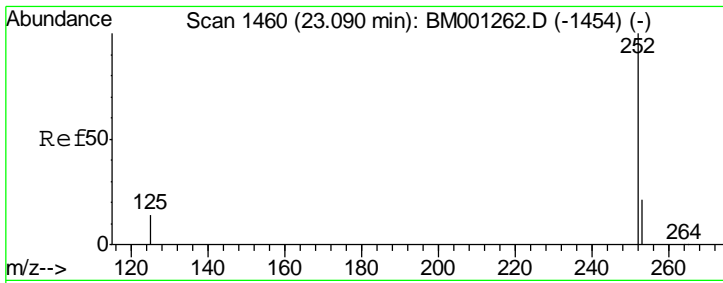
Manual Integrations  
 APPROVED  
 apatel  
 5/18/2015 12:16:17 PM



#32  
 Benzo(k)fluoranthene  
 Concen: 0.98 ng  
 RT: 22.59 min Scan# 1412  
 Delta R.T. -0.01 min  
 Lab File: BM001327.D  
 Acq: 15 May 2015 14:26

Tgt Ion	Resp	Lower	Upper
252	11838		
253	21.9	18.6	27.8
125	13.5	10.2	15.4



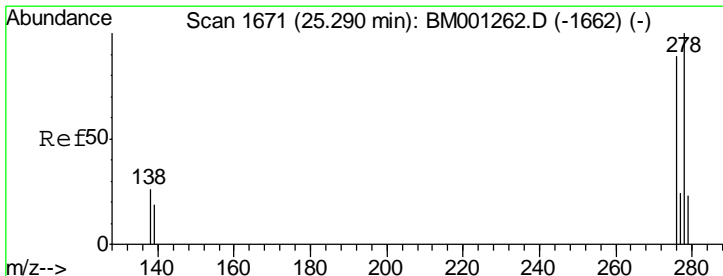
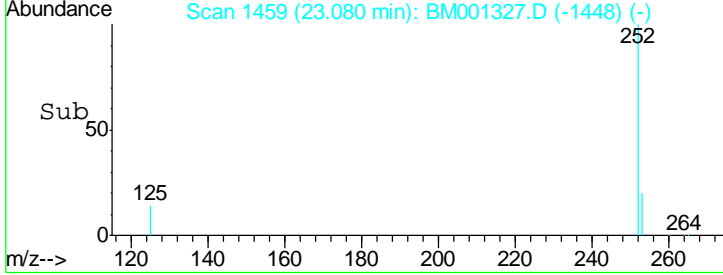
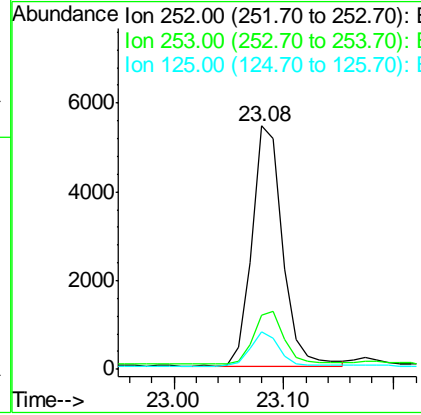
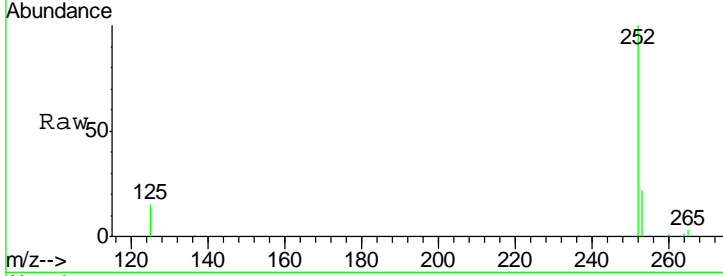


#33  
 Benzo(a)pyrene  
 Concen: 0.94 ng  
 RT: 23.08 min Scan# 1459  
 Delta R.T. -0.01 min  
 Lab File: BM001327.D  
 Acq: 15 May 2015 14:26

Instrument :  
 BNA\_M  
 ClientSampled :  
 SSTDCCC001

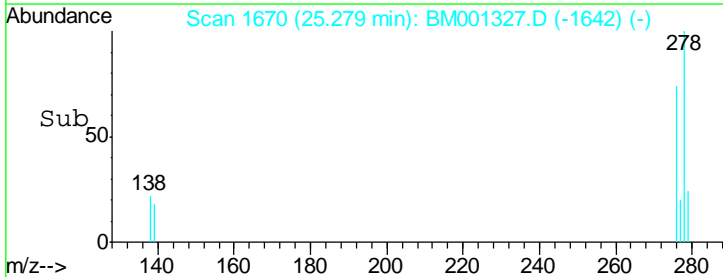
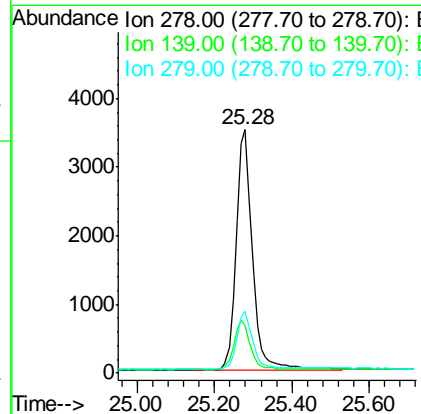
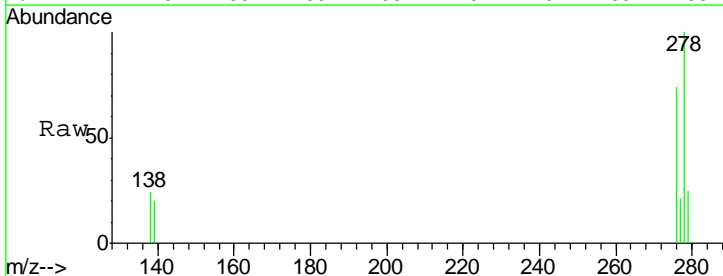
Tgt Ion	Resp	Lower	Upper
252	10391		
253	22.0	18.3	27.5
125	15.2	12.2	18.2

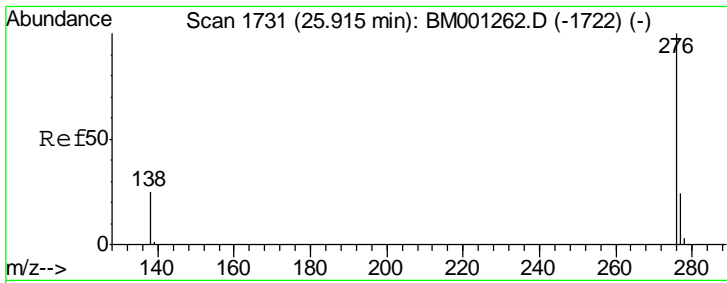
Manual Integrations  
 APPROVED  
 apatel  
 5/18/2015 12:16:17 PM



#34  
 Dibenzo(a,h)anthracene  
 Concen: 0.99 ng  
 RT: 25.28 min Scan# 1670  
 Delta R.T. -0.01 min  
 Lab File: BM001327.D  
 Acq: 15 May 2015 14:26

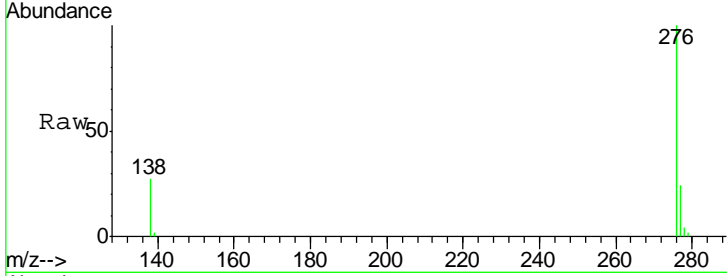
Tgt Ion	Resp	Lower	Upper
278	10265		
139	19.6	16.6	24.8
279	25.2	20.0	30.0





#35  
 Benzo(g,h,i)perylene  
 Concen: 0.99 ng  
 RT: 25.89 min Scan# 1729  
 Delta R.T. -0.02 min  
 Lab File: BM001327.D  
 Acq: 15 May 2015 14:26

Instrument :  
 BNA\_M  
 ClientSampleId :  
 SSTDCCC001



Tgt Ion	Resp	Lower	Upper
276	11234		
276	100		
277	24.2	19.9	29.9
138	27.3	21.0	31.4

Manual Integrations  
 APPROVED  
 apatel  
 5/18/2015 12:16:17 PM

