

Data Path : Z:\HPCHEM1\BNA_M\DATA\BM051816\
 Data File : BM005479.D
 Acq On : 18 May 2016 20:56
 Operator : UM/SJ
 Sample : H2841-12
 Misc :
 ALS Vial : 20 Sample Multiplier: 1

Instrument :
 BNA_M
 ClientSampleId :
 D9WS7

Manual Integrations
 APPROVED

umangi
 5/19/2016 7:15:57 PM

Quant Time: May 19 02:24:25 2016
 Quant Method : Z:\HPCHEM1\BNA_M\METHODS\SOM02.2-EPA-BM051816.M
 Quant Title : SVOA CALIBRATION
 QLast Update : Wed May 18 14:47:27 2016
 Response via : Initial Calibration

Internal Standards	R.T.	QIon	Response	Conc	Units	Dev(Min)
1) 1,4-Dichlorobenzene-d4	7.84	152	36822	20.00	ng/ul	0.00
18) Naphthalene-d8	10.63	136	177281	20.00	ng/ul	0.00
35) Acenaphthene-d10	14.46	164	120795	20.00	ng/ul	0.00
61) Phenanthrene-d10	17.20	188	324621	20.00	ng/ul	0.00
75) Chrysene-d12	21.38	240	534838	20.00	ng/ul	0.00
83) Perylene-d12	23.66	264	645734	20.00	ng/ul	0.00

System Monitoring Compounds

3) 1,4-Dioxane-d8	3.32	96	1895	1.98	ng/uL	0.00
5) Phenol-d5	6.99	99	48193	13.62	ng/ul	0.00
7) Bis-(2-Chloroethyl)ether-d	7.17	67	29193	15.07	ng/ul	0.00
9) 2-Chlorophenol-d4	7.37	132	38423	14.14	ng/ul	0.00
13) 4-Methylphenol-d8	8.53	113	41568	13.80	ng/ul	0.00
19) Nitrobenzene-d5	8.99	128	18267	14.31	ng/ul	0.00
22) 2-Nitrophenol-d4	9.71	143	19409	13.94	ng/ul	0.00
26) 2,4-Dichlorophenol-d3	10.24	165	41083	14.85	ng/ul	0.00
29) 4-Chloroaniline-d4	10.76	131	40984m	12.88	ng/ul	0.00
43) Dimethylphthalate-d6	13.87	166	166697	16.79	ng/ul	0.00
46) Acenaphthylene-d8	14.16	160	191138	16.30	ng/ul	0.00
51) 4-Nitrophenol-d4	14.65	143	28696	14.08	ng/ul	0.00
57) Fluorene-d10	15.46	176	153822	17.55	ng/ul	0.00
62) 4,6-Dinitro-2-methylphenol	15.56	200	20294	11.86	ng/ul	0.00
70) Anthracene-d10	17.30	188	261621	17.52	ng/ul	0.00
76) Pyrene-d10	19.59	212	367024	17.07	ng/ul	0.00
87) Benzo(a)pyrene-d12	23.52	264	533779	18.49	ng/ul	0.00

Target Compounds

Target Compounds	R.T.	QIon	Response	Conc	Units	Qvalue
44) Dimethylphthalate	13.92	163	42824	4.23	ng/ul	98

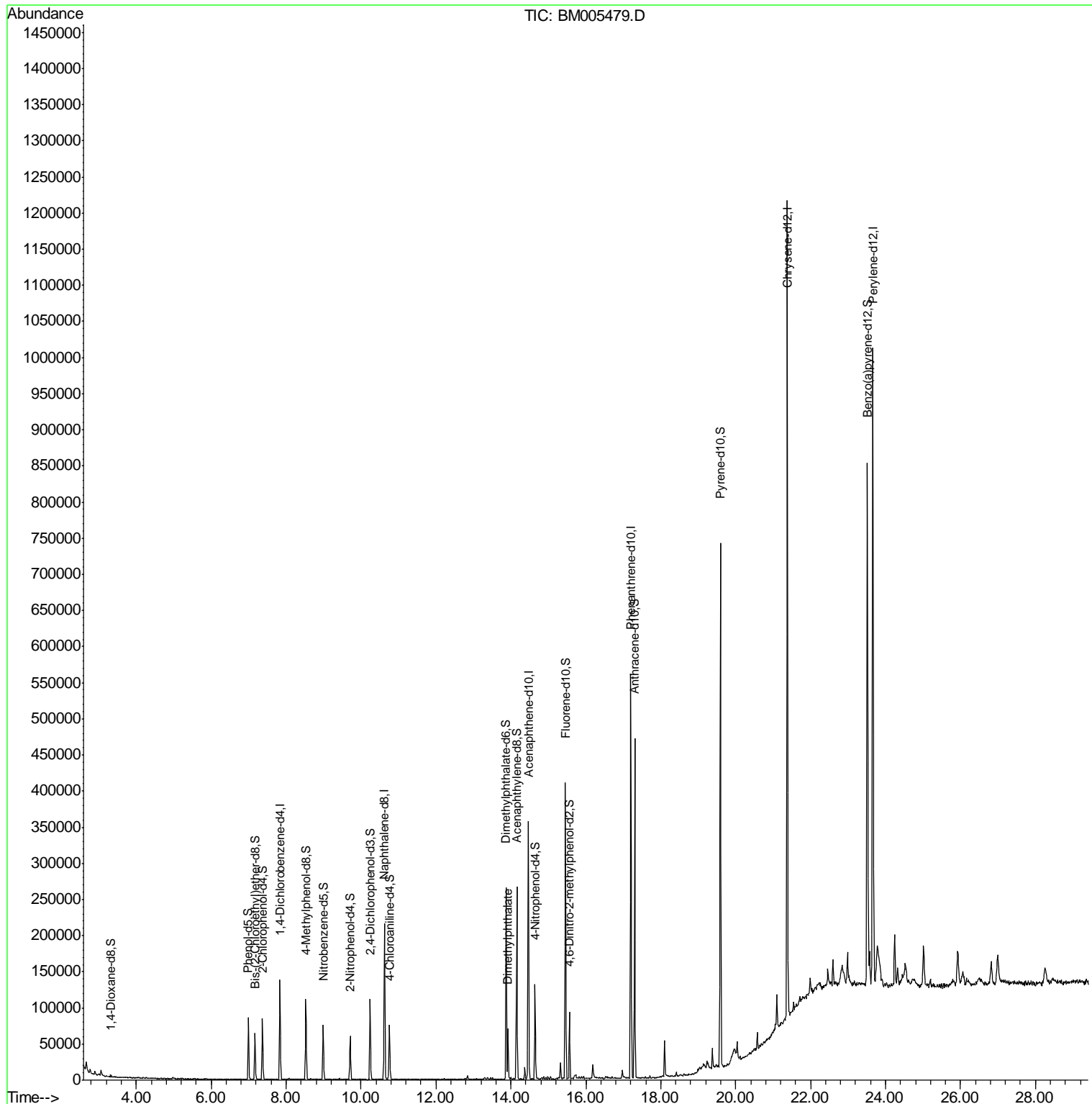
(#) = qualifier out of range (m) = manual integration (+) = signals summed

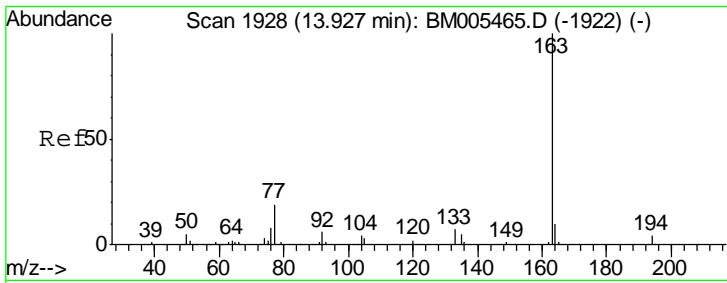
Data Path : Z:\HPCHEM1\BNA_M\DATA\BM051816\
 Data File : BM005479.D
 Acq On : 18 May 2016 20:56
 Operator : UM/SJ
 Sample : H2841-12
 Misc :
 ALS Vial : 20 Sample Multiplier: 1

Instrument :
 BNA_M
 ClientSampled :
 D9WS7

Manual Integrations
 APPROVED
 umangi
 5/19/2016 7:15:57 PM

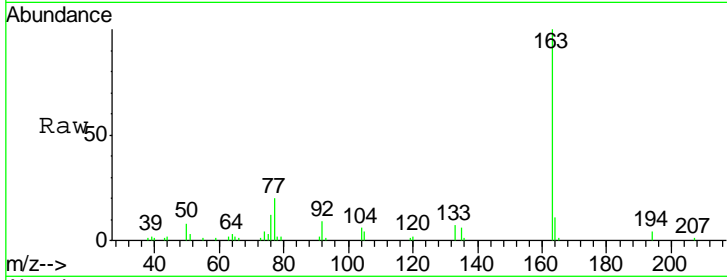
Quant Time: May 19 02:24:25 2016
 Quant Method : Z:\HPCHEM1\BNA_M\METHODS\SOM02.2-EPA-BM051816.M
 Quant Title : SVOA CALIBRATION
 QLast Update : Wed May 18 14:47:27 2016
 Response via : Initial Calibration





#44
 Dimethylphthalate
 Concen: 4.23 ng/ul
 RT: 13.92 min Scan# 1927
 Delta R.T. -0.01 min
 Lab File: BM005479.D
 Acq: 18 May 2016 20:56

Instrument :
 BNA_M
 ClientSampled :
 D9WS7



Tgt Ion:163 Resp: 42824

Ion	Ratio	Lower	Upper
163	100		
194	3.8	3.4	5.0
164	11.0	7.9	11.9

Manual Integrations
 APPROVED
 umangi
 5/19/2016 7:15:57 PM

