

Data Path : Z:\HPCHEM1\BNA_M\Data\BM051916\
 Data File : BM005500.D
 Acq On : 19 May 2016 15:50
 Operator : UM/SJ
 Sample : SSTDCCC020
 Misc :
 ALS Vial : 2 Sample Multiplier: 1

Instrument :
 BNA_M
 ClientSampleId :
 SSTD02047

Quant Time: May 19 16:22:00 2016
 Quant Method : Z:\HPCHEM1\BNA_M\METHODS\SOM02.2-EPA-BM051816.M
 Quant Title : SVOA CALIBRATION
 QLast Update : Wed May 18 14:47:27 2016
 Response via : Initial Calibration

Internal Standards	R.T.	QIon	Response	Conc	Units	Dev(Min)
1) 1,4-Dichlorobenzene-d4	7.84	152	46835	20.00	ng/ul	0.00
18) Naphthalene-d8	10.63	136	245689	20.00	ng/ul	0.00
35) Acenaphthene-d10	14.47	164	180237	20.00	ng/ul	0.00
61) Phenanthrene-d10	17.20	188	466041	20.00	ng/ul	0.00
75) Chrysene-d12	21.38	240	640254	20.00	ng/ul	0.00
83) Perylene-d12	23.67	264	874929	20.00	ng/ul	0.00

System Monitoring Compounds

3) 1,4-Dioxane-d8	3.31	96	7782	6.40	ng/uL	0.00
5) Phenol-d5	6.99	99	85540	19.01	ng/ul	0.00
7) Bis-(2-Chloroethyl)ether-d	7.17	67	46919	19.04	ng/ul	0.00
9) 2-Chlorophenol-d4	7.37	132	65051	18.82	ng/ul	0.00
13) 4-Methylphenol-d8	8.53	113	75894	19.81	ng/ul	0.00
19) Nitrobenzene-d5	8.99	128	33421	18.89	ng/ul	0.00
22) 2-Nitrophenol-d4	9.71	143	34344	17.80	ng/ul	0.00
26) 2,4-Dichlorophenol-d3	10.25	165	78753	20.54	ng/ul	0.00
29) 4-Chloroaniline-d4	10.76	131	113055	25.63	ng/ul	0.00
43) Dimethylphthalate-d6	13.87	166	299414	20.21	ng/ul	0.00
46) Acenaphthylene-d8	14.16	160	354879	20.29	ng/ul	0.00
51) 4-Nitrophenol-d4	14.64	143	64442	21.20	ng/ul	0.00
57) Fluorene-d10	15.46	176	264013	20.19	ng/ul	0.00
62) 4,6-Dinitro-2-methylphenol	15.57	200	45770	18.63	ng/ul	0.00
70) Anthracene-d10	17.30	188	443192	20.68	ng/ul	0.00
76) Pyrene-d10	19.60	212	505507	19.64	ng/ul	0.00
87) Benzo(a)pyrene-d12	23.52	264	772288	19.74	ng/ul	0.00

Target Compounds

Target Compounds	R.T.	QIon	Response	Conc	Units	Qvalue
2) 1,4-Dioxane	3.35	88	8626	6.34	ng/uL#	76
4) Benzaldehyde	6.98	77	54303	24.80	ng/ul	97
6) Phenol	7.02	94	93054	19.68	ng/ul	97
8) Bis(2-Chloroethyl)ether	7.26	93	64025	18.73	ng/ul	97
10) 2-Chlorophenol	7.40	128	67797	19.08	ng/ul	98
11) 2-Methylphenol	8.27	108	72159	19.63	ng/ul	98
12) 2,2'-oxybis(1-Chloropropan	8.37	45	86514	17.95	ng/ul	95
14) Acetophenone	8.65	105	117935	20.23	ng/ul	95
15) N-Nitroso-di-n-propylamine	8.63	70	63900	19.58	ng/ul	97
16) 4-Methylphenol	8.59	108	83130	20.13	ng/ul	97
17) Hexachloroethane	8.92	117	24914	19.19	ng/ul	96
20) Nitrobenzene	9.03	77	87393	19.82	ng/ul	100
21) Isophorone	9.55	82	181774	20.15	ng/ul#	95
23) 2-Nitrophenol	9.74	139	38820	18.55	ng/ul	97
24) 2,4-Dimethylphenol	9.80	107	98204	21.15	ng/ul	98
25) Bis(2-Chloroethoxy)methane	10.04	93	101689	19.04	ng/ul	98
27) 2,4-Dichlorophenol	10.27	162	80505	20.72	ng/ul	98
28) Naphthalene	10.68	128	245405	19.67	ng/ul	99
30) 4-Chloroaniline	10.78	127	116568	24.83	ng/ul	95
31) Hexachlorobutadiene	10.96	225	46401	21.03	ng/ul	100
32) Caprolactam	11.53	113	36833	24.88	ng/ul	92
33) 4-Chloro-3-methylphenol	11.90	107	102795	21.48	ng/ul	97
34) 2-Methylnaphthalene	12.29	142	202196	20.61	ng/ul	99

Data Path : Z:\HPCHEM1\BNA_M\Data\BM051916\
 Data File : BM005500.D
 Acq On : 19 May 2016 15:50
 Operator : UM/SJ
 Sample : SSTDCCC020
 Misc :
 ALS Vial : 2 Sample Multiplier: 1

Instrument :
 BNA_M
 ClientSampleId :
 SSTD02047

Quant Time: May 19 16:22:00 2016
 Quant Method : Z:\HPCHEM1\BNA_M\METHODS\SOM02.2-EPA-BM051816.M
 Quant Title : SVOA CALIBRATION
 QLast Update : Wed May 18 14:47:27 2016
 Response via : Initial Calibration

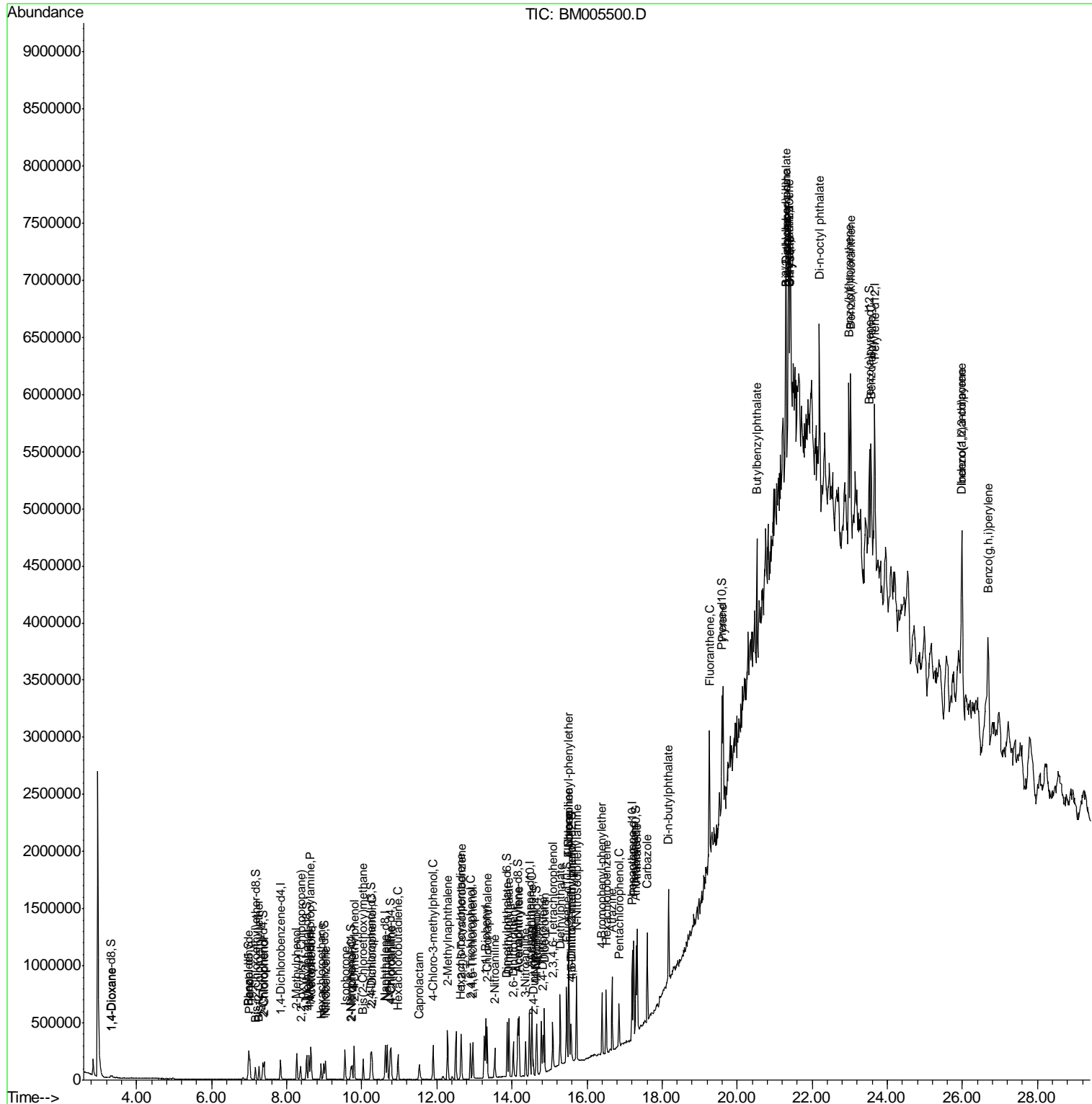
Internal Standards	R.T.	QIon	Response	Conc	Units	Dev(Min)
36) 1,2,4,5-Tetrachlorobenzene	12.66	216	107454	19.63	ng/ul	100
37) Hexachlorocyclopentadiene	12.63	237	48554	16.01	ng/ul	95
38) 2,4,6-Trichlorophenol	12.89	196	71925	18.97	ng/ul	95
39) 2,4,5-Trichlorophenol	12.96	196	84301	20.30	ng/ul	98
40) 1,1'-Biphenyl	13.30	154	273830	18.95	ng/ul	99
41) 2-Chloronaphthalene	13.34	162	214233	19.29	ng/ul	97
42) 2-Nitroaniline	13.54	65	69006	19.70	ng/ul	92
44) Dimethylphthalate	13.92	163	308564	20.43	ng/ul	100
45) 2,6-Dinitrotoluene	14.04	165	58138	19.99	ng/ul	95
47) Acenaphthylene	14.19	152	367279	20.27	ng/ul	100
48) 3-Nitroaniline	14.36	138	68121	21.97	ng/ul#	97
49) Acenaphthene	14.53	153	251149	20.29	ng/ul	97
50) 2,4-Dinitrophenol	14.57	184	31305	18.47	ng/ul	90
52) 4-Nitrophenol	14.66	109	67072	24.65	ng/ul	81
53) Dibenzofuran	14.87	168	362375	20.08	ng/ul	98
54) 2,4-Dinitrotoluene	14.82	165	89631	20.31	ng/ul	96
55) 2,3,4,6-Tetrachlorophenol	15.09	232	79704	20.29	ng/ul#	99
56) Diethylphthalate	15.29	149	323912	20.26	ng/ul	98
58) Fluorene	15.52	166	303142	20.31	ng/ul	99
59) 4-Chlorophenyl-phenylether	15.51	204	147649	20.56	ng/ul	96
60) 4-Nitroaniline	15.52	138	82306	22.65	ng/ul#	86
63) 4,6-Dinitro-2-methylphenol	15.59	198	50422	18.83	ng/ul#	90
64) N-Nitrosodiphenylamine	15.72	169	275280	20.82	ng/ul	99
65) 4-Bromophenyl-phenylether	16.40	248	99272	21.08	ng/ul	97
66) Hexachlorobenzene	16.52	284	116549	21.28	ng/ul	96
67) Atrazine	16.67	200	114448	24.17	ng/ul	100
68) Pentachlorophenol	16.86	266	71024	20.12	ng/ul	93
69) Phenanthrene	17.25	178	528939	19.95	ng/ul	99
71) Anthracene	17.34	178	541053	20.64	ng/ul	98
72) Carbazole	17.61	167	515987	21.73	ng/ul	99
73) Di-n-butylphthalate	18.17	149	583701	19.84	ng/ul	98
74) Fluoranthene	19.26	202	635847	20.51	ng/ul#	92
77) Pyrene	19.62	202	662552	19.31	ng/ul#	93
78) Butylbenzylphthalate	20.53	149	285902	19.63	ng/ul	100
79) 3,3'-Dichlorobenzidine	21.30	252	280426	22.88	ng/ul	99
80) Benzo(a)anthracene	21.37	228	746682	19.85	ng/ul	98
81) Bis(2-ethylhexyl)phthalate	21.30	149	439202	20.16	ng/ul#	95
82) Chrysene	21.42	228	706758	19.86	ng/ul	97
84) Di-n-octyl phthalate	22.20	149	855296	18.42	ng/ul#	43
85) Benzo(b)fluoranthene	22.98	252	977832	19.53	ng/ul#	93
86) Benzo(k)fluoranthene	23.03	252	882650	18.14	ng/ul#	92
88) Benzo(a)pyrene	23.57	252	983649	19.77	ng/ul#	94
89) Indeno(1,2,3-cd)pyrene	25.98	276	1432833	21.87	ng/ul#	91
90) Dibenzo(a,h)anthracene	26.00	278	1199460	22.04	ng/ul	98
91) Benzo(g,h,i)perylene	26.69	276	1246150	21.95	ng/ul#	94

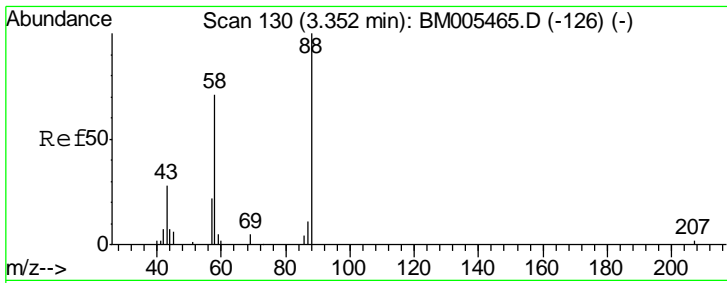
(#) = qualifier out of range (m) = manual integration (+) = signals summed

Data Path : Z:\HPCHEM1\BNA_M\Data\BM051916\
 Data File : BM005500.D
 Acq On : 19 May 2016 15:50
 Operator : UM/SJ
 Sample : SSTDCCC020
 Misc :
 ALS Vial : 2 Sample Multiplier: 1

Instrument :
 BNA_M
 Client Sample ID :
 SSTD02047

Quant Time: May 19 16:22:00 2016
 Quant Method : Z:\HPCHEM1\BNA_M\METHODS\SOM02.2-EPA-BM051816.M
 Quant Title : SVOA CALIBRATION
 QLast Update : Wed May 18 14:47:27 2016
 Response via : Initial Calibration

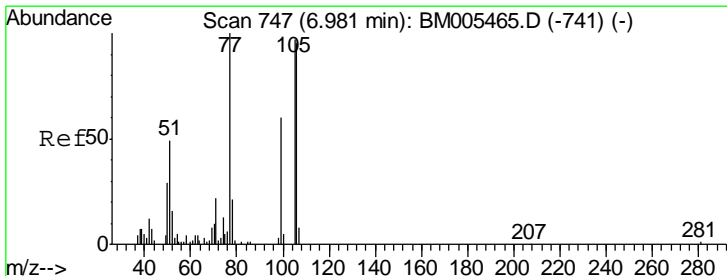
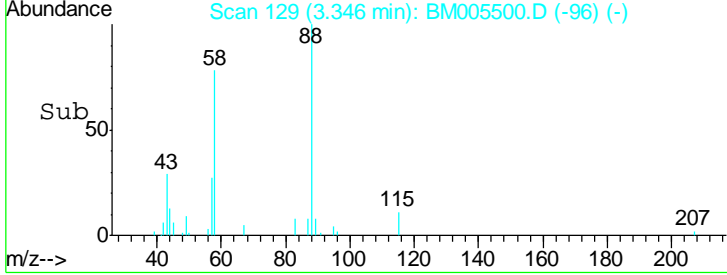
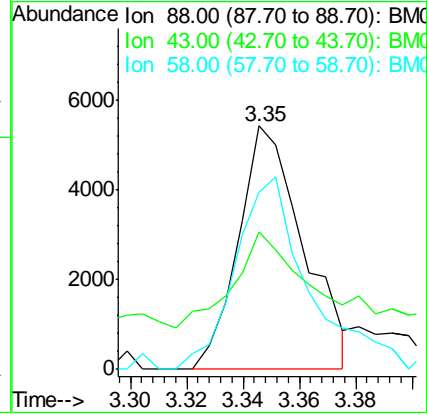
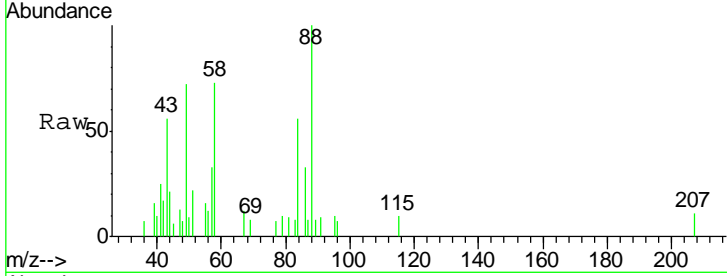




#2
 1,4-Dioxane
 Concen: 6.34 ng/uL
 RT: 3.35 min Scan# 129
 Delta R.T. -0.01 min
 Lab File: BM005500.D
 Acq: 19 May 2016 15:50

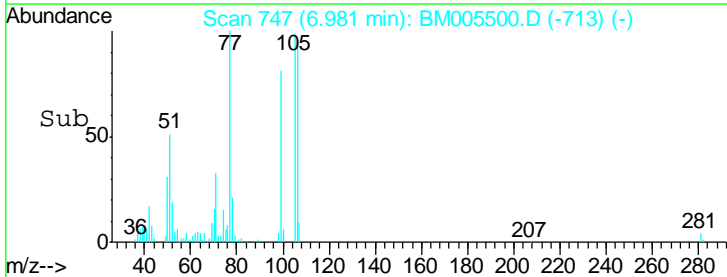
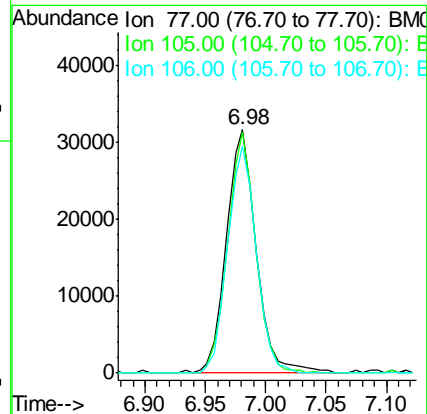
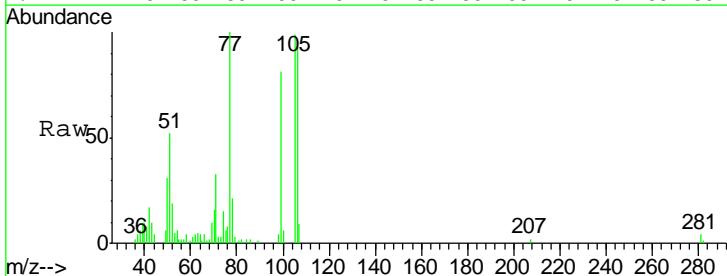
Instrument :
 BNA_M
 ClientSampled :
 SSTD02047

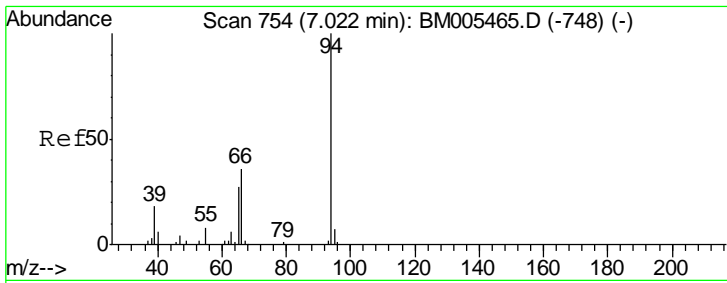
Tgt Ion	Resp	Lower	Upper
88	100		
43	41.0	19.3	28.9#
58	89.4	57.9	86.9#



#4
 Benzaldehyde
 Concen: 24.80 ng/ul
 RT: 6.98 min Scan# 747
 Delta R.T. 0.00 min
 Lab File: BM005500.D
 Acq: 19 May 2016 15:50

Tgt Ion	Resp	Lower	Upper
77	100		
105	99.1	77.6	116.4
106	93.1	77.9	116.9

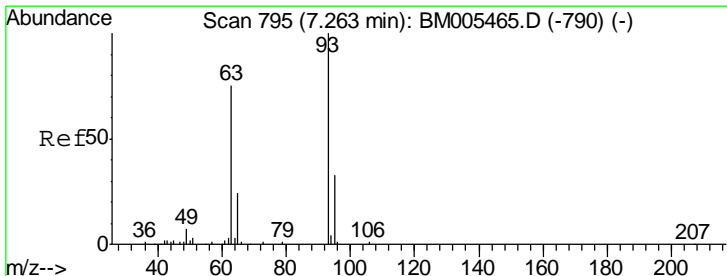
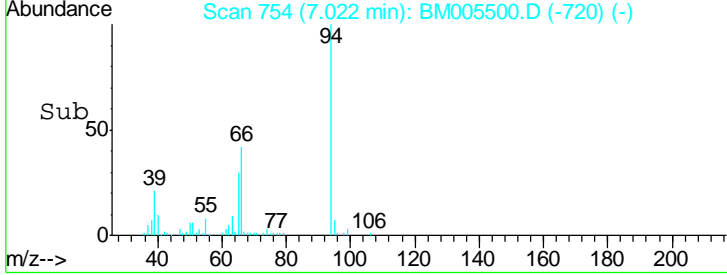
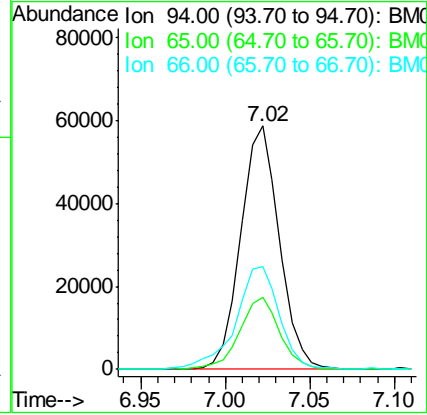
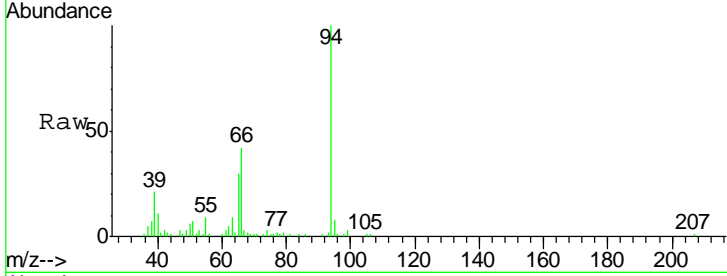




#6
 Phenol
 Concen: 19.68 ng/ul
 RT: 7.02 min Scan# 754
 Delta R.T. 0.00 min
 Lab File: BM005500.D
 Acq: 19 May 2016 15:50

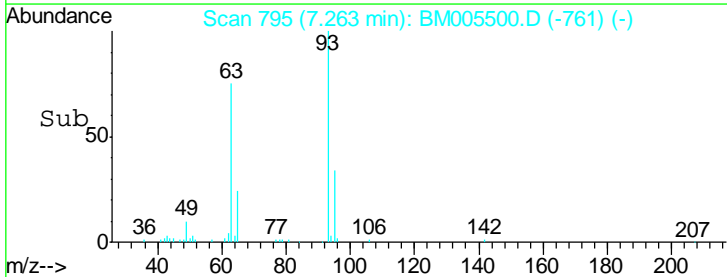
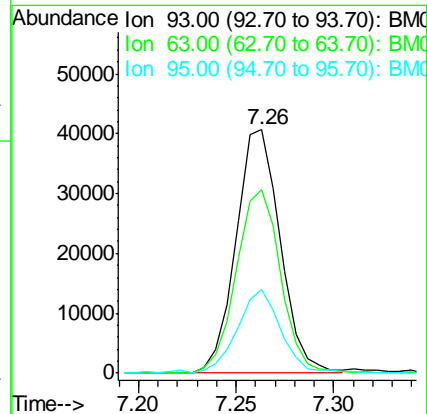
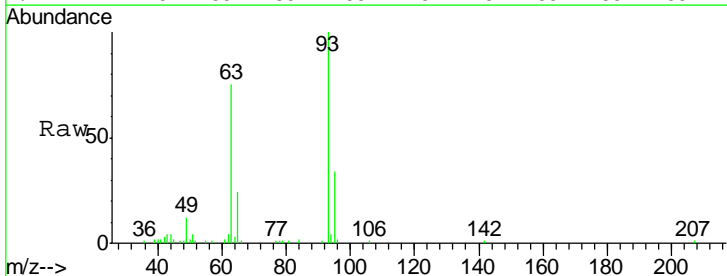
Instrument :
 BNA_M
 ClientSampled :
 SSTD02047

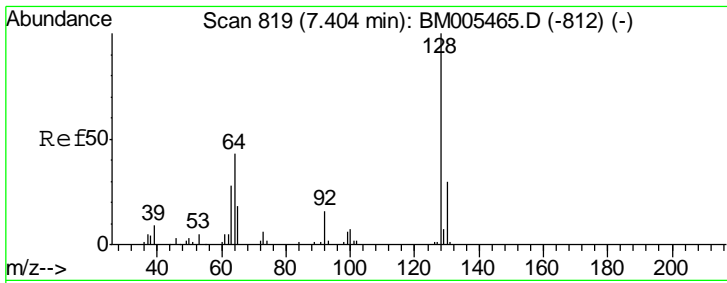
Tgt Ion	Resp	Lower	Upper
94	93054		
65	29.8	22.7	34.1
66	42.0	31.7	47.5



#8
 Bis(2-Chloroethyl)ether
 Concen: 18.73 ng/ul
 RT: 7.26 min Scan# 795
 Delta R.T. 0.00 min
 Lab File: BM005500.D
 Acq: 19 May 2016 15:50

Tgt Ion	Resp	Lower	Upper
93	64025		
63	75.2	60.6	90.8
95	34.4	24.2	36.4

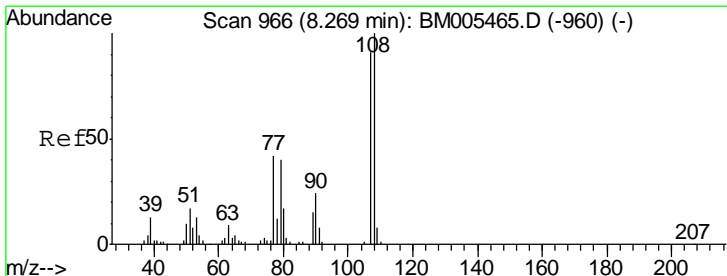
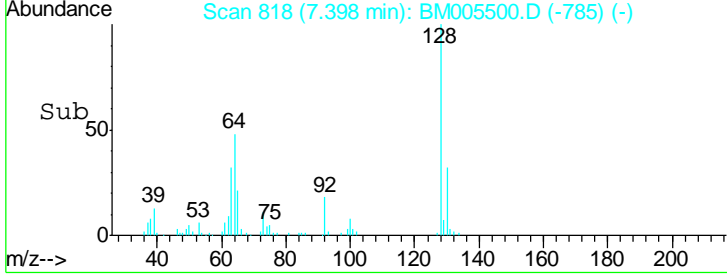
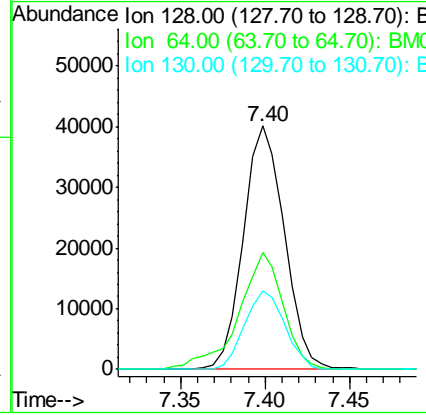
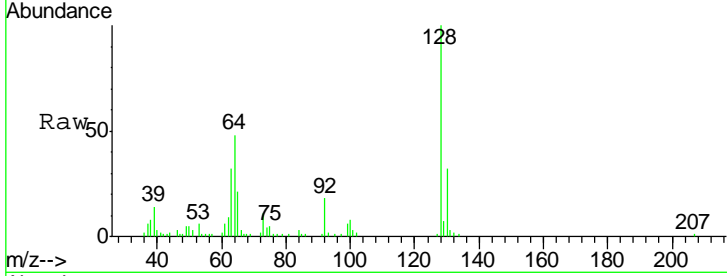




#10
 2-Chlorophenol
 Concen: 19.08 ng/ul
 RT: 7.40 min Scan# 818
 Delta R.T. -0.01 min
 Lab File: BM005500.D
 Acq: 19 May 2016 15:50

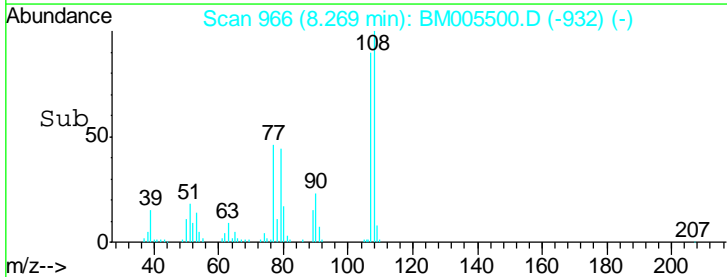
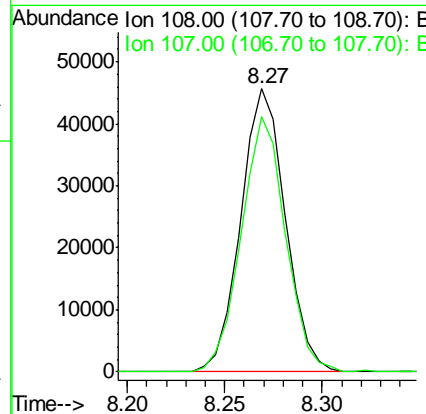
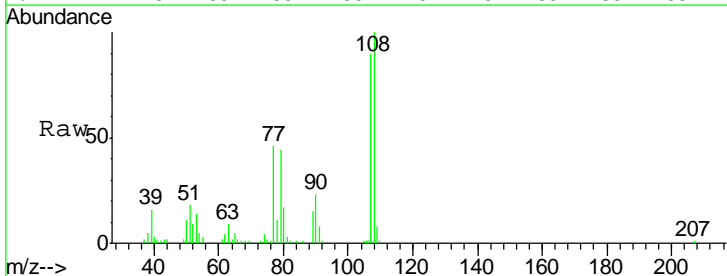
Instrument :
 BNA_M
 ClientSampleID :
 SST02047

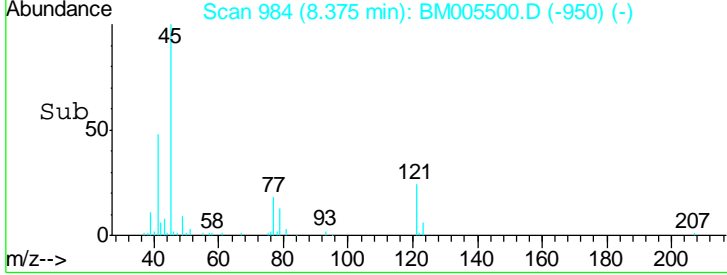
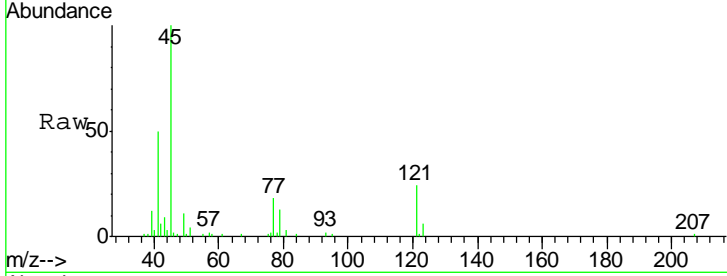
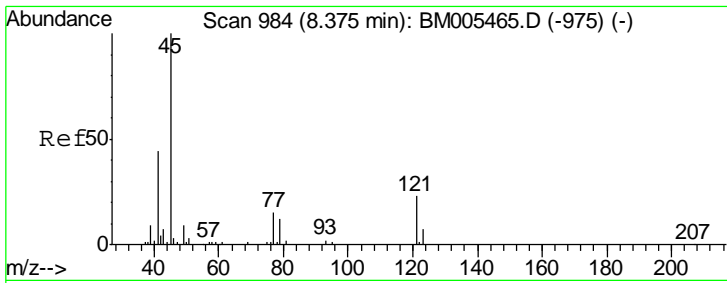
Tgt Ion	Resp	Lower	Upper
128	67797		
64	48.2	37.8	56.8
130	32.1	24.9	37.3



#11
 2-Methylphenol
 Concen: 19.63 ng/ul
 RT: 8.27 min Scan# 966
 Delta R.T. 0.00 min
 Lab File: BM005500.D
 Acq: 19 May 2016 15:50

Tgt Ion	Resp	Lower	Upper
108	72159		
107	90.0	73.4	110.0

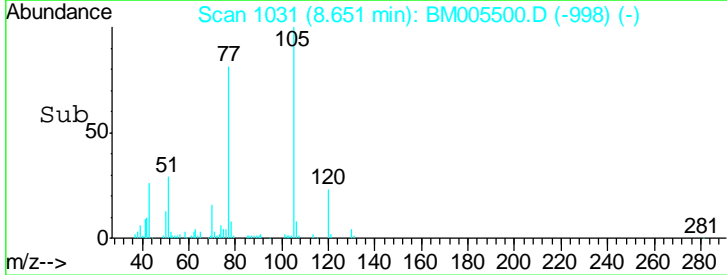
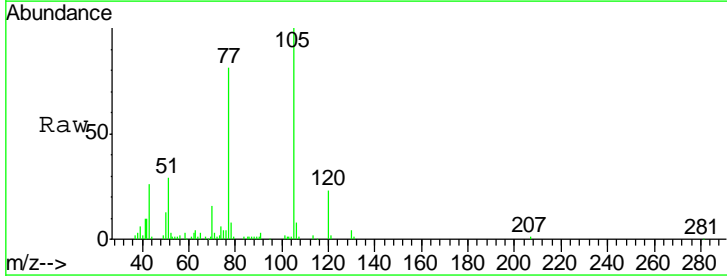
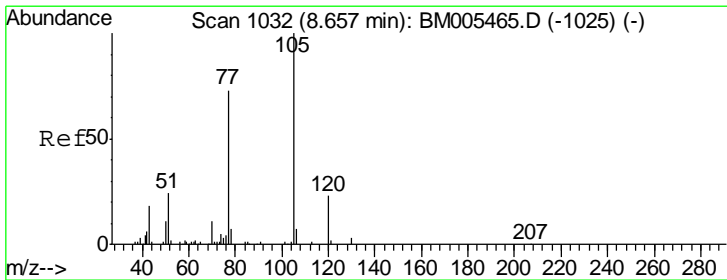
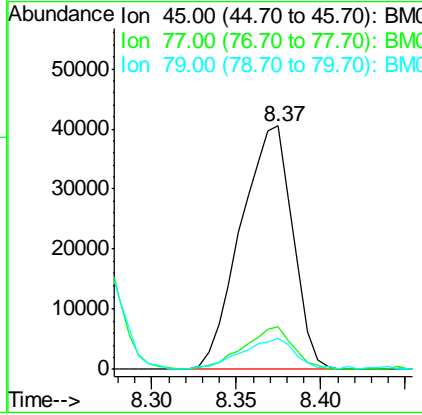




#12
 2,2'-oxybis(1-Chloropropane)
 Concen: 17.95 ng/ul
 RT: 8.37 min Scan# 984
 Delta R.T. 0.00 min
 Lab File: BM005500.D
 Acq: 19 May 2016 15:50

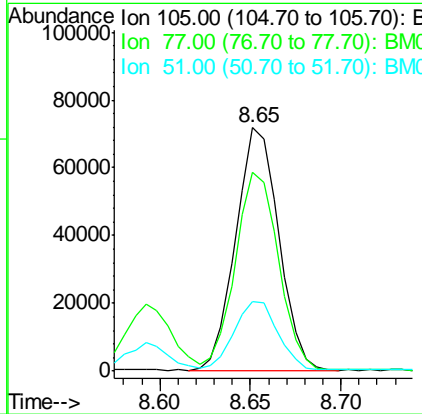
Instrument :
 BNA_M
 ClientSampled :
 SST02047

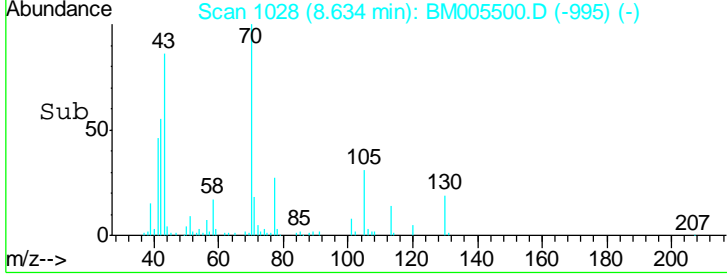
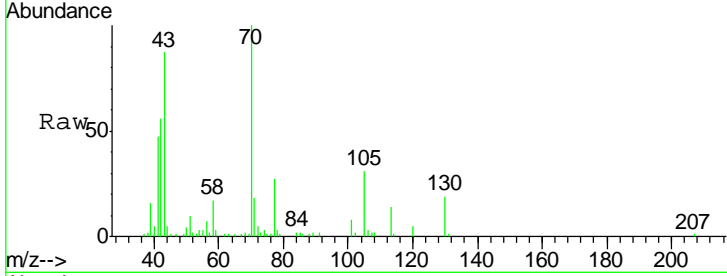
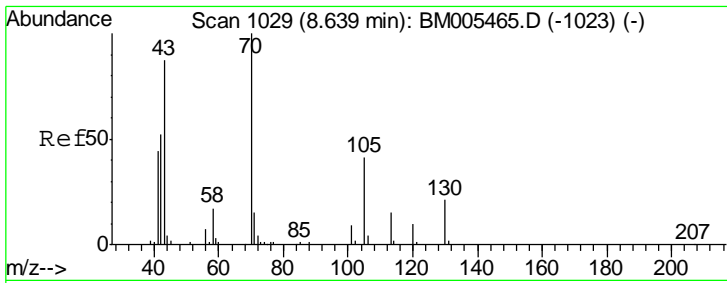
Tgt Ion	Resp	Lower	Upper
45	86514		
77	17.5	12.1	18.1
79	12.6	9.0	13.4



#14
 Acetophenone
 Concen: 20.23 ng/ul
 RT: 8.65 min Scan# 1031
 Delta R.T. -0.01 min
 Lab File: BM005500.D
 Acq: 19 May 2016 15:50

Tgt Ion	Resp	Lower	Upper
105	117935		
77	81.4	61.2	91.8
51	28.7	21.2	31.8

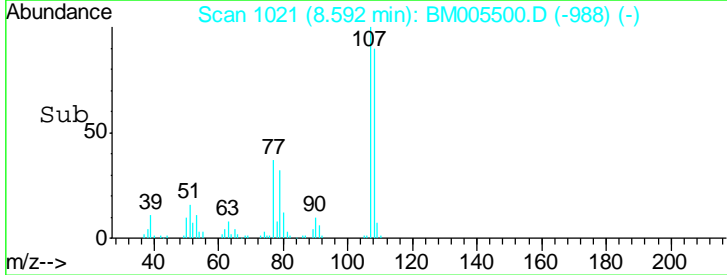
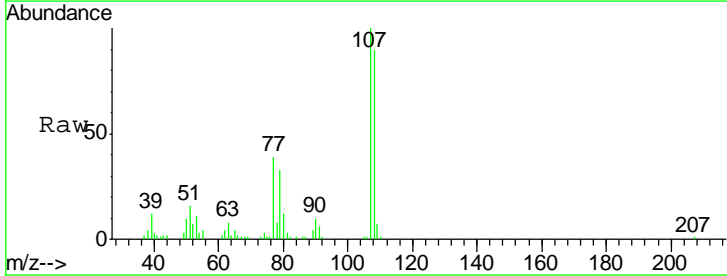
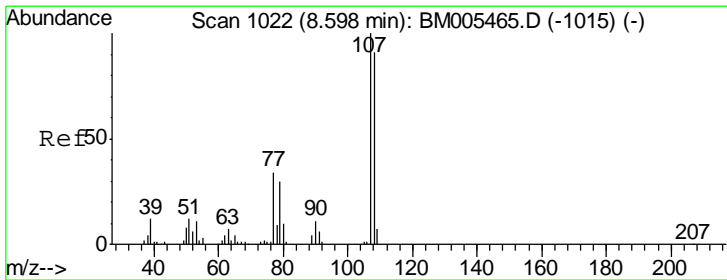
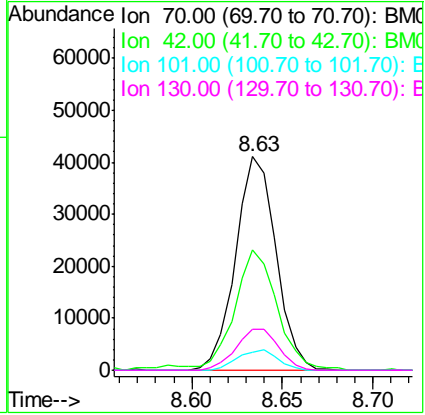




#15
 N-Nitroso-di-n-propylamine
 Concen: 19.58 ng/ul
 RT: 8.63 min Scan# 1028
 Delta R.T. -0.01 min
 Lab File: BM005500.D
 Acq: 19 May 2016 15:50

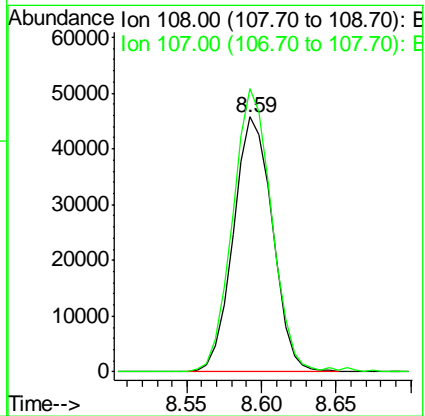
Instrument :
 BNA_M
ClientSampleId :
 SSTD02047

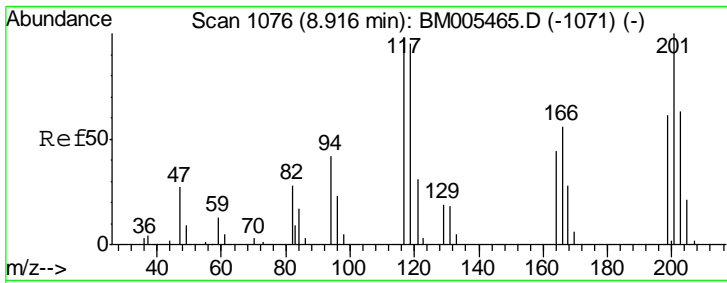
Tgt Ion	Resp	Lower	Upper
70	100		
42	56.1	42.8	64.2
101	8.5	7.8	11.6
130	19.0	15.7	23.5



#16
 4-Methylphenol
 Concen: 20.13 ng/ul
 RT: 8.59 min Scan# 1021
 Delta R.T. -0.01 min
 Lab File: BM005500.D
 Acq: 19 May 2016 15:50

Tgt Ion	Resp	Lower	Upper
108	100		
107	111.1	91.1	136.7

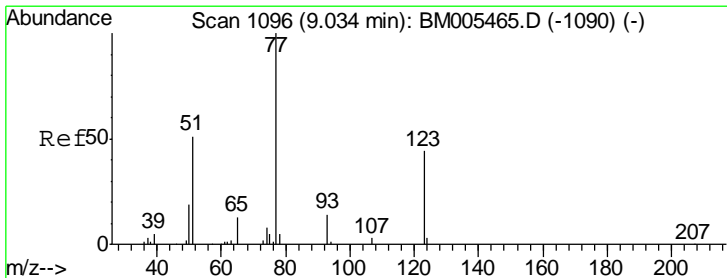
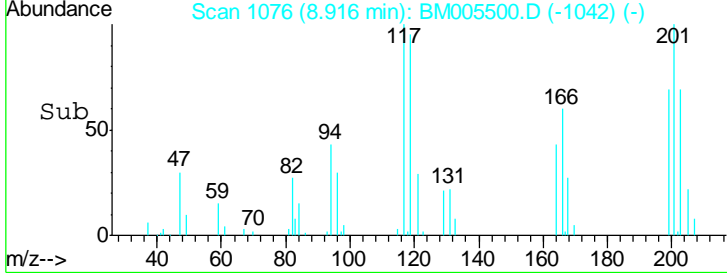
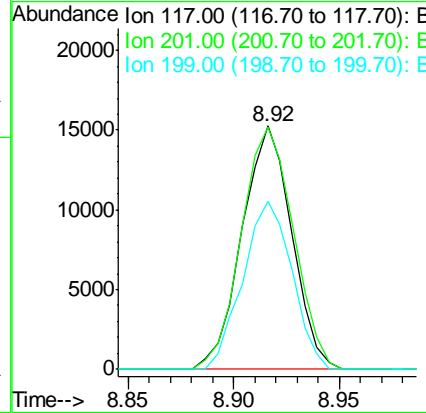
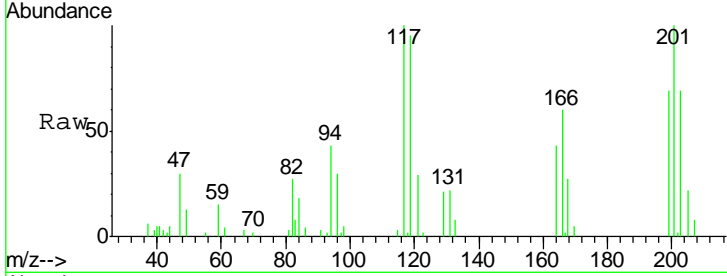




#17
 Hexachloroethane
 Concen: 19.19 ng/ul
 RT: 8.92 min Scan# 1076
 Delta R.T. 0.00 min
 Lab File: BM005500.D
 Acq: 19 May 2016 15:50

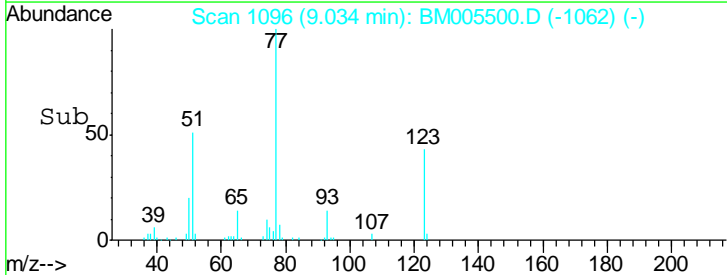
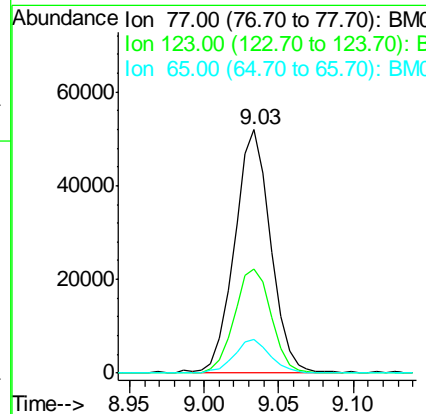
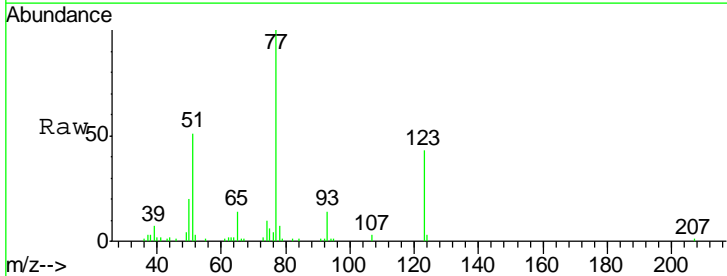
Instrument :
 BNA_M
 ClientSampleId :
 SSTD02047

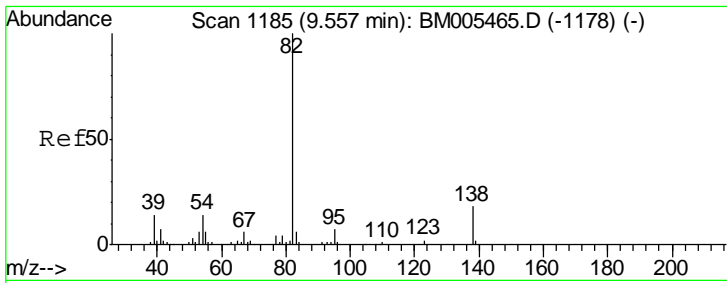
Tgt Ion	Resp	Lower	Upper
117	100		
201	99.6	78.1	117.1
199	68.8	50.2	75.2



#20
 Nitrobenzene
 Concen: 19.82 ng/ul
 RT: 9.03 min Scan# 1096
 Delta R.T. 0.00 min
 Lab File: BM005500.D
 Acq: 19 May 2016 15:50

Tgt Ion	Resp	Lower	Upper
77	100		
123	42.8	34.1	51.1
65	13.7	11.0	16.4

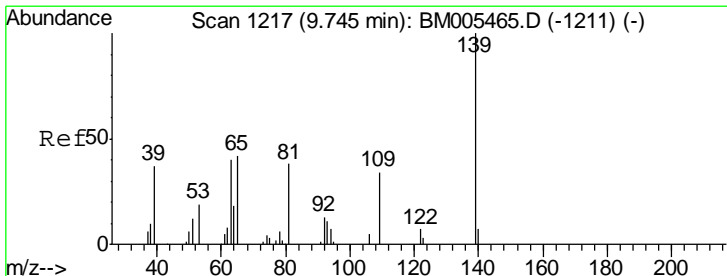
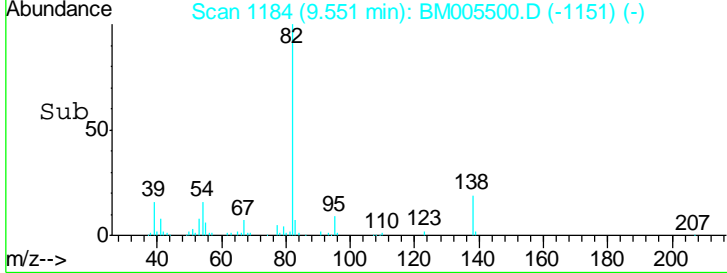
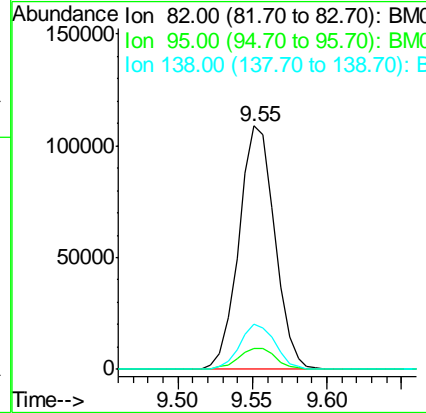
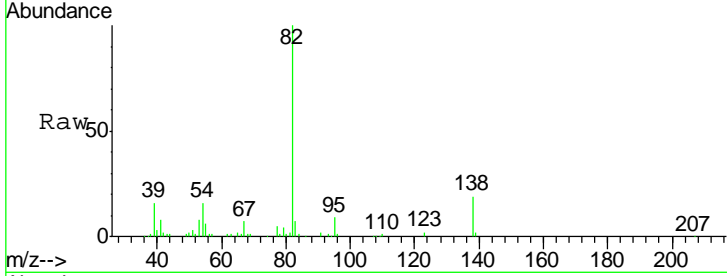




#21
 Isophorone
 Concen: 20.15 ng/ul
 RT: 9.55 min Scan# 1184
 Delta R.T. -0.01 min
 Lab File: BM005500.D
 Acq: 19 May 2016 15:50

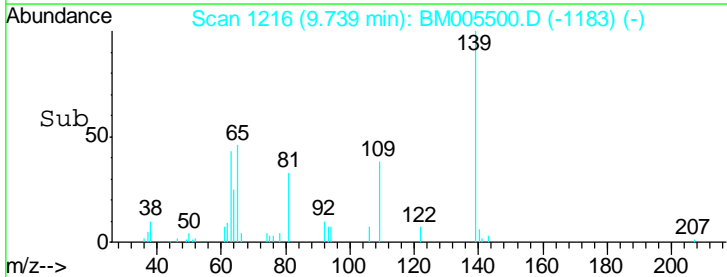
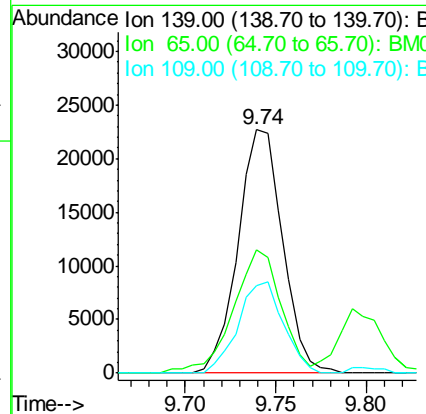
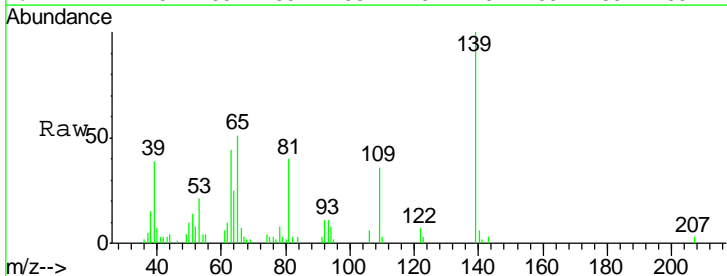
Instrument :
 BNA_M
 ClientSampleID :
 SST02047

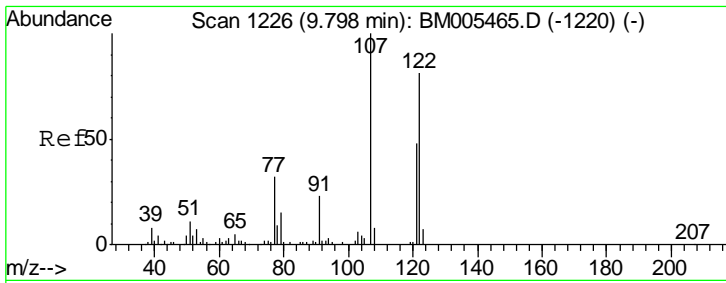
Tgt Ion	Resp	Lower	Upper
82	181774		
95	8.6	5.4	8.0#
138	18.6	13.4	20.2



#23
 2-Nitrophenol
 Concen: 18.55 ng/ul
 RT: 9.74 min Scan# 1216
 Delta R.T. -0.01 min
 Lab File: BM005500.D
 Acq: 19 May 2016 15:50

Tgt Ion	Resp	Lower	Upper
139	38820		
65	50.7	41.7	62.5
109	36.0	26.2	39.4

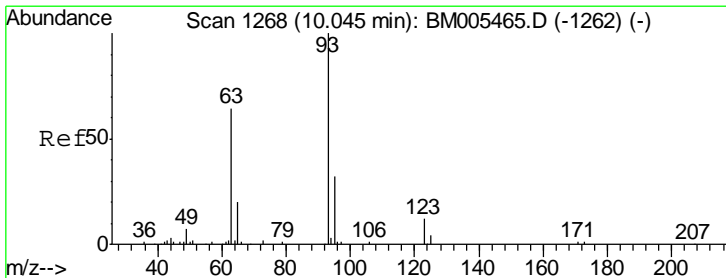
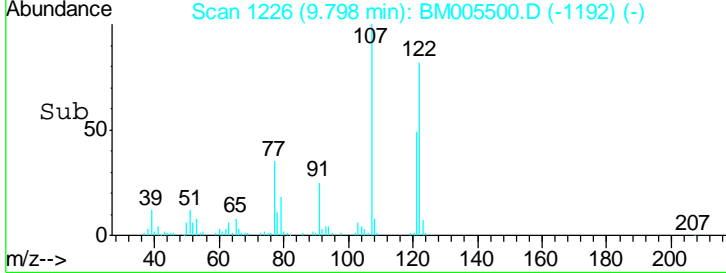
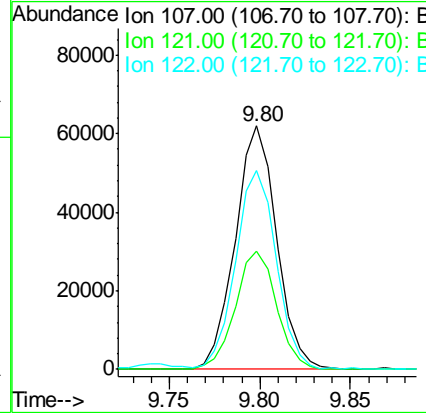
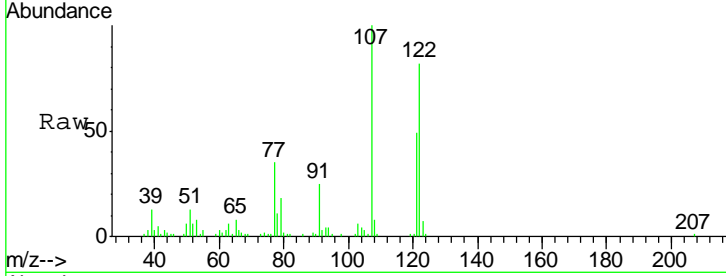




#24
 2,4-Dimethylphenol
 Concen: 21.15 ng/ul
 RT: 9.80 min Scan# 1226
 Delta R.T. 0.00 min
 Lab File: BM005500.D
 Acq: 19 May 2016 15:50

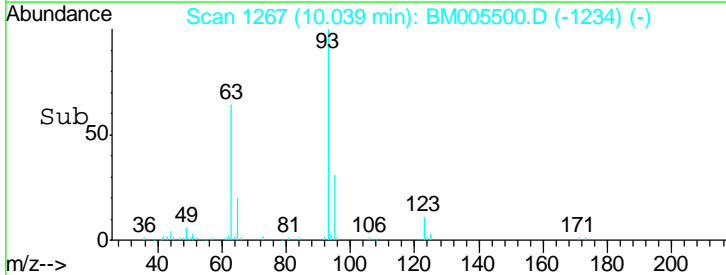
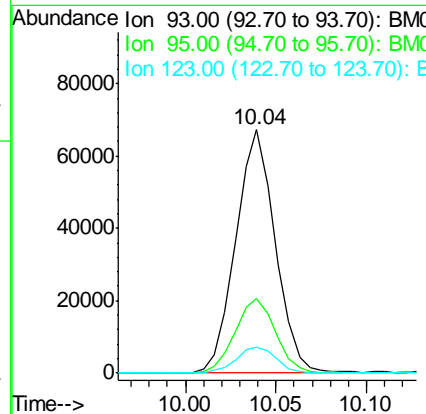
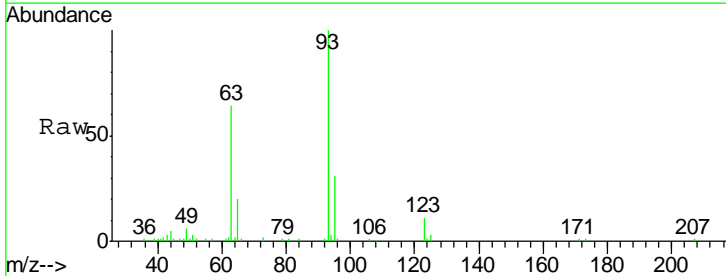
Instrument :
 BNA_M
 ClientSampled :
 SSTD02047

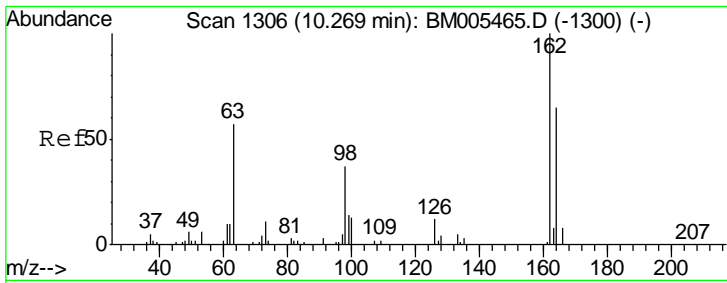
Tgt Ion	Resp	Lower	Upper
107	100		
121	48.5	39.1	58.7
122	81.9	67.8	101.6



#25
 Bis(2-Chloroethoxy)methane
 Concen: 19.04 ng/ul
 RT: 10.04 min Scan# 1267
 Delta R.T. -0.01 min
 Lab File: BM005500.D
 Acq: 19 May 2016 15:50

Tgt Ion	Resp	Lower	Upper
93	100		
95	30.6	25.2	37.8
123	10.6	9.0	13.6

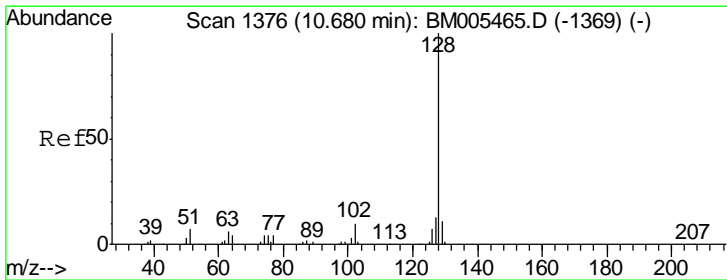
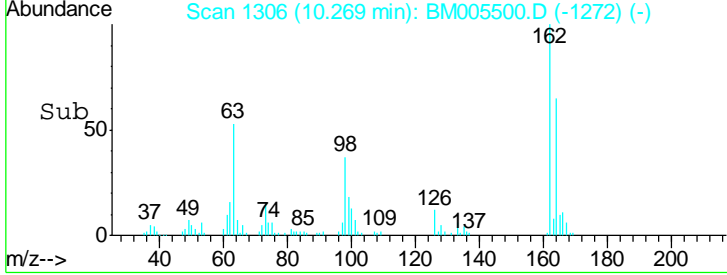
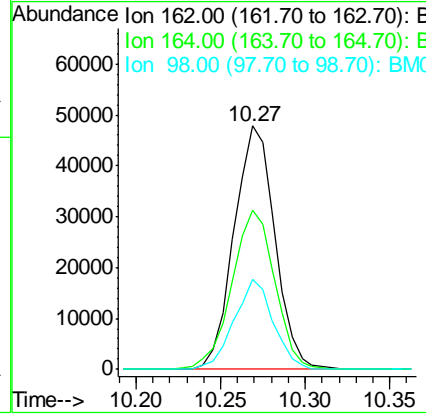
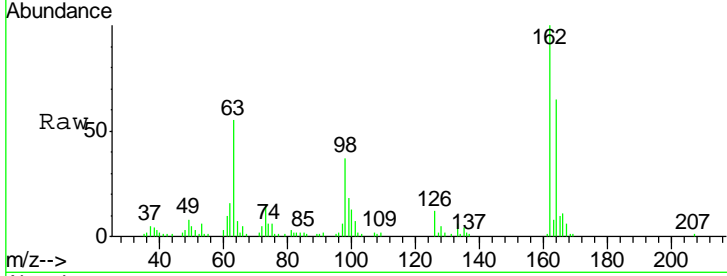




#27
 2,4-Dichlorophenol
 Concen: 20.72 ng/ul
 RT: 10.27 min Scan# 1306
 Delta R.T. 0.00 min
 Lab File: BM005500.D
 Acq: 19 May 2016 15:50

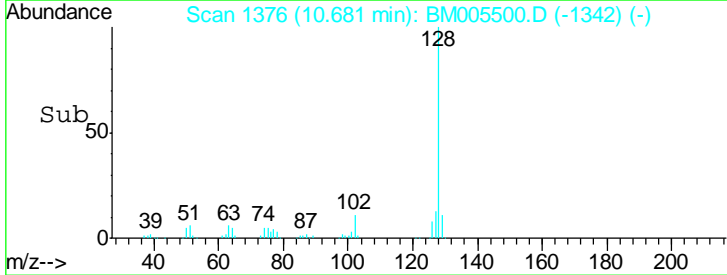
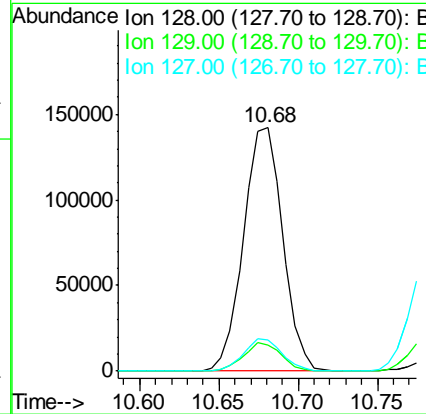
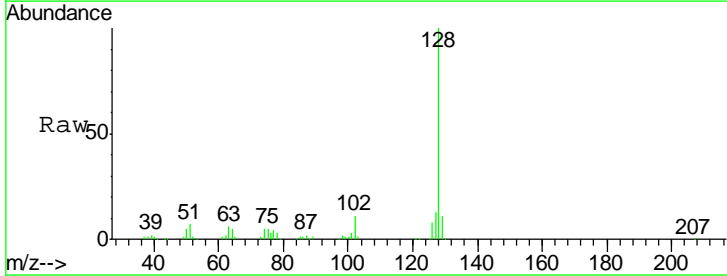
Instrument :
 BNA_M
 ClientSampled :
 SSTD02047

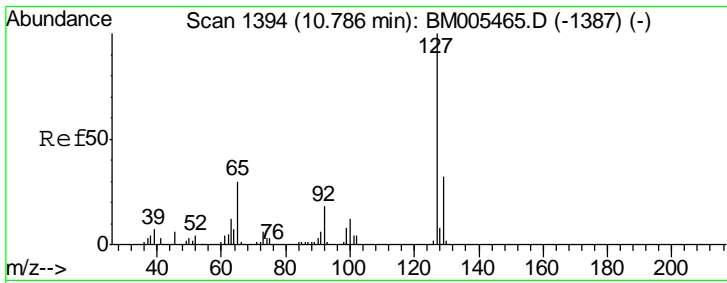
Tgt Ion	Resp	Lower	Upper
162	100		
164	65.2	51.5	77.3
98	36.7	31.2	46.8



#28
 Naphthalene
 Concen: 19.67 ng/ul
 RT: 10.68 min Scan# 1376
 Delta R.T. 0.00 min
 Lab File: BM005500.D
 Acq: 19 May 2016 15:50

Tgt Ion	Resp	Lower	Upper
128	100		
129	10.6	8.4	12.6
127	12.9	10.8	16.2

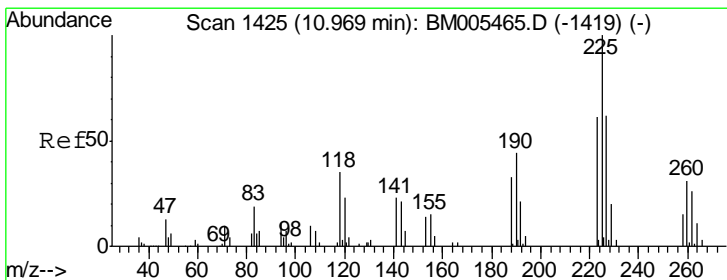
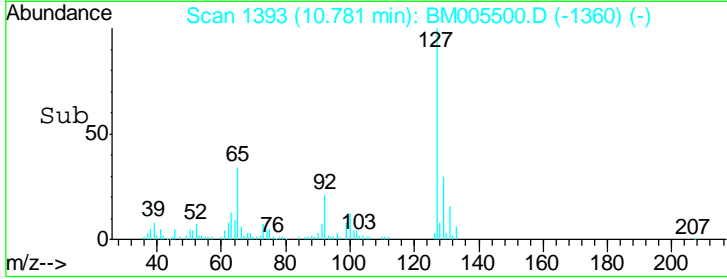
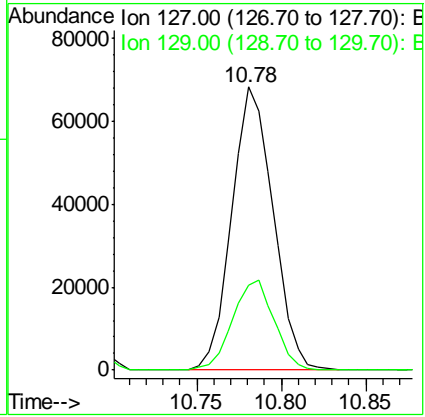
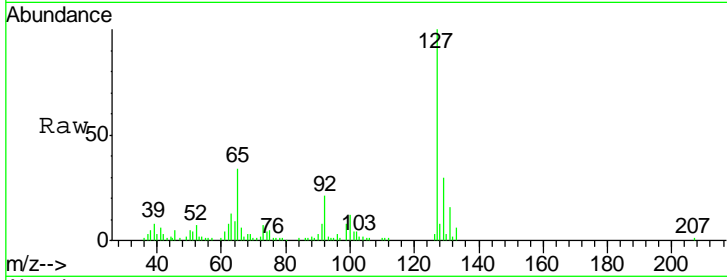




#30
 4-Chloroaniline
 Concen: 24.83 ng/ul
 RT: 10.78 min Scan# 1393
 Delta R.T. -0.01 min
 Lab File: BM005500.D
 Acq: 19 May 2016 15:50

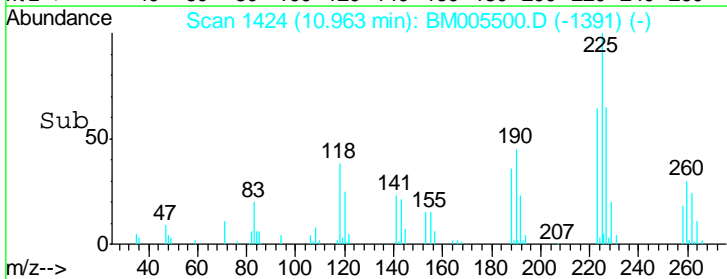
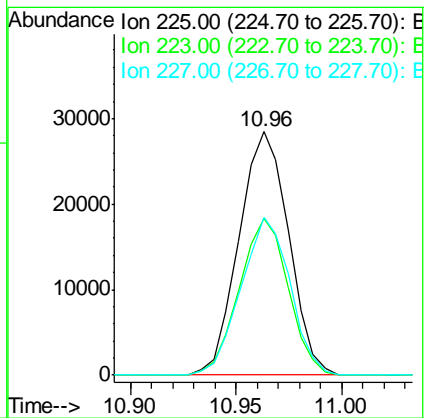
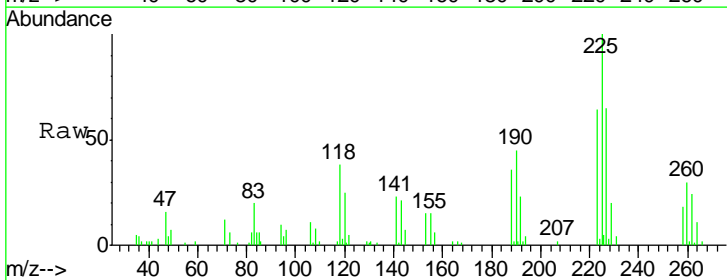
Instrument :
 BNA_M
 ClientSampled :
 SSTD02047

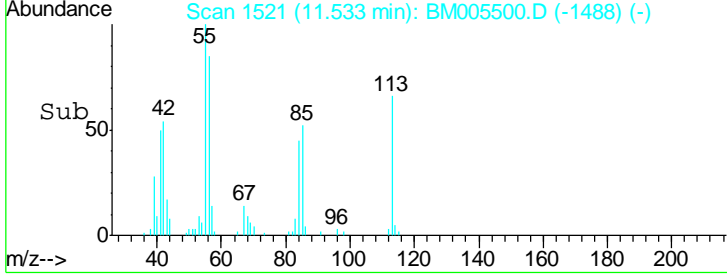
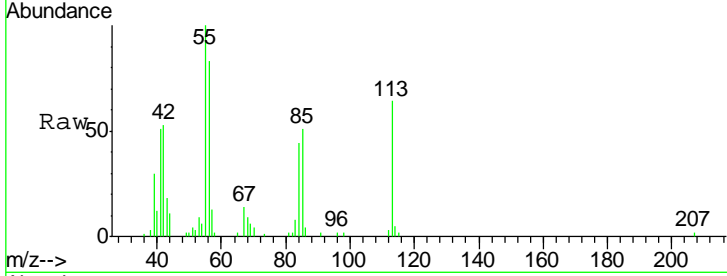
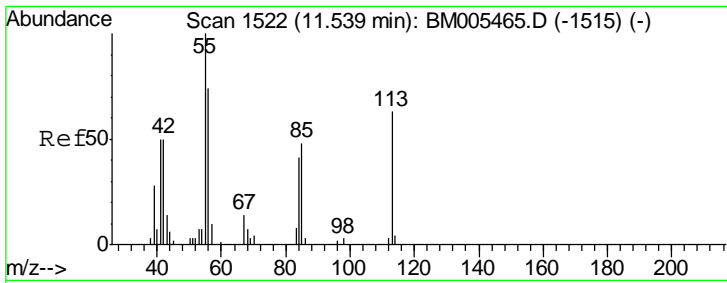
Tgt Ion:127 Resp: 116568
 Ion Ratio Lower Upper
 127 100
 129 30.2 26.5 39.7



#31
 Hexachlorobutadiene
 Concen: 21.03 ng/ul
 RT: 10.96 min Scan# 1424
 Delta R.T. -0.01 min
 Lab File: BM005500.D
 Acq: 19 May 2016 15:50

Tgt Ion:225 Resp: 46401
 Ion Ratio Lower Upper
 225 100
 223 64.3 51.5 77.3
 227 64.8 51.8 77.6

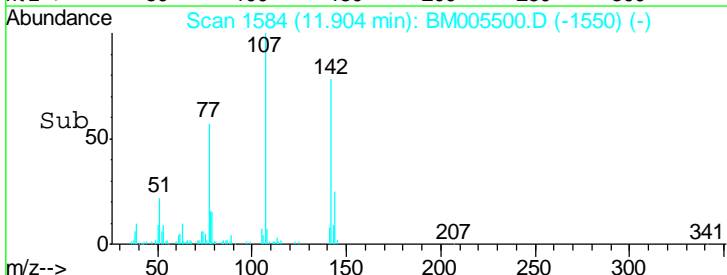
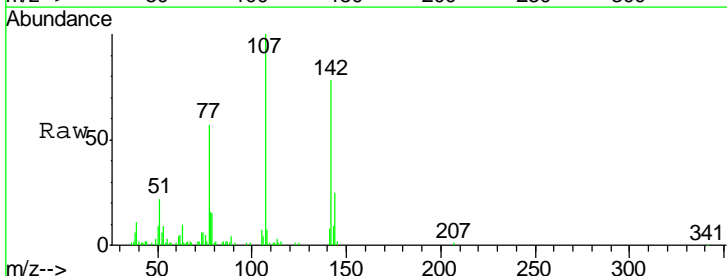
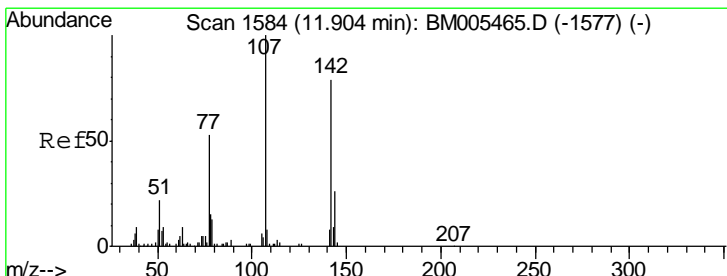
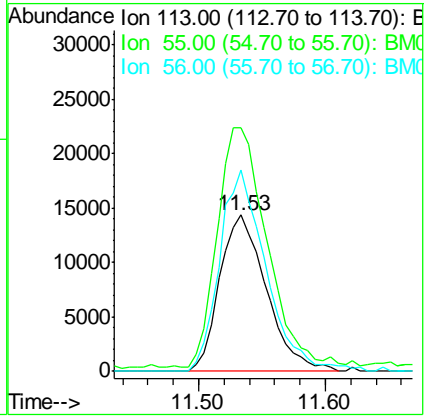




#32
 Caprolactam
 Concen: 24.88 ng/ul
 RT: 11.53 min Scan# 1521
 Delta R.T. -0.01 min
 Lab File: BM005500.D
 Acq: 19 May 2016 15:50

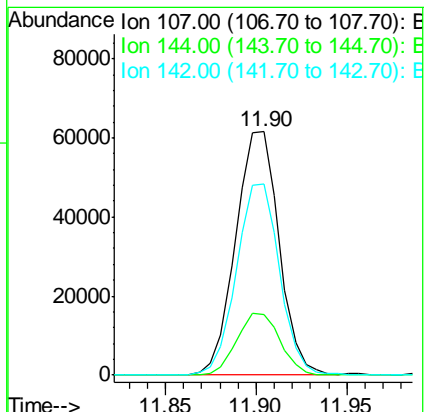
Instrument :
 BNA_M
 ClientSampled :
 SSTD02047

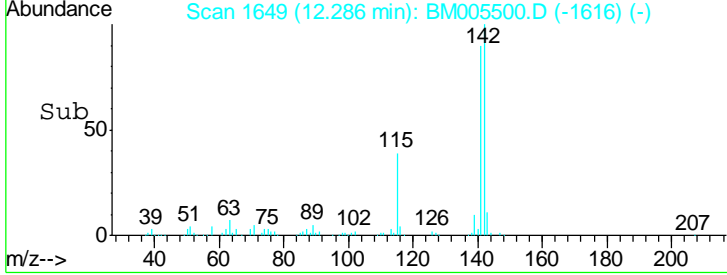
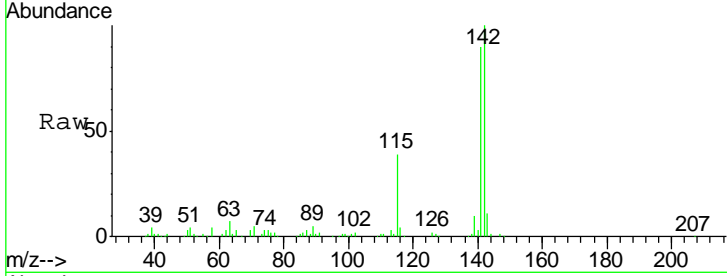
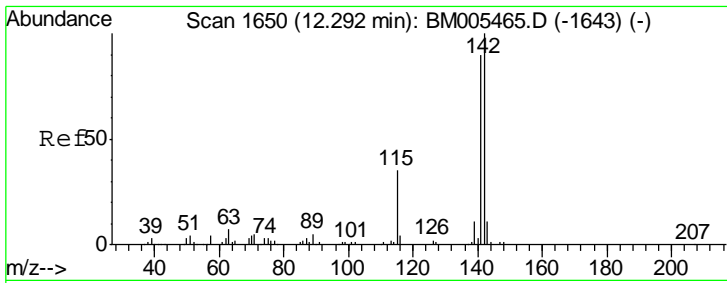
Tgt Ion	Resp	Lower	Upper
113	36833		
55	155.8	134.6	201.8
56	128.8	96.6	145.0



#33
 4-Chloro-3-methylphenol
 Concen: 21.48 ng/ul
 RT: 11.90 min Scan# 1584
 Delta R.T. 0.00 min
 Lab File: BM005500.D
 Acq: 19 May 2016 15:50

Tgt Ion	Resp	Lower	Upper
107	102795		
144	25.1	19.3	28.9
142	78.3	60.8	91.2

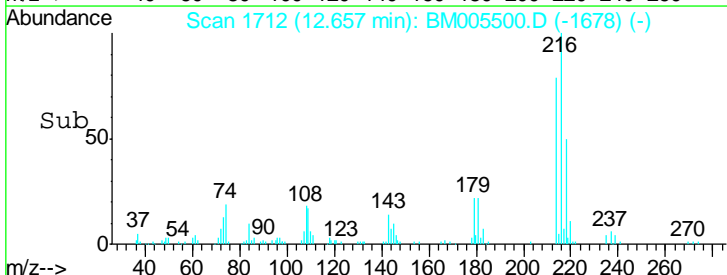
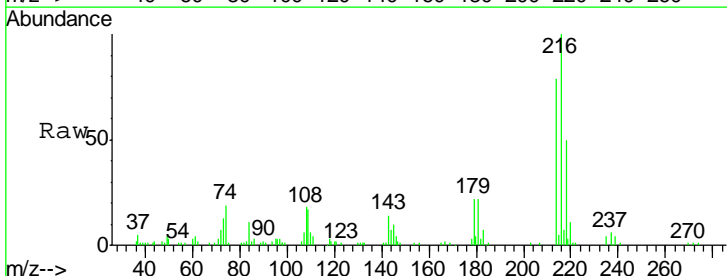
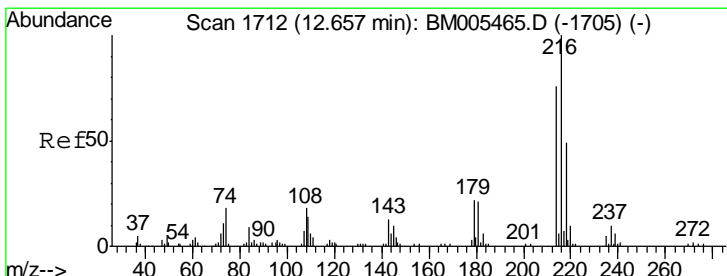
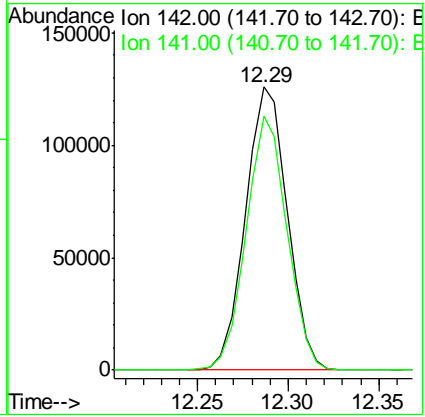




#34
 2-Methylnaphthalene
 Concen: 20.61 ng/ul
 RT: 12.29 min Scan# 1649
 Delta R.T. -0.01 min
 Lab File: BM005500.D
 Acq: 19 May 2016 15:50

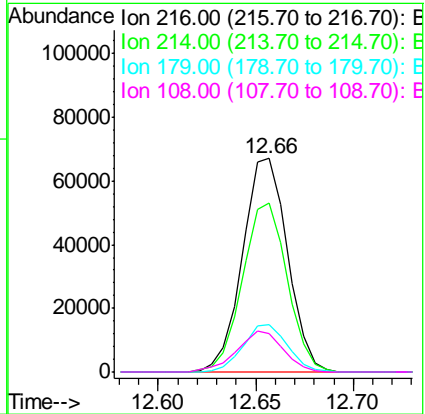
Instrument :
 BNA_M
 ClientSampleID :
 SSTD02047

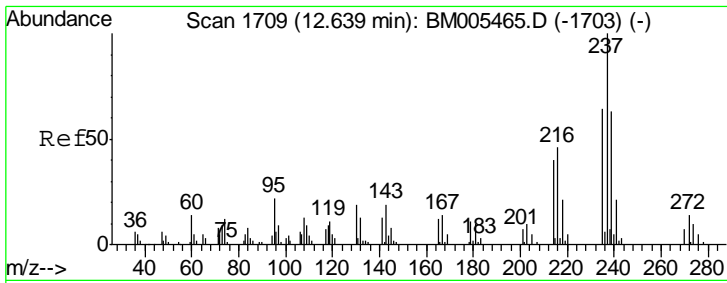
Tgt Ion	Resp	Lower	Upper
142	100		
141	89.8	71.3	106.9



#36
 1,2,4,5-Tetrachlorobenzene
 Concen: 19.63 ng/ul
 RT: 12.66 min Scan# 1712
 Delta R.T. 0.00 min
 Lab File: BM005500.D
 Acq: 19 May 2016 15:50

Tgt Ion	Resp	Lower	Upper
216	100		
214	79.0	63.4	95.0
179	21.9	17.4	26.0
108	17.8	14.9	22.3

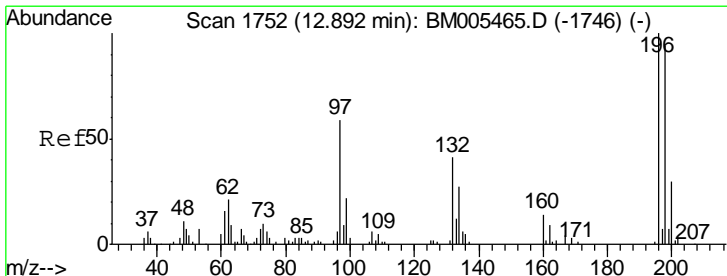
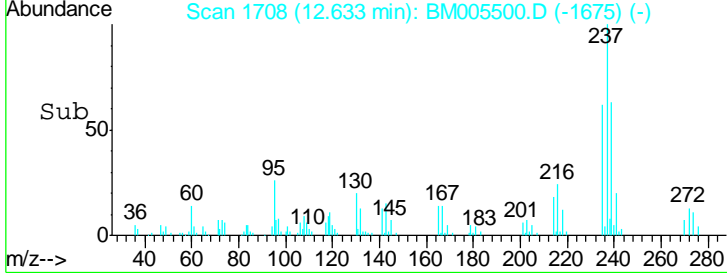
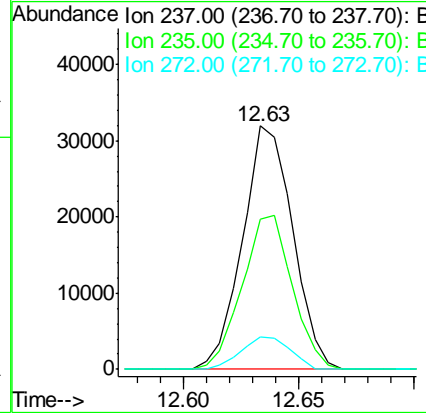
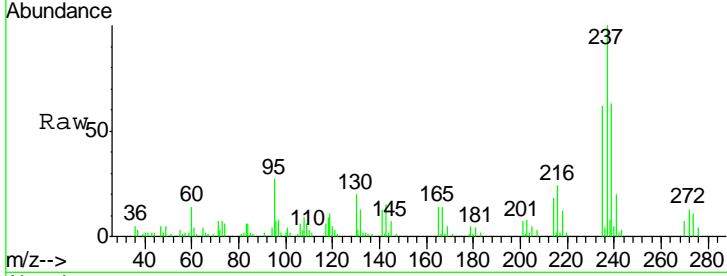




#37
 Hexachlorocyclopentadiene
 Concen: 16.01 ng/ul
 RT: 12.63 min Scan# 1708
 Delta R.T. -0.01 min
 Lab File: BM005500.D
 Acq: 19 May 2016 15:50

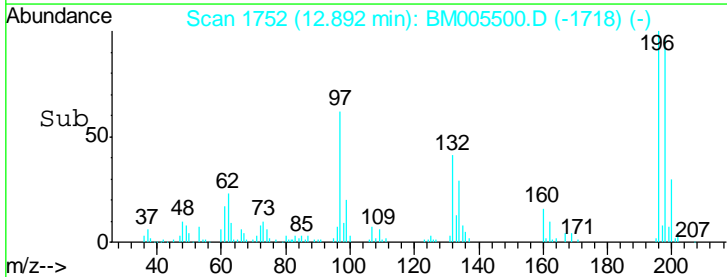
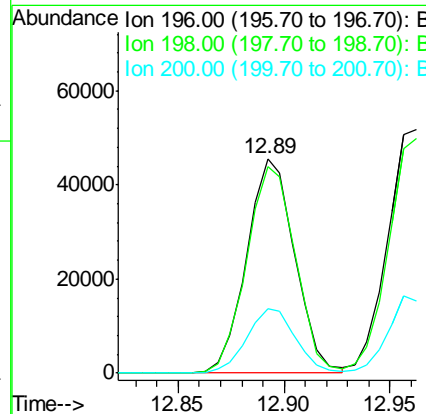
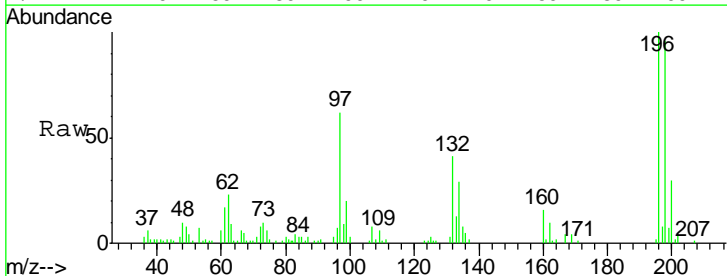
Instrument :
 BNA_M
 ClientSampleID :
 SSTD02047

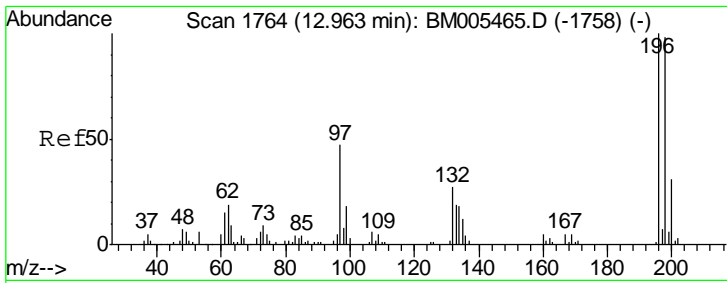
Tgt Ion	Resp	Lower	Upper
237	48554		
235	61.7	53.5	80.3
272	13.3	10.6	15.8



#38
 2,4,6-Trichlorophenol
 Concen: 18.97 ng/ul
 RT: 12.89 min Scan# 1752
 Delta R.T. 0.00 min
 Lab File: BM005500.D
 Acq: 19 May 2016 15:50

Tgt Ion	Resp	Lower	Upper
196	71925		
198	96.3	72.3	108.5
200	30.3	23.9	35.9

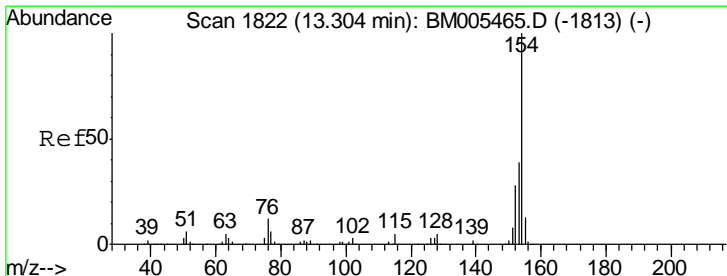
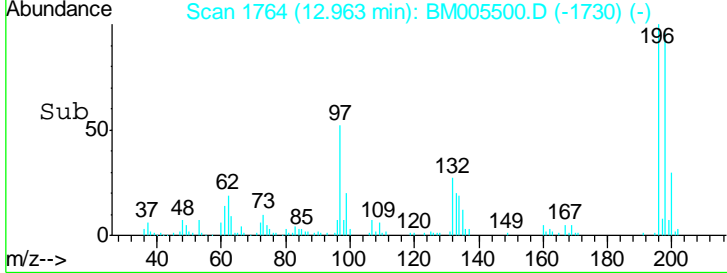
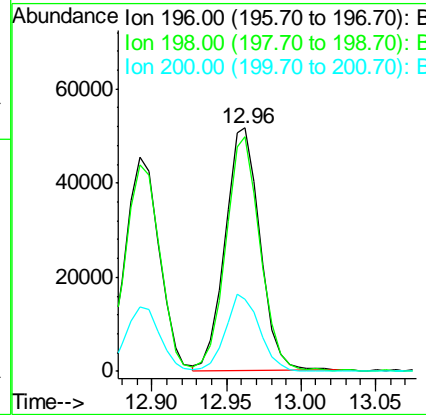
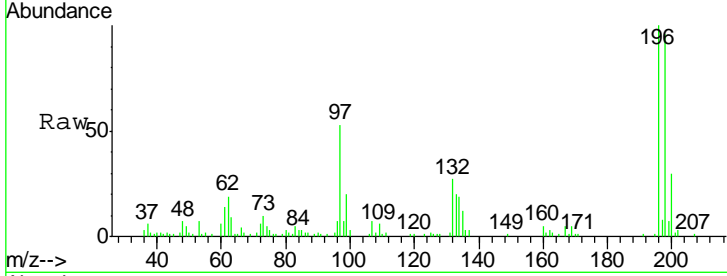




#39
 2,4,5-Trichlorophenol
 Concen: 20.30 ng/ul
 RT: 12.96 min Scan# 1764
 Delta R.T. 0.00 min
 Lab File: BM005500.D
 Acq: 19 May 2016 15:50

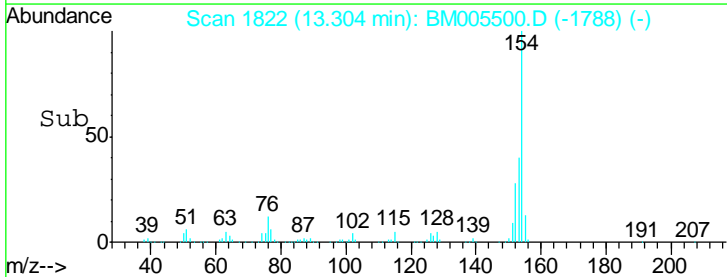
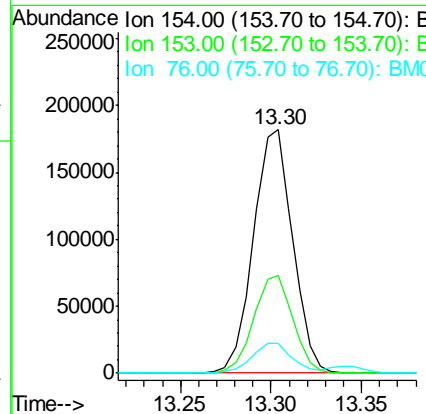
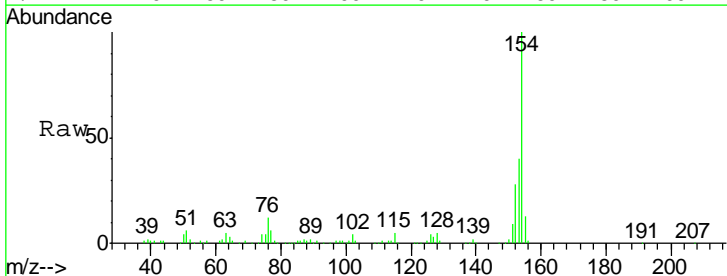
Instrument :
 BNA_M
 ClientSampled :
 SSTD02047

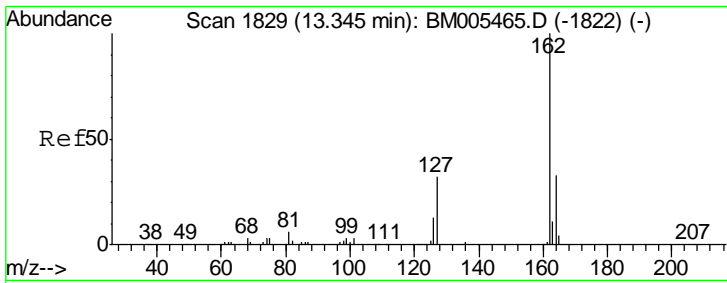
Tgt Ion	Resp	Lower	Upper
196	100		
198	96.2	78.5	117.7
200	29.8	25.4	38.2



#40
 1,1'-Biphenyl
 Concen: 18.95 ng/ul
 RT: 13.30 min Scan# 1822
 Delta R.T. 0.00 min
 Lab File: BM005500.D
 Acq: 19 May 2016 15:50

Tgt Ion	Resp	Lower	Upper
154	100		
153	39.9	32.1	48.1
76	12.3	10.6	15.8

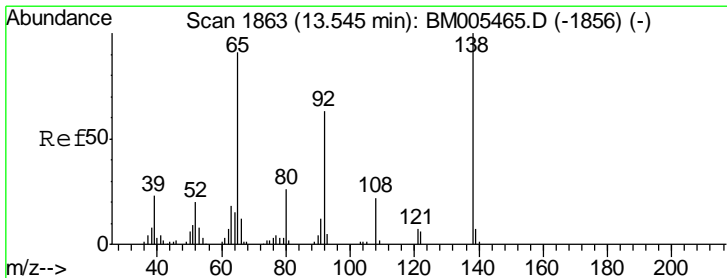
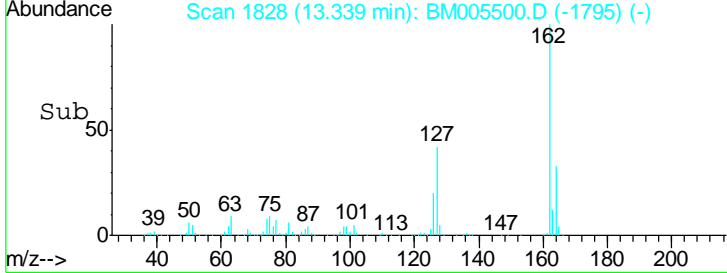
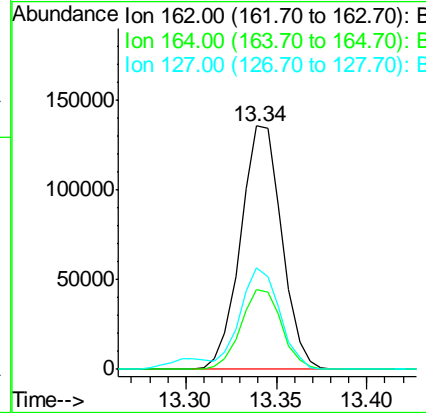
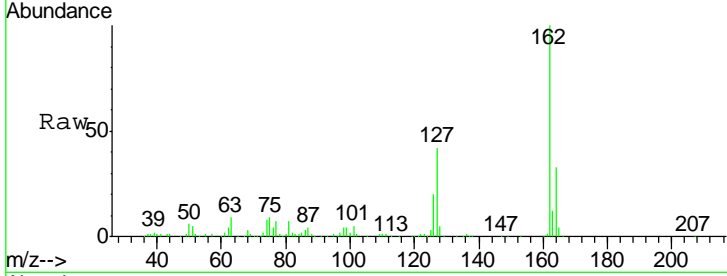




#41
 2-Chloronaphthalene
 Concen: 19.29 ng/ul
 RT: 13.34 min Scan# 1828
 Delta R.T. -0.01 min
 Lab File: BM005500.D
 Acq: 19 May 2016 15:50

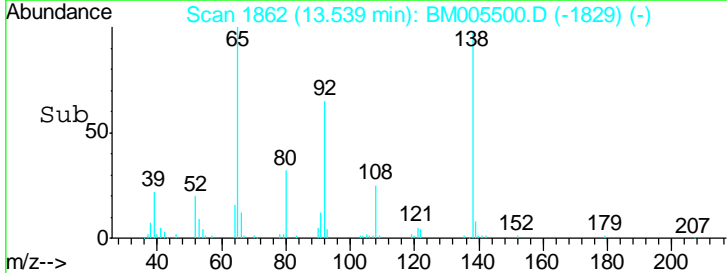
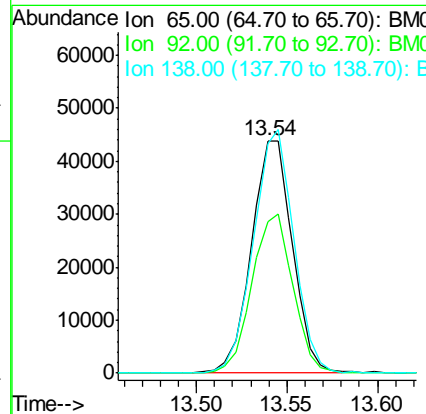
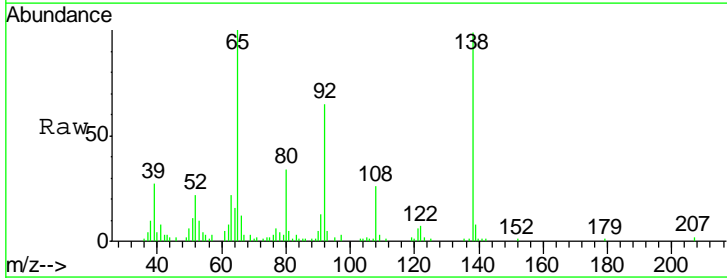
Instrument :
 BNA_M
 ClientSampled :
 SSTD02047

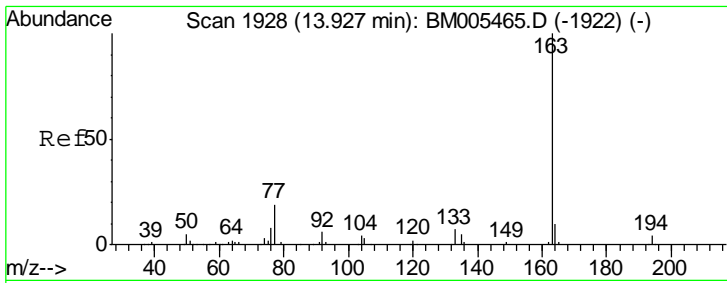
Tgt Ion	Resp	Lower	Upper
162	214233		
164	33.0	25.5	38.3
127	41.9	31.9	47.9



#42
 2-Nitroaniline
 Concen: 19.70 ng/ul
 RT: 13.54 min Scan# 1862
 Delta R.T. -0.01 min
 Lab File: BM005500.D
 Acq: 19 May 2016 15:50

Tgt Ion	Resp	Lower	Upper
65	69006		
92	65.4	60.1	90.1
138	99.1	84.0	126.0

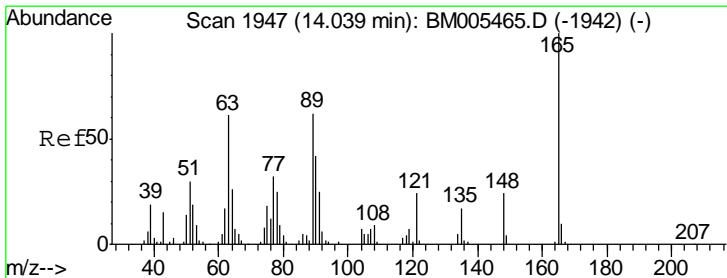
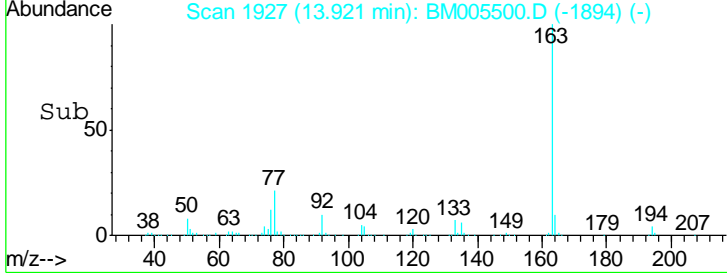
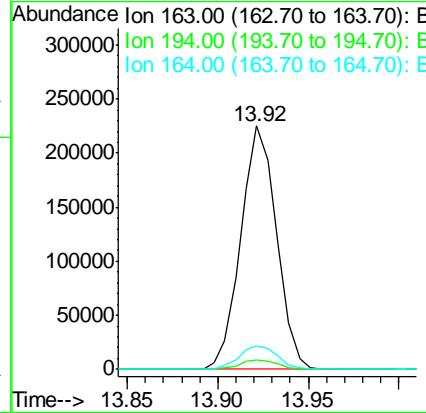
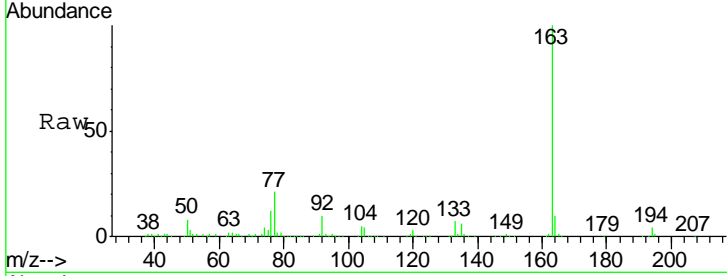




#44
 Dimethylphthalate
 Concen: 20.43 ng/ul
 RT: 13.92 min Scan# 1927
 Delta R.T. -0.01 min
 Lab File: BM005500.D
 Acq: 19 May 2016 15:50

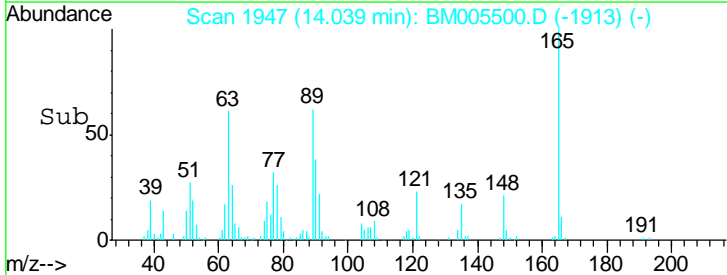
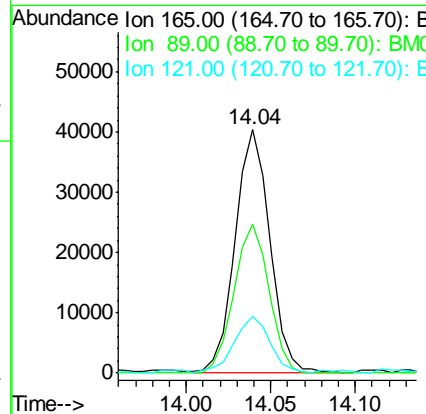
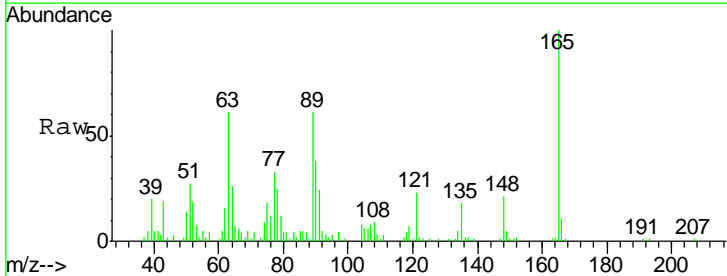
Instrument :
 BNA_M
 ClientSampleID :
 SST02047

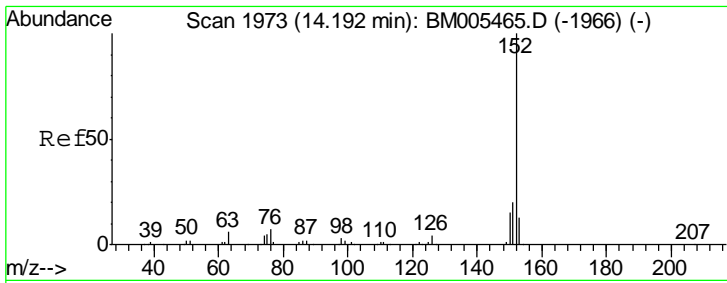
Tgt Ion	Resp	Lower	Upper
163	100		
194	3.9	3.4	5.0
164	9.9	7.9	11.9



#45
 2,6-Dinitrotoluene
 Concen: 19.99 ng/ul
 RT: 14.04 min Scan# 1947
 Delta R.T. 0.00 min
 Lab File: BM005500.D
 Acq: 19 May 2016 15:50

Tgt Ion	Resp	Lower	Upper
165	100		
89	61.3	52.2	78.4
121	23.2	21.0	31.4

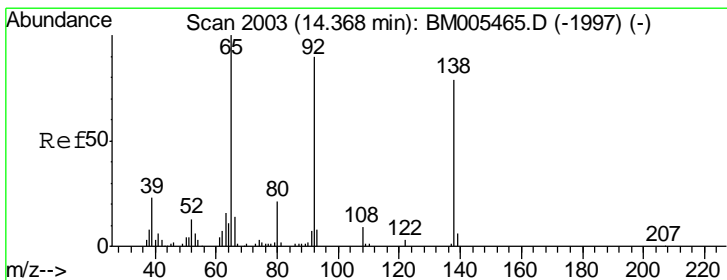
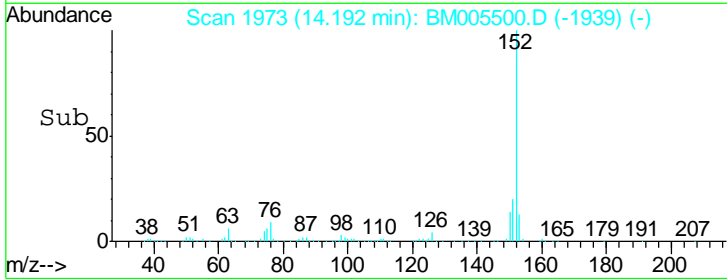
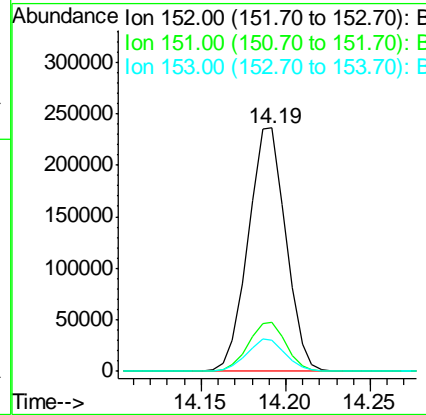
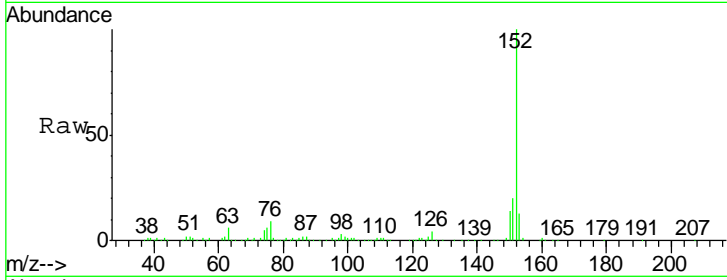




#47
 Acenaphthylene
 Concen: 20.27 ng/ul
 RT: 14.19 min Scan# 1973
 Delta R.T. 0.00 min
 Lab File: BM005500.D
 Acq: 19 May 2016 15:50

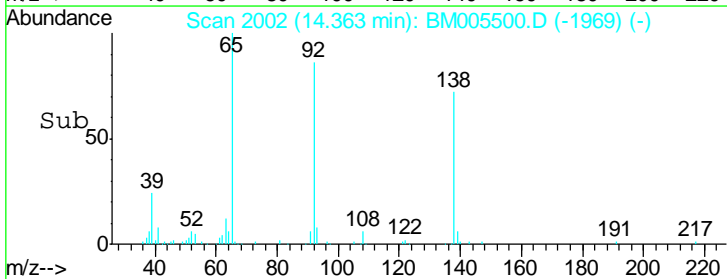
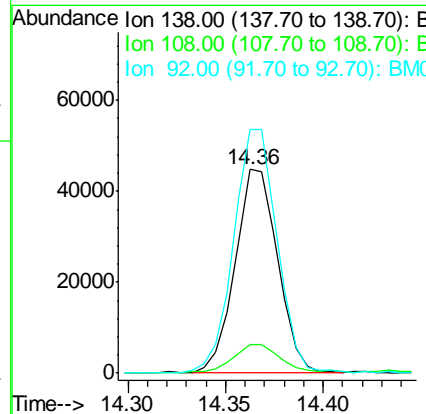
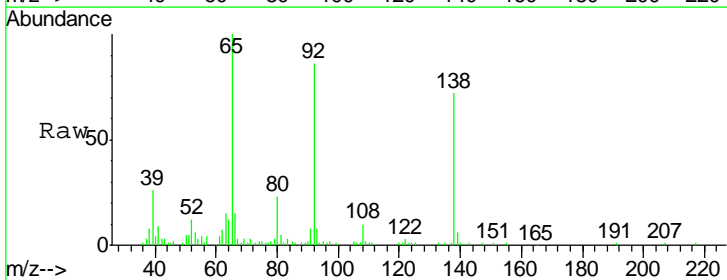
Instrument :
 BNA_M
 ClientSampleId :
 SSTD02047

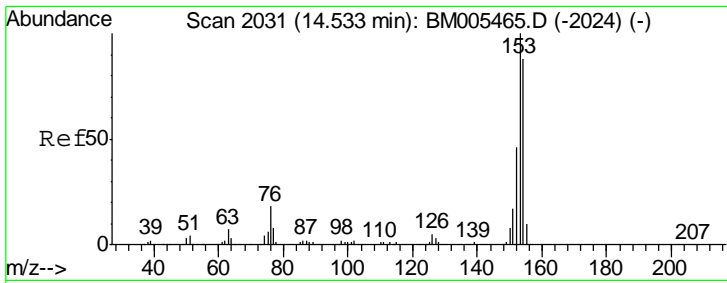
Tgt Ion	Resp	Lower	Upper
152	367279		
151	20.1	16.0	24.0
153	12.6	10.3	15.5



#48
 3-Nitroaniline
 Concen: 21.97 ng/ul
 RT: 14.36 min Scan# 2002
 Delta R.T. -0.01 min
 Lab File: BM005500.D
 Acq: 19 May 2016 15:50

Tgt Ion	Resp	Lower	Upper
138	68121		
108	13.9	8.6	13.0#
92	119.6	93.5	140.3

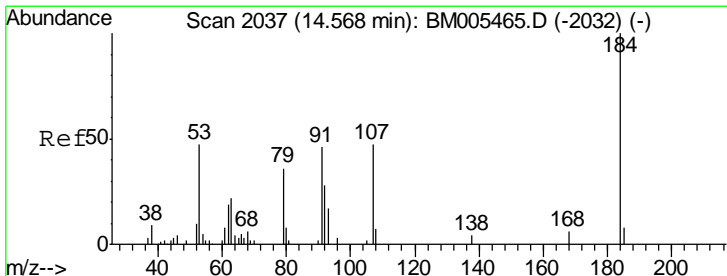
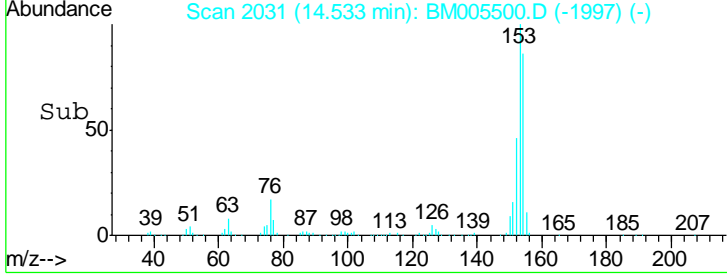
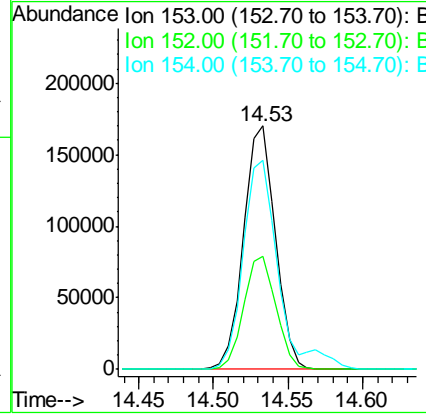
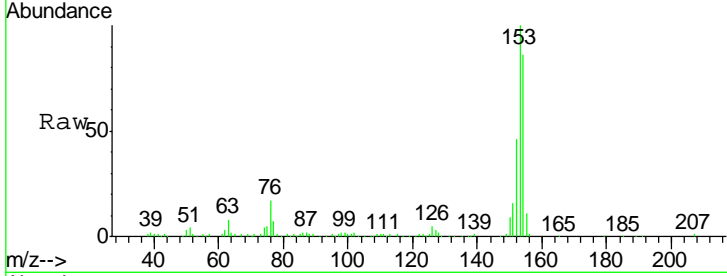




#49
 Acenaphthene
 Concen: 20.29 ng/ul
 RT: 14.53 min Scan# 2031
 Delta R.T. 0.00 min
 Lab File: BM005500.D
 Acq: 19 May 2016 15:50

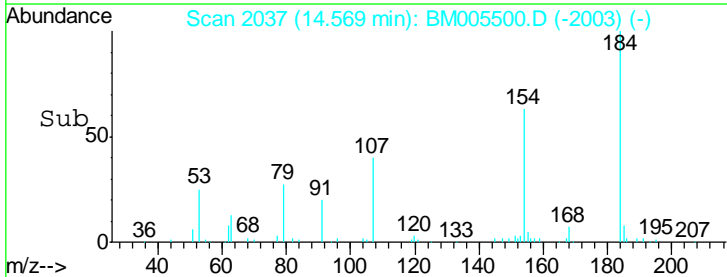
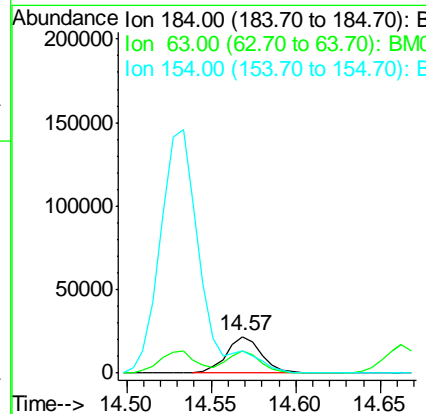
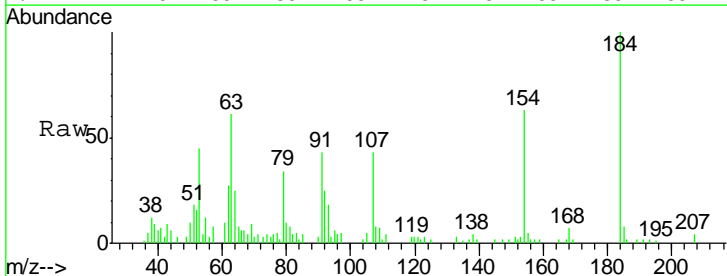
Instrument :
 BNA_M
 ClientSampled :
 SST02047

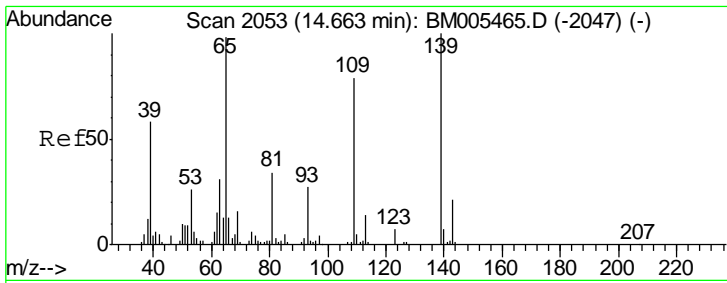
Tgt Ion	Resp	Lower	Upper
153	251149		
152	46.4	38.9	58.3
154	85.7	70.3	105.5



#50
 2,4-Dinitrophenol
 Concen: 18.47 ng/ul
 RT: 14.57 min Scan# 2037
 Delta R.T. 0.00 min
 Lab File: BM005500.D
 Acq: 19 May 2016 15:50

Tgt Ion	Resp	Lower	Upper
184	31305		
63	60.8	56.9	85.3
154	62.6	54.6	82.0

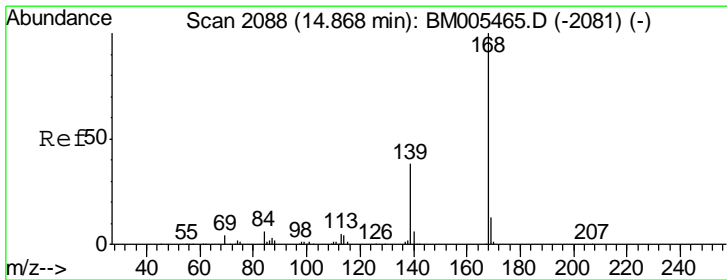
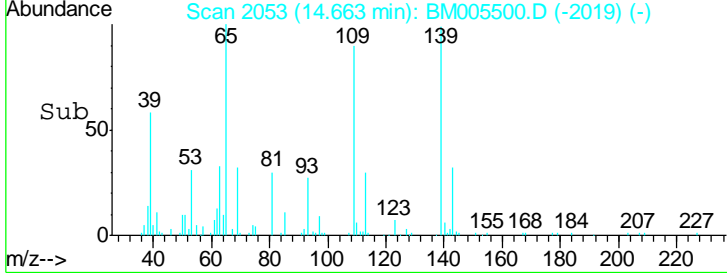
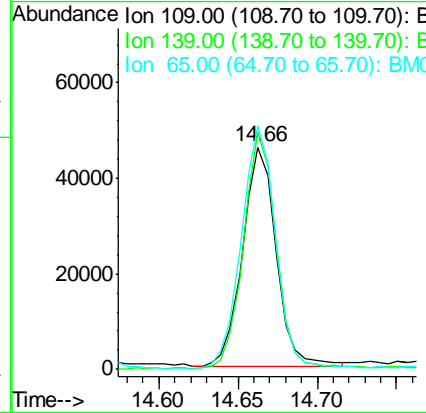
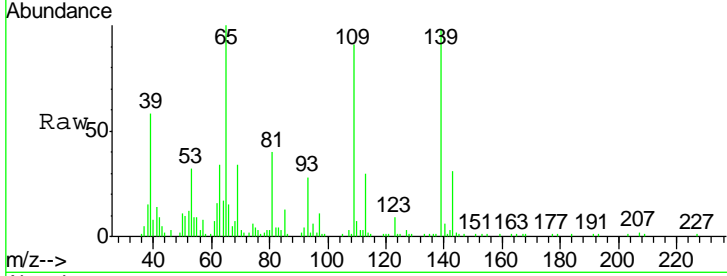




#52
 4-Nitrophenol
 Concen: 24.65 ng/ul
 RT: 14.66 min Scan# 2053
 Delta R.T. 0.00 min
 Lab File: BM005500.D
 Acq: 19 May 2016 15:50

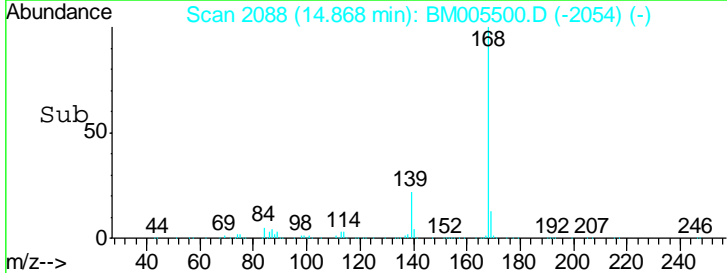
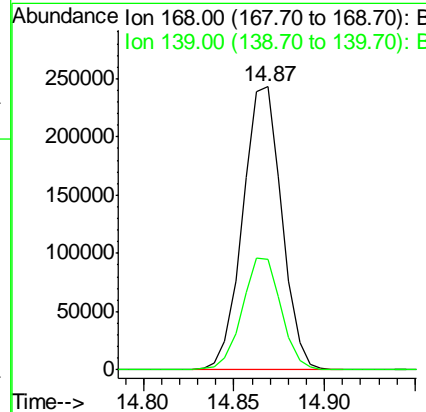
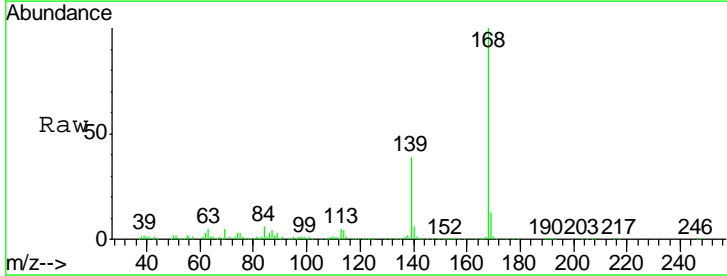
Instrument :
 BNA_M
 ClientSampled :
 SSTD02047

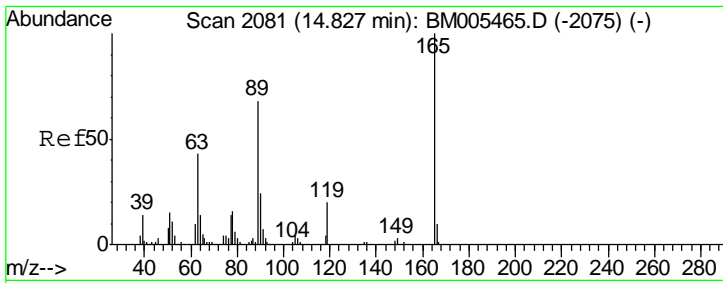
Tgt Ion	Resp	Lower	Upper
109	67072		
109	100		
139	106.9	103.6	155.4
65	109.7	104.7	157.1



#53
 Dibenzofuran
 Concen: 20.08 ng/ul
 RT: 14.87 min Scan# 2088
 Delta R.T. 0.00 min
 Lab File: BM005500.D
 Acq: 19 May 2016 15:50

Tgt Ion	Resp	Lower	Upper
168	362375		
168	100		
139	39.1	30.3	45.5



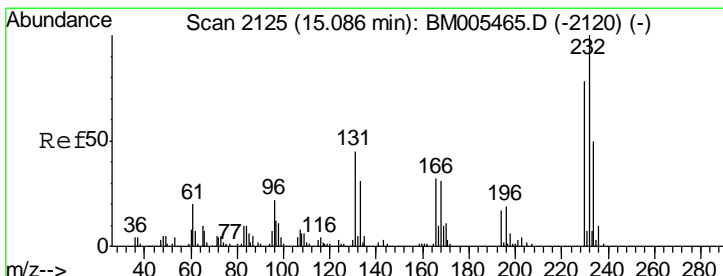
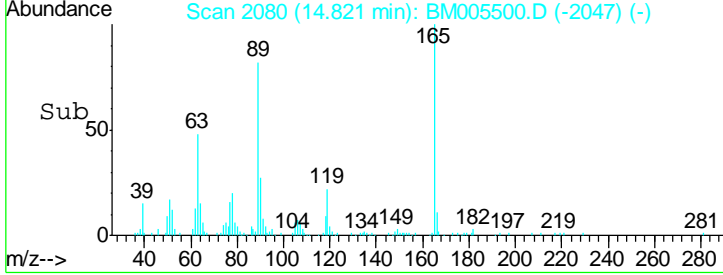
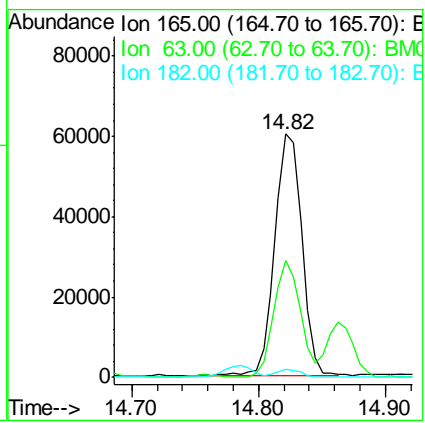
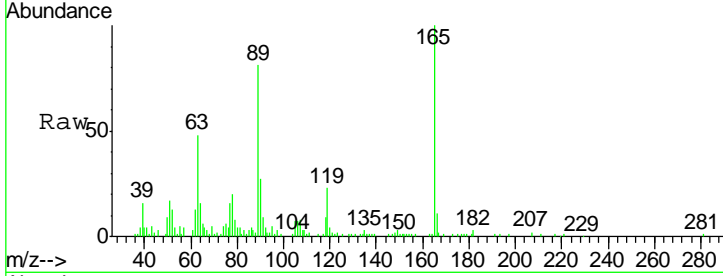


#54
 2,4-Dinitrotoluene
 Concen: 20.31 ng/ul
 RT: 14.82 min Scan# 2080
 Delta R.T. -0.01 min
 Lab File: BM005500.D
 Acq: 19 May 2016 15:50

Instrument :
 BNA_M
ClientSampled :
 SSTD02047

Tgt Ion: 165 Resp: 89631

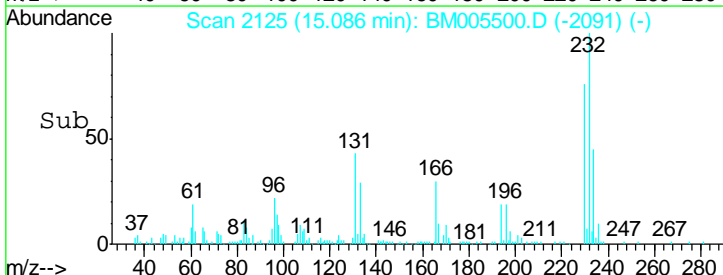
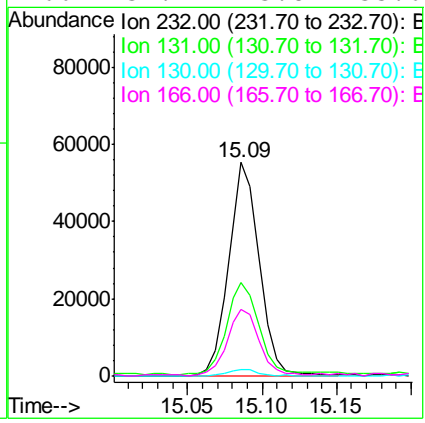
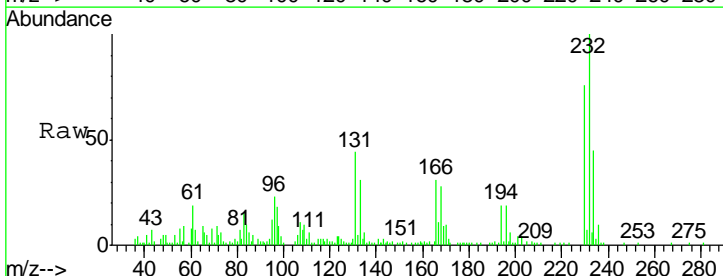
Ion	Ratio	Lower	Upper
165	100		
63	47.9	36.2	54.4
182	3.4	2.5	3.7

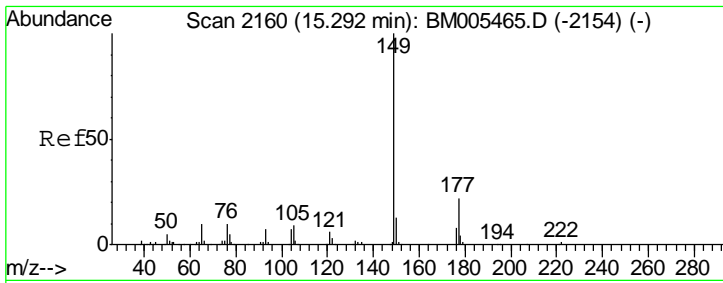


#55
 2,3,4,6-Tetrachlorophenol
 Concen: 20.29 ng/ul
 RT: 15.09 min Scan# 2125
 Delta R.T. 0.00 min
 Lab File: BM005500.D
 Acq: 19 May 2016 15:50

Tgt Ion: 232 Resp: 79704

Ion	Ratio	Lower	Upper
232	100		
131	44.0	35.0	52.6
130	3.1	0.0	0.0#
166	31.2	23.8	35.6

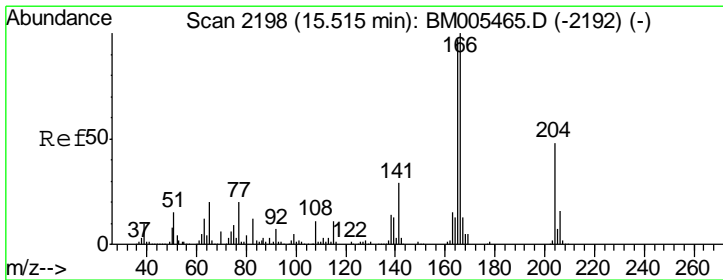
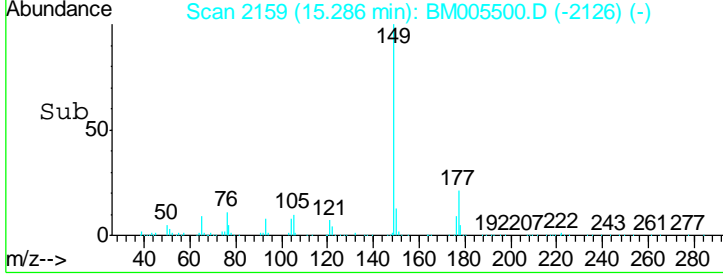
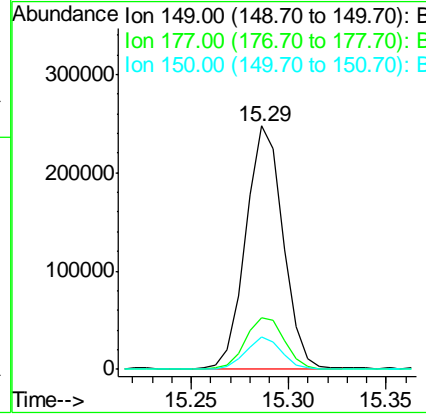
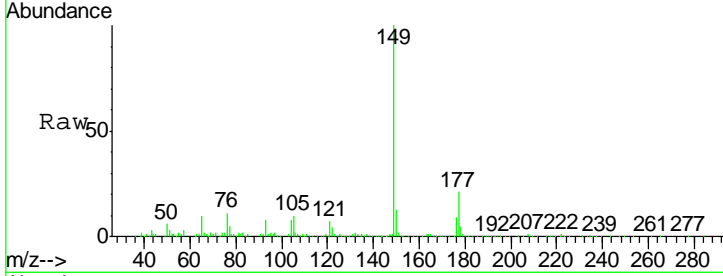




#56
 Diethylphthalate
 Concen: 20.26 ng/ul
 RT: 15.29 min Scan# 2159
 Delta R.T. -0.01 min
 Lab File: BM005500.D
 Acq: 19 May 2016 15:50

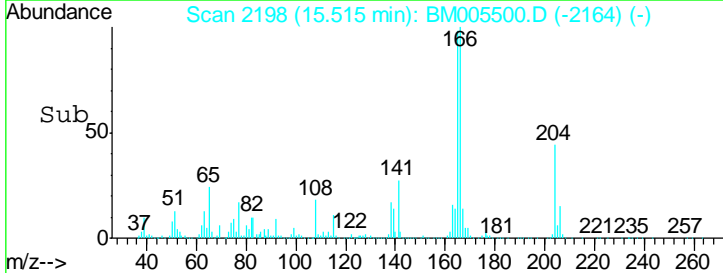
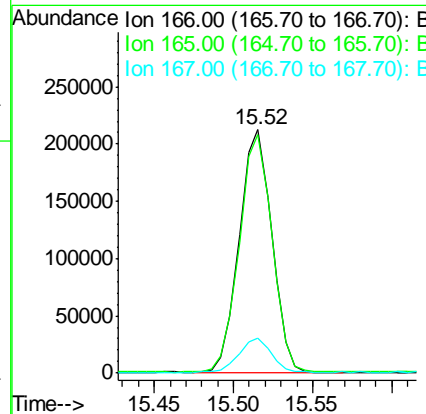
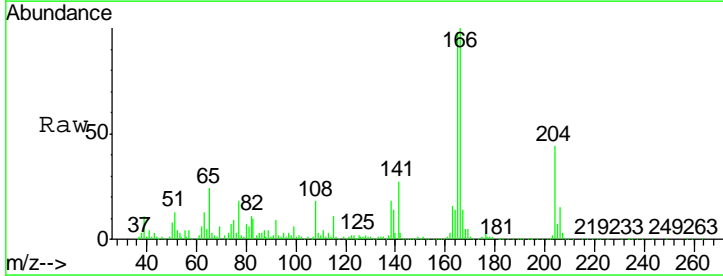
Instrument :
 BNA_M
 ClientSampled :
 SSTD02047

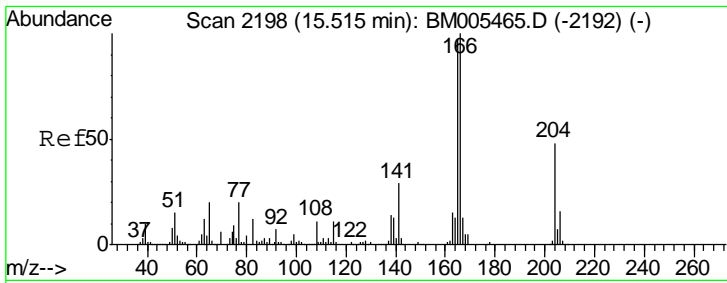
Tgt Ion	Resp	Lower	Upper
149	323912		
177	21.1	17.6	26.4
150	13.2	9.8	14.8



#58
 Fluorene
 Concen: 20.31 ng/ul
 RT: 15.52 min Scan# 2198
 Delta R.T. 0.00 min
 Lab File: BM005500.D
 Acq: 19 May 2016 15:50

Tgt Ion	Resp	Lower	Upper
166	303142		
165	98.2	77.9	116.9
167	14.3	10.6	16.0

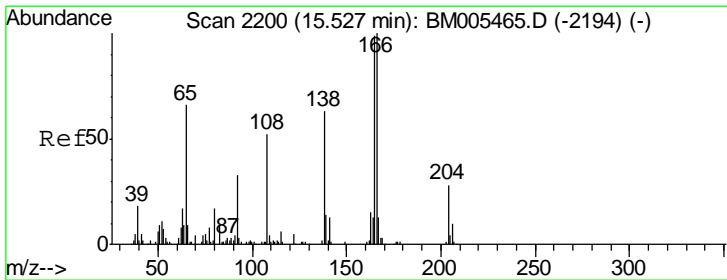
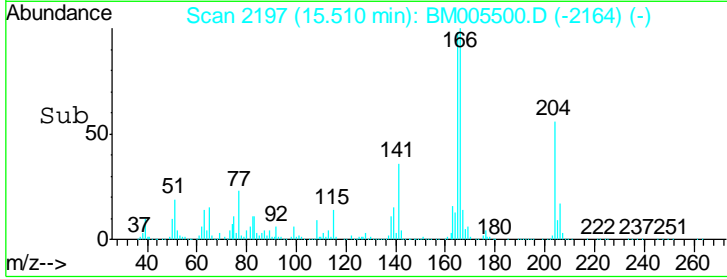
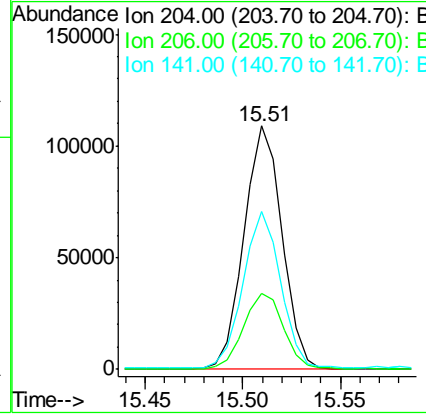
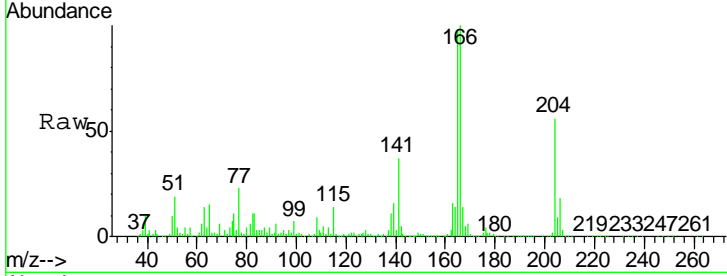




#59
 4-Chlorophenyl-phenylether
 Concen: 20.56 ng/ul
 RT: 15.51 min Scan# 2197
 Delta R.T. -0.01 min
 Lab File: BM005500.D
 Acq: 19 May 2016 15:50

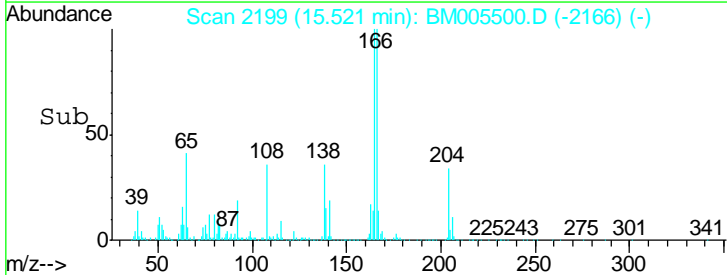
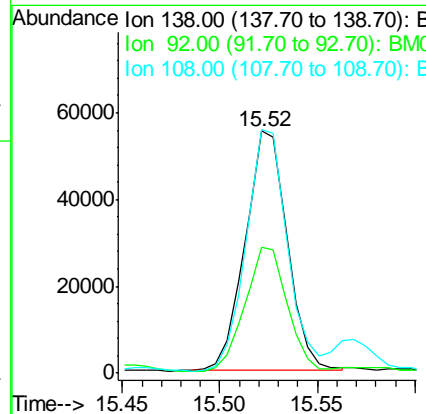
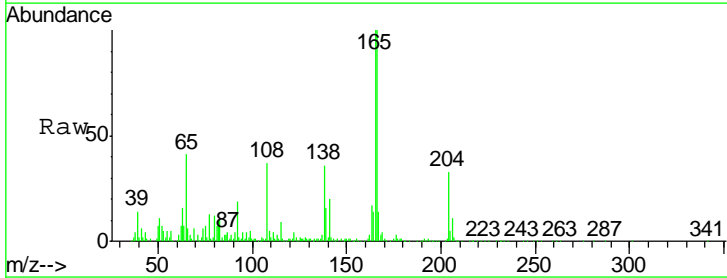
Instrument :
 BNA_M
 ClientSampled :
 SSTD02047

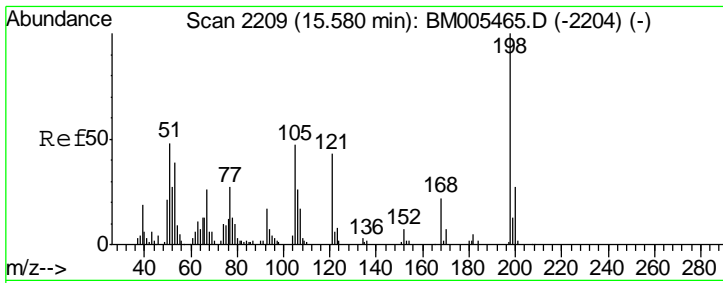
Tgt Ion	Resp	Lower	Upper
204	147649		
204	100		
206	31.1	25.8	38.6
141	64.8	48.9	73.3



#60
 4-Nitroaniline
 Concen: 22.65 ng/ul
 RT: 15.52 min Scan# 2199
 Delta R.T. -0.01 min
 Lab File: BM005500.D
 Acq: 19 May 2016 15:50

Tgt Ion	Resp	Lower	Upper
138	82306		
138	100		
92	52.2	44.3	66.5
108	100.6	66.3	99.5#

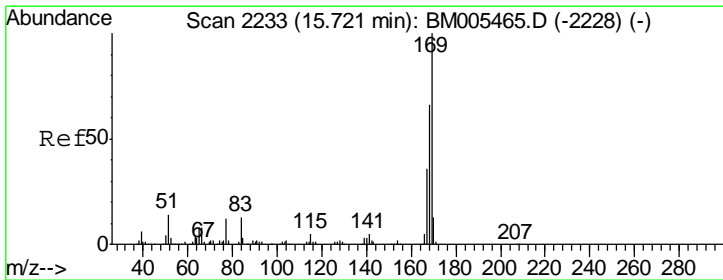
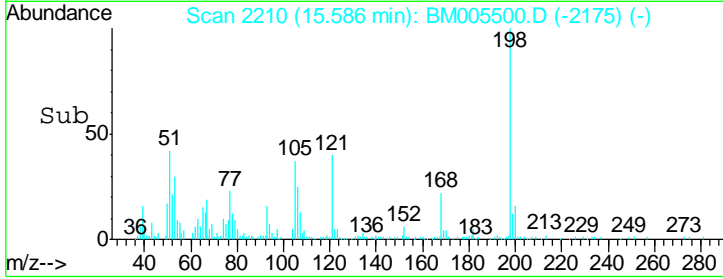
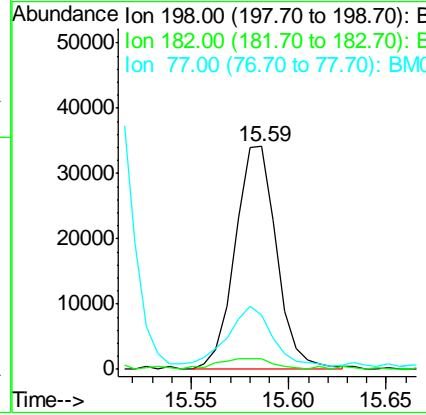
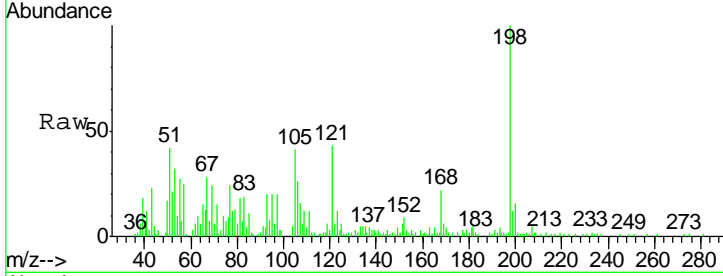




#63
 4,6-Dinitro-2-methylphenol
 Concen: 18.83 ng/ul
 RT: 15.59 min Scan# 2210
 Delta R.T. 0.01 min
 Lab File: BM005500.D
 Acq: 19 May 2016 15:50

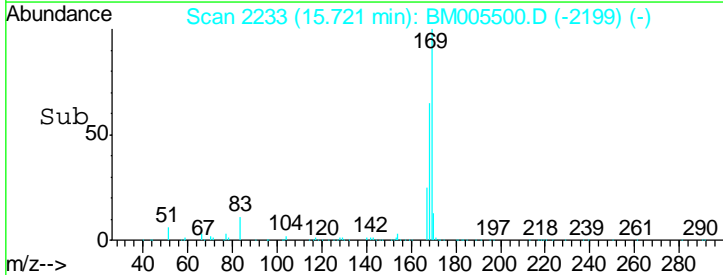
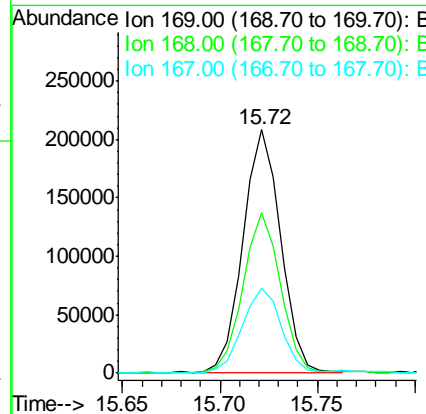
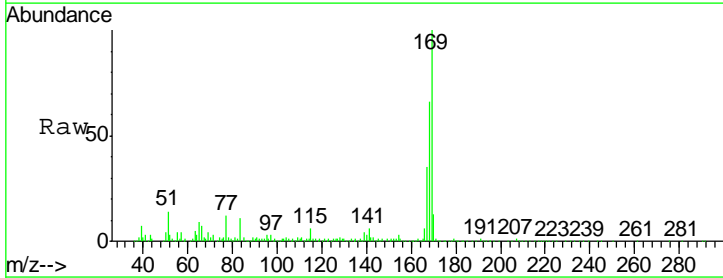
Instrument :
 BNA_M
 ClientSampled :
 SSTD02047

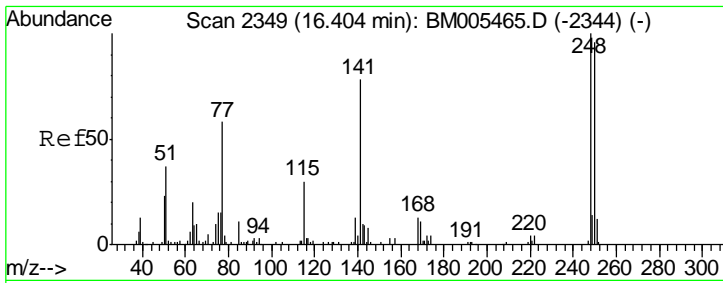
Tgt Ion	Resp	Lower	Upper
198	50422		
182	4.7	5.5	8.3#
77	24.4	24.2	36.2



#64
 N-Nitrosodiphenylamine
 Concen: 20.82 ng/ul
 RT: 15.72 min Scan# 2233
 Delta R.T. 0.00 min
 Lab File: BM005500.D
 Acq: 19 May 2016 15:50

Tgt Ion	Resp	Lower	Upper
169	275280		
168	65.8	52.9	79.3
167	34.7	28.2	42.4

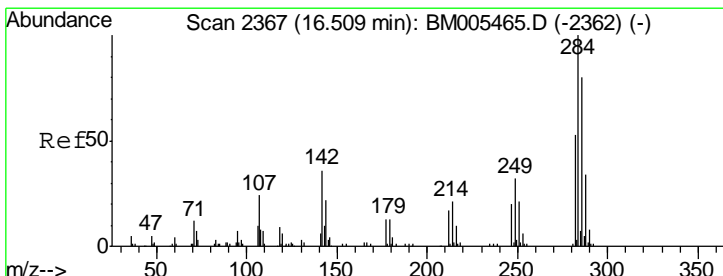
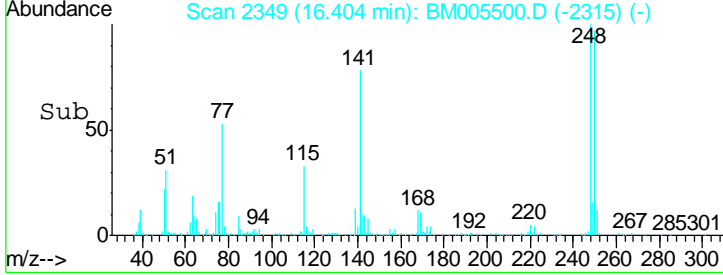
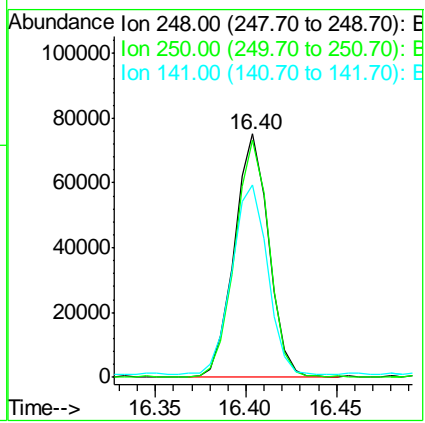
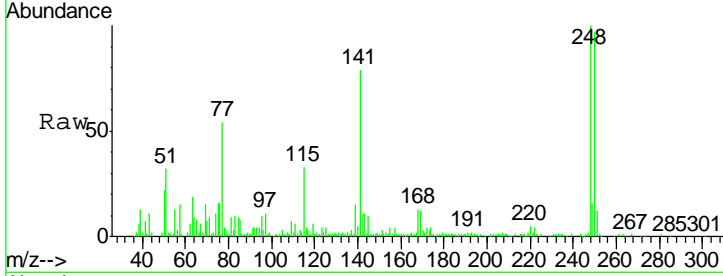




#65
 4-Bromophenyl-phenylether
 Concen: 21.08 ng/ul
 RT: 16.40 min Scan# 2349
 Delta R.T. 0.00 min
 Lab File: BM005500.D
 Acq: 19 May 2016 15:50

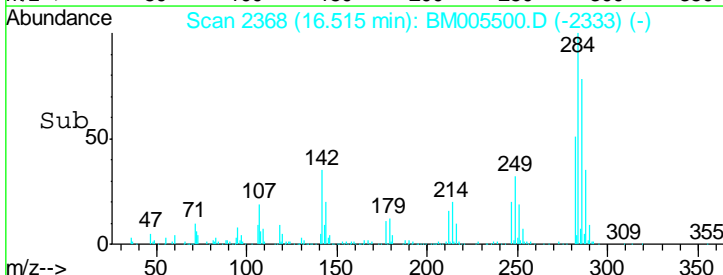
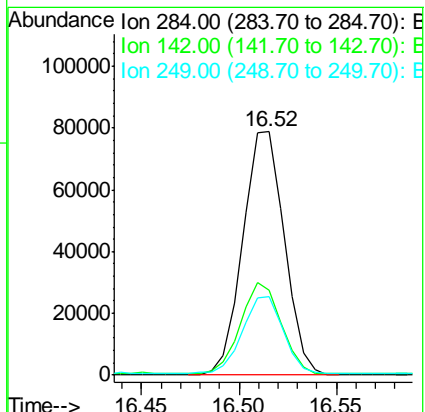
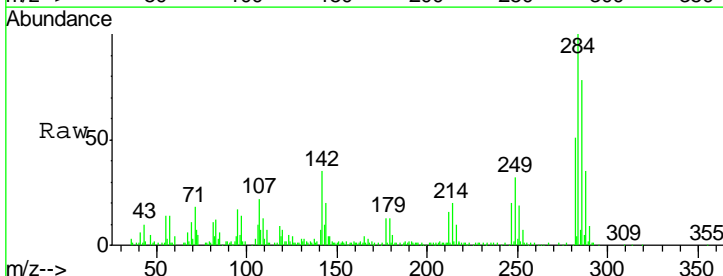
Instrument : BNA_M
 ClientSampled : SST02047

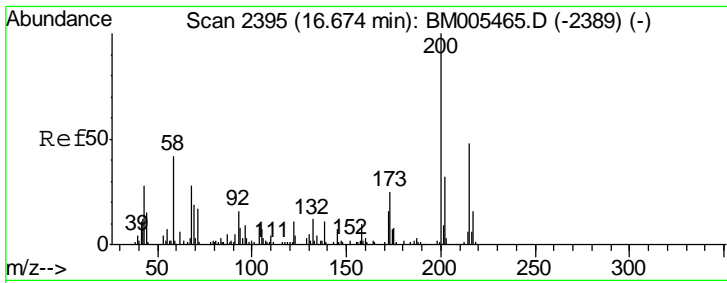
Tgt Ion:248	Resp:	99272
Ion Ratio	Lower	Upper
248	100	
250	97.4	78.4 117.6
141	79.1	67.0 100.4



#66
 Hexachlorobenzene
 Concen: 21.28 ng/ul
 RT: 16.52 min Scan# 2368
 Delta R.T. 0.01 min
 Lab File: BM005500.D
 Acq: 19 May 2016 15:50

Tgt Ion:284	Resp:	116549
Ion Ratio	Lower	Upper
284	100	
142	34.8	31.0 46.6
249	32.4	26.9 40.3

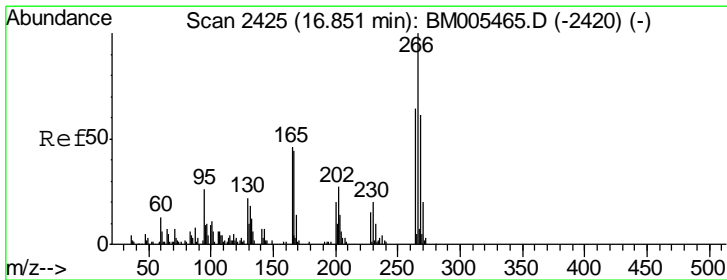
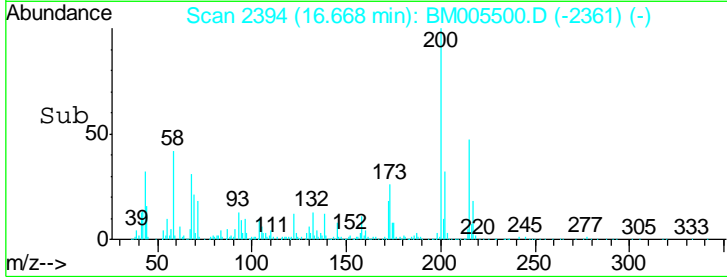
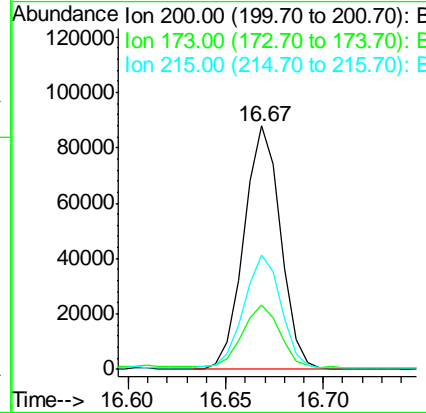
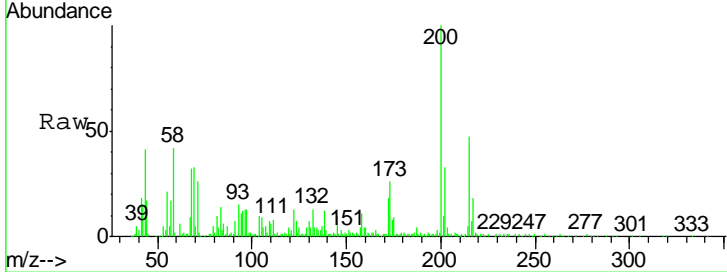




#67
 Atrazine
 Concen: 24.17 ng/ul
 RT: 16.67 min Scan# 2394
 Delta R.T. -0.01 min
 Lab File: BM005500.D
 Acq: 19 May 2016 15:50

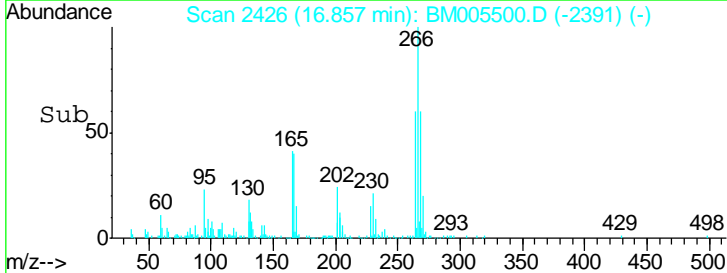
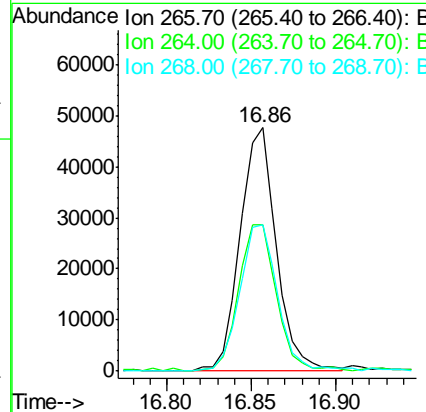
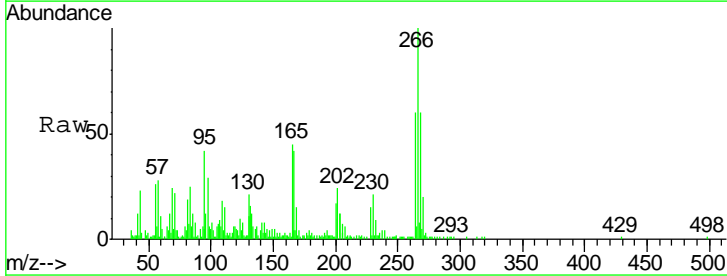
Instrument :
 BNA_M
 ClientSampleId :
 SSTD02047

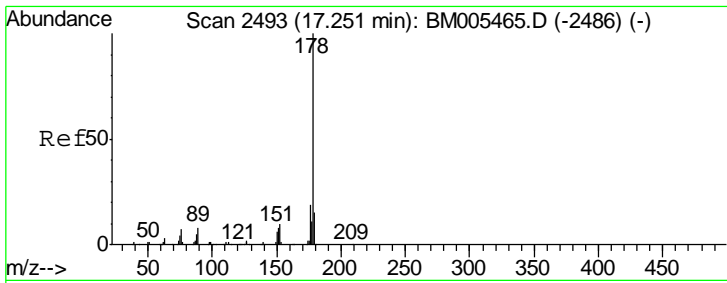
Tgt Ion	Resp	Lower	Upper
200	114448		
173	26.5	21.0	31.4
215	47.0	37.4	56.2



#68
 Pentachlorophenol
 Concen: 20.12 ng/ul
 RT: 16.86 min Scan# 2426
 Delta R.T. 0.01 min
 Lab File: BM005500.D
 Acq: 19 May 2016 15:50

Tgt Ion	Resp	Lower	Upper
266	71024		
264	60.0	52.0	78.0
268	60.1	53.0	79.6

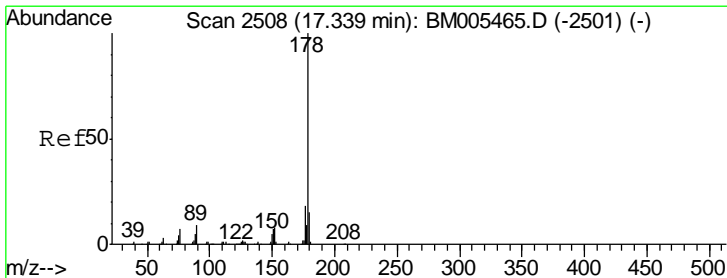
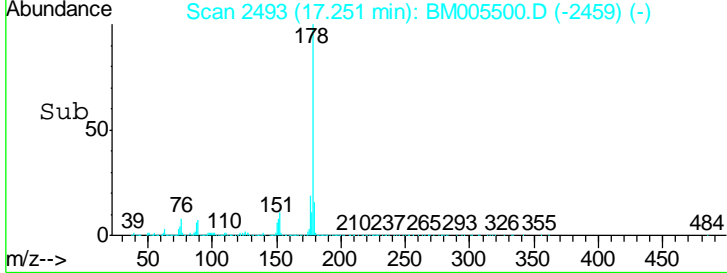
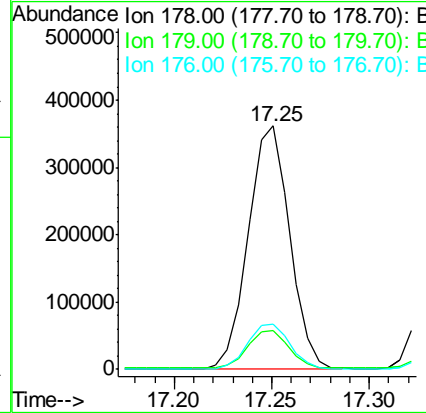
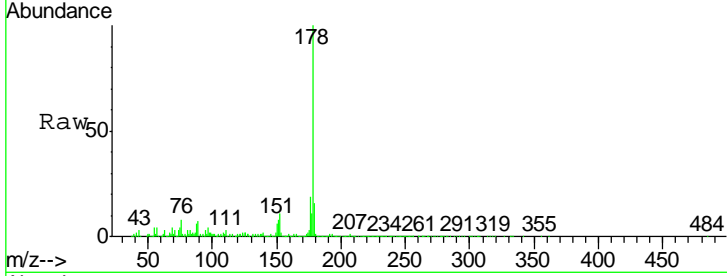




#69
 Phenanthrene
 Concen: 19.95 ng/ul
 RT: 17.25 min Scan# 2493
 Delta R.T. 0.00 min
 Lab File: BM005500.D
 Acq: 19 May 2016 15:50

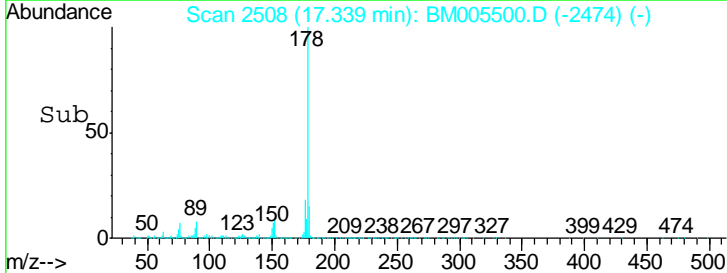
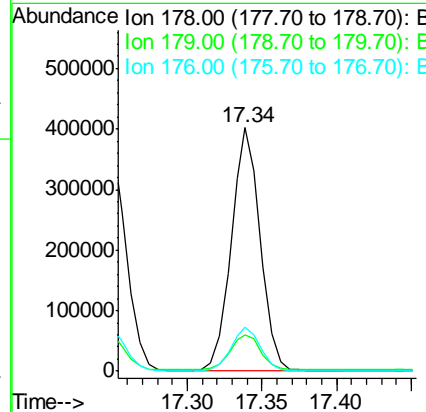
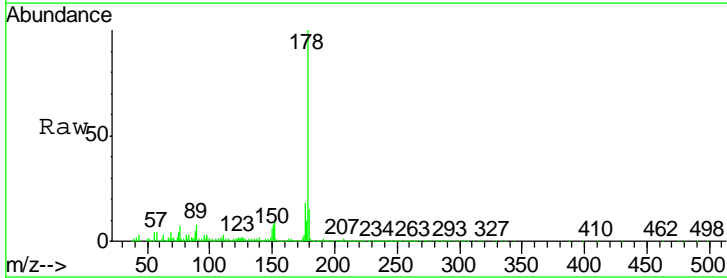
Instrument :
 BNA_M
 ClientSampled :
 SSTD02047

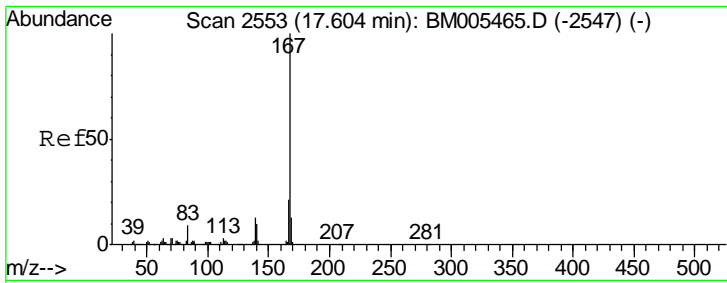
Tgt Ion	Resp	Lower	Upper
178	100		
179	16.0	12.3	18.5
176	18.7	15.2	22.8



#71
 Anthracene
 Concen: 20.64 ng/ul
 RT: 17.34 min Scan# 2508
 Delta R.T. 0.00 min
 Lab File: BM005500.D
 Acq: 19 May 2016 15:50

Tgt Ion	Resp	Lower	Upper
178	100		
179	15.0	12.4	18.6
176	17.8	15.1	22.7

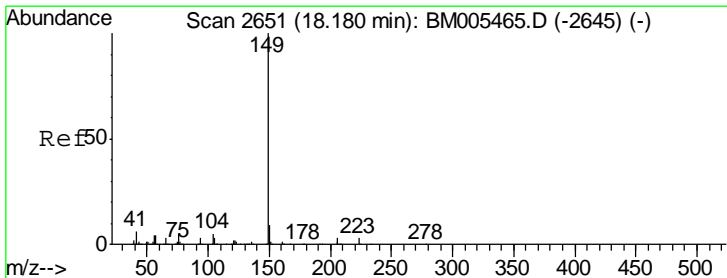
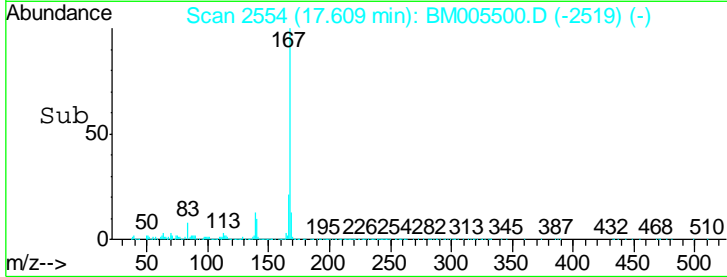
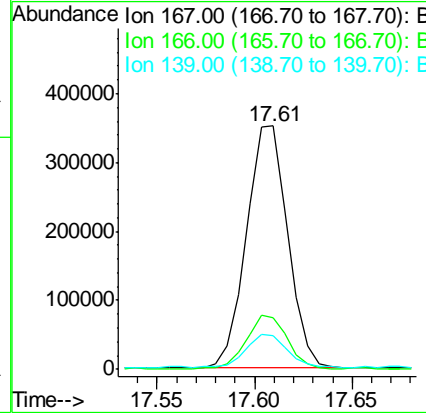
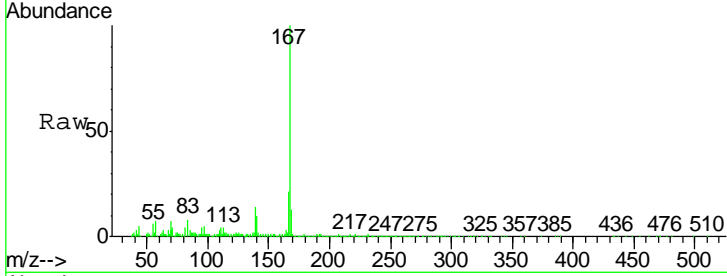




#72
 Carbazole
 Concen: 21.73 ng/ul
 RT: 17.61 min Scan# 2554
 Delta R.T. 0.01 min
 Lab File: BM005500.D
 Acq: 19 May 2016 15:50

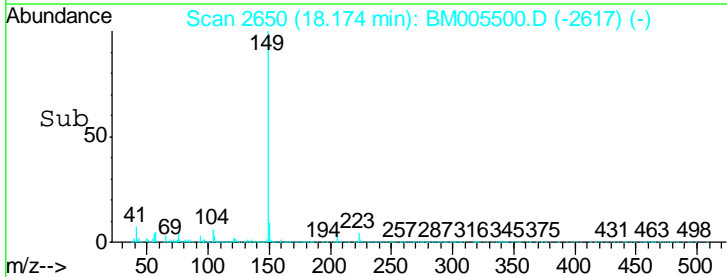
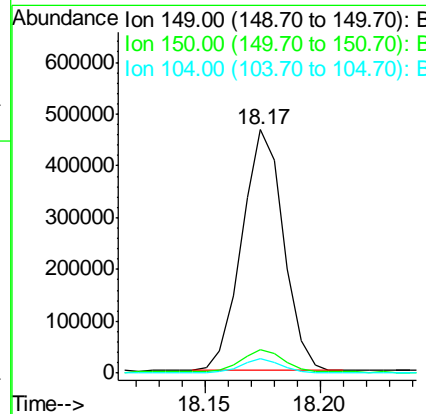
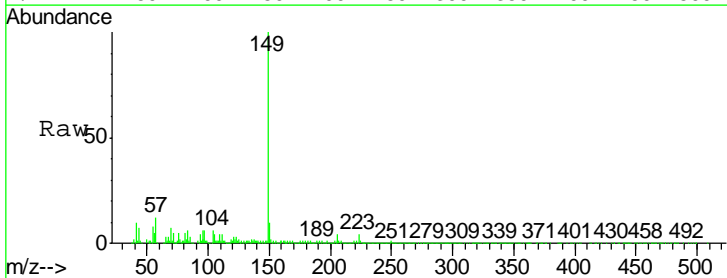
Instrument :
 BNA_M
 ClientSampleId :
 SST02047

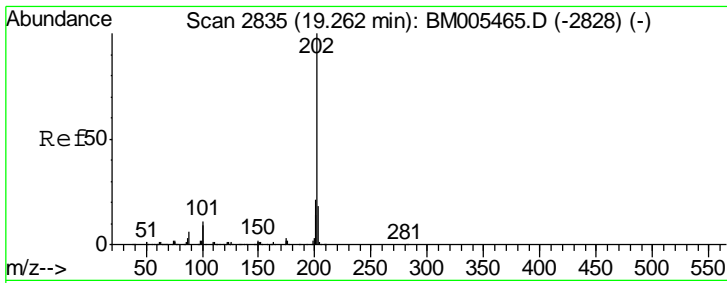
Tgt Ion	Resp	Lower	Upper
167	100		
166	21.3	17.1	25.7
139	13.9	10.2	15.2



#73
 Di-n-butylphthalate
 Concen: 19.84 ng/ul
 RT: 18.17 min Scan# 2650
 Delta R.T. -0.01 min
 Lab File: BM005500.D
 Acq: 19 May 2016 15:50

Tgt Ion	Resp	Lower	Upper
149	100		
150	9.6	7.3	10.9
104	5.7	4.1	6.1

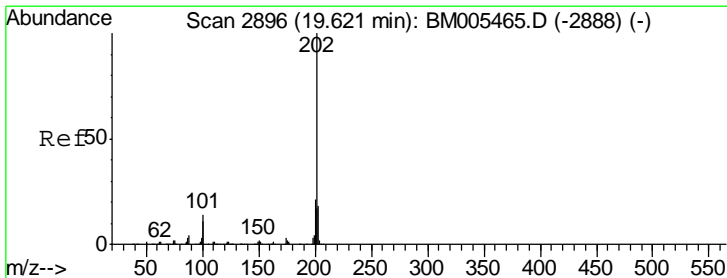
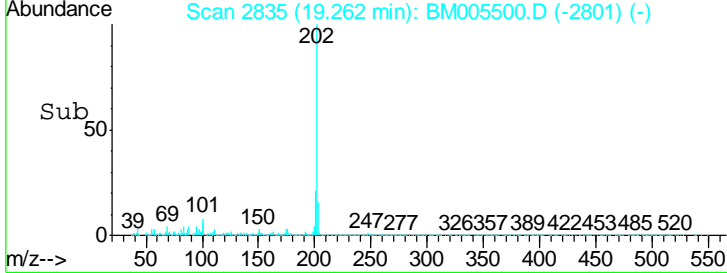
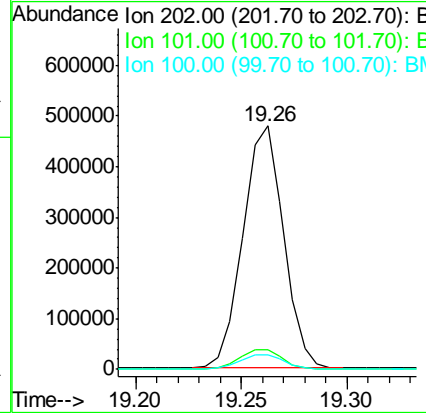
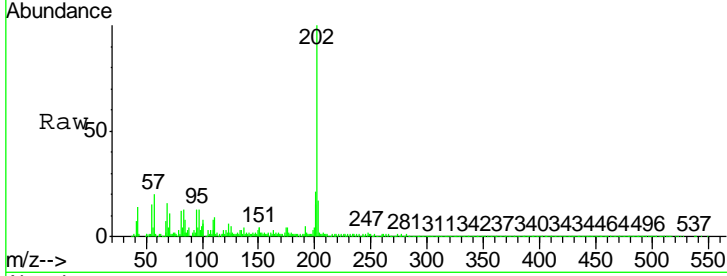




#74
 Fluoranthene
 Concen: 20.51 ng/ul
 RT: 19.26 min Scan# 2835
 Delta R.T. 0.00 min
 Lab File: BM005500.D
 Acq: 19 May 2016 15:50

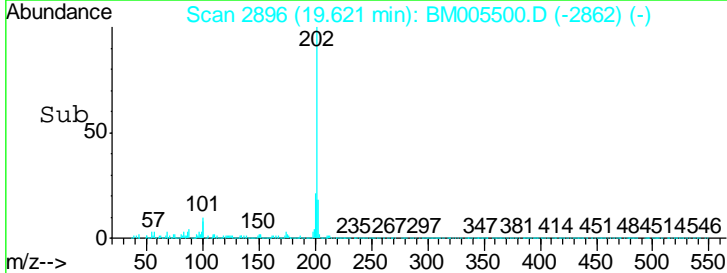
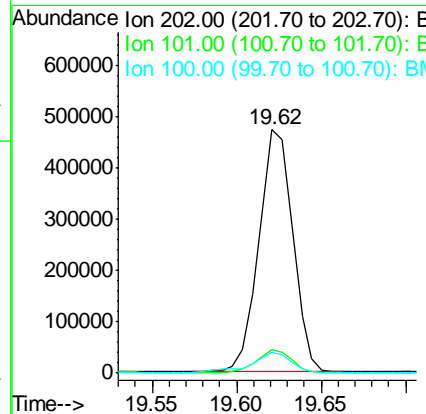
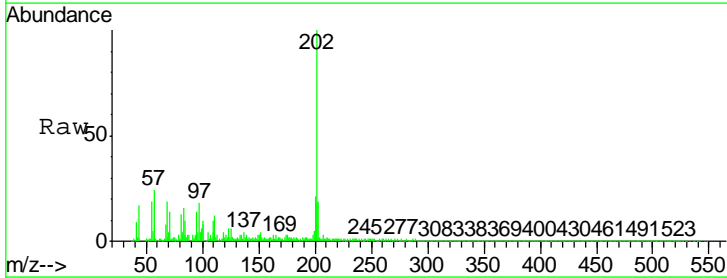
Instrument :
 BNA_M
 ClientSampled :
 SST02047

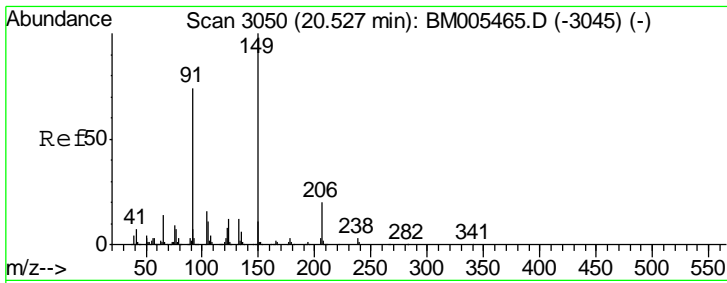
Tgt Ion	Resp	Lower	Upper
202	100		
101	8.1	9.2	13.8#
100	6.1	7.1	10.7#



#77
 Pyrene
 Concen: 19.31 ng/ul
 RT: 19.62 min Scan# 2896
 Delta R.T. 0.00 min
 Lab File: BM005500.D
 Acq: 19 May 2016 15:50

Tgt Ion	Resp	Lower	Upper
202	100		
101	9.8	10.8	16.2#
100	8.5	8.4	12.6

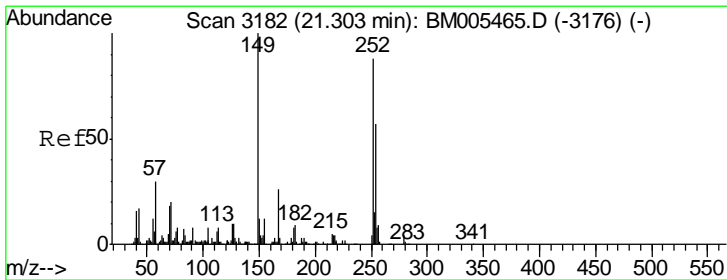
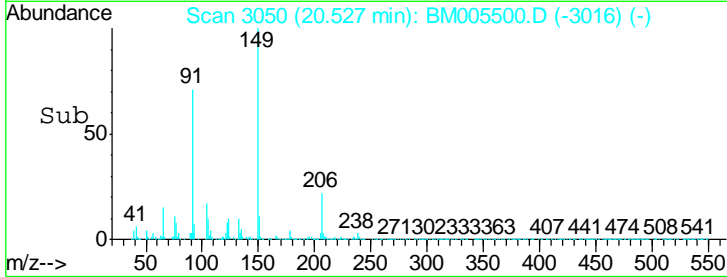
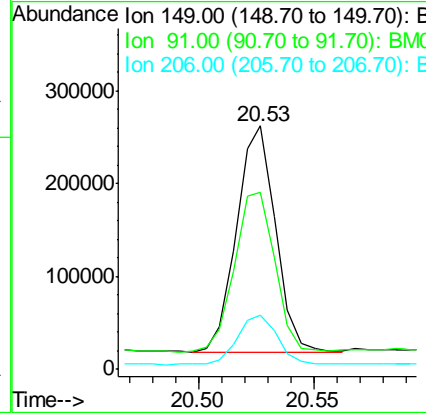
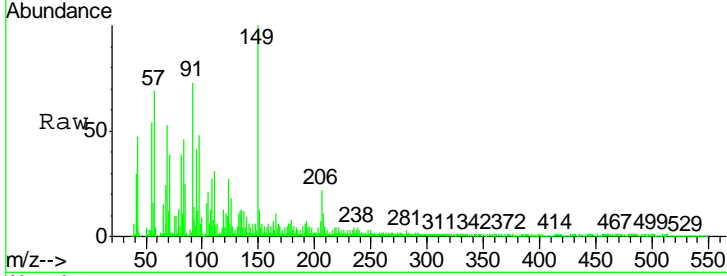




#78
 Butylbenzylphthalate
 Concen: 19.63 ng/ul
 RT: 20.53 min Scan# 3050
 Delta R.T. 0.00 min
 Lab File: BM005500.D
 Acq: 19 May 2016 15:50

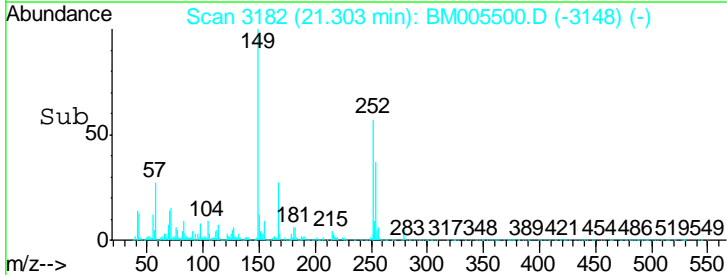
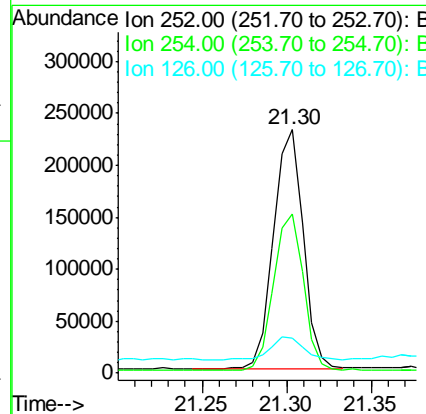
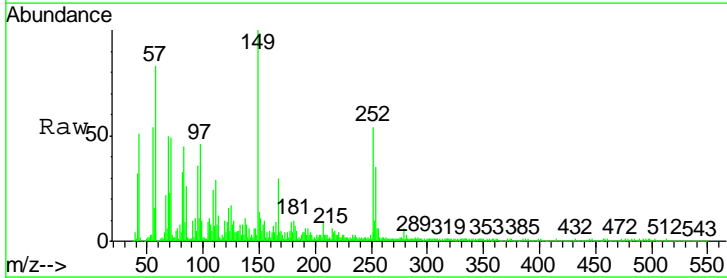
Instrument :
 BNA_M
 Client Sampled :
 SSTD02047

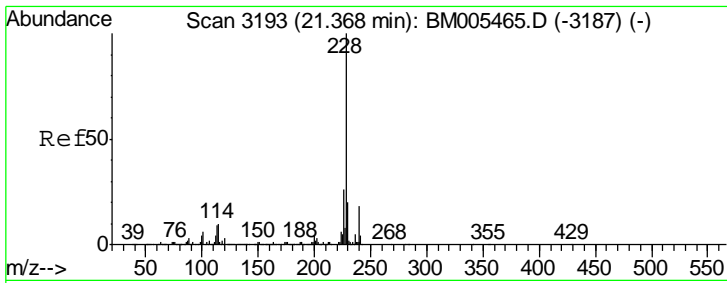
Tgt Ion	Resp	Lower	Upper
149	100		
91	72.8	58.4	87.6
206	22.1	17.3	25.9



#79
 3,3'-Dichlorobenzidine
 Concen: 22.88 ng/ul
 RT: 21.30 min Scan# 3182
 Delta R.T. 0.00 min
 Lab File: BM005500.D
 Acq: 19 May 2016 15:50

Tgt Ion	Resp	Lower	Upper
252	100		
254	65.2	52.1	78.1
126	14.4	9.8	14.8

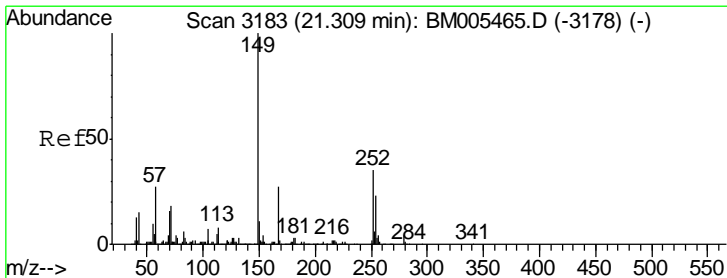
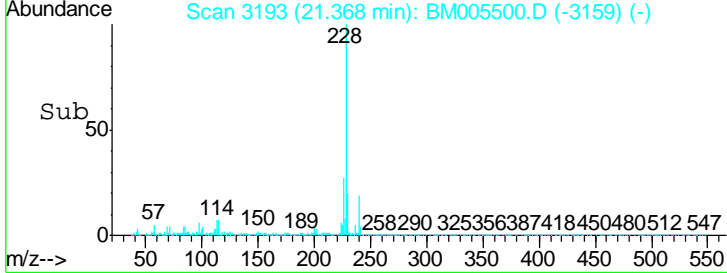
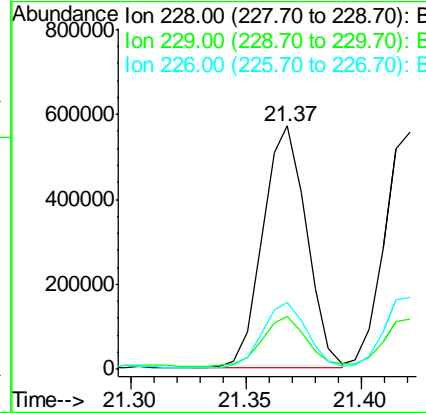
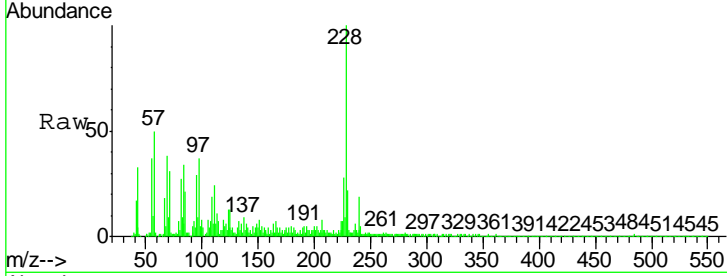




#80
 Benzo(a)anthracene
 Concen: 19.85 ng/ul
 RT: 21.37 min Scan# 3193
 Delta R.T. 0.00 min
 Lab File: BM005500.D
 Acq: 19 May 2016 15:50

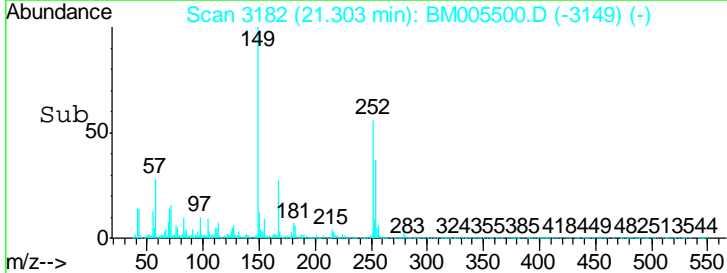
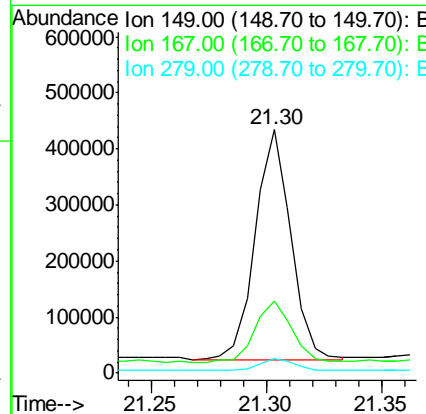
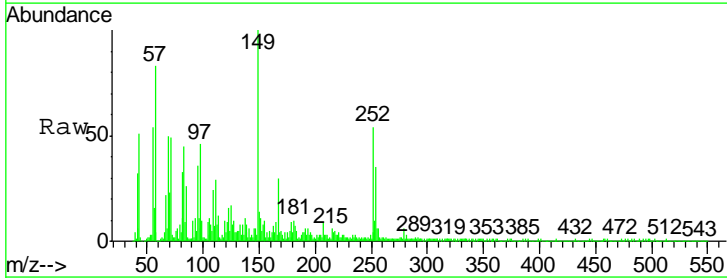
Instrument :
 BNA_M
 ClientSampled :
 SST02047

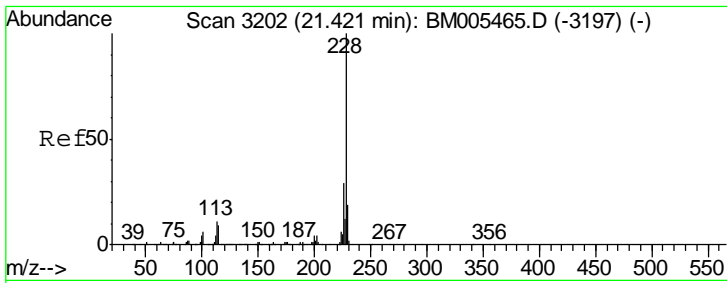
Tgt Ion	Resp	Lower	Upper
228	100		
229	21.5	15.5	23.3
226	27.8	21.8	32.8



#81
 Bis(2-ethylhexyl)phthalate
 Concen: 20.16 ng/ul
 RT: 21.30 min Scan# 3182
 Delta R.T. -0.01 min
 Lab File: BM005500.D
 Acq: 19 May 2016 15:50

Tgt Ion	Resp	Lower	Upper
149	100		
167	29.6	21.9	32.9
279	5.8	3.0	4.4#

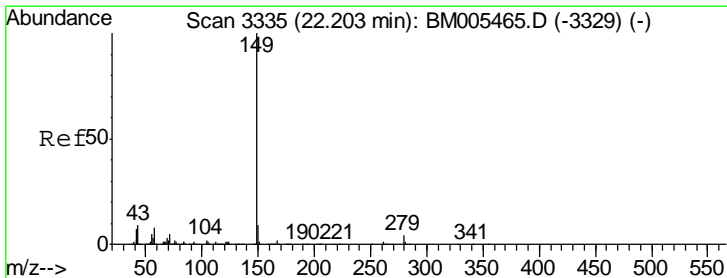
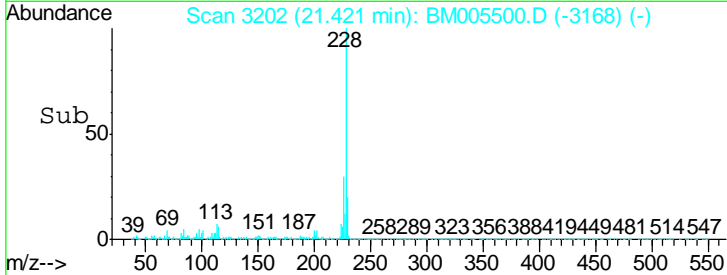
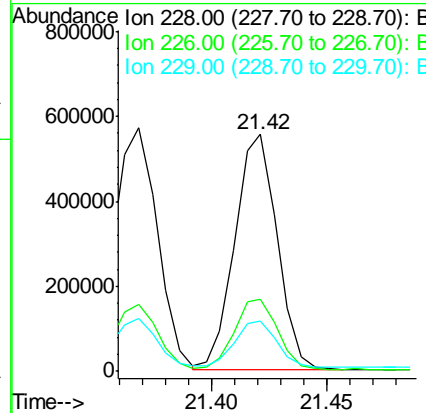
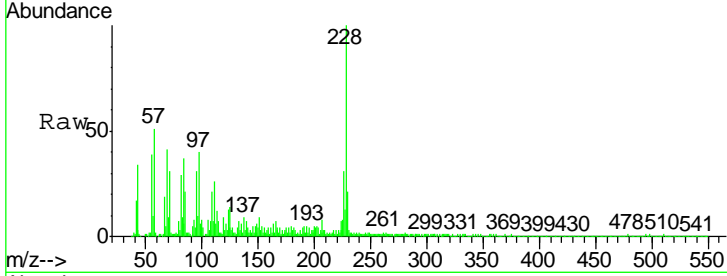




#82
 Chrysene
 Concen: 19.86 ng/ul
 RT: 21.42 min Scan# 3202
 Delta R.T. 0.00 min
 Lab File: BM005500.D
 Acq: 19 May 2016 15:50

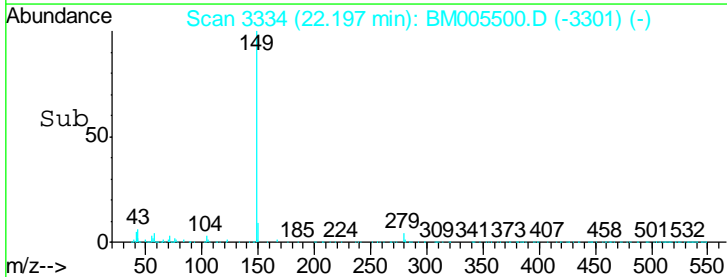
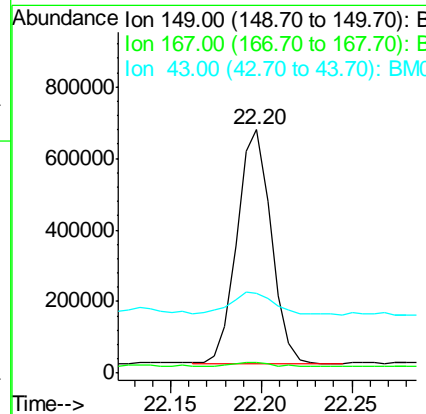
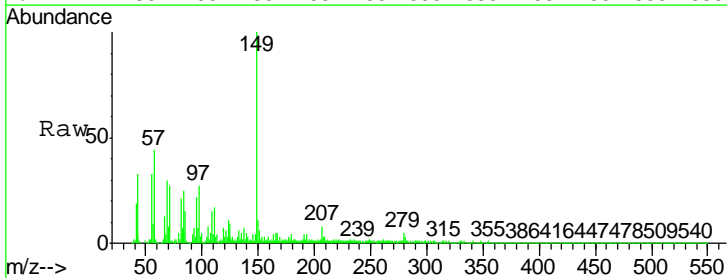
Instrument :
 BNA_M
 ClientSampled :
 SSTD02047

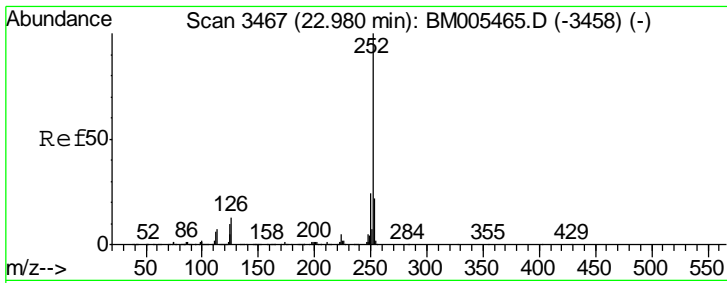
Tgt Ion	Resp	Lower	Upper
228	100		
226	30.7	23.6	35.4
229	21.0	15.4	23.0



#84
 Di-n-octyl phthalate
 Concen: 18.42 ng/ul
 RT: 22.20 min Scan# 3334
 Delta R.T. -0.01 min
 Lab File: BM005500.D
 Acq: 19 May 2016 15:50

Tgt Ion	Resp	Lower	Upper
149	100		
167	4.5	1.3	1.9#
43	32.9	7.4	11.0#

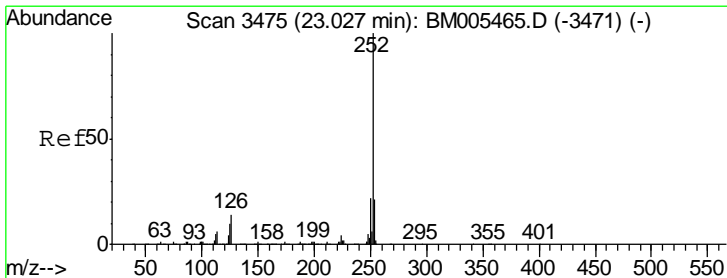
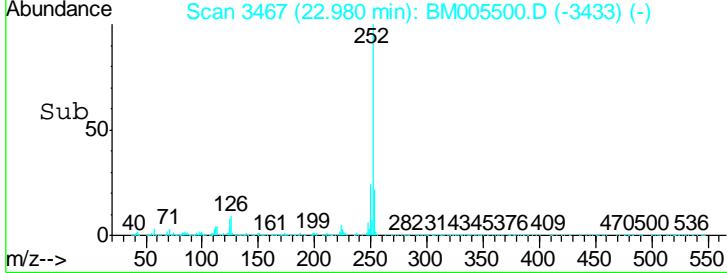
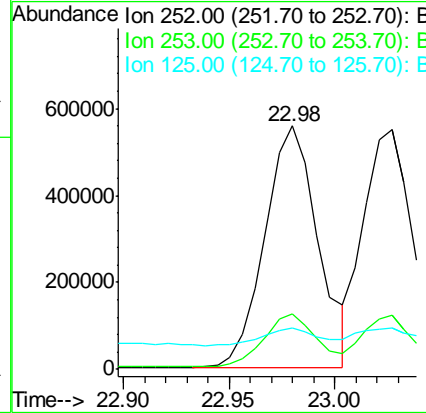
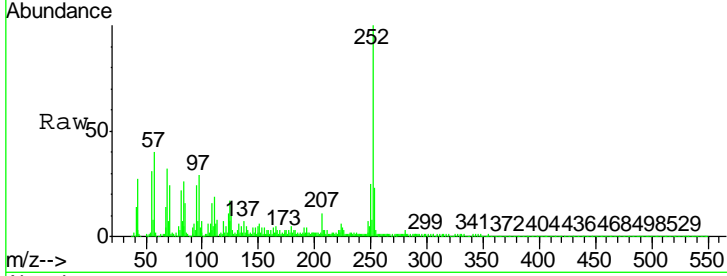




#85
 Benzo(b)fluoranthene
 Concen: 19.53 ng/ul
 RT: 22.98 min Scan# 3467
 Delta R.T. 0.00 min
 Lab File: BM005500.D
 Acq: 19 May 2016 15:50

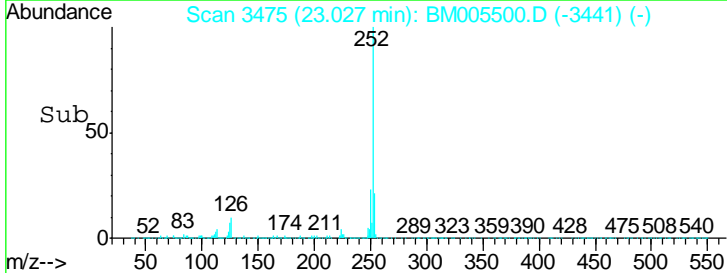
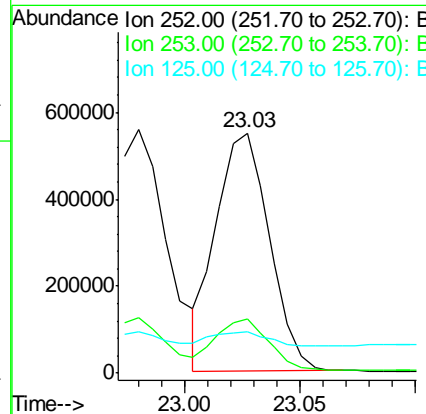
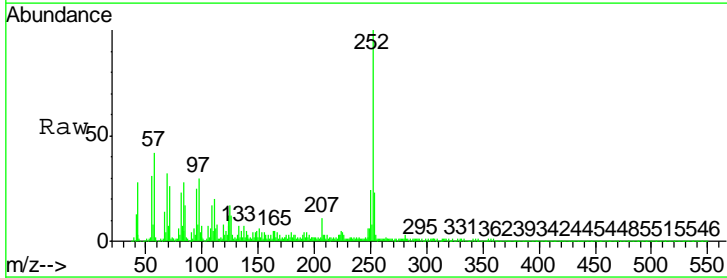
Instrument :
 BNA_M
 ClientSampled :
 SSTD02047

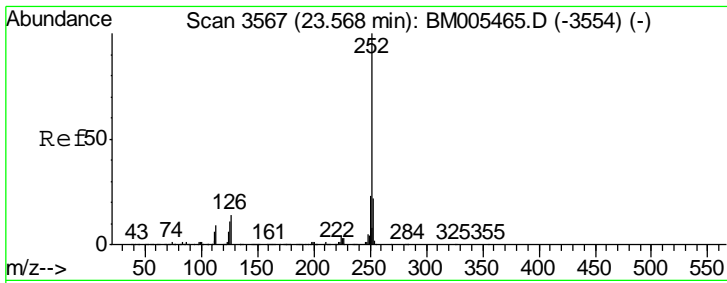
Tgt Ion	Resp	Lower	Upper
252	977832		
253	22.6	17.4	26.2
125	17.1	8.4	12.6#



#86
 Benzo(k)fluoranthene
 Concen: 18.14 ng/ul
 RT: 23.03 min Scan# 3475
 Delta R.T. 0.00 min
 Lab File: BM005500.D
 Acq: 19 May 2016 15:50

Tgt Ion	Resp	Lower	Upper
252	882650		
253	22.7	17.3	25.9
125	17.4	8.0	12.0#

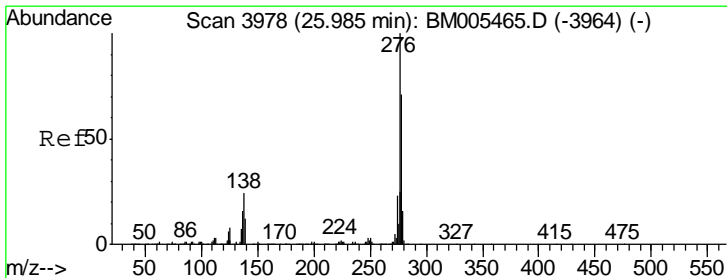
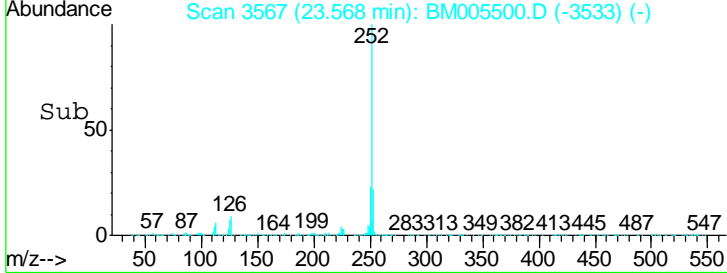
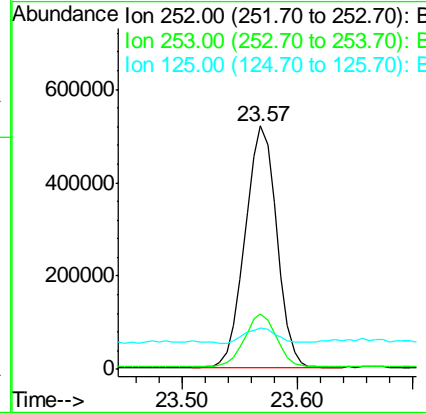
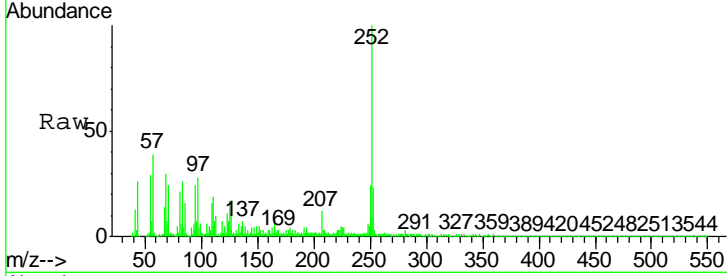




#88
 Benzo(a)pyrene
 Concen: 19.77 ng/ul
 RT: 23.57 min Scan# 3567
 Delta R.T. 0.00 min
 Lab File: BM005500.D
 Acq: 19 May 2016 15:50

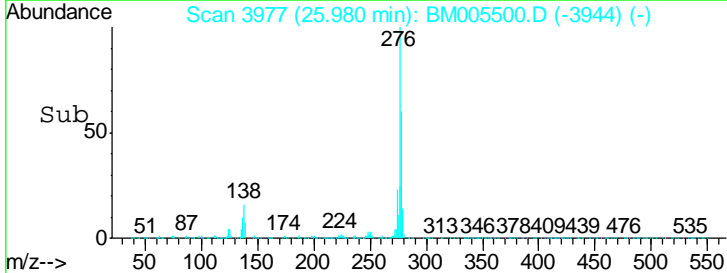
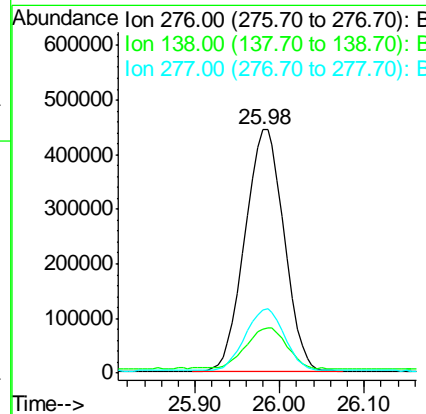
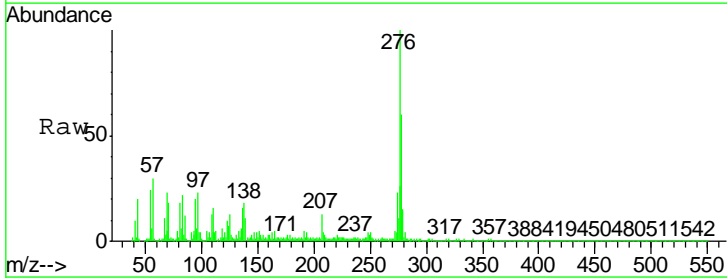
Instrument :
 BNA_M
 ClientSampled :
 SST02047

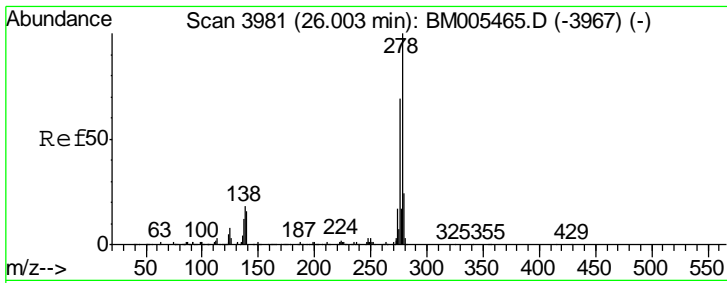
Tgt Ion	Resp	Lower	Upper
252	100		
253	22.7	17.5	26.3
125	16.9	8.7	13.1#



#89
 Indeno(1,2,3-cd)pyrene
 Concen: 21.87 ng/ul
 RT: 25.98 min Scan# 3977
 Delta R.T. -0.01 min
 Lab File: BM005500.D
 Acq: 19 May 2016 15:50

Tgt Ion	Resp	Lower	Upper
276	100		
138	18.2	21.0	31.6#
277	26.0	19.9	29.9

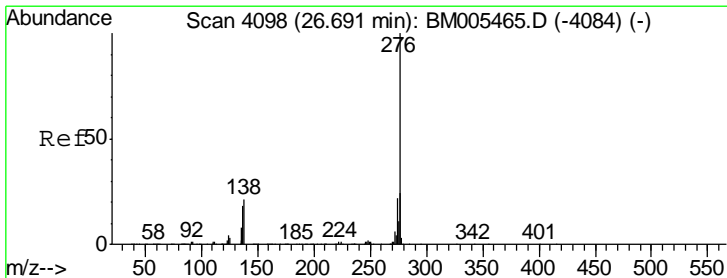
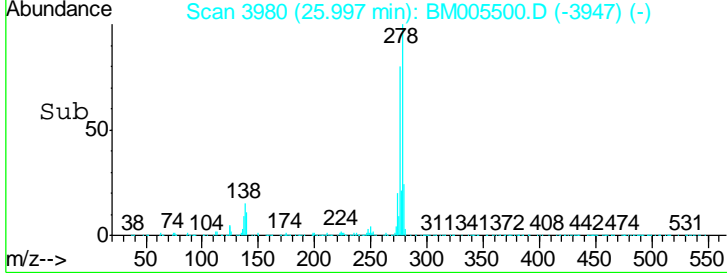
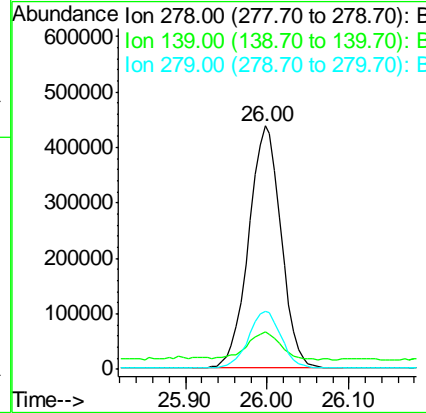
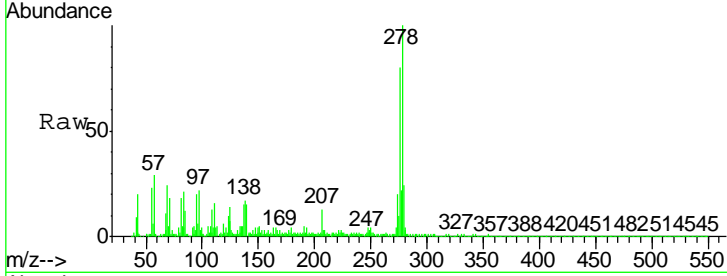




#90
 Dibenzo(a,h)anthracene
 Concen: 22.04 ng/ul
 RT: 26.00 min Scan# 3980
 Delta R.T. -0.01 min
 Lab File: BM005500.D
 Acq: 19 May 2016 15:50

Instrument :
 BNA_M
 ClientSampleId :
 SST02047

Tgt Ion	Resp	Lower	Upper
278	1199460		
139	15.2	13.8	20.6
279	24.0	18.9	28.3



#91
 Benzo(g,h,i)perylene
 Concen: 21.95 ng/ul
 RT: 26.69 min Scan# 4098
 Delta R.T. 0.00 min
 Lab File: BM005500.D
 Acq: 19 May 2016 15:50

Tgt Ion	Resp	Lower	Upper
276	1246150		
138	17.1	18.2	27.4#
277	23.8	19.4	29.2

