

Data Path : Z:\HPCHEM1\BNA_M\DATA\BM051916\
 Data File : BM005518.D
 Acq On : 20 May 2016 03:22
 Operator : UM/SJ
 Sample : H2890-16 5X
 Misc :
 ALS Vial : 19 Sample Multiplier: 1

Instrument :
 BNA_M
 ClientSampleId :
 D9WY6

Integration Parameters: LSCINT.P

Integrator: RTE
 Smoothing : OFF Filtering: 5
 Sampling : 1 Min Area: 1 % of largest Peak
 Start Thrs: 0.2 Max Peaks: 100
 Stop Thrs : 0 Peak Location: TOP

If leading or trailing edge < 100 prefer < Baseline drop else tangent >
 Peak separation: 5

Method : Z:\HPCHEM1\BNA_M\METHODS\SOM02.2-EPA-BM051816.M
 Title : SVOA CALIBRATION

Signal : TIC

peak #	R.T. min	first scan	max scan	last scan	PK TY	peak height	corr. area	corr. % max.	% of total
1	7.004	745	751	757	rBV	49130	89856	2.73%	0.568%
2	7.175	773	780	787	rBV	28699	50981	1.55%	0.322%
3	7.375	807	814	822	rBV	45081	76799	2.34%	0.485%
4	7.839	887	893	900	rBV	243687	404677	12.31%	2.558%
5	8.539	1004	1012	1020	rVB2	63710	112017	3.41%	0.708%
6	8.992	1083	1089	1095	rBV	43390	71353	2.17%	0.451%
7	9.710	1204	1211	1217	rBV2	33748	60310	1.84%	0.381%
8	10.251	1296	1303	1310	rVB	64289	113561	3.46%	0.718%
9	10.627	1359	1367	1374	rBV	445051	765121	23.28%	4.836%
10	10.763	1384	1390	1396	rBV2	69645	126058	3.84%	0.797%
11	12.286	1643	1649	1657	rVB	85986	141200	4.30%	0.893%
12	12.504	1681	1686	1694	rVB	63830	104809	3.19%	0.663%
13	13.627	1871	1877	1888	rVB3	29323	76645	2.33%	0.484%
14	13.786	1898	1904	1909	rBV	52075	89579	2.73%	0.566%
15	13.845	1909	1914	1915	rVV	30369	38541	1.17%	0.244%
16	13.874	1915	1919	1924	rVV	150241	222677	6.78%	1.408%
17	13.921	1924	1927	1935	rVB	56457	81818	2.49%	0.517%
18	14.021	1940	1944	1948	rBV	22583	32976	1.00%	0.208%
19	14.163	1962	1968	1979	rVB	162805	276927	8.43%	1.750%
20	14.468	2012	2020	2027	rBV2	789911	1273499	38.75%	8.050%
21	14.674	2049	2055	2063	rBV4	13974	35962	1.09%	0.227%
22	14.868	2083	2088	2094	rVB5	22735	36347	1.11%	0.230%
23	15.457	2179	2188	2193	rBV	257732	388908	11.83%	2.458%
24	15.527	2193	2200	2210	rVB6	47836	105936	3.22%	0.670%
25	16.609	2378	2384	2392	rVB2	88895	137672	4.19%	0.870%
26	17.209	2480	2486	2491	rBV	1276647	1870417	56.92%	11.823%
27	17.251	2491	2493	2496	rVV	95910	113410	3.45%	0.717%
28	17.304	2498	2502	2507	rVB	289120	427138	13.00%	2.700%
29	18.174	2646	2650	2655	rBV	235325	304813	9.28%	1.927%
30	18.321	2671	2675	2681	rVB	73461	98115	2.99%	0.620%
31	18.715	2737	2742	2747	rBV3	140765	227175	6.91%	1.436%
32	18.815	2755	2759	2763	rBV	79600	119010	3.62%	0.752%
33	19.262	2831	2835	2839	rBV	241143	300418	9.14%	1.899%
34	19.598	2887	2892	2895	rBV	509801	774056	23.55%	4.893%

Data Path : Z:\HPCHEM1\BNA_M\DATA\BM051916\
Data File : BM005518.D
Acq On : 20 May 2016 03:22
Operator : UM/SJ
Sample : H2890-16 5X
Misc :
ALS Vial : 19 Sample Multiplier: 1

Instrument :
BNA_M
ClientSampleId :
D9WY6

Integration Parameters: LSCINT.P
Integrator: RTE
Smoothing : OFF Filtering: 5
Sampling : 1 Min Area: 1 % of largest Peak
Start Thrs: 0.2 Max Peaks: 100
Stop Thrs : 0 Peak Location: TOP

If leading or trailing edge < 100 prefer < Baseline drop else tangent >
Peak separation: 5

Method : Z:\HPCHEM1\BNA_M\METHODS\SOM02.2-EPA-BM051816.M
Title : SVOA CALIBRATION

35	21.303	3179	3182	3188	rBV	212356	282371	8.59%	1.785%
36	21.386	3191	3196	3200	rVV	2391986	3102468	94.41%	19.611%
37	23.674	3579	3585	3593	rBV2	1677014	3286273	100.00%	20.773%

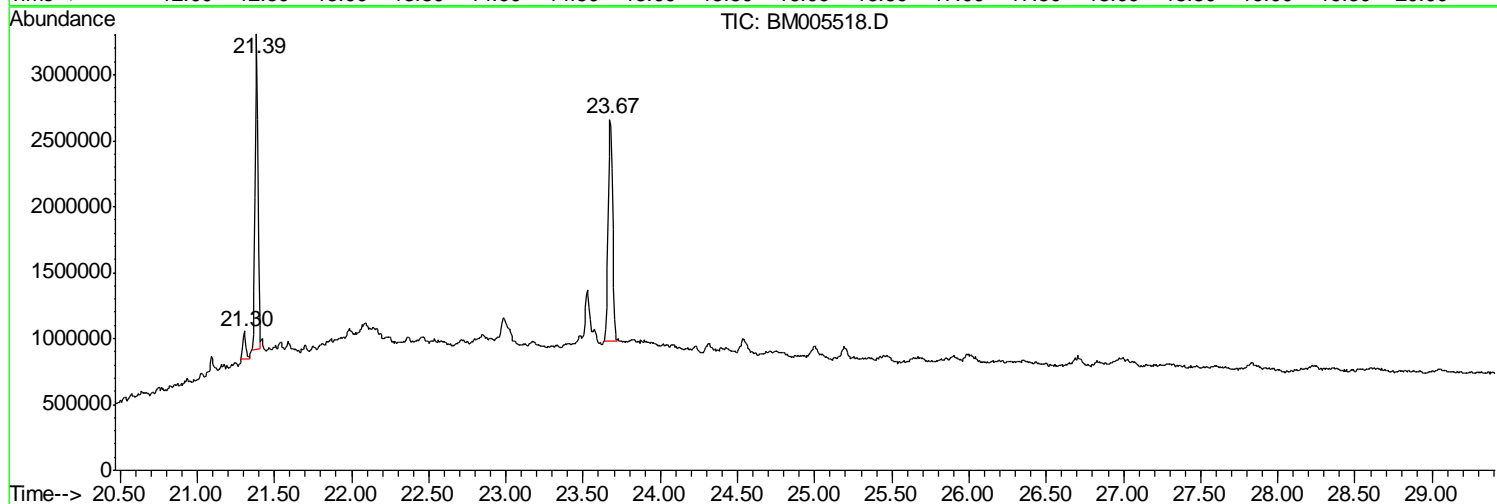
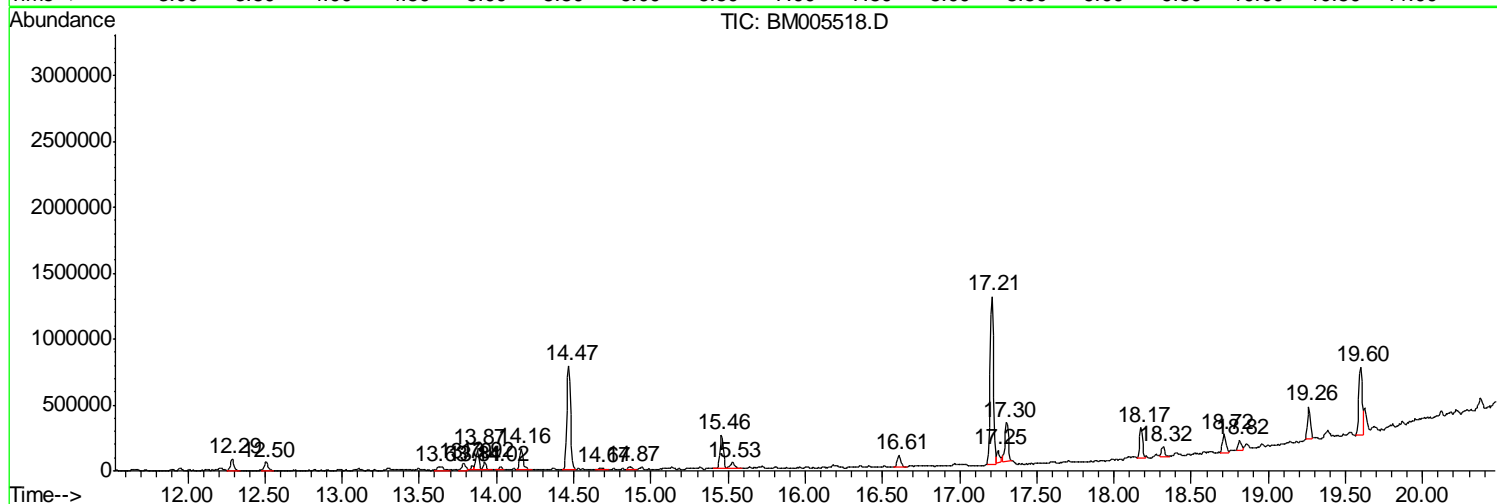
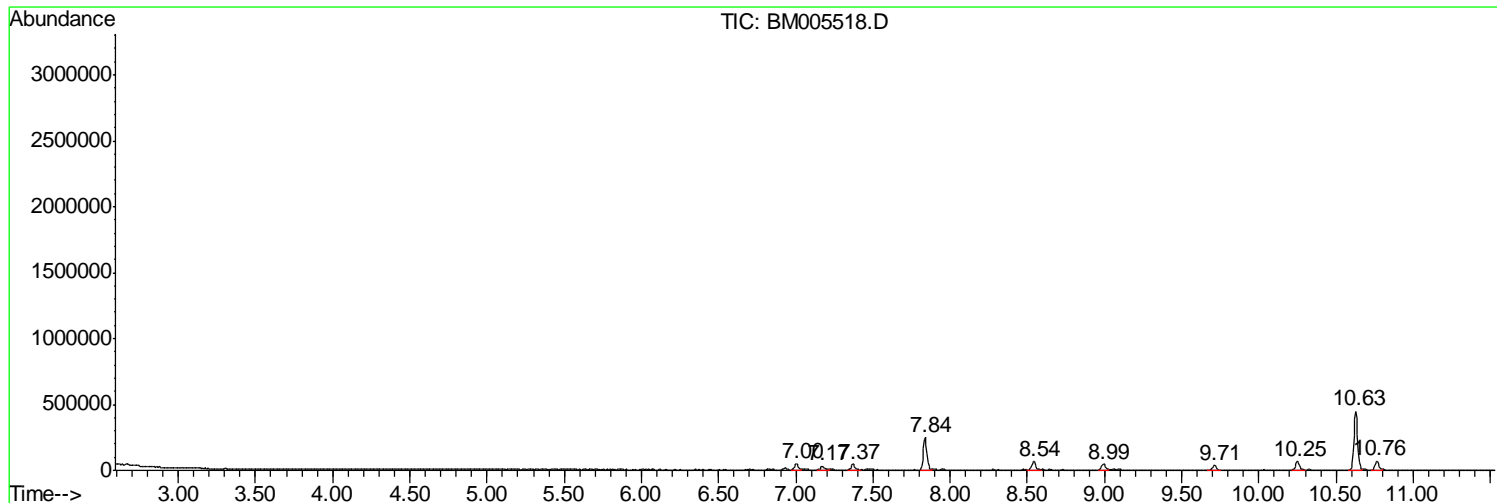
Sum of corrected areas: 15819893

Data Path : Z:\HPCHEM1\BNA_M\DATA\BM051916\
 Data File : BM005518.D
 Acq On : 20 May 2016 03:22
 Operator : UM/SJ
 Sample : H2890-16 5X
 Misc :
 ALS Vial : 19 Sample Multiplier: 1

Instrument :
 BNA_M
 ClientSampled :
 D9WY6

Quant Method : Z:\HPCHEM1\BNA_M\METHODS\SOM02.2-EPA-BM051816.M
 Quant Title : SVOA CALIBRATION

TIC Library : C:\DATABASE\NIST02.L
 TIC Integration Parameters: LSCINT.P



Data Path : Z:\HPCHEM1\BNA_M\DATA\BM051916\
 Data File : BM005518.D
 Acq On : 20 May 2016 03:22
 Operator : UM/SJ
 Sample : H2890-16 5X
 Misc :
 ALS Vial : 19 Sample Multiplier: 1

Instrument :
 BNA_M
 ClientSampleID :
 D9WY6

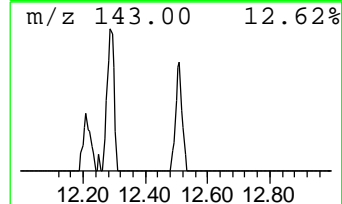
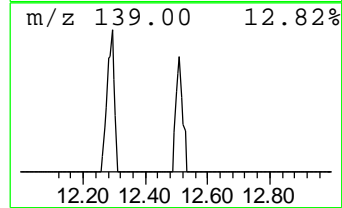
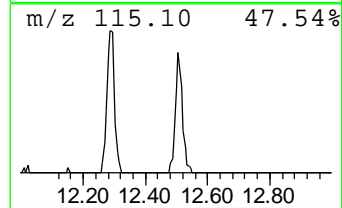
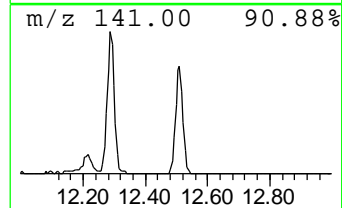
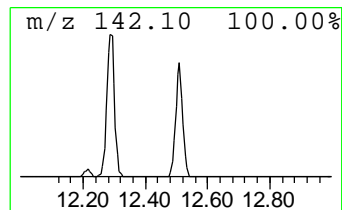
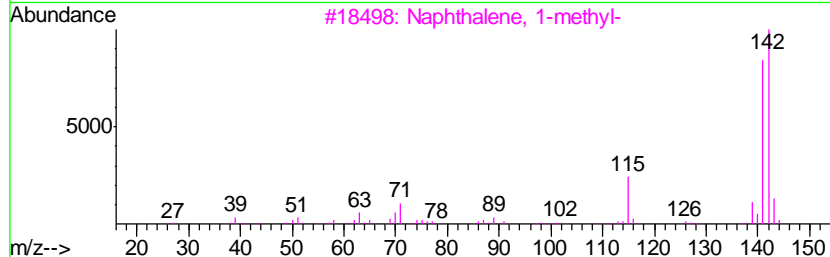
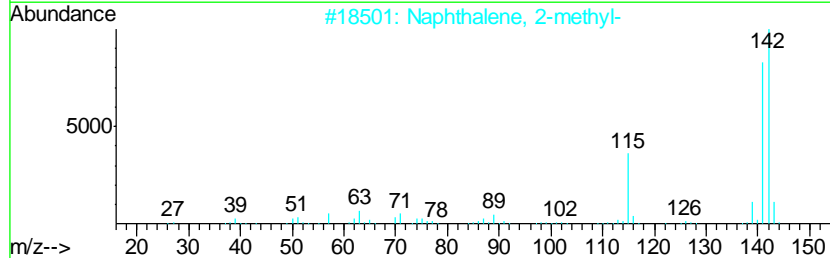
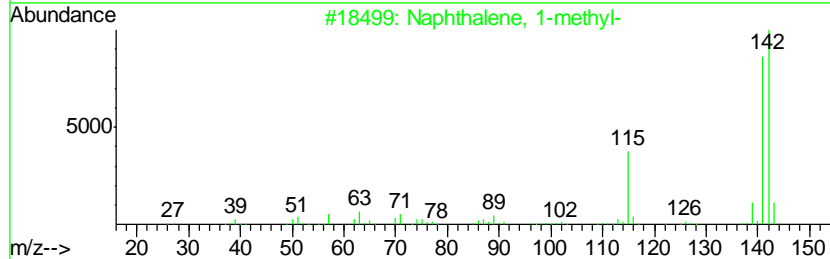
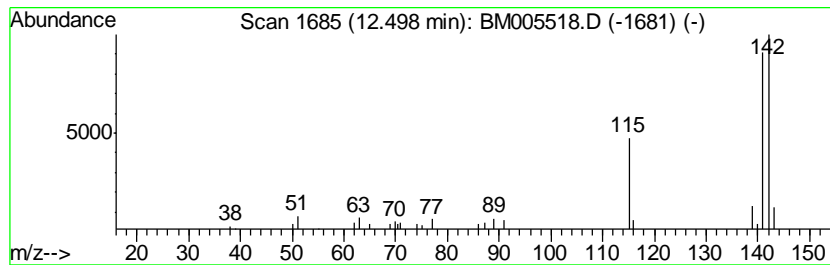
Quant Method : Z:\HPCHEM1\BNA_M\METHODS\SOM02.2-EPA-BM051816.M
 Quant Title : SVOA CALIBRATION

TIC Library : C:\DATABASE\NIST02.L
 TIC Integration Parameters: LSCINT.P

 Peak Number 1 Naphthalene, 1-methyl- Concentration Rank 1

R.T.	EstConc	Area	Relative to ISTD	R.T.
12.50	2.74 ng/ul	104809	Naphthalene-d8	10.63

Hit#	of	Tentative ID	MW	MolForm	CAS#	Qual
1	5	Naphthalene, 1-methyl-	142	C11H10	000090-12-0	95
2		Naphthalene, 2-methyl-	142	C11H10	000091-57-6	94
3		Naphthalene, 1-methyl-	142	C11H10	000090-12-0	94
4		1,4-Methanonaphthalene, 1,4-dihy...	142	C11H10	004453-90-1	91
5		Naphthalene, 1-methyl-	142	C11H10	000090-12-0	91



Data Path : Z:\HPCHEM1\BNA_M\DATA\BM051916\
 Data File : BM005518.D
 Acq On : 20 May 2016 03:22
 Operator : UM/SJ
 Sample : H2890-16 5X
 Misc :
 ALS Vial : 19 Sample Multiplier: 1

Instrument :
 BNA_M
 ClientSampled :
 D9WY6

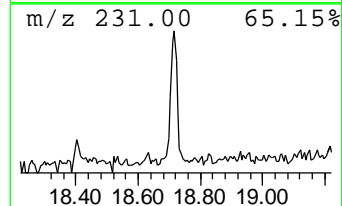
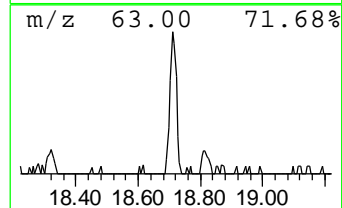
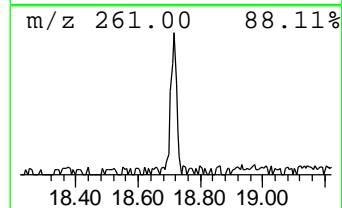
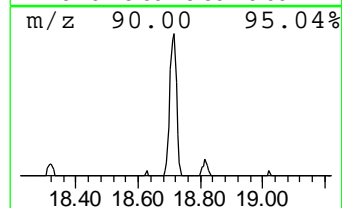
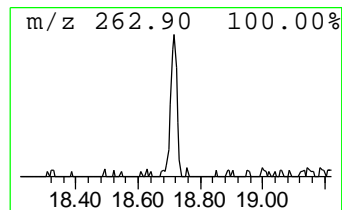
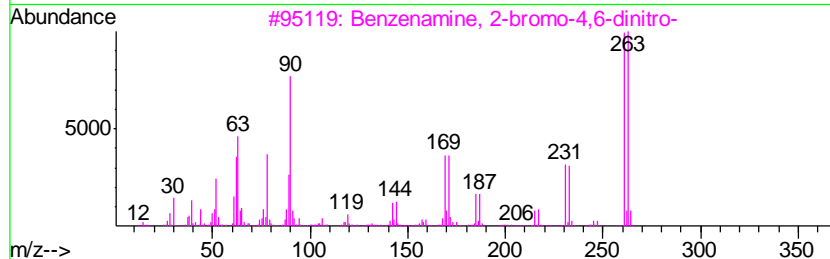
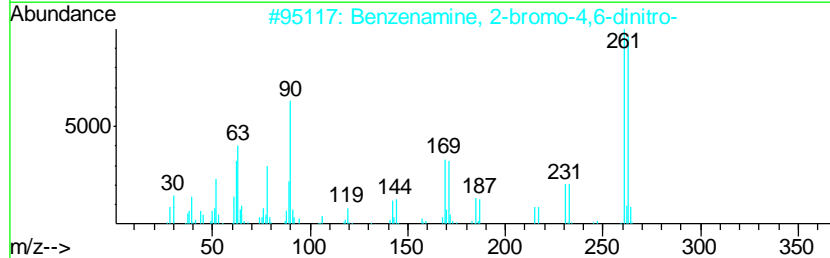
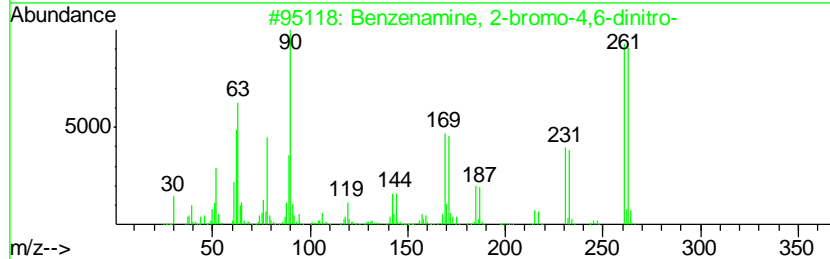
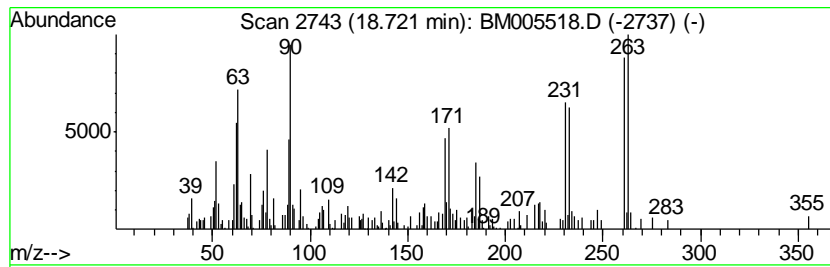
Quant Method : Z:\HPCHEM1\BNA_M\METHODS\SOM02.2-EPA-BM051816.M
 Quant Title : SVOA CALIBRATION

TIC Library : C:\DATABASE\NIST02.L
 TIC Integration Parameters: LSCINT.P

 Peak Number 2 Benzenamine, 2-bromo-4,6-di... Concentration Rank 2

R.T.	EstConc	Area	Relative to ISTD	R.T.
18.72	2.43 ng/ul	227175	Phenanthrene-d10	17.21

Hit#	of	Tentative ID	MW	MolForm	CAS#	Qual
1	5	Benzenamine, 2-bromo-4,6-dinitro-	261	C6H4BrN3O4	001817-73-8	99
2		Benzenamine, 2-bromo-4,6-dinitro-	261	C6H4BrN3O4	001817-73-8	98
3		Benzenamine, 2-bromo-4,6-dinitro-	261	C6H4BrN3O4	001817-73-8	96
4		2-Bromo-3,5-dinitrobenzenamine	261	C6H4BrN3O4	116529-41-0	64
5		1,3,5-Norcaratriene	90	C7H6	004646-69-9	49



Data Path : Z:\HPCHEM1\BNA_M\DATA\BM051916\
Data File : BM005518.D
Acq On : 20 May 2016 03:22
Operator : UM/SJ
Sample : H2890-16 5X
Misc :
ALS Vial : 19 Sample Multiplier: 1

Instrument :
BNA_M
ClientSampleId :
D9WY6

Quant Method : Z:\HPCHEM1\BNA_M\METHODS\SOM02.2-EPA-BM051816.M
Quant Title : SVOA CALIBRATION

TIC Library : C:\DATABASE\NIST02.L
TIC Integration Parameters: LSCINT.P

TIC Top Hit name	RT	EstConc	Units	Response	--Internal Standard--			
					#	RT	Resp	Conc
Naphthalene, 1-me...	12.50	2.7	ng/ul	104809	2	10.63	765121	20.0
Benzenamine, 2-br...	18.72	2.4	ng/ul	227175	4	17.21	1870420	20.0