

Data Path : Z:\SVOASRV\HPCHEM1\BNA M\DATA\BM051920\  
 Data File : BM026030.D  
 Acq On : 19 May 2020 23:16  
 Operator : MA/SJ  
 Sample : L2681-02  
 Misc :  
 ALS Vial : 19 Sample Multiplier: 1

Instrument :  
 BNA\_M  
 ClientSampled :  
 C5CA4

Integration Parameters: LSCINT.P

Integrator: RTE  
 Smoothing : OFF  
 Sampling : 1  
 Start Thrs: 0.2  
 Stop Thrs : 0

Filtering: 5  
 Min Area: 0.1 % of largest Peak  
 Max Peaks: 100  
 Peak Location: TOP

If leading or trailing edge < 100 prefer < Baseline drop else tangent >  
 Peak separation: 5

Method : Z:\SVOASRV\HPCHEM1\BNA\_M\METHODS\SOM-EPA-BM051320MA.M  
 Title : SVOA CALIBRATION

Signal : TIC: BM026034.D

peak #	R.T. min	first scan	max scan	last scan	PK TY	peak height	corr. area	corr. % max.	% of total
1	5.193	387	392	410	rVB	766571	1591874	1.11%	0.243%
2	5.557	439	454	462	rVV3	1021935	2537970	1.76%	0.388%
3	6.610	624	633	638	rBV2	1162837	2184694	1.52%	0.334%
4	6.746	651	656	662	rVB	1691035	2401949	1.67%	0.367%
5	6.852	668	674	679	rBV	894101	1380141	0.96%	0.211%
6	7.157	720	726	733	rBV2	6173166	10298611	7.16%	1.575%
7	7.504	778	785	789	rBV	1579048	2261756	1.57%	0.346%
8	7.622	796	805	813	rVB	3475971	5540043	3.85%	0.847%
9	7.869	842	847	855	rVB	2004672	3127950	2.17%	0.478%
10	8.034	865	875	884	rVB2	4775685	10110932	7.03%	1.546%
11	8.146	889	894	898	rBV	2849333	3827038	2.66%	0.585%
12	8.304	912	921	924	rBV2	777103	1906648	1.33%	0.292%
13	8.457	940	947	951	rBV	1271986	2034963	1.41%	0.311%
14	8.504	951	955	960	rVV	1543042	2210094	1.54%	0.338%
15	8.604	966	972	976	rVV	3283399	5204614	3.62%	0.796%
16	8.646	976	979	982	rVV	1097119	1757234	1.22%	0.269%
17	8.675	982	984	991	rVV3	873475	1796064	1.25%	0.275%
18	8.746	991	996	1004	rVB	2774337	4139389	2.88%	0.633%
19	8.846	1005	1013	1021	rVB7	711273	1769040	1.23%	0.270%
20	8.934	1021	1028	1032	rBV	1022496	1935998	1.35%	0.296%
21	9.122	1055	1060	1065	rBV	2120261	3074295	2.14%	0.470%
22	9.181	1065	1070	1077	rVB	3068446	4812502	3.35%	0.736%
23	9.363	1092	1101	1108	rBV3	990209	2536385	1.76%	0.388%
24	9.534	1126	1130	1134	rVB	1099034	1518054	1.06%	0.232%
25	9.687	1145	1156	1162	rBV3	3144234	6858184	4.77%	1.049%
26	9.904	1186	1193	1199	rVB4	1999727	4047735	2.81%	0.619%
27	9.981	1199	1206	1214	rVB3	1021732	2267653	1.58%	0.347%
28	10.275	1249	1256	1259	rBV	2689043	4726304	3.29%	0.723%
29	10.351	1259	1269	1273	rVV2	32420858	79371505	55.19%	12.135%
30	10.434	1279	1283	1291	rVV2	720468	1482539	1.03%	0.227%
31	11.728	1496	1503	1511	rBV	1025281	1670856	1.16%	0.255%
32	11.945	1531	1540	1549	rVB	13190543	21547739	14.98%	3.294%
33	12.169	1570	1578	1588	rVV	11409711	18237396	12.68%	2.788%
34	12.975	1709	1715	1717	rBV2	2112981	3167753	2.20%	0.484%

Data Path : Z:\SVOASRV\HPCHEM1\BNA M\DATA\BM051920\  
 Data File : BM026030.D  
 Acq On : 19 May 2020 23:16  
 Operator : MA/SJ  
 Sample : L2681-02  
 Misc :  
 ALS Vial : 19 Sample Multiplier: 1

Instrument :  
 BNA\_M  
 ClientSampleId :  
 C5CA4

## Integration Parameters: LSCINT.P

Integrator: RTE  
 Smoothing : OFF  
 Sampling : 1  
 Start Thrs: 0.2  
 Stop Thrs : 0

Filtering: 5  
 Min Area: 0.1 % of largest Peak  
 Max Peaks: 100  
 Peak Location: TOP

If leading or trailing edge < 100 prefer < Baseline drop else tangent >  
 Peak separation: 5

Method : Z:\SVOASRV\HPCHEM1\BNA\_M\METHODS\SOM-EPA-BM051320MA.M  
 Title : SVOA CALIBRATION

35	12.998	1717	1719	1729	rVB	1423351	1695501	1.18%	0.259%
36	13.169	1742	1748	1751	rBV	2710813	4629072	3.22%	0.708%
37	13.304	1764	1771	1773	rBV	3649547	5750825	4.00%	0.879%
38	13.475	1789	1800	1804	rVV	8811204	16002817	11.13%	2.447%
39	13.528	1804	1809	1813	rVV	6244702	9462184	6.58%	1.447%
40	13.569	1813	1816	1821	rVV	2509289	3589754	2.50%	0.549%
41	13.710	1835	1840	1843	rVV	4973423	7919308	5.51%	1.211%
42	13.739	1843	1845	1850	rVB	2055251	2310927	1.61%	0.353%
43	13.833	1856	1861	1864	rBV	2681215	4063831	2.83%	0.621%
44	13.875	1864	1868	1873	rVB2	3614989	4991796	3.47%	0.763%
45	14.086	1898	1904	1907	rBV2	2845524	3901539	2.71%	0.597%
46	14.133	1907	1912	1920	rVB3	3571067	7084607	4.93%	1.083%
47	14.210	1920	1925	1928	rBV2	2396152	3479994	2.42%	0.532%
48	14.245	1928	1931	1935	rVB	2043064	2483320	1.73%	0.380%
49	14.369	1946	1952	1960	rBV	2619674	6537446	4.55%	1.000%
50	14.451	1960	1966	1972	rVB3	1311025	2239574	1.56%	0.342%
51	14.557	1973	1984	1991	rBV3	3897462	9295362	6.46%	1.421%
52	14.639	1991	1998	2002	rVB	3584038	5220629	3.63%	0.798%
53	14.704	2005	2009	2013	rVB3	1053665	1392046	0.97%	0.213%
54	14.792	2016	2024	2028	rBV2	15323823	23331175	16.22%	3.567%
55	14.833	2028	2031	2036	rVB	3031303	3833666	2.67%	0.586%
56	14.951	2043	2051	2054	rBV	2807038	6062637	4.22%	0.927%
57	14.980	2054	2056	2062	rVB2	2036383	2733242	1.90%	0.418%
58	15.045	2062	2067	2071	rVB	3331409	3956852	2.75%	0.605%
59	15.116	2071	2079	2080	rBV3	1318423	2718876	1.89%	0.416%
60	15.145	2080	2084	2089	rVB2	4039278	6438851	4.48%	0.984%
61	15.204	2089	2094	2098	rBV3	4437981	6351443	4.42%	0.971%
62	15.251	2098	2102	2105	rBV	1476908	2219341	1.54%	0.339%
63	15.333	2112	2116	2118	rBV	1243907	1362233	0.95%	0.208%
64	15.363	2118	2121	2128	rVB3	2126791	3349033	2.33%	0.512%
65	15.427	2128	2132	2134	rBV3	1388972	2185231	1.52%	0.334%
66	15.498	2140	2144	2148	rBV3	1982734	3210869	2.23%	0.491%
67	15.663	2167	2172	2178	rVB4	1415986	3135100	2.18%	0.479%
68	15.733	2178	2184	2188	rBV3	1192998	2403943	1.67%	0.368%
69	15.904	2206	2213	2216	rVV3	3899752	7066712	4.91%	1.080%
70	15.933	2216	2218	2223	rVB	1830271	1989647	1.38%	0.304%
71	16.263	2270	2274	2277	rBV	2769407	3492373	2.43%	0.534%

Data Path : Z:\SVOASRV\HPCHEM1\BNA M\DATA\BM051920\  
 Data File : BM026030.D  
 Acq On : 19 May 2020 23:16  
 Operator : MA/SJ  
 Sample : L2681-02  
 Misc :  
 ALS Vial : 19 Sample Multiplier: 1

Instrument :  
 BNA\_M  
 ClientSampleId :  
 C5CA4

Integration Parameters: LSCINT.P

Integrator: RTE  
 Smoothing : OFF  
 Sampling : 1  
 Start Thrs: 0.2  
 Stop Thrs : 0

Filtering: 5  
 Min Area: 0.1 % of largest Peak  
 Max Peaks: 100  
 Peak Location: TOP

If leading or trailing edge < 100 prefer < Baseline drop else tangent >  
 Peak separation: 5

Method : Z:\SVOASRV\HPCHEM1\BNA\_M\METHODS\SOM-EPA-BM051320MA.M  
 Title : SVOA CALIBRATION

72	16.357	2287	2290	2297	rVB3	915029	1860149	1.29%	0.284%
73	16.416	2297	2300	2303	rBV2	1071195	1467172	1.02%	0.224%
74	16.463	2303	2308	2315	rVB7	832810	2090447	1.45%	0.320%
75	16.616	2319	2334	2335	rBV3	43097348	143814799	100.00%	21.988%
76	16.698	2345	2348	2352	rVB	2483569	2812096	1.96%	0.430%
77	16.745	2352	2356	2368	rVB3	1603154	4085448	2.84%	0.625%
78	16.910	2380	2384	2387	rBV	1846583	2514524	1.75%	0.384%
79	16.957	2387	2392	2396	rVV	8911615	11696447	8.13%	1.788%
80	17.010	2396	2401	2404	rVV	3598278	5098539	3.55%	0.780%
81	17.039	2404	2406	2412	rVB	1372938	1582977	1.10%	0.242%
82	17.104	2412	2417	2422	rBV2	1141756	2309128	1.61%	0.353%
83	17.433	2469	2473	2476	rBV2	1557078	1683698	1.17%	0.257%
84	17.480	2478	2481	2486	rVB	1372664	1744794	1.21%	0.267%
85	17.604	2498	2502	2512	rVB2	1132987	2360322	1.64%	0.361%
86	17.774	2526	2531	2536	rBV	3769793	5732317	3.99%	0.876%
87	17.821	2536	2539	2547	rVB	4215417	5730714	3.98%	0.876%
88	17.904	2549	2553	2556	rVV	1080932	1522251	1.06%	0.233%
89	17.963	2558	2563	2567	rVV3	4442873	7391489	5.14%	1.130%
90	18.004	2567	2570	2576	rVB	3290736	4452560	3.10%	0.681%
91	18.121	2582	2590	2595	rBV2	1171843	2034346	1.41%	0.311%
92	18.527	2657	2659	2664	rVV2	980991	1518745	1.06%	0.232%
93	18.580	2665	2668	2671	rVV	968370	1367454	0.95%	0.209%
94	18.704	2684	2689	2693	rBV	2721942	4183459	2.91%	0.640%
95	18.763	2693	2699	2708	rVB5	2023757	5575397	3.88%	0.852%
96	18.962	2729	2733	2738	rBV2	1420591	2043860	1.42%	0.312%
97	19.298	2785	2790	2793	rVV	3900845	5628765	3.91%	0.861%
98	21.092	3090	3095	3099	rBV	2230454	2826285	1.97%	0.432%
99	23.080	3427	3433	3440	rBV	2797916	4895268	3.40%	0.748%
100	23.215	3450	3456	3463	rVB	1558734	2802454	1.95%	0.428%

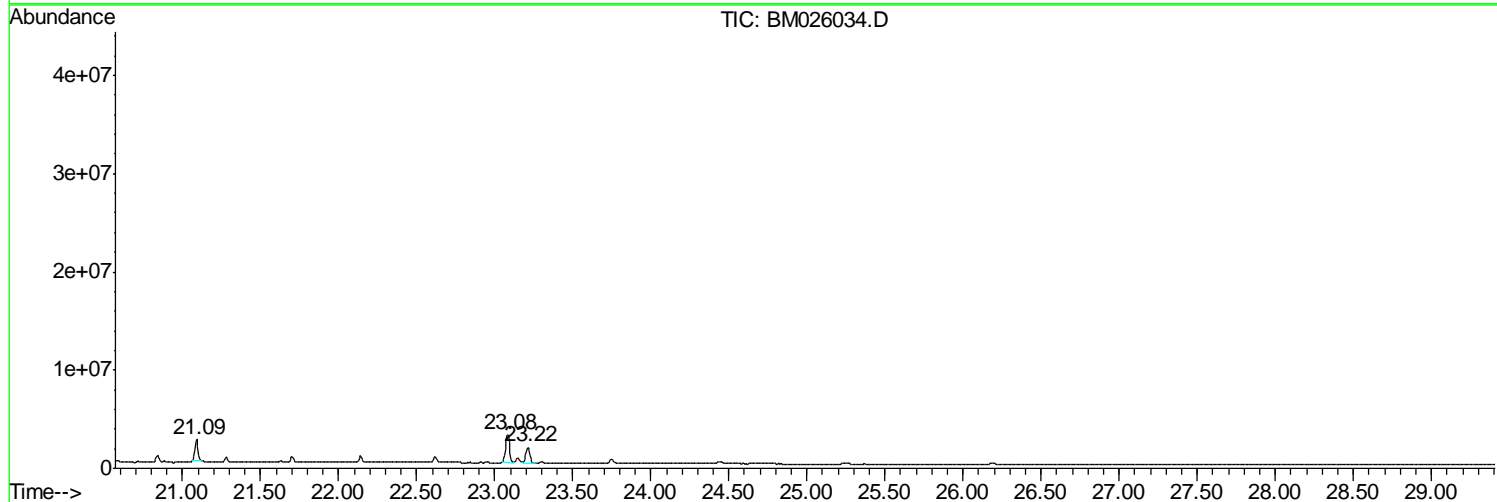
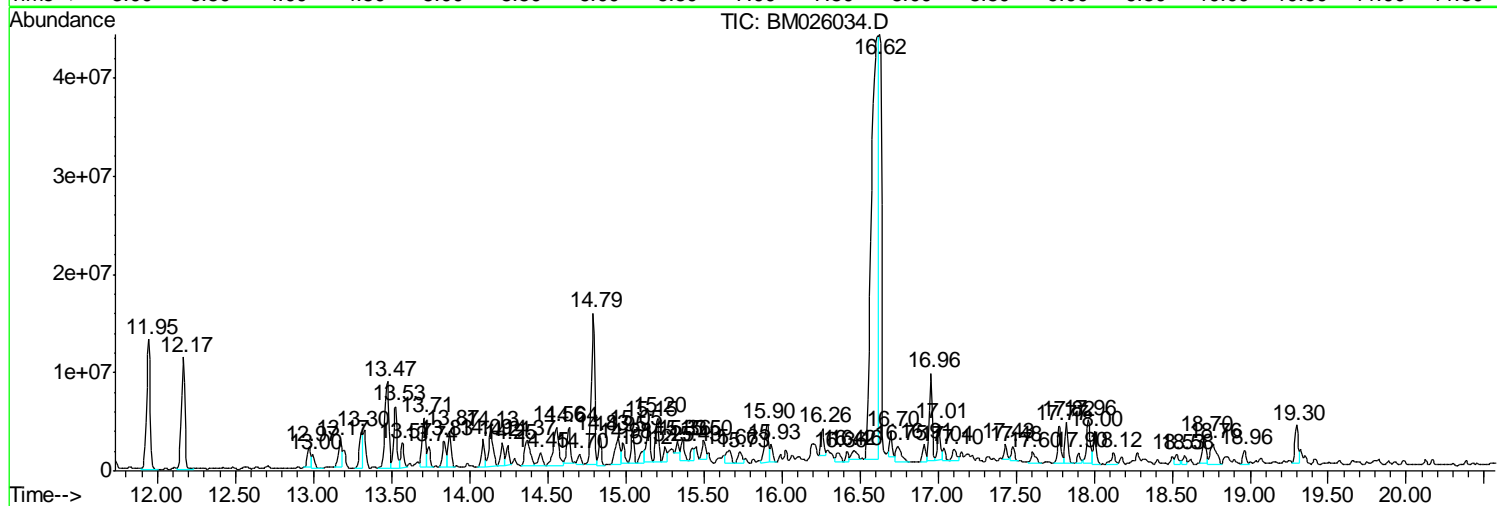
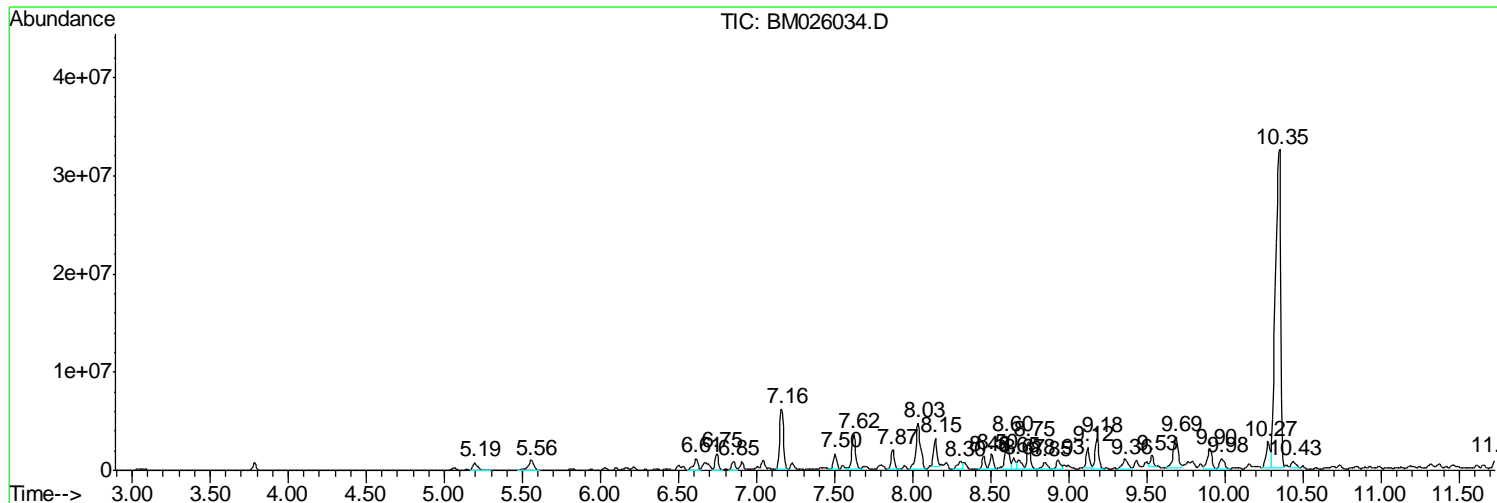
Sum of corrected areas: 654053562

Data Path : Z:\SVOASRV\HPCHEM1\BNA M\DATA\BM051920\  
 Data File : BM026030.D  
 Acq On : 19 May 2020 23:16  
 Operator : MA/SJ  
 Sample : L2681-02  
 Misc :  
 ALS Vial : 19 Sample Multiplier: 1

Instrument :  
 BNA\_M  
 ClientSampleId :  
 C5CA4

Quant Method : Z:\SVOASRV\HPCHEM1\BNA\_M\METHODS\SOM-EPA-BM051320MA.M  
 Quant Title : SVOA CALIBRATION

TIC Library : C:\DATABASE\NIST11.L  
 TIC Integration Parameters: LSCINT.P



Data Path : Z:\SVOASRV\HPCHEM1\BNA M\DATA\BM051920\  
 Data File : BM026030.D  
 Acq On : 19 May 2020 23:16  
 Operator : MA/SJ  
 Sample : L2681-02  
 Misc :  
 ALS Vial : 19 Sample Multiplier: 1

Instrument :  
 BNA\_M  
 ClientSampled :  
 C5CA4

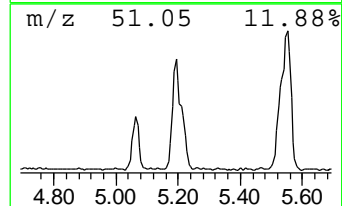
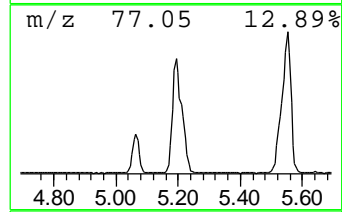
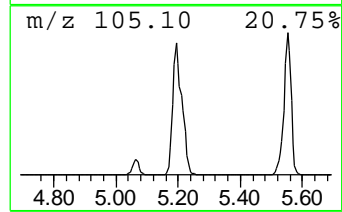
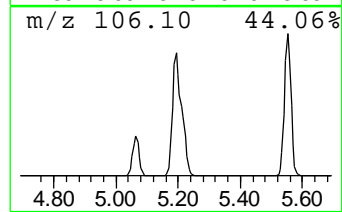
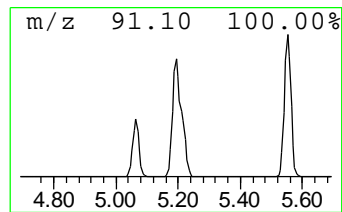
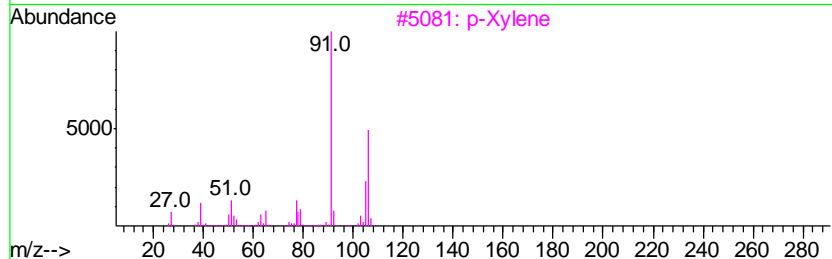
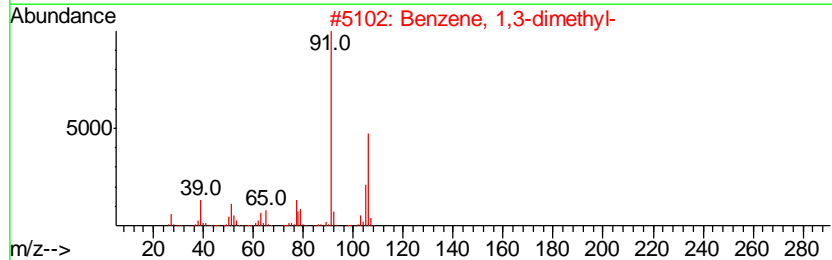
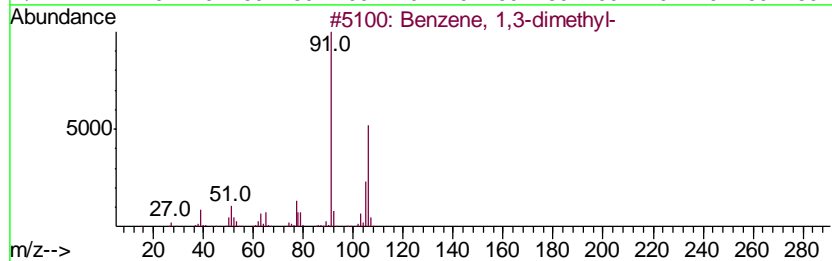
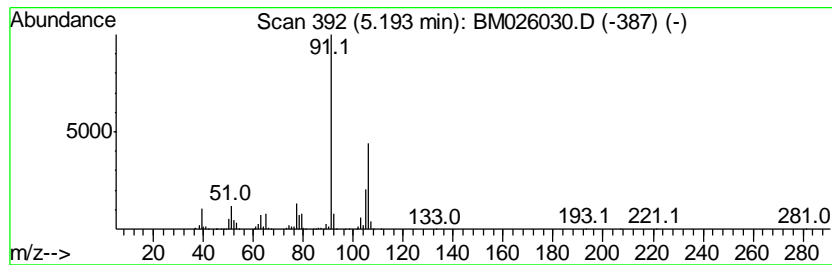
Quant Method : Z:\SVOASRV\HPCHEM1\BNA\_M\METHODS\SOM-EPA-BM051320MA.M  
 Quant Title : SVOA CALIBRATION

TIC Library : C:\DATABASE\NIST11.L  
 TIC Integration Parameters: LSCINT.P

\*\*\*\*\*  
 Peak Number 1 Benzene, 1,3-dimethyl- Concentration Rank 39

R.T.	EstConc	Area	Relative to ISTD	R.T.
5.19	14.08 ng/ul	1591870	1,4-Dichlorobenzene-d4	7.50

Hit#	of	Tentative ID	MW	MolForm	CAS#	Qual
1	5	Benzene, 1,3-dimethyl-	106	C8H10	000108-38-3	97
2		Benzene, 1,3-dimethyl-	106	C8H10	000108-38-3	97
3		p-Xylene	106	C8H10	000106-42-3	97
4		o-Xylene	106	C8H10	000095-47-6	97
5		o-Xylene	106	C8H10	000095-47-6	97



Data Path : Z:\SVOASRV\HPCHEM1\BNA M\DATA\BM051920\  
 Data File : BM026030.D  
 Acq On : 19 May 2020 23:16  
 Operator : MA/SJ  
 Sample : L2681-02  
 Misc :  
 ALS Vial : 19 Sample Multiplier: 1

Instrument :  
 BNA\_M  
 ClientSampled :  
 C5CA4

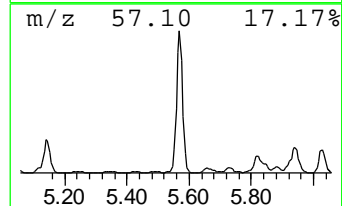
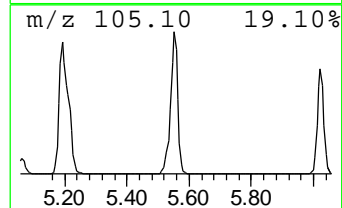
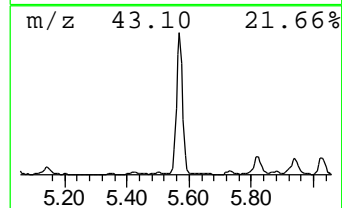
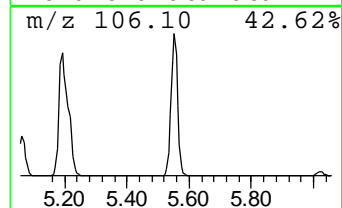
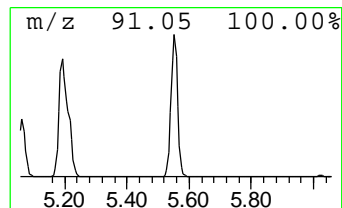
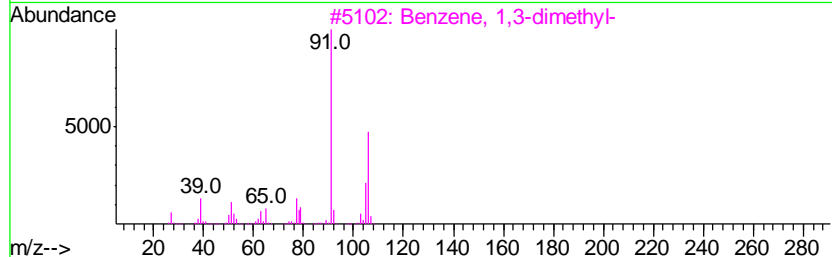
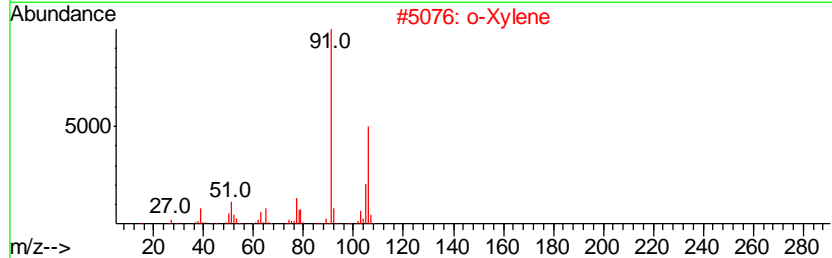
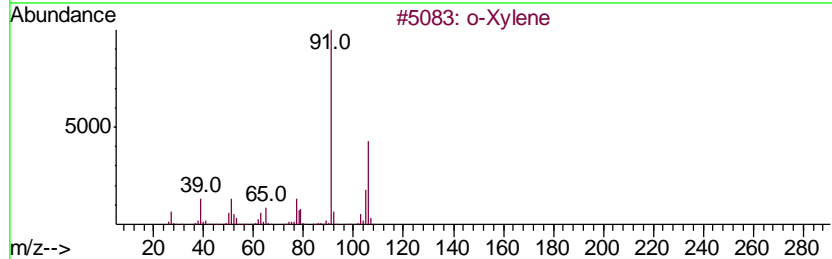
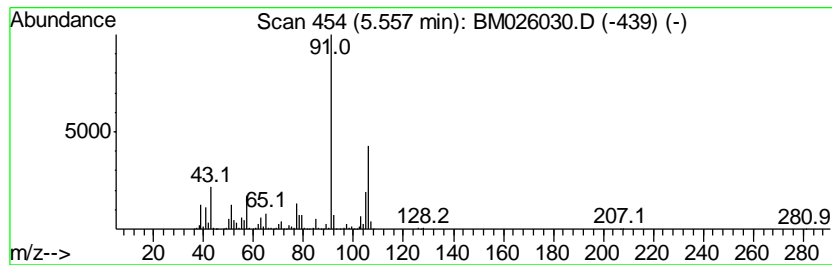
Quant Method : Z:\SVOASRV\HPCHEM1\BNA\_M\METHODS\SOM-EPA-BM051320MA.M  
 Quant Title : SVOA CALIBRATION

TIC Library : C:\DATABASE\NIST11.L  
 TIC Integration Parameters: LSCINT.P

\*\*\*\*\*  
 Peak Number 2 o-Xylene Concentration Rank 20

R.T.	EstConc	Area	Relative to ISTD	R.T.
5.56	22.44 ng/ul	2537970	1,4-Dichlorobenzene-d4	7.50

Hit#	of	Tentative ID	MW	MolForm	CAS#	Qual
1	5	o-Xylene	106	C8H10	000095-47-6	95
2		o-Xylene	106	C8H10	000095-47-6	95
3		Benzene, 1,3-dimethyl-	106	C8H10	000108-38-3	95
4		p-Xylene	106	C8H10	000106-42-3	95
5		Benzene, 1,3-dimethyl-	106	C8H10	000108-38-3	95



Data Path : Z:\SVOASRV\HPCHEM1\BNA M\DATA\BM051920\  
 Data File : BM026030.D  
 Acq On : 19 May 2020 23:16  
 Operator : MA/SJ  
 Sample : L2681-02  
 Misc :  
 ALS Vial : 19 Sample Multiplier: 1

Instrument :  
 BNA\_M  
 ClientSampled :  
 C5CA4

Quant Method : Z:\SVOASRV\HPCHEM1\BNA\_M\METHODS\SOM-EPA-BM051320MA.M  
 Quant Title : SVOA CALIBRATION

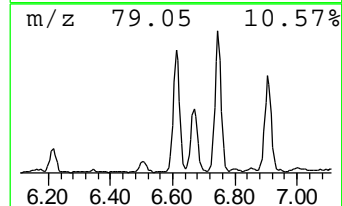
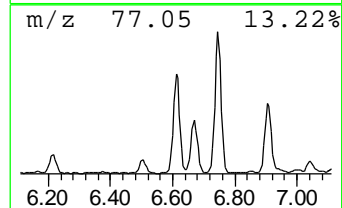
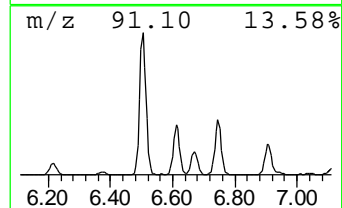
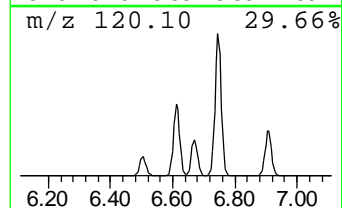
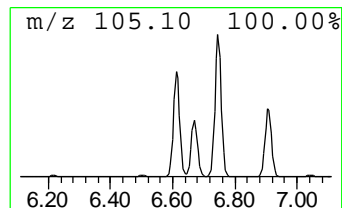
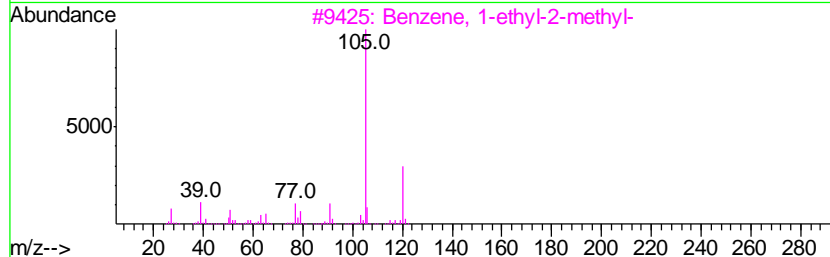
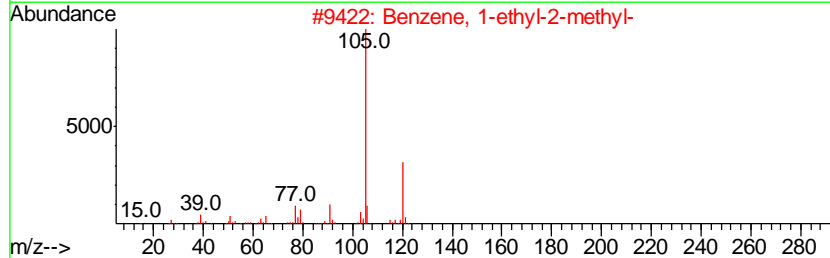
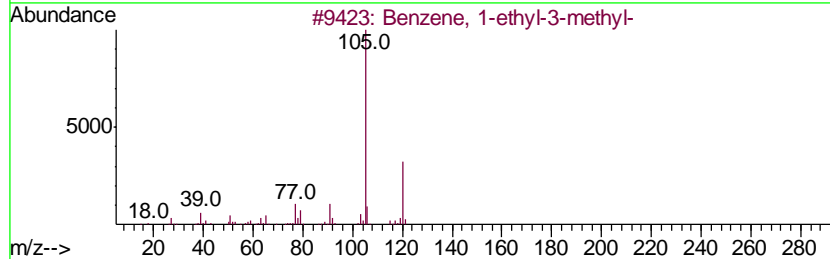
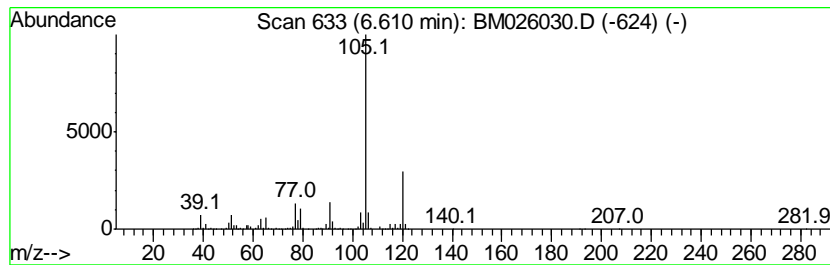
TIC Library : C:\DATABASE\NIST11.L  
 TIC Integration Parameters: LSCINT.P

\*\*\*\*\*  
 Peak Number 3 Benzene, 1-ethyl-3-methyl- Concentration Rank 26

R.T.	EstConc	Area	Relative to ISTD	R.T.
6.61	19.32 ng/ul	2184690	1,4-Dichlorobenzene-d4	7.50

Hit#	of	Tentative ID	MW	MolForm	CAS#	Qual
1	5	Benzene, 1-ethyl-3-methyl-	120	C9H12	000620-14-4	95
2		Benzene, 1-ethyl-2-methyl-	120	C9H12	000611-14-3	95
3		Benzene, 1-ethyl-2-methyl-	120	C9H12	000611-14-3	95
4		Benzene, 1-ethyl-3-methyl-	120	C9H12	000620-14-4	94
5		Benzene, 1,2,3-trimethyl-	120	C9H12	000526-73-8	91



Data Path : Z:\SVOASRV\HPCHEM1\BNA M\DATA\BM051920\  
 Data File : BM026030.D  
 Acq On : 19 May 2020 23:16  
 Operator : MA/SJ  
 Sample : L2681-02  
 Misc :  
 ALS Vial : 19 Sample Multiplier: 1

Instrument :  
 BNA\_M  
 ClientSampleID :  
 C5CA4

Quant Method : Z:\SVOASRV\HPCHEM1\BNA\_M\METHODS\SOM-EPA-BM051320MA.M  
 Quant Title : SVOA CALIBRATION

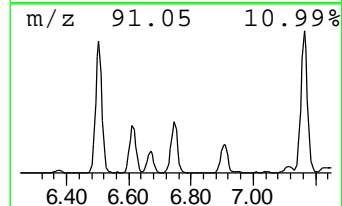
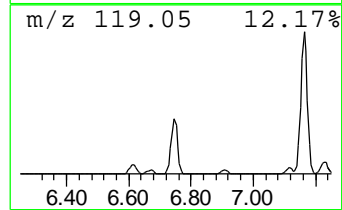
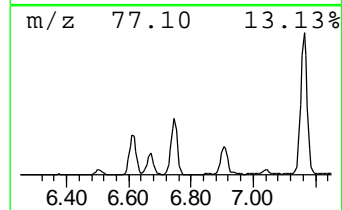
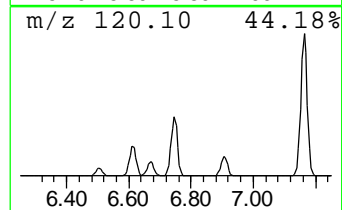
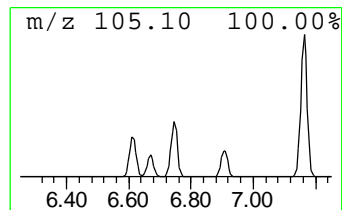
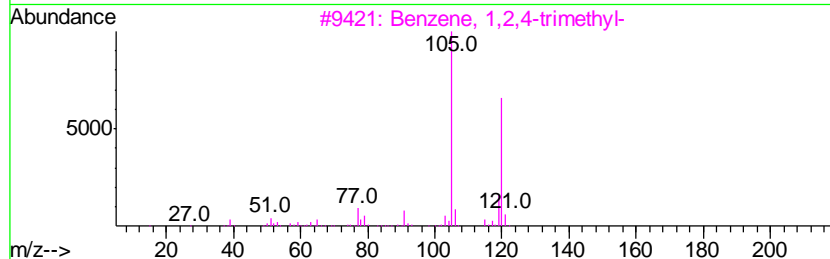
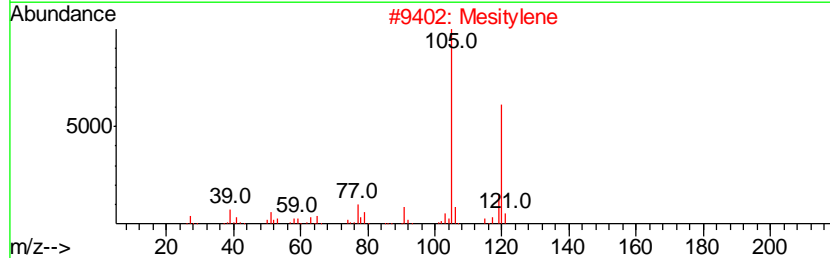
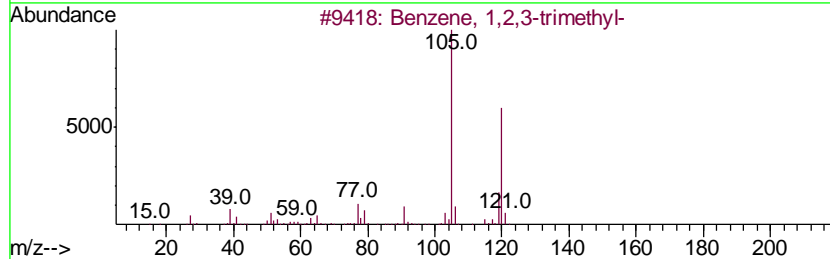
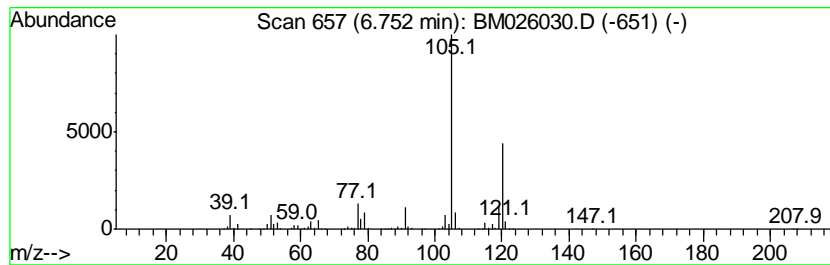
TIC Library : C:\DATABASE\NIST11.L  
 TIC Integration Parameters: LSCINT.P

\*\*\*\*\*  
 Peak Number 4 Benzene, 1,2,3-trimethyl- Concentration Rank 23

R.T.	EstConc	Area	Relative to ISTD	R.T.
6.75	21.24 ng/ul	2401950	1,4-Dichlorobenzene-d4	7.50

Hit#	of	Tentative ID	MW	MolForm	CAS#	Qual
1	5	Benzene, 1,2,3-trimethyl-	120	C9H12	000526-73-8	97
2		Mesitylene	120	C9H12	000108-67-8	95
3		Benzene, 1,2,4-trimethyl-	120	C9H12	000095-63-6	94
4		Mesitylene	120	C9H12	000108-67-8	94
5		Benzene, 1,2,3-trimethyl-	120	C9H12	000526-73-8	94





Data Path : Z:\SVOASRV\HPCHEM1\BNA M\DATA\BM051920\  
 Data File : BM026030.D  
 Acq On : 19 May 2020 23:16  
 Operator : MA/SJ  
 Sample : L2681-02  
 Misc :  
 ALS Vial : 19 Sample Multiplier: 1

Instrument :  
 BNA\_M  
 ClientSampleID :  
 C5CA4

Quant Method : Z:\SVOASRV\HPCHEM1\BNA\_M\METHODS\SOM-EPA-BM051320MA.M  
 Quant Title : SVOA CALIBRATION

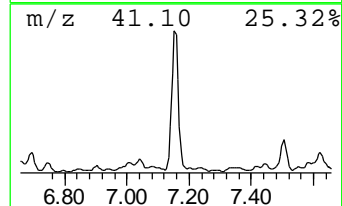
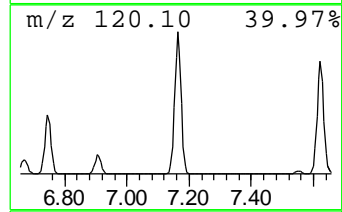
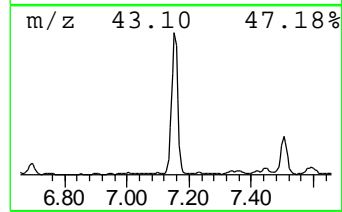
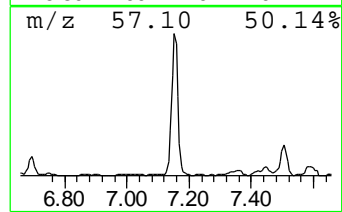
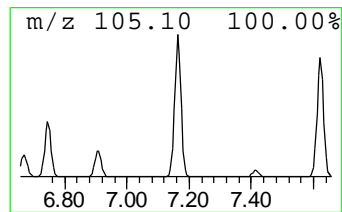
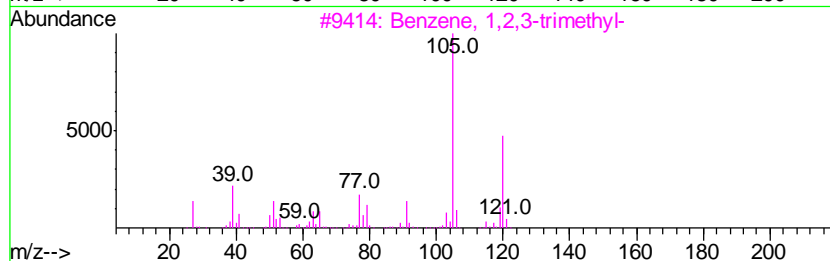
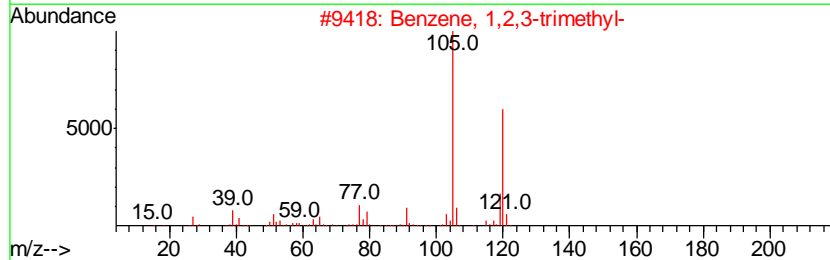
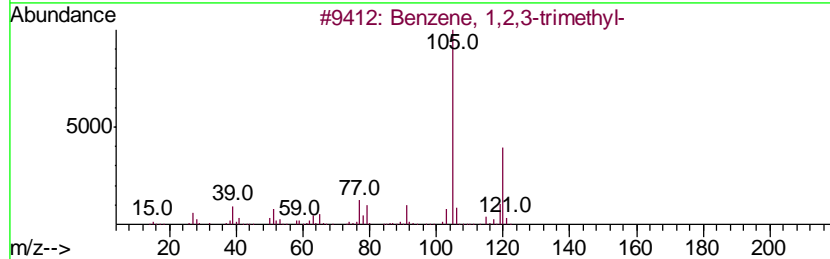
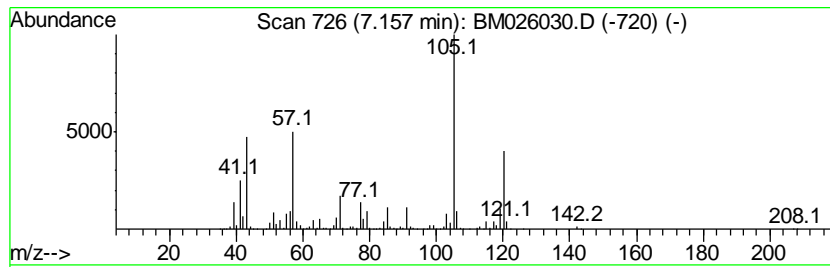
TIC Library : C:\DATABASE\NIST11.L  
 TIC Integration Parameters: LSCINT.P

\*\*\*\*\*  
 Peak Number 5 Mesitylene Concentration Rank 1

R.T.	EstConc	Area	Relative to ISTD	R.T.
7.16	91.07 ng/ul	10298600	1,4-Dichlorobenzene-d4	7.50

Hit#	of	Tentative ID	MW	MolForm	CAS#	Qual
1	5	Benzene, 1,2,3-trimethyl-	120	C9H12	000526-73-8	94
2		Benzene, 1,2,3-trimethyl-	120	C9H12	000526-73-8	91
3		Benzene, 1,2,3-trimethyl-	120	C9H12	000526-73-8	91
4		Benzene, 1,2,4-trimethyl-	120	C9H12	000095-63-6	91
5		Mesitylene	120	C9H12	000108-67-8	87



Data Path : Z:\SVOASRV\HPCHEM1\BNA M\DATA\BM051920\  
 Data File : BM026030.D  
 Acq On : 19 May 2020 23:16  
 Operator : MA/SJ  
 Sample : L2681-02  
 Misc :  
 ALS Vial : 19 Sample Multiplier: 1

Instrument :  
 BNA\_M  
 ClientSampleId :  
 C5CA4

Quant Method : Z:\SVOASRV\HPCHEM1\BNA\_M\METHODS\SOM-EPA-BM051320MA.M  
 Quant Title : SVOA CALIBRATION

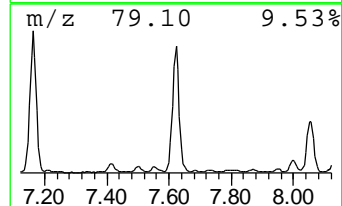
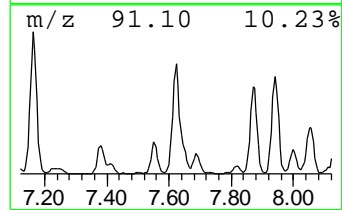
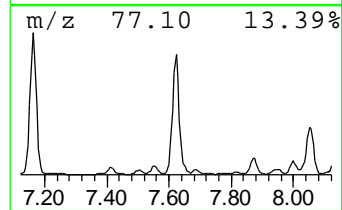
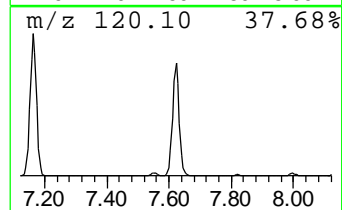
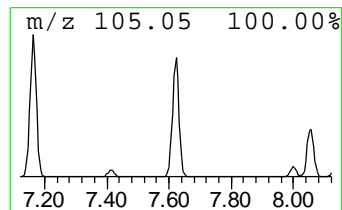
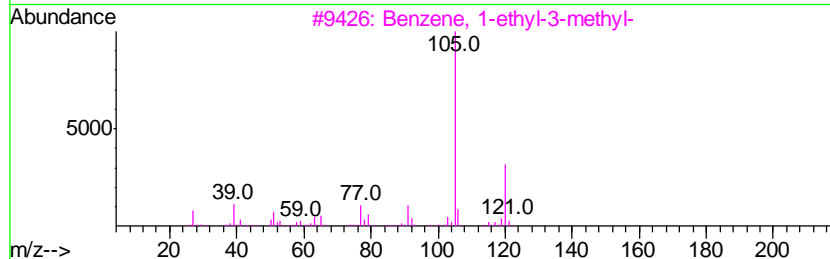
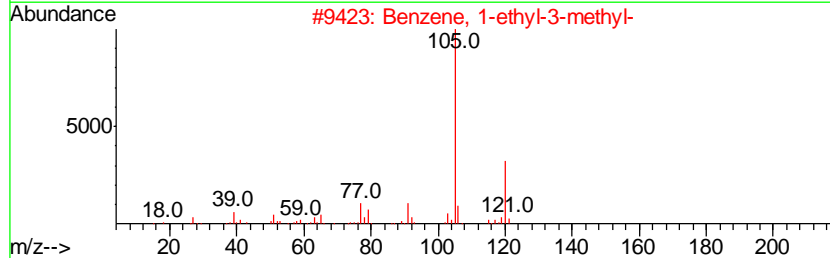
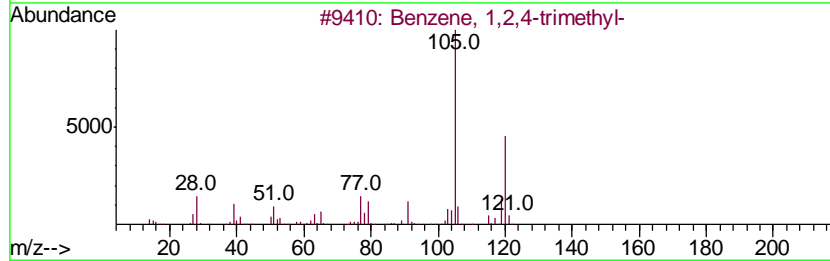
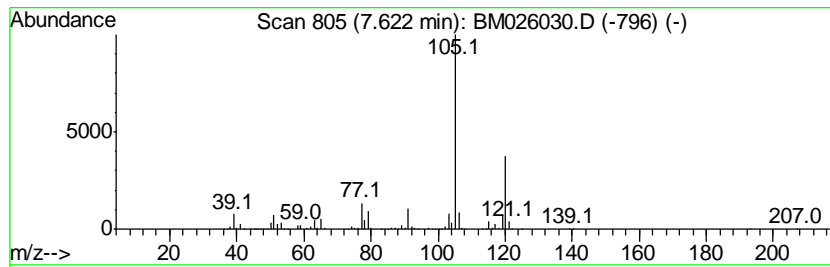
TIC Library : C:\DATABASE\NIST11.L  
 TIC Integration Parameters: LSCINT.P

\*\*\*\*\*  
 Peak Number 6 Benzene, 1,2,4-trimethyl- Concentration Rank 6

R.T.	EstConc	Area	Relative to ISTD	R.T.
7.62	48.99 ng/ul	5540040	1,4-Dichlorobenzene-d4	7.50

Hit#	of	Tentative ID	MW	MolForm	CAS#	Qual
1	5	Benzene, 1,2,4-trimethyl-	120	C9H12	000095-63-6	94
2		Benzene, 1-ethyl-3-methyl-	120	C9H12	000620-14-4	94
3		Benzene, 1-ethyl-3-methyl-	120	C9H12	000620-14-4	94
4		Benzene, 1,2,3-trimethyl-	120	C9H12	000526-73-8	94
5		Benzene, 1,2,3-trimethyl-	120	C9H12	000526-73-8	91



Data Path : Z:\SVOASRV\HPCHEM1\BNA M\DATA\BM051920\  
 Data File : BM026030.D  
 Acq On : 19 May 2020 23:16  
 Operator : MA/SJ  
 Sample : L2681-02  
 Misc :  
 ALS Vial : 19 Sample Multiplier: 1

Instrument :  
 BNA\_M  
 ClientSampled :  
 C5CA4

Quant Method : Z:\SVOASRV\HPCHEM1\BNA\_M\METHODS\SOM-EPA-BM051320MA.M  
 Quant Title : SVOA CALIBRATION

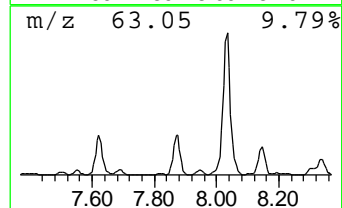
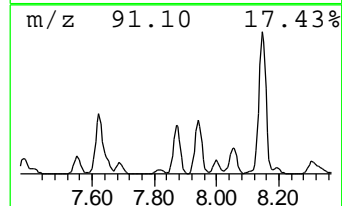
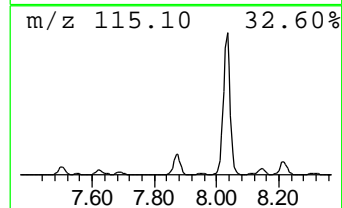
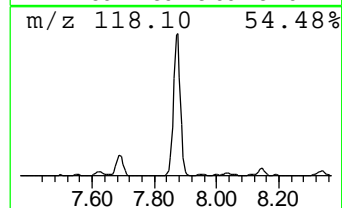
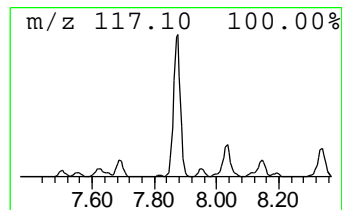
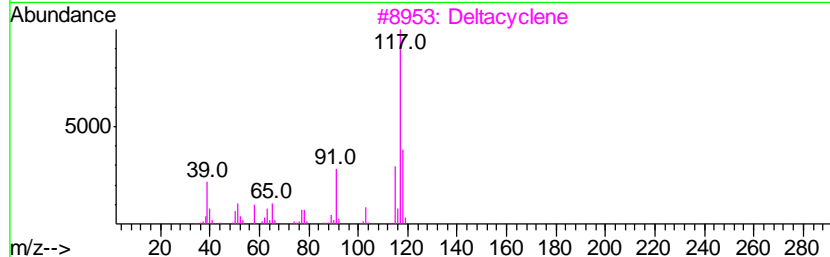
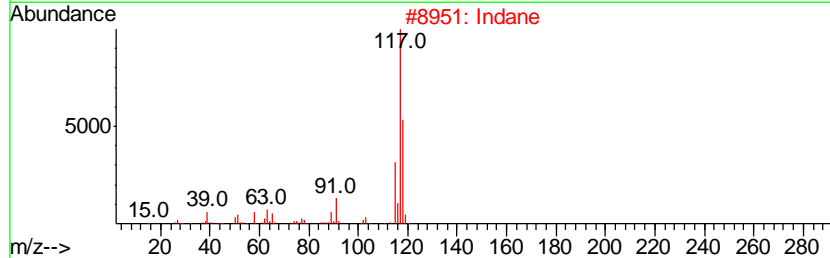
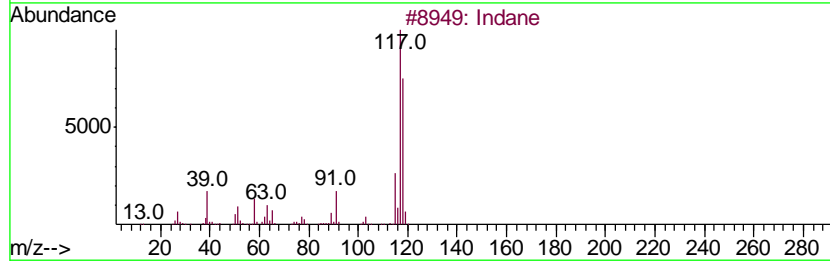
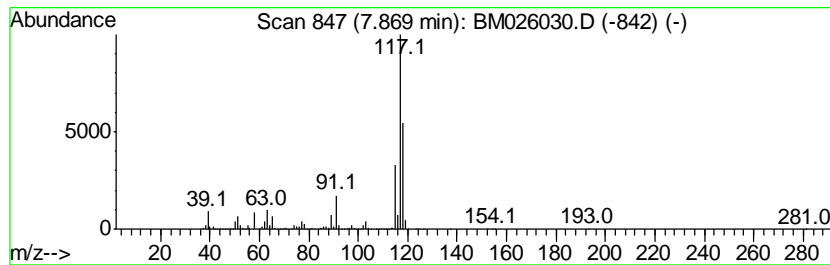
TIC Library : C:\DATABASE\NIST11.L  
 TIC Integration Parameters: LSCINT.P

\*\*\*\*\*  
 Peak Number 7 Indane Concentration Rank 18

R.T.	EstConc	Area	Relative to ISTD	R.T.
7.87	27.66 ng/ul	3127950	1,4-Dichlorobenzene-d4	7.50

Hit#	of	Tentative ID	MW	MolForm	CAS#	Qual
1	5	Indane	118	C9H10	000496-11-7	93
2		Indane	118	C9H10	000496-11-7	91
3		Deltacyclene	118	C9H10	007785-10-6	68
4		Benzene, 2-propenyl-	118	C9H10	000300-57-2	64
5		Benzene, 1-ethenyl-2-methyl-	118	C9H10	000611-15-4	60



Data Path : Z:\SVOASRV\HPCHEM1\BNA M\DATA\BM051920\  
 Data File : BM026030.D  
 Acq On : 19 May 2020 23:16  
 Operator : MA/SJ  
 Sample : L2681-02  
 Misc :  
 ALS Vial : 19 Sample Multiplier: 1

Instrument :  
 BNA\_M  
 ClientSampled :  
 C5CA4

Quant Method : Z:\SVOASRV\HPCHEM1\BNA\_M\METHODS\SOM-EPA-BM051320MA.M  
 Quant Title : SVOA CALIBRATION

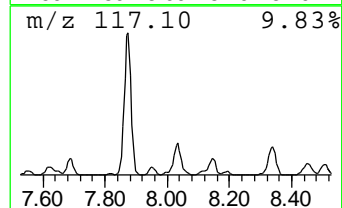
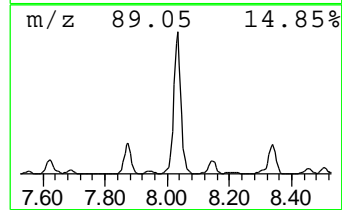
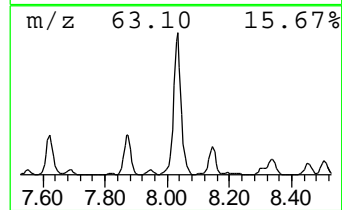
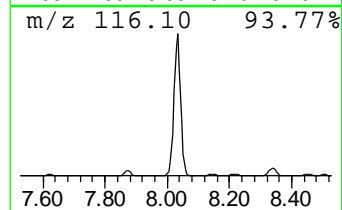
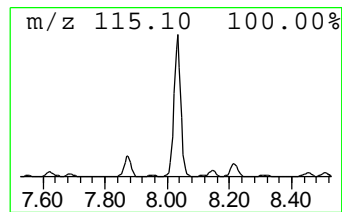
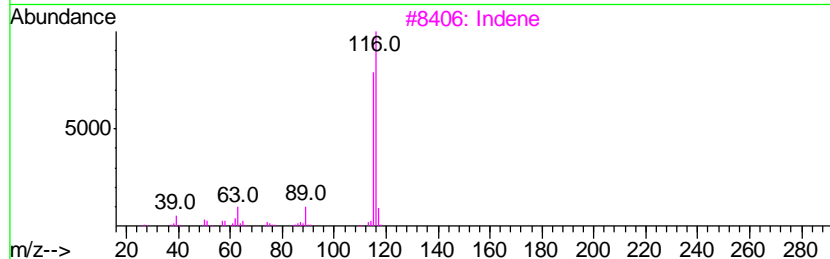
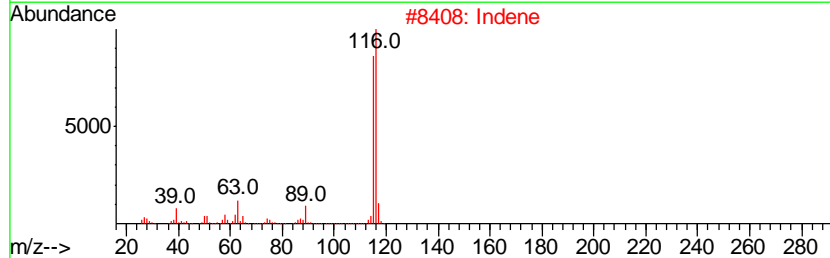
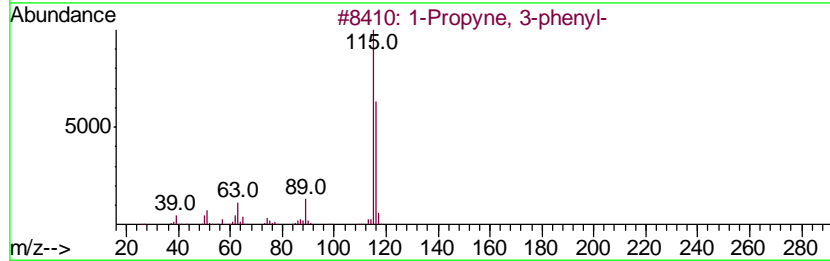
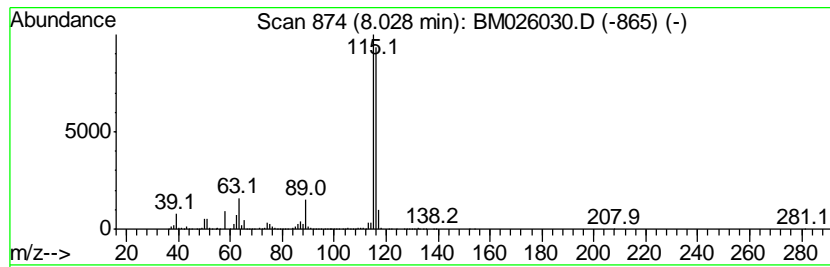
TIC Library : C:\DATABASE\NIST11.L  
 TIC Integration Parameters: LSCINT.P

\*\*\*\*\*  
 Peak Number 8 1-Propyne, 3-phenyl- Concentration Rank 2

R.T.	EstConc	Area	Relative to ISTD	R.T.
8.03	89.41 ng/ul	10110900	1,4-Dichlorobenzene-d4	7.50

Hit#	of	Tentative ID	MW	MolForm	CAS#	Qual
1	5	1-Propyne, 3-phenyl-	116	C9H8	010147-11-2	95
2		Indene	116	C9H8	000095-13-6	94
3		Indene	116	C9H8	000095-13-6	94
4		Benzene, 1,2-propadienyl-	116	C9H8	002327-99-3	91
5		Benzene, 1-propynyl-	116	C9H8	000673-32-5	91



Data Path : Z:\SVOASRV\HPCHEM1\BNA M\DATA\BM051920\  
 Data File : BM026030.D  
 Acq On : 19 May 2020 23:16  
 Operator : MA/SJ  
 Sample : L2681-02  
 Misc :  
 ALS Vial : 19 Sample Multiplier: 1

Instrument :  
 BNA\_M  
 ClientSampleId :  
 C5CA4

Quant Method : Z:\SVOASRV\HPCHEM1\BNA\_M\METHODS\SOM-EPA-BM051320MA.M  
 Quant Title : SVOA CALIBRATION

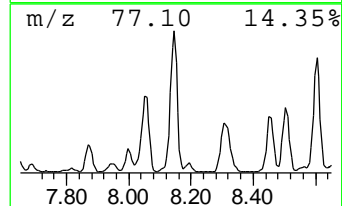
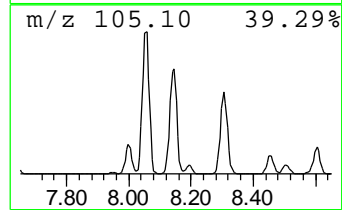
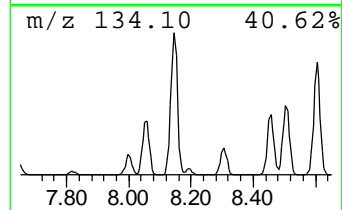
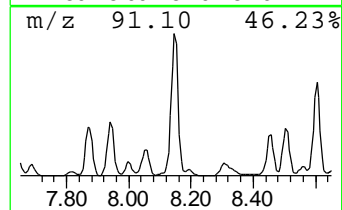
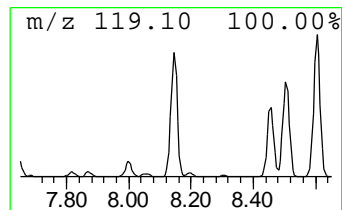
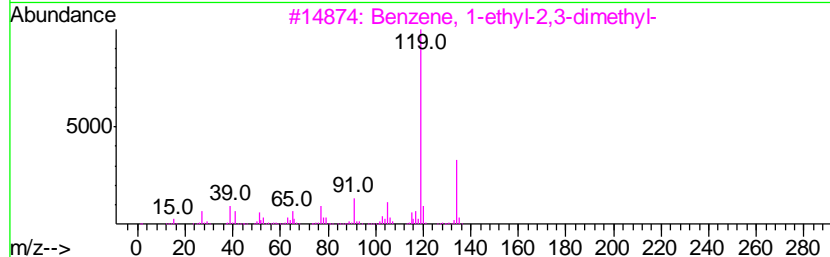
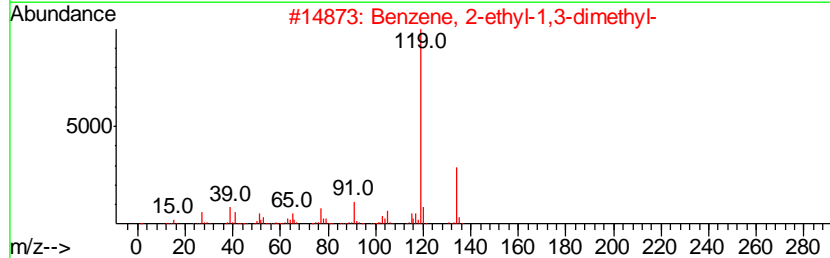
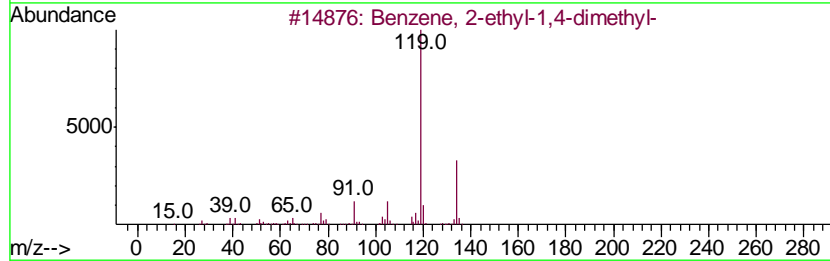
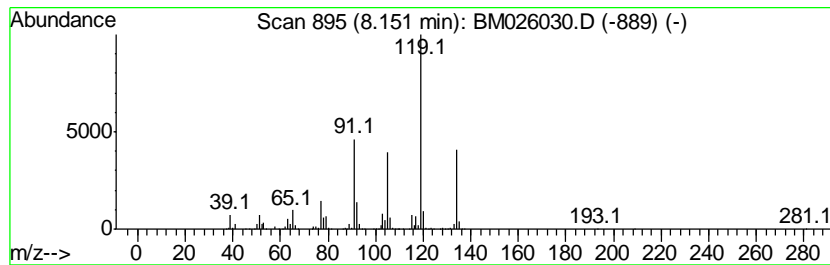
TIC Library : C:\DATABASE\NIST11.L  
 TIC Integration Parameters: LSCINT.P

\*\*\*\*\*  
 Peak Number 9 Benzene, 2-ethyl-1,3-dimethyl- Concentration Rank 13

R.T.	EstConc	Area	Relative to ISTD	R.T.
8.15	33.84 ng/ul	3827040	1,4-Dichlorobenzene-d4	7.50

Hit#	of	Tentative ID	MW	MolForm	CAS#	Qual
1	5	Benzene, 2-ethyl-1,4-dimethyl-	134	C10H14	001758-88-9	95
2		Benzene, 2-ethyl-1,3-dimethyl-	134	C10H14	002870-04-4	91
3		Benzene, 1-ethyl-2,3-dimethyl-	134	C10H14	000933-98-2	91
4		Benzene, 1-ethyl-3,5-dimethyl-	134	C10H14	000934-74-7	91
5		Benzene, 1,2,3,4-tetramethyl-	134	C10H14	000488-23-3	91



Data Path : Z:\SVOASRV\HPCHEM1\BNA M\DATA\BM051920\  
 Data File : BM026030.D  
 Acq On : 19 May 2020 23:16  
 Operator : MA/SJ  
 Sample : L2681-02  
 Misc :  
 ALS Vial : 19 Sample Multiplier: 1

Instrument :  
 BNA\_M  
 ClientSampleID :  
 C5CA4

Quant Method : Z:\SVOASRV\HPCHEM1\BNA\_M\METHODS\SOM-EPA-BM051320MA.M  
 Quant Title : SVOA CALIBRATION

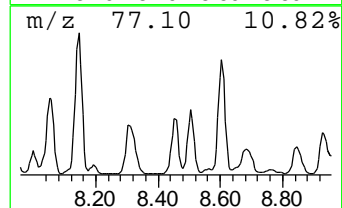
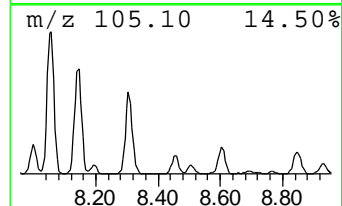
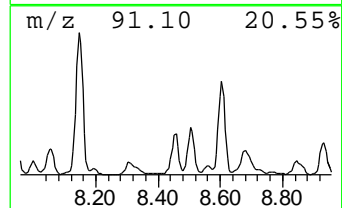
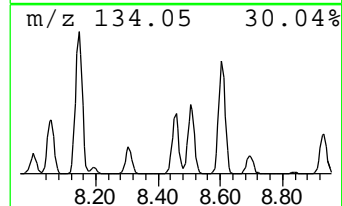
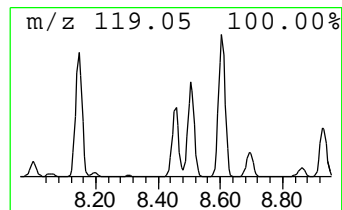
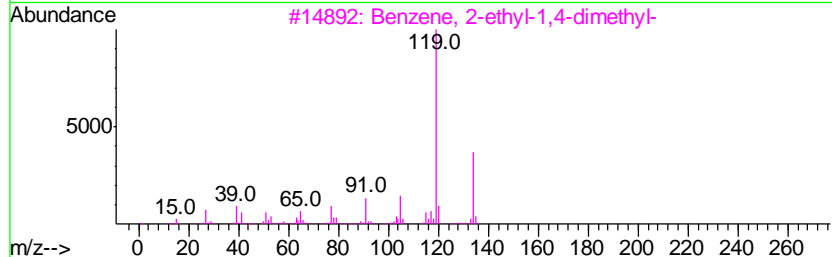
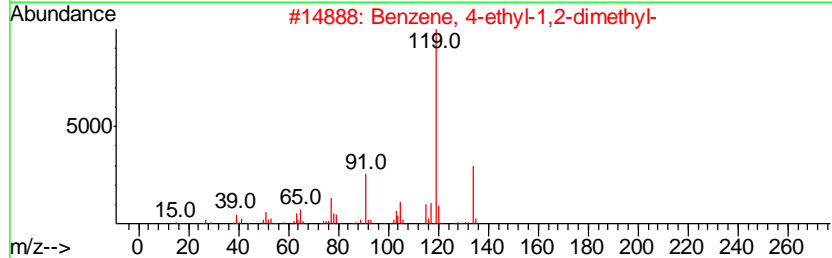
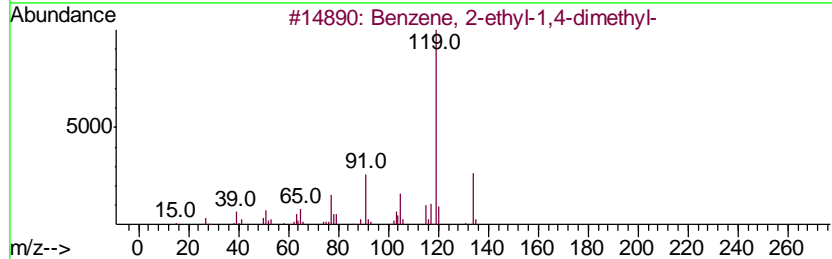
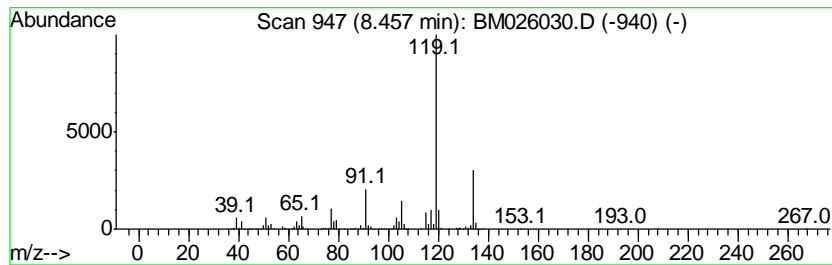
TIC Library : C:\DATABASE\NIST11.L  
 TIC Integration Parameters: LSCINT.P

\*\*\*\*\*  
 Peak Number 10 Benzene, 2-ethyl-1,4-dimethyl- Concentration Rank 30

R.T.	EstConc	Area	Relative to ISTD	R.T.
8.46	17.99 ng/ul	2034960	1,4-Dichlorobenzene-d4	7.50

Hit#	of	Tentative ID	MW	MolForm	CAS#	Qual
1	5	Benzene, 2-ethyl-1,4-dimethyl-	134	C10H14	001758-88-9	96
2		Benzene, 4-ethyl-1,2-dimethyl-	134	C10H14	000934-80-5	96
3		Benzene, 2-ethyl-1,4-dimethyl-	134	C10H14	001758-88-9	95
4		p-Cymene	134	C10H14	000099-87-6	95
5		o-Cymene	134	C10H14	000527-84-4	95



Data Path : Z:\SVOASRV\HPCHEM1\BNA M\DATA\BM051920\  
 Data File : BM026030.D  
 Acq On : 19 May 2020 23:16  
 Operator : MA/SJ  
 Sample : L2681-02  
 Misc :  
 ALS Vial : 19 Sample Multiplier: 1

Instrument :  
 BNA\_M  
 ClientSampleID :  
 C5CA4

Quant Method : Z:\SVOASRV\HPCHEM1\BNA\_M\METHODS\SOM-EPA-BM051320MA.M  
 Quant Title : SVOA CALIBRATION

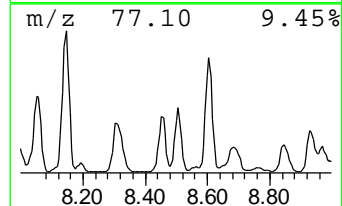
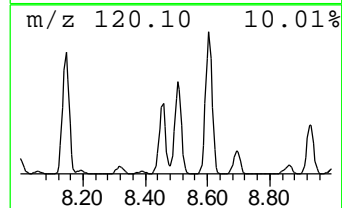
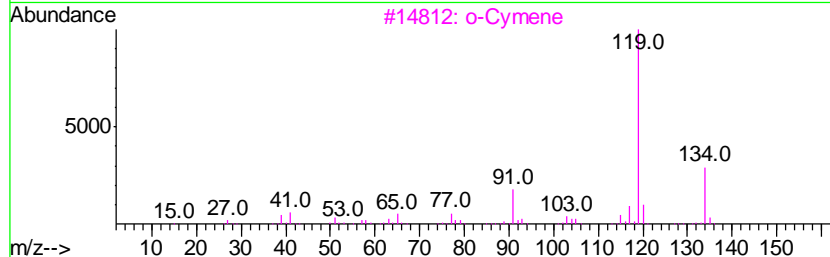
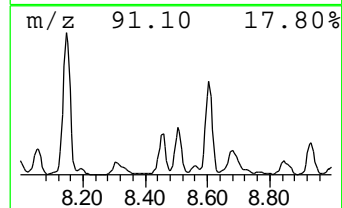
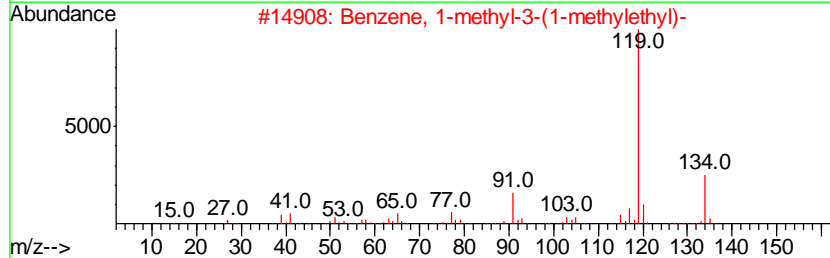
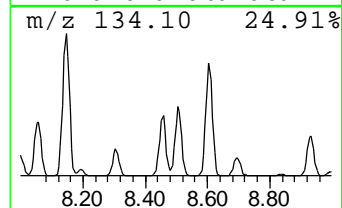
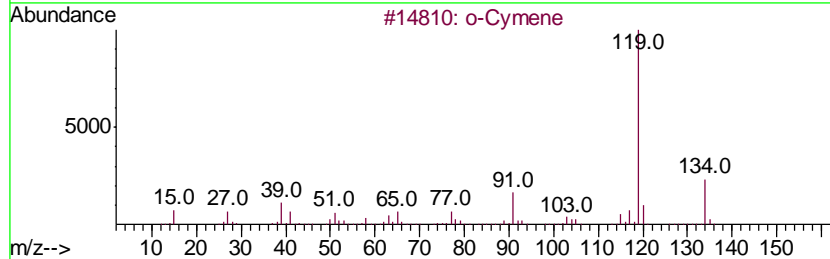
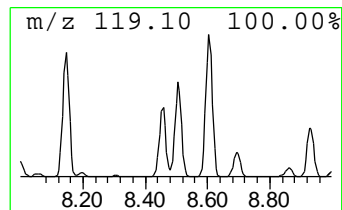
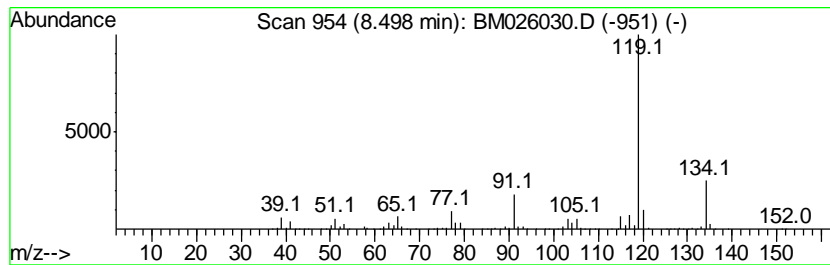
TIC Library : C:\DATABASE\NIST11.L  
 TIC Integration Parameters: LSCINT.P

\*\*\*\*\*  
 Peak Number 11 o-Cymene Concentration Rank 25

R.T.	EstConc	Area	Relative to ISTD	R.T.
8.50	19.54 ng/ul	2210090	1,4-Dichlorobenzene-d4	7.50

Hit#	of	Tentative ID	MW	MolForm	CAS#	Qual
1	5	o-Cymene	134	C10H14	000527-84-4	97
2		Benzene, 1-methyl-3-(1-methyleth...	134	C10H14	000535-77-3	97
3		o-Cymene	134	C10H14	000527-84-4	97
4		o-Cymene	134	C10H14	000527-84-4	97
5		p-Cymene	134	C10H14	000099-87-6	97



Data Path : Z:\SVOASRV\HPCHEM1\BNA M\DATA\BM051920\  
 Data File : BM026030.D  
 Acq On : 19 May 2020 23:16  
 Operator : MA/SJ  
 Sample : L2681-02  
 Misc :  
 ALS Vial : 19 Sample Multiplier: 1

Instrument :  
 BNA\_M  
 ClientSampleID :  
 C5CA4

Quant Method : Z:\SVOASRV\HPCHEM1\BNA\_M\METHODS\SOM-EPA-BM051320MA.M  
 Quant Title : SVOA CALIBRATION

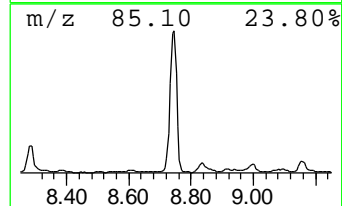
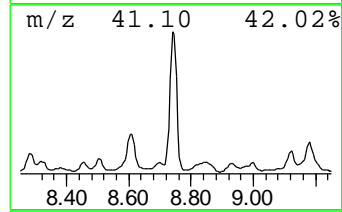
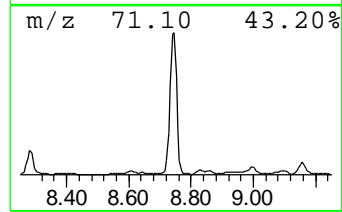
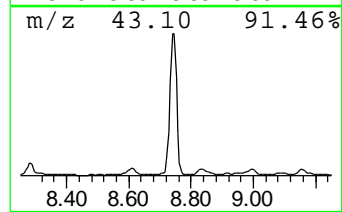
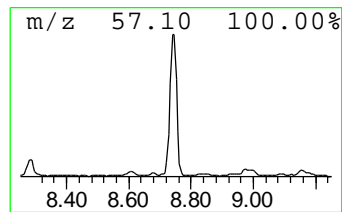
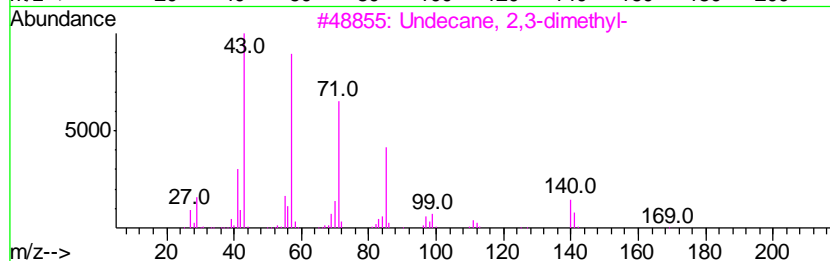
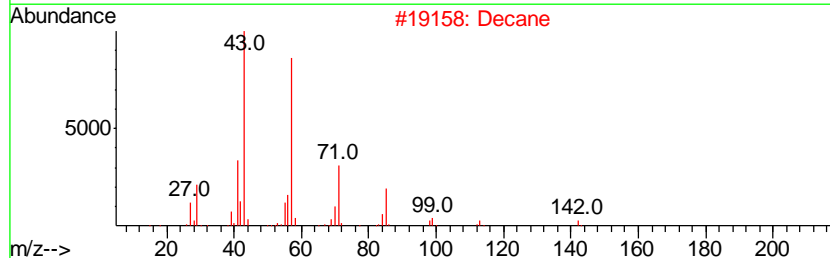
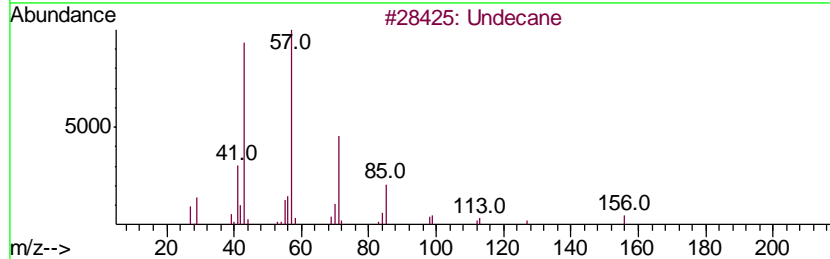
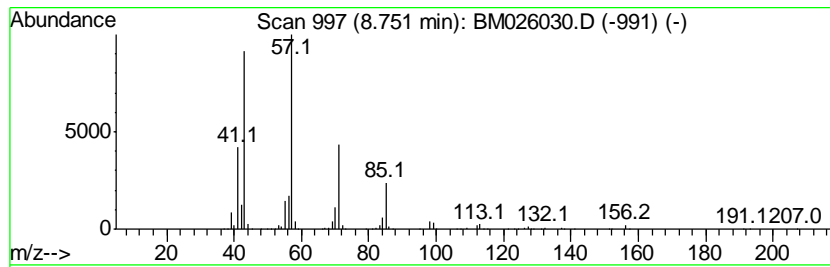
TIC Library : C:\DATABASE\NIST11.L  
 TIC Integration Parameters: LSCINT.P

\*\*\*\*\*  
 Peak Number 12 (DEL) Alkane: Straight-Chai... Concentration Rank 11

R.T.	EstConc	Area	Relative to ISTD	R.T.
8.75	36.60 ng/ul	4139390	1,4-Dichlorobenzene-d4	7.50

Hit#	of	Tentative ID	MW	MolForm	CAS#	Qual
1	5	Undecane	156	C11H24	001120-21-4	94
2		Decane	142	C10H22	000124-18-5	83
3		Undecane, 2,3-dimethyl-	184	C13H28	017312-77-5	78
4		Tridecane	184	C13H28	000629-50-5	78
5		Tridecane	184	C13H28	000629-50-5	78





Data Path : Z:\SVOASRV\HPCHEM1\BNA M\DATA\BM051920\  
 Data File : BM026030.D  
 Acq On : 19 May 2020 23:16  
 Operator : MA/SJ  
 Sample : L2681-02  
 Misc :  
 ALS Vial : 19 Sample Multiplier: 1

Instrument :  
 BNA\_M  
 ClientSampleID :  
 C5CA4

Quant Method : Z:\SVOASRV\HPCHEM1\BNA\_M\METHODS\SOM-EPA-BM051320MA.M  
 Quant Title : SVOA CALIBRATION

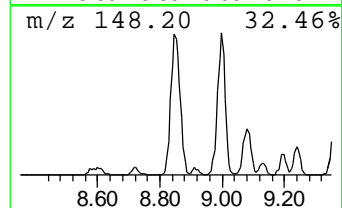
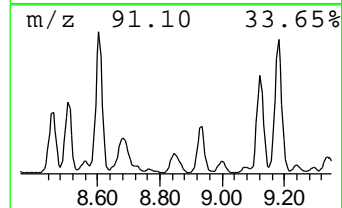
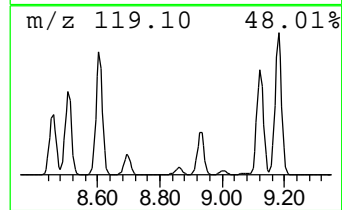
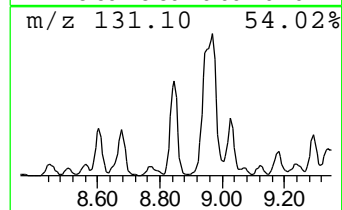
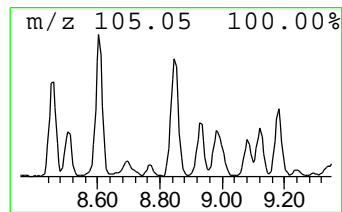
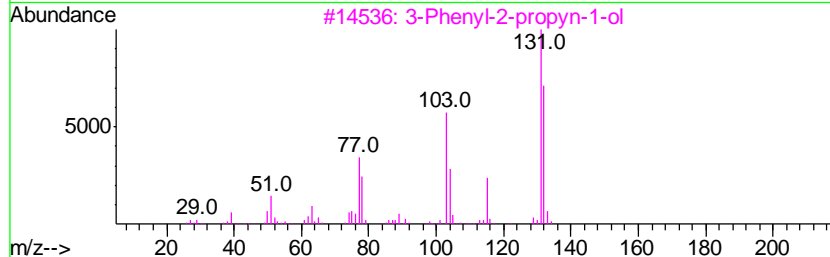
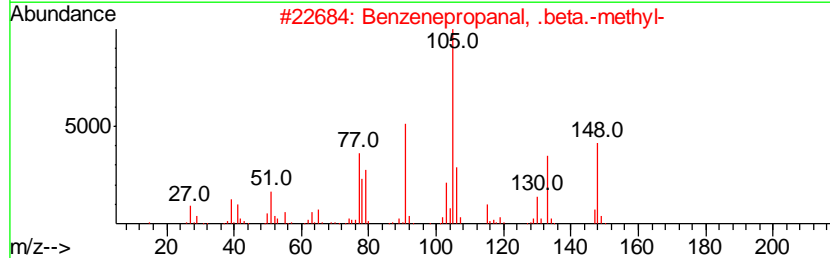
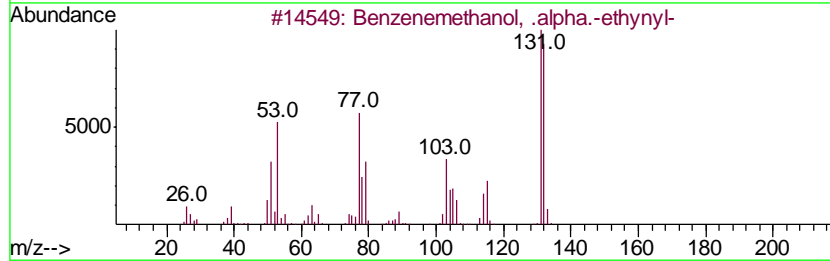
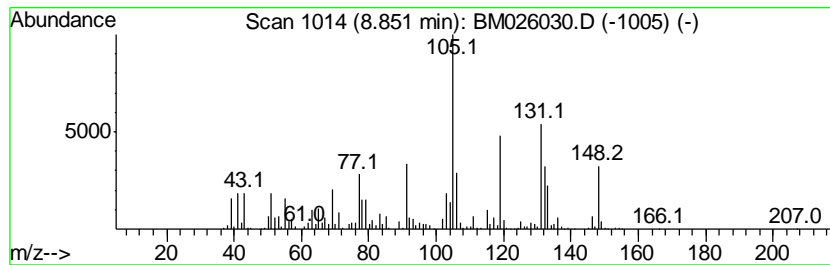
TIC Library : C:\DATABASE\NIST11.L  
 TIC Integration Parameters: LSCINT.P

\*\*\*\*\*  
 Peak Number 13 unknown-01 Concentration Rank 36

R.T.	EstConc	Area	Relative to ISTD	R.T.
8.85	15.64 ng/ul	1769040	1,4-Dichlorobenzene-d4	7.50

Hit#	of	Tentative ID	MW	MolForm	CAS#	Qual
1	5	Benzenemethanol, .alpha.-ethynyl-	132	C9H8O	004187-87-5	49
2		Benzeneopropanal, .beta.-methyl-	148	C10H12O	016251-77-7	46
3		3-Phenyl-2-propyn-1-ol	132	C9H8O	001504-58-1	45
4		3-Phenyl-2-propyn-1-ol	132	C9H8O	001504-58-1	43
5		Cinnamaldehyde, (E)-	132	C9H8O	014371-10-9	43



Data Path : Z:\SVOASRV\HPCHEM1\BNA M\DATA\BM051920\  
 Data File : BM026030.D  
 Acq On : 19 May 2020 23:16  
 Operator : MA/SJ  
 Sample : L2681-02  
 Misc :  
 ALS Vial : 19 Sample Multiplier: 1

Instrument :  
 BNA\_M  
 ClientSampled :  
 C5CA4

Quant Method : Z:\SVOASRV\HPCHEM1\BNA\_M\METHODS\SOM-EPA-BM051320MA.M  
 Quant Title : SVOA CALIBRATION

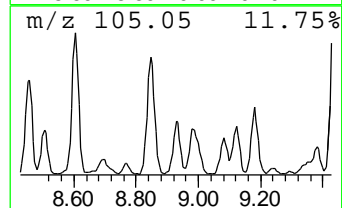
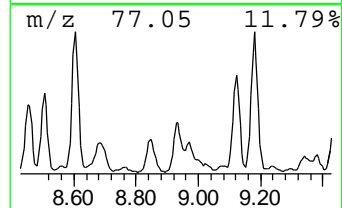
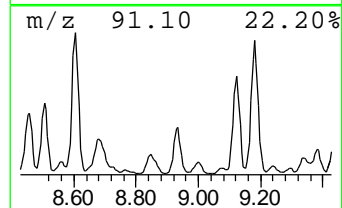
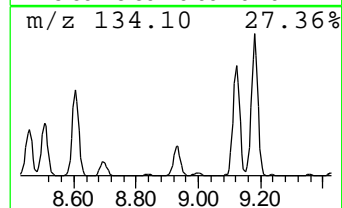
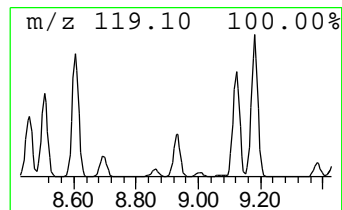
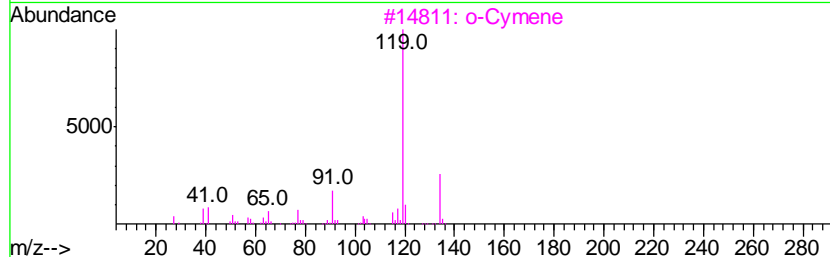
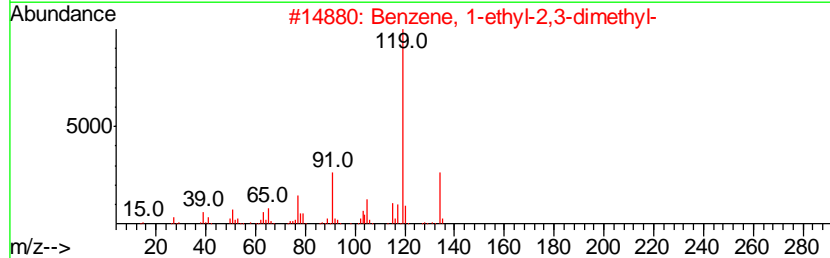
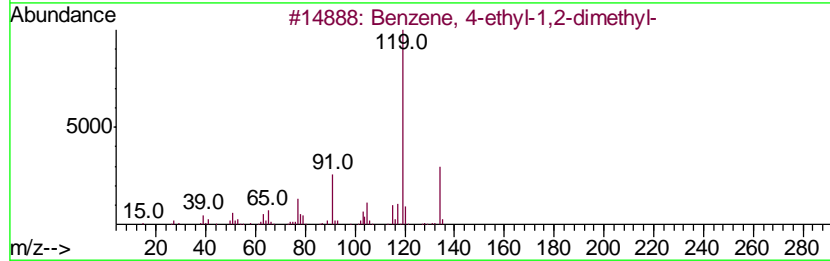
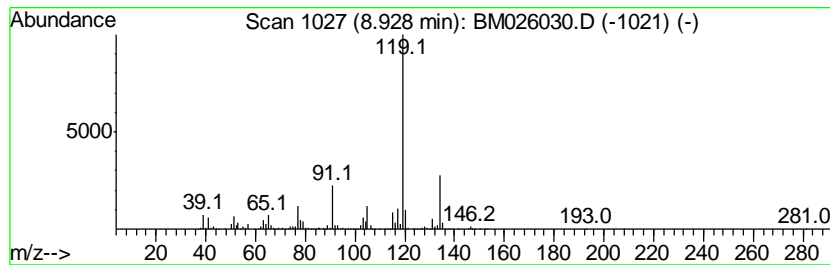
TIC Library : C:\DATABASE\NIST11.L  
 TIC Integration Parameters: LSCINT.P

\*\*\*\*\*  
 Peak Number 14 Benzene, 4-ethyl-1,2-dimethyl- Concentration Rank 53

R.T.	EstConc	Area	Relative to ISTD	R.T.
8.93	8.19 ng/ul	1936000	Naphthalene-d8	10.27

Hit#	of	Tentative ID	MW	MolForm	CAS#	Qual
1	5	Benzene, 4-ethyl-1,2-dimethyl-	134	C10H14	000934-80-5	96
2		Benzene, 1-ethyl-2,3-dimethyl-	134	C10H14	000933-98-2	96
3		o-Cymene	134	C10H14	000527-84-4	95
4		Benzene, 2-ethyl-1,4-dimethyl-	134	C10H14	001758-88-9	95
5		p-Cymene	134	C10H14	000099-87-6	94



Data Path : Z:\SVOASRV\HPCHEM1\BNA M\DATA\BM051920\  
 Data File : BM026030.D  
 Acq On : 19 May 2020 23:16  
 Operator : MA/SJ  
 Sample : L2681-02  
 Misc :  
 ALS Vial : 19 Sample Multiplier: 1

Instrument :  
 BNA\_M  
 ClientSampled :  
 C5CA4

Quant Method : Z:\SVOASRV\HPCHEM1\BNA\_M\METHODS\SOM-EPA-BM051320MA.M  
 Quant Title : SVOA CALIBRATION

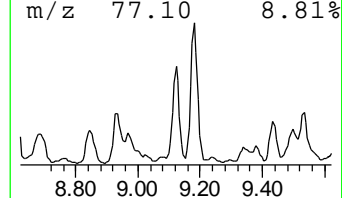
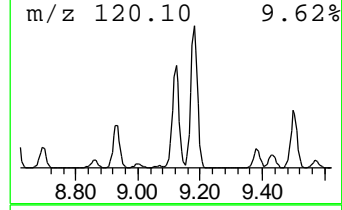
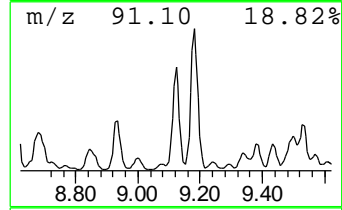
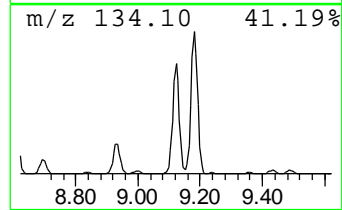
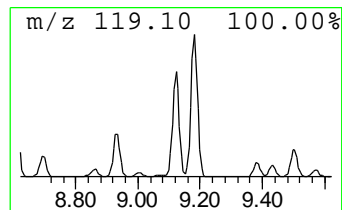
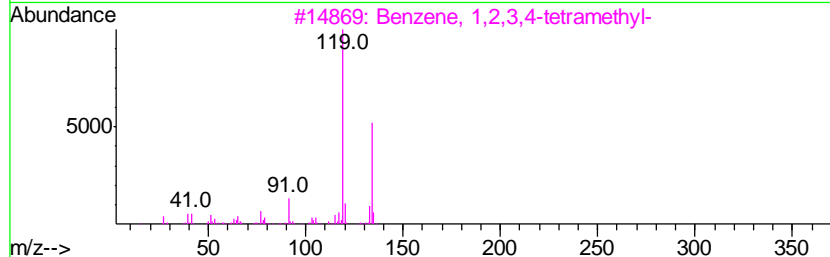
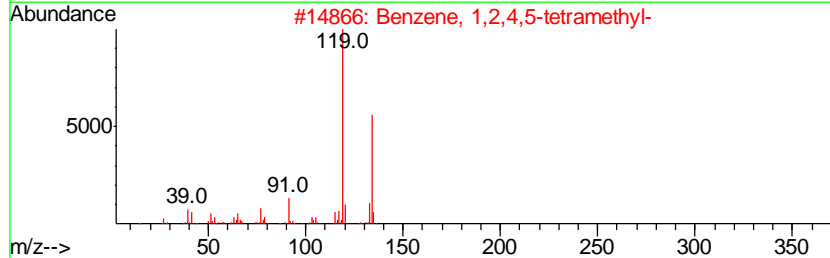
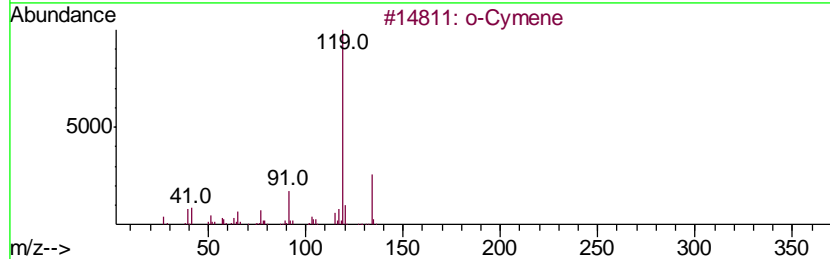
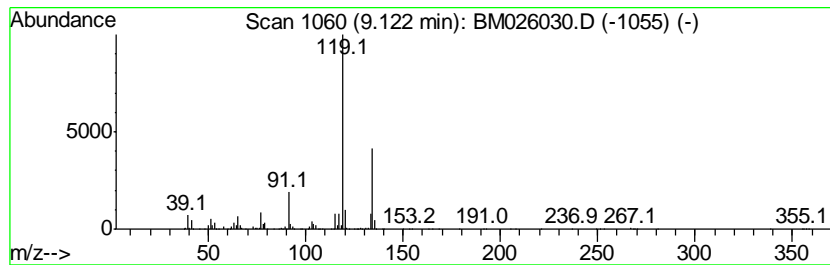
TIC Library : C:\DATABASE\NIST11.L  
 TIC Integration Parameters: LSCINT.P

\*\*\*\*\*  
 Peak Number 15 Benzene, 1,2,4,5-tetramethyl- Concentration Rank 43

R.T.	EstConc	Area	Relative to ISTD	R.T.
9.12	13.01 ng/ul	3074300	Naphthalene-d8	10.27

Hit#	of	Tentative ID	MW	MolForm	CAS#	Qual
1	5	o-Cymene	134	C10H14	000527-84-4	95
2		Benzene, 1,2,4,5-tetramethyl-	134	C10H14	000095-93-2	94
3		Benzene, 1,2,3,4-tetramethyl-	134	C10H14	000488-23-3	94
4		Benzene, 2-ethyl-1,3-dimethyl-	134	C10H14	002870-04-4	94
5		1,3-Cyclopentadiene, 1,2,3,4-tet...	134	C10H14	076089-59-3	94



Data Path : Z:\SVOASRV\HPCHEM1\BNA M\DATA\BM051920\  
 Data File : BM026030.D  
 Acq On : 19 May 2020 23:16  
 Operator : MA/SJ  
 Sample : L2681-02  
 Misc :  
 ALS Vial : 19 Sample Multiplier: 1

Instrument :  
 BNA\_M  
 ClientSampleID :  
 C5CA4

Quant Method : Z:\SVOASRV\HPCHEM1\BNA\_M\METHODS\SOM-EPA-BM051320MA.M  
 Quant Title : SVOA CALIBRATION

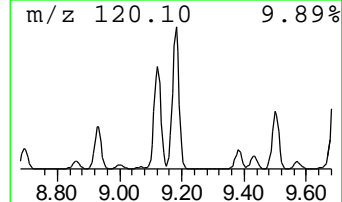
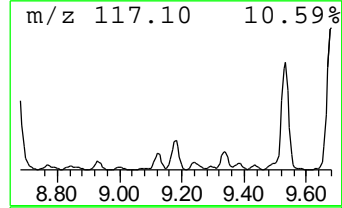
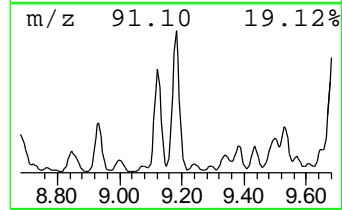
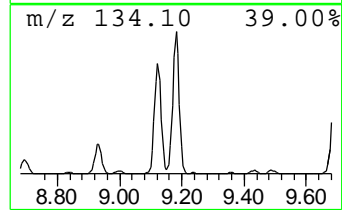
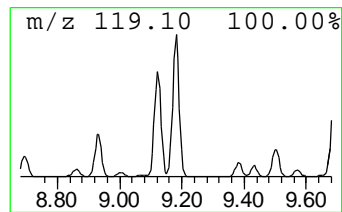
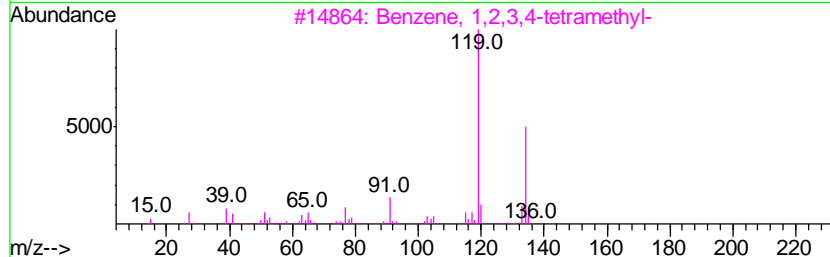
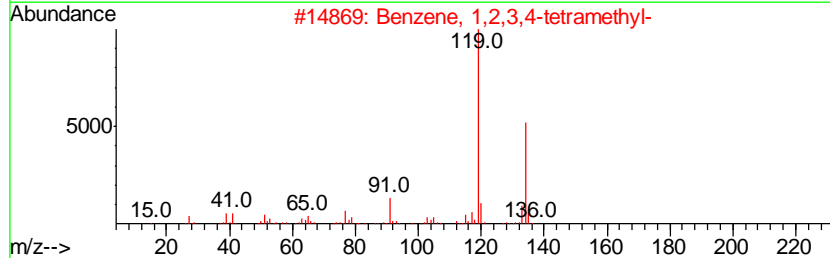
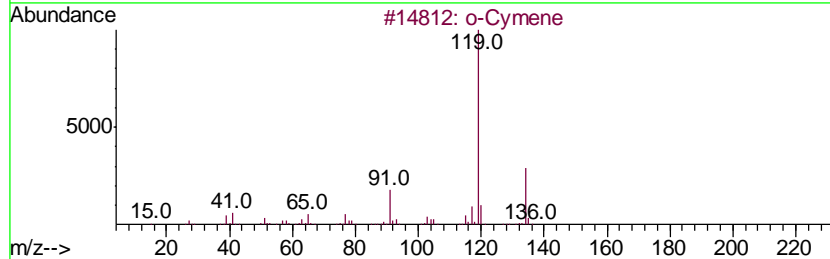
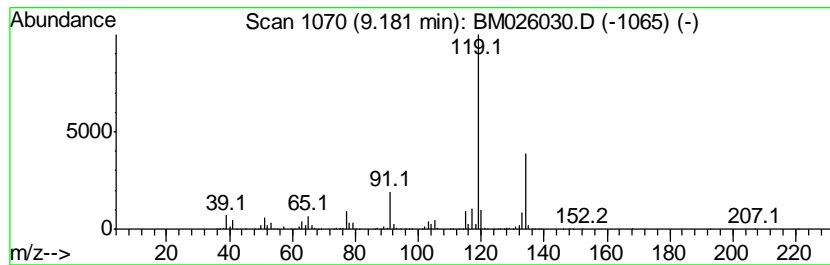
TIC Library : C:\DATABASE\NIST11.L  
 TIC Integration Parameters: LSCINT.P

\*\*\*\*\*  
 Peak Number 16 Benzene, 1,2,3,4-tetramethyl- Concentration Rank 24

R.T.	EstConc	Area	Relative to ISTD	R.T.
9.18	20.36 ng/ul	4812500	Naphthalene-d8	10.27

Hit#	of	Tentative ID	MW	MolForm	CAS#	Qual
1	5	o-Cymene	134	C10H14	000527-84-4	94
2		Benzene, 1,2,3,4-tetramethyl-	134	C10H14	000488-23-3	94
3		Benzene, 1,2,3,4-tetramethyl-	134	C10H14	000488-23-3	93
4		Benzene, 1,2,4,5-tetramethyl-	134	C10H14	000095-93-2	93
5		Benzene, 1-methyl-3-(1-methyleth...	134	C10H14	000535-77-3	91



Data Path : Z:\SVOASRV\HPCHEM1\BNA M\DATA\BM051920\  
 Data File : BM026030.D  
 Acq On : 19 May 2020 23:16  
 Operator : MA/SJ  
 Sample : L2681-02  
 Misc :  
 ALS Vial : 19 Sample Multiplier: 1

Instrument :  
 BNA\_M  
 ClientSampleID :  
 C5CA4

Quant Method : Z:\SVOASRV\HPCHEM1\BNA\_M\METHODS\SOM-EPA-BM051320MA.M  
 Quant Title : SVOA CALIBRATION

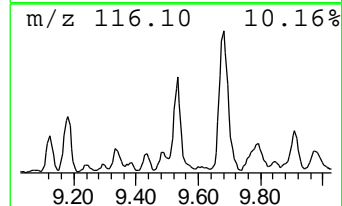
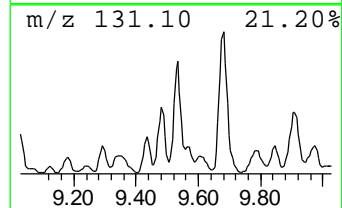
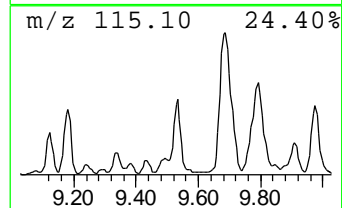
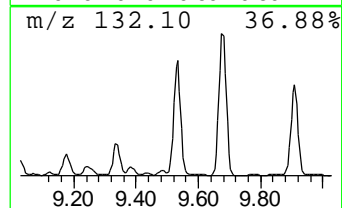
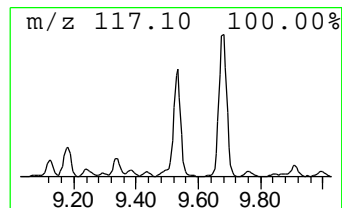
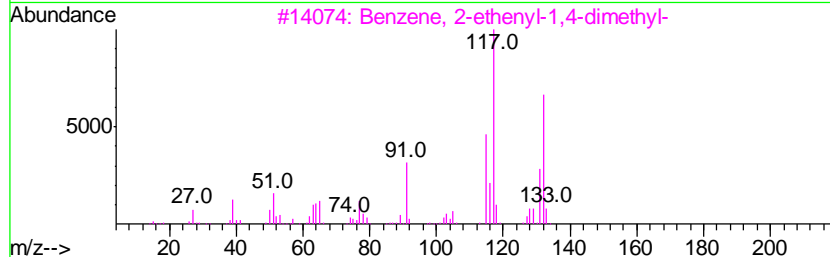
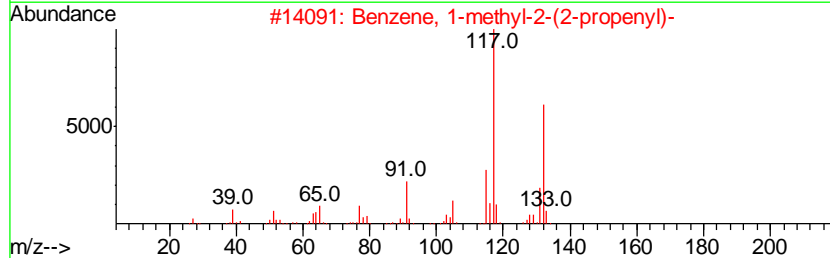
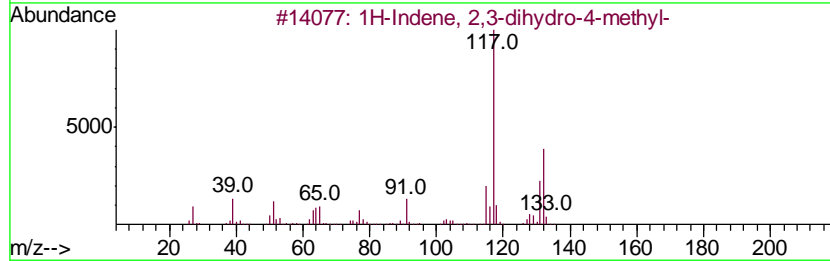
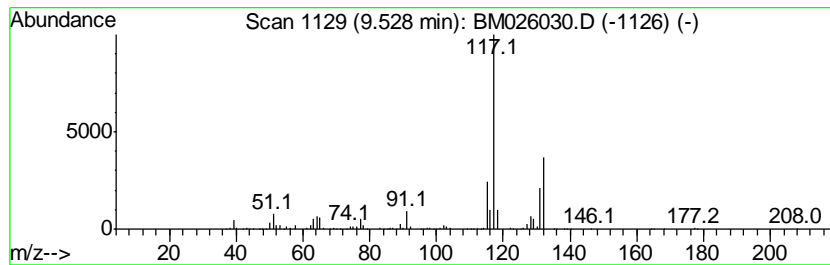
TIC Library : C:\DATABASE\NIST11.L  
 TIC Integration Parameters: LSCINT.P

\*\*\*\*\*  
 Peak Number 17 1H-Indene, 2,3-dihydro-4-me... Concentration Rank 57

R.T.	EstConc	Area	Relative to ISTD	R.T.
9.53	6.42 ng/ul	1518050	Naphthalene-d8	10.27

Hit#	of	Tentative ID	MW	MolForm	CAS#	Qual
1	5	1H-Indene, 2,3-dihydro-4-methyl-	132	C10H12	000824-22-6	90
2		Benzene, 1-methyl-2-(2-propenyl)-	132	C10H12	001587-04-8	86
3		Benzene, 2-ethenyl-1,4-dimethyl-	132	C10H12	002039-89-6	86
4		Indan, 1-methyl-	132	C10H12	000767-58-8	83
5		1H-Indene, 2,3-dihydro-2-methyl-	132	C10H12	000824-63-5	78



Data Path : Z:\SVOASRV\HPCHEM1\BNA M\DATA\BM051920\  
 Data File : BM026030.D  
 Acq On : 19 May 2020 23:16  
 Operator : MA/SJ  
 Sample : L2681-02  
 Misc :  
 ALS Vial : 19 Sample Multiplier: 1

Instrument :  
 BNA\_M  
 ClientSampleId :  
 C5CA4

Quant Method : Z:\SVOASRV\HPCHEM1\BNA\_M\METHODS\SOM-EPA-BM051320MA.M  
 Quant Title : SVOA CALIBRATION

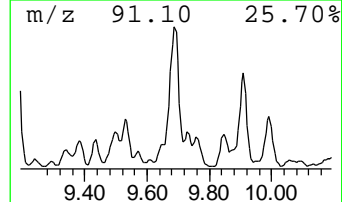
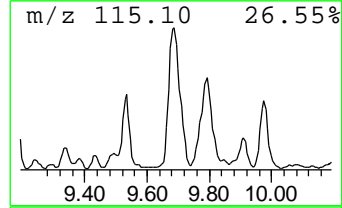
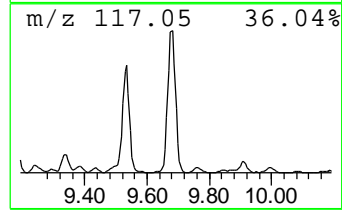
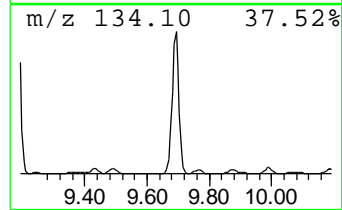
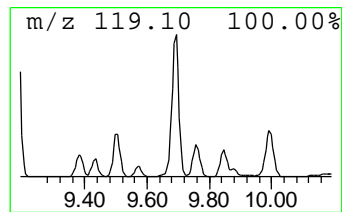
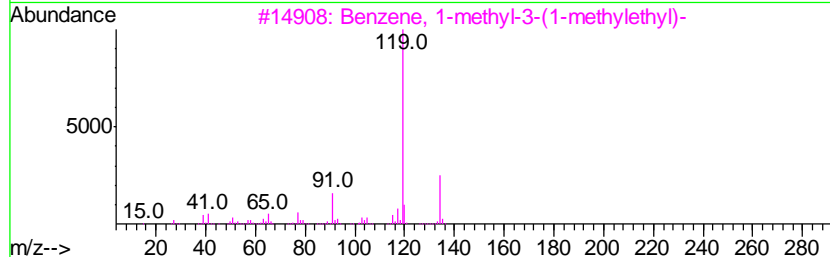
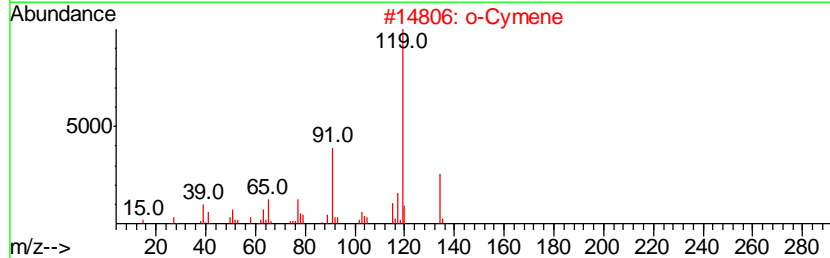
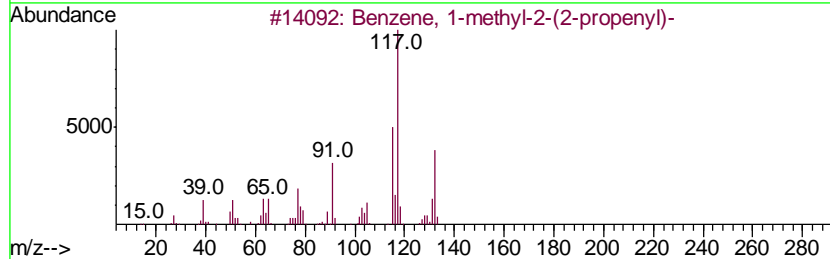
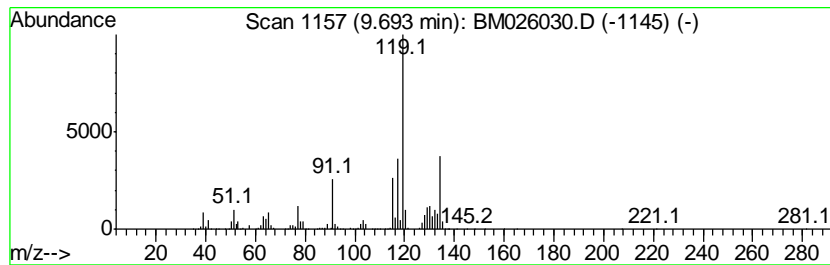
TIC Library : C:\DATABASE\NIST11.L  
 TIC Integration Parameters: LSCINT.P

\*\*\*\*\*  
 Peak Number 18 Benzene, 1-methyl-2-(2-prop... Concentration Rank 16

R.T.	EstConc	Area	Relative to ISTD	R.T.
9.69	29.02 ng/ul	6858180	Naphthalene-d8	10.27

Hit#	of	Tentative ID	MW	MolForm	CAS#	Qual
1	5	Benzene, 1-methyl-2-(2-propenyl)-	132	C10H12	001587-04-8	83
2		o-Cymene	134	C10H14	000527-84-4	55
3		Benzene, 1-methyl-3-(1-methyleth...	134	C10H14	000535-77-3	50
4		o-Cymene	134	C10H14	000527-84-4	50
5		o-Cymene	134	C10H14	000527-84-4	50



Data Path : Z:\SVOASRV\HPCHEM1\BNA M\DATA\BM051920\  
 Data File : BM026030.D  
 Acq On : 19 May 2020 23:16  
 Operator : MA/SJ  
 Sample : L2681-02  
 Misc :  
 ALS Vial : 19 Sample Multiplier: 1

Instrument :  
 BNA\_M  
 ClientSampled :  
 C5CA4

Quant Method : Z:\SVOASRV\HPCHEM1\BNA\_M\METHODS\SOM-EPA-BM051320MA.M  
 Quant Title : SVOA CALIBRATION

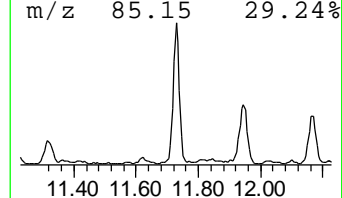
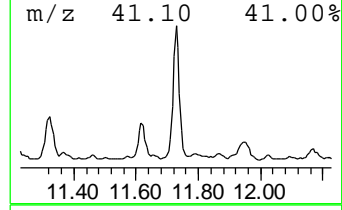
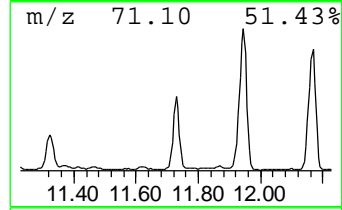
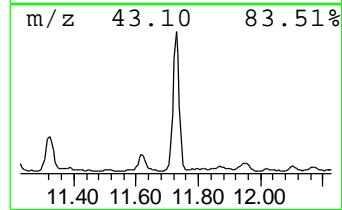
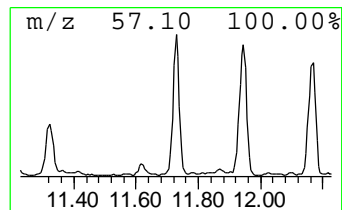
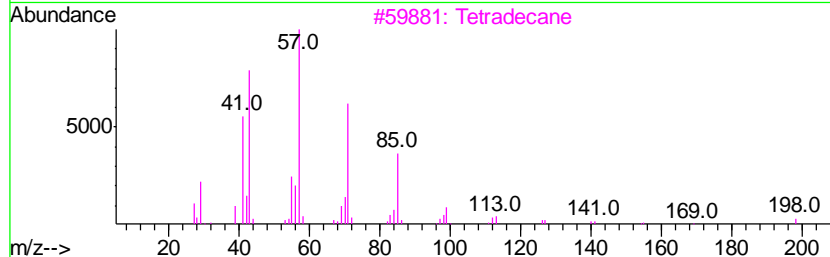
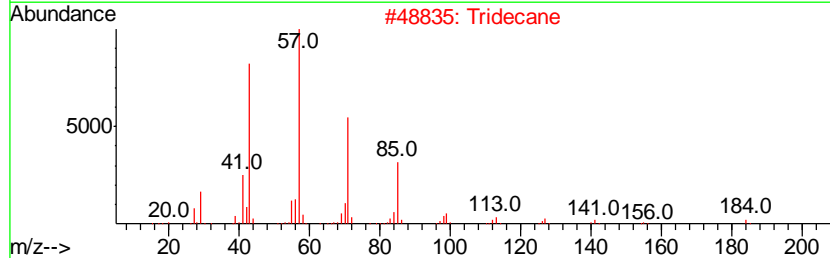
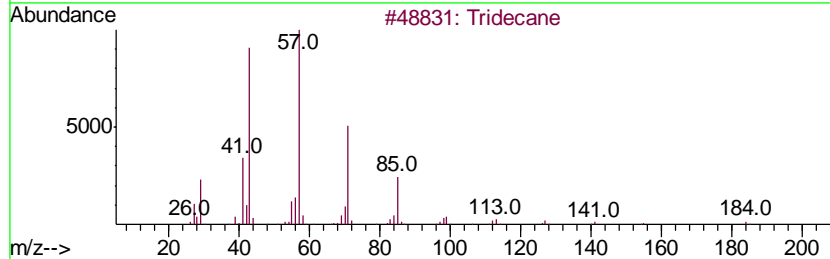
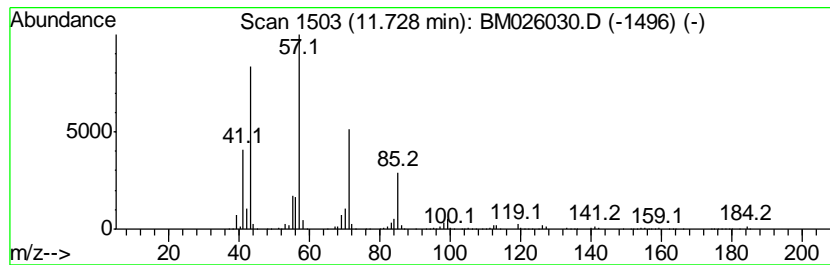
TIC Library : C:\DATABASE\NIST11.L  
 TIC Integration Parameters: LSCINT.P

\*\*\*\*\*  
 Peak Number 20 (DEL) Alkane: Straight-Chai... Concentration Rank 55

R.T.	EstConc	Area	Relative to ISTD	R.T.
11.73	7.07 ng/ul	1670860	Naphthalene-d8	10.27

Hit#	of	Tentative ID	MW	MolForm	CAS#	Qual
1	5	Tridecane	184	C13H28	000629-50-5	95
2		Tridecane	184	C13H28	000629-50-5	94
3		Tetradecane	198	C14H30	000629-59-4	90
4		Hexadecane	226	C16H34	000544-76-3	90
5		Hexadecane	226	C16H34	000544-76-3	86



Data Path : Z:\SVOASRV\HPCHEM1\BNA M\DATA\BM051920\  
 Data File : BM026030.D  
 Acq On : 19 May 2020 23:16  
 Operator : MA/SJ  
 Sample : L2681-02  
 Misc :  
 ALS Vial : 19 Sample Multiplier: 1

Instrument :  
 BNA\_M  
 ClientSampled :  
 C5CA4

Quant Method : Z:\SVOASRV\HPCHEM1\BNA\_M\METHODS\SOM-EPA-BM051320MA.M  
 Quant Title : SVOA CALIBRATION

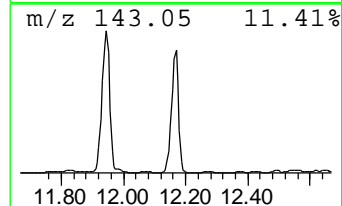
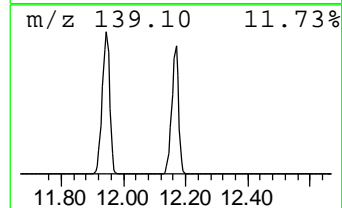
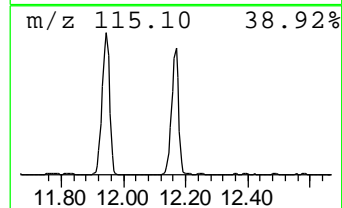
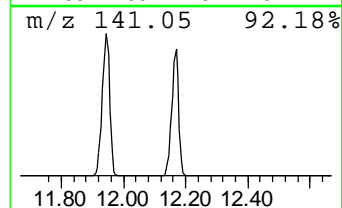
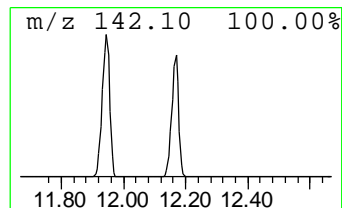
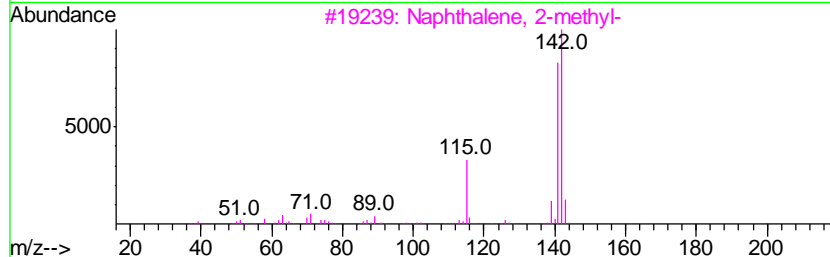
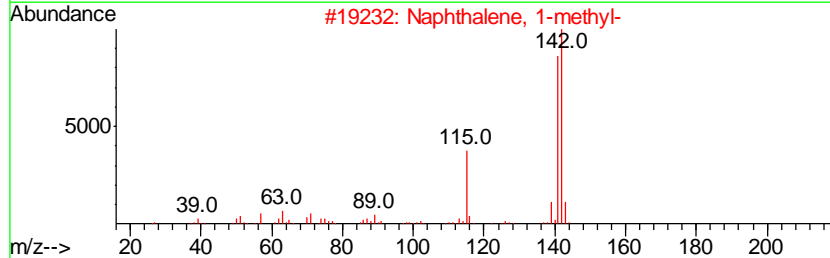
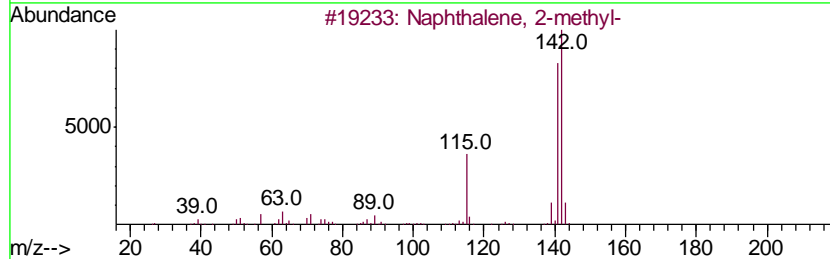
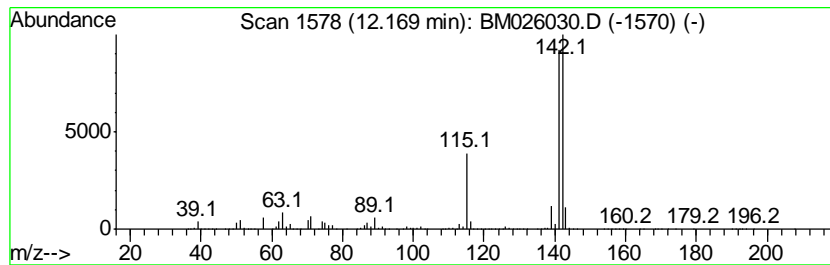
TIC Library : C:\DATABASE\NIST11.L  
 TIC Integration Parameters: LSCINT.P

\*\*\*\*\*  
 Peak Number 21 Naphthalene, 1-methyl- Concentration Rank 3

R.T.	EstConc	Area	Relative to ISTD	R.T.
12.17	77.17 ng/ul	18237400	Naphthalene-d8	10.27

Hit#	of	Tentative ID	MW	MolForm	CAS#	Qual
1	5	Naphthalene, 2-methyl-	142	C11H10	000091-57-6	96
2		Naphthalene, 1-methyl-	142	C11H10	000090-12-0	96
3		Naphthalene, 2-methyl-	142	C11H10	000091-57-6	96
4		1,4-Methanonaphthalene, 1,4-dihy...	142	C11H10	004453-90-1	94
5		Naphthalene, 1-methyl-	142	C11H10	000090-12-0	94





Data Path : Z:\SVOASRV\HPCHEM1\BNA M\DATA\BM051920\  
 Data File : BM026030.D  
 Acq On : 19 May 2020 23:16  
 Operator : MA/SJ  
 Sample : L2681-02  
 Misc :  
 ALS Vial : 19 Sample Multiplier: 1

Instrument :  
 BNA\_M  
 ClientSampleID :  
 C5CA4

Quant Method : Z:\SVOASRV\HPCHEM1\BNA\_M\METHODS\SOM-EPA-BM051320MA.M  
 Quant Title : SVOA CALIBRATION

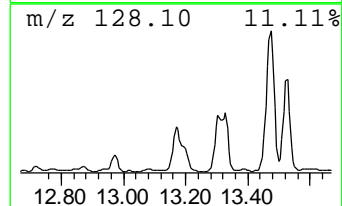
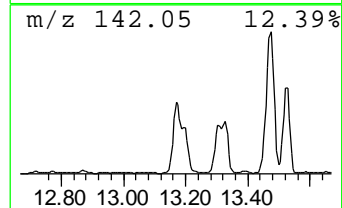
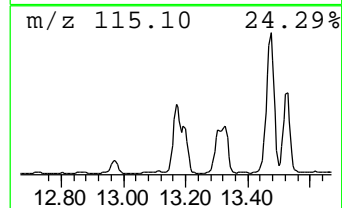
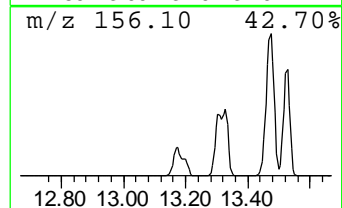
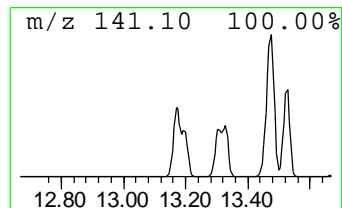
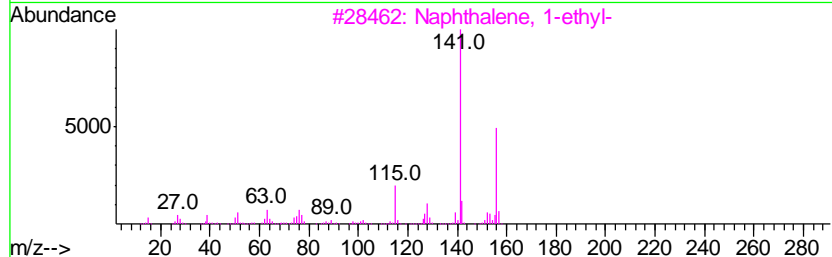
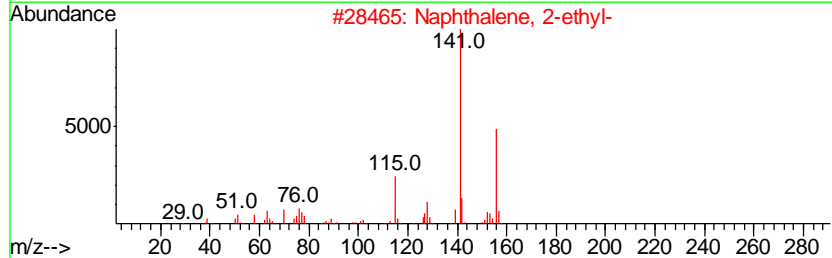
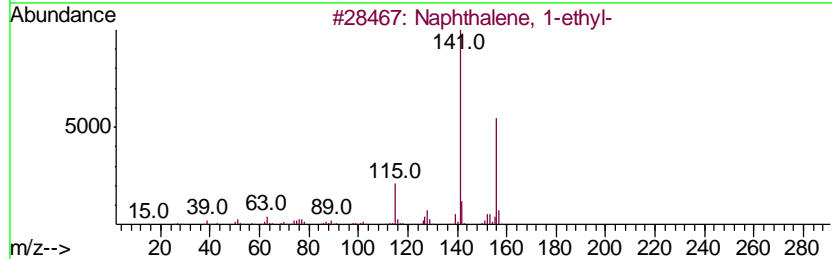
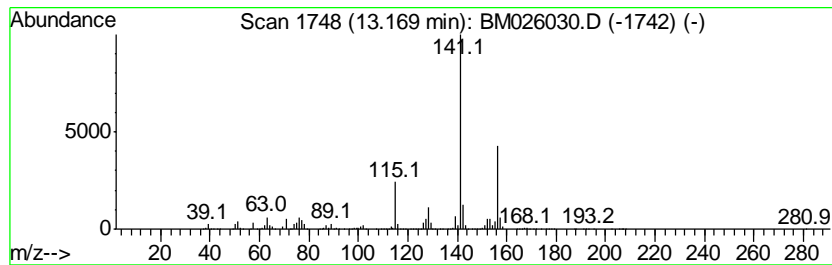
TIC Library : C:\DATABASE\NIST11.L  
 TIC Integration Parameters: LSCINT.P

\*\*\*\*\*  
 Peak Number 22 Naphthalene, 1-ethyl- Concentration Rank 42

R.T.	EstConc	Area	Relative to ISTD	R.T.
13.17	13.07 ng/ul	4629070	Acenaphthene-d10	14.15

Hit#	of	Tentative ID	MW	MolForm	CAS#	Qual
1	5	Naphthalene, 1-ethyl-	156	C12H12	001127-76-0	96
2		Naphthalene, 2-ethyl-	156	C12H12	000939-27-5	96
3		Naphthalene, 1-ethyl-	156	C12H12	001127-76-0	95
4		Naphthalene, 2-ethyl-	156	C12H12	000939-27-5	95
5		Naphthalene, 1-ethyl-	156	C12H12	001127-76-0	94



Data Path : Z:\SVOASRV\HPCHEM1\BNA M\DATA\BM051920\  
 Data File : BM026030.D  
 Acq On : 19 May 2020 23:16  
 Operator : MA/SJ  
 Sample : L2681-02  
 Misc :  
 ALS Vial : 19 Sample Multiplier: 1

Instrument :  
 BNA\_M  
 ClientSampleID :  
 C5CA4

Quant Method : Z:\SVOASRV\HPCHEM1\BNA\_M\METHODS\SOM-EPA-BM051320MA.M  
 Quant Title : SVOA CALIBRATION

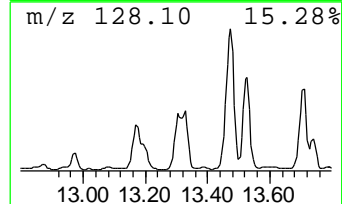
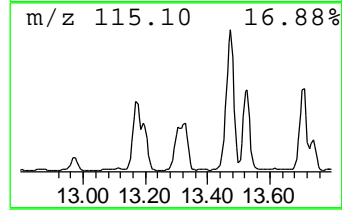
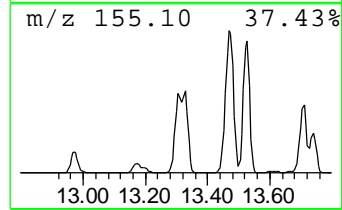
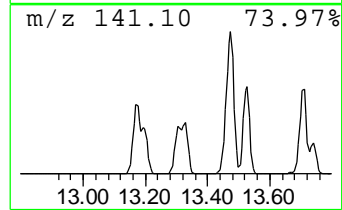
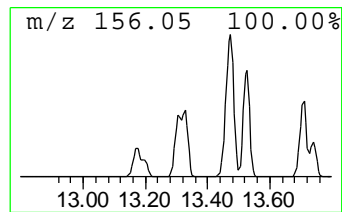
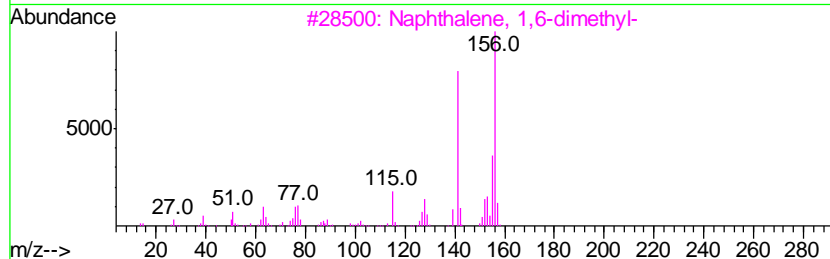
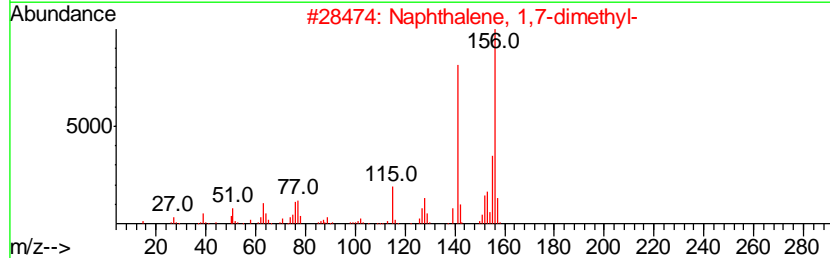
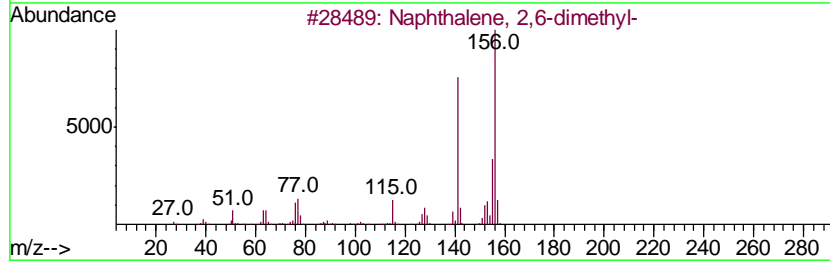
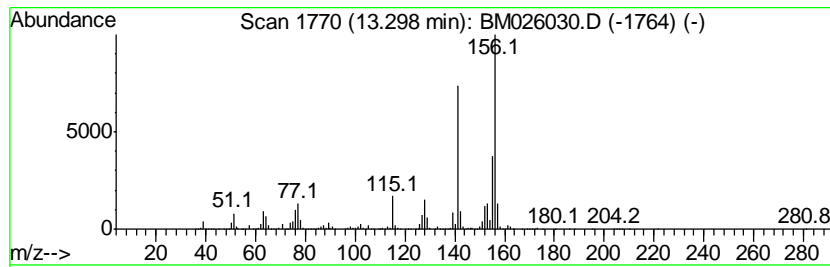
TIC Library : C:\DATABASE\NIST11.L  
 TIC Integration Parameters: LSCINT.P

\*\*\*\*\*  
 Peak Number 23 Naphthalene, 2,6-dimethyl- Concentration Rank 33

R.T.	EstConc	Area	Relative to ISTD	R.T.
13.30	16.23 ng/ul	5750830	Acenaphthene-d10	14.15

Hit#	of	Tentative ID	MW	MolForm	CAS#	Qual
1	5	Naphthalene, 2,6-dimethyl-	156	C12H12	000581-42-0	98
2		Naphthalene, 1,7-dimethyl-	156	C12H12	000575-37-1	98
3		Naphthalene, 1,6-dimethyl-	156	C12H12	000575-43-9	98
4		Naphthalene, 2,6-dimethyl-	156	C12H12	000581-42-0	98
5		Naphthalene, 2,7-dimethyl-	156	C12H12	000582-16-1	97



Data Path : Z:\SVOASRV\HPCHEM1\BNA M\DATA\BM051920\  
 Data File : BM026030.D  
 Acq On : 19 May 2020 23:16  
 Operator : MA/SJ  
 Sample : L2681-02  
 Misc :  
 ALS Vial : 19 Sample Multiplier: 1

Instrument :  
 BNA\_M  
 ClientSampleId :  
 C5CA4

Quant Method : Z:\SVOASRV\HPCHEM1\BNA\_M\METHODS\SOM-EPA-BM051320MA.M  
 Quant Title : SVOA CALIBRATION

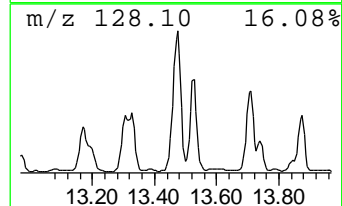
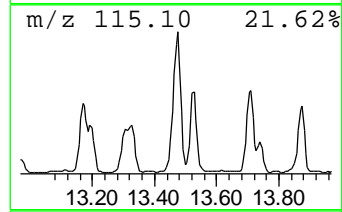
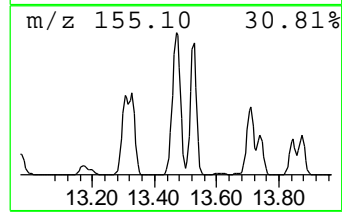
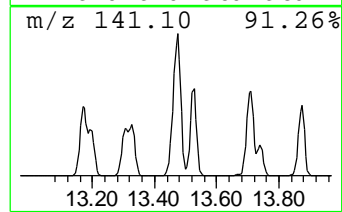
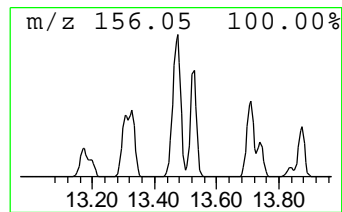
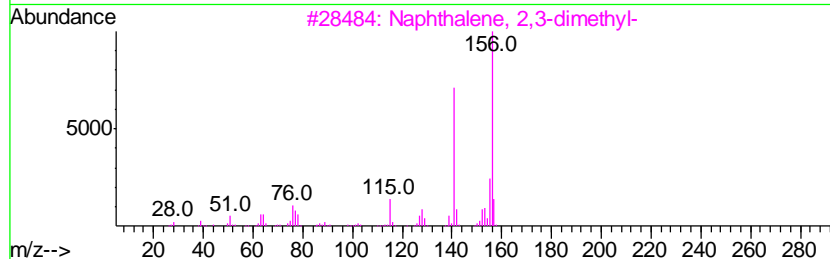
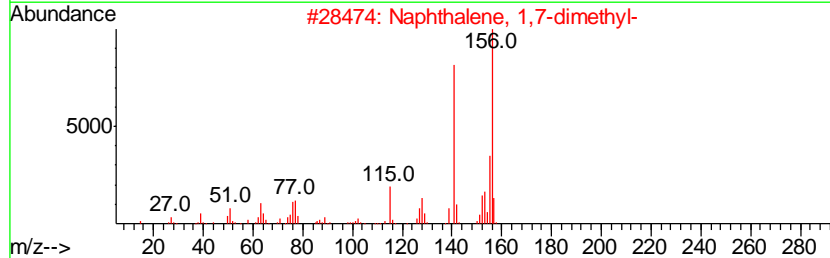
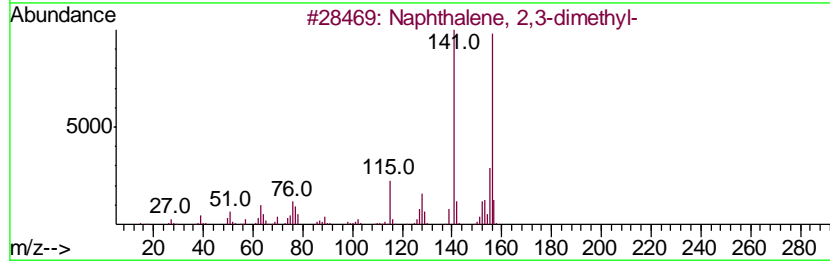
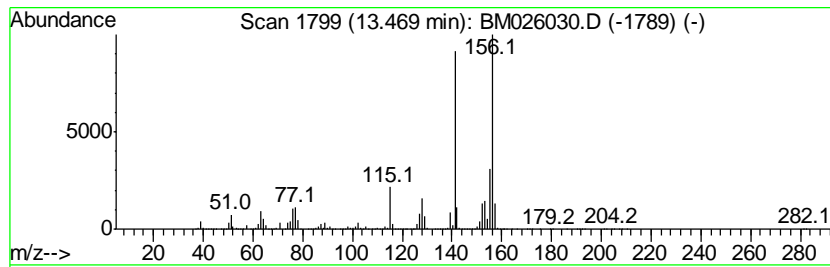
TIC Library : C:\DATABASE\NIST11.L  
 TIC Integration Parameters: LSCINT.P

\*\*\*\*\*  
 Peak Number 24 Naphthalene, 2,3-dimethyl- Concentration Rank 9

R.T.	EstConc	Area	Relative to ISTD	R.T.
13.47	45.18 ng/ul	16002800	Acenaphthene-d10	14.15

Hit#	of	Tentative ID	MW	MolForm	CAS#	Qual
1	5	Naphthalene, 2,3-dimethyl-	156	C12H12	000581-40-8	98
2		Naphthalene, 1,7-dimethyl-	156	C12H12	000575-37-1	98
3		Naphthalene, 2,3-dimethyl-	156	C12H12	000581-40-8	97
4		Naphthalene, 1,5-dimethyl-	156	C12H12	000571-61-9	97
5		Naphthalene, 1,3-dimethyl-	156	C12H12	000575-41-7	97



Data Path : Z:\SVOASRV\HPCHEM1\BNA M\DATA\BM051920\  
 Data File : BM026030.D  
 Acq On : 19 May 2020 23:16  
 Operator : MA/SJ  
 Sample : L2681-02  
 Misc :  
 ALS Vial : 19 Sample Multiplier: 1

Instrument :  
 BNA\_M  
 ClientSampled :  
 C5CA4

Quant Method : Z:\SVOASRV\HPCHEM1\BNA\_M\METHODS\SOM-EPA-BM051320MA.M  
 Quant Title : SVOA CALIBRATION

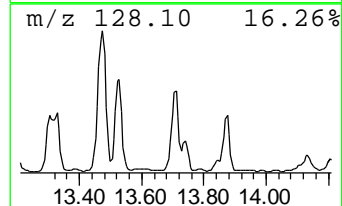
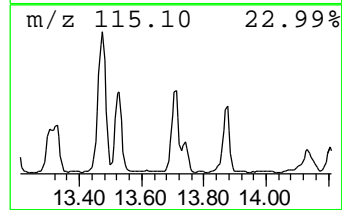
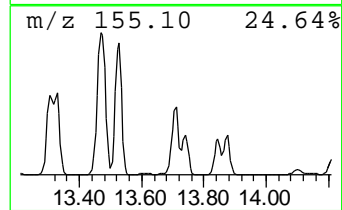
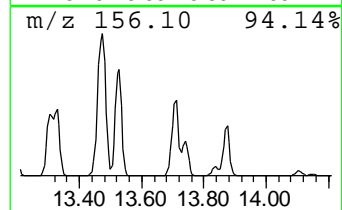
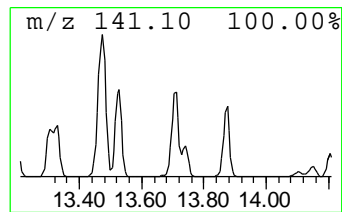
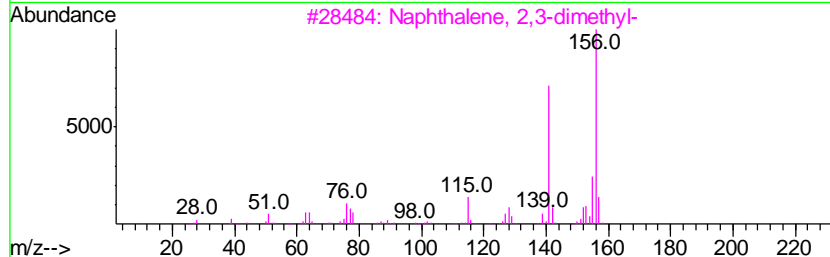
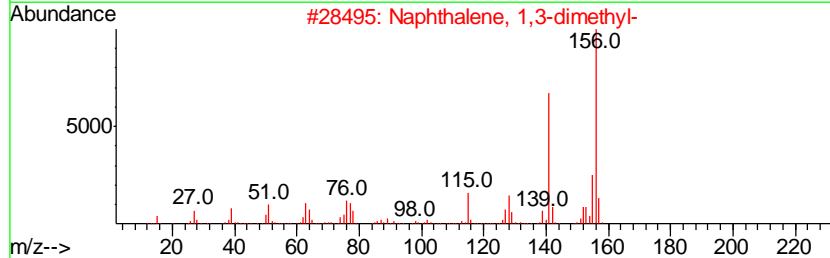
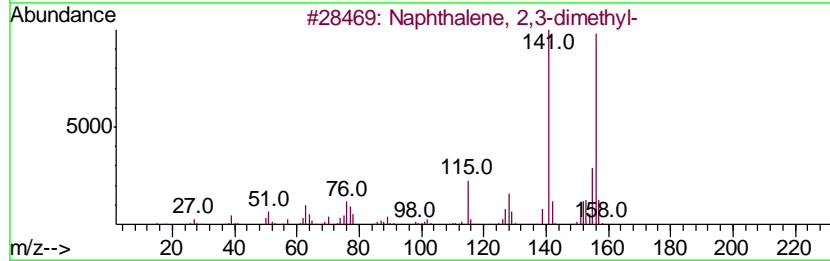
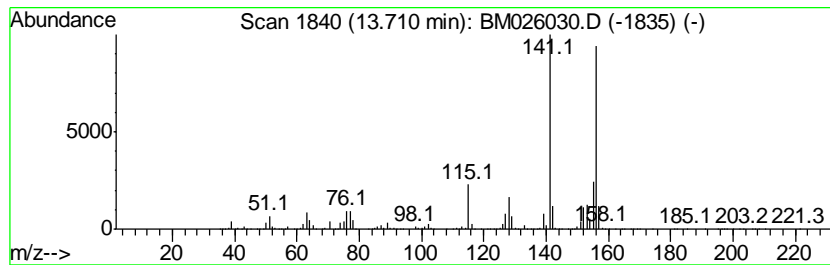
TIC Library : C:\DATABASE\NIST11.L  
 TIC Integration Parameters: LSCINT.P

\*\*\*\*\*  
 Peak Number 25 Naphthalene, 1,3-dimethyl- Concentration Rank 22

R.T.	EstConc	Area	Relative to ISTD	R.T.
13.71	22.36 ng/ul	7919310	Acenaphthene-d10	14.15

Hit#	of	Tentative ID	MW	MolForm	CAS#	Qual
1	5	Naphthalene, 2,3-dimethyl-	156	C12H12	000581-40-8	98
2		Naphthalene, 1,3-dimethyl-	156	C12H12	000575-41-7	97
3		Naphthalene, 2,3-dimethyl-	156	C12H12	000581-40-8	97
4		Naphthalene, 1,5-dimethyl-	156	C12H12	000571-61-9	97
5		Naphthalene, 2,3-dimethyl-	156	C12H12	000581-40-8	97



Data Path : Z:\SVOASRV\HPCHEM1\BNA M\DATA\BM051920\  
 Data File : BM026030.D  
 Acq On : 19 May 2020 23:16  
 Operator : MA/SJ  
 Sample : L2681-02  
 Misc :  
 ALS Vial : 19 Sample Multiplier: 1

Instrument :  
 BNA\_M  
 ClientSampleID :  
 C5CA4

Quant Method : Z:\SVOASRV\HPCHEM1\BNA\_M\METHODS\SOM-EPA-BM051320MA.M  
 Quant Title : SVOA CALIBRATION

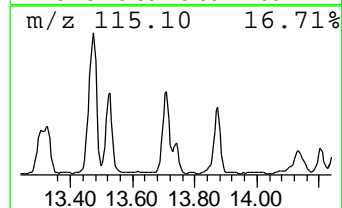
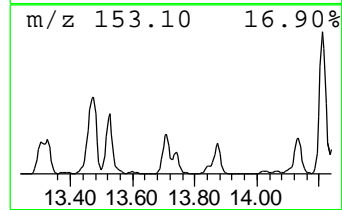
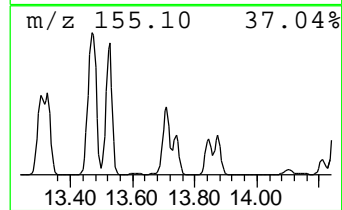
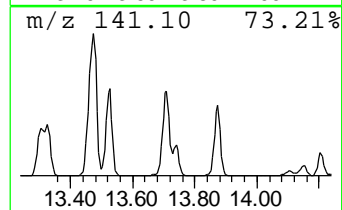
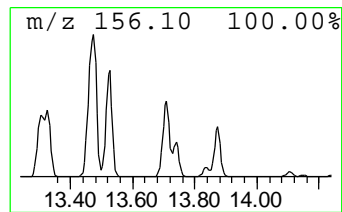
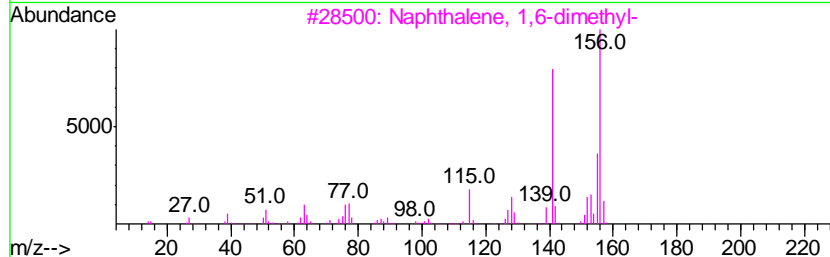
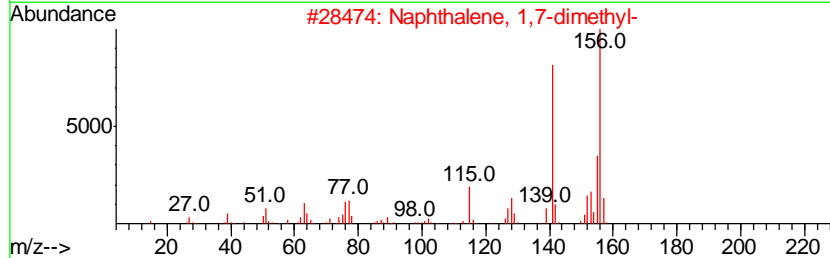
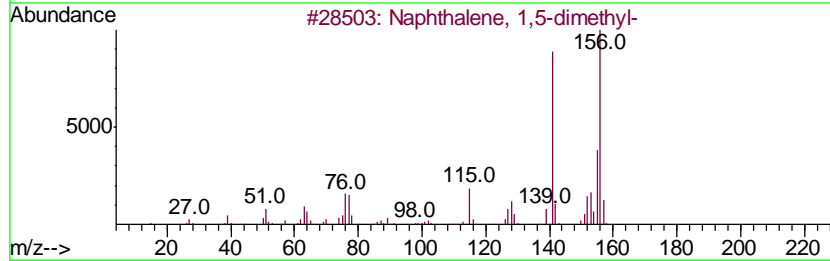
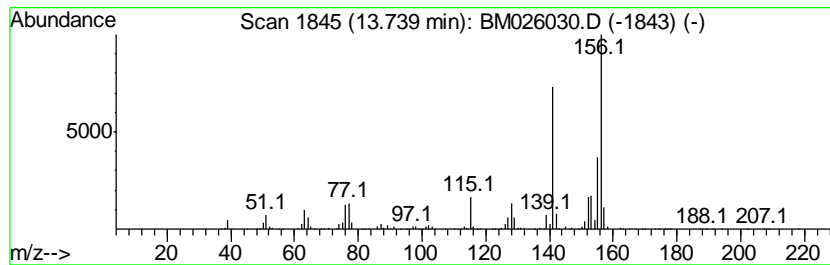
TIC Library : C:\DATABASE\NIST11.L  
 TIC Integration Parameters: LSCINT.P

\*\*\*\*\*  
 Peak Number 26 Naphthalene, 1,5-dimethyl- Concentration Rank 56

R.T.	EstConc	Area	Relative to ISTD	R.T.
13.74	6.52 ng/ul	2310930	Acenaphthene-d10	14.15

Hit#	of	Tentative ID	MW	MolForm	CAS#	Qual
1	5	Naphthalene, 1,5-dimethyl-	156	C12H12	000571-61-9	98
2		Naphthalene, 1,7-dimethyl-	156	C12H12	000575-37-1	98
3		Naphthalene, 1,6-dimethyl-	156	C12H12	000575-43-9	98
4		Naphthalene, 2,6-dimethyl-	156	C12H12	000581-42-0	97
5		Naphthalene, 1,5-dimethyl-	156	C12H12	000571-61-9	97



Data Path : Z:\SVOASRV\HPCHEM1\BNA M\DATA\BM051920\  
 Data File : BM026030.D  
 Acq On : 19 May 2020 23:16  
 Operator : MA/SJ  
 Sample : L2681-02  
 Misc :  
 ALS Vial : 19 Sample Multiplier: 1

Instrument :  
 BNA\_M  
 ClientSampleID :  
 C5CA4

Quant Method : Z:\SVOASRV\HPCHEM1\BNA\_M\METHODS\SOM-EPA-BM051320MA.M  
 Quant Title : SVOA CALIBRATION

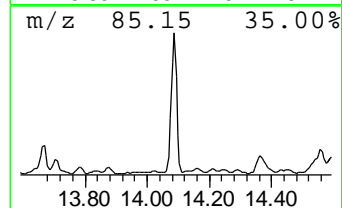
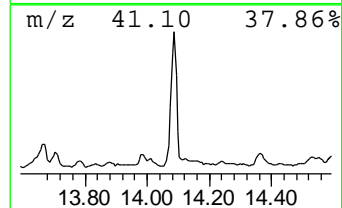
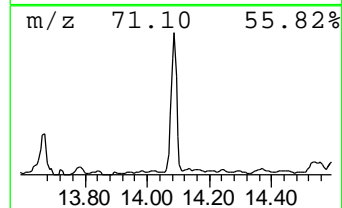
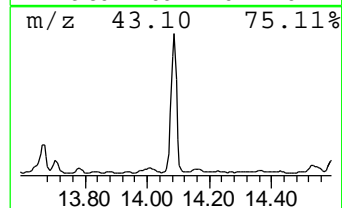
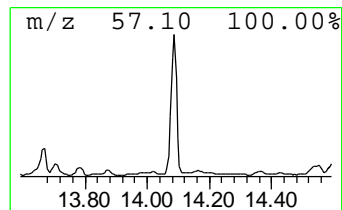
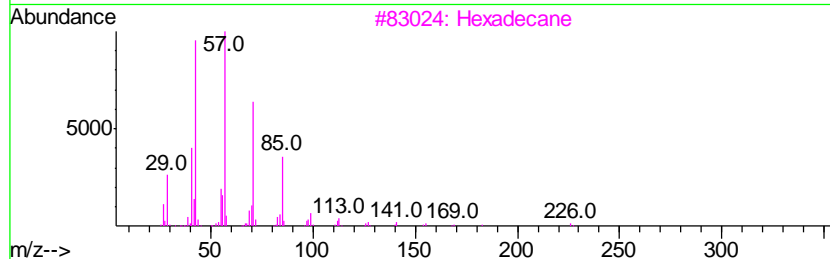
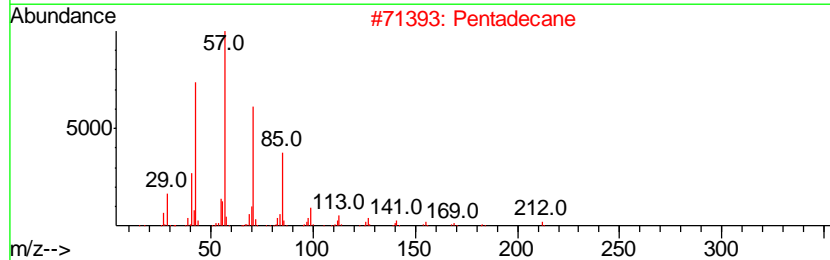
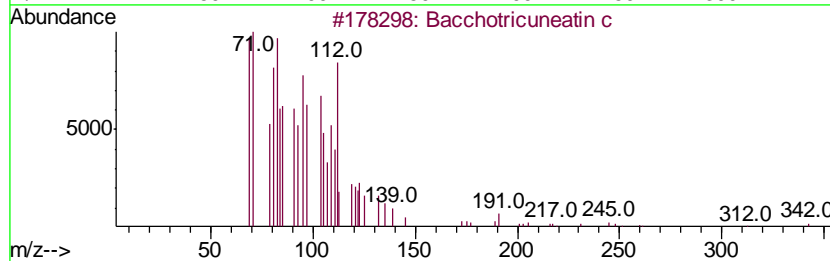
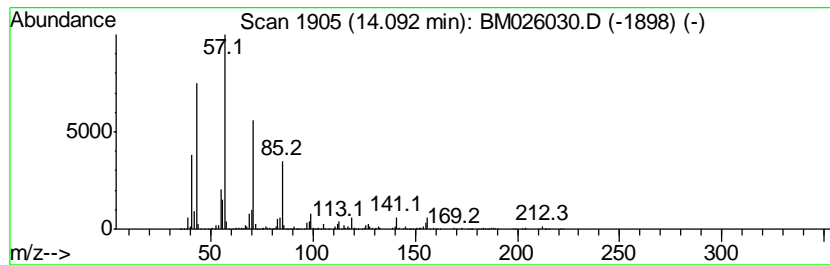
TIC Library : C:\DATABASE\NIST11.L  
 TIC Integration Parameters: LSCINT.P

\*\*\*\*\*  
 Peak Number 27 Bacchotricuneatin c Concentration Rank 48

R.T.	EstConc	Area	Relative to ISTD	R.T.
14.09	11.01 ng/ul	3901540	Acenaphthene-d10	14.15

Hit#	of	Tentative ID	MW	MolForm	CAS#	Qual
1	5	Bacchotricuneatin c	342	C20H22O5	066563-30-2	97
2		Pentadecane	212	C15H32	000629-62-9	93
3		Hexadecane	226	C16H34	000544-76-3	83
4		Hexadecane	226	C16H34	000544-76-3	83
5		Tetradecane	198	C14H30	000629-59-4	80



Data Path : Z:\SVOASRV\HPCHEM1\BNA M\DATA\BM051920\  
 Data File : BM026030.D  
 Acq On : 19 May 2020 23:16  
 Operator : MA/SJ  
 Sample : L2681-02  
 Misc :  
 ALS Vial : 19 Sample Multiplier: 1

Instrument :  
 BNA\_M  
 ClientSampleID :  
 C5CA4

Quant Method : Z:\SVOASRV\HPCHEM1\BNA\_M\METHODS\SOM-EPA-BM051320MA.M  
 Quant Title : SVOA CALIBRATION

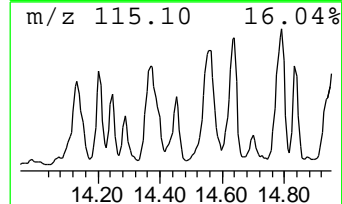
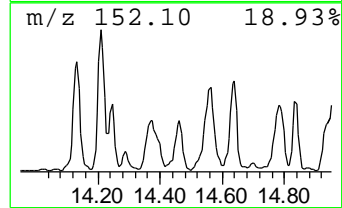
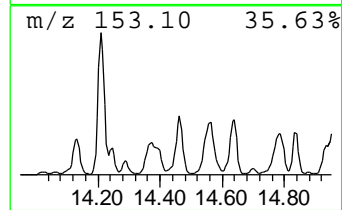
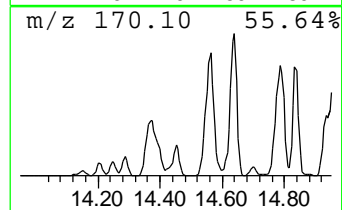
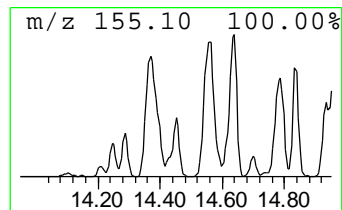
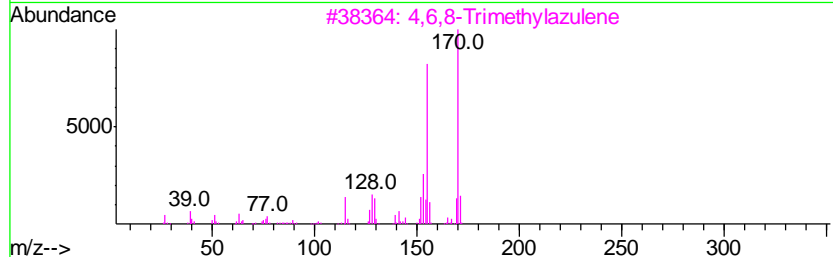
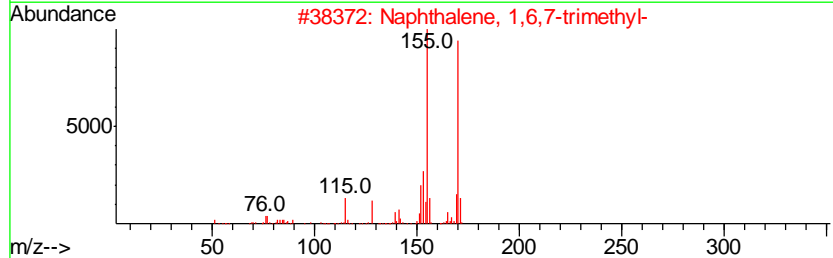
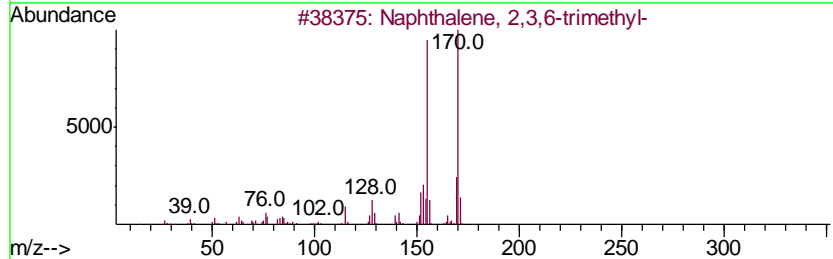
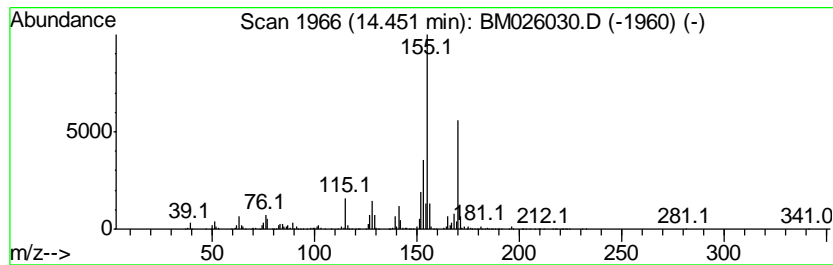
TIC Library : C:\DATABASE\NIST11.L  
 TIC Integration Parameters: LSCINT.P

\*\*\*\*\*  
 Peak Number 28 Naphthalene, 1,6,7-trimethyl- Concentration Rank 58

R.T.	EstConc	Area	Relative to ISTD	R.T.
14.45	6.32 ng/ul	2239570	Acenaphthene-d10	14.15

Hit#	of	Tentative ID	MW	MolForm	CAS#	Qual
1	5	Naphthalene, 2,3,6-trimethyl-	170	C13H14	000829-26-5	94
2		Naphthalene, 1,6,7-trimethyl-	170	C13H14	002245-38-7	94
3		4,6,8-Trimethylazulene	170	C13H14	000941-81-1	94
4		Naphthalene, 2,3,6-trimethyl-	170	C13H14	000829-26-5	91
5		Naphthalene, 2,3,6-trimethyl-	170	C13H14	000829-26-5	91



Data Path : Z:\SVOASRV\HPCHEM1\BNA M\DATA\BM051920\  
 Data File : BM026030.D  
 Acq On : 19 May 2020 23:16  
 Operator : MA/SJ  
 Sample : L2681-02  
 Misc :  
 ALS Vial : 19 Sample Multiplier: 1

Instrument :  
 BNA\_M  
 ClientSampled :  
 C5CA4

Quant Method : Z:\SVOASRV\HPCHEM1\BNA\_M\METHODS\SOM-EPA-BM051320MA.M  
 Quant Title : SVOA CALIBRATION

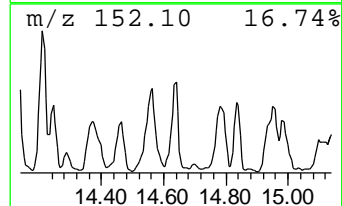
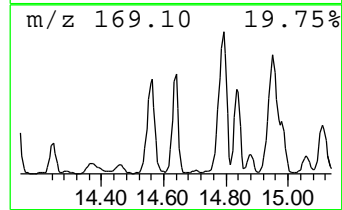
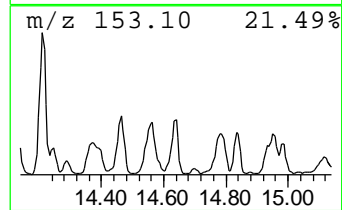
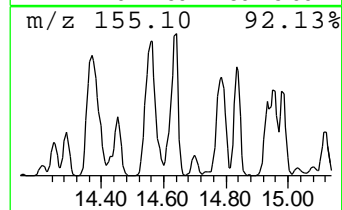
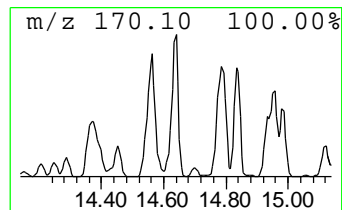
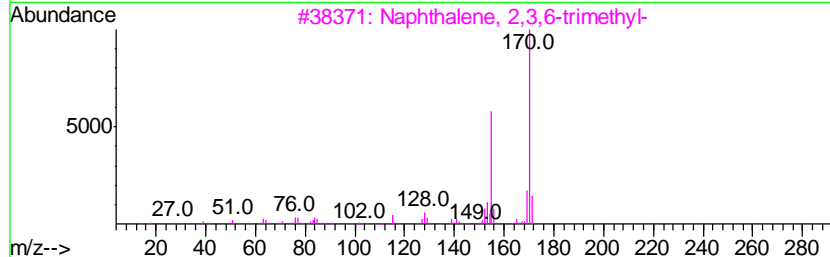
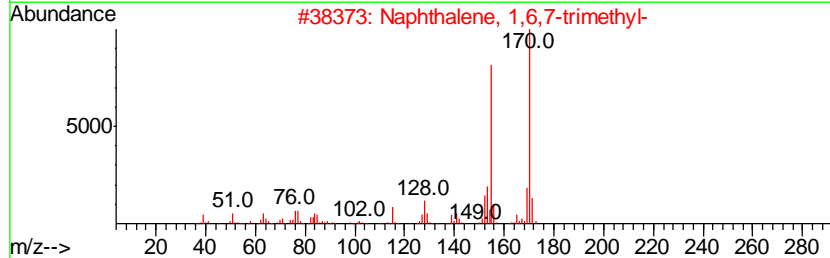
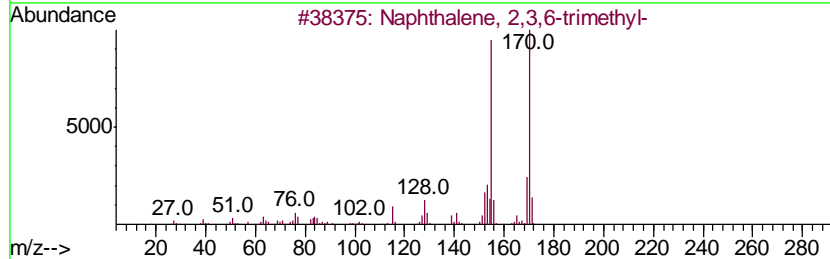
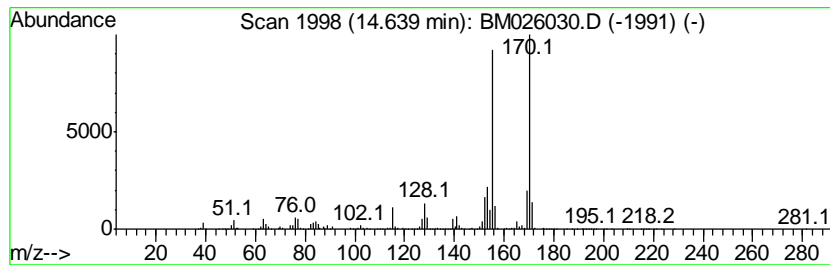
TIC Library : C:\DATABASE\NIST11.L  
 TIC Integration Parameters: LSCINT.P

\*\*\*\*\*  
 Peak Number 29 Naphthalene, 2,3,6-trimethyl- Concentration Rank 38

R.T.	EstConc	Area	Relative to ISTD	R.T.
14.64	14.74 ng/ul	5220630	Acenaphthene-d10	14.15

Hit#	of	Tentative ID	MW	MolForm	CAS#	Qual
1	5	Naphthalene, 2,3,6-trimethyl-	170	C13H14	000829-26-5	98
2		Naphthalene, 1,6,7-trimethyl-	170	C13H14	002245-38-7	97
3		Naphthalene, 2,3,6-trimethyl-	170	C13H14	000829-26-5	97
4		Naphthalene, 1,4,6-trimethyl-	170	C13H14	002131-42-2	96
5		Naphthalene, 2,3,6-trimethyl-	170	C13H14	000829-26-5	95





Data Path : Z:\SVOASRV\HPCHEM1\BNA M\DATA\BM051920\  
 Data File : BM026030.D  
 Acq On : 19 May 2020 23:16  
 Operator : MA/SJ  
 Sample : L2681-02  
 Misc :  
 ALS Vial : 19 Sample Multiplier: 1

Instrument :  
 BNA\_M  
 ClientSampled :  
 C5CA4

Quant Method : Z:\SVOASRV\HPCHEM1\BNA\_M\METHODS\SOM-EPA-BM051320MA.M  
 Quant Title : SVOA CALIBRATION

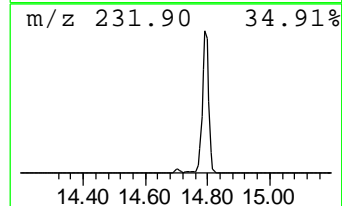
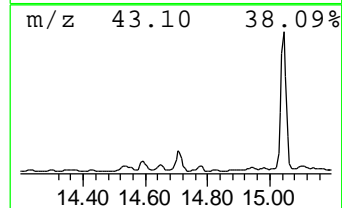
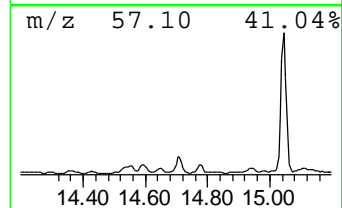
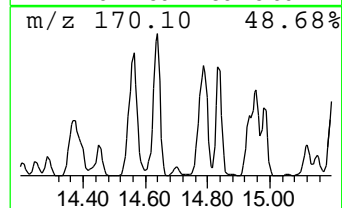
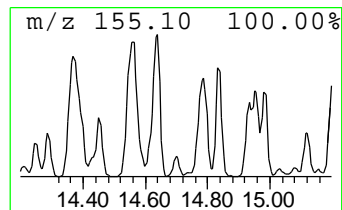
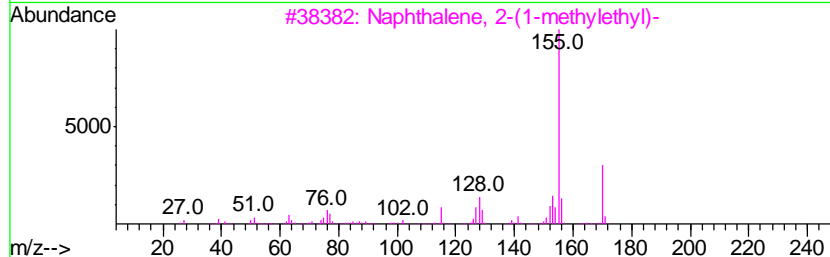
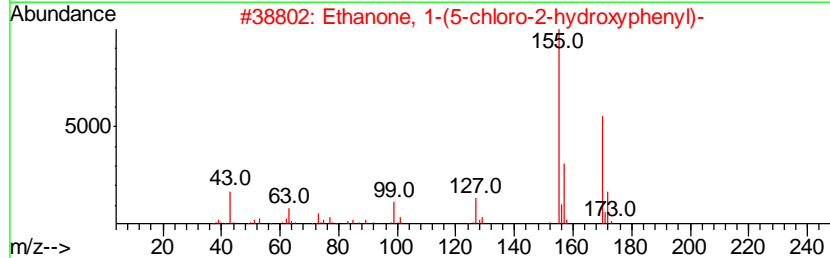
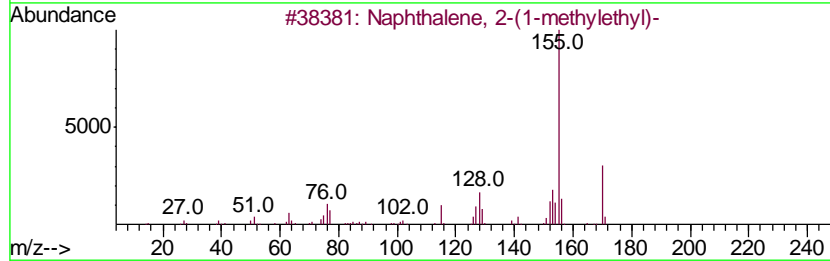
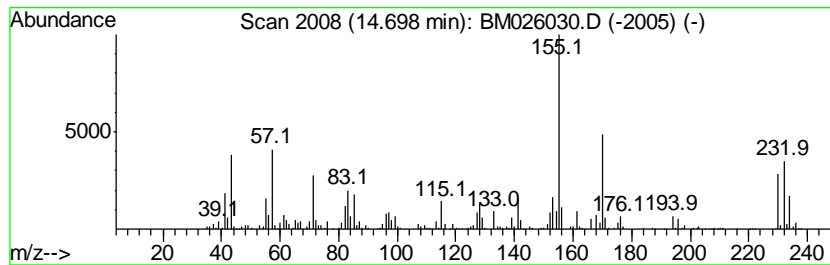
TIC Library : C:\DATABASE\NIST11.L  
 TIC Integration Parameters: LSCINT.P

\*\*\*\*\*  
 Peak Number 30 unknown-02 Concentration Rank 59

R.T.	EstConc	Area	Relative to ISTD	R.T.
14.70	3.93 ng/ul	1392050	Acenaphthene-d10	14.15

Hit#	of	Tentative ID	MW	MolForm	CAS#	Qual
1	5	Naphthalene, 2-(1-methylethyl)-	170	C13H14	002027-17-0	41
2		Ethanone, 1-(5-chloro-2-hydroxyphenyl)-	170	C8H7ClO2	001450-74-4	38
3		Naphthalene, 2-(1-methylethyl)-	170	C13H14	002027-17-0	38
4		Ethanone, 1-(1-Naphthalenyl)-	170	C12H10O	000941-98-0	35
5		2-Naphthyl methyl ketone	170	C12H10O	000093-08-3	35



Data Path : Z:\SVOASRV\HPCHEM1\BNA M\DATA\BM051920\  
 Data File : BM026030.D  
 Acq On : 19 May 2020 23:16  
 Operator : MA/SJ  
 Sample : L2681-02  
 Misc :  
 ALS Vial : 19 Sample Multiplier: 1

Instrument :  
 BNA\_M  
 ClientSampled :  
 C5CA4

Quant Method : Z:\SVOASRV\HPCHEM1\BNA\_M\METHODS\SOM-EPA-BM051320MA.M  
 Quant Title : SVOA CALIBRATION

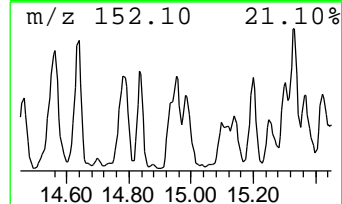
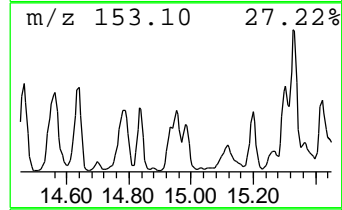
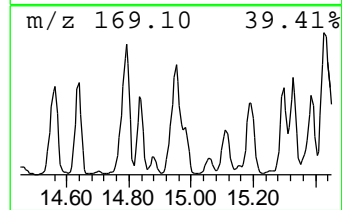
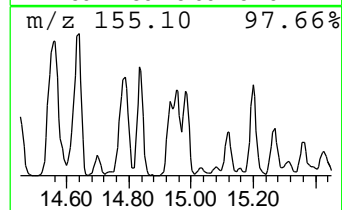
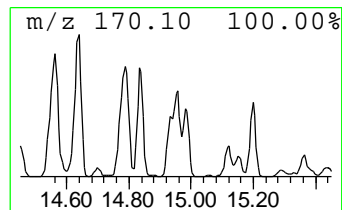
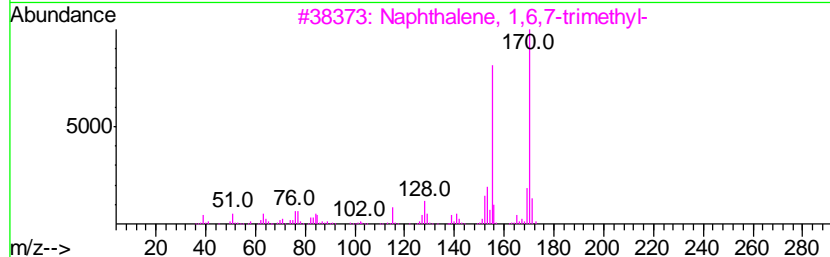
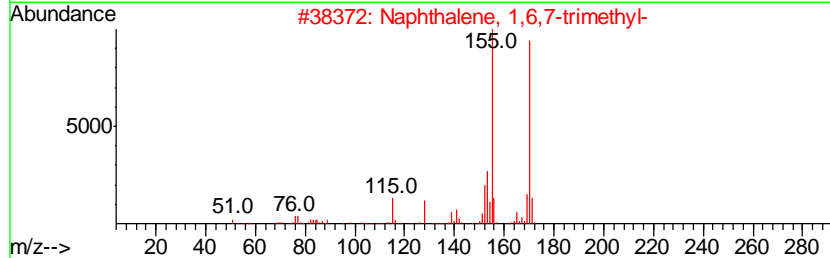
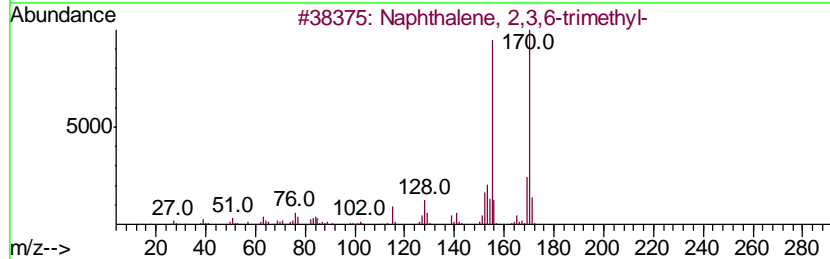
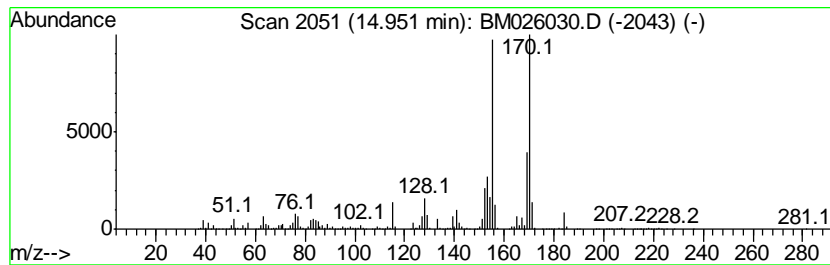
TIC Library : C:\DATABASE\NIST11.L  
 TIC Integration Parameters: LSCINT.P

\*\*\*\*\*  
 Peak Number 31 Naphthalene, 1,4,5-trimethyl- Concentration Rank 31

R.T.	EstConc	Area	Relative to ISTD	R.T.
14.95	17.12 ng/ul	6062640	Acenaphthene-d10	14.15

Hit#	of	Tentative ID	MW	MolForm	CAS#	Qual
1	5	Naphthalene, 2,3,6-trimethyl-	170	C13H14	000829-26-5	97
2		Naphthalene, 1,6,7-trimethyl-	170	C13H14	002245-38-7	96
3		Naphthalene, 1,6,7-trimethyl-	170	C13H14	002245-38-7	95
4		Naphthalene, 1,4,5-trimethyl-	170	C13H14	002131-41-1	95
5		Naphthalene, 1,4,6-trimethyl-	170	C13H14	002131-42-2	94



Data Path : Z:\SVOASRV\HPCHEM1\BNA M\DATA\BM051920\  
 Data File : BM026030.D  
 Acq On : 19 May 2020 23:16  
 Operator : MA/SJ  
 Sample : L2681-02  
 Misc :  
 ALS Vial : 19 Sample Multiplier: 1

Instrument :  
 BNA\_M  
 ClientSampleID :  
 C5CA4

Quant Method : Z:\SVOASRV\HPCHEM1\BNA\_M\METHODS\SOM-EPA-BM051320MA.M  
 Quant Title : SVOA CALIBRATION

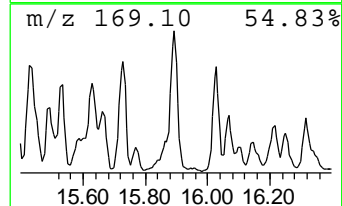
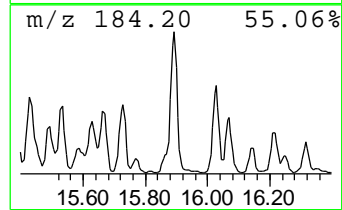
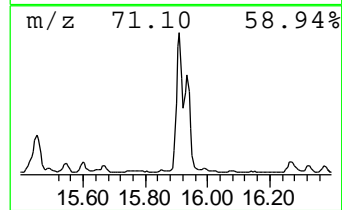
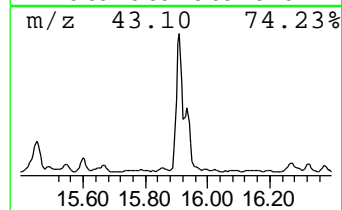
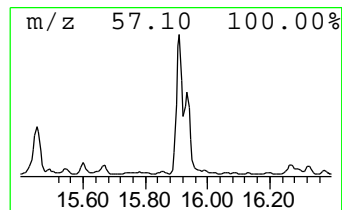
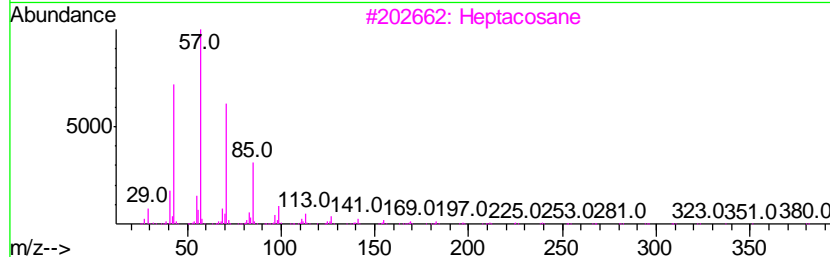
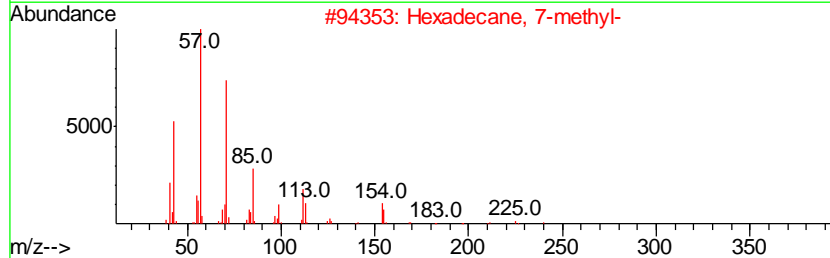
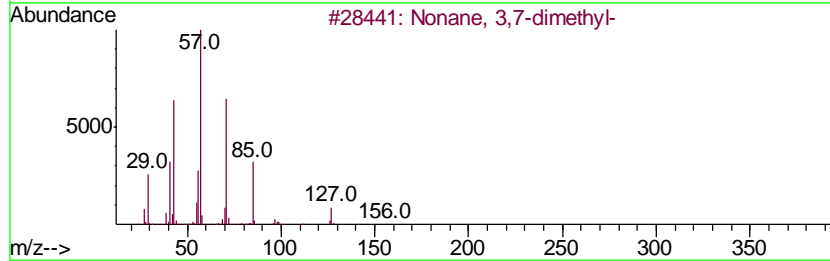
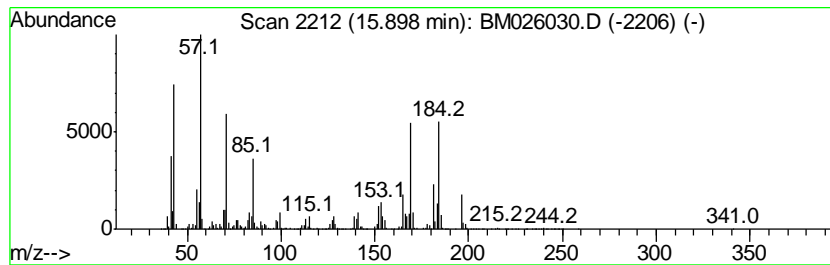
TIC Library : C:\DATABASE\NIST11.L  
 TIC Integration Parameters: LSCINT.P

\*\*\*\*\*  
 Peak Number 38 (DEL) Alkane: Straight-Chai... Concentration Rank 5

R.T.	EstConc	Area	Relative to ISTD	R.T.
15.90	56.21 ng/ul	7066710	Phenanthrene-d10	16.91

Hit#	of	Tentative ID	MW	MolForm	CAS#	Qual
1	5	Nonane, 3,7-dimethyl-	156	C11H24	017302-32-8	53
2		Hexadecane, 7-methyl-	240	C17H36	026730-20-1	53
3		Heptacosane	380	C27H56	000593-49-7	52
4		Eicosane	282	C20H42	000112-95-8	52
5		Tridecane	184	C13H28	000629-50-5	49



Data Path : Z:\SVOASRV\HPCHEM1\BNA M\DATA\BM051920\  
 Data File : BM026030.D  
 Acq On : 19 May 2020 23:16  
 Operator : MA/SJ  
 Sample : L2681-02  
 Misc :  
 ALS Vial : 19 Sample Multiplier: 1

Instrument :  
 BNA\_M  
 ClientSampleID :  
 C5CA4

Quant Method : Z:\SVOASRV\HPCHEM1\BNA\_M\METHODS\SOM-EPA-BM051320MA.M  
 Quant Title : SVOA CALIBRATION

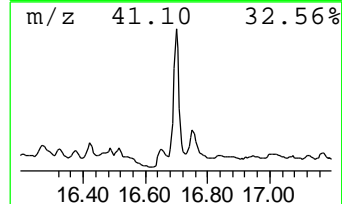
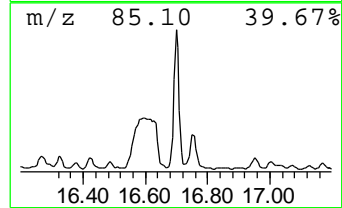
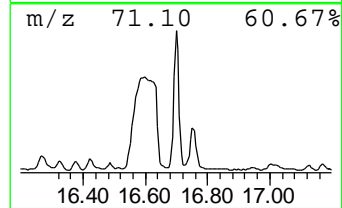
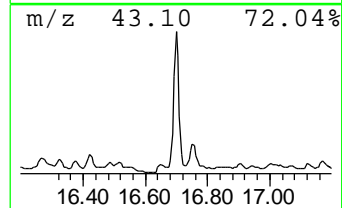
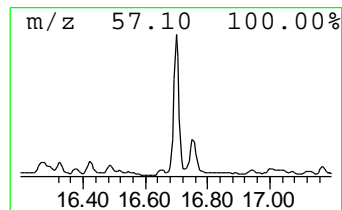
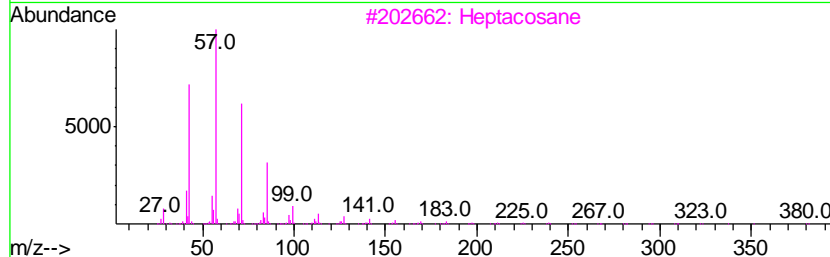
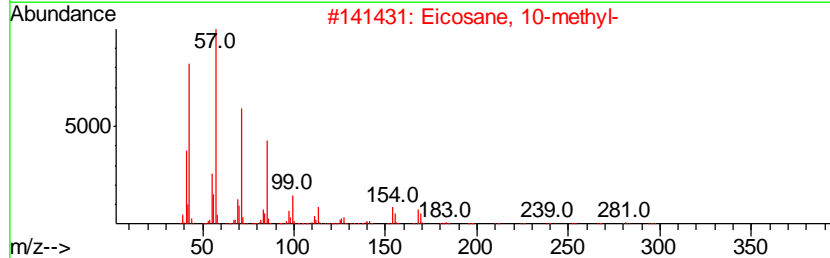
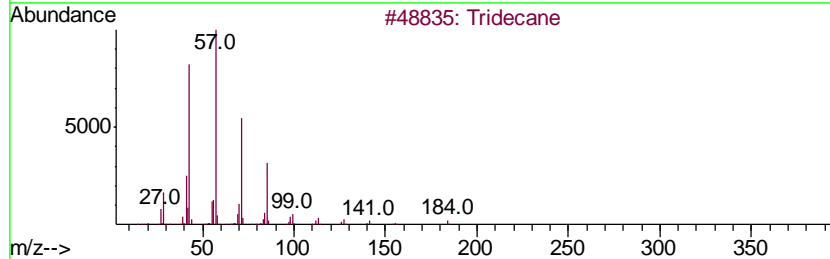
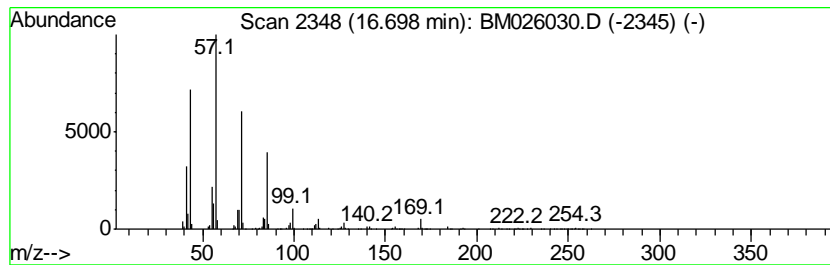
TIC Library : C:\DATABASE\NIST11.L  
 TIC Integration Parameters: LSCINT.P

\*\*\*\*\*  
 Peak Number 44 (DEL) Alkane: Straight-Chai... Concentration Rank 21

R.T.	EstConc	Area	Relative to ISTD	R.T.
16.70	22.37 ng/ul	2812100	Phenanthrene-d10	16.91

Hit#	of	Tentative ID	MW	MolForm	CAS#	Qual
1	5	Tridecane	184	C13H28	000629-50-5	92
2		Eicosane, 10-methyl-	296	C21H44	054833-23-7	90
3		Heptacosane	380	C27H56	000593-49-7	90
4		Heptadecane, 8-methyl-	254	C18H38	013287-23-5	87
5		Pentadecane	212	C15H32	000629-62-9	86



Data Path : Z:\SVOASRV\HPCHEM1\BNA M\DATA\BM051920\  
 Data File : BM026030.D  
 Acq On : 19 May 2020 23:16  
 Operator : MA/SJ  
 Sample : L2681-02  
 Misc :  
 ALS Vial : 19 Sample Multiplier: 1

Instrument :  
 BNA\_M  
 ClientSampleID :  
 C5CA4

Quant Method : Z:\SVOASRV\HPCHEM1\BNA\_M\METHODS\SOM-EPA-BM051320MA.M  
 Quant Title : SVOA CALIBRATION

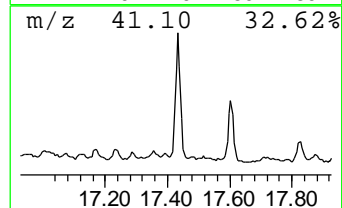
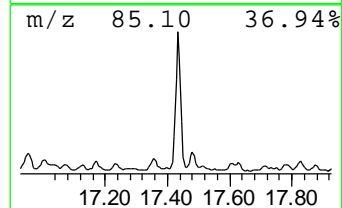
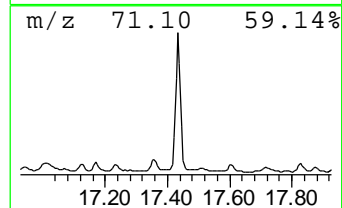
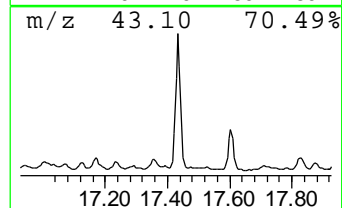
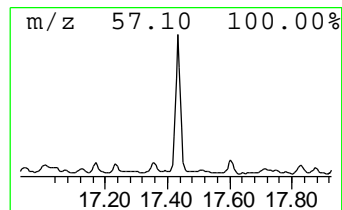
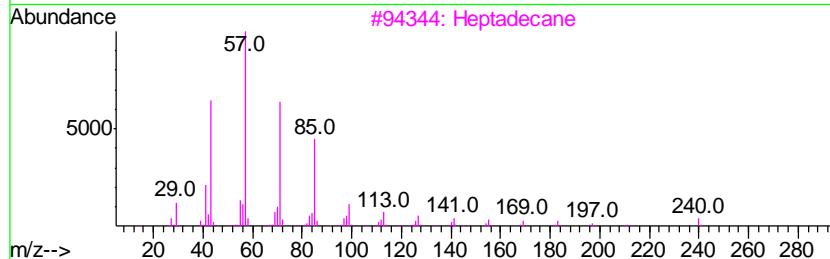
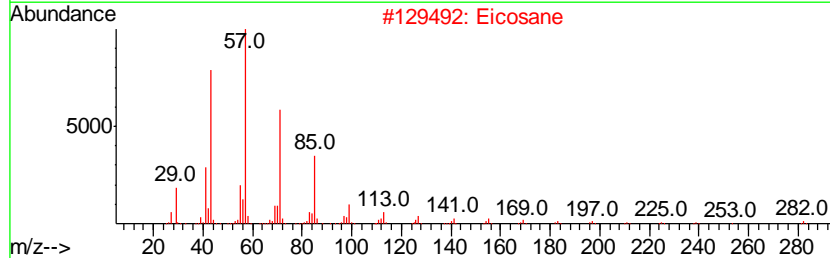
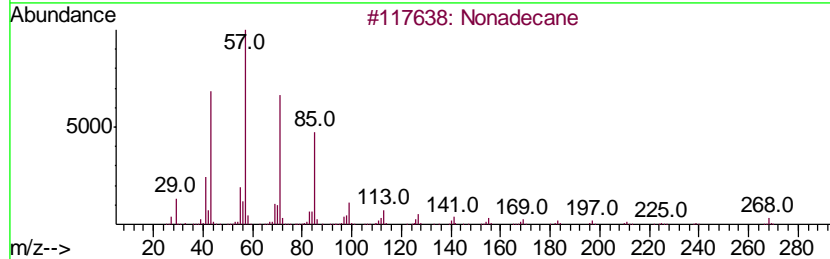
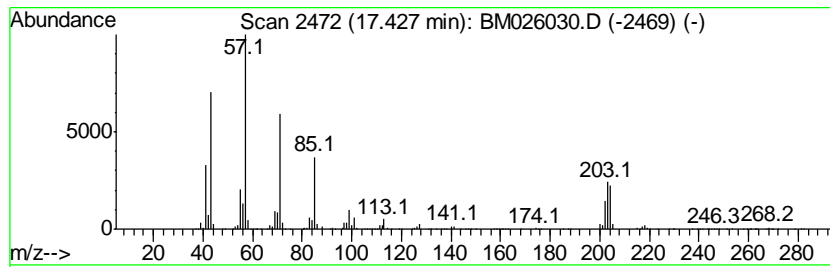
TIC Library : C:\DATABASE\NIST11.L  
 TIC Integration Parameters: LSCINT.P

\*\*\*\*\*  
 Peak Number 47 (DEL) Alkane: Straight-Chai... Concentration Rank 41

R.T.	EstConc	Area	Relative to ISTD	R.T.
17.43	13.39 ng/ul	1683700	Phenanthrene-d10	16.91

Hit#	of	Tentative ID	MW	MolForm	CAS#	Qual
1	5	Nonadecane	268	C19H40	000629-92-5	93
2		Eicosane	282	C20H42	000112-95-8	80
3		Heptadecane	240	C17H36	000629-78-7	80
4		Hexadecane	226	C16H34	000544-76-3	80
5		Hexadecane	226	C16H34	000544-76-3	72



Data Path : Z:\SVOASRV\HPCHEM1\BNA M\DATA\BM051920\  
 Data File : BM026030.D  
 Acq On : 19 May 2020 23:16  
 Operator : MA/SJ  
 Sample : L2681-02  
 Misc :  
 ALS Vial : 19 Sample Multiplier: 1

Instrument :  
 BNA\_M  
 ClientSampled :  
 C5CA4

Quant Method : Z:\SVOASRV\HPCHEM1\BNA\_M\METHODS\SOM-EPA-BM051320MA.M  
 Quant Title : SVOA CALIBRATION

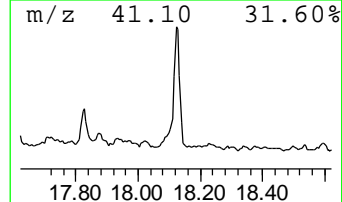
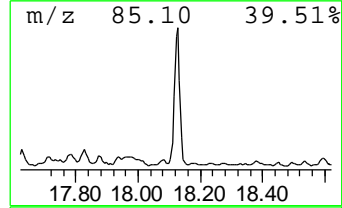
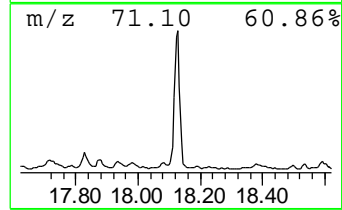
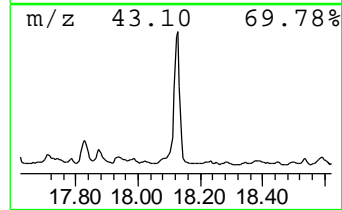
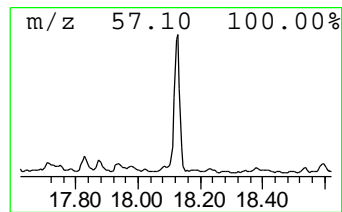
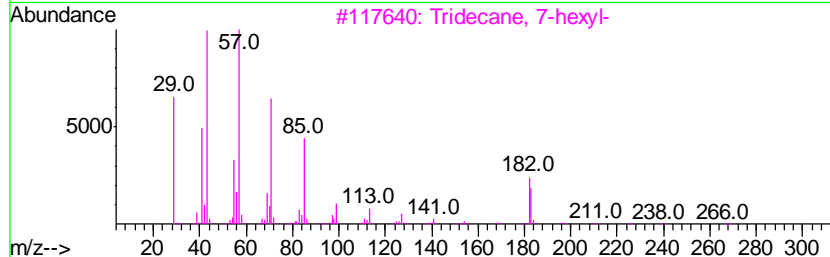
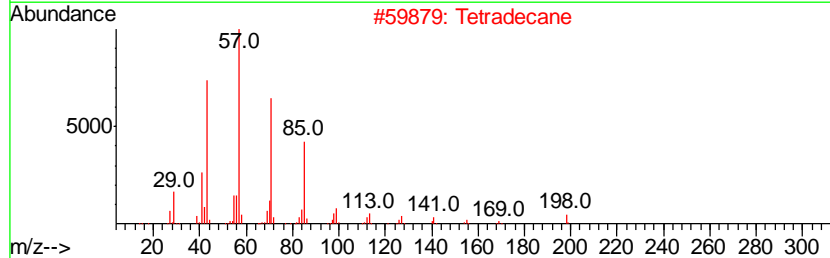
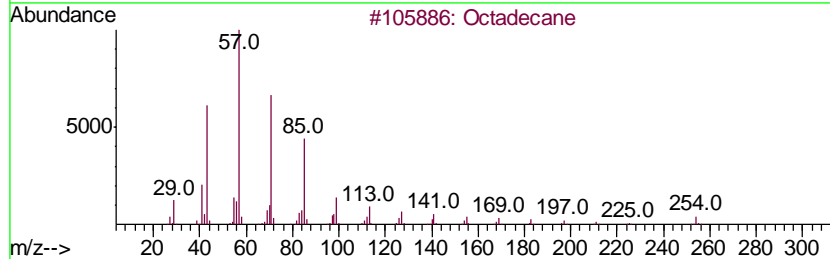
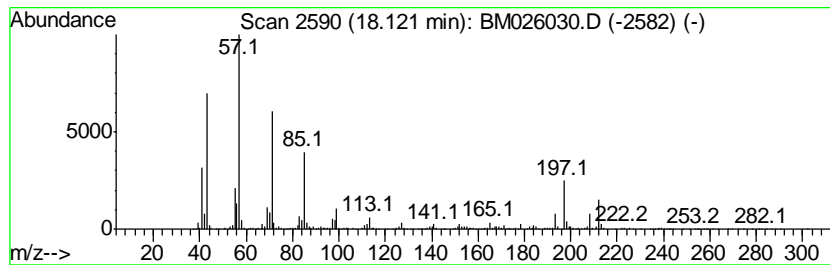
TIC Library : C:\DATABASE\NIST11.L  
 TIC Integration Parameters: LSCINT.P

\*\*\*\*\*  
 Peak Number 55 (DEL) Alkane: Straight-Chai... Concentration Rank 34

R.T.	EstConc	Area	Relative to ISTD	R.T.
18.12	16.18 ng/ul	2034350	Phenanthrene-d10	16.91

Hit#	of	Tentative ID	MW	MolForm	CAS#	Qual
1	5	Octadecane	254	C18H38	000593-45-3	93
2		Tetradecane	198	C14H30	000629-59-4	92
3		Tridecane, 7-hexyl-	268	C19H40	007225-66-3	92
4		Tridecane	184	C13H28	000629-50-5	86
5		Tetradecane	198	C14H30	000629-59-4	70



Data Path : Z:\SVOASRV\HPCHEM1\BNA\_M\DATA\BM051920\  
 Data File : BM026030.D  
 Acq On : 19 May 2020 23:16  
 Operator : MA/SJ  
 Sample : L2681-02  
 Misc :  
 ALS Vial : 19 Sample Multiplier: 1

Instrument :  
 BNA\_M  
 ClientSampleId :  
 C5CA4

Quant Method : Z:\SVOASRV\HPCHEM1\BNA\_M\METHODS\SOM-EPA-BM051320MA.M  
 Quant Title : SVOA CALIBRATION

TIC Library : C:\DATABASE\NIST11.L  
 TIC Integration Parameters: LSCINT.P

TIC Top Hit name	RT	EstConc	Units	Response	--Internal Standard--			
					#	RT	Resp	Conc
Benzene, 1,3-dime...	5.19	14.1	ng/ul	1591870	1	7.50	2261760	20.0
o-Xylene	5.56	22.4	ng/ul	2537970	1	7.50	2261760	20.0
Benzene, 1-ethyl-...	6.61	19.3	ng/ul	2184690	1	7.50	2261760	20.0
Benzene, 1,2,3-tr...	6.75	21.2	ng/ul	2401950	1	7.50	2261760	20.0
Mesitylene	7.16	91.1	ng/ul	10298600	1	7.50	2261760	20.0
Benzene, 1,2,4-tr...	7.62	49.0	ng/ul	5540040	1	7.50	2261760	20.0
Indane	7.87	27.7	ng/ul	3127950	1	7.50	2261760	20.0
1-Propyne, 3-phenyl-	8.03	89.4	ng/ul	10110900	1	7.50	2261760	20.0
Benzene, 2-ethyl-...	8.15	33.8	ng/ul	3827040	1	7.50	2261760	20.0
Benzene, 2-ethyl-...	8.46	18.0	ng/ul	2034960	1	7.50	2261760	20.0
o-Cymene	8.50	19.5	ng/ul	2210090	1	7.50	2261760	20.0
(DEL) Alkane: Str...	8.75	36.6	ng/ul	4139390	1	7.50	2261760	20.0
unknown-01	8.85	15.6	ng/ul	1769040	1	7.50	2261760	20.0
Benzene, 4-ethyl-...	8.93	8.2	ng/ul	1936000	2	10.27	4726300	20.0
Benzene, 1,2,4,5-...	9.12	13.0	ng/ul	3074300	2	10.27	4726300	20.0
Benzene, 1,2,3,4-...	9.18	20.4	ng/ul	4812500	2	10.27	4726300	20.0
1H-Indene, 2,3-di...	9.53	6.4	ng/ul	1518050	2	10.27	4726300	20.0
Benzene, 1-methyl...	9.69	29.0	ng/ul	6858180	2	10.27	4726300	20.0
(DEL) Alkane: Str...	11.73	7.1	ng/ul	1670860	2	10.27	4726300	20.0
Naphthalene, 1-me...	12.17	77.2	ng/ul	18237400	2	10.27	4726300	20.0
Naphthalene, 1-et...	13.17	13.1	ng/ul	4629070	3	14.15	7084610	20.0
Naphthalene, 2,6-...	13.30	16.2	ng/ul	5750830	3	14.15	7084610	20.0
Naphthalene, 2,3-...	13.47	45.2	ng/ul	16002800	3	14.15	7084610	20.0
Naphthalene, 1,3-...	13.71	22.4	ng/ul	7919310	3	14.15	7084610	20.0
Naphthalene, 1,5-...	13.74	6.5	ng/ul	2310930	3	14.15	7084610	20.0
Bacchotricuneatin c	14.09	11.0	ng/ul	3901540	3	14.15	7084610	20.0
Naphthalene, 1,6,...	14.45	6.3	ng/ul	2239570	3	14.15	7084610	20.0
Naphthalene, 2,3,...	14.64	14.7	ng/ul	5220630	3	14.15	7084610	20.0
unknown-02	14.70	3.9	ng/ul	1392050	3	14.15	7084610	20.0
Naphthalene, 1,4,...	14.95	17.1	ng/ul	6062640	3	14.15	7084610	20.0
(DEL) Alkane: Str...	15.90	56.2	ng/ul	7066710	4	16.91	2514520	20.0
(DEL) Alkane: Str...	16.70	22.4	ng/ul	2812100	4	16.91	2514520	20.0
(DEL) Alkane: Str...	17.43	13.4	ng/ul	1683700	4	16.91	2514520	20.0
(DEL) Alkane: Str...	18.12	16.2	ng/ul	2034350	4	16.91	2514520	20.0