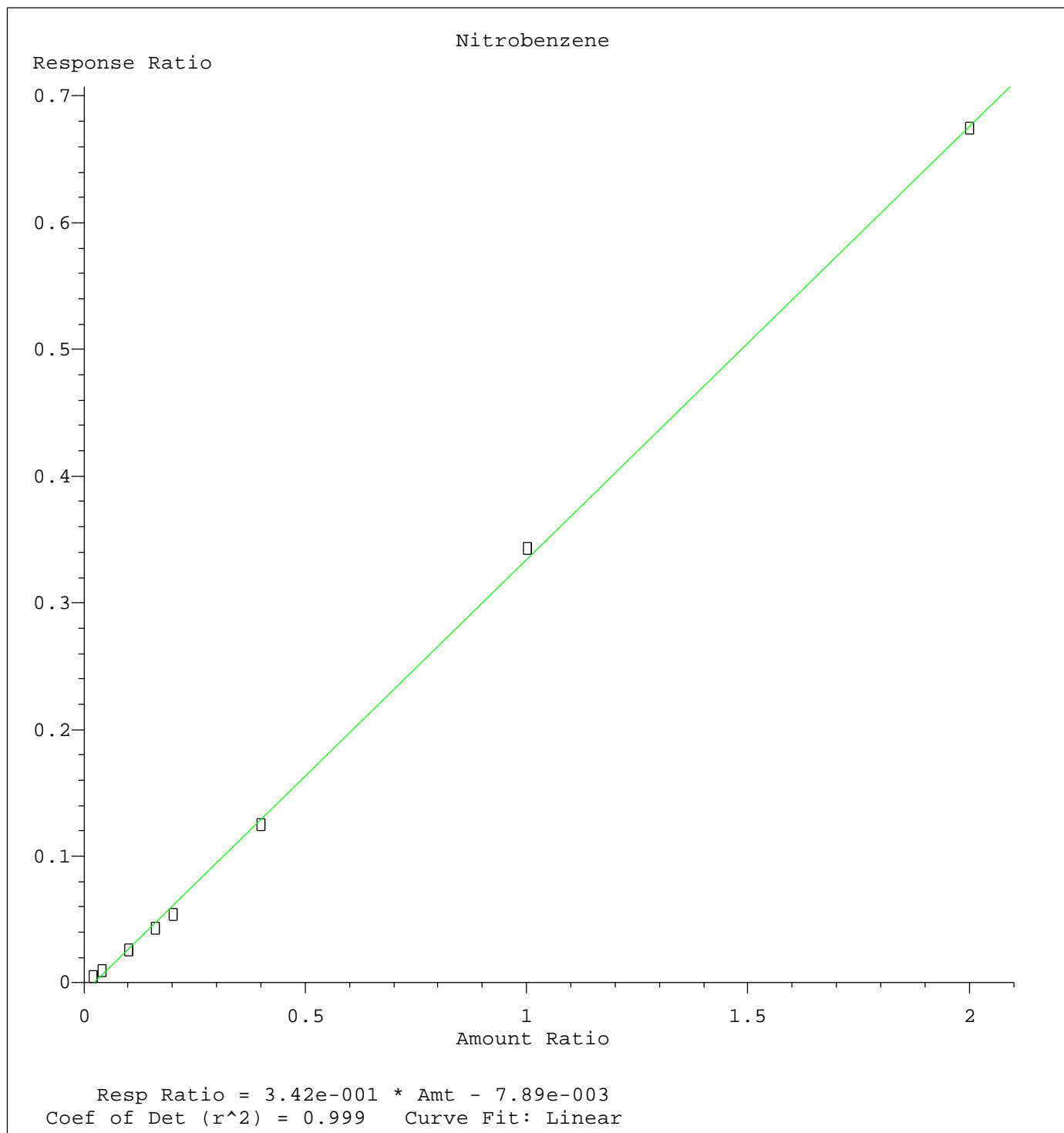
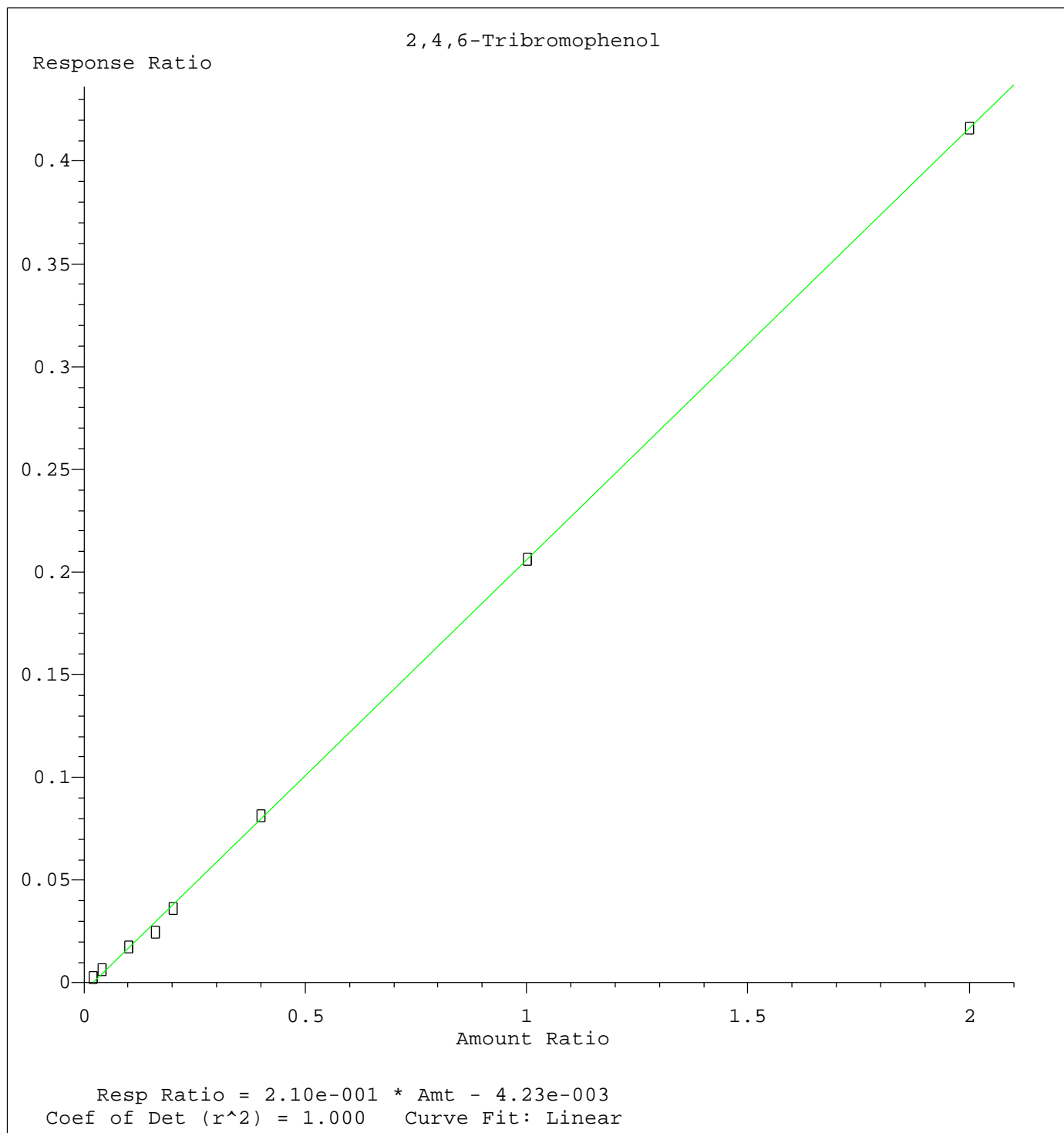


Method Name: Z:\HPCHEM1\BNA_M\METHODS\SIMPAH-BM052015.M
Calibration Table Last Updated: Thu May 21 11:08:14 2015

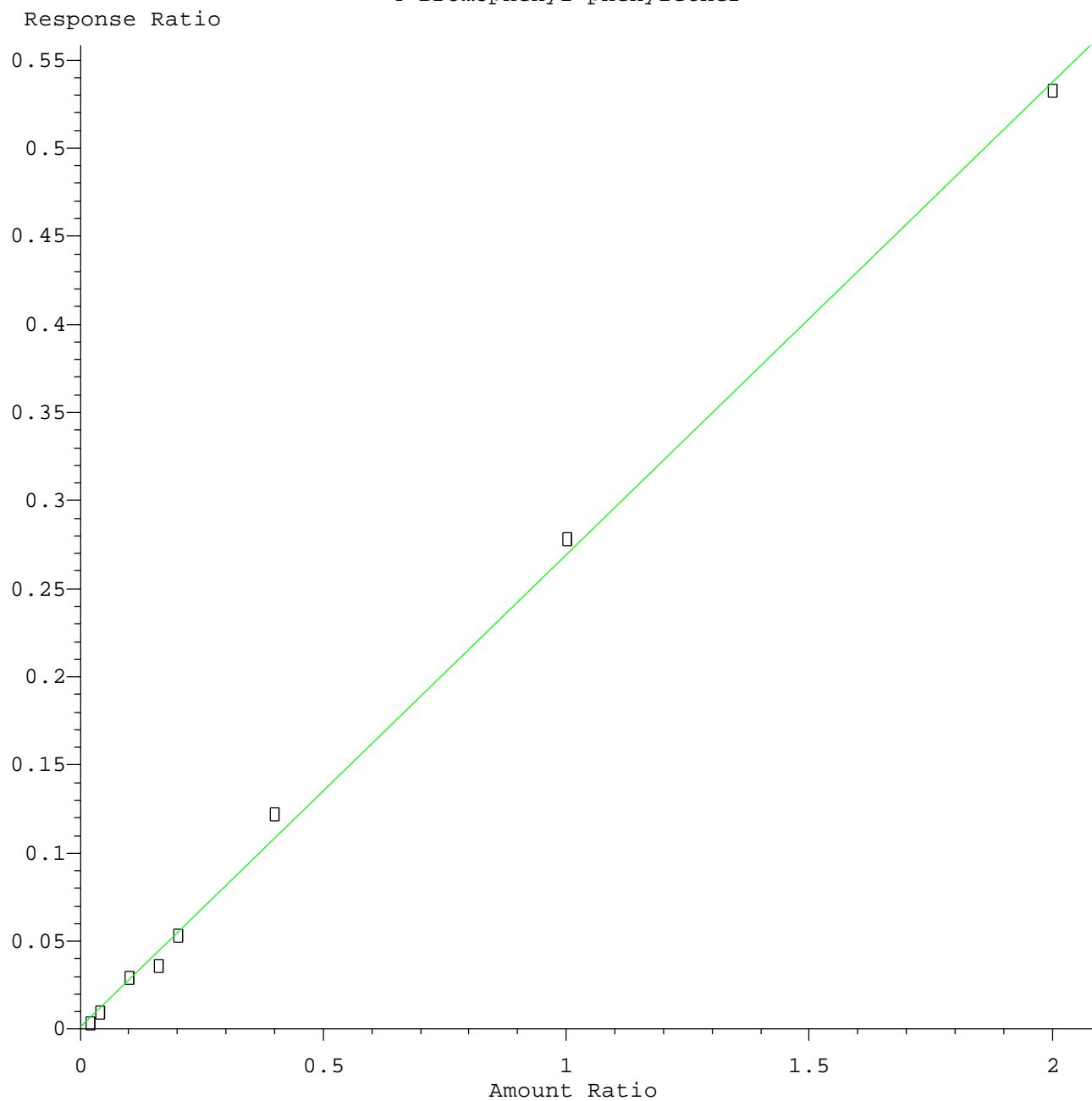


Method Name: Z:\HPCHEM1\BNA_M\METHODS\SIMPAH-BM052015.M
Calibration Table Last Updated: Thu May 21 11:08:14 2015



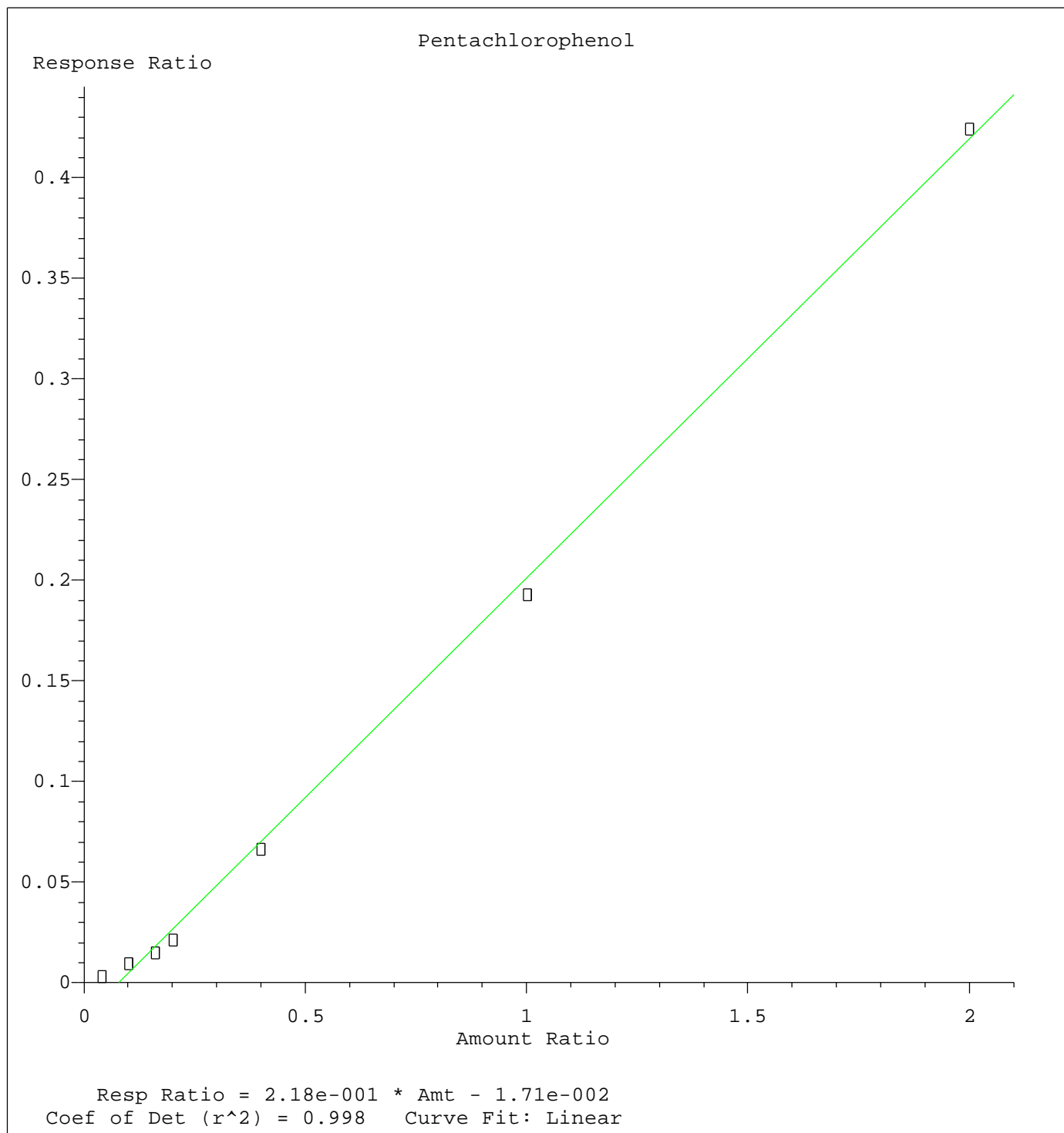
Method Name: Z:\HPCHEM1\BNA_M\METHODS\SIMPAH-BM052015.M
Calibration Table Last Updated: Thu May 21 11:08:14 2015

4-Bromophenyl-phenylether



Resp Ratio = 2.68e-001 * Amt + 1.02e-003
Coef of Det (r^2) = 0.998 Curve Fit: Linear

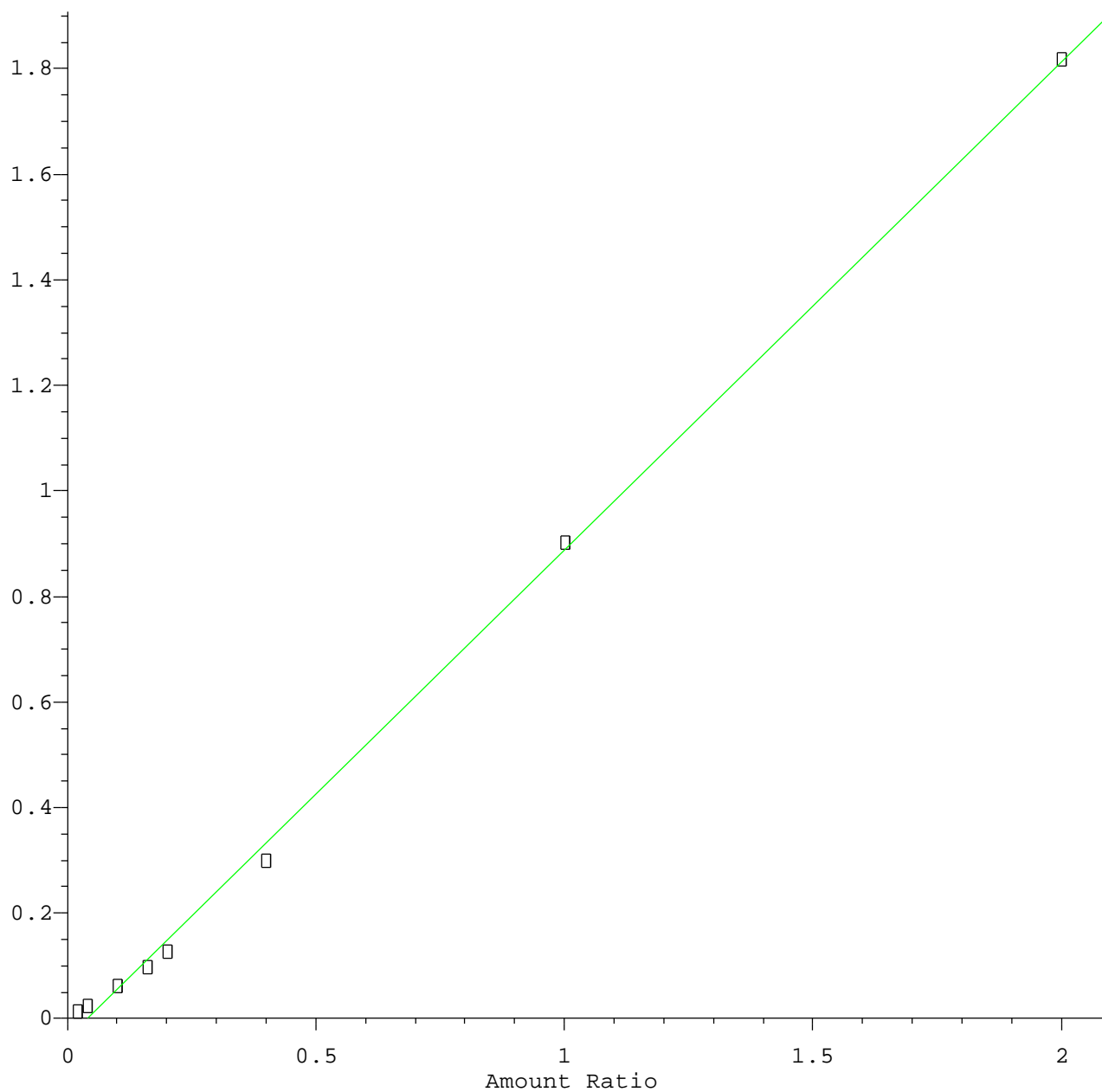
Method Name: Z:\HPCHEM1\BNA_M\METHODS\SIMPAH-BM052015.M
Calibration Table Last Updated: Thu May 21 11:08:14 2015



Method Name: Z:\HPCHEM1\BNA_M\METHODS\SIMPAH-BM052015.M
Calibration Table Last Updated: Thu May 21 11:08:14 2015

Bis(2-ethylhexyl)phthalate

Response Ratio



Resp Ratio = $9.25 \times 10^{-1} \times \text{Amt} - 3.61 \times 10^{-2}$
Coef of Det (r^2) = 0.999 Curve Fit: Linear

Method Name: Z:\HPCHEM1\BNA_M\METHODS\SIMPAH-BM052015.M
Calibration Table Last Updated: Thu May 21 11:08:14 2015