

Data Path : Z:\SVOASRV\HPCHEM1\BNA M\DATA\BM052021\  
 Data File : BM030124.D  
 Acq On : 21 May 2021 22:06  
 Operator : CG/JU  
 Sample : M2474-02  
 Misc :  
 ALS Vial : 40 Sample Multiplier: 1

**Instrument :**  
 BNA\_M  
**ClientSampled :**  
 GB401

**Manual Integrations**  
**APPROVED**  
 mohammad  
 5/24/2021 1:52:59 PM

Quant Time: May 22 00:31:54 2021  
 Quant Method : Z:\SVOASRV\HPCHEM1\BNA\_M\METHODS\SFAM-EPA-BM050721.M  
 Quant Title : SVOA CALIBRATION  
 QLast Update : Fri May 21 23:57:54 2021  
 Response via : Initial Calibration

| Internal Standards        | R.T.  | QIon | Response | Conc  | Units | Dev(Min) |
|---------------------------|-------|------|----------|-------|-------|----------|
| 1) 1,4-Dichlorobenzene-d4 | 7.51  | 152  | 136014   | 20.00 | ng/ul | 0.00     |
| 20) Naphthalene-d8        | 10.28 | 136  | 597184   | 20.00 | ng/ul | 0.00     |
| 38) Acenaphthene-d10      | 14.16 | 164  | 394355   | 20.00 | ng/ul | 0.00     |
| 64) Phenanthrene-d10      | 16.91 | 188  | 788352   | 20.00 | ng/ul | 0.00     |
| 79) Chrysene-d12          | 21.10 | 240  | 672759   | 20.00 | ng/ul | 0.00     |
| 88) Perylene-d12          | 23.24 | 264  | 615852   | 20.00 | ng/ul | 0.00     |

System Monitoring Compounds

|                                |       |     |         |       |       |      |
|--------------------------------|-------|-----|---------|-------|-------|------|
| 3) 1,4-Dioxane-d8              | 3.04  | 96  | 10389   | 3.05  | ng/uL | 0.00 |
| 4) Pyridine-d5                 | 0.00  | 84  | 0d      | 0.00  | ng/ul |      |
| 7) Phenol-d5                   | 6.71  | 99  | 62792   | 4.96  | ng/ul | 0.00 |
| 9) Bis-(2-Chloroethyl)ether-d  | 6.86  | 67  | 217043  | 27.67 | ng/ul | 0.00 |
| 11) 2-Chlorophenol-d4          | 7.05  | 132 | 225622  | 23.11 | ng/ul | 0.00 |
| 15) 4-Methylphenol-d8          | 8.23  | 113 | 128369  | 12.27 | ng/ul | 0.00 |
| 21) Nitrobenzene-d5            | 8.67  | 128 | 131922  | 32.06 | ng/ul | 0.00 |
| 24) 2-Nitrophenol-d4           | 9.38  | 143 | 146536  | 31.55 | ng/ul | 0.00 |
| 28) 2,4-Dichlorophenol-d3      | 9.92  | 165 | 233507  | 25.07 | ng/ul | 0.00 |
| 31) 4-Chloroaniline-d4         | 10.50 | 131 | 13447m  | 0.95  | ng/ul | 0.06 |
| 46) Dimethylphthalate-d6       | 13.59 | 166 | 974253  | 31.87 | ng/ul | 0.00 |
| 49) Acenaphthylene-d8          | 13.85 | 160 | 1170422 | 30.21 | ng/ul | 0.00 |
| 54) 4-Nitrophenol-d4           | 14.47 | 143 | 12200m  | 2.45  | ng/ul | 0.07 |
| 60) Fluorene-d10               | 15.16 | 176 | 855384  | 32.96 | ng/ul | 0.00 |
| 65) 4,6-Dinitro-2-methylphenol | 15.30 | 200 | 162348  | 31.70 | ng/ul | 0.00 |
| 73) Anthracene-d10             | 17.01 | 188 | 1420207 | 35.77 | ng/ul | 0.00 |
| 81) Pyrene-d10                 | 19.31 | 212 | 1583971 | 45.90 | ng/ul | 0.00 |
| 92) Benzo(a)pyrene-d12         | 23.11 | 264 | 1297501 | 37.17 | ng/ul | 0.00 |

Target Compounds

| Target Compounds      | R.T.  | QIon | Response | Conc  | Units | Ovalue |
|-----------------------|-------|------|----------|-------|-------|--------|
| 47) Dimethylphthalate | 13.63 | 163  | 54656    | 1.786 | ng/ul | 99     |

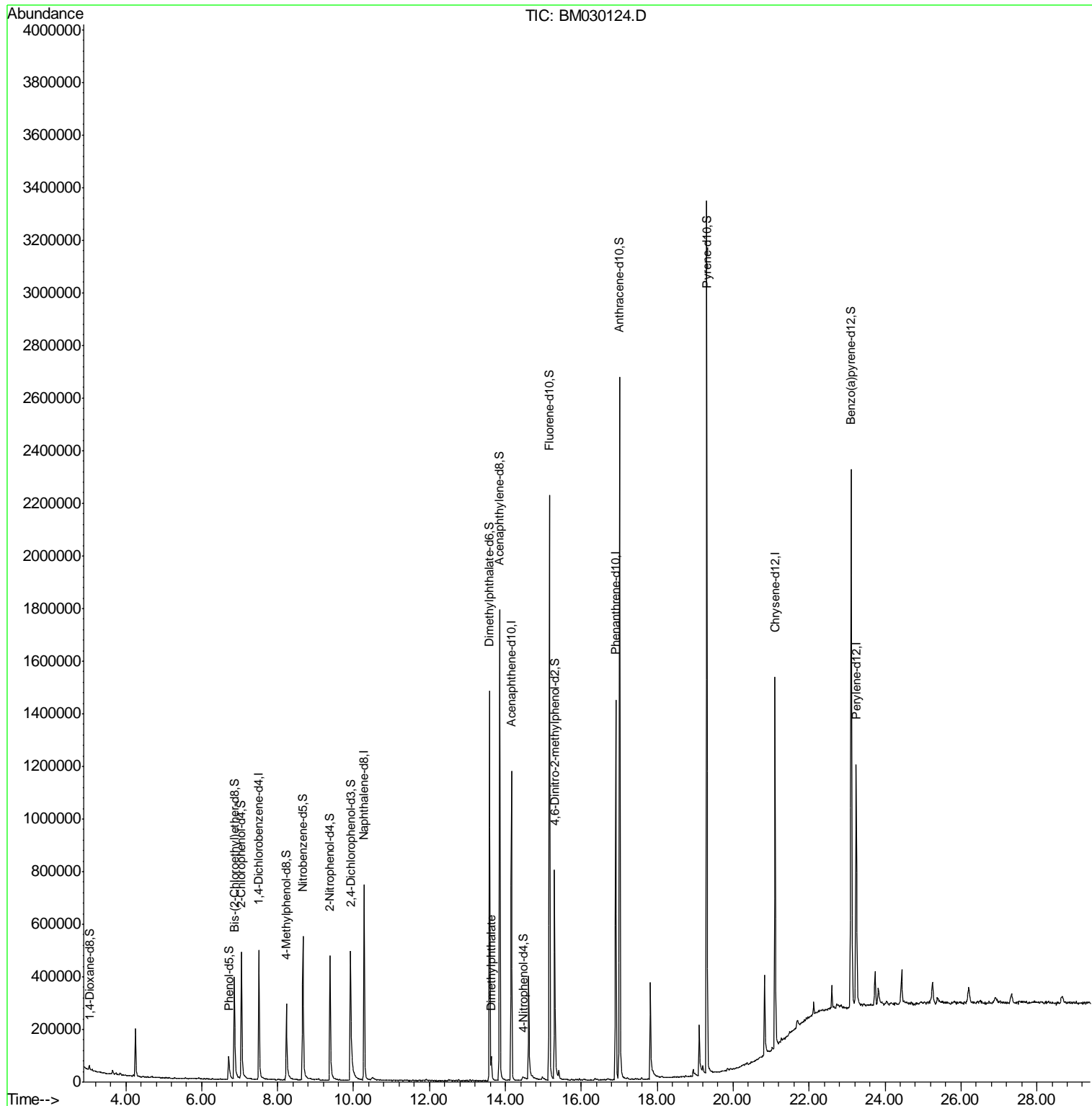
(#) = qualifier out of range (m) = manual integration (+) = signals summed

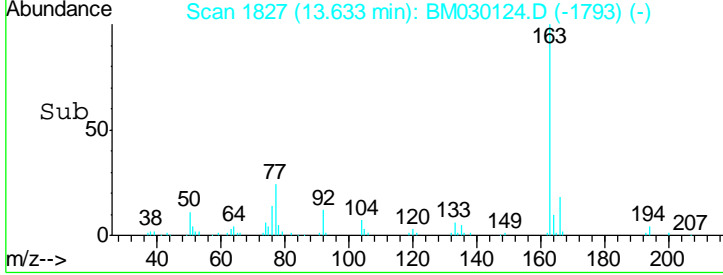
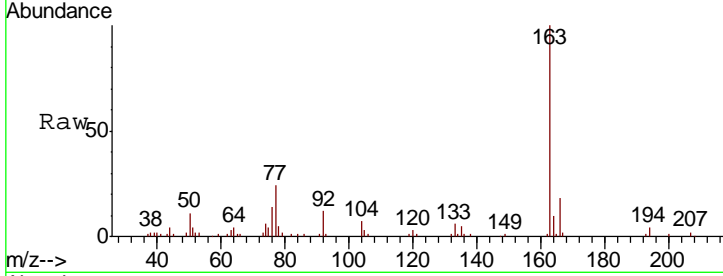
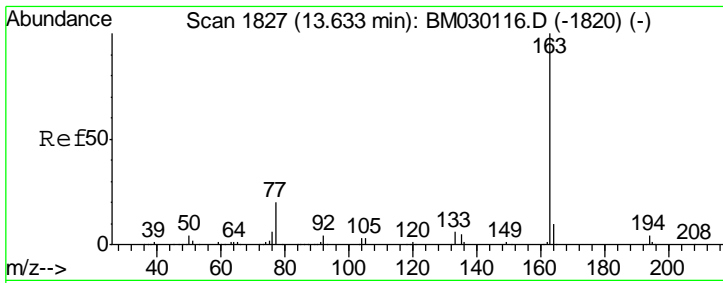
Data Path : Z:\SVOASRV\HPCHEM1\BNA M\DATA\BM052021\  
 Data File : BM030124.D  
 Acq On : 21 May 2021 22:06  
 Operator : CG/JU  
 Sample : M2474-02  
 Misc :  
 ALS Vial : 40 Sample Multiplier: 1

**Instrument :**  
 BNA\_M  
**Client Sampled :**  
 GB401

**Manual Integrations**  
**APPROVED**  
 mohammad  
 5/24/2021 1:52:59 PM

Quant Time: May 22 00:31:54 2021  
 Quant Method : Z:\SVOASRV\HPCHEM1\BNA\_M\METHODS\SFAM-EPA-BM050721.M  
 Quant Title : SVOA CALIBRATION  
 QLast Update : Fri May 21 23:57:54 2021  
 Response via : Initial Calibration





#47  
 Dimethylphthalate  
 Concen: 1.786 ng/ul  
 RT: 13.63 min Scan# 1827  
 Delta R.T. 0.00 min  
 Lab File: BM030124.D  
 Acq: 21 May 2021 22:06

| Tot Ion | Ratio | Lower | Upper |
|---------|-------|-------|-------|
| 163     | 100   |       |       |
| 194     | 4.3   | 3.4   | 5.0   |
| 164     | 10.2  | 7.8   | 11.8  |

**Instrument :**  
 BNA\_M  
**ClientSampled :**  
 GB401

**Manual Integrations**  
**APPROVED**  
 mohammad  
 5/24/2021 1:52:59 PM

