

Data Path : Z:\svoasrv\HPCHEM1\BNA_M\Data\BM052022\
 Data File : BM035185.D
 Acq On : 20 May 2022 20:24
 Operator : CG/JU
 Sample : N2880-02
 Misc :
 ALS Vial : 17 Sample Multiplier: 1

Instrument :
 BNA_M
 ClientSampleId :
 EFF-WW

Manual Integrations
 APPROVED

Reviewed By : Christian Giraldo 05/23/2022
 Supervised By : Jagrut Upadhyay 05/25/2022

Quant Time: May 23 04:21:34 2022
 Quant Method : Z:\svoasrv\HPCHEM1\BNA_M\Methods\8270-BM042722.M
 Quant Title : ASP BNA STANDARDS FOR 5 POINT CALIBRATION
 QLast Update : Fri May 20 04:53:59 2022
 Response via : Initial Calibration

Compound	R.T.	QIon	Response	Conc	Units	Dev(Min)
Internal Standards						
1) 1,4-Dichlorobenzene-d4	7.904	152	125072	20.000	ng	0.00
21) Naphthalene-d8	10.704	136	487659	20.000	ng	0.00
39) Acenaphthene-d10	14.539	164	322776	20.000	ng	0.00
64) Phenanthrene-d10	17.380	188	665522	20.000	ng	0.09
76) Chrysene-d12	21.486	240	668021	20.000	ng	# 0.01
86) Perylene-d12	23.868	264	670602	20.000	ng	0.01
System Monitoring Compounds						
5) 2-Fluorophenol	5.493	112	203729	28.737	ng	0.01
7) Phenol-d6	7.081	99	257871	28.177	ng	0.00
23) Nitrobenzene-d5	9.063	82	637675	70.614	ng	0.00
42) 2,4,6-Tribromophenol	16.057	330	176865m	50.372	ng	0.02
45) 2-Fluorobiphenyl	13.169	172	1369689	61.601	ng	0.00
79) Terphenyl-d14	19.921	244	878002	25.448	ng	0.00

Target Compounds Qvalue

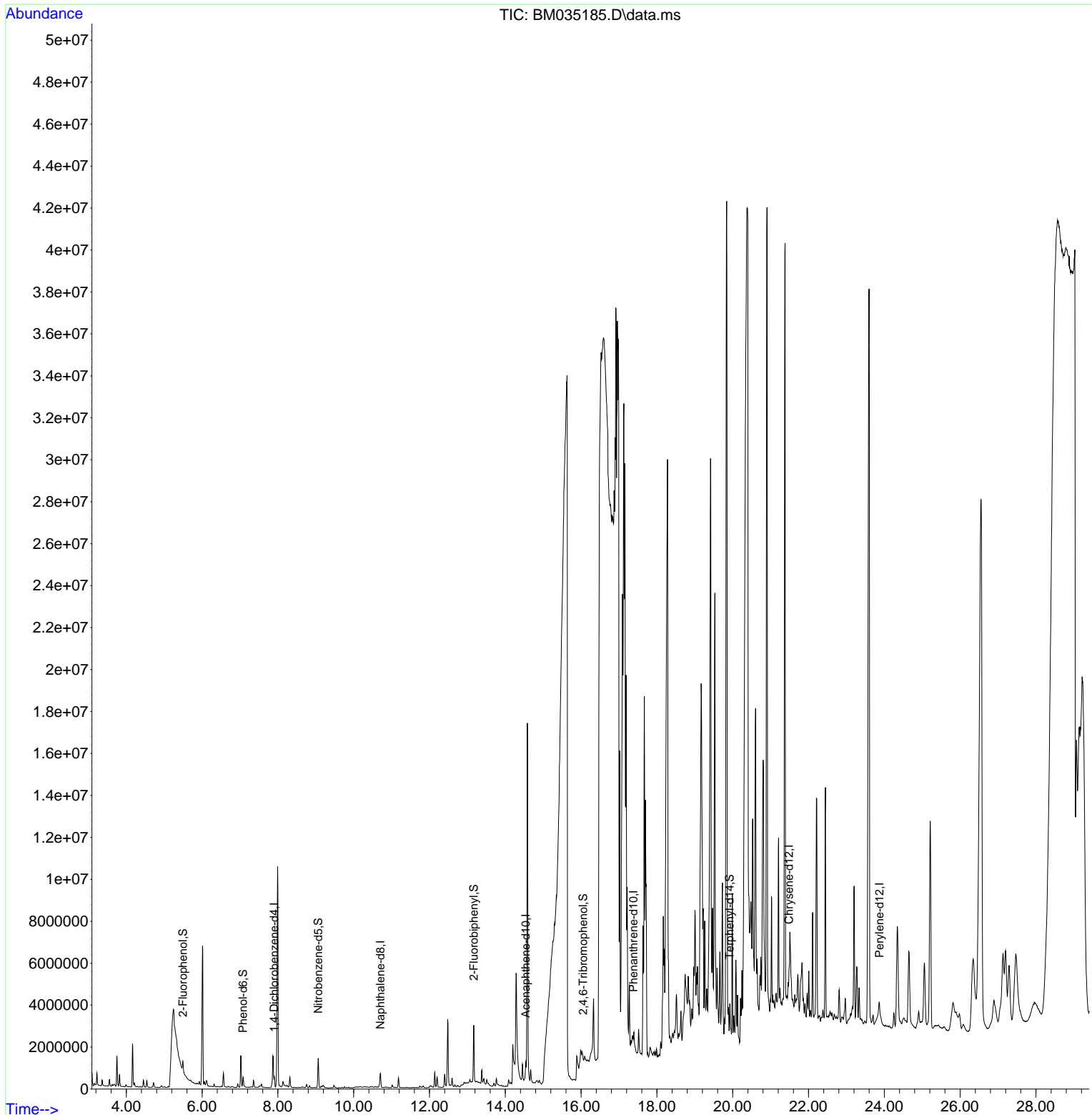
(#) = qualifier out of range (m) = manual integration (+) = signals summed

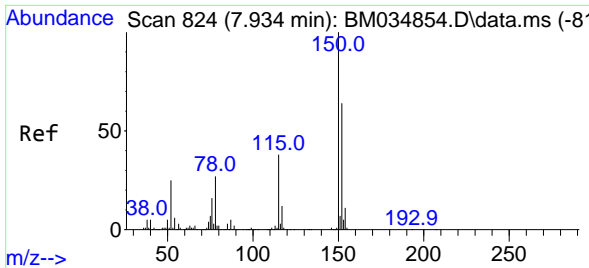
Data Path : Z:\svoasrv\HPCHEM1\BNA_M\Data\BM052022\
 Data File : BM035185.D
 Acq On : 20 May 2022 20:24
 Operator : CG/JU
 Sample : N2880-02
 Misc :
 ALS Vial : 17 Sample Multiplier: 1

Instrument :
 BNA_M
ClientSampleId :
 EFF-WW

Quant Time: May 23 04:21:34 2022
 Quant Method : Z:\svoasrv\HPCHEM1\BNA_M\Methods\8270-BM042722.M
 Quant Title : ASP BNA STANDARDS FOR 5 POINT CALIBRATION
 QLast Update : Fri May 20 04:53:59 2022
 Response via : Initial Calibration

Manual Integrations
APPROVED
 Reviewed By :Christian Giraldo 05/23/2022
 Supervised By :Jagrut Upadhyay 05/25/2022





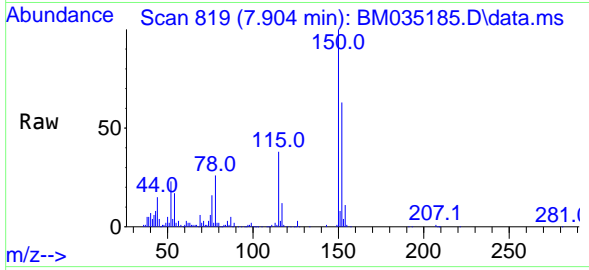
#1
 1,4-Dichlorobenzene-d4
 Concen: 20.000 ng
 RT: 7.904 min Scan# 819
 Delta R.T. 0.000 min
 Lab File: BM035185.D
 Acq: 20 May 2022 20:24

Instrument :

BNA_M

ClientSampleId :

EFF-WW

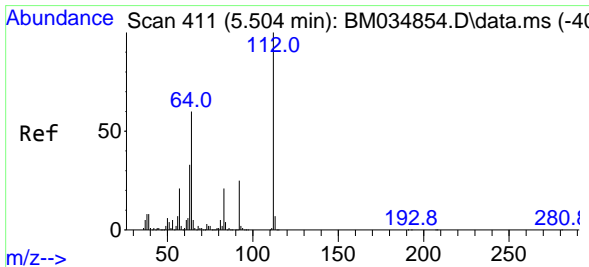
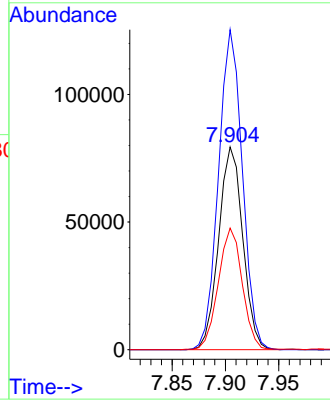
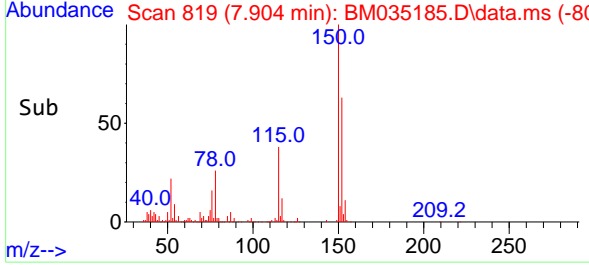


Tgt Ion:152 Resp: 125072
 Ion Ratio Lower Upper
 152 100
 150 157.8 124.9 187.3
 115 60.0 47.9 71.9

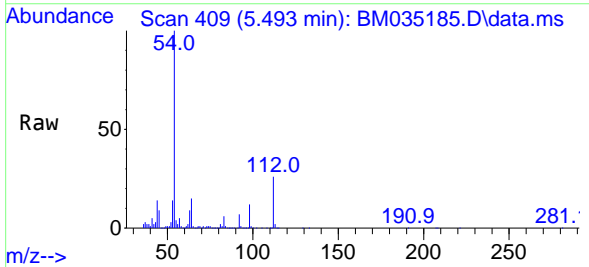
Manual Integrations

APPROVED

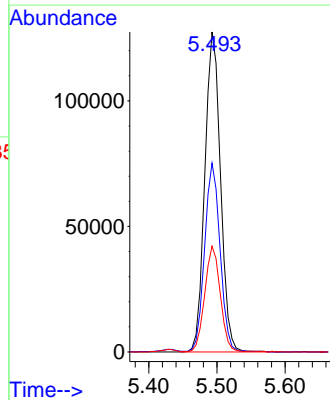
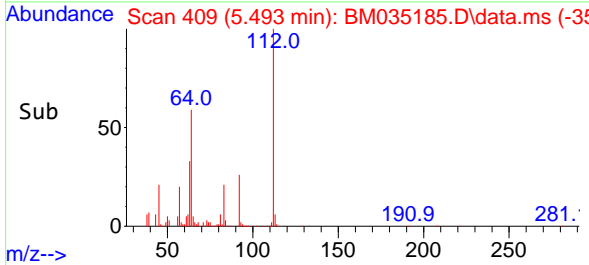
Reviewed By :Christian Giraldo 05/23/2022
 Supervised By :Jagrut Upadhyay 05/25/2022

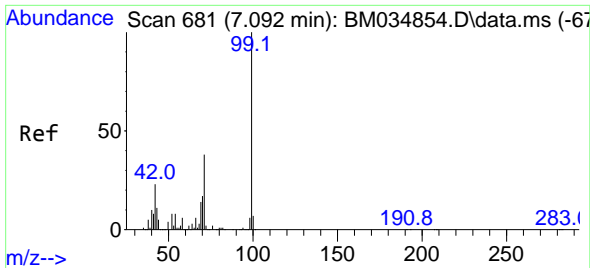


#5
 2-Fluorophenol
 Concen: 28.737 ng
 RT: 5.493 min Scan# 409
 Delta R.T. 0.012 min
 Lab File: BM035185.D
 Acq: 20 May 2022 20:24



Tgt Ion:112 Resp: 203729
 Ion Ratio Lower Upper
 112 100
 64 59.0 47.8 71.6
 63 33.0 26.6 40.0





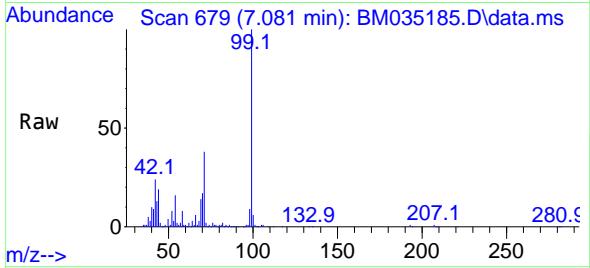
#7
Phenol-d6
Concen: 28.177 ng
RT: 7.081 min Scan# 61
Delta R.T. 0.006 min
Lab File: BM035185.D
Acq: 20 May 2022 20:24

Instrument :

BNA_M

ClientSampleId :

EFF-WW

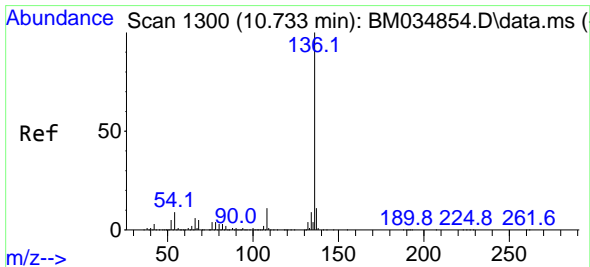
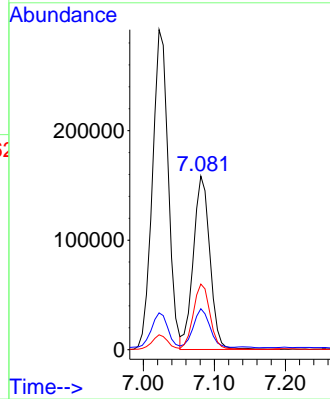
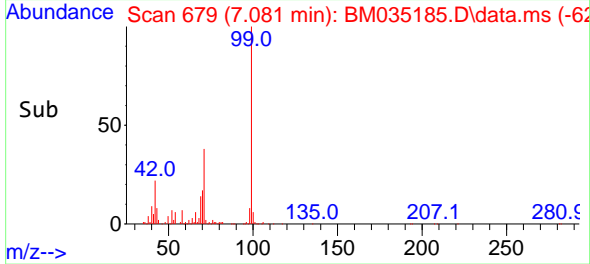


Tgt Ion: 99 Resp: 25787
Ion Ratio Lower Upper
99 100
42 23.6 18.8 28.2
71 37.8 30.2 45.2

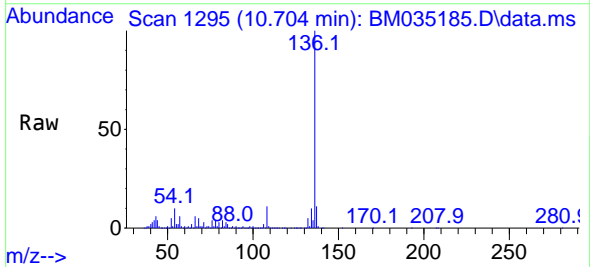
Manual Integrations

APPROVED

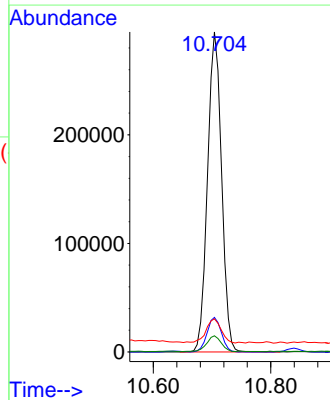
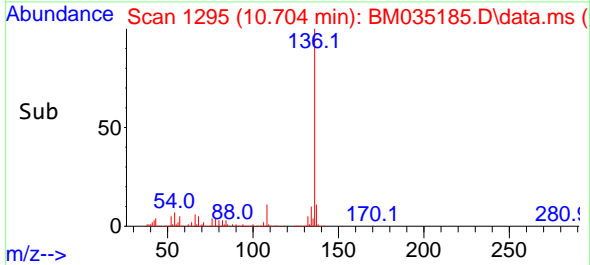
Reviewed By :Christian Giraldo 05/23/2022
Supervised By :Jagrut Upadhyay 05/25/2022

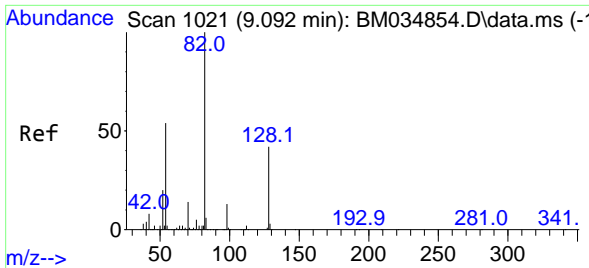


#21
Naphthalene-d8
Concen: 20.000 ng
RT: 10.704 min Scan# 1295
Delta R.T. -0.006 min
Lab File: BM035185.D
Acq: 20 May 2022 20:24



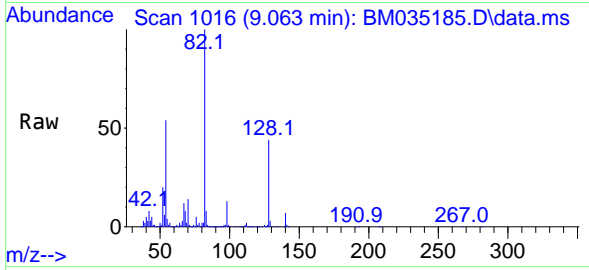
Tgt Ion:136 Resp: 487659
Ion Ratio Lower Upper
136 100
137 10.8 8.9 13.3
54 10.4 7.0 10.4
68 5.0 4.3 6.5





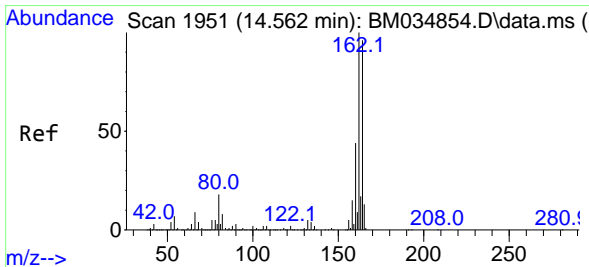
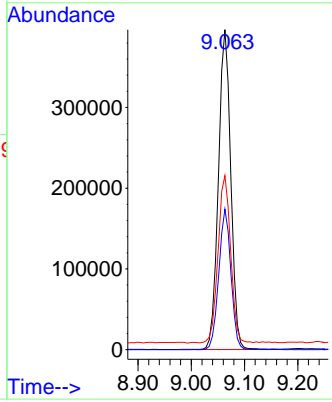
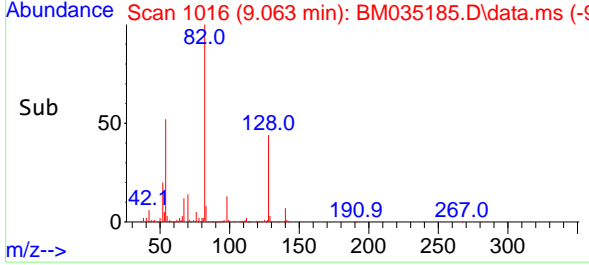
#23
 Nitrobenzene-d5
 Concen: 70.614 ng
 RT: 9.063 min Scan# 10
 Delta R.T. 0.000 min
 Lab File: BM035185.D
 Acq: 20 May 2022 20:24

Instrument : BNA_M
 ClientSampleId : EFF-WW

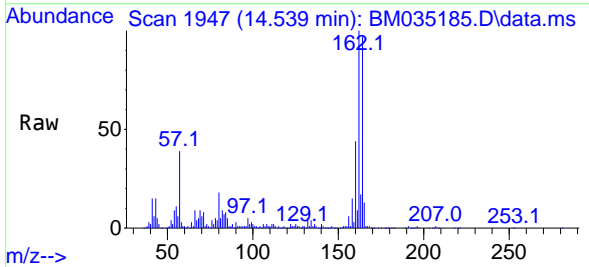


Tgt Ion: 82 Resp: 63767
 Ion Ratio Lower Upper
 82 100
 128 43.9 33.7 50.5
 54 54.4 43.2 64.8

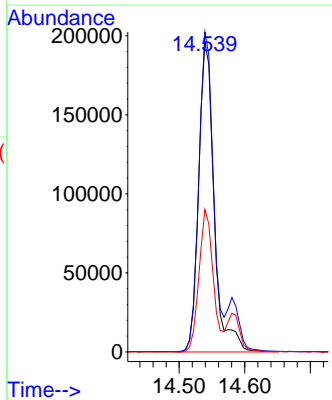
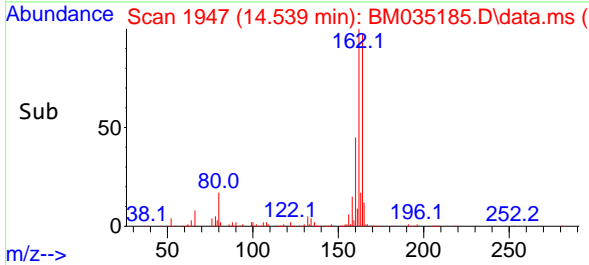
Manual Integrations
APPROVED
 Reviewed By :Christian Giraldo 05/23/2022
 Supervised By :Jagrut Upadhyay 05/25/2022

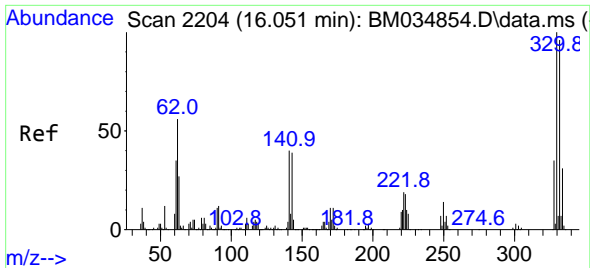


#39
 Acenaphthene-d10
 Concen: 20.000 ng
 RT: 14.539 min Scan# 1947
 Delta R.T. -0.006 min
 Lab File: BM035185.D
 Acq: 20 May 2022 20:24



Tgt Ion:164 Resp: 322776
 Ion Ratio Lower Upper
 164 100
 162 103.4 83.0 124.6
 160 46.0 37.0 55.4





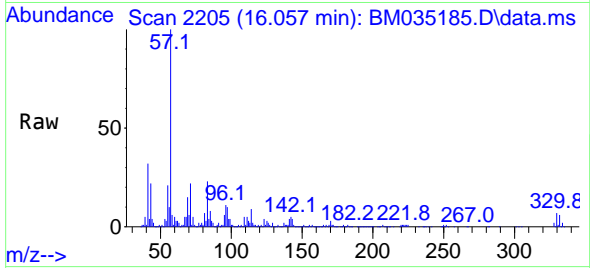
#42
 2,4,6-Tribromophenol
 Concen: 50.372 ng m
 RT: 16.057 min Scan# 21
 Delta R.T. 0.024 min
 Lab File: BM035185.D
 Acq: 20 May 2022 20:24

Instrument :

BNA_M

Client Sample Id :

EFF-WW

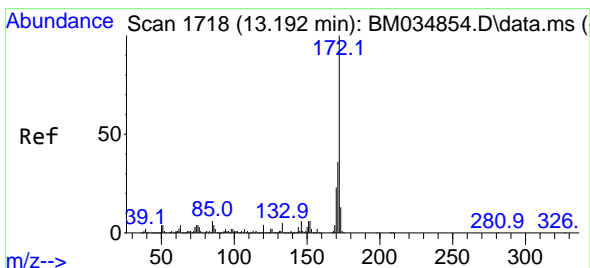
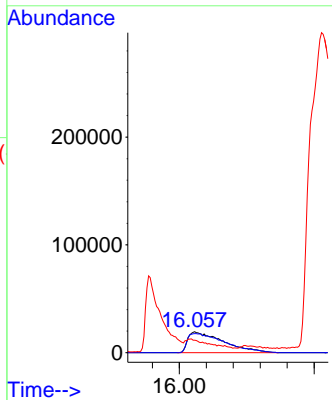
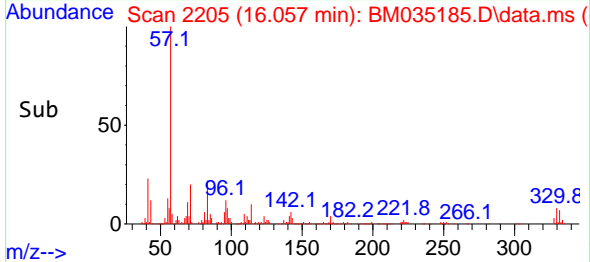


Tgt Ion: 330 Resp: 17686
 Ion Ratio Lower Upper
 330 100
 332 95.9 77.0 115.4
 141 30.8 35.3 52.9

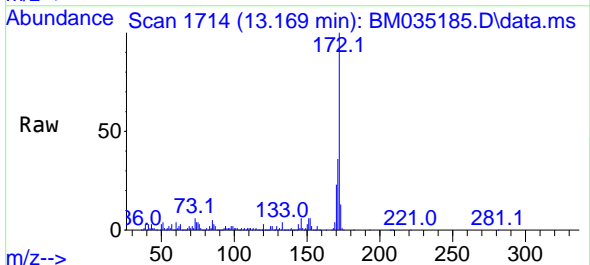
Manual Integrations

APPROVED

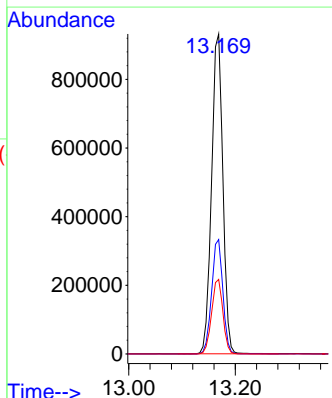
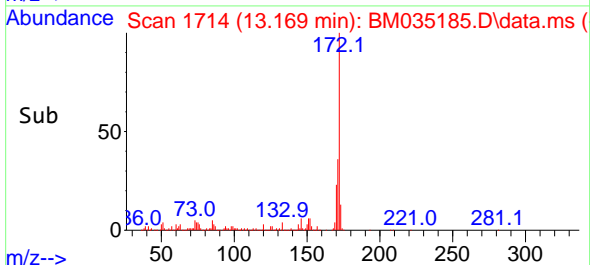
Reviewed By : Christian Giraldo 05/23/2022
 Supervised By : Jagrut Upadhyay 05/25/2022

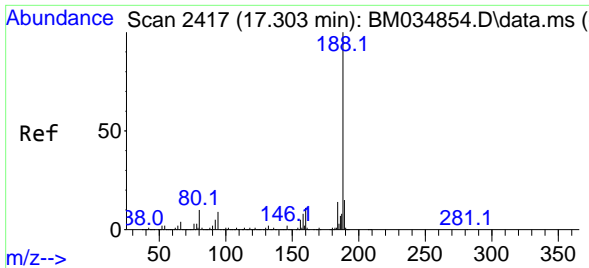


#45
 2-Fluorobiphenyl
 Concen: 61.601 ng
 RT: 13.169 min Scan# 1714
 Delta R.T. 0.000 min
 Lab File: BM035185.D
 Acq: 20 May 2022 20:24



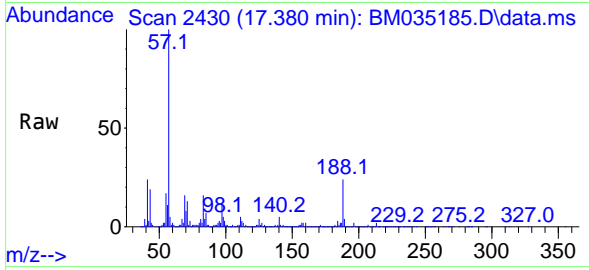
Tgt Ion: 172 Resp: 1369689
 Ion Ratio Lower Upper
 172 100
 171 35.7 28.5 42.7
 170 23.3 18.7 28.1





#64
 Phenanthrene-d10
 Concen: 20.000 ng
 RT: 17.380 min Scan# 2417
 Delta R.T. 0.094 min
 Lab File: BM035185.D
 Acq: 20 May 2022 20:24

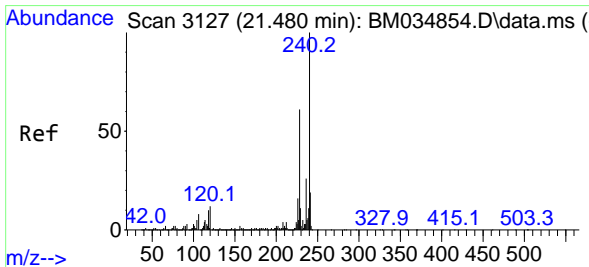
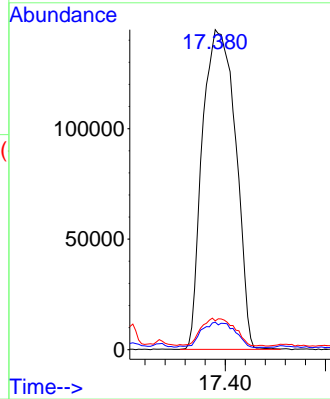
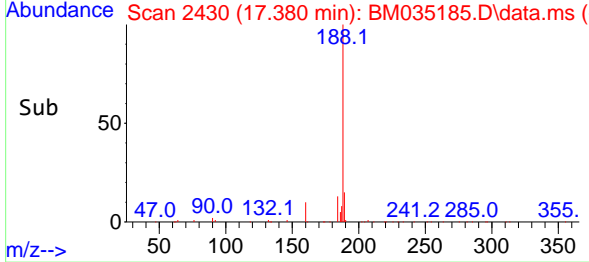
Instrument :
 BNA_M
 ClientSampleId :
 EFF-WW



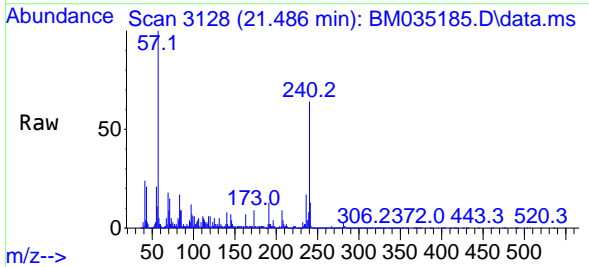
Tgt Ion:188 Resp: 66552
 Ion Ratio Lower Upper
 188 100
 94 8.6 7.0 10.4
 80 9.0 7.6 11.4

Manual Integrations
 APPROVED

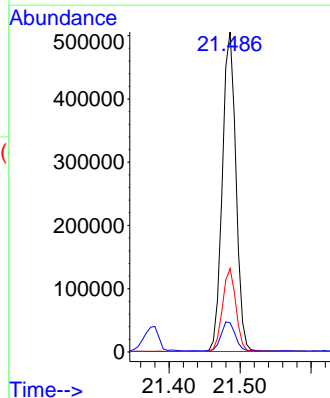
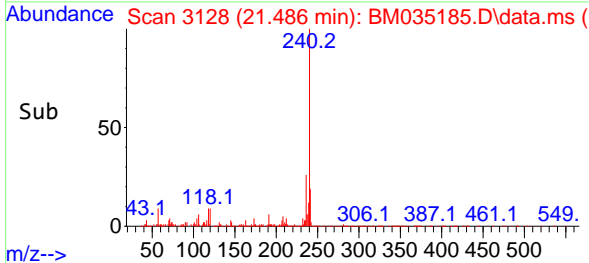
Reviewed By :Christian Giraldo 05/23/2022
 Supervised By :Jagrut Upadhyay 05/25/2022

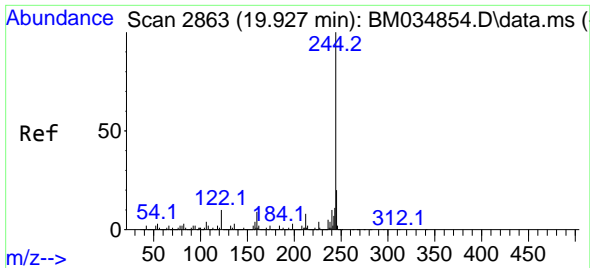


#76
 Chrysene-d12
 Concen: 20.000 ng
 RT: 21.486 min Scan# 3128
 Delta R.T. 0.012 min
 Lab File: BM035185.D
 Acq: 20 May 2022 20:24



Tgt Ion:240 Resp: 668021
 Ion Ratio Lower Upper
 240 100
 120 9.1 9.4 14.0#
 236 26.0 20.6 30.8





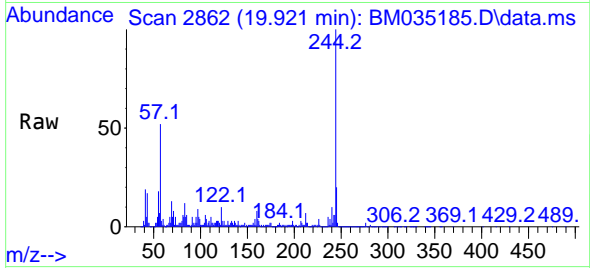
#79
 Terphenyl-d14
 Concen: 25.448 ng
 RT: 19.921 min Scan# 21
 Delta R.T. 0.006 min
 Lab File: BM035185.D
 Acq: 20 May 2022 20:24

Instrument :

BNA_M

ClientSampleId :

EFF-WW

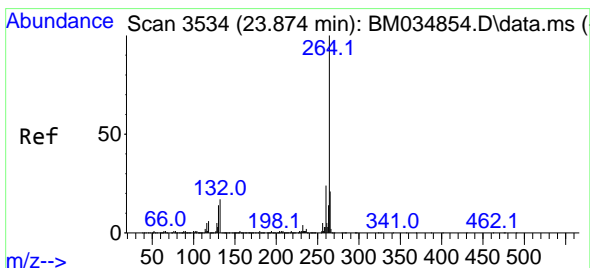
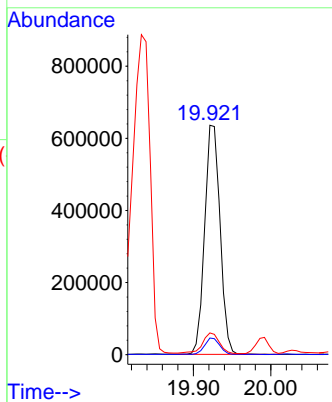
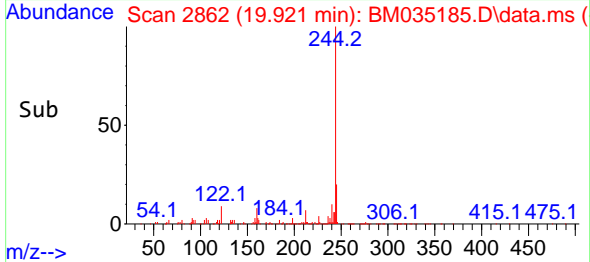


Tgt Ion:244 Resp: 87800
 Ion Ratio Lower Upper
 244 100
 212 7.3 6.2 9.4
 122 9.5 8.3 12.5

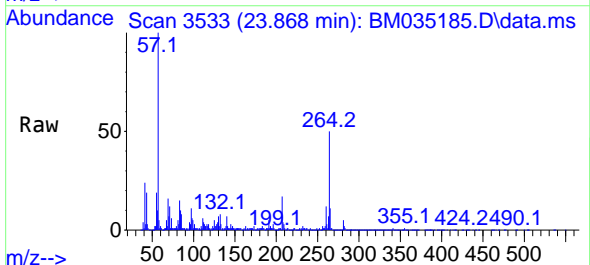
Manual Integrations

APPROVED

Reviewed By :Christian Giraldo 05/23/2022
 Supervised By :Jagrut Upadhyay 05/25/2022



#86
 Perylene-d12
 Concen: 20.000 ng
 RT: 23.868 min Scan# 3533
 Delta R.T. 0.012 min
 Lab File: BM035185.D
 Acq: 20 May 2022 20:24



Tgt Ion:264 Resp: 670602
 Ion Ratio Lower Upper
 264 100
 260 23.9 18.9 28.3
 265 22.9 17.5 26.3

