

Data Path : Z:\HPCHEM1\BNA_M\DATA\BM052116\
 Data File : BM005560.D
 Acq On : 21 May 2016 20:58
 Operator : UM/SJ
 Sample : H3086-08
 Misc :
 ALS Vial : 11 Sample Multiplier: 1

Instrument :
 BNA_M
 ClientSampleId :
 JHGJ8

Quant Time: May 22 05:10:08 2016
 Quant Method : Z:\HPCHEM1\BNA_M\METHODS\SOM02.2-EPA-BM052016.M
 Quant Title : SVOA CALIBRATION
 QLast Update : Sun May 22 05:09:34 2016
 Response via : Initial Calibration

Internal Standards	R.T.	QIon	Response	Conc	Units	Dev(Min)
1) 1,4-Dichlorobenzene-d4	7.82	152	85105	20.00	ng/ul	0.00
18) Naphthalene-d8	10.61	136	341177	20.00	ng/ul	0.00
35) Acenaphthene-d10	14.46	164	185407	20.00	ng/ul	0.00
61) Phenanthrene-d10	17.20	188	396833	20.00	ng/ul	0.00
75) Chrysene-d12	21.37	240	525305	20.00	ng/ul	0.00
83) Perylene-d12	23.64	264	556808	20.00	ng/ul	0.00

System Monitoring Compounds

3) 1,4-Dioxane-d8	3.30	96	5349	2.75	ng/uL	0.00
5) Phenol-d5	6.98	99	114320	16.39	ng/ul	0.00
7) Bis-(2-Chloroethyl)ether-d	7.15	67	74479	18.42	ng/ul	0.00
9) 2-Chlorophenol-d4	7.35	132	98172	16.87	ng/ul	0.00
13) 4-Methylphenol-d8	8.52	113	82012	14.35	ng/ul	0.00
19) Nitrobenzene-d5	8.97	128	45809	17.56	ng/ul	0.00
22) 2-Nitrophenol-d4	9.69	143	49099	17.10	ng/ul	0.00
26) 2,4-Dichlorophenol-d3	10.23	165	93278	17.25	ng/ul	0.00
29) 4-Chloroaniline-d4	10.75	131	138296	25.53	ng/ul	0.00
43) Dimethylphthalate-d6	13.86	166	271573	17.94	ng/ul	0.00
46) Acenaphthylene-d8	14.15	160	353325	18.67	ng/ul	0.00
51) 4-Nitrophenol-d4	14.65	143	50664	17.70	ng/ul	0.00
57) Fluorene-d10	15.45	176	251497	19.10	ng/ul	0.00
62) 4,6-Dinitro-2-methylphenol	15.56	200	39494	17.30	ng/ul	0.00
70) Anthracene-d10	17.30	188	377271	19.96	ng/ul	0.00
76) Pyrene-d10	19.59	212	447121	18.80	ng/ul	0.00
87) Benzo(a)pyrene-d12	23.50	264	497668	19.14	ng/ul	0.00

Target Compounds

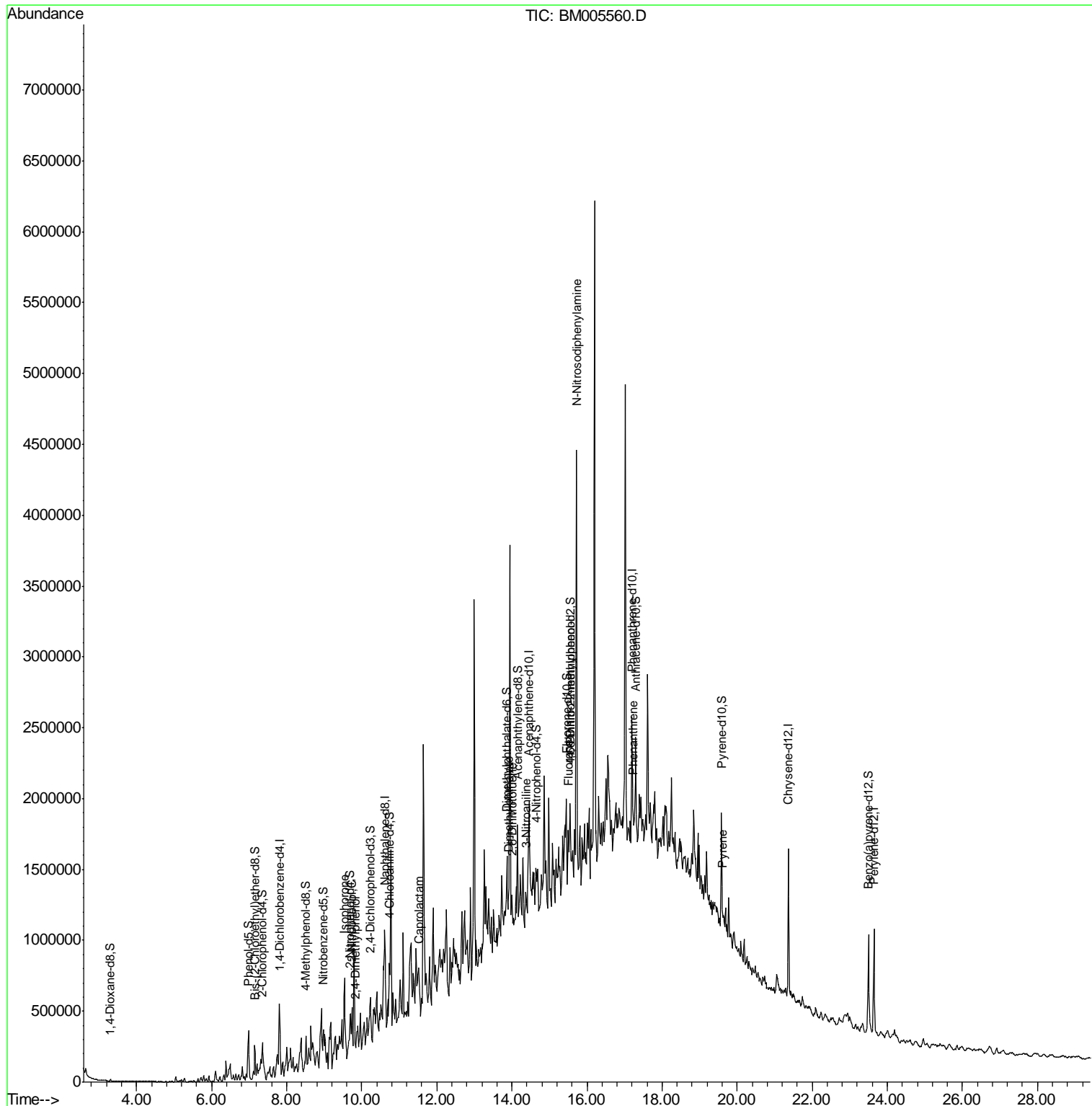
					Qvalue
21) Isophorone	9.54	82	62222	5.27	ng/ul# 1
23) 2-Nitrophenol	9.74	139	5259	1.70	ng/ul# 1
24) 2,4-Dimethylphenol	9.83	107	13793	2.16	ng/ul 89
32) Caprolactam	11.55	113	2044	1.15	ng/ul# 1
44) Dimethylphthalate	13.91	163	47131	3.15	ng/ul# 78
45) 2,6-Dinitrotoluene	14.01	165	4016	1.33	ng/ul# 26
48) 3-Nitroaniline	14.37	138	5203	1.86	ng/ul# 33
58) Fluorene	15.50	166	20922	1.44	ng/ul# 57
63) 4,6-Dinitro-2-methylphenol	15.55	198	2961	1.24	ng/ul# 1
64) N-Nitrosodiphenylamine	15.72	169	96824	8.04	ng/ul# 43
69) Phenanthrene	17.24	178	32857	1.48	ng/ul# 42
77) Pyrene	19.62	202	35779	1.18	ng/ul# 88

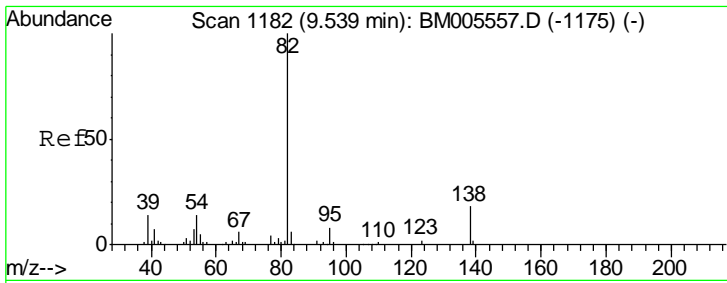
(#) = qualifier out of range (m) = manual integration (+) = signals summed

Data Path : Z:\HPCHEM1\BNA_M\DATA\BM052116\
 Data File : BM005560.D
 Acq On : 21 May 2016 20:58
 Operator : UM/SJ
 Sample : H3086-08
 Misc :
 ALS Vial : 11 Sample Multiplier: 1

Instrument :
 BNA_M
 ClientSampled :
 JHGJ8

Quant Time: May 22 05:10:08 2016
 Quant Method : Z:\HPCHEM1\BNA_M\METHODS\SOM02.2-EPA-BM052016.M
 Quant Title : SVOA CALIBRATION
 QLast Update : Sun May 22 05:09:34 2016
 Response via : Initial Calibration

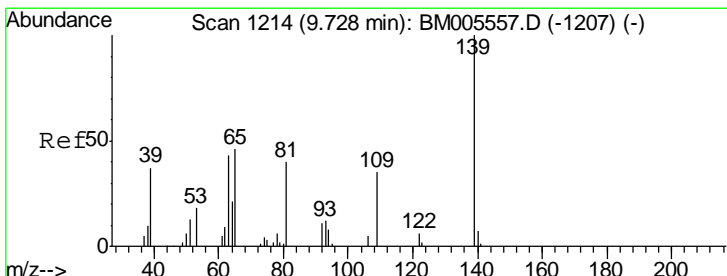
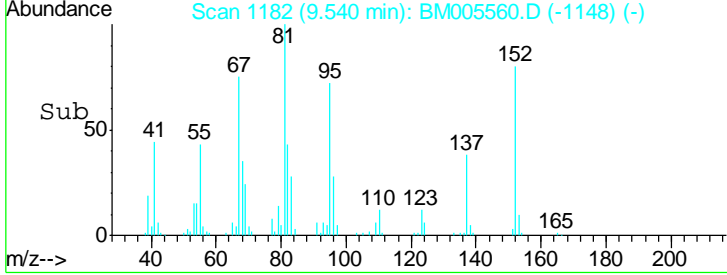
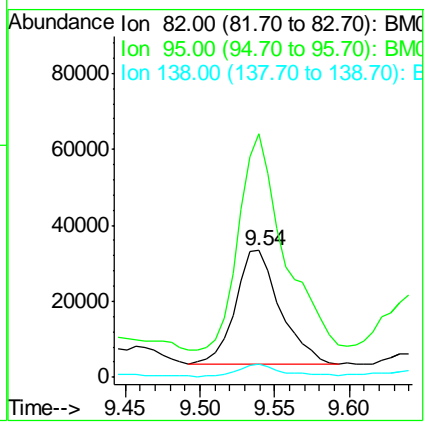
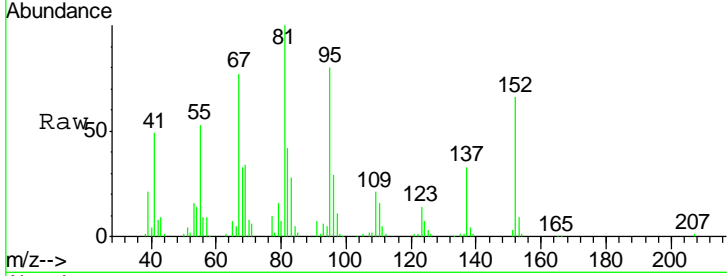




#21
 Isophorone
 Concen: 5.27 ng/ul
 RT: 9.54 min Scan# 1182
 Delta R.T. 0.00 min
 Lab File: BM005560.D
 Acq: 21 May 2016 20:58

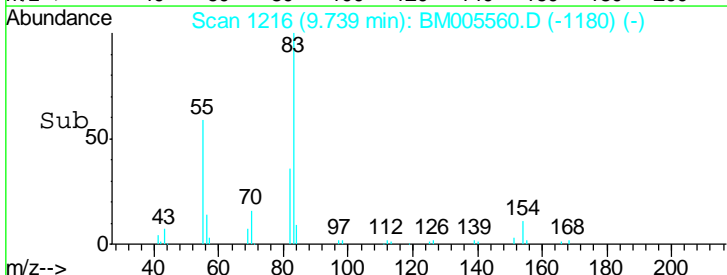
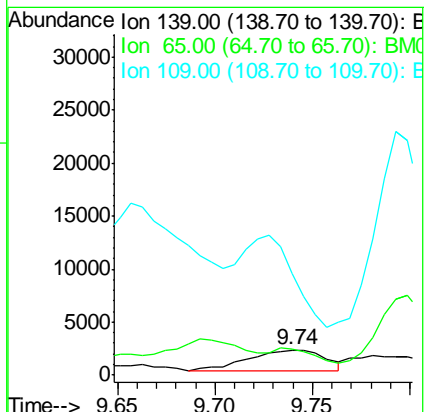
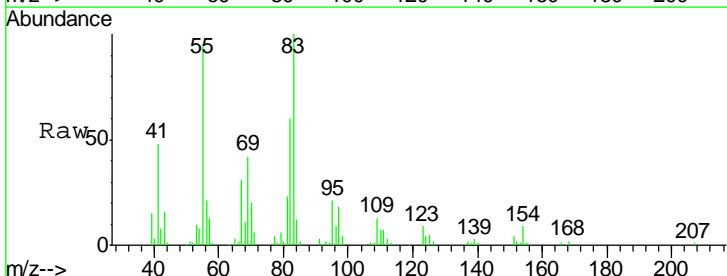
Instrument :
 BNA_M
ClientSampled :
 JHGJ8

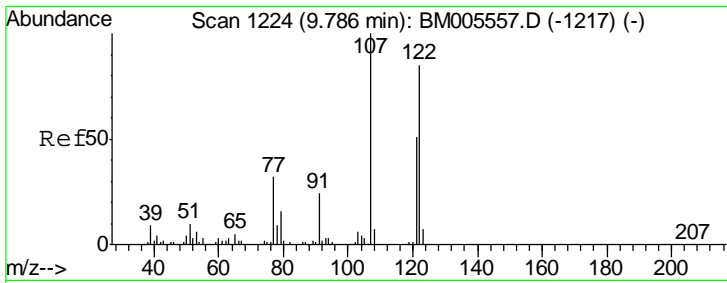
Tgt Ion	Resp	Lower	Upper
82	100		
95	192.0	6.4	9.6#
138	10.2	13.8	20.6#



#23
 2-Nitrophenol
 Concen: 1.70 ng/ul
 RT: 9.74 min Scan# 1216
 Delta R.T. 0.01 min
 Lab File: BM005560.D
 Acq: 21 May 2016 20:58

Tgt Ion	Resp	Lower	Upper
139	100		
65	103.5	45.2	67.8#
109	400.9	30.8	46.2#

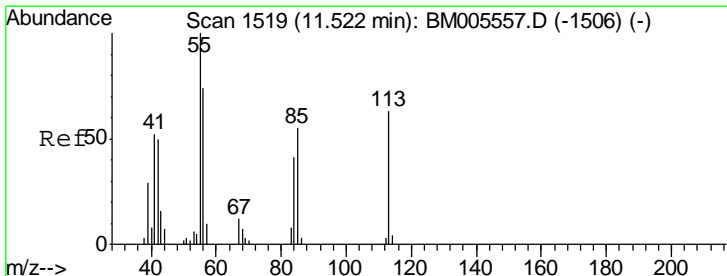
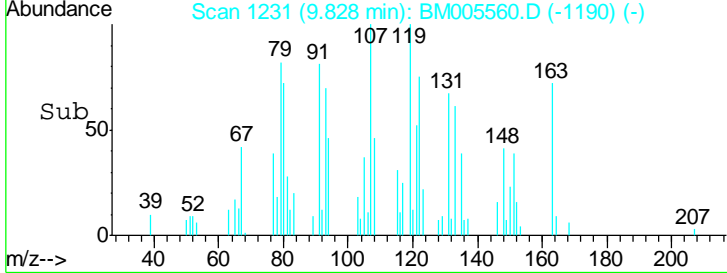
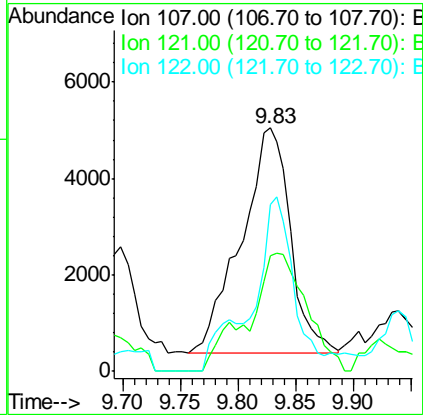
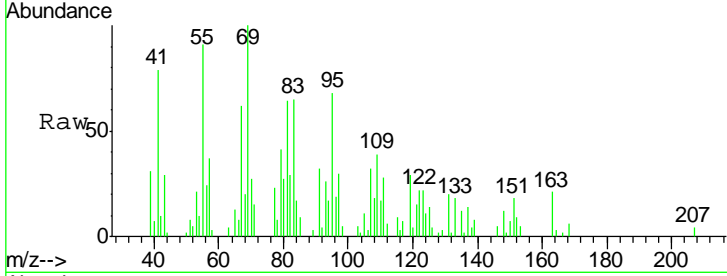




#24
 2,4-Dimethylphenol
 Concen: 2.16 ng/ul
 RT: 9.83 min Scan# 1231
 Delta R.T. 0.04 min
 Lab File: BM005560.D
 Acq: 21 May 2016 20:58

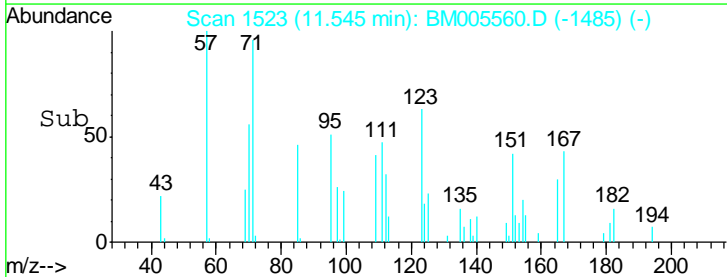
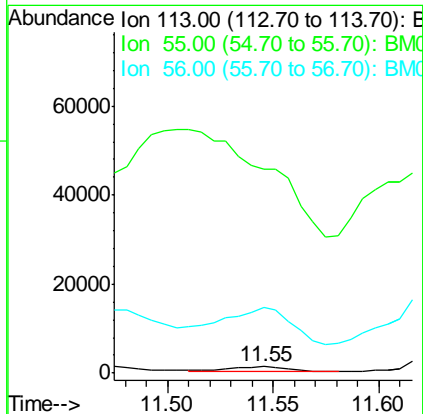
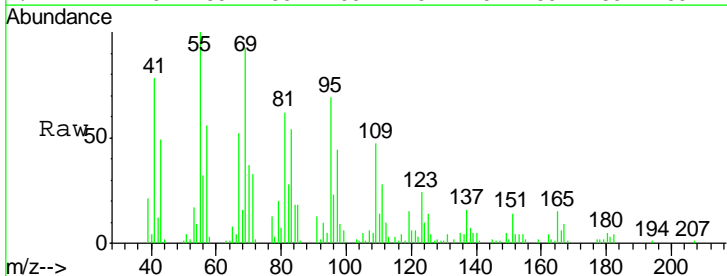
Instrument :
 BNA_M
 ClientSampled :
 JHGJ8

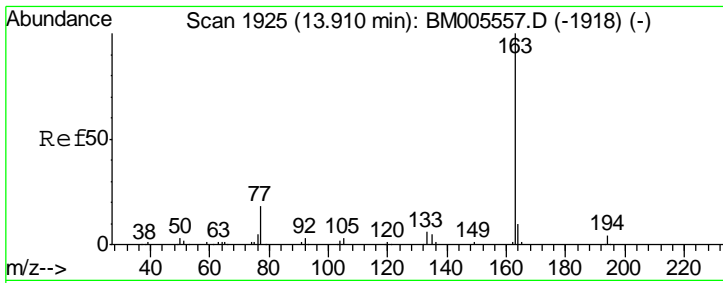
Tgt Ion	Resp	Lower	Upper
107	13793		
121	47.7	37.5	56.3
122	68.5	66.9	100.3



#32
 Caprolactam
 Concen: 1.15 ng/ul
 RT: 11.55 min Scan# 1523
 Delta R.T. 0.02 min
 Lab File: BM005560.D
 Acq: 21 May 2016 20:58

Tgt Ion	Resp	Lower	Upper
113	2044		
55	3157.0	124.6	187.0#
56	1009.0	95.2	142.8#

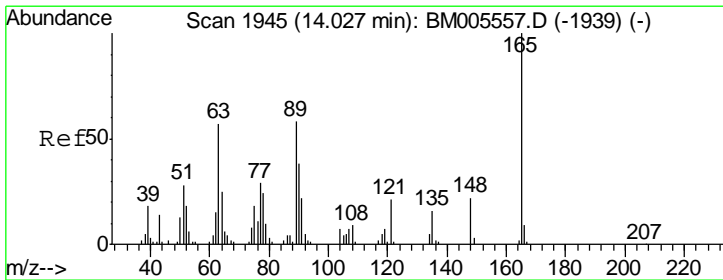
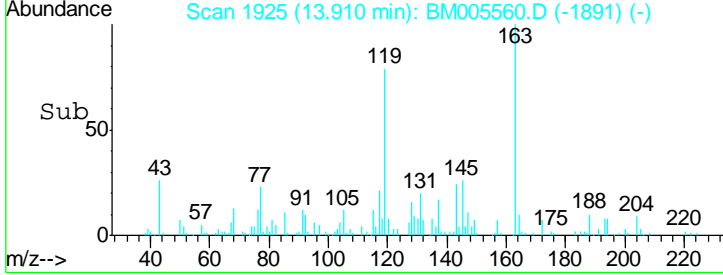
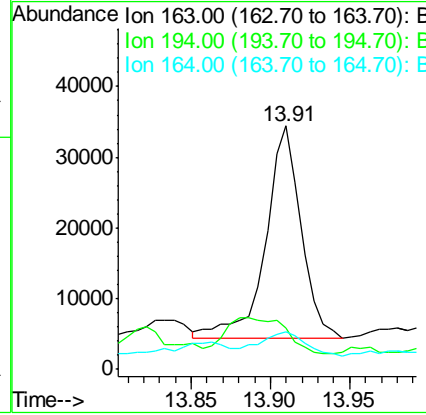
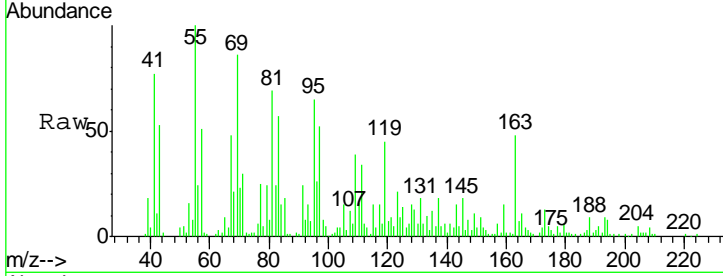




#44
 Dimethylphthalate
 Concen: 3.15 ng/ul
 RT: 13.91 min Scan# 1925
 Delta R.T. 0.00 min
 Lab File: BM005560.D
 Acq: 21 May 2016 20:58

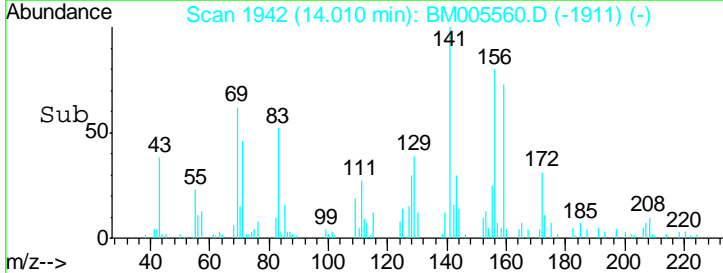
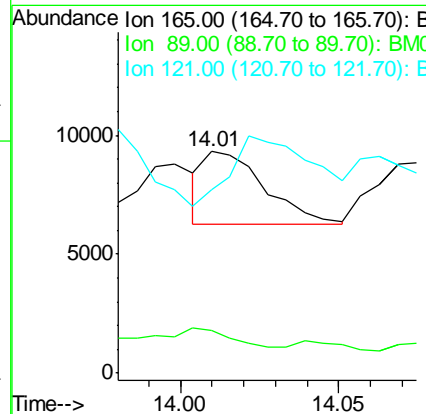
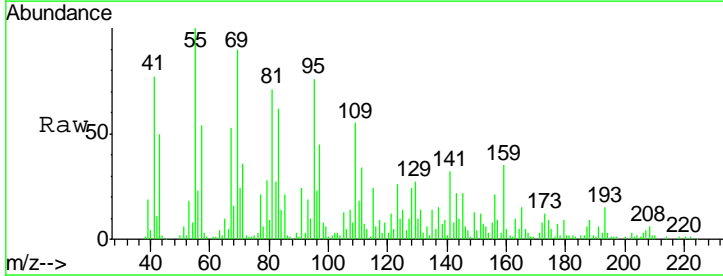
Instrument :
 BNA_M
 ClientSampled :
 JHGJ8

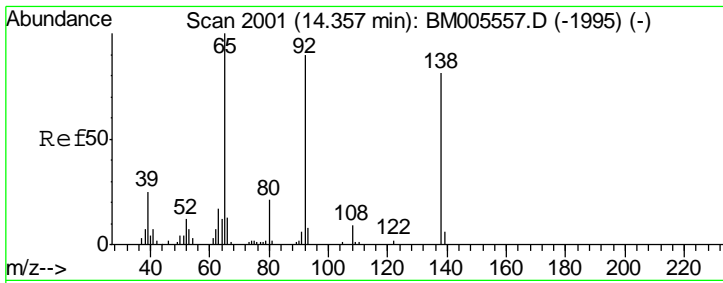
Tgt Ion	Resp	Lower	Upper
163	47131		
194	17.3	3.4	5.0#
164	15.3	8.0	12.0#



#45
 2,6-Dinitrotoluene
 Concen: 1.33 ng/ul
 RT: 14.01 min Scan# 1942
 Delta R.T. -0.02 min
 Lab File: BM005560.D
 Acq: 21 May 2016 20:58

Tgt Ion	Resp	Lower	Upper
165	4016		
89	19.3	48.2	72.2#
121	83.1	17.4	26.0#



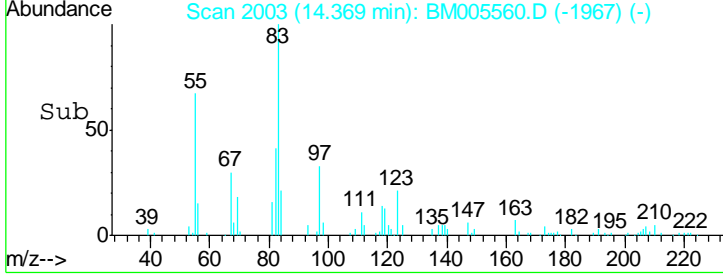
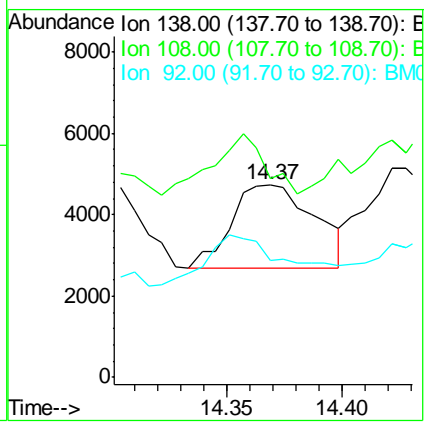
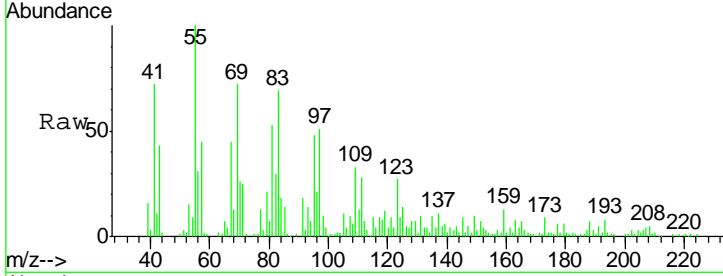


#48
 3-Nitroaniline
 Concen: 1.86 ng/ul
 RT: 14.37 min Scan# 2003
 Delta R.T. 0.01 min
 Lab File: BM005560.D
 Acq: 21 May 2016 20:58

Instrument :
 BNA_M
 ClientSampled :
 JHGJ8

Tgt Ion:138 Resp: 5203

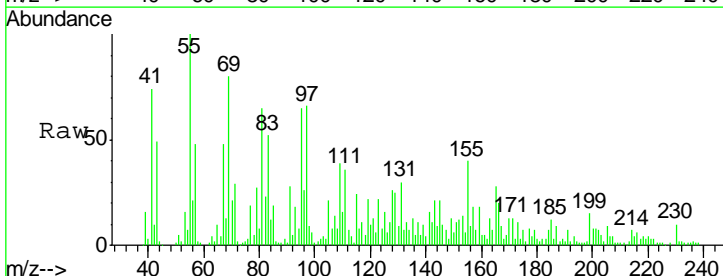
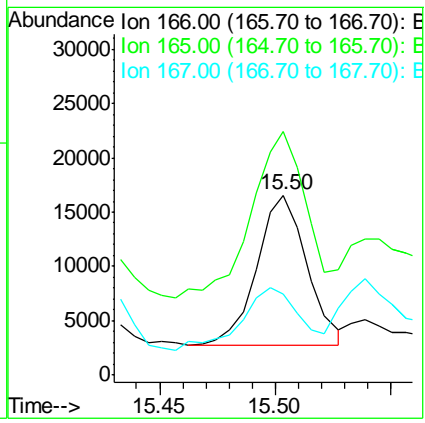
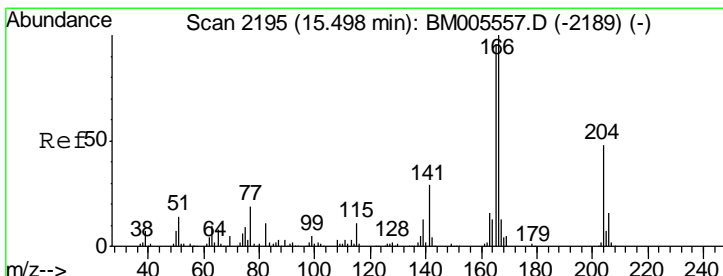
Ion	Ratio	Lower	Upper
138	100		
108	103.1	9.1	13.7#
92	60.9	92.8	139.2#

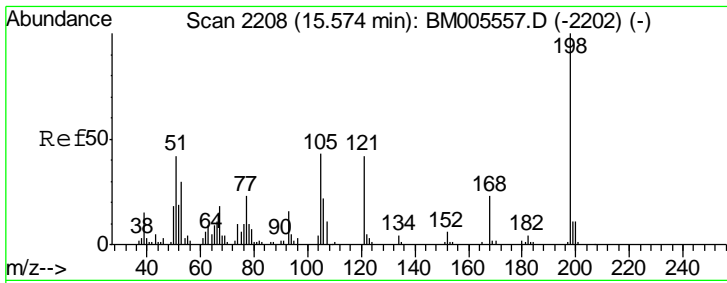


#58
 Fluorene
 Concen: 1.44 ng/ul
 RT: 15.50 min Scan# 2196
 Delta R.T. 0.01 min
 Lab File: BM005560.D
 Acq: 21 May 2016 20:58

Tgt Ion:166 Resp: 20922

Ion	Ratio	Lower	Upper
166	100		
165	135.2	78.0	117.0#
167	45.1	10.5	15.7#

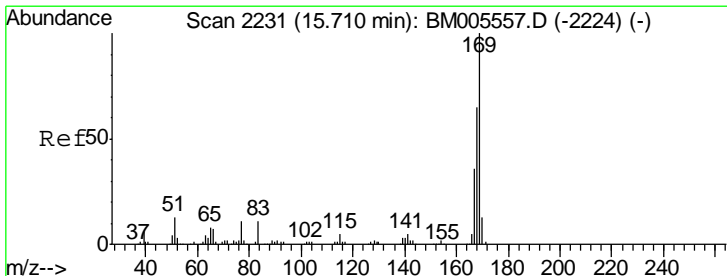
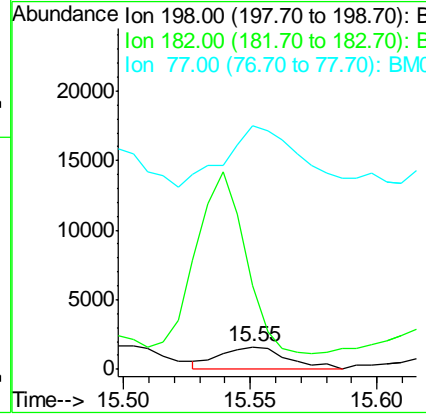
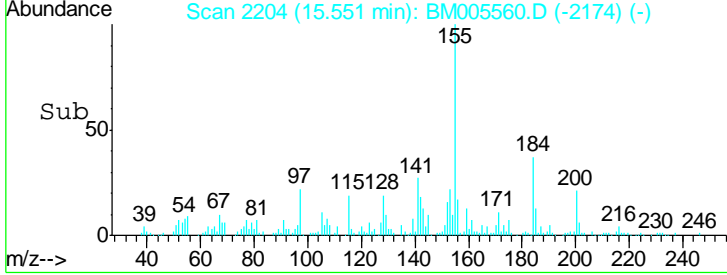
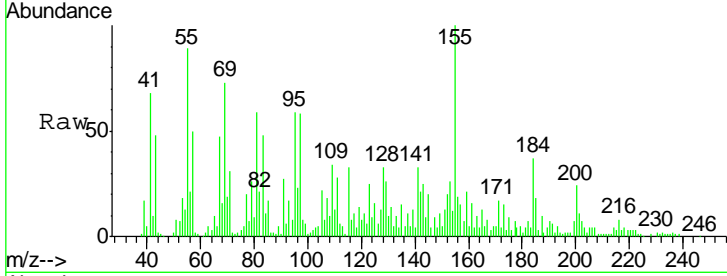




#63
 4,6-Dinitro-2-methylphenol
 Concen: 1.24 ng/ul
 RT: 15.55 min Scan# 2204
 Delta R.T. -0.02 min
 Lab File: BM005560.D
 Acq: 21 May 2016 20:58

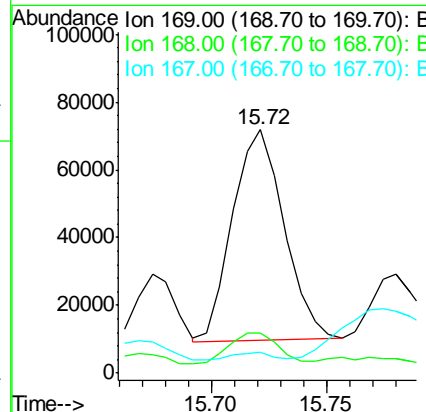
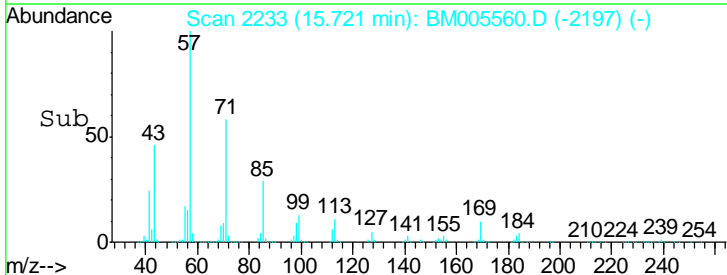
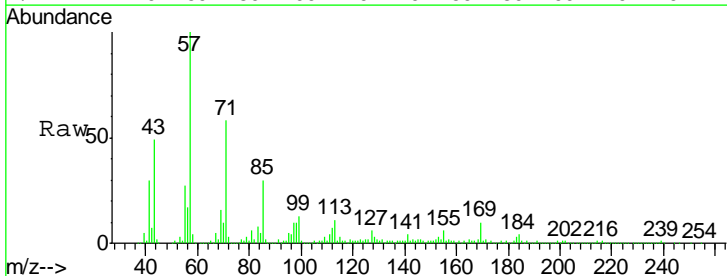
Instrument :
 BNA_M
 ClientSampled :
 JHGJ8

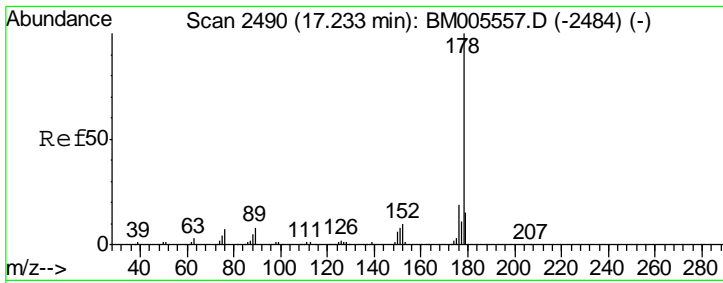
Tgt Ion	Resp	Lower	Upper
198	100		
182	371.5	2.5	3.7#
77	1087.4	21.8	32.8#



#64
 N-Nitrosodiphenylamine
 Concen: 8.04 ng/ul
 RT: 15.72 min Scan# 2233
 Delta R.T. 0.01 min
 Lab File: BM005560.D
 Acq: 21 May 2016 20:58

Tgt Ion	Resp	Lower	Upper
169	100		
168	16.5	53.2	79.8#
167	8.3	28.9	43.3#

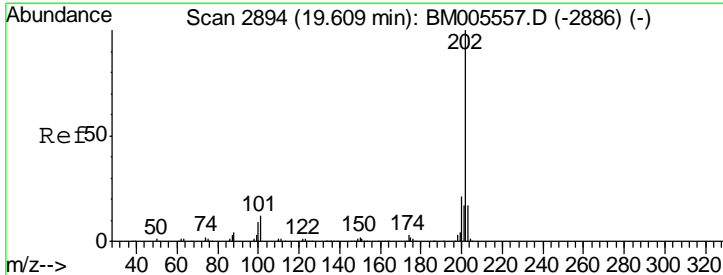
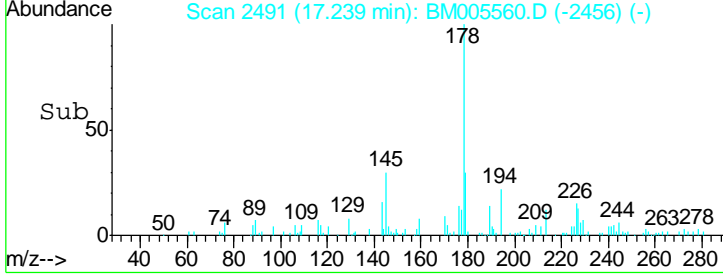
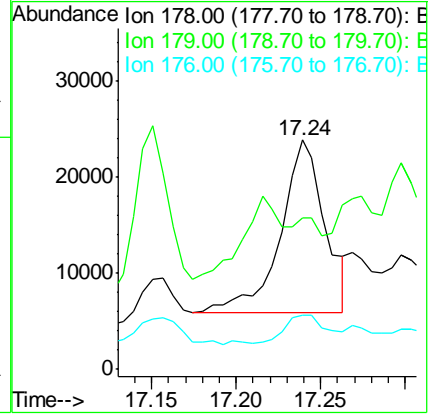
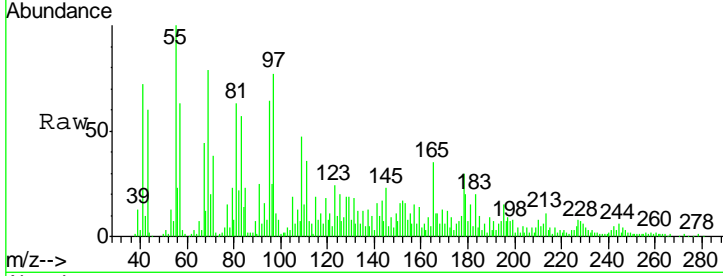




#69
 Phenanthrene
 Concen: 1.48 ng/ul
 RT: 17.24 min Scan# 2491
 Delta R.T. 0.01 min
 Lab File: BM005560.D
 Acq: 21 May 2016 20:58

Instrument :
 BNA_M
 ClientSampleID :
 JHGJ8

Tgt Ion	Resp	Lower	Upper
178	100		
179	65.9	12.2	18.2#
176	23.7	15.8	23.6#



#77
 Pyrene
 Concen: 1.18 ng/ul
 RT: 19.62 min Scan# 2895
 Delta R.T. 0.01 min
 Lab File: BM005560.D
 Acq: 21 May 2016 20:58

Tgt Ion	Resp	Lower	Upper
202	100		
101	20.6	9.6	14.4#
100	9.5	7.8	11.6

