

Data Path : Z:\HPCHEM1\BNA M\DATA\BM052217\
 Data File : BM010124.D
 Acq On : 23 May 2017 04:11
 Operator : SJ/MA
 Sample : I3222-11
 Misc :
 ALS Vial : 30 Sample Multiplier: 1

Instrument :
 BNA_M
 ClientSampleId :

Quant Time: May 23 05:34:10 2017
 Quant Method : Z:\HPCHEM1\BNA M\METHODS\8270-BM051917.M
 Quant Title : ASP BNA STANDARDS FOR 5 POINT CALIBRATION
 QLast Update : Sat May 20 04:25:49 2017
 Response via : Initial Calibration

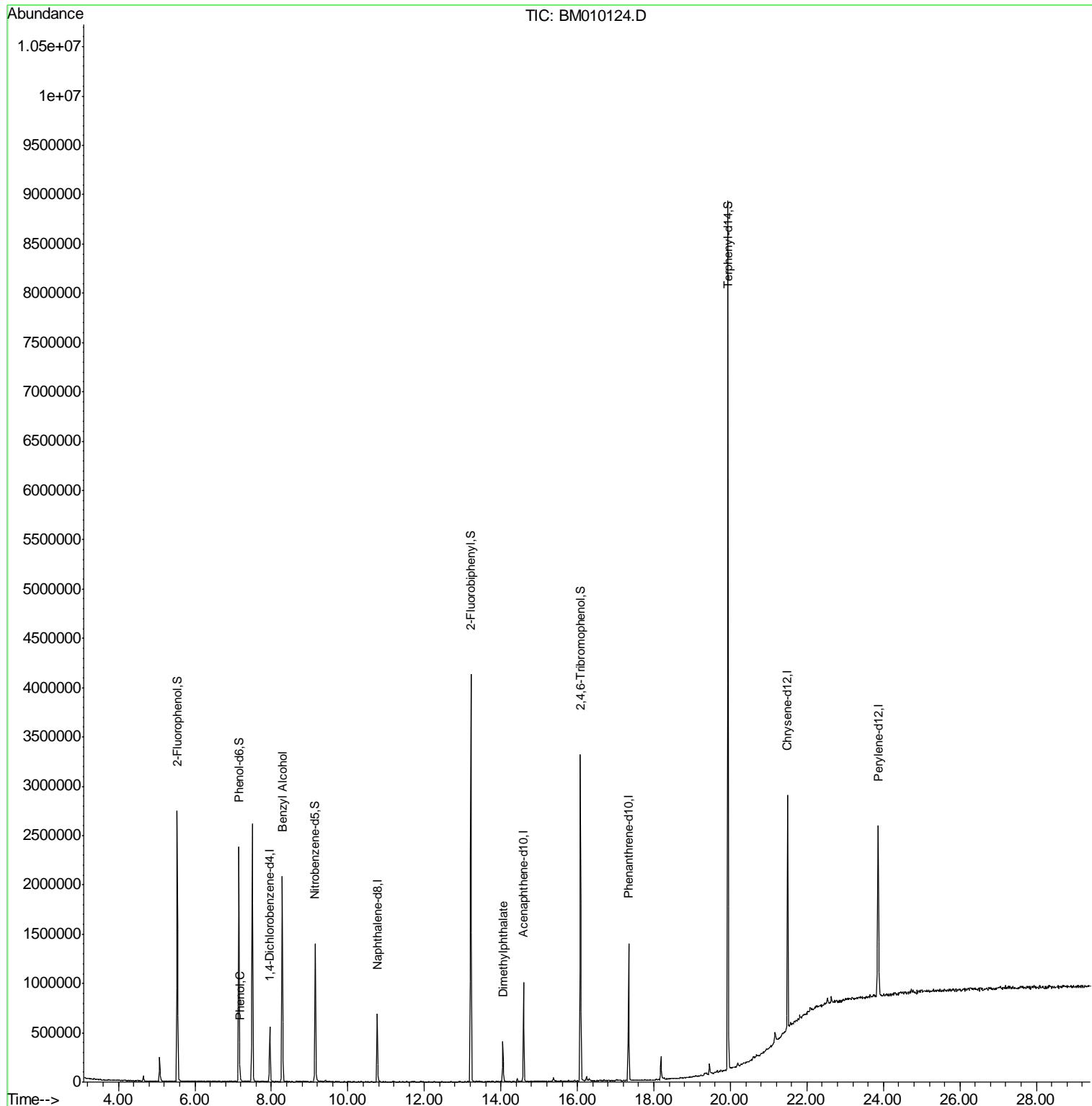
Internal Standards	R.T.	QIon	Response	Conc	Units	Dev(Min)
1) 1,4-Dichlorobenzene-d4	7.96	152	148908	20.00	ng	-0.01
21) Naphthalene-d8	10.77	136	496301	20.00	ng	-0.02
38) Acenaphthene-d10	14.59	164	315562	20.00	ng	-0.02
63) Phenanthrene-d10	17.33	188	802741	20.00	ng	-0.02
75) Chrysene-d12	21.49	240	1226985	20.00	ng	-0.02
86) Perylene-d12	23.86	264	1405208	20.00	ng	-0.02
System Monitoring Compounds						
5) 2-Fluorophenol	5.54	112	1001724	121.48	ng	-0.02
7) Phenol-d6	7.15	99	1238743	116.75	ng	-0.02
23) Nitrobenzene-d5	9.15	82	791888	86.08	ng	-0.02
41) 2,4,6-Tribromophenol	16.08	330	593749	123.89	ng	-0.02
44) 2-Fluorobiphenyl	13.22	172	2006644	81.75	ng	-0.02
78) Terphenyl-d14	19.94	244	3538183	65.57	ng	-0.01
Target Compounds						
10) Phenol	7.18	94	26091	2.33	ng	99
15) Benzyl Alcohol	8.27	79	18224	2.27	ng	# 59
49) Dimethylphthalate	14.05	163	239660	8.51	ng	# 99

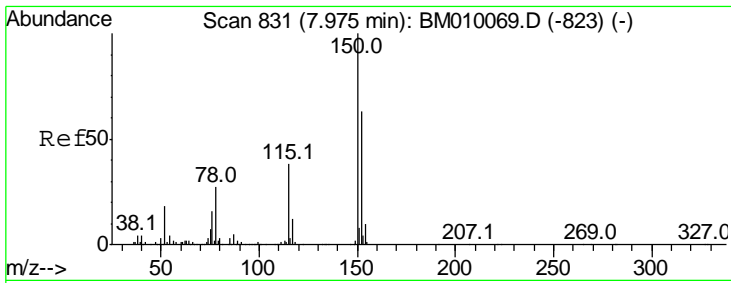
(#) = qualifier out of range (m) = manual integration (+) = signals summed

Data Path : Z:\HPCHEM1\BNA M\DATA\BM052217\
 Data File : BM010124.D
 Acq On : 23 May 2017 04:11
 Operator : SJ/MA
 Sample : I3222-11
 Misc :
 ALS Vial : 30 Sample Multiplier: 1

Instrument :
 BNA_M
 ClientSampleId :

Quant Time: May 23 05:34:10 2017
 Quant Method : Z:\HPCHEM1\BNA M\METHODS\8270-BM051917.M
 Quant Title : ASP BNA STANDARDS FOR 5 POINT CALIBRATION
 QLast Update : Sat May 20 04:25:49 2017
 Response via : Initial Calibration

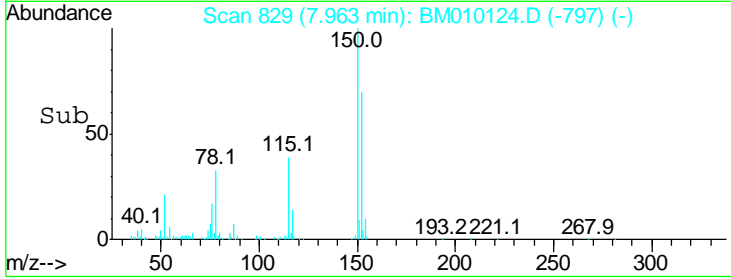
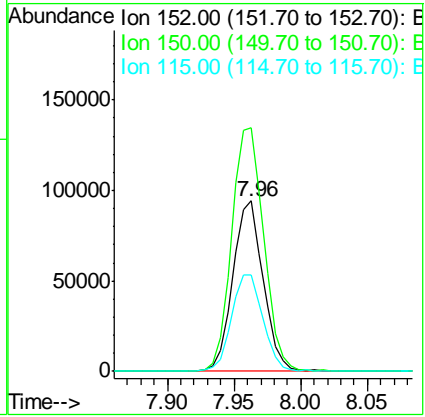
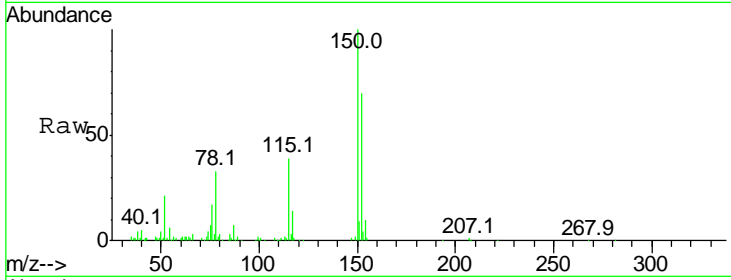




#1
 1,4-Dichlorobenzene-d4
 Concen: 20.00 ng
 RT: 7.96 min Scan# 829
 Delta R.T. -0.01 min
 Lab File: BM010124.D
 Acq: 23 May 2017 04:11

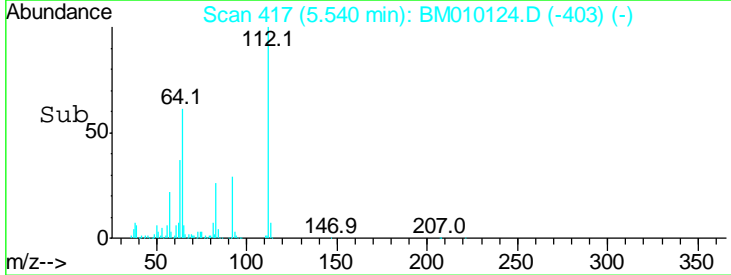
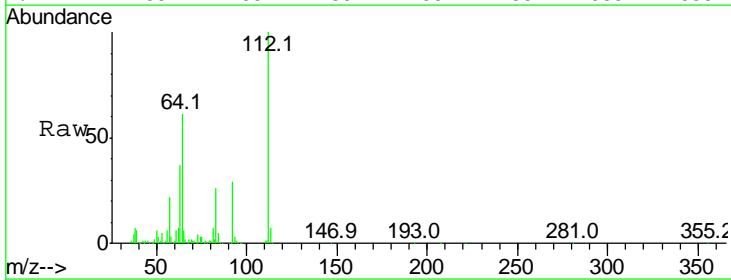
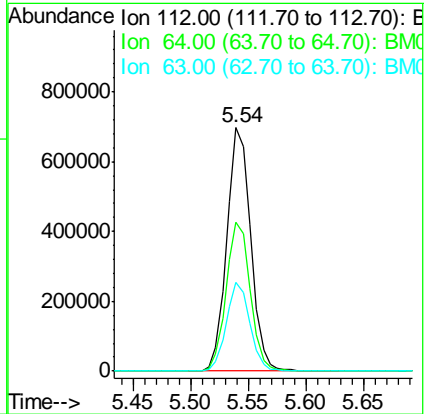
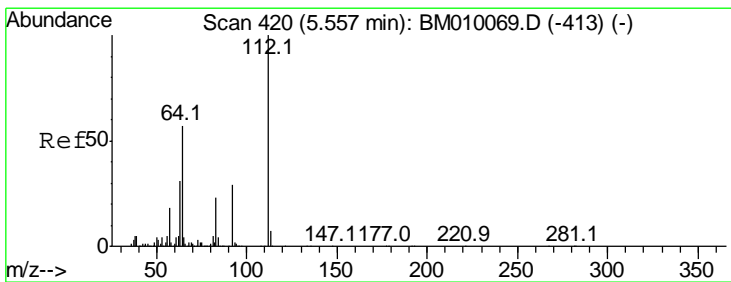
Instrument :
 BNA_M
 ClientSampled :

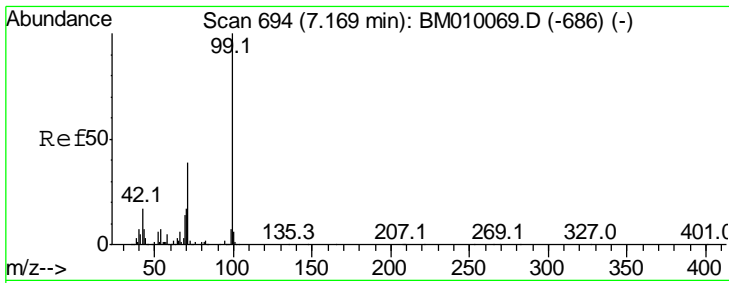
Tgt Ion	Resp	Lower	Upper
152	100		
150	143.1	119.5	179.3
115	56.4	43.0	64.4



#5
 2-Fluorophenol
 Concen: 121.48 ng
 RT: 5.54 min Scan# 417
 Delta R.T. -0.02 min
 Lab File: BM010124.D
 Acq: 23 May 2017 04:11

Tgt Ion	Resp	Lower	Upper
112	100		
64	60.9	38.6	57.8#
63	36.6	19.3	28.9#



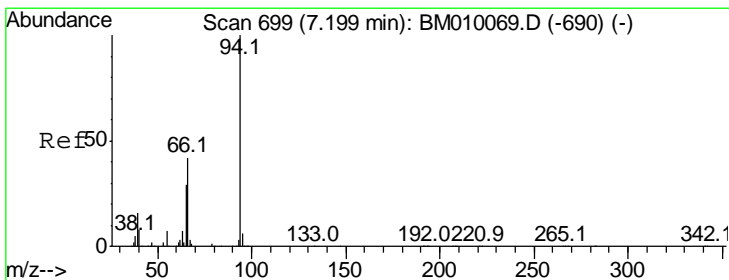
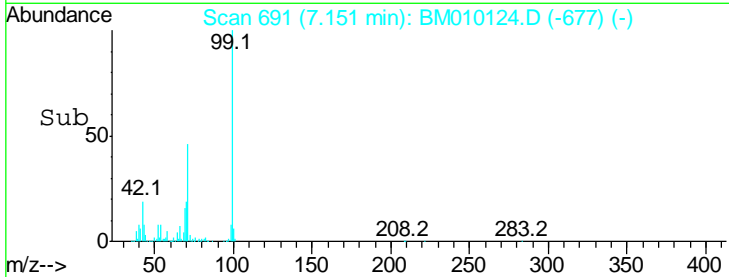
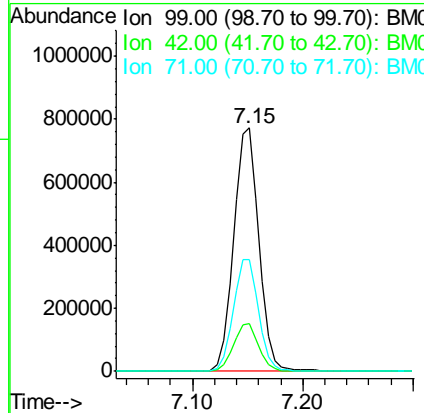
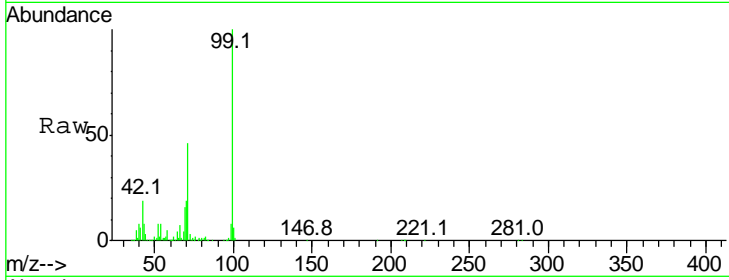


#7
 Phenol-d6
 Concen: 116.75 ng
 RT: 7.15 min Scan# 691
 Delta R.T. -0.02 min
 Lab File: BM010124.D
 Acq: 23 May 2017 04:11

Instrument :
 BNA_M
 ClientSampled :

Tgt Ion: 99 Resp: 1238743

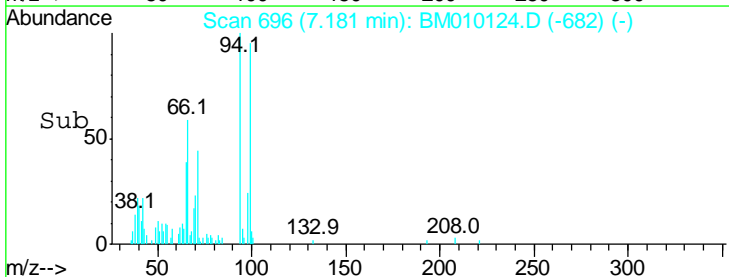
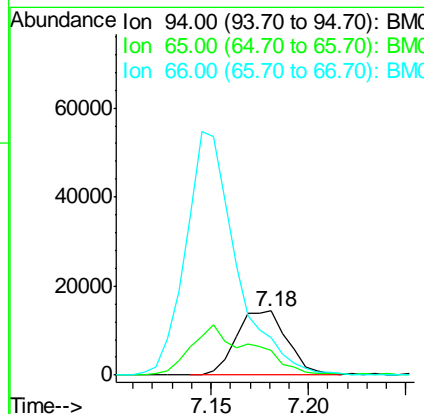
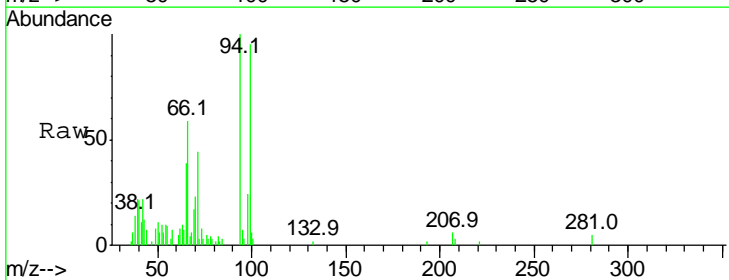
Ion	Ratio	Lower	Upper
99	100		
42	19.4	11.0	16.4#
71	45.8	23.4	35.2#

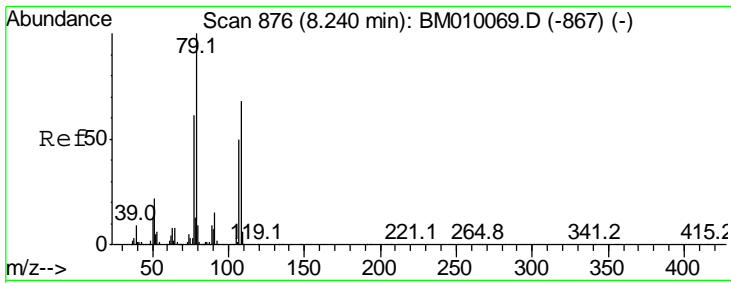


#10
 Phenol
 Concen: 2.33 ng
 RT: 7.18 min Scan# 696
 Delta R.T. -0.02 min
 Lab File: BM010124.D
 Acq: 23 May 2017 04:11

Tgt Ion: 94 Resp: 26091

Ion	Ratio	Lower	Upper
94	100		
65	39.4	18.8	58.8
66	59.2	39.9	79.9

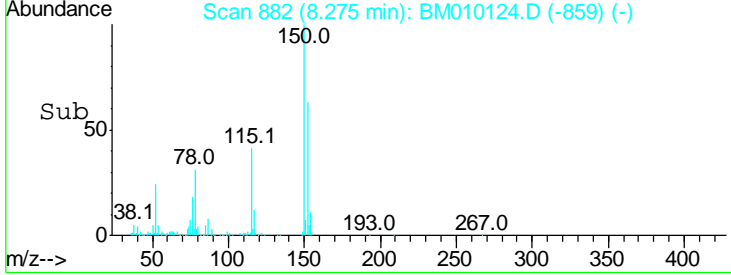
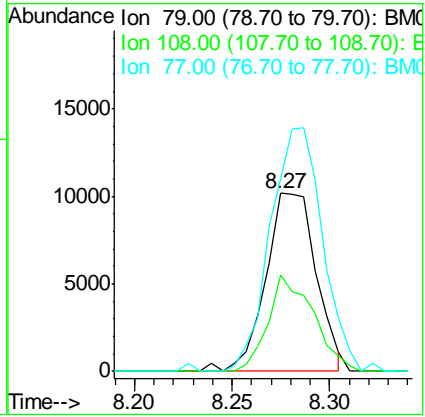
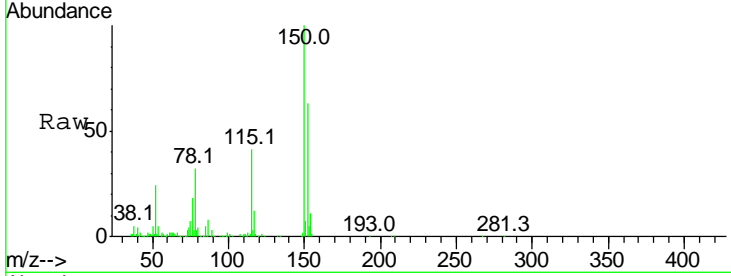




#15
 Benzyl Alcohol
 Concen: 2.27 ng
 RT: 8.27 min Scan# 882
 Delta R.T. 0.04 min
 Lab File: BM010124.D
 Acq: 23 May 2017 04:11

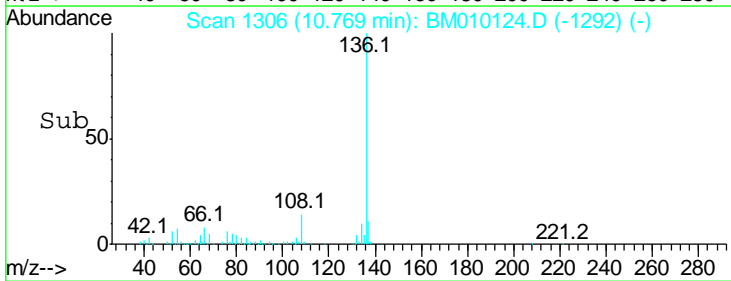
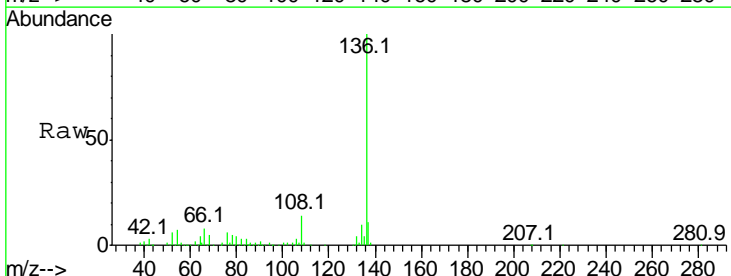
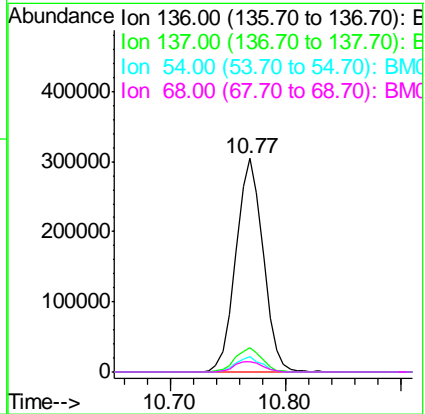
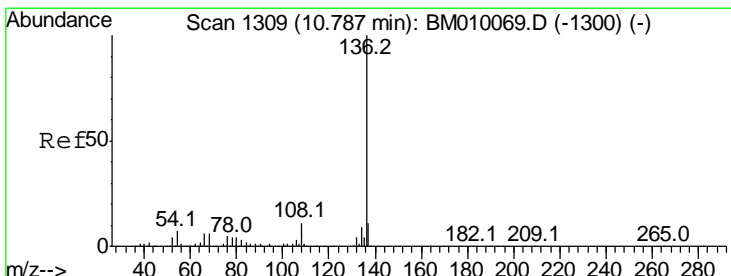
Instrument :
 BNA_M
 ClientSampled :

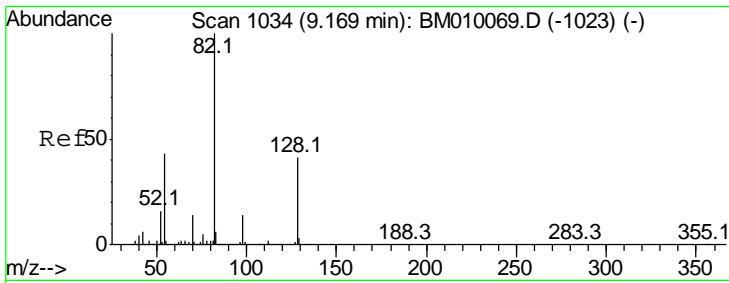
Tgt Ion	Resp	Lower	Upper
79	18224		
108	53.9	65.0	97.4#
77	108.5	53.0	79.6#



#21
 Naphthalene-d8
 Concen: 20.00 ng
 RT: 10.77 min Scan# 1306
 Delta R.T. -0.02 min
 Lab File: BM010124.D
 Acq: 23 May 2017 04:11

Tgt Ion	Resp	Lower	Upper
136	496301		
137	11.1	8.7	13.1
54	7.0	4.6	6.8#
68	4.9	3.7	5.5

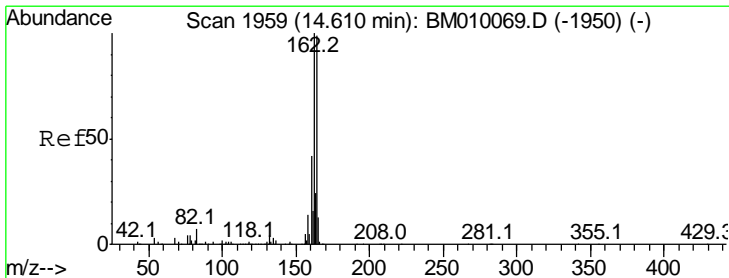
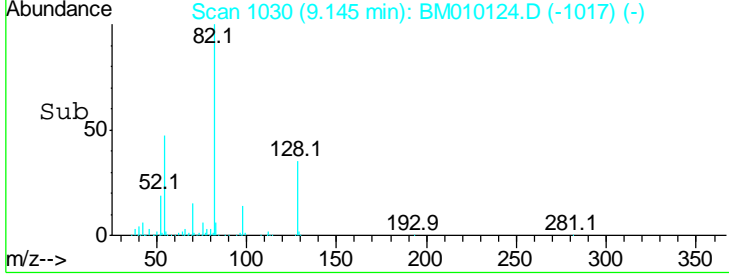
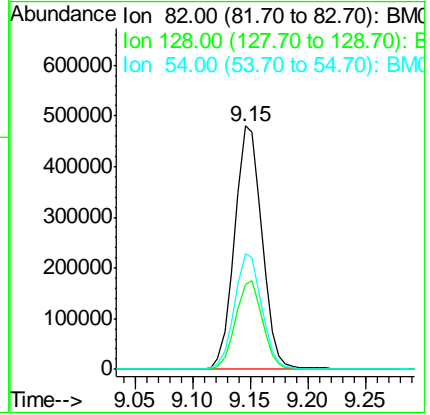
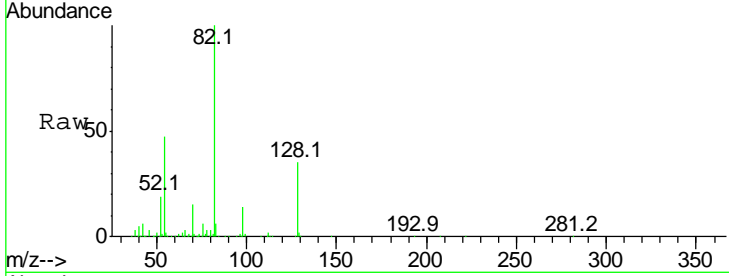




#23
 Nitrobenzene-d5
 Concen: 86.08 ng
 RT: 9.15 min Scan# 1030
 Delta R.T. -0.02 min
 Lab File: BM010124.D
 Acq: 23 May 2017 04:11

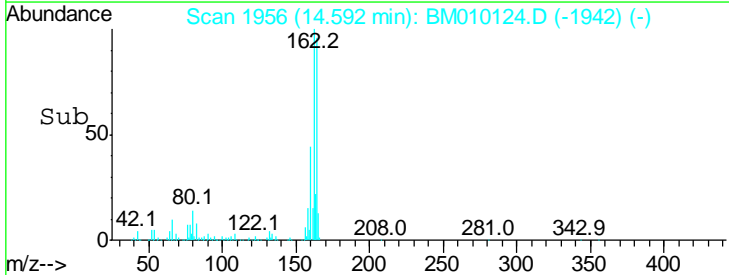
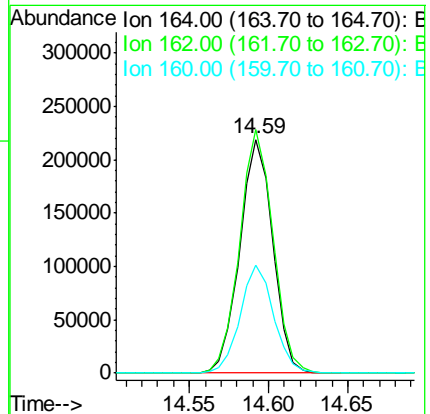
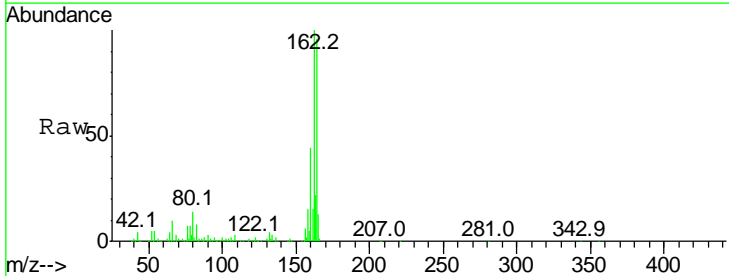
Instrument :
 BNA_M
 ClientSampled :

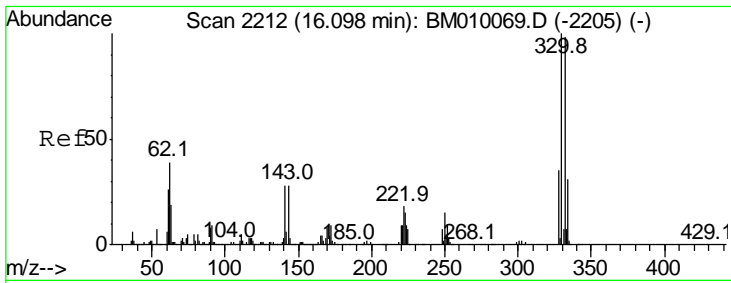
Tgt Ion	Resp	Lower	Upper
82	791888		
128	35.1	32.8	49.2
54	47.3	40.6	60.8



#38
 Acenaphthene-d10
 Concen: 20.00 ng
 RT: 14.59 min Scan# 1956
 Delta R.T. -0.02 min
 Lab File: BM010124.D
 Acq: 23 May 2017 04:11

Tgt Ion	Resp	Lower	Upper
164	315562		
162	104.1	82.4	123.6
160	46.1	35.8	53.6

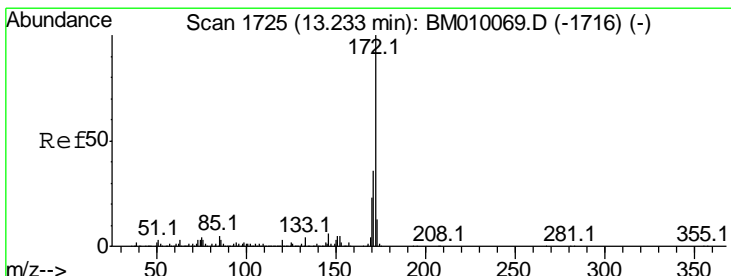
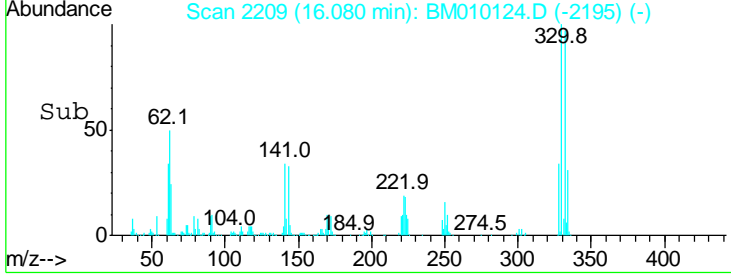
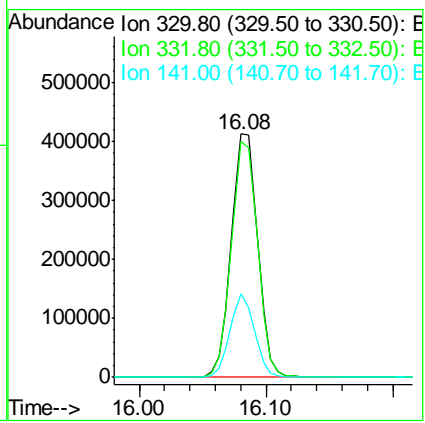
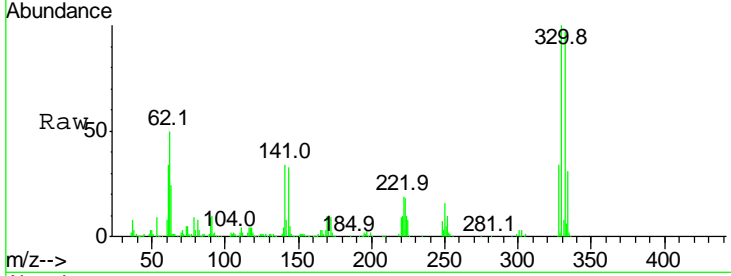




#41
 2,4,6-Tribromophenol
 Concen: 123.89 ng
 RT: 16.08 min Scan# 2209
 Delta R.T. -0.02 min
 Lab File: BM010124.D
 Acq: 23 May 2017 04:11

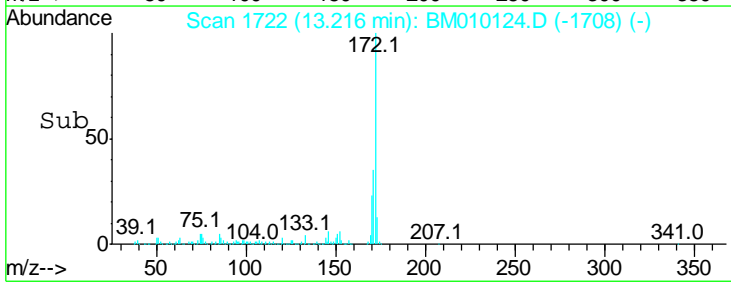
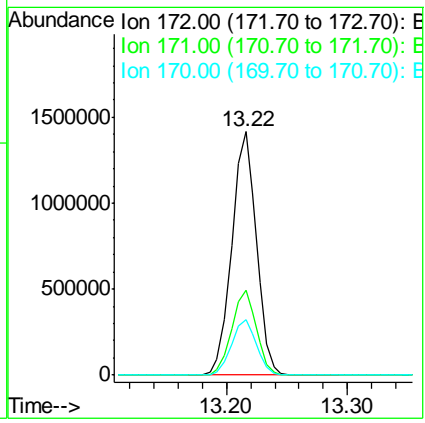
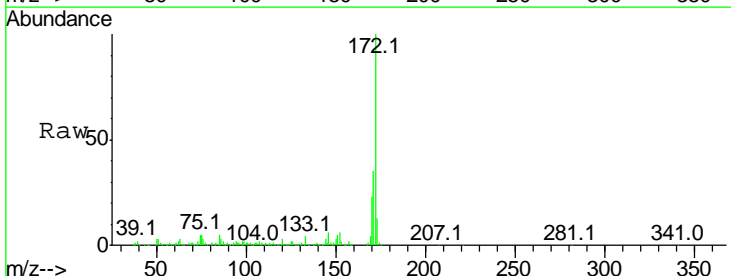
Instrument :
 BNA_M
 ClientSampled :

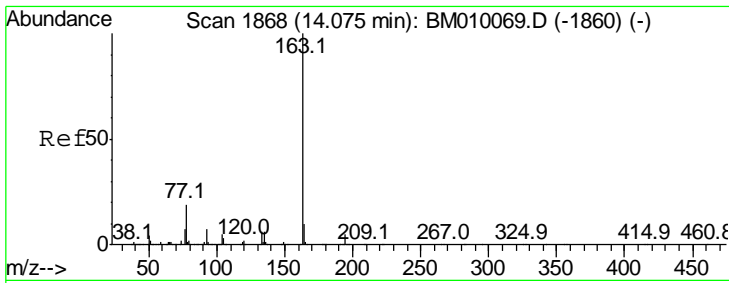
Tgt Ion	Resp	Lower	Upper
330	100		
332	96.8	0.0	0.0#
141	31.8	0.0	0.0#



#44
 2-Fluorobiphenyl
 Concen: 81.75 ng
 RT: 13.22 min Scan# 1722
 Delta R.T. -0.02 min
 Lab File: BM010124.D
 Acq: 23 May 2017 04:11

Tgt Ion	Resp	Lower	Upper
172	100		
171	35.0	28.5	42.7
170	23.0	18.8	28.2

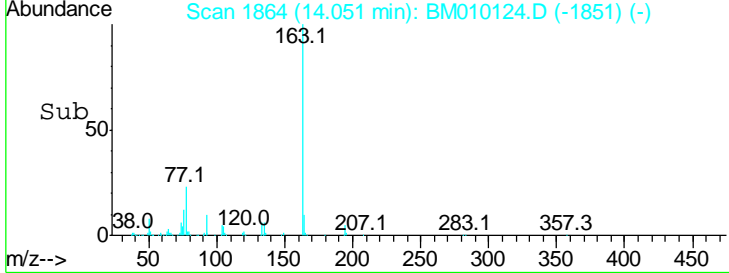
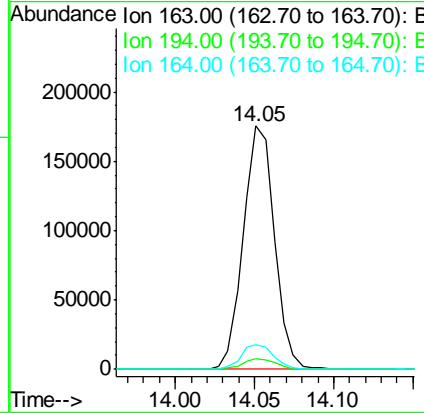
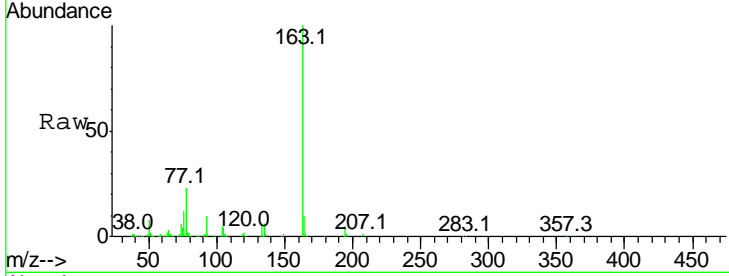




#49
 Dimethylphthalate
 Concen: 8.51 ng
 RT: 14.05 min Scan# 1864
 Delta R.T. -0.02 min
 Lab File: BM010124.D
 Acq: 23 May 2017 04:11

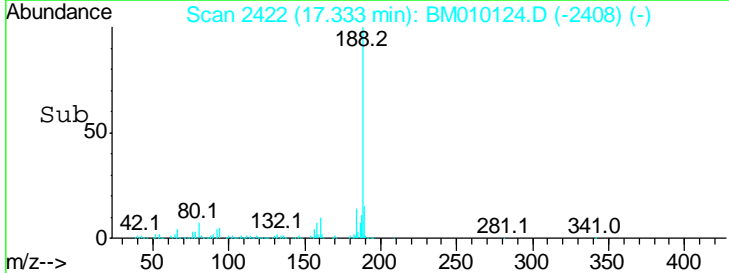
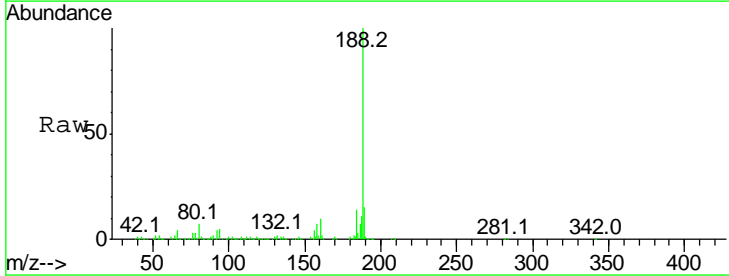
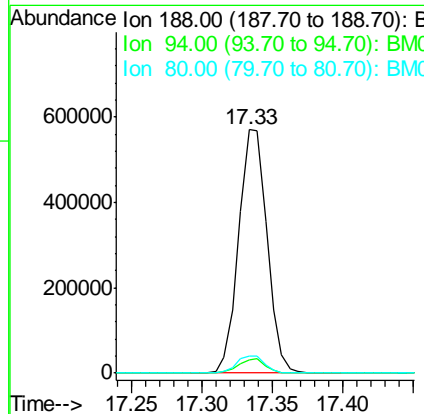
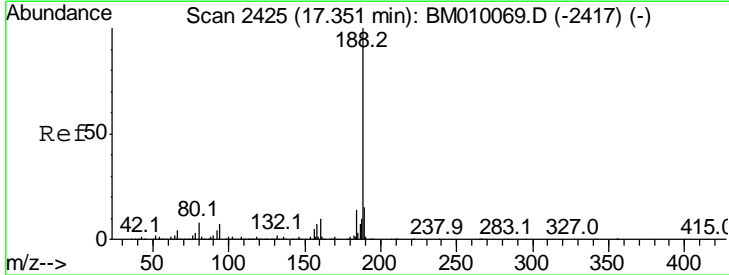
Instrument :
 BNA_M
 ClientSampled :

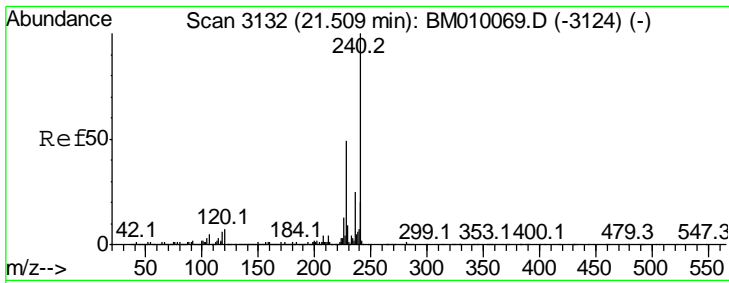
Tgt Ion	Resp	Lower	Upper
163	100		
194	4.6	2.7	4.1#
164	10.3	8.2	12.2



#63
 Phenanthrene-d10
 Concen: 20.00 ng
 RT: 17.33 min Scan# 2422
 Delta R.T. -0.02 min
 Lab File: BM010124.D
 Acq: 23 May 2017 04:11

Tgt Ion	Resp	Lower	Upper
188	100		
94	5.4	8.7	13.1#
80	7.2	9.3	13.9#

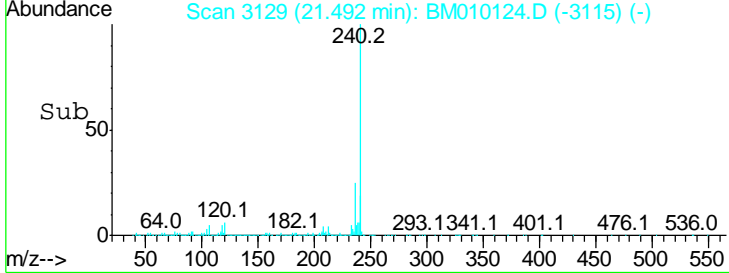
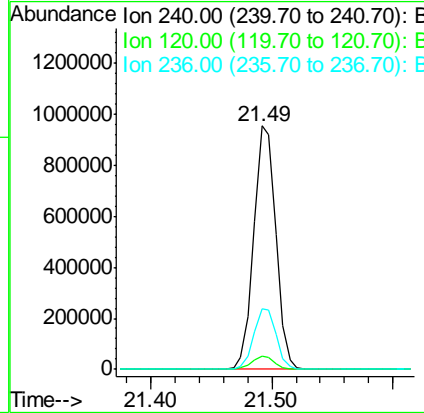
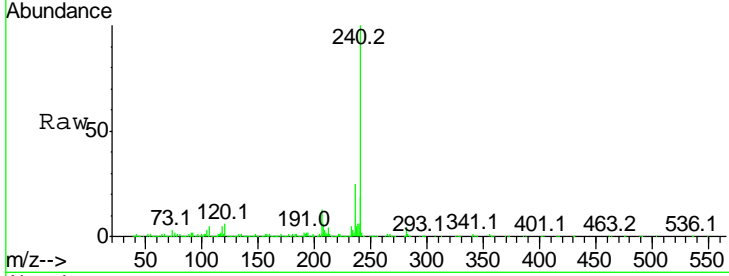




#75
 Chrysene-d12
 Concen: 20.00 ng
 RT: 21.49 min Scan# 3129
 Delta R.T. -0.02 min
 Lab File: BM010124.D
 Acq: 23 May 2017 04:11

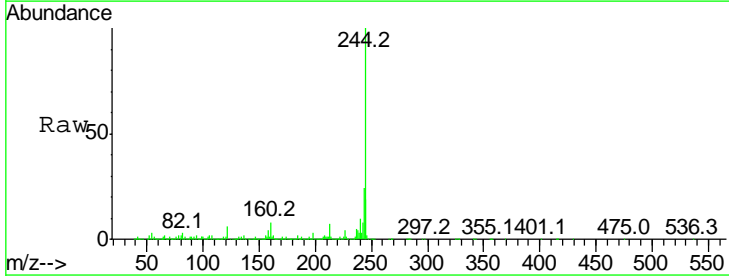
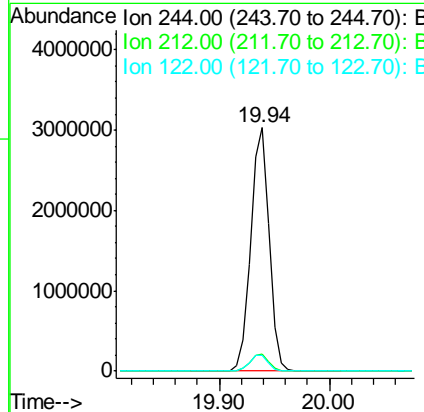
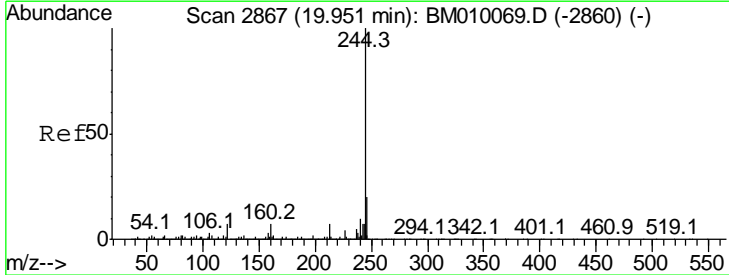
Instrument :
 BNA_M
 ClientSampled :

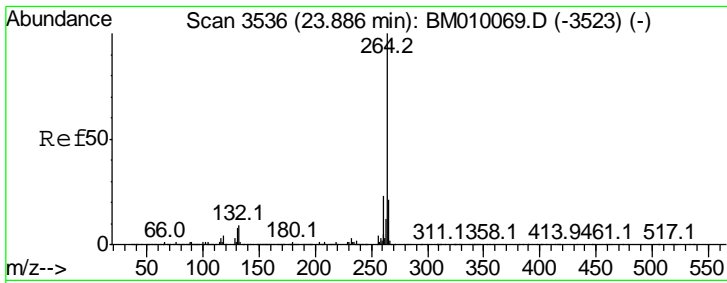
Tgt Ion	Resp	Lower	Upper
240	100		
120	5.7	8.2	12.2#
236	24.8	20.0	30.0



#78
 Terphenyl-d14
 Concen: 65.57 ng
 RT: 19.94 min Scan# 2865
 Delta R.T. -0.01 min
 Lab File: BM010124.D
 Acq: 23 May 2017 04:11

Tgt Ion	Resp	Lower	Upper
244	100		
212	7.2	4.9	7.3
122	6.4	6.2	9.4





#86
 Perylene-d12
 Concen: 20.00 ng
 RT: 23.86 min Scan# 3532
 Delta R.T. -0.02 min
 Lab File: BM010124.D
 Acq: 23 May 2017 04:11

Instrument :
 BNA_M
 ClientSampleId :

Tot Ion: 264 Resp: 1405208

Ion	Ratio	Lower	Upper
264	100		
260	23.4	18.6	27.8
265	21.6	17.3	25.9

