

Data Path : Z:\SVOASRV\HPCHEM1\BNA M\DATA\BM052220\  
 Data File : BM026101.D  
 Acq On : 23 May 2020 04:53  
 Operator : MA/SJ  
 Sample : L2737-13  
 Misc :  
 ALS Vial : 26 Sample Multiplier: 1

**Instrument :**  
 BNA\_M  
**Client Sampled :**  
 F9B10

**Manual Integrations**  
**APPROVED**  
 mohammad  
 5/26/2020 10:11:58 AM

Quant Time: May 25 02:16:39 2020  
 Quant Method : Z:\SVOASRV\HPCHEM1\BNA\_M\METHODS\SOM-EPA-BM051320MA.M  
 Quant Title : SVOA CALIBRATION  
 QLast Update : Fri May 22 13:18:41 2020  
 Response via : Initial Calibration

Internal Standards	R.T.	QIon	Response	Conc	Units	Dev(Min)
1) 1,4-Dichlorobenzene-d4	7.49	152	221714	20.00	ng/ul	0.00
18) Naphthalene-d8	10.29	136	845927	20.00	ng/ul	0.04
36) Acenaphthene-d10	14.14	164	528661	20.00	ng/ul	0.00
62) Phenanthrene-d10	16.89	188	1080082	20.00	ng/ul	0.00
78) Chrysene-d12	21.09	240	1074759	20.00	ng/ul	0.00
86) Perylene-d12	23.21	264	1119005	20.00	ng/ul	0.00

System Monitoring Compounds	R.T.	QIon	Response	Conc	Units	Dev(Min)
3) 1,4-Dioxane-d8	3.07	96	29573	4.02	ng/uL	0.00
5) Phenol-d5	6.69	99	132391	6.58	ng/ul	0.00
7) Bis-(2-Chloroethyl)ether-d	6.85	67	342027	24.58	ng/ul	0.00
9) 2-Chlorophenol-d4	7.03	132	334542	21.25	ng/ul	0.00
13) 4-Methylphenol-d8	8.22	113	236264	15.59	ng/ul	0.01
19) Nitrobenzene-d5	8.64	128	208039	30.17	ng/ul	0.00
22) 2-Nitrophenol-d4	9.36	143	228345	33.47	ng/ul	0.00
26) 2,4-Dichlorophenol-d3	9.92	165	388705	28.38	ng/ul	0.04
29) 4-Chloroaniline-d4	0.00	131	0d	0.00	ng/ul	
44) Dimethylphthalate-d6	13.57	166	1231280	29.04	ng/ul	0.01
47) Acenaphthylene-d8	13.82	160	1473690	29.34	ng/ul	0.00
52) 4-Nitrophenol-d4	14.35	143	50186	6.68	ng/ul	-0.01
58) Fluorene-d10	15.14	176	1071462	29.06	ng/ul	0.00
63) 4,6-Dinitro-2-methylphenol	15.28	200	177601	28.20	ng/ul	0.01
71) Anthracene-d10	16.99	188	1638179	30.78	ng/ul	0.01
79) Pyrene-d10	19.29	212	1774519	32.14	ng/ul	0.00
90) Benzo(a)pyrene-d12	23.07	264	1698118	28.51	ng/ul	0.00

Target Compounds	R.T.	QIon	Response	Conc	Units	Ovalue
6) Phenol	6.72	94	1025330	45.476	ng/ul	98
11) 2-Methylphenol	7.96	108	3199976	205.989	ng/ul	99
14) Acetophenone	8.33	105	170192	6.693	ng/ul#	79
16) 4-Methylphenol	8.28	108	3256075	192.731	ng/ul	88
24) 2,4-Dimethylphenol	9.50	107	6362773m	335.877	ng/ul	
28) Naphthalene	10.32	128	57358746m	1108.990	ng/ul	
34) 2-Methylnaphthalene	11.93	142	3852143	110.731	ng/ul	99
41) 1,1'-Biphenyl	12.96	154	750433	15.997	ng/ul	98
45) Dimethylphthalate	13.61	163	159385	3.581	ng/ul	97
48) Acenaphthylene	13.85	152	142323	2.581	ng/ul#	83
50) Acenaphthene	14.22	153	8790087	226.035	ng/ul	98
54) Dibenzofuran	14.55	168	5375599	98.362	ng/ul	100
59) Fluorene	15.20	166	4639345	104.941	ng/ul	99
70) Phenanthrene	16.94	178	10032715	147.464	ng/ul	98
72) Anthracene	17.02	178	976782	14.310	ng/ul	98
75) Carbazole	17.32	167	12383453	219.295	ng/ul	97
77) Fluoranthene	18.96	202	2570534	36.019	ng/ul	99
80) Pyrene	19.32	202	1592945	21.112	ng/ul	98
83) Benzo(a)anthracene	21.07	228	108780	1.468	ng/ul	94

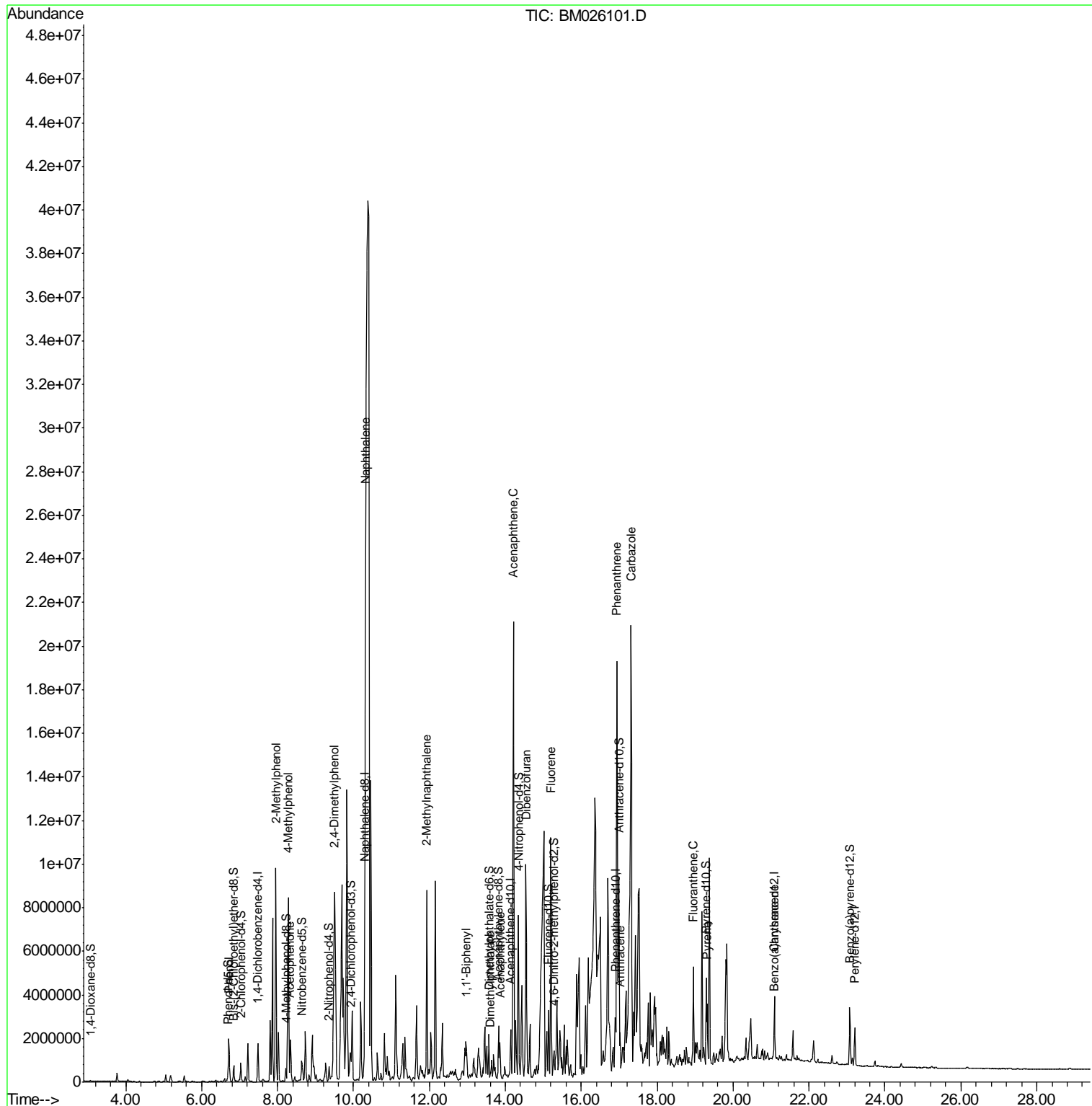
(#) = qualifier out of range (m) = manual integration (+) = signals summed

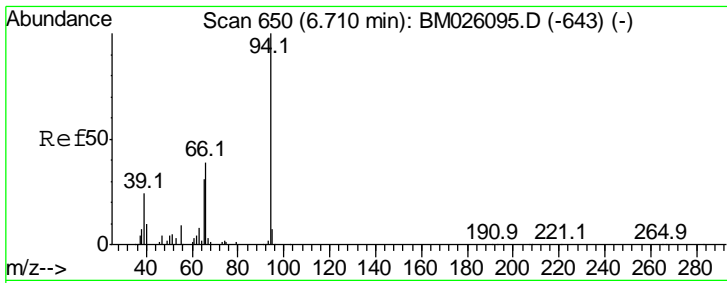
Data Path : Z:\SVOASRV\HPCHEM1\BNA M\DATA\BM052220\  
 Data File : BM026101.D  
 Acq On : 23 May 2020 04:53  
 Operator : MA/SJ  
 Sample : L2737-13  
 Misc :  
 ALS Vial : 26 Sample Multiplier: 1

Instrument :  
 BNA\_M  
 Client Sampled :  
 F9B10

Manual Integrations  
 APPROVED  
 mohammad  
 5/26/2020 10:11:58 AM

Quant Time: May 25 02:16:39 2020  
 Quant Method : Z:\SVOASRV\HPCHEM1\BNA\_M\METHODS\SOM-EPA-BM051320MA.M  
 Quant Title : SVOA CALIBRATION  
 QLast Update : Fri May 22 13:18:41 2020  
 Response via : Initial Calibration





#6  
 Phenol  
 Concen: 45.476 ng/ul  
 RT: 6.72 min Scan# 651  
 Delta R.T. 0.01 min  
 Lab File: BM026101.D  
 Acq: 23 May 2020 04:53

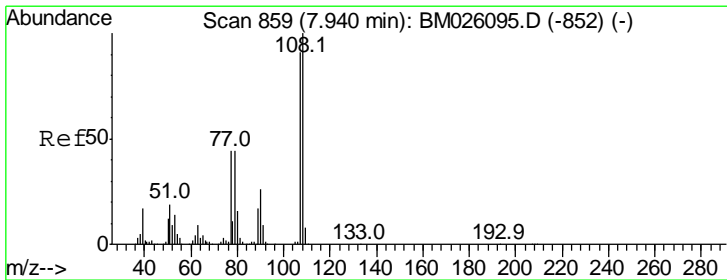
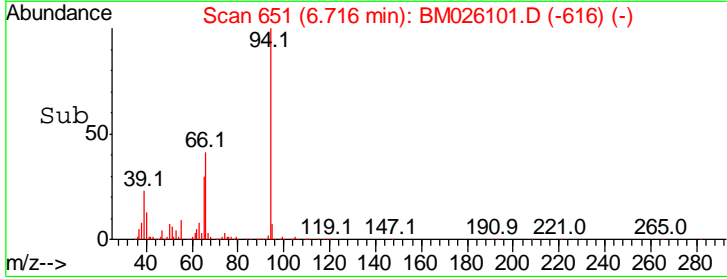
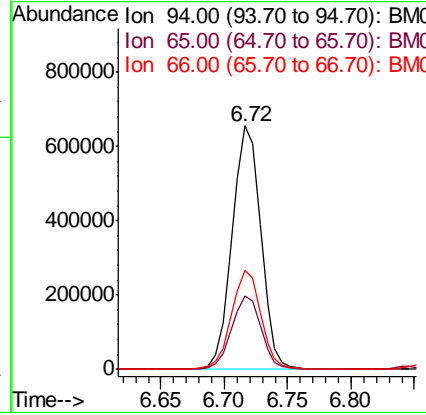
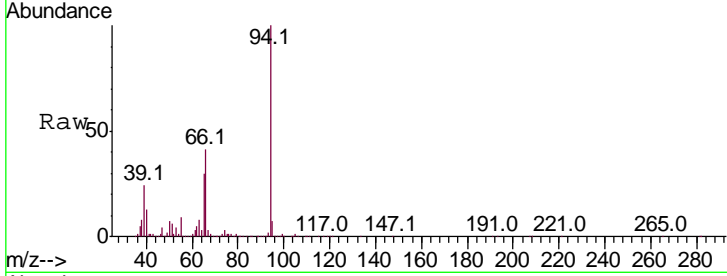
**Instrument :**  
 BNA\_M  
**ClientSampled :**  
 F9B10

Tgt Ion: 94 Resp: 1025330

Ion	Ratio	Lower	Upper
94	100		
65	30.3	25.8	38.8
66	40.8	33.3	49.9

**Manual Integrations**  
**APPROVED**

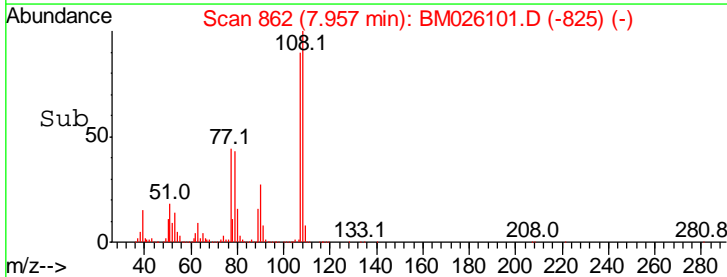
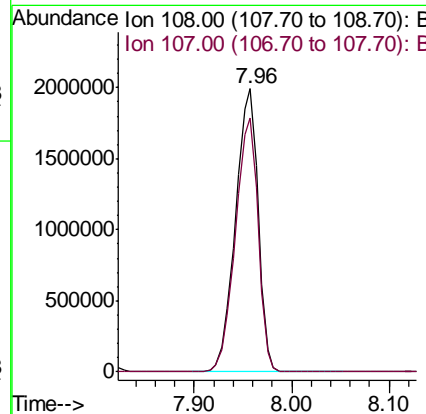
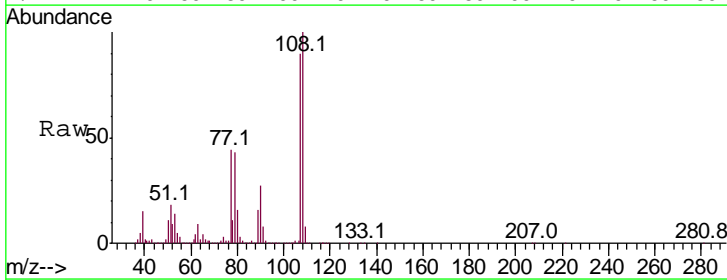
mohammad  
 5/26/2020 10:11:58 AM

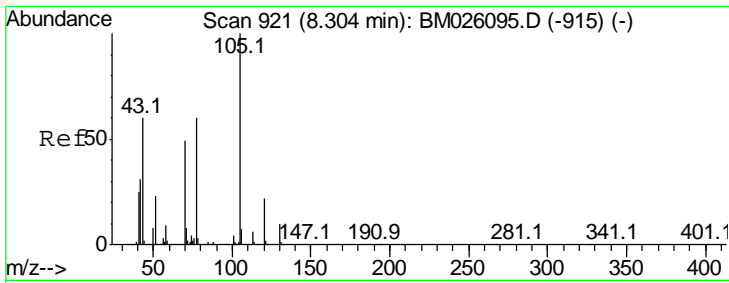


#11  
 2-Methylphenol  
 Concen: 205.989 ng/ul  
 RT: 7.96 min Scan# 862  
 Delta R.T. 0.02 min  
 Lab File: BM026101.D  
 Acq: 23 May 2020 04:53

Tgt Ion: 108 Resp: 3199976

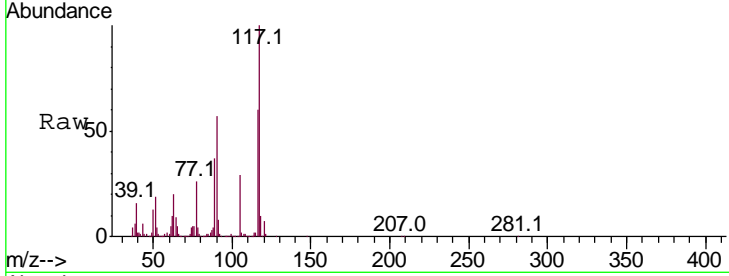
Ion	Ratio	Lower	Upper
108	100		
107	89.7	72.3	108.5





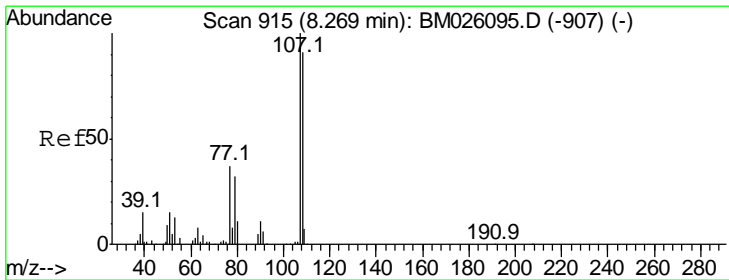
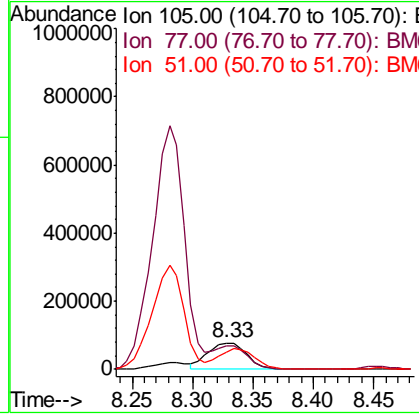
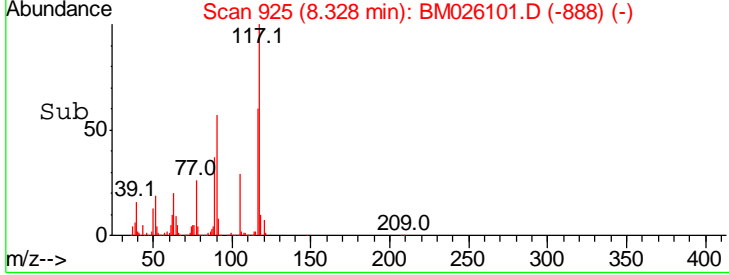
#14  
 Acetophenone  
 Concen: 6.693 ng/ul  
 RT: 8.33 min Scan# 925  
 Delta R.T. 0.02 min  
 Lab File: BM026101.D  
 Acq: 23 May 2020 04:53

**Instrument :**  
 BNA\_M  
**ClientSampled :**  
 F9B10



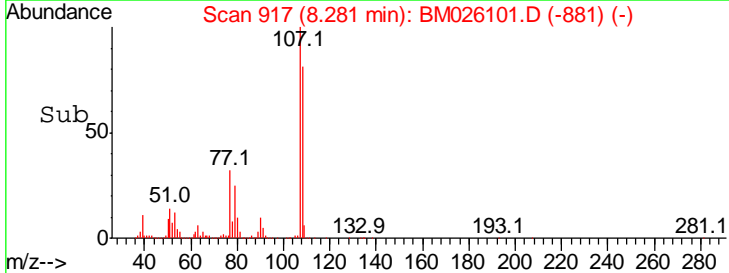
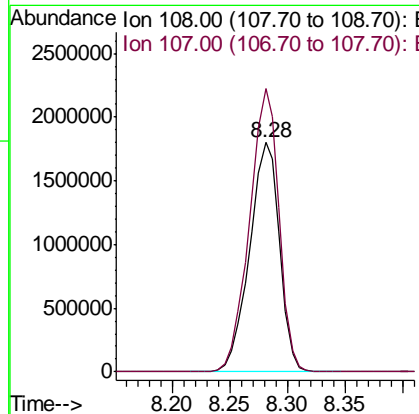
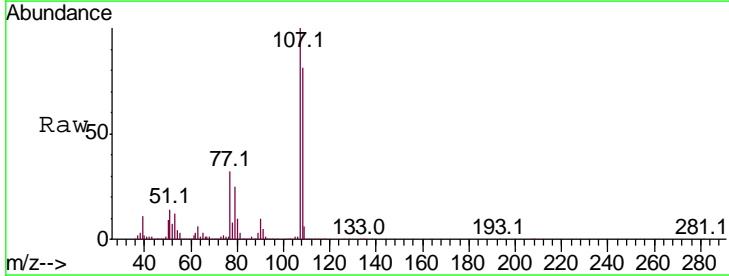
Tgt Ion	Resp	Lower	Upper
105	100		
77	90.0	67.2	100.8
51	66.6	27.4	41.0

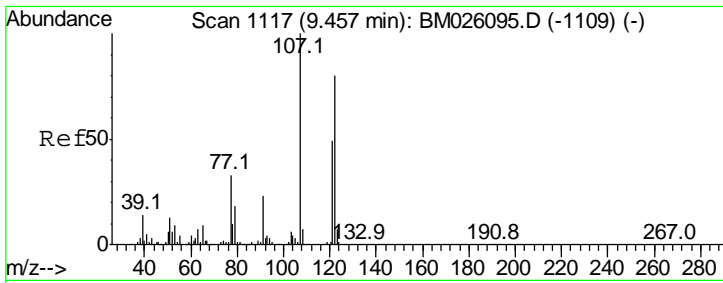
**Manual Integrations**  
**APPROVED**  
 mohammad  
 5/26/2020 10:11:58 AM



#16  
 4-Methylphenol  
 Concen: 192.731 ng/ul  
 RT: 8.28 min Scan# 917  
 Delta R.T. 0.01 min  
 Lab File: BM026101.D  
 Acq: 23 May 2020 04:53

Tgt Ion	Resp	Lower	Upper
108	100		
107	123.3	88.6	132.8





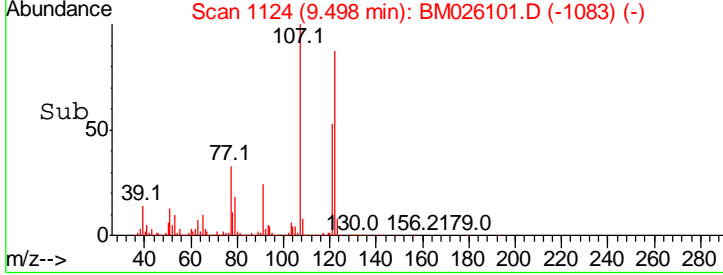
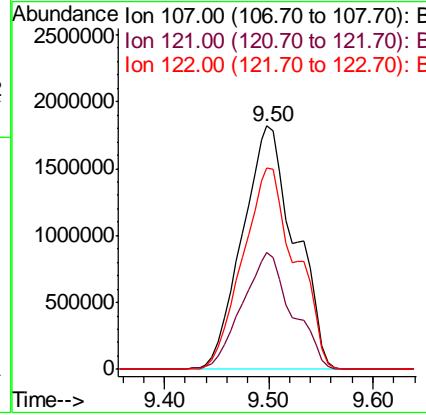
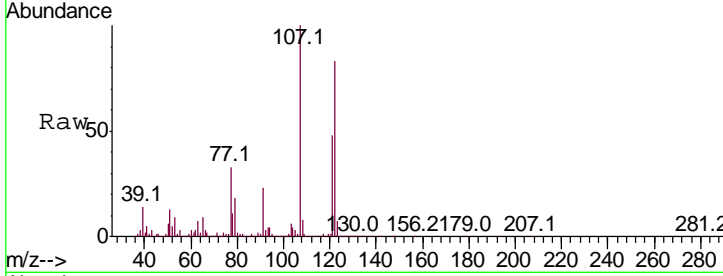
#24  
 2,4-Dimethylphenol  
 Concen: 335.877 ng/ul m  
 RT: 9.50 min Scan# 1124  
 Delta R.T. 0.04 min  
 Lab File: BM026101.D  
 Acq: 23 May 2020 04:53

**Instrument :**  
 BNA\_M  
**ClientSampled :**  
 F9B10

Tgt Ion	Resp	Lower	Upper
107	100		
121	47.8	37.5	56.3
122	82.7	63.8	95.6

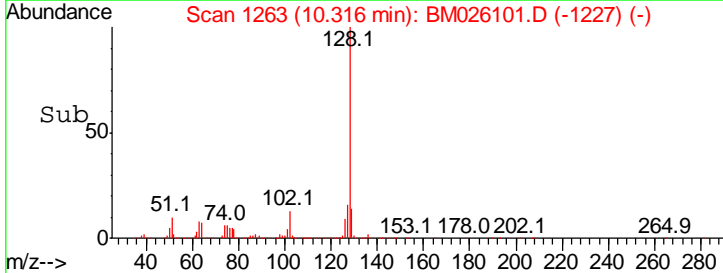
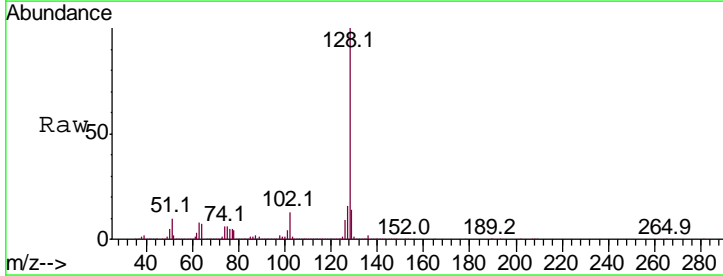
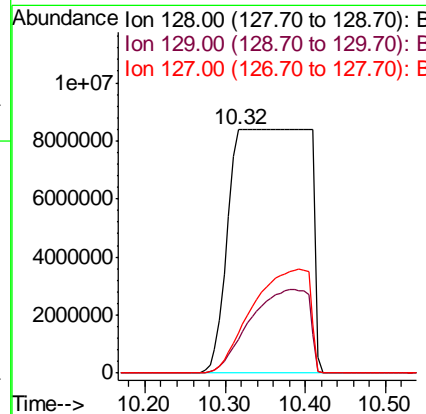
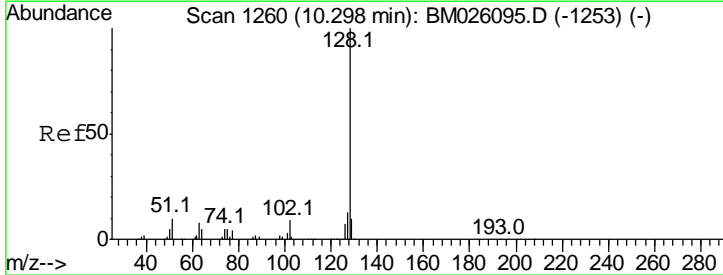
**Manual Integrations**  
**APPROVED**

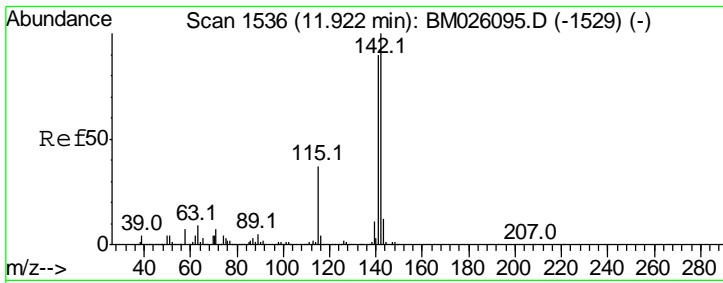
mohammad  
 5/26/2020 10:11:58 AM



#28  
 Naphthalene  
 Concen: 1108.990 ng/ul m  
 RT: 10.32 min Scan# 1263  
 Delta R.T. 0.01 min  
 Lab File: BM026101.D  
 Acq: 23 May 2020 04:53

Tgt Ion	Resp	Lower	Upper
128	100		
129	13.9	9.0	13.4#
127	16.2	10.6	15.8#





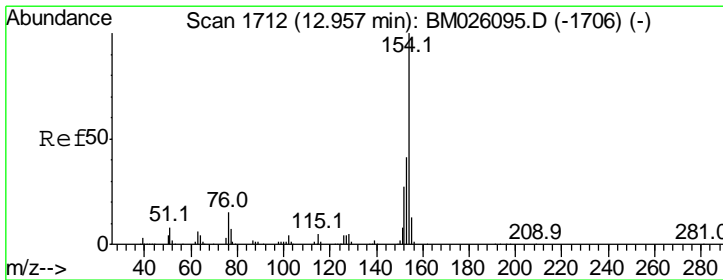
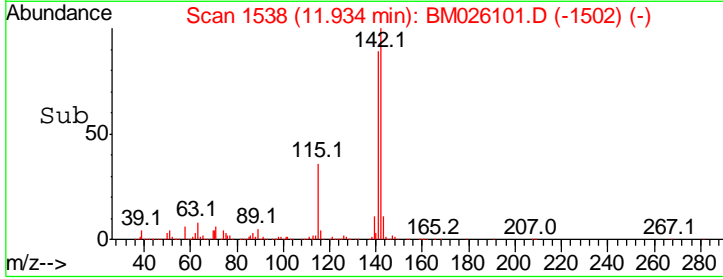
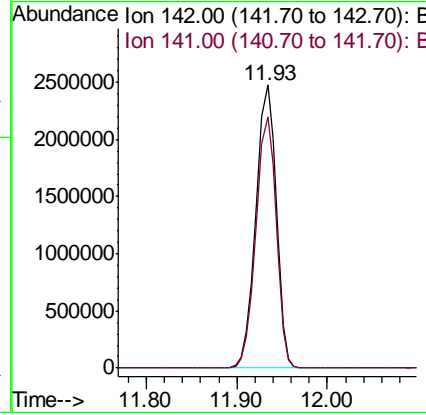
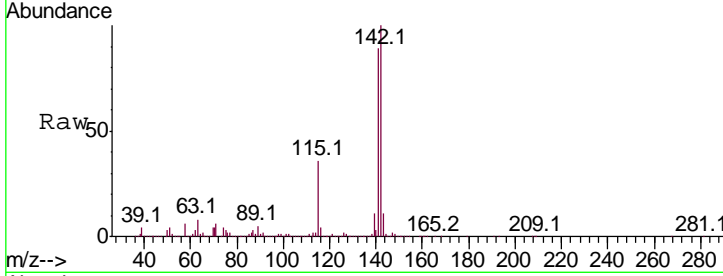
#34  
 2-Methylnaphthalene  
 Concen: 110.731 ng/ul  
 RT: 11.93 min Scan# 1538  
 Delta R.T. 0.01 min  
 Lab File: BM026101.D  
 Acq: 23 May 2020 04:53

**Instrument :**  
 BNA\_M  
**ClientSampled :**  
 F9B10

Tgt Ion	Resp	Lower	Upper
142	100		
141	88.8	71.8	107.6

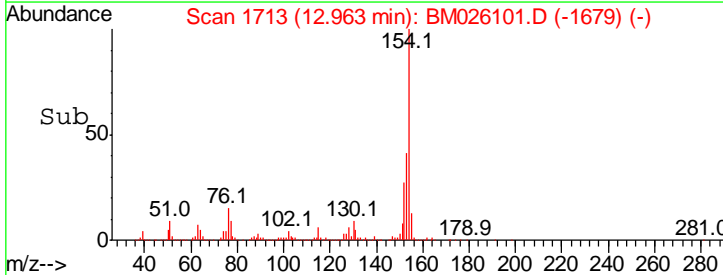
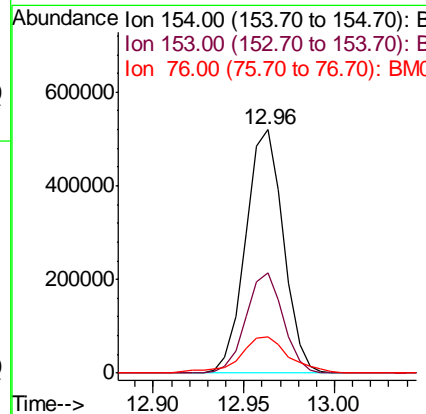
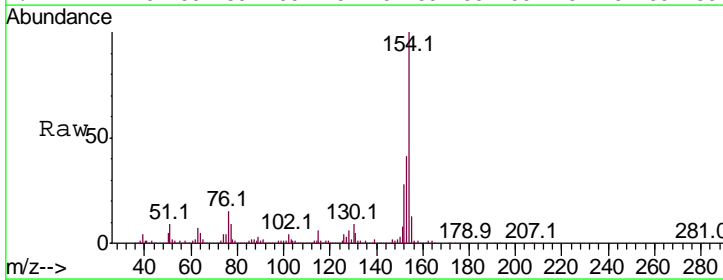
**Manual Integrations**  
**APPROVED**

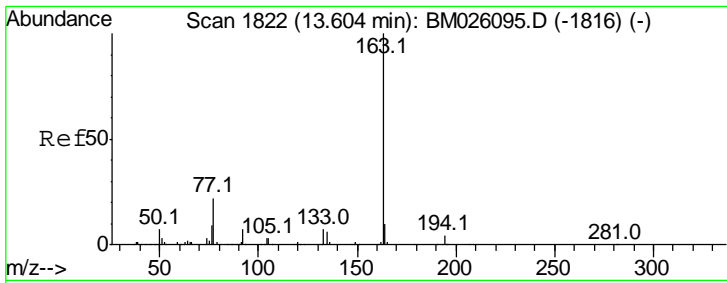
mohammad  
 5/26/2020 10:11:58 AM



#41  
 1,1'-Biphenyl  
 Concen: 15.997 ng/ul  
 RT: 12.96 min Scan# 1713  
 Delta R.T. 0.00 min  
 Lab File: BM026101.D  
 Acq: 23 May 2020 04:53

Tgt Ion	Resp	Lower	Upper
154	100		
153	41.2	32.3	48.5
76	15.0	13.0	19.6





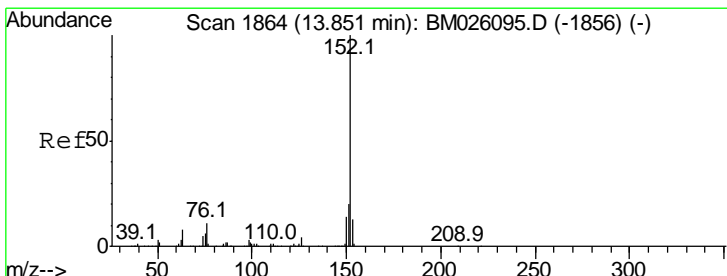
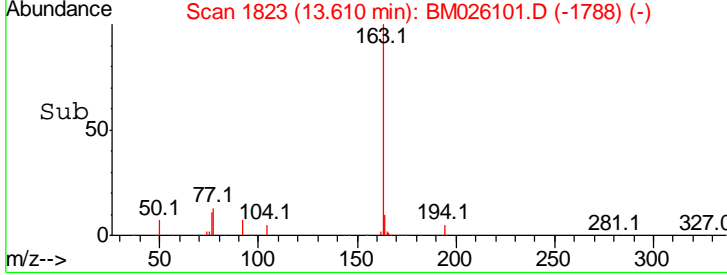
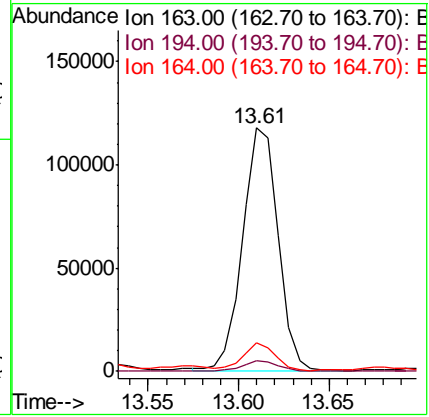
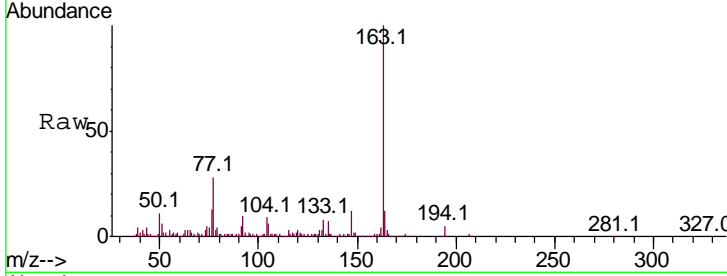
#45  
 Dimethylphthalate  
 Concen: 3.581 ng/ul  
 RT: 13.61 min Scan# 1823  
 Delta R.T. 0.01 min  
 Lab File: BM026101.D  
 Acq: 23 May 2020 04:53

**Instrument :**  
 BNA\_M  
**ClientSampled :**  
 F9B10

Tgt Ion	Resp	Lower	Upper
163	100		
194	4.6	3.2	4.8
164	11.5	8.0	12.0

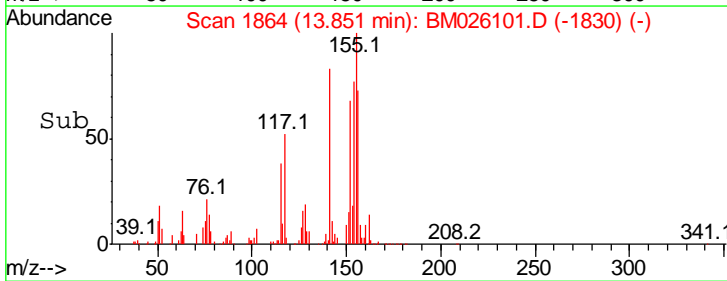
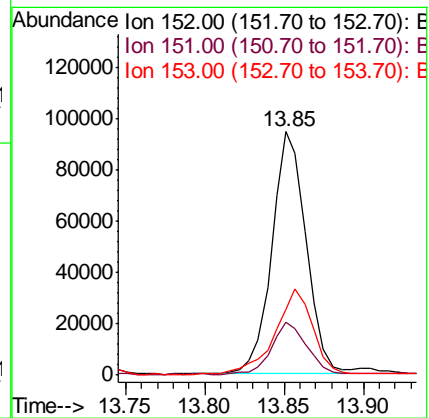
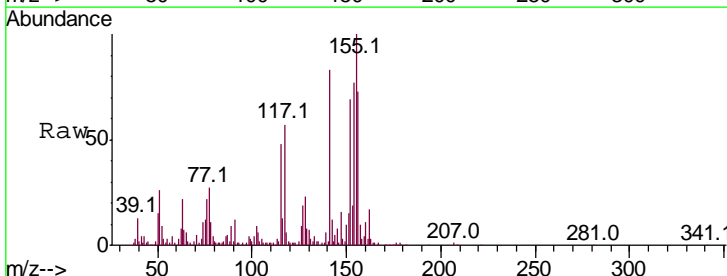
**Manual Integrations**  
**APPROVED**

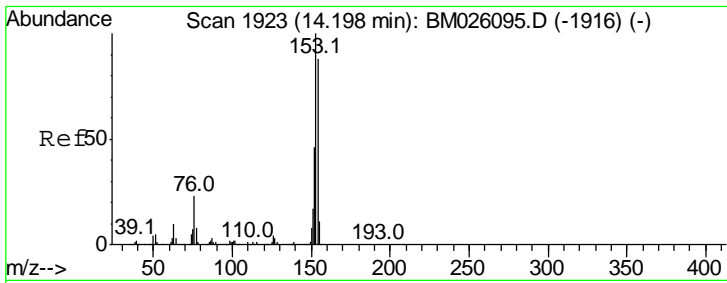
mohammad  
 5/26/2020 10:11:58 AM



#48  
 Acenaphthylene  
 Concen: 2.581 ng/ul  
 RT: 13.85 min Scan# 1864  
 Delta R.T. 0.00 min  
 Lab File: BM026101.D  
 Acq: 23 May 2020 04:53

Tgt Ion	Resp	Lower	Upper
152	100		
151	21.8	15.7	23.5
153	27.1	10.2	15.2#





#50  
 Acenaphthene  
 Concen: 226.035 ng/ul  
 RT: 14.22 min Scan# 1926  
 Delta R.T. 0.02 min  
 Lab File: BM026101.D  
 Acq: 23 May 2020 04:53

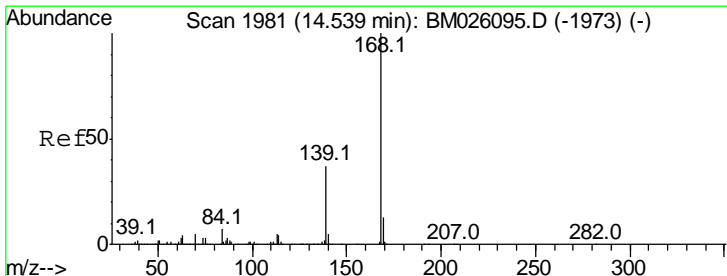
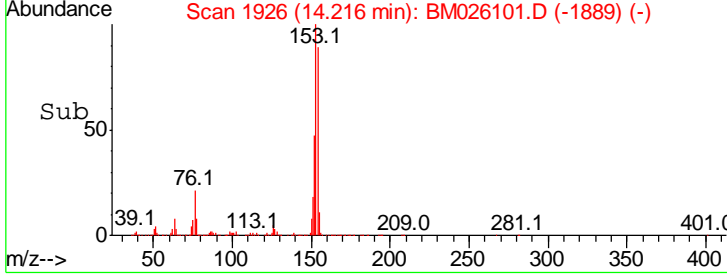
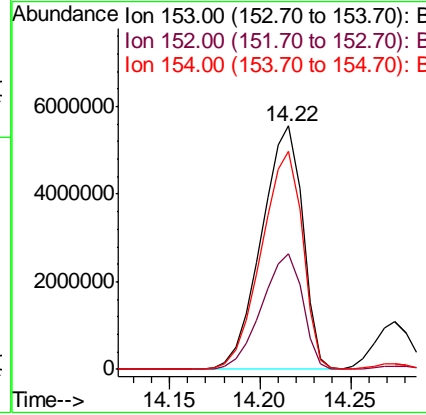
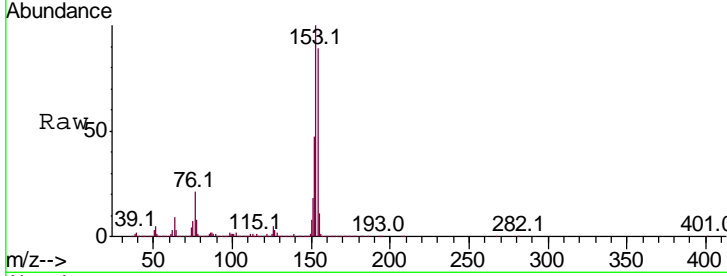
Instrument :  
 BNA\_M  
 ClientSampled :  
 F9B10

Tgt Ion:153 Resp: 8790087

Ion	Ratio	Lower	Upper
153	100		
152	47.3	37.2	55.8
154	89.5	69.8	104.8

Manual Integrations  
 APPROVED

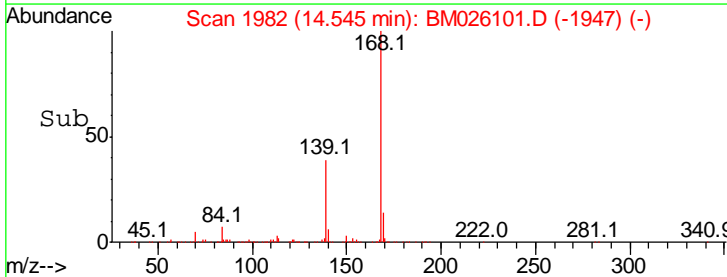
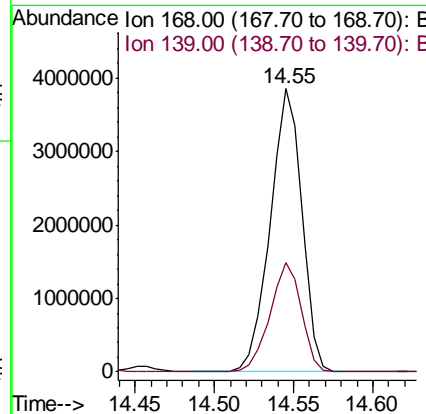
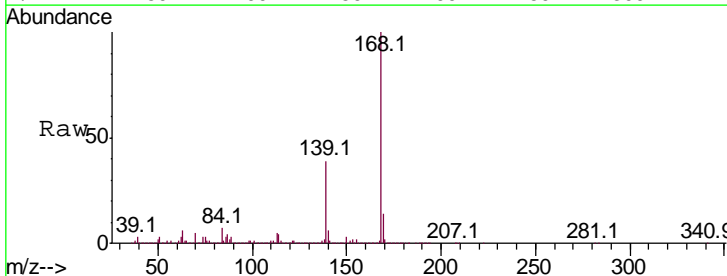
mohammad  
 5/26/2020 10:11:58 AM



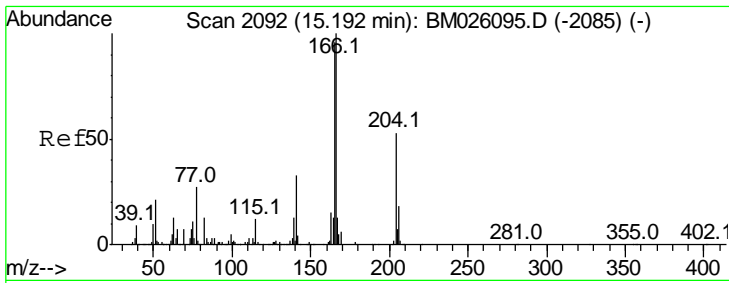
#54  
 Dibenzofuran  
 Concen: 98.362 ng/ul  
 RT: 14.55 min Scan# 1982  
 Delta R.T. 0.01 min  
 Lab File: BM026101.D  
 Acq: 23 May 2020 04:53

Tgt Ion:168 Resp: 5375599

Ion	Ratio	Lower	Upper
168	100		
139	38.6	30.7	46.1







#59  
 Fluorene  
 Concen: 104.941 ng/ul  
 RT: 15.20 min Scan# 2093  
 Delta R.T. 0.01 min  
 Lab File: BM026101.D  
 Acq: 23 May 2020 04:53

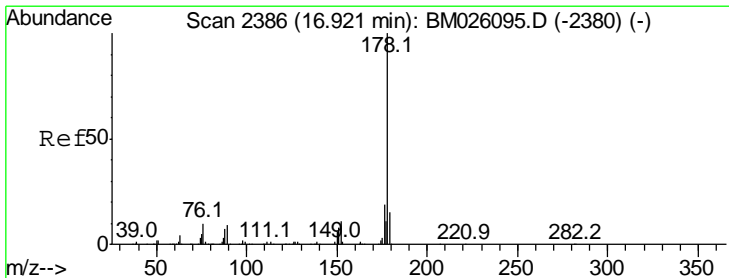
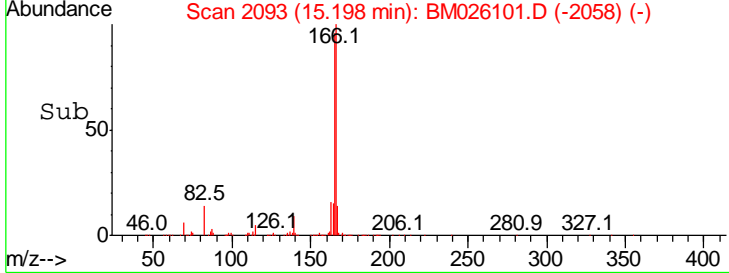
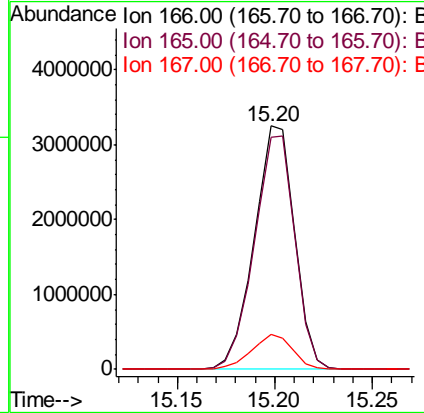
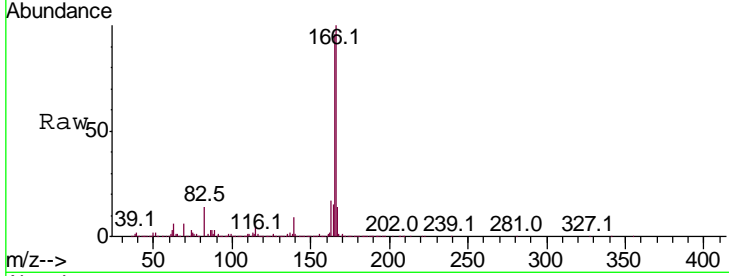
**Instrument :**  
 BNA\_M  
**ClientSampled :**  
 F9B10

Tgt Ion:166 Resp: 4639345

Ion	Ratio	Lower	Upper
166	100		
165	95.6	77.3	115.9
167	14.1	10.6	16.0

**Manual Integrations**  
**APPROVED**

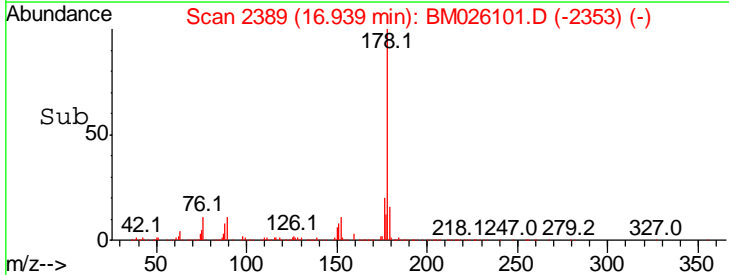
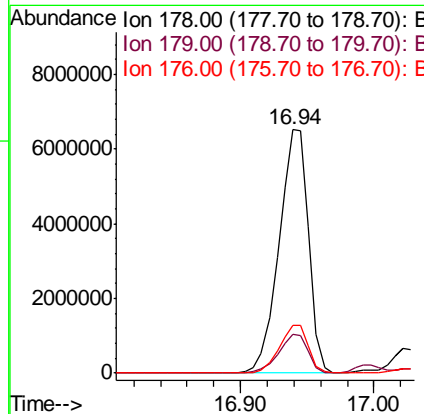
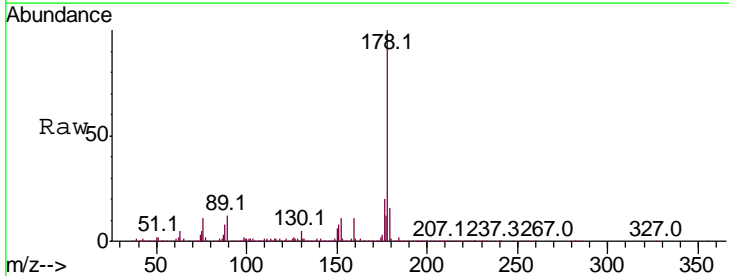
mohammad  
 5/26/2020 10:11:58 AM

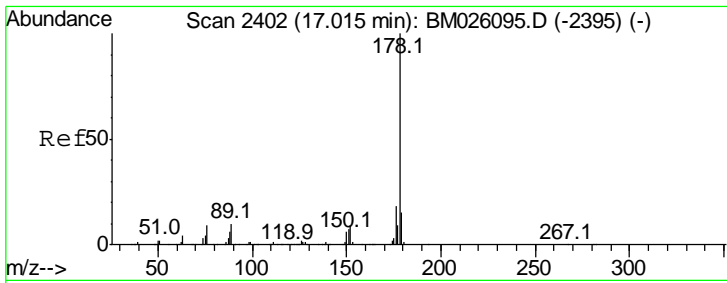


#70  
 Phenanthrene  
 Concen: 147.464 ng/ul  
 RT: 16.94 min Scan# 2389  
 Delta R.T. 0.01 min  
 Lab File: BM026101.D  
 Acq: 23 May 2020 04:53

Tgt Ion:178 Resp:10032715

Ion	Ratio	Lower	Upper
178	100		
179	16.0	11.9	17.9
176	19.6	14.9	22.3





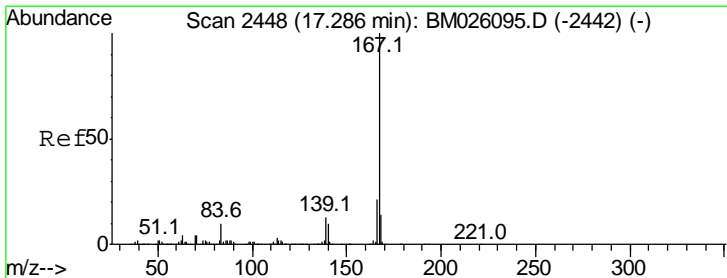
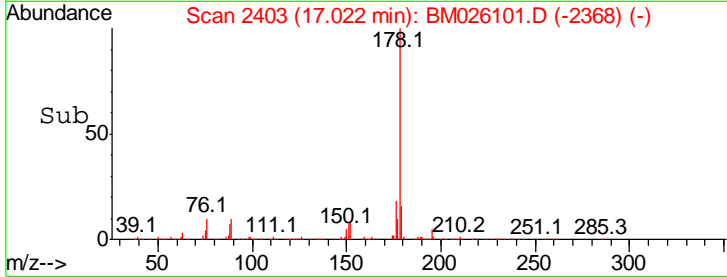
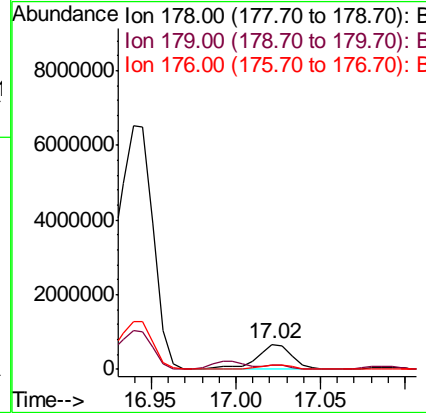
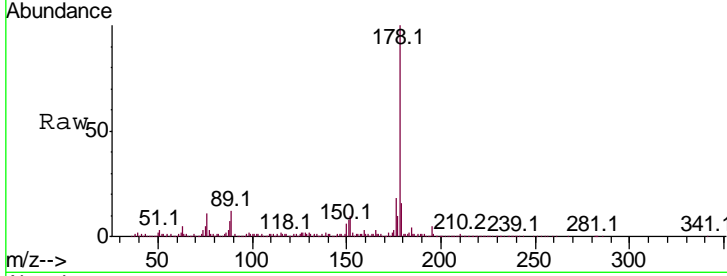
#72  
 Anthracene  
 Concen: 14.310 ng/ul  
 RT: 17.02 min Scan# 2403  
 Delta R.T. 0.01 min  
 Lab File: BM026101.D  
 Acq: 23 May 2020 04:53

**Instrument :**  
 BNA\_M  
**ClientSampled :**  
 F9B10

Tgt Ion	Resp	Lower	Upper
178	100		
179	16.3	12.2	18.4
176	18.1	14.9	22.3

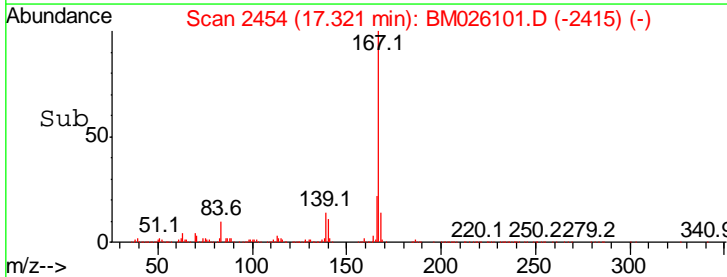
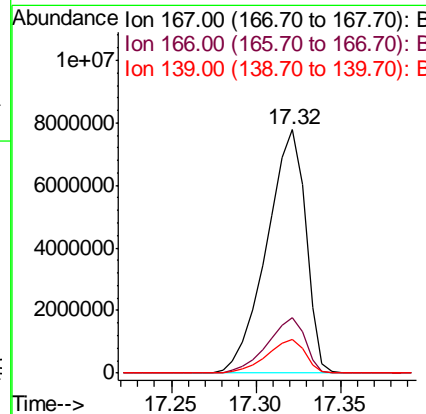
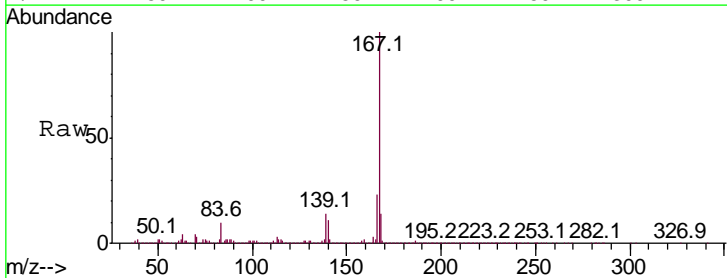
**Manual Integrations**  
**APPROVED**

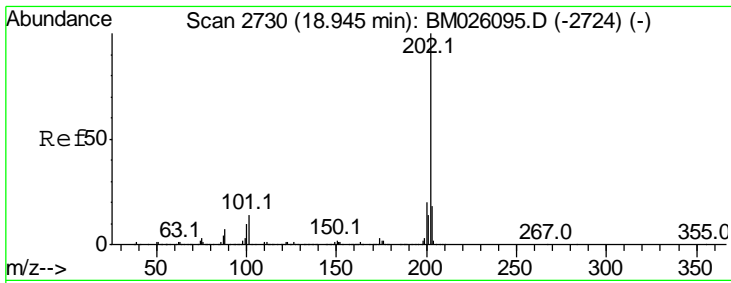
mohammad  
 5/26/2020 10:11:58 AM



#75  
 Carbazole  
 Concen: 219.295 ng/ul  
 RT: 17.32 min Scan# 2454  
 Delta R.T. 0.03 min  
 Lab File: BM026101.D  
 Acq: 23 May 2020 04:53

Tgt Ion	Resp	Lower	Upper
167	100		
166	22.5	16.6	25.0
139	13.9	10.8	16.2





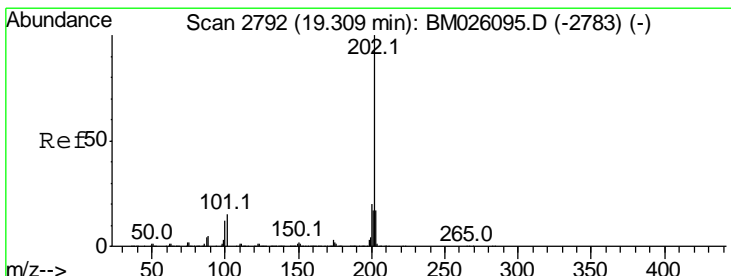
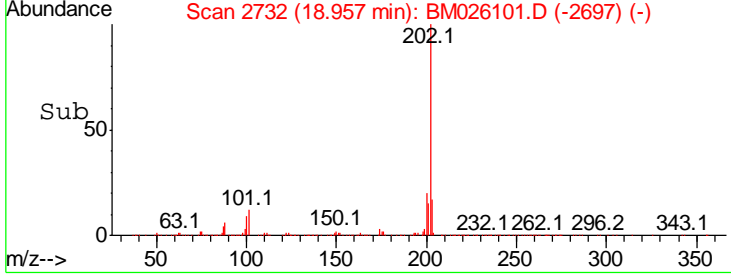
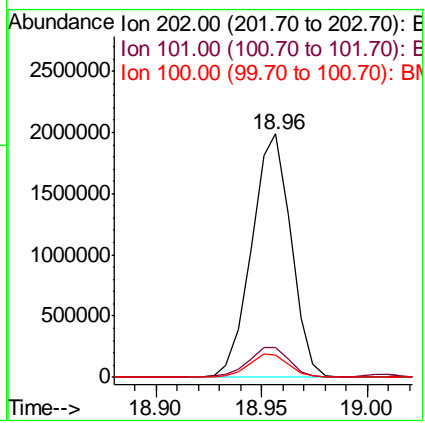
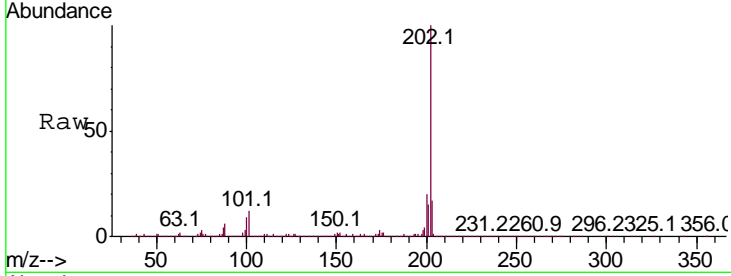
#77  
 Fluoranthene  
 Concen: 36.019 ng/ul  
 RT: 18.96 min Scan# 2732  
 Delta R.T. 0.01 min  
 Lab File: BM026101.D  
 Acq: 23 May 2020 04:53

**Instrument :**  
 BNA\_M  
**ClientSampled :**  
 F9B10

Tgt Ion: 202 Resp: 2570534

Ion	Ratio	Lower	Upper
202	100		
101	12.2	9.5	14.3
100	9.3	7.6	11.4

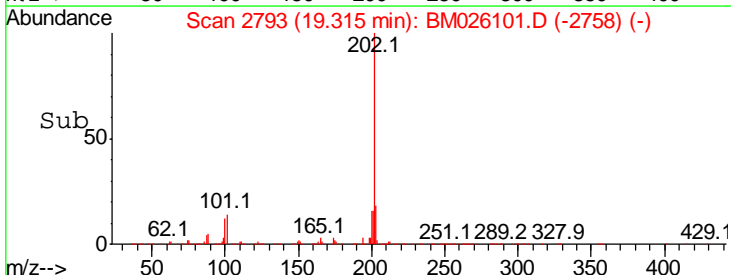
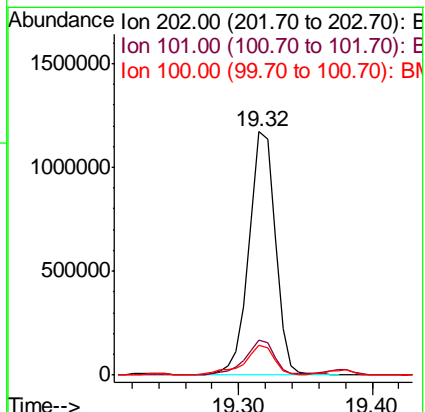
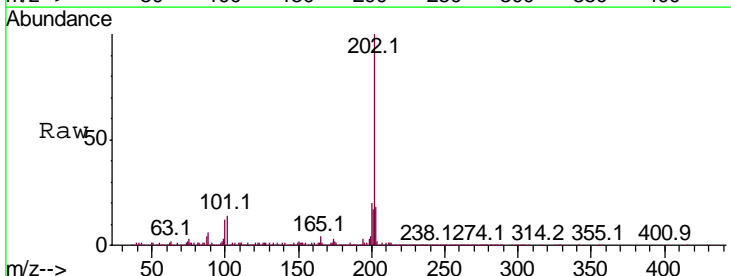
**Manual Integrations**  
**APPROVED**  
 mohammad  
 5/26/2020 10:11:58 AM

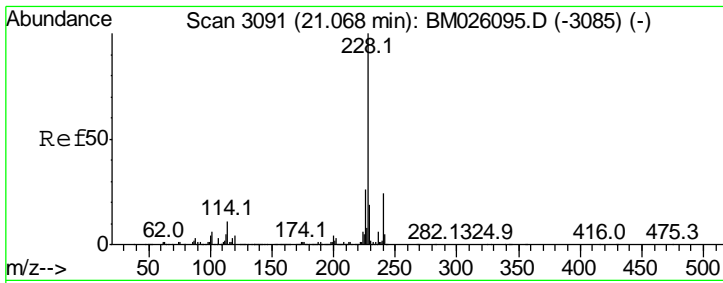


#80  
 Pyrene  
 Concen: 21.112 ng/ul  
 RT: 19.32 min Scan# 2793  
 Delta R.T. 0.01 min  
 Lab File: BM026101.D  
 Acq: 23 May 2020 04:53

Tgt Ion: 202 Resp: 1592945

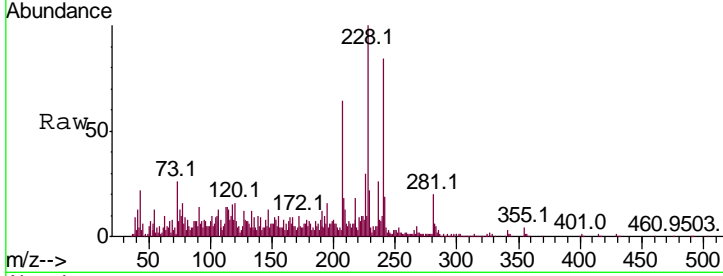
Ion	Ratio	Lower	Upper
202	100		
101	14.3	12.2	18.4
100	12.1	10.2	15.4





#83  
 Benzo(a)anthracene  
 Concen: 1.468 ng/ul  
 RT: 21.07 min Scan# 3091  
 Delta R.T. 0.00 min  
 Lab File: BM026101.D  
 Acq: 23 May 2020 04:53

**Instrument :**  
 BNA\_M  
**ClientSampled :**  
 F9B10



Tot Ion: 228 Resp: 108780

Ion	Ratio	Lower	Upper
228	100		
229	22.3	15.5	23.3
226	29.9	21.2	31.8

**Manual Integrations**  
**APPROVED**  
 mohammad  
 5/26/2020 10:11:58 AM

