

Data Path : Z:\HPCHEM1\BNA M\DATA\BM052317\
 Data File : BM010161.D
 Acq On : 24 May 2017 03:11
 Operator : SJ/MA
 Sample : I3221-05
 Misc :
 ALS Vial : 26 Sample Multiplier: 1

Instrument :
 BNA_M
 ClientSampleId :

Quant Time: May 24 05:28:19 2017
 Quant Method : Z:\HPCHEM1\BNA M\METHODS\8270-BM051917.M
 Quant Title : ASP BNA STANDARDS FOR 5 POINT CALIBRATION
 QLast Update : Sat May 20 04:25:49 2017
 Response via : Initial Calibration

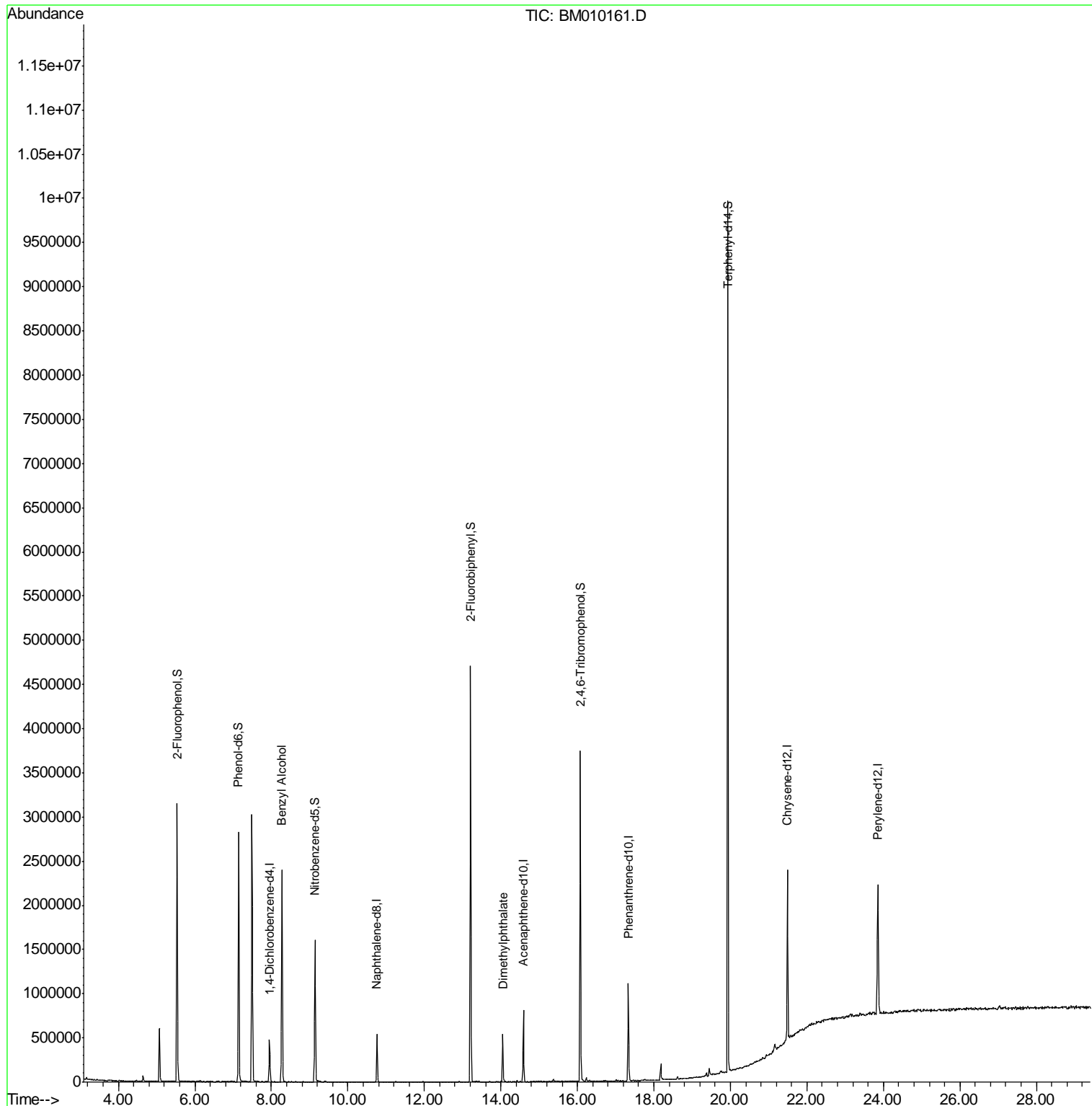
Internal Standards	R.T.	QIon	Response	Conc	Units	Dev(Min)
1) 1,4-Dichlorobenzene-d4	7.96	152	119863	20.00	ng	-0.02
21) Naphthalene-d8	10.76	136	394394	20.00	ng	-0.02
38) Acenaphthene-d10	14.59	164	245776	20.00	ng	-0.02
63) Phenanthrene-d10	17.33	188	618672	20.00	ng	-0.02
75) Chrysene-d12	21.49	240	1004383	20.00	ng	-0.02
86) Perylene-d12	23.85	264	1202051	20.00	ng	-0.04
System Monitoring Compounds						
5) 2-Fluorophenol	5.53	112	1108085	166.94	ng	-0.02
7) Phenol-d6	7.15	99	1383821	162.02	ng	-0.02
23) Nitrobenzene-d5	9.14	82	898539	122.92	ng	-0.03
41) 2,4,6-Tribromophenol	16.08	330	647953	173.58	ng	-0.02
44) 2-Fluorobiphenyl	13.21	172	2207513	115.47	ng	-0.02
78) Terphenyl-d14	19.93	244	3959214	89.63	ng	-0.02
Target Compounds						
15) Benzyl Alcohol	8.27	79	19450	3.01	ng	# 40
49) Dimethylphthalate	14.04	163	315944	14.41	ng	# 98

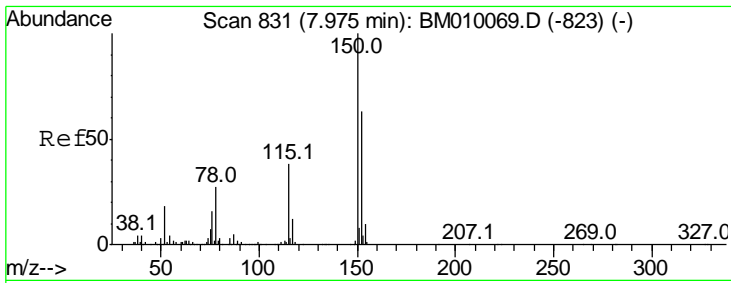
(#) = qualifier out of range (m) = manual integration (+) = signals summed

Data Path : Z:\HPCHEM1\BNA M\DATA\BM052317\
 Data File : BM010161.D
 Acq On : 24 May 2017 03:11
 Operator : SJ/MA
 Sample : I3221-05
 Misc :
 ALS Vial : 26 Sample Multiplier: 1

Instrument :
 BNA_M
 ClientSampled :

Quant Time: May 24 05:28:19 2017
 Quant Method : Z:\HPCHEM1\BNA M\METHODS\8270-BM051917.M
 Quant Title : ASP BNA STANDARDS FOR 5 POINT CALIBRATION
 QLast Update : Sat May 20 04:25:49 2017
 Response via : Initial Calibration

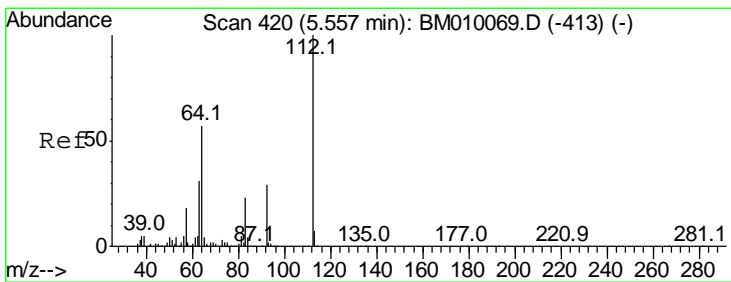
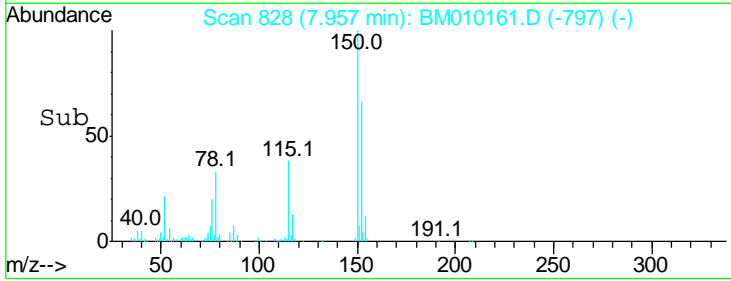
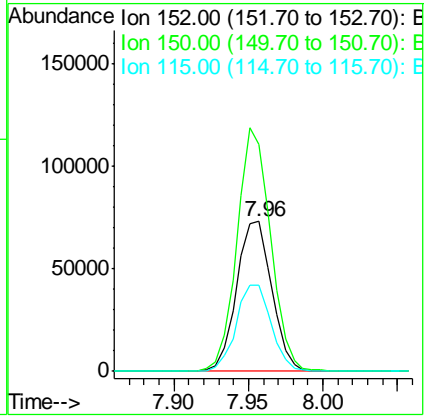
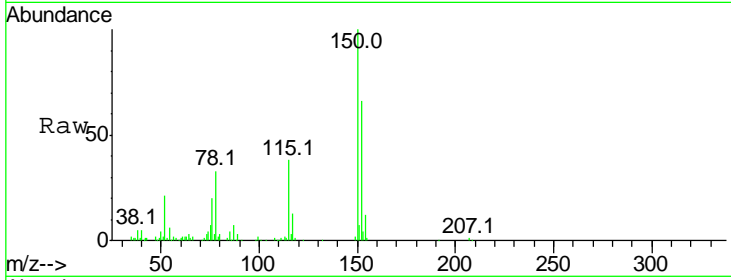




#1
 1,4-Dichlorobenzene-d4
 Concen: 20.00 ng
 RT: 7.96 min Scan# 828
 Delta R.T. -0.02 min
 Lab File: BM010161.D
 Acq: 24 May 2017 03:11

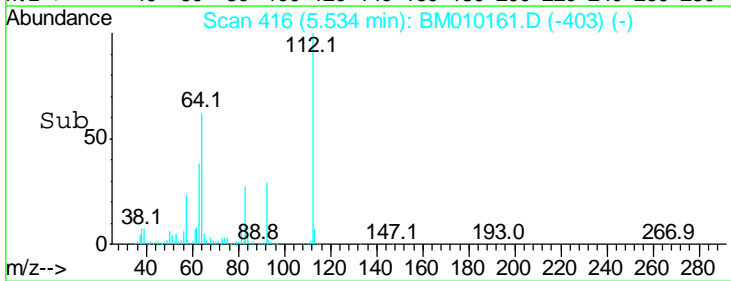
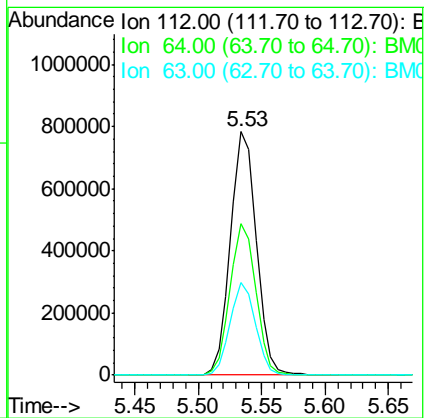
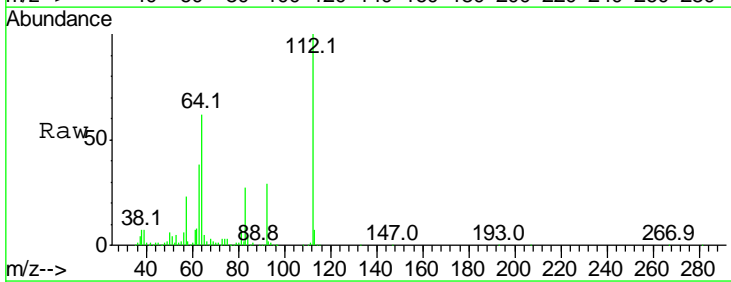
Instrument :
 BNA_M
 ClientSampled :

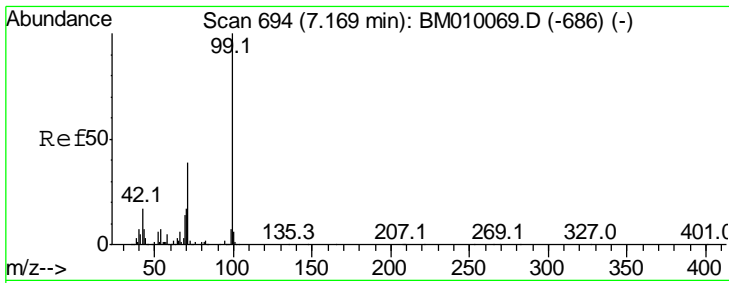
Tgt Ion	Resp	Lower	Upper
152	119863		
150	151.3	119.5	179.3
115	57.6	43.0	64.4



#5
 2-Fluorophenol
 Concen: 166.94 ng
 RT: 5.53 min Scan# 416
 Delta R.T. -0.02 min
 Lab File: BM010161.D
 Acq: 24 May 2017 03:11

Tgt Ion	Resp	Lower	Upper
112	1108085		
64	62.4	38.6	57.8#
63	38.3	19.3	28.9#

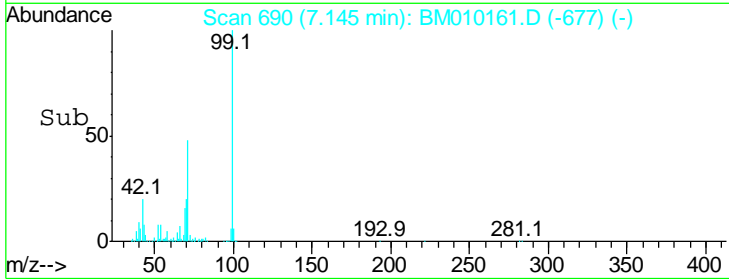
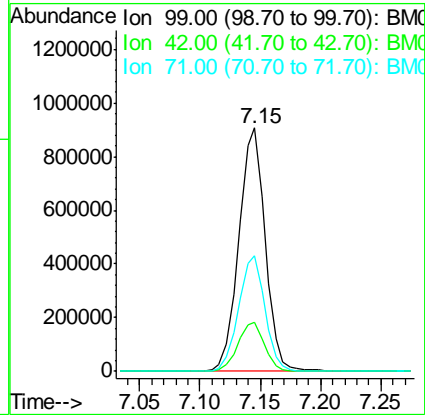
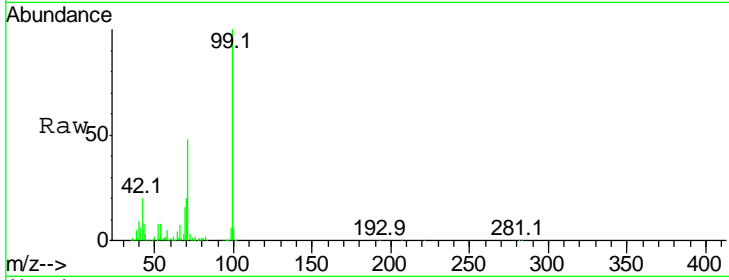




#7
 Phenol-d6
 Concen: 162.02 ng
 RT: 7.15 min Scan# 690
 Delta R.T. -0.02 min
 Lab File: BM010161.D
 Acq: 24 May 2017 03:11

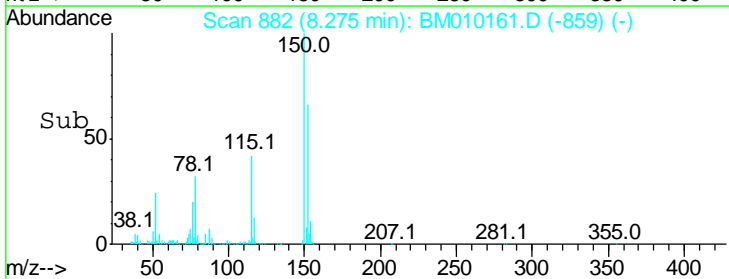
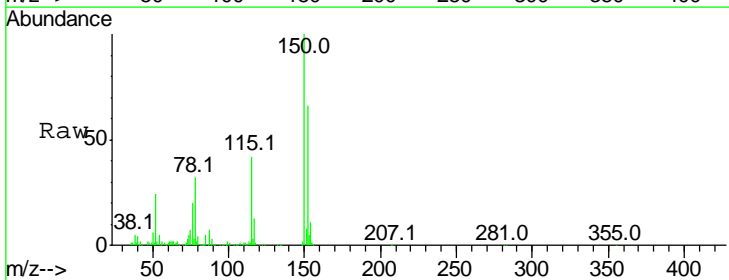
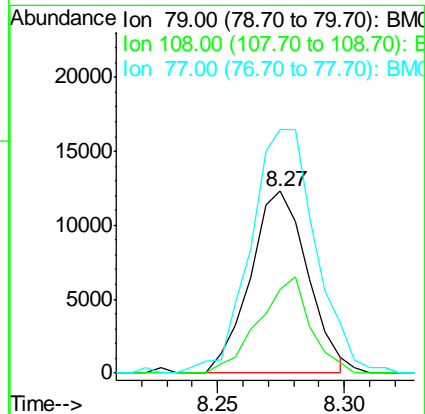
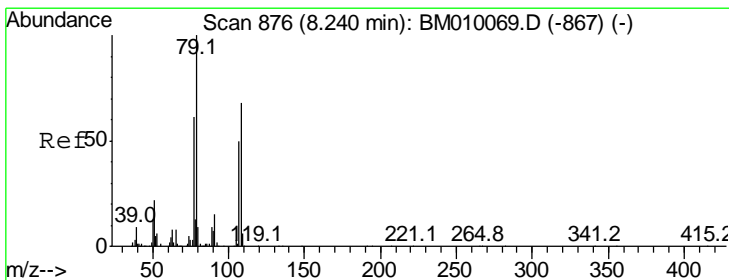
Instrument :
 BNA_M
 ClientSampled :

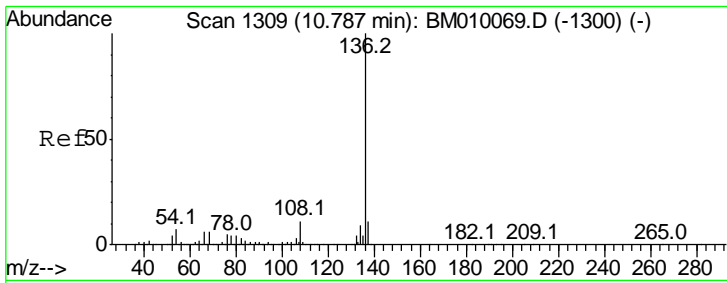
Tgt Ion	Resp	Lower	Upper
99	1383821		
Ion Ratio			
99	100		
42	20.0	11.0	16.4#
71	47.5	23.4	35.2#



#15
 Benzyl Alcohol
 Concen: 3.01 ng
 RT: 8.27 min Scan# 882
 Delta R.T. 0.04 min
 Lab File: BM010161.D
 Acq: 24 May 2017 03:11

Tgt Ion	Resp	Lower	Upper
79	19450		
Ion Ratio			
79	100		
108	46.0	65.0	97.4#
77	133.7	53.0	79.6#

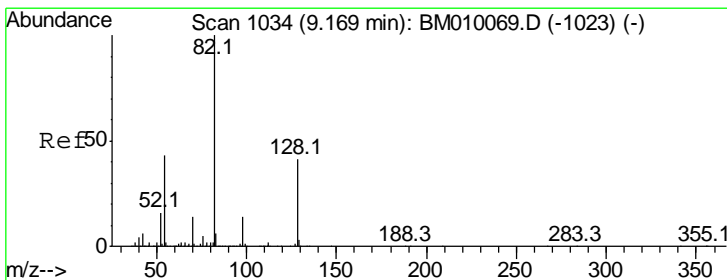
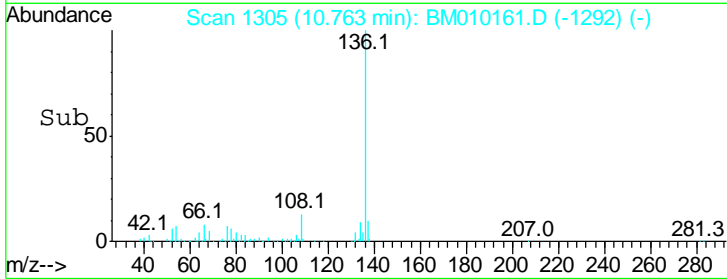
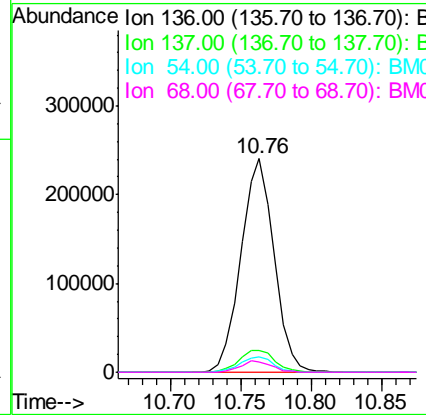
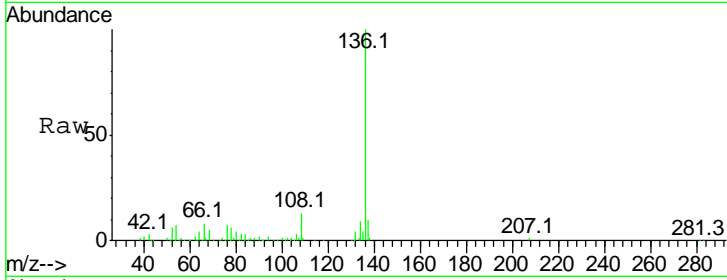




#21
 Naphthalene-d8
 Concen: 20.00 ng
 RT: 10.76 min Scan# 1305
 Delta R.T. -0.02 min
 Lab File: BM010161.D
 Acq: 24 May 2017 03:11

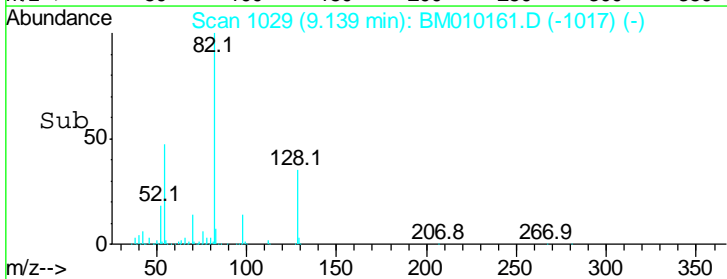
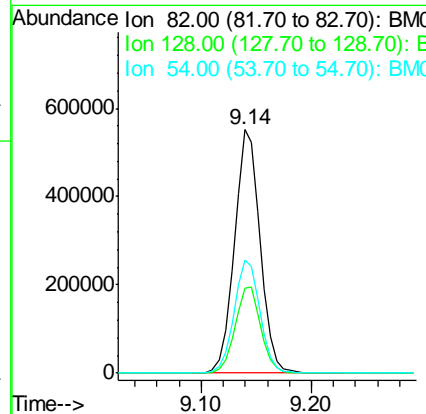
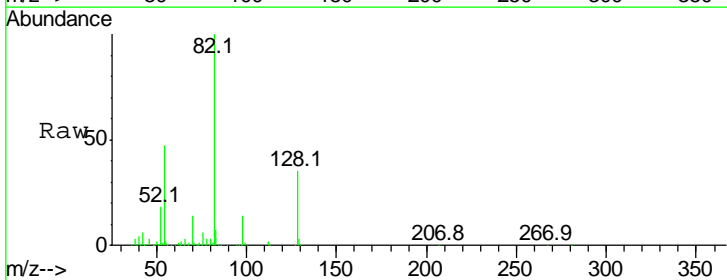
Instrument :
 BNA_M
 ClientSampled :

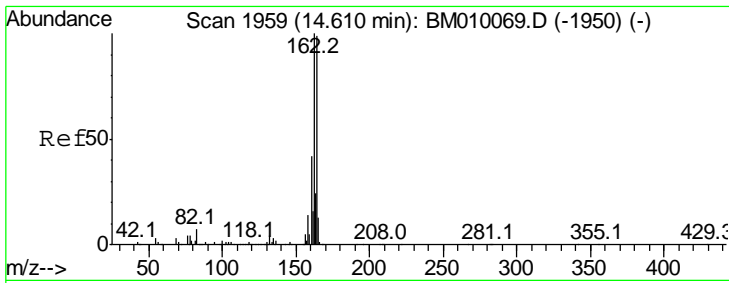
Tgt Ion	Resp	Lower	Upper
136	100		
137	10.5	8.7	13.1
54	7.3	4.6	6.8#
68	4.9	3.7	5.5



#23
 Nitrobenzene-d5
 Concen: 122.92 ng
 RT: 9.14 min Scan# 1029
 Delta R.T. -0.03 min
 Lab File: BM010161.D
 Acq: 24 May 2017 03:11

Tgt Ion	Resp	Lower	Upper
82	100		
128	34.9	32.8	49.2
54	46.5	40.6	60.8

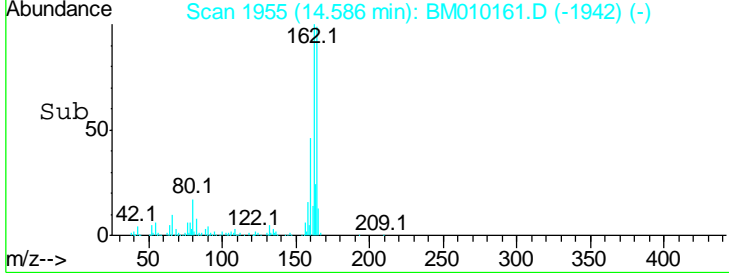
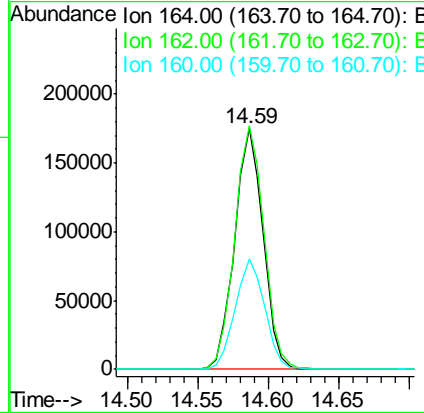
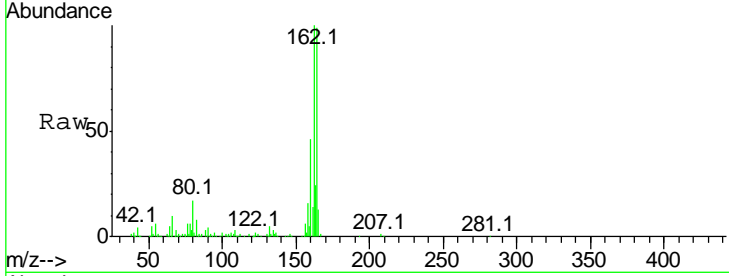




#38
 Acenaphthene-d10
 Concen: 20.00 ng
 RT: 14.59 min Scan# 1955
 Delta R.T. -0.02 min
 Lab File: BM010161.D
 Acq: 24 May 2017 03:11

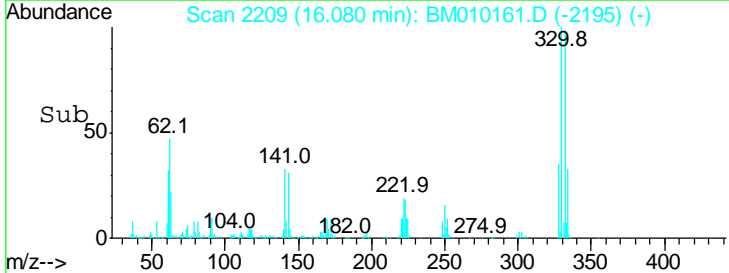
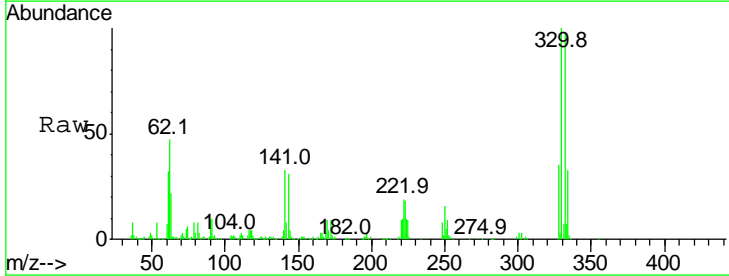
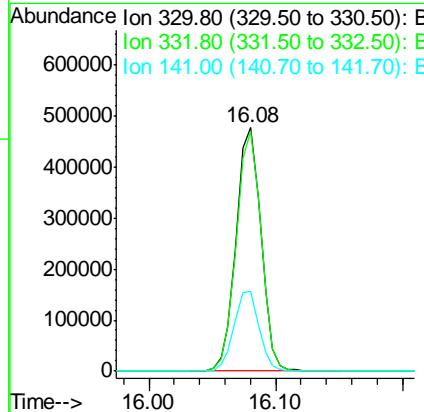
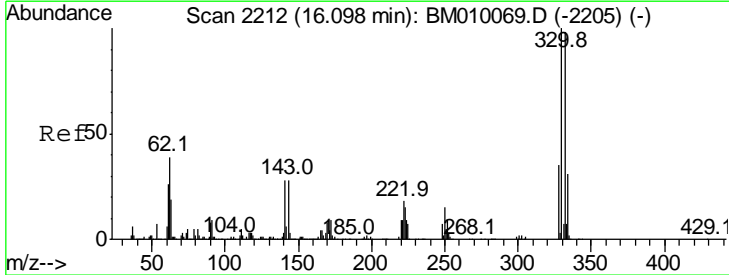
Instrument :
 BNA_M
 ClientSampled :

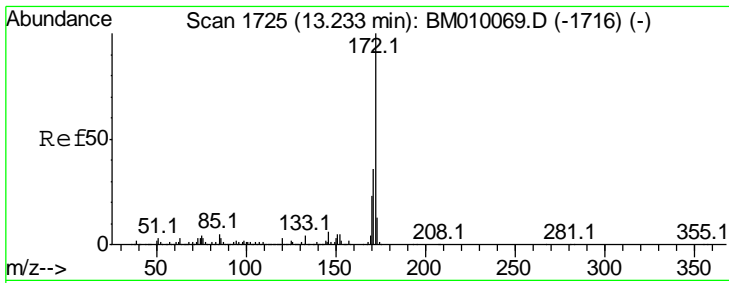
Tgt Ion	Resp	Lower	Upper
164	100		
162	101.2	82.4	123.6
160	46.1	35.8	53.6



#41
 2,4,6-Tribromophenol
 Concen: 173.58 ng
 RT: 16.08 min Scan# 2209
 Delta R.T. -0.02 min
 Lab File: BM010161.D
 Acq: 24 May 2017 03:11

Tgt Ion	Resp	Lower	Upper
330	100		
332	97.8	0.0	0.0#
141	33.2	0.0	0.0#



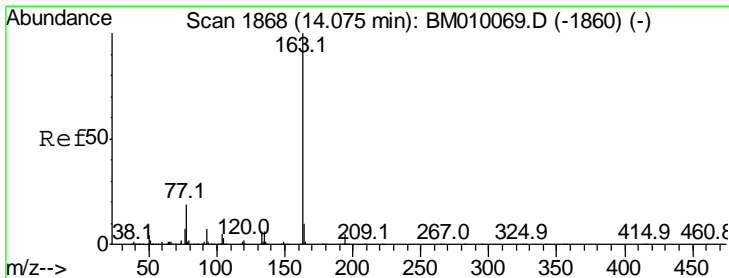
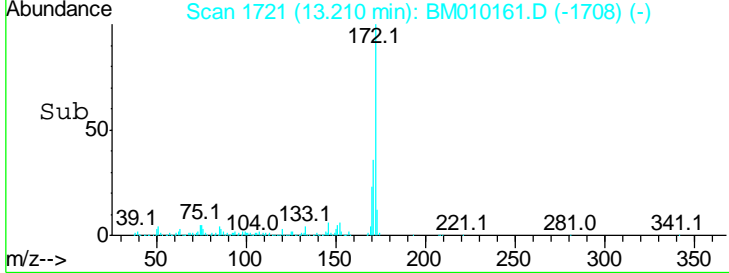
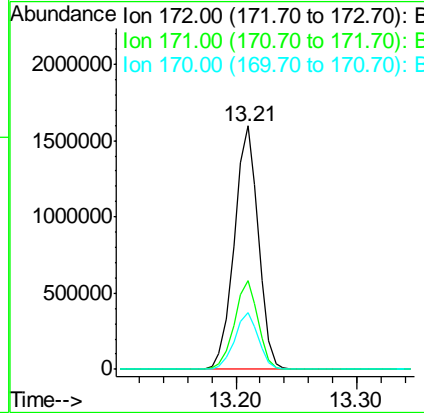
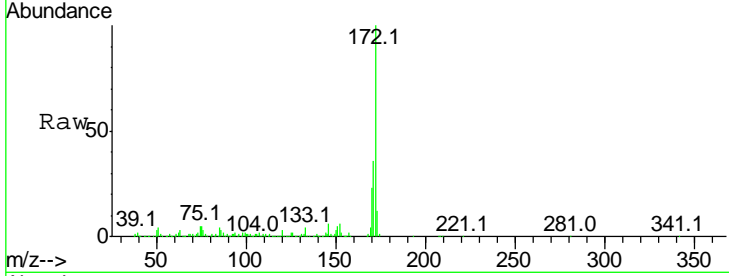


#44
 2-Fluorobiphenyl
 Concen: 115.47 ng
 RT: 13.21 min Scan# 1721
 Delta R.T. -0.02 min
 Lab File: BM010161.D
 Acq: 24 May 2017 03:11

Instrument :
 BNA_M
 ClientSampled :

Tgt Ion:172 Resp: 2207513

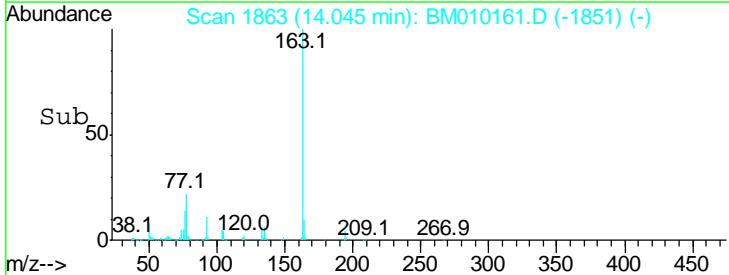
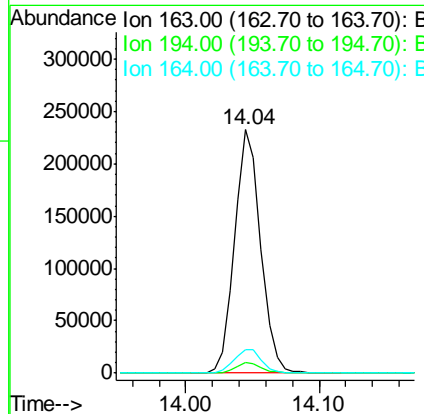
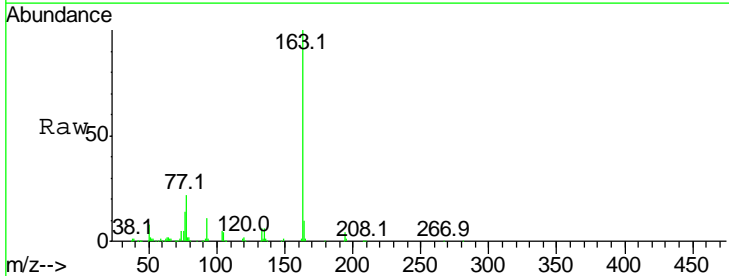
Ion	Ratio	Lower	Upper
172	100		
171	36.2	28.5	42.7
170	23.3	18.8	28.2

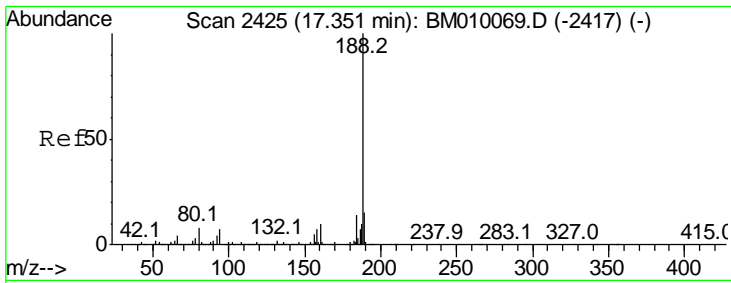


#49
 Dimethylphthalate
 Concen: 14.41 ng
 RT: 14.04 min Scan# 1863
 Delta R.T. -0.03 min
 Lab File: BM010161.D
 Acq: 24 May 2017 03:11

Tgt Ion:163 Resp: 315944

Ion	Ratio	Lower	Upper
163	100		
194	4.2	2.7	4.1#
164	9.7	8.2	12.2

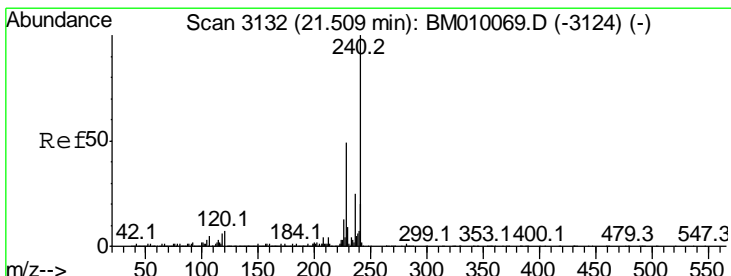
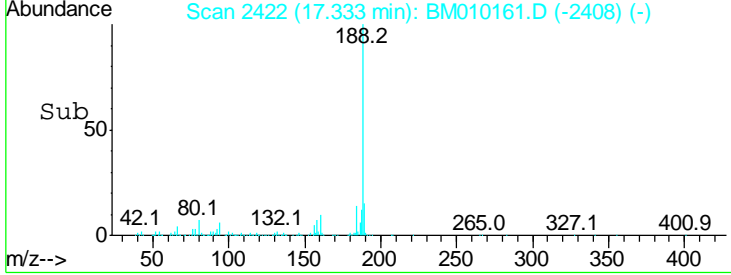
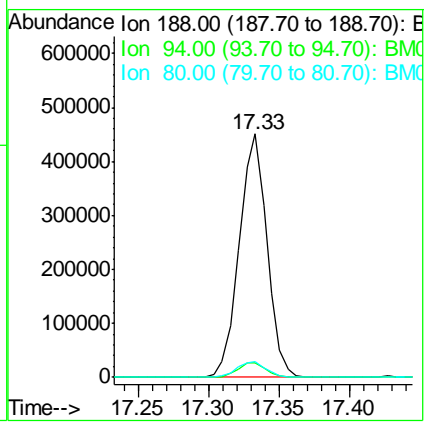
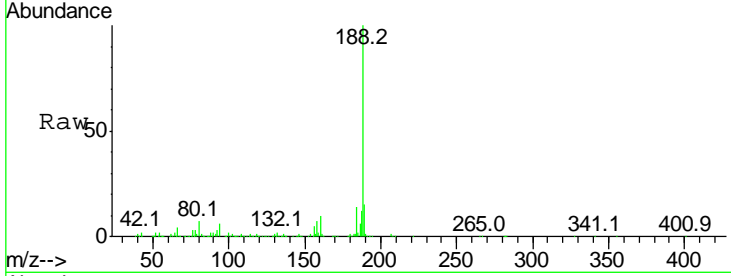




#63
 Phenanthrene-d10
 Concen: 20.00 ng
 RT: 17.33 min Scan# 2422
 Delta R.T. -0.02 min
 Lab File: BM010161.D
 Acq: 24 May 2017 03:11

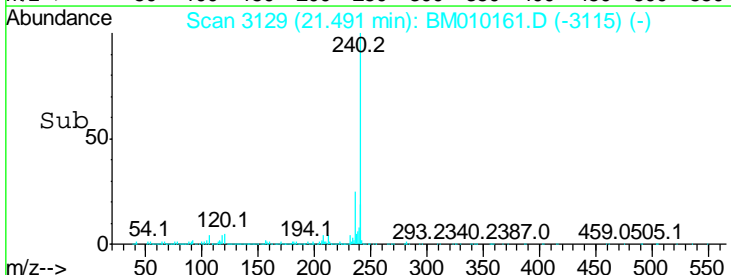
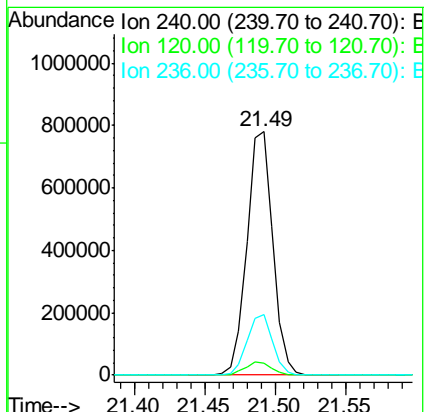
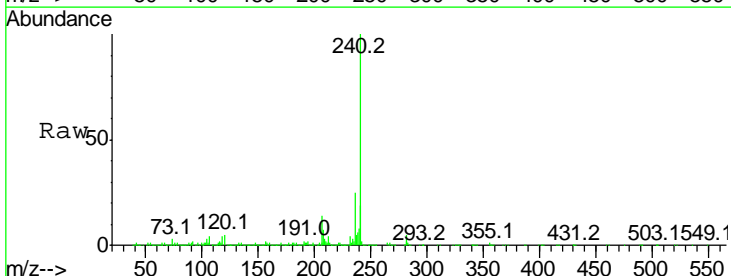
Instrument :
 BNA_M
 ClientSampled :

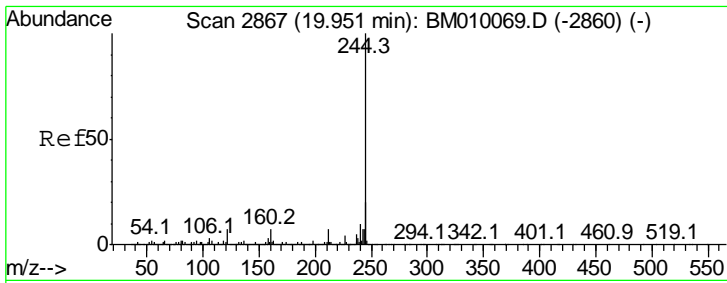
Tgt Ion	Ratio	Lower	Upper
188	100		
94	5.7	8.7	13.1#
80	6.7	9.3	13.9#



#75
 Chrysene-d12
 Concen: 20.00 ng
 RT: 21.49 min Scan# 3129
 Delta R.T. -0.02 min
 Lab File: BM010161.D
 Acq: 24 May 2017 03:11

Tgt Ion	Ratio	Lower	Upper
240	100		
120	4.7	8.2	12.2#
236	25.1	20.0	30.0

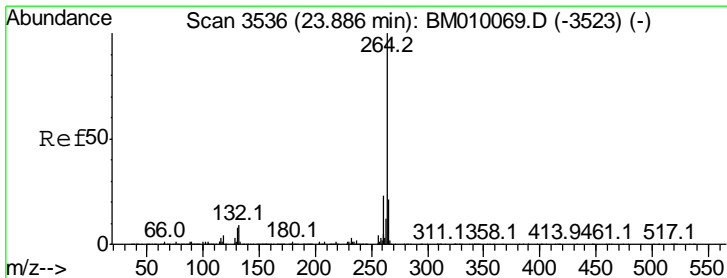
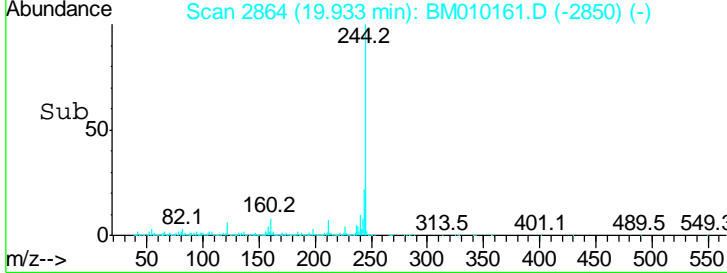
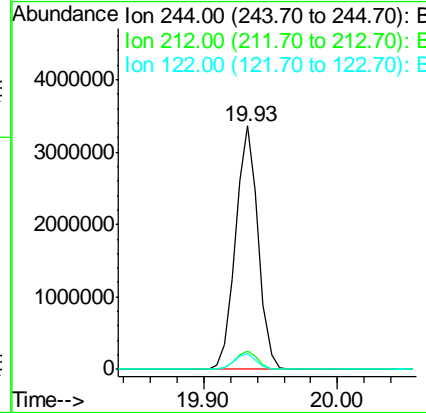
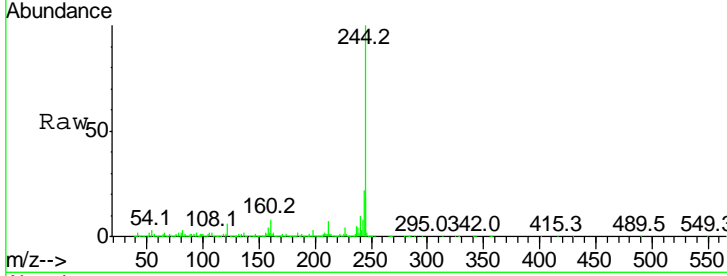




#78
 Terphenyl-d14
 Concen: 89.63 ng
 RT: 19.93 min Scan# 2864
 Delta R.T. -0.02 min
 Lab File: BM010161.D
 Acq: 24 May 2017 03:11

Instrument :
 BNA_M
 ClientSampled :

Tgt Ion	Ratio	Lower	Upper
244	100		
212	7.3	4.9	7.3
122	6.3	6.2	9.4



#86
 Perylene-d12
 Concen: 20.00 ng
 RT: 23.85 min Scan# 3530
 Delta R.T. -0.04 min
 Lab File: BM010161.D
 Acq: 24 May 2017 03:11

Tgt Ion	Ratio	Lower	Upper
264	100		
260	23.6	18.6	27.8
265	22.4	17.3	25.9

