

Data Path : Z:\HPCHEM1\BNA M\DATA\BM052516\  
 Data File : BM005647.D  
 Acq On : 25 May 2016 21:14  
 Operator : UM/SJ  
 Sample : H3086-03  
 Misc :  
 ALS Vial : 6 Sample Multiplier: 1

Instrument :  
 BNA\_M  
 ClientSampled :  
 JHGF4

Manual Integrations  
 APPROVED

sohil  
 5/26/2016 2:23:26 AM

Quant Time: May 26 00:40:54 2016  
 Quant Method : Z:\HPCHEM1\BNA M\METHODS\SOM02.2-EPA-BM052016.M  
 Quant Title : SVOA CALIBRATION  
 QLast Update : Wed May 25 19:26:23 2016  
 Response via : Initial Calibration

Internal Standards	R.T.	QIon	Response	Conc	Units	Dev(Min)
1) 1,4-Dichlorobenzene-d4	7.79	152	104277	20.00	ng/ul	0.00
18) Naphthalene-d8	10.58	136	526245	20.00	ng/ul	0.00
35) Acenaphthene-d10	14.43	164	316221	20.00	ng/ul	0.00
61) Phenanthrene-d10	17.17	188	688051	20.00	ng/ul	0.00
75) Chrysene-d12	21.37	240	503942	20.00	ng/ul	0.02
83) Perylene-d12	23.66	264	454805	20.00	ng/ul	0.04

## System Monitoring Compounds

3) 1,4-Dioxane-d8	3.24	96	7251	3.05	ng/uL	0.00
5) Phenol-d5	6.97	99	217234	25.42	ng/ul	0.01
7) Bis-(2-Chloroethyl)ether-d	7.12	67	119274	24.08	ng/ul	0.00
9) 2-Chlorophenol-d4	7.32	132	176419	24.74	ng/ul	0.00
13) 4-Methylphenol-d8	8.50	113	181062	25.85	ng/ul	0.00
19) Nitrobenzene-d5	8.95	128	91899	22.84	ng/ul	0.00
22) 2-Nitrophenol-d4	9.66	143	105916	23.91	ng/ul	0.00
26) 2,4-Dichlorophenol-d3	10.21	165	194050	23.26	ng/ul	0.00
29) 4-Chloroaniline-d4	10.72	131	169218	20.26	ng/ul	0.00
43) Dimethylphthalate-d6	13.84	166	600452	23.26	ng/ul	0.00
46) Acenaphthylene-d8	14.12	160	774127	23.99	ng/ul	0.00
51) 4-Nitrophenol-d4	14.66	143	87222	17.86	ng/ul	0.01
57) Fluorene-d10	15.42	176	536456	23.88	ng/ul	0.00
62) 4,6-Dinitro-2-methylphenol	15.56	200	62011	15.67	ng/ul	0.00
70) Anthracene-d10	17.27	188	814247	24.84	ng/ul	0.00
76) Pyrene-d10	19.57	212	789160	34.58	ng/ul	0.02
87) Benzo(a)pyrene-d12	23.51	264	526626	24.80	ng/ul	0.04

## Target Compounds

Target Compounds	R.T.	QIon	Response	Conc	Units	Ovalue
16) 4-Methylphenol	8.57	108	8476	1.17	ng/ul	96
44) Dimethylphthalate	13.88	163	107280	4.21	ng/ul	100
47) Acenaphthylene	14.15	152	1189565	36.28	ng/ul	99
49) Acenaphthene	14.49	153	29094	1.35	ng/ul	96
58) Fluorene	15.47	166	56065	2.27	ng/ul	97
69) Phenanthrene	17.22	178	554296	14.41	ng/ul	99
71) Anthracene	17.31	178	587870	15.00	ng/ul	100
72) Carbazole	17.58	167	45596	1.34	ng/ul#	88
74) Fluoranthene	19.24	202	2620155	60.53	ng/ul	98
77) Pyrene	19.61	202	3099864	107.00	ng/ul	99
79) 3,3'-Dichlorobenzidine	21.29	252	31203	3.42	ng/ul#	91
80) Benzo(a)anthracene	21.35	228	1757710	59.34	ng/ul#	90
82) Chrysene	21.40	228	1787513	63.43	ng/ul	95
85) Benzo(b)fluoranthene	22.98	252	2429696	90.57	ng/ul#	96
86) Benzo(k)fluoranthene	23.01	252	877695m	34.56	ng/ul	
88) Benzo(a)pyrene	23.57	252	1890989	72.67	ng/ul	96
89) Indeno(1,2,3-cd)pyrene	25.99	276	1328887	42.99	ng/ul	98
90) Dibenzo(a,h)anthracene	25.99	278	340262	13.22	ng/ul#	87
91) Benzo(g,h,i)perylene	26.71	276	1027694	39.55	ng/ul	97

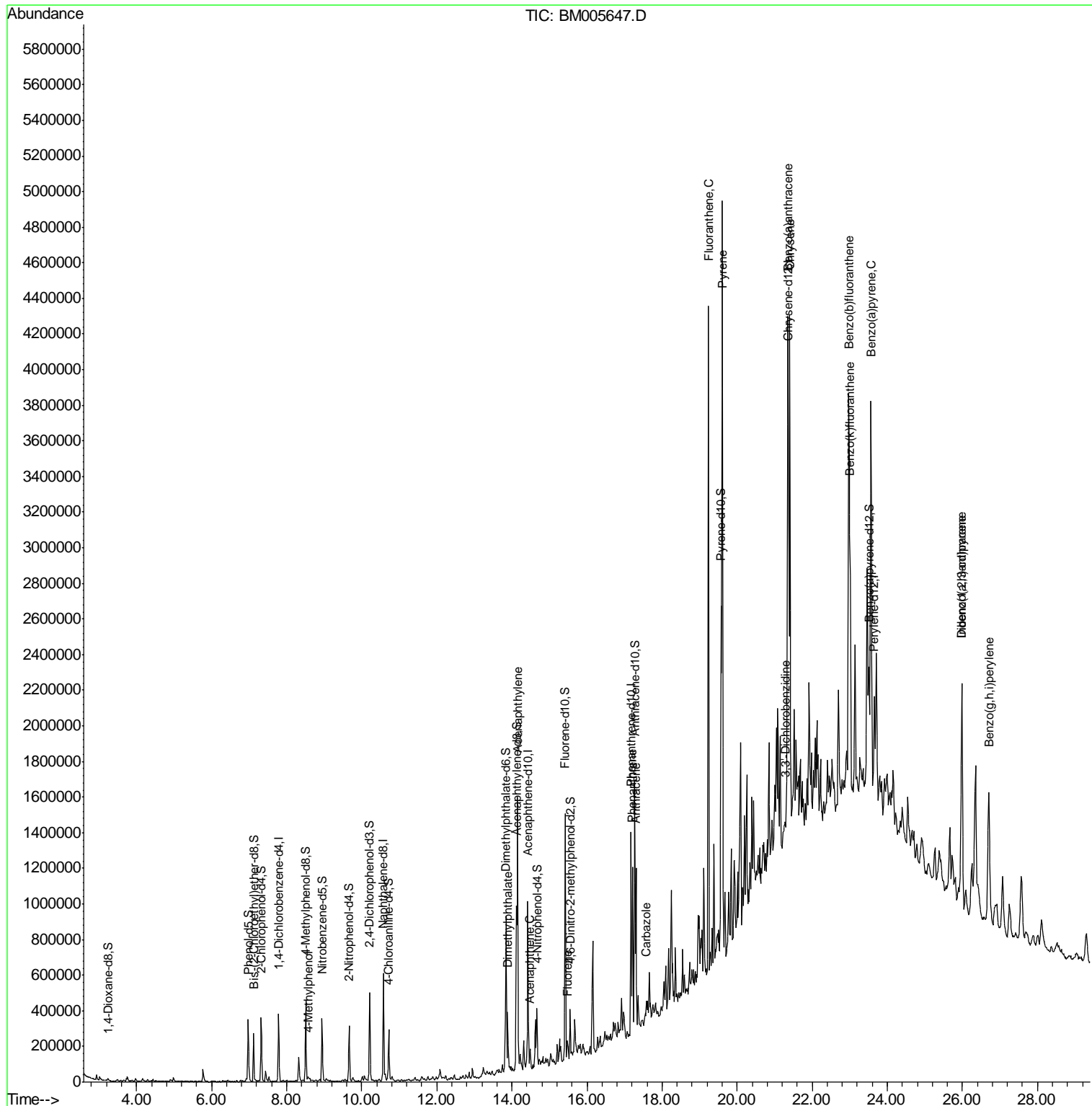
(#) = qualifier out of range (m) = manual integration (+) = signals summed

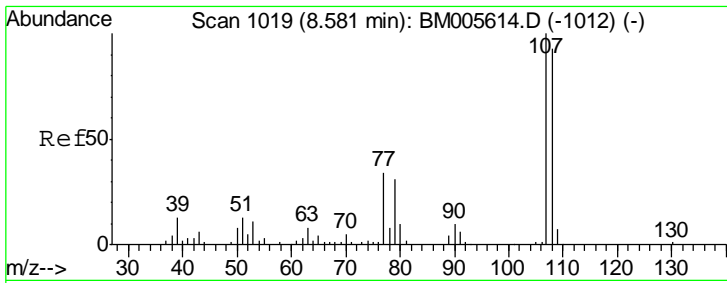
Data Path : Z:\HPCHEM1\BNA M\DATA\BM052516\  
 Data File : BM005647.D  
 Acq On : 25 May 2016 21:14  
 Operator : UM/SJ  
 Sample : H3086-03  
 Misc :  
 ALS Vial : 6 Sample Multiplier: 1

Instrument :  
 BNA\_M  
 Client Sampled :  
 JHGF4

Manual Integrations  
 APPROVED  
 sohil  
 5/26/2016 2:23:26 AM

Quant Time: May 26 00:40:54 2016  
 Quant Method : Z:\HPCHEM1\BNA M\METHODS\SOM02.2-EPA-BM052016.M  
 Quant Title : SVOA CALIBRATION  
 QLast Update : Wed May 25 19:26:23 2016  
 Response via : Initial Calibration



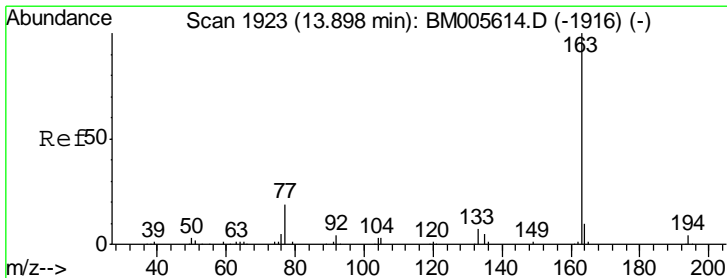
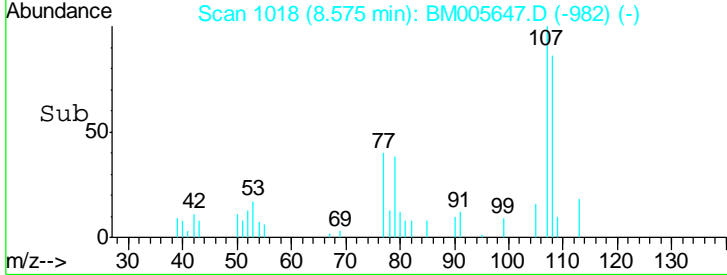
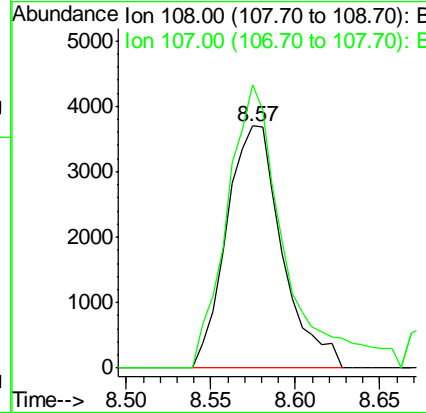
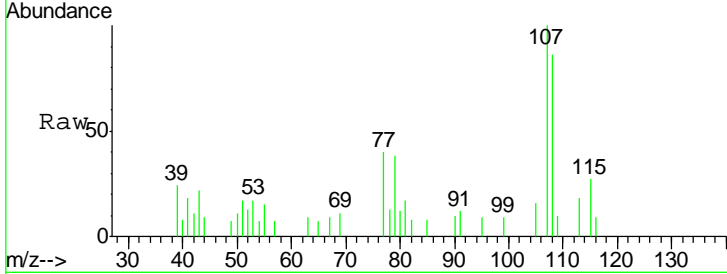


#16  
 4-Methylphenol  
 Concen: 1.17 ng/ul  
 RT: 8.57 min Scan# 1018  
 Delta R.T. 0.01 min  
 Lab File: BM005647.D  
 Acq: 25 May 2016 21:14

Instrument :  
 BNA\_M  
 ClientSampled :  
 JHGF4

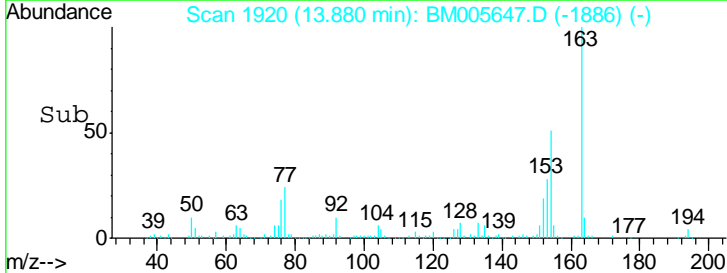
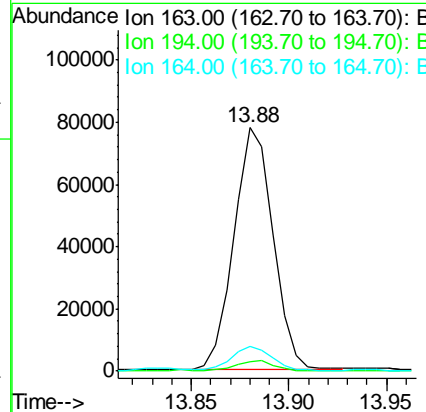
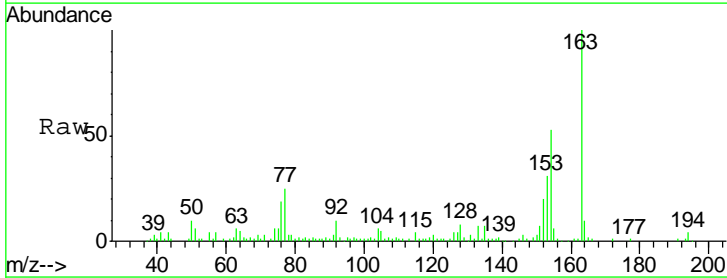
Tgt Ion	Resp	Lower	Upper
108	8476		
108	100		
107	116.9	90.3	135.5

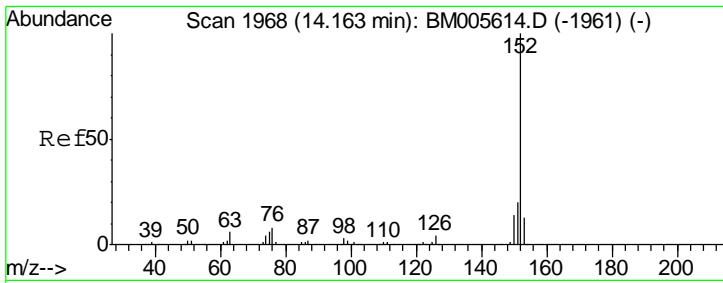
Manual Integrations  
 APPROVED  
 sohil  
 5/26/2016 2:23:26 AM



#44  
 Dimethylphthalate  
 Concen: 4.21 ng/ul  
 RT: 13.88 min Scan# 1920  
 Delta R.T. -0.00 min  
 Lab File: BM005647.D  
 Acq: 25 May 2016 21:14

Tgt Ion	Resp	Lower	Upper
163	107280		
163	100		
194	4.0	3.4	5.0
164	10.1	8.0	12.0





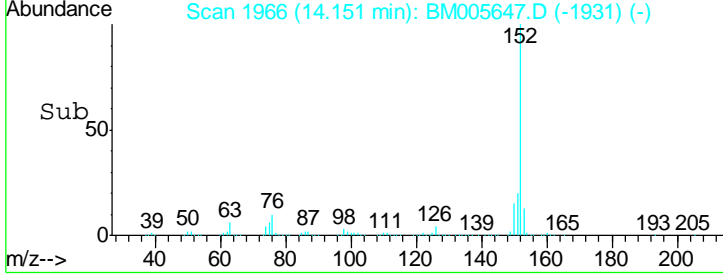
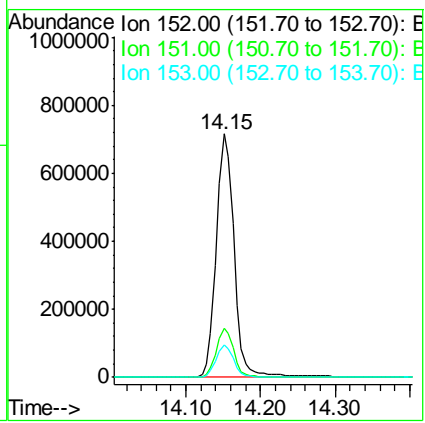
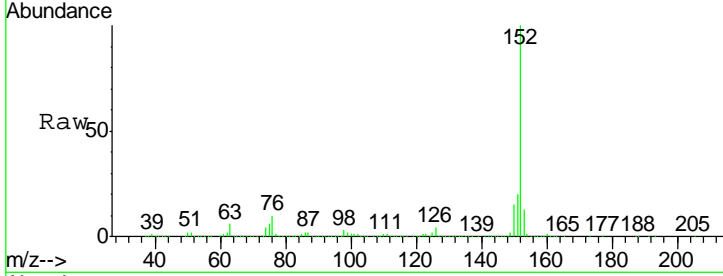
#47  
 Acenaphthylene  
 Concen: 36.28 ng/ul  
 RT: 14.15 min Scan# 1966  
 Delta R.T. 0.01 min  
 Lab File: BM005647.D  
 Acq: 25 May 2016 21:14

Instrument :  
 BNA\_M  
 ClientSampled :  
 JHGF4

Tgt Ion:152 Resp: 1189565

Ion	Ratio	Lower	Upper
152	100		
151	20.0	15.7	23.5
153	13.1	10.5	15.7

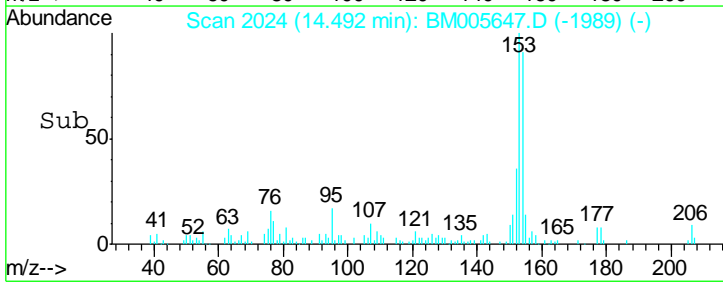
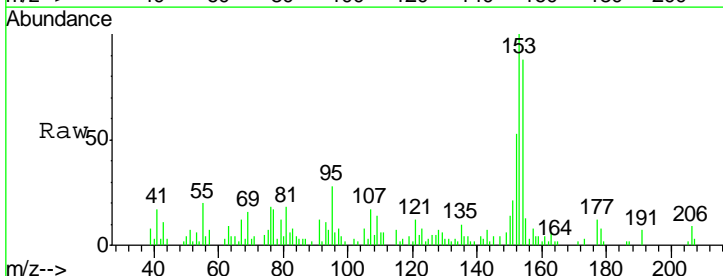
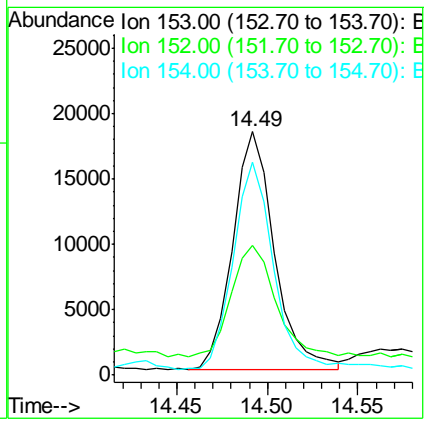
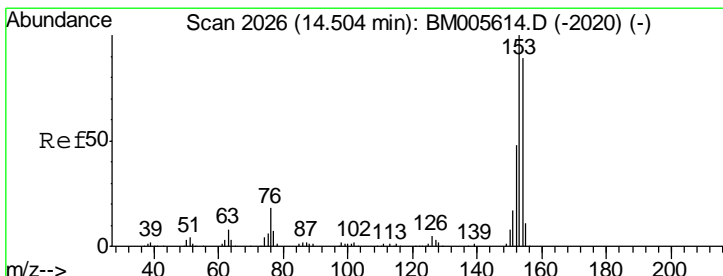
Manual Integrations  
 APPROVED  
 sohil  
 5/26/2016 2:23:26 AM

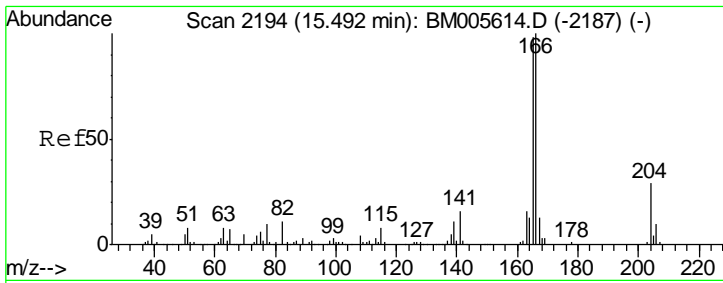


#49  
 Acenaphthene  
 Concen: 1.35 ng/ul  
 RT: 14.49 min Scan# 2024  
 Delta R.T. 0.01 min  
 Lab File: BM005647.D  
 Acq: 25 May 2016 21:14

Tgt Ion:153 Resp: 29094

Ion	Ratio	Lower	Upper
153	100		
152	53.3	37.8	56.6
154	87.7	71.1	106.7



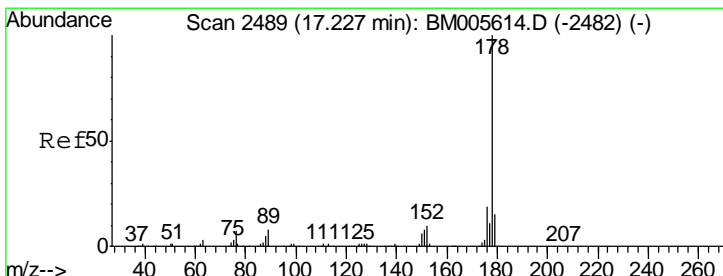
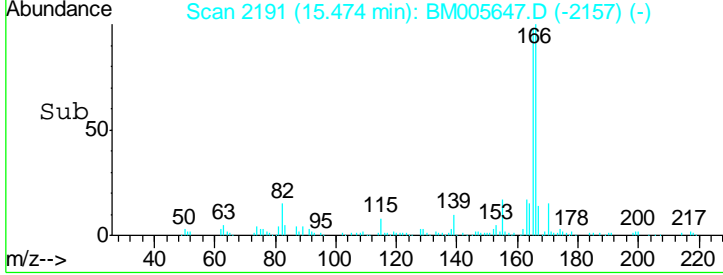
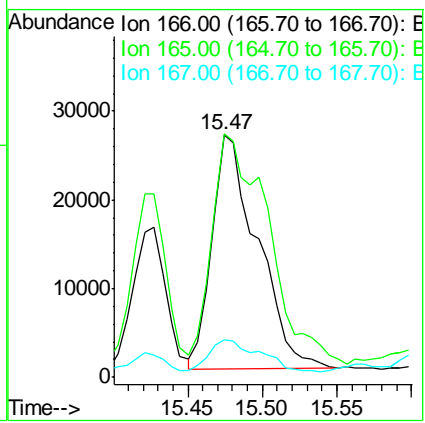
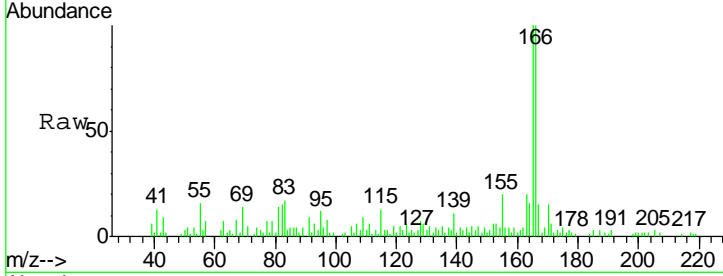


#58  
 Fluorene  
 Concen: 2.27 ng/ul  
 RT: 15.47 min Scan# 2191  
 Delta R.T. -0.00 min  
 Lab File: BM005647.D  
 Acq: 25 May 2016 21:14

Instrument :  
 BNA\_M  
 ClientSampled :  
 JHGF4

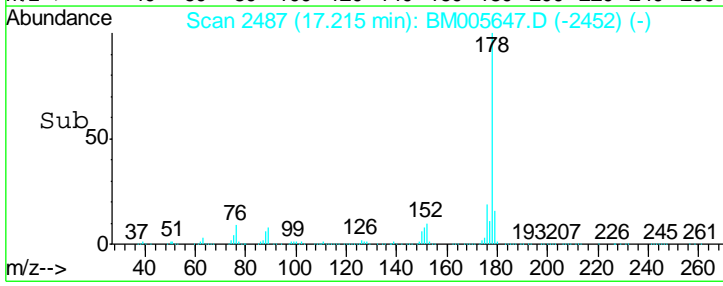
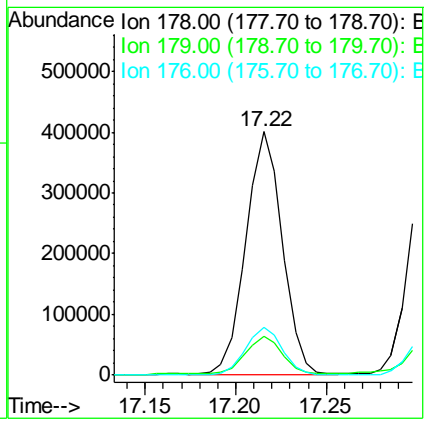
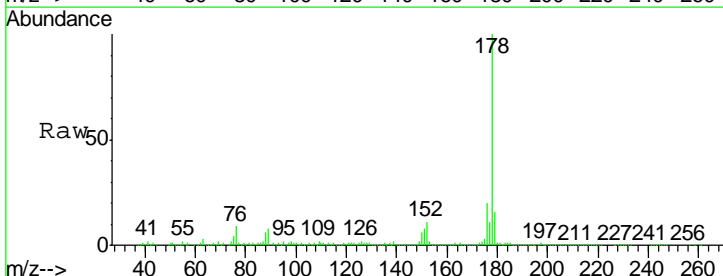
Tgt Ion	Resp	Lower	Upper
166	56065		
165	100.3	78.0	117.0
167	15.3	10.5	15.7

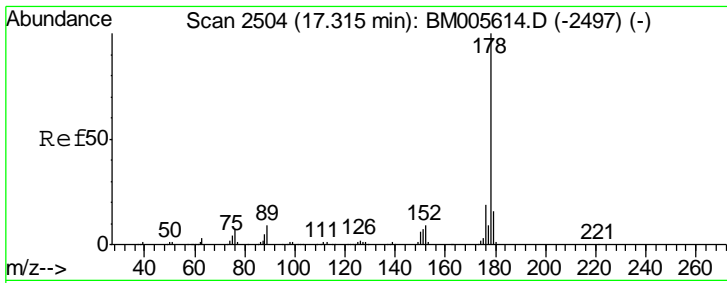
Manual Integrations  
**APPROVED**  
 sohil  
 5/26/2016 2:23:26 AM



#69  
 Phenanthrene  
 Concen: 14.41 ng/ul  
 RT: 17.22 min Scan# 2487  
 Delta R.T. 0.01 min  
 Lab File: BM005647.D  
 Acq: 25 May 2016 21:14

Tgt Ion	Resp	Lower	Upper
178	554296		
179	16.1	12.2	18.2
176	19.5	15.8	23.6



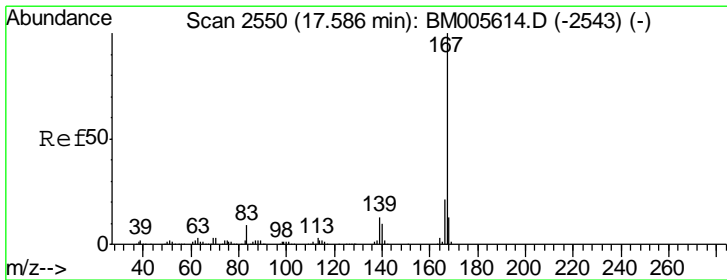
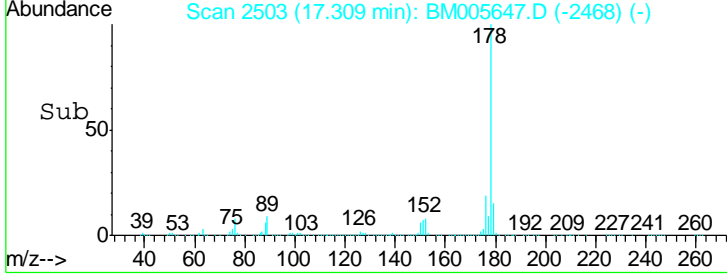
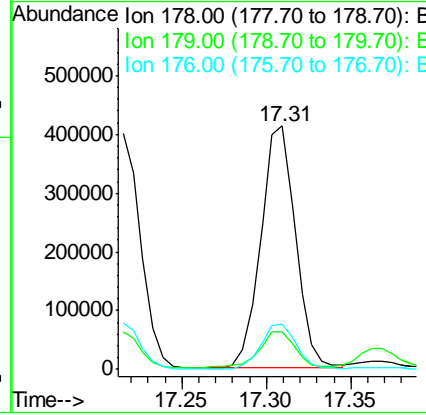
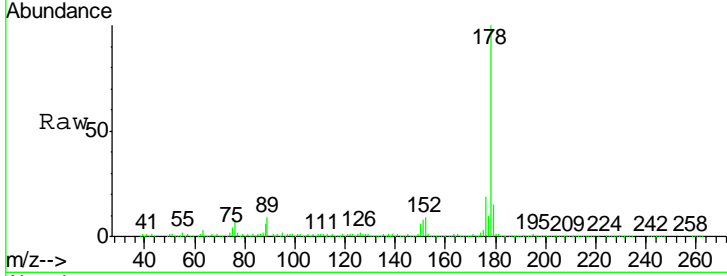


#71  
 Anthracene  
 Concen: 15.00 ng/ul  
 RT: 17.31 min Scan# 2503  
 Delta R.T. 0.01 min  
 Lab File: BM005647.D  
 Acq: 25 May 2016 21:14

Instrument :  
 BNA\_M  
 ClientSampled :  
 JHGF4

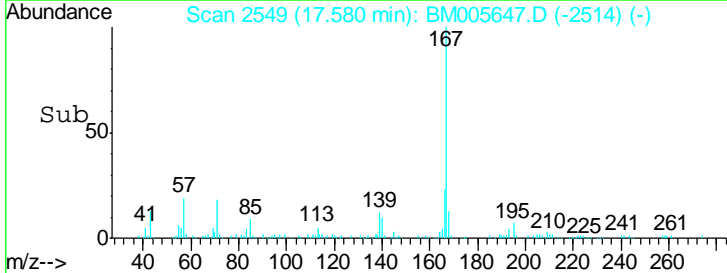
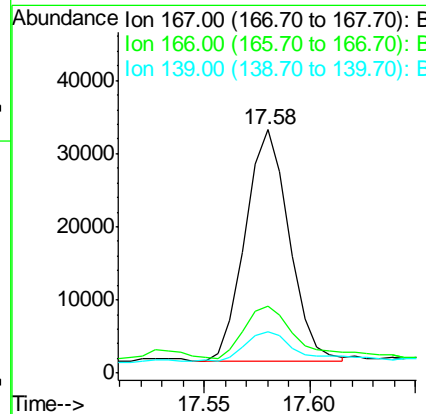
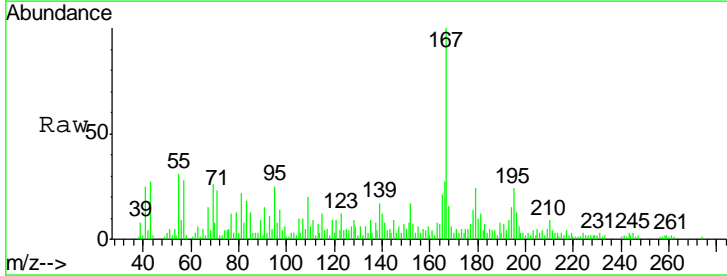
Tgt Ion	Resp	Lower	Upper
178	587870		
179	15.5	12.6	18.8
176	18.8	15.0	22.4

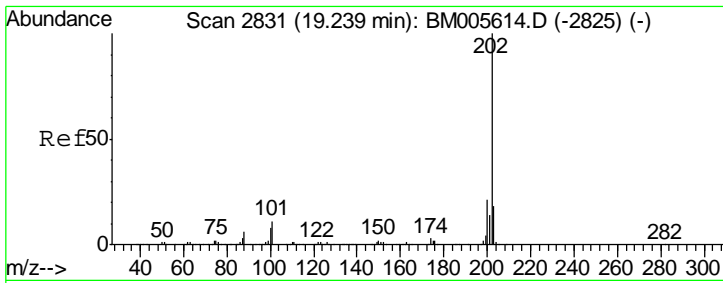
Manual Integrations  
 APPROVED  
 sohil  
 5/26/2016 2:23:26 AM



#72  
 Carbazole  
 Concen: 1.34 ng/ul  
 RT: 17.58 min Scan# 2549  
 Delta R.T. 0.01 min  
 Lab File: BM005647.D  
 Acq: 25 May 2016 21:14

Tgt Ion	Resp	Lower	Upper
167	45596		
166	27.5	16.9	25.3#
139	16.9	10.6	16.0#



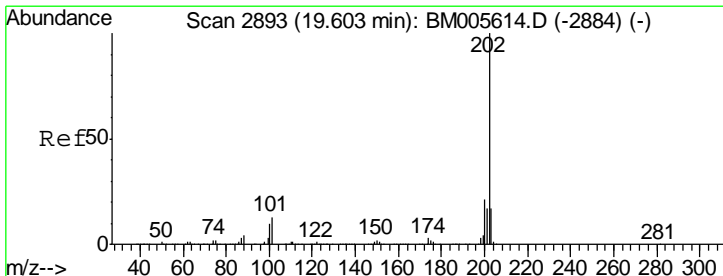
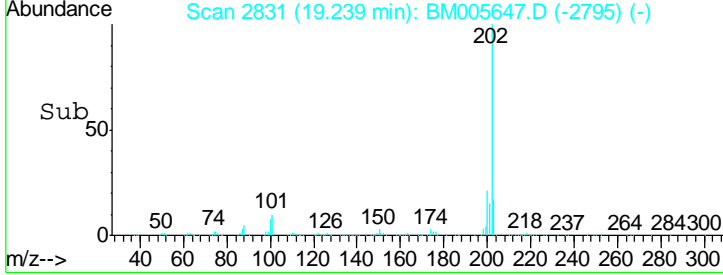
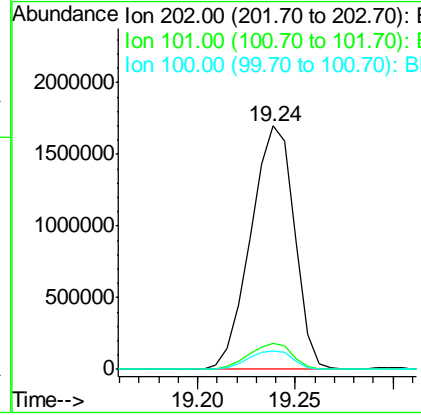
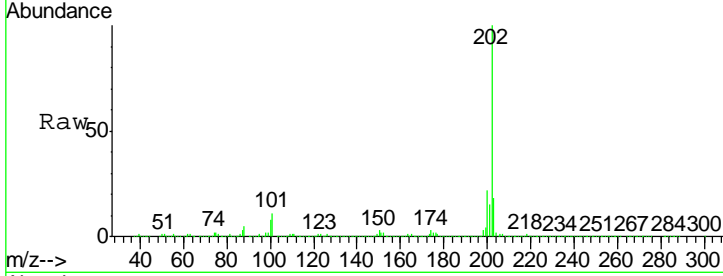


#74  
 Fluoranthene  
 Concen: 60.53 ng/ul  
 RT: 19.24 min Scan# 2831  
 Delta R.T. 0.01 min  
 Lab File: BM005647.D  
 Acq: 25 May 2016 21:14

**Instrument :**  
 BNA\_M  
**ClientSampled :**  
 JHGF4

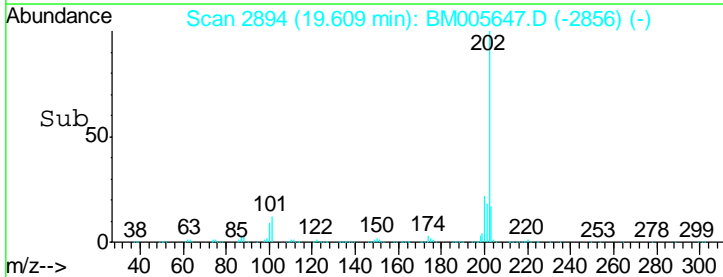
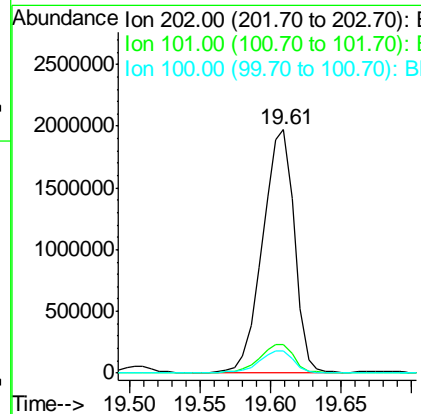
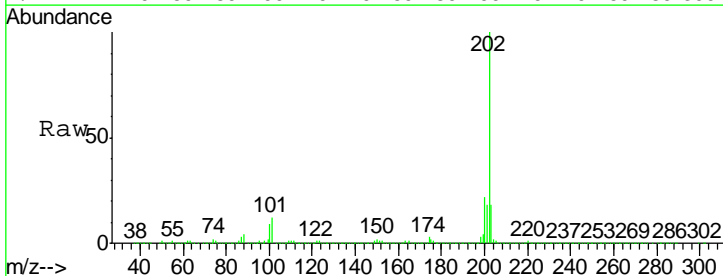
Tgt Ion	Resp	Lower	Upper
202	100		
101	10.5	7.9	11.9
100	7.8	5.6	8.4

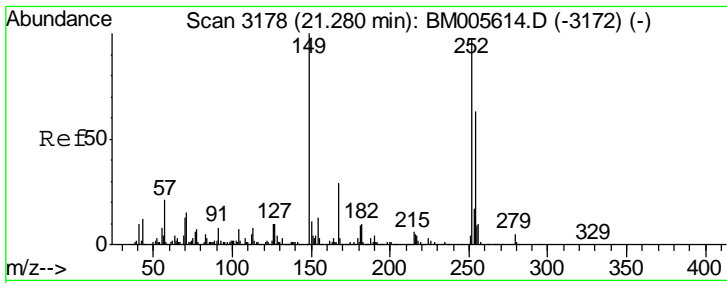
**Manual Integrations**  
**APPROVED**  
 sohil  
 5/26/2016 2:23:26 AM



#77  
 Pyrene  
 Concen: 107.00 ng/ul  
 RT: 19.61 min Scan# 2894  
 Delta R.T. 0.02 min  
 Lab File: BM005647.D  
 Acq: 25 May 2016 21:14

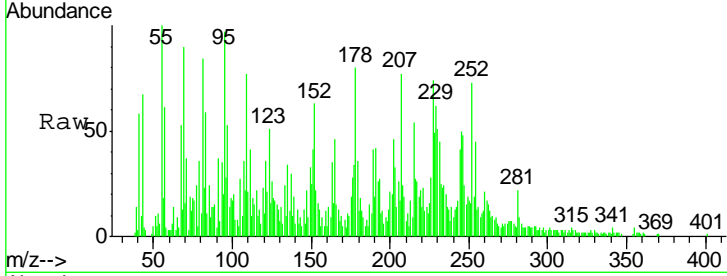
Tgt Ion	Resp	Lower	Upper
202	100		
101	11.6	9.6	14.4
100	9.0	7.8	11.6





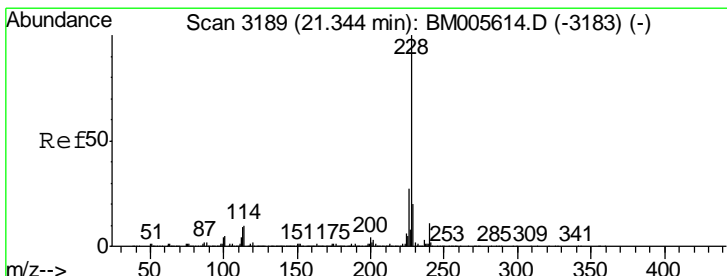
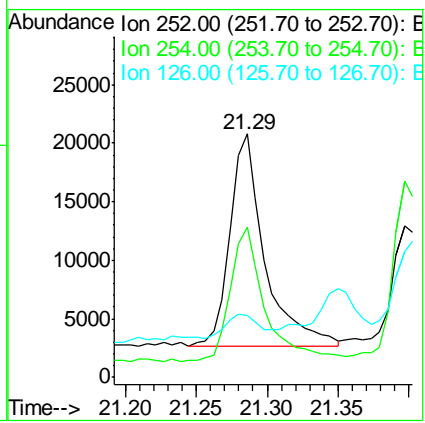
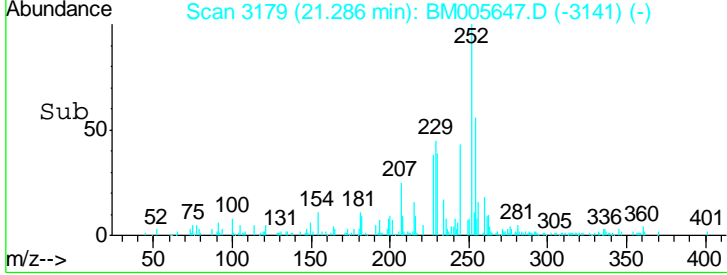
#79  
 3,3'-Dichlorobenzidine  
 Concen: 3.42 ng/ul  
 RT: 21.29 min Scan# 3179  
 Delta R.T. 0.02 min  
 Lab File: BM005647.D  
 Acq: 25 May 2016 21:14

Instrument :  
 BNA\_M  
 ClientSampled :  
 JHGF4

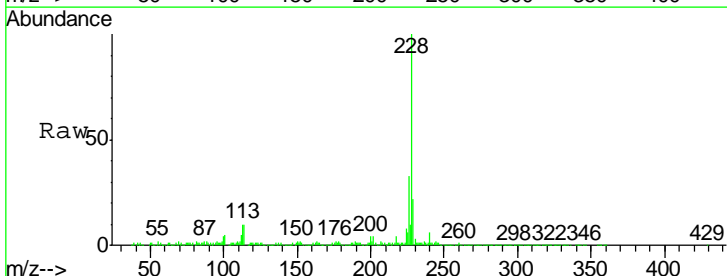


Tgt Ion	Resp	Lower	Upper
252	31203		
254	61.9	51.7	77.5
126	25.4	7.9	11.9#

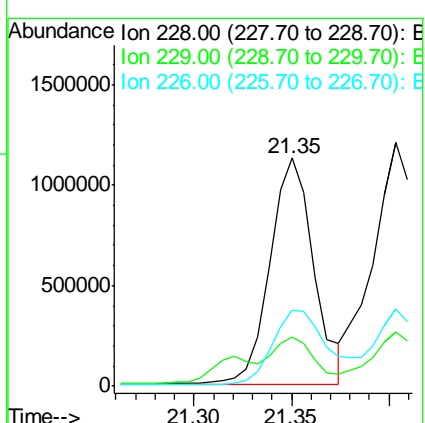
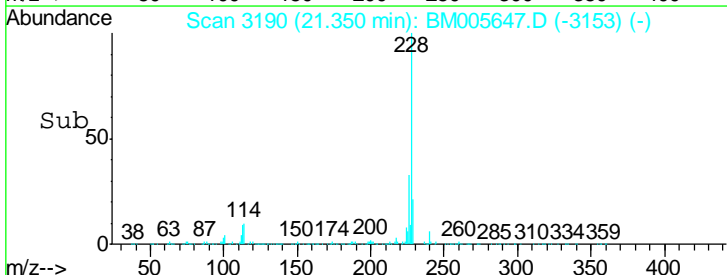
Manual Integrations  
 APPROVED  
 sohil  
 5/26/2016 2:23:26 AM



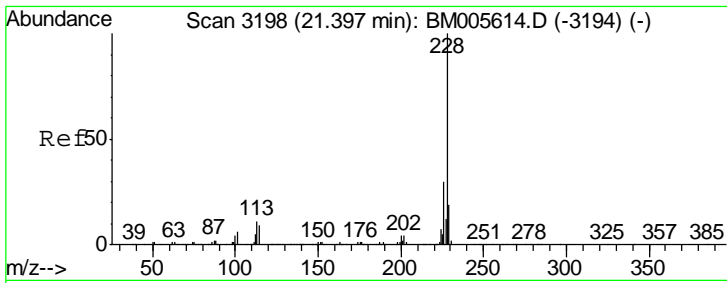
#80  
 Benzo(a)anthracene  
 Concen: 59.34 ng/ul  
 RT: 21.35 min Scan# 3190  
 Delta R.T. 0.02 min  
 Lab File: BM005647.D  
 Acq: 25 May 2016 21:14



Tgt Ion	Resp	Lower	Upper
228	1757710		
229	21.6	15.4	23.2
226	33.1	21.0	31.4#





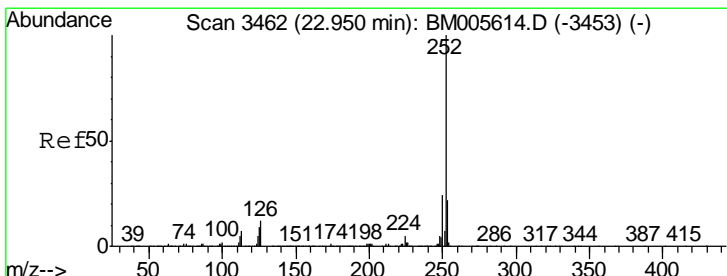
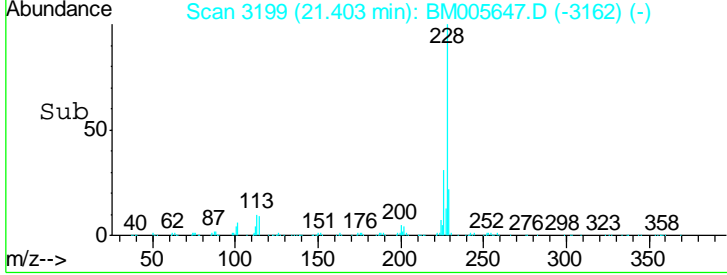
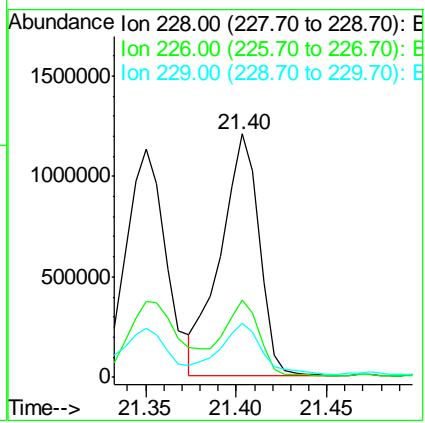
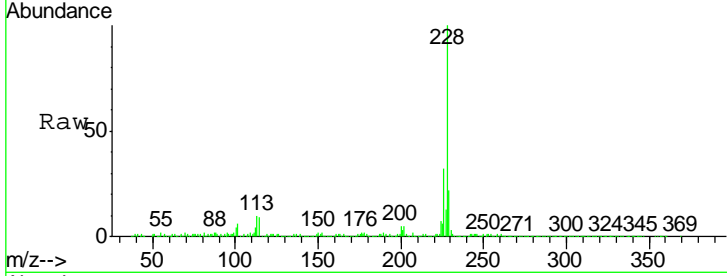


#82  
 Chrysene  
 Concen: 63.43 ng/ul  
 RT: 21.40 min Scan# 3199  
 Delta R.T. 0.02 min  
 Lab File: BM005647.D  
 Acq: 25 May 2016 21:14

Instrument :  
 BNA\_M  
 ClientSampled :  
 JHGF4

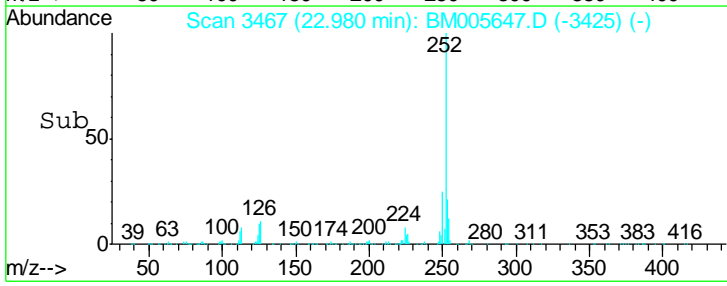
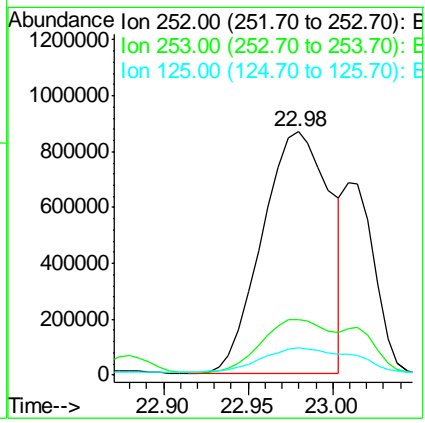
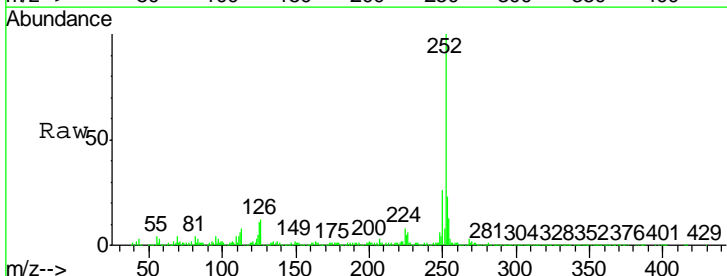
Tgt Ion	Resp	Lower	Upper
228	100		
226	31.6	23.7	35.5
229	22.4	15.5	23.3

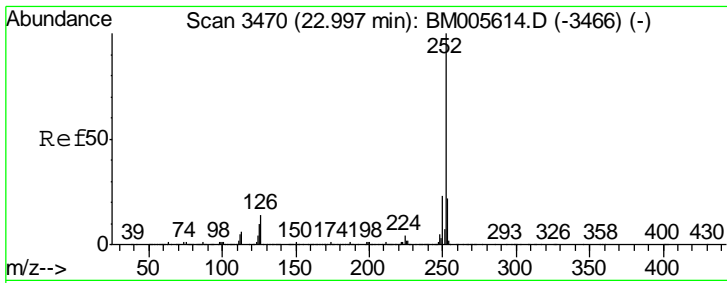
Manual Integrations  
 APPROVED  
 sohil  
 5/26/2016 2:23:26 AM



#85  
 Benzo(b)fluoranthene  
 Concen: 90.57 ng/ul  
 RT: 22.98 min Scan# 3467  
 Delta R.T. 0.05 min  
 Lab File: BM005647.D  
 Acq: 25 May 2016 21:14

Tgt Ion	Resp	Lower	Upper
252	100		
253	23.0	17.3	25.9
125	11.0	7.0	10.4#



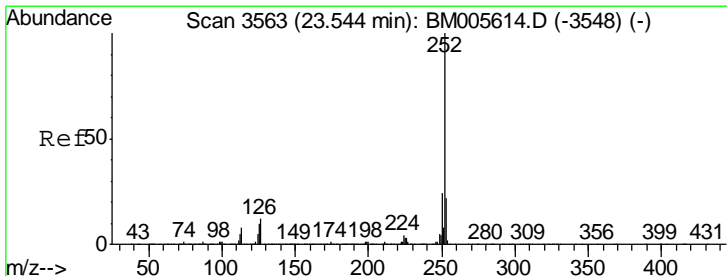
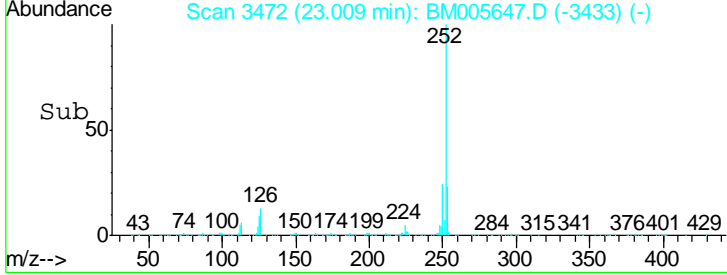
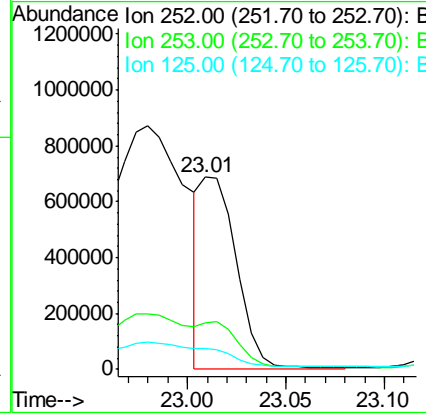
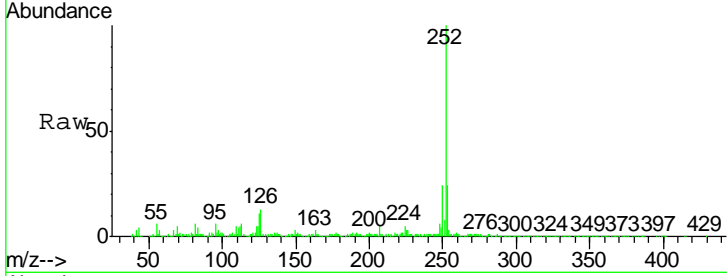


#86  
 Benzo(k)fluoranthene  
 Concen: 34.56 ng/ul m  
 RT: 23.01 min Scan# 3472  
 Delta R.T. 0.03 min  
 Lab File: BM005647.D  
 Acq: 25 May 2016 21:14

Instrument :  
 BNA\_M  
 ClientSampled :  
 JHGF4

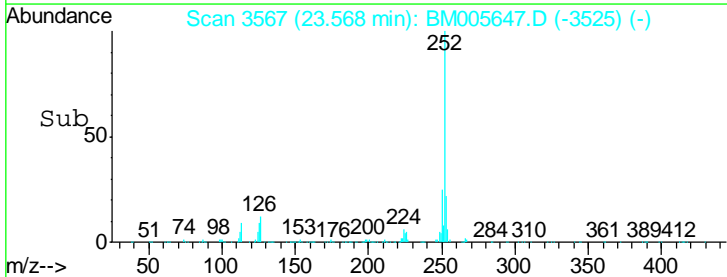
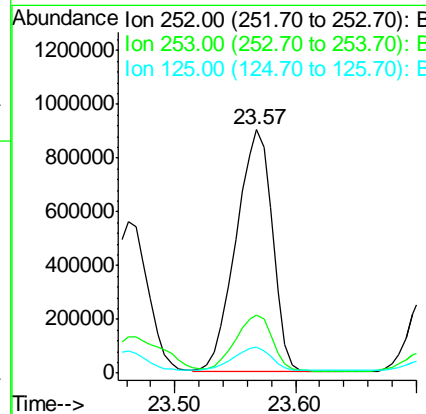
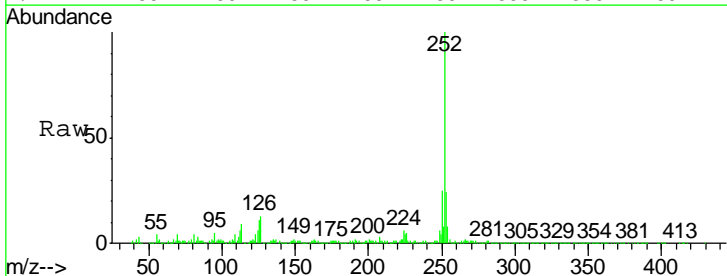
Tgt Ion	Resp	Lower	Upper
252	100		
253	24.0	17.5	26.3
125	10.6	7.0	10.6

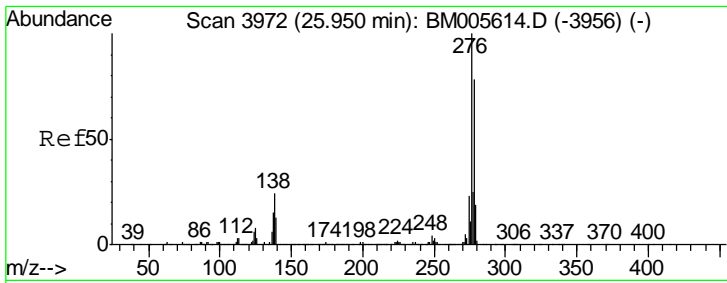
Manual Integrations  
 APPROVED  
 sohil  
 5/26/2016 2:23:26 AM



#88  
 Benzo(a)pyrene  
 Concen: 72.67 ng/ul  
 RT: 23.57 min Scan# 3567  
 Delta R.T. 0.05 min  
 Lab File: BM005647.D  
 Acq: 25 May 2016 21:14

Tgt Ion	Resp	Lower	Upper
252	100		
253	23.8	17.6	26.4
125	10.6	7.6	11.4



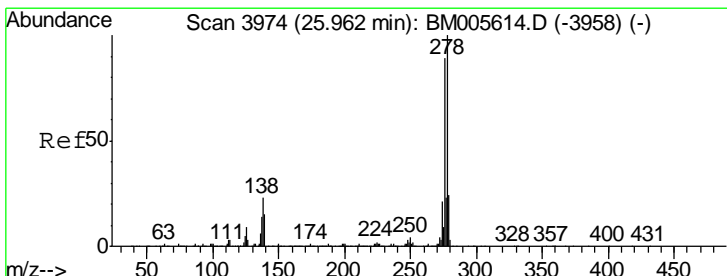
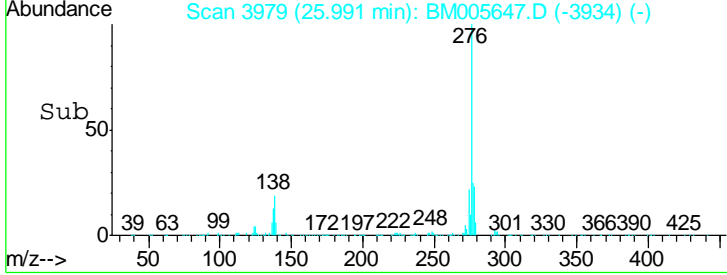
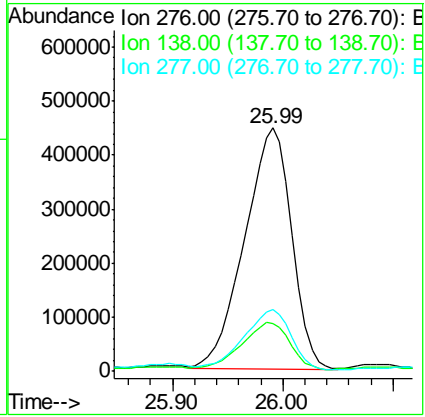
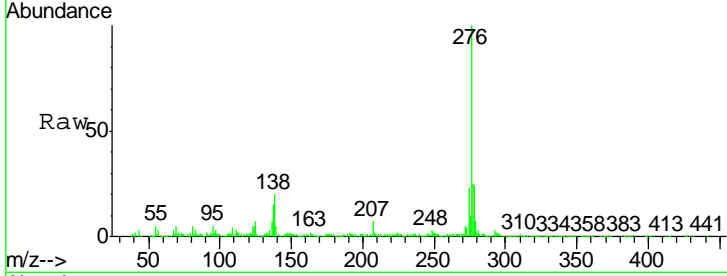


#89  
 Indeno(1,2,3-cd)pyrene  
 Concen: 42.99 ng/ul  
 RT: 25.99 min Scan# 3979  
 Delta R.T. 0.06 min  
 Lab File: BM005647.D  
 Acq: 25 May 2016 21:14

Instrument :  
 BNA\_M  
 ClientSampled :  
 JHGF4

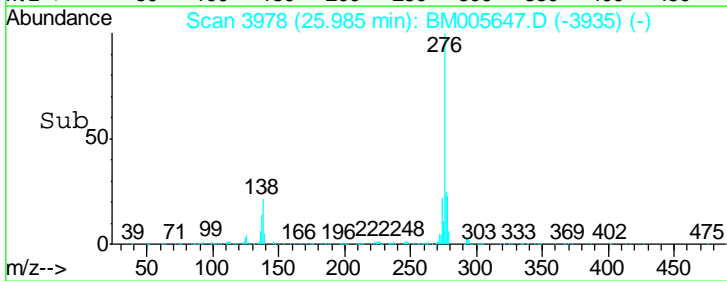
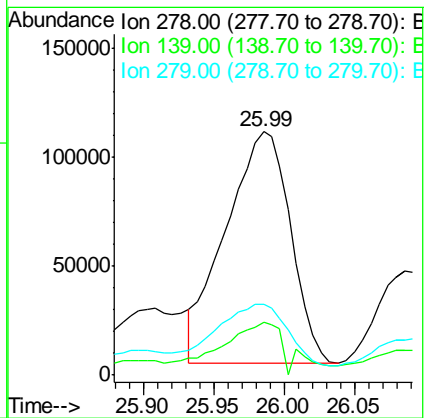
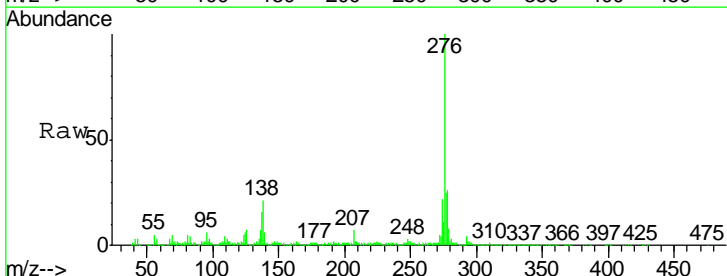
Tgt Ion	Resp	Lower	Upper
276	1328887		
276	100		
138	19.6	16.9	25.3
277	25.1	20.2	30.4

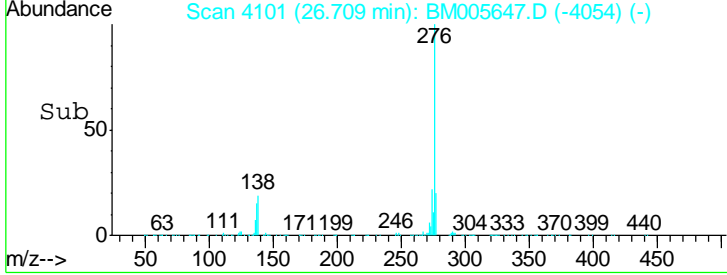
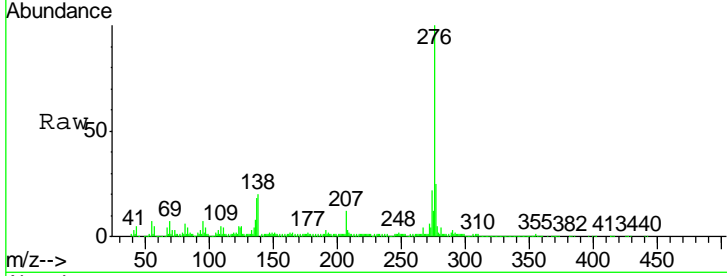
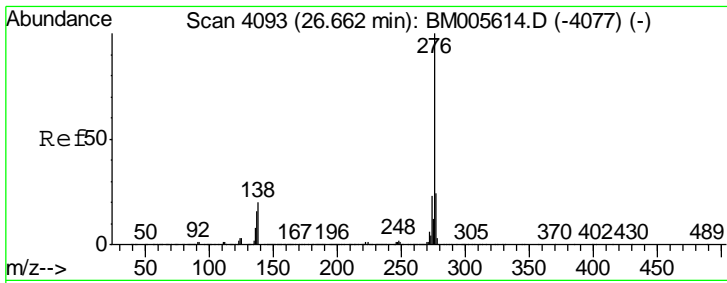
Manual Integrations  
 APPROVED  
 sohil  
 5/26/2016 2:23:26 AM



#90  
 Dibenzo(a,h)anthracene  
 Concen: 13.22 ng/ul  
 RT: 25.99 min Scan# 3978  
 Delta R.T. 0.05 min  
 Lab File: BM005647.D  
 Acq: 25 May 2016 21:14

Tgt Ion	Resp	Lower	Upper
278	340262		
278	100		
139	21.8	11.8	17.6#
279	29.1	19.4	29.2





#91  
 Benzo(a,h,i)perylene  
 Concen: 39.55 ng/ul  
 RT: 26.71 min Scan# 4101  
 Delta R.T. 0.08 min  
 Lab File: BM005647.D  
 Acq: 25 May 2016 21:14

Instrument :  
 BNA\_M  
 ClientSampled :  
 JHGF4

Tot Ion: 276 Resp: 1027694

Ion	Ratio	Lower	Upper
276	100		
138	20.2	15.0	22.6
277	24.5	18.6	28.0

Manual Integrations  
 APPROVED  
 sohil  
 5/26/2016 2:23:26 AM

