

Data Path : Z:\HPCHEM1\BNA M\DATA\BM052516\
 Data File : BM005648.D
 Acq On : 25 May 2016 21:51
 Operator : UM/SJ
 Sample : H3086-18
 Misc :
 ALS Vial : 7 Sample Multiplier: 1

Instrument :
 BNA_M
 ClientSampleId :
 JHGL2

Integration Parameters: LSCINT.P

Integrator: RTE
 Smoothing : OFF
 Sampling : 1
 Start Thrs: 0.2
 Stop Thrs : 0

Filtering: 5
 Min Area: 1 % of largest Peak
 Max Peaks: 100
 Peak Location: TOP

If leading or trailing edge < 100 prefer < Baseline drop else tangent >
 Peak separation: 5

Method : Z:\HPCHEM1\BNA M\METHODS\SOM02.2-EPA-BM052016.M
 Title : SVOA CALIBRATION

Signal : TIC

peak #	R.T. min	first scan	max scan	last scan	PK TY	peak height	corr. area	corr. % max.	% of total
1	6.975	741	746	756	rVB	308726	518451	5.30%	0.436%
2	7.116	764	770	775	rBV	243744	393439	4.02%	0.331%
3	7.328	800	806	811	rBV	294608	487497	4.98%	0.410%
4	7.786	874	884	890	rVB	409573	746683	7.63%	0.628%
5	8.328	966	976	986	rVB3	71765	205063	2.10%	0.172%
6	8.510	999	1007	1015	rBV	436940	789513	8.07%	0.664%
7	8.880	1058	1070	1075	rBV6	57319	175525	1.79%	0.148%
8	8.945	1075	1081	1090	rVV	331360	608771	6.22%	0.512%
9	9.492	1165	1174	1182	rVB3	99235	237701	2.43%	0.200%
10	9.663	1197	1203	1213	rVB	284867	538557	5.51%	0.453%
11	10.210	1290	1296	1303	rVV	452860	785621	8.03%	0.661%
12	10.580	1347	1359	1363	rVV	718333	1381403	14.12%	1.162%
13	10.627	1363	1367	1374	rVB	408177	722582	7.39%	0.608%
14	10.722	1374	1383	1392	rBV3	403817	849335	8.68%	0.714%
15	11.592	1527	1531	1535	rBV	110313	191624	1.96%	0.161%
16	12.245	1637	1642	1647	rVB	213133	372230	3.81%	0.313%
17	12.463	1671	1679	1688	rVB	248537	489504	5.00%	0.412%
18	12.951	1751	1762	1768	rBV	160698	334396	3.42%	0.281%
19	13.257	1804	1814	1819	rVB2	171654	394434	4.03%	0.332%
20	13.351	1819	1830	1836	rBV4	87615	268986	2.75%	0.226%
21	13.480	1845	1852	1857	rVB2	111735	201827	2.06%	0.170%
22	13.604	1866	1873	1880	rBV3	131867	331141	3.39%	0.278%
23	13.751	1892	1898	1903	rBV	237978	427560	4.37%	0.360%
24	13.804	1903	1907	1908	rVV	138625	183581	1.88%	0.154%
25	13.839	1908	1913	1917	rVV	842577	1305872	13.35%	1.098%
26	13.880	1917	1920	1928	rVB2	417922	720347	7.36%	0.606%
27	13.986	1933	1938	1941	rVV	210353	331467	3.39%	0.279%
28	14.121	1956	1961	1964	rBV	1029616	1698760	17.37%	1.429%
29	14.151	1964	1966	1974	rVB	1023487	1318949	13.48%	1.109%
30	14.427	2003	2013	2019	rBV2	1062764	1923924	19.67%	1.618%
31	14.492	2019	2024	2031	rVV2	337013	651924	6.66%	0.548%
32	14.657	2045	2052	2058	rBV3	384137	708700	7.24%	0.596%
33	14.827	2076	2081	2087	rVB	433274	683225	6.98%	0.575%
34	14.904	2090	2094	2098	rVB	222626	307370	3.14%	0.258%

Data Path : Z:\HPCHEM1\BNA M\DATA\BM052516\
 Data File : BM005648.D
 Acq On : 25 May 2016 21:51
 Operator : UM/SJ
 Sample : H3086-18
 Misc :
 ALS Vial : 7 Sample Multiplier: 1

Instrument :
 BNA_M
 ClientSampleId :
 JHGL2

Integration Parameters: LSCINT.P

Integrator: RTE
 Smoothing : OFF
 Sampling : 1
 Start Thrs: 0.2
 Stop Thrs : 0

Filtering: 5
 Min Area: 1 % of largest Peak
 Max Peaks: 100
 Peak Location: TOP

If leading or trailing edge < 100 prefer < Baseline drop else tangent >
 Peak separation: 5

Method : Z:\HPCHEM1\BNA M\METHODS\SOM02.2-EPA-BM052016.M
 Title : SVOA CALIBRATION

35	15.051	2112	2119	2123	rBV2	289317	542786	5.55%	0.456%
36	15.204	2139	2145	2150	rBV4	236313	573277	5.86%	0.482%
37	15.251	2150	2153	2159	rVV2	188840	391677	4.00%	0.329%
38	15.298	2159	2161	2167	rVB	141757	219213	2.24%	0.184%
39	15.421	2178	2182	2187	rVB	1245464	1750308	17.89%	1.472%
40	15.480	2187	2192	2202	rVB2	973793	1670906	17.08%	1.405%
41	15.562	2202	2206	2209	rBV3	249001	390776	3.99%	0.329%
42	15.604	2210	2213	2216	rVV	197136	258163	2.64%	0.217%
43	15.639	2216	2219	2223	rVB4	166206	212963	2.18%	0.179%
44	15.686	2223	2227	2231	rBV2	163004	232577	2.38%	0.196%
45	15.768	2237	2241	2248	rVB2	289751	504119	5.15%	0.424%
46	15.892	2258	2262	2264	rBV	140177	218049	2.23%	0.183%
47	15.921	2264	2267	2274	rVB2	275354	498154	5.09%	0.419%
48	16.157	2300	2307	2312	rVB2	378836	738877	7.55%	0.621%
49	16.286	2325	2329	2333	rBV2	138776	202286	2.07%	0.170%
50	16.480	2355	2362	2367	rBV2	430962	909670	9.30%	0.765%
51	16.533	2367	2371	2376	rVB2	294245	423755	4.33%	0.356%
52	16.627	2384	2387	2392	rVB	259452	378034	3.86%	0.318%
53	16.833	2419	2422	2428	rVB4	184530	284788	2.91%	0.239%
54	16.909	2431	2435	2440	rVV3	181716	414933	4.24%	0.349%
55	16.992	2444	2449	2458	rVB	515997	949802	9.71%	0.799%
56	17.180	2475	2481	2484	rBV	1158425	1975238	20.19%	1.661%
57	17.227	2484	2489	2493	rVV	4765575	7774780	79.48%	6.538%
58	17.280	2493	2498	2500	rVV	1332644	1975737	20.20%	1.661%
59	17.309	2500	2503	2508	rVV	1478761	2023060	20.68%	1.701%
60	17.368	2508	2513	2518	rVV2	207488	423020	4.32%	0.356%
61	17.580	2546	2549	2553	rBV	213277	324264	3.31%	0.273%
62	17.692	2565	2568	2572	rVB	424562	507337	5.19%	0.427%
63	17.756	2576	2579	2587	rVB2	210755	382927	3.91%	0.322%
64	18.050	2624	2629	2634	rBV	1367769	2142933	21.91%	1.802%
65	18.103	2634	2638	2642	rVB	1048604	1489643	15.23%	1.253%
66	18.186	2647	2652	2656	rVV	482400	770932	7.88%	0.648%
67	18.250	2657	2663	2667	rVV2	2063538	3980270	40.69%	3.347%
68	18.286	2667	2669	2676	rVB	1014611	1157161	11.83%	0.973%
69	18.356	2678	2681	2685	rVB3	159516	198858	2.03%	0.167%
70	18.550	2710	2714	2719	rVB	1178637	1518488	15.52%	1.277%
71	18.603	2720	2723	2727	rVB2	191620	241786	2.47%	0.203%

Data Path : Z:\HPCHEM1\BNA M\DATA\BM052516\
 Data File : BM005648.D
 Acq On : 25 May 2016 21:51
 Operator : UM/SJ
 Sample : H3086-18
 Misc :
 ALS Vial : 7 Sample Multiplier: 1

Instrument :
 BNA_M
 ClientSampleId :
 JHGL2

Integration Parameters: LSCINT.P

Integrator: RTE
 Smoothing : OFF
 Sampling : 1
 Start Thrs: 0.2
 Stop Thrs : 0

Filtering: 5
 Min Area: 1 % of largest Peak
 Max Peaks: 100
 Peak Location: TOP

If leading or trailing edge < 100 prefer < Baseline drop else tangent >
 Peak separation: 5

Method : Z:\HPCHEM1\BNA M\METHODS\SOM02.2-EPA-BM052016.M
 Title : SVOA CALIBRATION

72	18.797	2753	2756	2760	rVB2	257140	312363	3.19%	0.263%
73	18.850	2762	2765	2768	rVV	254157	287204	2.94%	0.242%
74	18.886	2769	2771	2775	rVB	155082	172874	1.77%	0.145%
75	18.974	2781	2786	2791	rBV	620762	1204856	12.32%	1.013%
76	19.068	2799	2802	2805	rVB	415574	502670	5.14%	0.423%
77	19.121	2806	2811	2812	rBV2	253363	399752	4.09%	0.336%
78	19.250	2825	2833	2837	rBV	5196826	9220200	94.26%	7.753%
79	19.339	2845	2848	2852	rVB	222552	264948	2.71%	0.223%
80	19.392	2852	2857	2861	rBV	1060196	1440635	14.73%	1.211%
81	19.580	2883	2889	2890	rBV2	2084717	3056852	31.25%	2.571%
82	19.615	2890	2895	2901	rVV	5618247	9781986	100.00%	8.226%
83	19.674	2901	2905	2911	rVB3	396707	678995	6.94%	0.571%
84	19.933	2943	2949	2954	rBV2	493012	1095015	11.19%	0.921%
85	20.097	2967	2977	2982	rVB	1438113	3081044	31.50%	2.591%
86	20.197	2990	2994	2998	rBV	1106935	1393585	14.25%	1.172%
87	20.256	3000	3004	3008	rVB	692453	926546	9.47%	0.779%
88	20.392	3024	3027	3031	rBV	570805	724361	7.41%	0.609%
89	20.439	3032	3035	3043	rVB	655369	947000	9.68%	0.796%
90	21.044	3135	3138	3142	rVB	584747	697199	7.13%	0.586%
91	21.086	3142	3145	3149	rVB2	479010	587527	6.01%	0.494%
92	21.350	3185	3190	3195	rBV3	2819983	5853413	59.84%	4.922%
93	21.403	3195	3199	3208	rVB	2720898	3818406	39.04%	3.211%
94	21.515	3215	3218	3223	rVB	350554	428054	4.38%	0.360%
95	21.568	3224	3227	3231	rBV2	302049	393267	4.02%	0.331%
96	22.962	3459	3464	3482	rVB	1294234	4519618	46.20%	3.801%
97	23.450	3542	3547	3551	rBV	773795	1525347	15.59%	1.283%
98	23.503	3552	3556	3559	rVV	811944	1550590	15.85%	1.304%
99	23.550	3560	3564	3574	rVB	1594630	3120221	31.90%	2.624%
100	23.644	3576	3580	3585	rBV	555533	996003	10.18%	0.838%

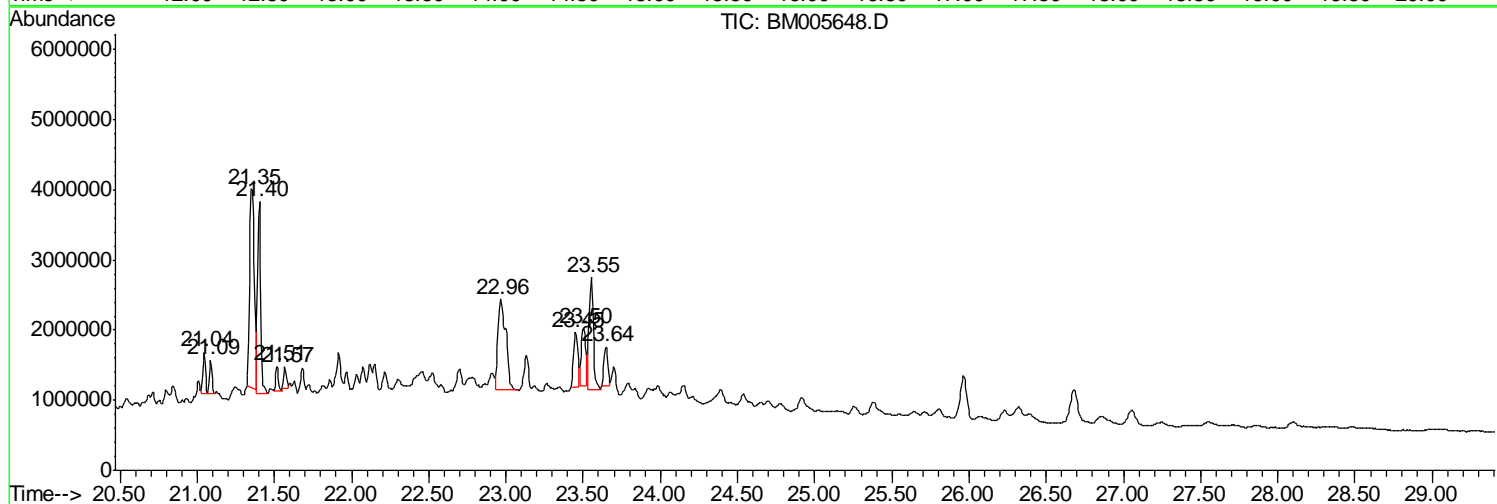
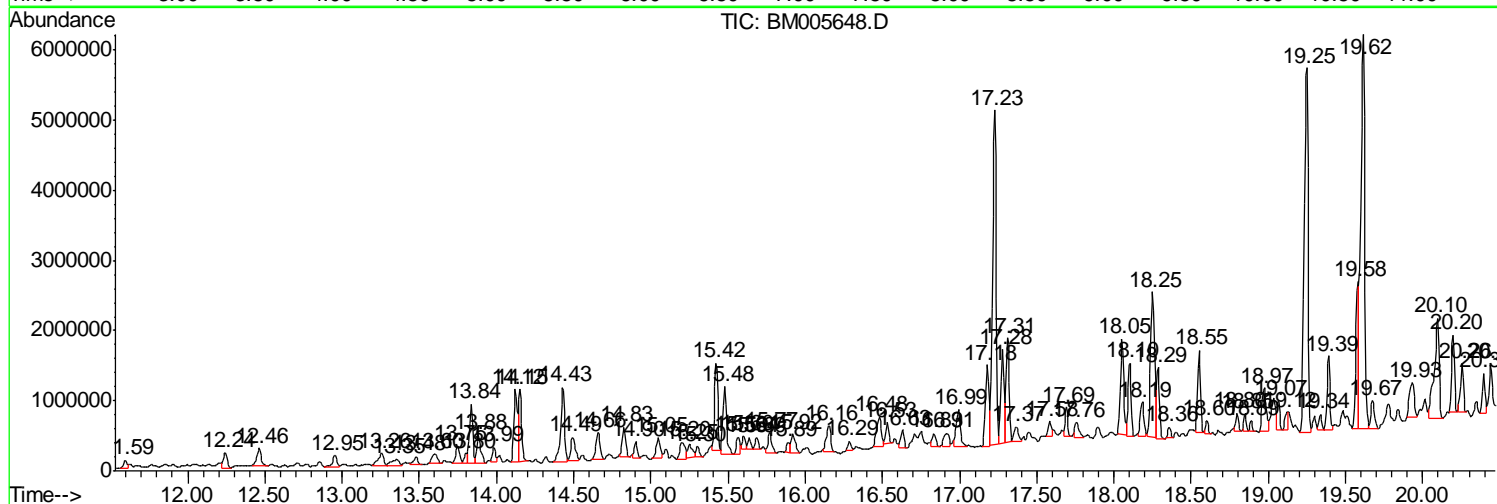
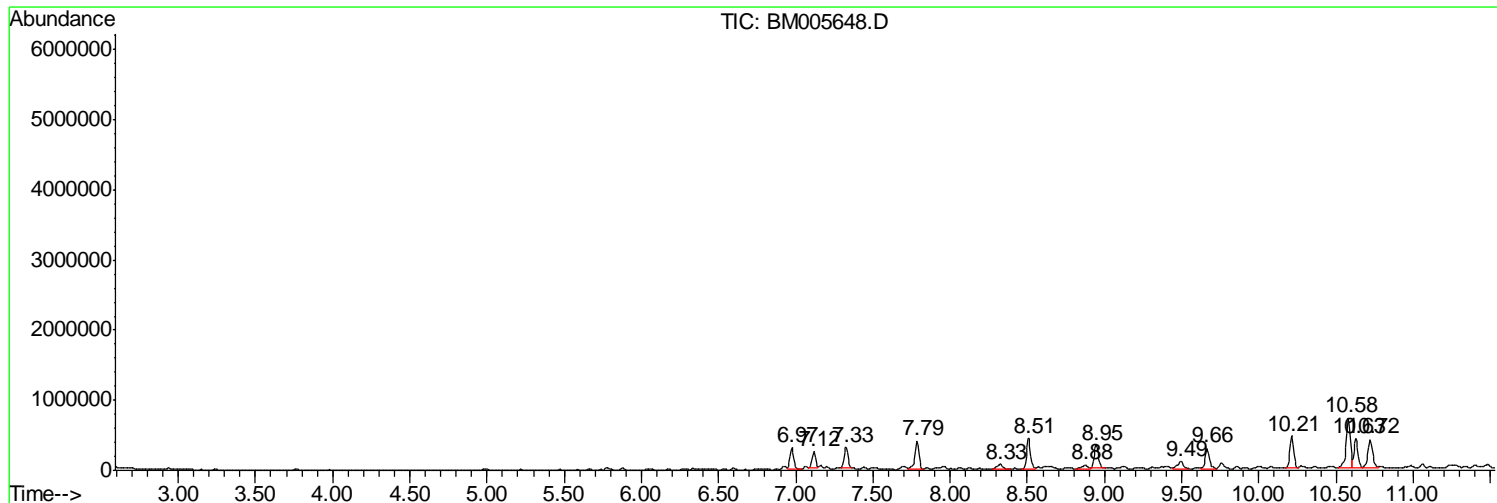
Sum of corrected areas: 118918040

Data Path : Z:\HPCHEM1\BNA M\DATA\BM052516\
 Data File : BM005648.D
 Acq On : 25 May 2016 21:51
 Operator : UM/SJ
 Sample : H3086-18
 Misc :
 ALS Vial : 7 Sample Multiplier: 1

Instrument :
 BNA_M
 ClientSampled :
 JHGL2

Quant Method : Z:\HPCHEM1\BNA M\METHODS\SOM02.2-EPA-BM052016.M
 Quant Title : SVOA CALIBRATION

TIC Library : C:\DATABASE\NIST11.L
 TIC Integration Parameters: LSCINT.P



Data Path : Z:\HPCHEM1\BNA M\DATA\BM052516\
 Data File : BM005648.D
 Acq On : 25 May 2016 21:51
 Operator : UM/SJ
 Sample : H3086-18
 Misc :
 ALS Vial : 7 Sample Multiplier: 1

Instrument :
 BNA_M
 ClientSampled :
 JHGL2

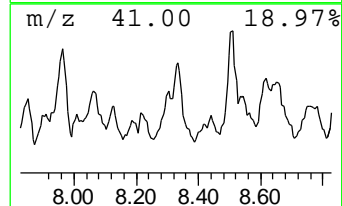
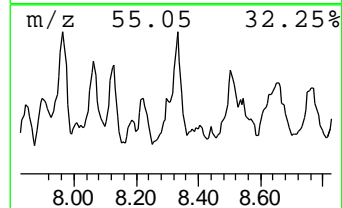
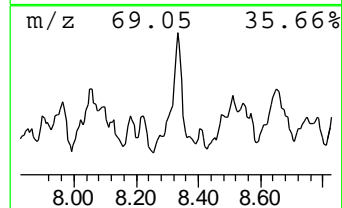
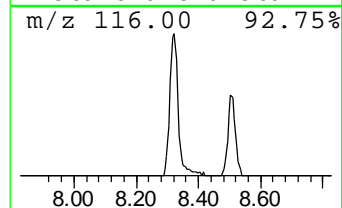
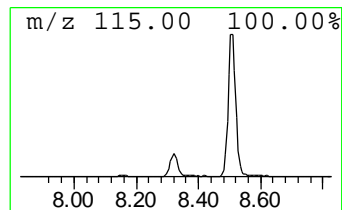
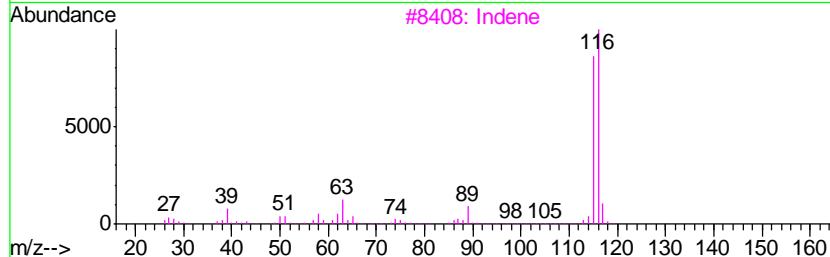
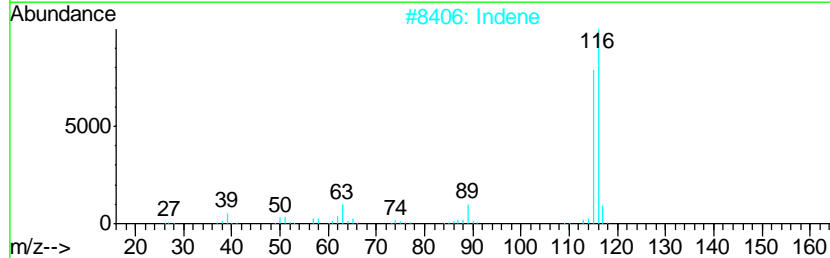
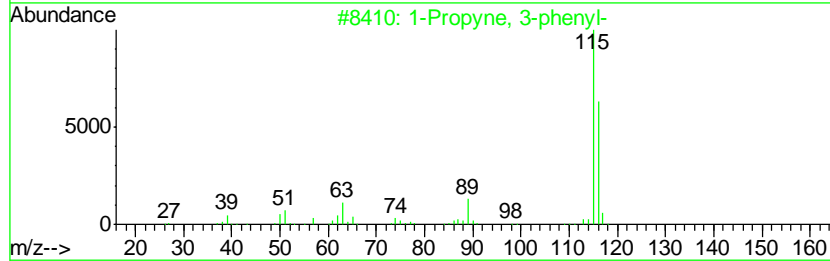
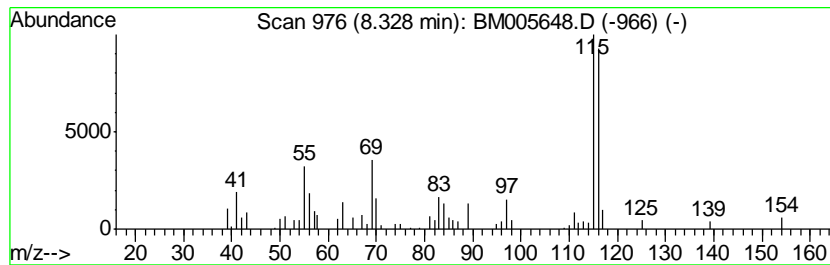
Quant Method : Z:\HPCHEM1\BNA M\METHODS\SOM02.2-EPA-BM052016.M
 Quant Title : SVOA CALIBRATION

TIC Library : C:\DATABASE\NIST11.L
 TIC Integration Parameters: LSCINT.P

 Peak Number 1 1-Propyne, 3-phenyl- Concentration Rank 16

R.T.	EstConc	Area	Relative to ISTD	R.T.
8.33	5.49 ng/ul	205063	1,4-Dichlorobenzene-d4	7.79

Hit#	of	Tentative ID	MW	MolForm	CAS#	Qual
1	5	1-Propyne, 3-phenyl-	116	C9H8	010147-11-2	81
2		Indene	116	C9H8	000095-13-6	81
3		Indene	116	C9H8	000095-13-6	81
4		Benzene, 1-propynyl-	116	C9H8	000673-32-5	74
5		3-Methylphenylacetylene	116	C9H8	000766-82-5	74



Data Path : Z:\HPCHEM1\BNA M\DATA\BM052516\
 Data File : BM005648.D
 Acq On : 25 May 2016 21:51
 Operator : UM/SJ
 Sample : H3086-18
 Misc :
 ALS Vial : 7 Sample Multiplier: 1

Instrument :
 BNA_M
 ClientSampled :
 JHGL2

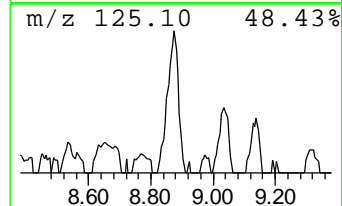
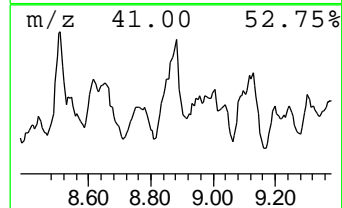
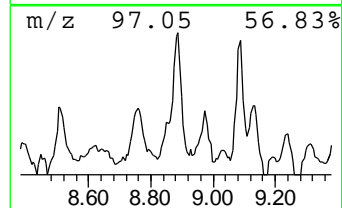
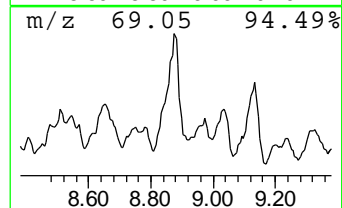
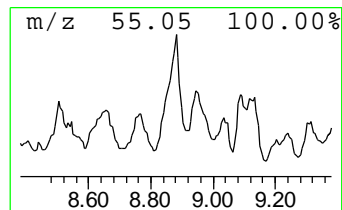
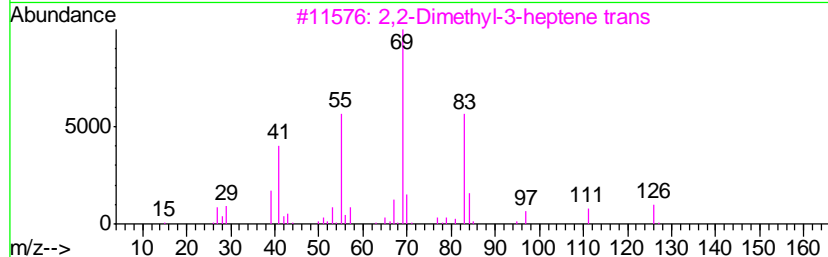
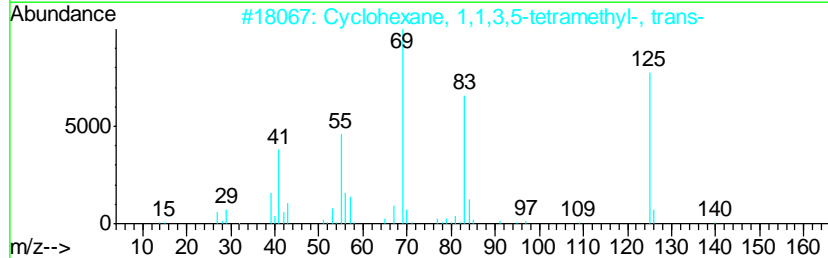
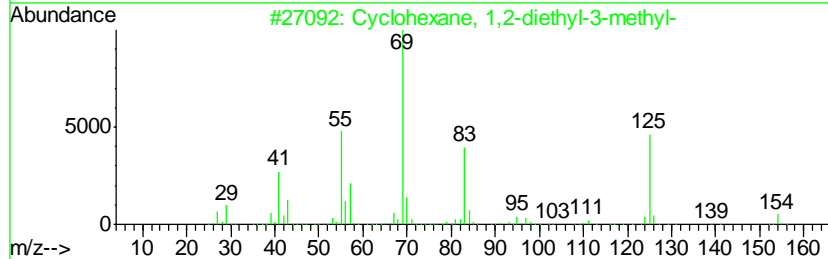
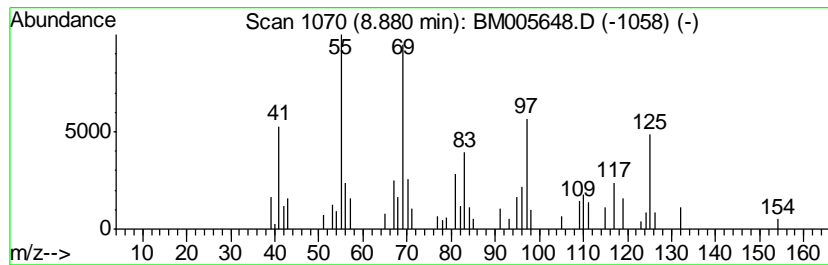
Quant Method : Z:\HPCHEM1\BNA M\METHODS\SOM02.2-EPA-BM052016.M
 Quant Title : SVOA CALIBRATION

TIC Library : C:\DATABASE\NIST11.L
 TIC Integration Parameters: LSCINT.P

 Peak Number 2 (DEL) Alkane: Cyclic-8.88 Concentration Rank 23

R.T.	EstConc	Area	Relative to ISTD	R.T.
8.88	4.70 ng/ul	175525	1,4-Dichlorobenzene-d4	7.79

Hit#	of	Tentative ID	MW	MolForm	CAS#	Qual
1	5	Cyclohexane, 1,2-diethyl-3-methyl-	154	C11H22	061141-80-8	46
2		Cyclohexane, 1,1,3,5-tetramethyl...	140	C10H20	050876-31-8	43
3		2,2-Dimethyl-3-heptene trans	126	C9H18	019550-75-5	35
4		2-Pentene, 3-ethyl-	98	C7H14	000816-79-5	18
5		Cyclopentane, (2-methylpropyl)-	126	C9H18	003788-32-7	18



Data Path : Z:\HPCHEM1\BNA M\DATA\BM052516\
 Data File : BM005648.D
 Acq On : 25 May 2016 21:51
 Operator : UM/SJ
 Sample : H3086-18
 Misc :
 ALS Vial : 7 Sample Multiplier: 1

Instrument :
 BNA_M
 ClientSampled :
 JHGL2

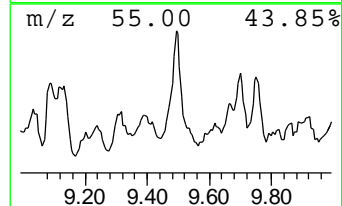
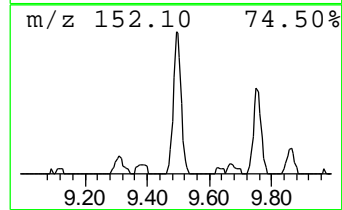
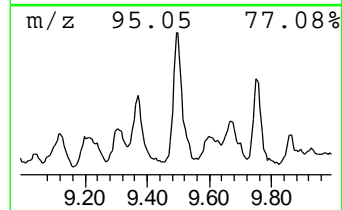
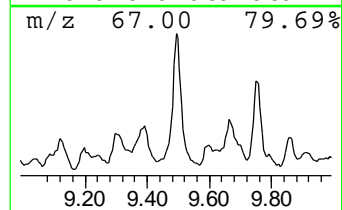
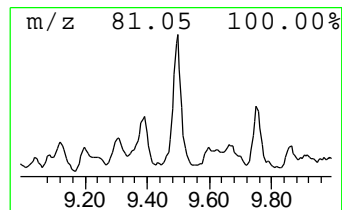
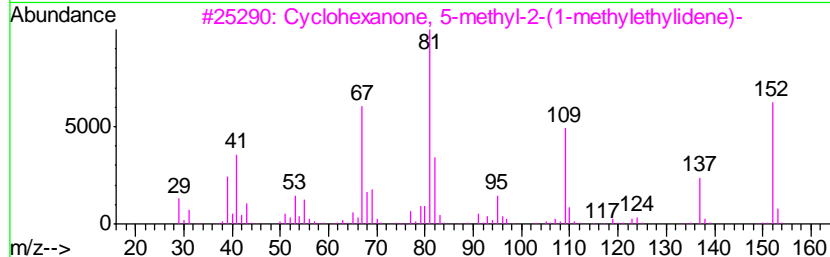
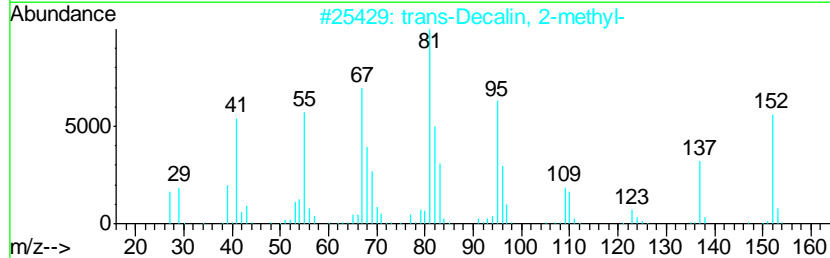
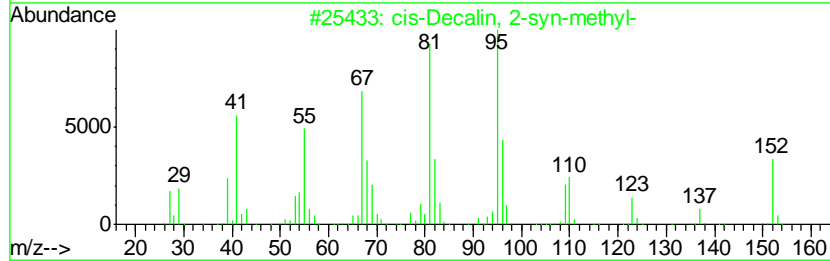
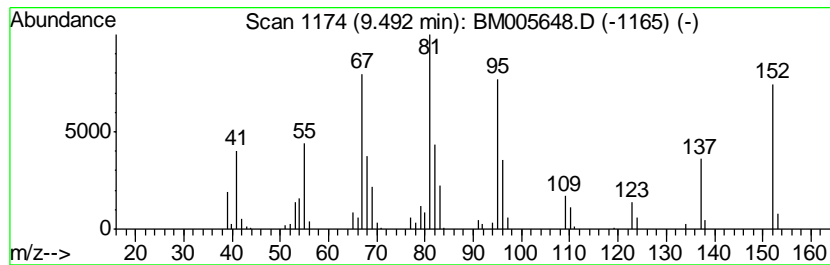
Quant Method : Z:\HPCHEM1\BNA M\METHODS\SOM02.2-EPA-BM052016.M
 Quant Title : SVOA CALIBRATION

TIC Library : C:\DATABASE\NIST11.L
 TIC Integration Parameters: LSCINT.P

 Peak Number 3 (DEL) Alkane: Branched-9.49 Concentration Rank 36

R.T.	EstConc	Area	Relative to ISTD	R.T.
9.49	3.44 ng/ul	237701	Naphthalene-d8	10.58

Hit#	of	Tentative ID	MW	MolForm	CAS#	Qual
1	5	cis-Decalin, 2-syn-methyl-	152	C11H20	1000155-85-6	87
2		trans-Decalin, 2-methyl-	152	C11H20	1000152-47-3	83
3		Cyclohexanone, 5-methyl-2-(1-met...	152	C10H16O	015932-80-6	76
4		Pulegone	152	C10H16O	000089-82-7	76
5		Pulegone	152	C10H16O	000089-82-7	68



Data Path : Z:\HPCHEM1\BNA M\DATA\BM052516\
 Data File : BM005648.D
 Acq On : 25 May 2016 21:51
 Operator : UM/SJ
 Sample : H3086-18
 Misc :
 ALS Vial : 7 Sample Multiplier: 1

Instrument :
 BNA_M
 ClientSampled :
 JHGL2

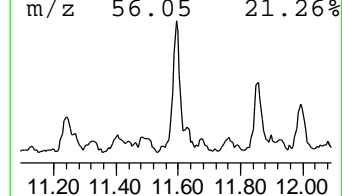
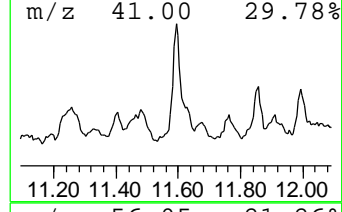
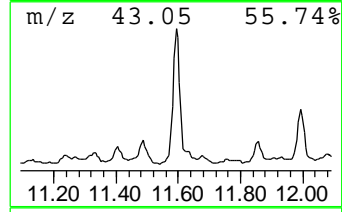
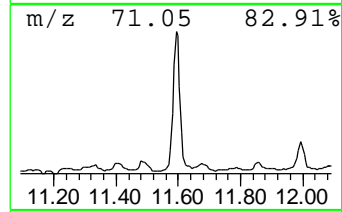
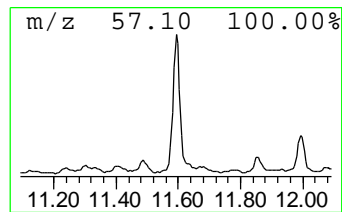
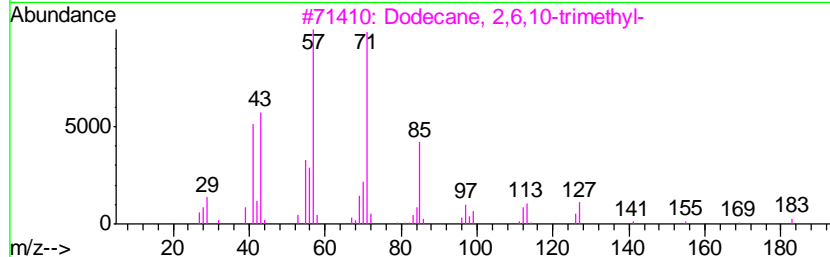
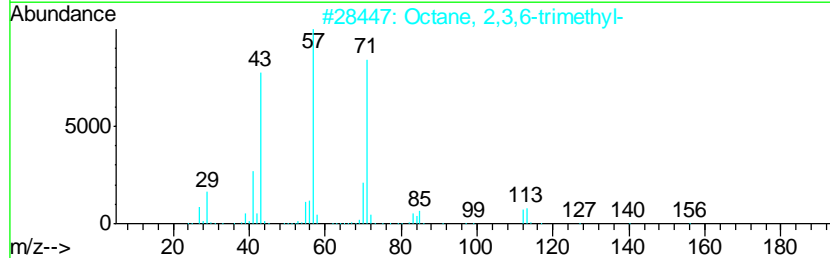
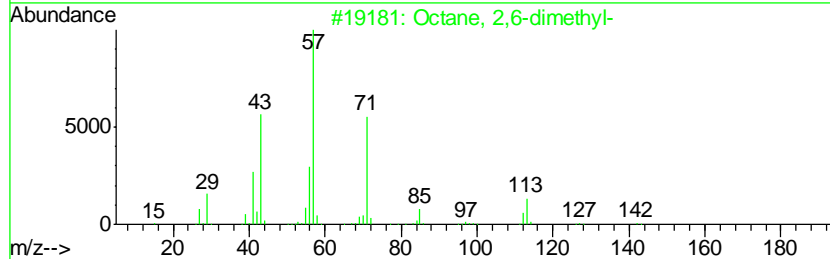
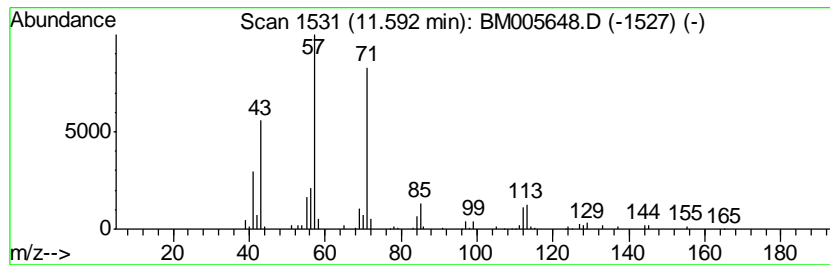
Quant Method : Z:\HPCHEM1\BNA M\METHODS\SOM02.2-EPA-BM052016.M
 Quant Title : SVOA CALIBRATION

TIC Library : C:\DATABASE\NIST11.L
 TIC Integration Parameters: LSCINT.P

 Peak Number 4 (DEL) Alkane: Straight-Chai... Concentration Rank 44

R.T.	EstConc	Area	Relative to ISTD	R.T.
11.59	2.77 ng/ul	191624	Naphthalene-d8	10.58

Hit#	of	Tentative ID	MW	MolForm	CAS#	Qual
1	5	Octane, 2,6-dimethyl-	142	C10H22	002051-30-1	83
2		Octane, 2,3,6-trimethyl-	156	C11H24	062016-33-5	72
3		Dodecane, 2,6,10-trimethyl-	212	C15H32	003891-98-3	64
4		Undecane, 6,6-dimethyl-	184	C13H28	017312-76-4	64
5		Butane, 2,2-dimethyl-	86	C6H14	000075-83-2	53



Data Path : Z:\HPCHEM1\BNA M\DATA\BM052516\
 Data File : BM005648.D
 Acq On : 25 May 2016 21:51
 Operator : UM/SJ
 Sample : H3086-18
 Misc :
 ALS Vial : 7 Sample Multiplier: 1

Instrument :
 BNA_M
 ClientSampleID :
 JHGL2

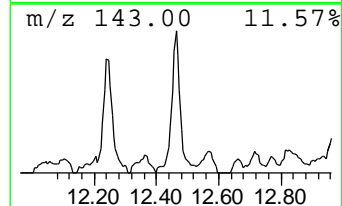
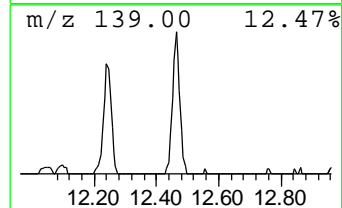
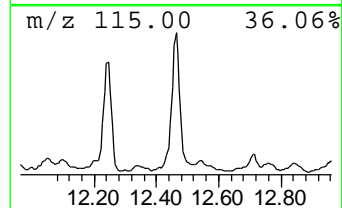
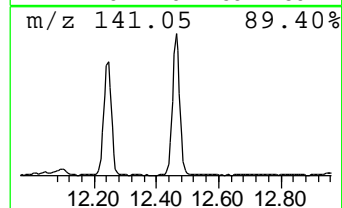
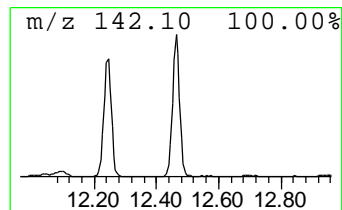
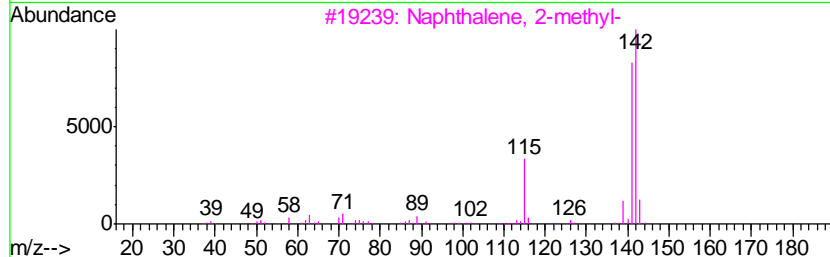
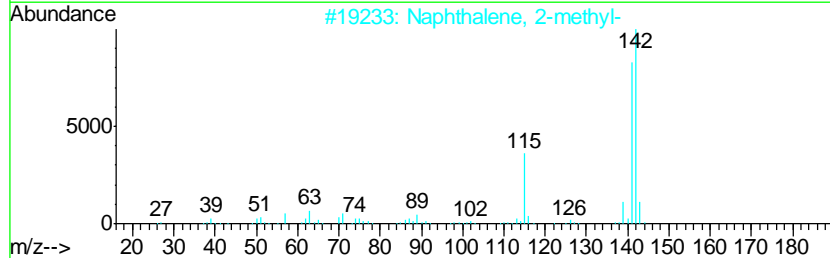
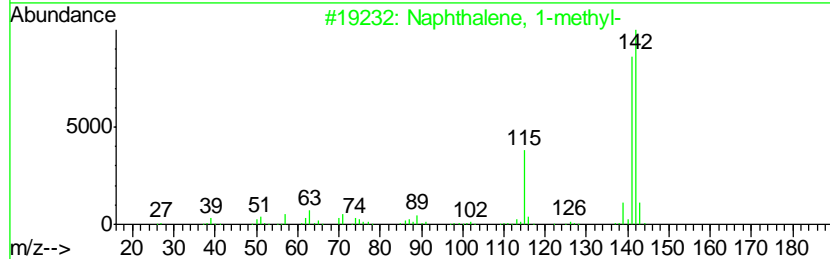
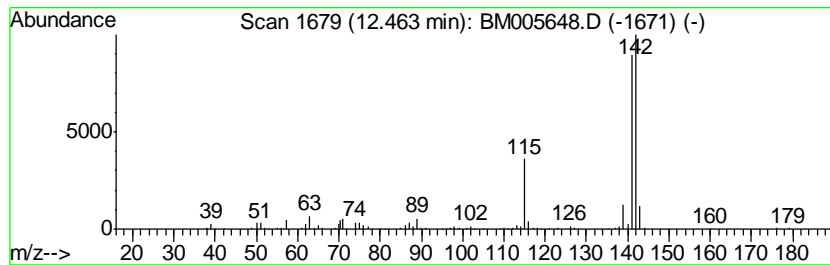
Quant Method : Z:\HPCHEM1\BNA M\METHODS\SOM02.2-EPA-BM052016.M
 Quant Title : SVOA CALIBRATION

TIC Library : C:\DATABASE\NIST11.L
 TIC Integration Parameters: LSCINT.P

 Peak Number 5 Naphthalene, 1-methyl- Concentration Rank 13

R.T.	EstConc	Area	Relative to ISTD	R.T.
12.46	7.09 ng/ul	489504	Naphthalene-d8	10.58

Hit#	of	Tentative ID	MW	MolForm	CAS#	Qual
1	5	Naphthalene, 1-methyl-	142	C11H10	000090-12-0	96
2		Naphthalene, 2-methyl-	142	C11H10	000091-57-6	96
3		Naphthalene, 2-methyl-	142	C11H10	000091-57-6	96
4		Naphthalene, 1-methyl-	142	C11H10	000090-12-0	94
5		Naphthalene, 2-methyl-	142	C11H10	000091-57-6	94



Data Path : Z:\HPCHEM1\BNA M\DATA\BM052516\
 Data File : BM005648.D
 Acq On : 25 May 2016 21:51
 Operator : UM/SJ
 Sample : H3086-18
 Misc :
 ALS Vial : 7 Sample Multiplier: 1

Instrument :
 BNA_M
 ClientSampleID :
 JHGL2

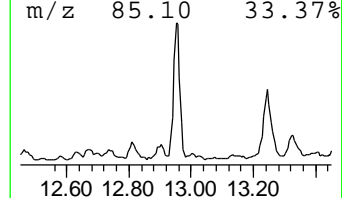
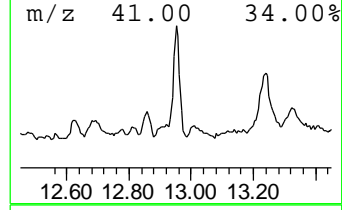
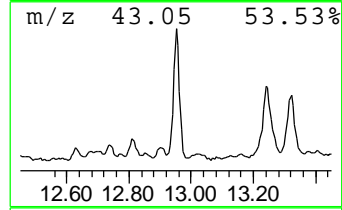
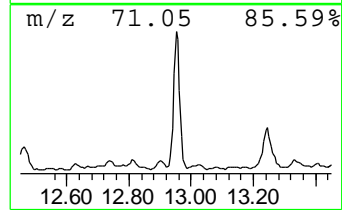
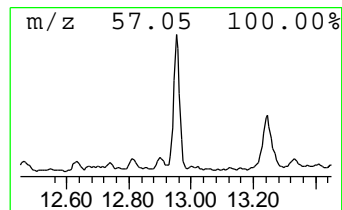
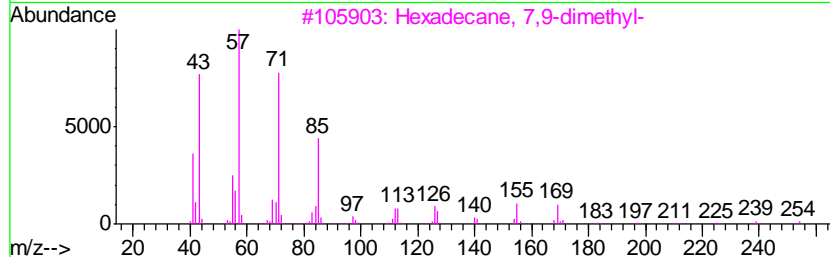
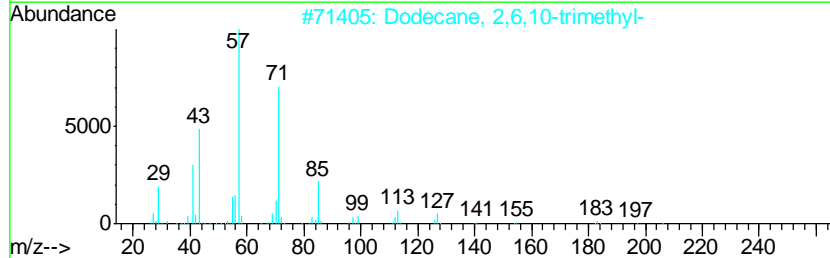
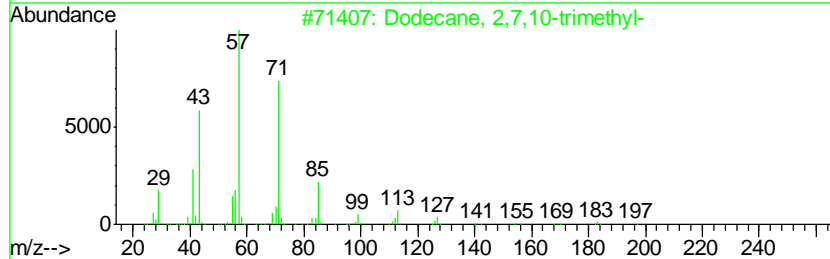
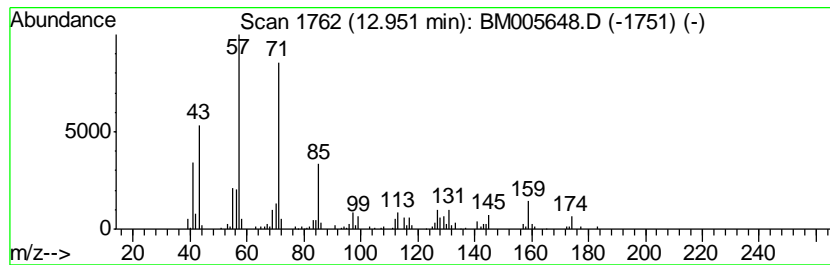
Quant Method : Z:\HPCHEM1\BNA M\METHODS\SOM02.2-EPA-BM052016.M
 Quant Title : SVOA CALIBRATION

TIC Library : C:\DATABASE\NIST11.L
 TIC Integration Parameters: LSCINT.P

 Peak Number 6 (DEL) Alkane: Straight-Chai... Concentration Rank 33

R.T.	EstConc	Area	Relative to ISTD	R.T.
12.95	3.48 ng/ul	334396	Acenaphthene-d10	14.43

Hit#	of	Tentative ID	MW	MolForm	CAS#	Qual
1	5	Dodecane, 2,7,10-trimethyl-	212	C15H32	074645-98-0	72
2		Dodecane, 2,6,10-trimethyl-	212	C15H32	003891-98-3	64
3		Hexadecane, 7,9-dimethyl-	254	C18H38	021164-95-4	53
4		Oxalic acid, butyl neopentyl ester	216	C11H20O4	1000309-72-8	52
5		Sulfurous acid, 2-ethylhexyl tri...	376	C21H44O3S	1000309-19-6	50



Data Path : Z:\HPCHEM1\BNA M\DATA\BM052516\
 Data File : BM005648.D
 Acq On : 25 May 2016 21:51
 Operator : UM/SJ
 Sample : H3086-18
 Misc :
 ALS Vial : 7 Sample Multiplier: 1

Instrument :
 BNA_M
 ClientSampleID :
 JHGL2

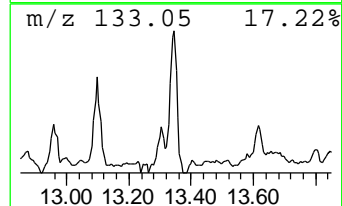
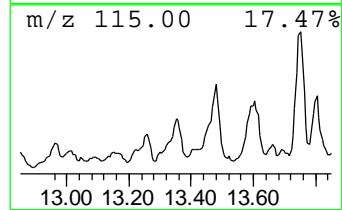
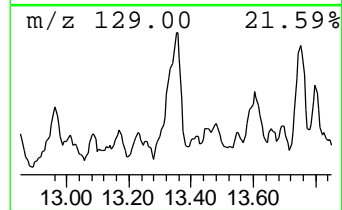
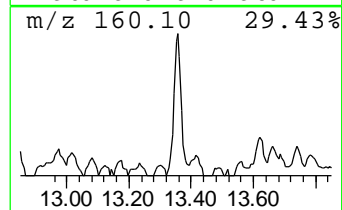
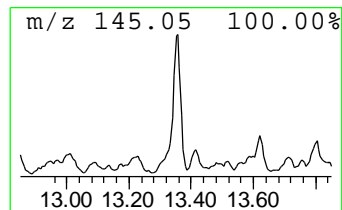
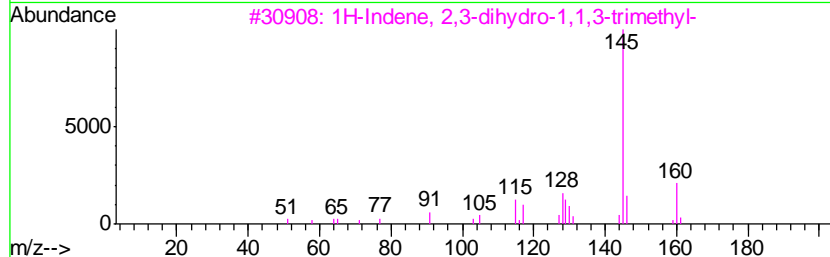
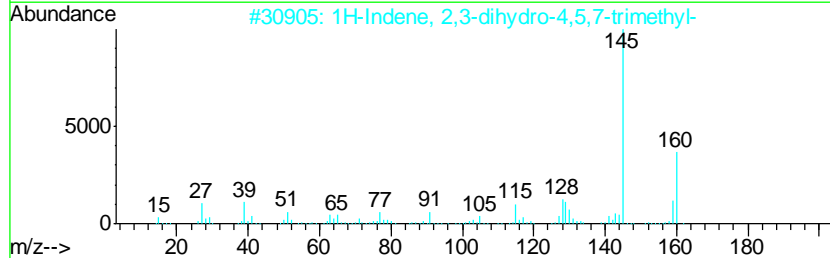
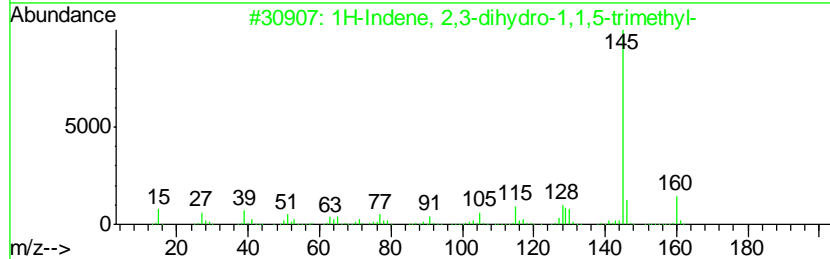
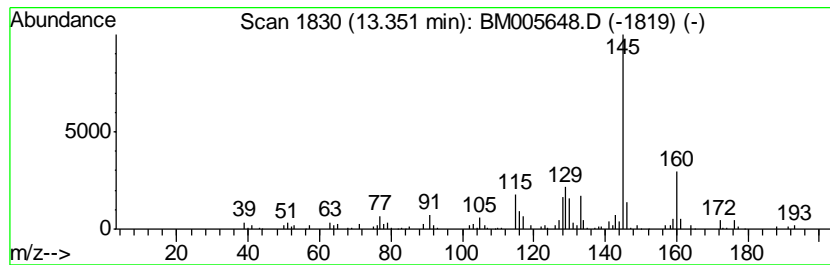
Quant Method : Z:\HPCHEM1\BNA M\METHODS\SOM02.2-EPA-BM052016.M
 Quant Title : SVOA CALIBRATION

TIC Library : C:\DATABASE\NIST11.L
 TIC Integration Parameters: LSCINT.P

 Peak Number 7 1H-Indene, 2,3-dihydro-1,1,... Concentration Rank 43

R.T.	EstConc	Area	Relative to ISTD	R.T.
13.35	2.80 ng/ul	268986	Acenaphthene-d10	14.43

Hit#	of	Tentative ID	MW	MolForm	CAS#	Qual
1	5	1H-Indene, 2,3-dihydro-1,1,5-tri...	160	C12H16	040650-41-7	81
2		1H-Indene, 2,3-dihydro-4,5,7-tri...	160	C12H16	006682-06-0	76
3		1H-Indene, 2,3-dihydro-1,1,3-tri...	160	C12H16	002613-76-5	74
4		Benzene, 1-(1-methylethenyl)-2-(...	160	C12H16	005557-93-7	72
5		Naphthalene, 1,2,3,4-tetrahydro-...	160	C12H16	021693-54-9	70



Data Path : Z:\HPCHEM1\BNA M\DATA\BM052516\
 Data File : BM005648.D
 Acq On : 25 May 2016 21:51
 Operator : UM/SJ
 Sample : H3086-18
 Misc :
 ALS Vial : 7 Sample Multiplier: 1

Instrument :
 BNA_M
 ClientSampled :
 JHGL2

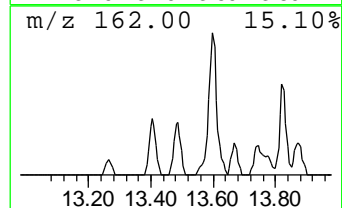
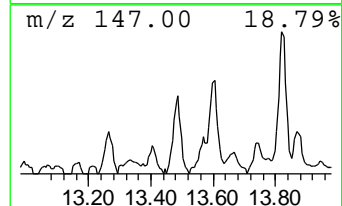
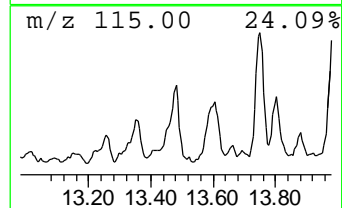
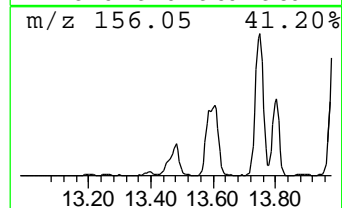
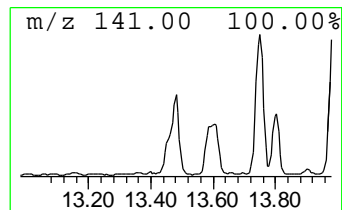
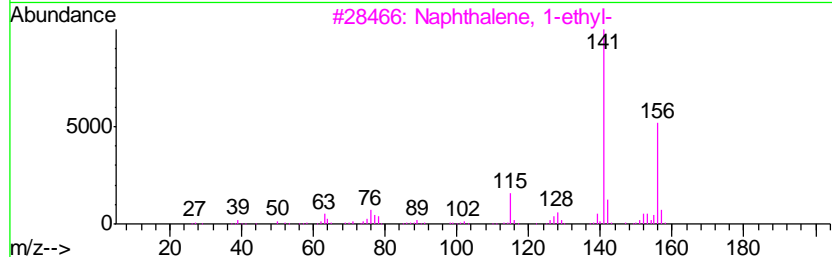
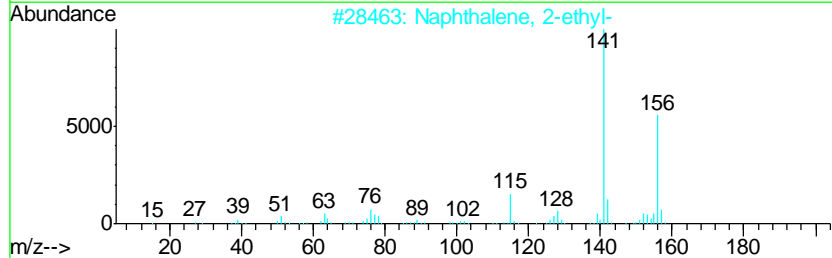
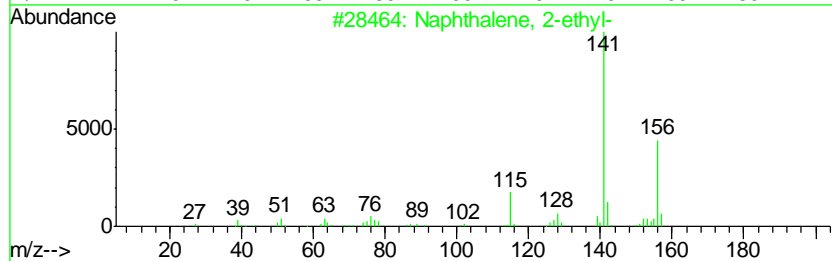
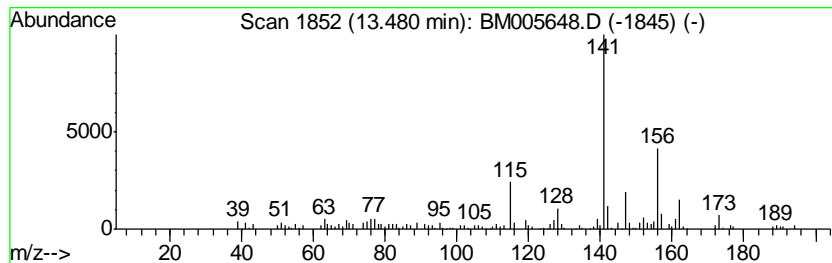
Quant Method : Z:\HPCHEM1\BNA M\METHODS\SOM02.2-EPA-BM052016.M
 Quant Title : SVOA CALIBRATION

TIC Library : C:\DATABASE\NIST11.L
 TIC Integration Parameters: LSCINT.P

 Peak Number 8 Naphthalene, 2-ethyl- Concentration Rank 52

R.T.	EstConc	Area	Relative to ISTD	R.T.
13.48	2.10 ng/ul	201827	Acenaphthene-d10	14.43

Hit#	of	Tentative ID	MW	MolForm	CAS#	Qual
1	5	Naphthalene, 2-ethyl-	156	C12H12	000939-27-5	94
2		Naphthalene, 2-ethyl-	156	C12H12	000939-27-5	91
3		Naphthalene, 1-ethyl-	156	C12H12	001127-76-0	91
4		Naphthalene, 1-ethyl-	156	C12H12	001127-76-0	91
5		Naphthalene, 2-ethyl-	156	C12H12	000939-27-5	91



Data Path : Z:\HPCHEM1\BNA M\DATA\BM052516\
 Data File : BM005648.D
 Acq On : 25 May 2016 21:51
 Operator : UM/SJ
 Sample : H3086-18
 Misc :
 ALS Vial : 7 Sample Multiplier: 1

Instrument :
 BNA_M
 ClientSampled :
 JHGL2

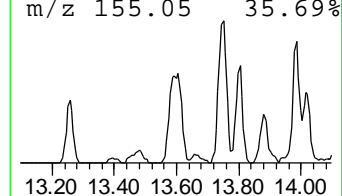
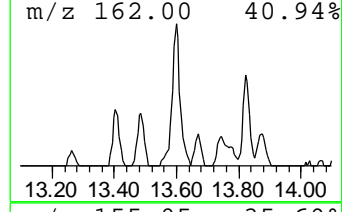
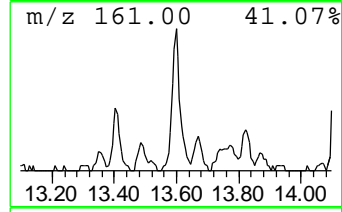
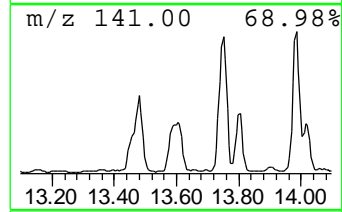
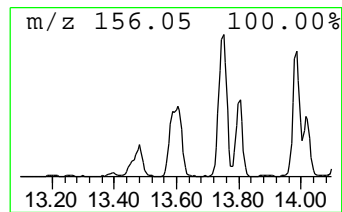
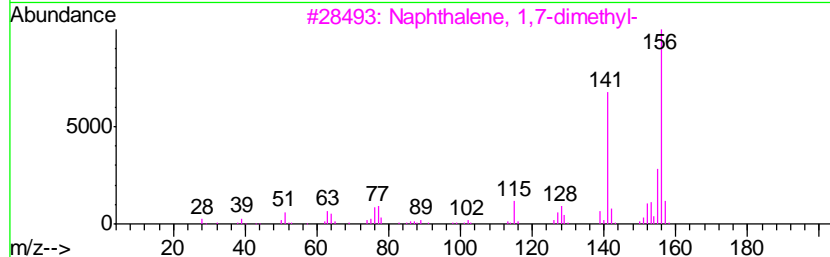
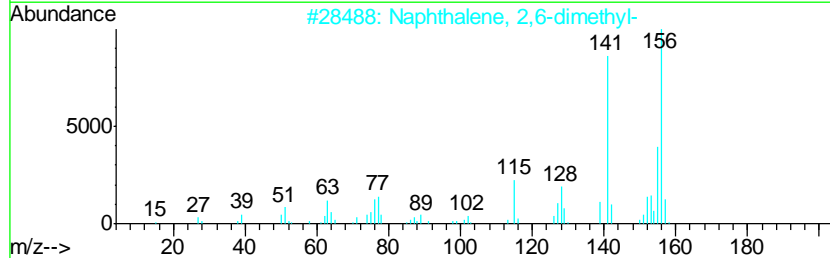
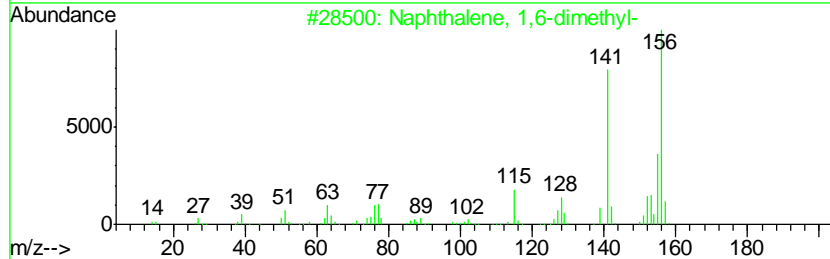
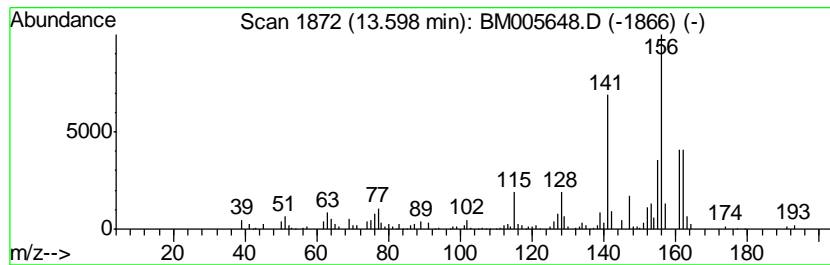
Quant Method : Z:\HPCHEM1\BNA M\METHODS\SOM02.2-EPA-BM052016.M
 Quant Title : SVOA CALIBRATION

TIC Library : C:\DATABASE\NIST11.L
 TIC Integration Parameters: LSCINT.P

 Peak Number 9 Naphthalene, 1,6-dimethyl- Concentration Rank 35

R.T.	EstConc	Area	Relative to ISTD	R.T.
13.60	3.44 ng/ul	331141	Acenaphthene-d10	14.43

Hit#	of	Tentative ID	MW	MolForm	CAS#	Qual
1	5	Naphthalene, 1,6-dimethyl-	156	C12H12	000575-43-9	96
2		Naphthalene, 2,6-dimethyl-	156	C12H12	000581-42-0	96
3		Naphthalene, 1,7-dimethyl-	156	C12H12	000575-37-1	96
4		Naphthalene, 2,7-dimethyl-	156	C12H12	000582-16-1	96
5		Naphthalene, 2,7-dimethyl-	156	C12H12	000582-16-1	95



Data Path : Z:\HPCHEM1\BNA M\DATA\BM052516\
 Data File : BM005648.D
 Acq On : 25 May 2016 21:51
 Operator : UM/SJ
 Sample : H3086-18
 Misc :
 ALS Vial : 7 Sample Multiplier: 1

Instrument :
 BNA_M
 ClientSampled :
 JHGL2

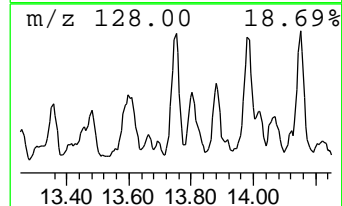
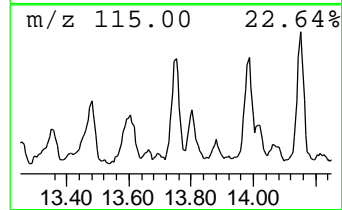
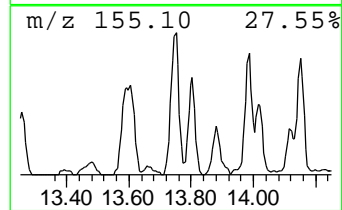
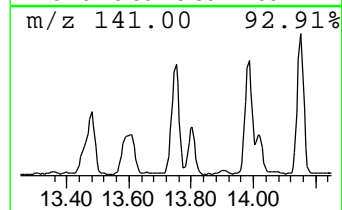
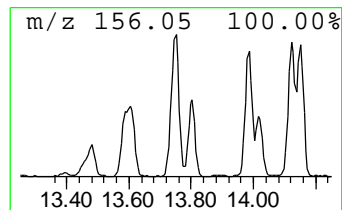
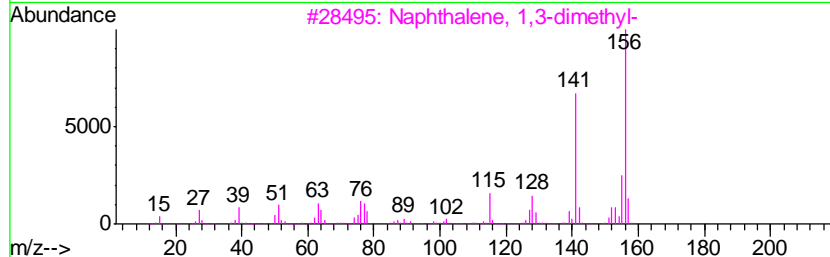
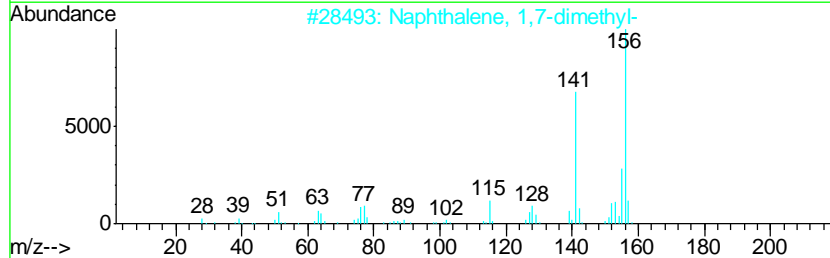
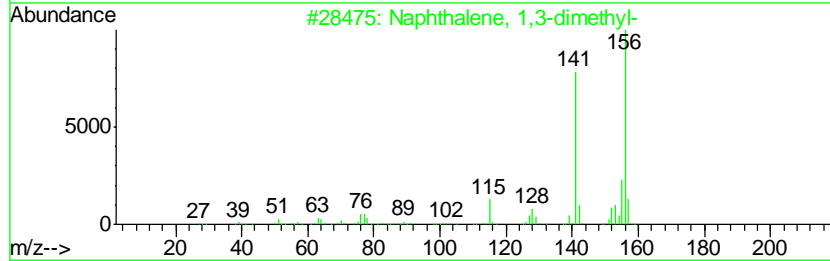
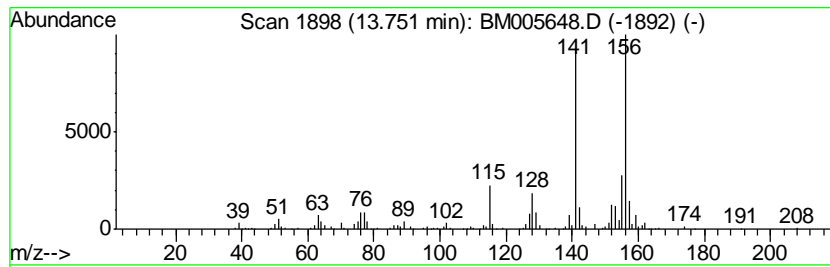
Quant Method : Z:\HPCHEM1\BNA M\METHODS\SOM02.2-EPA-BM052016.M
 Quant Title : SVOA CALIBRATION

TIC Library : C:\DATABASE\NIST11.L
 TIC Integration Parameters: LSCINT.P

 Peak Number 10 Naphthalene, 1,3-dimethyl- Concentration Rank 24

R.T.	EstConc	Area	Relative to ISTD	R.T.
13.75	4.44 ng/ul	427560	Acenaphthene-d10	14.43

Hit#	of	Tentative ID	MW	MolForm	CAS#	Qual
1	5	Naphthalene, 1,3-dimethyl-	156	C12H12	000575-41-7	97
2		Naphthalene, 1,7-dimethyl-	156	C12H12	000575-37-1	96
3		Naphthalene, 1,3-dimethyl-	156	C12H12	000575-41-7	96
4		Naphthalene, 2,3-dimethyl-	156	C12H12	000581-40-8	96
5		Naphthalene, 1,4-dimethyl-	156	C12H12	000571-58-4	96



Data Path : Z:\HPCHEM1\BNA M\DATA\BM052516\
 Data File : BM005648.D
 Acq On : 25 May 2016 21:51
 Operator : UM/SJ
 Sample : H3086-18
 Misc :
 ALS Vial : 7 Sample Multiplier: 1

Instrument :
 BNA_M
 ClientSampled :
 JHGL2

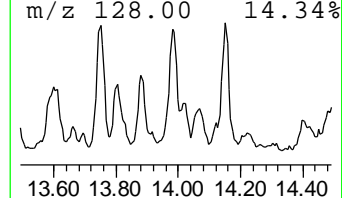
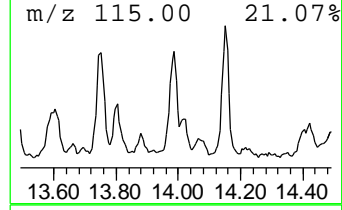
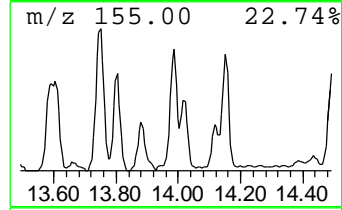
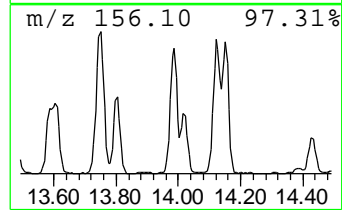
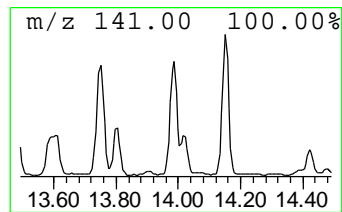
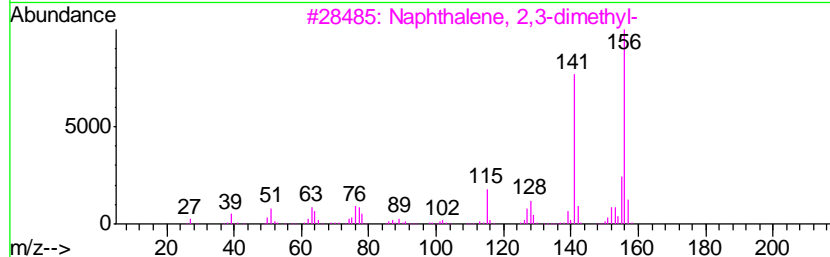
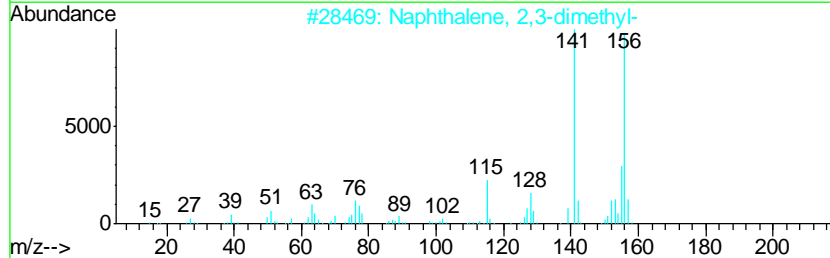
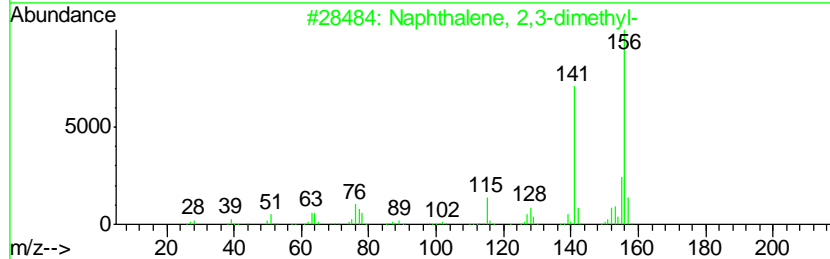
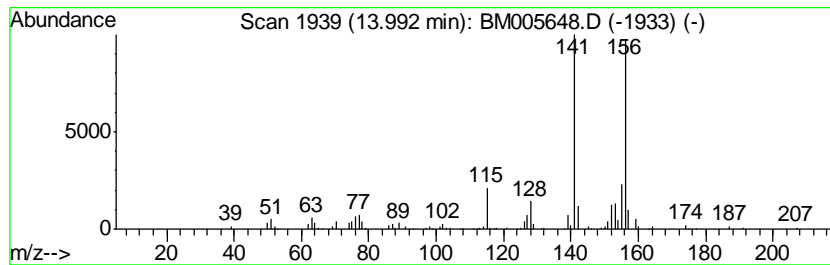
Quant Method : Z:\HPCHEM1\BNA M\METHODS\SOM02.2-EPA-BM052016.M
 Quant Title : SVOA CALIBRATION

TIC Library : C:\DATABASE\NIST11.L
 TIC Integration Parameters: LSCINT.P

 Peak Number 11 Naphthalene, 2,3-dimethyl- Concentration Rank 34

R.T.	EstConc	Area	Relative to ISTD	R.T.
13.99	3.45 ng/ul	331467	Acenaphthene-d10	14.43

Hit#	of	Tentative ID	MW	MolForm	CAS#	Qual
1	5	Naphthalene, 2,3-dimethyl-	156	C12H12	000581-40-8	96
2		Naphthalene, 2,3-dimethyl-	156	C12H12	000581-40-8	96
3		Naphthalene, 2,3-dimethyl-	156	C12H12	000581-40-8	96
4		Naphthalene, 1,7-dimethyl-	156	C12H12	000575-37-1	95
5		Naphthalene, 1,4-dimethyl-	156	C12H12	000571-58-4	95



Data Path : Z:\HPCHEM1\BNA M\DATA\BM052516\
 Data File : BM005648.D
 Acq On : 25 May 2016 21:51
 Operator : UM/SJ
 Sample : H3086-18
 Misc :
 ALS Vial : 7 Sample Multiplier: 1

Instrument :
 BNA_M
 ClientSampleId :
 JHGL2

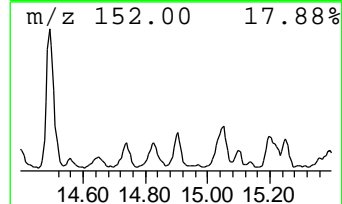
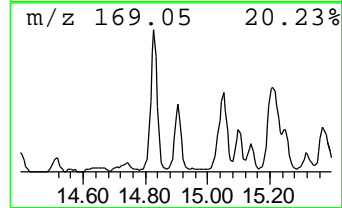
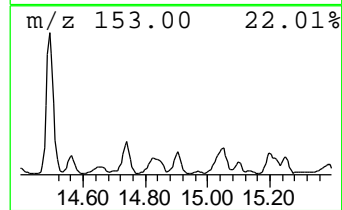
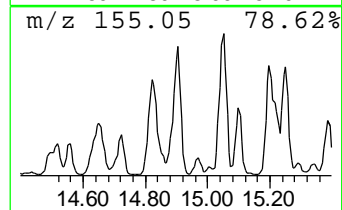
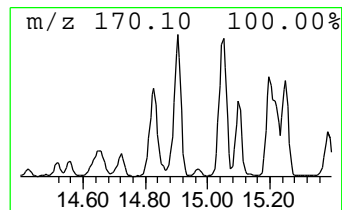
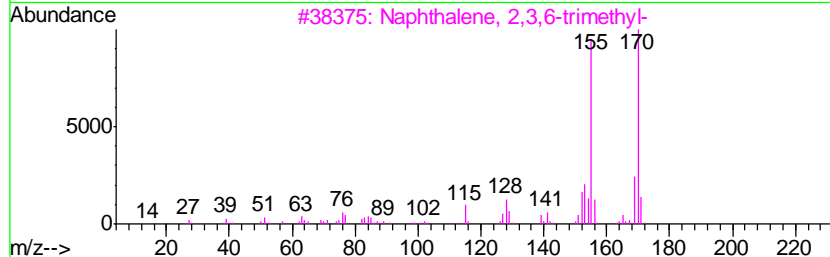
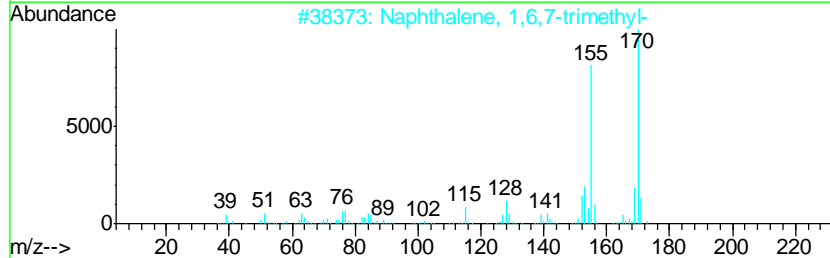
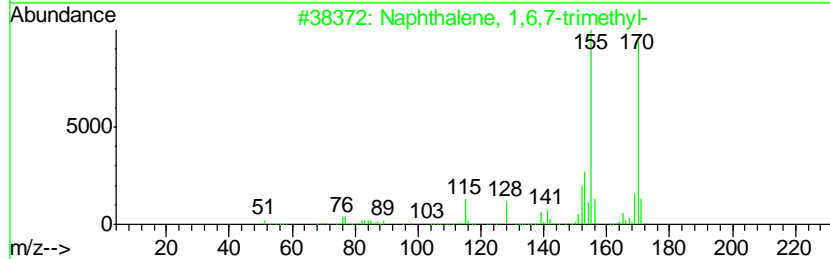
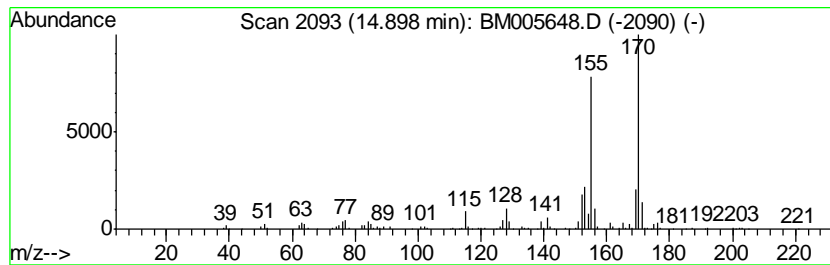
Quant Method : Z:\HPCHEM1\BNA M\METHODS\SOM02.2-EPA-BM052016.M
 Quant Title : SVOA CALIBRATION

TIC Library : C:\DATABASE\NIST11.L
 TIC Integration Parameters: LSCINT.P

 Peak Number 12 Naphthalene, 1,6,7-trimethyl- Concentration Rank 38

R.T.	EstConc	Area	Relative to ISTD	R.T.
14.90	3.20 ng/ul	307370	Acenaphthene-d10	14.43

Hit#	of	Tentative ID	MW	MolForm	CAS#	Qual
1	5	Naphthalene, 1,6,7-trimethyl-	170	C13H14	002245-38-7	96
2		Naphthalene, 1,6,7-trimethyl-	170	C13H14	002245-38-7	96
3		Naphthalene, 2,3,6-trimethyl-	170	C13H14	000829-26-5	96
4		Naphthalene, 1,4,6-trimethyl-	170	C13H14	002131-42-2	96
5		Naphthalene, 1,6,7-trimethyl-	170	C13H14	002245-38-7	94



Data Path : Z:\HPCHEM1\BNA M\DATA\BM052516\
 Data File : BM005648.D
 Acq On : 25 May 2016 21:51
 Operator : UM/SJ
 Sample : H3086-18
 Misc :
 ALS Vial : 7 Sample Multiplier: 1

Instrument :
 BNA_M
 ClientSampleId :
 JHGL2

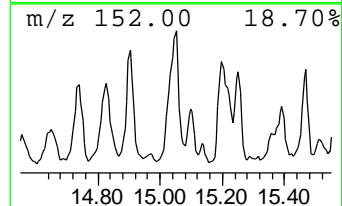
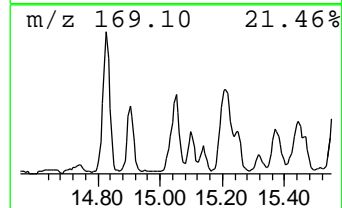
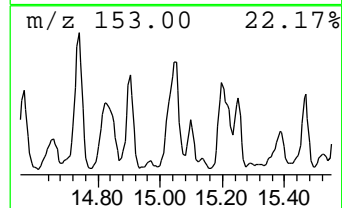
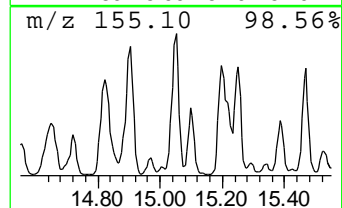
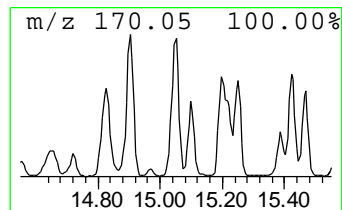
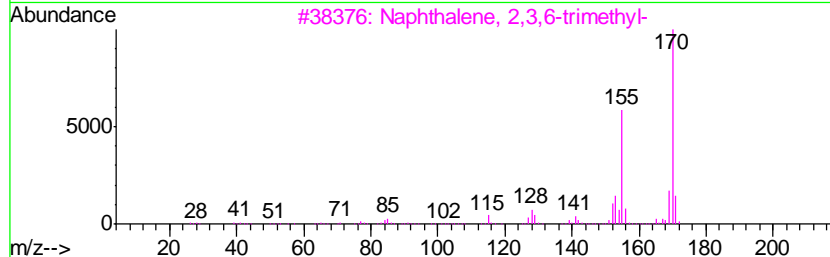
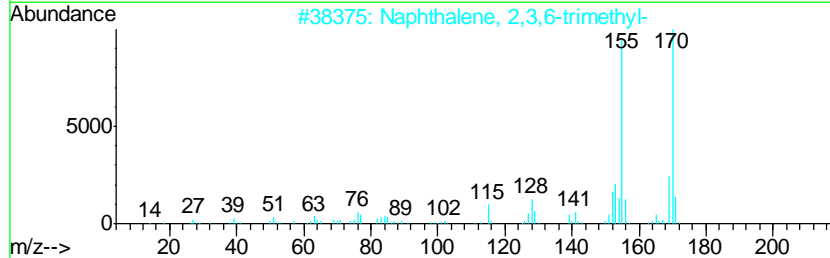
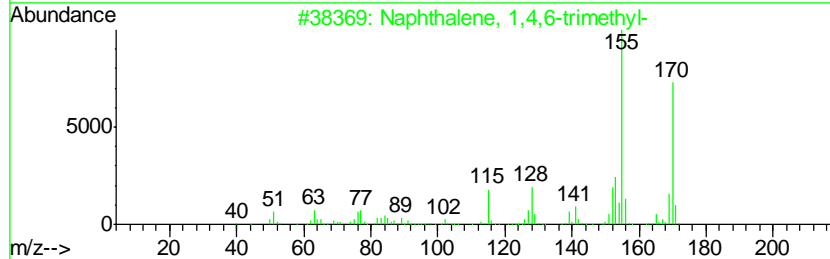
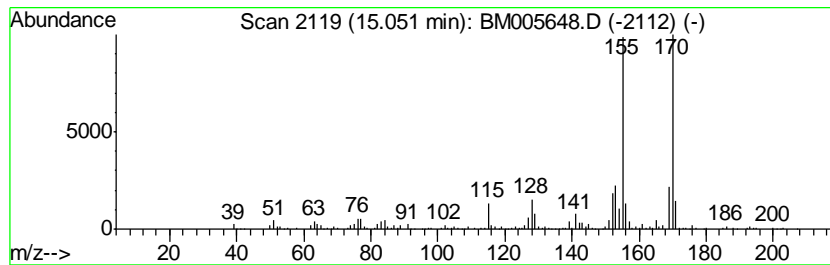
Quant Method : Z:\HPCHEM1\BNA M\METHODS\SOM02.2-EPA-BM052016.M
 Quant Title : SVOA CALIBRATION

TIC Library : C:\DATABASE\NIST11.L
 TIC Integration Parameters: LSCINT.P

 Peak Number 13 Naphthalene, 1,4,6-trimethyl- Concentration Rank 15

R.T.	EstConc	Area	Relative to ISTD	R.T.
15.05	5.64 ng/ul	542786	Acenaphthene-d10	14.43

Hit#	of	Tentative ID	MW	MolForm	CAS#	Qual
1	5	Naphthalene, 1,4,6-trimethyl-	170	C13H14	002131-42-2	97
2		Naphthalene, 2,3,6-trimethyl-	170	C13H14	000829-26-5	97
3		Naphthalene, 2,3,6-trimethyl-	170	C13H14	000829-26-5	97
4		Naphthalene, 2,3,6-trimethyl-	170	C13H14	000829-26-5	97
5		Naphthalene, 2,3,6-trimethyl-	170	C13H14	000829-26-5	96



Data Path : Z:\HPCHEM1\BNA M\DATA\BM052516\
 Data File : BM005648.D
 Acq On : 25 May 2016 21:51
 Operator : UM/SJ
 Sample : H3086-18
 Misc :
 ALS Vial : 7 Sample Multiplier: 1

Instrument :
 BNA_M
 ClientSampleID :
 JHGL2

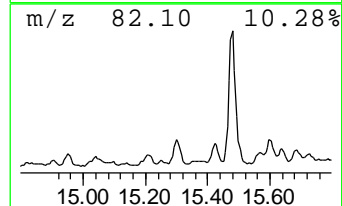
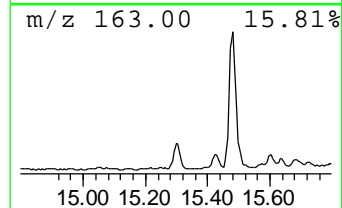
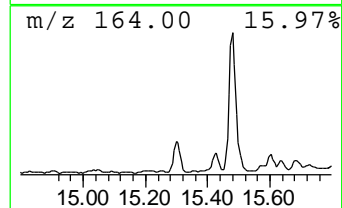
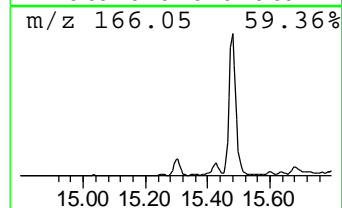
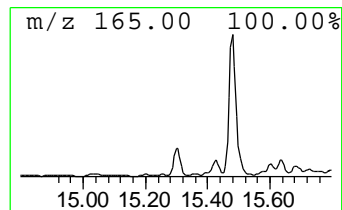
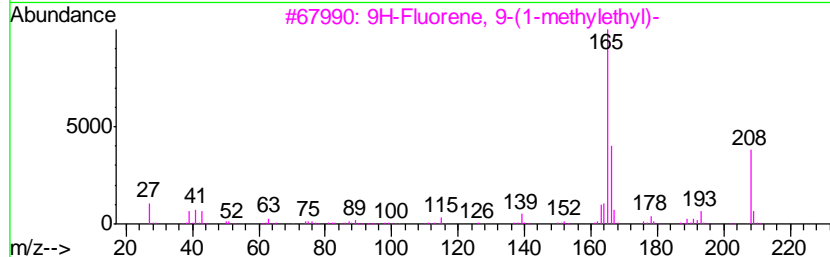
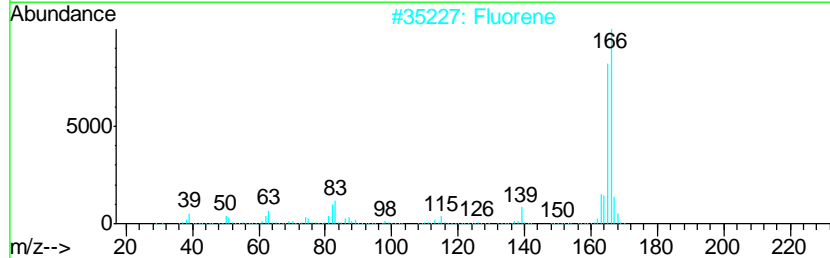
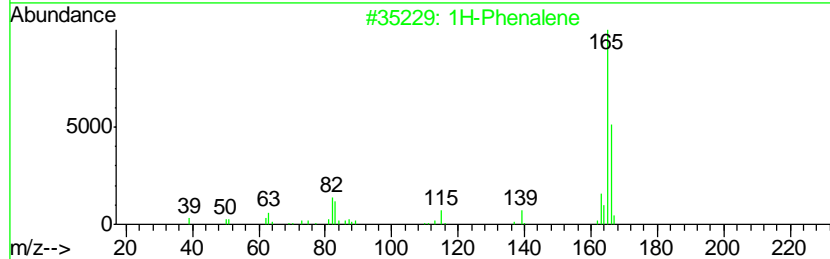
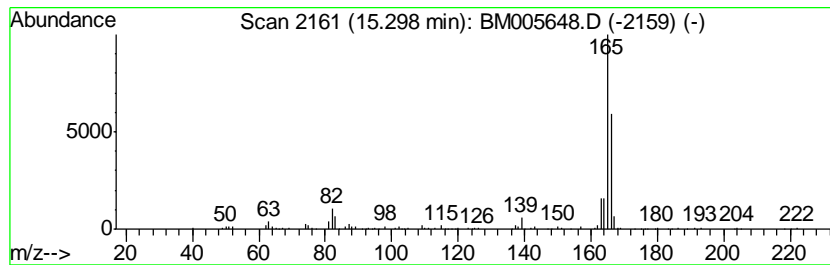
Quant Method : Z:\HPCHEM1\BNA M\METHODS\SOM02.2-EPA-BM052016.M
 Quant Title : SVOA CALIBRATION

TIC Library : C:\DATABASE\NIST11.L
 TIC Integration Parameters: LSCINT.P

 Peak Number 16 1H-Phenalene Concentration Rank 49

R.T.	EstConc	Area	Relative to ISTD	R.T.
15.30	2.28 ng/ul	219213	Acenaphthene-d10	14.43

Hit#	of	Tentative ID	MW	MolForm	CAS#	Qual
1	5	1H-Phenalene	166	C13H10	000203-80-5	83
2		Fluorene	166	C13H10	000086-73-7	58
3		9H-Fluorene, 9-(1-methylethyl)-	208	C16H16	003299-99-8	50
4		Fluorene, 9-chloro-	200	C13H9Cl	006630-65-5	45
5		Fluorene-9-methanol	196	C14H12O	024324-17-2	43



Data Path : Z:\HPCHEM1\BNA M\DATA\BM052516\
 Data File : BM005648.D
 Acq On : 25 May 2016 21:51
 Operator : UM/SJ
 Sample : H3086-18
 Misc :
 ALS Vial : 7 Sample Multiplier: 1

Instrument :
 BNA_M
 ClientSampleID :
 JHGL2

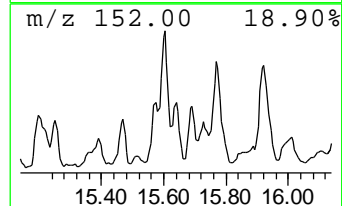
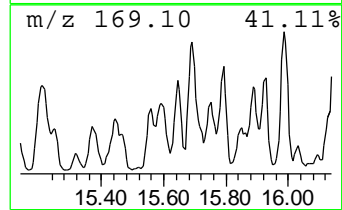
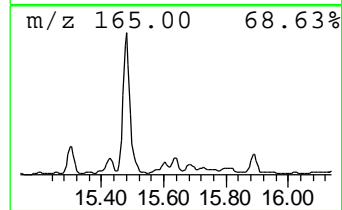
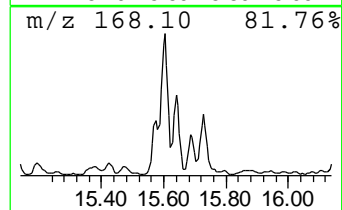
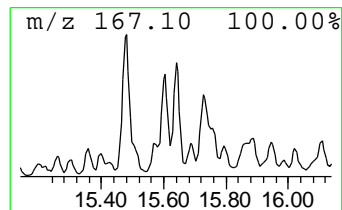
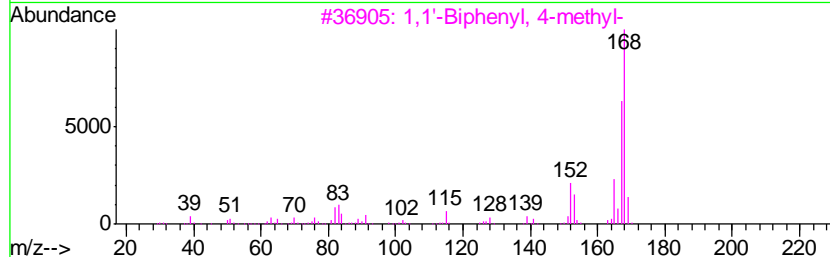
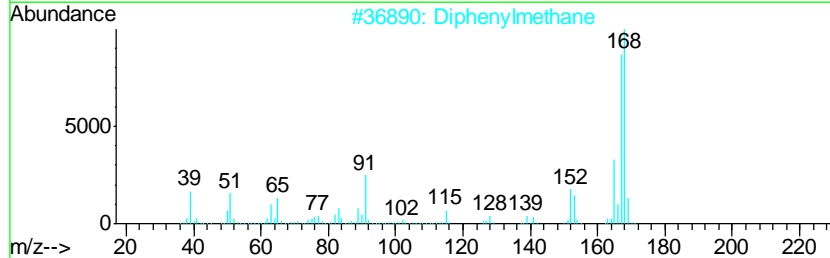
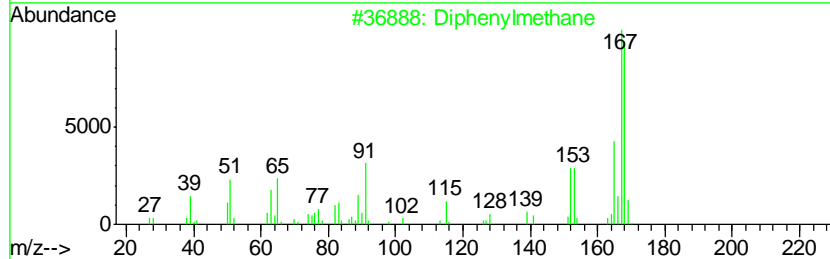
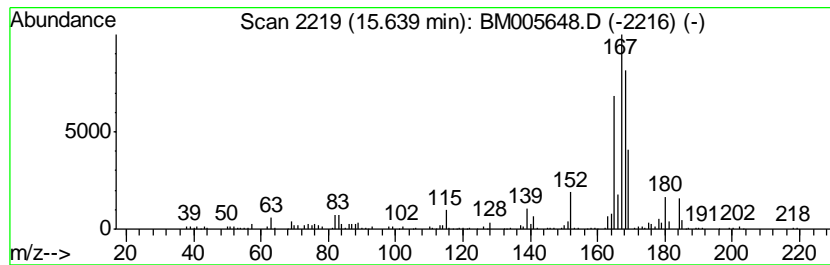
Quant Method : Z:\HPCHEM1\BNA M\METHODS\SOM02.2-EPA-BM052016.M
 Quant Title : SVOA CALIBRATION

TIC Library : C:\DATABASE\NIST11.L
 TIC Integration Parameters: LSCINT.P

 Peak Number 17 Diphenylmethane Concentration Rank 50

R.T.	EstConc	Area	Relative to ISTD	R.T.
15.64	2.21 ng/ul	212963	Acenaphthene-d10	14.43

Hit#	of	Tentative ID	MW	MolForm	CAS#	Qual
1	5	Diphenylmethane	168	C13H12	000101-81-5	52
2		Diphenylmethane	168	C13H12	000101-81-5	50
3		1,1'-Biphenyl, 4-methyl-	168	C13H12	000644-08-6	43
4		1,1'-Biphenyl, 3-methyl-	168	C13H12	000643-93-6	43
5		Fluorene, 1,4-dihydro-	168	C13H12	041593-21-9	43



Data Path : Z:\HPCHEM1\BNA M\DATA\BM052516\
 Data File : BM005648.D
 Acq On : 25 May 2016 21:51
 Operator : UM/SJ
 Sample : H3086-18
 Misc :
 ALS Vial : 7 Sample Multiplier: 1

Instrument :
 BNA_M
 ClientSampleId :
 JHGL2

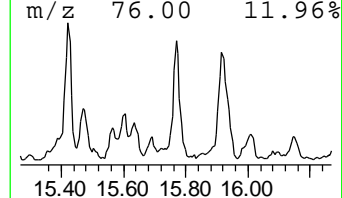
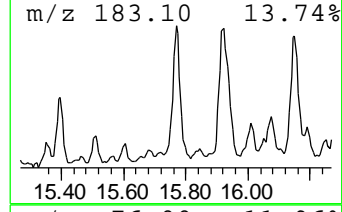
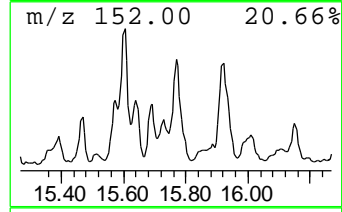
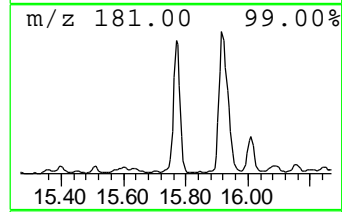
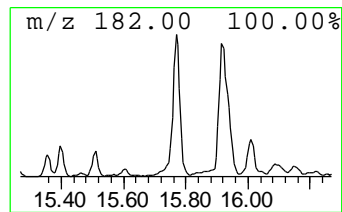
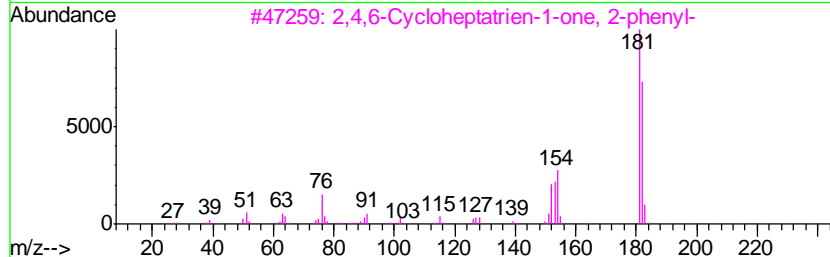
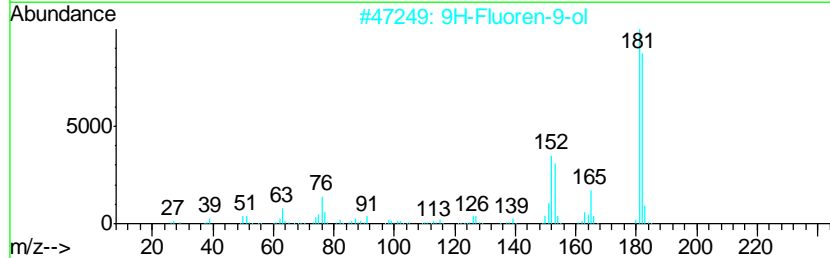
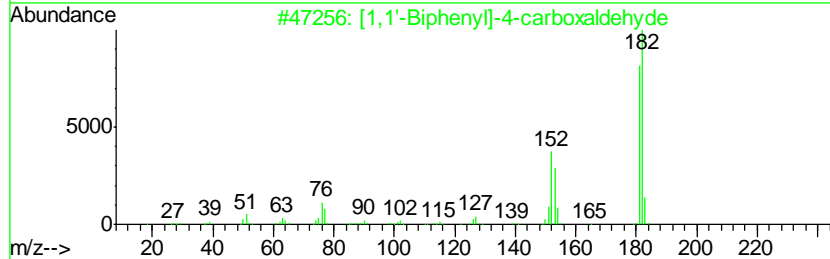
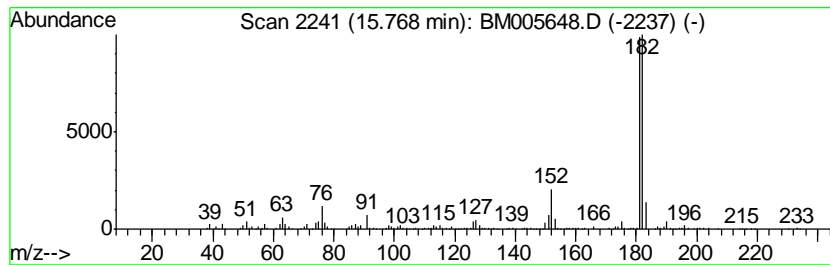
Quant Method : Z:\HPCHEM1\BNA M\METHODS\SOM02.2-EPA-BM052016.M
 Quant Title : SVOA CALIBRATION

TIC Library : C:\DATABASE\NIST11.L
 TIC Integration Parameters: LSCINT.P

 Peak Number 18 [1,1'-Biphenyl]-4-carboxald... Concentration Rank 17

R.T.	EstConc	Area	Relative to ISTD	R.T.
15.77	5.24 ng/ul	504119	Acenaphthene-d10	14.43

Hit#	of	Tentative ID	MW	MolForm	CAS#	Qual
1	5	[1,1'-Biphenyl]-4-carboxaldehyde	182	C13H10O	003218-36-8	81
2		9H-Fluoren-9-ol	182	C13H10O	001689-64-1	80
3		2,4,6-Cycloheptatrien-1-one, 2-phenyl-	182	C13H10O	014562-09-5	80
4		[1,1'-Biphenyl]-4-carboxaldehyde	182	C13H10O	003218-36-8	78
5		[1,1'-Biphenyl]-4-carboxaldehyde	182	C13H10O	003218-36-8	78



Data Path : Z:\HPCHEM1\BNA M\DATA\BM052516\
 Data File : BM005648.D
 Acq On : 25 May 2016 21:51
 Operator : UM/SJ
 Sample : H3086-18
 Misc :
 ALS Vial : 7 Sample Multiplier: 1

Instrument :
 BNA_M
 ClientSampled :
 JHGL2

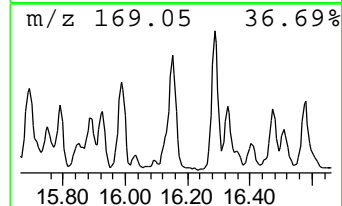
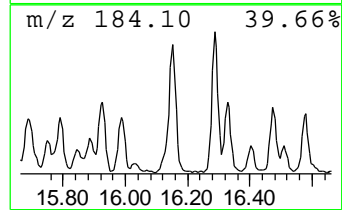
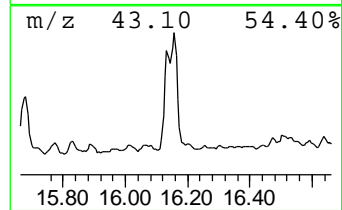
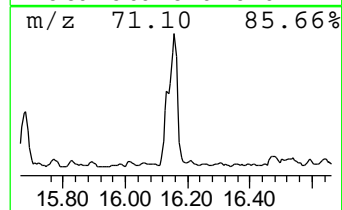
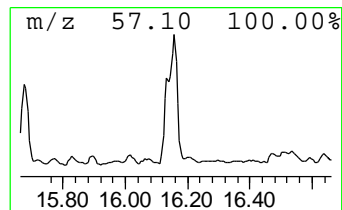
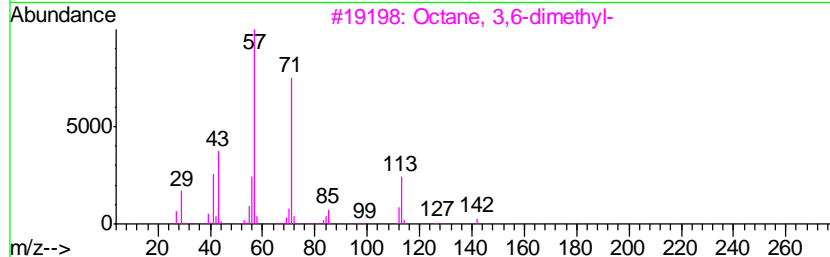
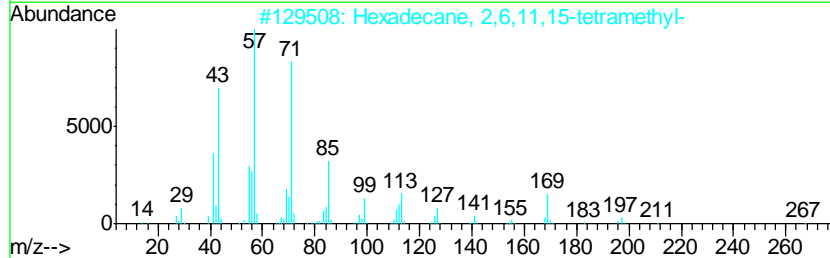
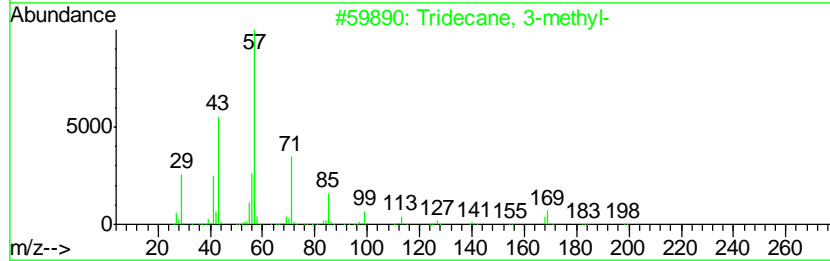
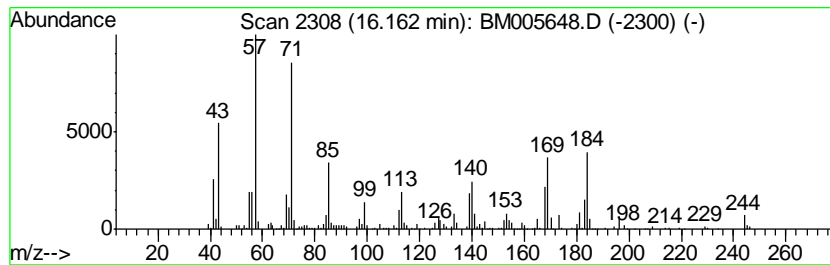
Quant Method : Z:\HPCHEM1\BNA M\METHODS\SOM02.2-EPA-BM052016.M
 Quant Title : SVOA CALIBRATION

TIC Library : C:\DATABASE\NIST11.L
 TIC Integration Parameters: LSCINT.P

 Peak Number 21 (DEL) Alkane: Straight-Chai... Concentration Rank 12

R.T.	EstConc	Area	Relative to ISTD	R.T.
16.16	7.48 ng/ul	738877	Phenanthrene-d10	17.18

Hit#	of	Tentative ID	MW	MolForm	CAS#	Qual
1	5	Tridecane, 3-methyl-	198	C14H30	006418-41-3	46
2		Hexadecane, 2,6,11,15-tetramethyl-	282	C20H42	000504-44-9	38
3		Octane, 3,6-dimethyl-	142	C10H22	015869-94-0	35
4		1,4,5,8-Tetramethylnaphthalene	184	C14H16	002717-39-7	35
5		Octane, 2,6-dimethyl-	142	C10H22	002051-30-1	30



Data Path : Z:\HPCHEM1\BNA M\DATA\BM052516\
 Data File : BM005648.D
 Acq On : 25 May 2016 21:51
 Operator : UM/SJ
 Sample : H3086-18
 Misc :
 ALS Vial : 7 Sample Multiplier: 1

Instrument :
 BNA_M
 ClientSampled :
 JHGL2

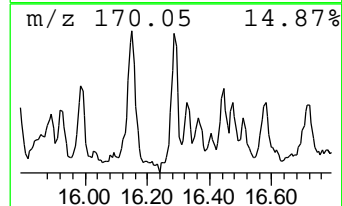
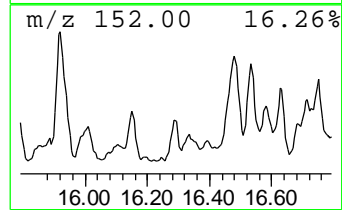
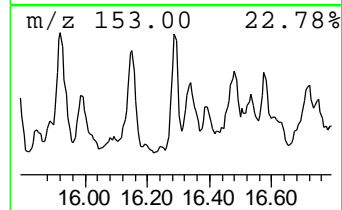
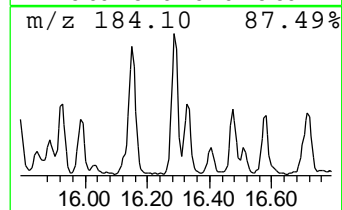
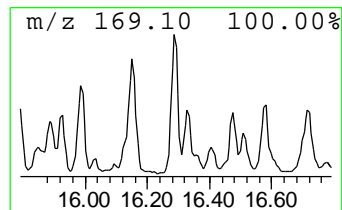
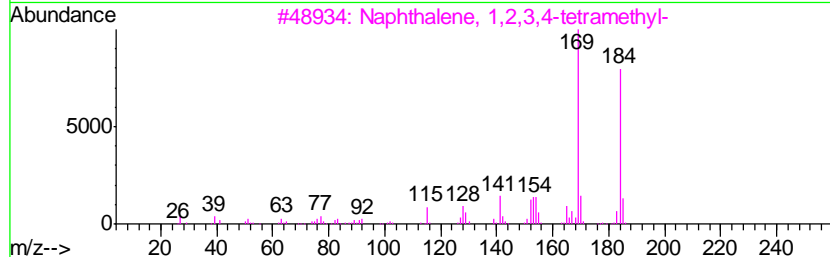
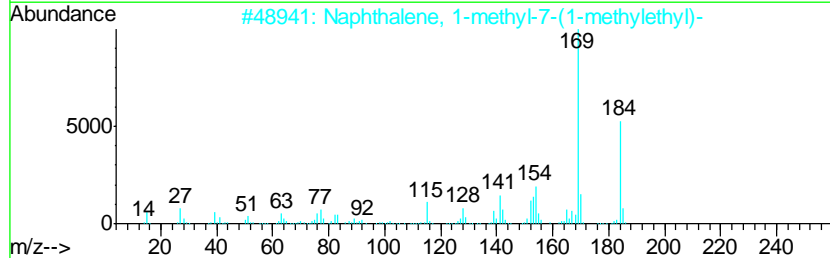
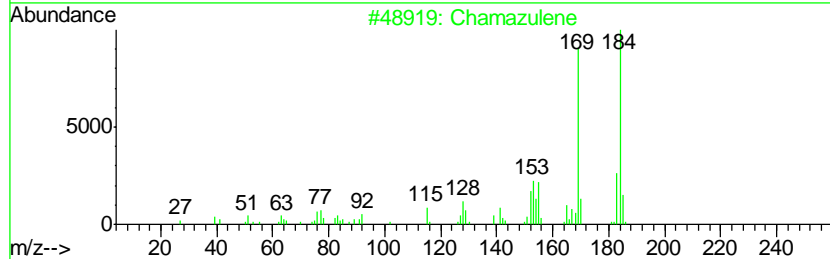
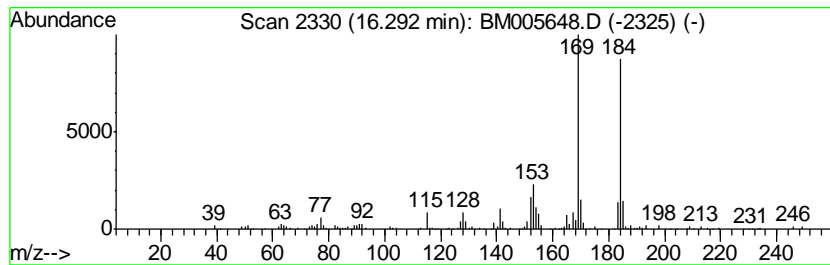
Quant Method : Z:\HPCHEM1\BNA M\METHODS\SOM02.2-EPA-BM052016.M
 Quant Title : SVOA CALIBRATION

TIC Library : C:\DATABASE\NIST11.L
 TIC Integration Parameters: LSCINT.P

 Peak Number 22 Chamazulene Concentration Rank 53

R.T.	EstConc	Area	Relative to ISTD	R.T.
16.29	2.05 ng/ul	202286	Phenanthrene-d10	17.18

Hit#	of	Tentative ID	MW	MolForm	CAS#	Qual
1	5	Chamazulene	184	C14H16	000529-05-5	94
2		Naphthalene, 1-methyl-7-(1-methy...	184	C14H16	000490-65-3	93
3		Naphthalene, 1,2,3,4-tetramethyl-	184	C14H16	003031-15-0	87
4		Cyclopentene, 1,2-dimethyl-4-met...	184	C14H16	1000152-22-4	87
5		Naphthalene, 1-methyl-7-(1-methy...	184	C14H16	000490-65-3	81



Data Path : Z:\HPCHEM1\BNA M\DATA\BM052516\
 Data File : BM005648.D
 Acq On : 25 May 2016 21:51
 Operator : UM/SJ
 Sample : H3086-18
 Misc :
 ALS Vial : 7 Sample Multiplier: 1

Instrument :
 BNA_M
 ClientSampled :
 JHGL2

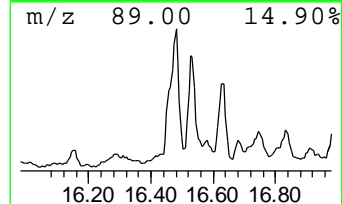
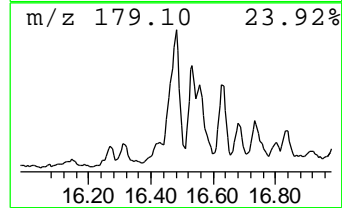
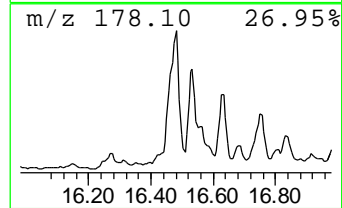
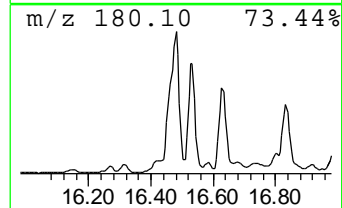
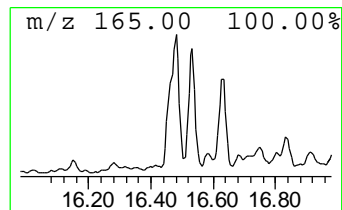
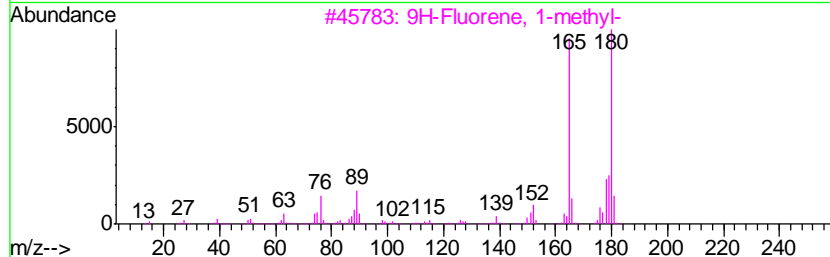
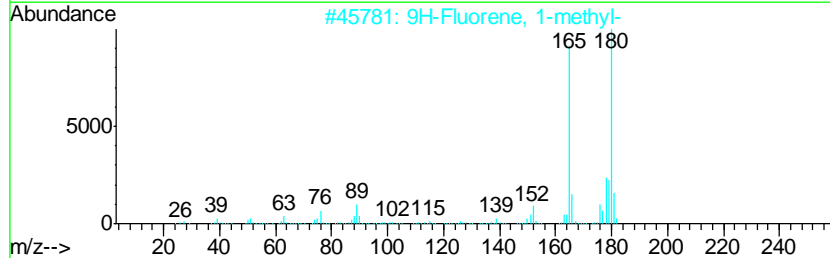
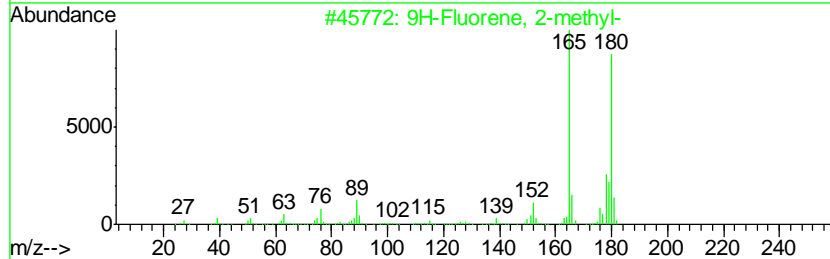
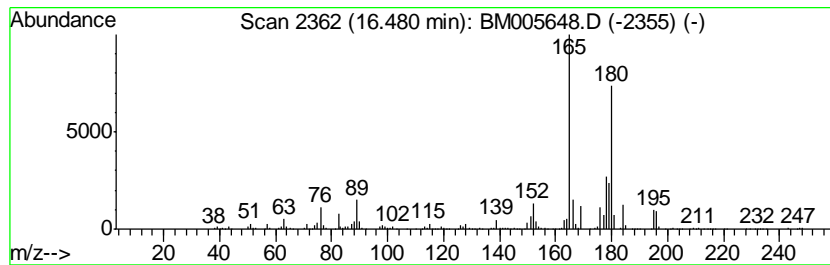
Quant Method : Z:\HPCHEM1\BNA M\METHODS\SOM02.2-EPA-BM052016.M
 Quant Title : SVOA CALIBRATION

TIC Library : C:\DATABASE\NIST11.L
 TIC Integration Parameters: LSCINT.P

 Peak Number 23 9H-Fluorene, 2-methyl- Concentration Rank 10

R.T.	EstConc	Area	Relative to ISTD	R.T.
16.48	9.21 ng/ul	909670	Phenanthrene-d10	17.18

Hit#	of	Tentative ID	MW	MolForm	CAS#	Qual
1	5	9H-Fluorene, 2-methyl-	180	C14H12	001430-97-3	93
2		9H-Fluorene, 1-methyl-	180	C14H12	001730-37-6	86
3		9H-Fluorene, 1-methyl-	180	C14H12	001730-37-6	70
4		9H-Fluorene, 3-methyl-	180	C14H12	002523-39-9	70
5		9H-Fluorene, 9-methyl-	180	C14H12	002523-37-7	62



Data Path : Z:\HPCHEM1\BNA M\DATA\BM052516\
 Data File : BM005648.D
 Acq On : 25 May 2016 21:51
 Operator : UM/SJ
 Sample : H3086-18
 Misc :
 ALS Vial : 7 Sample Multiplier: 1

Instrument :
 BNA_M
 ClientSampleID :
 JHGL2

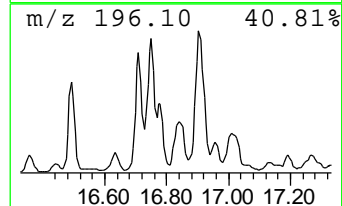
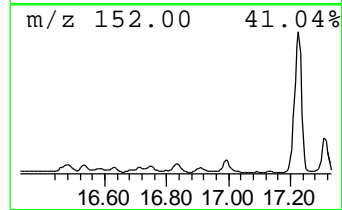
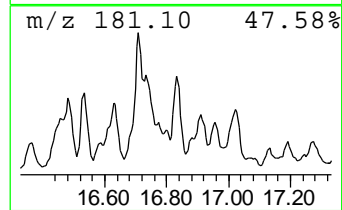
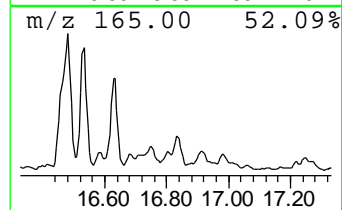
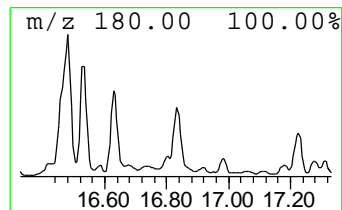
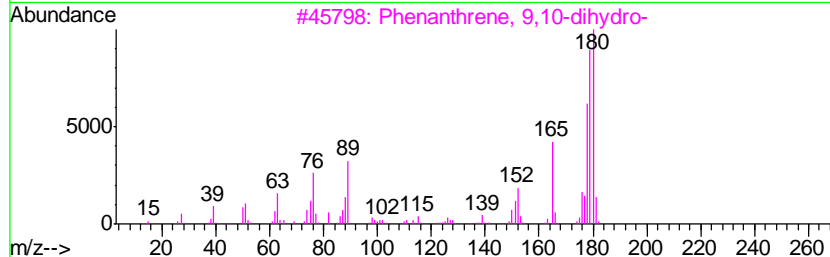
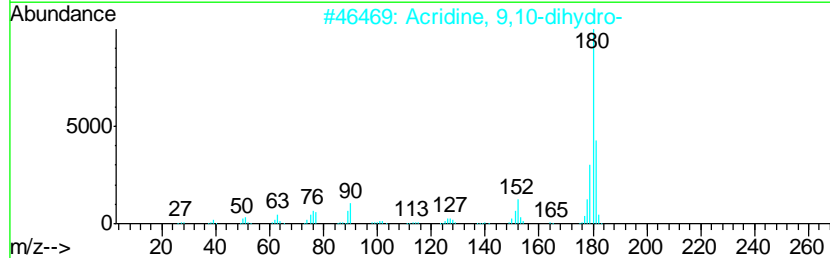
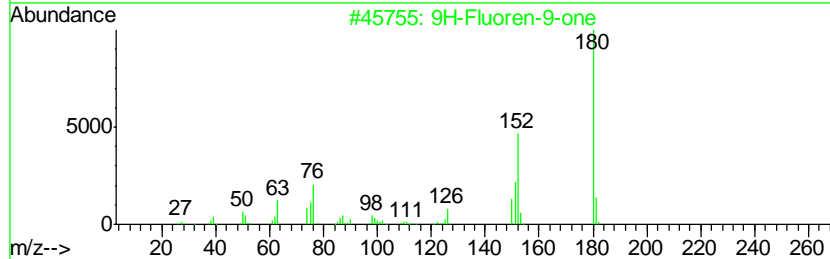
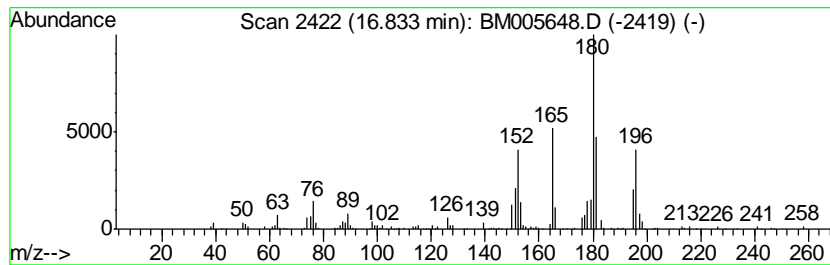
Quant Method : Z:\HPCHEM1\BNA M\METHODS\SOM02.2-EPA-BM052016.M
 Quant Title : SVOA CALIBRATION

TIC Library : C:\DATABASE\NIST11.L
 TIC Integration Parameters: LSCINT.P

 Peak Number 26 9H-Fluoren-9-one Concentration Rank 42

R.T.	EstConc	Area	Relative to ISTD	R.T.
16.83	2.88 ng/ul	284788	Phenanthrene-d10	17.18

Hit#	of	Tentative ID	MW	MolForm	CAS#	Qual
1	5	9H-Fluoren-9-one	180	C13H8O	000486-25-9	64
2		Acridine, 9,10-dihydro-	181	C13H11N	000092-81-9	60
3		Phenanthrene, 9,10-dihydro-	180	C14H12	000776-35-2	53
4		Acridine, 9,10-dihydro-	181	C13H11N	000092-81-9	53
5		2-Benzothiophen-4(5H)-one, 6,7-d...	180	C10H12OS	1000338-11-9	47



Data Path : Z:\HPCHEM1\BNA M\DATA\BM052516\
 Data File : BM005648.D
 Acq On : 25 May 2016 21:51
 Operator : UM/SJ
 Sample : H3086-18
 Misc :
 ALS Vial : 7 Sample Multiplier: 1

Instrument :
 BNA_M
 ClientSampleID :
 JHGL2

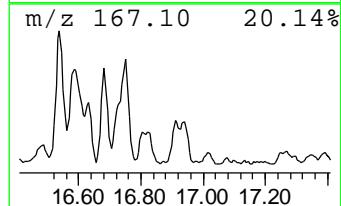
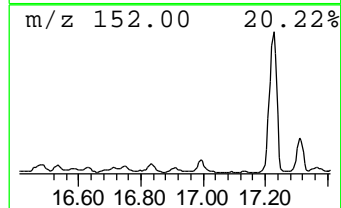
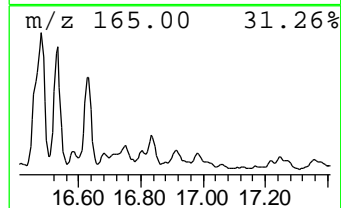
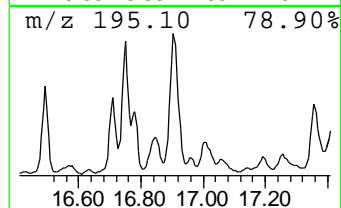
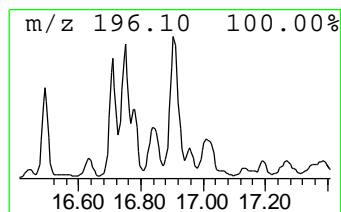
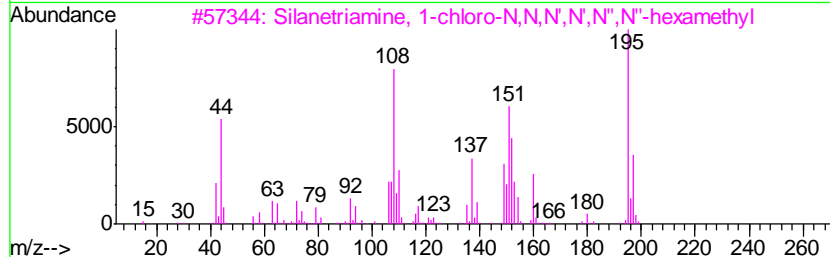
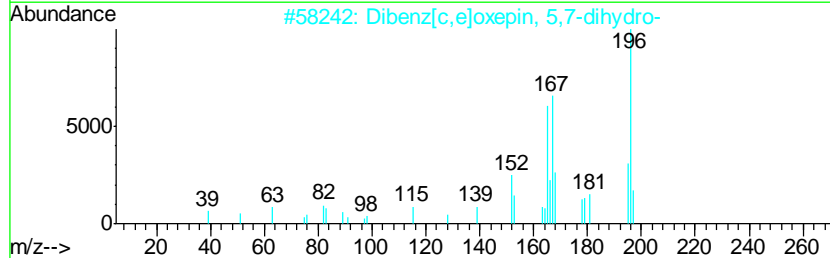
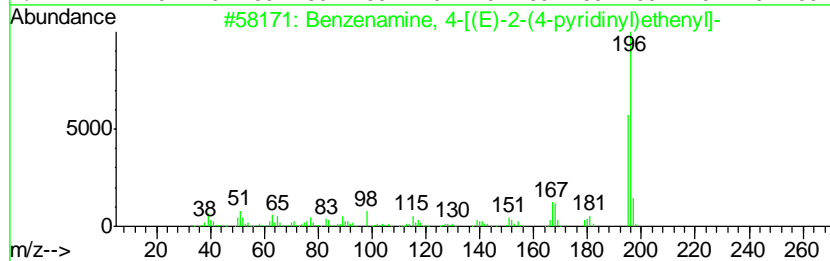
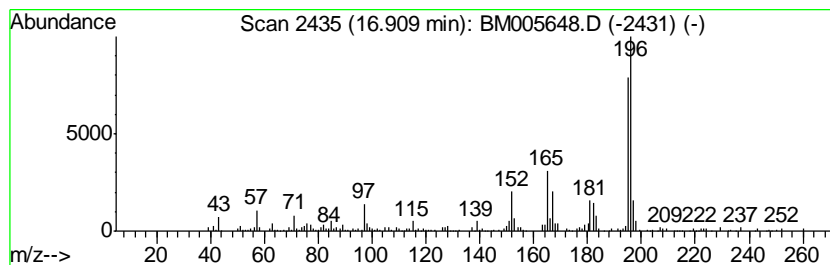
Quant Method : Z:\HPCHEM1\BNA M\METHODS\SOM02.2-EPA-BM052016.M
 Quant Title : SVOA CALIBRATION

TIC Library : C:\DATABASE\NIST11.L
 TIC Integration Parameters: LSCINT.P

 Peak Number 27 Benzenamine, 4-[(E)-2-(4-py... Concentration Rank 27

R.T.	EstConc	Area	Relative to ISTD	R.T.
16.91	4.20 ng/ul	414933	Phenanthrene-d10	17.18

Hit#	of	Tentative ID	MW	MolForm	CAS#	Qual
1	5	Benzenamine, 4-[(E)-2-(4-pyridin...	196	C13H12N2	1000351-61-4	62
2		Dibenz[c,e]oxepin, 5,7-dihydro-	196	C14H12O	001136-22-7	46
3		Silanetriamine, 1-chloro-N,N,N',...	195	C6H18ClN3Si	013307-05-6	38
4		Benzoic acid, 3,4-dimethoxy-, me...	196	C10H12O4	002150-38-1	35
5		2,6-Dimethoxyphenol, tert-butyld...	268	C14H24O3Si	1000333-38-2	35



Data Path : Z:\HPCHEM1\BNA M\DATA\BM052516\
 Data File : BM005648.D
 Acq On : 25 May 2016 21:51
 Operator : UM/SJ
 Sample : H3086-18
 Misc :
 ALS Vial : 7 Sample Multiplier: 1

Instrument :
 BNA_M
 ClientSampled :
 JHGL2

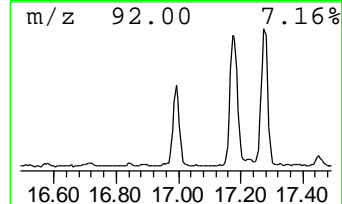
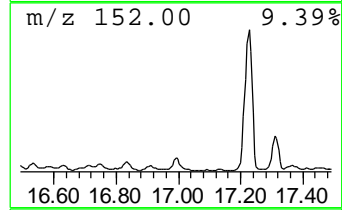
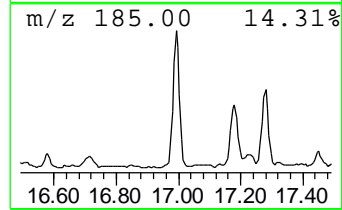
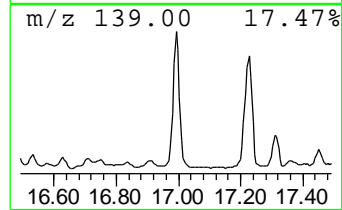
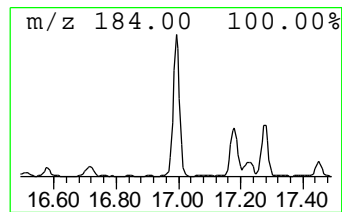
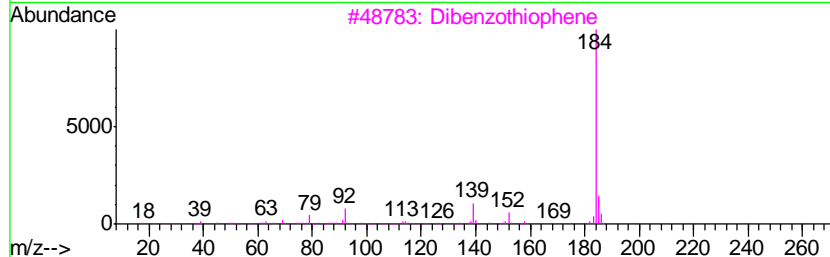
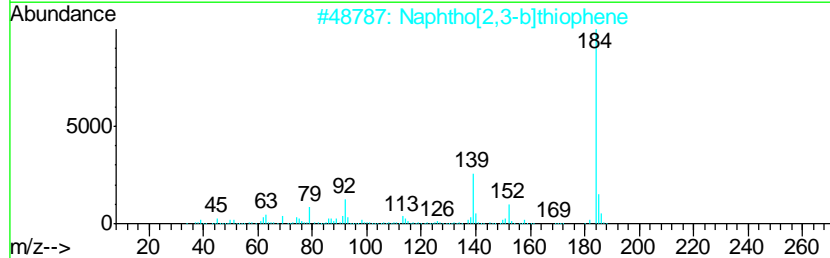
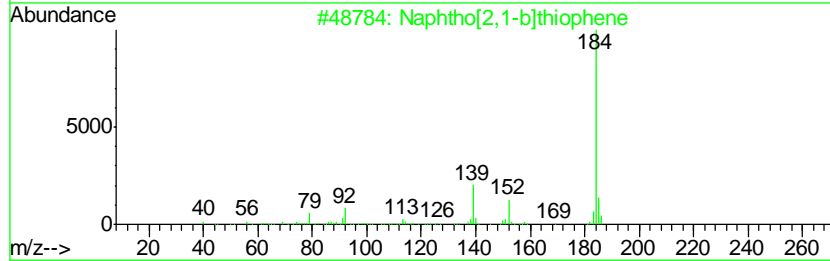
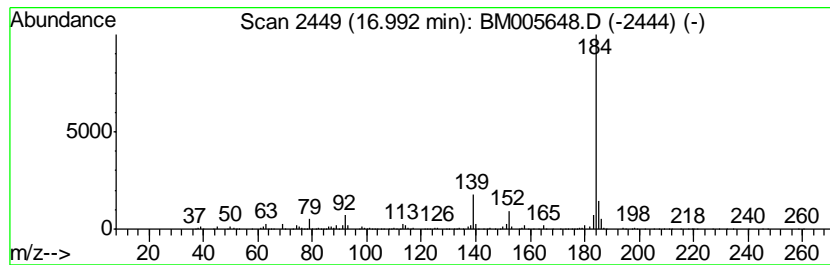
Quant Method : Z:\HPCHEM1\BNA M\METHODS\SOM02.2-EPA-BM052016.M
 Quant Title : SVOA CALIBRATION

TIC Library : C:\DATABASE\NIST11.L
 TIC Integration Parameters: LSCINT.P

 Peak Number 28 Naphtho[2,1-b]thiophene Concentration Rank 9

R.T.	EstConc	Area	Relative to ISTD	R.T.
16.99	9.62 ng/ul	949802	Phenanthrene-d10	17.18

Hit#	of	Tentative ID	MW	MolForm	CAS#	Qual
1	5	Naphtho[2,1-b]thiophene	184	C12H8S	000233-02-3	96
2		Naphtho[2,3-b]thiophene	184	C12H8S	000268-77-9	95
3		Dibenzothiophene	184	C12H8S	000132-65-0	95
4		Naphtho[1,2-b]thiophene	184	C12H8S	000234-41-3	94
5		Dibenzothiophene	184	C12H8S	000132-65-0	94



Data Path : Z:\HPCHEM1\BNA M\DATA\BM052516\
 Data File : BM005648.D
 Acq On : 25 May 2016 21:51
 Operator : UM/SJ
 Sample : H3086-18
 Misc :
 ALS Vial : 7 Sample Multiplier: 1

Instrument :
 BNA_M
 ClientSampleID :
 JHGL2

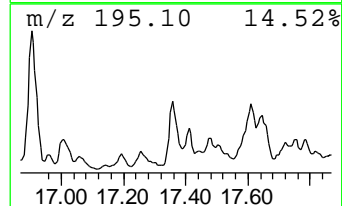
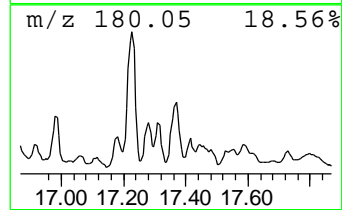
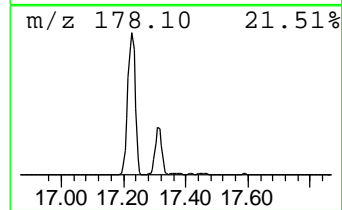
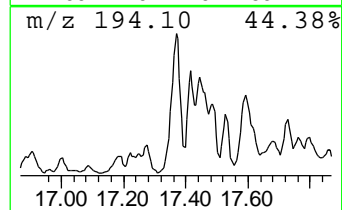
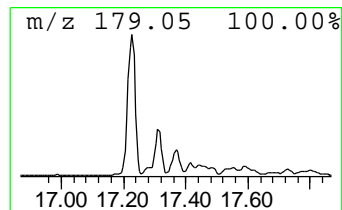
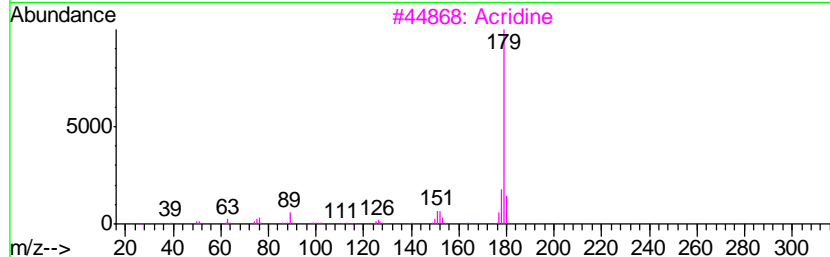
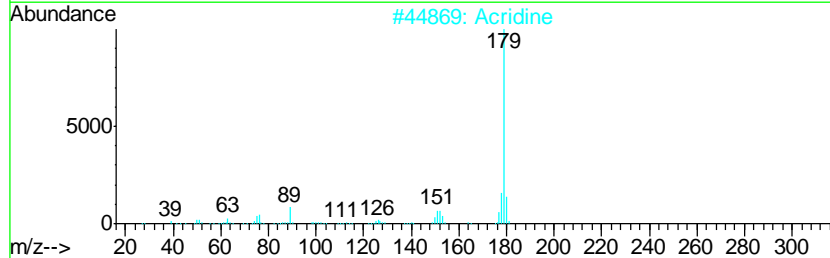
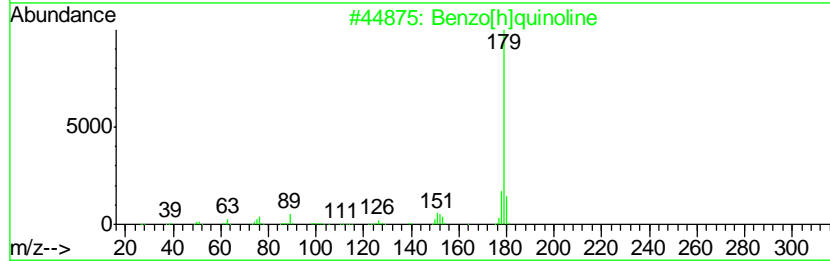
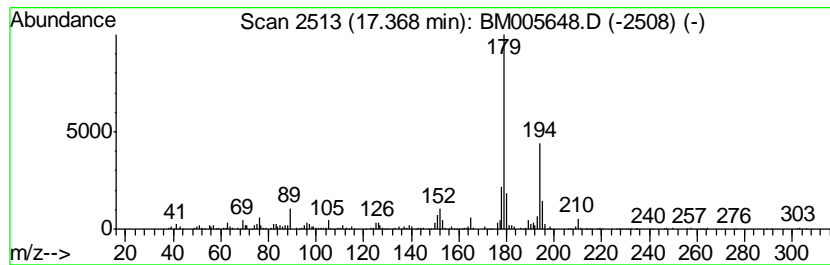
Quant Method : Z:\HPCHEM1\BNA M\METHODS\SOM02.2-EPA-BM052016.M
 Quant Title : SVOA CALIBRATION

TIC Library : C:\DATABASE\NIST11.L
 TIC Integration Parameters: LSCINT.P

 Peak Number 29 Benzo[h]quinoline Concentration Rank 26

R.T.	EstConc	Area	Relative to ISTD	R.T.
17.37	4.28 ng/ul	423020	Phenanthrene-d10	17.18

Hit#	of	Tentative ID	MW	MolForm	CAS#	Qual
1	5	Benzo[h]quinoline	179	C13H9N	000230-27-3	93
2		Acridine	179	C13H9N	000260-94-6	83
3		Acridine	179	C13H9N	000260-94-6	83
4		9H-Fluorene, 9,9-dimethyl-	194	C15H14	004569-45-3	74
5		Anthracene, 9,10-dihydro-2-methyl-	194	C15H14	000948-67-4	72



Data Path : Z:\HPCHEM1\BNA M\DATA\BM052516\
 Data File : BM005648.D
 Acq On : 25 May 2016 21:51
 Operator : UM/SJ
 Sample : H3086-18
 Misc :
 ALS Vial : 7 Sample Multiplier: 1

Instrument :
 BNA_M
 ClientSampleID :
 JHGL2

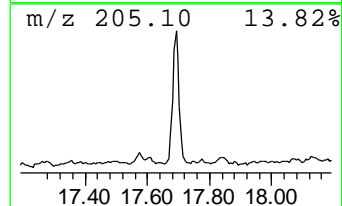
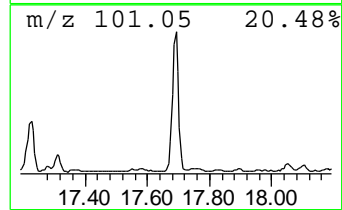
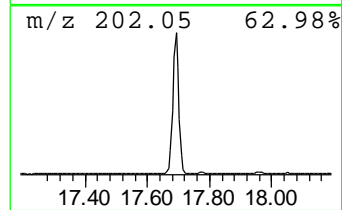
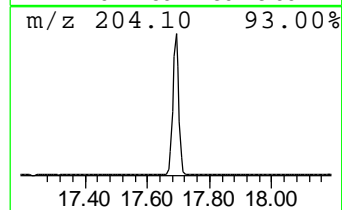
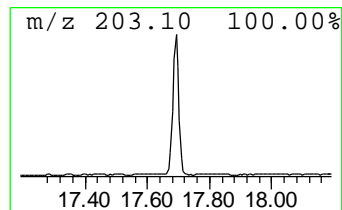
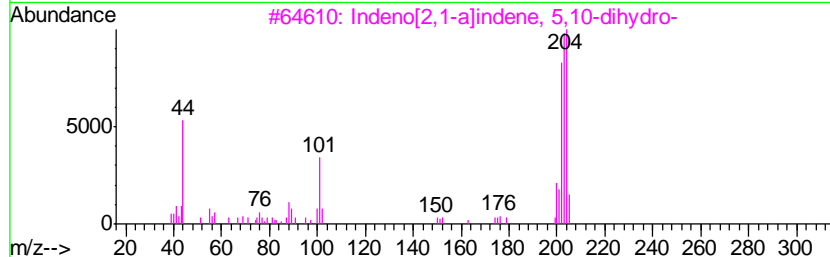
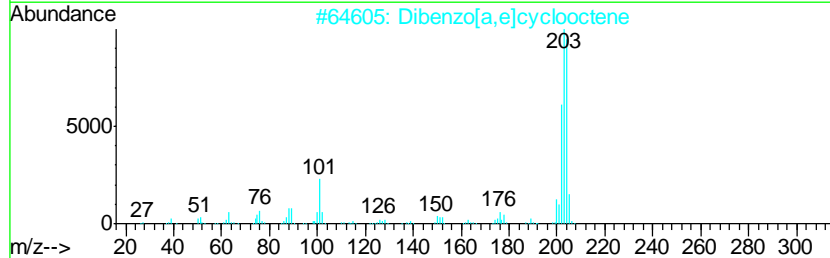
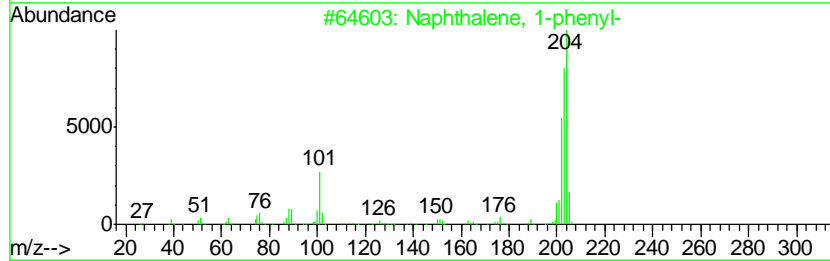
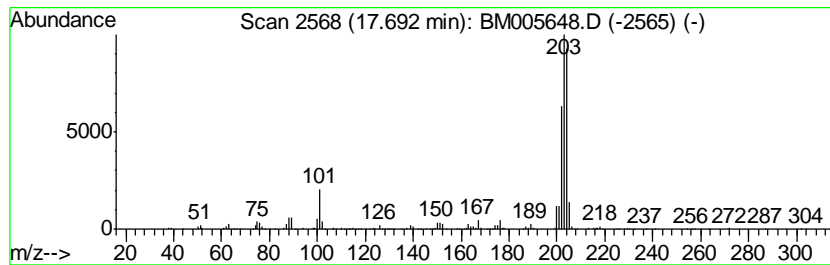
Quant Method : Z:\HPCHEM1\BNA M\METHODS\SOM02.2-EPA-BM052016.M
 Quant Title : SVOA CALIBRATION

TIC Library : C:\DATABASE\NIST11.L
 TIC Integration Parameters: LSCINT.P

 Peak Number 30 Naphthalene, 1-phenyl- Concentration Rank 18

R.T.	EstConc	Area	Relative to ISTD	R.T.
17.69	5.14 ng/ul	507337	Phenanthrene-d10	17.18

Hit#	of	Tentative ID	MW	MolForm	CAS#	Qual
1	5	Naphthalene, 1-phenyl-	204	C16H12	000605-02-7	95
2		Dibenzo[a,e]cyclooctene	204	C16H12	000262-89-5	93
3		Indeno[2,1-a]indene, 5,10-dihydro-	204	C16H12	006543-29-9	89
4		1H-Indene, 1-(phenylmethylene)-	204	C16H12	005394-86-5	76
5		Anthracene, 9-ethenyl-	204	C16H12	002444-68-0	76



Data Path : Z:\HPCHEM1\BNA M\DATA\BM052516\
 Data File : BM005648.D
 Acq On : 25 May 2016 21:51
 Operator : UM/SJ
 Sample : H3086-18
 Misc :
 ALS Vial : 7 Sample Multiplier: 1

Instrument :
 BNA_M
 ClientSampleId :
 JHGL2

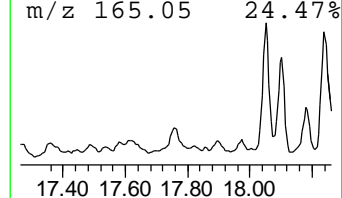
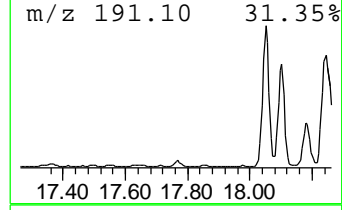
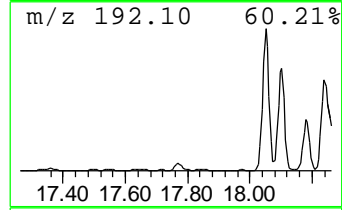
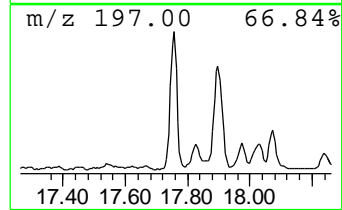
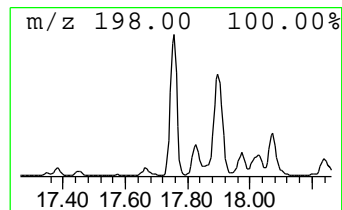
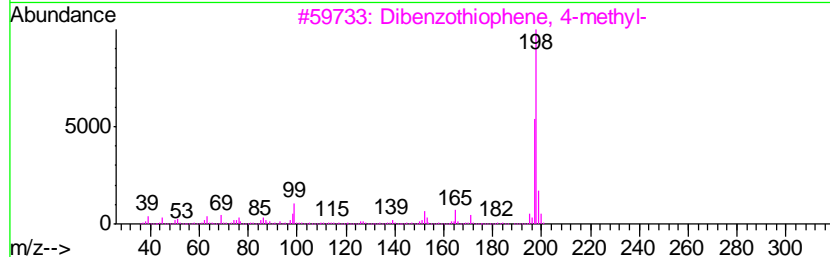
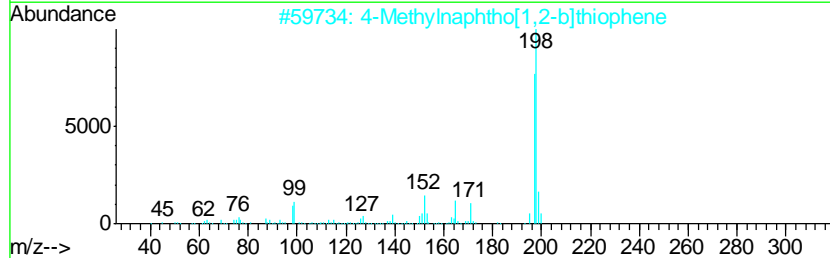
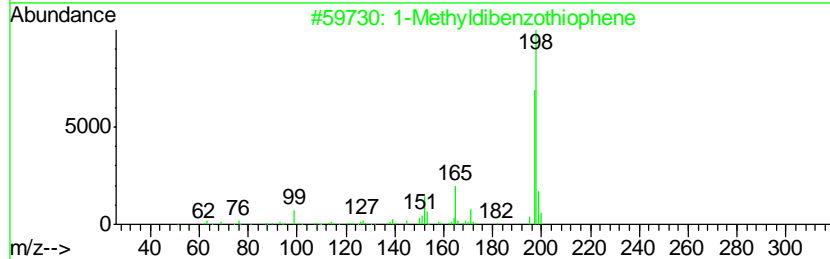
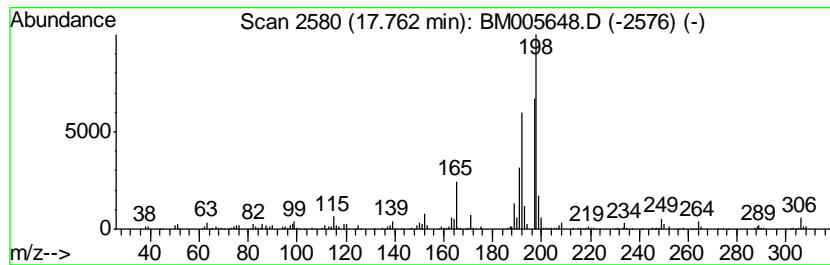
Quant Method : Z:\HPCHEM1\BNA M\METHODS\SOM02.2-EPA-BM052016.M
 Quant Title : SVOA CALIBRATION

TIC Library : C:\DATABASE\NIST11.L
 TIC Integration Parameters: LSCINT.P

 Peak Number 31 1-Methyldibenzothiophene Concentration Rank 30

R.T.	EstConc	Area	Relative to ISTD	R.T.
17.76	3.88 ng/ul	382927	Phenanthrene-d10	17.18

Hit#	of	Tentative ID	MW	MolForm	CAS#	Qual
1	5	1-Methyldibenzothiophene	198	C13H10S	031317-07-4	89
2		4-Methylnaphtho[1,2-b]thiophene	198	C13H10S	067388-11-8	68
3		Dibenzothiophene, 4-methyl-	198	C13H10S	007372-88-5	64
4		Dibenzothiophene, 3-methyl-	198	C13H10S	016587-52-3	64
5		Benzenamine, 4,4'-methylenebis-	198	C13H14N2	000101-77-9	53



Data Path : Z:\HPCHEM1\BNA_M\DATA\BM052516\
 Data File : BM005648.D
 Acq On : 25 May 2016 21:51
 Operator : UM/SJ
 Sample : H3086-18
 Misc :
 ALS Vial : 7 Sample Multiplier: 1

Instrument :
 BNA_M
 ClientSampleId :
 JHGL2

Quant Method : Z:\HPCHEM1\BNA_M\METHODS\SOM02.2-EPA-BM052016.M
 Quant Title : SVOA CALIBRATION

TIC Library : C:\DATABASE\NIST11.L
 TIC Integration Parameters: LSCINT.P

TIC Top Hit name	RT	EstConc	Units	Response	--Internal Standard--			
					#	RT	Resp	Conc
1-Propyne, 3-phenyl-	8.33	5.5	ng/ul	205063	1	7.79	746683	20.0
(DEL) Alkane: Cyc...	8.88	4.7	ng/ul	175525	1	7.79	746683	20.0
(DEL) Alkane: Bra...	9.49	3.4	ng/ul	237701	2	10.58	1381400	20.0
(DEL) Alkane: Str...	11.59	2.8	ng/ul	191624	2	10.58	1381400	20.0
Naphthalene, 1-me...	12.46	7.1	ng/ul	489504	2	10.58	1381400	20.0
(DEL) Alkane: Str...	12.95	3.5	ng/ul	334396	3	14.43	1923920	20.0
1H-Indene, 2,3-di...	13.35	2.8	ng/ul	268986	3	14.43	1923920	20.0
Naphthalene, 2-et...	13.48	2.1	ng/ul	201827	3	14.43	1923920	20.0
Naphthalene, 1,6-...	13.60	3.4	ng/ul	331141	3	14.43	1923920	20.0
Naphthalene, 1,3-...	13.75	4.4	ng/ul	427560	3	14.43	1923920	20.0
Naphthalene, 2,3-...	13.99	3.5	ng/ul	331467	3	14.43	1923920	20.0
Naphthalene, 1,6,...	14.90	3.2	ng/ul	307370	3	14.43	1923920	20.0
Naphthalene, 1,4,...	15.05	5.6	ng/ul	542786	3	14.43	1923920	20.0
1H-Phenalene	15.30	2.3	ng/ul	219213	3	14.43	1923920	20.0
Diphenylmethane	15.64	2.2	ng/ul	212963	3	14.43	1923920	20.0
[1,1'-Biphenyl]-4...	15.77	5.2	ng/ul	504119	3	14.43	1923920	20.0
(DEL) Alkane: Str...	16.16	7.5	ng/ul	738877	4	17.18	1975240	20.0
Chamazulene	16.29	2.0	ng/ul	202286	4	17.18	1975240	20.0
9H-Fluorene, 2-me...	16.48	9.2	ng/ul	909670	4	17.18	1975240	20.0
9H-Fluoren-9-one	16.83	2.9	ng/ul	284788	4	17.18	1975240	20.0
Benzenamine, 4-[(...]	16.91	4.2	ng/ul	414933	4	17.18	1975240	20.0
Naphtho[2,1-b]thi...	16.99	9.6	ng/ul	949802	4	17.18	1975240	20.0
Benzo[h]quinoline	17.37	4.3	ng/ul	423020	4	17.18	1975240	20.0
Naphthalene, 1-ph...	17.69	5.1	ng/ul	507337	4	17.18	1975240	20.0
1-Methyldibenzoth...	17.76	3.9	ng/ul	382927	4	17.18	1975240	20.0