

Data Path : Z:\HPCHEM1\BNA M\DATA\BM052717\
 Data File : BM010295.D
 Acq On : 28 May 2017 02:56
 Operator : SJ/MA
 Sample : I3162-14
 Misc :
 ALS Vial : 27 Sample Multiplier: 1

Instrument :
 BNA_M
 ClientSampleId :
 JHSF0

Quant Time: May 29 06:53:56 2017
 Quant Method : Z:\HPCHEM1\BNA M\METHODS\SOM-EPA-BM052717.M
 Quant Title : SVOA CALIBRATION
 QLast Update : Mon May 29 06:51:20 2017
 Response via : Initial Calibration

Internal Standards	R.T.	QIon	Response	Conc	Units	Dev(Min)
1) 1,4-Dichlorobenzene-d4	7.93	152	409350	20.00	ng/ul	0.00
18) Naphthalene-d8	10.73	136	1481170	20.00	ng/ul	0.00
35) Acenaphthene-d10	14.56	164	901756	20.00	ng/ul	0.00
61) Phenanthrene-d10	17.31	188	2190102	20.00	ng/ul	0.00
75) Chrysene-d12	21.47	240	3078069	20.00	ng/ul	0.00
83) Perylene-d12	23.82	264	3230189	20.00	ng/ul	0.00

System Monitoring Compounds

3) 1,4-Dioxane-d8	3.39	96	32456	3.25	ng/uL	0.00
5) Phenol-d5	7.12	99	590573	19.04	ng/ul	0.00
7) Bis-(2-Chloroethyl)ether-d	7.27	67	344083	19.74	ng/ul	0.00
9) 2-Chlorophenol-d4	7.47	132	488375	19.75	ng/ul	0.00
13) 4-Methylphenol-d8	8.65	113	488717	19.53	ng/ul	0.00
19) Nitrobenzene-d5	9.12	128	232503	21.43	ng/ul	0.00
22) 2-Nitrophenol-d4	9.83	143	263494	20.97	ng/ul	0.00
26) 2,4-Dichlorophenol-d3	10.36	165	518828	20.09	ng/ul	0.00
29) 4-Chloroaniline-d4	10.90	131	210814	8.46	ng/ul	0.00
43) Dimethylphthalate-d6	13.97	166	1656437	22.11	ng/ul	0.00
46) Acenaphthylene-d8	14.26	160	1944322	22.25	ng/ul	0.00
51) 4-Nitrophenol-d4	14.80	143	194957	17.39	ng/ul	0.00
57) Fluorene-d10	15.55	176	1458946	22.15	ng/ul	0.00
62) 4,6-Dinitro-2-methylphenol	15.67	200	264713	17.06	ng/ul	0.00
70) Anthracene-d10	17.40	188	2272085	21.32	ng/ul	0.00
76) Pyrene-d10	19.69	212	2953821	23.21	ng/ul	0.00
87) Benzo(a)pyrene-d12	23.67	264	3310958	22.02	ng/ul	0.00

Target Compounds

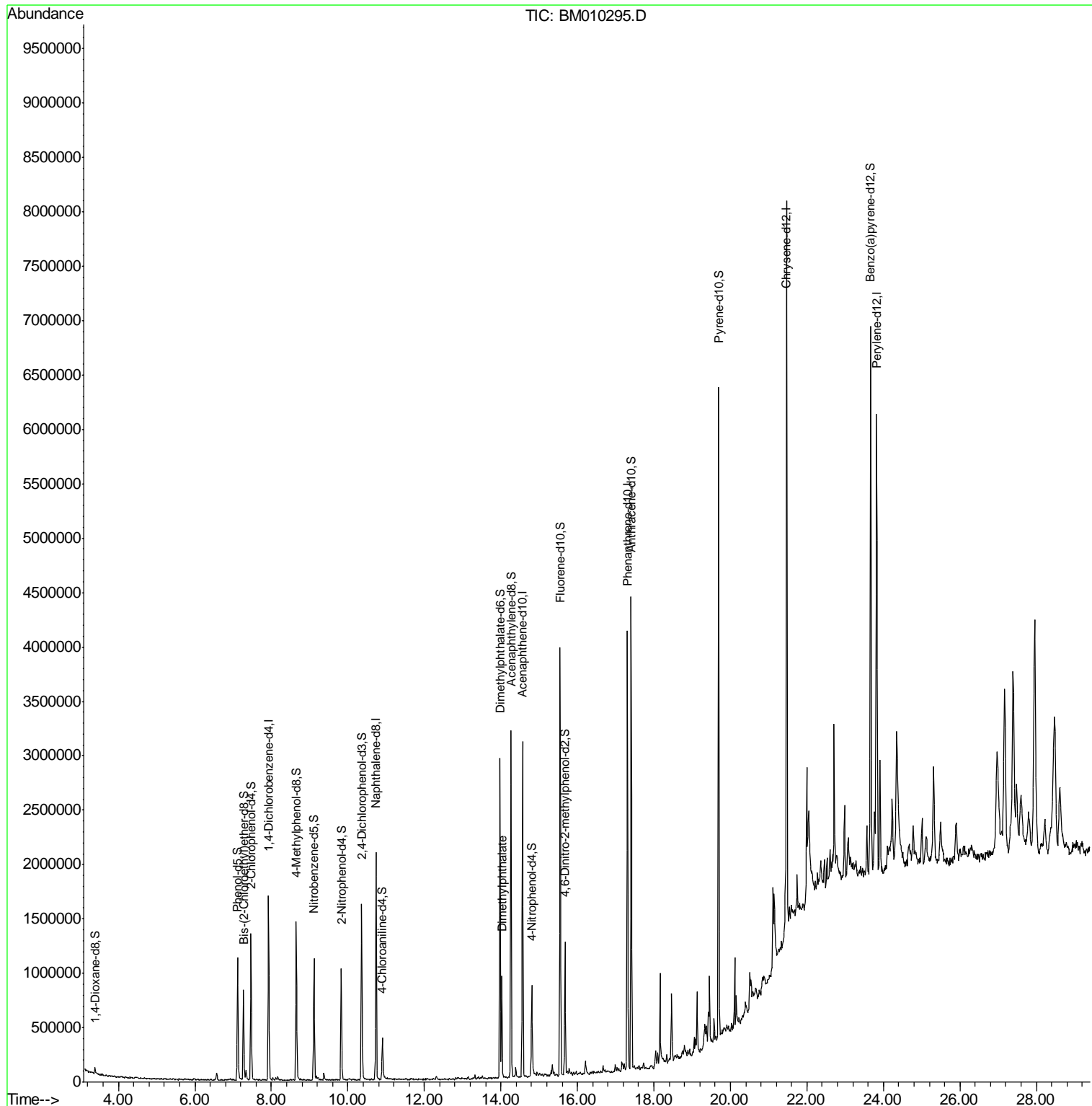
Target Compounds	R.T.	QIon	Response	Conc	Units	Ovalue
44) Dimethylphthalate	14.02	163	507449	6.89	ng/ul	99

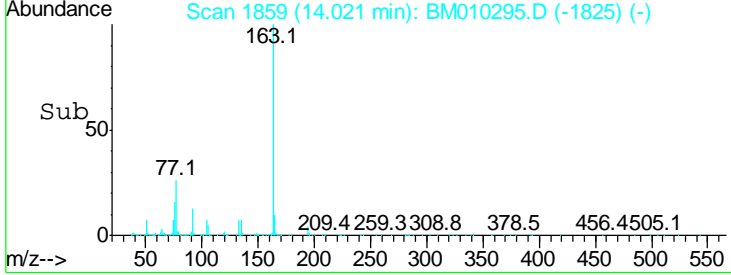
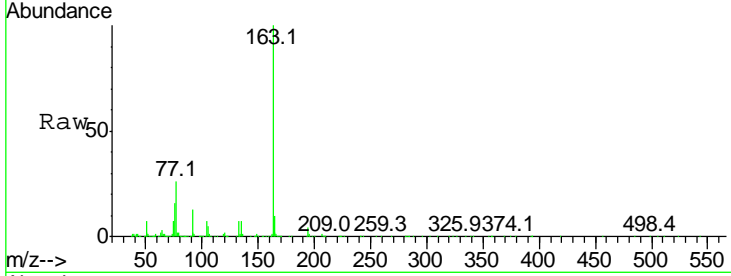
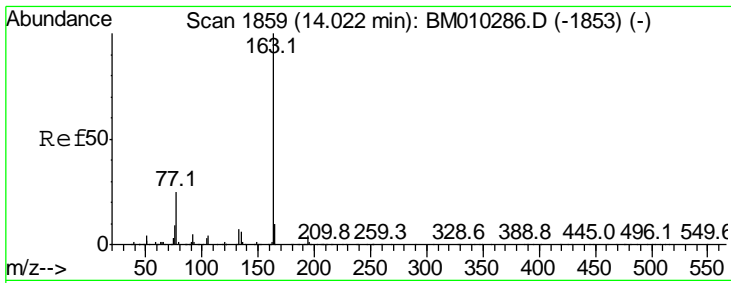
(#) = qualifier out of range (m) = manual integration (+) = signals summed

Data Path : Z:\HPCHEM1\BNA M\DATA\BM052717\
 Data File : BM010295.D
 Acq On : 28 May 2017 02:56
 Operator : SJ/MA
 Sample : I3162-14
 Misc :
 ALS Vial : 27 Sample Multiplier: 1

Instrument :
 BNA_M
 ClientSampleId :
 JHSF0

Quant Time: May 29 06:53:56 2017
 Quant Method : Z:\HPCHEM1\BNA M\METHODS\SOM-EPA-BM052717.M
 Quant Title : SVOA CALIBRATION
 QLast Update : Mon May 29 06:51:20 2017
 Response via : Initial Calibration





#44
 Dimethylphthalate
 Concen: 6.89 ng/ul
 RT: 14.02 min Scan# 1859
 Delta R.T. -0.00 min
 Lab File: BM010295.D
 Acq: 28 May 2017 02:56

Instrument :
 BNA_M
 ClientSampled :
 JHSFO

Tot Ion	Ratio	Lower	Upper
163	100		
194	4.1	3.5	5.3
164	10.0	8.2	12.4

