

Data Path : Z:\HPCHEM1\BNA_M\DATA\BM053015\
 Data File : BM001473.D
 Acq On : 30 May 2015 13:58
 Operator : TP/IZ
 Sample : G2411-02RE
 Misc :
 ALS Vial : 4 Sample Multiplier: 1

Instrument :
 BNA_M
 ClientSampled :
 BCRB5RE

Manual Integrations
 APPROVED

apatel
 6/1/2015 4:29:07 PM

Quant Time: May 31 03:40:57 2015
 Quant Method : Z:\HPCHEM1\BNA_M\METHODS\SOM02.2-EPA-BM052915.M
 Quant Title : SVOA CALIBRATION
 QLast Update : Sun May 31 02:16:14 2015
 Response via : Initial Calibration

Internal Standards	R.T.	QIon	Response	Conc	Units	Dev(Min)
1) 1,4-Dichlorobenzene-d4	7.37	152	181236	20.00	ng/ul	0.00
18) Naphthalene-d8	10.16	136	730110	20.00	ng/ul	0.00
35) Acenaphthene-d10	14.06	164	396487	20.00	ng/ul	0.00
61) Phenanthrene-d10	16.82	188	803534	20.00	ng/ul	0.00
75) Chrysene-d12	21.02	240	814656	20.00	ng/ul	0.00
83) Perylene-d12	23.11	264	729730	20.00	ng/ul	0.00

System Monitoring Compounds

3) 1,4-Dioxane-d8	2.80	96	14058	3.87	ng/uL	0.00
5) Phenol-d5	6.57	99	352193	26.20	ng/ul	0.00
7) Bis-(2-Chloroethyl)ether-d	6.72	67	220294	26.34	ng/ul	0.00
9) 2-Chlorophenol-d4	6.91	132	307458	28.09	ng/ul	0.00
13) 4-Methylphenol-d8	8.11	113	284817	25.17	ng/ul	0.00
19) Nitrobenzene-d5	8.53	128	145375	30.58	ng/ul	0.00
22) 2-Nitrophenol-d4	9.25	143	171565	31.66	ng/ul	0.00
26) 2,4-Dichlorophenol-d3	9.79	165	302743	27.91	ng/ul	0.00
29) 4-Chloroaniline-d4	10.31	131	105664	8.29	ng/ul	0.00
43) Dimethylphthalate-d6	13.48	166	811366	29.18	ng/ul	0.00
46) Acenaphthylene-d8	13.75	160	1126843	29.76	ng/ul	0.00
51) 4-Nitrophenol-d4	14.30	143	143317	25.28	ng/ul	0.00
57) Fluorene-d10	15.06	176	764455	27.56	ng/ul	0.00
62) 4,6-Dinitro-2-methylphenol	15.20	200	119370	24.14	ng/ul	0.00
70) Anthracene-d10	16.91	188	1069457	28.87	ng/ul	0.00
76) Pyrene-d10	19.22	212	1163843	32.85	ng/ul	0.00
87) Benzo(a)pyrene-d12	22.98	264	961436	29.80	ng/ul	0.00

Target Compounds

Target Compounds	R.T.	QIon	Response	Conc	Units	Qvalue
44) Dimethylphthalate	13.53	163	431514	13.75	ng/ul	100
69) Phenanthrene	16.86	178	147459	3.30	ng/ul	98
74) Fluoranthene	18.88	202	426367	7.87	ng/ul	99
77) Pyrene	19.25	202	345211	7.09	ng/ul	96
80) Benzo(a)anthracene	21.00	228	123088	2.59	ng/ul	95
81) Bis(2-ethylhexyl)phthalate	20.96	149	182535	6.01	ng/ul	99
82) Chrysene	21.06	228	169794	3.79	ng/ul	98
85) Benzo(b)fluoranthene	22.50	252	220712	4.94	ng/ul#	88
86) Benzo(k)fluoranthene	22.53	252	53563m	1.25	ng/ul	
88) Benzo(a)pyrene	23.02	252	118092	2.82	ng/ul	97
89) Indeno(1,2,3-cd)pyrene	25.16	276	87527	1.98	ng/ul	98
91) Benzo(g,h,i)perylene	25.79	276	84856	2.33	ng/ul	94

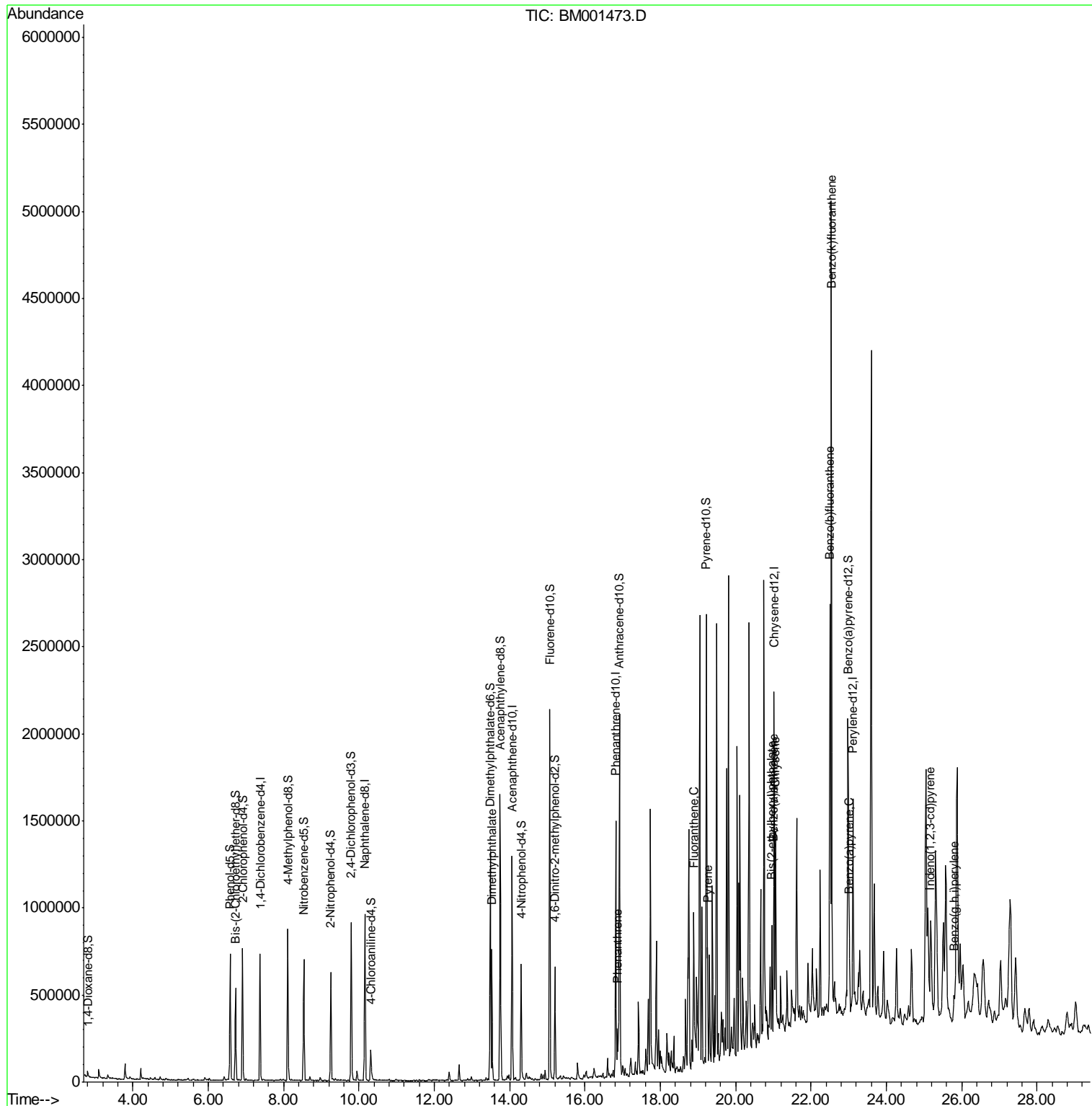
(#) = qualifier out of range (m) = manual integration (+) = signals summed

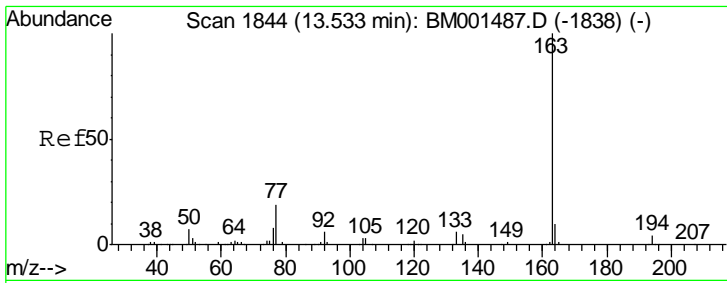
Data Path : Z:\HPCHEM1\BNA_M\DATA\BM053015\
 Data File : BM001473.D
 Acq On : 30 May 2015 13:58
 Operator : TP/IZ
 Sample : G2411-02RE
 Misc :
 ALS Vial : 4 Sample Multiplier: 1

Instrument :
 BNA_M
 Client Sampled :
 BCRB5RE

Manual Integrations
 APPROVED
 apatel
 6/1/2015 4:29:07 PM

Quant Time: May 31 03:40:57 2015
 Quant Method : Z:\HPCHEM1\BNA_M\METHODS\SOM02.2-EPA-BM052915.M
 Quant Title : SVOA CALIBRATION
 QLast Update : Sun May 31 02:16:14 2015
 Response via : Initial Calibration



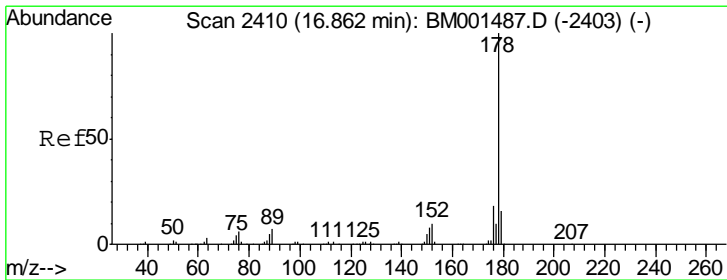
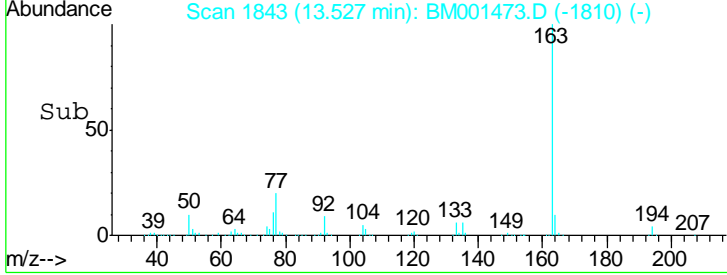
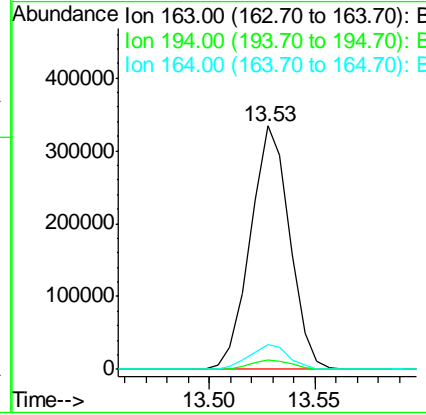
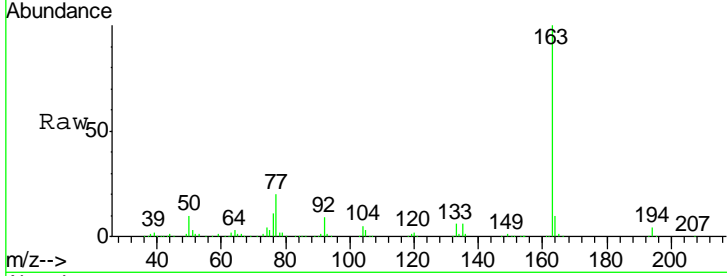


#44
 Dimethylphthalate
 Concen: 13.75 ng/ul
 RT: 13.53 min Scan# 1843
 Delta R.T. -0.01 min
 Lab File: BM001473.D
 Acq: 30 May 2015 13:58

Instrument :
 BNA_M
 ClientSampled :
 BCRB5RE

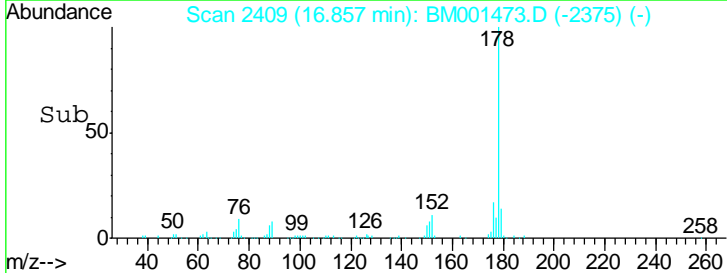
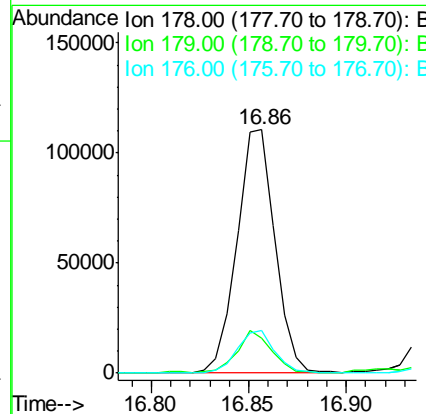
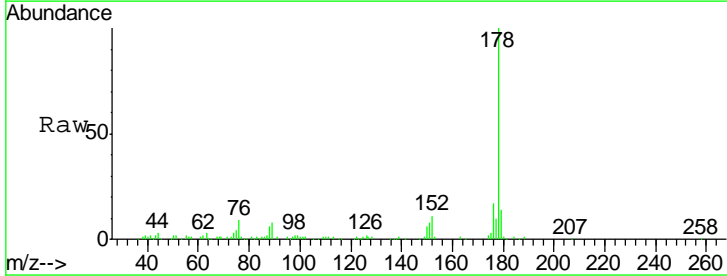
Tgt Ion	Resp	Lower	Upper
163	100		
194	3.9	3.0	4.6
164	10.1	8.2	12.4

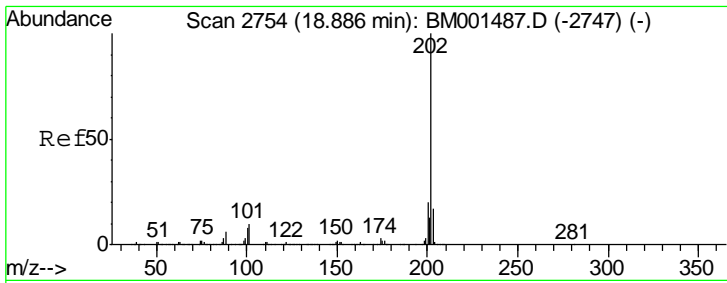
Manual Integrations
 APPROVED
 apatel
 6/1/2015 4:29:07 PM



#69
 Phenanthrene
 Concen: 3.30 ng/ul
 RT: 16.86 min Scan# 2409
 Delta R.T. 0.00 min
 Lab File: BM001473.D
 Acq: 30 May 2015 13:58

Tgt Ion	Resp	Lower	Upper
178	100		
179	14.3	11.9	17.9
176	17.5	15.0	22.4



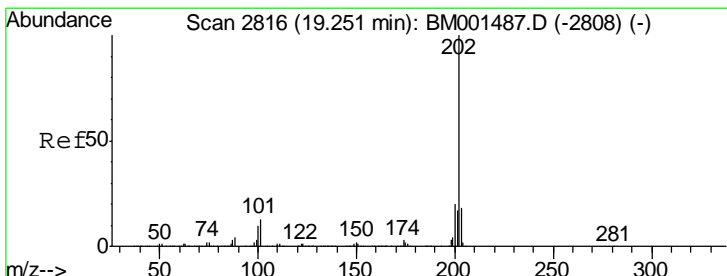
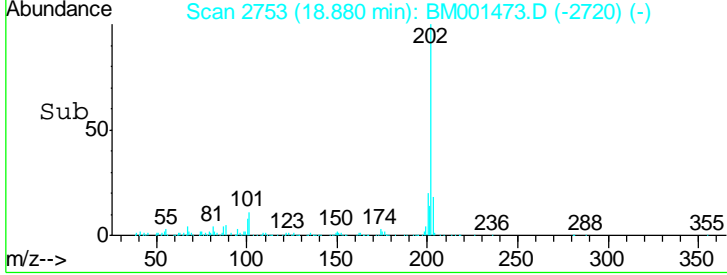
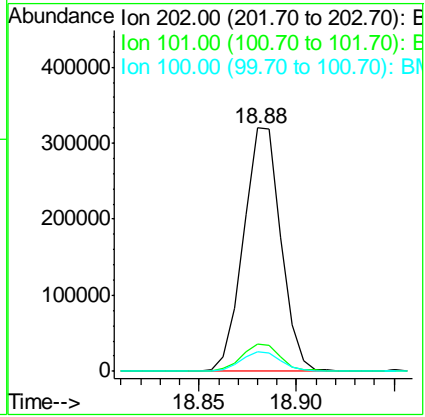
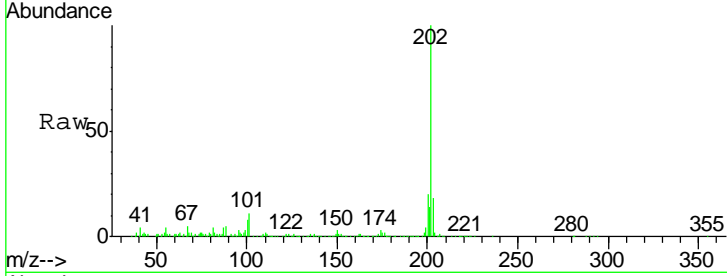


#74
 Fluoranthene
 Concen: 7.87 ng/ul
 RT: 18.88 min Scan# 2753
 Delta R.T. -0.01 min
 Lab File: BM001473.D
 Acq: 30 May 2015 13:58

Instrument :
 BNA_M
ClientSampled :
 BCRB5RE

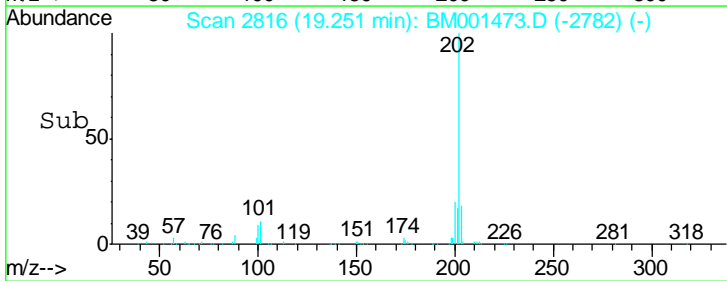
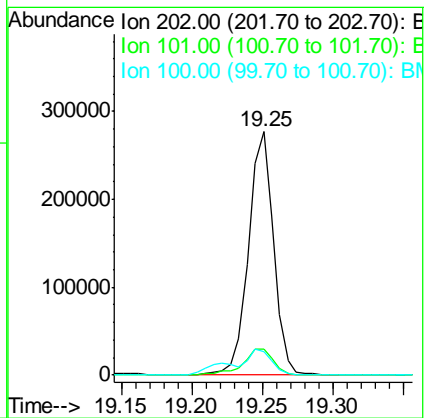
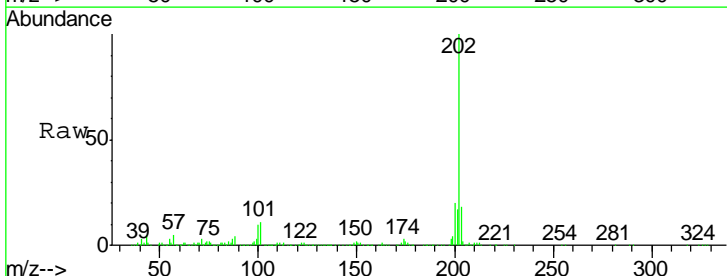
Tgt Ion	Resp	Lower	Upper
202	100		
101	11.1	8.6	12.8
100	8.0	6.5	9.7

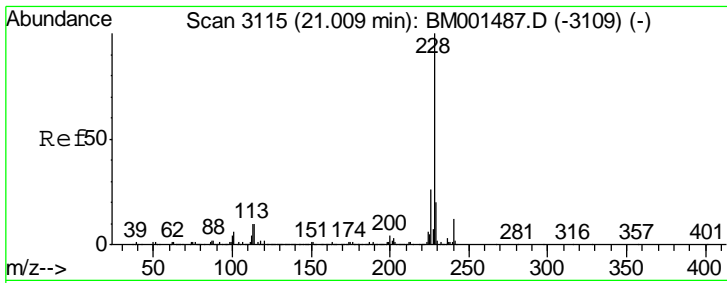
Manual Integrations
APPROVED
 apatel
 6/1/2015 4:29:07 PM



#77
 Pyrene
 Concen: 7.09 ng/ul
 RT: 19.25 min Scan# 2816
 Delta R.T. 0.00 min
 Lab File: BM001473.D
 Acq: 30 May 2015 13:58

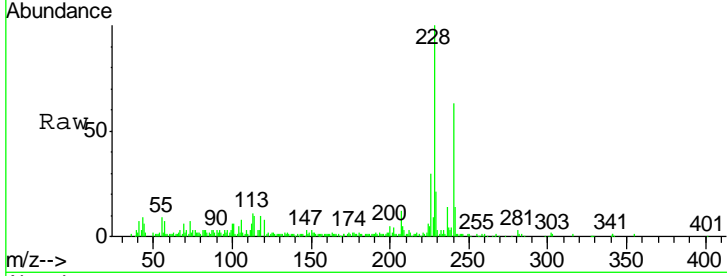
Tgt Ion	Resp	Lower	Upper
202	100		
101	10.8	10.3	15.5
100	9.7	8.6	12.8





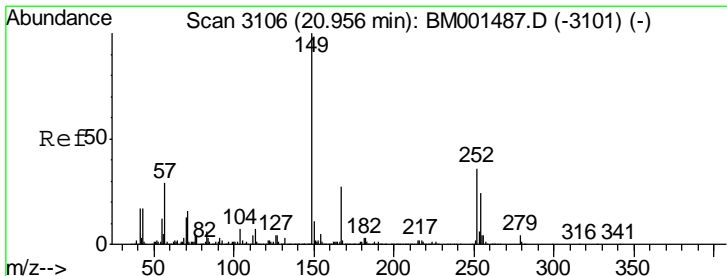
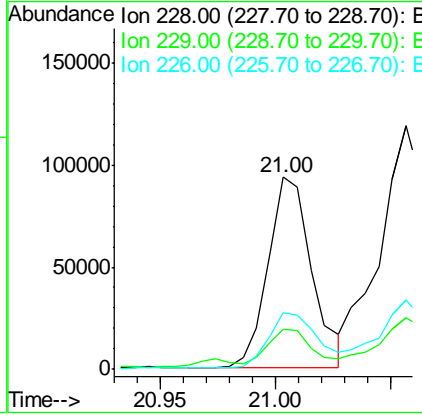
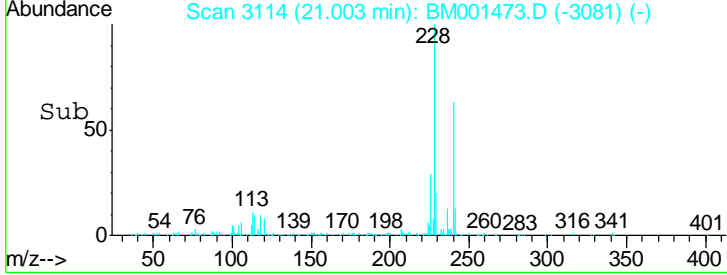
#80
 Benzo(a)anthracene
 Concen: 2.59 ng/ul
 RT: 21.00 min Scan# 3114
 Delta R.T. -0.01 min
 Lab File: BM001473.D
 Acq: 30 May 2015 13:58

Instrument :
 BNA_M
ClientSampled :
 BCRB5RE

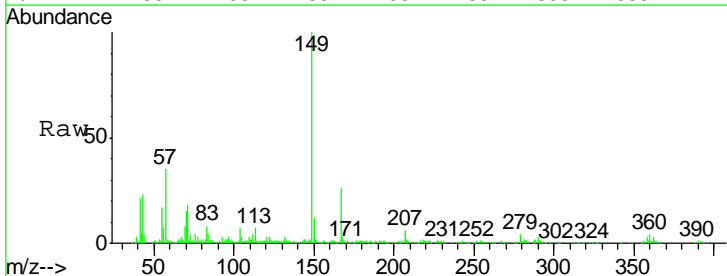


Tgt Ion	Resp	Lower	Upper
228	100		
229	20.7	15.8	23.8
226	29.8	20.6	30.8

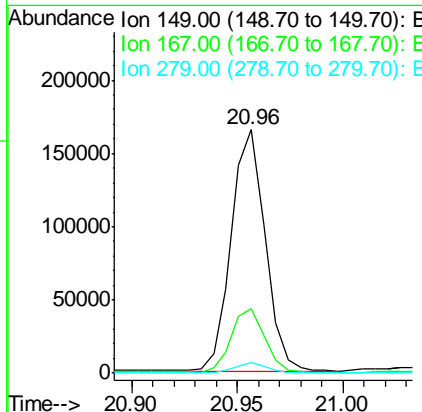
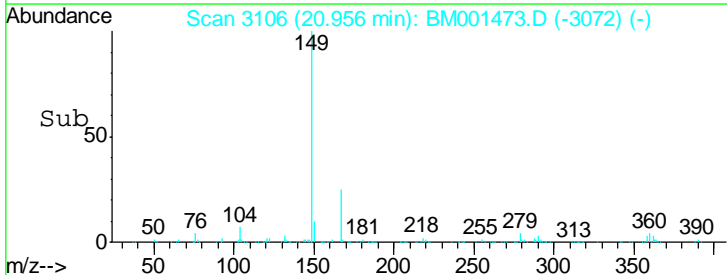
Manual Integrations
APPROVED
 apatel
 6/1/2015 4:29:07 PM

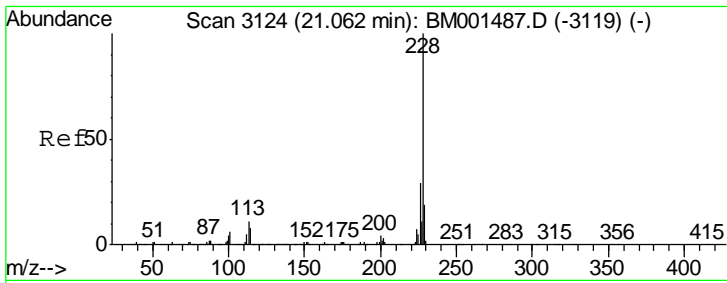


#81
 Bis(2-ethylhexyl)phthalate
 Concen: 6.01 ng/ul
 RT: 20.96 min Scan# 3106
 Delta R.T. 0.00 min
 Lab File: BM001473.D
 Acq: 30 May 2015 13:58



Tgt Ion	Resp	Lower	Upper
149	100		
167	26.2	21.2	31.8
279	4.3	3.1	4.7



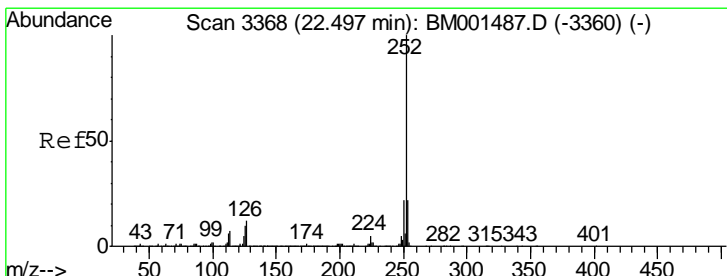
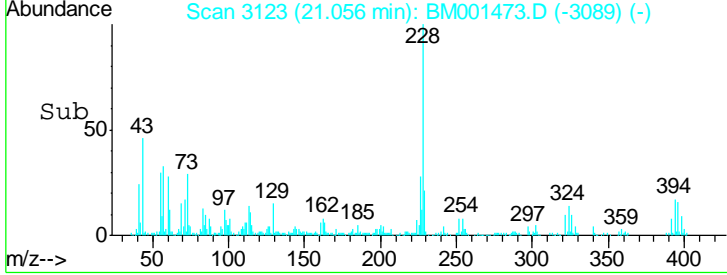
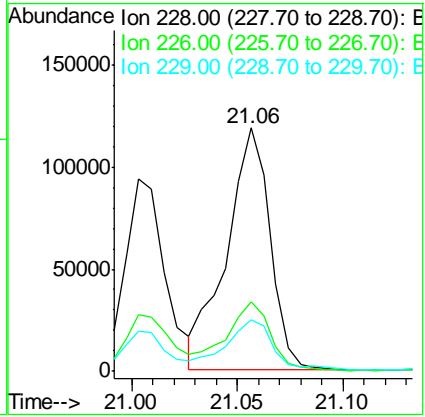
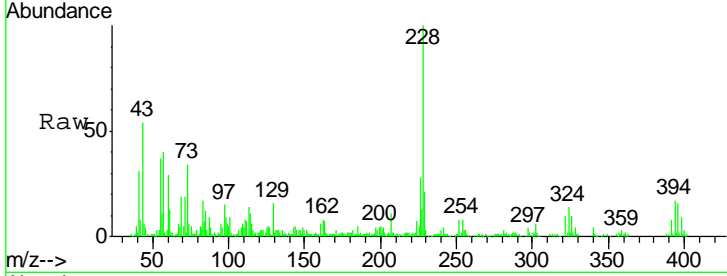


#82
 Chrysene
 Concen: 3.79 ng/ul
 RT: 21.06 min Scan# 3123
 Delta R.T. 0.00 min
 Lab File: BM001473.D
 Acq: 30 May 2015 13:58

Instrument :
 BNA_M
 ClientSampled :
 BCRB5RE

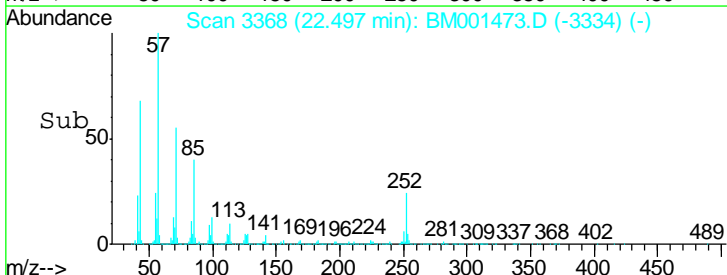
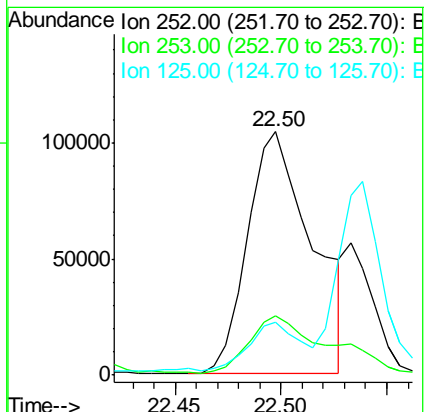
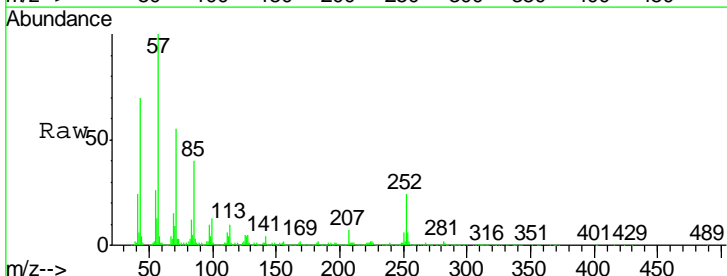
Tgt Ion	Resp	Lower	Upper
228	100		
226	28.3	23.0	34.4
229	21.2	15.7	23.5

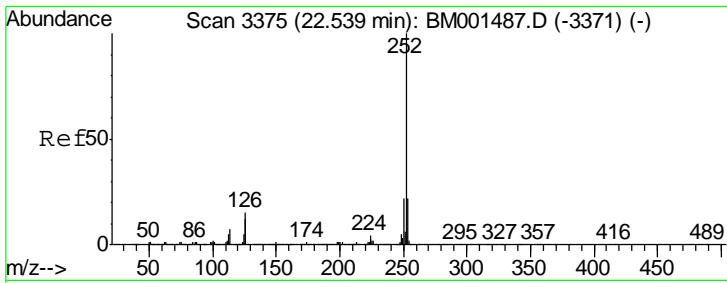
Manual Integrations
 APPROVED
 apatel
 6/1/2015 4:29:07 PM



#85
 Benzo(b)fluoranthene
 Concen: 4.94 ng/ul
 RT: 22.50 min Scan# 3368
 Delta R.T. 0.00 min
 Lab File: BM001473.D
 Acq: 30 May 2015 13:58

Tgt Ion	Resp	Lower	Upper
252	100		
253	24.1	18.0	27.0
125	22.0	8.6	12.8#





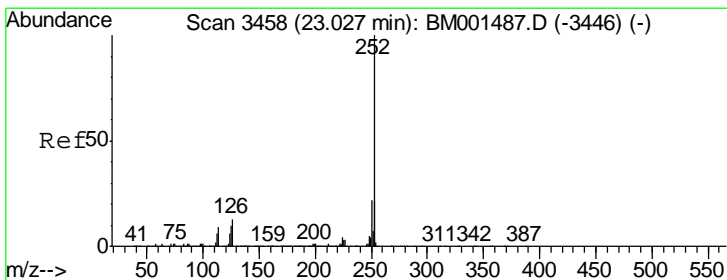
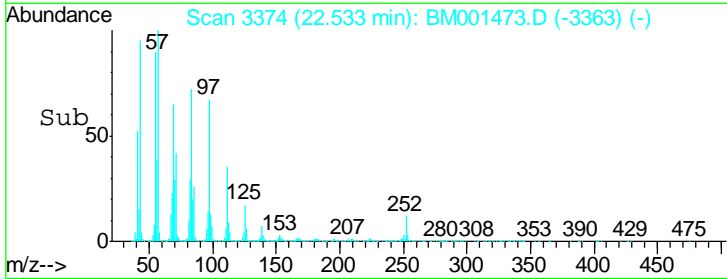
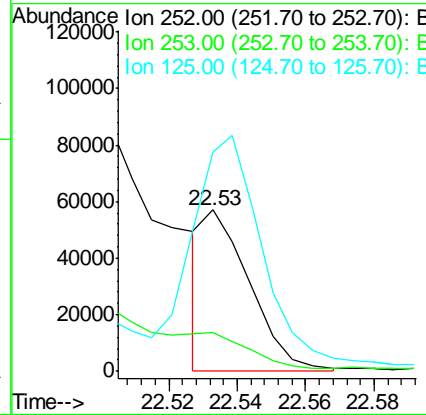
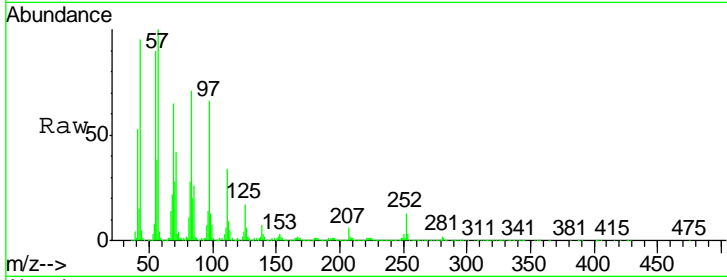
#86
 Benzo(k)fluoranthene
 Concen: 1.25 ng/ul m
 RT: 22.53 min Scan# 3374
 Delta R.T. -0.01 min
 Lab File: BM001473.D
 Acq: 30 May 2015 13:58

Instrument :
 BNA_M
 ClientSampled :
 BCRB5RE

Tgt Ion	Resp	Lower	Upper
252	100		
253	23.9	17.4	26.0
125	135.7	8.6	13.0

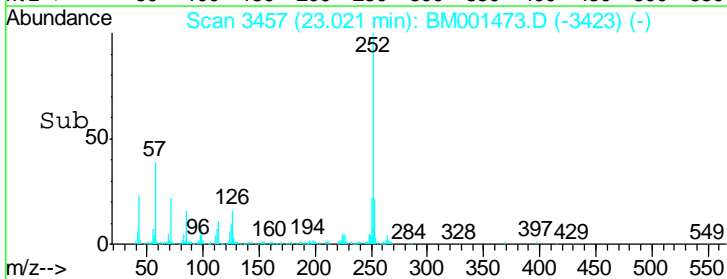
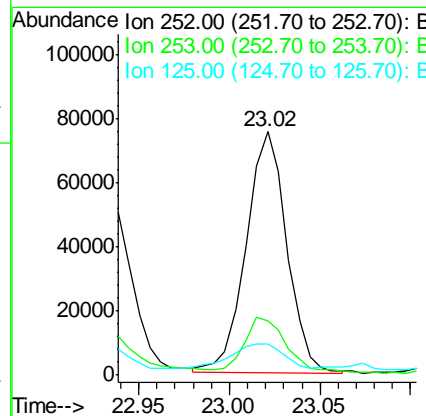
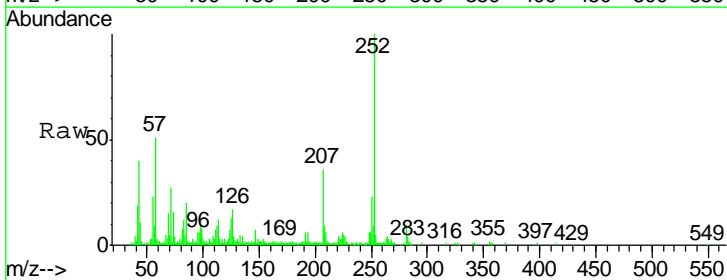
Manual Integrations
 APPROVED

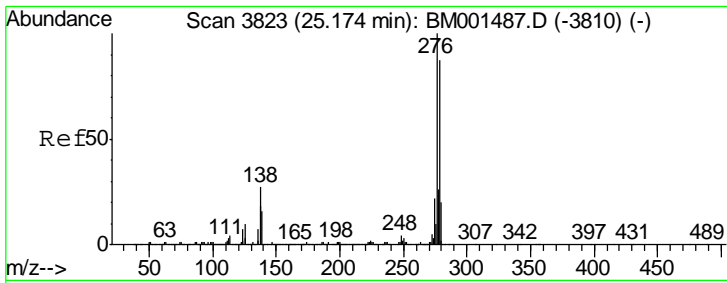
apatel
 6/1/2015 4:29:07 PM



#88
 Benzo(a)pyrene
 Concen: 2.82 ng/ul
 RT: 23.02 min Scan# 3457
 Delta R.T. 0.00 min
 Lab File: BM001473.D
 Acq: 30 May 2015 13:58

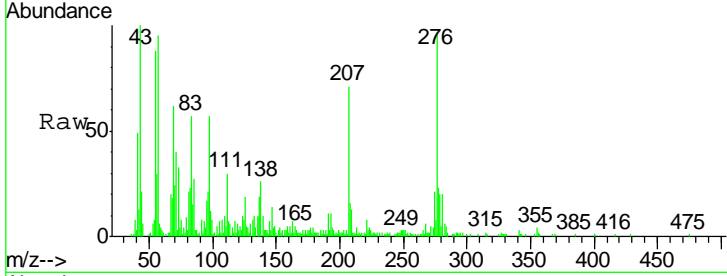
Tgt Ion	Resp	Lower	Upper
252	100		
253	22.5	17.0	25.4
125	12.6	8.8	13.2





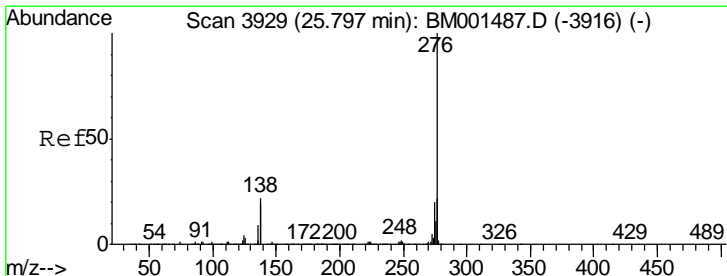
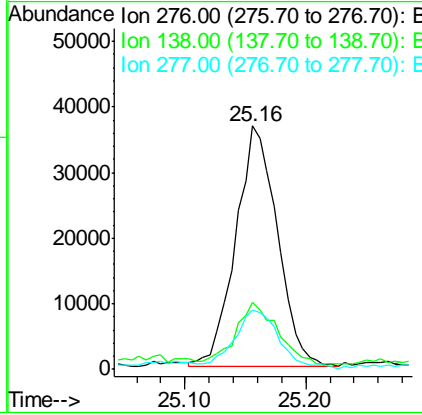
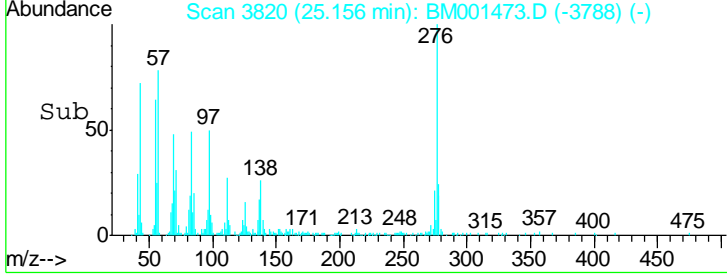
#89
 Indeno(1,2,3-cd)pyrene
 Concen: 1.98 ng/ul
 RT: 25.16 min Scan# 3820
 Delta R.T. -0.01 min
 Lab File: BM001473.D
 Acq: 30 May 2015 13:58

Instrument :
 BNA_M
ClientSampled :
 BCRB5RE

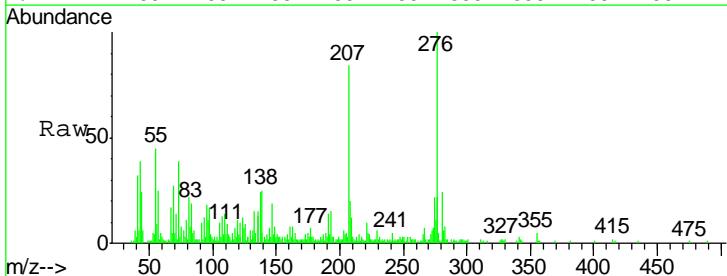


Tgt Ion	Resp	Lower	Upper
276	87527		
276	100		
138	27.3	20.6	31.0
277	24.2	19.2	28.8

Manual Integrations
APPROVED
 apatel
 6/1/2015 4:29:07 PM



#91
 Benzo(g,h,i)perylene
 Concen: 2.33 ng/ul
 RT: 25.79 min Scan# 3928
 Delta R.T. 0.00 min
 Lab File: BM001473.D
 Acq: 30 May 2015 13:58



Tgt Ion	Resp	Lower	Upper
276	84856		
276	100		
138	25.4	17.9	26.9
277	22.1	19.7	29.5

