

Data Path : Z:\HPCHEM1\BNA M\DATA\BM053017\  
 Data File : BM010314.D  
 Acq On : 30 May 2017 16:36  
 Operator : SJ/MA  
 Sample : I3162-03  
 Misc :  
 ALS Vial : 13 Sample Multiplier: 1

Instrument :  
 BNA\_M  
 ClientSampleId :  
 JHSE2

Quant Time: May 31 08:46:25 2017  
 Quant Method : Z:\HPCHEM1\BNA M\METHODS\SOM-EPA-SIM-BM053017.M  
 Quant Title : ASP BNA STANDARDS FOR 5 POINT CALIBRATION  
 QLast Update : Wed May 31 08:43:19 2017  
 Response via : Initial Calibration

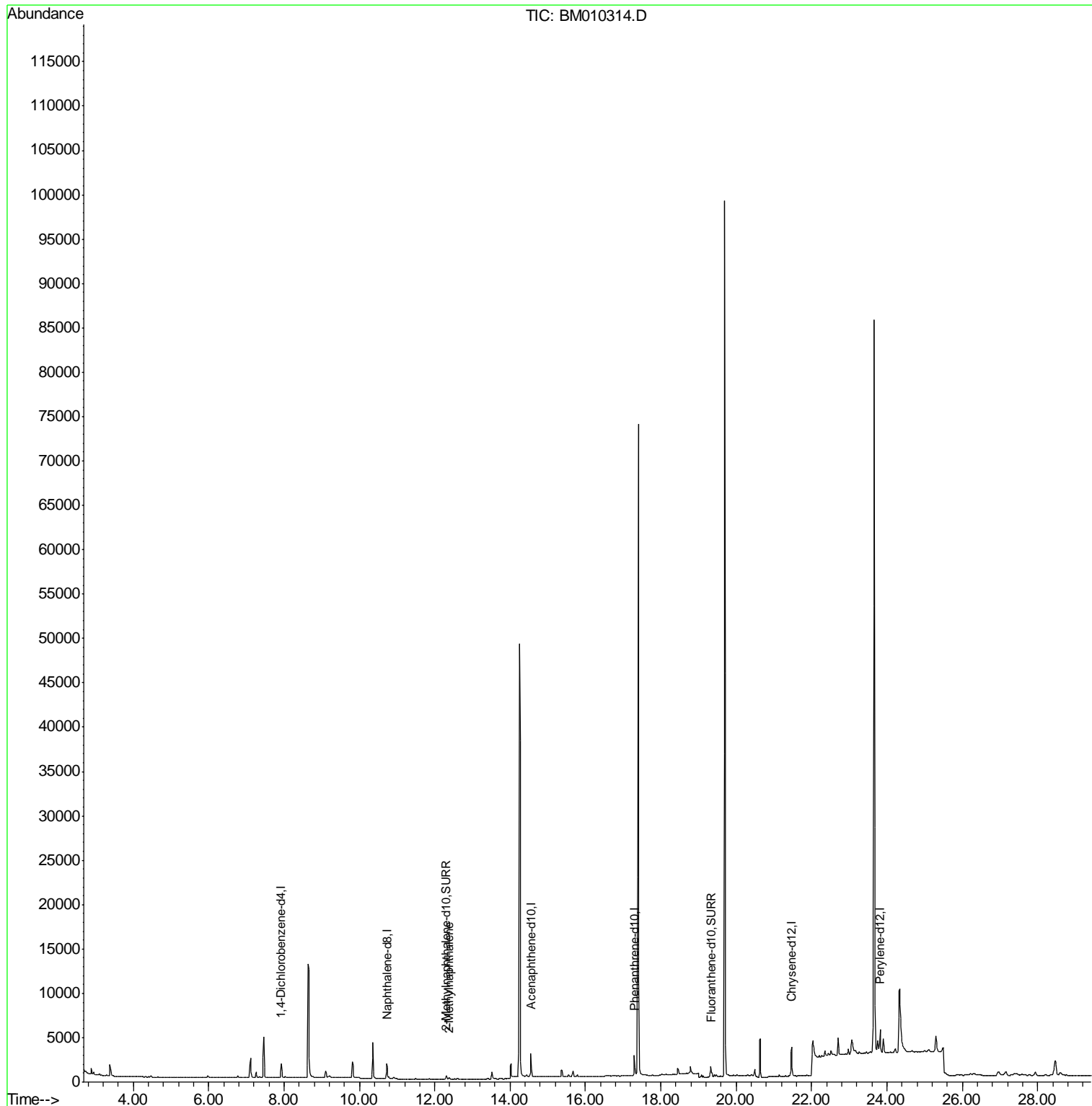
Internal Standards	R.T.	QIon	Response	Conc	Units	Dev(Min)
1) 1,4-Dichlorobenzene-d4	7.93	152	884	0.40	ng/ul	0.00
2) Naphthalene-d8	10.73	136	2590	0.40	ng/ul	0.00
6) Acenaphthene-d10	14.55	164	1455	0.40	ng/ul	0.00
10) Phenanthrene-d10	17.30	188	3215	0.40	ng/ul	0.00
16) Chrysene-d12	21.47	240	3362	0.40	ng/ul	0.00
20) Perylene-d12	23.82	264	3658	0.40	ng/ul	0.00
System Monitoring Compounds						
4) 2-Methylnaphthalene-d10	12.31	152	477	0.13	ng/ul	0.00
14) Fluoranthene-d10	19.33	212	1236	0.14	ng/ul	0.00
Target Compounds						
5) 2-Methylnaphthalene	12.38	142	117	0.02	ng/ul	Ovalue 98

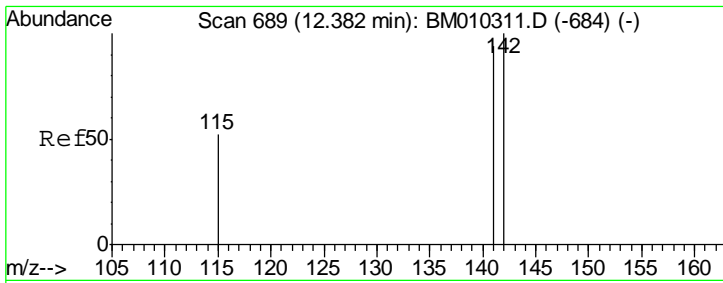
(#) = qualifier out of range (m) = manual integration (+) = signals summed

Data Path : Z:\HPCHEM1\BNA M\DATA\BM053017\  
Data File : BM010314.D  
Acq On : 30 May 2017 16:36  
Operator : SJ/MA  
Sample : I3162-03  
Misc :  
ALS Vial : 13 Sample Multiplier: 1

Instrument :  
BNA\_M  
ClientSampleId :  
JHSE2

Quant Time: May 31 08:46:25 2017  
Quant Method : Z:\HPCHEM1\BNA M\METHODS\SOM-EPA-SIM-BM053017.M  
Quant Title : ASP BNA STANDARDS FOR 5 POINT CALIBRATION  
QLast Update : Wed May 31 08:43:19 2017  
Response via : Initial Calibration





#5  
 2-Methylnaphthalene  
 Concen: 0.02 ng/ul  
 RT: 12.38 min Scan# 689  
 Delta R.T. 0.00 min  
 Lab File: BM010314.D  
 Acq: 30 May 2017 16:36

**Instrument :**  
 BNA\_M  
**ClientSampled :**  
 JHSE2

Tot Ion: 142 Resp: 117

Ion	Ratio	Lower	Upper
142	100		
141	88.9	72.6	108.8

