

Data Path : Z:\HPCHEM1\BNA_M\DATA\BM053017\
 Data File : BM010323.D
 Acq On : 30 May 2017 21:59
 Operator : SJ/MA
 Sample : I3162-15MS
 Misc :
 ALS Vial : 22 Sample Multiplier: 1

Instrument :
 BNA_M
ClientSampleId :
 JHSFOMS

Manual Integrations
APPROVED
 mohammad
 5/31/2017 2:58:48 PM

Quant Time: May 31 18:04:21 2017
 Quant Method : Z:\HPCHEM1\BNA_M\METHODS\SOM-EPA-SIM-BM053017.M
 Quant Title : ASP BNA STANDARDS FOR 5 POINT CALIBRATION
 QLast Update : Wed May 31 08:43:19 2017
 Response via : Initial Calibration

Internal Standards	R.T.	QIon	Response	Conc	Units	Dev(Min)
1) 1,4-Dichlorobenzene-d4	7.93	152	892	0.40	ng/ul	0.00
2) Naphthalene-d8	10.73	136	2696	0.40	ng/ul	0.00
6) Acenaphthene-d10	14.55	164	1575	0.40	ng/ul	0.00
10) Phenanthrene-d10	17.30	188	3476m	0.40	ng/ul	0.00
16) Chrysene-d12	21.47	240	3501	0.40	ng/ul	0.00
20) Perylene-d12	23.82	264	3471m	0.40	ng/ul	0.00
System Monitoring Compounds						
4) 2-Methylnaphthalene-d10	12.31	152	1131	0.29	ng/ul	0.00
14) Fluoranthene-d10	19.33	212	3023	0.33	ng/ul	0.00
Target Compounds						
8) Acenaphthene	14.61	153	1766	0.30	ng/ul	86
11) Pentachlorophenol	16.95	266	473	0.36	ng/ul	93
12) Phenanthrene	17.35	178	526m	0.05	ng/ul	
17) Pyrene	19.71	202	5611	0.38	ng/ul	97

mohammad

5/31/2017 2:58:48 PM

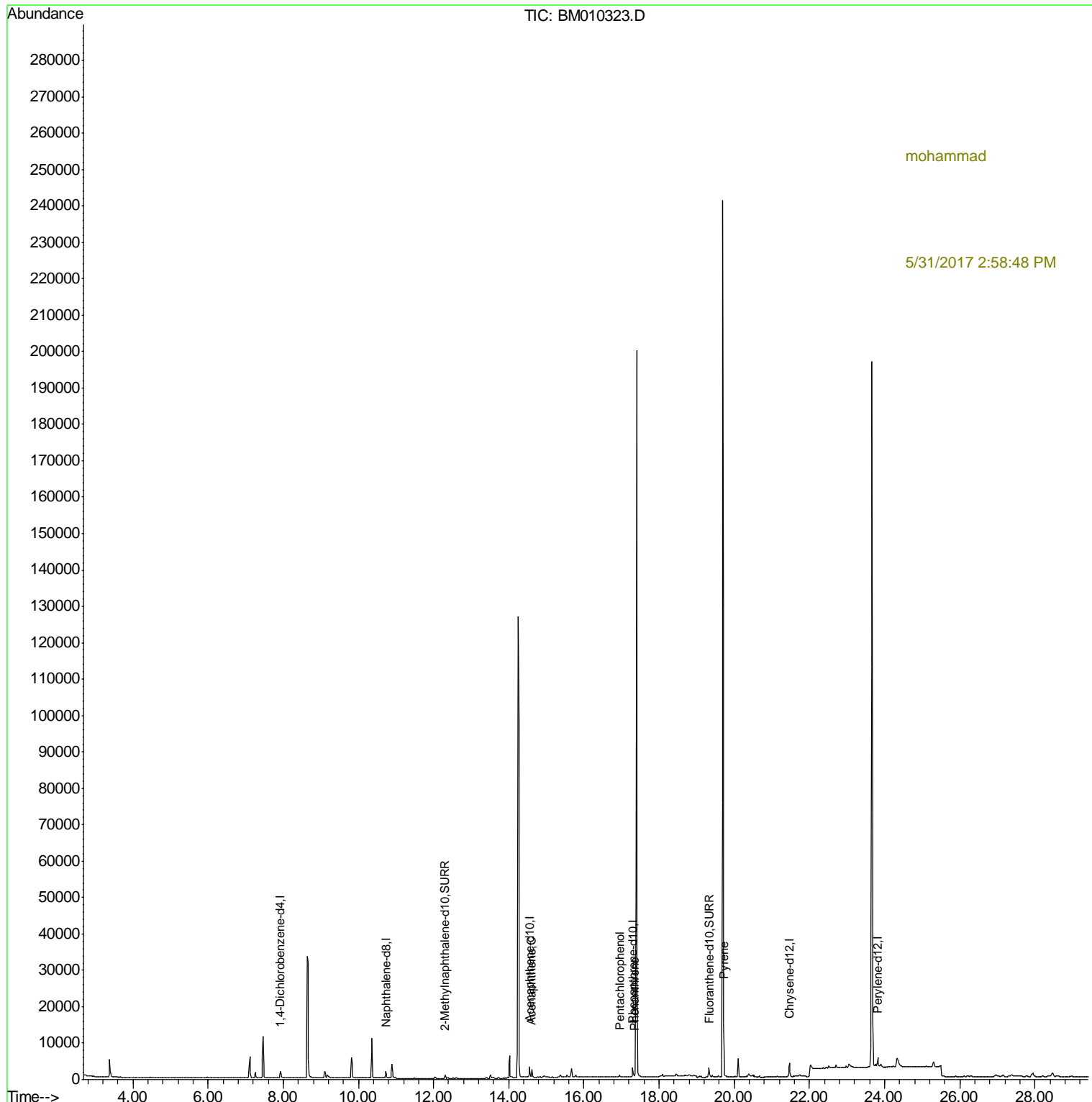
(#) = qualifier out of range (m) = manual integration (+) = signals summed

Data Path : Z:\HPCHEM1\BNA_M\DATA\BM053017\
 Data File : BM010323.D
 Acq On : 30 May 2017 21:59
 Operator : SJ/MA
 Sample : I3162-15MS
 Misc :
 ALS Vial : 22 Sample Multiplier: 1

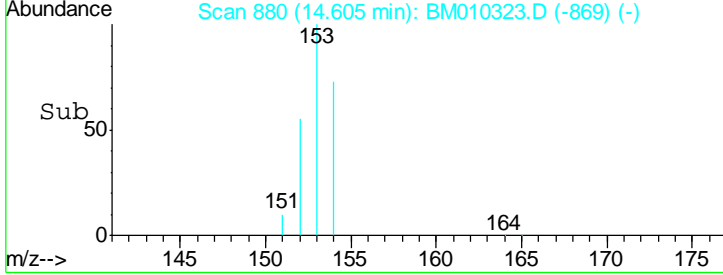
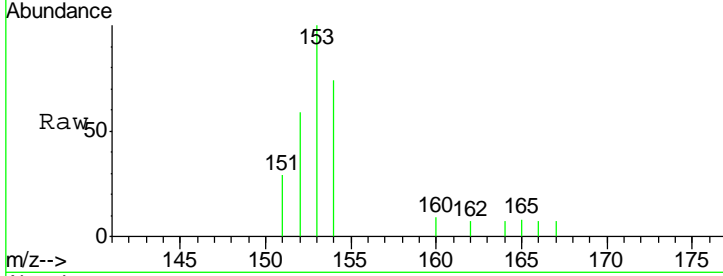
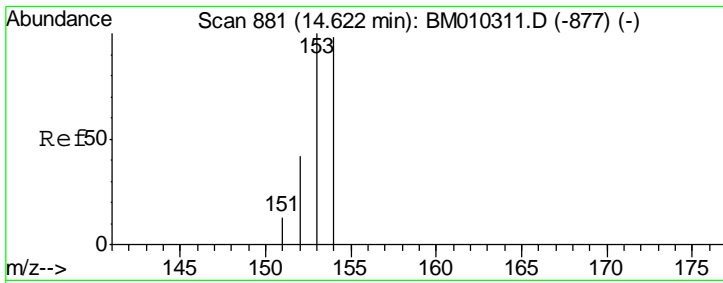
Instrument :
 BNA_M
Client Sampled :
 JHSFOMS

Manual Integrations
APPROVED
 mohammad
 5/31/2017 2:58:48 PM

Quant Time: May 31 18:04:21 2017
 Quant Method : Z:\HPCHEM1\BNA_M\METHODS\SOM-EPA-SIM-BM053017.M
 Quant Title : ASP BNA STANDARDS FOR 5 POINT CALIBRATION
 QLast Update : Wed May 31 08:43:19 2017
 Response via : Initial Calibration



mohammad
 5/31/2017 2:58:48 PM

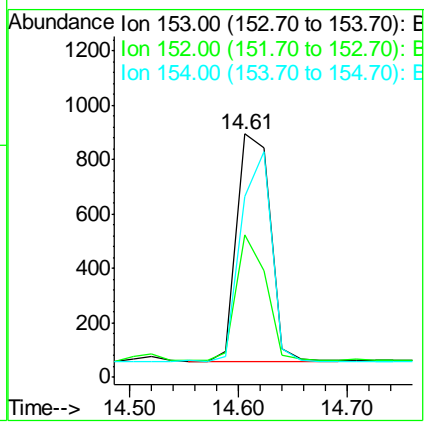


#8
 Acenaphthene
 Concen: 0.30 ng/ul
 RT: 14.61 min Scan# 880
 Delta R.T. -0.02 min
 Lab File: BM010323.D
 Acq: 30 May 2017 21:59

Tgt Ion	Resp	Lower	Upper
153	1766		
152	58.7	40.3	60.5
154	74.4	71.4	107.2

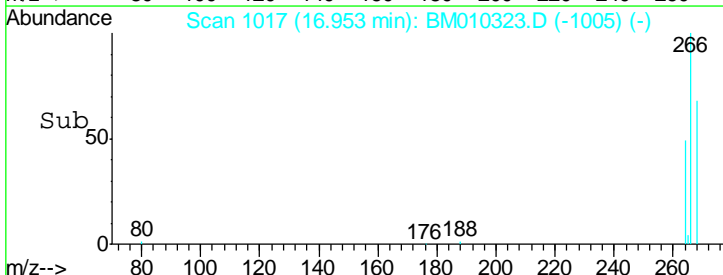
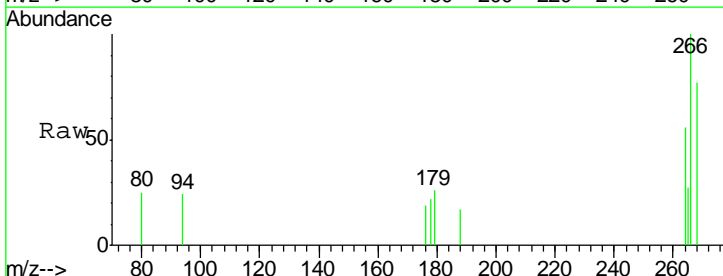
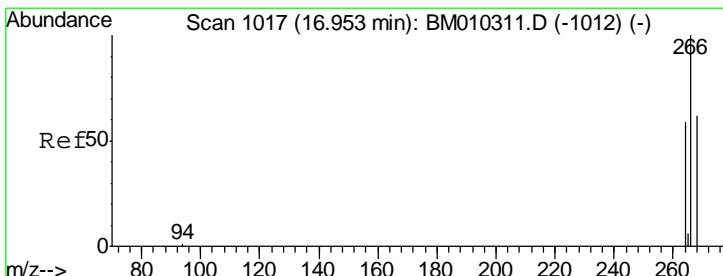
Instrument :
 BNA_M
 ClientSampled :
 JHSFOMS

Manual Integrations
APPROVED
 mohammad
 5/31/2017 2:58:48 PM



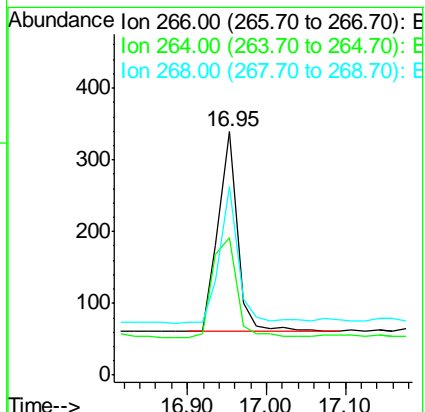
mohammad

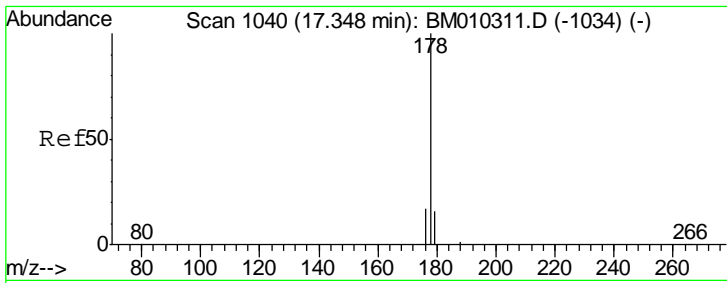
5/31/2017 2:58:48 PM



#11
 Pentachlorophenol
 Concen: 0.36 ng/ul
 RT: 16.95 min Scan# 1017
 Delta R.T. 0.00 min
 Lab File: BM010323.D
 Acq: 30 May 2017 21:59

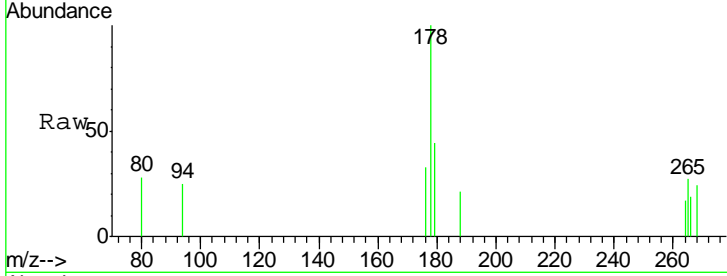
Tgt Ion	Resp	Lower	Upper
266	473		
264	62.2	47.9	71.9
268	71.2	49.8	74.8





#12
 Phenanthrene
 Concen: 0.05 ng/ul m
 RT: 17.35 min Scan# 1040
 Delta R.T. 0.00 min
 Lab File: BM010323.D
 Acq: 30 May 2017 21:59

Instrument :
 BNA_M
Client Sampled :
 JHSFOMS

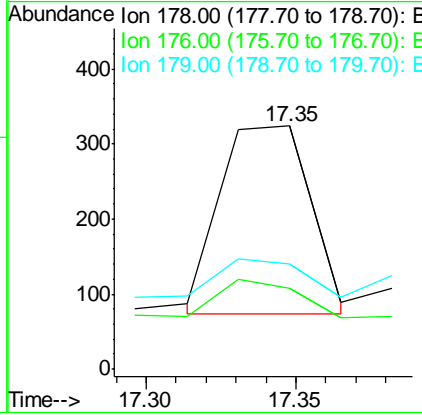
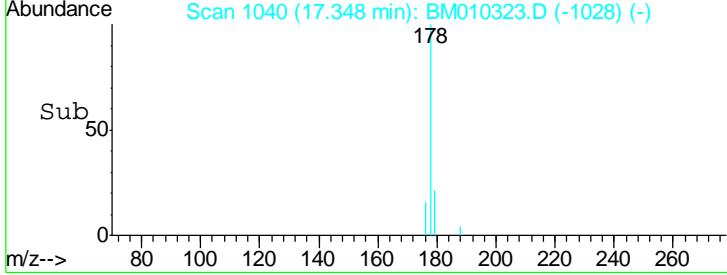


Tgt Ion: 178 Resp: 526

Ion	Ratio	Lower	Upper
178	100		
176	33.0	18.4	27.6#
179	43.5	13.6	20.4#

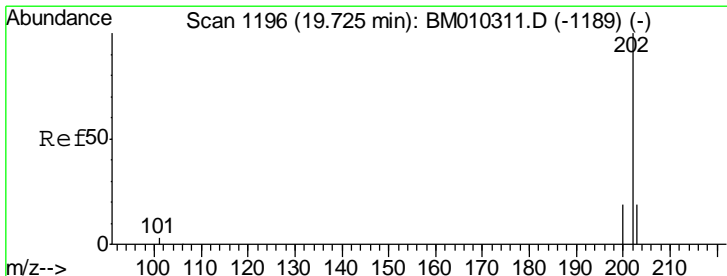
Manual Integrations
APPROVED

mohammad
 5/31/2017 2:58:48 PM

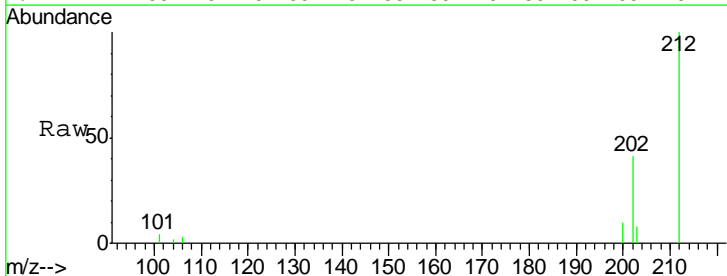


mohammad

5/31/2017 2:58:48 PM



#17
 Pyrene
 Concen: 0.38 ng/ul
 RT: 19.71 min Scan# 1195
 Delta R.T. -0.01 min
 Lab File: BM010323.D
 Acq: 30 May 2017 21:59



Tgt Ion: 202 Resp: 5611

Ion	Ratio	Lower	Upper
202	100		
200	24.7	18.2	27.4
203	20.5	15.6	23.4

