

Data Path : Z:\HPCHEM1\BNA_M\DATA\BM060215\
 Data File : BM001521.D
 Acq On : 02 Jun 2015 20:04
 Operator : TP/IZ
 Sample : SSTDICCO.5
 Misc :
 ALS Vial : 7 Sample Multiplier: 1

Instrument :
 BNA_M
 ClientSampleId :
 SSTDICCO.5

Quant Time: Jun 03 01:40:03 2015
 Quant Method : Z:\HPCHEM1\BNA_M\METHODS\SIM-BM060215.M
 Quant Title : ASP BNA STANDARDS FOR 5 POINT CALIBRATION
 QLast Update : Tue Jun 02 15:30:22 2015
 Response via : Initial Calibration

Internal Standards	R.T.	QIon	Response	Conc	Units	Dev(Min)
1) 1,4-Dichlorobenzene-d4	7.71	152	19104	5.00	ng	0.00
6) Naphthalene-d8	10.49	136	66065	5.00	ng	0.00
12) Acenaphthene-d10	14.36	164	30409	5.00	ng	0.00
18) Phenanthrene-d10	17.09	188	87080	5.00	ng	0.00
25) Chrysene-d12	21.30	240	50084	5.00	ng	0.00
32) Perylene-d12	23.54	264	47699	5.00	ng	0.00

System Monitoring Compounds

4) 2-Fluorophenol	5.28	112	2095	0.50	ng	-0.02
5) Phenol-d6	6.86	99	2579	0.50	ng	0.00
7) Nitrobenzene-d5	8.87	82	2021	0.50	ng	0.00
13) 2,4,6-Tribromophenol	15.83	330	287	0.44	ng	0.00
14) 2-Fluorobiphenyl	12.98	172	4700	0.52	ng	0.00
27) Terphenyl-d14	19.75	244	3162	0.51	ng	0.00

Target Compounds

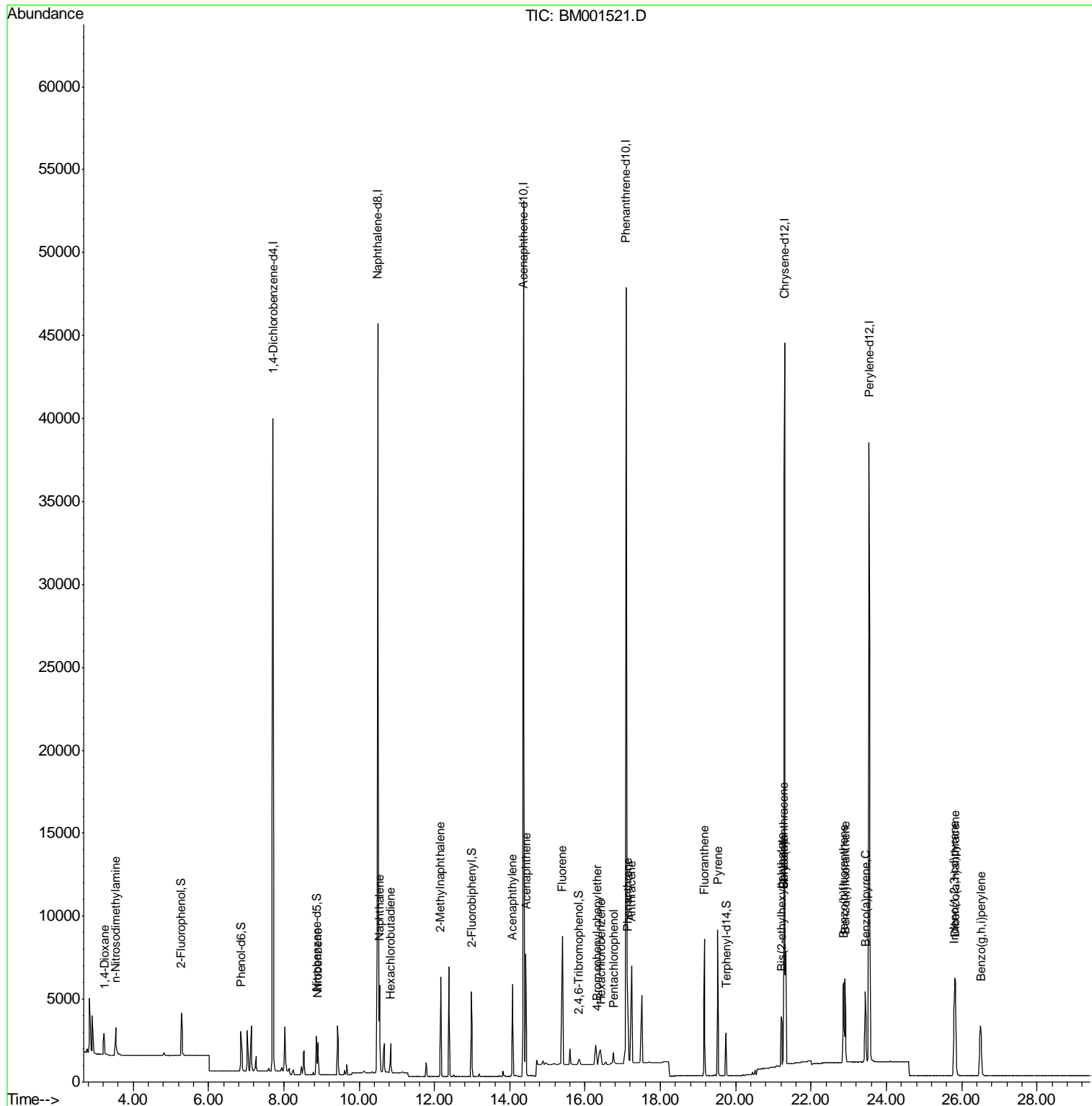
Target Compounds	R.T.	QIon	Response	Conc	Units	Qvalue
2) 1,4-Dioxane	3.23	88	980	0.50	ng	90
3) n-Nitrosodimethylamine	3.54	42	1328	0.49	ng	# 90
8) Nitrobenzene	8.91	77	2139	0.49	ng	96
9) Naphthalene	10.54	128	7039	0.50	ng	98
10) Hexachlorobutadiene	10.83	225	1242	0.51	ng	99
11) 2-Methylnaphthalene	12.17	142	4358	0.49	ng	96
15) Acenaphthylene	14.07	152	6421	0.49	ng	100
16) Acenaphthene	14.42	154	3978	0.49	ng	100
17) Fluorene	15.39	166	6646	0.53	ng	99
19) 4-Bromophenyl-phenylether	16.31	248	607	0.42	ng	# 47
20) Hexachlorobenzene	16.41	284	1604	0.53	ng	# 59
21) Pentachlorophenol	16.75	266	634	0.47	ng	95
22) Phenanthrene	17.12	178	7840	0.47	ng	98
23) Anthracene	17.23	178	9051	0.52	ng	99
24) Fluoranthene	19.16	202	7385	0.47	ng	# 97
26) Pyrene	19.53	202	7797	0.51	ng	99
28) Benzo(a)anthracene	21.27	228	6881	0.50	ng	94
29) Chrysene	21.27	228	6881	0.54	ng	96
30) Bis(2-ethylhexyl)phthalate	21.21	149	4451	0.39	ng	96
31) Indeno(1,2,3-cd)pyrene	25.80	276	7433	0.54	ng	# 93
33) Benzo(b)fluoranthene	22.87	252	7088	0.51	ng	# 89
34) Benzo(k)fluoranthene	22.91	252	5857	0.48	ng	# 90
35) Benzo(a)pyrene	23.44	252	5835	0.49	ng	# 90
36) Dibenzo(a,h)anthracene	25.83	278	5889	0.52	ng	# 92
37) Benzo(g,h,i)perylene	26.50	276	6231	0.52	ng	# 93

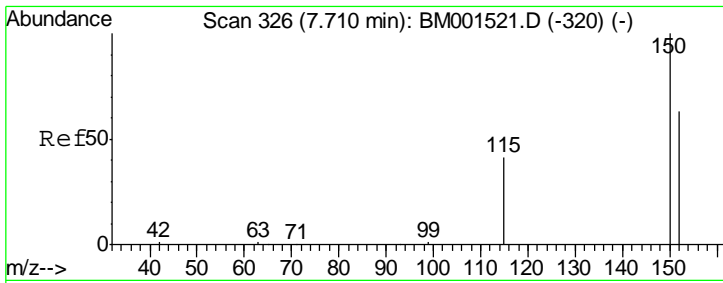
(#) = qualifier out of range (m) = manual integration (+) = signals summed

Data Path : Z:\HPCHEM1\BNA_M\DATA\BM060215\
 Data File : BM001521.D
 Acq On : 02 Jun 2015 20:04
 Operator : TP/IZ
 Sample : SSTDICC0.5
 Misc :
 ALS Vial : 7 Sample Multiplier: 1

Instrument :
 BNA_M
 Client Sampled :
 SSTDICC0.5

Quant Time: Jun 03 01:40:03 2015
 Quant Method : Z:\HPCHEM1\BNA_M\METHODS\SIM-BM060215.M
 Quant Title : ASP BNA STANDARDS FOR 5 POINT CALIBRATION
 QLast Update : Tue Jun 02 15:30:22 2015
 Response via : Initial Calibration

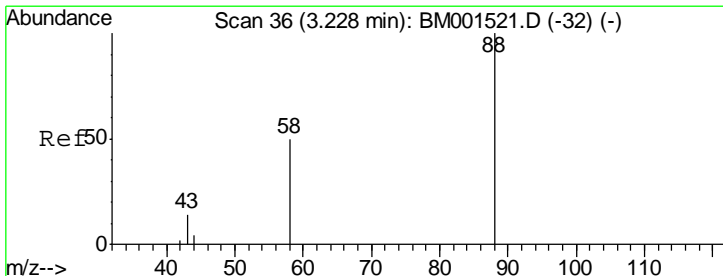
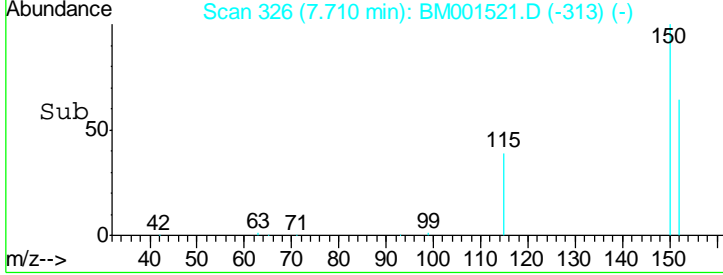
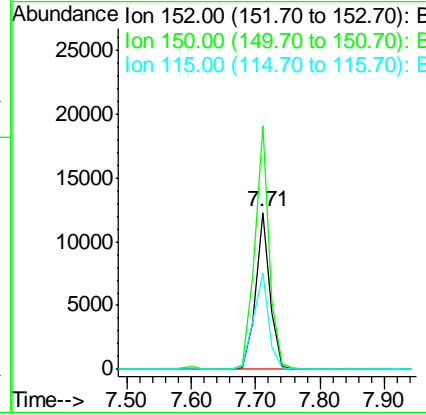
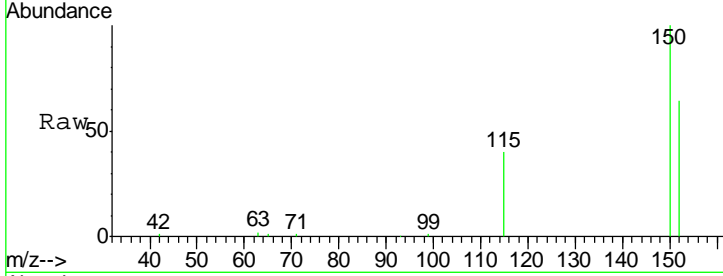




#1
 1,4-Dichlorobenzene-d4
 Concen: 5.00 ng
 RT: 7.71 min Scan# 326
 Delta R.T. 0.00 min
 Lab File: BM001521.D
 Acq: 02 Jun 2015 20:04

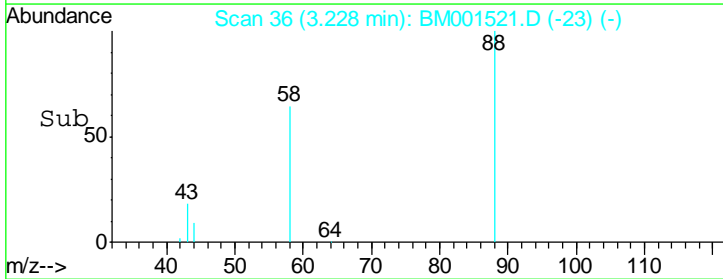
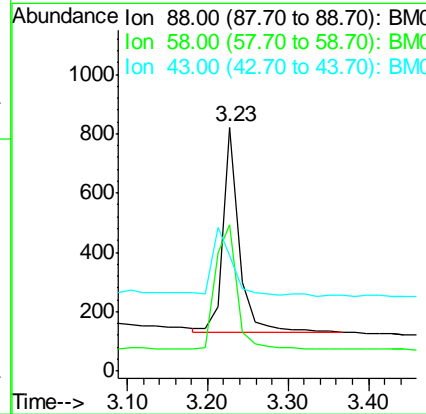
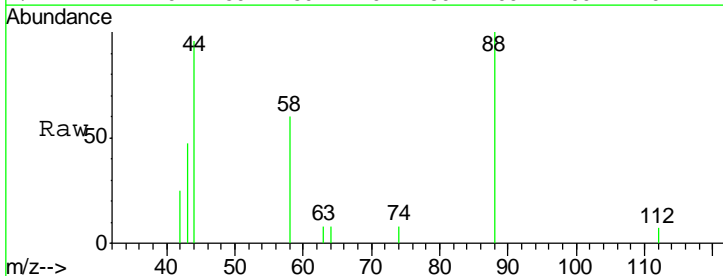
Instrument :
 BNA_M
ClientSampled :
 SSTDICC0.5

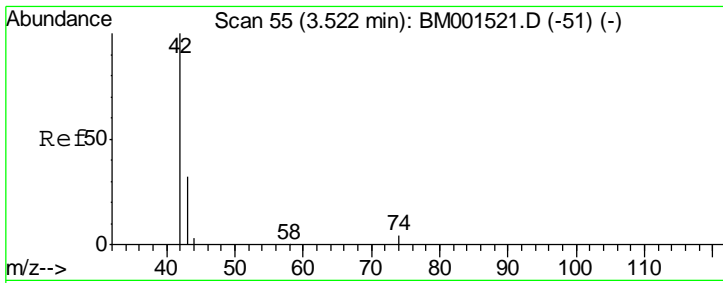
Tgt Ion	Resp	Lower	Upper
152	19104		
150	155.1	119.0	178.6
115	61.5	41.8	62.8



#2
 1,4-Dioxane
 Concen: 0.50 ng
 RT: 3.23 min Scan# 36
 Delta R.T. 0.00 min
 Lab File: BM001521.D
 Acq: 02 Jun 2015 20:04

Tgt Ion	Resp	Lower	Upper
88	980		
58	80.0	71.3	106.9
43	38.5	35.5	53.3

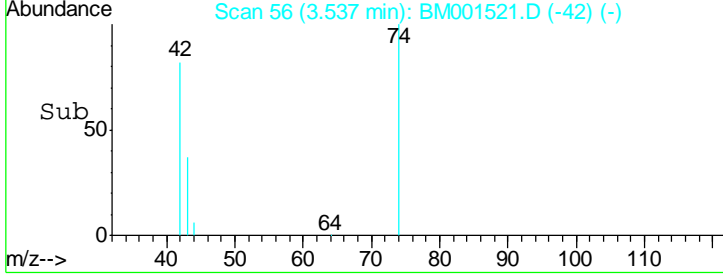
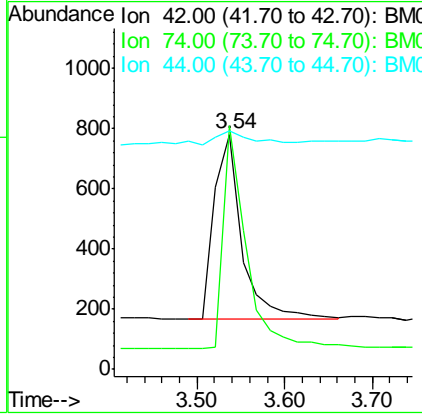
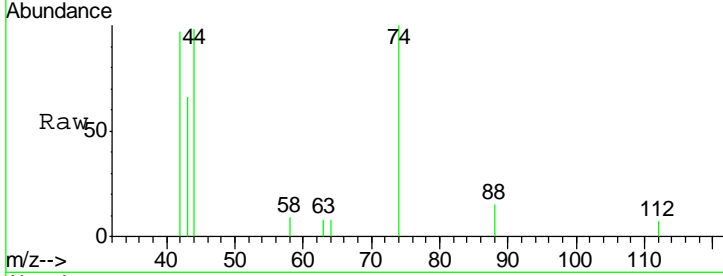




#3
 n-Nitrosodimethylamine
 Concen: 0.49 ng
 RT: 3.54 min Scan# 56
 Delta R.T. 0.02 min
 Lab File: BM001521.D
 Acq: 02 Jun 2015 20:04

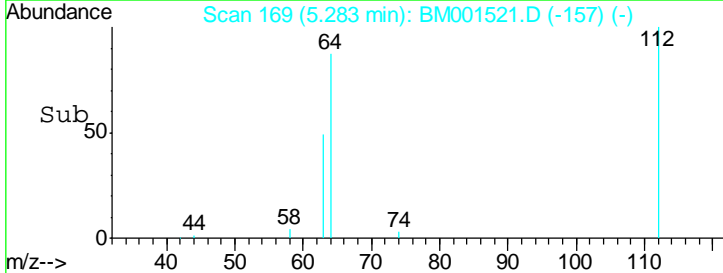
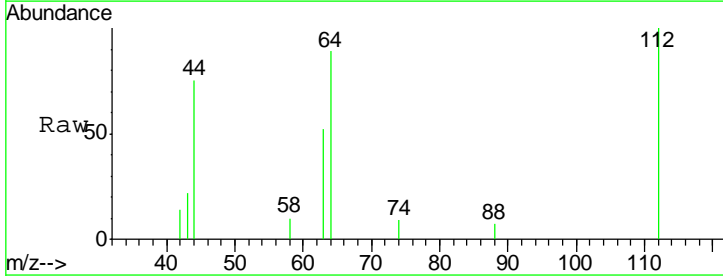
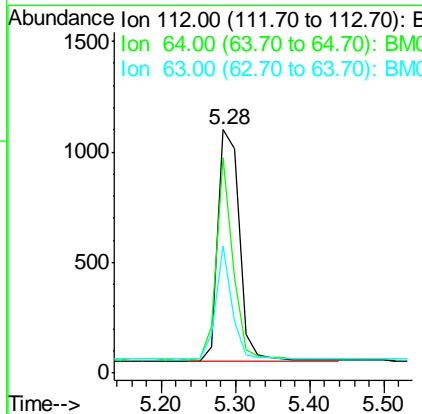
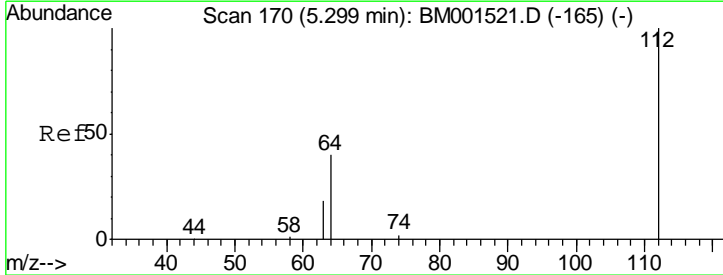
Instrument :
 BNA_M
ClientSampled :
 SSTDICC0.5

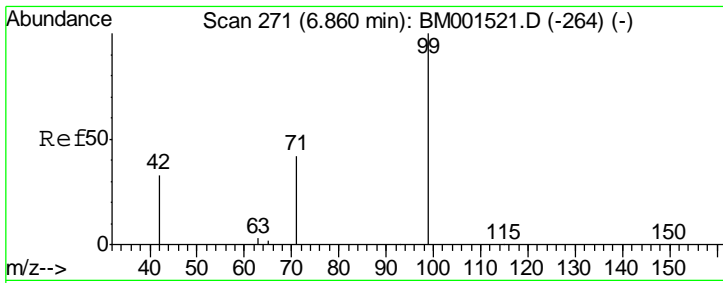
Tgt Ion	Resp	Lower	Upper
42	1328		
42	100		
74	100.2	72.2	108.2
44	10.1	6.2	9.2#



#4
 2-Fluorophenol
 Concen: 0.50 ng
 RT: 5.28 min Scan# 169
 Delta R.T. -0.02 min
 Lab File: BM001521.D
 Acq: 02 Jun 2015 20:04

Tgt Ion	Resp	Lower	Upper
112	2095		
112	100		
64	67.9	51.7	77.5
63	37.9	29.7	44.5

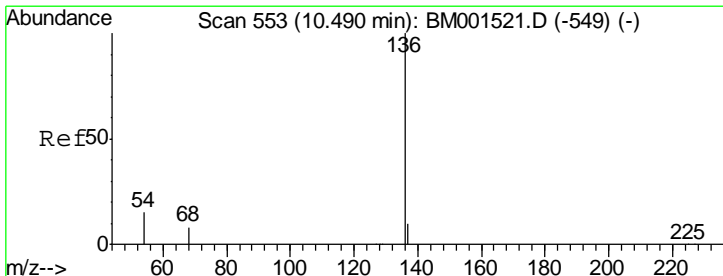
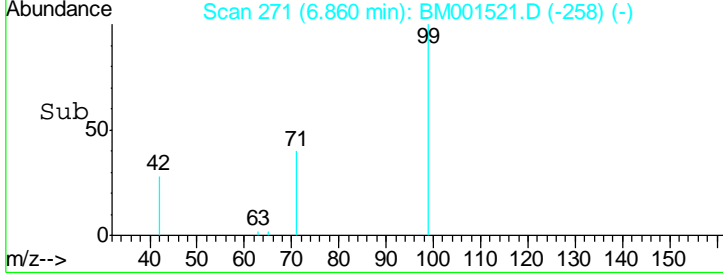
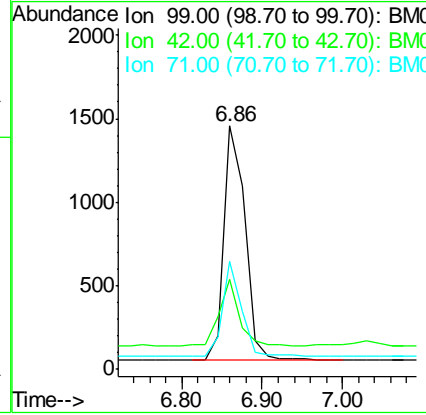
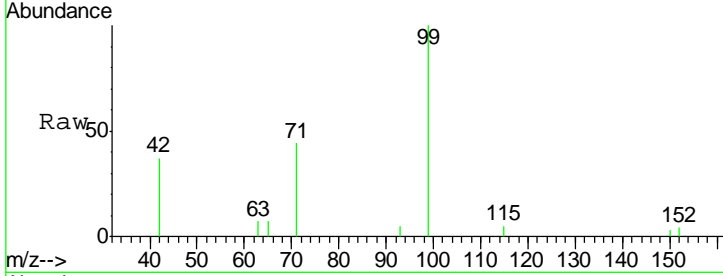




#5
 Phenol-d6
 Concen: 0.50 ng
 RT: 6.86 min Scan# 271
 Delta R.T. 0.00 min
 Lab File: BM001521.D
 Acq: 02 Jun 2015 20:04

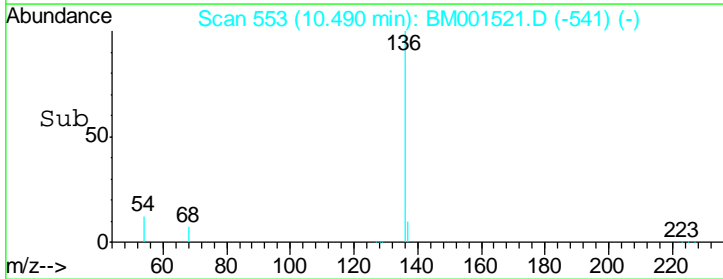
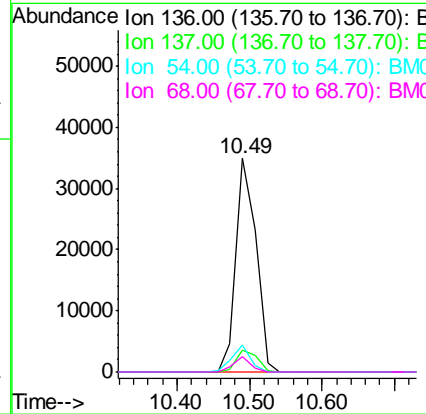
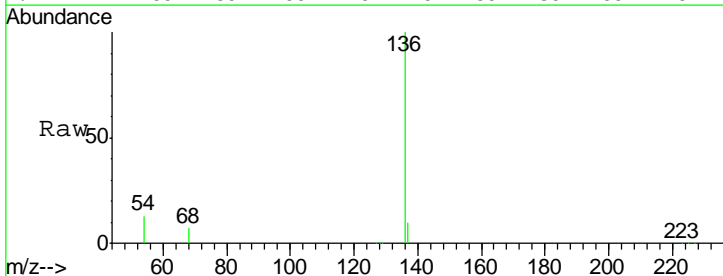
Instrument :
 BNA_M
ClientSampled :
 SSTDICC0.5

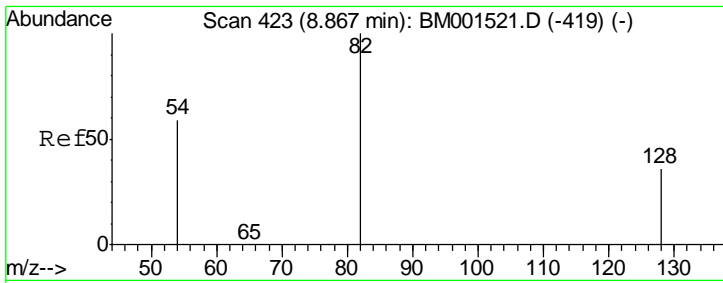
Tgt Ion	Resp	Lower	Upper
99	100		
42	26.1	21.8	32.6
71	36.3	29.2	43.8



#6
 Naphthalene-d8
 Concen: 5.00 ng
 RT: 10.49 min Scan# 553
 Delta R.T. 0.00 min
 Lab File: BM001521.D
 Acq: 02 Jun 2015 20:04

Tgt Ion	Resp	Lower	Upper
136	100		
137	10.1	9.1	13.7
54	12.6	4.3	6.5#
68	7.3	2.6	4.0#

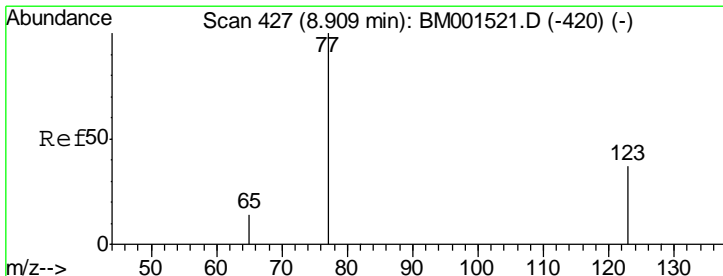
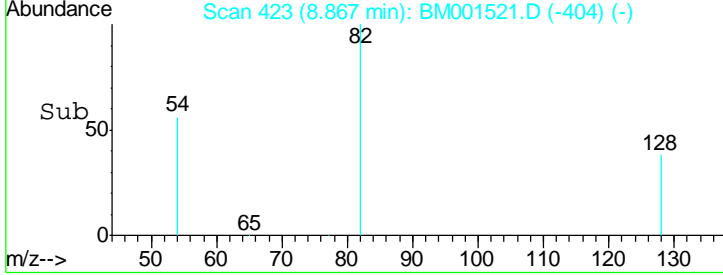
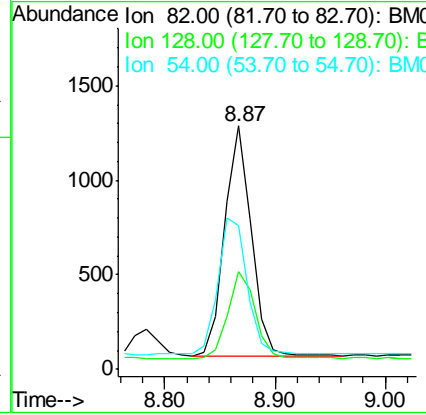
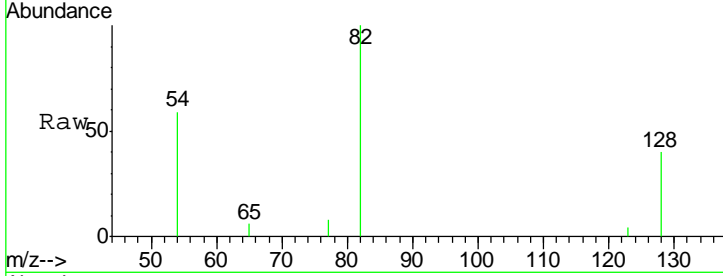




#7
 Nitrobenzene-d5
 Concen: 0.50 ng
 RT: 8.87 min Scan# 423
 Delta R.T. 0.00 min
 Lab File: BM001521.D
 Acq: 02 Jun 2015 20:04

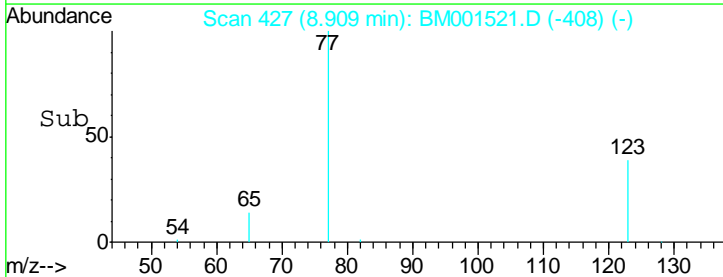
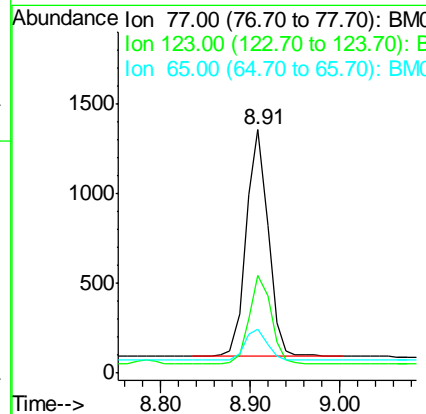
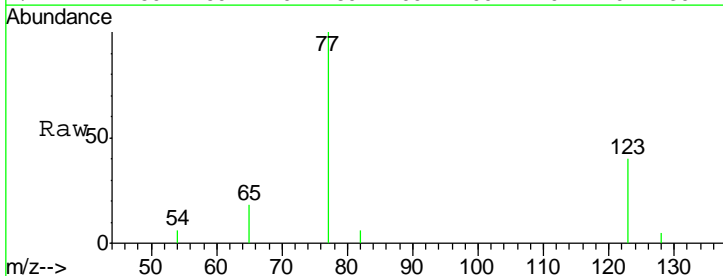
Instrument :
 BNA_M
ClientSampled :
 SSTDICC0.5

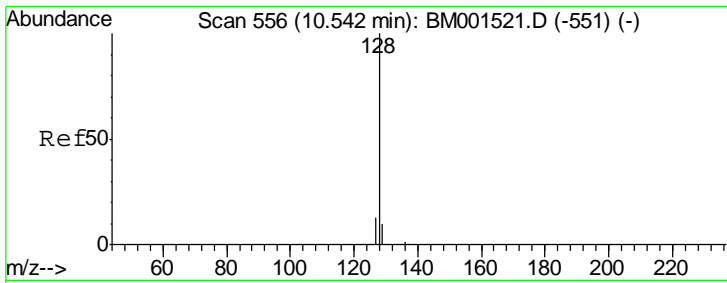
Tgt Ion	Resp	Lower	Upper
82	100		
128	40.1	30.2	45.4
54	58.8	52.9	79.3



#8
 Nitrobenzene
 Concen: 0.49 ng
 RT: 8.91 min Scan# 427
 Delta R.T. 0.00 min
 Lab File: BM001521.D
 Acq: 02 Jun 2015 20:04

Tgt Ion	Resp	Lower	Upper
77	100		
123	39.5	33.7	50.5
65	14.8	11.3	16.9

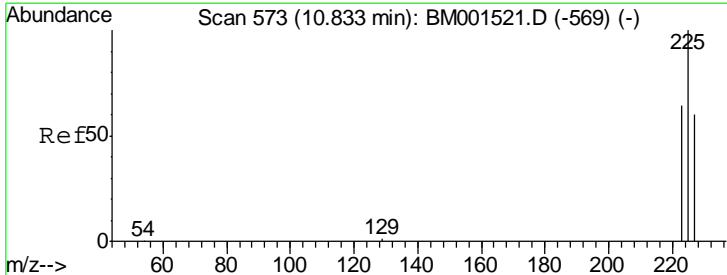
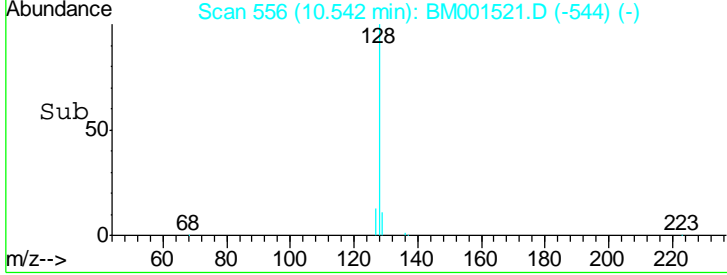
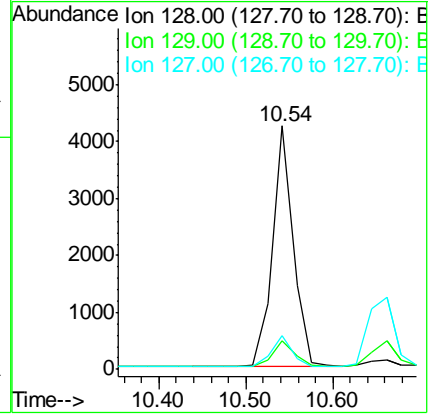
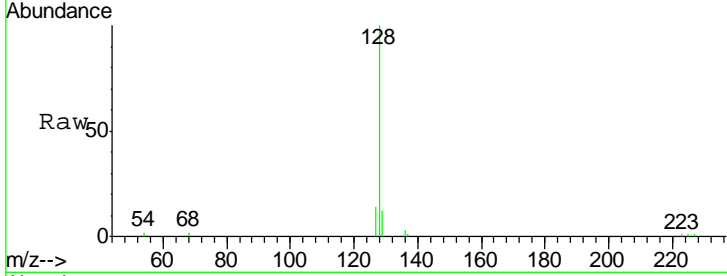




#9
 Naphthalene
 Concen: 0.50 ng
 RT: 10.54 min Scan# 556
 Delta R.T. 0.00 min
 Lab File: BM001521.D
 Acq: 02 Jun 2015 20:04

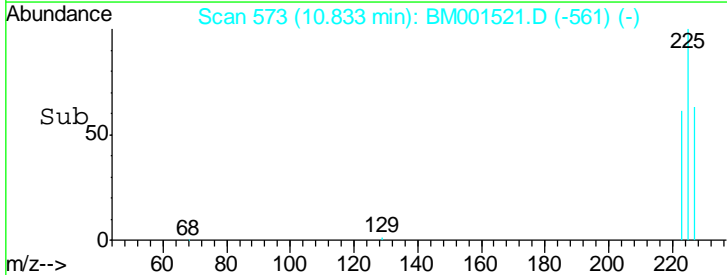
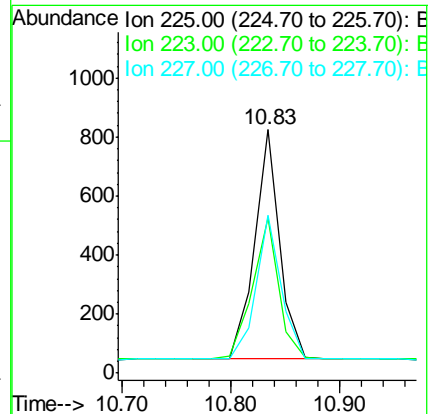
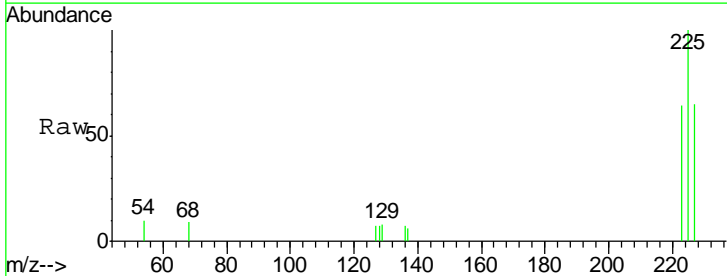
Instrument :
 BNA_M
 ClientSampled :
 SSTDICC0.5

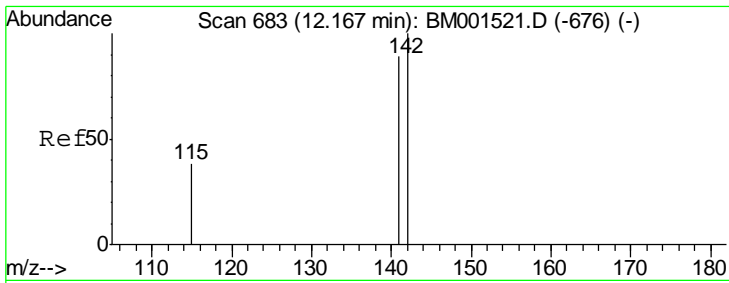
Tgt Ion	Resp	Lower	Upper
128	100		
129	11.8	8.6	13.0
127	13.8	11.7	17.5



#10
 Hexachlorobutadiene
 Concen: 0.51 ng
 RT: 10.83 min Scan# 573
 Delta R.T. 0.00 min
 Lab File: BM001521.D
 Acq: 02 Jun 2015 20:04

Tgt Ion	Resp	Lower	Upper
225	100		
223	63.5	50.2	75.2
227	63.1	51.1	76.7

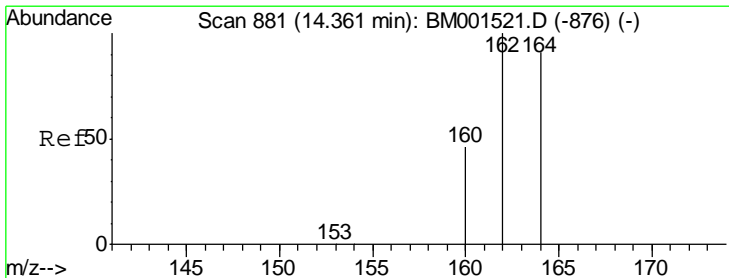
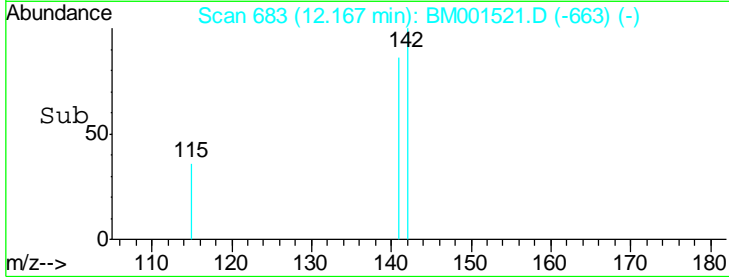
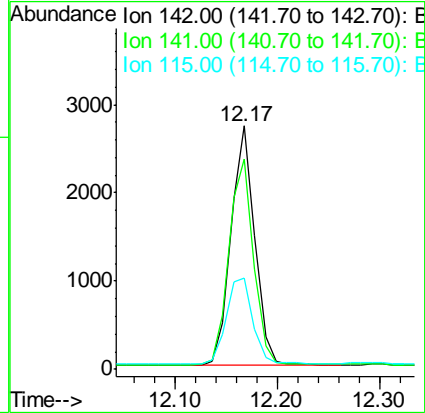
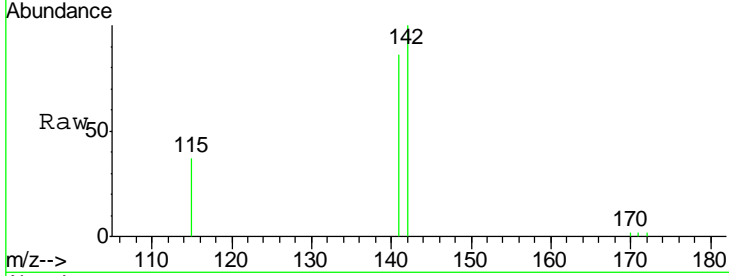




#11
 2-Methylnaphthalene
 Concen: 0.49 ng
 RT: 12.17 min Scan# 683
 Delta R.T. 0.00 min
 Lab File: BM001521.D
 Acq: 02 Jun 2015 20:04

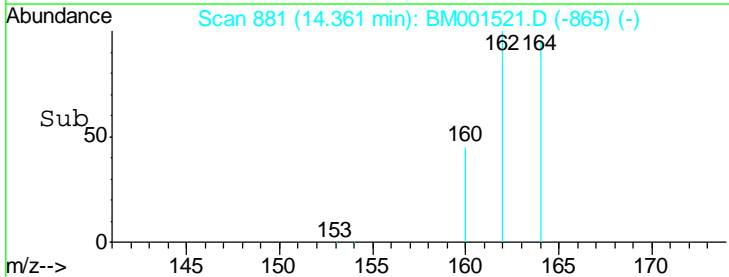
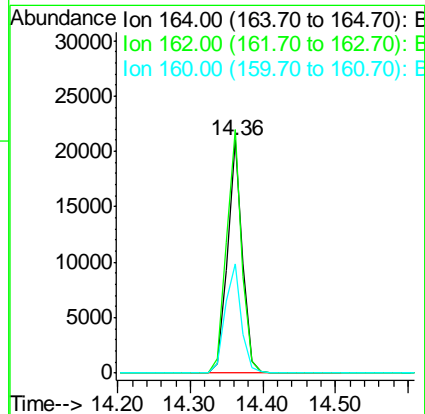
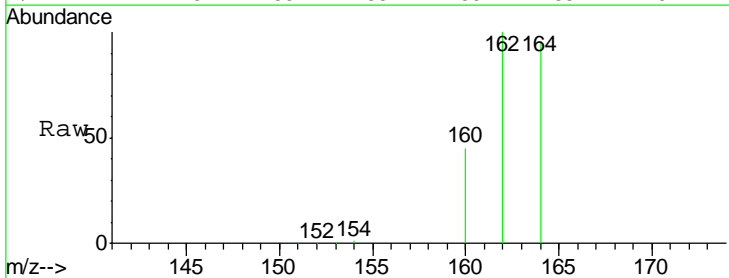
Instrument :
 BNA_M
 ClientSampleId :
 SSTDICC0.5

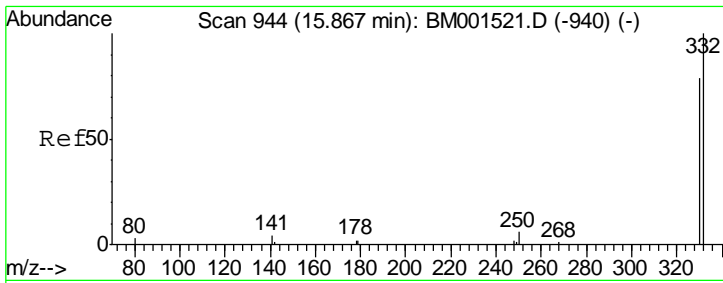
Tgt Ion	Resp	Ion Ratio	Lower	Upper
142	4358	100		
141	86.4	72.6	109.0	
115	37.4	31.2	46.8	



#12
 Acenaphthene-d10
 Concen: 5.00 ng
 RT: 14.36 min Scan# 881
 Delta R.T. -0.01 min
 Lab File: BM001521.D
 Acq: 02 Jun 2015 20:04

Tgt Ion	Resp	Ion Ratio	Lower	Upper
164	30409	100		
162	104.4	83.4	125.2	
160	46.7	36.9	55.3	



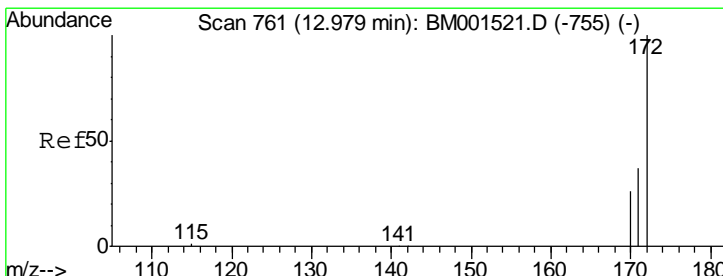
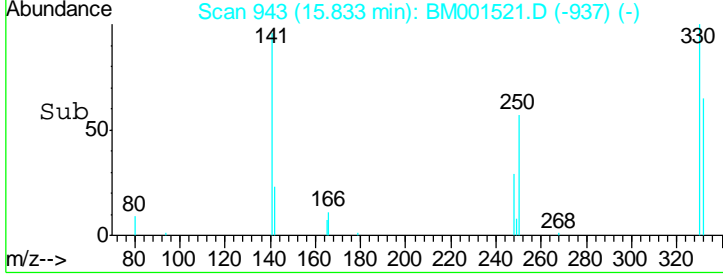
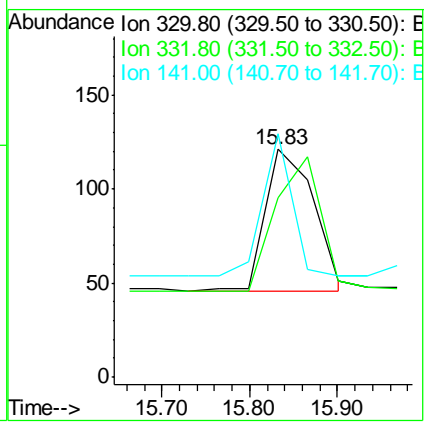
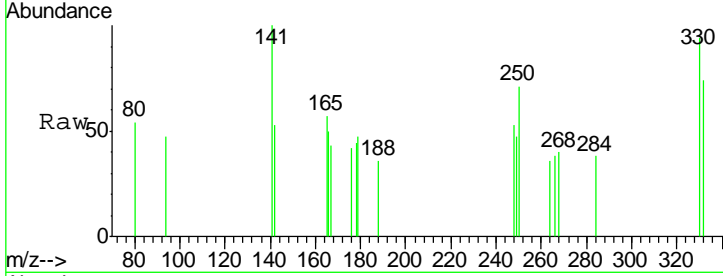


#13
 2,4,6-Tribromophenol
 Concen: 0.44 ng
 RT: 15.83 min Scan# 943
 Delta R.T. -0.01 min
 Lab File: BM001521.D
 Acq: 02 Jun 2015 20:04

Instrument :
 BNA_M
ClientSampled :
 SSTDICC0.5

Tgt Ion: 330 Resp: 287

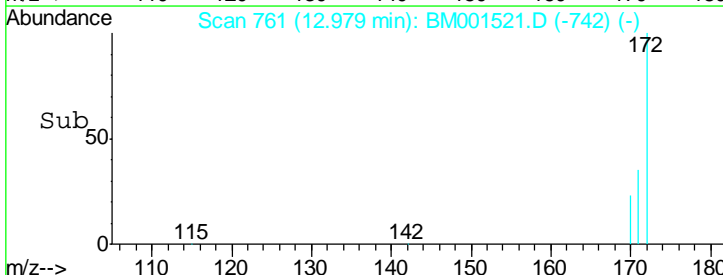
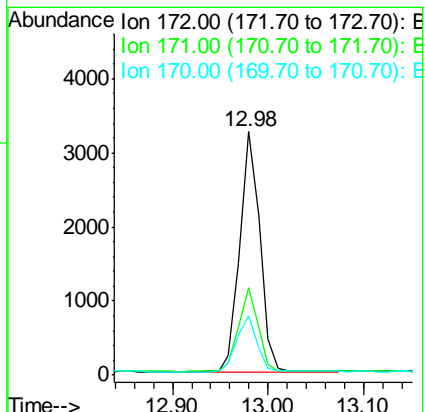
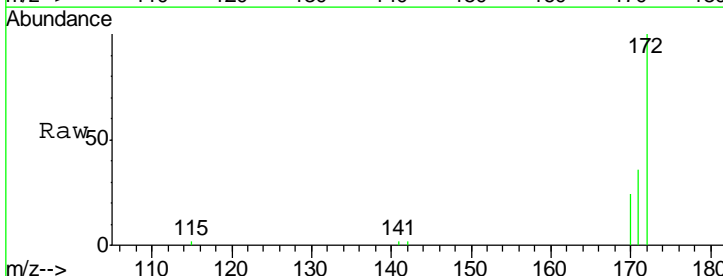
Ion	Ratio	Lower	Upper
330	100		
332	0.0	90.3	135.5#
141	60.3	0.0	0.0#

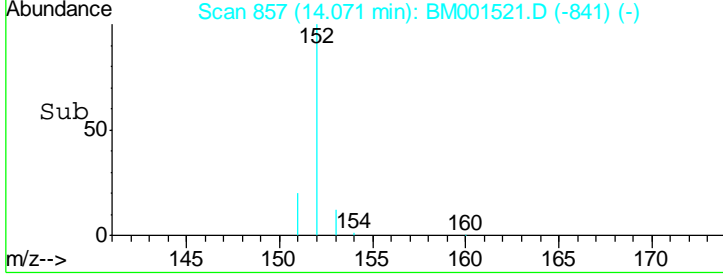
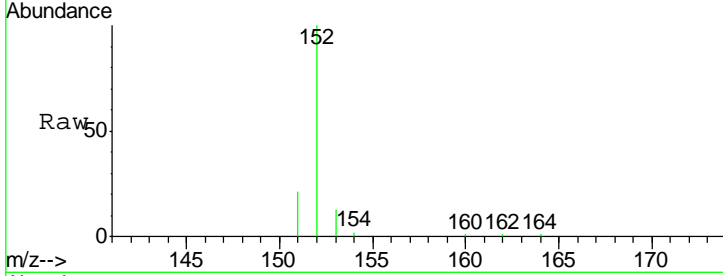
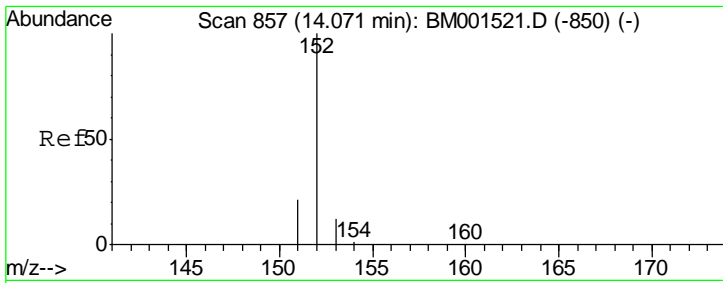


#14
 2-Fluorobiphenyl
 Concen: 0.52 ng
 RT: 12.98 min Scan# 761
 Delta R.T. -0.01 min
 Lab File: BM001521.D
 Acq: 02 Jun 2015 20:04

Tgt Ion: 172 Resp: 4700

Ion	Ratio	Lower	Upper
172	100		
171	36.0	29.4	44.0
170	24.3	20.2	30.4



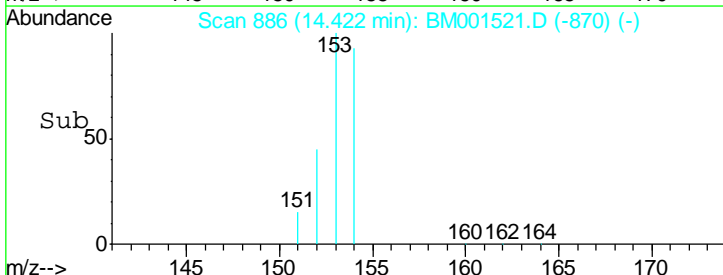
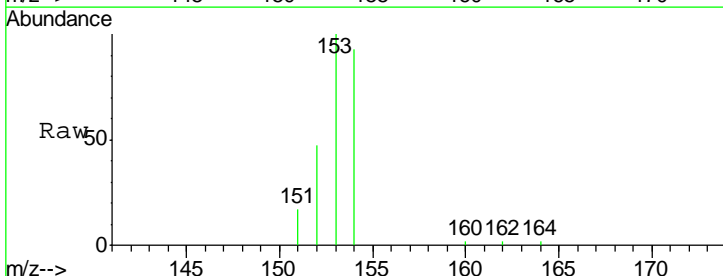
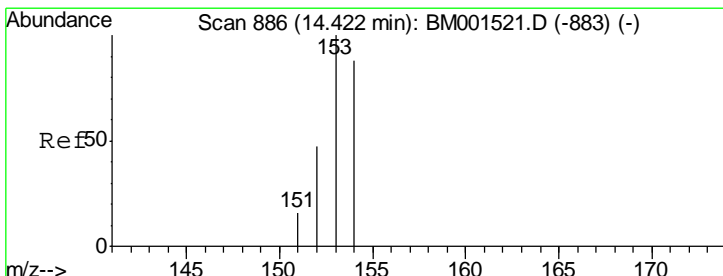
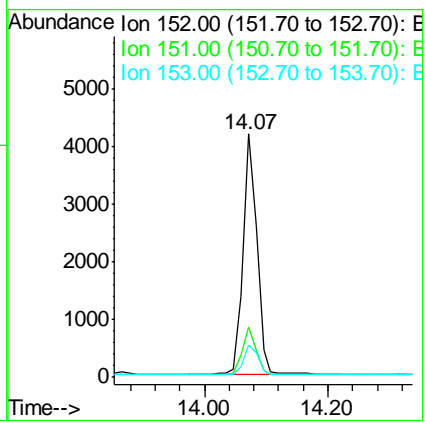


#15
 Acenaphthylene
 Concen: 0.49 ng
 RT: 14.07 min Scan# 857
 Delta R.T. -0.01 min
 Lab File: BM001521.D
 Acq: 02 Jun 2015 20:04

Instrument :
 BNA_M
 ClientSampled :
 SSTDICC0.5

Tgt Ion:152 Resp: 6421

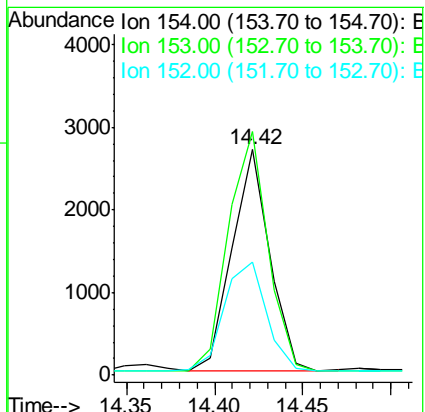
Ion	Ratio	Lower	Upper
152	100		
151	19.0	15.1	22.7
153	12.8	10.2	15.4

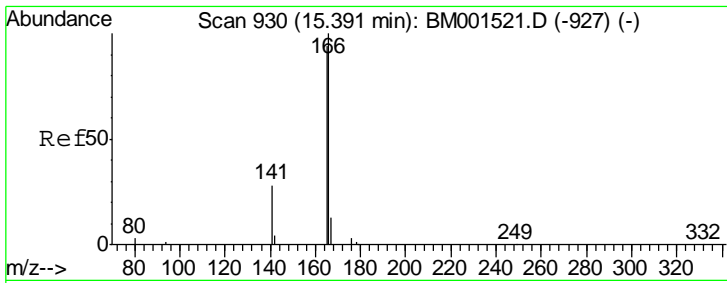


#16
 Acenaphthene
 Concen: 0.49 ng
 RT: 14.42 min Scan# 886
 Delta R.T. -0.01 min
 Lab File: BM001521.D
 Acq: 02 Jun 2015 20:04

Tgt Ion:154 Resp: 3978

Ion	Ratio	Lower	Upper
154	100		
153	114.5	91.4	137.2
152	55.4	44.0	66.0

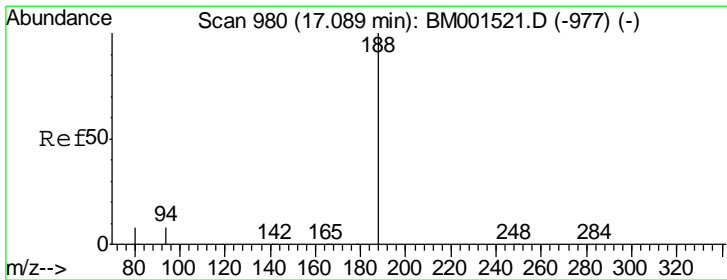
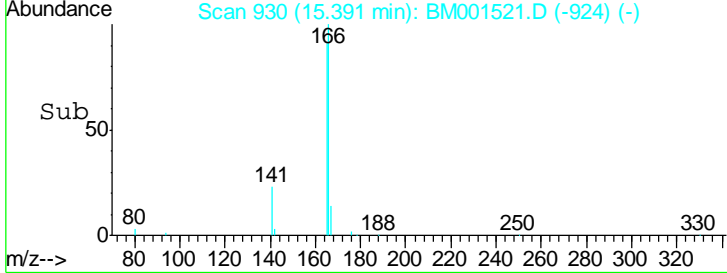
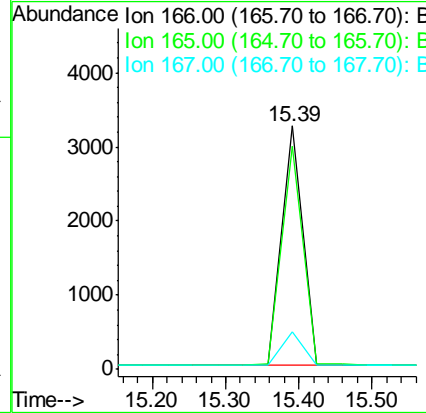
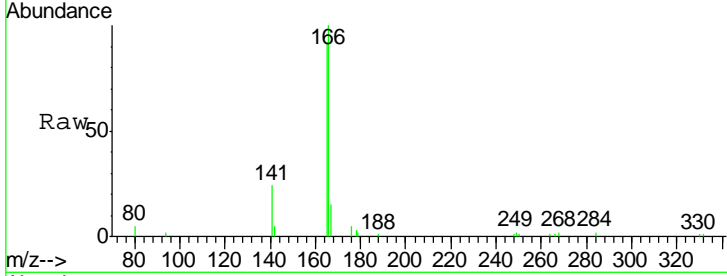




#17
 Fluorene
 Concen: 0.53 ng
 RT: 15.39 min Scan# 930
 Delta R.T. -0.01 min
 Lab File: BM001521.D
 Acq: 02 Jun 2015 20:04

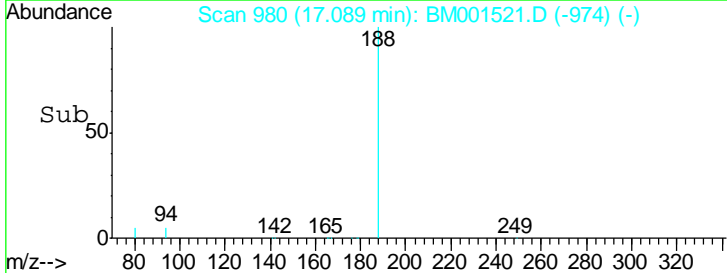
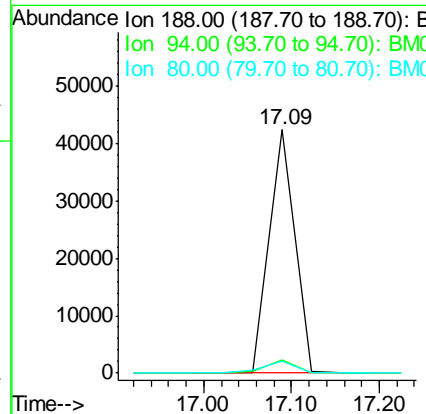
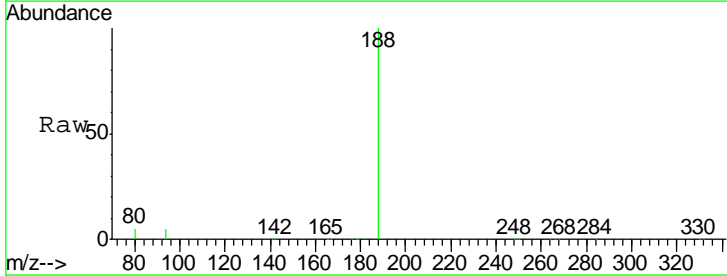
Instrument :
 BNA_M
 ClientSampleId :
 SSTDICC0.5

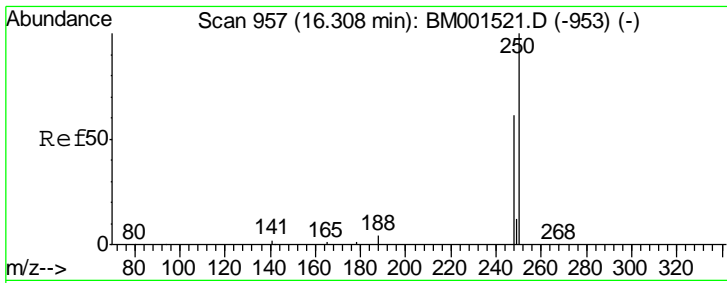
Tgt Ion	Resp	Lower	Upper
166	100		
165	91.8	72.6	108.8
167	14.0	10.9	16.3



#18
 Phenanthrene-d10
 Concen: 5.00 ng
 RT: 17.09 min Scan# 980
 Delta R.T. -0.01 min
 Lab File: BM001521.D
 Acq: 02 Jun 2015 20:04

Tgt Ion	Resp	Lower	Upper
188	100		
94	5.3	3.0	4.4#
80	4.8	2.5	3.7#

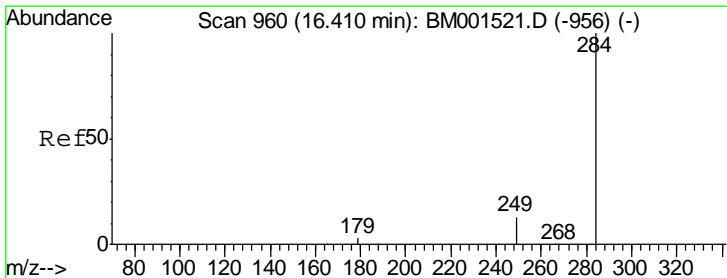
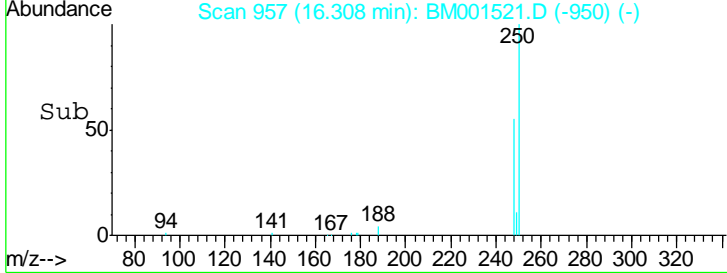
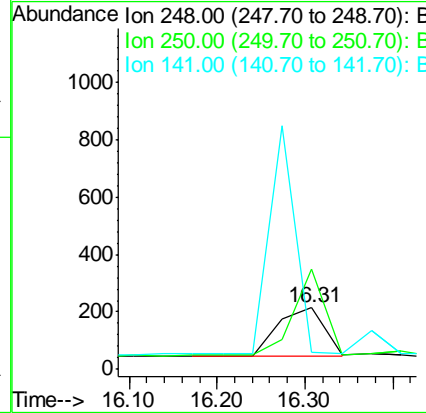
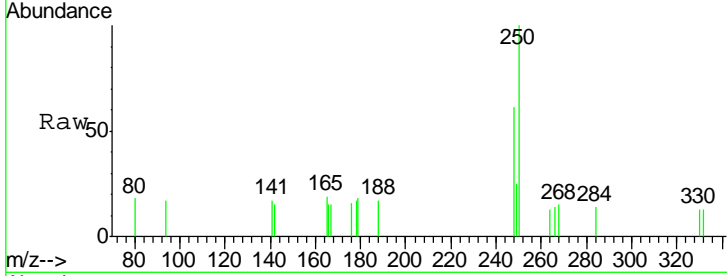




#19
 4-Bromophenyl-phenylether
 Concen: 0.42 ng
 RT: 16.31 min Scan# 957
 Delta R.T. 0.03 min
 Lab File: BM001521.D
 Acq: 02 Jun 2015 20:04

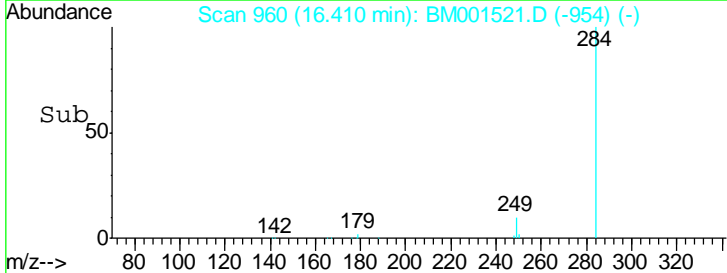
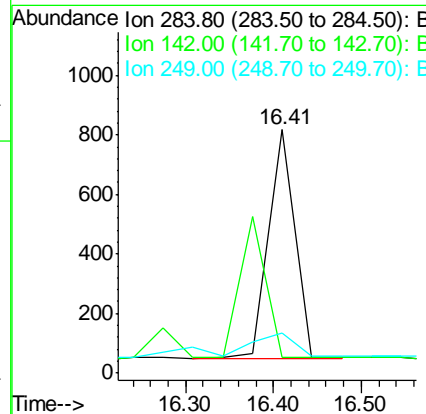
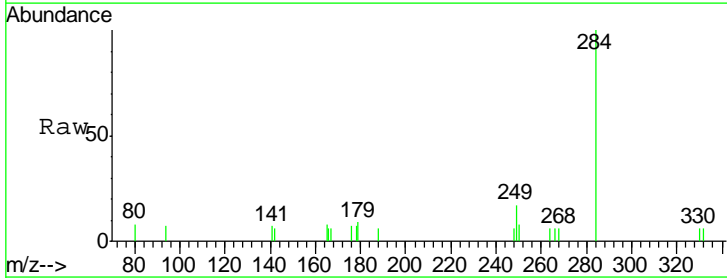
Instrument :
 BNA_M
 ClientSampleId :
 SSTDICC0.5

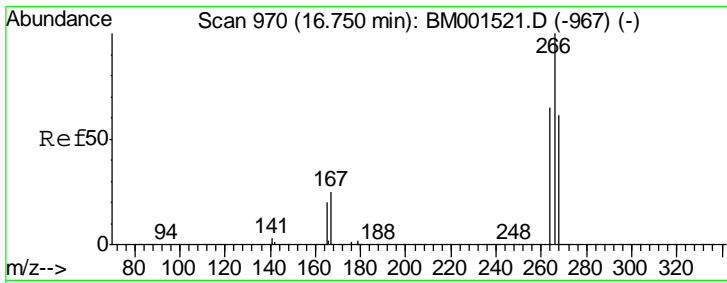
Tgt Ion	Ratio	Lower	Upper
248	100		
250	122.9	76.8	115.2#
141	0.0	57.7	86.5#



#20
 Hexachlorobenzene
 Concen: 0.53 ng
 RT: 16.41 min Scan# 960
 Delta R.T. -0.01 min
 Lab File: BM001521.D
 Acq: 02 Jun 2015 20:04

Tgt Ion	Ratio	Lower	Upper
284	100		
142	0.0	13.9	20.9#
249	20.3	39.0	58.4#

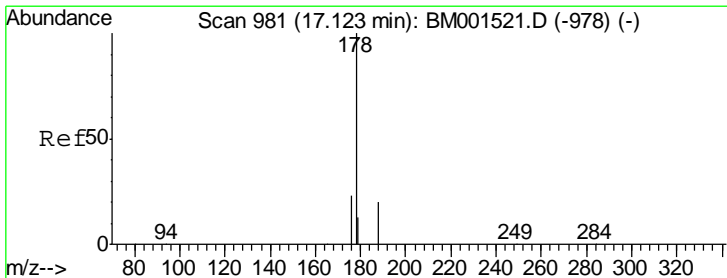
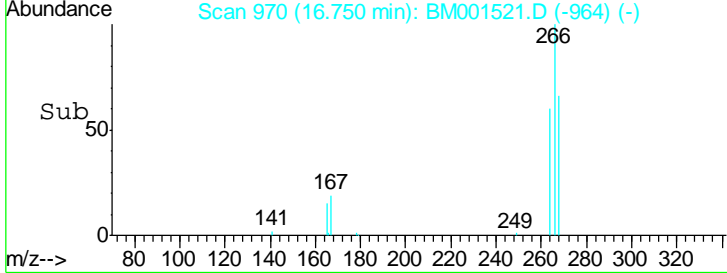
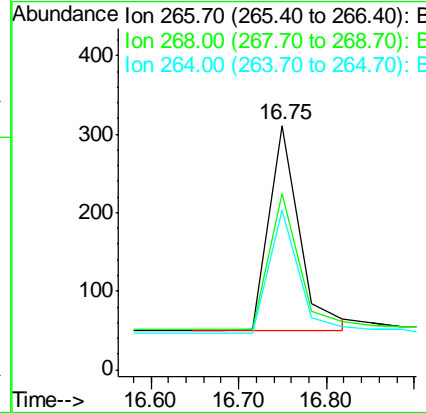
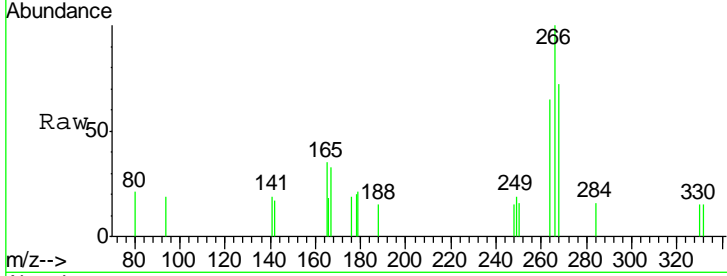




#21
 Pentachlorophenol
 Concen: 0.47 ng
 RT: 16.75 min Scan# 970
 Delta R.T. -0.01 min
 Lab File: BM001521.D
 Acq: 02 Jun 2015 20:04

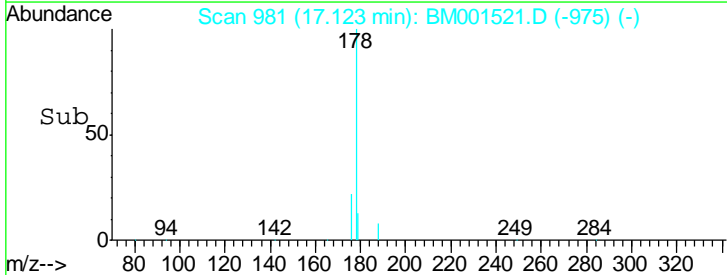
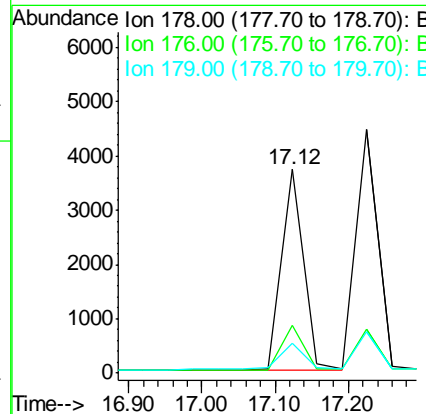
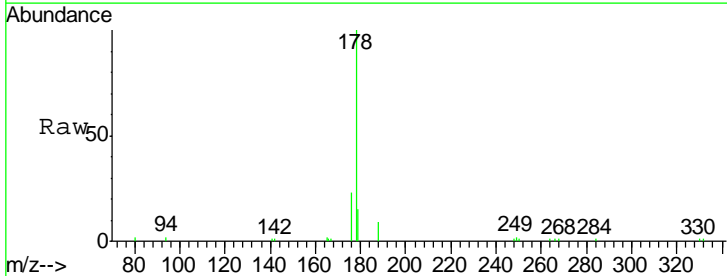
Instrument :
 BNA_M
 ClientSampleId :
 SSTDICC0.5

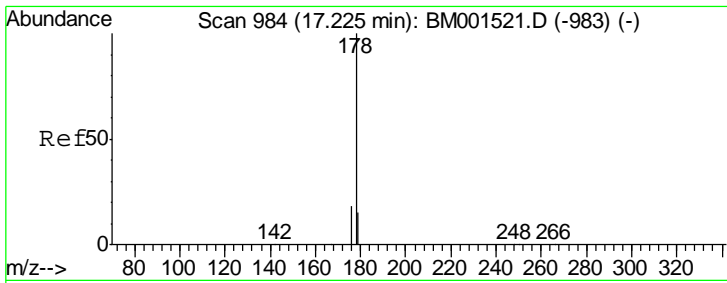
Tgt Ion	Resp	Lower	Upper
266	100		
268	72.0	63.0	94.4
264	65.3	52.8	79.2



#22
 Phenanthrene
 Concen: 0.47 ng
 RT: 17.12 min Scan# 981
 Delta R.T. -0.01 min
 Lab File: BM001521.D
 Acq: 02 Jun 2015 20:04

Tgt Ion	Resp	Lower	Upper
178	100		
176	21.8	16.8	25.2
179	14.5	11.0	16.4

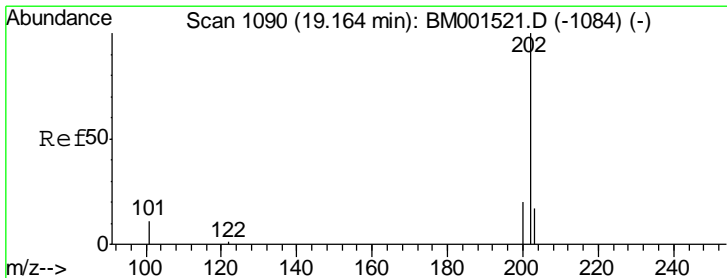
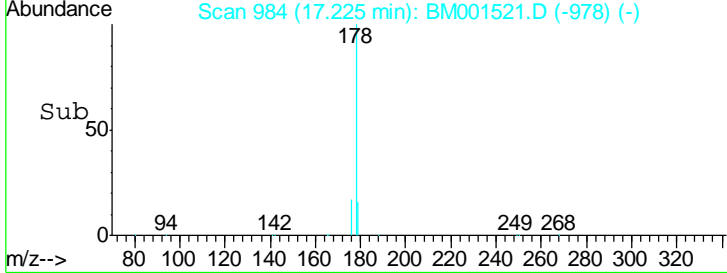
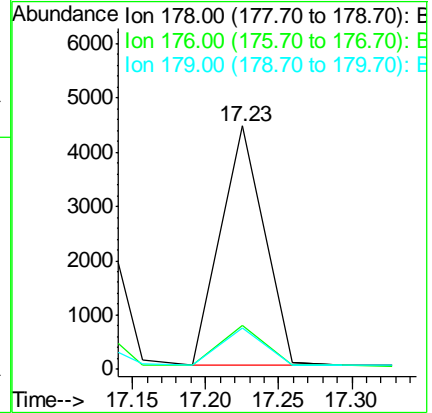
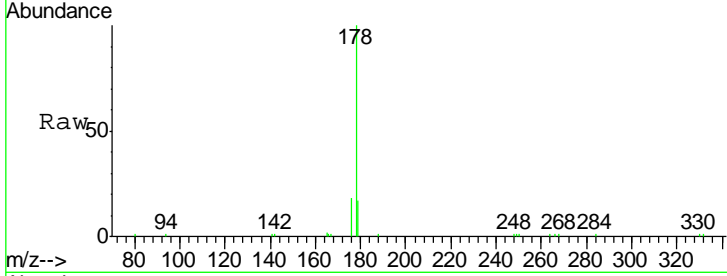




#23
 Anthracene
 Concen: 0.52 ng
 RT: 17.23 min Scan# 984
 Delta R.T. -0.01 min
 Lab File: BM001521.D
 Acq: 02 Jun 2015 20:04

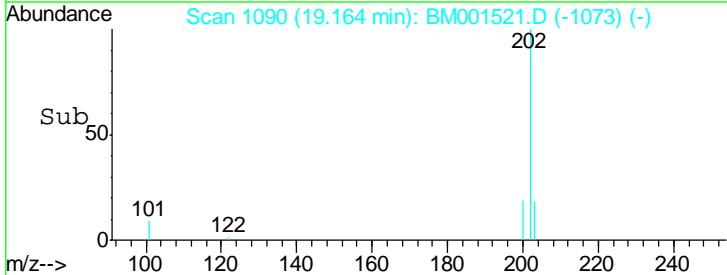
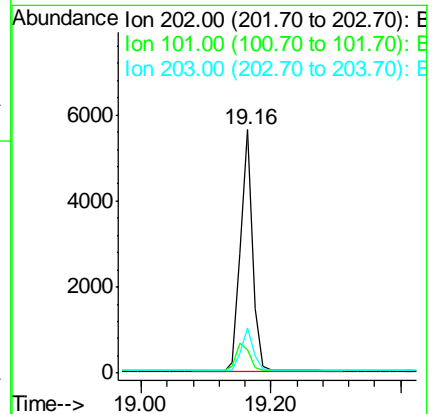
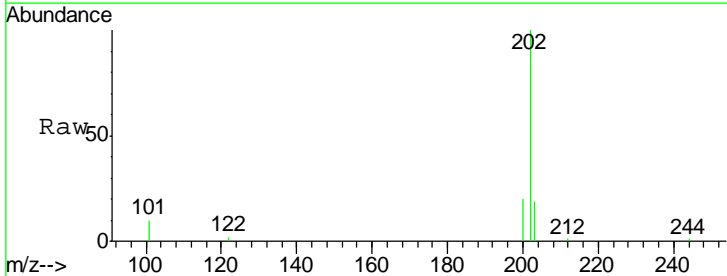
Instrument :
 BNA_M
 ClientSampleId :
 SSTDICC0.5

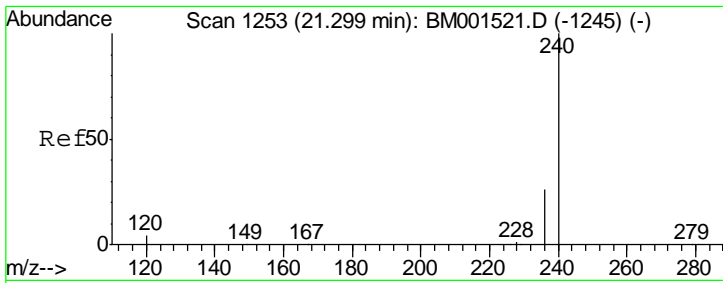
Tgt Ion	Resp	Lower	Upper
178	100		
176	16.7	13.1	19.7
179	15.9	12.8	19.2



#24
 Fluoranthene
 Concen: 0.47 ng
 RT: 19.16 min Scan# 1090
 Delta R.T. 0.00 min
 Lab File: BM001521.D
 Acq: 02 Jun 2015 20:04

Tgt Ion	Resp	Lower	Upper
202	100		
101	12.9	8.6	12.8#
203	17.8	13.8	20.6

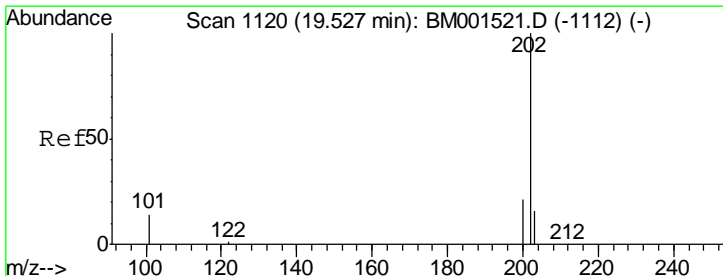
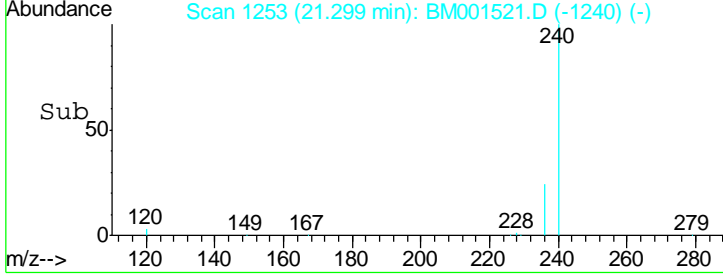
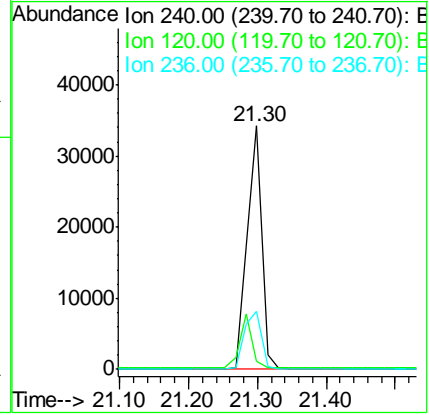
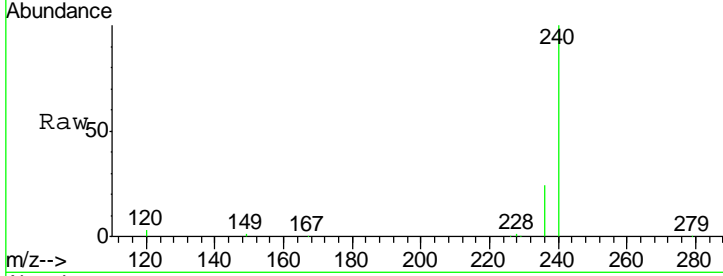




#25
 Chrysene-d12
 Concen: 5.00 ng
 RT: 21.30 min Scan# 1253
 Delta R.T. 0.00 min
 Lab File: BM001521.D
 Acq: 02 Jun 2015 20:04

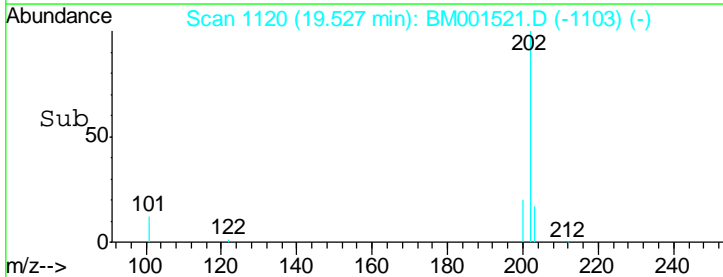
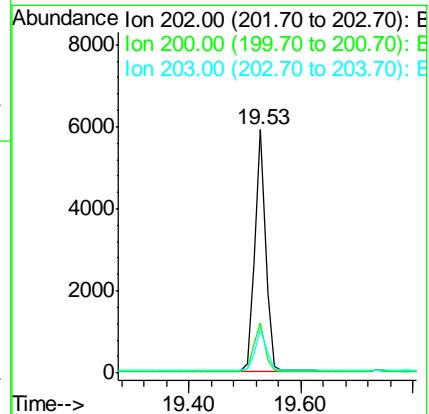
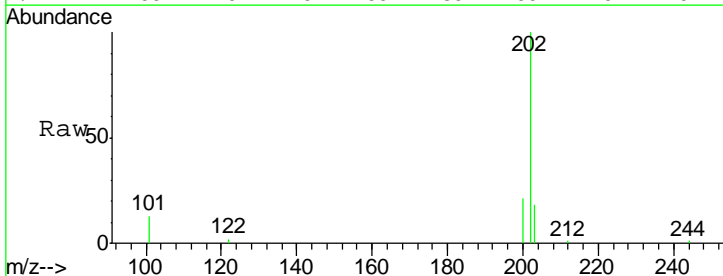
Instrument :
 BNA_M
 ClientSampled :
 SSTDICC0.5

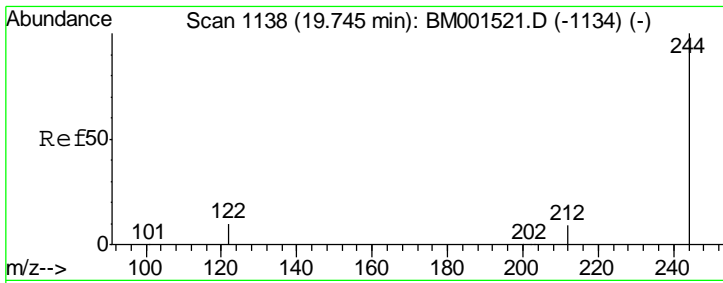
Tgt Ion	Resp	Lower	Upper
240	100		
120	3.1	9.7	14.5#
236	24.1	24.8	37.2#



#26
 Pyrene
 Concen: 0.51 ng
 RT: 19.53 min Scan# 1120
 Delta R.T. 0.00 min
 Lab File: BM001521.D
 Acq: 02 Jun 2015 20:04

Tgt Ion	Resp	Lower	Upper
202	100		
200	20.7	16.4	24.6
203	17.8	13.9	20.9



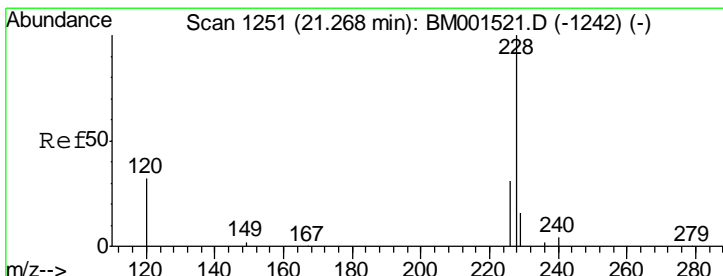
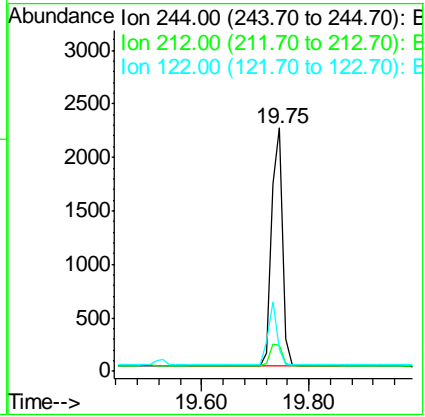
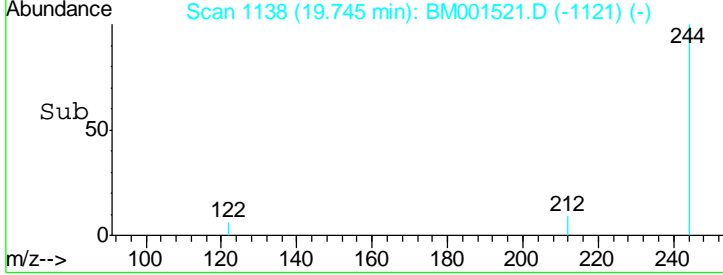
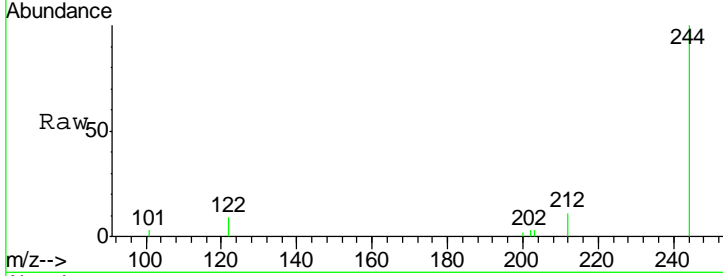


#27
 Terphenyl-d14
 Concen: 0.51 ng
 RT: 19.75 min Scan# 1138
 Delta R.T. 0.00 min
 Lab File: BM001521.D
 Acq: 02 Jun 2015 20:04

Instrument :
 BNA_M
ClientSampled :
 SSTDICC0.5

Tgt Ion: 244 Resp: 3162

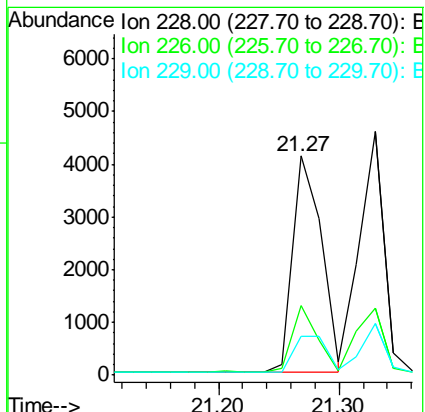
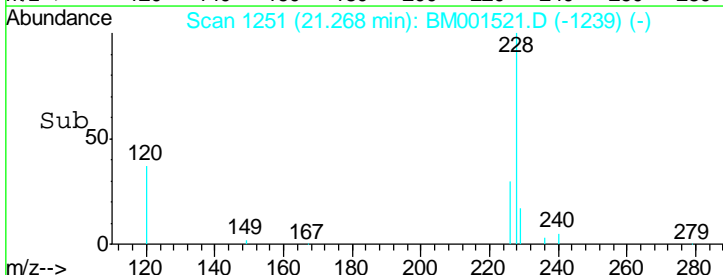
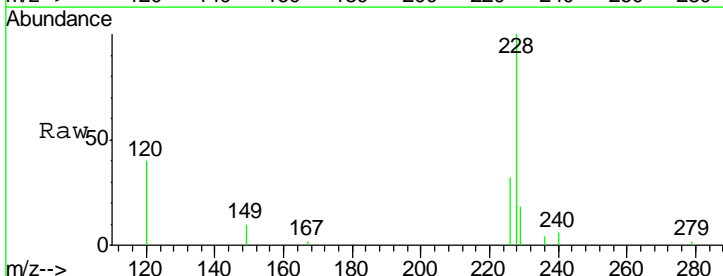
Ion	Ratio	Lower	Upper
244	100		
212	10.9	7.2	10.8#
122	8.9	5.1	7.7#

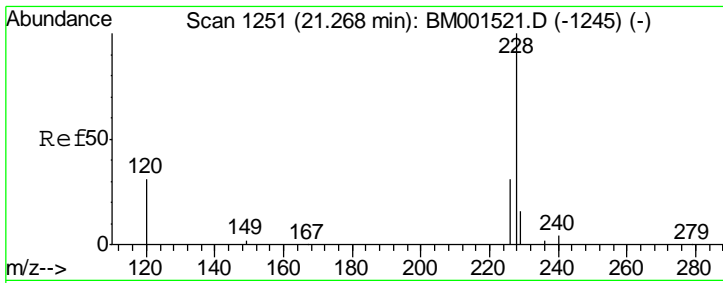


#28
 Benzo(a)anthracene
 Concen: 0.50 ng
 RT: 21.27 min Scan# 1251
 Delta R.T. -0.01 min
 Lab File: BM001521.D
 Acq: 02 Jun 2015 20:04

Tgt Ion: 228 Resp: 6881

Ion	Ratio	Lower	Upper
228	100		
226	31.8	21.9	32.9
229	17.5	15.1	22.7

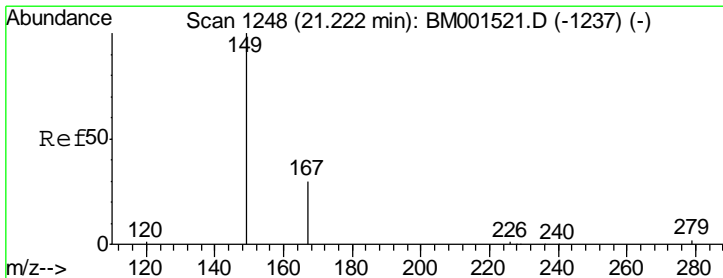
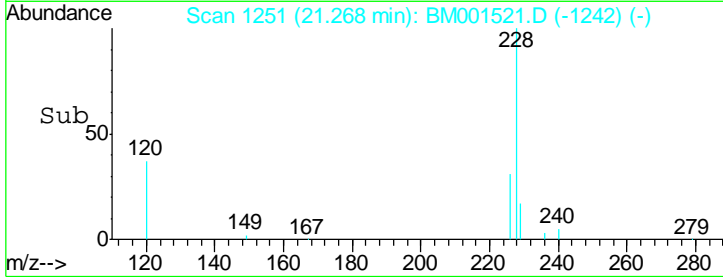
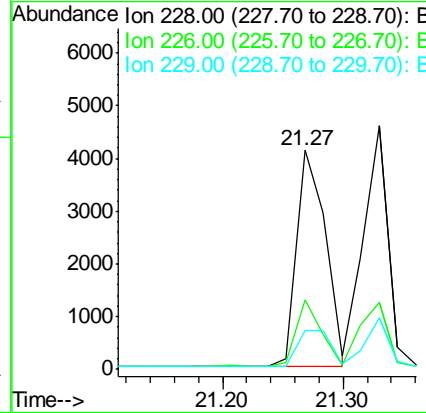
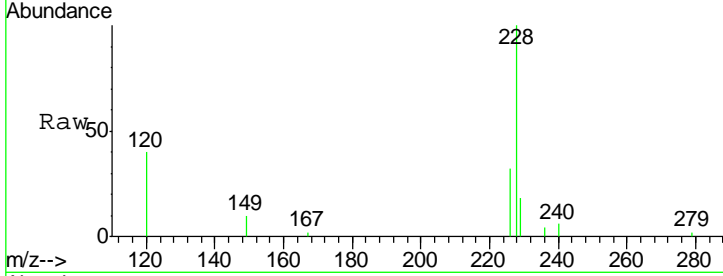




#29
 Chrysene
 Concen: 0.54 ng
 RT: 21.27 min Scan# 1251
 Delta R.T. -0.06 min
 Lab File: BM001521.D
 Acq: 02 Jun 2015 20:04

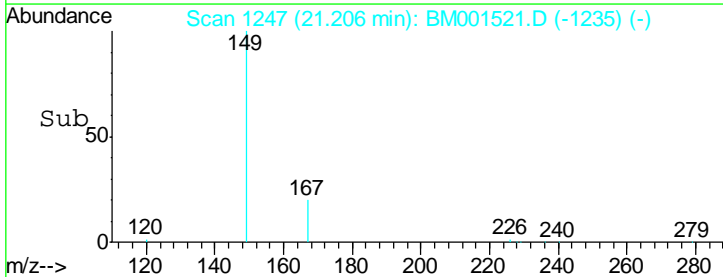
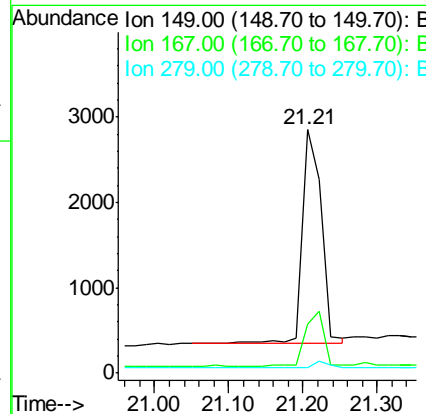
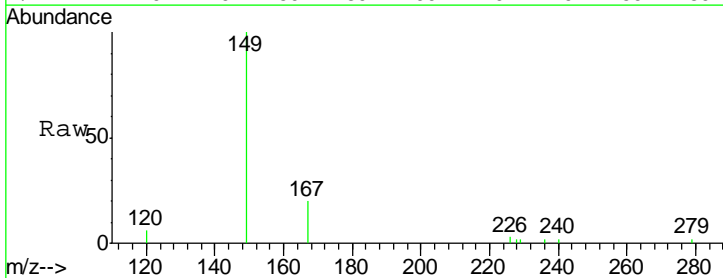
Instrument :
 BNA_M
 ClientSampleId :
 SSTDICC0.5

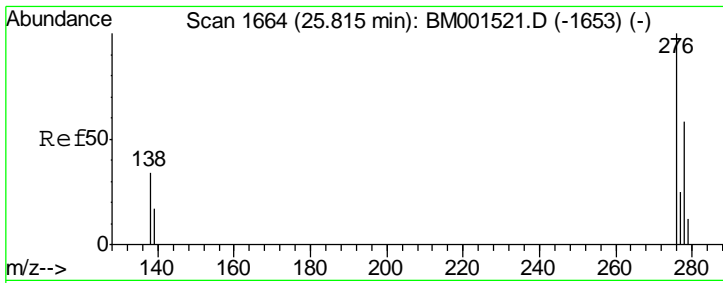
Tgt Ion	Resp	Lower	Upper
228	6881		
226	31.8	27.6	41.4
229	17.5	13.6	20.4



#30
 Bis(2-ethylhexyl)phthalate
 Concen: 0.39 ng
 RT: 21.21 min Scan# 1247
 Delta R.T. -0.01 min
 Lab File: BM001521.D
 Acq: 02 Jun 2015 20:04

Tgt Ion	Resp	Lower	Upper
149	4451		
167	24.3	21.0	31.6
279	2.3	2.2	3.2

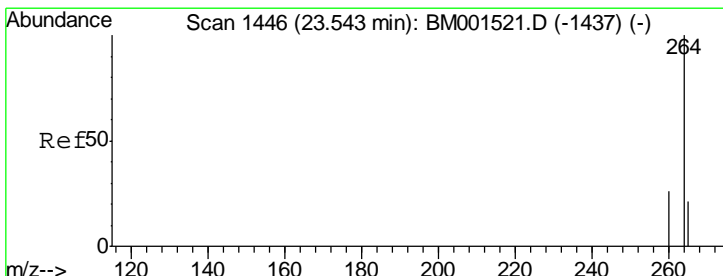
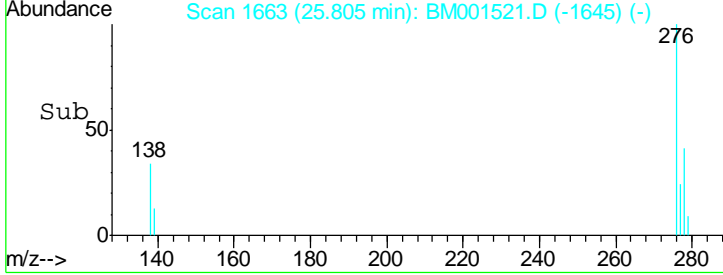
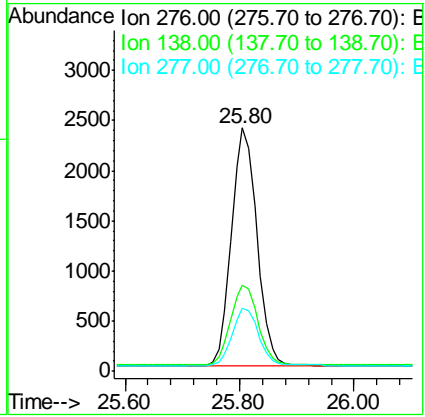
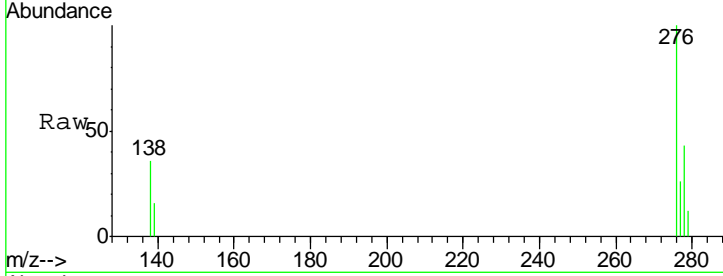




#31
 Indeno(1,2,3-cd)pyrene
 Concen: 0.54 ng
 RT: 25.80 min Scan# 1663
 Delta R.T. -0.01 min
 Lab File: BM001521.D
 Acq: 02 Jun 2015 20:04

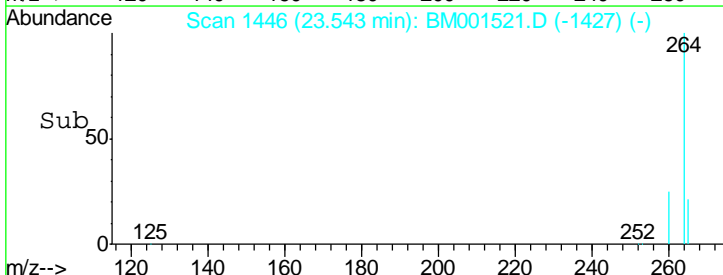
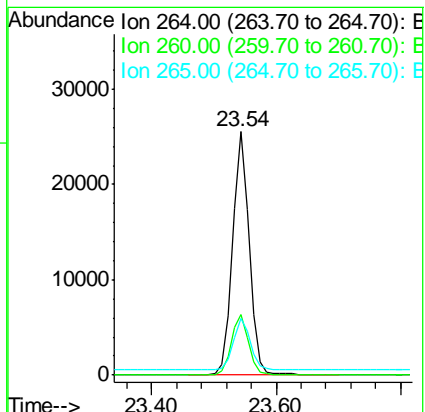
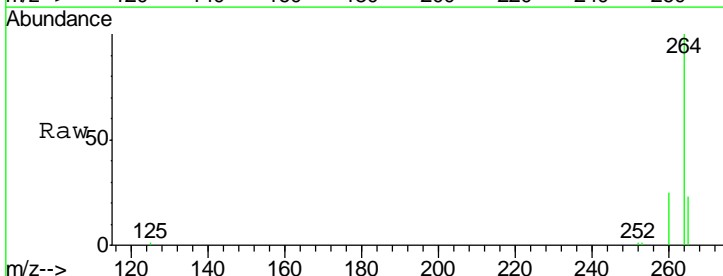
Instrument :
 BNA_M
ClientSampled :
 SSTDICC0.5

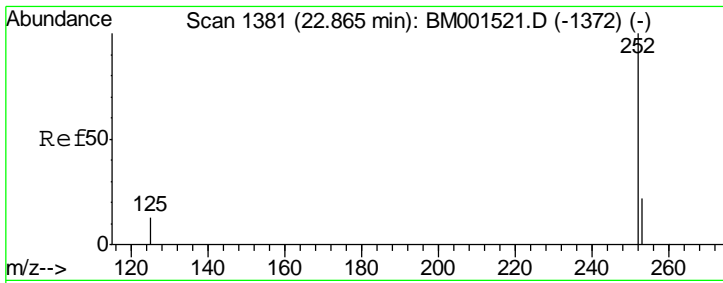
Tgt Ion	Resp	Lower	Upper
276	7433		
138	35.7	23.4	35.0#
277	24.5	19.5	29.3



#32
 Perylene-d12
 Concen: 5.00 ng
 RT: 23.54 min Scan# 1446
 Delta R.T. 0.00 min
 Lab File: BM001521.D
 Acq: 02 Jun 2015 20:04

Tgt Ion	Resp	Lower	Upper
264	47699		
260	25.1	20.1	30.1
265	23.2	17.1	25.7



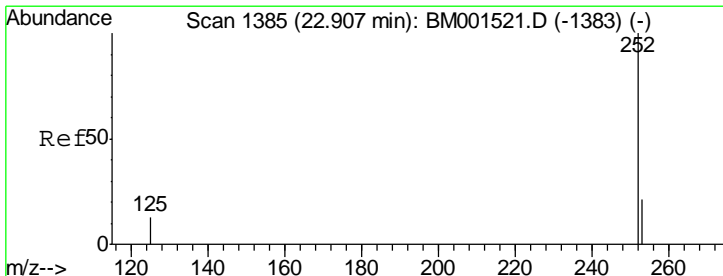
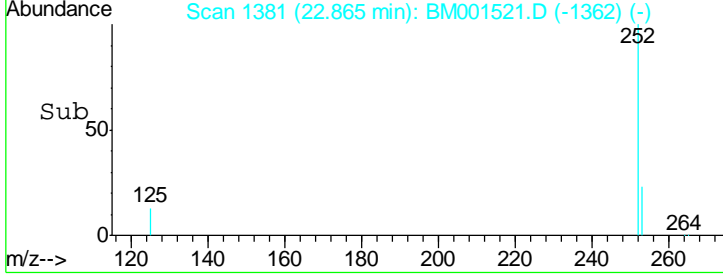
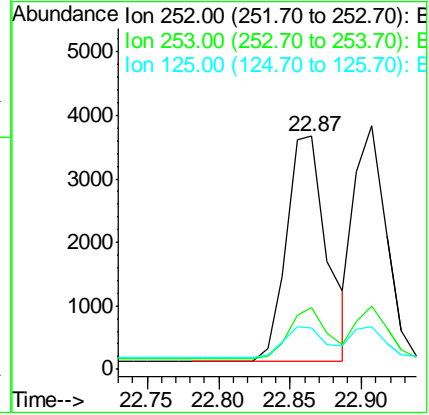
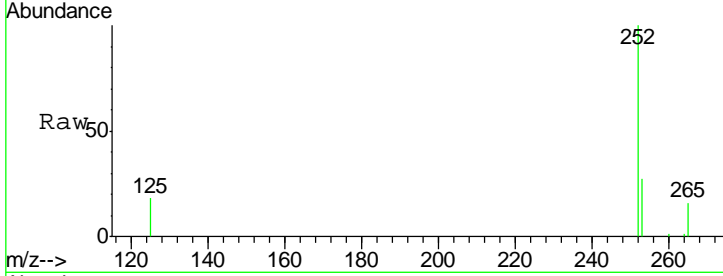


#33
 Benzo(b)fluoranthene
 Concen: 0.51 ng
 RT: 22.87 min Scan# 1381
 Delta R.T. 0.00 min
 Lab File: BM001521.D
 Acq: 02 Jun 2015 20:04

Instrument :
 BNA_M
 ClientSampleId :
 SSTDICC0.5

Tgt Ion: 252 Resp: 7088

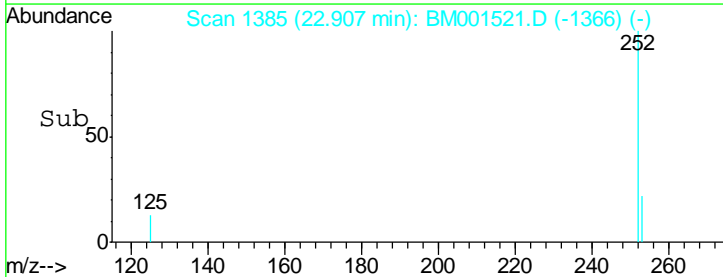
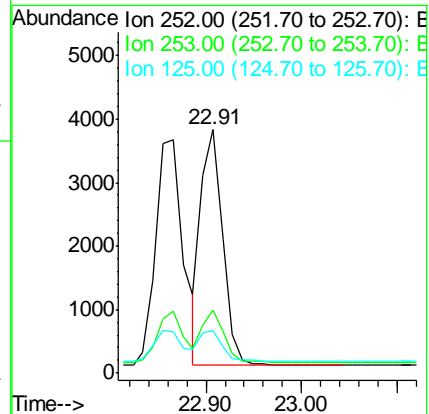
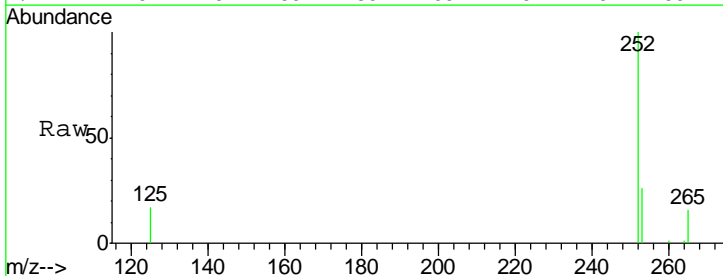
Ion	Ratio	Lower	Upper
252	100		
253	26.6	17.4	26.0#
125	17.6	10.2	15.4#

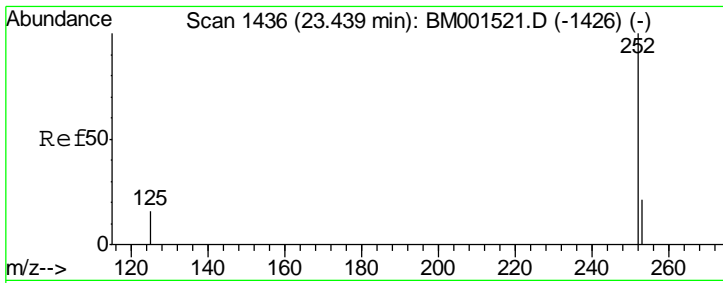


#34
 Benzo(k)fluoranthene
 Concen: 0.48 ng
 RT: 22.91 min Scan# 1385
 Delta R.T. 0.00 min
 Lab File: BM001521.D
 Acq: 02 Jun 2015 20:04

Tgt Ion: 252 Resp: 5857

Ion	Ratio	Lower	Upper
252	100		
253	26.1	17.6	26.4
125	17.4	9.7	14.5#

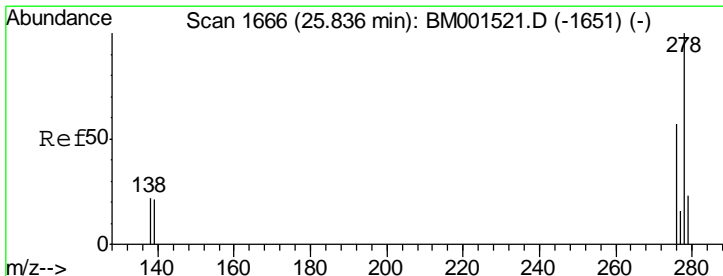
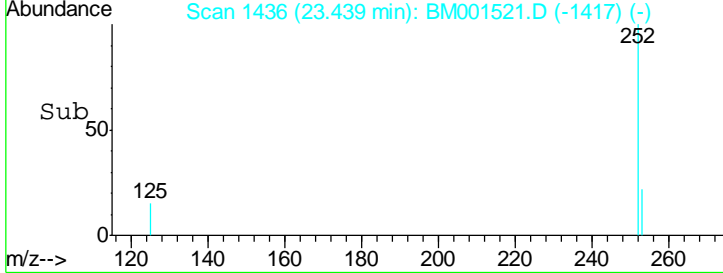
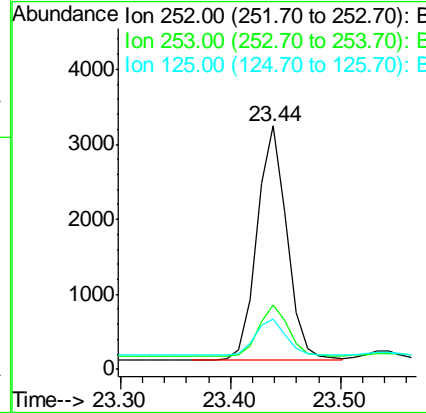
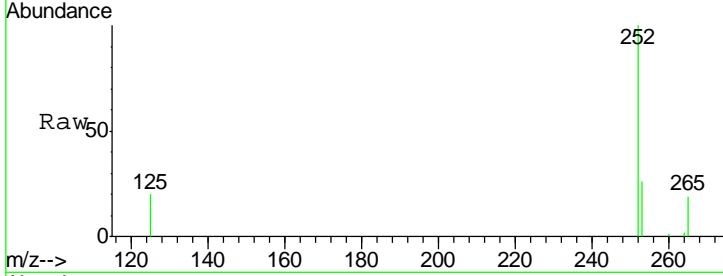




#35
 Benzo(a)pyrene
 Concen: 0.49 ng
 RT: 23.44 min Scan# 1436
 Delta R.T. 0.00 min
 Lab File: BM001521.D
 Acq: 02 Jun 2015 20:04

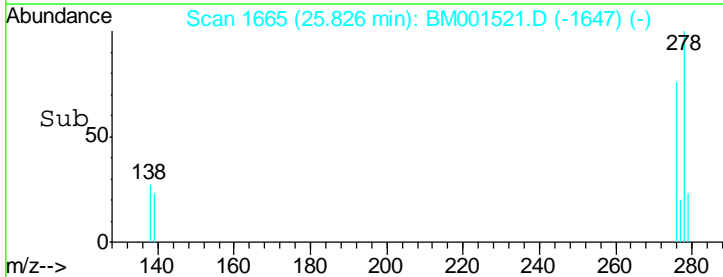
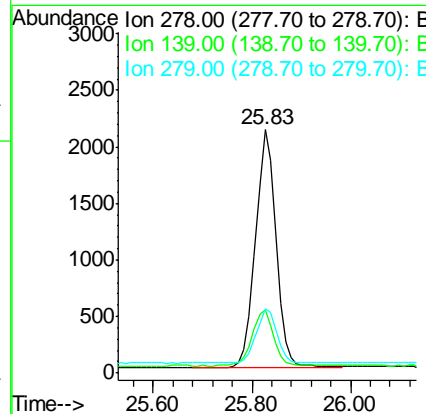
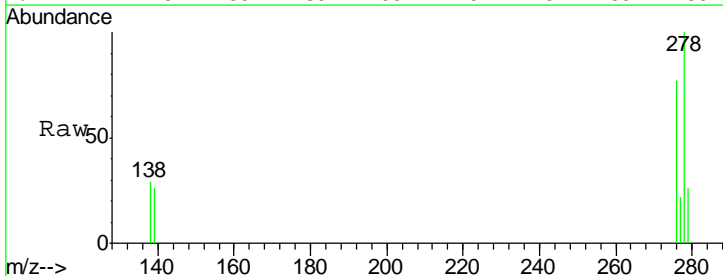
Instrument :
 BNA_M
 ClientSampled :
 SSTDICC0.5

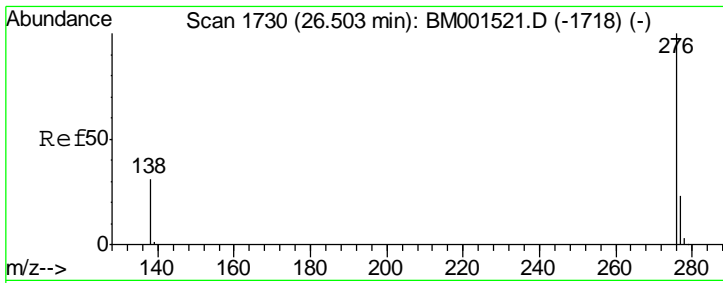
Tgt Ion	Resp	Lower	Upper
252	5835		
253	26.2	18.6	28.0
125	20.5	10.7	16.1



#36
 Dibenzo(a,h)anthracene
 Concen: 0.52 ng
 RT: 25.83 min Scan# 1665
 Delta R.T. -0.01 min
 Lab File: BM001521.D
 Acq: 02 Jun 2015 20:04

Tgt Ion	Resp	Lower	Upper
278	5889		
139	25.9	15.7	23.5
279	26.2	19.4	29.2





#37
 Benzo(g,h,i)perylene
 Concen: 0.52 ng
 RT: 26.50 min Scan# 1730
 Delta R.T. 0.00 min
 Lab File: BM001521.D
 Acq: 02 Jun 2015 20:04

Instrument :
 BNA_M
ClientSampleId :
 SSTDICC0.5

Tgt Ion: 276 Resp: 6231

Ion	Ratio	Lower	Upper
276	100		
277	26.2	19.8	29.6
138	30.6	20.2	30.2#

