

Data Path : Z:\svoasrv\HPCHEM1\BNA_M\Data\BM060222\
 Data File : BM035373.D
 Acq On : 02 Jun 2022 21:41
 Operator : CG/JU
 Sample : N3108-02
 Misc :
 ALS Vial : 8 Sample Multiplier: 1

Instrument :
 BNA_M
 ClientSampleId :
 NP-2

Integration Parameters: rteint.p
 Integrator: RTE
 Smoothing : ON Filtering: 5
 Sampling : 1 Min Area: 3 % of largest Peak
 Start Thrs: 0.2 Max Peaks: 100
 Stop Thrs : 0 Peak Location: TOP

If leading or trailing edge < 100 prefer < Baseline drop else tangent >
 Peak separation: 5

Method : Z:\svoasrv\HPCHEM1\BNA_M\Methods\8270-BM060222.M
 Title : ASP BNA STANDARDS FOR 5 POINT CALIBRATION

Signal : TIC: BM035373.D\data.ms

peak #	R.T. min	first scan	max scan	last scan	PK TY	peak height	corr. area	corr. % max.	% of total
1	5.434	393	399	414	rBV	1553154	2342096	28.10%	6.952%
2	7.034	663	671	687	rBV	1492006	2410846	28.93%	7.156%
3	7.851	801	810	818	rBV	385172	626696	7.52%	1.860%
4	9.010	998	1007	1024	rBV	959188	1652740	19.83%	4.906%
5	10.651	1278	1286	1297	rBV	514700	906864	10.88%	2.692%
6	13.116	1697	1705	1720	rBV	3020712	4645326	55.74%	13.788%
7	14.492	1932	1939	1953	rVB	809070	1228929	14.75%	3.648%
8	15.980	2185	2192	2210	rBV	2548118	3726948	44.72%	11.062%
9	17.233	2399	2405	2412	rBV	1113281	1629027	19.55%	4.835%
10	18.139	2554	2559	2576	rBV	455130	739725	8.88%	2.196%
11	19.415	2772	2776	2788	rBV	345063	550170	6.60%	1.633%
12	19.862	2846	2852	2861	rBV	6801619	8334502	100.00%	24.738%
13	21.133	3065	3068	3079	rBV	323139	426190	5.11%	1.265%
14	21.421	3112	3117	3122	rBV	1661240	2209531	26.51%	6.558%
15	23.774	3512	3517	3525	rVB2	1195238	2261696	27.14%	6.713%

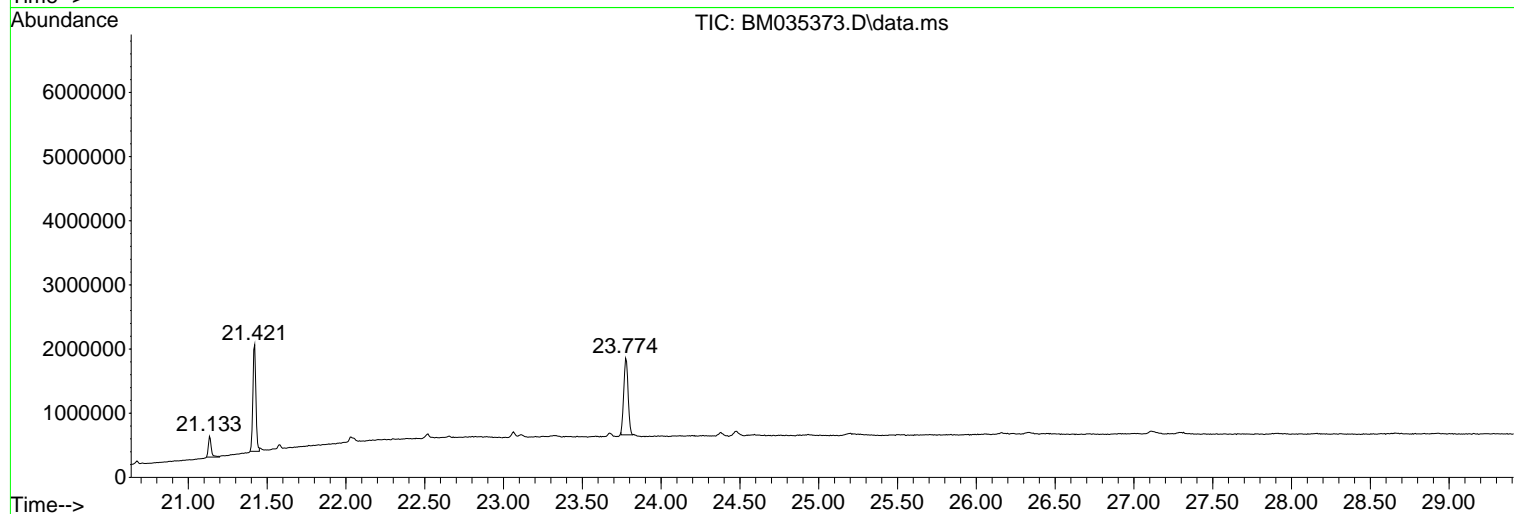
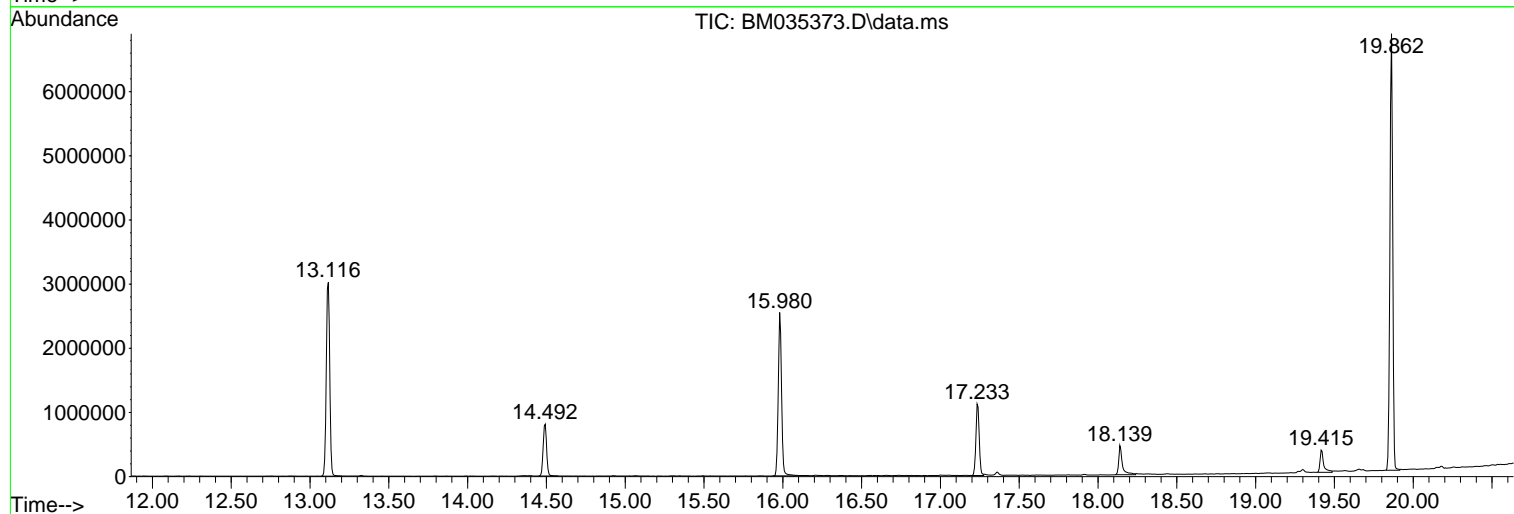
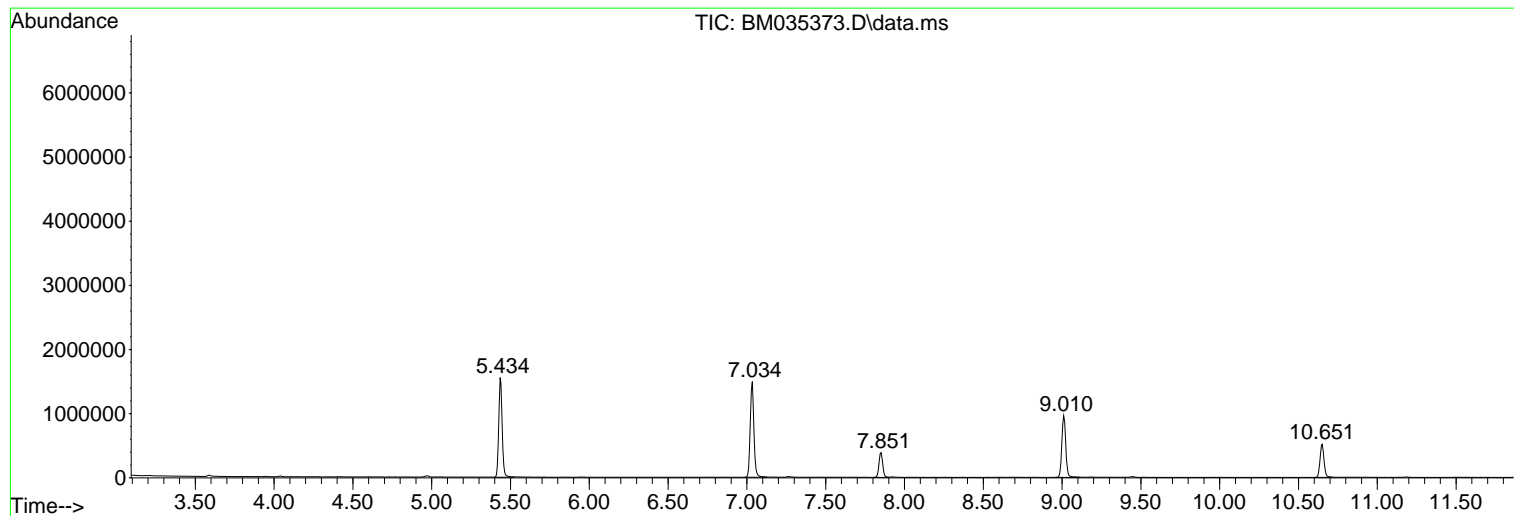
Sum of corrected areas: 33691286

Data Path : Z:\svoasrv\HPCHEM1\BNA_M\Data\BM060222\
Data File : BM035373.D
Acq On : 02 Jun 2022 21:41
Operator : CG/JU
Sample : N3108-02
Misc :
ALS Vial : 8 Sample Multiplier: 1

Instrument :
BNA_M
ClientSampleId :
NP-2

Quant Method : Z:\svoasrv\HPCHEM1\BNA_M\Methods\8270-BM060222.M
Quant Title : ASP BNA STANDARDS FOR 5 POINT CALIBRATION

TIC Library :
TIC Integration Parameters: rteint.p



Library Search Compound Report

Data Path : Z:\svoasrv\HPCHEM1\BNA_M\Data\BM060222\
Data File : BM035373.D
Acq On : 02 Jun 2022 21:41
Operator : CG/JU
Sample : N3108-02
Misc :
ALS Vial : 8 Sample Multiplier: 1

Instrument :
BNA_M
ClientSampleId :
NP-2

Quant Method : Z:\svoasrv\HPCHEM1\BNA_M\Methods\8270-BM060222.M
Quant Title : ASP BNA STANDARDS FOR 5 POINT CALIBRATION

TIC Library :
TIC Integration Parameters: rteint.p

No Library Search Compounds Detected

Data Path : Z:\svoasrv\HPCHEM1\BNA_M\Data\BM060222\
Data File : BM035373.D
Acq On : 02 Jun 2022 21:41
Operator : CG/JU
Sample : N3108-02
Misc :
ALS Vial : 8 Sample Multiplier: 1

Instrument :
BNA_M
ClientSampleId :
NP-2

Quant Method : Z:\svoasrv\HPCHEM1\BNA_M\Methods\8270-BM060222.M
Quant Title : ASP BNA STANDARDS FOR 5 POINT CALIBRATION

TIC Library :
TIC Integration Parameters: rteint.p

TIC Top Hit name	RT	EstConc	Units	Response	#	RT	Resp	Conc
------------------	----	---------	-------	----------	---	----	------	------
