

Data Path : Z:\HPCHEM1\BNA\_M\DATA\BM060815\  
 Data File : BM001621.D  
 Acq On : 09 Jun 2015 18:58  
 Operator : TP/IZ  
 Sample : PB83893BS  
 Misc :  
 ALS Vial : 24 Sample Multiplier: 1

Instrument :  
 BNA\_M  
 ClientSampleId :  
 PB83893BS

Quant Time: Jun 10 03:30:18 2015  
 Quant Method : Z:\HPCHEM1\BNA\_M\METHODS\SIM-BM060815.M  
 Quant Title : ASP BNA STANDARDS FOR 5 POINT CALIBRATION  
 QLast Update : Wed Jun 10 03:26:36 2015  
 Response via : Initial Calibration

Internal Standards	R.T.	QIon	Response	Conc	Units	Dev(Min)
1) 1,4-Dichlorobenzene-d4	7.69	152	20226	5.00	ng	0.00
6) Naphthalene-d8	10.47	136	74374	5.00	ng	0.00
12) Acenaphthene-d10	14.35	164	35488	5.00	ng	0.00
18) Phenanthrene-d10	17.09	188	40316	5.00	ng	0.00
25) Chrysene-d12	21.28	240	59851	5.00	ng	0.00
32) Perylene-d12	23.51	264	54131	5.00	ng	-0.01

## System Monitoring Compounds

4) 2-Fluorophenol	5.27	112	44213	9.61	ng	0.00
5) Phenol-d6	6.84	99	56758	10.04	ng	0.00
7) Nitrobenzene-d5	8.85	82	52254	9.97	ng	0.00
13) 2,4,6-Tribromophenol	15.83	330	17612	10.31	ng	0.00
14) 2-Fluorobiphenyl	12.96	172	99292	8.60	ng	0.00
27) Terphenyl-d14	19.72	244	70677	9.05	ng	0.00

## Target Compounds

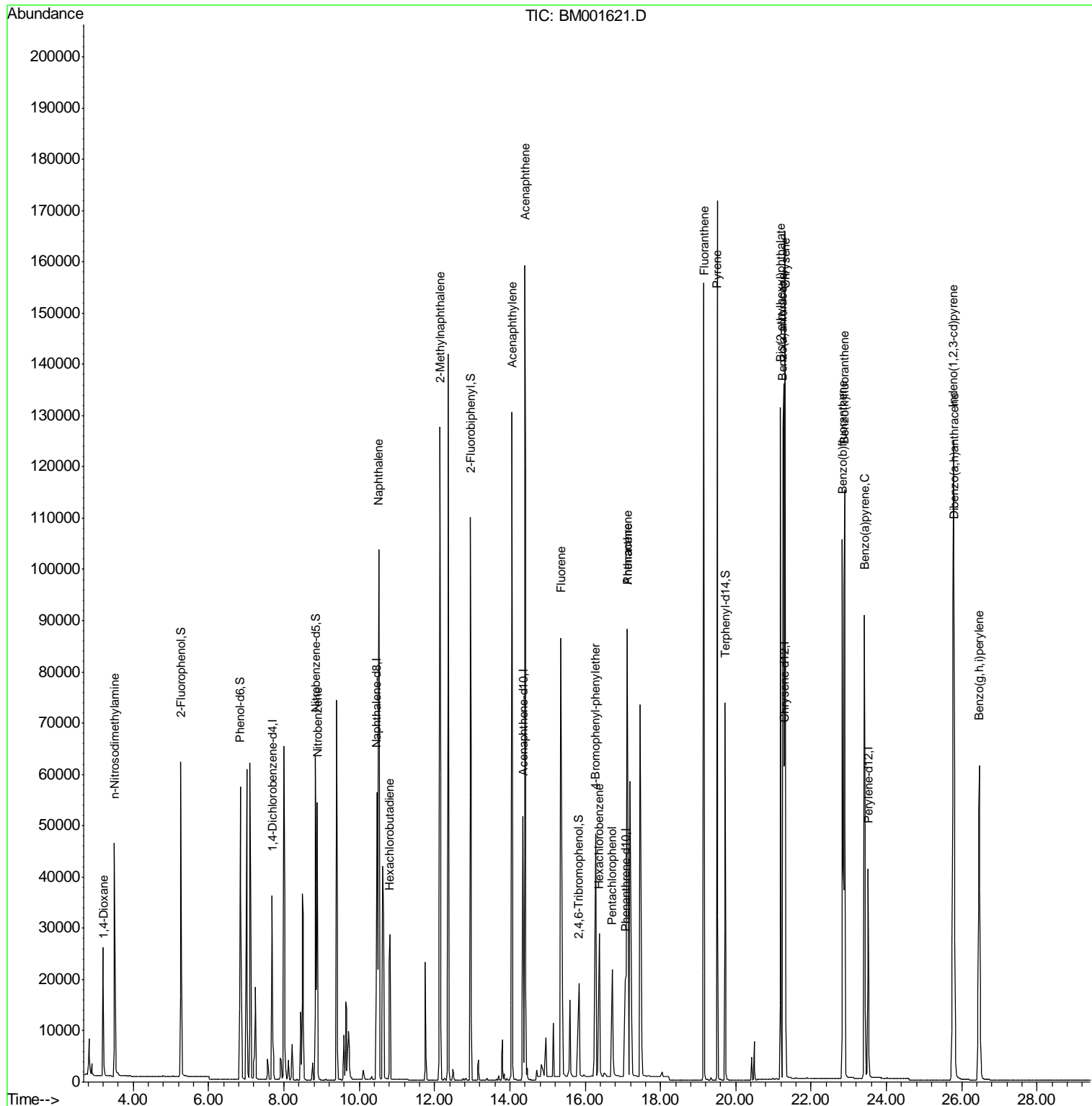
Target Compounds	R.T.	QIon	Response	Conc	Units	Qvalue
2) 1,4-Dioxane	3.21	88	17410	7.82	ng	92
3) n-Nitrosodimethylamine	3.51	42	29833	9.38	ng	99
8) Nitrobenzene	8.89	77	56914	10.12	ng	98
9) Naphthalene	10.52	128	147592	8.86	ng	98
10) Hexachlorobutadiene	10.82	225	24764	8.64	ng	99
11) 2-Methylnaphthalene	12.15	142	93827	9.20	ng	94
15) Acenaphthylene	14.06	152	155558	9.76	ng	100
16) Acenaphthene	14.40	154	91464	9.13	ng	96
17) Fluorene	15.36	166	64523	9.51	ng	95
19) 4-Bromophenyl-phenylether	16.27	248	41999	10.98	ng	87
20) Hexachlorobenzene	16.38	284	23453	11.22	ng	# 73
21) Pentachlorophenol	16.72	266	10068	14.39	ng	92
22) Phenanthrene	17.12	178	142037	9.87	ng	99
23) Anthracene	17.12	178	245192	28.71	ng	# 79
24) Fluoranthene	19.15	202	166853	10.70	ng	100
26) Pyrene	19.52	202	173592	8.95	ng	100
28) Benzo(a)anthracene	21.25	228	151331	8.66	ng	98
29) Chrysene	21.31	228	145749	8.82	ng	98
30) Bis(2-ethylhexyl)phthalate	21.19	149	112554	11.14	ng	99
31) Indeno(1,2,3-cd)pyrene	25.77	276	146256	8.71	ng	99
33) Benzo(b)fluoranthene	22.83	252	155908	9.58	ng	97
34) Benzo(k)fluoranthene	22.89	252	125997	8.03	ng	96
35) Benzo(a)pyrene	23.42	252	128498	8.94	ng	96
36) Dibenzo(a,h)anthracene	25.79	278	113846	8.67	ng	94
37) Benzo(g,h,i)perylene	26.46	276	117936	8.33	ng	99

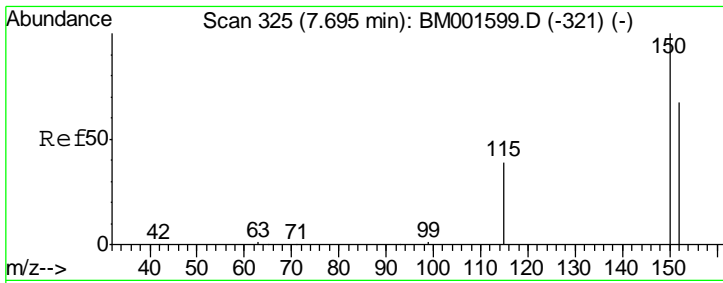
(#) = qualifier out of range (m) = manual integration (+) = signals summed

Data Path : Z:\HPCHEM1\BNA\_M\DATA\BM060815\  
 Data File : BM001621.D  
 Acq On : 09 Jun 2015 18:58  
 Operator : TP/IZ  
 Sample : PB83893BS  
 Misc :  
 ALS Vial : 24 Sample Multiplier: 1

Instrument :  
 BNA\_M  
 Client Sampled :  
 PB83893BS

Quant Time: Jun 10 03:30:18 2015  
 Quant Method : Z:\HPCHEM1\BNA\_M\METHODS\SIM-BM060815.M  
 Quant Title : ASP BNA STANDARDS FOR 5 POINT CALIBRATION  
 QLast Update : Wed Jun 10 03:26:36 2015  
 Response via : Initial Calibration



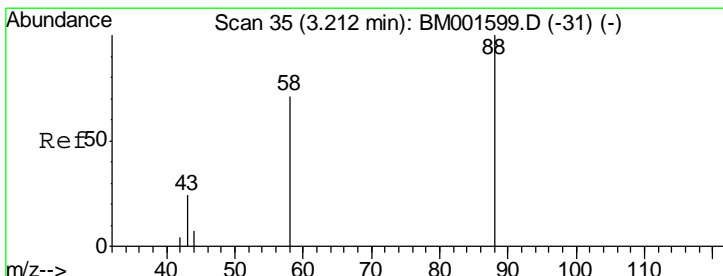
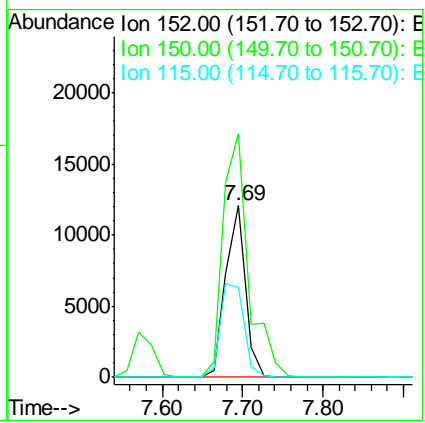
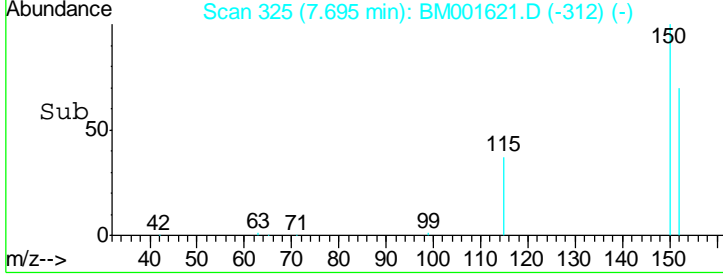
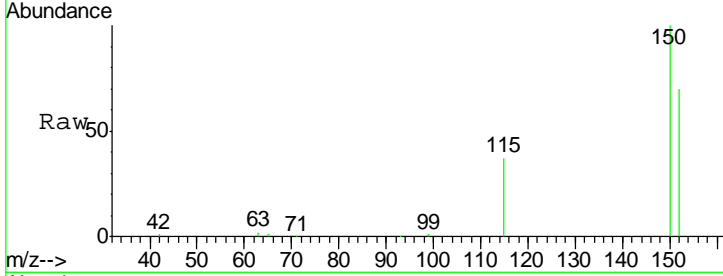


#1  
 1,4-Dichlorobenzene-d4  
 Concen: 5.00 ng  
 RT: 7.69 min Scan# 325  
 Delta R.T. -0.00 min  
 Lab File: BM001621.D  
 Acq: 09 Jun 2015 18:58

**Instrument :**  
 BNA\_M  
**ClientSampled :**  
 PB83893BS

Tgt Ion: 152 Resp: 20226

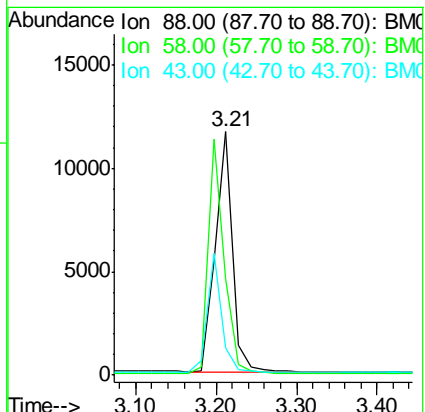
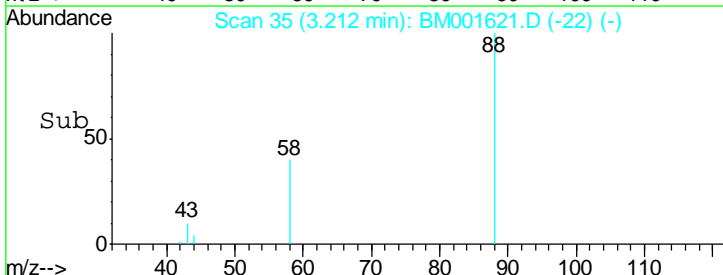
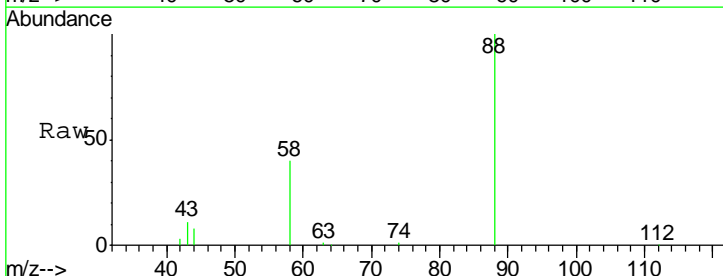
Ion	Ratio	Lower	Upper
152	100		
150	142.1	120.1	180.1
115	52.4	47.0	70.6

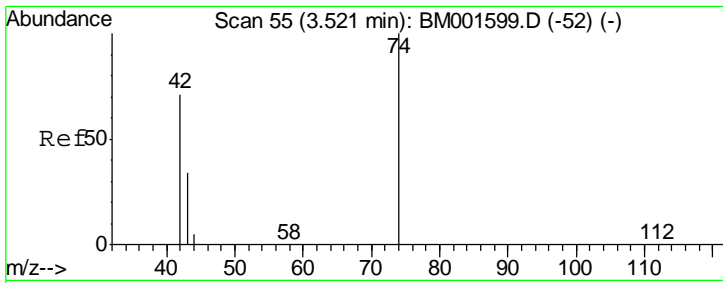


#2  
 1,4-Dioxane  
 Concen: 7.82 ng  
 RT: 3.21 min Scan# 35  
 Delta R.T. -0.00 min  
 Lab File: BM001621.D  
 Acq: 09 Jun 2015 18:58

Tgt Ion: 88 Resp: 17410

Ion	Ratio	Lower	Upper
88	100		
58	91.0	65.5	98.3
43	41.6	32.2	48.2

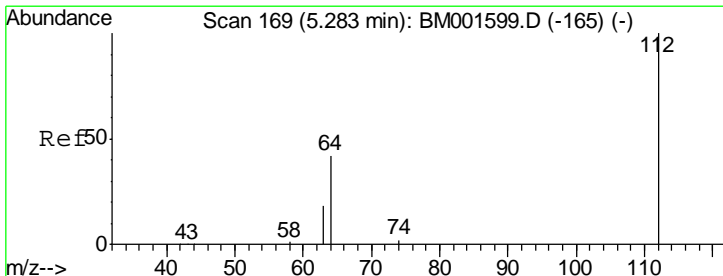
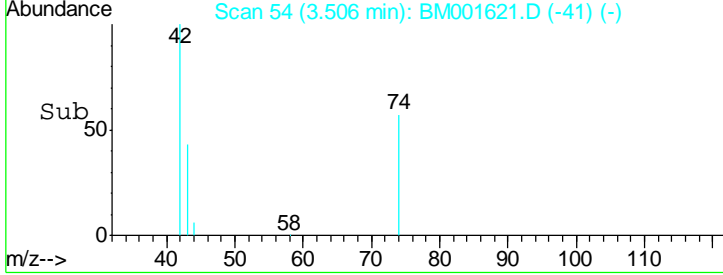
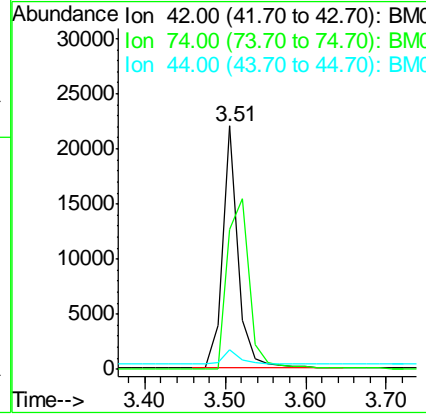
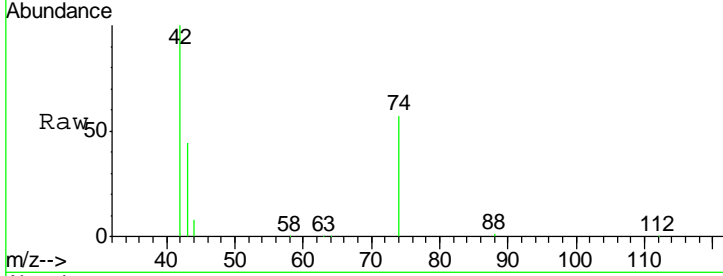




#3  
 n-Nitrosodimethylamine  
 Concen: 9.38 ng  
 RT: 3.51 min Scan# 54  
 Delta R.T. -0.00 min  
 Lab File: BM001621.D  
 Acq: 09 Jun 2015 18:58

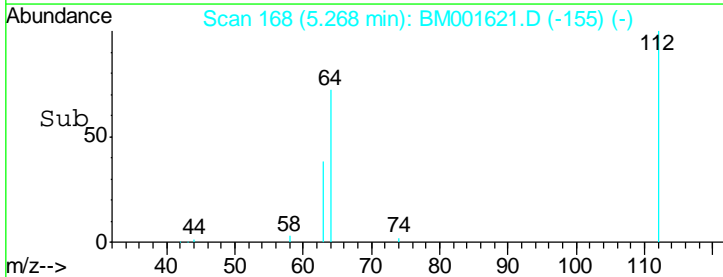
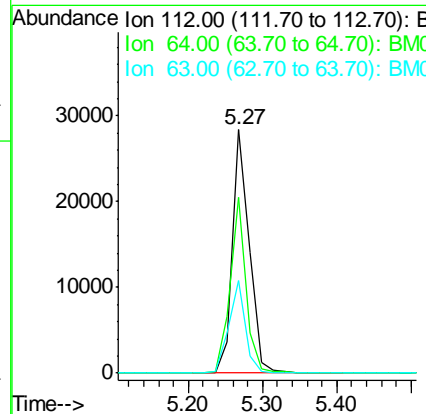
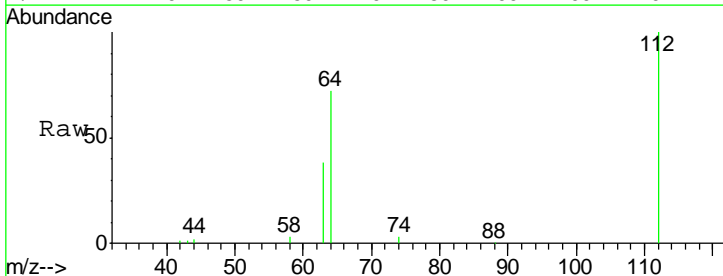
**Instrument :**  
 BNA\_M  
**ClientSampled :**  
 PB83893BS

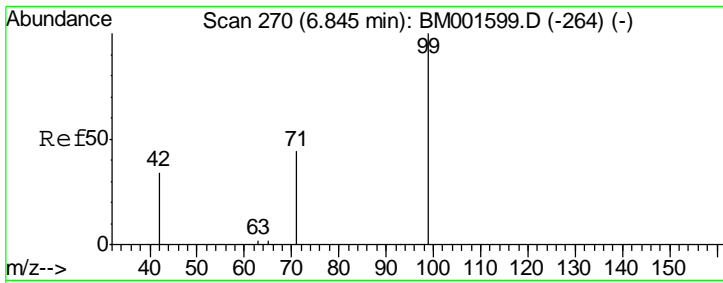
Tgt Ion	Resp	Ion Ratio	Lower	Upper
42	29833	100		
74		99.0	79.5	119.3
44		6.3	5.7	8.5



#4  
 2-Fluorophenol  
 Concen: 9.61 ng  
 RT: 5.27 min Scan# 168  
 Delta R.T. -0.00 min  
 Lab File: BM001621.D  
 Acq: 09 Jun 2015 18:58

Tgt Ion	Resp	Ion Ratio	Lower	Upper
112	44213	100		
64		67.9	54.8	82.2
63		37.0	30.5	45.7

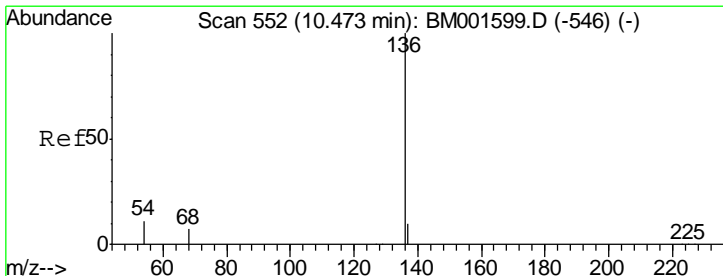
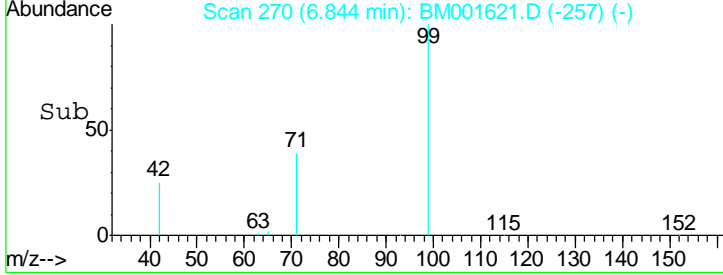
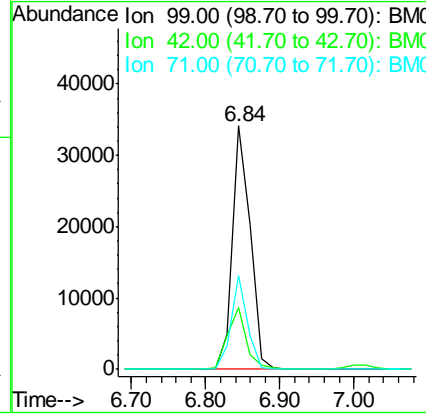
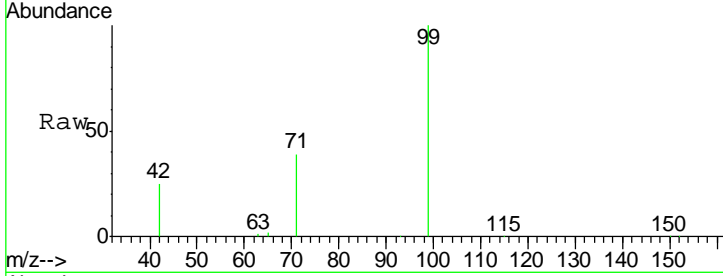




#5  
 Phenol-d6  
 Concen: 10.04 ng  
 RT: 6.84 min Scan# 270  
 Delta R.T. -0.00 min  
 Lab File: BM001621.D  
 Acq: 09 Jun 2015 18:58

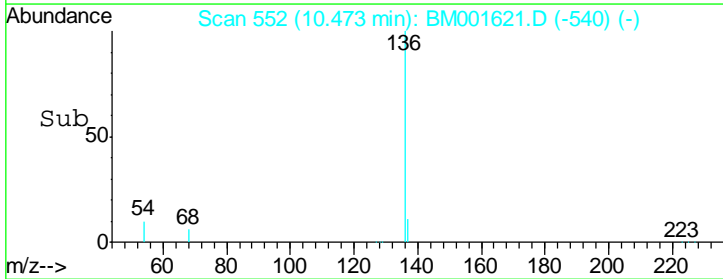
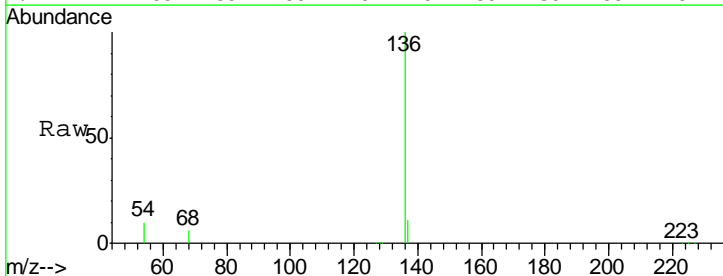
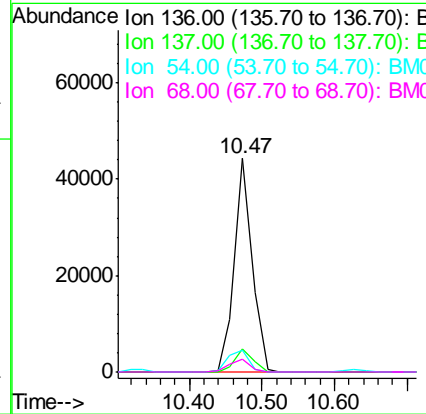
**Instrument :**  
 BNA\_M  
**ClientSampled :**  
 PB83893BS

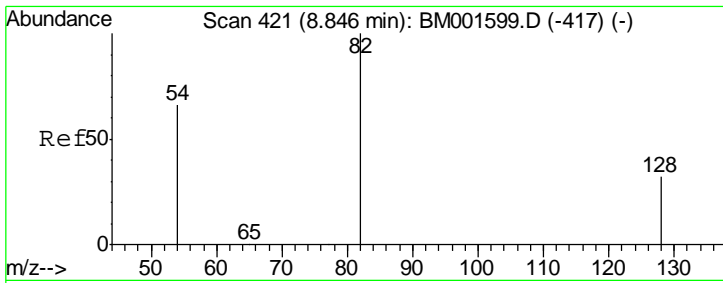
Tgt Ion	Resp	Lower	Upper
99	56758		
42	26.1	21.6	32.4
71	35.3	28.7	43.1



#6  
 Naphthalene-d8  
 Concen: 5.00 ng  
 RT: 10.47 min Scan# 552  
 Delta R.T. -0.00 min  
 Lab File: BM001621.D  
 Acq: 09 Jun 2015 18:58

Tgt Ion	Resp	Lower	Upper
136	74374		
137	10.7	8.3	12.5
54	9.9	9.2	13.8
68	6.2	5.5	8.3

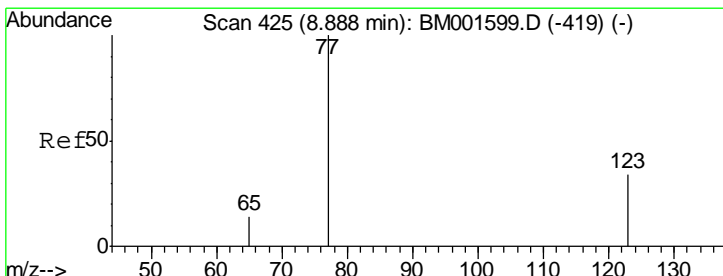
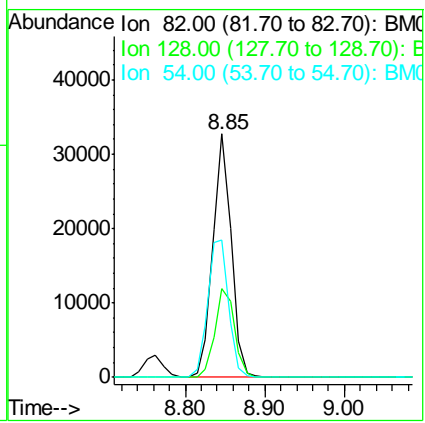
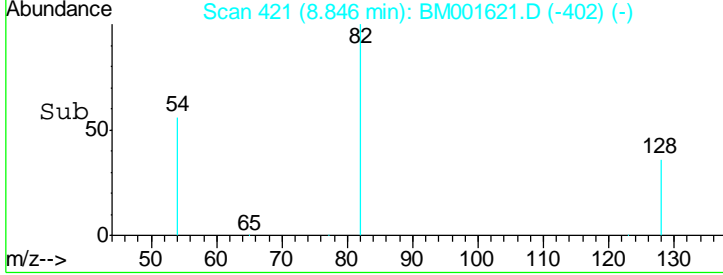
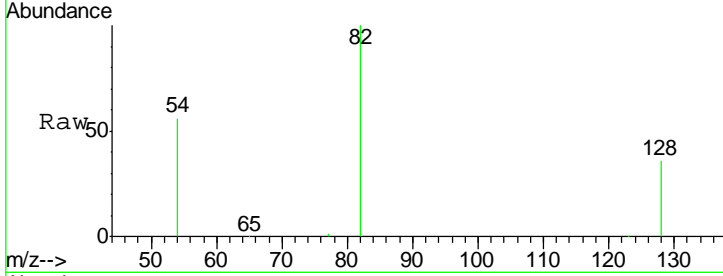




#7  
 Nitrobenzene-d5  
 Concen: 9.97 ng  
 RT: 8.85 min Scan# 421  
 Delta R.T. -0.00 min  
 Lab File: BM001621.D  
 Acq: 09 Jun 2015 18:58

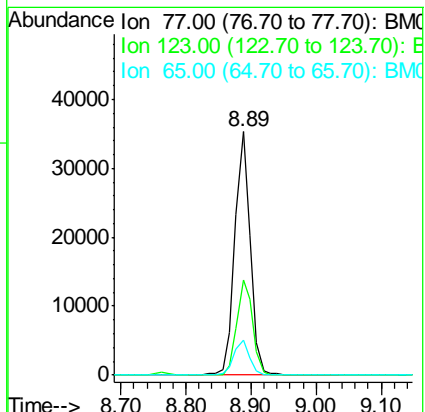
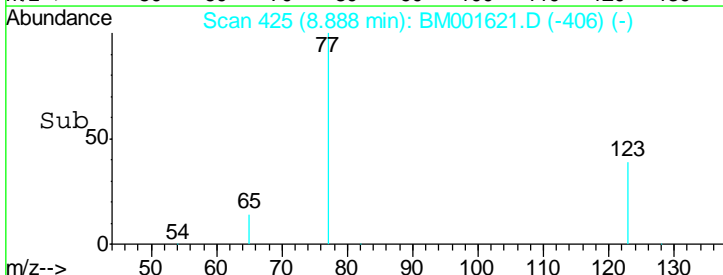
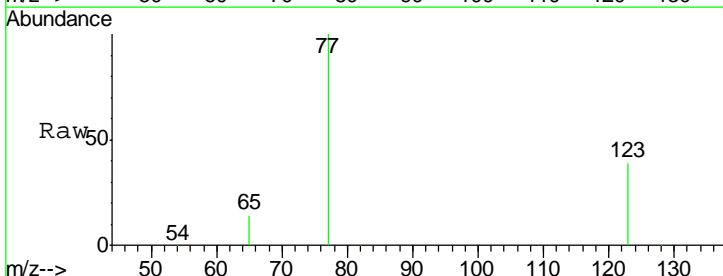
**Instrument :**  
 BNA\_M  
**ClientSampled :**  
 PB83893BS

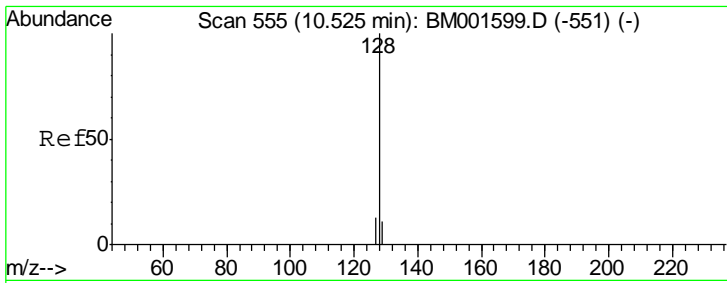
Tgt Ion	Resp	Lower	Upper
82	52254		
128	36.2	26.6	40.0
54	56.4	53.0	79.6



#8  
 Nitrobenzene  
 Concen: 10.12 ng  
 RT: 8.89 min Scan# 425  
 Delta R.T. 0.00 min  
 Lab File: BM001621.D  
 Acq: 09 Jun 2015 18:58

Tgt Ion	Resp	Lower	Upper
77	56914		
123	40.4	31.0	46.6
65	14.5	11.4	17.0



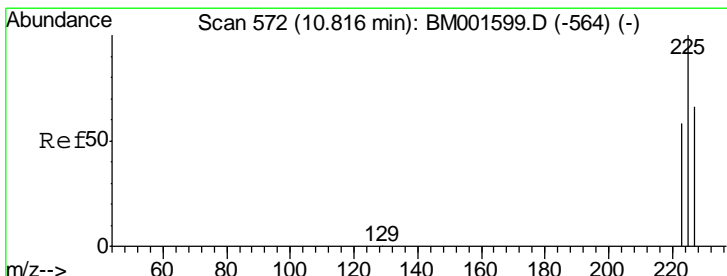
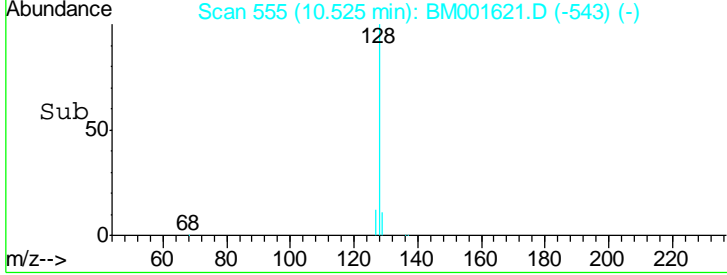
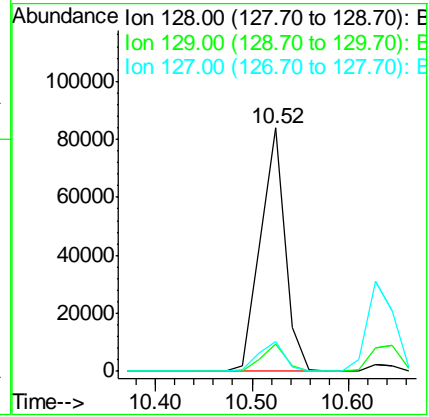
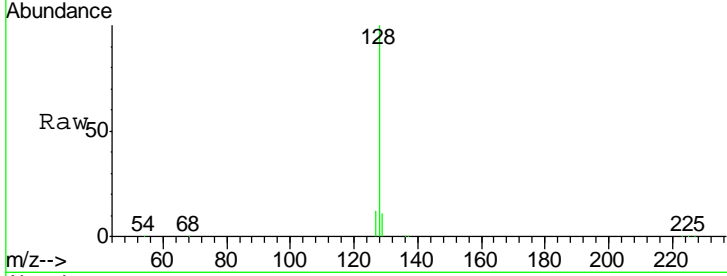


#9  
 Naphthalene  
 Concen: 8.86 ng  
 RT: 10.52 min Scan# 555  
 Delta R.T. -0.00 min  
 Lab File: BM001621.D  
 Acq: 09 Jun 2015 18:58

Instrument :  
 BNA\_M  
 ClientSampled :  
 PB83893BS

Tgt Ion: 128 Resp: 147592

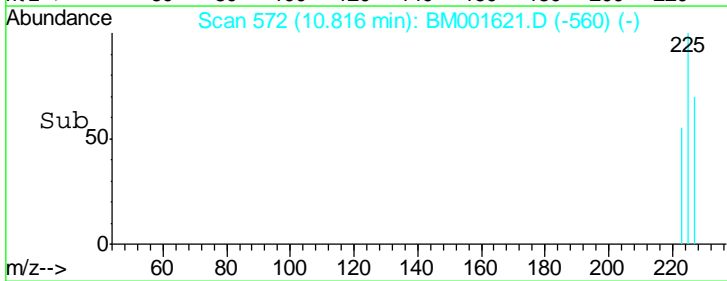
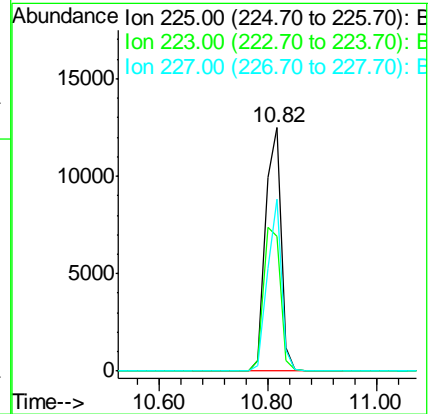
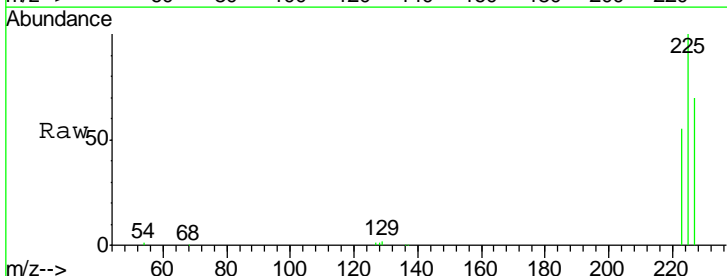
Ion	Ratio	Lower	Upper
128	100		
129	11.2	9.1	13.7
127	12.0	10.4	15.6

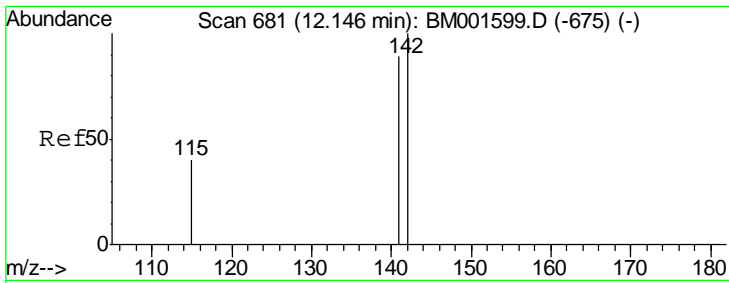


#10  
 Hexachlorobutadiene  
 Concen: 8.64 ng  
 RT: 10.82 min Scan# 572  
 Delta R.T. -0.00 min  
 Lab File: BM001621.D  
 Acq: 09 Jun 2015 18:58

Tgt Ion: 225 Resp: 24764

Ion	Ratio	Lower	Upper
225	100		
223	63.2	49.8	74.8
227	63.4	50.9	76.3

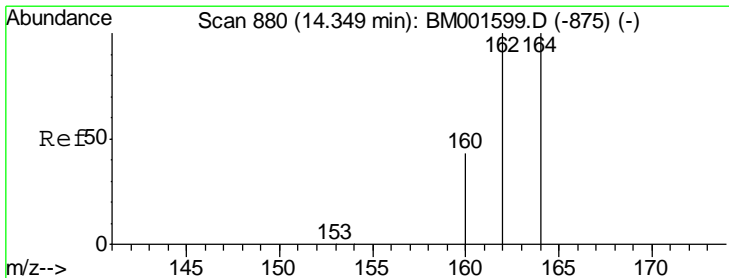
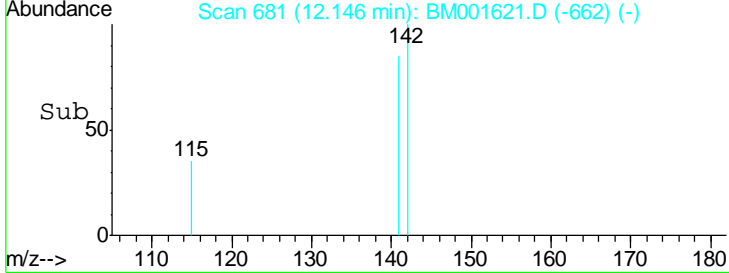
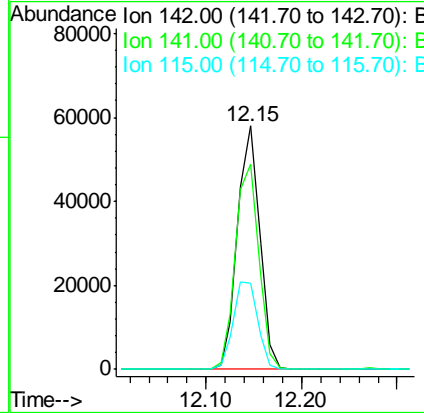
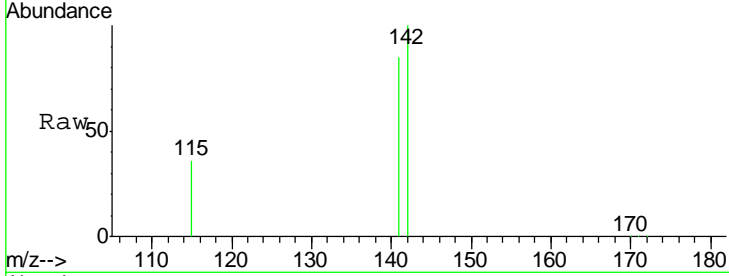




#11  
 2-Methylnaphthalene  
 Concen: 9.20 ng  
 RT: 12.15 min Scan# 681  
 Delta R.T. -0.00 min  
 Lab File: BM001621.D  
 Acq: 09 Jun 2015 18:58

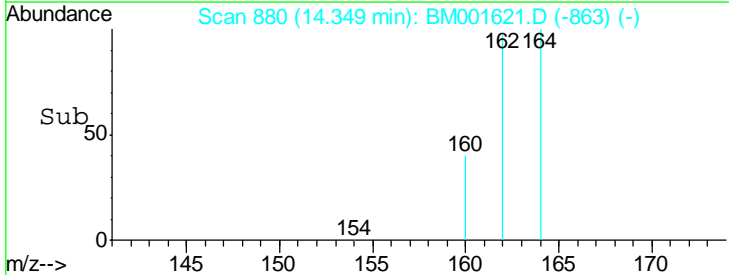
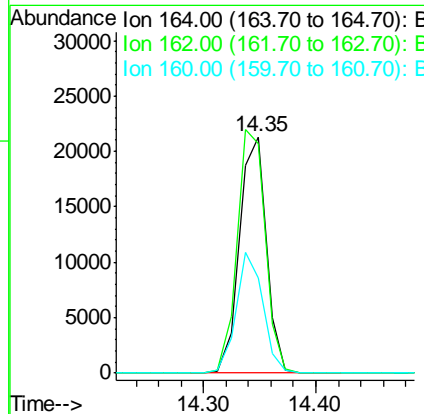
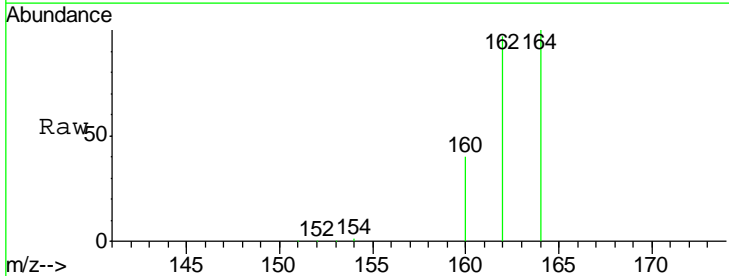
Instrument :  
 BNA\_M  
 ClientSampled :  
 PB83893BS

Tgt Ion	Resp	Ion Ratio	Lower	Upper
142	93827	100		
141	84.5	71.3	106.9	
115	35.5	32.1	48.1	

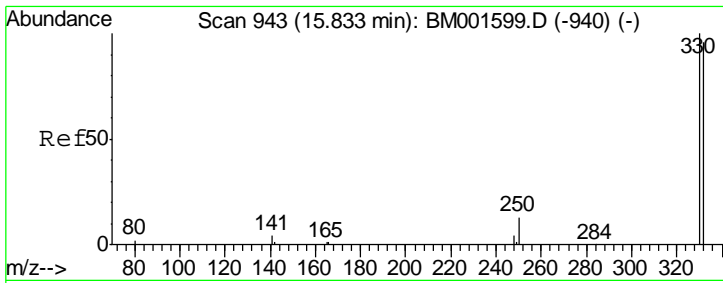


#12  
 Acenaphthene-d10  
 Concen: 5.00 ng  
 RT: 14.35 min Scan# 880  
 Delta R.T. -0.00 min  
 Lab File: BM001621.D  
 Acq: 09 Jun 2015 18:58

Tgt Ion	Resp	Ion Ratio	Lower	Upper
164	35488	100		
162	97.0	79.8	119.6	
160	40.5	34.6	51.8	





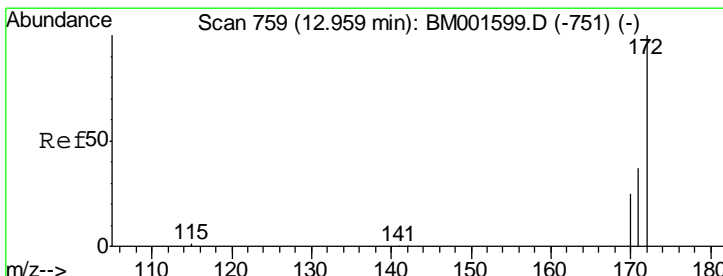
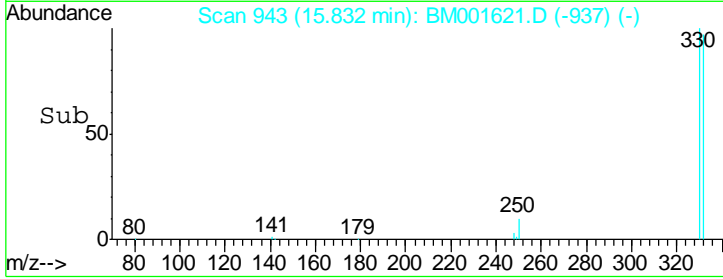
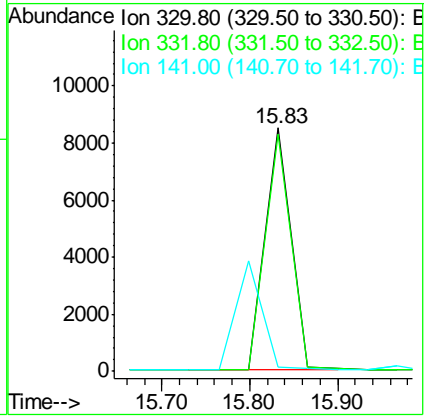
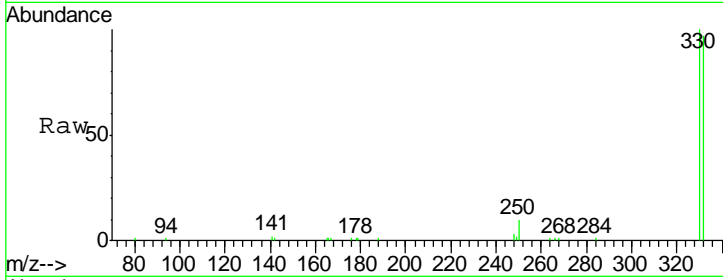


#13  
 2,4,6-Tribromophenol  
 Concen: 10.31 ng  
 RT: 15.83 min Scan# 943  
 Delta R.T. -0.00 min  
 Lab File: BM001621.D  
 Acq: 09 Jun 2015 18:58

Instrument :  
 BNA\_M  
 ClientSampleId :  
 PB83893BS

Tgt Ion: 330 Resp: 17612

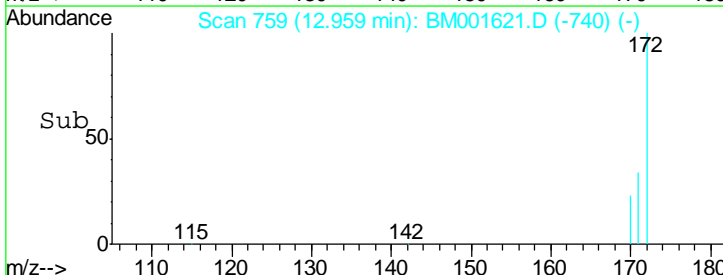
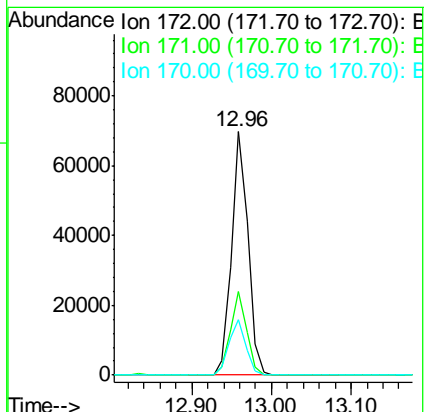
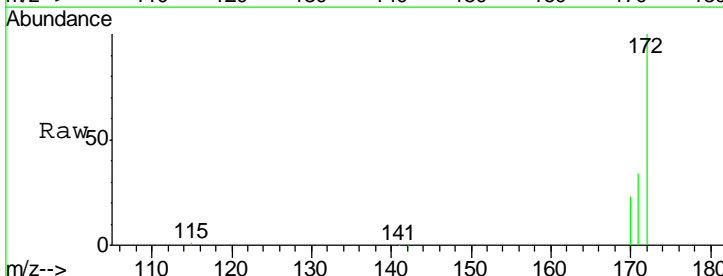
Ion	Ratio	Lower	Upper
330	100		
332	97.3	76.7	115.1
141	0.0	0.0	0.0

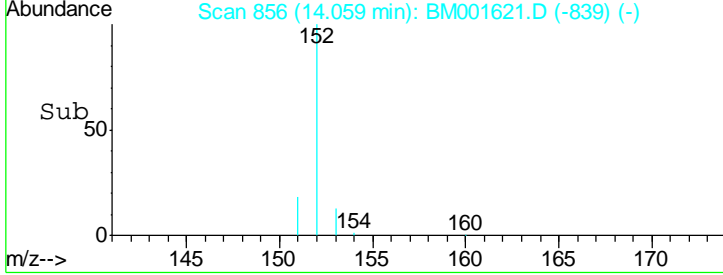
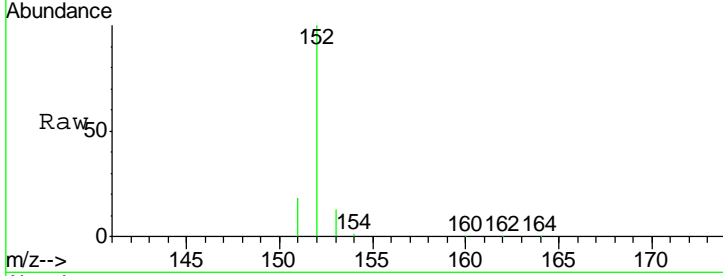
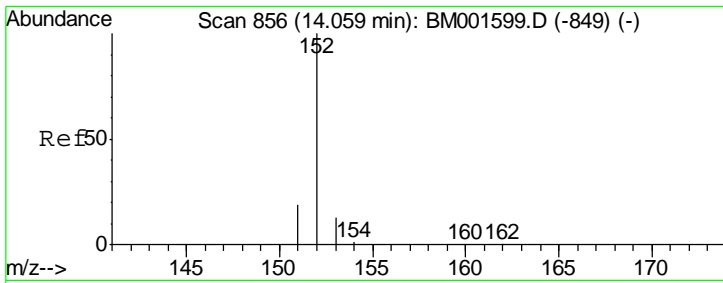


#14  
 2-Fluorobiphenyl  
 Concen: 8.60 ng  
 RT: 12.96 min Scan# 759  
 Delta R.T. -0.00 min  
 Lab File: BM001621.D  
 Acq: 09 Jun 2015 18:58

Tgt Ion: 172 Resp: 99292

Ion	Ratio	Lower	Upper
172	100		
171	34.4	29.6	44.4
170	22.7	20.6	31.0



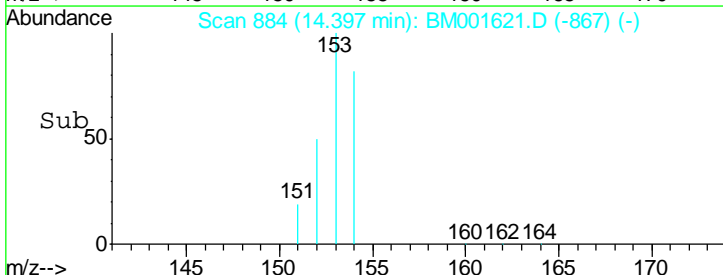
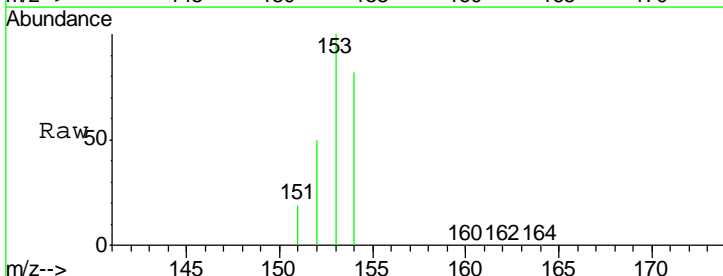
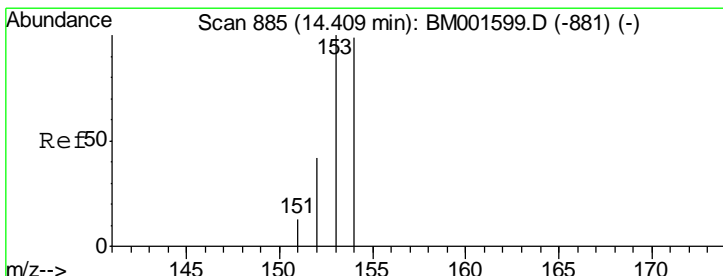
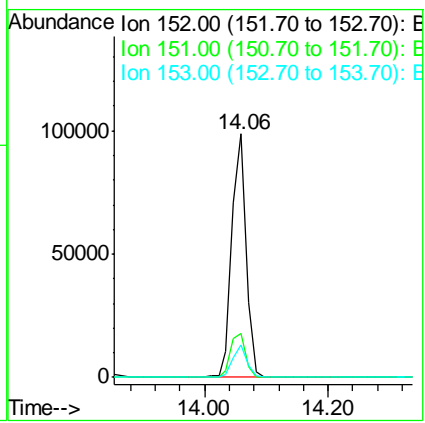


#15  
 Acenaphthylene  
 Concen: 9.76 ng  
 RT: 14.06 min Scan# 856  
 Delta R.T. -0.00 min  
 Lab File: BM001621.D  
 Acq: 09 Jun 2015 18:58

Instrument :  
 BNA\_M  
 ClientSampled :  
 PB83893BS

Tgt Ion:152 Resp: 155558

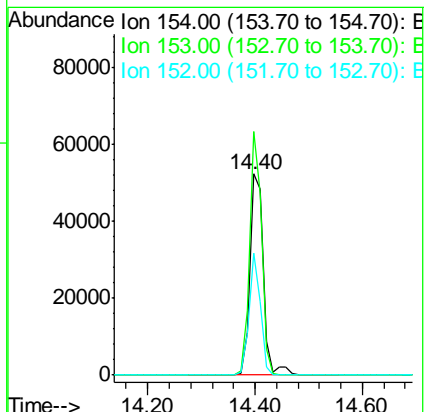
Ion	Ratio	Lower	Upper
152	100		
151	19.1	15.5	23.3
153	12.9	10.3	15.5

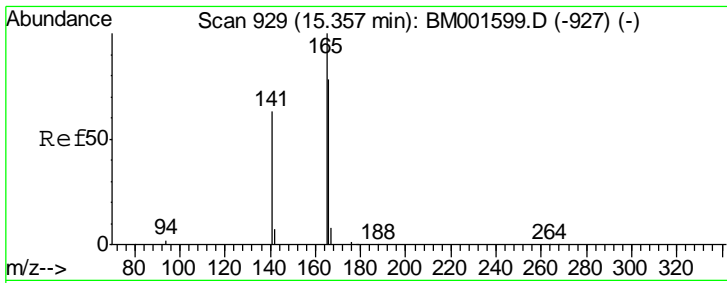


#16  
 Acenaphthene  
 Concen: 9.13 ng  
 RT: 14.40 min Scan# 884  
 Delta R.T. -0.00 min  
 Lab File: BM001621.D  
 Acq: 09 Jun 2015 18:58

Tgt Ion:154 Resp: 91464

Ion	Ratio	Lower	Upper
154	100		
153	107.0	89.4	134.0
152	51.1	43.6	65.4

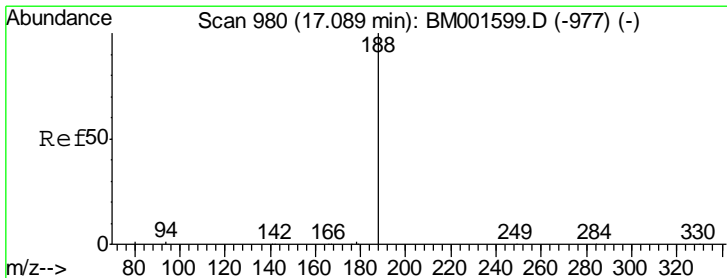
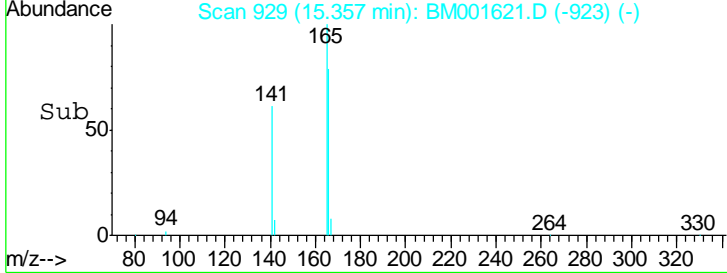
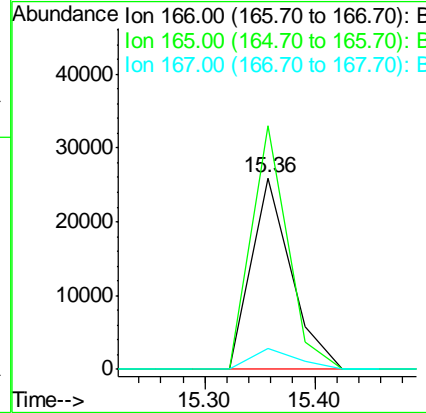
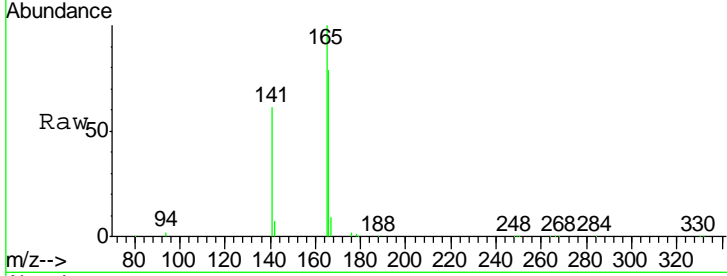




#17  
 Fluorene  
 Concen: 9.51 ng  
 RT: 15.36 min Scan# 929  
 Delta R.T. -0.00 min  
 Lab File: BM001621.D  
 Acq: 09 Jun 2015 18:58

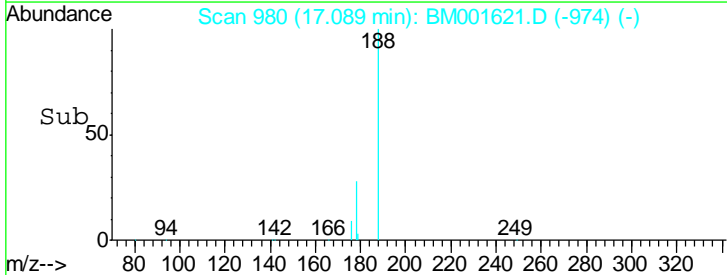
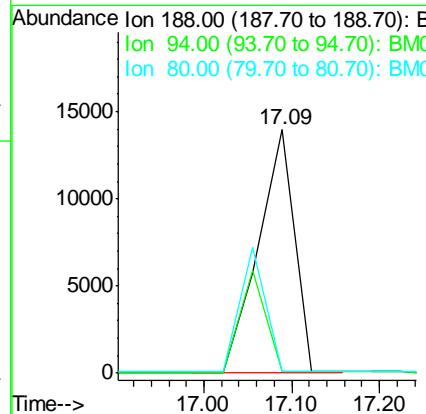
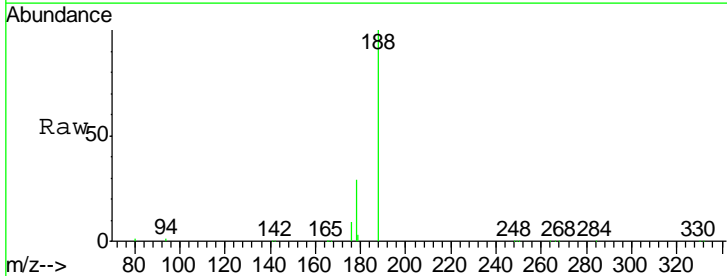
Instrument :  
 BNA\_M  
 ClientSampled :  
 PB83893BS

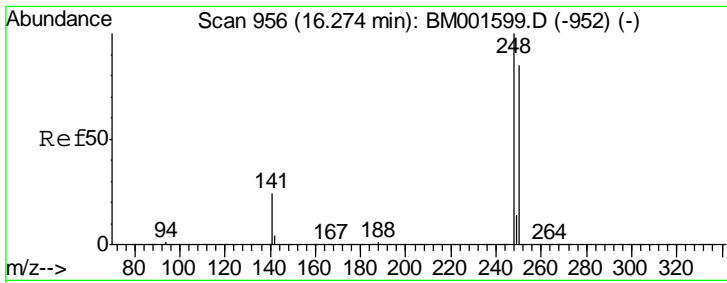
Tgt Ion	Resp	Lower	Upper
166	100		
165	116.0	87.8	131.8
167	12.1	10.0	15.0



#18  
 Phenanthrene-d10  
 Concen: 5.00 ng  
 RT: 17.09 min Scan# 980  
 Delta R.T. -0.00 min  
 Lab File: BM001621.D  
 Acq: 09 Jun 2015 18:58

Tgt Ion	Resp	Lower	Upper
188	100		
94	0.8	1.0	1.6#
80	0.9	1.0	1.4#

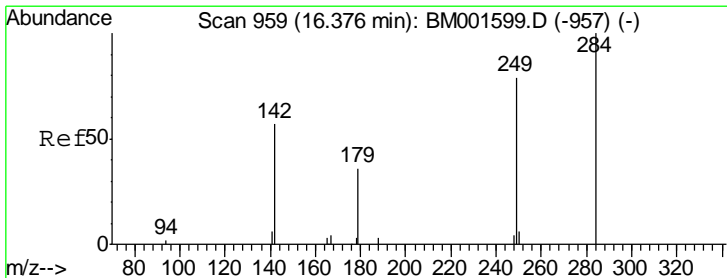
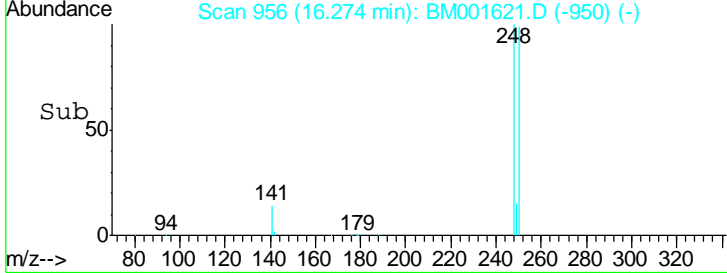
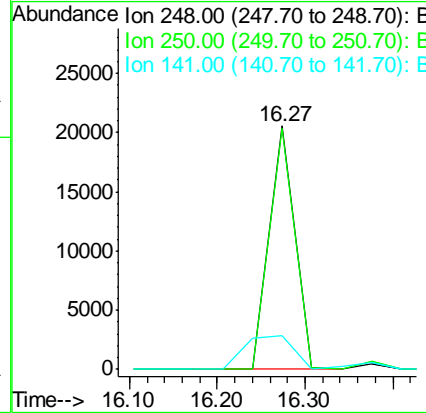
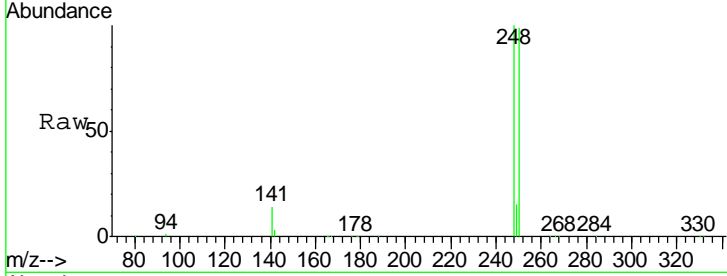




#19  
 4-Bromophenyl-phenylether  
 Concen: 10.98 ng  
 RT: 16.27 min Scan# 956  
 Delta R.T. -0.00 min  
 Lab File: BM001621.D  
 Acq: 09 Jun 2015 18:58

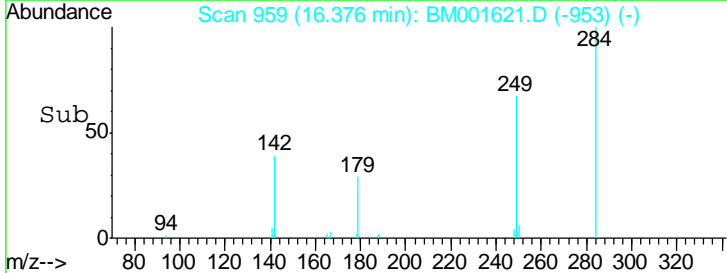
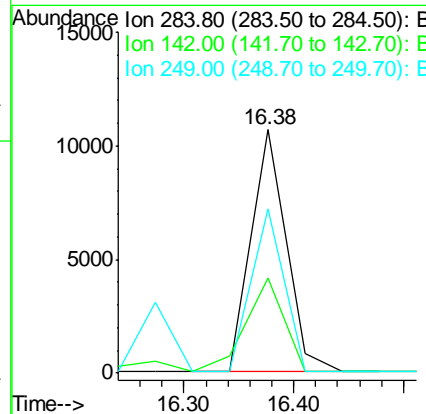
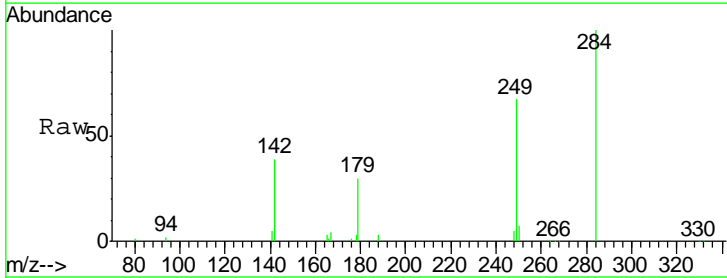
Instrument :  
 BNA\_M  
 ClientSampled :  
 PB83893BS

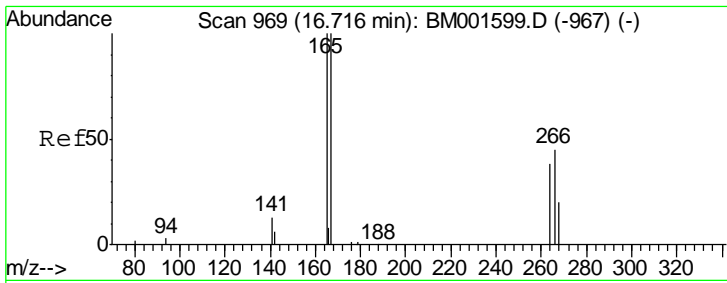
Tgt Ion	Resp	Lower	Upper
248	41999		
250	98.8	68.6	103.0
141	26.0	25.5	38.3



#20  
 Hexachlorobenzene  
 Concen: 11.22 ng  
 RT: 16.38 min Scan# 959  
 Delta R.T. -0.00 min  
 Lab File: BM001621.D  
 Acq: 09 Jun 2015 18:58

Tgt Ion	Resp	Lower	Upper
284	23453		
284	100		
142	46.2	47.3	70.9#
249	62.4	75.8	113.6#

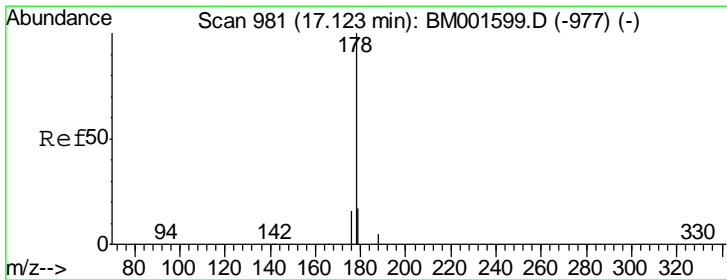
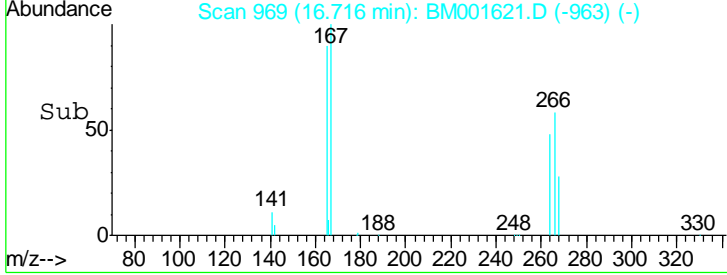
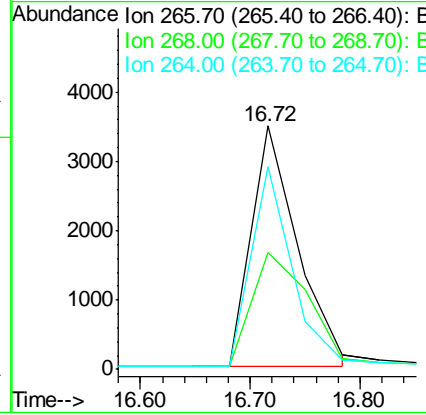
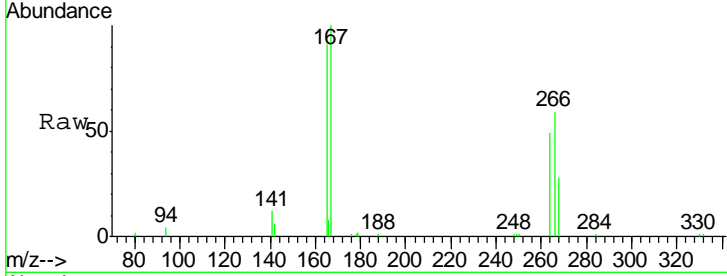




#21  
 Pentachlorophenol  
 Concen: 14.39 ng  
 RT: 16.72 min Scan# 969  
 Delta R.T. -0.00 min  
 Lab File: BM001621.D  
 Acq: 09 Jun 2015 18:58

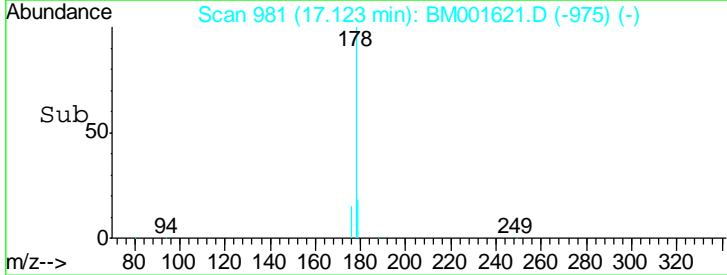
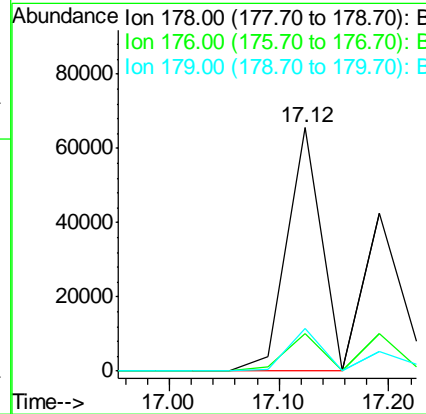
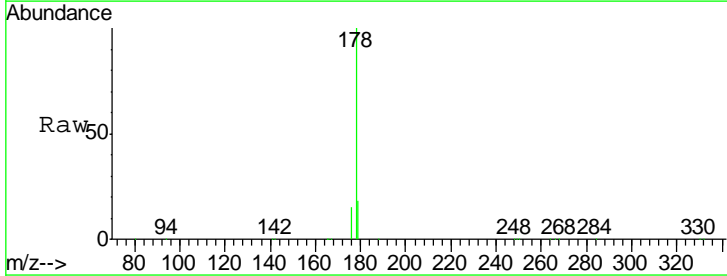
**Instrument :**  
 BNA\_M  
**ClientSampled :**  
 PB83893BS

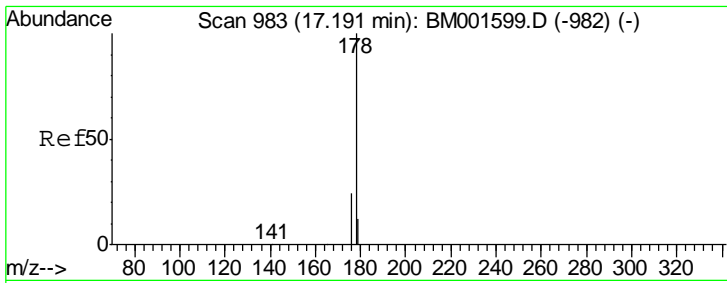
Tgt Ion	Resp	Lower	Upper
266	10068		
266	100		
268	47.9	45.8	68.8
264	83.0	70.6	106.0



#22  
 Phenanthrene  
 Concen: 9.87 ng  
 RT: 17.12 min Scan# 981  
 Delta R.T. -0.00 min  
 Lab File: BM001621.D  
 Acq: 09 Jun 2015 18:58

Tgt Ion	Resp	Lower	Upper
178	142037		
178	100		
176	16.2	13.2	19.8
179	17.1	13.8	20.8

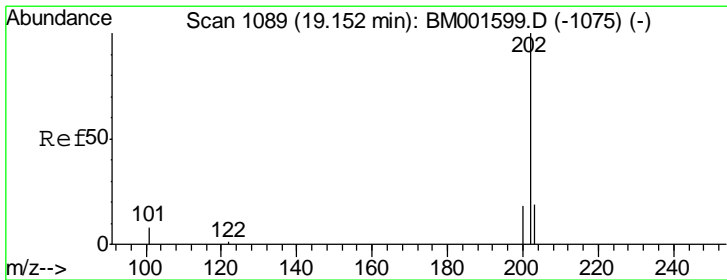
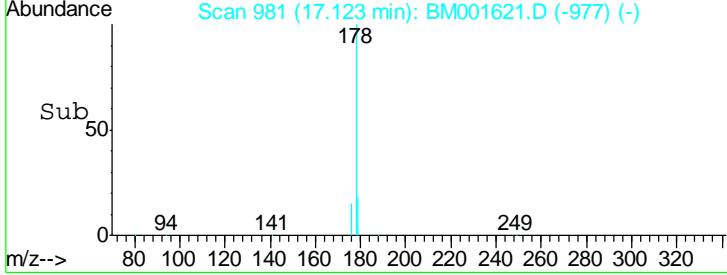
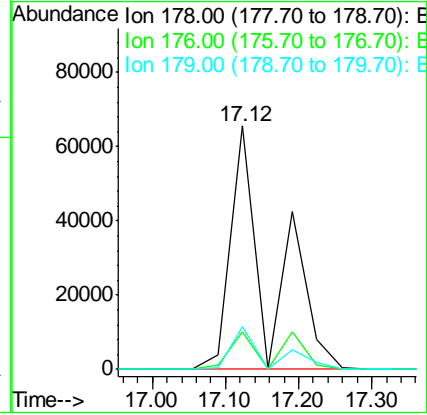
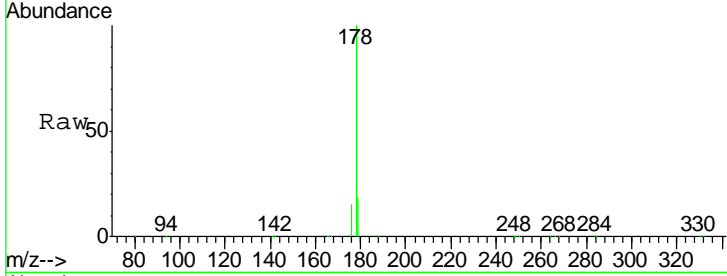




#23  
 Anthracene  
 Concen: 28.71 ng  
 RT: 17.12 min Scan# 981  
 Delta R.T. -0.07 min  
 Lab File: BM001621.D  
 Acq: 09 Jun 2015 18:58

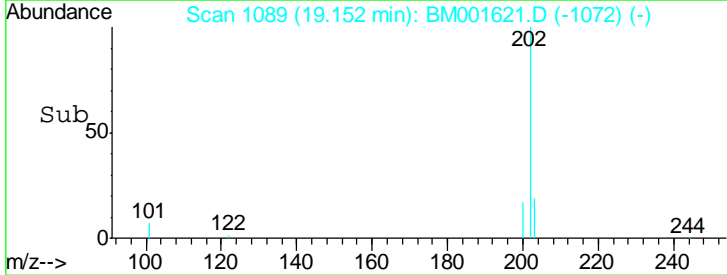
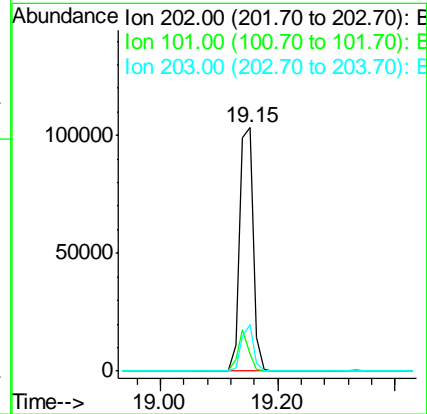
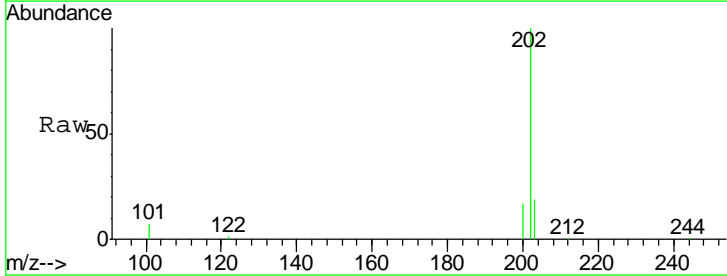
Instrument :  
 BNA\_M  
 ClientSampled :  
 PB83893BS

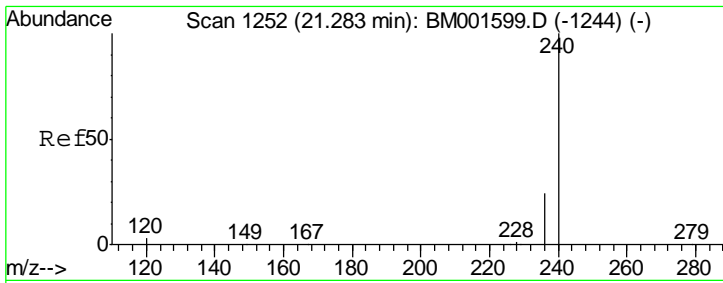
Tgt Ion	Resp	Lower	Upper
178	100		
176	18.5	21.9	32.9#
179	15.6	23.0	34.4#



#24  
 Fluoranthene  
 Concen: 10.70 ng  
 RT: 19.15 min Scan# 1089  
 Delta R.T. -0.00 min  
 Lab File: BM001621.D  
 Acq: 09 Jun 2015 18:58

Tgt Ion	Resp	Lower	Upper
202	100		
101	13.2	10.4	15.6
203	17.2	13.8	20.6

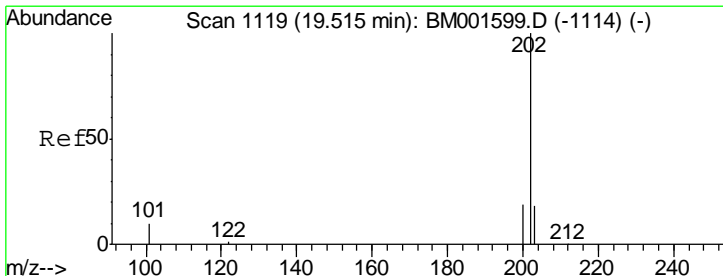
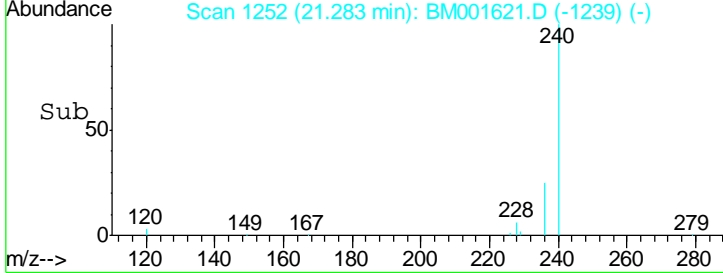
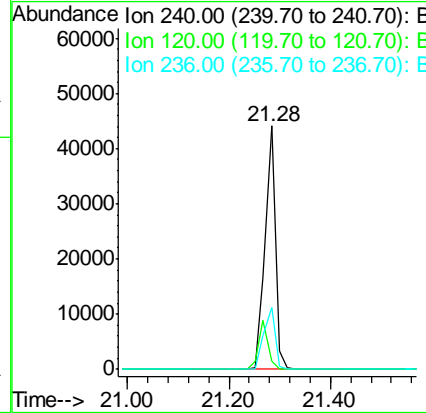
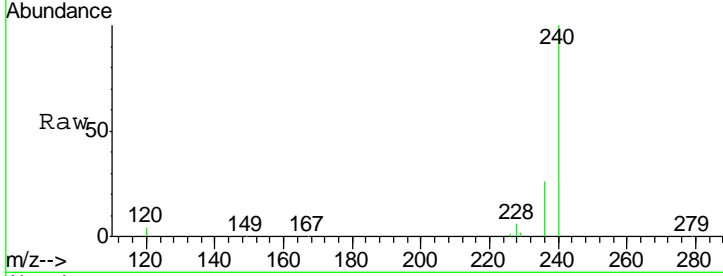




#25  
 Chrysene-d12  
 Concen: 5.00 ng  
 RT: 21.28 min Scan# 1252  
 Delta R.T. -0.00 min  
 Lab File: BM001621.D  
 Acq: 09 Jun 2015 18:58

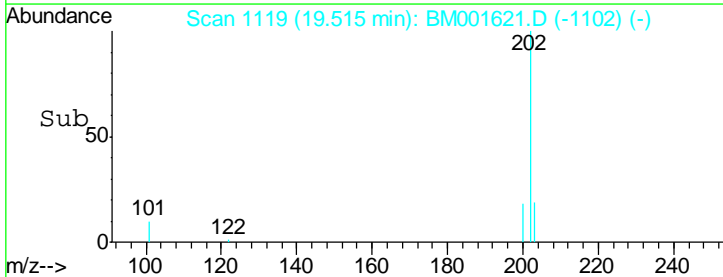
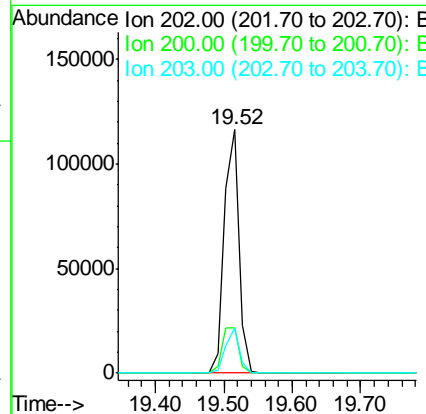
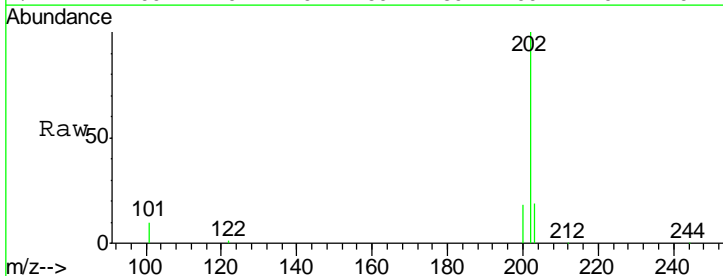
Instrument :  
 BNA\_M  
 ClientSampleId :  
 PB83893BS

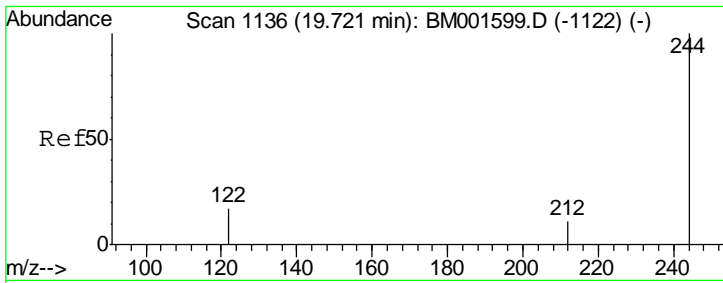
Tgt Ion	Resp	Lower	Upper
240	100		
120	3.6	2.2	3.4#
236	25.6	19.6	29.4



#26  
 Pyrene  
 Concen: 8.95 ng  
 RT: 19.52 min Scan# 1119  
 Delta R.T. 0.00 min  
 Lab File: BM001621.D  
 Acq: 09 Jun 2015 18:58

Tgt Ion	Resp	Lower	Upper
202	100		
200	20.7	16.7	25.1
203	17.5	14.0	21.0

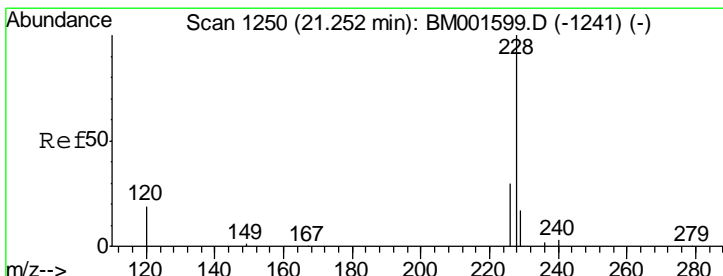
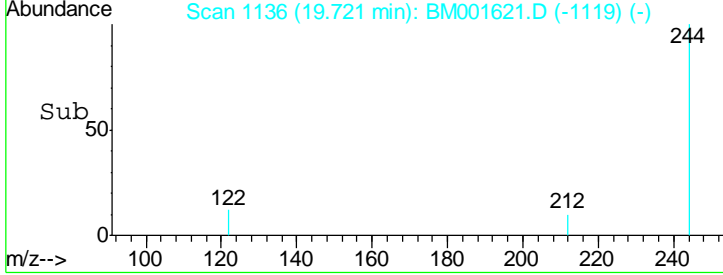
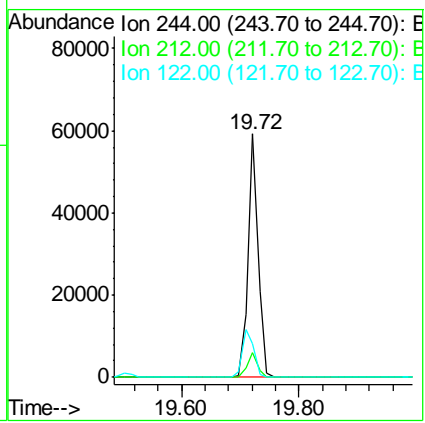
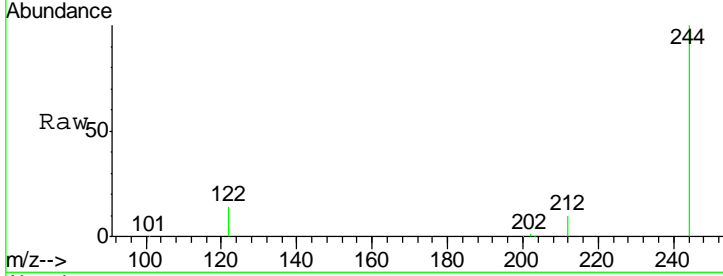




#27  
 Terphenyl-d14  
 Concen: 9.05 ng  
 RT: 19.72 min Scan# 1136  
 Delta R.T. -0.00 min  
 Lab File: BM001621.D  
 Acq: 09 Jun 2015 18:58

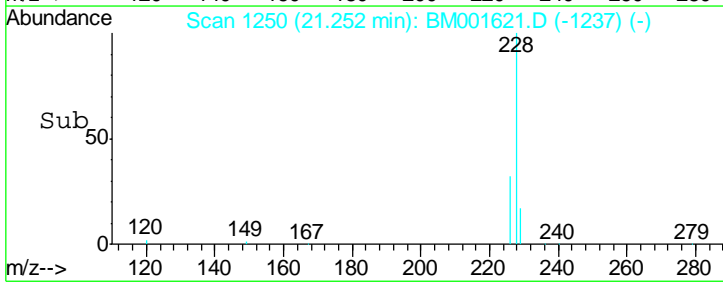
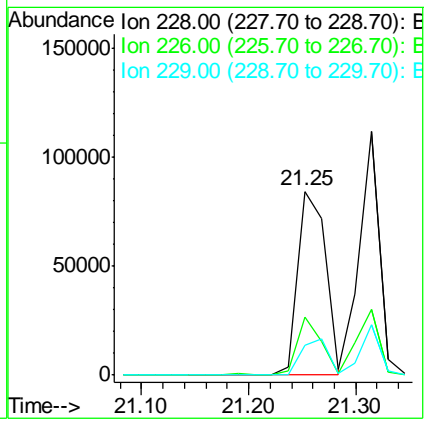
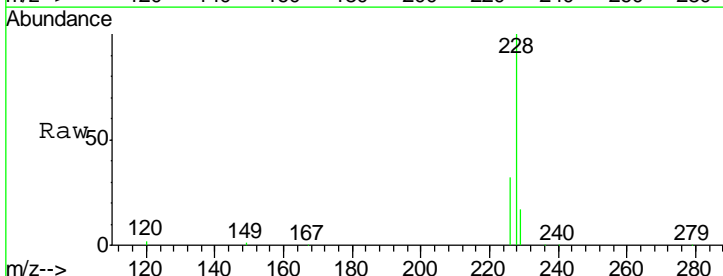
Instrument : BNA\_M  
 ClientSampled : PB83893BS

Tgt Ion	Resp	Lower	Upper
244	70677		
212	10.0	9.2	13.8
122	13.8	14.5	21.7#

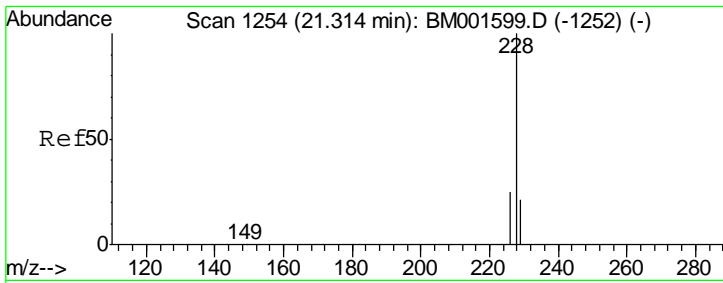


#28  
 Benzo(a)anthracene  
 Concen: 8.66 ng  
 RT: 21.25 min Scan# 1250  
 Delta R.T. -0.00 min  
 Lab File: BM001621.D  
 Acq: 09 Jun 2015 18:58

Tgt Ion	Resp	Lower	Upper
228	151331		
226	31.7	24.6	37.0
229	16.6	13.8	20.8



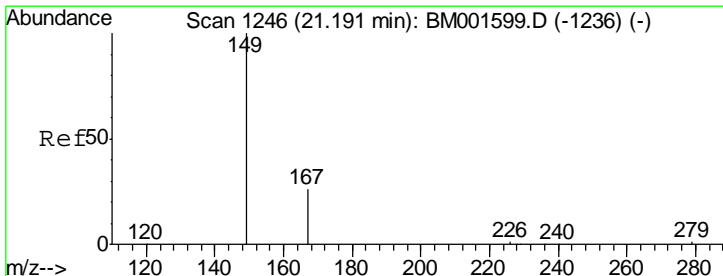
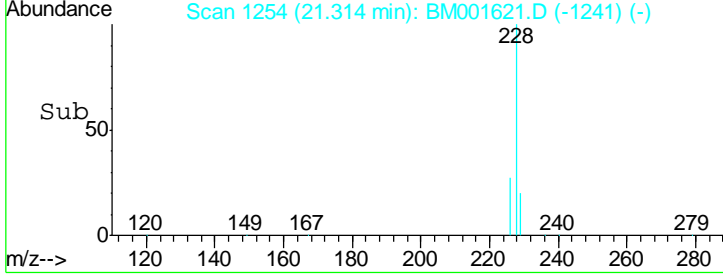
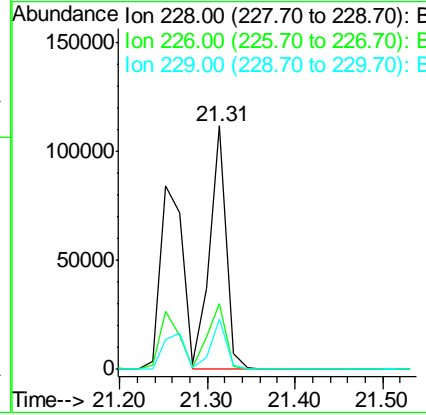
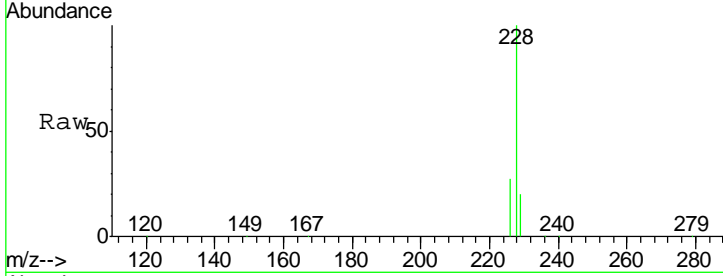




#29  
 Chrysene  
 Concen: 8.82 ng  
 RT: 21.31 min Scan# 1254  
 Delta R.T. -0.00 min  
 Lab File: BM001621.D  
 Acq: 09 Jun 2015 18:58

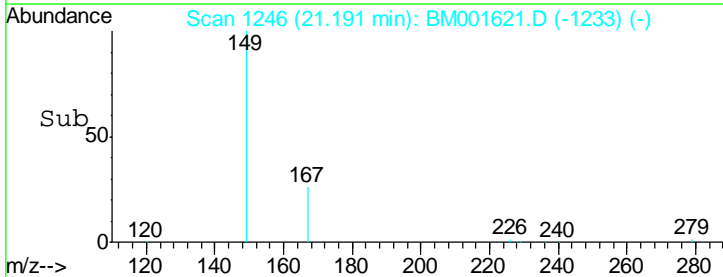
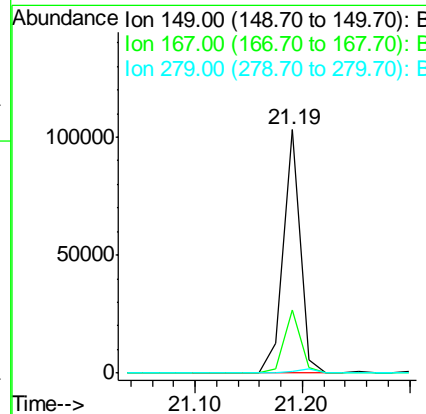
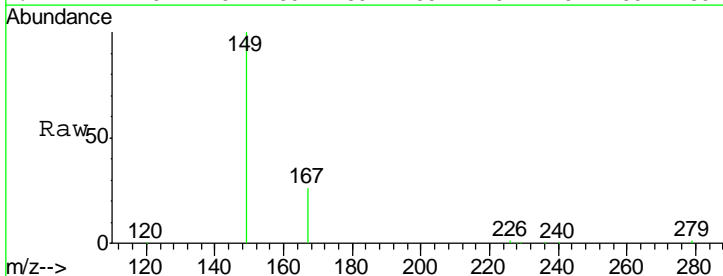
Instrument :  
 BNA\_M  
 ClientSampled :  
 PB83893BS

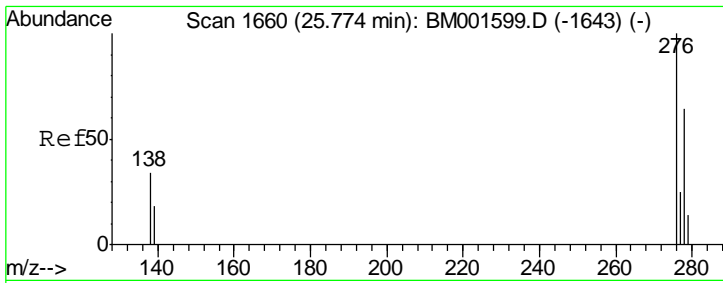
Tgt Ion	Resp	Lower	Upper
228	145749		
226	26.9	20.6	31.0
229	20.5	17.4	26.2



#30  
 Bis(2-ethylhexyl)phthalate  
 Concen: 11.14 ng  
 RT: 21.19 min Scan# 1246  
 Delta R.T. -0.00 min  
 Lab File: BM001621.D  
 Acq: 09 Jun 2015 18:58

Tgt Ion	Resp	Lower	Upper
149	112554		
167	25.6	20.2	30.4
279	1.9	1.7	2.5

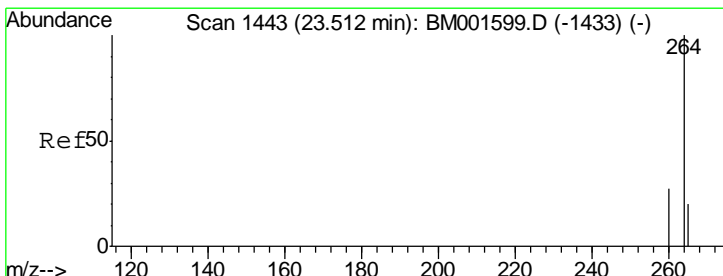
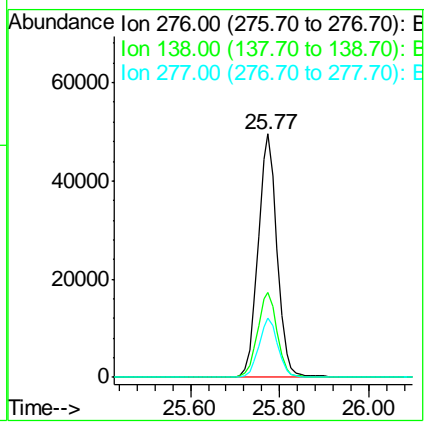
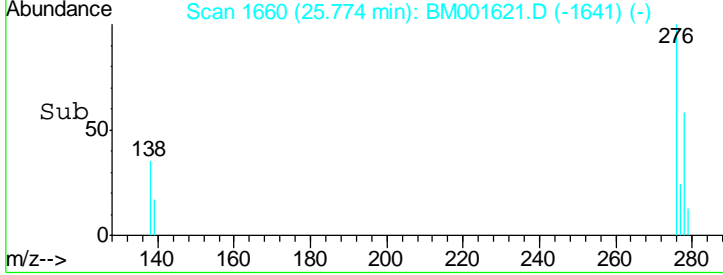
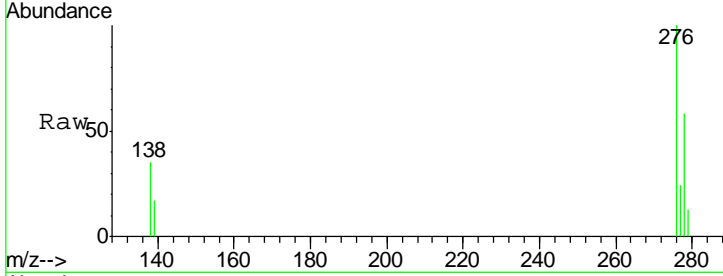




#31  
 Indeno(1,2,3-cd)pyrene  
 Concen: 8.71 ng  
 RT: 25.77 min Scan# 1660  
 Delta R.T. -0.00 min  
 Lab File: BM001621.D  
 Acq: 09 Jun 2015 18:58

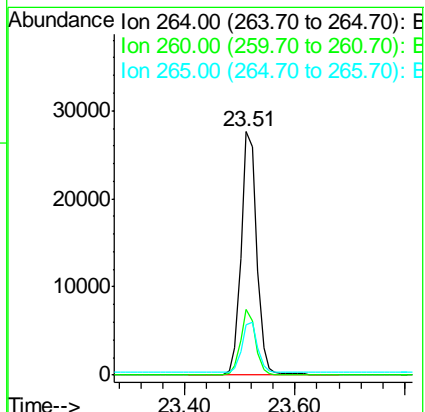
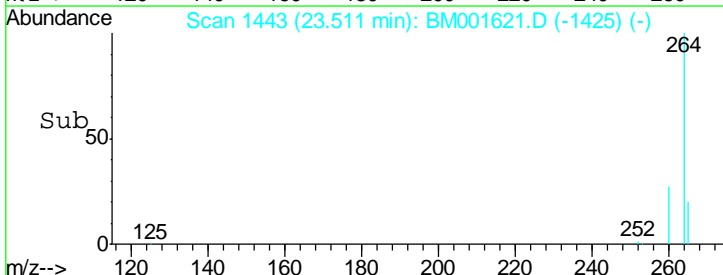
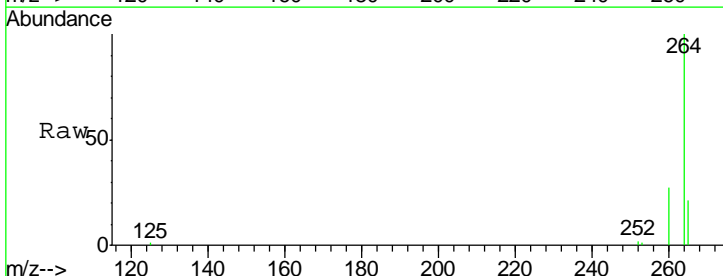
Instrument :  
 BNA\_M  
 ClientSampled :  
 PB83893BS

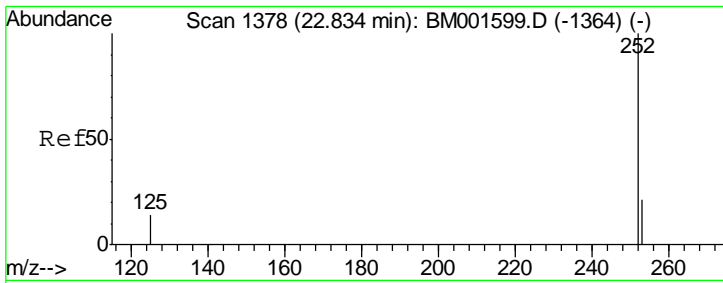
Tgt Ion	Resp	Lower	Upper
276	146256		
138	36.0	28.2	42.2
277	24.6	19.4	29.2



#32  
 Perylene-d12  
 Concen: 5.00 ng  
 RT: 23.51 min Scan# 1443  
 Delta R.T. -0.01 min  
 Lab File: BM001621.D  
 Acq: 09 Jun 2015 18:58

Tgt Ion	Resp	Lower	Upper
264	54131		
260	26.8	21.8	32.6
265	20.7	16.8	25.2



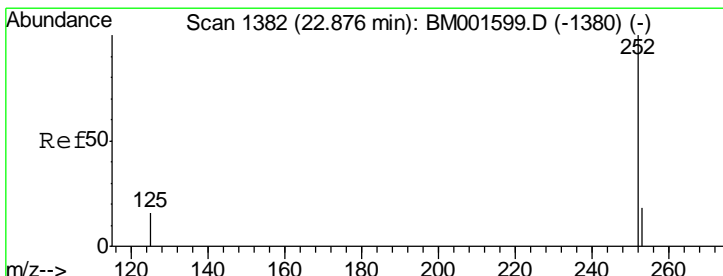
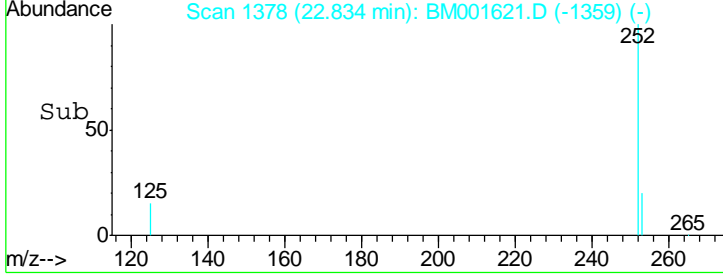
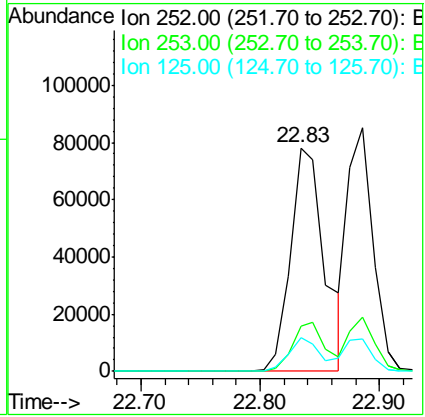
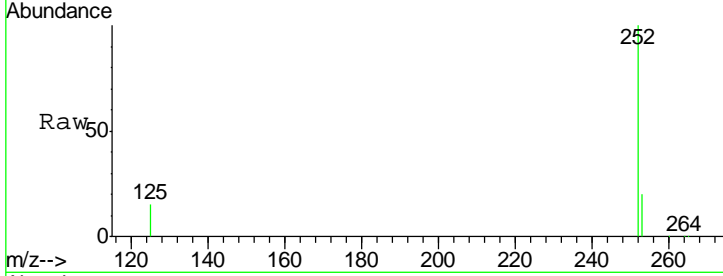


#33  
 Benzo(b)fluoranthene  
 Concen: 9.58 ng  
 RT: 22.83 min Scan# 1378  
 Delta R.T. -0.00 min  
 Lab File: BM001621.D  
 Acq: 09 Jun 2015 18:58

Instrument :  
 BNA\_M  
 ClientSampled :  
 PB83893BS

Tgt Ion: 252 Resp: 155908

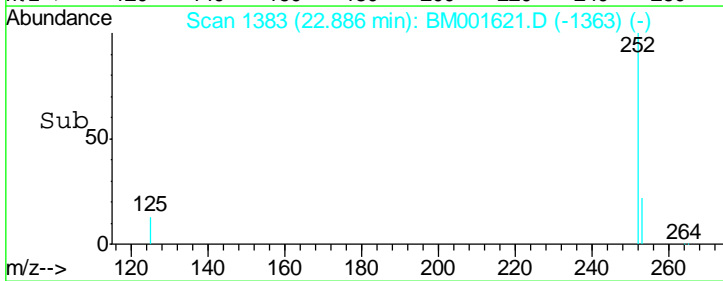
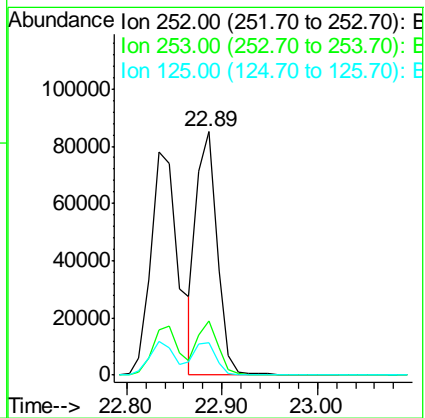
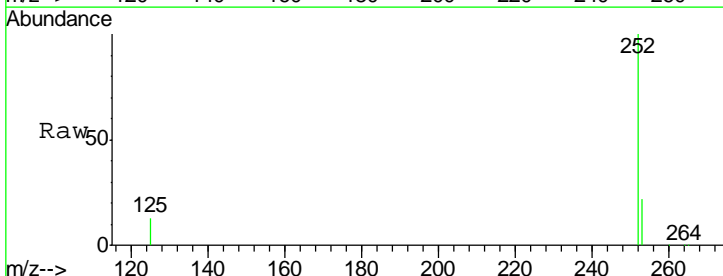
Ion	Ratio	Lower	Upper
252	100		
253	20.3	17.6	26.4
125	14.8	12.4	18.6

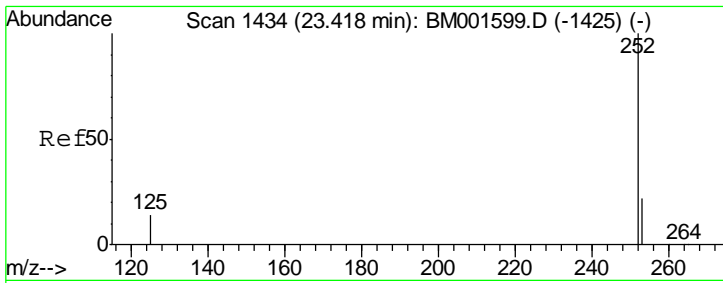


#34  
 Benzo(k)fluoranthene  
 Concen: 8.03 ng  
 RT: 22.89 min Scan# 1383  
 Delta R.T. 0.01 min  
 Lab File: BM001621.D  
 Acq: 09 Jun 2015 18:58

Tgt Ion: 252 Resp: 125997

Ion	Ratio	Lower	Upper
252	100		
253	22.2	17.1	25.7
125	13.2	12.8	19.2

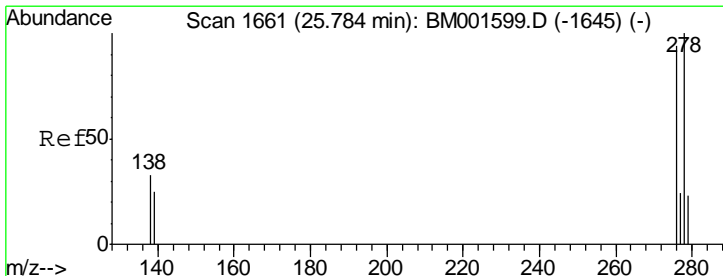
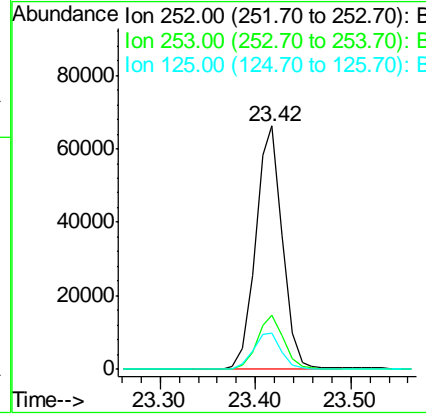
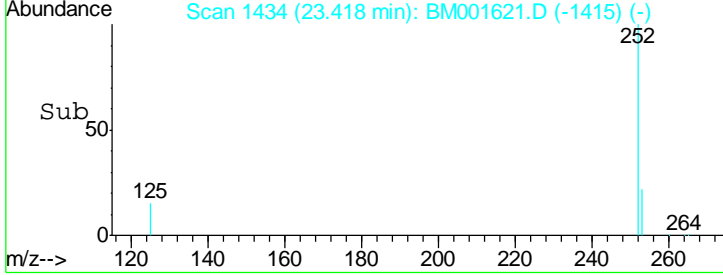
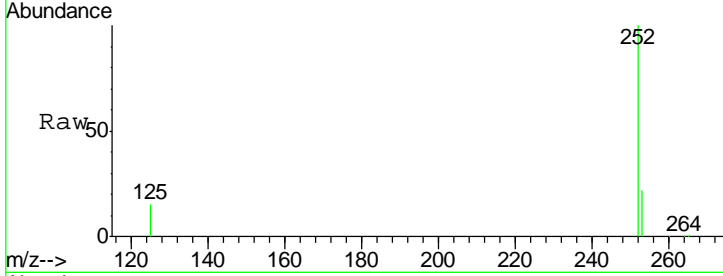




#35  
 Benzo(a)pyrene  
 Concen: 8.94 ng  
 RT: 23.42 min Scan# 1434  
 Delta R.T. 0.00 min  
 Lab File: BM001621.D  
 Acq: 09 Jun 2015 18:58

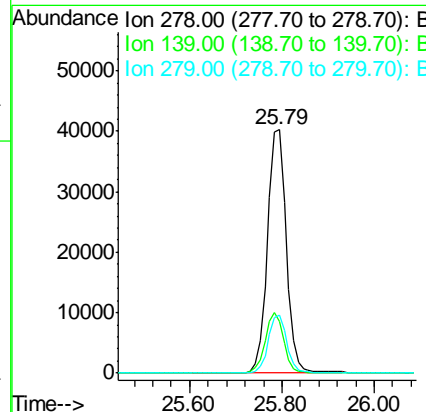
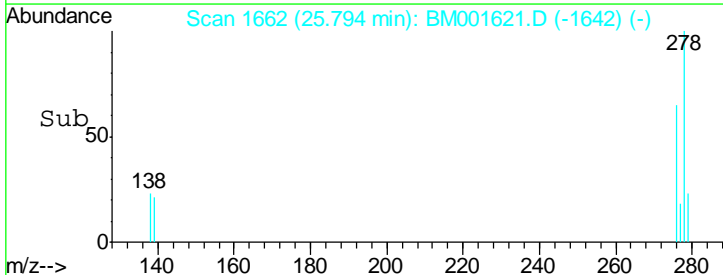
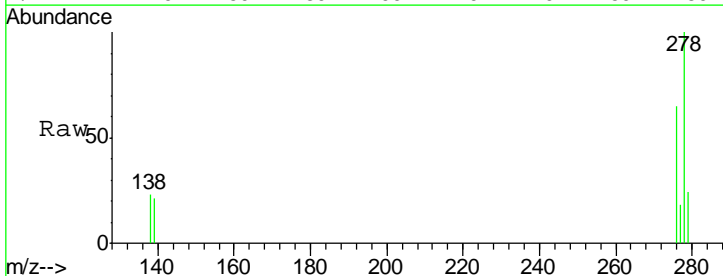
Instrument :  
 BNA\_M  
 ClientSampled :  
 PB83893BS

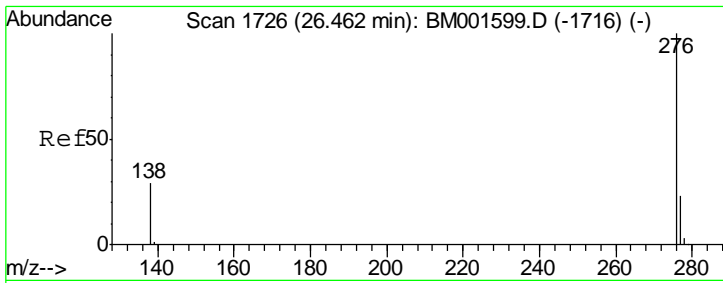
Tgt Ion	Resp	Lower	Upper
252	128498		
253	22.2	19.4	29.0
125	14.8	13.0	19.6



#36  
 Dibenzo(a,h)anthracene  
 Concen: 8.67 ng  
 RT: 25.79 min Scan# 1662  
 Delta R.T. 0.01 min  
 Lab File: BM001621.D  
 Acq: 09 Jun 2015 18:58

Tgt Ion	Resp	Lower	Upper
278	113846		
139	21.2	20.6	31.0
279	23.6	19.7	29.5





#37  
 Benzo(g,h,i)perylene  
 Concen: 8.33 ng  
 RT: 26.46 min Scan# 1726  
 Delta R.T. -0.00 min  
 Lab File: BM001621.D  
 Acq: 09 Jun 2015 18:58

Instrument :  
 BNA\_M  
 ClientSampled :  
 PB83893BS

Tgt Ion	Resp	Lower	Upper
276	117936		
277	23.5	19.4	29.0
138	30.5	24.5	36.7

