

Data Path : Z:\svoasrv\HPCHEM1\BNA\_M\Data\BM060822\  
 Data File : BM035427.D  
 Acq On : 08 Jun 2022 13:16  
 Operator : CG/JU  
 Sample : PB145400BL  
 Misc :  
 ALS Vial : 5 Sample Multiplier: 1

Instrument :  
 BNA\_M  
 ClientSampleId :  
 PB145400BL

Quant Time: Jun 09 00:49:50 2022  
 Quant Method : Z:\svoasrv\HPCHEM1\BNA\_M\Methods\8270-BM060222.M  
 Quant Title : ASP BNA STANDARDS FOR 5 POINT CALIBRATION  
 QLast Update : Tue Jun 07 14:28:07 2022  
 Response via : Initial Calibration

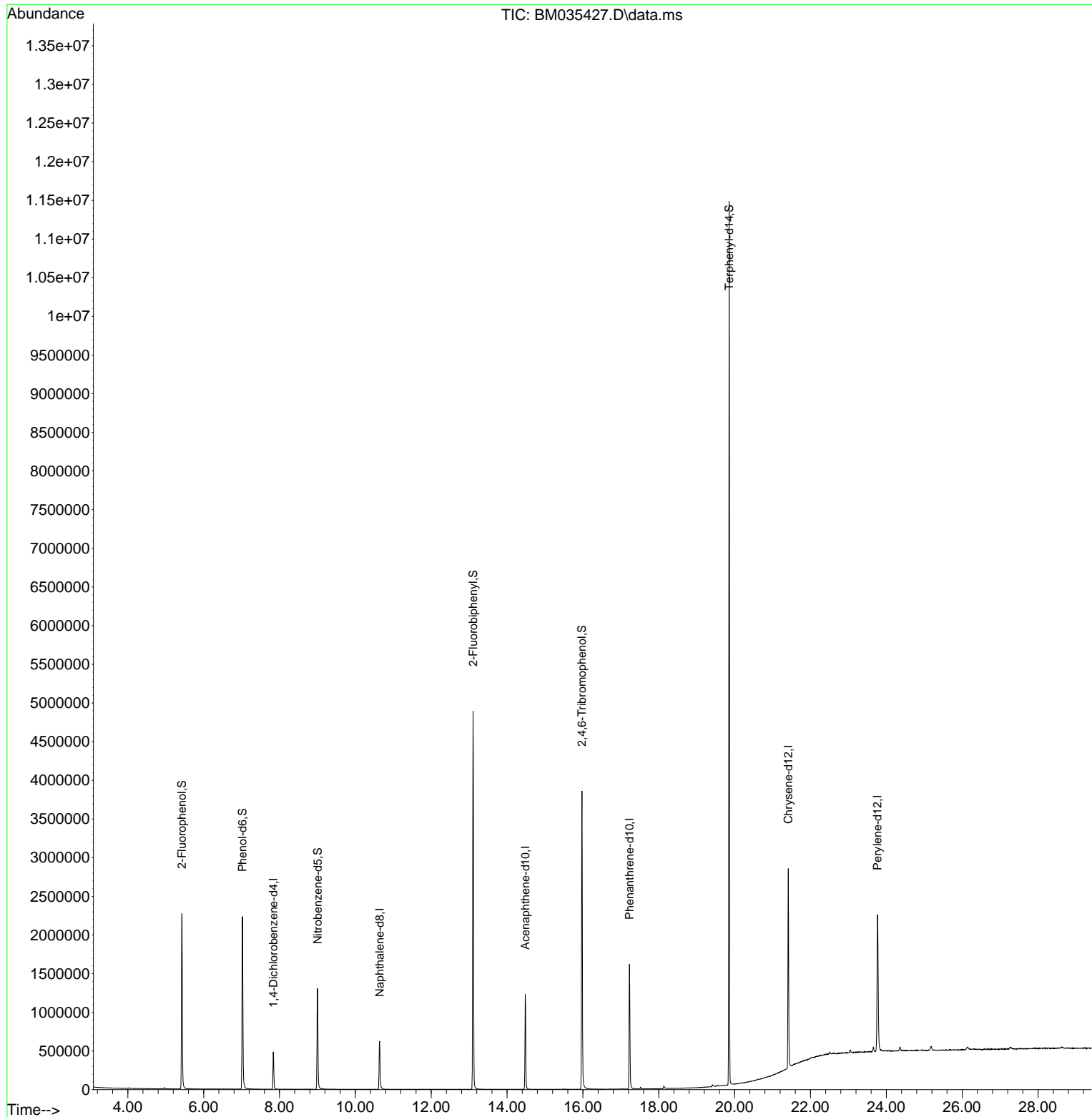
Compound	R.T.	QIon	Response	Conc	Units	Dev(Min)
Internal Standards						
1) 1,4-Dichlorobenzene-d4	7.840	152	156185	20.000	ng	0.00
21) Naphthalene-d8	10.639	136	638939	20.000	ng	# 0.00
39) Acenaphthene-d10	14.480	164	473868	20.000	ng	0.00
64) Phenanthrene-d10	17.227	188	1135316	20.000	ng	0.00
76) Chrysene-d12	21.415	240	1364325	20.000	ng	# 0.00
86) Perylene-d12	23.768	264	1478535	20.000	ng	0.00
System Monitoring Compounds						
5) 2-Fluorophenol	5.428	112	1160095	156.080	ng	0.00
7) Phenol-d6	7.022	99	1464210	144.217	ng	0.00
23) Nitrobenzene-d5	9.004	82	830521	82.535	ng	0.00
42) 2,4,6-Tribromophenol	15.974	330	955143	125.626	ng	0.00
45) 2-Fluorobiphenyl	13.104	172	2781529	84.307	ng	0.00
79) Terphenyl-d14	19.857	244	5675782	82.881	ng	0.00
Target Compounds						
9) Benzaldehyde	6.975	77	317	Below Cal	#	3

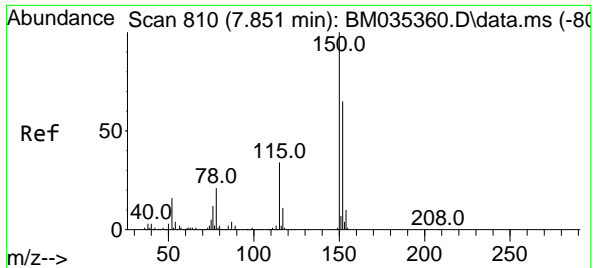
(#) = qualifier out of range (m) = manual integration (+) = signals summed

Data Path : Z:\svoasrv\HPCHEM1\BNA\_M\Data\BM060822\  
Data File : BM035427.D  
Acq On : 08 Jun 2022 13:16  
Operator : CG/JU  
Sample : PB145400BL  
Misc :  
ALS Vial : 5 Sample Multiplier: 1

Instrument :  
BNA\_M  
ClientSampleId :  
PB145400BL

Quant Time: Jun 09 00:49:50 2022  
Quant Method : Z:\svoasrv\HPCHEM1\BNA\_M\Methods\8270-BM060222.M  
Quant Title : ASP BNA STANDARDS FOR 5 POINT CALIBRATION  
QLast Update : Tue Jun 07 14:28:07 2022  
Response via : Initial Calibration

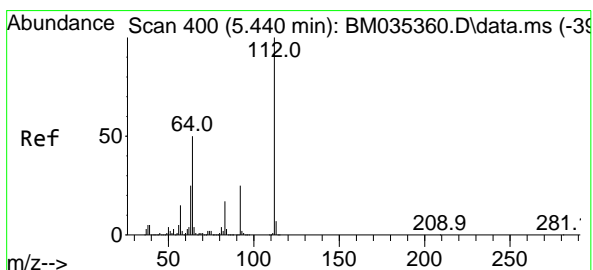
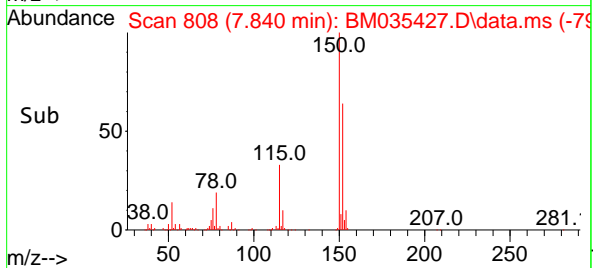
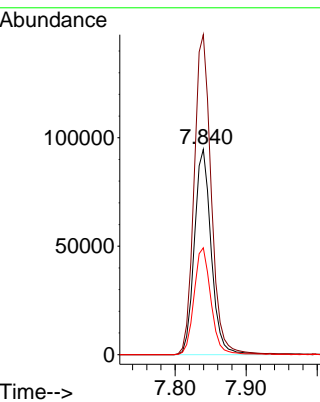
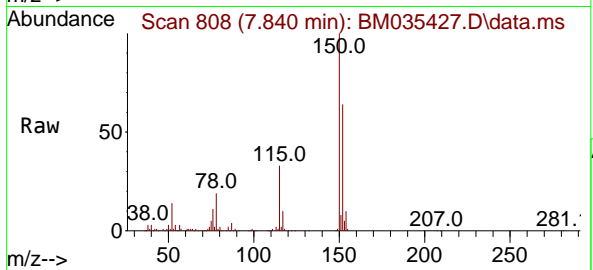




#1  
 1,4-Dichlorobenzene-d4  
 Concen: 20.000 ng  
 RT: 7.840 min Scan# 80  
 Delta R.T. -0.000 min  
 Lab File: BM035427.D  
 Acq: 08 Jun 2022 13:16

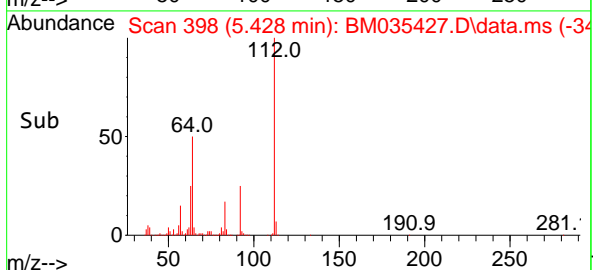
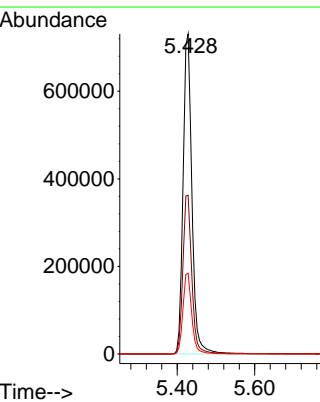
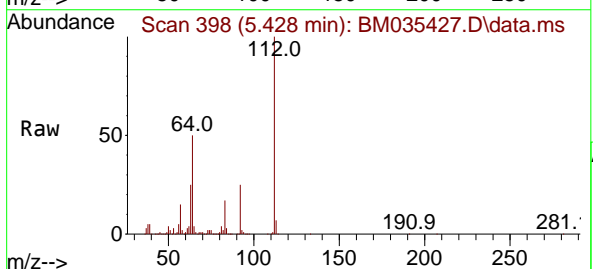
Instrument :  
 BNA\_M  
 ClientSampleId :  
 PB145400BL

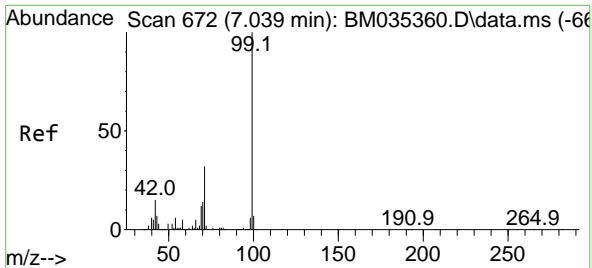
Tgt Ion:152 Resp: 156185  
 Ion Ratio Lower Upper  
 152 100  
 150 155.9 124.9 187.3  
 115 52.1 47.9 71.9



#5  
 2-Fluorophenol  
 Concen: 156.080 ng  
 RT: 5.428 min Scan# 398  
 Delta R.T. -0.000 min  
 Lab File: BM035427.D  
 Acq: 08 Jun 2022 13:16

Tgt Ion:112 Resp: 1160095  
 Ion Ratio Lower Upper  
 112 100  
 64 49.6 47.8 71.6  
 63 25.2 26.6 40.0#



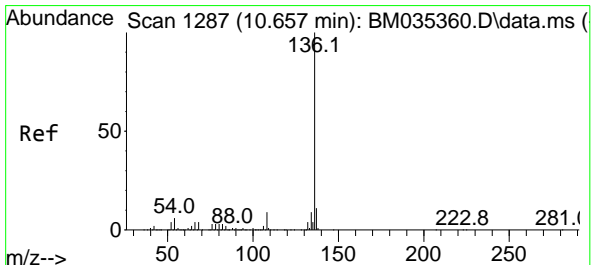
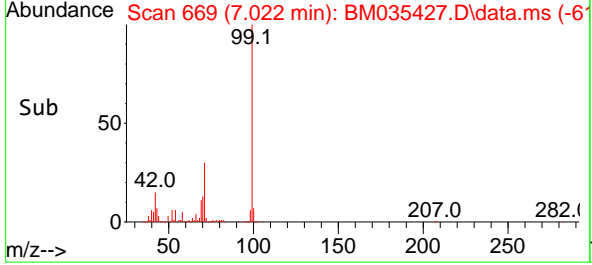
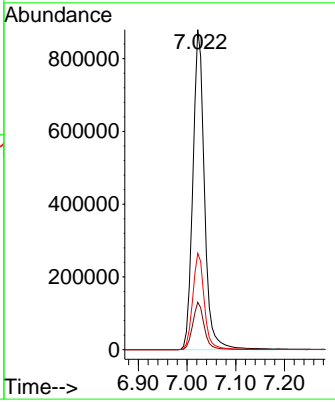
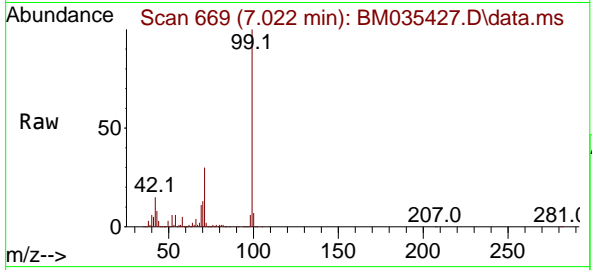


#7  
 Phenol-d6  
 Concen: 144.217 ng  
 RT: 7.022 min Scan# 60  
 Delta R.T. -0.006 min  
 Lab File: BM035427.D  
 Acq: 08 Jun 2022 13:16

Instrument : BNA\_M  
 ClientSampleId : PB145400BL

Tgt Ion: 99 Resp: 1464210

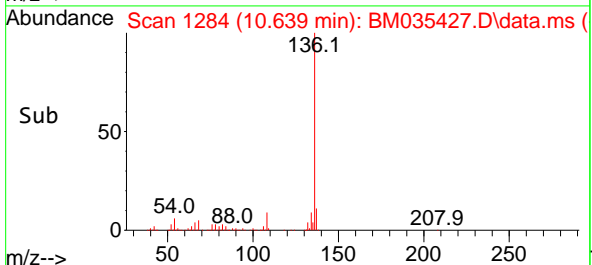
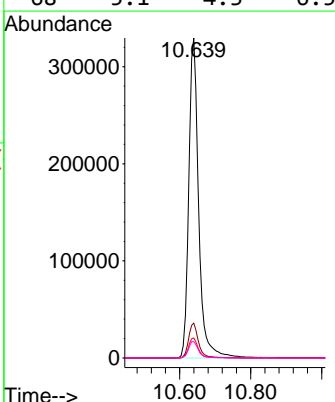
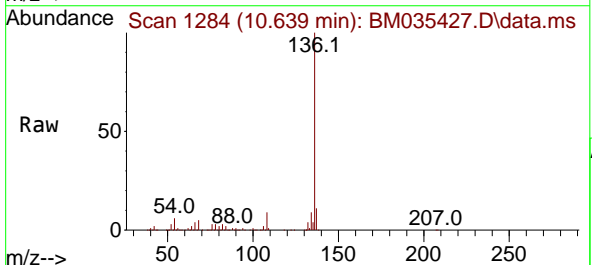
Ion	Ratio	Lower	Upper
99	100		
42	14.8	18.8	28.2#
71	30.1	30.2	45.2#

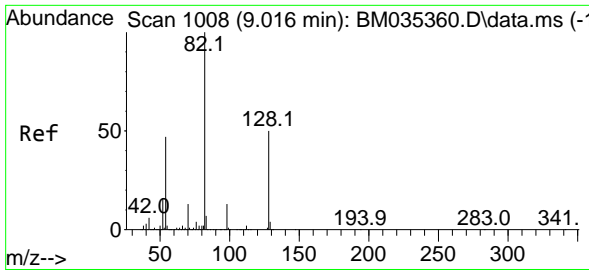


#21  
 Naphthalene-d8  
 Concen: 20.000 ng  
 RT: 10.639 min Scan# 1284  
 Delta R.T. -0.000 min  
 Lab File: BM035427.D  
 Acq: 08 Jun 2022 13:16

Tgt Ion: 136 Resp: 638939

Ion	Ratio	Lower	Upper
136	100		
137	10.9	8.9	13.3
54	6.2	7.0	10.4#
68	5.1	4.3	6.5

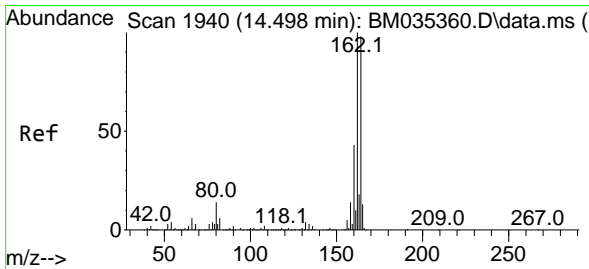
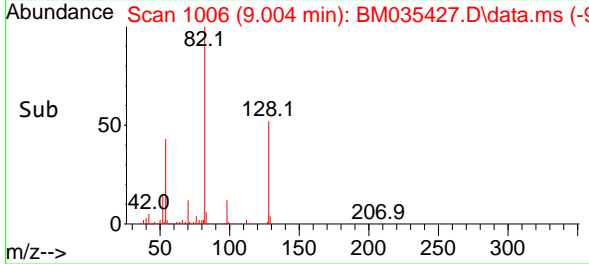
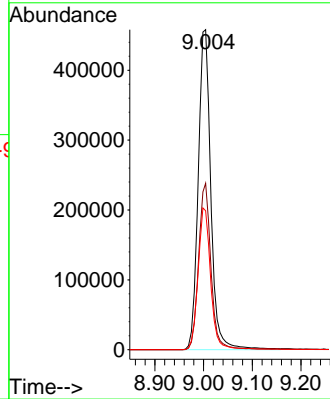
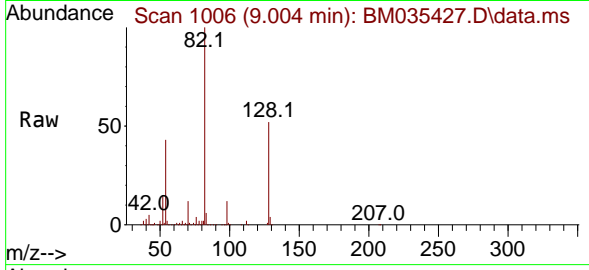




#23  
 Nitrobenzene-d5  
 Concen: 82.535 ng  
 RT: 9.004 min Scan# 1008  
 Delta R.T. -0.000 min  
 Lab File: BM035427.D  
 Acq: 08 Jun 2022 13:16

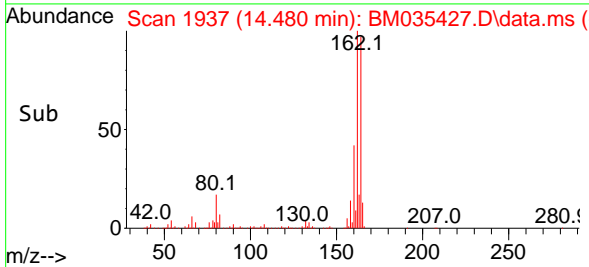
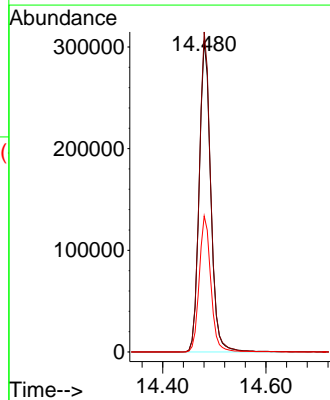
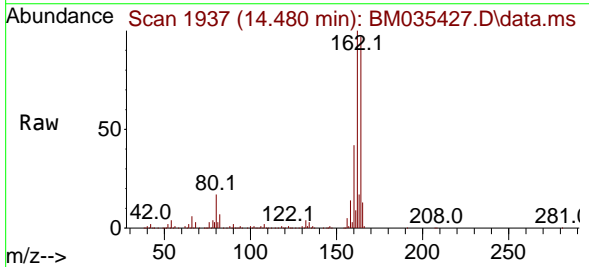
Instrument :  
 BNA\_M  
 ClientSampleId :  
 PB145400BL

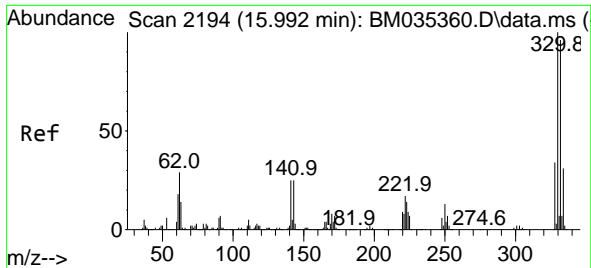
Tgt Ion: 82 Resp: 830521  
 Ion Ratio Lower Upper  
 82 100  
 128 52.0 33.7 50.5#  
 54 43.4 43.2 64.8



#39  
 Acenaphthene-d10  
 Concen: 20.000 ng  
 RT: 14.480 min Scan# 1937  
 Delta R.T. -0.006 min  
 Lab File: BM035427.D  
 Acq: 08 Jun 2022 13:16

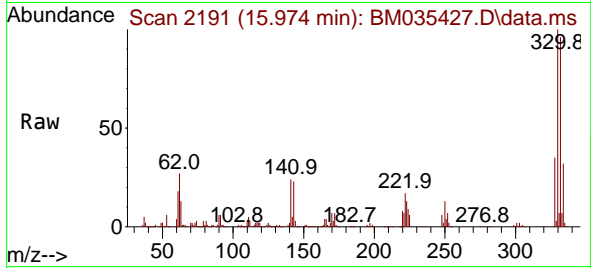
Tgt Ion:164 Resp: 473868  
 Ion Ratio Lower Upper  
 164 100  
 162 102.8 83.0 124.6  
 160 43.7 37.0 55.4



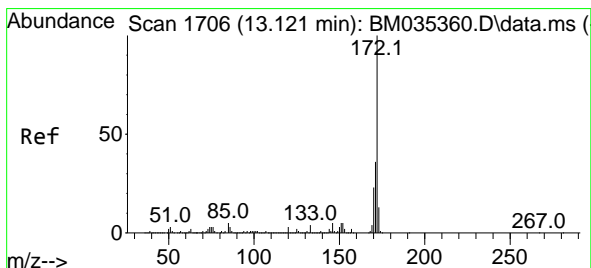
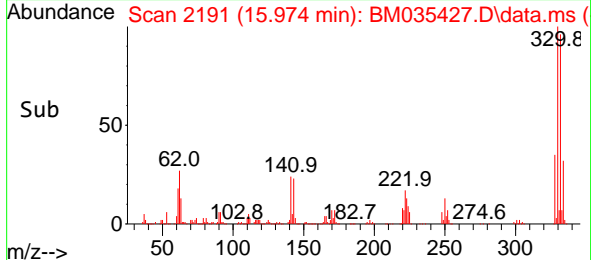
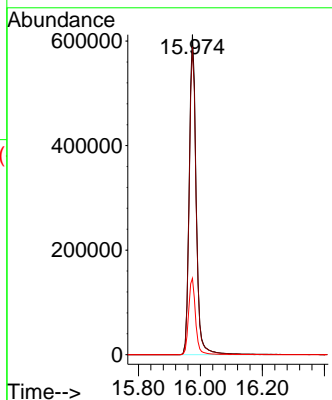


#42  
 2,4,6-Tribromophenol  
 Concen: 125.626 ng  
 RT: 15.974 min Scan# 21  
 Delta R.T. -0.006 min  
 Lab File: BM035427.D  
 Acq: 08 Jun 2022 13:16

Instrument :  
 BNA\_M  
 ClientSampleId :  
 PB145400BL

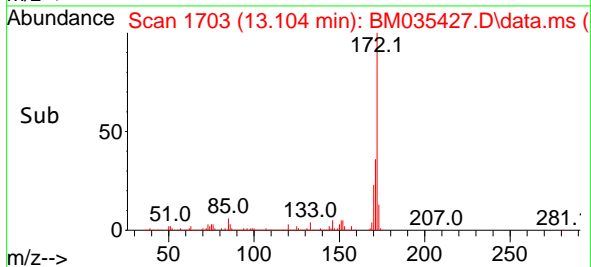
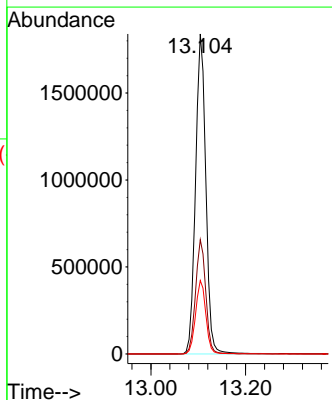
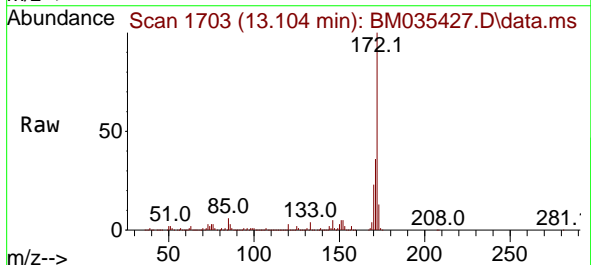


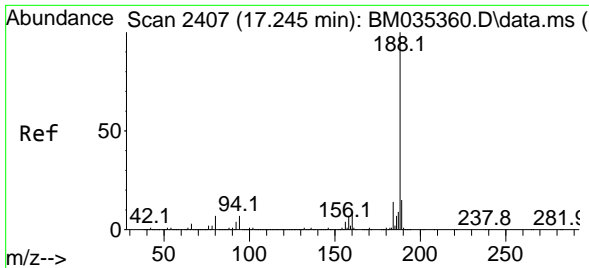
Tgt Ion:330 Resp: 955143  
 Ion Ratio Lower Upper  
 330 100  
 332 96.1 77.0 115.4  
 141 23.9 35.3 52.9#



#45  
 2-Fluorobiphenyl  
 Concen: 84.307 ng  
 RT: 13.104 min Scan# 1703  
 Delta R.T. -0.006 min  
 Lab File: BM035427.D  
 Acq: 08 Jun 2022 13:16

Tgt Ion:172 Resp: 2781529  
 Ion Ratio Lower Upper  
 172 100  
 171 35.7 28.5 42.7  
 170 23.0 18.7 28.1



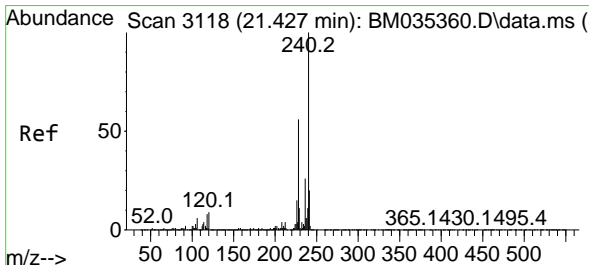
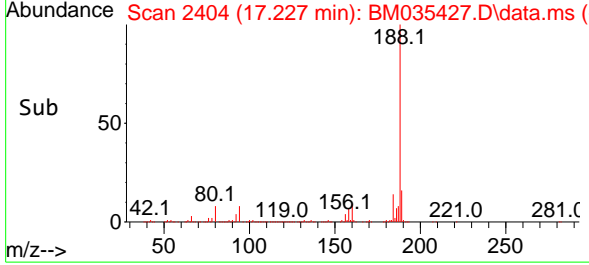
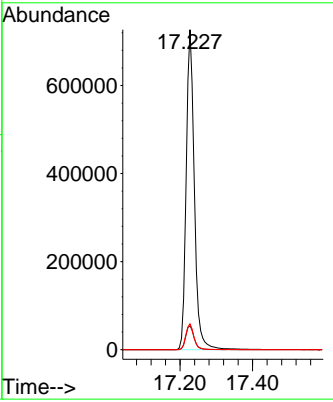
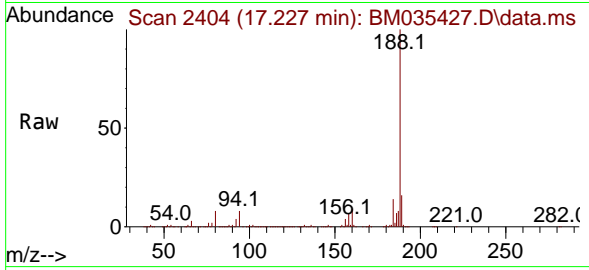


#64  
 Phenanthrene-d10  
 Concen: 20.000 ng  
 RT: 17.227 min Scan# 24  
 Delta R.T. -0.000 min  
 Lab File: BM035427.D  
 Acq: 08 Jun 2022 13:16

Instrument : BNA\_M  
 ClientSampleId : PB145400BL

Tgt Ion:188 Resp: 1135316

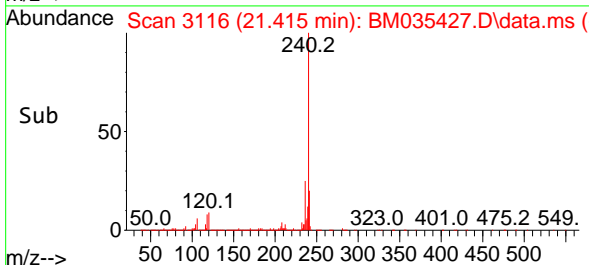
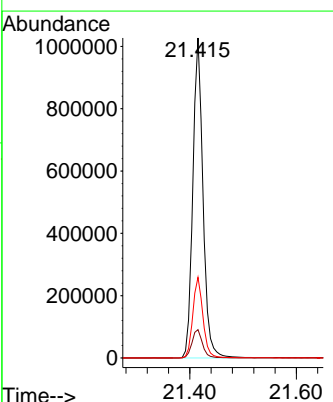
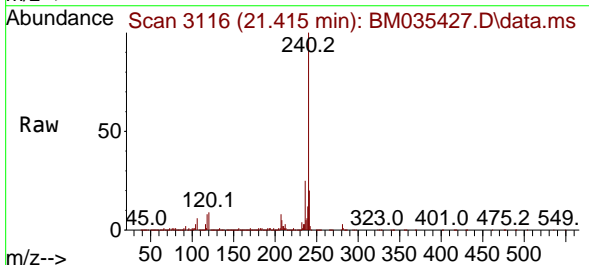
Ion	Ratio	Lower	Upper
188	100		
94	7.5	7.0	10.4
80	8.1	7.6	11.4

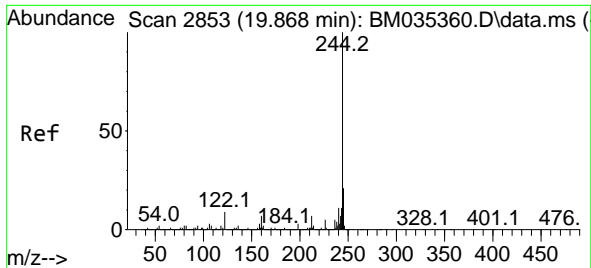


#76  
 Chrysene-d12  
 Concen: 20.000 ng  
 RT: 21.415 min Scan# 3116  
 Delta R.T. -0.006 min  
 Lab File: BM035427.D  
 Acq: 08 Jun 2022 13:16

Tgt Ion:240 Resp: 1364325

Ion	Ratio	Lower	Upper
240	100		
120	8.9	9.4	14.0#
236	25.2	20.6	30.8

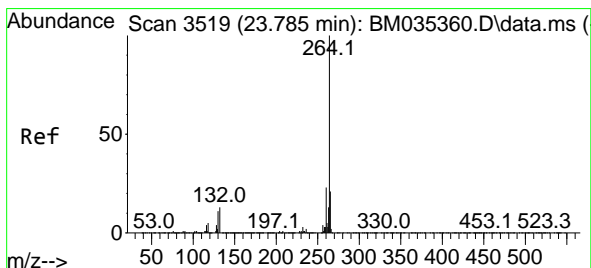
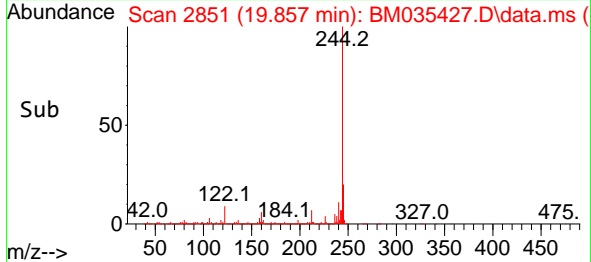
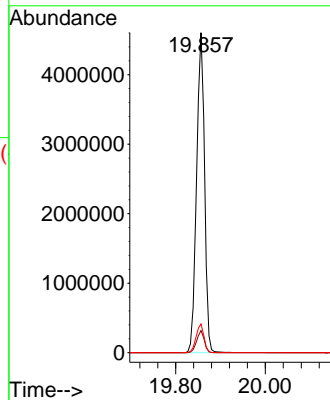
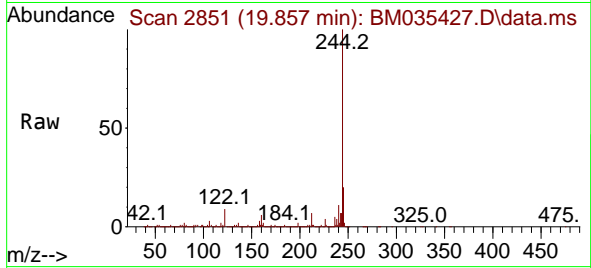




#79  
 Terphenyl-d14  
 Concen: 82.881 ng  
 RT: 19.857 min Scan# 2851  
 Delta R.T. -0.000 min  
 Lab File: BM035427.D  
 Acq: 08 Jun 2022 13:16

Instrument :  
 BNA\_M  
 ClientSampleId :  
 PB145400BL

Tgt Ion:244 Resp: 5675782  
 Ion Ratio Lower Upper  
 244 100  
 212 6.9 6.2 9.4  
 122 9.0 8.3 12.5



#86  
 Perylene-d12  
 Concen: 20.000 ng  
 RT: 23.768 min Scan# 3516  
 Delta R.T. -0.006 min  
 Lab File: BM035427.D  
 Acq: 08 Jun 2022 13:16

Tgt Ion:264 Resp: 1478535  
 Ion Ratio Lower Upper  
 264 100  
 260 23.3 18.9 28.3  
 265 22.2 17.5 26.3

