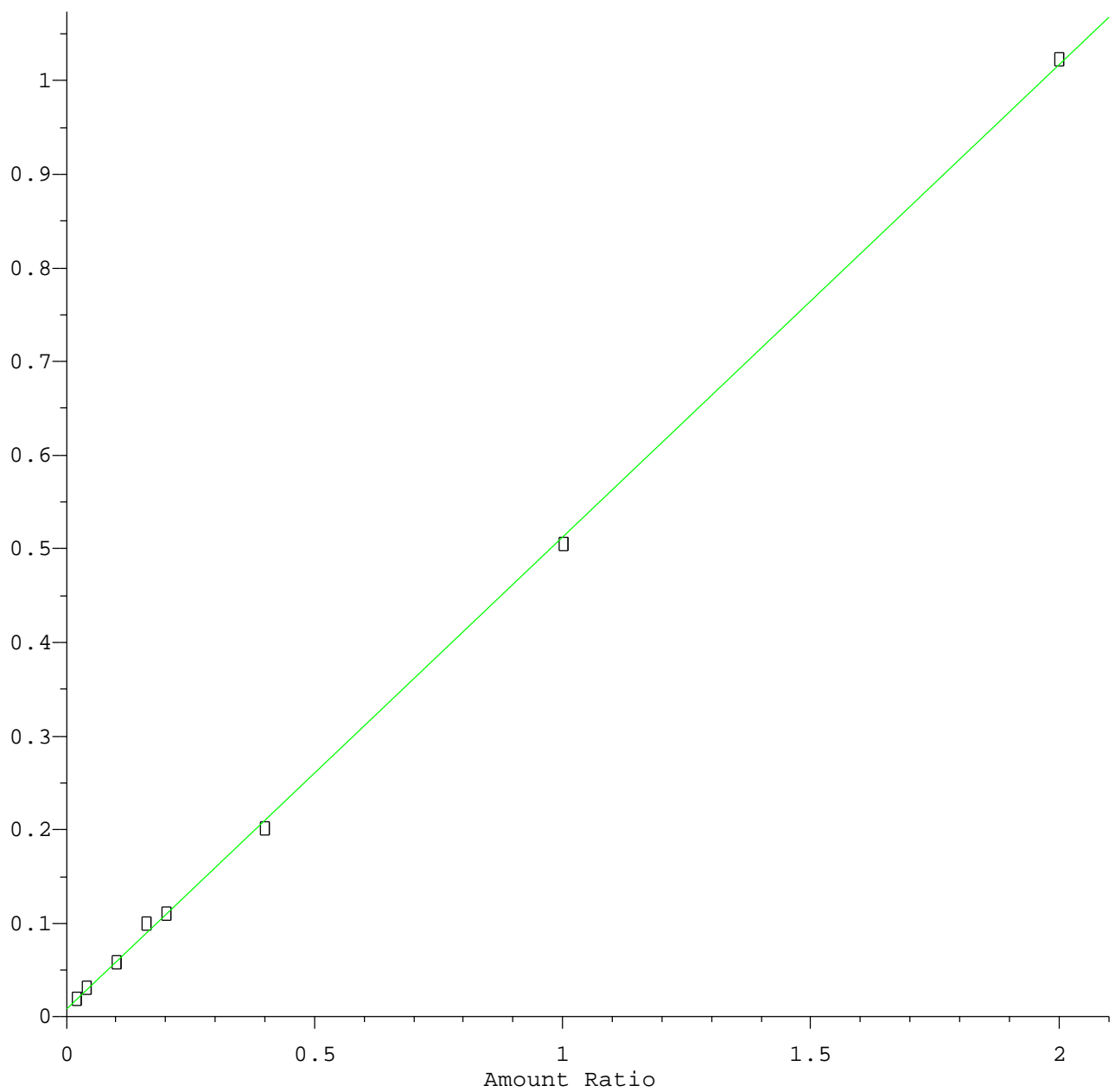


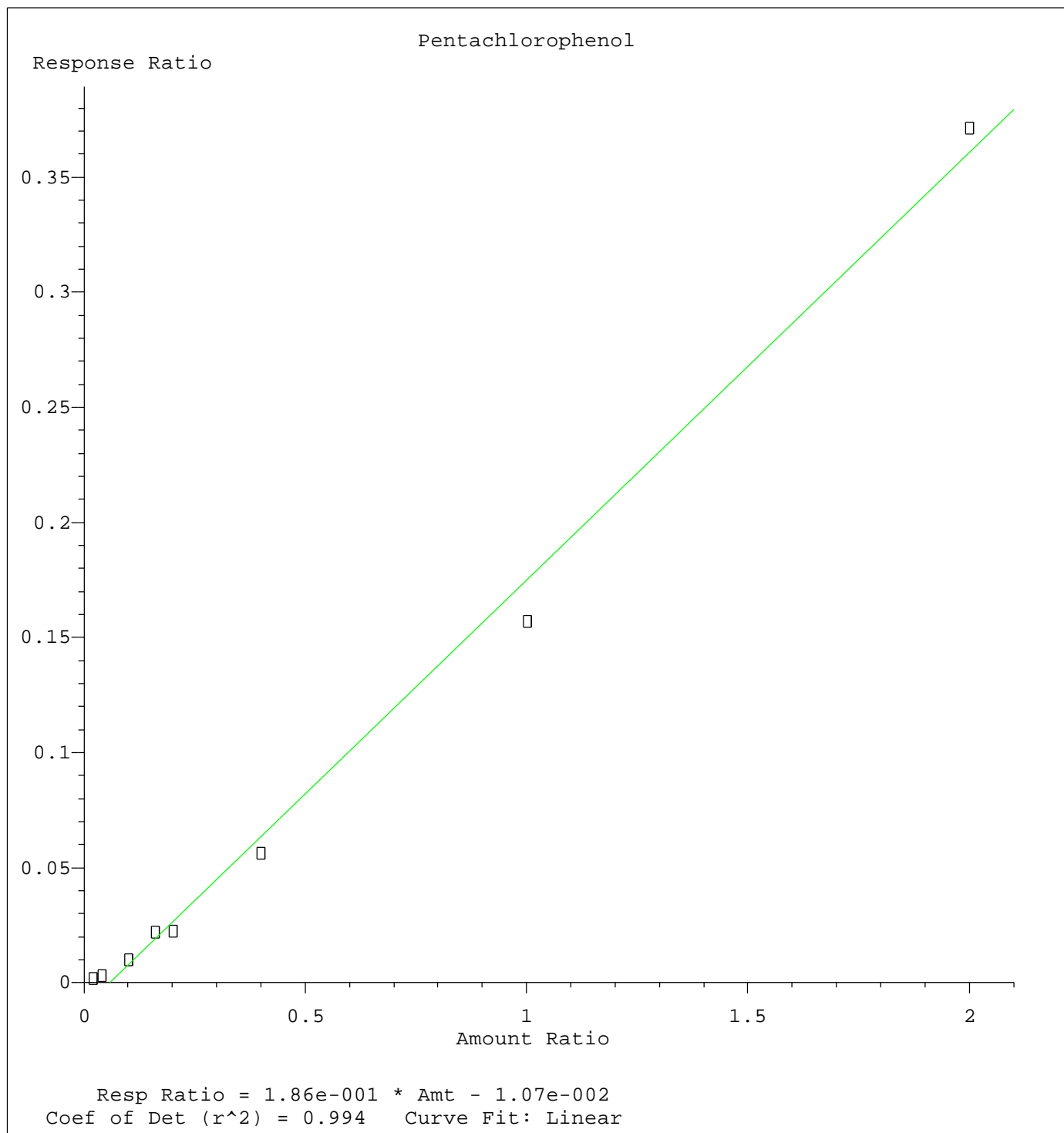
1,4-Dioxane

Response Ratio



Resp Ratio =  $5.04 \times 10^{-1} \times \text{Amt} + 8.47 \times 10^{-3}$   
Coef of Det ( $r^2$ ) = 1.000    Curve Fit: Linear

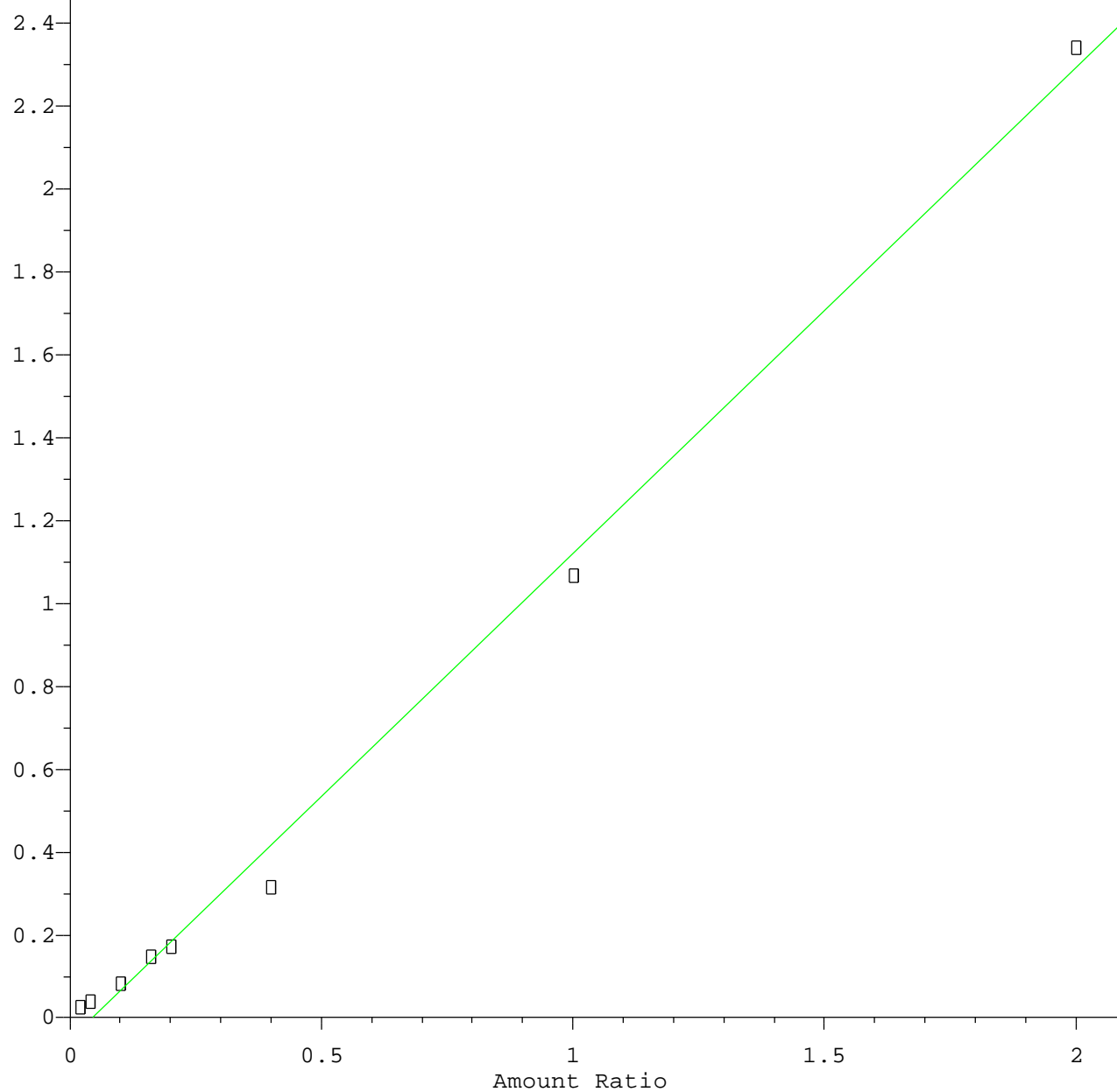
Method Name: Z:\HPCHEM1\BNA\_M\METHODS\SIM-BM061215.M  
Calibration Table Last Updated: Fri Jun 12 16:27:37 2015



Method Name: Z:\HPCHEM1\BNA\_M\METHODS\SIM-BM061215.M  
Calibration Table Last Updated: Fri Jun 12 16:27:37 2015

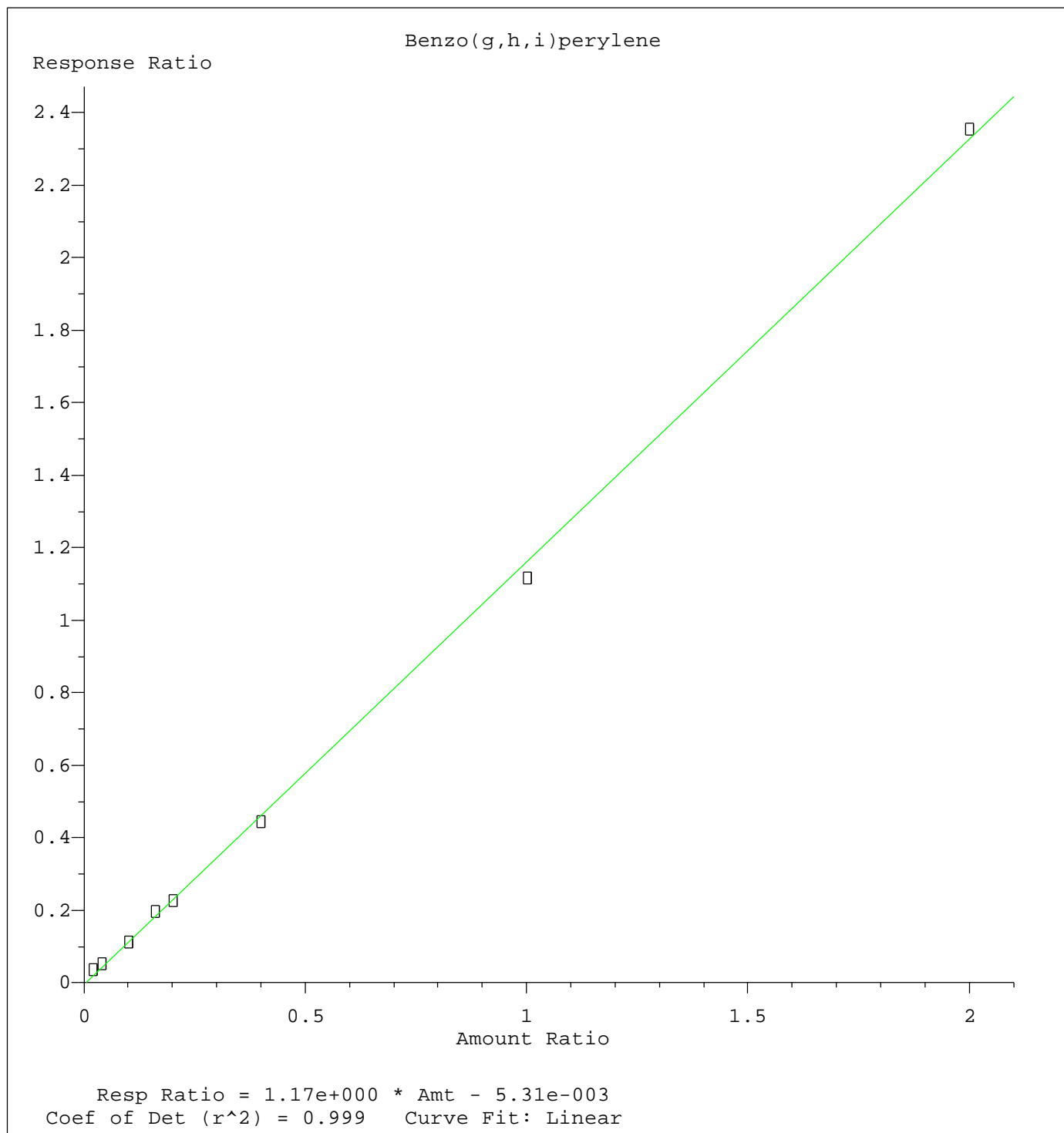
Bis(2-ethylhexyl)phthalate

Response Ratio



Resp Ratio = 1.17e+000 \* Amt - 5.22e-002  
Coef of Det (r^2) = 0.995 Curve Fit: Linear

Method Name: Z:\HPCHEM1\BNA\_M\METHODS\SIM-BM061215.M  
Calibration Table Last Updated: Fri Jun 12 16:27:37 2015



Method Name: Z:\HPCHEM1\BNA\_M\METHODS\SIM-BM061215.M  
Calibration Table Last Updated: Fri Jun 12 16:27:37 2015