

Data Path : Z:\svoasrv\HPCHEM1\BNA_M\Data\BM061324\
 Data File : BM046025.D
 Acq On : 13 Jun 2024 15:57
 Operator : MA/JU
 Sample : P2648-01
 Misc :
 ALS Vial : 9 Sample Multiplier: 1

Instrument :
 BNA_M
 ClientSampleId :
 BHBT7

Integration Parameters: LSCINT.P

Integrator: RTE
 Smoothing : OFF Filtering: 5
 Sampling : 1 Min Area: 0.1 % of largest Peak
 Start Thrs: 0.2 Max Peaks: 100
 Stop Thrs : 0 Peak Location: TOP

If leading or trailing edge < 100 prefer < Baseline drop else tangent >
 Peak separation: 5

Method : Z:\svoasrv\HPCHEM1\BNA_M\Methods\SFAM-EPA-BM053124.MA.M
 Title : SVOA CALIBRATION

Signal : TIC: BM046025.D\data.ms

peak #	R.T. min	first scan	max scan	last scan	PK TY	peak height	corr. area	corr. % max.	% of total
1	3.528	85	92	101	rVB2	48182	81481	2.19%	0.142%
2	4.269	214	218	223	rVB	33548	48044	1.29%	0.084%
3	4.628	273	279	285	rBV	64267	108450	2.91%	0.189%
4	6.692	624	630	643	rVV	456034	902266	24.25%	1.576%
5	6.804	643	649	661	rVV	332551	618495	16.62%	1.080%
6	6.998	676	682	691	rBV	523826	850460	22.85%	1.485%
7	7.434	748	756	770	rBV	565631	888430	23.87%	1.551%
8	7.975	842	848	855	rBV5	21994	48572	1.31%	0.085%
9	8.204	881	887	897	rBV	496836	950771	25.55%	1.660%
10	8.281	897	900	910	rVB	58609	109395	2.94%	0.191%
11	8.604	946	955	963	rBV	478368	879700	23.64%	1.536%
12	9.239	1058	1063	1069	rBV5	20084	49671	1.33%	0.087%
13	9.310	1069	1075	1090	rVB	420694	761314	20.46%	1.329%
14	9.869	1162	1170	1192	rBV	449395	1002553	26.94%	1.751%
15	10.204	1219	1227	1233	rBV	679087	1206248	32.42%	2.106%
16	10.392	1252	1259	1276	rBV	211593	532667	14.31%	0.930%
17	11.010	1356	1364	1375	rBV3	38308	117807	3.17%	0.206%
18	11.657	1465	1474	1479	rVV4	23909	50584	1.36%	0.088%
19	11.875	1505	1511	1519	rBV	29989	55071	1.48%	0.096%
20	12.104	1545	1550	1556	rVB	29975	53271	1.43%	0.093%
21	12.916	1682	1688	1695	rBV2	34566	55089	1.48%	0.096%
22	13.398	1765	1770	1775	rVB3	36666	67166	1.80%	0.117%
23	13.451	1775	1779	1784	rBV2	30557	47565	1.28%	0.083%
24	13.527	1784	1792	1799	rBV	885304	1323382	35.56%	2.311%
25	13.769	1827	1833	1846	rBV	1082663	1791089	48.13%	3.128%
26	13.998	1865	1872	1877	rBV2	38848	64179	1.72%	0.112%
27	14.080	1877	1886	1892	rBV	972840	1453650	39.06%	2.538%
28	14.145	1893	1897	1906	rVB	47118	95566	2.57%	0.167%
29	14.351	1923	1932	1935	rVV2	311736	528873	14.21%	0.924%
30	14.392	1935	1939	1951	rVV	359770	785041	21.10%	1.371%
31	14.486	1952	1955	1964	rVV4	53519	134833	3.62%	0.235%
32	14.568	1964	1969	1975	rVV2	45080	81431	2.19%	0.142%
33	14.704	1987	1992	1997	rBV5	25586	47639	1.28%	0.083%
34	14.880	2014	2022	2028	rBV8	26600	73905	1.99%	0.129%
35	14.957	2031	2035	2039	rVB3	48724	59571	1.60%	0.104%
36	15.080	2050	2056	2062	rVV	1370489	1922411	51.66%	3.357%

Data Path : Z:\svoasrv\HPCHEM1\BNA_M\Data\BM061324\
 Data File : BM046025.D
 Acq On : 13 Jun 2024 15:57
 Operator : MA/JU
 Sample : P2648-01
 Misc :
 ALS Vial : 9 Sample Multiplier: 1

Instrument :
 BNA_M
 ClientSampleId :
 BHBT7

Integration Parameters: LSCINT.P

Integrator: RTE
 Smoothing : OFF Filtering: 5
 Sampling : 1 Min Area: 0.1 % of largest Peak
 Start Thrs: 0.2 Max Peaks: 100
 Stop Thrs : 0 Peak Location: TOP

If leading or trailing edge < 100 prefer < Baseline drop else tangent >
 Peak separation: 5

Method : Z:\svoasrv\HPCHEM1\BNA_M\Methods\SFAM-EPA-BM053124.MA.M
 Title : SVOA CALIBRATION

37	15.133	2062	2065	2071	rVB3	59037	80989	2.18%	0.141%
38	15.233	2076	2082	2093	rBV	309060	484925	13.03%	0.847%
39	15.368	2101	2105	2111	rVB7	25221	49710	1.34%	0.087%
40	15.439	2112	2117	2127	rVB3	29686	55739	1.50%	0.097%
41	15.586	2139	2142	2150	rVB3	27777	54730	1.47%	0.096%
42	15.815	2177	2181	2184	rBV2	78374	117150	3.15%	0.205%
43	16.139	2230	2236	2242	rVV7	24713	68949	1.85%	0.120%
44	16.286	2256	2261	2266	rBV9	26929	49519	1.33%	0.086%
45	16.492	2292	2296	2304	rVB2	65901	108561	2.92%	0.190%
46	16.610	2313	2316	2318	rVV2	45608	61580	1.65%	0.108%
47	16.651	2318	2323	2332	rVB	62960	136771	3.68%	0.239%
48	16.827	2347	2353	2357	rVV	1242191	1662219	44.67%	2.903%
49	16.868	2357	2360	2365	rVV	994391	1297830	34.88%	2.266%
50	16.927	2365	2370	2374	rVV	1398914	1986399	53.38%	3.469%
51	16.962	2374	2376	2383	rVB	196798	231885	6.23%	0.405%
52	17.033	2383	2388	2393	rBV4	46782	79248	2.13%	0.138%
53	17.251	2417	2425	2432	rBV2	95210	211413	5.68%	0.369%
54	17.345	2437	2441	2449	rVV3	50801	133551	3.59%	0.233%
55	17.409	2449	2452	2462	rVB5	43773	97800	2.63%	0.171%
56	17.698	2497	2501	2506	rBV	180191	258057	6.93%	0.451%
57	17.756	2506	2511	2518	rVV2	798628	1323203	35.56%	2.311%
58	17.821	2519	2522	2528	rVV2	141318	274380	7.37%	0.479%
59	17.892	2529	2534	2538	rVV2	308616	541872	14.56%	0.946%
60	17.933	2538	2541	2551	rVB	153463	219114	5.89%	0.383%
61	18.027	2553	2557	2560	rVV3	57959	78876	2.12%	0.138%
62	18.062	2560	2563	2566	rVV5	39486	55420	1.49%	0.097%
63	18.209	2584	2588	2592	rBV	124378	155909	4.19%	0.272%
64	18.256	2592	2596	2602	rVB2	191587	263751	7.09%	0.461%
65	18.456	2628	2630	2635	rVB3	56086	60049	1.61%	0.105%
66	18.509	2635	2639	2642	rVV	78634	95445	2.56%	0.167%
67	18.545	2643	2645	2650	rVB	56154	64532	1.73%	0.113%
68	18.627	2655	2659	2663	rBV	174245	264693	7.11%	0.462%
69	18.674	2663	2667	2673	rVV4	104039	230641	6.20%	0.403%
70	18.721	2673	2675	2679	rVB	62571	62547	1.68%	0.109%
71	18.774	2679	2684	2691	rBV2	149923	290078	7.80%	0.507%
72	18.892	2699	2704	2712	rBV	2447741	3128828	84.08%	5.464%
73	18.998	2719	2722	2726	rVB	58935	65626	1.76%	0.115%
74	19.045	2726	2730	2737	rBV2	337946	599179	16.10%	1.046%
75	19.227	2756	2761	2764	rBV	1748475	2686834	72.20%	4.692%
76	19.256	2764	2766	2771	rVB	1793535	1932742	51.94%	3.375%

Data Path : Z:\svoasrv\HPCHEM1\BNA_M\Data\BM061324\
 Data File : BM046025.D
 Acq On : 13 Jun 2024 15:57
 Operator : MA/JU
 Sample : P2648-01
 Misc :
 ALS Vial : 9 Sample Multiplier: 1

Instrument :
 BNA_M
 ClientSampleId :
 BHBT7

Integration Parameters: LSCINT.P

Integrator: RTE
 Smoothing : OFF Filtering: 5
 Sampling : 1 Min Area: 0.1 % of largest Peak
 Start Thrs: 0.2 Max Peaks: 100
 Stop Thrs : 0 Peak Location: TOP

If leading or trailing edge < 100 prefer < Baseline drop else tangent >
 Peak separation: 5

Method : Z:\svoasrv\HPCHEM1\BNA_M\Methods\SFAM-EPA-BM053124.MA.M
 Title : SVOA CALIBRATION

77	19.339	2776	2780	2784	rBV2	111714	167773	4.51%	0.293%
78	19.439	2795	2797	2803	rVB2	93833	123387	3.32%	0.215%
79	19.586	2818	2822	2829	rBV4	142200	294513	7.91%	0.514%
80	19.727	2842	2846	2848	rBV4	155140	244426	6.57%	0.427%
81	19.756	2848	2851	2855	rVB	267870	357025	9.59%	0.623%
82	19.862	2865	2869	2872	rBV	187821	234465	6.30%	0.409%
83	19.915	2875	2878	2882	rVB2	201529	285201	7.66%	0.498%
84	20.103	2907	2910	2913	rBV	107315	156307	4.20%	0.273%
85	20.180	2920	2923	2927	rVB2	251199	278357	7.48%	0.486%
86	20.286	2938	2941	2945	rBV	177901	200063	5.38%	0.349%
87	20.509	2976	2979	2986	rVB	251957	345446	9.28%	0.603%
88	20.668	3004	3006	3010	rVB3	205577	233758	6.28%	0.408%
89	20.715	3011	3014	3016	rVV	175980	184908	4.97%	0.323%
90	20.750	3017	3020	3026	rVV2	556783	760697	20.44%	1.328%
91	20.968	3054	3057	3062	rBV	682088	837195	22.50%	1.462%
92	21.039	3062	3069	3073	rVV2	1671629	3721208	100.00%	6.498%
93	21.080	3073	3076	3088	rVB	1204425	1701749	45.73%	2.972%
94	21.733	3184	3187	3190	rBV	348101	479289	12.88%	0.837%
95	22.909	3381	3387	3392	rBV	855179	2242859	60.27%	3.917%
96	22.956	3392	3395	3401	rVB	951470	1552360	41.72%	2.711%
97	23.568	3494	3499	3504	rVV2	587840	1133952	30.47%	1.980%
98	23.621	3505	3508	3518	rVB	486117	942420	25.33%	1.646%
99	23.750	3524	3530	3537	rVB	778007	1841992	49.50%	3.217%
100	24.615	3672	3677	3687	rVB2	622287	1477403	39.70%	2.580%

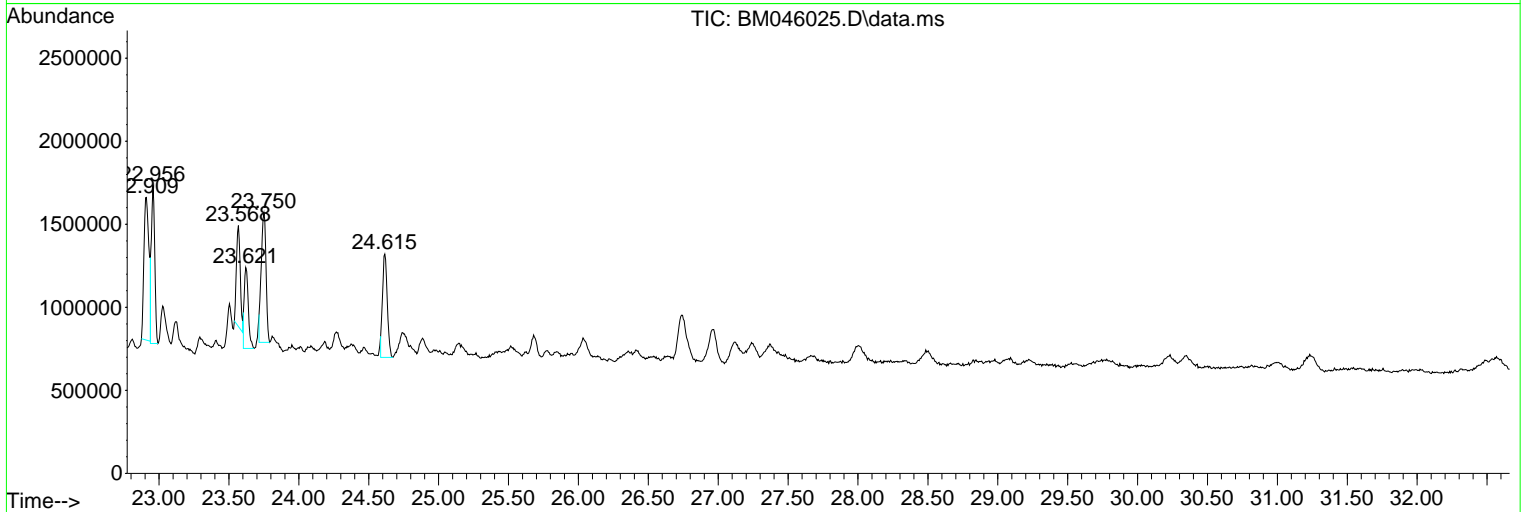
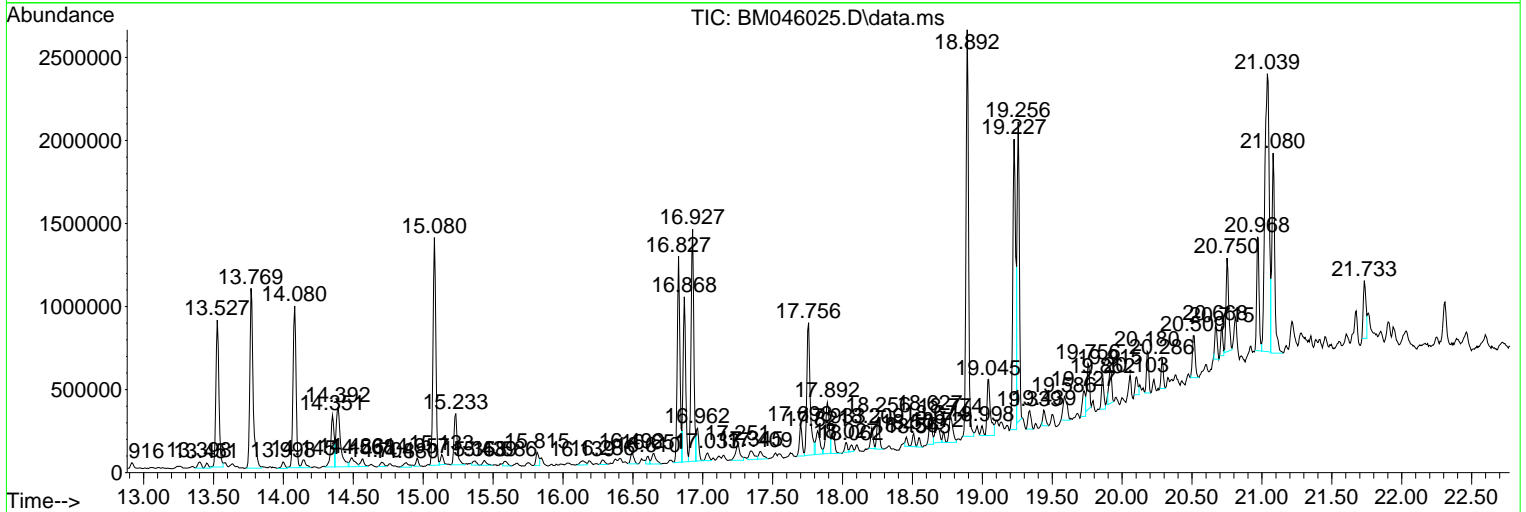
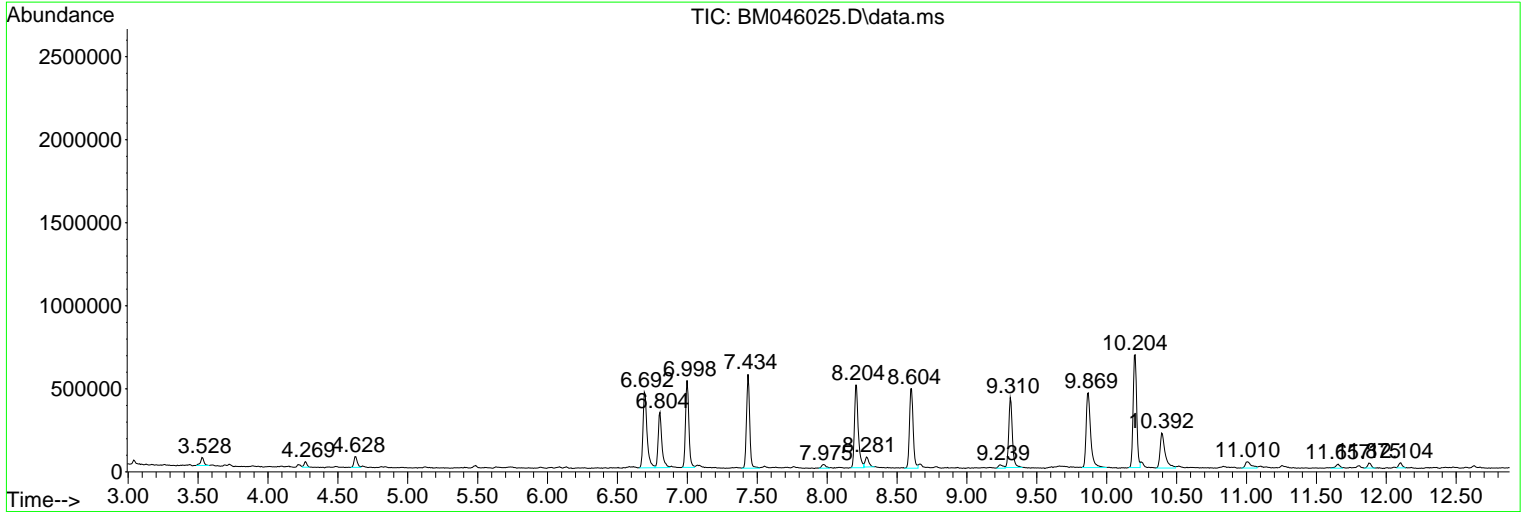
Sum of corrected areas: 57264137

Data Path : Z:\svoasrv\HPCHEM1\BNA_M\Data\BM061324\
 Data File : BM046025.D
 Acq On : 13 Jun 2024 15:57
 Operator : MA/JU
 Sample : P2648-01
 Misc :
 ALS Vial : 9 Sample Multiplier: 1

Instrument :
 BNA_M
ClientSampleId :
 BHBT7

Quant Method : Z:\svoasrv\HPCHEM1\BNA_M\Methods\SFAM-EPA-BM053124.MA.M
 Quant Title : SVOA CALIBRATION

TIC Library : C:\Database\NIST20.L
 TIC Integration Parameters: LSCINT.P



Data Path : Z:\svoasrv\HPCHEM1\BNA_M\Data\BM061324\
 Data File : BM046025.D
 Acq On : 13 Jun 2024 15:57
 Operator : MA/JU
 Sample : P2648-01
 Misc :
 ALS Vial : 9 Sample Multiplier: 1

Instrument :
 BNA_M
 ClientSampleId :
 BHBT7

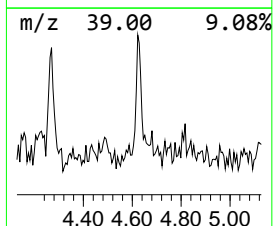
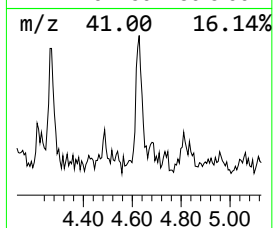
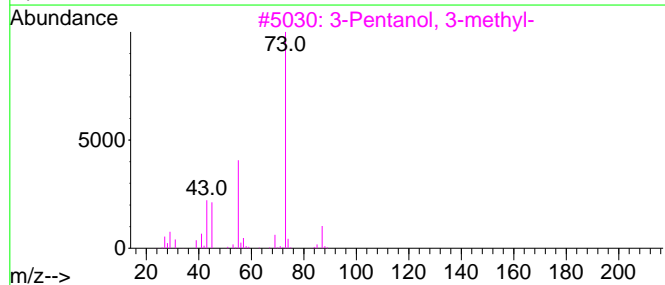
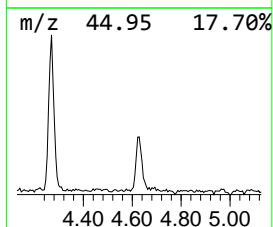
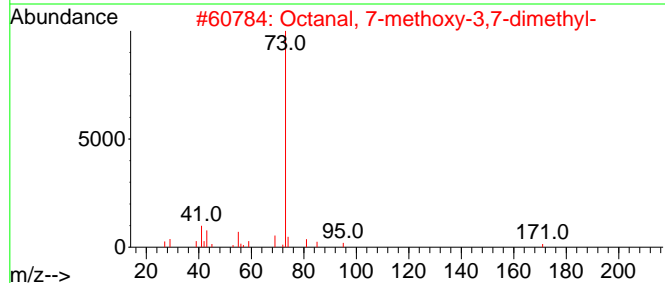
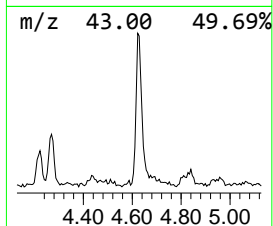
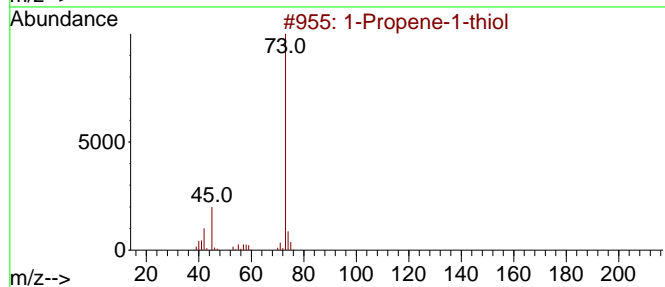
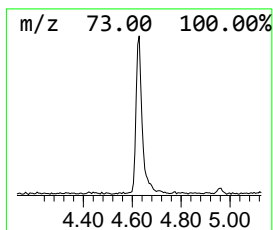
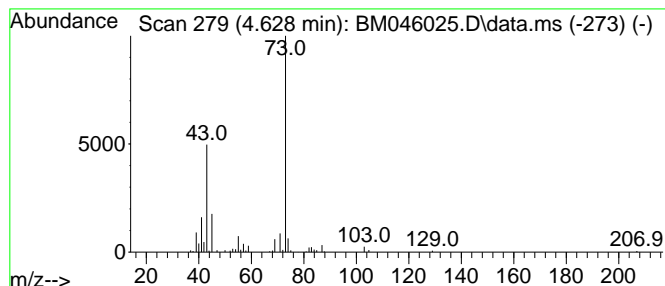
Quant Method : Z:\svoasrv\HPCHEM1\BNA_M\Methods\SFAM-EPA-BM053124.MA.M
 Quant Title : SVOA CALIBRATION

TIC Library : C:\Database\NIST20.L
 TIC Integration Parameters: LSCINT.P

 Peak Number 1 unknown-01 Concentration Rank 13

R.T.	EstConc	Area	Relative to ISTD	R.T.
4.628	2.44 ng/ul	108450	1,4-Dichlorobenzene-d4	7.434

Hit#	of 5	Tentative ID	MW	MolForm	CAS#	Qual
1		1-Propene-1-thiol	74	C3H6S	000925-89-3	42
2		Octanal, 7-methoxy-3,7-dimethyl-	186	C11H22O2	003613-30-7	40
3		3-Pentanol, 3-methyl-	102	C6H14O	000077-74-7	36
4		Methane, isothiocyanato-	73	C2H3NS	000556-61-6	9
5		Silane, tetramethyl-	88	C4H12Si	000075-76-3	9



Data Path : Z:\svoasrv\HPCHEM1\BNA_M\Data\BM061324\
 Data File : BM046025.D
 Acq On : 13 Jun 2024 15:57
 Operator : MA/JU
 Sample : P2648-01
 Misc :
 ALS Vial : 9 Sample Multiplier: 1

Instrument :
 BNA_M
 ClientSampleId :
 BHBT7

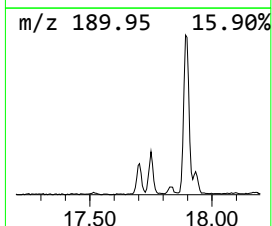
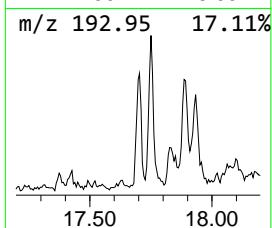
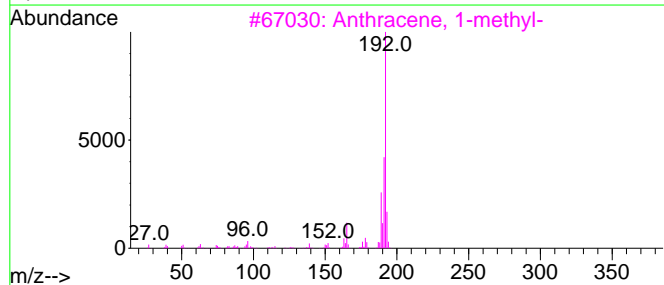
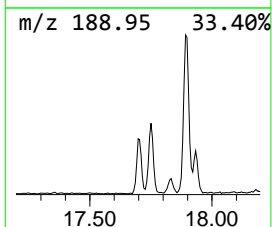
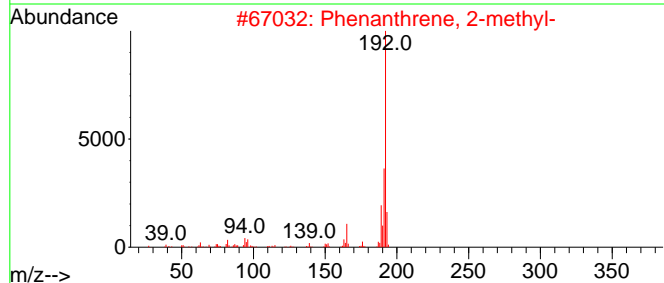
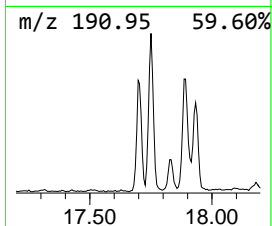
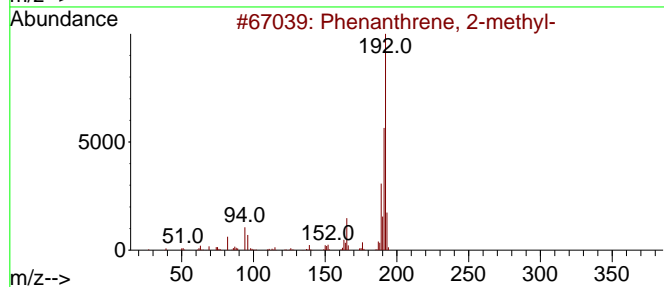
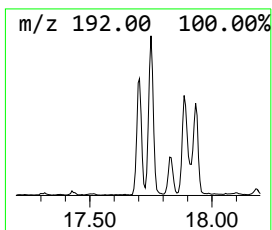
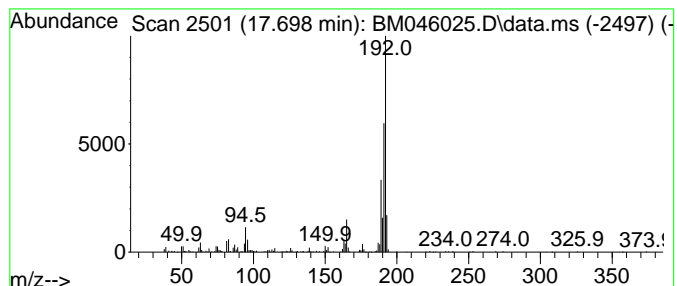
Quant Method : Z:\svoasrv\HPCHEM1\BNA_M\Methods\SFAM-EPA-BM053124.MA.M
 Quant Title : SVOA CALIBRATION

TIC Library : C:\Database\NIST20.L
 TIC Integration Parameters: LSCINT.P

 Peak Number 2 Phenanthrene, 2-methyl- Concentration Rank 9

R.T.	EstConc	Area	Relative to ISTD	R.T.
17.698	3.10 ng/ul	258057	Phenanthrene-d10	16.827

Hit#	of 5	Tentative ID	MW	MolForm	CAS#	Qual
1		Phenanthrene, 2-methyl-	192	C15H12	002531-84-2	97
2		Phenanthrene, 2-methyl-	192	C15H12	002531-84-2	93
3		Anthracene, 1-methyl-	192	C15H12	000610-48-0	93
4		Phenanthrene, 1-methyl-	192	C15H12	000832-69-9	93
5		Anthracene, 9-methyl-	192	C15H12	000779-02-2	91



Data Path : Z:\svoasrv\HPCHEM1\BNA_M\Data\BM061324\
 Data File : BM046025.D
 Acq On : 13 Jun 2024 15:57
 Operator : MA/JU
 Sample : P2648-01
 Misc :
 ALS Vial : 9 Sample Multiplier: 1

Instrument :
 BNA_M
 ClientSampleId :
 BHBT7

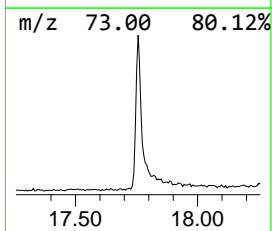
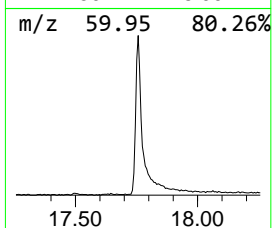
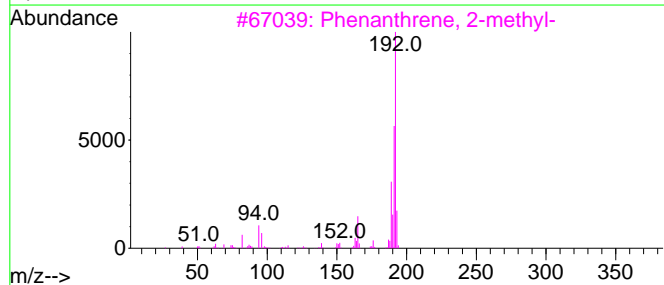
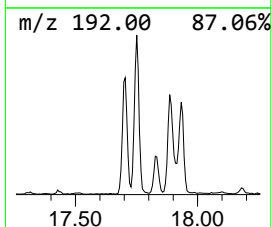
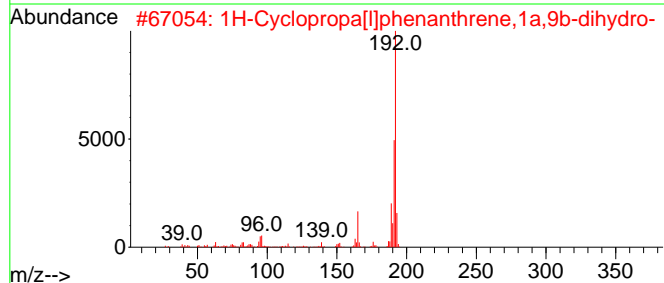
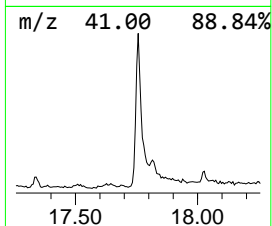
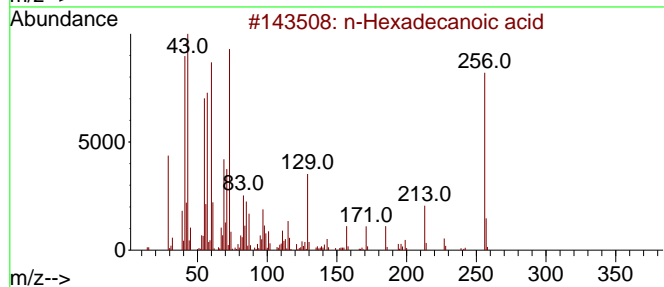
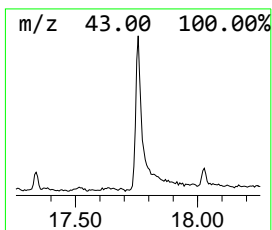
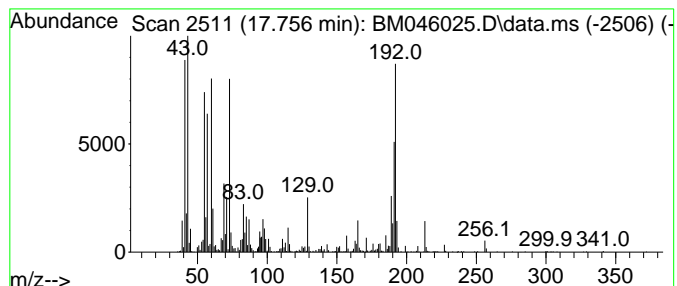
Quant Method : Z:\svoasrv\HPCHEM1\BNA_M\Methods\SFAM-EPA-BM053124.MA.M
 Quant Title : SVOA CALIBRATION

TIC Library : C:\Database\NIST20.L
 TIC Integration Parameters: LSCINT.P

 Peak Number 3 n-Hexadecanoic acid Concentration Rank 2

R.T.	EstConc	Area	Relative to ISTD	R.T.
17.756	15.92 ng/ul	1323200	Phenanthrene-d10	16.827

Hit#	of	5	Tentative ID	MW	MolForm	CAS#	Qual
1			n-Hexadecanoic acid	256	C16H32O2	000057-10-3	96
2			1H-Cyclopropa[1]phenanthrene,1a,...	192	C15H12	000949-41-7	95
3			Phenanthrene, 2-methyl-	192	C15H12	002531-84-2	95
4			Anthracene, 2-methyl-	192	C15H12	000613-12-7	94
5			Phenanthrene, 1-methyl-	192	C15H12	000832-69-9	94



Data Path : Z:\svoasrv\HPCHEM1\BNA_M\Data\BM061324\
 Data File : BM046025.D
 Acq On : 13 Jun 2024 15:57
 Operator : MA/JU
 Sample : P2648-01
 Misc :
 ALS Vial : 9 Sample Multiplier: 1

Instrument :
 BNA_M
 ClientSampleId :
 BHBT7

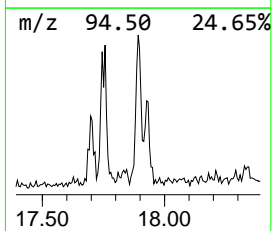
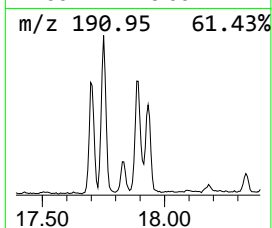
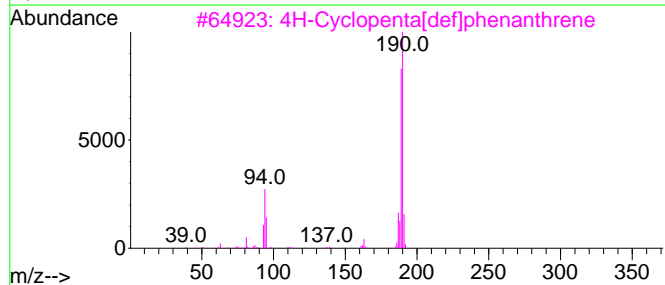
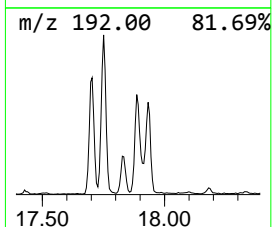
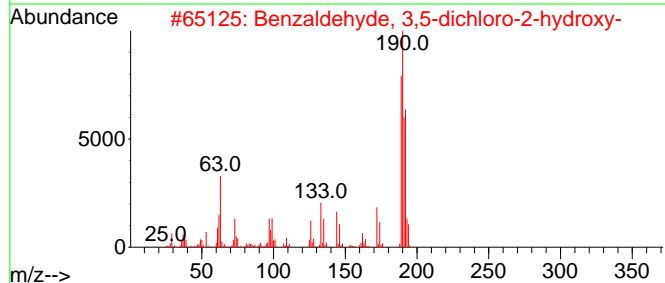
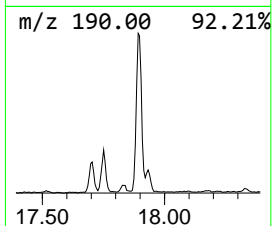
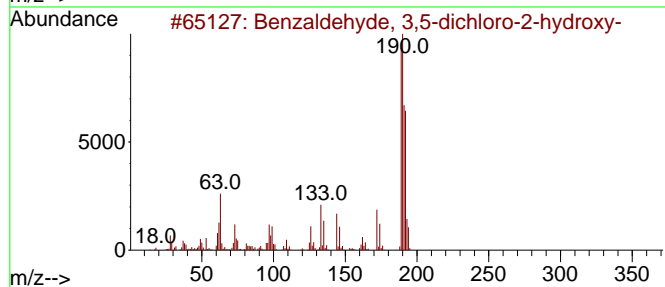
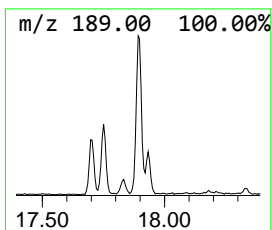
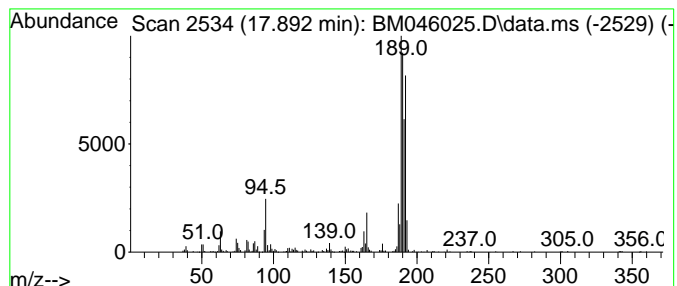
Quant Method : Z:\svoasrv\HPCHEM1\BNA_M\Methods\SFAM-EPA-BM053124.MA.M
 Quant Title : SVOA CALIBRATION

TIC Library : C:\Database\NIST20.L
 TIC Integration Parameters: LSCINT.P

 Peak Number 4 Benzaldehyde, 3,5-dichloro-... Concentration Rank 3

R.T.	EstConc	Area	Relative to ISTD	R.T.
17.892	6.52 ng/ul	541872	Phenanthrene-d10	16.827

Hit#	of	5	Tentative ID	MW	MolForm	CAS#	Qual
1			Benzaldehyde, 3,5-dichloro-2-hyd...	190	C7H4Cl2O2	000090-60-8	72
2			Benzaldehyde, 3,5-dichloro-2-hyd...	190	C7H4Cl2O2	000090-60-8	72
3			4H-Cyclopenta[def]phenanthrene	190	C15H10	000203-64-5	60
4			4H-Cyclopenta[def]phenanthrene	190	C15H10	000203-64-5	55
5			5H-Dibenzo[a,d]cycloheptene	192	C15H12	000256-81-5	46



Data Path : Z:\svoasrv\HPCHEM1\BNA_M\Data\BM061324\
 Data File : BM046025.D
 Acq On : 13 Jun 2024 15:57
 Operator : MA/JU
 Sample : P2648-01
 Misc :
 ALS Vial : 9 Sample Multiplier: 1

Instrument :
 BNA_M
 ClientSampleId :
 BHBT7

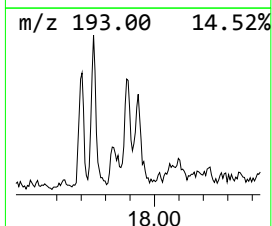
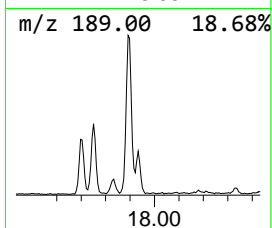
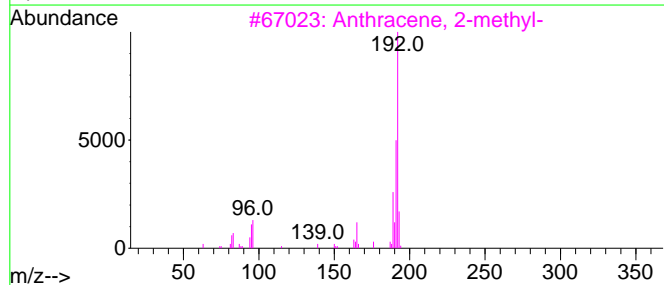
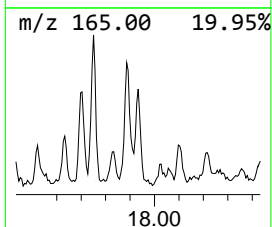
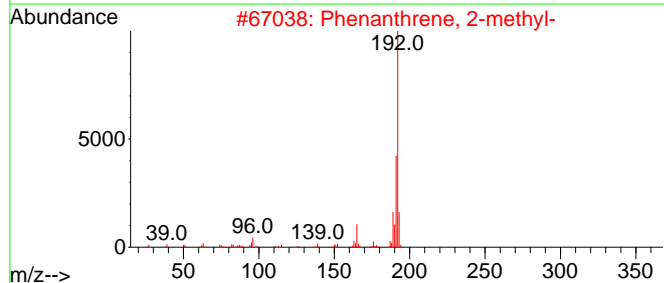
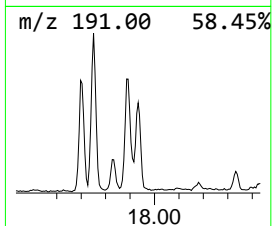
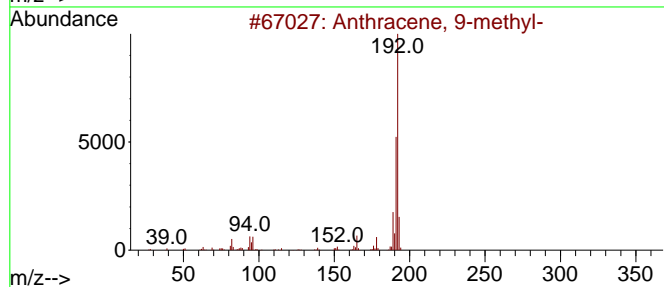
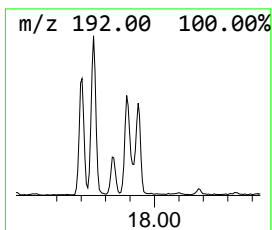
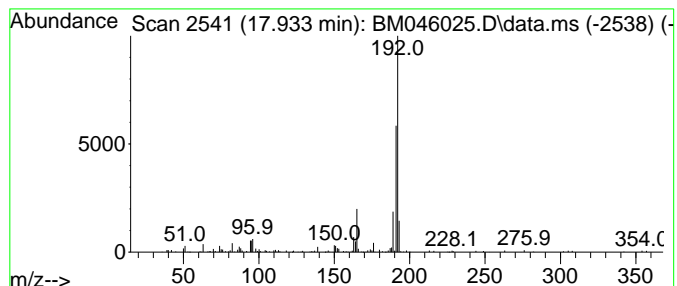
Quant Method : Z:\svoasrv\HPCHEM1\BNA_M\Methods\SFAM-EPA-BM053124.MA.M
 Quant Title : SVOA CALIBRATION

TIC Library : C:\Database\NIST20.L
 TIC Integration Parameters: LSCINT.P

 Peak Number 5 Anthracene, 9-methyl- Concentration Rank 11

R.T.	EstConc	Area	Relative to ISTD	R.T.
17.933	2.64 ng/ul	219114	Phenanthrene-d10	16.827

Hit#	of	5	Tentative ID	MW	MolForm	CAS#	Qual
1			Anthracene, 9-methyl-	192	C15H12	000779-02-2	91
2			Phenanthrene, 2-methyl-	192	C15H12	002531-84-2	91
3			Anthracene, 2-methyl-	192	C15H12	000613-12-7	91
4			1H-Cyclopropa[1]phenanthrene,1a,...	192	C15H12	000949-41-7	90
5			1a,9b-Dihydro-1H-cyclopropa[a]an...	192	C15H12	006109-24-6	90



Data Path : Z:\svoasrv\HPCHEM1\BNA_M\Data\BM061324\
 Data File : BM046025.D
 Acq On : 13 Jun 2024 15:57
 Operator : MA/JU
 Sample : P2648-01
 Misc :
 ALS Vial : 9 Sample Multiplier: 1

Instrument :
 BNA_M
 ClientSampleId :
 BHBT7

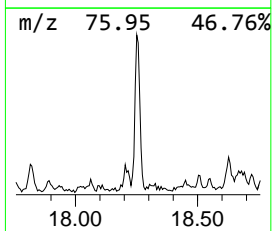
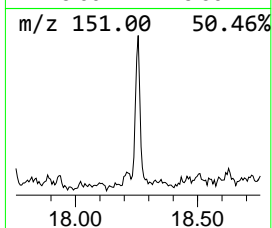
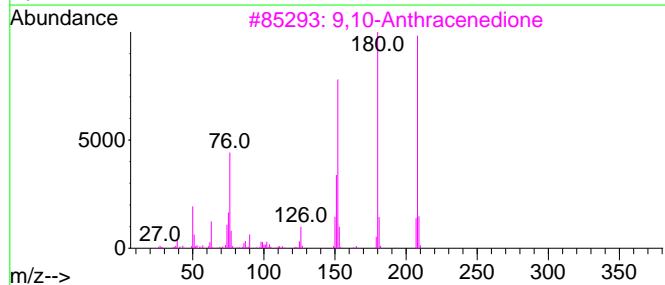
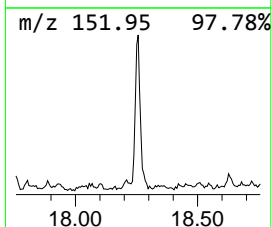
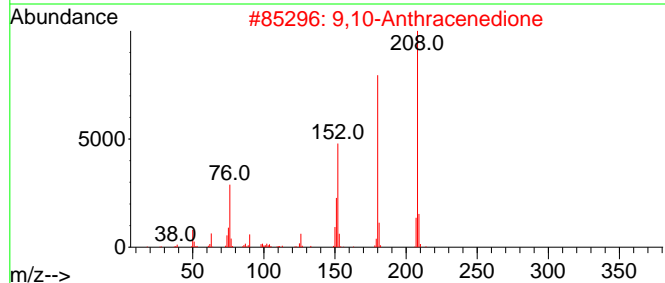
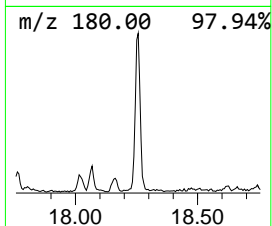
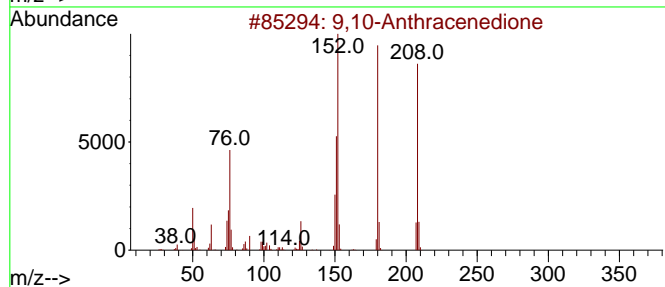
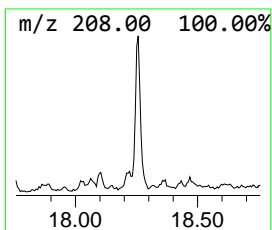
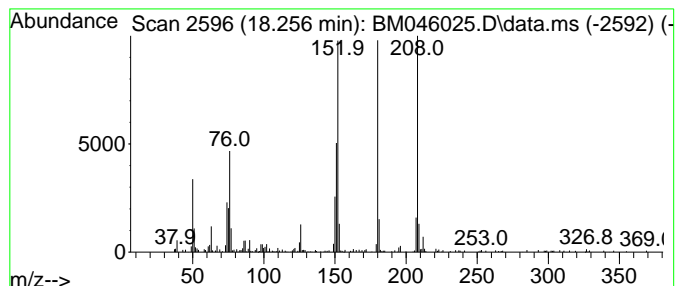
Quant Method : Z:\svoasrv\HPCHEM1\BNA_M\Methods\SFAM-EPA-BM053124.MA.M
 Quant Title : SVOA CALIBRATION

TIC Library : C:\Database\NIST20.L
 TIC Integration Parameters: LSCINT.P

 Peak Number 6 9,10-Anthracenedione Concentration Rank 8

R.T.	EstConc	Area	Relative to ISTD	R.T.
18.256	3.17 ng/ul	263751	Phenanthrene-d10	16.827

Hit#	of	5	Tentative ID	MW	MolForm	CAS#	Qual
1			9,10-Anthracenedione	208	C14H8O2	000084-65-1	97
2			9,10-Anthracenedione	208	C14H8O2	000084-65-1	94
3			9,10-Anthracenedione	208	C14H8O2	000084-65-1	93
4			9,10-Anthracenedione	208	C14H8O2	000084-65-1	91
5			9,10-Phenanthrenedione	208	C14H8O2	000084-11-7	90



Data Path : Z:\svoasrv\HPCHEM1\BNA_M\Data\BM061324\
 Data File : BM046025.D
 Acq On : 13 Jun 2024 15:57
 Operator : MA/JU
 Sample : P2648-01
 Misc :
 ALS Vial : 9 Sample Multiplier: 1

Instrument :
 BNA_M
 ClientSampleId :
 BHBT7

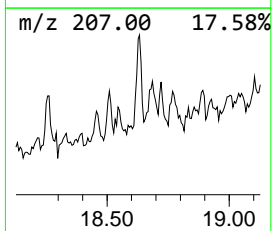
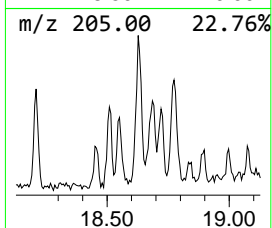
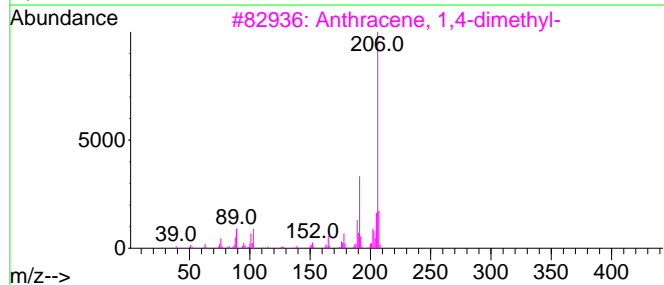
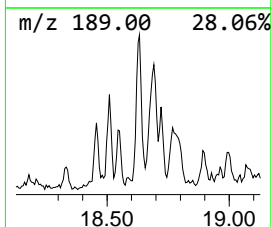
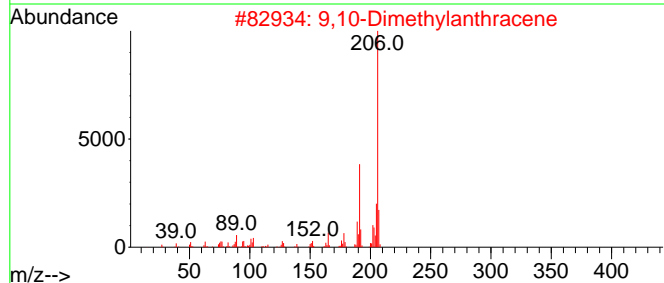
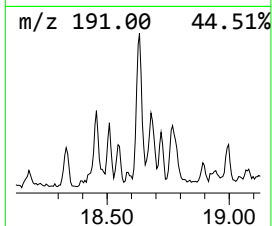
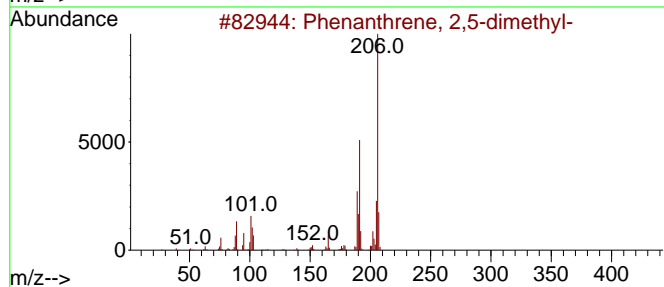
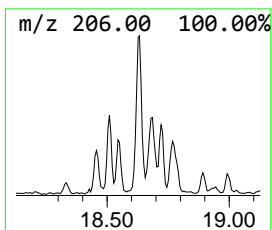
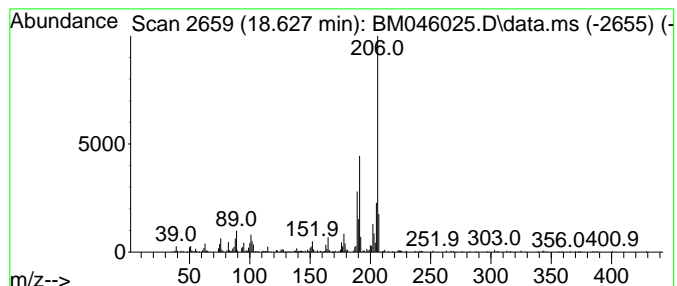
Quant Method : Z:\svoasrv\HPCHEM1\BNA_M\Methods\SFAM-EPA-BM053124.MA.M
 Quant Title : SVOA CALIBRATION

TIC Library : C:\Database\NIST20.L
 TIC Integration Parameters: LSCINT.P

 Peak Number 7 Phenanthrene, 2,5-dimethyl- Concentration Rank 7

R.T.	EstConc	Area	Relative to ISTD	R.T.
18.627	3.18 ng/ul	264693	Phenanthrene-d10	16.827

Hit#	of	5	Tentative ID	MW	MolForm	CAS#	Qual
1			Phenanthrene, 2,5-dimethyl-	206	C16H14	003674-66-6	95
2			9,10-Dimethylanthracene	206	C16H14	000781-43-1	94
3			Anthracene, 1,4-dimethyl-	206	C16H14	000781-92-0	93
4			Phenanthrene, 1,7-dimethyl-	206	C16H14	000483-87-4	93
5			9,10-Dimethylanthracene	206	C16H14	000781-43-1	91



Data Path : Z:\svoasrv\HPCHEM1\BNA_M\Data\BM061324\
 Data File : BM046025.D
 Acq On : 13 Jun 2024 15:57
 Operator : MA/JU
 Sample : P2648-01
 Misc :
 ALS Vial : 9 Sample Multiplier: 1

Instrument :
 BNA_M
 ClientSampleId :
 BHBT7

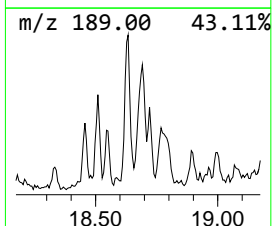
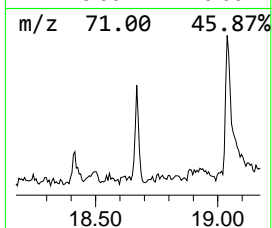
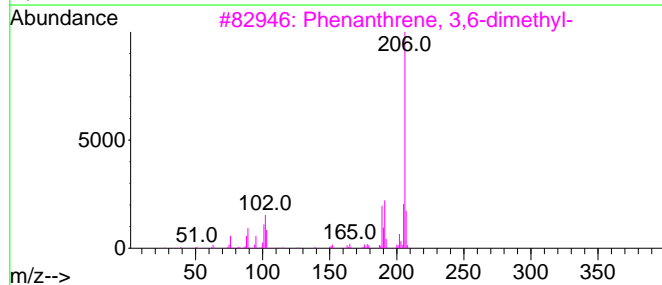
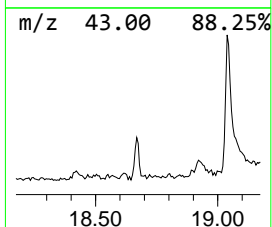
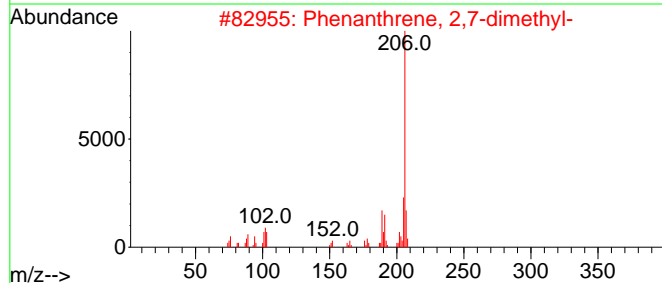
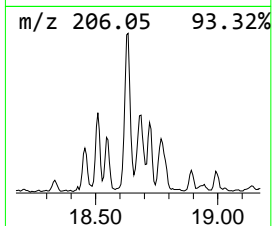
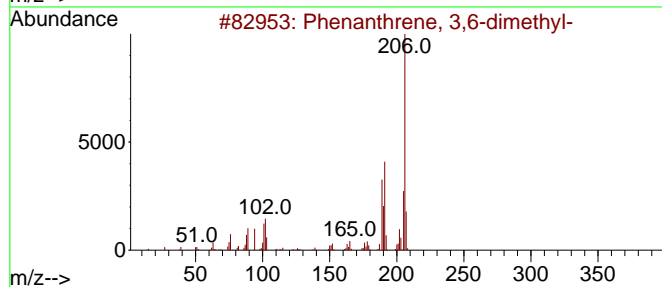
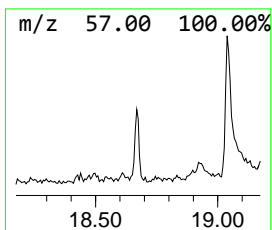
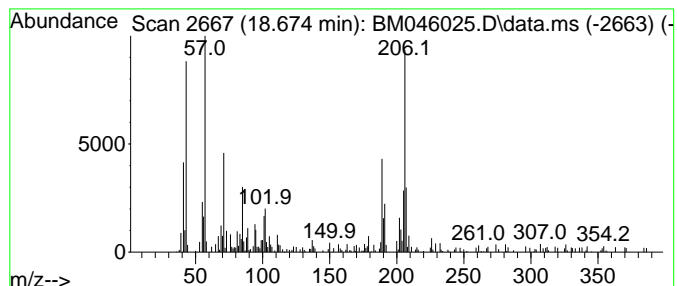
Quant Method : Z:\svoasrv\HPCHEM1\BNA_M\Methods\SFAM-EPA-BM053124.MA.M
 Quant Title : SVOA CALIBRATION

TIC Library : C:\Database\NIST20.L
 TIC Integration Parameters: LSCINT.P

 Peak Number 8 Phenanthrene, 3,6-dimethyl- Concentration Rank 10

R.T.	EstConc	Area	Relative to ISTD	R.T.
18.674	2.78 ng/ul	230641	Phenanthrene-d10	16.827

Hit#	of	5	Tentative ID	MW	MolForm	CAS#	Qual
1			Phenanthrene, 3,6-dimethyl-	206	C16H14	001576-67-6	78
2			Phenanthrene, 2,7-dimethyl-	206	C16H14	001576-69-8	70
3			Phenanthrene, 3,6-dimethyl-	206	C16H14	001576-67-6	60
4			Phenanthrene, 2,7-dimethyl-	206	C16H14	001576-69-8	55
5			di-p-Tolylacetylene	206	C16H14	002789-88-0	55



Data Path : Z:\svoasrv\HPCHEM1\BNA_M\Data\BM061324\
 Data File : BM046025.D
 Acq On : 13 Jun 2024 15:57
 Operator : MA/JU
 Sample : P2648-01
 Misc :
 ALS Vial : 9 Sample Multiplier: 1

Instrument :
 BNA_M
 ClientSampleId :
 BHBT7

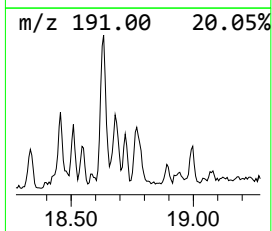
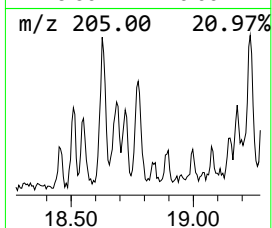
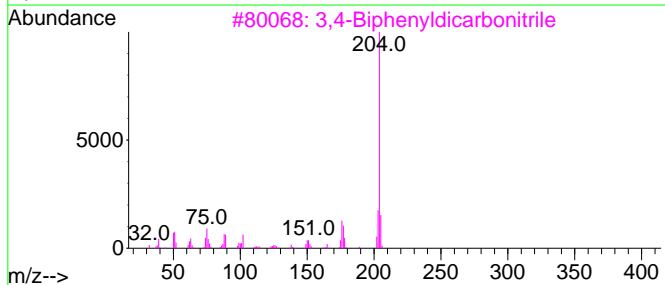
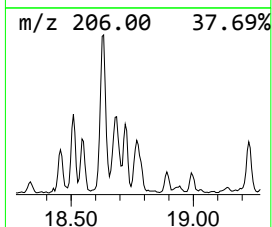
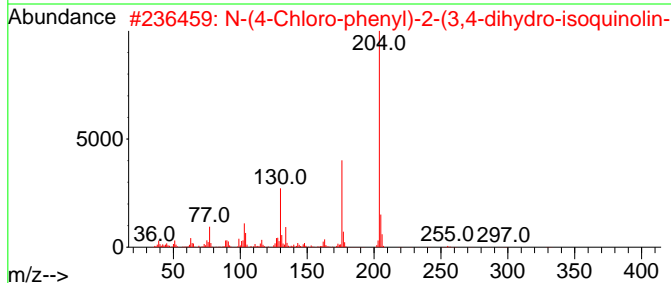
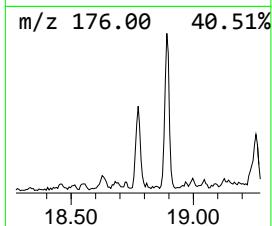
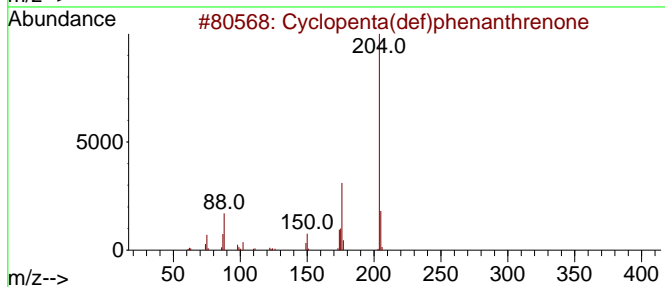
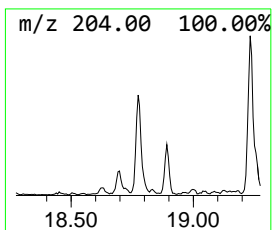
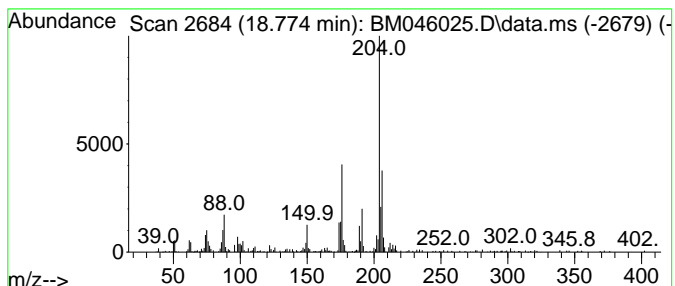
Quant Method : Z:\svoasrv\HPCHEM1\BNA_M\Methods\SFAM-EPA-BM053124.MA.M
 Quant Title : SVOA CALIBRATION

TIC Library : C:\Database\NIST20.L
 TIC Integration Parameters: LSCINT.P

 Peak Number 9 Cyclopenta(def)phenanthrene Concentration Rank 5

R.T.	EstConc	Area	Relative to ISTD	R.T.
18.774	3.49 ng/ul	290078	Phenanthrene-d10	16.827

Hit#	of 5	Tentative ID	MW	MolForm	CAS#	Qual
1		Cyclopenta(def)phenanthrene	204	C15H8O	005737-13-3	93
2		N-(4-Chloro-phenyl)-2-(3,4-dihyd...	330	C17H15ClN2OS	1010296-34-3	50
3		3,4-Biphenyldicarbonitrile	204	C14H8N2	004128-63-6	47
4		[1,1'-Biphenyl]-4-ol, 4'-chloro-	204	C12H9ClO	028034-99-3	43
5		Pyrimidine, 4-chloro-6-(4-methyl...	204	C11H9ClN2	1000380-55-8	43



Data Path : Z:\svoasrv\HPCHEM1\BNA_M\Data\BM061324\
 Data File : BM046025.D
 Acq On : 13 Jun 2024 15:57
 Operator : MA/JU
 Sample : P2648-01
 Misc :
 ALS Vial : 9 Sample Multiplier: 1

Instrument :
 BNA_M
 ClientSampleId :
 BHBT7

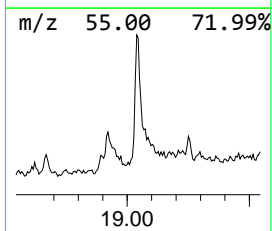
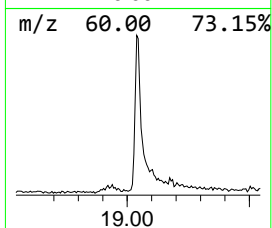
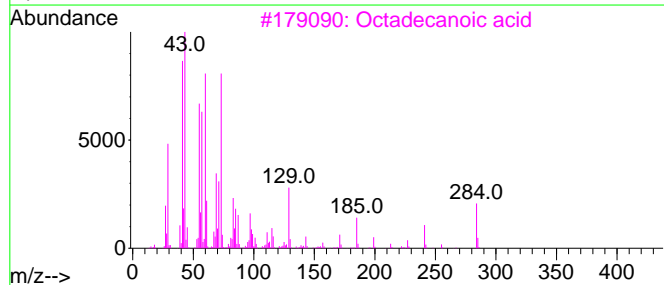
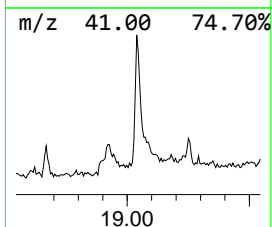
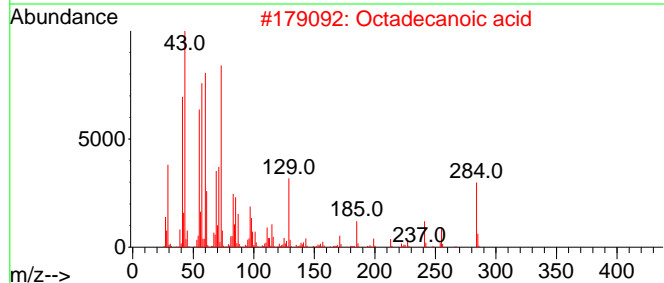
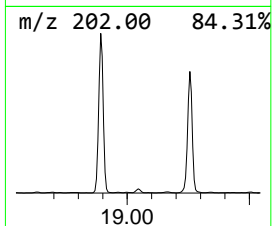
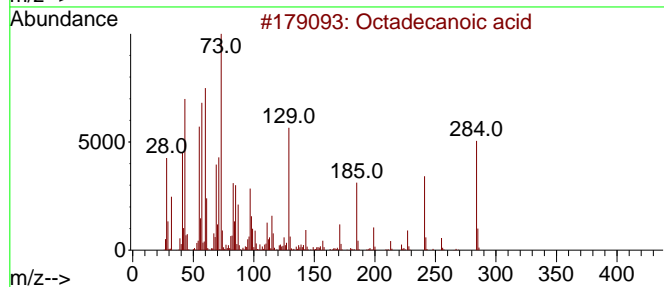
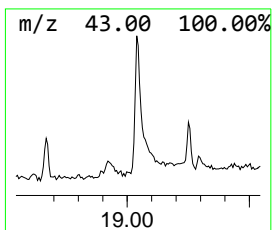
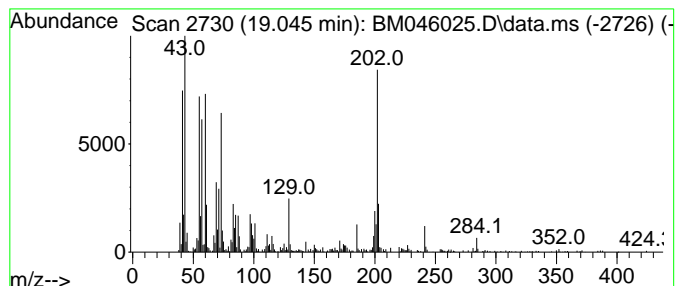
Quant Method : Z:\svoasrv\HPCHEM1\BNA_M\Methods\SFAM-EPA-BM053124.MA.M
 Quant Title : SVOA CALIBRATION

TIC Library : C:\Database\NIST20.L
 TIC Integration Parameters: LSCINT.P

 Peak Number 10 Octadecanoic acid Concentration Rank 6

R.T.	EstConc	Area	Relative to ISTD	R.T.
19.045	3.22 ng/ul	599179	Chrysene-d12	21.044

Hit#	of 5	Tentative ID	MW	MolForm	CAS#	Qual
1		Octadecanoic acid	284	C18H36O2	000057-11-4	93
2		Octadecanoic acid	284	C18H36O2	000057-11-4	52
3		Octadecanoic acid	284	C18H36O2	000057-11-4	50
4		Fluoranthene	202	C16H10	000206-44-0	49
5		Dodecanoic acid	200	C12H24O2	000143-07-7	46



Data Path : Z:\svoasrv\HPCHEM1\BNA_M\Data\BM061324\
 Data File : BM046025.D
 Acq On : 13 Jun 2024 15:57
 Operator : MA/JU
 Sample : P2648-01
 Misc :
 ALS Vial : 9 Sample Multiplier: 1

Instrument :
 BNA_M
 ClientSampleId :
 BHBT7

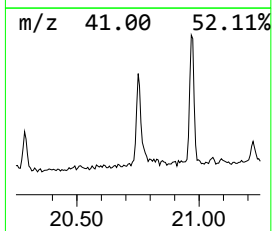
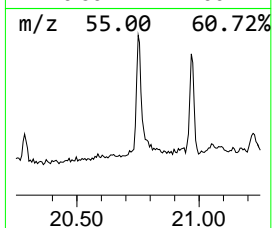
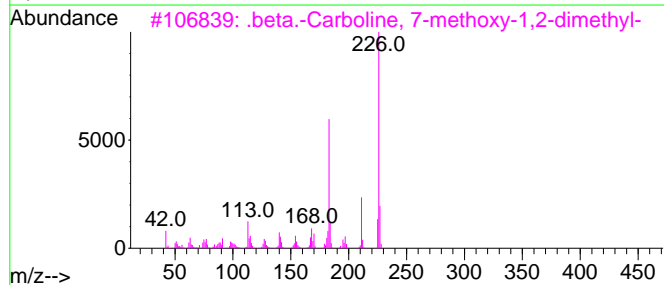
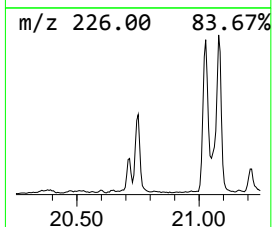
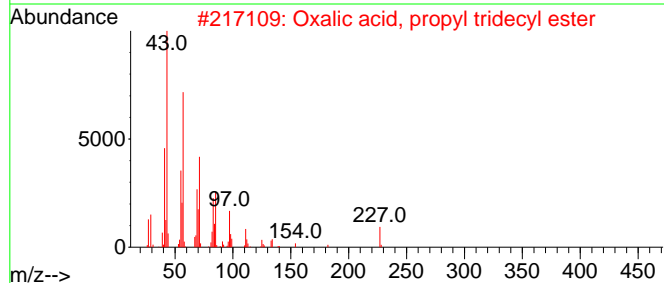
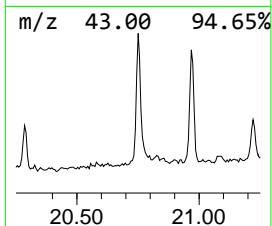
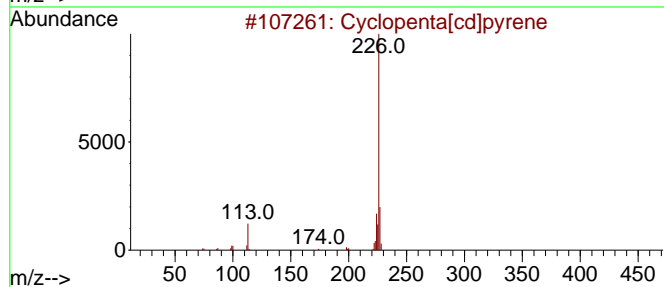
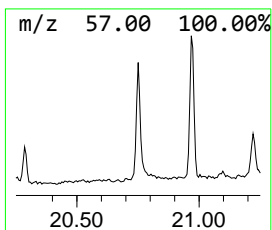
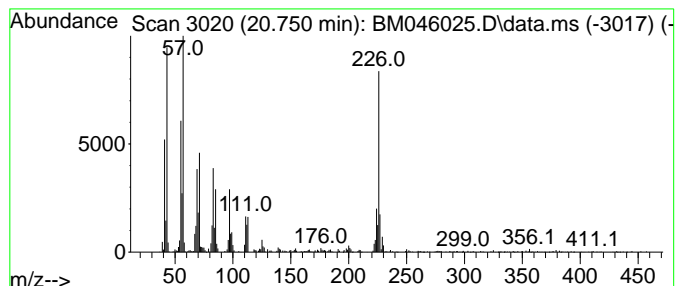
Quant Method : Z:\svoasrv\HPCHEM1\BNA_M\Methods\SFAM-EPA-BM053124.MA.M
 Quant Title : SVOA CALIBRATION

TIC Library : C:\Database\NIST20.L
 TIC Integration Parameters: LSCINT.P

 Peak Number 11 Cyclopenta[cd]pyrene Concentration Rank 4

R.T.	EstConc	Area	Relative to ISTD	R.T.
20.750	4.09 ng/ul	760697	Chrysene-d12	21.044

Hit#	of	5	Tentative ID	MW	MolForm	CAS#	Qual
1			Cyclopenta[cd]pyrene	226	C18H10	027208-37-3	50
2			Oxalic acid, propyl tridecyl ester	314	C18H34O4	1000309-26-6	38
3			.beta.-Carboline, 7-methoxy-1,2-...	226	C14H14N2O	006519-18-2	27
4			p-Anisaldehyde phenylhydrazone	226	C14H14N2O	000622-73-1	27
5			9H-Xanthen-9-one, 3-methoxy-	226	C14H10O3	003722-52-9	27



Data Path : Z:\svoasrv\HPCHEM1\BNA_M\Data\BM061324\
 Data File : BM046025.D
 Acq On : 13 Jun 2024 15:57
 Operator : MA/JU
 Sample : P2648-01
 Misc :
 ALS Vial : 9 Sample Multiplier: 1

Instrument :
 BNA_M
 ClientSampleId :
 BHBT7

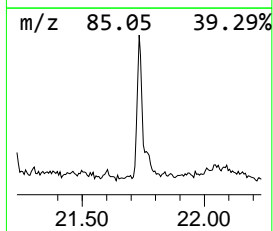
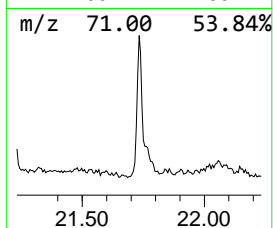
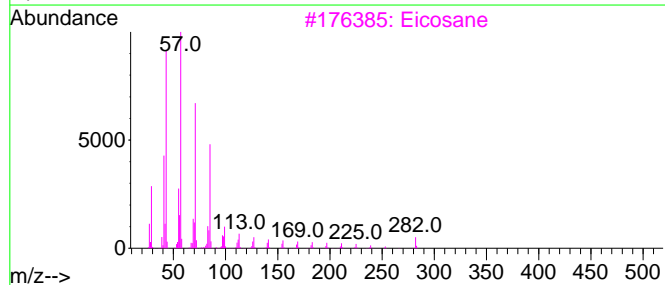
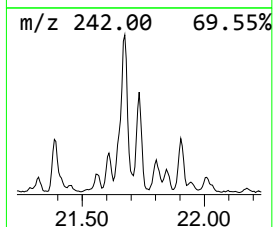
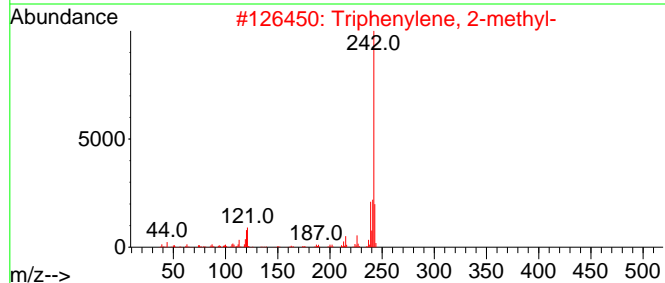
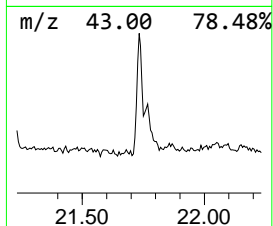
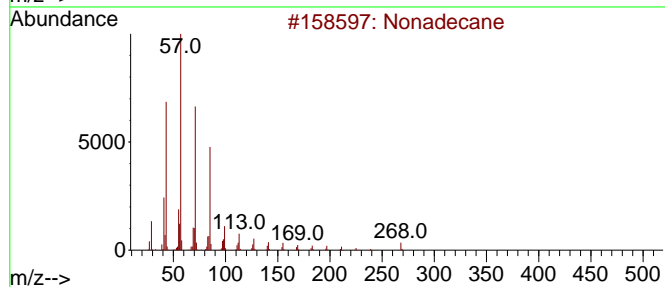
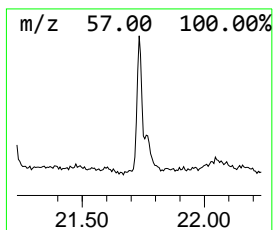
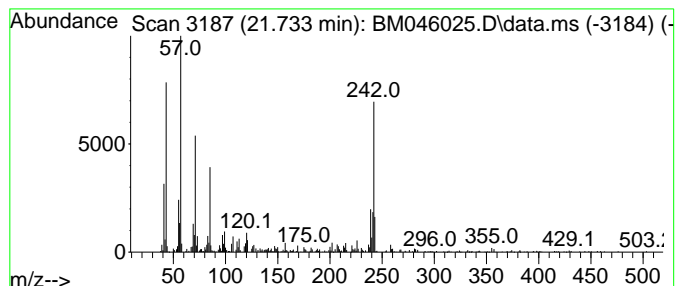
Quant Method : Z:\svoasrv\HPCHEM1\BNA_M\Methods\SFAM-EPA-BM053124.MA.M
 Quant Title : SVOA CALIBRATION

TIC Library : C:\Database\NIST20.L
 TIC Integration Parameters: LSCINT.P

 Peak Number 12 (DEL) Alkane: Straight-Chai... Concentration Rank 12

R.T.	EstConc	Area	Relative to ISTD	R.T.
21.733	2.58 ng/ul	479289	Chrysene-d12	21.044

Hit#	of 5	Tentative ID	MW	MolForm	CAS#	Qual
1		Nonadecane	268	C19H40	000629-92-5	90
2		Triphenylene, 2-methyl-	242	C19H14	001705-84-6	70
3		Eicosane	282	C20H42	000112-95-8	64
4		Hexadecane	226	C16H34	000544-76-3	64
5		Benzo[c]phenanthrene, 5-methyl-	242	C19H14	000652-04-0	55



Data Path : Z:\svoasrv\HPCHEM1\BNA_M\Data\BM061324\
 Data File : BM046025.D
 Acq On : 13 Jun 2024 15:57
 Operator : MA/JU
 Sample : P2648-01
 Misc :
 ALS Vial : 9 Sample Multiplier: 1

Instrument :
 BNA_M
 ClientSampleId :
 BHBT7

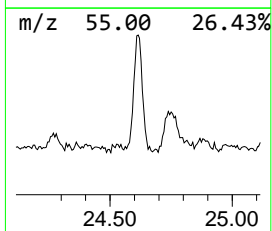
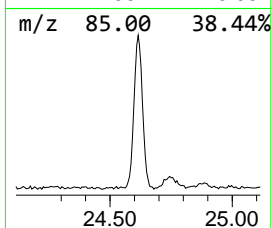
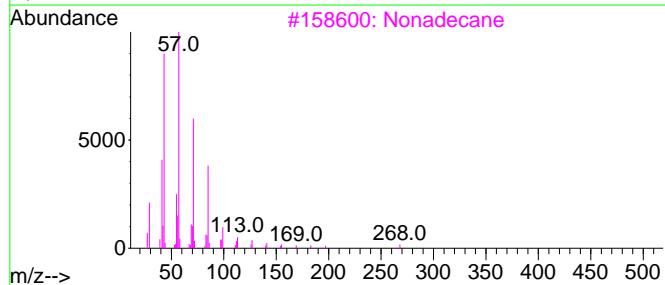
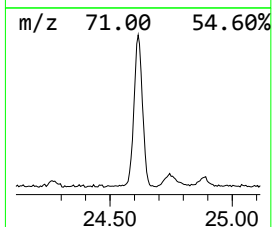
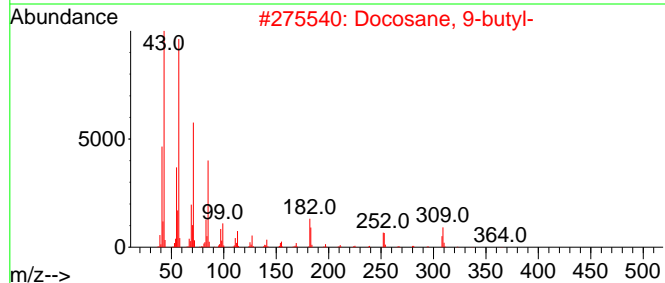
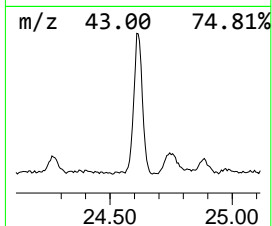
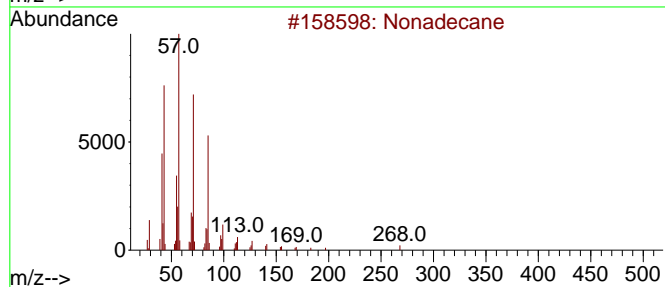
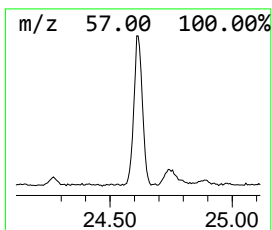
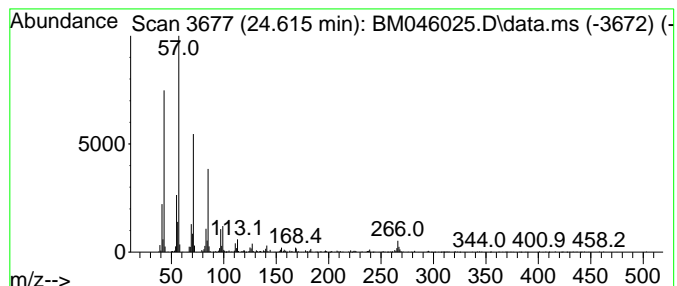
Quant Method : Z:\svoasrv\HPCHEM1\BNA_M\Methods\SFAM-EPA-BM053124.MA.M
 Quant Title : SVOA CALIBRATION

TIC Library : C:\Database\NIST20.L
 TIC Integration Parameters: LSCINT.P

 Peak Number 13 (DEL) Alkane: Straight-Chai... Concentration Rank 1

R.T.	EstConc	Area	Relative to ISTD	R.T.
24.615	16.04 ng/ul	1477400	Perylene-d12	23.750

Hit#	of 5	Tentative ID	MW	MolForm	CAS#	Qual
1		Nonadecane	268	C19H40	000629-92-5	91
2		Docosane, 9-butyl-	366	C26H54	055282-14-9	91
3		Nonadecane	268	C19H40	000629-92-5	89
4		Octadecane, 5,14-dibutyl-	366	C26H54	055282-13-8	89
5		Eicosane, 3-methyl-	296	C21H44	006418-46-8	89



Data Path : Z:\svoasrv\HPCHEM1\BNA_M\Data\BM061324\
 Data File : BM046025.D
 Acq On : 13 Jun 2024 15:57
 Operator : MA/JU
 Sample : P2648-01
 Misc :
 ALS Vial : 9 Sample Multiplier: 1

Instrument :
 BNA_M
 ClientSampleId :
 BHBT7

Quant Method : Z:\svoasrv\HPCHEM1\BNA_M\Methods\SFAM-EPA-BM053124.MA.M
 Quant Title : SVOA CALIBRATION

TIC Library : C:\Database\NIST0.L
 TIC Integration Parameters: LSCINT.P

TIC Top Hit name	RT	EstConc	Units	Response	--Internal Standard--			
					#	RT	Resp	Conc
unknown-01	4.628	2.4	ng/u1	108450	1	7.434	888430	20.0
Phenanthrene, 2...	17.698	3.1	ng/u1	258057	4	16.827	1662220	20.0
n-Hexadecanoic ...	17.756	15.9	ng/u1	1323200	4	16.827	1662220	20.0
Benzaldehyde, 3...	17.892	6.5	ng/u1	541872	4	16.827	1662220	20.0
Anthracene, 9-m...	17.933	2.6	ng/u1	219114	4	16.827	1662220	20.0
9,10-Anthracene...	18.256	3.2	ng/u1	263751	4	16.827	1662220	20.0
Phenanthrene, 2...	18.627	3.2	ng/u1	264693	4	16.827	1662220	20.0
Phenanthrene, 3...	18.674	2.8	ng/u1	230641	4	16.827	1662220	20.0
Cyclopenta(def)...	18.774	3.5	ng/u1	290078	4	16.827	1662220	20.0
Octadecanoic acid	19.045	3.2	ng/u1	599179	5	21.044	3721210	20.0
Cyclopenta[cd]p...	20.750	4.1	ng/u1	760697	5	21.044	3721210	20.0
(DEL) Alkane: S...	21.733	2.6	ng/u1	479289	5	21.044	3721210	20.0
(DEL) Alkane: S...	24.615	16.0	ng/u1	1477400	6	23.750	1841990	20.0