

Data Path : Z:\svoasrv\HPCHEM1\BNA_M\Data\BM061324\
 Data File : BM046029.D
 Acq On : 13 Jun 2024 18:36
 Operator : MA/JU
 Sample : P2648-18DL 5X
 Misc :
 ALS Vial : 13 Sample Multiplier: 1

Instrument :
 BNA_M
 ClientSampleId :
 BHC50DL

Integration Parameters: LSCINT.P

Integrator: RTE
 Smoothing : OFF
 Sampling : 1
 Start Thrs: 0.2
 Stop Thrs : 0

Filtering: 5
 Min Area: 0.1 % of largest Peak
 Max Peaks: 100
 Peak Location: TOP

If leading or trailing edge < 100 prefer < Baseline drop else tangent >
 Peak separation: 5

Method : Z:\svoasrv\HPCHEM1\BNA_M\Methods\SFAM-EPA-BM053124.MA.M
 Title : SVOA CALIBRATION

Signal : TIC: BM046029.D\data.ms

peak #	R.T. min	first scan	max scan	last scan	PK TY	peak height	corr. area	corr. % max.	% of total
1	3.534	86	93	99	rBV4	28944	55080	1.42%	0.139%
2	4.640	274	281	288	rBV3	14006	36414	0.94%	0.092%
3	6.704	624	632	645	rBV2	72192	182487	4.71%	0.460%
4	6.816	645	651	665	rVB	51945	111356	2.88%	0.281%
5	7.004	677	683	692	rBV	89853	163659	4.23%	0.413%
6	7.434	749	756	765	rBV	514551	869073	22.44%	2.191%
7	7.981	843	849	857	rVV2	16708	35892	0.93%	0.090%
8	8.222	884	890	901	rBV2	77314	171149	4.42%	0.431%
9	8.616	951	957	973	rBV	83710	170618	4.41%	0.430%
10	9.322	1071	1077	1089	rBV2	72708	146238	3.78%	0.369%
11	9.886	1165	1173	1184	rBV3	65705	182028	4.70%	0.459%
12	10.204	1219	1227	1246	rBV	661528	1256886	32.45%	3.169%
13	10.422	1258	1264	1272	rBV3	26035	64775	1.67%	0.163%
14	12.110	1543	1551	1556	rBV4	15750	31942	0.82%	0.081%
15	13.404	1764	1771	1775	rBV5	25992	48803	1.26%	0.123%
16	13.539	1789	1794	1807	rBV	175279	308368	7.96%	0.777%
17	13.774	1828	1834	1837	rBV	213301	376606	9.72%	0.949%
18	13.804	1837	1839	1847	rVB	164863	224819	5.81%	0.567%
19	14.080	1879	1886	1893	rVV	966139	1476415	38.12%	3.722%
20	14.145	1893	1897	1907	rVB2	41442	77219	1.99%	0.195%
21	14.345	1920	1931	1937	rBV	181461	463565	11.97%	1.169%
22	14.410	1938	1942	1949	rVV4	43074	108156	2.79%	0.273%
23	14.492	1952	1956	1962	rVV2	37471	71421	1.84%	0.180%
24	14.574	1965	1970	1975	rVV3	26160	46810	1.21%	0.118%
25	14.710	1987	1993	1996	rBV5	21755	42941	1.11%	0.108%
26	14.962	2032	2036	2041	rVB2	30432	43177	1.11%	0.109%
27	15.086	2051	2057	2062	rVV	268796	401298	10.36%	1.012%
28	15.139	2062	2066	2071	rVB2	57616	89028	2.30%	0.224%
29	15.239	2078	2083	2090	rBV5	39212	80509	2.08%	0.203%
30	15.439	2111	2117	2122	rBV2	27712	51421	1.33%	0.130%
31	15.586	2139	2142	2148	rVB2	24345	44379	1.15%	0.112%
32	15.821	2175	2182	2192	rBV4	56855	112721	2.91%	0.284%
33	16.139	2229	2236	2242	rBV4	32036	77725	2.01%	0.196%
34	16.192	2242	2245	2250	rVB2	23400	29765	0.77%	0.075%
35	16.286	2258	2261	2266	rVB6	22570	33922	0.88%	0.086%
36	16.374	2272	2276	2279	rBV4	24050	37844	0.98%	0.095%

Data Path : Z:\svoasrv\HPCHEM1\BNA_M\Data\BM061324\
 Data File : BM046029.D
 Acq On : 13 Jun 2024 18:36
 Operator : MA/JU
 Sample : P2648-18DL 5X
 Misc :
 ALS Vial : 13 Sample Multiplier: 1

Instrument :
 BNA_M
 ClientSampleId :
 BHC50DL

Integration Parameters: LSCINT.P

Integrator: RTE
 Smoothing : OFF Filtering: 5
 Sampling : 1 Min Area: 0.1 % of largest Peak
 Start Thrs: 0.2 Max Peaks: 100
 Stop Thrs : 0 Peak Location: TOP

If leading or trailing edge < 100 prefer < Baseline drop else tangent >
 Peak separation: 5

Method : Z:\svoasrv\HPCHEM1\BNA_M\Methods\SFAM-EPA-BM053124.MA.M
 Title : SVOA CALIBRATION

37	16.409	2279	2282	2286	rVB4	20987	29692	0.77%	0.075%
38	16.492	2292	2296	2304	rVB	63547	105185	2.72%	0.265%
39	16.562	2304	2308	2313	rBV4	25291	46790	1.21%	0.118%
40	16.645	2318	2322	2333	rVB	63554	116532	3.01%	0.294%
41	16.768	2337	2343	2347	rBV7	18683	38847	1.00%	0.098%
42	16.827	2347	2353	2357	rBV	1229761	1705386	44.03%	4.299%
43	16.868	2357	2360	2365	rVV	1207999	1588042	41.00%	4.004%
44	16.927	2365	2370	2373	rVV	295399	439188	11.34%	1.107%
45	16.962	2373	2376	2382	rVB	251982	344199	8.89%	0.868%
46	17.033	2382	2388	2393	rBV4	39062	73379	1.89%	0.185%
47	17.251	2417	2425	2436	rBV2	90368	230774	5.96%	0.582%
48	17.356	2437	2443	2447	rVV2	42076	90554	2.34%	0.228%
49	17.409	2449	2452	2461	rVB3	46711	97407	2.52%	0.246%
50	17.515	2468	2470	2473	rBV4	22705	29862	0.77%	0.075%
51	17.551	2473	2476	2480	rVB2	32604	49331	1.27%	0.124%
52	17.633	2485	2490	2493	rBV4	28227	48427	1.25%	0.122%
53	17.703	2497	2502	2506	rBV	227537	315825	8.15%	0.796%
54	17.751	2506	2510	2519	rVV2	431528	667608	17.24%	1.683%
55	17.827	2520	2523	2528	rVV2	77875	128134	3.31%	0.323%
56	17.892	2529	2534	2538	rVV2	329950	542383	14.00%	1.367%
57	17.933	2538	2541	2549	rVB	181610	243909	6.30%	0.615%
58	18.027	2553	2557	2559	rBV4	39491	52362	1.35%	0.132%
59	18.062	2560	2563	2567	rVV5	29088	46562	1.20%	0.117%
60	18.103	2567	2570	2574	rVB3	32678	40419	1.04%	0.102%
61	18.209	2584	2588	2592	rBV	134391	172289	4.45%	0.434%
62	18.256	2592	2596	2601	rVB	191376	269304	6.95%	0.679%
63	18.427	2622	2625	2626	rBV3	24176	26001	0.67%	0.066%
64	18.456	2627	2630	2635	rVV	66416	101012	2.61%	0.255%
65	18.509	2635	2639	2642	rVV2	90431	119210	3.08%	0.301%
66	18.545	2642	2645	2650	rVB	63653	85815	2.22%	0.216%
67	18.627	2654	2659	2663	rBV	178995	274644	7.09%	0.692%
68	18.686	2664	2669	2673	rVV7	87617	214085	5.53%	0.540%
69	18.721	2673	2675	2679	rVB	67053	65492	1.69%	0.165%
70	18.774	2679	2684	2690	rBV3	156750	278229	7.18%	0.701%
71	18.892	2698	2704	2711	rBV	2593787	3423510	88.40%	8.631%
72	18.962	2714	2716	2719	rVV	44739	41999	1.08%	0.106%
73	18.998	2719	2722	2726	rVB2	61873	75347	1.95%	0.190%
74	19.045	2726	2730	2735	rBV	171095	251877	6.50%	0.635%
75	19.133	2743	2745	2750	rVB	46071	57842	1.49%	0.146%
76	19.227	2756	2761	2763	rBV2	653352	898695	23.21%	2.266%

Data Path : Z:\svoasrv\HPCHEM1\BNA_M\Data\BM061324\
 Data File : BM046029.D
 Acq On : 13 Jun 2024 18:36
 Operator : MA/JU
 Sample : P2648-18DL 5X
 Misc :
 ALS Vial : 13 Sample Multiplier: 1

Instrument :
 BNA_M
 ClientSampleId :
 BHC50DL

Integration Parameters: LSCINT.P

Integrator: RTE
 Smoothing : OFF Filtering: 5
 Sampling : 1 Min Area: 0.1 % of largest Peak
 Start Thrs: 0.2 Max Peaks: 100
 Stop Thrs : 0 Peak Location: TOP

If leading or trailing edge < 100 prefer < Baseline drop else tangent >
 Peak separation: 5

Method : Z:\svoasrv\HPCHEM1\BNA_M\Methods\SFAM-EPA-BM053124.MA.M
 Title : SVOA CALIBRATION

77	19.256	2763	2766	2775	rVV	1994231	2534963	65.46%	6.391%
78	19.339	2775	2780	2785	rVB2	117084	196789	5.08%	0.496%
79	19.439	2794	2797	2803	rBV	97904	138565	3.58%	0.349%
80	19.503	2805	2808	2814	rVB3	93965	141955	3.67%	0.358%
81	19.586	2816	2822	2831	rBV6	174808	478331	12.35%	1.206%
82	19.727	2841	2846	2848	rBV3	163838	279115	7.21%	0.704%
83	19.756	2848	2851	2855	rVB2	308754	422459	10.91%	1.065%
84	19.862	2865	2869	2872	rBV	203999	248792	6.42%	0.627%
85	19.915	2874	2878	2883	rVB2	234733	356685	9.21%	0.899%
86	20.056	2899	2902	2906	rBV	134958	158413	4.09%	0.399%
87	20.103	2907	2910	2915	rVB	136104	183184	4.73%	0.462%
88	20.509	2976	2979	2986	rVB	255904	336693	8.69%	0.849%
89	20.674	3003	3007	3010	rBV2	209223	282155	7.29%	0.711%
90	20.709	3011	3013	3017	rVV	189523	231282	5.97%	0.583%
91	20.750	3017	3020	3026	rVV3	250788	464297	11.99%	1.171%
92	20.809	3027	3030	3036	rVB	264572	346183	8.94%	0.873%
93	20.974	3055	3058	3061	rBV	153390	182688	4.72%	0.461%
94	21.039	3062	3069	3073	rVV3	1708896	3872824	100.00%	9.764%
95	21.080	3073	3076	3087	rVB	1236277	1728520	44.63%	4.358%
96	21.733	3185	3187	3197	rVB3	168240	299321	7.73%	0.755%
97	22.903	3380	3386	3392	rBV	912723	2355272	60.82%	5.938%
98	23.497	3484	3487	3493	rVB	198011	344003	8.88%	0.867%
99	23.621	3503	3508	3520	rVB	523814	1111135	28.69%	2.801%
100	23.750	3523	3530	3537	rVB	797001	1820938	47.02%	4.591%

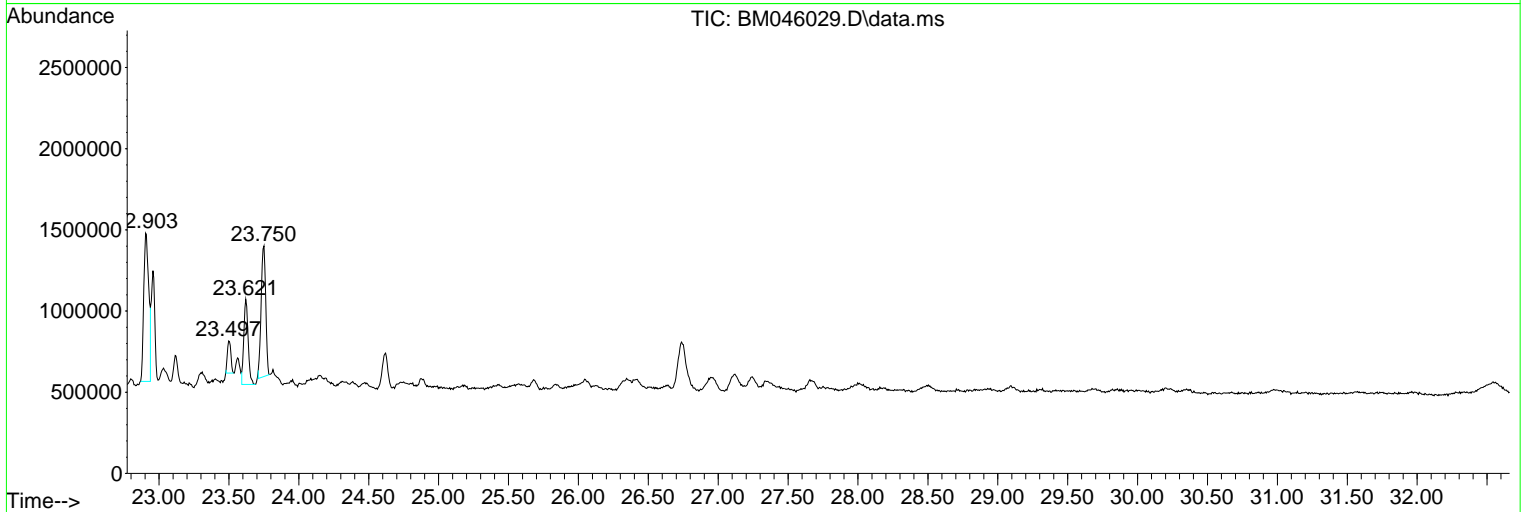
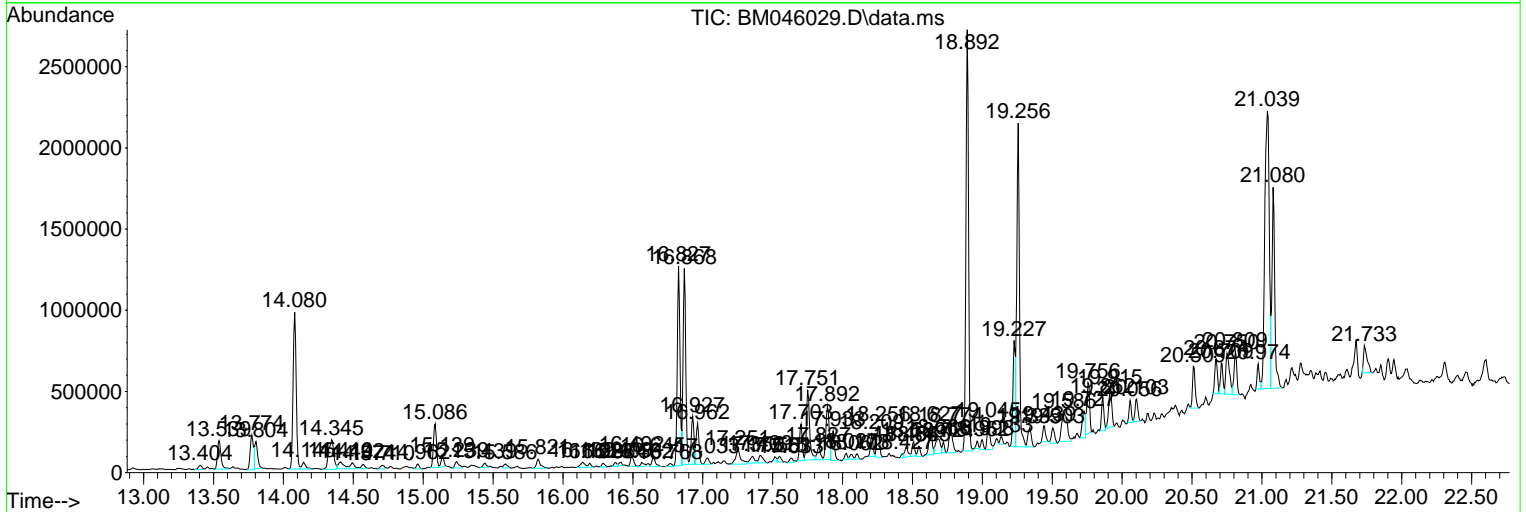
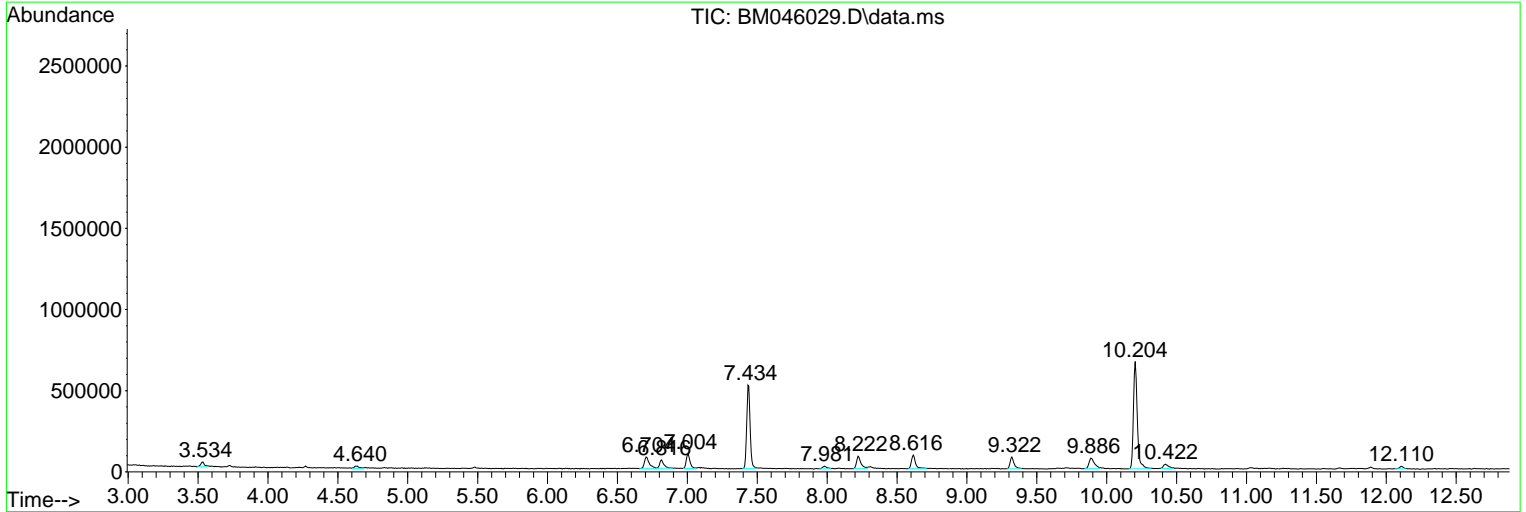
Sum of corrected areas: 39665219

Data Path : Z:\svoasrv\HPCHEM1\BNA_M\Data\BM061324\
 Data File : BM046029.D
 Acq On : 13 Jun 2024 18:36
 Operator : MA/JU
 Sample : P2648-18DL 5X
 Misc :
 ALS Vial : 13 Sample Multiplier: 1

Instrument :
 BNA_M
ClientSampleId :
 BHC50DL

Quant Method : Z:\svoasrv\HPCHEM1\BNA_M\Methods\SFAM-EPA-BM053124.MA.M
 Quant Title : SVOA CALIBRATION

TIC Library : C:\Database\NIST20.L
 TIC Integration Parameters: LSCINT.P



Data Path : Z:\svoasrv\HPCHEM1\BNA_M\Data\BM061324\
 Data File : BM046029.D
 Acq On : 13 Jun 2024 18:36
 Operator : MA/JU
 Sample : P2648-18DL 5X
 Misc :
 ALS Vial : 13 Sample Multiplier: 1

Instrument :
 BNA_M
 ClientSampleId :
 BHC50DL

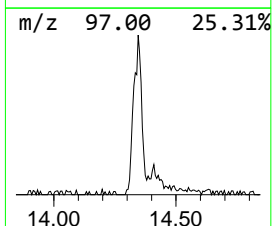
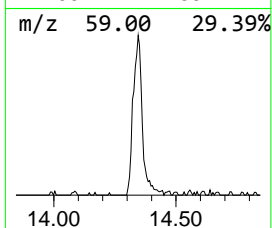
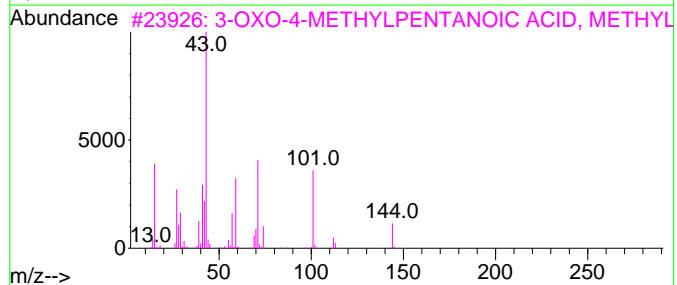
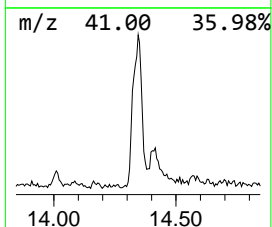
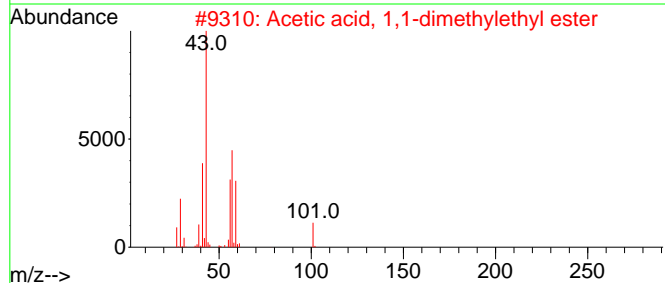
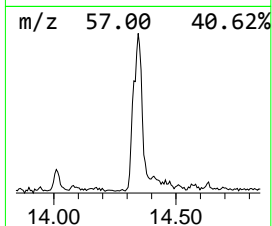
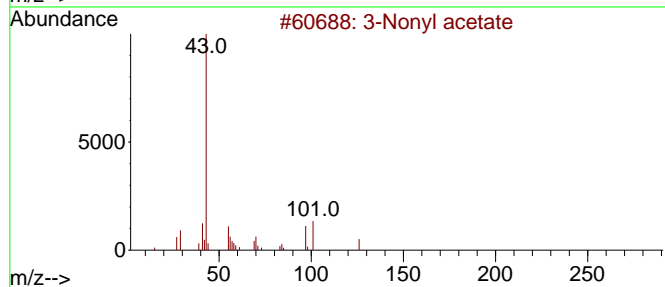
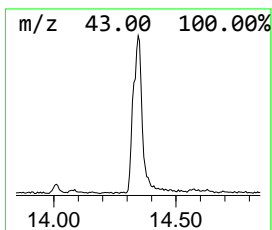
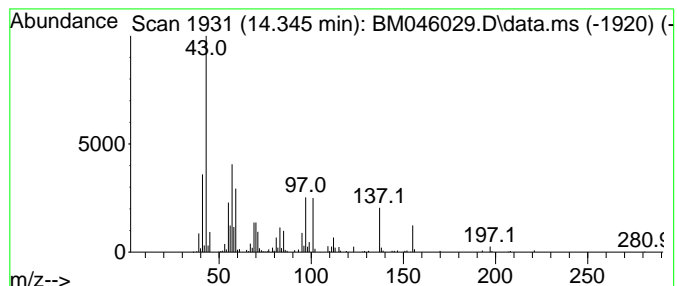
Quant Method : Z:\svoasrv\HPCHEM1\BNA_M\Methods\SFAM-EPA-BM053124.MA.M
 Quant Title : SVOA CALIBRATION

TIC Library : C:\Database\NIST20.L
 TIC Integration Parameters: LSCINT.P

 Peak Number 1 unknown-01 Concentration Rank 3

R.T.	EstConc	Area	Relative to ISTD	R.T.
14.345	6.28 ng/ul	463565	Acenaphthene-d10	14.080

Hit#	of 5	Tentative ID	MW	MolForm	CAS#	Qual
1		3-Nonyl acetate	186	C11H22O2	1010429-16-2	27
2		Acetic acid, 1,1-dimethylethyl e...	116	C6H12O2	000540-88-5	22
3		3-OXO-4-METHYLPENTANOIC ACID, ME...	144	C7H12O3	042558-54-3	12
4		3-Acetoxytridecane	242	C15H30O2	1010245-61-3	12
5		1,3-Dioxane, 4,4-dimethyl-	116	C6H12O2	000766-15-4	12



Data Path : Z:\svoasrv\HPCHEM1\BNA_M\Data\BM061324\
 Data File : BM046029.D
 Acq On : 13 Jun 2024 18:36
 Operator : MA/JU
 Sample : P2648-18DL 5X
 Misc :
 ALS Vial : 13 Sample Multiplier: 1

Instrument :
 BNA_M
 ClientSampleId :
 BHC50DL

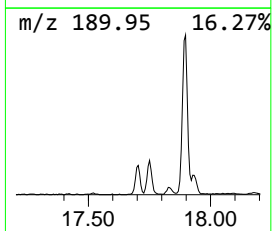
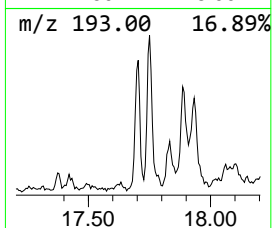
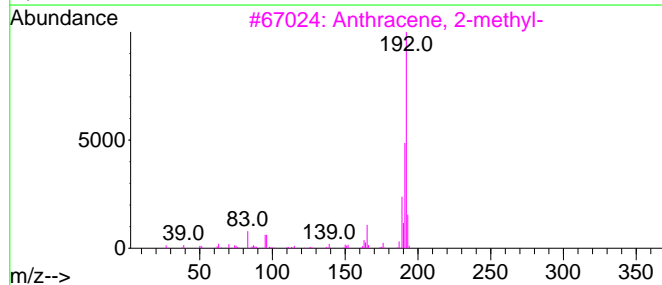
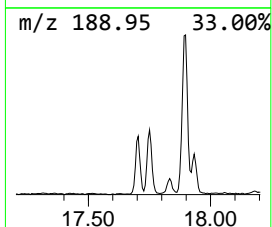
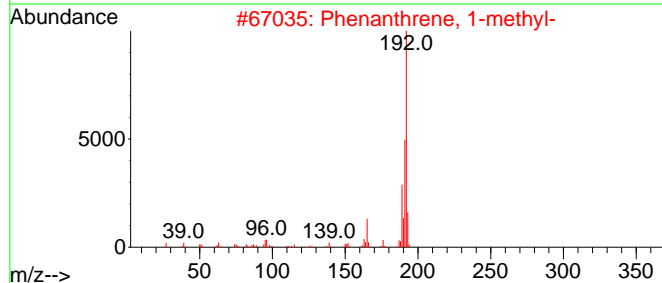
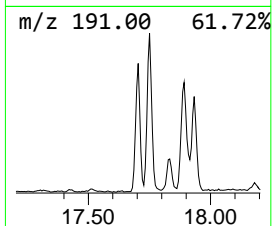
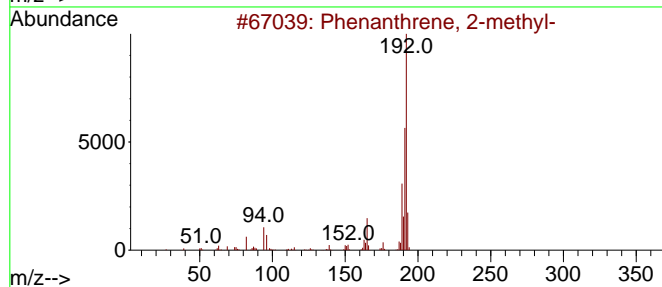
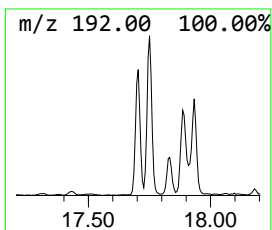
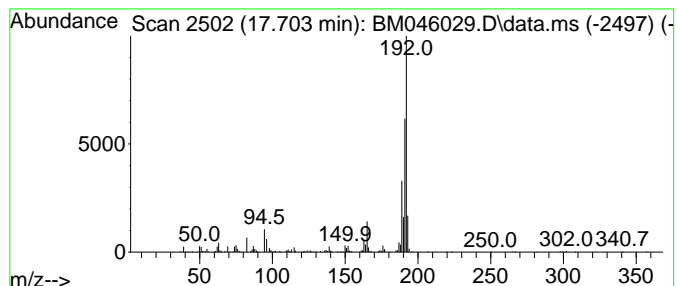
Quant Method : Z:\svoasrv\HPCHEM1\BNA_M\Methods\SFAM-EPA-BM053124.MA.M
 Quant Title : SVOA CALIBRATION

TIC Library : C:\Database\NIST20.L
 TIC Integration Parameters: LSCINT.P

 Peak Number 2 Phenanthrene, 2-methyl- Concentration Rank 5

R.T.	EstConc	Area	Relative to ISTD	R.T.
17.703	3.70 ng/ul	315825	Phenanthrene-d10	16.827

Hit#	of 5	Tentative ID	MW	MolForm	CAS#	Qual
1		Phenanthrene, 2-methyl-	192	C15H12	002531-84-2	98
2		Phenanthrene, 1-methyl-	192	C15H12	000832-69-9	97
3		Anthracene, 2-methyl-	192	C15H12	000613-12-7	96
4		Phenanthrene, 2-methyl-	192	C15H12	002531-84-2	96
5		1H-Cyclopropa[1]phenanthrene,1a,...	192	C15H12	000949-41-7	95



Data Path : Z:\svoasrv\HPCHEM1\BNA_M\Data\BM061324\
 Data File : BM046029.D
 Acq On : 13 Jun 2024 18:36
 Operator : MA/JU
 Sample : P2648-18DL 5X
 Misc :
 ALS Vial : 13 Sample Multiplier: 1

Instrument :
 BNA_M
 ClientSampleId :
 BHC50DL

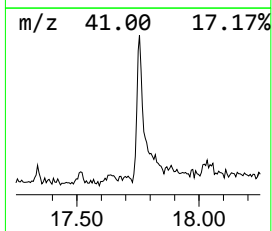
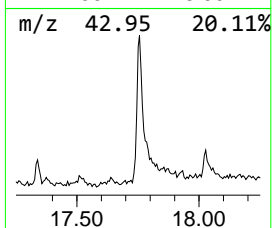
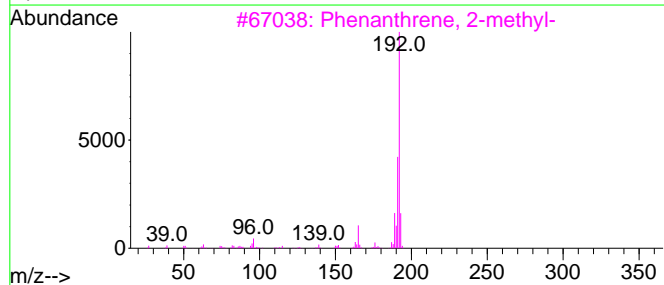
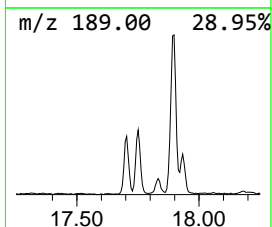
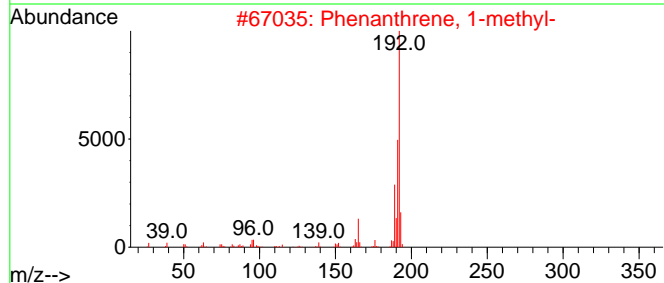
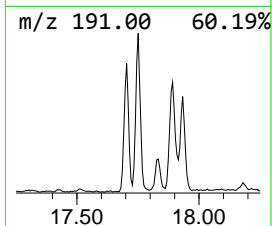
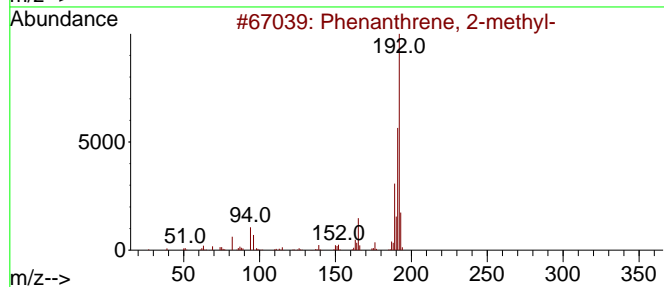
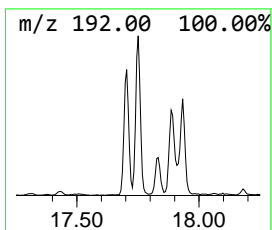
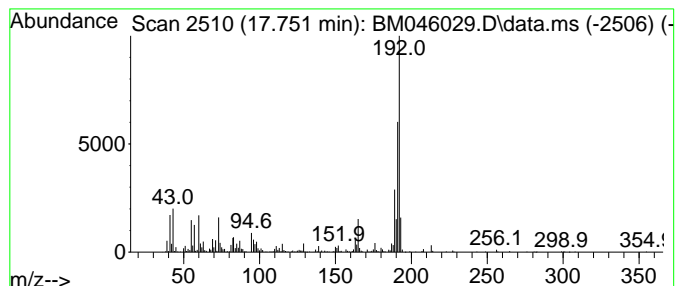
Quant Method : Z:\svoasrv\HPCHEM1\BNA_M\Methods\SFAM-EPA-BM053124.MA.M
 Quant Title : SVOA CALIBRATION

TIC Library : C:\Database\NIST20.L
 TIC Integration Parameters: LSCINT.P

 Peak Number 3 Phenanthrene, 1-methyl- Concentration Rank 1

R.T.	EstConc	Area	Relative to ISTD	R.T.
17.750	7.83 ng/ul	667608	Phenanthrene-d10	16.827

Hit#	of	5	Tentative ID	MW	MolForm	CAS#	Qual
1			Phenanthrene, 2-methyl-	192	C15H12	002531-84-2	98
2			Phenanthrene, 1-methyl-	192	C15H12	000832-69-9	97
3			Phenanthrene, 2-methyl-	192	C15H12	002531-84-2	96
4			Anthracene, 2-methyl-	192	C15H12	000613-12-7	96
5			Anthracene, 9-methyl-	192	C15H12	000779-02-2	95



Data Path : Z:\svoasrv\HPCHEM1\BNA_M\Data\BM061324\
 Data File : BM046029.D
 Acq On : 13 Jun 2024 18:36
 Operator : MA/JU
 Sample : P2648-18DL 5X
 Misc :
 ALS Vial : 13 Sample Multiplier: 1

Instrument :
 BNA_M
 ClientSampleId :
 BHC50DL

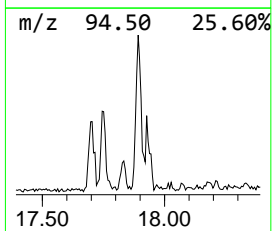
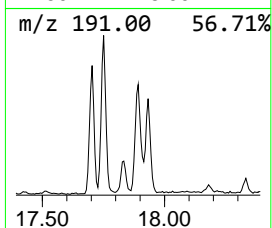
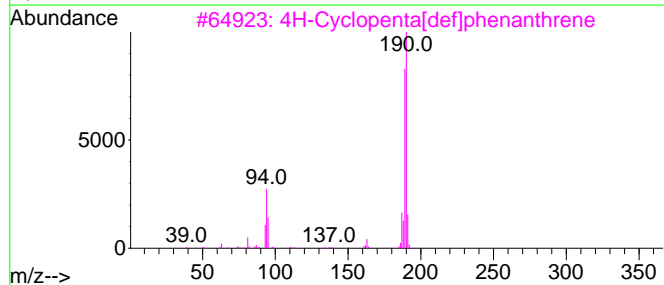
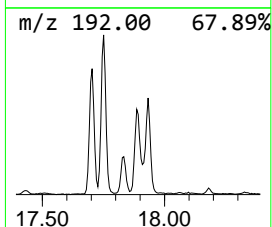
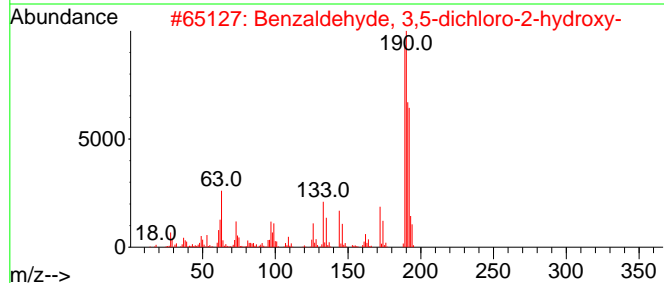
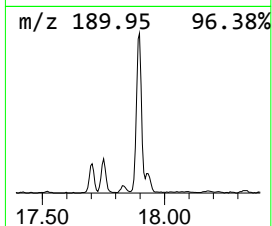
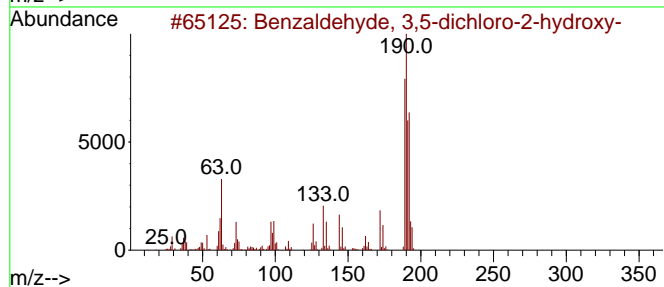
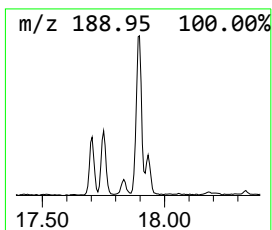
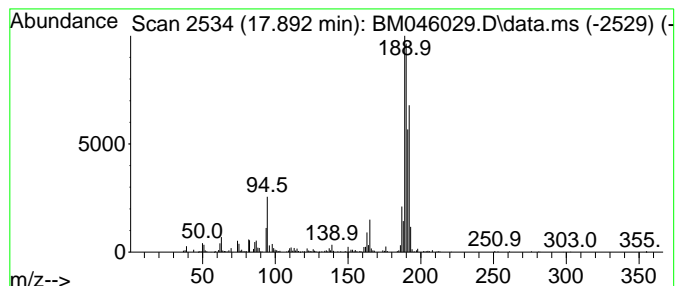
Quant Method : Z:\svoasrv\HPCHEM1\BNA_M\Methods\SFAM-EPA-BM053124.MA.M
 Quant Title : SVOA CALIBRATION

TIC Library : C:\Database\NIST20.L
 TIC Integration Parameters: LSCINT.P

 Peak Number 4 Benzaldehyde, 3,5-dichloro-... Concentration Rank 2

R.T.	EstConc	Area	Relative to ISTD	R.T.
17.892	6.36 ng/ul	542383	Phenanthrene-d10	16.827

Hit#	of	5	Tentative ID	MW	MolForm	CAS#	Qual
1			Benzaldehyde, 3,5-dichloro-2-hyd...	190	C7H4Cl2O2	000090-60-8	64
2			Benzaldehyde, 3,5-dichloro-2-hyd...	190	C7H4Cl2O2	000090-60-8	64
3			4H-Cyclopenta[def]phenanthrene	190	C15H10	000203-64-5	62
4			4H-Cyclopenta[def]phenanthrene	190	C15H10	000203-64-5	60
5			6H-Cyclobuta[jk]phenanthrene	190	C15H10	083469-43-6	58



Data Path : Z:\svoasrv\HPCHEM1\BNA_M\Data\BM061324\
 Data File : BM046029.D
 Acq On : 13 Jun 2024 18:36
 Operator : MA/JU
 Sample : P2648-18DL 5X
 Misc :
 ALS Vial : 13 Sample Multiplier: 1

Instrument :
 BNA_M
 ClientSampleId :
 BHC50DL

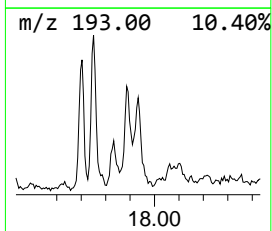
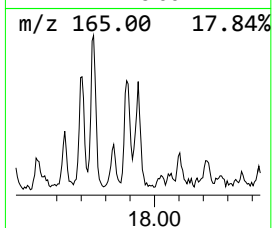
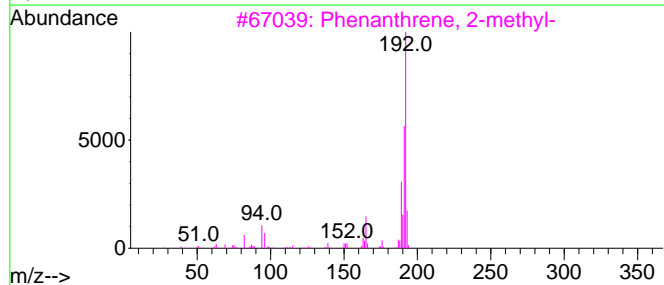
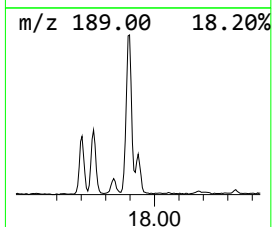
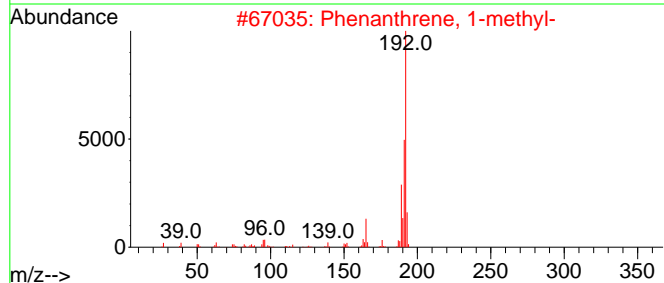
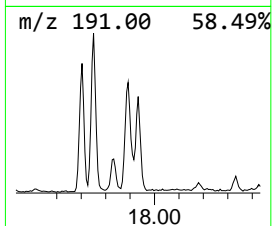
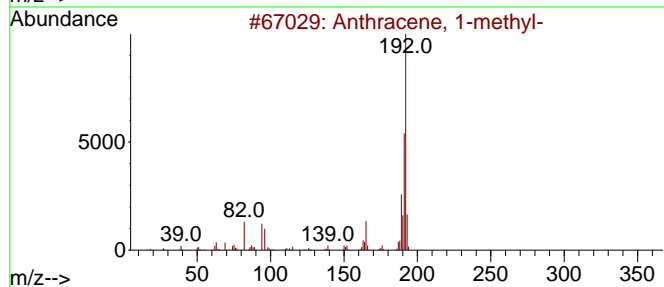
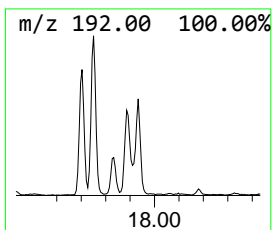
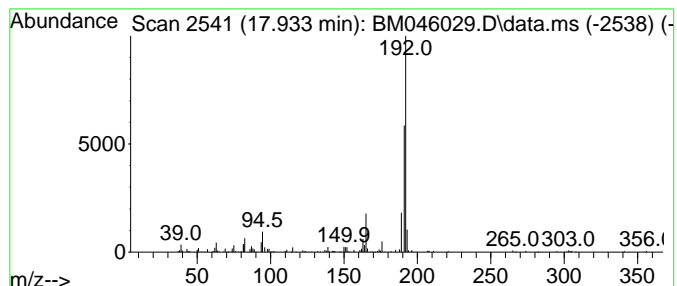
Quant Method : Z:\svoasrv\HPCHEM1\BNA_M\Methods\SFAM-EPA-BM053124.MA.M
 Quant Title : SVOA CALIBRATION

TIC Library : C:\Database\NIST20.L
 TIC Integration Parameters: LSCINT.P

 Peak Number 5 Anthracene, 1-methyl- Concentration Rank 9

R.T.	EstConc	Area	Relative to ISTD	R.T.
17.933	2.86 ng/ul	243909	Phenanthrene-d10	16.827

Hit#	of	5	Tentative ID	MW	MolForm	CAS#	Qual
1			Anthracene, 1-methyl-	192	C15H12	000610-48-0	83
2			Phenanthrene, 1-methyl-	192	C15H12	000832-69-9	76
3			Phenanthrene, 2-methyl-	192	C15H12	002531-84-2	72
4			Propyne, 1,3-diphenyl-	192	C15H12	004980-70-5	72
5			Anthracene, 2-methyl-	192	C15H12	000613-12-7	70



Data Path : Z:\svoasrv\HPCHEM1\BNA_M\Data\BM061324\
 Data File : BM046029.D
 Acq On : 13 Jun 2024 18:36
 Operator : MA/JU
 Sample : P2648-18DL 5X
 Misc :
 ALS Vial : 13 Sample Multiplier: 1

Instrument :
 BNA_M
 ClientSampleId :
 BHC50DL

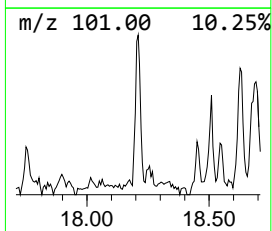
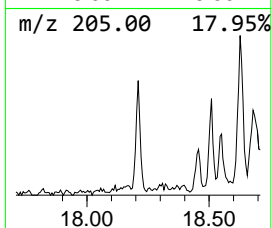
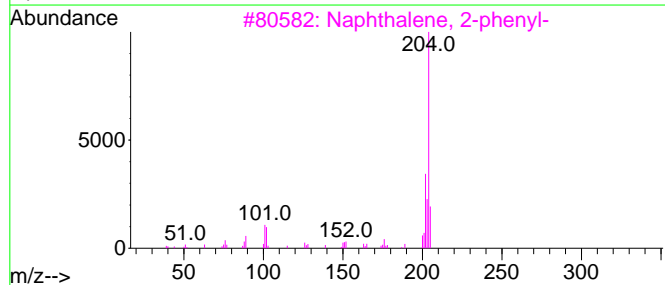
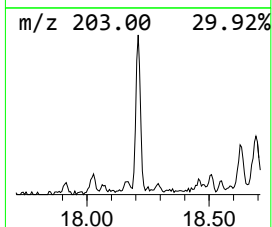
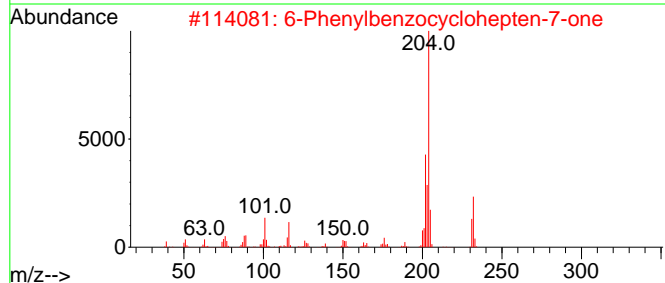
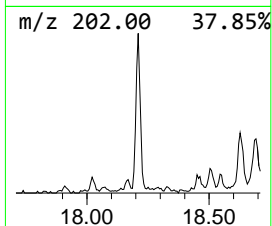
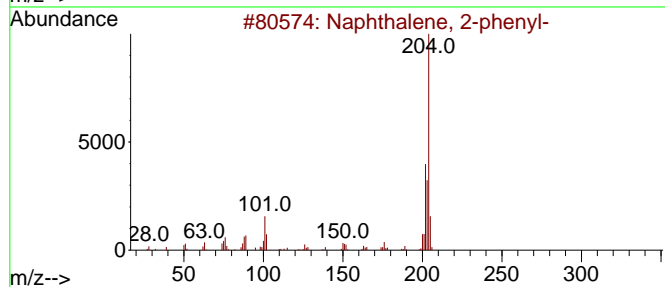
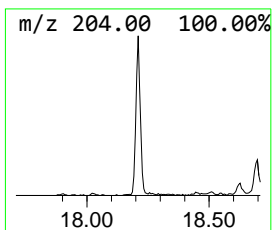
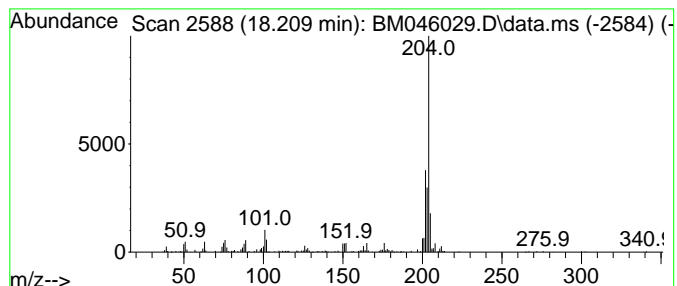
Quant Method : Z:\svoasrv\HPCHEM1\BNA_M\Methods\SFAM-EPA-BM053124.MA.M
 Quant Title : SVOA CALIBRATION

TIC Library : C:\Database\NIST20.L
 TIC Integration Parameters: LSCINT.P

 Peak Number 6 Naphthalene, 2-phenyl- Concentration Rank 14

R.T.	EstConc	Area	Relative to ISTD	R.T.
18.209	2.02 ng/ul	172289	Phenanthrene-d10	16.827

Hit#	of	5	Tentative ID	MW	MolForm	CAS#	Qual
1			Naphthalene, 2-phenyl-	204	C16H12	000612-94-2	93
2			6-Phenylbenzocyclohepten-7-one	232	C17H12O	093327-56-1	91
3			Naphthalene, 2-phenyl-	204	C16H12	000612-94-2	90
4			Naphthalene, 2-phenyl-	204	C16H12	000612-94-2	81
5			Naphthalene, 2-phenyl-	204	C16H12	000612-94-2	81



Data Path : Z:\svoasrv\HPCHEM1\BNA_M\Data\BM061324\
 Data File : BM046029.D
 Acq On : 13 Jun 2024 18:36
 Operator : MA/JU
 Sample : P2648-18DL 5X
 Misc :
 ALS Vial : 13 Sample Multiplier: 1

Instrument :
 BNA_M
 ClientSampleId :
 BHC50DL

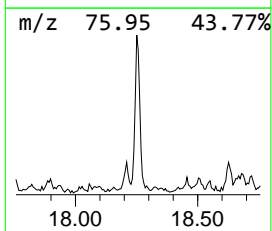
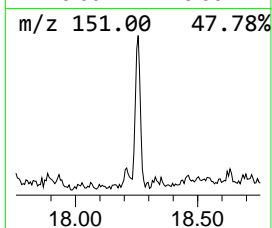
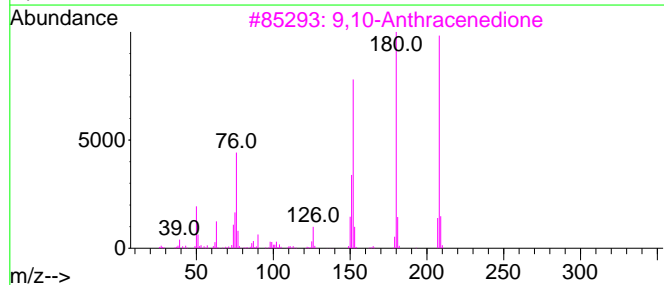
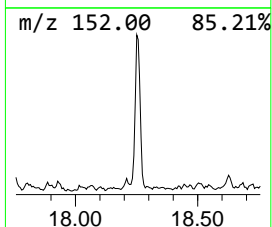
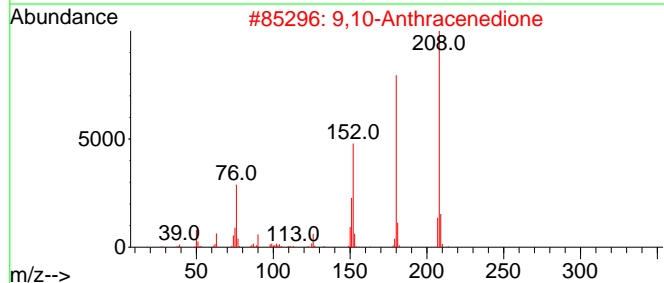
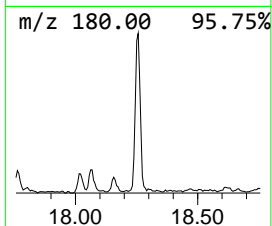
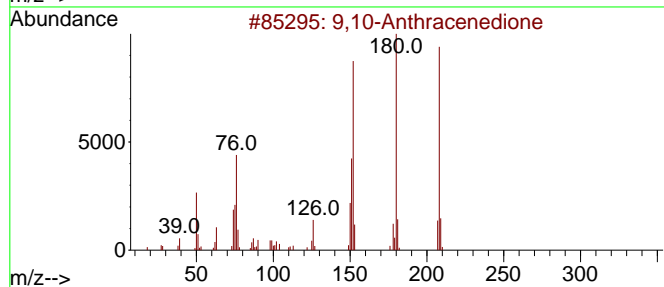
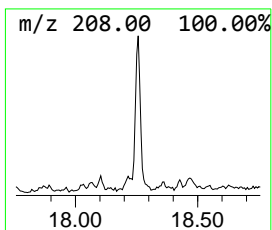
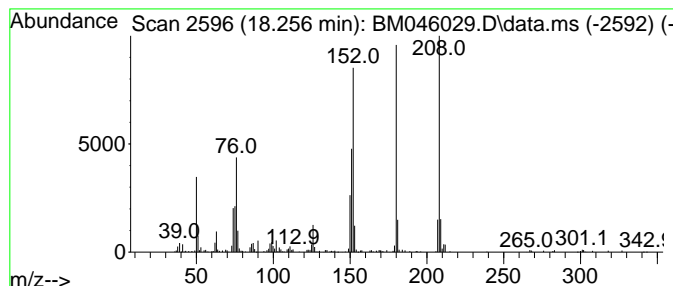
Quant Method : Z:\svoasrv\HPCHEM1\BNA_M\Methods\SFAM-EPA-BM053124.MA.M
 Quant Title : SVOA CALIBRATION

TIC Library : C:\Database\NIST20.L
 TIC Integration Parameters: LSCINT.P

 Peak Number 7 9,10-Anthracenedione Concentration Rank 8

R.T.	EstConc	Area	Relative to ISTD	R.T.
18.256	3.16 ng/ul	269304	Phenanthrene-d10	16.827

Hit#	of	Tentative ID	MW	MolForm	CAS#	Qual
1	5	9,10-Anthracenedione	208	C14H8O2	000084-65-1	95
2		9,10-Anthracenedione	208	C14H8O2	000084-65-1	94
3		9,10-Anthracenedione	208	C14H8O2	000084-65-1	94
4		9,10-Anthracenedione	208	C14H8O2	000084-65-1	91
5		9H-Fluoren-9-one	180	C13H8O	000486-25-9	87



Data Path : Z:\svoasrv\HPCHEM1\BNA_M\Data\BM061324\
 Data File : BM046029.D
 Acq On : 13 Jun 2024 18:36
 Operator : MA/JU
 Sample : P2648-18DL 5X
 Misc :
 ALS Vial : 13 Sample Multiplier: 1

Instrument :
 BNA_M
 ClientSampleId :
 BHC50DL

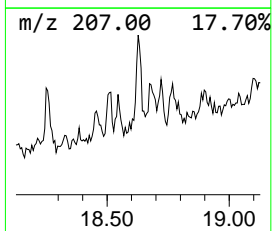
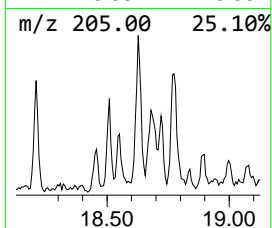
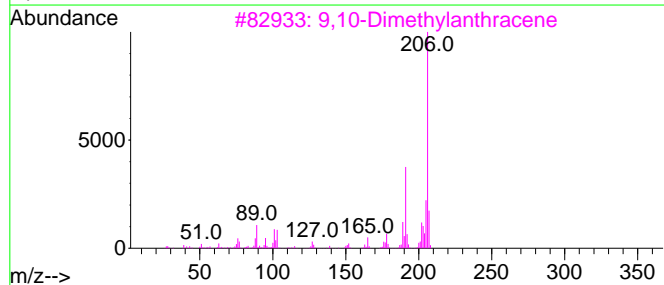
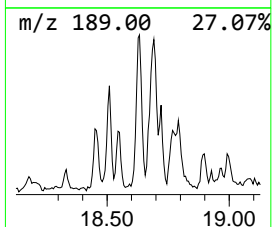
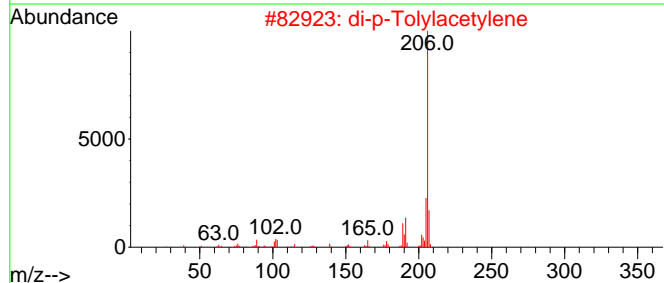
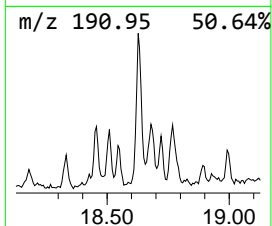
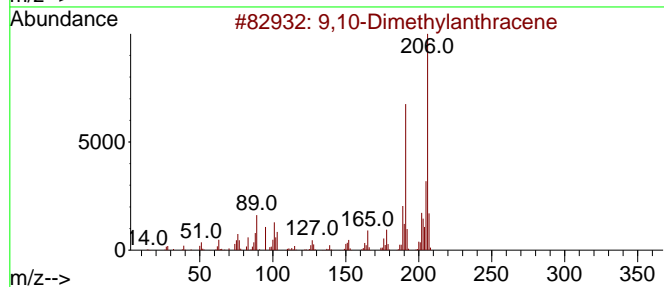
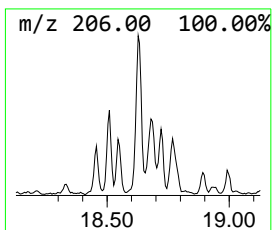
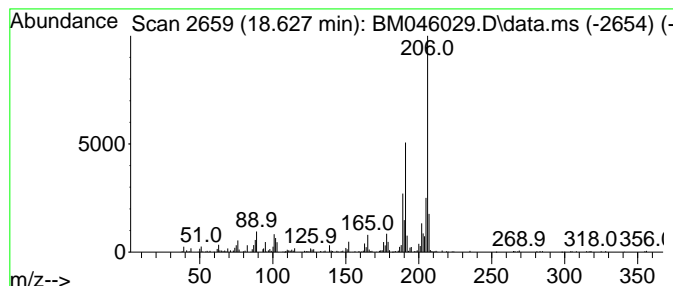
Quant Method : Z:\svoasrv\HPCHEM1\BNA_M\Methods\SFAM-EPA-BM053124.MA.M
 Quant Title : SVOA CALIBRATION

TIC Library : C:\Database\NIST20.L
 TIC Integration Parameters: LSCINT.P

 Peak Number 8 9,10-Dimethylantracene Concentration Rank 7

R.T.	EstConc	Area	Relative to ISTD	R.T.
18.627	3.22 ng/ul	274644	Phenanthrene-d10	16.827

Hit#	of	5	Tentative ID	MW	MolForm	CAS#	Qual
1			9,10-Dimethylantracene	206	C16H14	000781-43-1	95
2			di-p-Tolylacetylene	206	C16H14	002789-88-0	93
3			9,10-Dimethylantracene	206	C16H14	000781-43-1	91
4			9,10-Dimethylantracene	206	C16H14	000781-43-1	91
5			Phenanthrene, 2,3-dimethyl-	206	C16H14	003674-65-5	90



Data Path : Z:\svoasrv\HPCHEM1\BNA_M\Data\BM061324\
 Data File : BM046029.D
 Acq On : 13 Jun 2024 18:36
 Operator : MA/JU
 Sample : P2648-18DL 5X
 Misc :
 ALS Vial : 13 Sample Multiplier: 1

Instrument :
 BNA_M
 ClientSampleId :
 BHC50DL

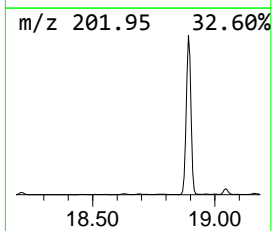
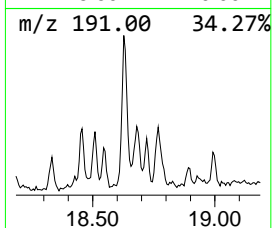
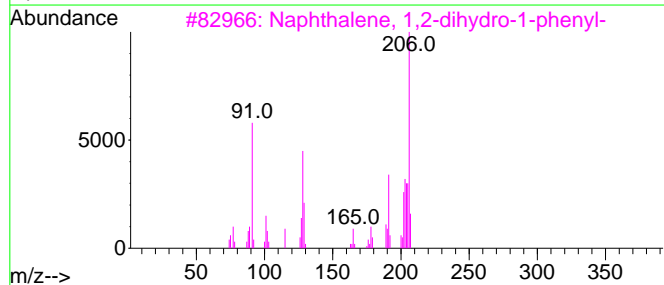
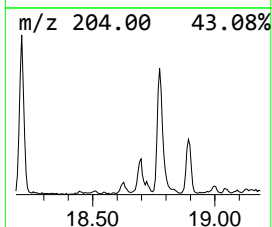
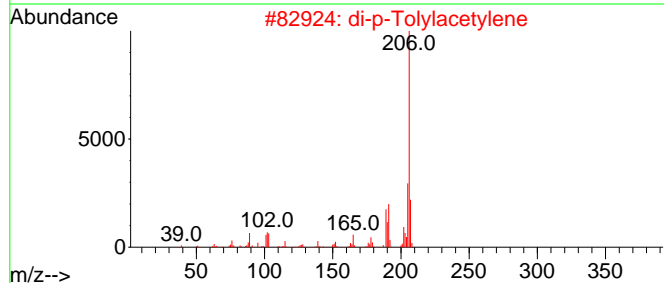
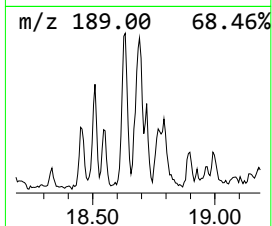
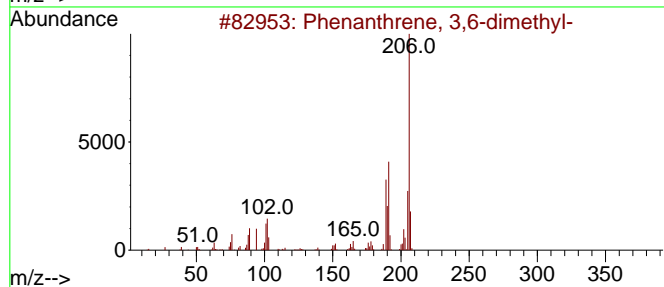
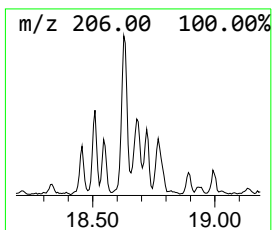
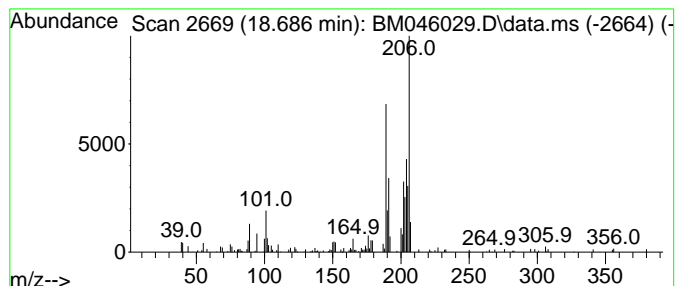
Quant Method : Z:\svoasrv\HPCHEM1\BNA_M\Methods\SFAM-EPA-BM053124.MA.M
 Quant Title : SVOA CALIBRATION

TIC Library : C:\Database\NIST20.L
 TIC Integration Parameters: LSCINT.P

 Peak Number 9 Phenanthrene, 3,6-dimethyl- Concentration Rank 10

R.T.	EstConc	Area	Relative to ISTD	R.T.
18.686	2.51 ng/ul	214085	Phenanthrene-d10	16.827

Hit#	of	5	Tentative ID	MW	MolForm	CAS#	Qual
1			Phenanthrene, 3,6-dimethyl-	206	C16H14	001576-67-6	78
2			di-p-Tolylacetylene	206	C16H14	002789-88-0	49
3			Naphthalene, 1,2-dihydro-1-phenyl-	206	C16H14	016606-46-5	46
4			9,10-Dimethylanthracene	206	C16H14	000781-43-1	45
5			Naphthalene, 1,2-dihydro-4-phenyl-	206	C16H14	007469-40-1	43



Data Path : Z:\svoasrv\HPCHEM1\BNA_M\Data\BM061324\
 Data File : BM046029.D
 Acq On : 13 Jun 2024 18:36
 Operator : MA/JU
 Sample : P2648-18DL 5X
 Misc :
 ALS Vial : 13 Sample Multiplier: 1

Instrument :
 BNA_M
 ClientSampleId :
 BHC50DL

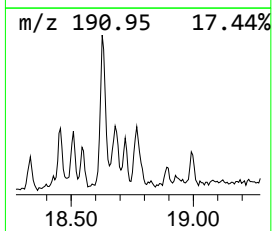
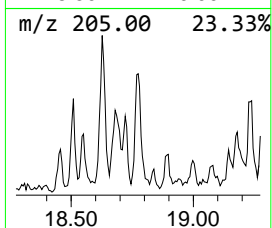
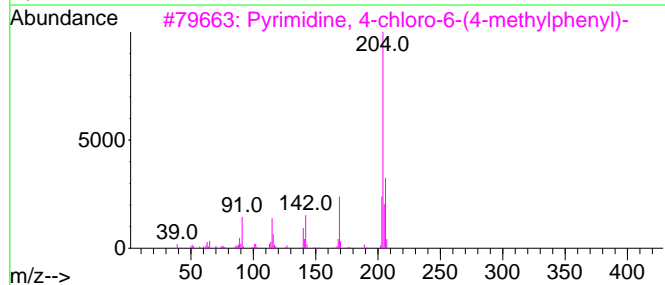
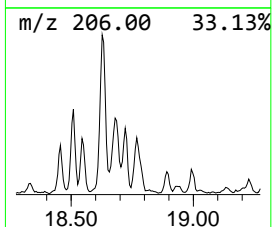
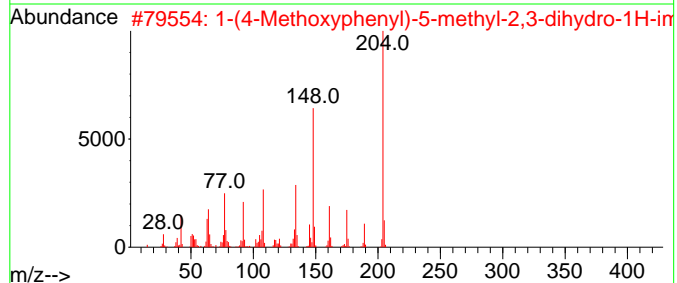
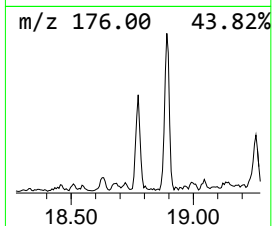
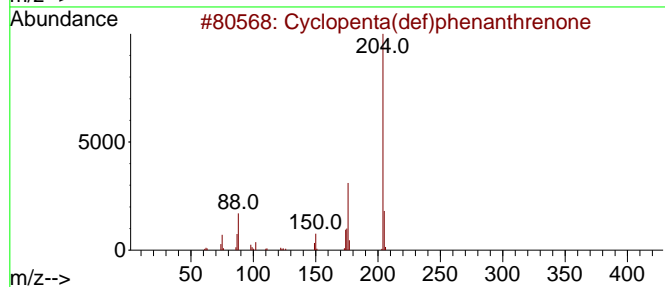
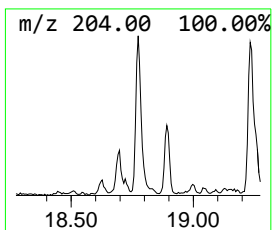
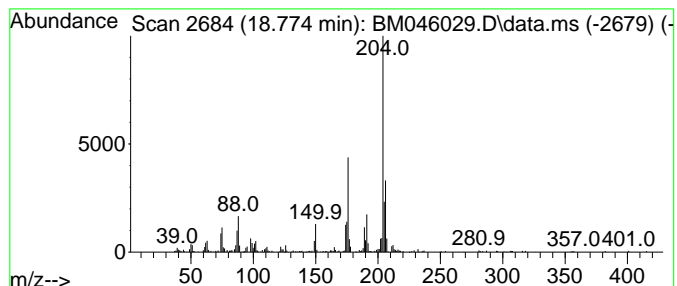
Quant Method : Z:\svoasrv\HPCHEM1\BNA_M\Methods\SFAM-EPA-BM053124.MA.M
 Quant Title : SVOA CALIBRATION

TIC Library : C:\Database\NIST20.L
 TIC Integration Parameters: LSCINT.P

 Peak Number 10 Cyclopenta(def)phenanthrene Concentration Rank 6

R.T.	EstConc	Area	Relative to ISTD	R.T.
18.774	3.26 ng/ul	278229	Phenanthrene-d10	16.827

Hit#	of	5	Tentative ID	MW	MolForm	CAS#	Qual
1			Cyclopenta(def)phenanthrene	204	C15H8O	005737-13-3	94
2			1-(4-Methoxyphenyl)-5-methyl-2,3...	204	C11H12N2O2	014058-90-3	43
3			Pyrimidine, 4-chloro-6-(4-methyl...	204	C11H9ClN2	1000380-55-8	43
4			[1,1'-Biphenyl]-2,2'-dicarbonitrile	204	C14H8N2	004341-02-0	43
5			Benzene, 1-chloro-4-phenoxy-	204	C12H9ClO	007005-72-3	43



Data Path : Z:\svoasrv\HPCHEM1\BNA_M\Data\BM061324\
 Data File : BM046029.D
 Acq On : 13 Jun 2024 18:36
 Operator : MA/JU
 Sample : P2648-18DL 5X
 Misc :
 ALS Vial : 13 Sample Multiplier: 1

Instrument :
 BNA_M
 ClientSampleId :
 BHC50DL

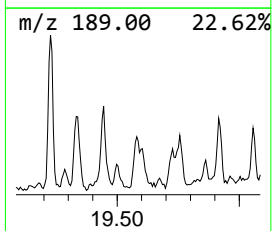
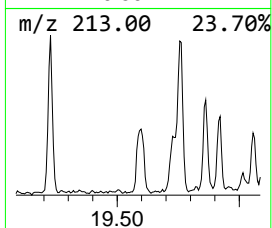
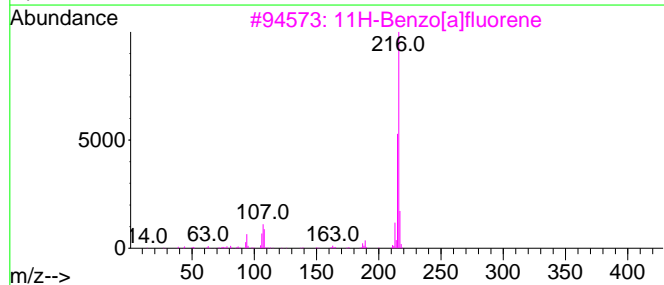
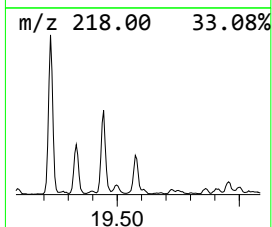
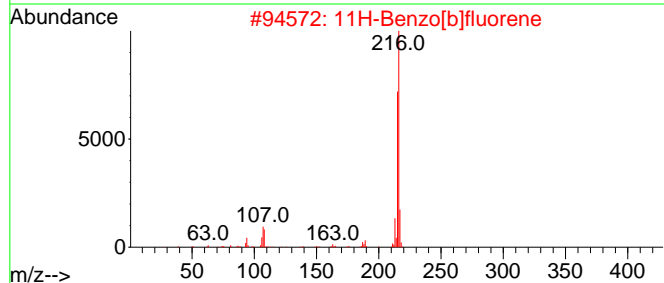
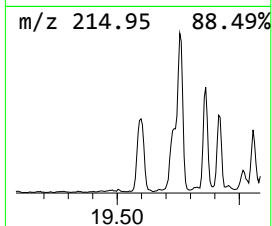
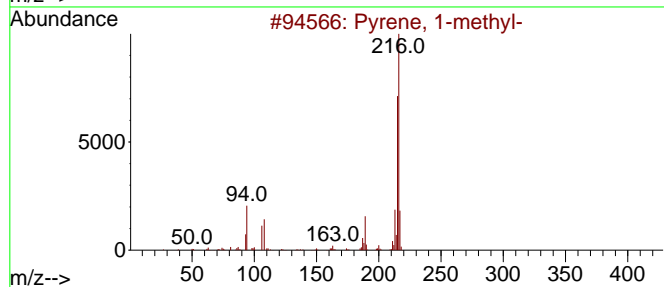
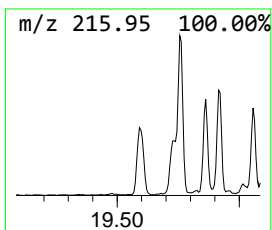
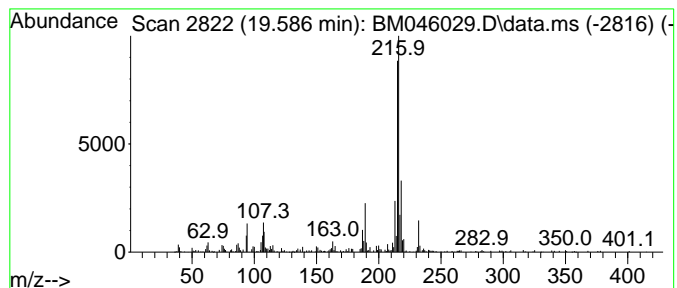
Quant Method : Z:\svoasrv\HPCHEM1\BNA_M\Methods\SFAM-EPA-BM053124.MA.M
 Quant Title : SVOA CALIBRATION

TIC Library : C:\Database\NIST20.L
 TIC Integration Parameters: LSCINT.P

 Peak Number 11 Pyrene, 1-methyl- Concentration Rank 11

R.T.	EstConc	Area	Relative to ISTD	R.T.
19.586	2.47 ng/ul	478331	Chrysene-d12	21.044

Hit#	of 5	Tentative ID	MW	MolForm	CAS#	Qual
1		Pyrene, 1-methyl-	216	C17H12	002381-21-7	93
2		11H-Benzo[b]fluorene	216	C17H12	000243-17-4	91
3		11H-Benzo[a]fluorene	216	C17H12	000238-84-6	87
4		11H-Benzo[b]fluorene	216	C17H12	000243-17-4	83
5		Pyrene, 1-methyl-	216	C17H12	002381-21-7	76



Data Path : Z:\svoasrv\HPCHEM1\BNA_M\Data\BM061324\
 Data File : BM046029.D
 Acq On : 13 Jun 2024 18:36
 Operator : MA/JU
 Sample : P2648-18DL 5X
 Misc :
 ALS Vial : 13 Sample Multiplier: 1

Instrument :
 BNA_M
 ClientSampleId :
 BHC50DL

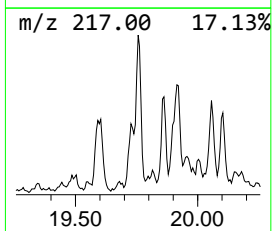
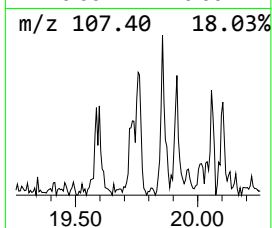
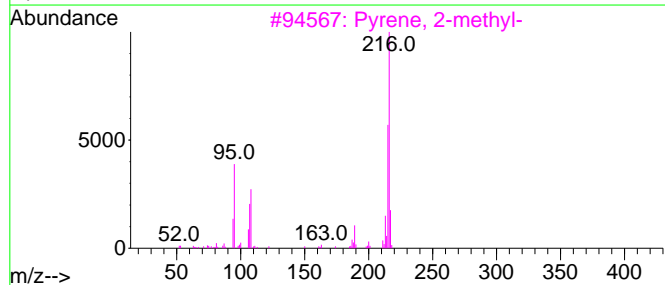
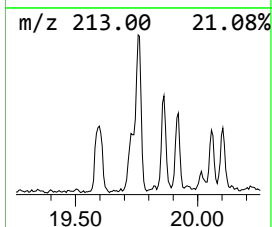
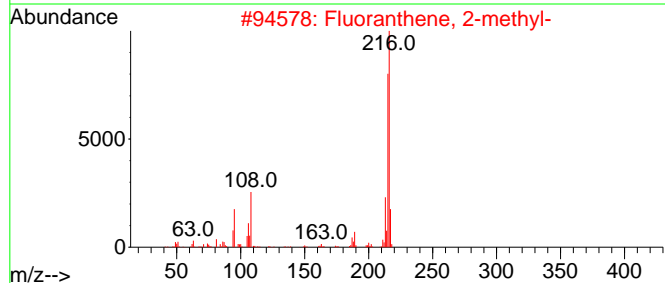
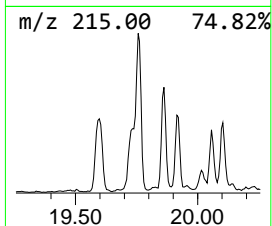
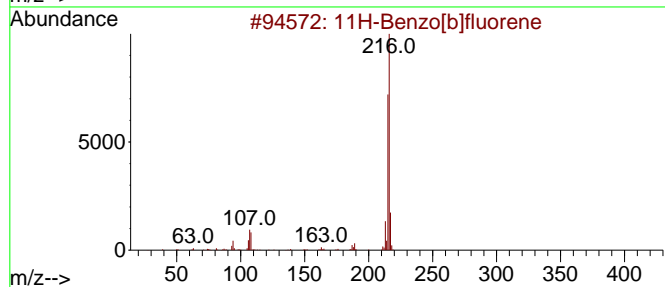
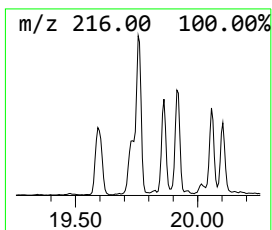
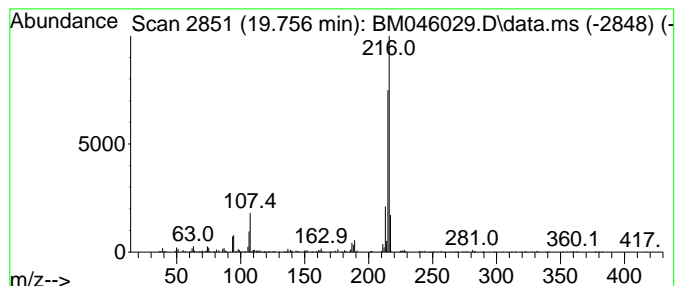
Quant Method : Z:\svoasrv\HPCHEM1\BNA_M\Methods\SFAM-EPA-BM053124.MA.M
 Quant Title : SVOA CALIBRATION

TIC Library : C:\Database\NIST20.L
 TIC Integration Parameters: LSCINT.P

 Peak Number 12 11H-Benzo[b]fluorene Concentration Rank 13

R.T.	EstConc	Area	Relative to ISTD	R.T.
19.756	2.18 ng/ul	422459	Chrysene-d12	21.044

Hit#	of 5	Tentative ID	MW	MolForm	CAS#	Qual
1		11H-Benzo[b]fluorene	216	C17H12	000243-17-4	95
2		Fluoranthene, 2-methyl-	216	C17H12	033543-31-6	94
3		Pyrene, 2-methyl-	216	C17H12	003442-78-2	94
4		Pyrene, 1-methyl-	216	C17H12	002381-21-7	91
5		11H-Benzo[b]fluorene	216	C17H12	000243-17-4	91



Data Path : Z:\svoasrv\HPCHEM1\BNA_M\Data\BM061324\
 Data File : BM046029.D
 Acq On : 13 Jun 2024 18:36
 Operator : MA/JU
 Sample : P2648-18DL 5X
 Misc :
 ALS Vial : 13 Sample Multiplier: 1

Instrument :
 BNA_M
 ClientSampleId :
 BHC50DL

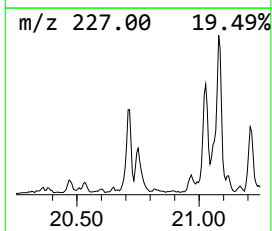
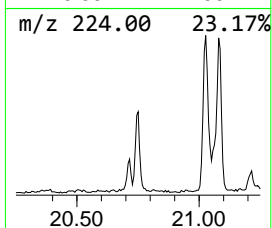
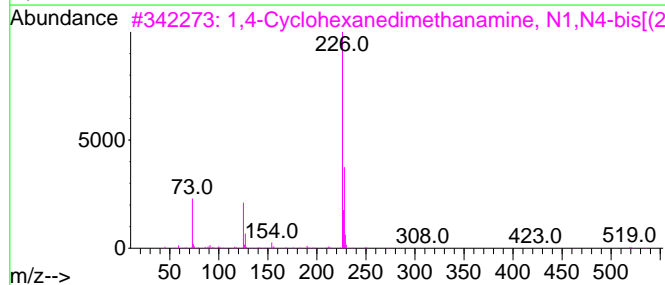
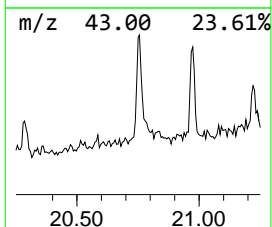
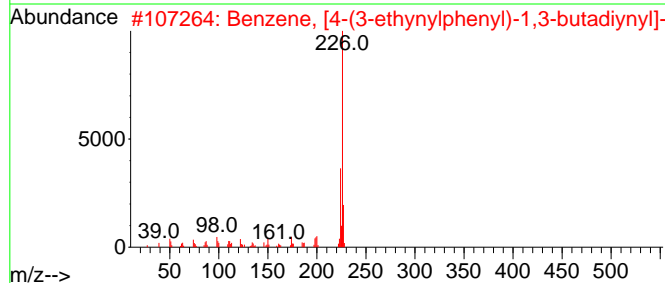
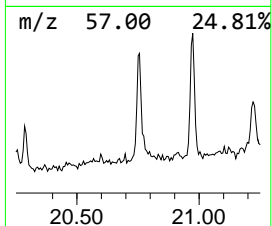
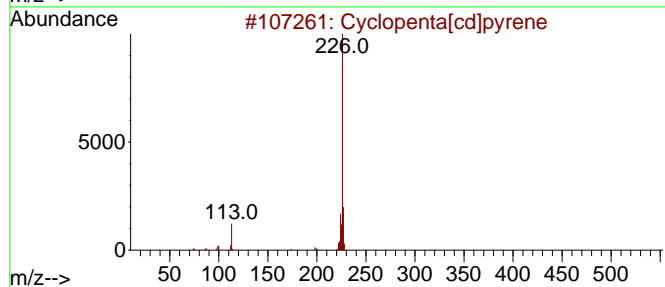
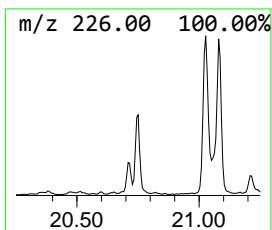
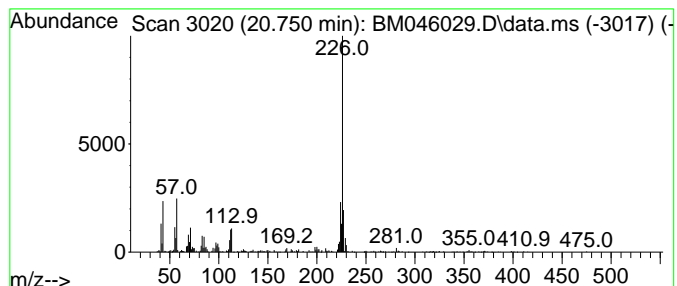
Quant Method : Z:\svoasrv\HPCHEM1\BNA_M\Methods\SFAM-EPA-BM053124.MA.M
 Quant Title : SVOA CALIBRATION

TIC Library : C:\Database\NIST20.L
 TIC Integration Parameters: LSCINT.P

 Peak Number 13 Cyclopenta[cd]pyrene Concentration Rank 12

R.T.	EstConc	Area	Relative to ISTD	R.T.
20.750	2.40 ng/ul	464297	Chrysene-d12	21.044

Hit#	of	5	Tentative ID	MW	MolForm	CAS#	Qual
1			Cyclopenta[cd]pyrene	226	C18H10	027208-37-3	76
2			Benzene, [4-(3-ethynylphenyl)-1,...	226	C18H10	1000115-87-3	53
3			1,4-Cyclohexanedimethanamine, N1...	534	C28H44Cl2N2Si2	1000498-77-1	47
4			Benzo[ghi]fluoranthene	226	C18H10	000203-12-3	43
5			Diheptylisobutylamine	269	C18H39N	1000310-32-0	42



Data Path : Z:\svoasrv\HPCHEM1\BNA_M\Data\BM061324\
 Data File : BM046029.D
 Acq On : 13 Jun 2024 18:36
 Operator : MA/JU
 Sample : P2648-18DL 5X
 Misc :
 ALS Vial : 13 Sample Multiplier: 1

Instrument :
 BNA_M
 ClientSampleId :
 BHC50DL

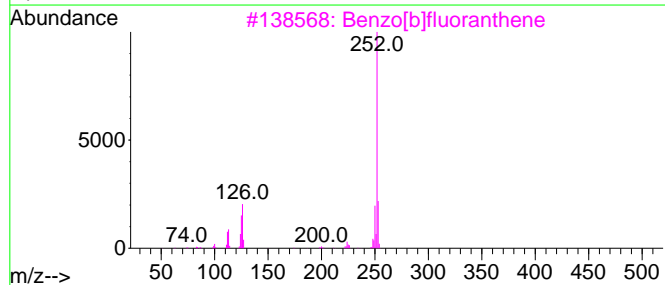
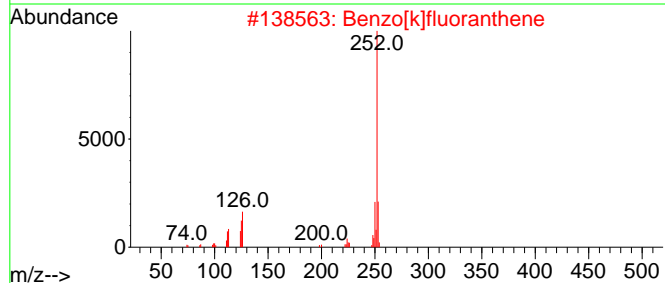
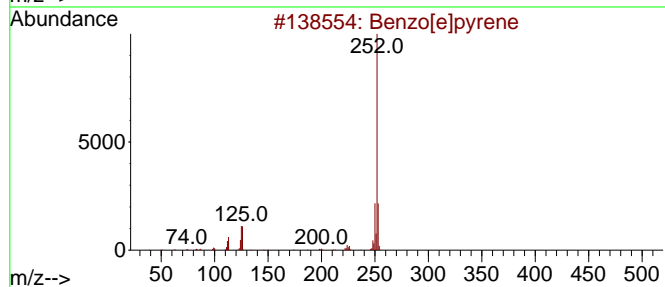
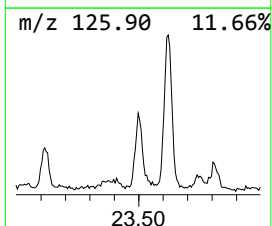
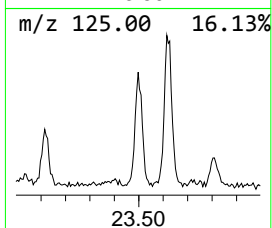
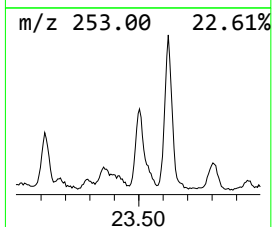
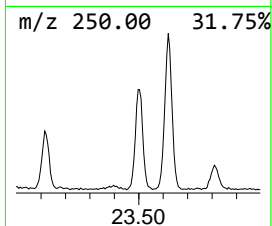
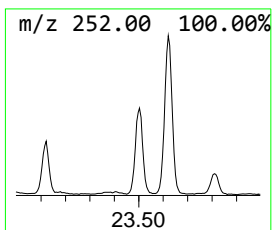
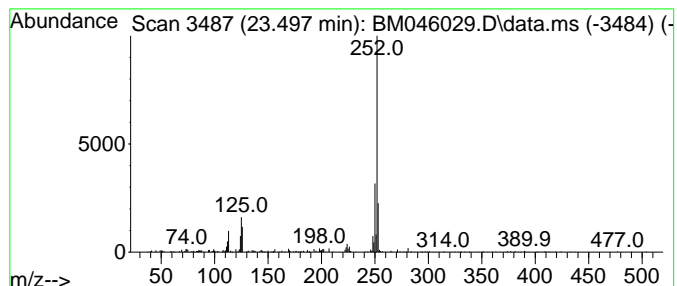
Quant Method : Z:\svoasrv\HPCHEM1\BNA_M\Methods\SFAM-EPA-BM053124.MA.M
 Quant Title : SVOA CALIBRATION

TIC Library : C:\Database\NIST20.L
 TIC Integration Parameters: LSCINT.P

 Peak Number 14 Benzo[e]pyrene Concentration Rank 4

R.T.	EstConc	Area	Relative to ISTD	R.T.
23.497	3.78 ng/ul	344003	Perylene-d12	23.750

Hit#	of	5	Tentative ID	MW	MolForm	CAS#	Qual
1			Benzo[e]pyrene	252	C20H12	000192-97-2	94
2			Benzo[k]fluoranthene	252	C20H12	000207-08-9	93
3			Benzo[b]fluoranthene	252	C20H12	000205-99-2	90
4			Benzo[b]fluoranthene	252	C20H12	000205-99-2	90
5			Benzo[a]pyrene	252	C20H12	000050-32-8	90



Data Path : Z:\svoasrv\HPCHEM1\BNA_M\Data\BM061324\
 Data File : BM046029.D
 Acq On : 13 Jun 2024 18:36
 Operator : MA/JU
 Sample : P2648-18DL 5X
 Misc :
 ALS Vial : 13 Sample Multiplier: 1

Instrument :
 BNA_M
 ClientSampleId :
 BHC50DL

Quant Method : Z:\svoasrv\HPCHEM1\BNA_M\Methods\SFAM-EPA-BM053124.MA.M
 Quant Title : SVOA CALIBRATION

TIC Library : C:\Database\NIST20.L
 TIC Integration Parameters: LSCINT.P

TIC Top Hit name	RT	EstConc	Units	Response	--Internal Standard--			
					#	RT	Resp	Conc
unknown-01	14.345	6.3	ng/ul	463565	3	14.080	1476420	20.0
Phenanthrene, 2...	17.703	3.7	ng/ul	315825	4	16.827	1705390	20.0
Phenanthrene, 1...	17.750	7.8	ng/ul	667608	4	16.827	1705390	20.0
Benzaldehyde, 3...	17.892	6.4	ng/ul	542383	4	16.827	1705390	20.0
Anthracene, 1-m...	17.933	2.9	ng/ul	243909	4	16.827	1705390	20.0
Naphthalene, 2-...	18.209	2.0	ng/ul	172289	4	16.827	1705390	20.0
9,10-Anthracene...	18.256	3.2	ng/ul	269304	4	16.827	1705390	20.0
9,10-Dimethylan...	18.627	3.2	ng/ul	274644	4	16.827	1705390	20.0
Phenanthrene, 3...	18.686	2.5	ng/ul	214085	4	16.827	1705390	20.0
Cyclopenta(def)...	18.774	3.3	ng/ul	278229	4	16.827	1705390	20.0
Pyrene, 1-methyl-	19.586	2.5	ng/ul	478331	5	21.044	3872820	20.0
11H-Benzo[b]flu...	19.756	2.2	ng/ul	422459	5	21.044	3872820	20.0
Cyclopenta[cd]p...	20.750	2.4	ng/ul	464297	5	21.044	3872820	20.0
Benzo[e]pyrene	23.497	3.8	ng/ul	344003	6	23.750	1820940	20.0