

Data Path : Z:\svoasrv\HPCHEM1\BNA\_M\Data\BM061325\  
 Data File : BM050312.D  
 Acq On : 13 Jun 2025 23:03  
 Operator : RC/JU  
 Sample : Q2296-24  
 Misc :  
 ALS Vial : 14 Sample Multiplier: 1

Instrument :  
 BNA\_M  
 ClientSampleId :  
 WC-6

Quant Time: Jun 14 00:41:20 2025  
 Quant Method : Z:\svoasrv\HPCHEM1\BNA\_M\Methods\8270-BM060525.M  
 Quant Title : ASP BNA STANDARDS FOR 5 POINT CALIBRATION  
 QLast Update : Mon Jun 09 11:54:38 2025  
 Response via : Initial Calibration

Compound	R.T.	QIon	Response	Conc	Units	Dev(Min)
Internal Standards						
1) 1,4-Dichlorobenzene-d4	7.763	152	352982	20.000	ng	0.00
21) Naphthalene-d8	10.546	136	1314559	20.000	ng	#-0.01
39) Acenaphthene-d10	14.392	164	678439	20.000	ng	0.00
64) Phenanthrene-d10	17.128	188	1295277	20.000	ng	-0.01
76) Chrysene-d12	21.357	240	1355341	20.000	ng	-0.02
86) Perylene-d12	24.327	264	855453	20.000	ng	-0.02
System Monitoring Compounds						
5) 2-Fluorophenol	5.358	112	3009388	142.219	ng	0.00
7) Phenol-d6	6.928	99	3301050	118.507	ng	0.00
23) Nitrobenzene-d5	8.910	82	2580209	102.081	ng	0.00
42) 2,4,6-Tribromophenol	15.875	330	1130724	146.528	ng	0.00
45) 2-Fluorobiphenyl	13.016	172	4848170	96.747	ng	-0.01
79) Terphenyl-d14	19.757	244	6717832	93.928	ng	-0.01

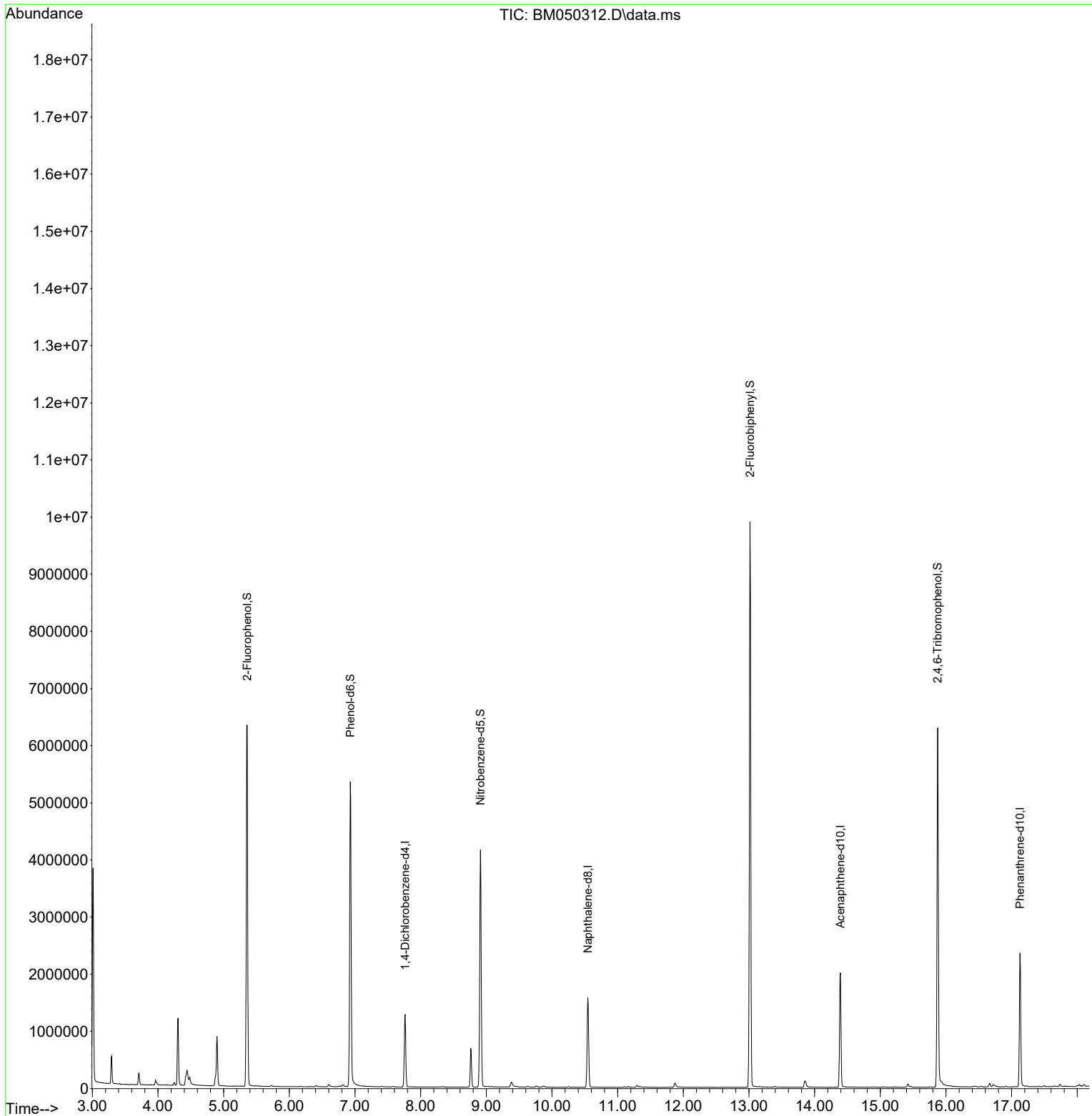
Target Compounds Qvalue

(#) = qualifier out of range (m) = manual integration (+) = signals summed

Data Path : Z:\svoasrv\HPCHEM1\BNA\_M\Data\BM061325\  
 Data File : BM050312.D  
 Acq On : 13 Jun 2025 23:03  
 Operator : RC/JU  
 Sample : Q2296-24  
 Misc :  
 ALS Vial : 14 Sample Multiplier: 1

Instrument :  
 BNA\_M  
 ClientSampleId :  
 WC-6

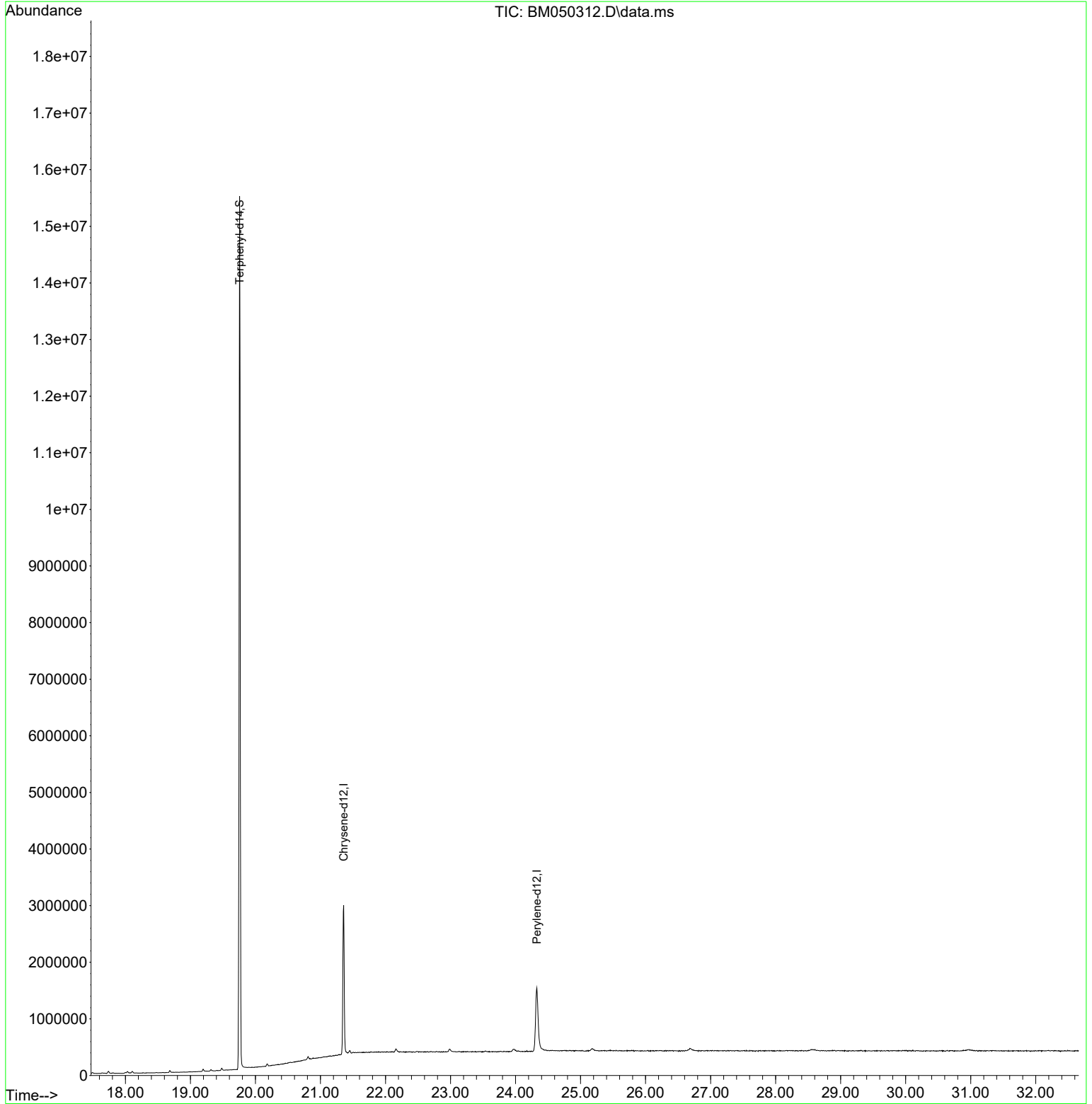
Quant Time: Jun 14 00:41:20 2025  
 Quant Method : Z:\svoasrv\HPCHEM1\BNA\_M\Methods\8270-BM060525.M  
 Quant Title : ASP BNA STANDARDS FOR 5 POINT CALIBRATION  
 QLast Update : Mon Jun 09 11:54:38 2025  
 Response via : Initial Calibration

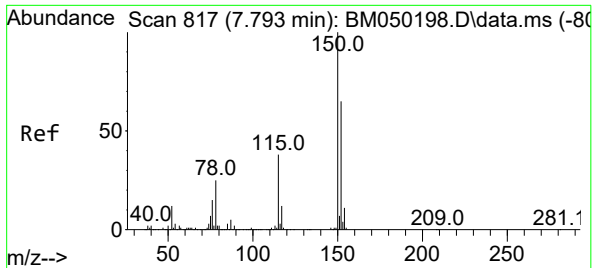


Data Path : Z:\svoasrv\HPCHEM1\BNA\_M\Data\BM061325\  
 Data File : BM050312.D  
 Acq On : 13 Jun 2025 23:03  
 Operator : RC/JU  
 Sample : Q2296-24  
 Misc :  
 ALS Vial : 14 Sample Multiplier: 1

Instrument :  
 BNA\_M  
 ClientSampleId :  
 WC-6

Quant Time: Jun 14 00:41:20 2025  
 Quant Method : Z:\svoasrv\HPCHEM1\BNA\_M\Methods\8270-BM060525.M  
 Quant Title : ASP BNA STANDARDS FOR 5 POINT CALIBRATION  
 QLast Update : Mon Jun 09 11:54:38 2025  
 Response via : Initial Calibration



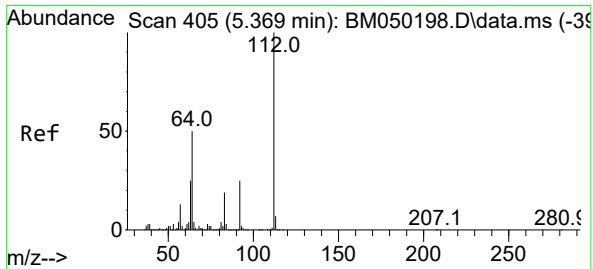
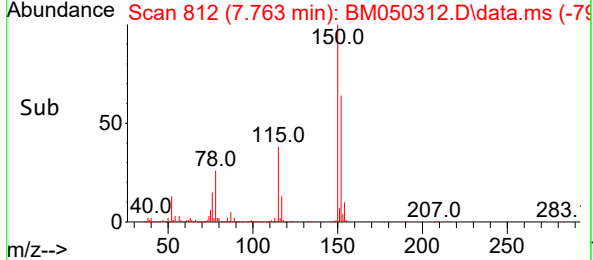
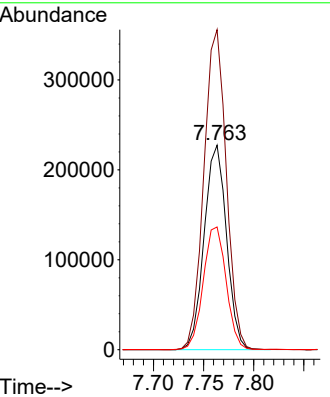
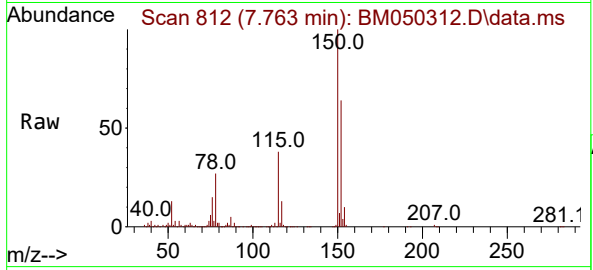


#1  
 1,4-Dichlorobenzene-d4  
 Concen: 20.000 ng  
 RT: 7.763 min Scan# 81  
 Delta R.T. -0.006 min  
 Lab File: BM050312.D  
 Acq: 13 Jun 2025 23:03

Instrument :  
 BNA\_M  
 ClientSampleId :  
 WC-6

Tgt Ion:152 Resp: 352982

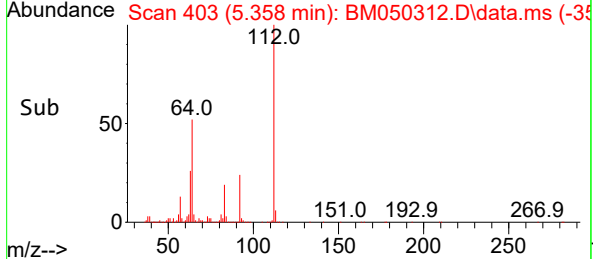
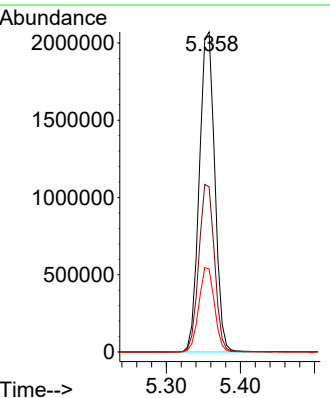
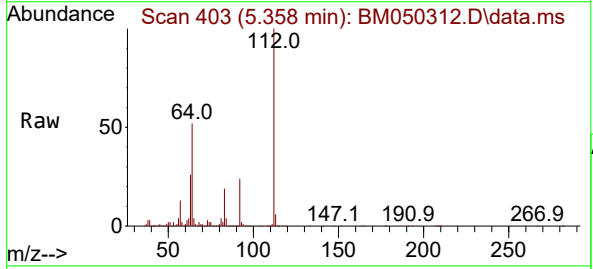
Ion	Ratio	Lower	Upper
152	100		
150	156.5	122.2	183.4
115	60.0	46.3	69.5

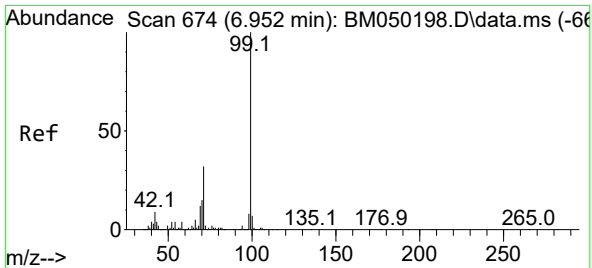


#5  
 2-Fluorophenol  
 Concen: 142.219 ng  
 RT: 5.358 min Scan# 403  
 Delta R.T. 0.000 min  
 Lab File: BM050312.D  
 Acq: 13 Jun 2025 23:03

Tgt Ion:112 Resp: 3009388

Ion	Ratio	Lower	Upper
112	100		
64	51.6	39.8	59.6
63	25.9	19.8	29.8



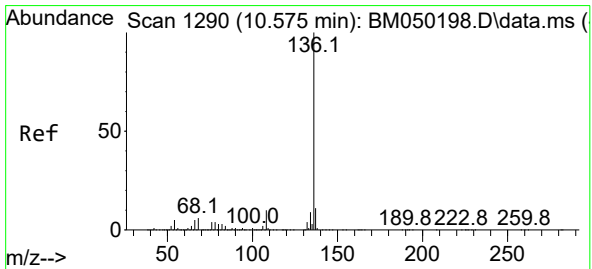
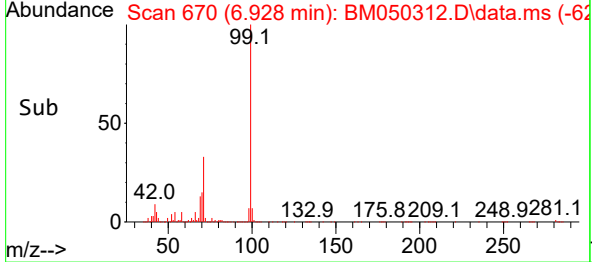
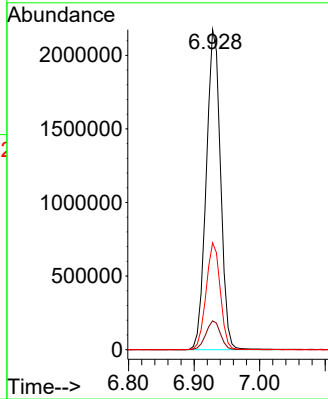
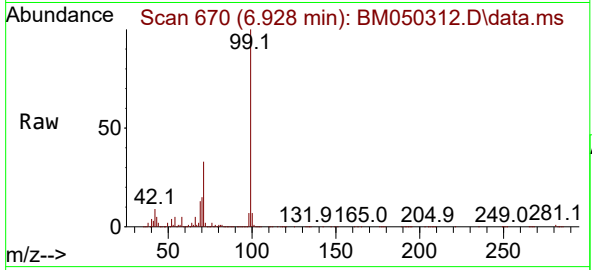


#7  
Phenol-d6  
Concen: 118.507 ng  
RT: 6.928 min Scan# 61  
Delta R.T. -0.005 min  
Lab File: BM050312.D  
Acq: 13 Jun 2025 23:03

Instrument :  
BNA\_M  
ClientSampleId :  
WC-6

Tgt Ion: 99 Resp: 3301050

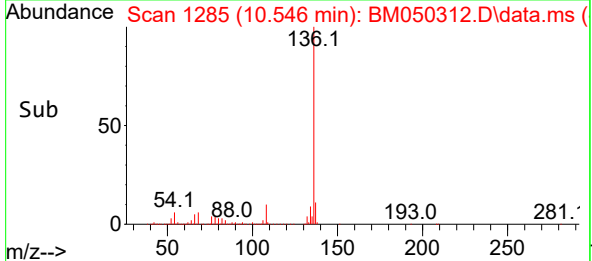
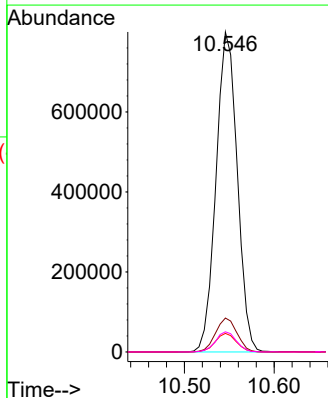
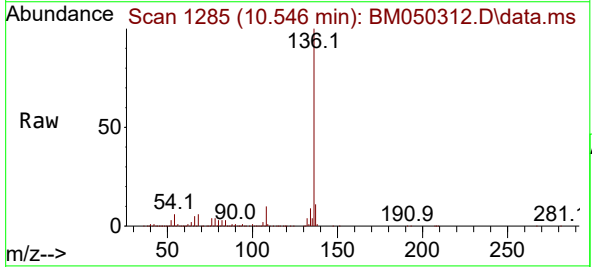
Ion	Ratio	Lower	Upper
99	100		
42	9.0	6.9	10.3
71	33.4	25.3	37.9

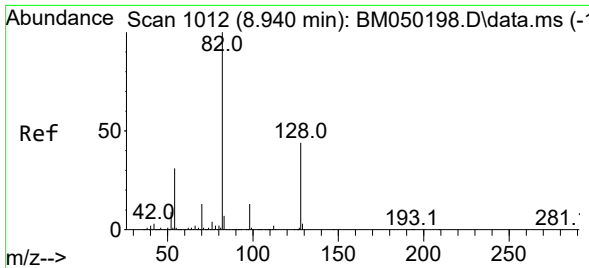


#21  
Naphthalene-d8  
Concen: 20.000 ng  
RT: 10.546 min Scan# 1285  
Delta R.T. -0.011 min  
Lab File: BM050312.D  
Acq: 13 Jun 2025 23:03

Tgt Ion: 136 Resp: 1314559

Ion	Ratio	Lower	Upper
136	100		
137	10.6	8.6	13.0
54	5.8	3.8	5.8#
68	6.3	4.9	7.3



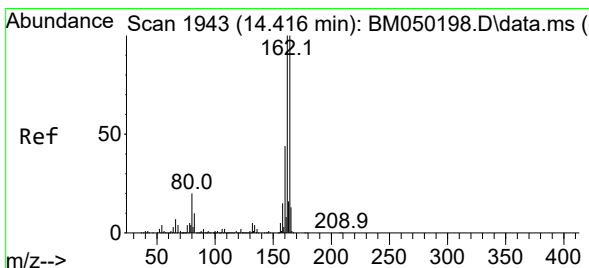
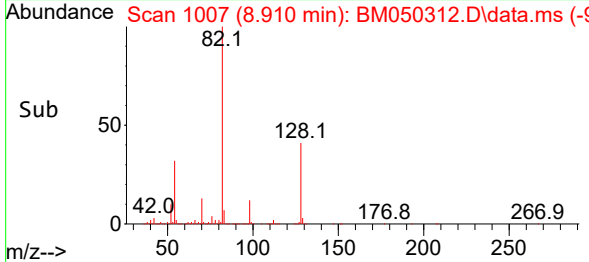
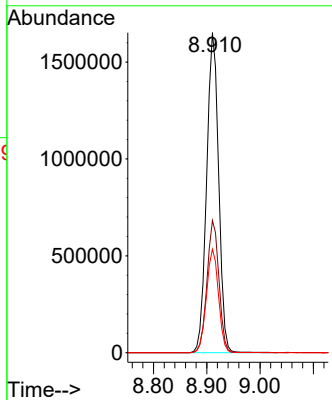
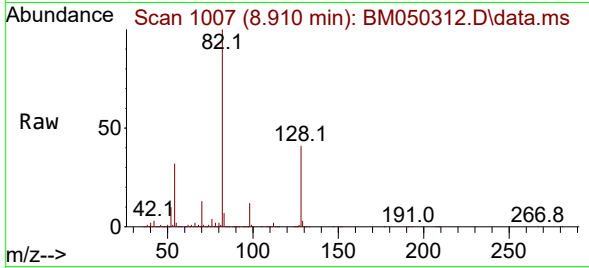


#23  
 Nitrobenzene-d5  
 Concen: 102.081 ng  
 RT: 8.910 min Scan# 1012  
 Delta R.T. -0.005 min  
 Lab File: BM050312.D  
 Acq: 13 Jun 2025 23:03

Instrument :  
 BNA\_M  
 ClientSampleId :  
 WC-6

Tgt Ion: 82 Resp: 2580209

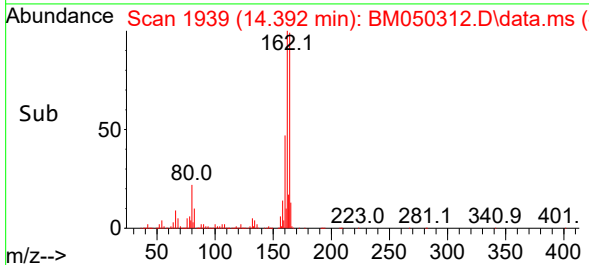
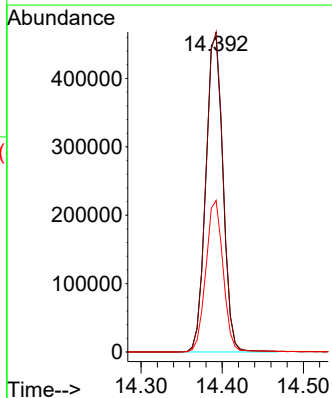
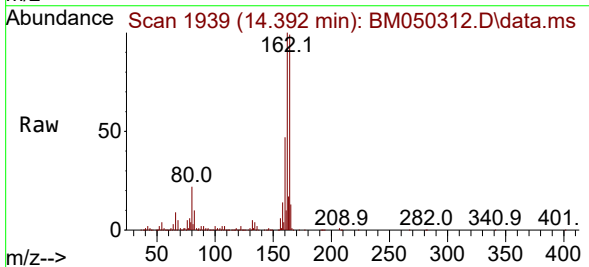
Ion	Ratio	Lower	Upper
82	100		
128	41.3	35.2	52.8
54	32.4	24.5	36.7

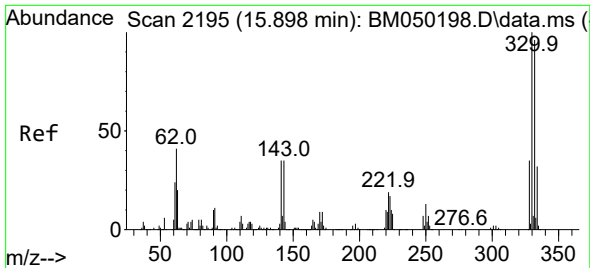


#39  
 Acenaphthene-d10  
 Concen: 20.000 ng  
 RT: 14.392 min Scan# 1939  
 Delta R.T. -0.005 min  
 Lab File: BM050312.D  
 Acq: 13 Jun 2025 23:03

Tgt Ion: 164 Resp: 678439

Ion	Ratio	Lower	Upper
164	100		
162	101.5	80.2	120.4
160	48.1	35.7	53.5

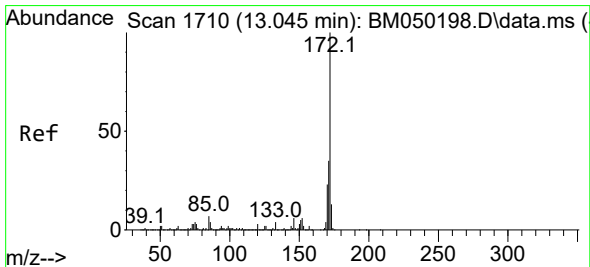
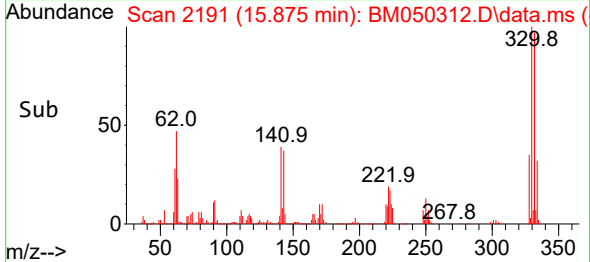
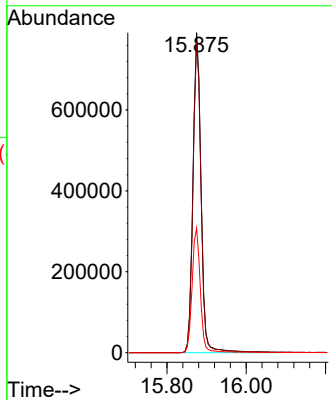
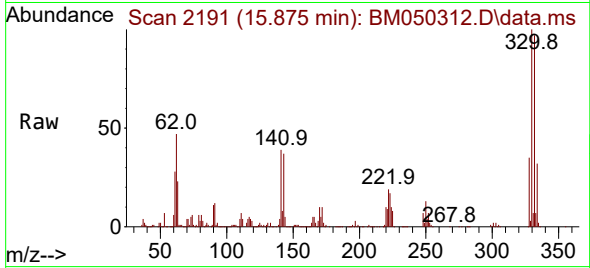




#42  
 2,4,6-Tribromophenol  
 Concen: 146.528 ng  
 RT: 15.875 min Scan# 21  
 Delta R.T. -0.005 min  
 Lab File: BM050312.D  
 Acq: 13 Jun 2025 23:03

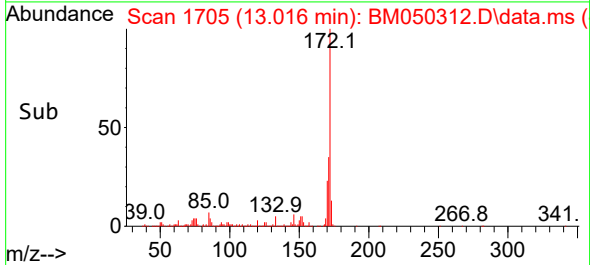
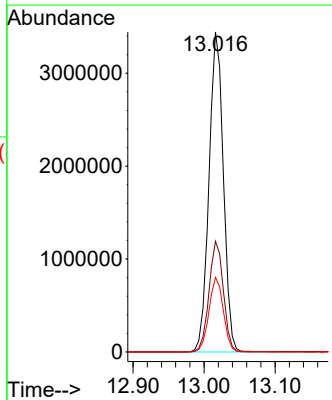
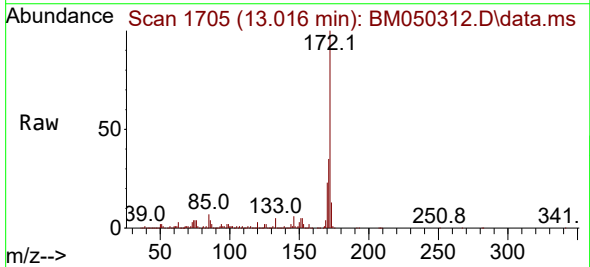
Instrument :  
 BNA\_M  
 ClientSampleId :  
 WC-6

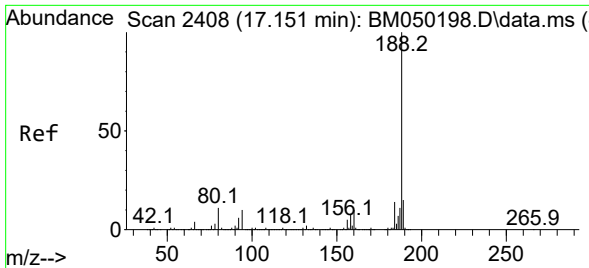
Tgt Ion:330 Resp: 1130724  
 Ion Ratio Lower Upper  
 330 100  
 332 96.6 77.5 116.3  
 141 39.5 28.8 43.2



#45  
 2-Fluorobiphenyl  
 Concen: 96.747 ng  
 RT: 13.016 min Scan# 1705  
 Delta R.T. -0.011 min  
 Lab File: BM050312.D  
 Acq: 13 Jun 2025 23:03

Tgt Ion:172 Resp: 4848170  
 Ion Ratio Lower Upper  
 172 100  
 171 34.6 27.8 41.6  
 170 23.3 18.6 27.8



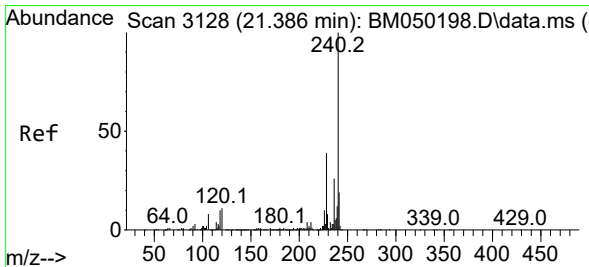
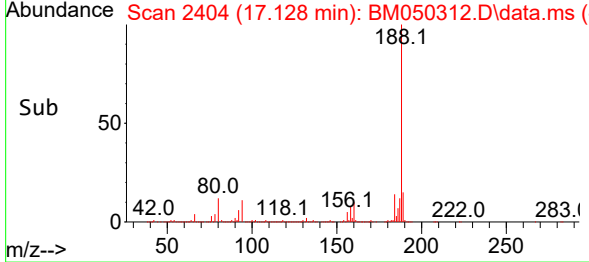
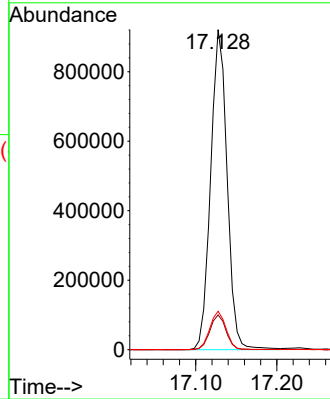
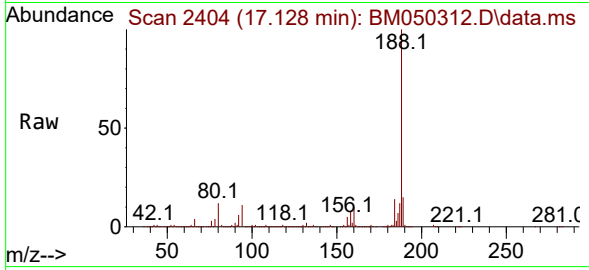


#64  
 Phenanthrene-d10  
 Concen: 20.000 ng  
 RT: 17.128 min Scan# 24  
 Delta R.T. -0.011 min  
 Lab File: BM050312.D  
 Acq: 13 Jun 2025 23:03

Instrument :  
 BNA\_M  
 ClientSampleId :  
 WC-6

Tgt Ion:188 Resp: 1295277

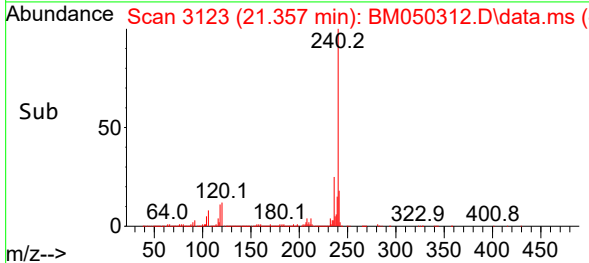
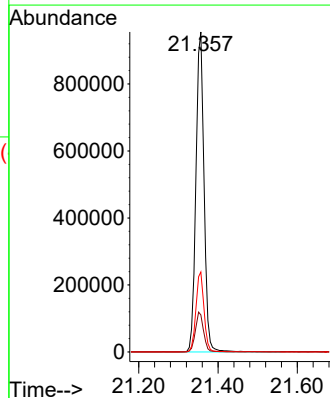
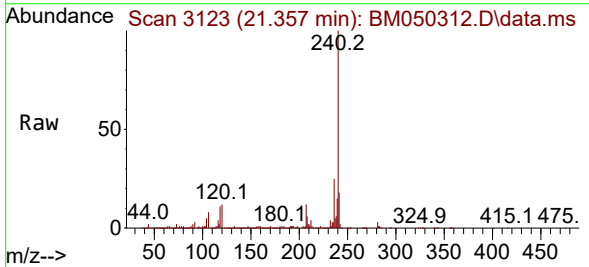
Ion	Ratio	Lower	Upper
188	100		
94	10.9	8.1	12.1
80	12.0	8.6	13.0



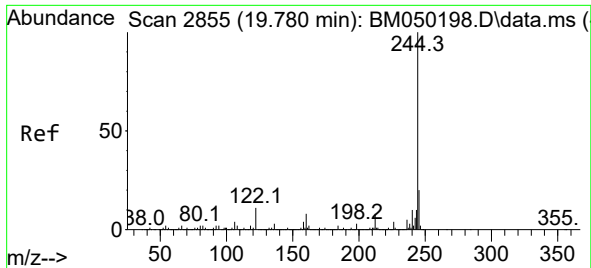
#76  
 Chrysene-d12  
 Concen: 20.000 ng  
 RT: 21.357 min Scan# 3123  
 Delta R.T. -0.017 min  
 Lab File: BM050312.D  
 Acq: 13 Jun 2025 23:03

Tgt Ion:240 Resp: 1355341

Ion	Ratio	Lower	Upper
240	100		
120	11.6	9.0	13.4
236	25.0	20.7	31.1



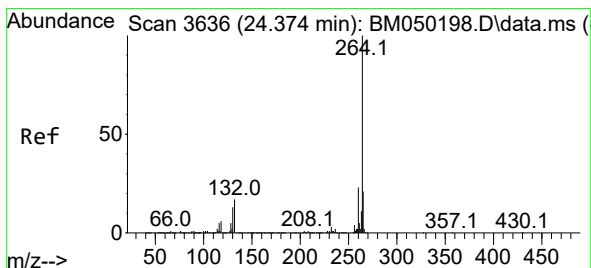
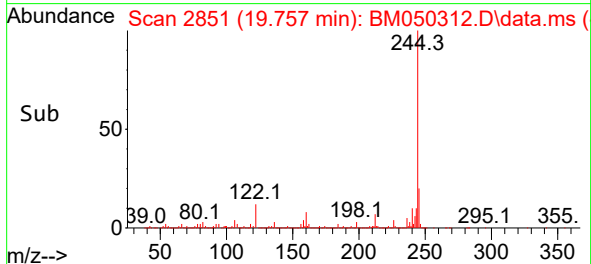
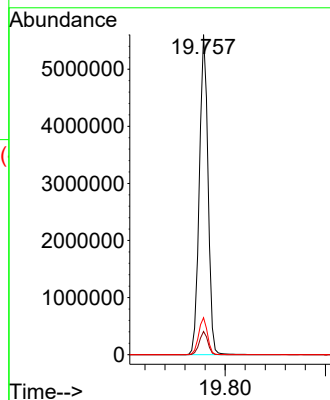
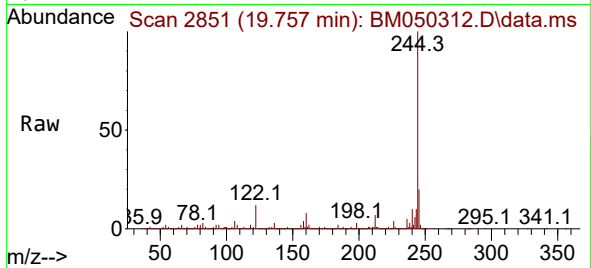




#79  
 Terphenyl-d14  
 Concen: 93.928 ng  
 RT: 19.757 min Scan# 21  
 Delta R.T. -0.011 min  
 Lab File: BM050312.D  
 Acq: 13 Jun 2025 23:03

Instrument :  
 BNA\_M  
 ClientSampleId :  
 WC-6

Tgt Ion:244 Resp: 6717832  
 Ion Ratio Lower Upper  
 244 100  
 212 7.2 6.0 9.0  
 122 11.5 8.6 12.8



#86  
 Perylene-d12  
 Concen: 20.000 ng  
 RT: 24.327 min Scan# 3628  
 Delta R.T. -0.017 min  
 Lab File: BM050312.D  
 Acq: 13 Jun 2025 23:03

Tgt Ion:264 Resp: 855453  
 Ion Ratio Lower Upper  
 264 100  
 260 25.6 18.6 28.0  
 265 21.1 16.8 25.2

