

Data Path : Z:\HPCHEM1\BNA\_M\DATA\BM061615\  
 Data File : BM001708.D  
 Acq On : 16 Jun 2015 11:26  
 Operator : TP/IZ  
 Sample : G2610-02  
 Misc :  
 ALS Vial : 4 Sample Multiplier: 1

Instrument :  
 BNA\_M  
 ClientSampleId :  
 X1W48

## Integration Parameters: LSCINT.P

Integrator: RTE  
 Smoothing : OFF  
 Sampling : 1  
 Start Thrs: 0.2  
 Stop Thrs : 0

Filtering: 5  
 Min Area: 0.1 % of largest Peak  
 Max Peaks: 100  
 Peak Location: TOP

If leading or trailing edge < 100 prefer < Baseline drop else tangent >  
 Peak separation: 5

Method : Z:\HPCHEM1\BNA\_M\METHODS\SOM02.2-EPA-BM061515.M  
 Title : SVOA CALIBRATION

Signal : TIC

peak #	R.T. min	first scan	max scan	last scan	PK TY	peak height	corr. area	corr. % max.	% of total
1	2.810	17	21	29	rVV	40863	60250	1.59%	0.143%
2	2.881	29	33	49	rVB	520341	632900	16.67%	1.499%
3	3.140	74	77	82	rVB	5294	6207	0.16%	0.015%
4	6.657	671	675	678	rVB	5121	5556	0.15%	0.013%
5	6.828	699	704	711	rBV	100907	148949	3.92%	0.353%
6	7.004	727	734	742	rVB	210187	319070	8.40%	0.756%
7	7.092	744	749	757	rBB	232964	338994	8.93%	0.803%
8	7.192	760	766	773	rVV	277492	421753	11.11%	0.999%
9	7.663	838	846	849	rBV	244205	412714	10.87%	0.978%
10	7.698	849	852	859	rVV	418375	621382	16.37%	1.472%
11	7.887	879	884	890	rBB2	11866	17447	0.46%	0.041%
12	8.198	931	937	940	rBV	6368	10256	0.27%	0.024%
13	8.328	955	959	960	rBV	6214	7130	0.19%	0.017%
14	8.369	960	966	975	rVB	269121	413399	10.89%	0.979%
15	8.528	989	993	997	rBV2	3125	4980	0.13%	0.012%
16	8.822	1036	1043	1047	rBV	258617	436508	11.50%	1.034%
17	8.869	1047	1051	1058	rVB	254932	408499	10.76%	0.968%
18	9.228	1105	1112	1116	rBB2	3058	5424	0.14%	0.013%
19	9.539	1159	1165	1173	rVB	228356	363255	9.57%	0.860%
20	9.633	1174	1181	1193	rVB	486605	778854	20.51%	1.845%
21	10.075	1249	1256	1258	rBV	389678	673499	17.74%	1.595%
22	10.098	1258	1260	1275	rVB	460267	621147	16.36%	1.471%
23	10.339	1290	1301	1312	rVB2	399381	1052923	27.73%	2.494%
24	10.457	1314	1321	1325	rBV	316745	535326	14.10%	1.268%
25	10.504	1325	1329	1339	rVB	578502	922003	24.28%	2.184%
26	10.592	1339	1344	1350	rBV	17898	26819	0.71%	0.064%
27	12.239	1618	1624	1632	rVB	28921	49083	1.29%	0.116%
28	12.804	1714	1720	1730	rVB	540358	780791	20.56%	1.850%
29	13.151	1772	1779	1783	rBV	1869347	2796815	73.66%	6.625%
30	13.192	1783	1786	1792	rVB	774232	1049677	27.65%	2.486%
31	13.627	1856	1860	1864	rVB	13479	16196	0.43%	0.038%
32	13.733	1872	1878	1883	rBV	662306	879271	23.16%	2.083%
33	13.904	1901	1907	1912	rBV	352387	469091	12.35%	1.111%
34	14.010	1919	1925	1928	rBV	737278	1200032	31.61%	2.843%

Data Path : Z:\HPCHEM1\BNA\_M\DATA\BM061615\  
 Data File : BM001708.D  
 Acq On : 16 Jun 2015 11:26  
 Operator : TP/IZ  
 Sample : G2610-02  
 Misc :  
 ALS Vial : 4 Sample Multiplier: 1

Instrument :  
 BNA\_M  
 ClientSampleId :  
 X1W48

## Integration Parameters: LSCINT.P

Integrator: RTE  
 Smoothing : OFF  
 Sampling : 1  
 Start Thrs: 0.2  
 Stop Thrs : 0

Filtering: 5  
 Min Area: 0.1 % of largest Peak  
 Max Peaks: 100  
 Peak Location: TOP

If leading or trailing edge < 100 prefer < Baseline drop else tangent >  
 Peak separation: 5

Method : Z:\HPCHEM1\BNA\_M\METHODS\SOM02.2-EPA-BM061515.M  
 Title : SVOA CALIBRATION

35	14.039	1928	1930	1940	rVB	842108	1069537	28.17%	2.534%
36	14.321	1971	1978	1984	rBV2	446149	665825	17.54%	1.577%
37	14.380	1984	1988	1995	rVB	19685	28114	0.74%	0.067%
38	14.516	2006	2011	2020	rBV	113544	154958	4.08%	0.367%
39	14.674	2031	2038	2049	rBV	110508	181852	4.79%	0.431%
40	15.151	2112	2119	2125	rBV	1104910	1468667	38.68%	3.479%
41	15.315	2140	2147	2154	rVB	977311	1338098	35.24%	3.170%
42	15.433	2162	2167	2173	rBV	344537	449462	11.84%	1.065%
43	16.415	2329	2334	2339	rBV	573506	673378	17.73%	1.595%
44	16.880	2411	2413	2418	rVB	6725	8876	0.23%	0.021%
45	17.068	2439	2445	2448	rBV	576087	844512	22.24%	2.000%
46	17.109	2448	2452	2457	rVV	1554248	2093593	55.14%	4.959%
47	17.168	2457	2462	2473	rVB	1087827	1556242	40.99%	3.686%
48	17.474	2507	2514	2520	rBV	1196892	1619813	42.66%	3.837%
49	17.645	2539	2543	2546	rBV3	5174	5357	0.14%	0.013%
50	18.080	2611	2617	2622	rVB	1103387	1292222	34.03%	3.061%
51	18.286	2649	2652	2658	rVB2	4730	5370	0.14%	0.013%
52	19.127	2789	2795	2802	rBV	1725067	2254740	59.38%	5.341%
53	19.351	2829	2833	2838	rVB	6933	8587	0.23%	0.020%
54	19.462	2846	2852	2860	rBV	1456267	1848658	48.69%	4.379%
55	20.227	2979	2982	2985	rBV3	5001	5585	0.15%	0.013%
56	20.439	3013	3018	3021	rBV4	18628	24119	0.64%	0.057%
57	20.903	3093	3097	3103	rBV	11546	14403	0.38%	0.034%
58	21.050	3120	3122	3125	rVB	7770	6000	0.16%	0.014%
59	21.256	3152	3157	3160	rBV	807861	1057496	27.85%	2.505%
60	21.297	3160	3164	3169	rVB	3220916	3796923	100.00%	8.994%
61	21.521	3199	3202	3206	rVB2	10694	14751	0.39%	0.035%
62	22.756	3407	3412	3417	rVB6	8084	13460	0.35%	0.032%
63	23.344	3504	3512	3521	rVB2	1121536	2113098	55.65%	5.005%
64	23.480	3528	3535	3542	rBV	623123	1115770	29.39%	2.643%

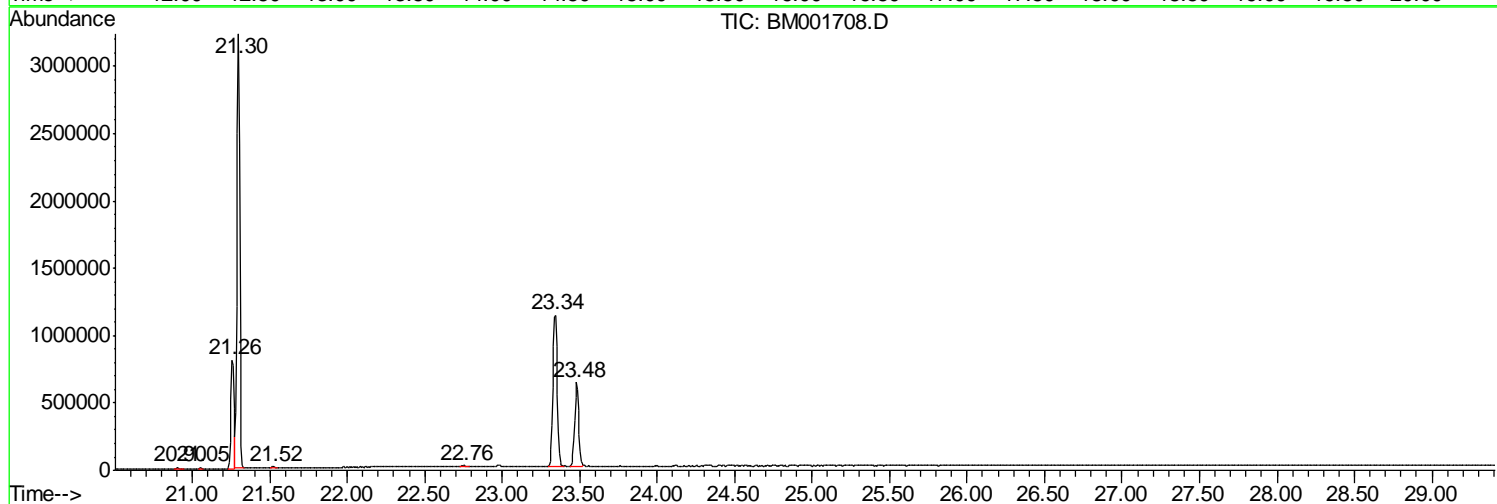
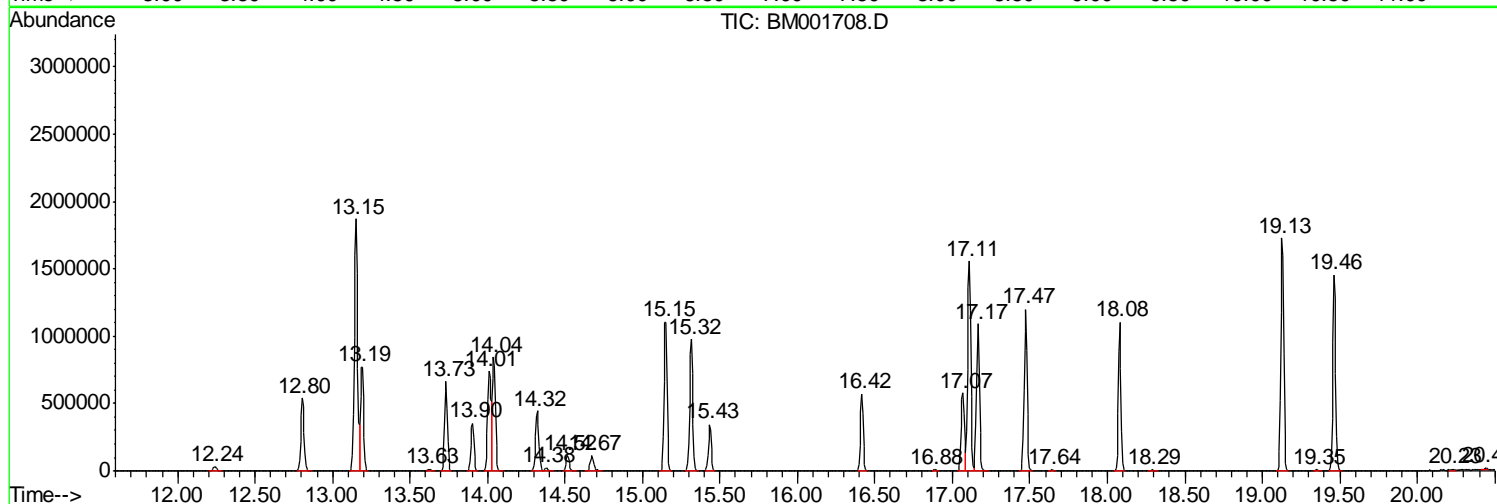
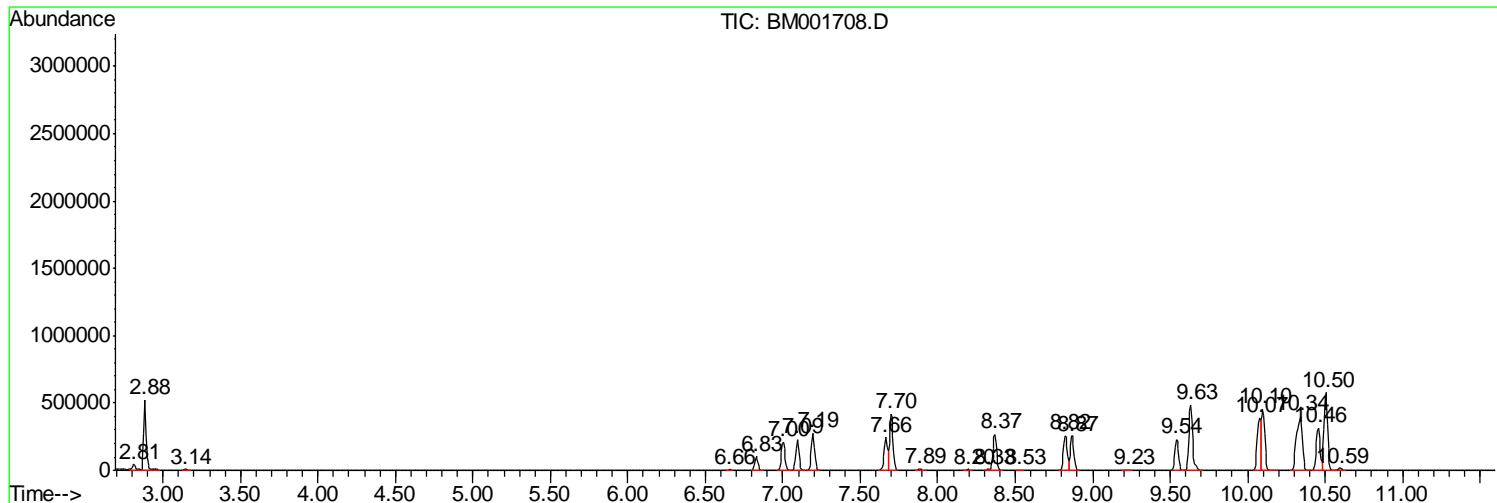
Sum of corrected areas: 42215666

Data Path : Z:\HPCHEM1\BNA\_M\DATA\BM061615\  
 Data File : BM001708.D  
 Acq On : 16 Jun 2015 11:26  
 Operator : TP/IZ  
 Sample : G2610-02  
 Misc :  
 ALS Vial : 4 Sample Multiplier: 1

Instrument :  
 BNA\_M  
 ClientSampleId :  
 X1W48

Quant Method : Z:\HPCHEM1\BNA\_M\METHODS\SOM02.2-EPA-BM061515.M  
 Quant Title : SVOA CALIBRATION

TIC Library : C:\DATABASE\NIST02.L  
 TIC Integration Parameters: LSCINT.P



Data Path : Z:\HPCHEM1\BNA\_M\DATA\BM061615\  
 Data File : BM001708.D  
 Acq On : 16 Jun 2015 11:26  
 Operator : TP/IZ  
 Sample : G2610-02  
 Misc :  
 ALS Vial : 4 Sample Multiplier: 1

Instrument :  
 BNA\_M  
 ClientSampled :  
 X1W48

Quant Method : Z:\HPCHEM1\BNA\_M\METHODS\SOM02.2-EPA-BM061515.M  
 Quant Title : SVOA CALIBRATION

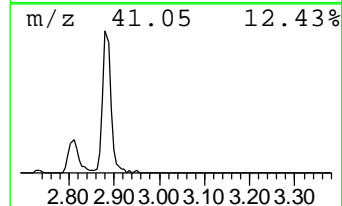
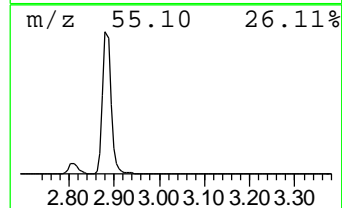
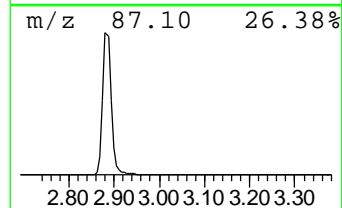
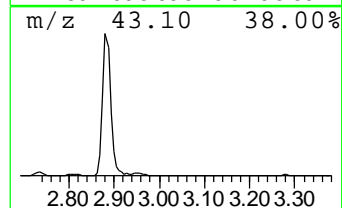
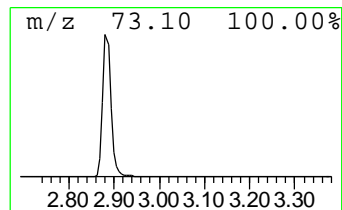
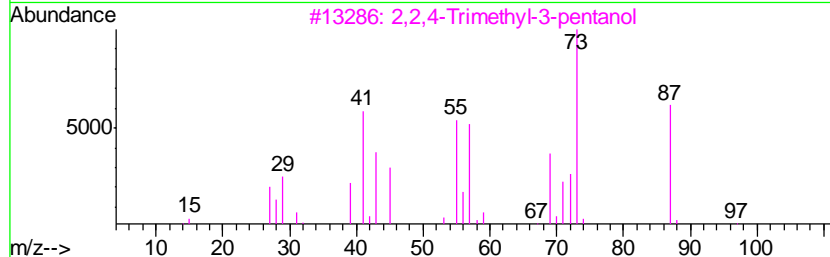
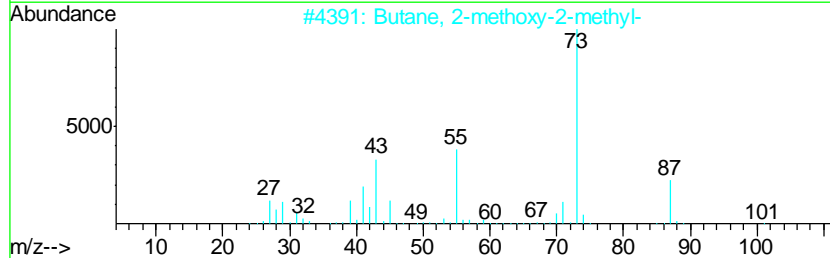
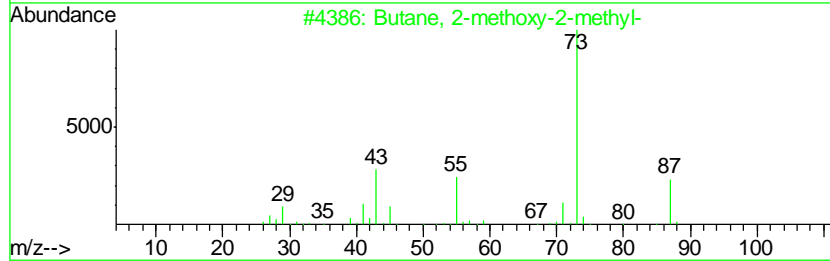
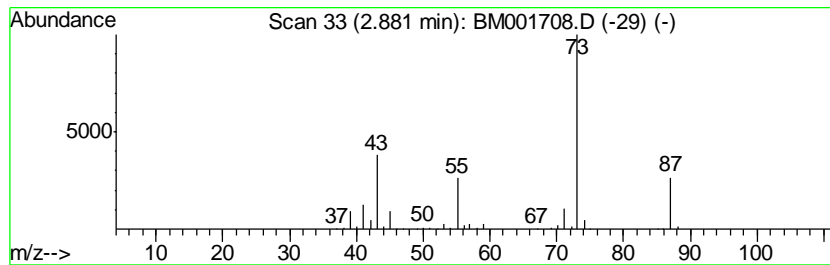
TIC Library : C:\DATABASE\NIST02.L  
 TIC Integration Parameters: LSCINT.P

\*\*\*\*\*  
 Peak Number 2 Butane, 2-methoxy-2-methyl- Concentration Rank 2

R.T.	EstConc	Area	Relative to ISTD	R.T.
2.88	30.67 ng/ul	632900	1,4-Dichlorobenzene-d4	7.67

Hit#	of	Tentative ID	MW	MolForm	CAS#	Qual
1	5	Butane, 2-methoxy-2-methyl-	102	C6H14O	000994-05-8	78
2		Butane, 2-methoxy-2-methyl-	102	C6H14O	000994-05-8	74
3		2,2,4-Trimethyl-3-pentanol	130	C8H18O	005162-48-1	40
4		Acetamide, N-ethyl-	87	C4H9NO	000625-50-3	22
5		Pentane, 3-methoxy-	102	C6H14O	036839-67-5	17



Data Path : Z:\HPCHEM1\BNA\_M\DATA\BM061615\  
 Data File : BM001708.D  
 Acq On : 16 Jun 2015 11:26  
 Operator : TP/IZ  
 Sample : G2610-02  
 Misc :  
 ALS Vial : 4 Sample Multiplier: 1

Instrument :  
 BNA\_M  
 ClientSampled :  
 X1W48

Quant Method : Z:\HPCHEM1\BNA\_M\METHODS\SOM02.2-EPA-BM061515.M  
 Quant Title : SVOA CALIBRATION

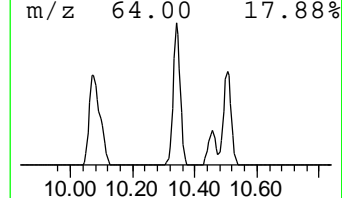
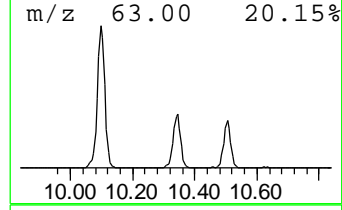
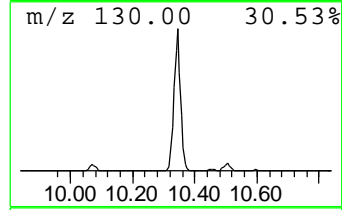
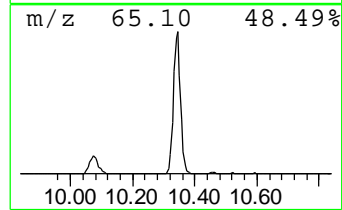
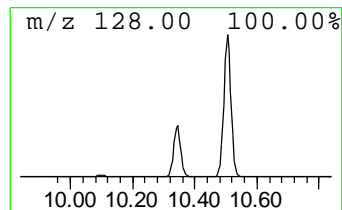
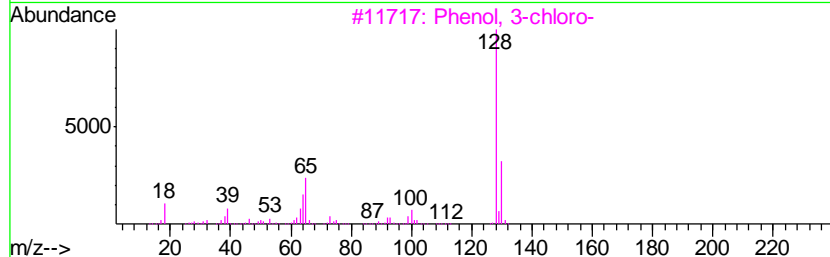
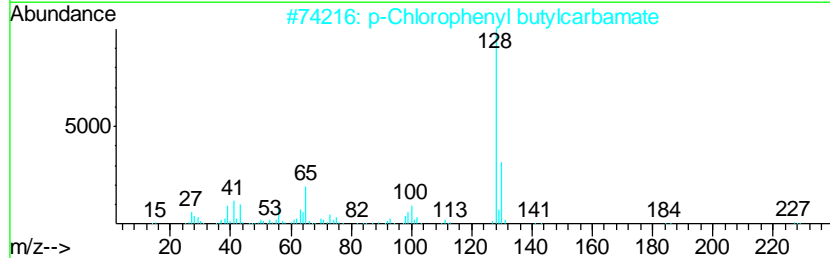
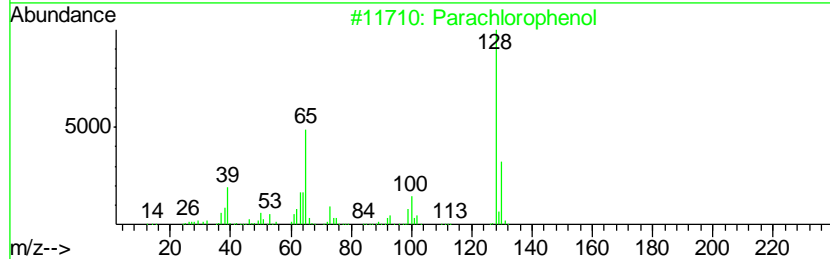
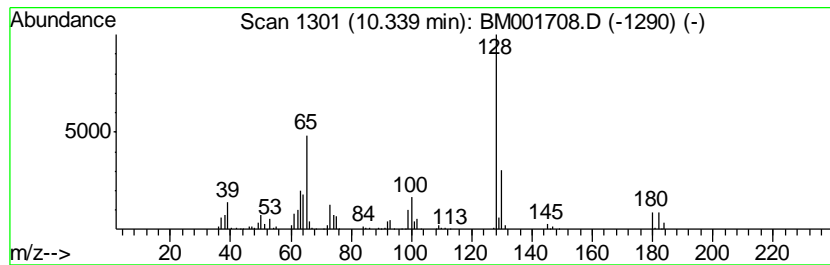
TIC Library : C:\DATABASE\NIST02.L  
 TIC Integration Parameters: LSCINT.P

\*\*\*\*\*  
 Peak Number 3 Parachlorophenol Concentration Rank 1

R.T.	EstConc	Area	Relative to ISTD	R.T.
10.34	39.34 ng/ul	1052920	Naphthalene-d8	10.46

Hit#	of	Tentative ID	MW	MolForm	CAS#	Qual
1	5	Parachlorophenol	128	C6H5ClO	000106-48-9	95
2		p-Chlorophenyl butylcarbamate	227	C11H14ClNO2	132905-93-2	90
3		Phenol, 3-chloro-	128	C6H5ClO	000108-43-0	76
4		p-Chlorophenyl benzylcarbamate	261	C14H12ClNO2	124068-98-0	72
5		Parachlorophenol	128	C6H5ClO	000106-48-9	68



Data Path : Z:\HPCHEM1\BNA\_M\DATA\BM061615\  
 Data File : BM001708.D  
 Acq On : 16 Jun 2015 11:26  
 Operator : TP/IZ  
 Sample : G2610-02  
 Misc :  
 ALS Vial : 4 Sample Multiplier: 1

Instrument :  
 BNA\_M  
 ClientSampleID :  
 X1W48

Quant Method : Z:\HPCHEM1\BNA\_M\METHODS\SOM02.2-EPA-BM061515.M  
 Quant Title : SVOA CALIBRATION

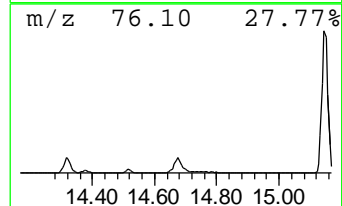
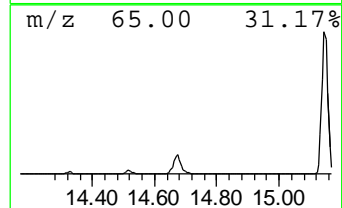
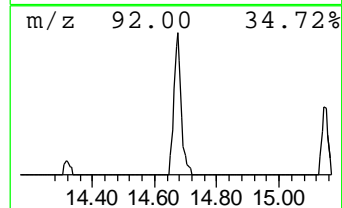
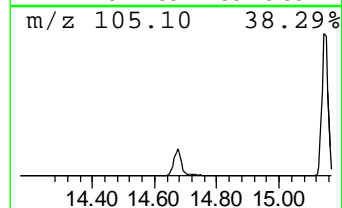
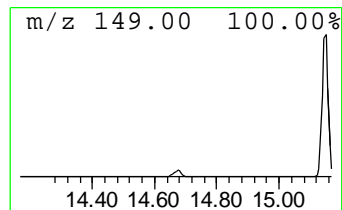
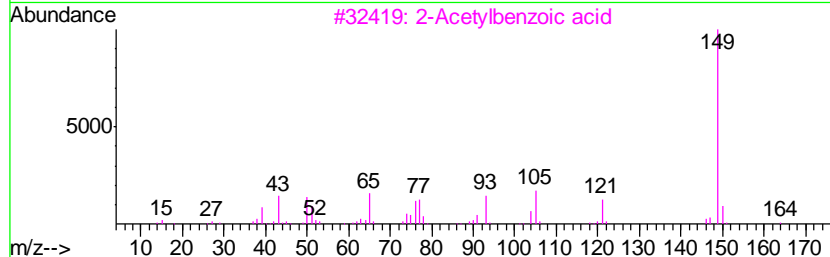
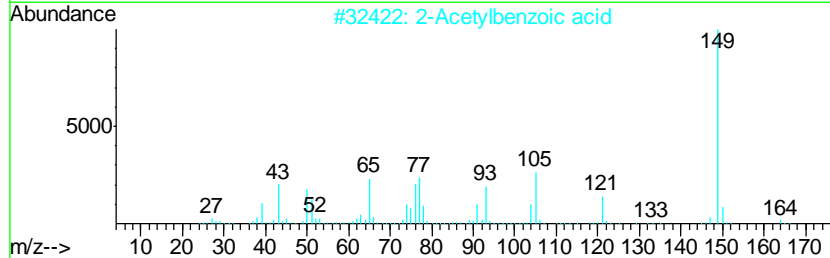
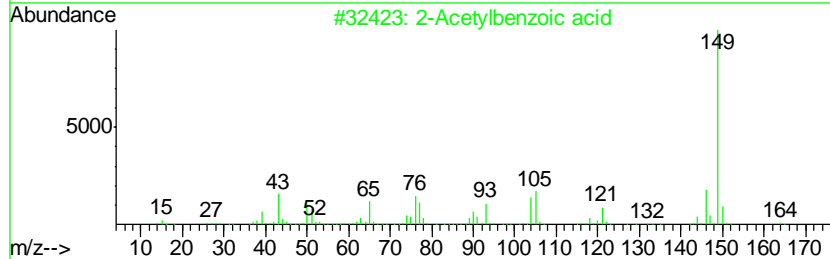
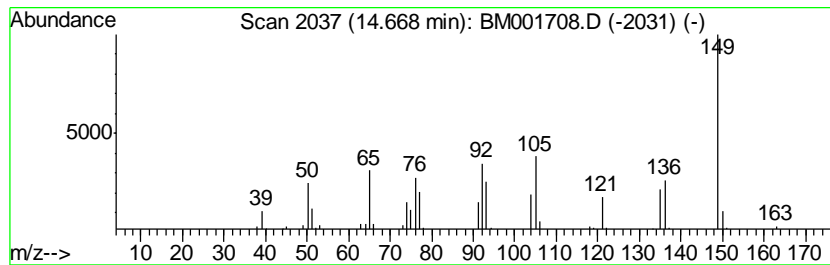
TIC Library : C:\DATABASE\NIST02.L  
 TIC Integration Parameters: LSCINT.P

\*\*\*\*\*  
 Peak Number 4 2-Acetylbenzoic acid Concentration Rank 5

R.T.	EstConc	Area	Relative to ISTD	R.T.
14.67	5.46 ng/ul	181852	Acenaphthene-d10	14.32

Hit#	of	Tentative ID	MW	MolForm	CAS#	Qual
1	5	2-Acetylbenzoic acid	164	C9H8O3	000577-56-0	53
2		2-Acetylbenzoic acid	164	C9H8O3	000577-56-0	42
3		2-Acetylbenzoic acid	164	C9H8O3	000577-56-0	42
4		Benzoic acid, 2-(1-oxopropyl)-	178	C10H10O3	002360-45-4	42
5		9-Aza-bicyclo[4.2.1]nona-2,4-die...	149	C9H11NO	034668-54-7	38



Data Path : Z:\HPCHEM1\BNA\_M\DATA\BM061615\  
 Data File : BM001708.D  
 Acq On : 16 Jun 2015 11:26  
 Operator : TP/IZ  
 Sample : G2610-02  
 Misc :  
 ALS Vial : 4 Sample Multiplier: 1

Instrument :  
 BNA\_M  
 ClientSampled :  
 X1W48

Quant Method : Z:\HPCHEM1\BNA\_M\METHODS\SOM02.2-EPA-BM061515.M  
 Quant Title : SVOA CALIBRATION

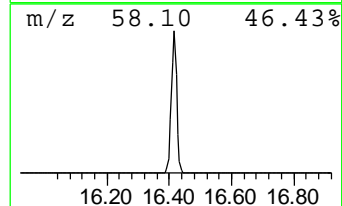
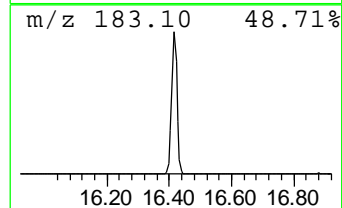
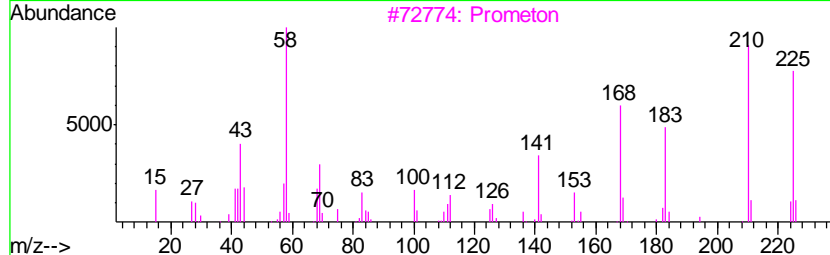
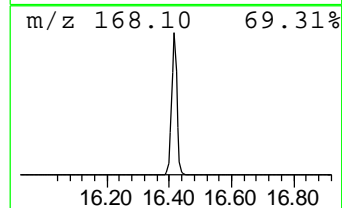
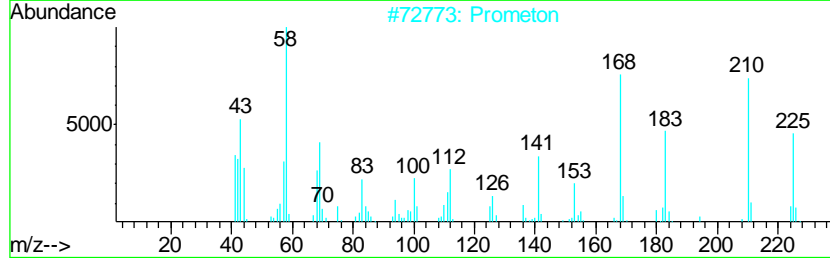
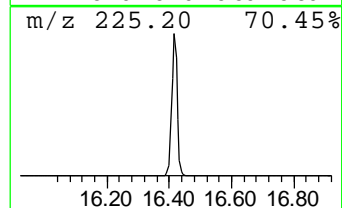
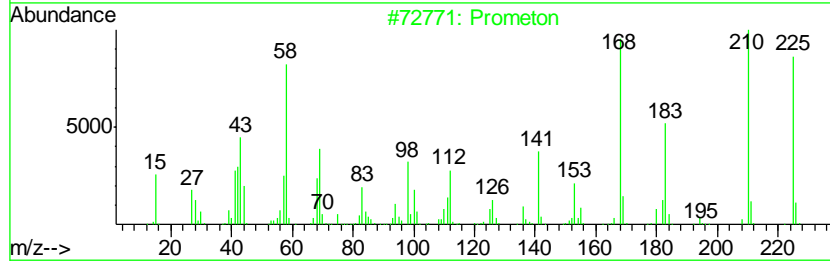
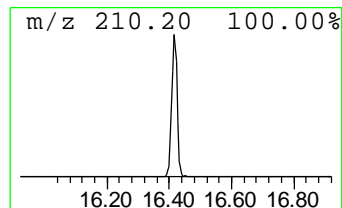
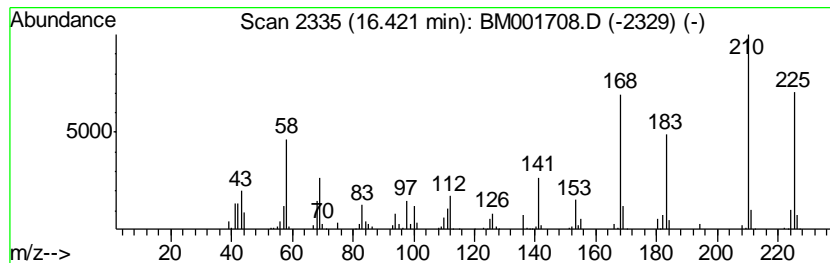
TIC Library : C:\DATABASE\NIST02.L  
 TIC Integration Parameters: LSCINT.P

\*\*\*\*\*  
 Peak Number 5 Prometon Concentration Rank 4

R.T.	EstConc	Area	Relative to ISTD	R.T.
16.42	15.95 ng/ul	673378	Phenanthrene-d10	17.07

Hit#	of	Tentative ID	MW	MolForm	CAS#	Qual
1	5	Prometon	225	C10H19N5O	001610-18-0	99
2		Prometon	225	C10H19N5O	001610-18-0	99
3		Prometon	225	C10H19N5O	001610-18-0	98
4		Prometon	225	C10H19N5O	001610-18-0	98
5		5-Acetamido-1,2,3-trimethoxybenzene	225	C11H15NO4	004304-24-9	35



Data Path : Z:\HPCHEM1\BNA\_M\DATA\BM061615\  
 Data File : BM001708.D  
 Acq On : 16 Jun 2015 11:26  
 Operator : TP/IZ  
 Sample : G2610-02  
 Misc :  
 ALS Vial : 4 Sample Multiplier: 1

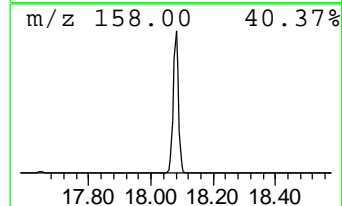
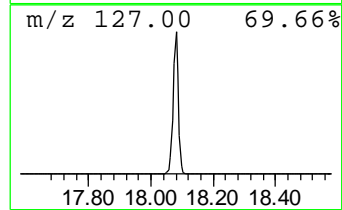
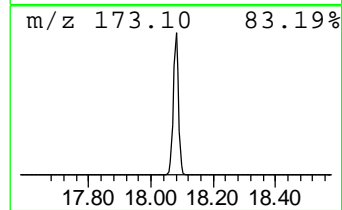
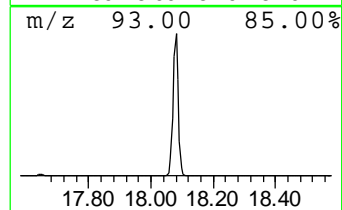
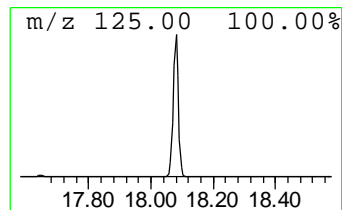
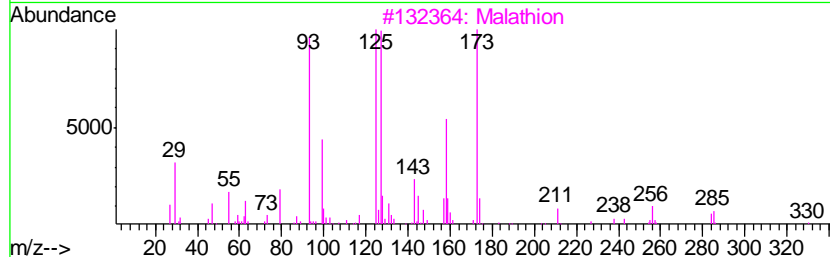
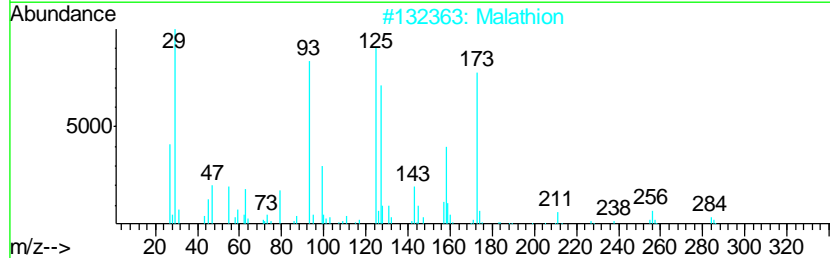
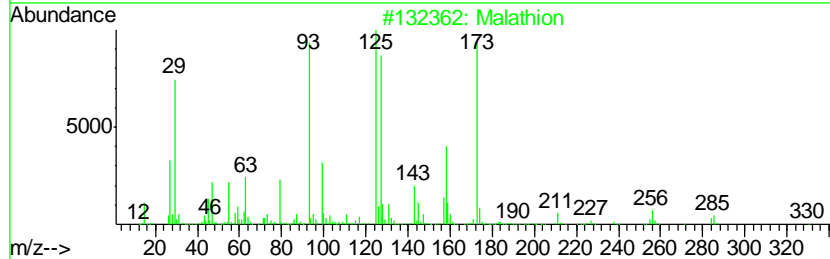
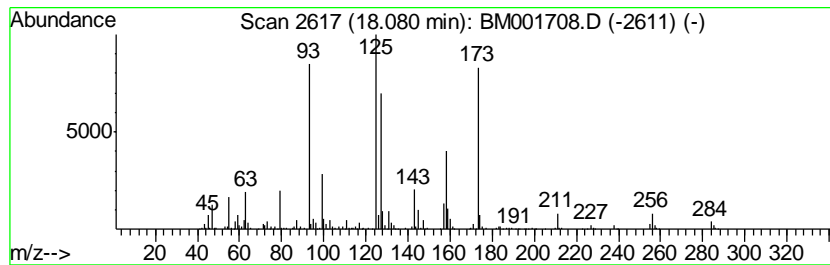
Instrument :  
 BNA\_M  
 ClientSampled :  
 X1W48

Quant Method : Z:\HPCHEM1\BNA\_M\METHODS\SOM02.2-EPA-BM061515.M  
 Quant Title : SVOA CALIBRATION

TIC Library : C:\DATABASE\NIST02.L  
 TIC Integration Parameters: LSCINT.P

\*\*\*\*\*  
 Peak Number 6 Malathion Concentration Rank 3

R.T.	EstConc	Area	Relative to ISTD	R.T.
18.08	30.60 ng/ul	1292220	Phenanthrene-d10	17.07
Hit# of	5	Tentative ID	MW MolForm	CAS# Qual
1	Malathion	330	C10H19O6PS2	000121-75-5 91
2	Malathion	330	C10H19O6PS2	000121-75-5 91
3	Malathion	330	C10H19O6PS2	000121-75-5 58
4	Malathion	330	C10H19O6PS2	000121-75-5 52
5	Butanedioic acid, [(dimethoxypho...	302	C8H15O6PS2	001190-29-0 32





Data Path : Z:\HPCHEM1\BNA\_M\DATA\BM061615\  
Data File : BM001708.D  
Acq On : 16 Jun 2015 11:26  
Operator : TP/IZ  
Sample : G2610-02  
Misc :  
ALS Vial : 4 Sample Multiplier: 1

Instrument :  
BNA\_M  
ClientSampleId :  
X1W48

Quant Method : Z:\HPCHEM1\BNA\_M\METHODS\SOM02.2-EPA-BM061515.M  
Quant Title : SVOA CALIBRATION

TIC Library : C:\DATABASE\NIST02.L  
TIC Integration Parameters: LSCINT.P

TIC Top Hit name	RT	EstConc	Units	Response	--Internal Standard--			
					#	RT	Resp	Conc
Butane, 2-methoxy...	2.88	30.7	ng/ul	632900	1	7.67	412714	20.0
Parachlorophenol	10.34	39.3	ng/ul	1052920	2	10.46	535326	20.0
2-Acetylbenzoic acid	14.67	5.5	ng/ul	181852	3	14.32	665825	20.0
Prometon	16.42	15.9	ng/ul	673378	4	17.07	844512	20.0
Malathion	18.08	30.6	ng/ul	1292220	4	17.07	844512	20.0