

Data Path : Z:\HPCHEM1\BNA_M\DATA\BM062116\
 Data File : BM005885.D
 Acq On : 21 Jun 2016 09:14
 Operator : UM/SJ
 Sample : H3461-05
 Misc :
 ALS Vial : 15 Sample Multiplier: 1

Instrument :
 BNA_M
 ClientSampleId :
 C0AY4

Integration Parameters: LSCINT.P

Integrator: RTE
 Smoothing : OFF
 Sampling : 1
 Start Thrs: 0.2
 Stop Thrs : 0

Filtering: 5
 Min Area: 1 % of largest Peak
 Max Peaks: 100
 Peak Location: TOP

If leading or trailing edge < 100 prefer < Baseline drop else tangent >
 Peak separation: 5

Method : Z:\HPCHEM1\BNA_M\METHODS\SOM02.2-EPA-BM062116.M
 Title : SVOA CALIBRATION

Signal : TIC

peak #	R.T. min	first scan	max scan	last scan	PK TY	peak height	corr. area	corr. % max.	% of total
1	6.845	717	724	730	rBV	188777	308385	3.26%	0.413%
2	7.016	745	753	765	rBV	684756	1133389	11.97%	1.517%
3	7.210	780	786	798	rVB	685382	1138631	12.03%	1.524%
4	7.681	859	866	874	rVB	667991	1119355	11.82%	1.498%
5	8.375	974	984	995	rBV	575337	989308	10.45%	1.324%
6	8.828	1052	1061	1070	rBV	906613	1539428	16.26%	2.061%
7	9.545	1175	1183	1197	rBV	682512	1174567	12.41%	1.572%
8	10.081	1265	1274	1288	rBV	1068579	1899484	20.07%	2.542%
9	10.463	1331	1339	1348	rBV	1092689	1926600	20.35%	2.579%
10	13.739	1889	1896	1914	rBV	2576329	3954232	41.77%	5.293%
11	14.016	1934	1943	1951	rBV	2828540	4294346	45.37%	5.748%
12	14.321	1989	1995	2006	rVB2	1836490	3004435	31.74%	4.021%
13	14.516	2022	2028	2036	rBV2	264802	431509	4.56%	0.578%
14	15.321	2158	2165	2173	rBV	3929304	5831289	61.60%	7.805%
15	15.433	2178	2184	2198	rVV	1022392	1479454	15.63%	1.980%
16	17.068	2456	2462	2470	rBV2	2663607	4048773	42.77%	5.419%
17	17.168	2473	2479	2488	rVB2	4804972	7395418	78.12%	9.899%
18	19.103	2801	2808	2812	rBV	81819	123995	1.31%	0.166%
19	19.268	2832	2836	2845	rBV3	90269	158025	1.67%	0.212%
20	19.421	2857	2862	2865	rBV	123647	169657	1.79%	0.227%
21	19.468	2865	2870	2878	rVV2	6033810	8987630	94.94%	12.030%
22	19.539	2878	2882	2887	rVB2	96480	134375	1.42%	0.180%
23	20.474	3037	3041	3047	rBV	110096	140381	1.48%	0.188%
24	21.268	3170	3176	3181	rBV	4370206	5636550	59.54%	7.545%
25	21.439	3202	3205	3211	rBV	139821	154141	1.63%	0.206%
26	21.874	3276	3279	3283	rVB2	133467	151328	1.60%	0.203%
27	22.339	3355	3358	3365	rVB2	188022	256859	2.71%	0.344%
28	22.844	3441	3444	3455	rVB2	207910	302208	3.19%	0.405%
29	23.356	3523	3531	3537	rBV2	4886085	9466162	100.00%	12.670%
30	23.409	3537	3540	3546	rVB	276513	426721	4.51%	0.571%
31	23.491	3547	3554	3563	rVB2	3000898	5735151	60.59%	7.677%
32	24.056	3646	3650	3657	rVB	258470	479154	5.06%	0.641%
33	24.797	3772	3776	3790	rVB2	311636	719324	7.60%	0.963%

Data Path : Z:\HPCHEM1\BNA_M\DATA\BM062116\
Data File : BM005885.D
Acq On : 21 Jun 2016 09:14
Operator : UM/SJ
Sample : H3461-05
Misc :
ALS Vial : 15 Sample Multiplier: 1

Instrument :
BNA_M
ClientSampleId :
C0AY4

Integration Parameters: LSCINT.P
Integrator: RTE
Smoothing : OFF Filtering: 5
Sampling : 1 Min Area: 1 % of largest Peak
Start Thrs: 0.2 Max Peaks: 100
Stop Thrs : 0 Peak Location: TOP

If leading or trailing edge < 100 prefer < Baseline drop else tangent >
Peak separation: 5

Method : Z:\HPCHEM1\BNA_M\METHODS\SOM02.2-EPA-BM062116.M
Title : SVOA CALIBRATION

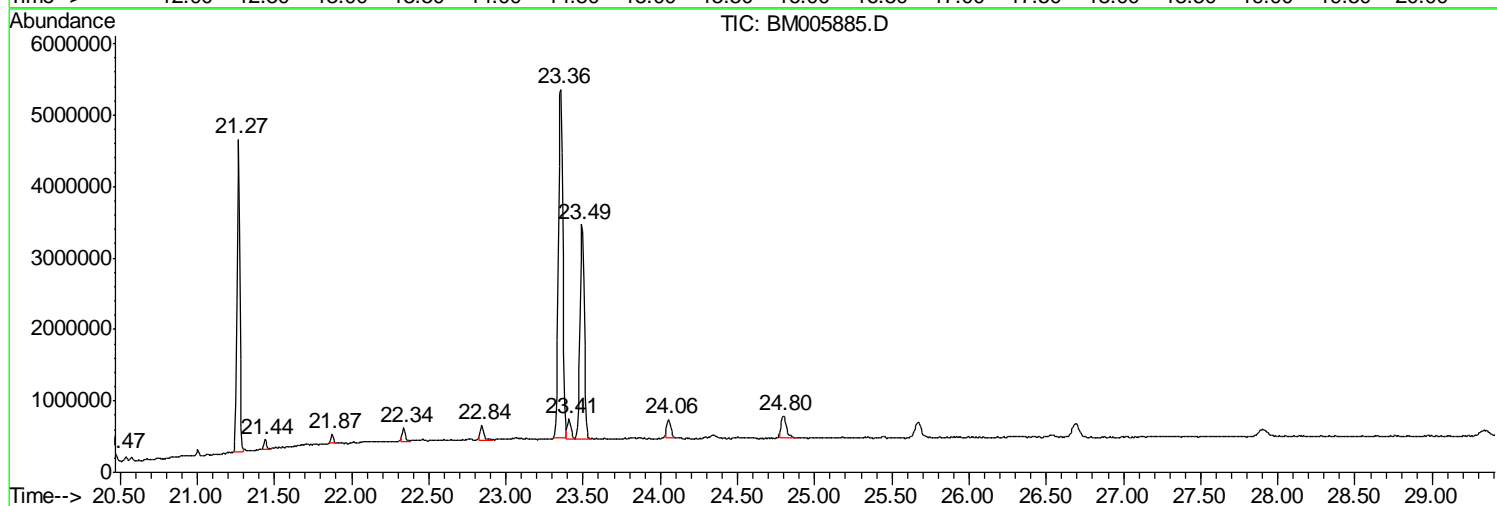
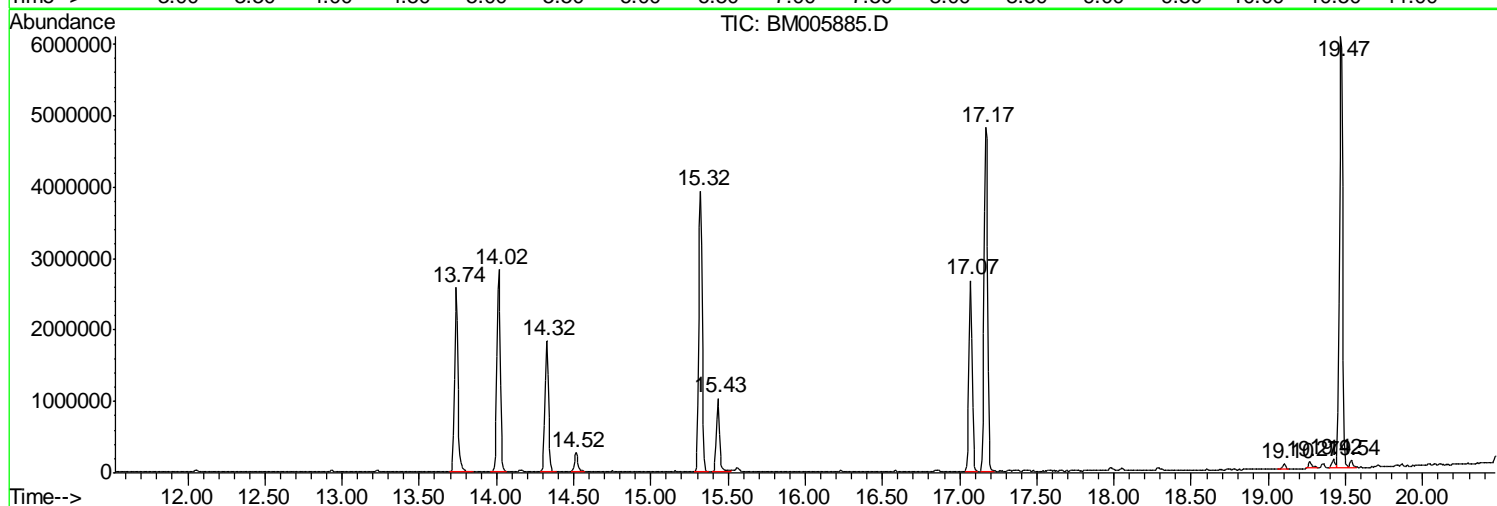
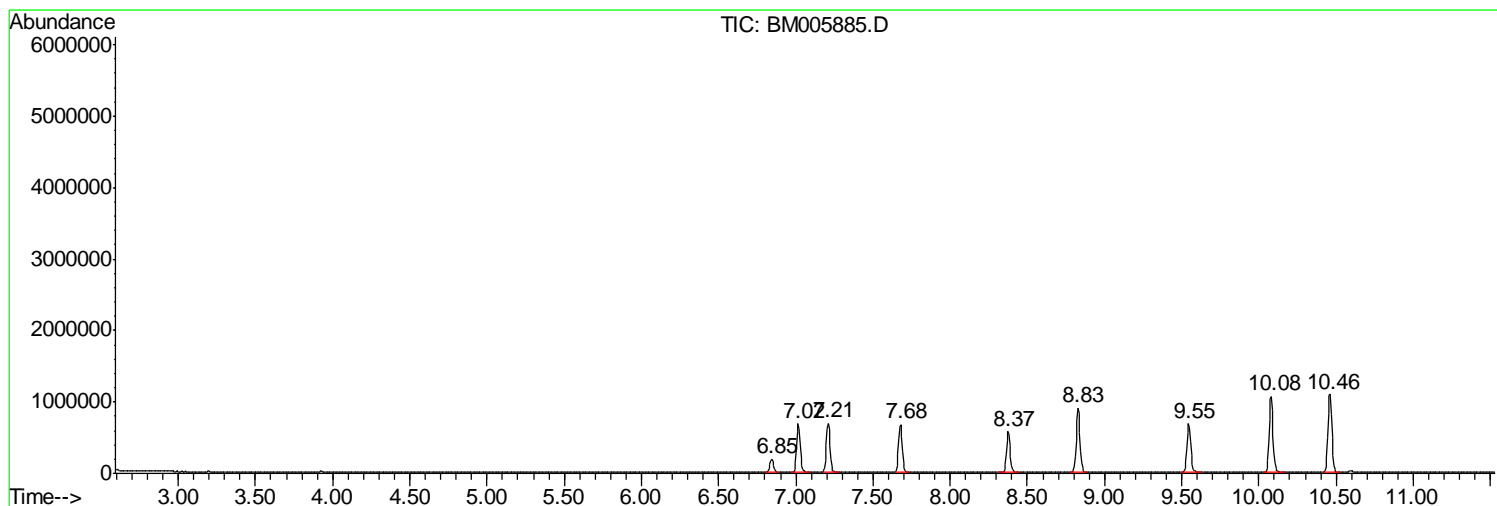
Sum of corrected areas: 74710264

Data Path : Z:\HPCHEM1\BNA_M\DATA\BM062116\
 Data File : BM005885.D
 Acq On : 21 Jun 2016 09:14
 Operator : UM/SJ
 Sample : H3461-05
 Misc :
 ALS Vial : 15 Sample Multiplier: 1

Instrument :
 BNA_M
 ClientSampled :
 C0AY4

Quant Method : Z:\HPCHEM1\BNA_M\METHODS\SOM02.2-EPA-BM062116.M
 Quant Title : SVOA CALIBRATION

TIC Library : C:\DATABASE\NIST11.L
 TIC Integration Parameters: LSCINT.P



Data Path : Z:\HPCHEM1\BNA_M\DATA\BM062116\
 Data File : BM005885.D
 Acq On : 21 Jun 2016 09:14
 Operator : UM/SJ
 Sample : H3461-05
 Misc :
 ALS Vial : 15 Sample Multiplier: 1

Instrument :
 BNA_M
 ClientSampleID :
 C0AY4

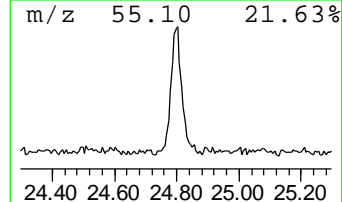
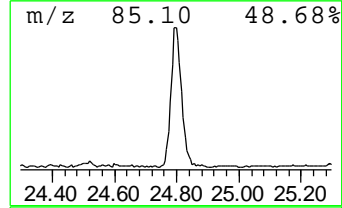
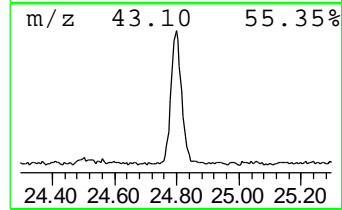
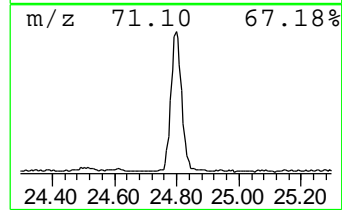
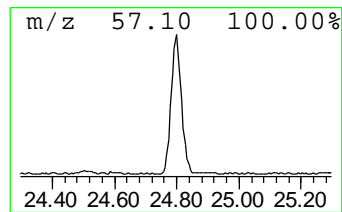
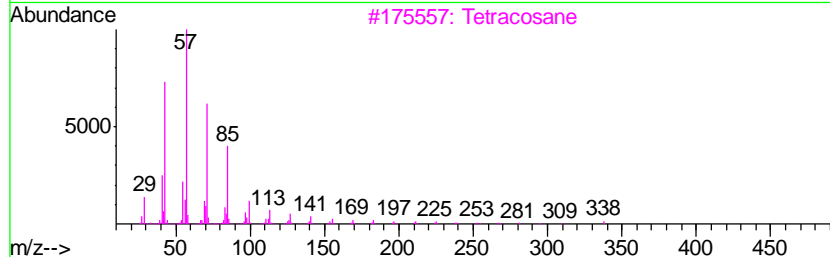
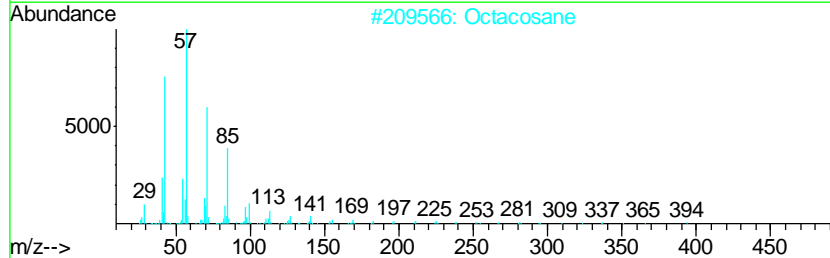
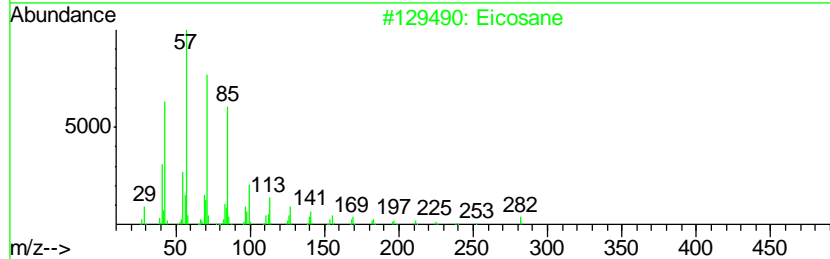
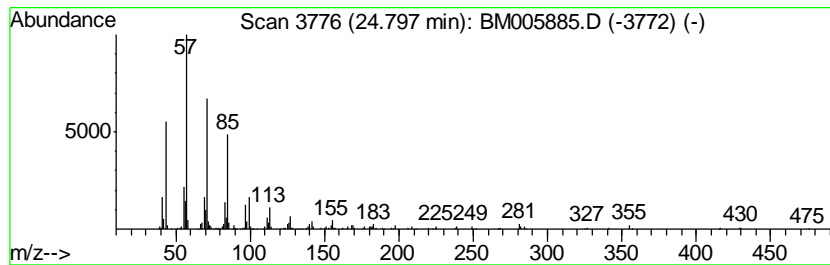
Quant Method : Z:\HPCHEM1\BNA_M\METHODS\SOM02.2-EPA-BM062116.M
 Quant Title : SVOA CALIBRATION

TIC Library : C:\DATABASE\NIST11.L
 TIC Integration Parameters: LSCINT.P

 Peak Number 1 (DEL) Alkane: Straight-Chai... Concentration Rank 1

R.T.	EstConc	Area	Relative to ISTD	R.T.
24.80	2.51 ng/ul	719324	Perylene-d12	23.49

Hit#	of	Tentative ID	MW	MolForm	CAS#	Qual
1	5	Eicosane	282	C20H42	000112-95-8	98
2		Octacosane	394	C28H58	000630-02-4	90
3		Tetracosane	338	C24H50	000646-31-1	90
4		Hentriacontane	437	C31H64	000630-04-6	90
5		Heneicosane	296	C21H44	000629-94-7	90



Data Path : Z:\HPCHEM1\BNA_M\DATA\BM062116\
Data File : BM005885.D
Acq On : 21 Jun 2016 09:14
Operator : UM/SJ
Sample : H3461-05
Misc :
ALS Vial : 15 Sample Multiplier: 1

Instrument :
BNA_M
ClientSampleId :
C0AY4

Quant Method : Z:\HPCHEM1\BNA_M\METHODS\SOM02.2-EPA-BM062116.M
Quant Title : SVOA CALIBRATION

TIC Library : C:\DATABASE\NIST11.L
TIC Integration Parameters: LSCINT.P

TIC Top Hit name	RT	EstConc	Units	Response	--Internal Standard--			
					#	RT	Resp	Conc
(DEL) Alkane: Str...	24.80	2.5	ng/ul	719324	6	23.49	5735150	20.0